

APPENDIX 4

PROPOSED DEVELOPMENT ARCHITECTURAL PLANS



DRAWING LIST

4167_DA000	COVER SHEET	NTS
4167_DA001	SITE PLAN / GROUND FLOOR	1:750
4167_DA002	SITE PLAN / ROOF PLAN	1:750
4167_DA011	BLDG 1 - GROUND FLOOR PLAN EXPANSION	1:250
4167_DA012	BLDG 1 - ROOF PLAN EXPANSION	1:250
4167_DA015	BLDG 2 - GROUND FLOOR PLAN EXPANSION	1:250
4167_DA016	BLDG 2 - MEZZANINE FLOOR PLAN	1:250
4167_DA017	BLDG 2 - ROOF PLAN EXPANSION	1:250
4167_DA018	BLDG 2 - DOCK OFFICE	1:100
4167_DA020	SITE ELEVATIONS	1:750
4167_DA021	BLDG 1 - ELEVATION EXPANSION	1:250
4167_DA025	BLDG 2 - ELEVATION EXPANSION	1:250
4167_DA031	SECTIONS	1:250
4167_DA041	BLDG 1 - RENDERED ELEVATIONS	1:250
4167_DA045	BLDG 2 - RENDERED ELEVATIONS	1:250
4167_DA061	TRAFFIC MANAGEMENT PLAN	1:750

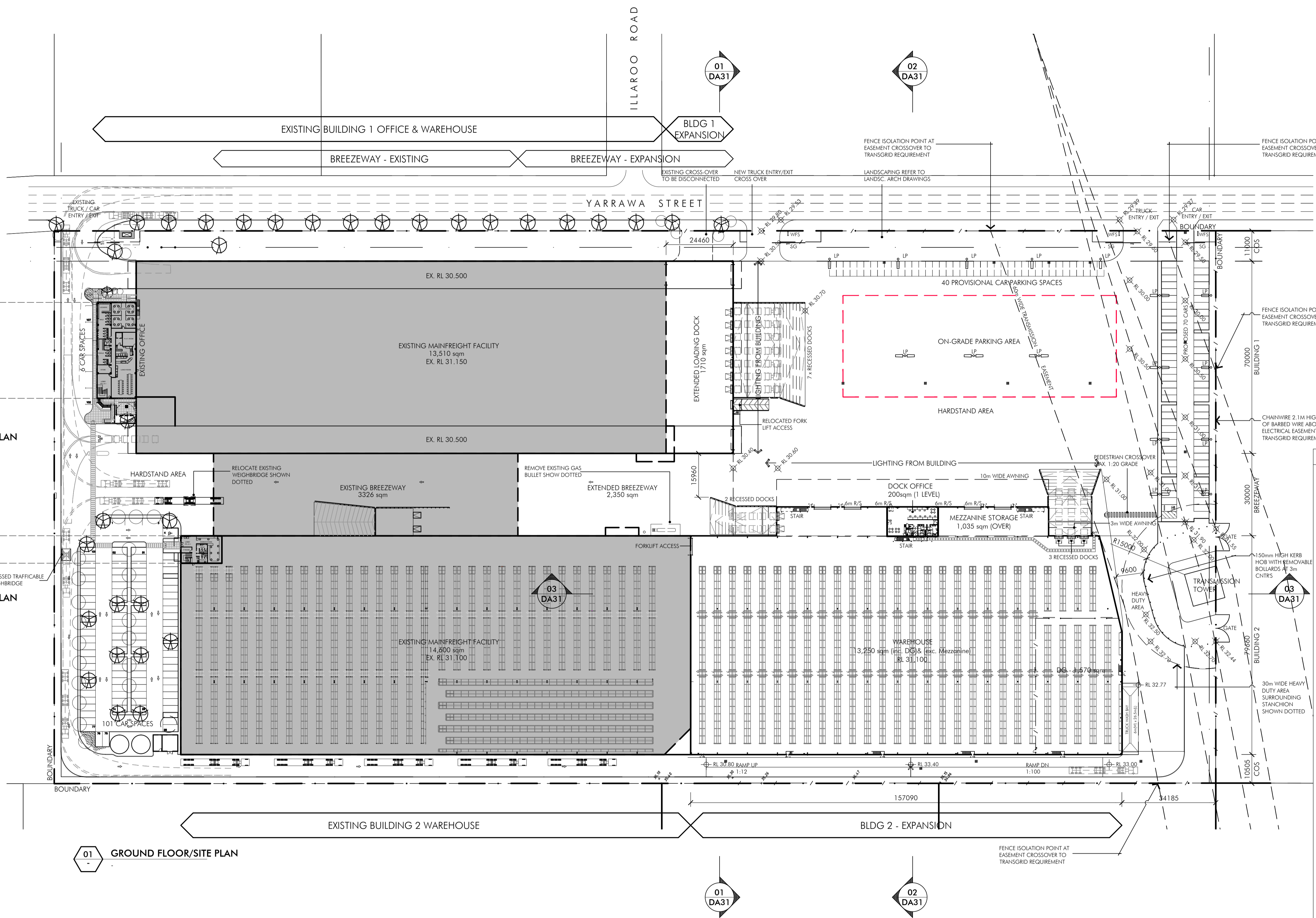


# mainfreight facility - proposed expansion prestons distribution centre

26 yarrawa street, PRESTONS  
 development application  
 20 february, 2013

**LEGEND**

- LP LIGHT POST - MAX. 4m ABOVE FRL WITHIN TRANSGRID ELECTRICAL EASEMENT ZONE. SCHEMATIC LIGHTING ONLY AND SUBJECT TO FINAL DESIGN REQUIREMENT
- IWFS WAY FINDING SIGNAGE
- SG SLIDING GATE TO MATCH EXISTING



**02 EXISTING FIRST FLOOR OFFICE PLAN**  
BUILDING 1 - FREIGHT HANDLING

**03 EXISTING FIRST FLOOR OFFICE PLAN**  
BUILDING 2 - LOGISTICS

**01 GROUND FLOOR/SITE PLAN**

Development Area Schedule	
Site Area	
101 DP 1117691 (Existing)	48746.5 sqm
102 DP 1117691	16070.7 sqm
2 DP 28729	20292.3 sqm
<b>Total Site Area</b>	<b>85,109.5 sqm</b>
Existing	
Ex. Bldg 1 Warehouse	13,510 sqm
Ex. Bldg 1 Office	500 sqm
Level 1	485 sqm
Ex. Bldg 2 Warehouse	14,600 sqm
Ex. Bldg 2 Office	150 sqm
Level 1	137 sqm
<b>Existing Building Area</b>	<b>29,382 sqm</b>
Proposed	
Bldg 1 Expansion	1,710 sqm
Bldg 2 Expansion	13,250 sqm
Bldg 2 Dock Office	200 sqm
Ground	200 sqm
Bldg 2 Mezzanine Storage	1,035 sqm
<b>Proposed Building Area</b>	<b>16,195 sqm</b>
<b>Total Building Area</b>	<b>45,577 sqm</b>
Existing Breezeway Area	
Existing Breezeway Expansion	2,350 sqm
<b>Total Breezeway Area</b>	<b>5,676 sqm</b>
Existing Hardstand	
Existing Hardstand	12,443 sqm
Existing Hardstand removed	2,005 sqm
Existing Hardstand retained	10,438 sqm
New Hardstand	16,873 sqm
<b>Total Hardstand</b>	<b>27,311 sqm</b>
Existing Light Duty Area	
Existing Light Duty Area	2,746 sqm
New Light Duty Area	1,570 sqm
<b>Total Light Duty Area</b>	<b>4,316 sqm</b>
Proposed Heavy Duty Area	
Proposed Heavy Duty Area	1,315 sqm
Car parking	
Existing Car Parking	107 cars
Proposed Car Parking	70 cars
Provisional Car Spaces	40 cars
<b>Total Car Spaces provided</b>	<b>217 cars</b>

Client  
**GOODMAN**

Project  
**MAINFREIGHT FACILITY - PROPOSED EXPANSION**  
PRESTONS DISTRIBUTION CENTRE  
26 YARRAWA STREET, PRESTONS

L17, 60 Castlereagh Street, Sydney NSW 2000  
T 02 9230 7400 F

Rev	Description	Date
A	ISSUE FOR DEVELOPMENT APPLICATION	20.02.13
B	OFFICE AND BACKING LAYOUTS ADDED	04.04.13
C	EASTERN TRUCK ENTRY/EXIT WIDENED	09.04.13

Title  
**ground floor / site plan**

Scale  
1:750 (A1) / 1:1500 (A3)

Date  
Apr 2013

Number  
0 7.5 15

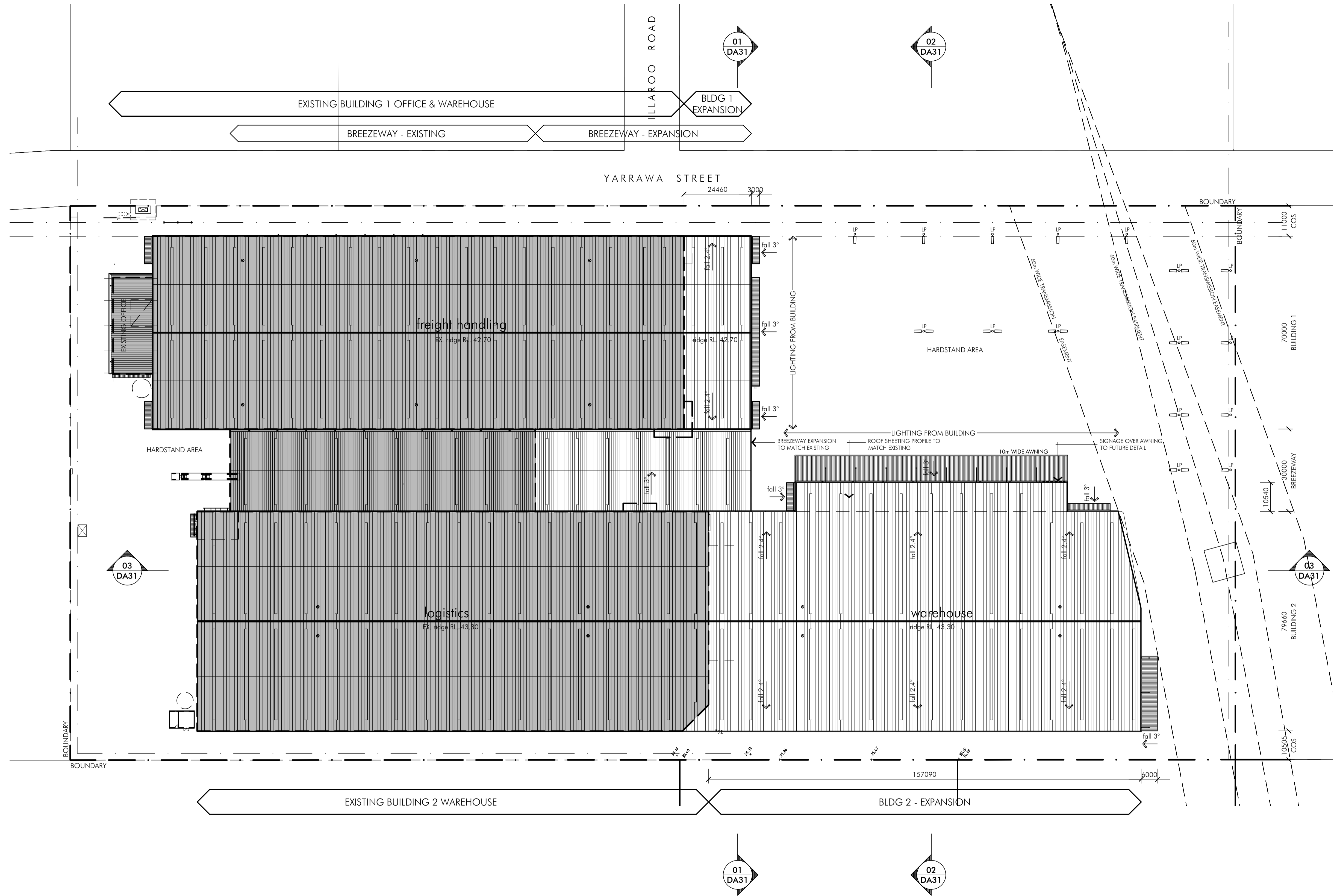
32.5 75m

© copyright nettleton tribe partnership pty ltd

nettleton tribe partnership pty ltd ABN 58 161 683 122

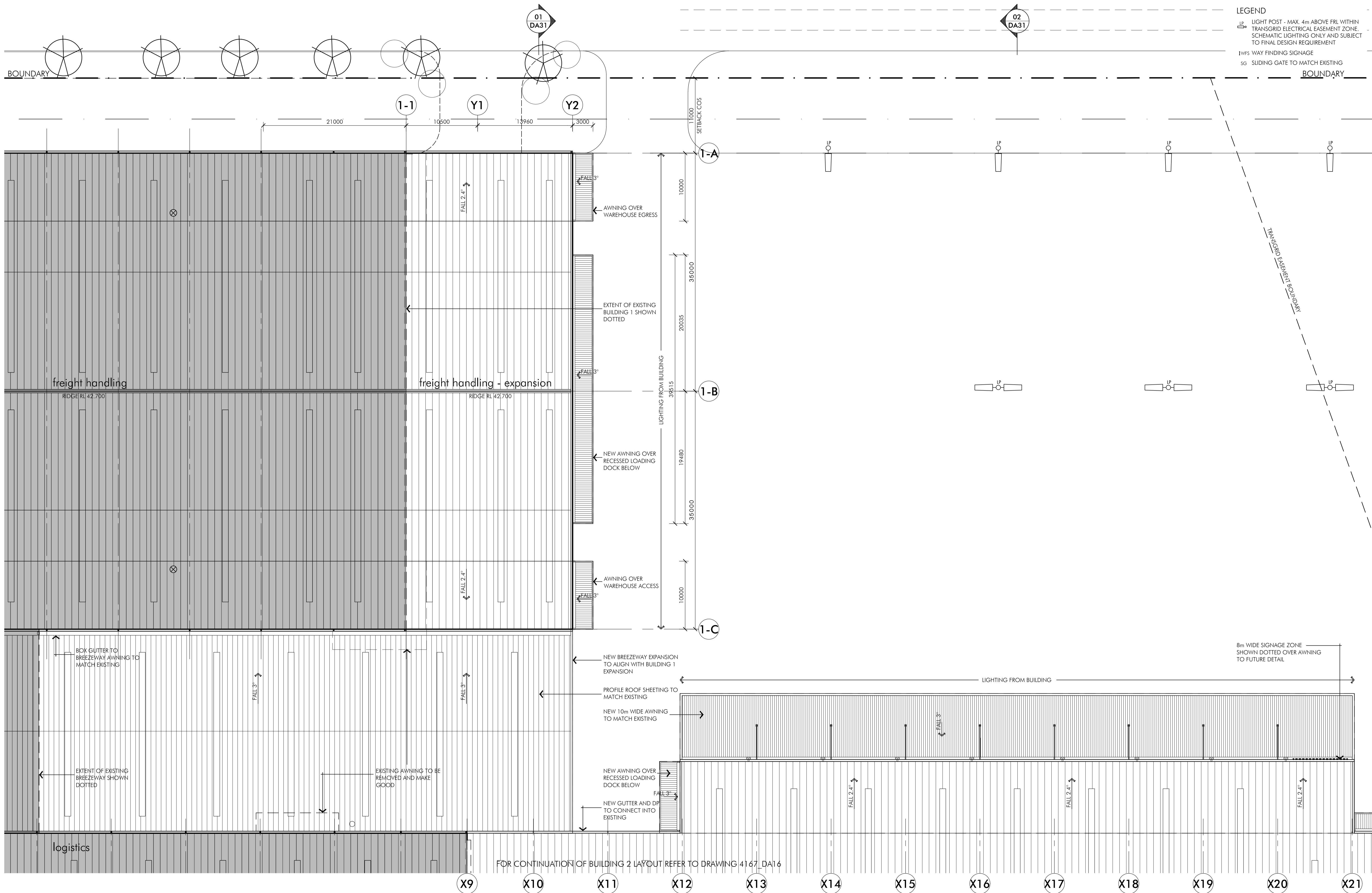
117 willoughby road crows nest nsw 2065  
T 02 9431 6481 F 02 9439 7474  
e.sydny@nettletontribe.com.au w.nettletontribe.com.au

**LEGEND**  
 LP LIGHT POST - MAX. 4m ABOVE FRL WITHIN TRANSGRID ELECTRICAL EASEMENT ZONE. SCHEMATIC LIGHTING ONLY AND SUBJECT TO FINAL DESIGN REQUIREMENT



Rev	Description	Date
A	ISSUE FOR DEVELOPMENT APPLICATION	20.02.2013





**LEGEND**  
 LP LIGHT POST - MAX. 4m ABOVE FRL WITHIN TRANSGRID ELECTRICAL EASEMENT ZONE. SCHEMATIC LIGHTING ONLY AND SUBJECT TO FINAL DESIGN REQUIREMENT  
 LWFS WAY FINDING SIGNAGE  
 SG SLIDING GATE TO MATCH EXISTING

Client  
**GOODMAN**  
 L17, 60 Castlereagh Street, Sydney NSW 2000  
 t 02 9230 7400 f



Project  
**MAINFREIGHT FACILITY - PROPOSED EXPANSION**  
 PRESTONS DISTRIBUTION CENTRE  
 26 YARRAWA STREET, PRESTONS

Issue	Description	Date
A	ISSUE FOR DEVELOPMENT APPLICATION	20.02.2013

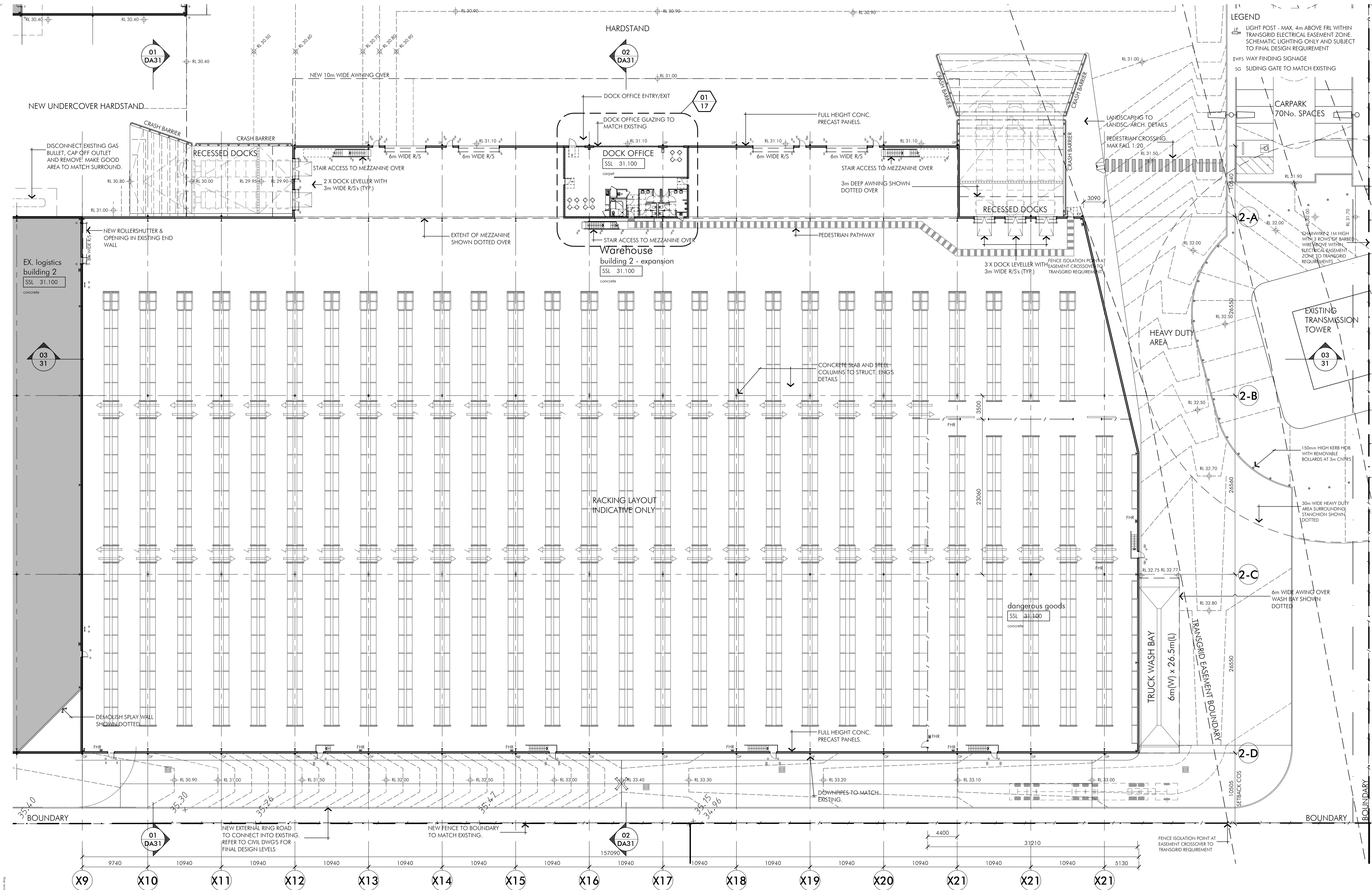
Title  
 Scale  
 Date  
 Number  
 0 2.5 5  
 12.5 25m

**Bldg 1 - Roof Plan**  
 1:250 (A1) / 1:500 (A3)  
 Jan 2013  
**4167\_DA012**



nettleontribe partnership Pty Ltd ABN 58 161 683 122  
 117 willoughby road crows nest nsw 2065  
 t 02 9431 6431 f 02 9439 7474  
 e sydney@nettleontribe.com.au w nettleontribe.com.au

Rev 21, 2013 - 6:09pm P:\4167\4167\_DA012.dwg



- LEGEND**
- LP LIGHT POST - MAX. 4m ABOVE FRL WITHIN TRANSGRID ELECTRICAL EASEMENT ZONE. SCHEMATIC LIGHTING ONLY AND SUBJECT TO FINAL DESIGN REQUIREMENT
  - IWFS WAY FINDING SIGNAGE
  - SG SLIDING GATE TO MATCH EXISTING

Client  
**GOODMAN**

L17, 60 Castlereagh Street, Sydney NSW 2000  
T 02 9230 7400 F

Project  
**GOODMAN**

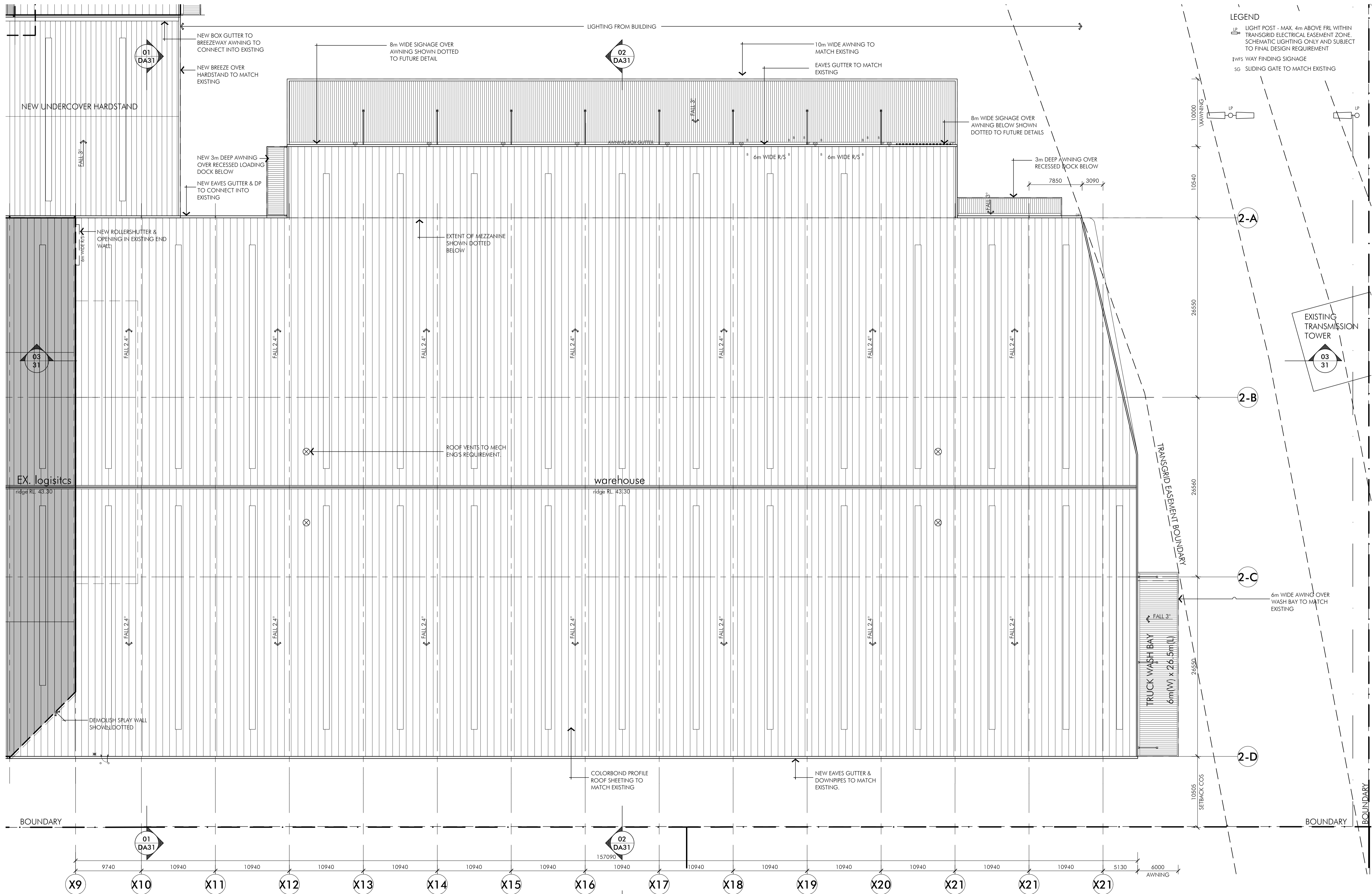
**MAINFREIGHT FACILITY - PROPOSED EXPANSION**  
PRESTONS DISTRIBUTION CENTRE  
26 YARRAWA STREET, PRESTONS

Rev	Description	Date
A	ISSUE FOR DEVELOPMENT APPLICATION	20.02.2013

**Bldg 2 - Ground Floor Plan**  
1:250 (A1) / 1:500 (A3)  
Feb 2013  
**4167\_DA015**  
10m

**nt** nettleontribe  
nettleontribe partnership Pty Ltd ABN 58 161 683 122  
117 willoughby road crows nest nsw 2065  
T 02 9431 6431 F 02 9439 7474  
© sydney@nettleontribe.com.au w.nettleontribe.com.au





**LEGEND**

- LP LIGHT POST - MAX. 4m ABOVE FRL WITHIN TRANSGRID ELECTRICAL EASEMENT ZONE. SCHEMATIC LIGHTING ONLY AND SUBJECT TO FINAL DESIGN REQUIREMENT
- IWFS WAY FINDING SIGNAGE
- SG SLIDING GATE TO MATCH EXISTING

Client  
**GOODMAN**  
 L17, 60 Castlereagh Street, Sydney NSW 2000  
 T 02 9230 7400 F



Project  
**MAINFREIGHT FACILITY - PROPOSED EXPANSION**  
 PRESTONS DISTRIBUTION CENTRE  
 26 YARRAWA STREET, PRESTONS

Issue	Description	Date
A	ISSUE FOR DEVELOPMENT APPLICATION	20.02.2013

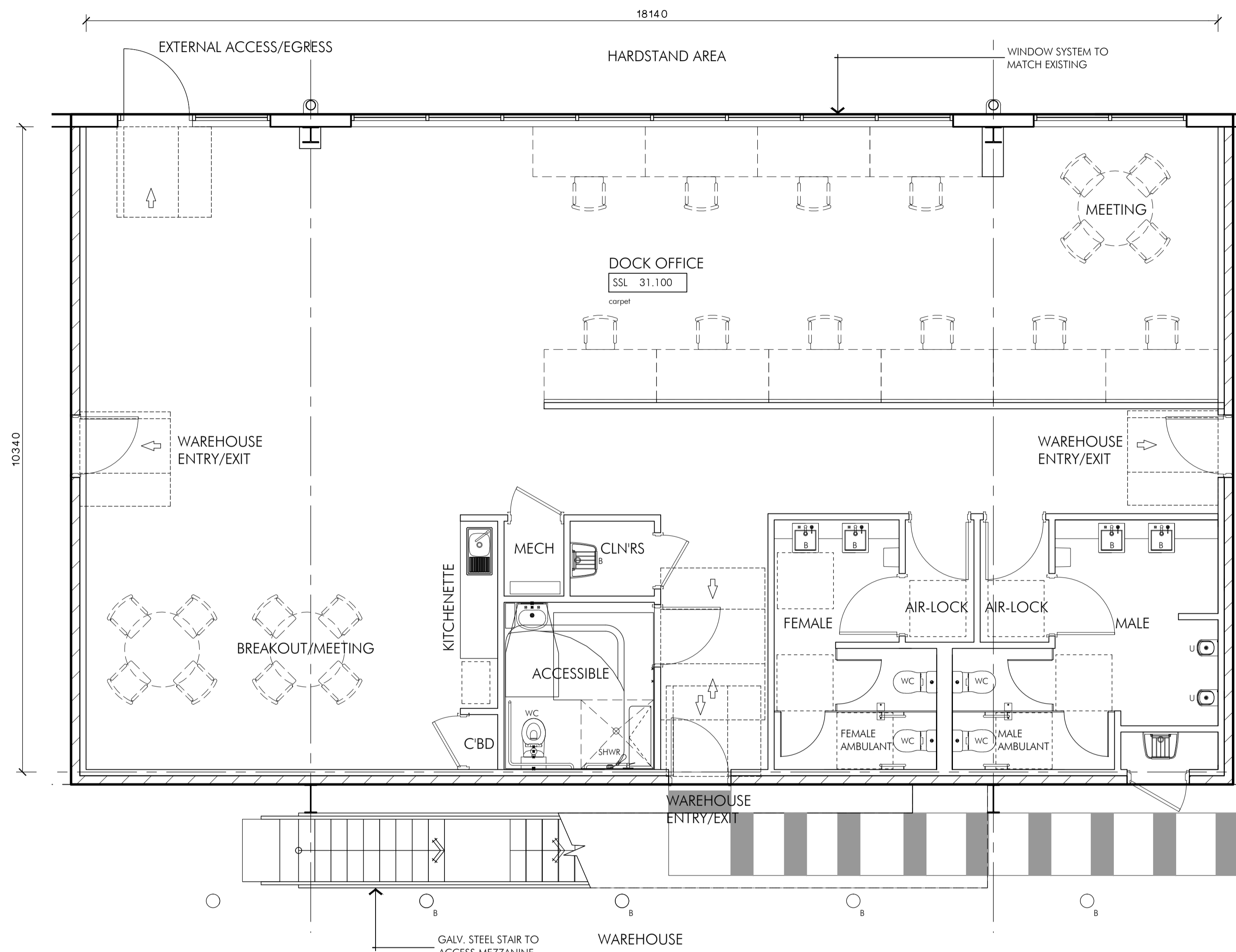
Title  
 Scale  
 Date  
 Number  
 0 1 2

**Bldg 2 - Roof Plan**  
 1:250 (A1) / 1:500 (A3)  
 Jan 2012  
**4167\_DA017**  
 10m



nettleontribe partnership pty ltd ABN 58 161 683 122  
 117 willoughby road crows nest nsw 2065  
 T 02 9431 6481 F 02 9439 7474  
 e sydney@nettleontribe.com.au w nettleontribe.com.au

File: 21\_2013\_4167\_Plan 017 DA017.dwg

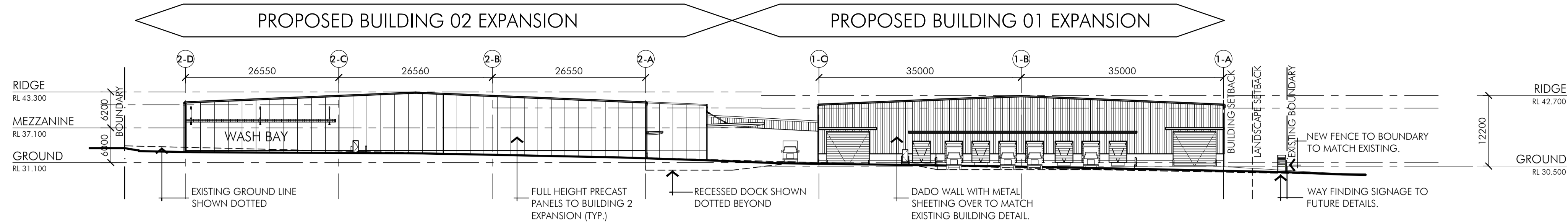


01 DOCK OFFICE LAYOUT  
1:50@A1

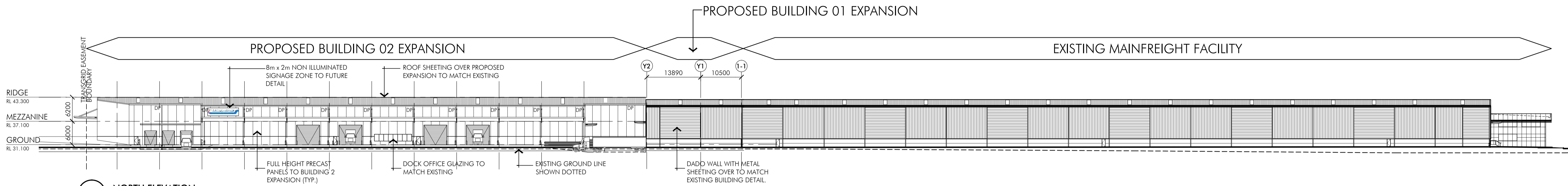
GALV. STEEL STAIR TO ACCESS MEZZANINE OVER.

WAREHOUSE

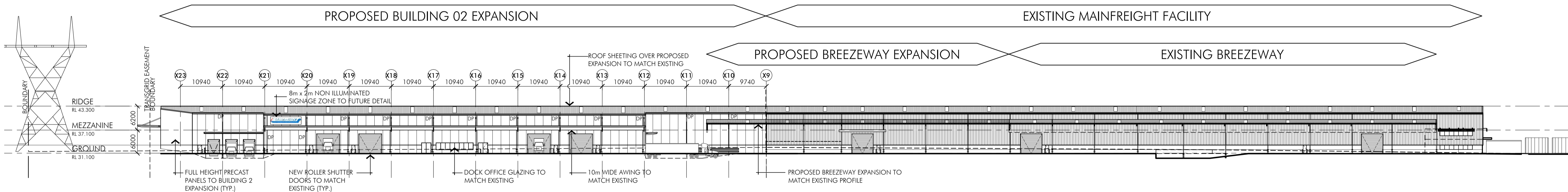
Issue	Description	Date
A	ISSUE FOR DEVELOPMENT APPLICATION	20.02.2013



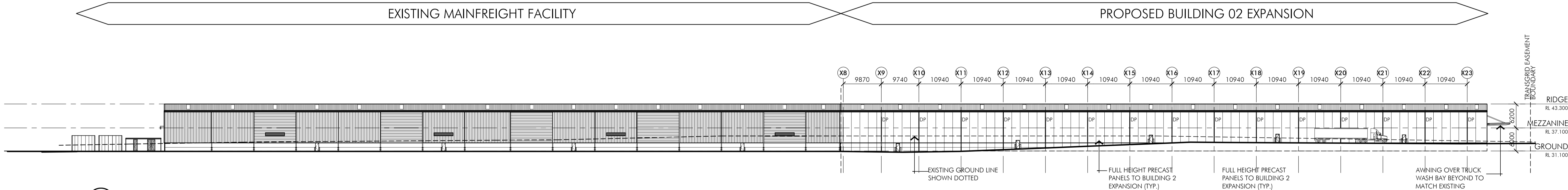
01 EAST ELEVATION  
1:500@A1



02 NORTH ELEVATION  
1:500@A1



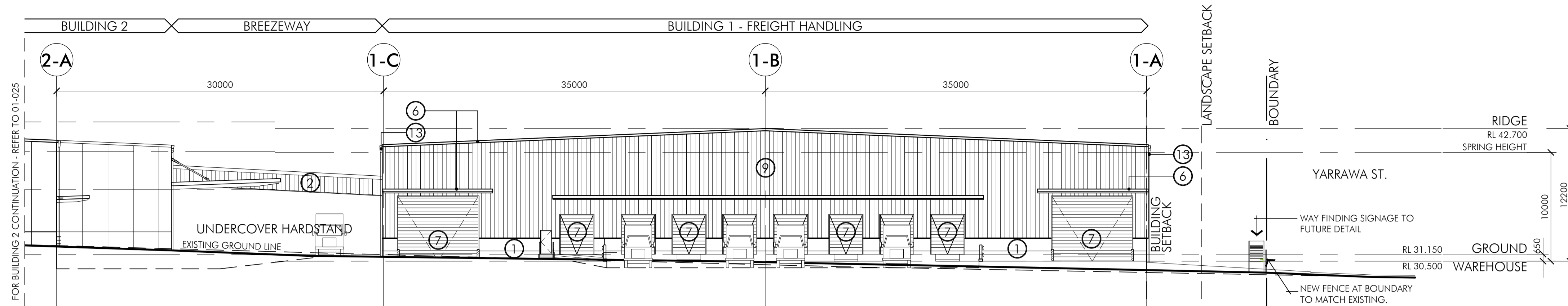
04 INTERIOR NORTH ELEVATION  
1:500@A1



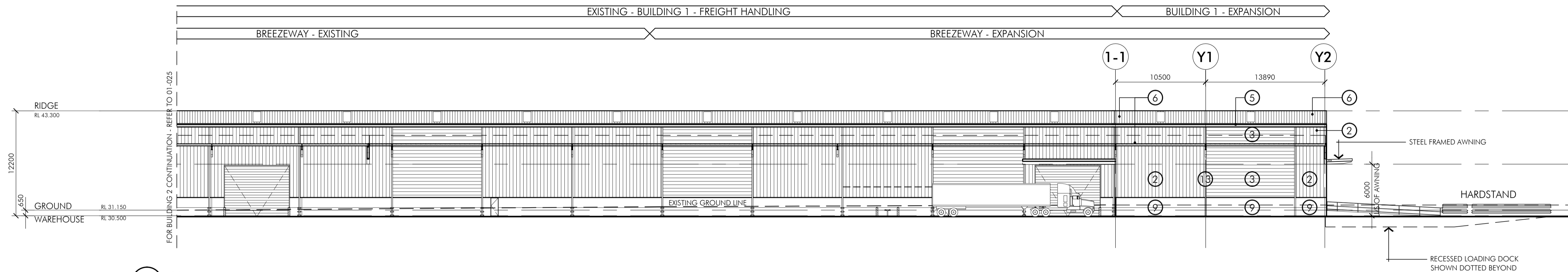
03 SOUTH ELEVATION  
1:500@A1

Issue	Description	Date
A	ISSUE FOR DEVELOPMENT APPLICATION	20.02.2013

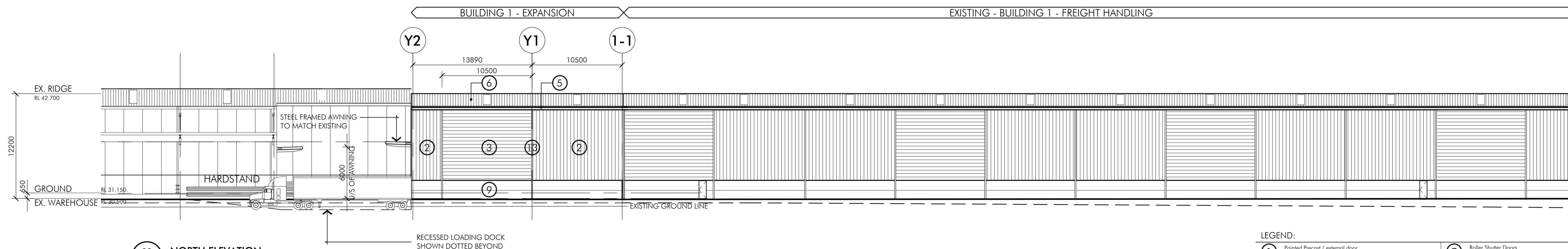
Title  
Scale  
Date  
Number  
0 5 10  
25 50m



01 EAST ELEVATION  
FREIGHT HANDLING - BUILDING 1



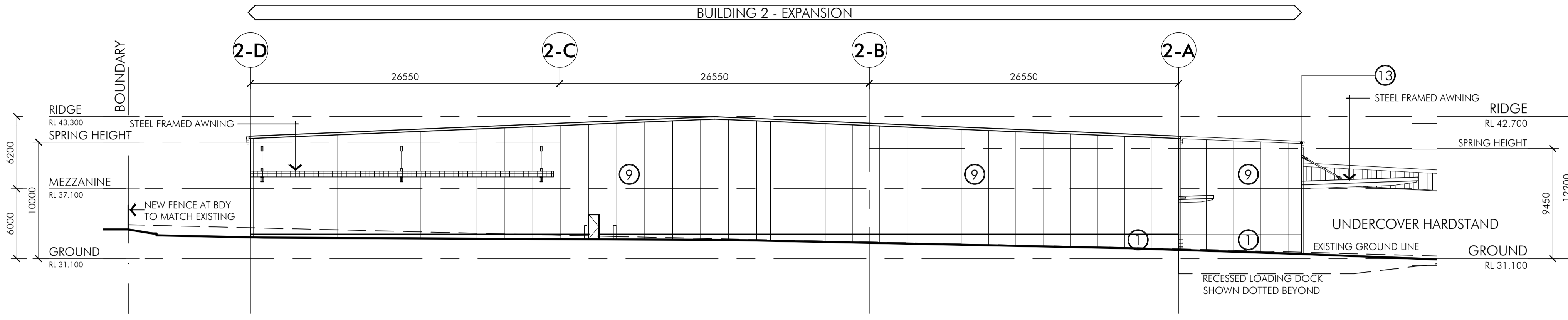
02 SOUTH ELEVATION  
FREIGHT HANDLING - BUILDING 1



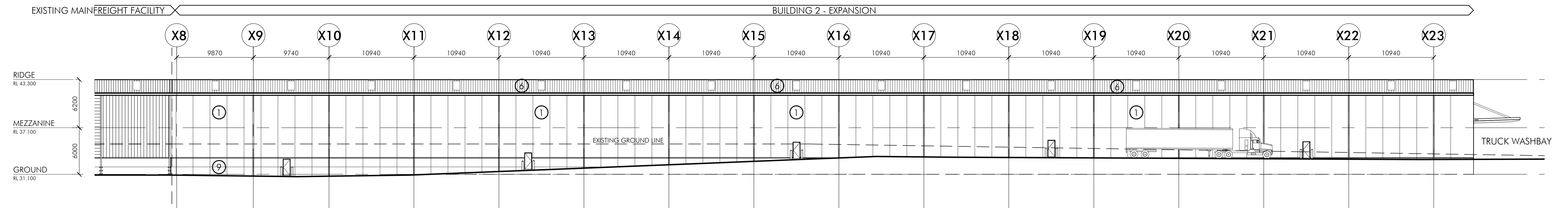
03 NORTH ELEVATION  
FREIGHT HANDLING - BUILDING 1

LEGEND:

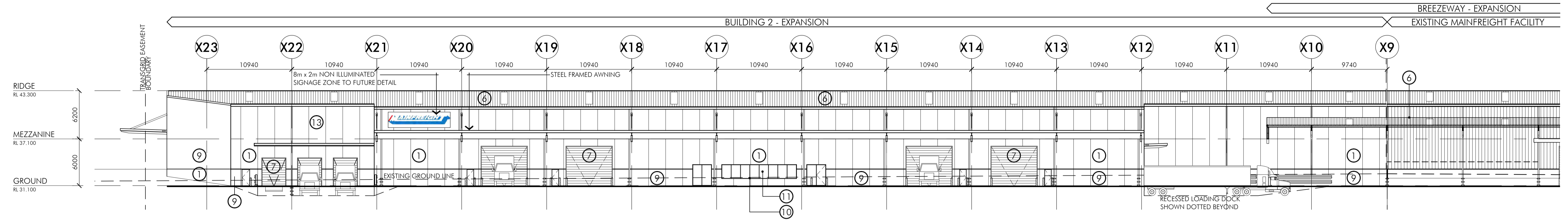
1	Painted Precast / external door (Colour - Dulux CC2 - Mainfreight Blue)	7	Roller Shutter Doors (Colour - Dulux CC2 - Mainfreight Blue)	12	Powdercoat Aluminium Sunshade / Louvre (Colour - Precious Silver Pearl)
2	Profiled Metal Sheeting (wall cladding) - Trimdek Colour - Dulux CC2 - Mainfreight Blue (installed vertically)	8	Office wall cladding - Alucabond (Colour - white 16)	13	Stainless Steel Downpipes (Colour - 316 Stainless Steel)
3	Profiled Metal Sheeting (wall cladding) - Trimdek Colour - Dulux CC2 - Mainfreight Blue (installed horizontally)	9	Painted precast / external sheeting / door (Colour - sherebo white)	14	Honed Blockwork (Colour - Alabaster)
4	Profiled Metal Sheeting (wall cladding) - Trimdek Colour - Dulux 668B 10/298 - Mainfreight Deep Blue (installed horizontally)	10	Powdercoat Aluminium Window Frame (Colour - Precious Silver Pearl)	B	Ballard
5	Awning fascia, downpipes and gutter (wall cladding) - Trimdek Colour - Dulux 668B 10/298 - Mainfreight Deep Blue	11	A) Window Glazing (Colour - TS21 on Clear)	ADP	Awning downpipe
6	Profiled Roof Sheeting - Trimdek Colour - Zincalume		B) Window Glazing with backing board behind (Colour - TS21 on Clear)	DP	Downpipe
				FJ	False joint
				PJ	Panel joint
				GJ	Glass silicon (clear) joint with mullion behind
				O/F	Overflow channels to eng's requirements



01 EAST ELEVATION  
1:250@A1



02 SOUTH ELEVATION  
1:250@A1

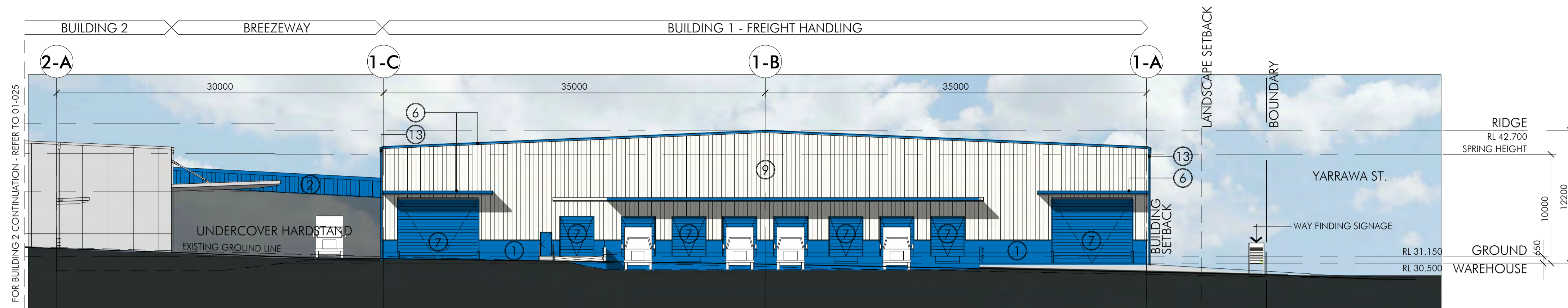


03 NORTH ELEVATION  
1:250@A1

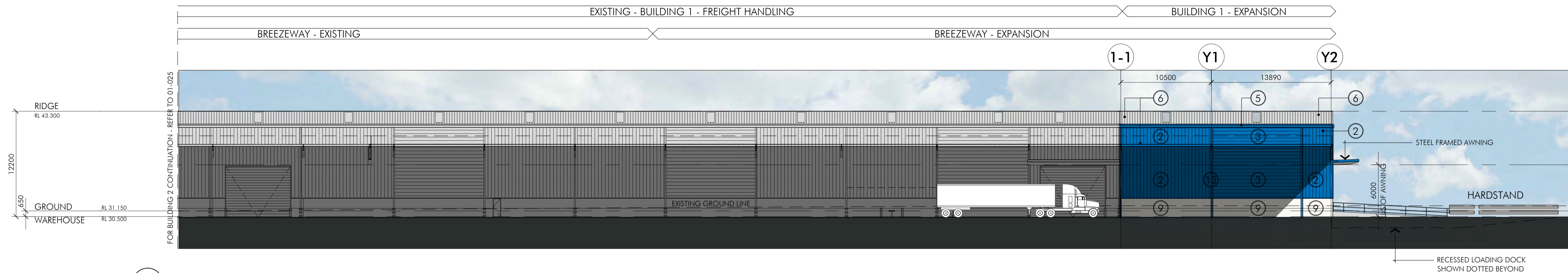
**LEGEND:**

1	Painted Precast / external door (Colour - Dulux CC2 - Mainfreight Blue)	7	Roller Shutter Doors (Colour - Dulux CC2 - Mainfreight Blue)	12	Powdercoat Aluminium Sunshade / Louvre (Colour - Precious Silver Pearl)
2	Profiled Metal Sheeting (wall cladding) - Trimdek Colour - Dulux CC2 - Mainfreight Blue (installed vertically)	8	Office wall cladding - Alucabond (Colour - white 16)	13	Stainless Steel Downpipes (Colour - 316 Stainless Steel)
3	Profiled Metal Sheeting (wall cladding) - Trimdek Colour - Dulux CC2 - Mainfreight Blue (installed horizontally)	9	Painted precast / external sheeting / door (Colour - Alabaster)	14	Honed Blockwork (Colour - Alabaster)
4	Profiled Metal Sheeting (wall cladding) - Trimdek Colour - Dulux 6688 10/298 - Mainfreight Deep Blue (installed horizontally)	10	Powdercoat Aluminium Window Frame (Colour - Precious Silver Pearl)	B	Ballard
5	Awning fascia, downpipes and gutter (wall cladding) - Trimdek Colour - Dulux 6688 10/298 - Mainfreight Deep Blue	11	A) Window Glazing (Colour - TS21 on Clear)	ADP	Awning downpipe
6	Profiled Roof Sheeting - Trimdek Colour - Zincalume		B) Window Glazing with backing board behind (Colour - TS21 on Clear)	DP	Downpipe
				FJ	False joint
				PJ	Panel joint
				GJ	Glass silicon (clear) joint with mullion behind
				O/F	Overflow channels to eng's requirements





01 EAST ELEVATION  
FREIGHT HANDLING - BUILDING 1



02 SOUTH ELEVATION  
FREIGHT HANDLING - BUILDING 1

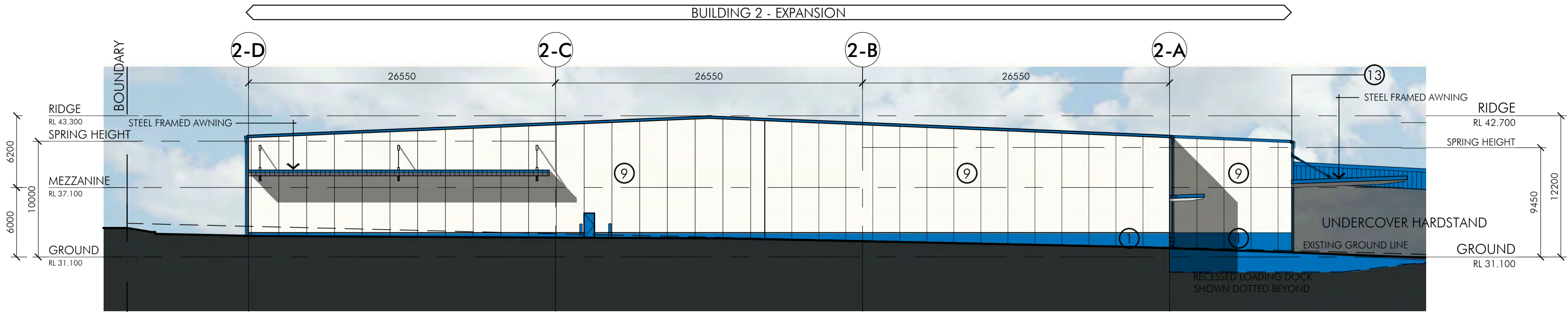


03 NORTH ELEVATION  
FREIGHT HANDLING - BUILDING 1

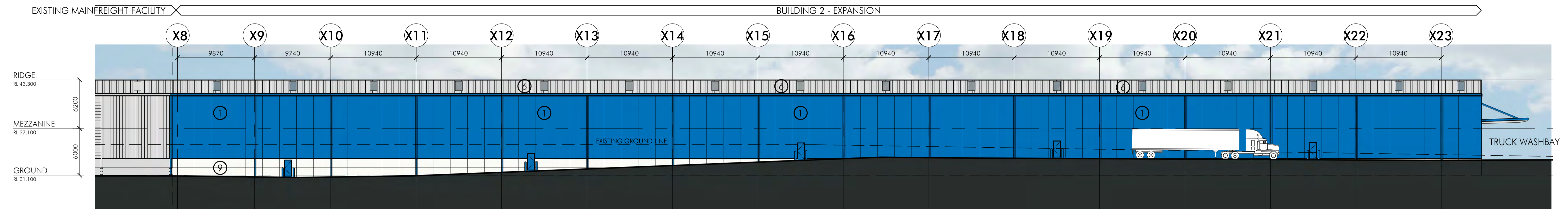
LEGEND:

- Painted Precast / external door  
(Colour - Dulux CC2 - Mainfreight Blue)
- Profiled Metal Sheeting (wall cladding) - Trimdek  
Colour - Dulux CC2 - Mainfreight Blue (installed vertically)
- Profiled Metal Sheeting (wall cladding) - Trimdek  
Colour - Dulux CC2 - Mainfreight Blue (installed horizontally)
- Profiled Metal Sheeting (wall cladding) - Trimdek  
Colour - Dulux 668B 10/298 - Mainfreight Deep Blue (installed horizontally)
- Awning fascia, downpipes and gutter (wall cladding) - Trimdek  
Colour - Dulux 668B 10/298 - Mainfreight Deep Blue
- Profiled Roof Sheeting - Trimdek  
Colour - Zincalume
- Roller Shutter Doors  
(Colour - Dulux CC2 - Mainfreight Blue)
- Office wall cladding - Alucabond  
(Colour - white 16)
- Painted precast / external sheeting / door  
(Colour - firebaw white)
- Powdercoat Aluminium Window Frame  
(Colour - Precious Silver Pearl)
- A) Window Glazing  
(Colour - TS21 on Clear)
- B) Window Glazing with backing board behind  
(Colour - TS21 on Clear)
- Powdercoat Aluminium Sunshade / Louvre  
(Colour - Precious Silver Pearl)
- Stainless Steel Downpipes  
(Colour - Dulux CC2 - Mainfreight Blue)

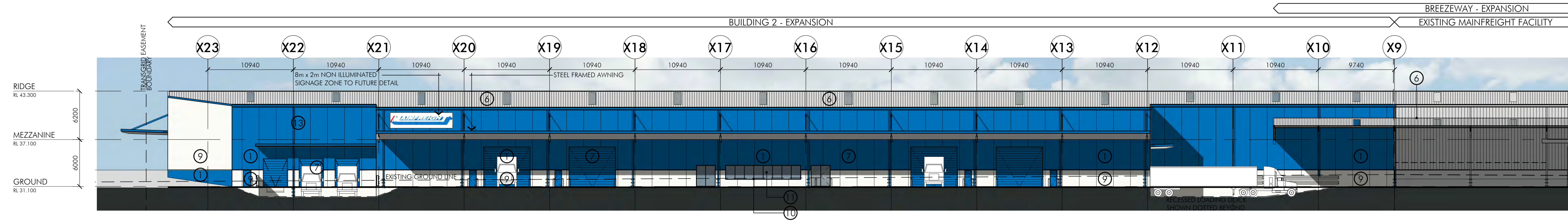
Issue	Description	Date
A	ISSUE FOR DEVELOPMENT APPLICATION	20.02.13



01 EAST ELEVATION  
1:250@A1

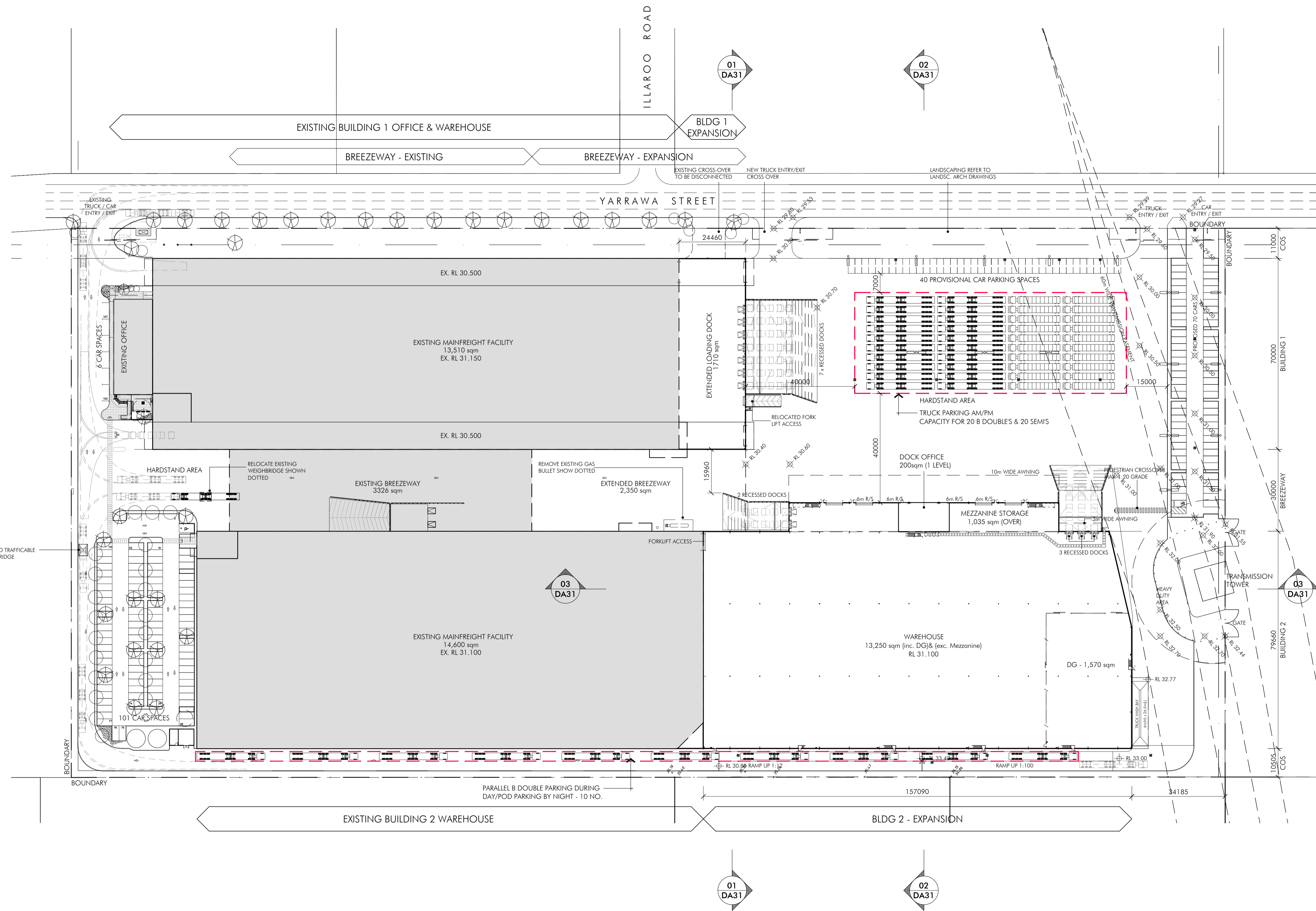


02 SOUTH ELEVATION  
1:250@A1



03 NORTH ELEVATION  
1:250@A1

- LEGEND:**
- Painted Precast / external door (Colour - Dulux CC2 - Mainfreight Blue)
  - Profiled Metal Sheeting (wall cladding) - Trimdek (Colour - Dulux CC2 - Mainfreight Blue (installed vertically))
  - Profiled Metal Sheeting (wall cladding) - Trimdek (Colour - Dulux CC2 - Mainfreight Blue (installed horizontally))
  - Profiled Metal Sheeting (wall cladding) - Trimdek (Colour - Dulux 668B 10/298 - Mainfreight Deep Blue (installed horizontally))
  - Awning fascia, downpipes and gutter (wall cladding) - Trimdek (Colour - Dulux 668B 10/298 - Mainfreight Deep Blue)
  - Profiled Roof Sheeting - Trimdek (Colour - Zincalume)
  - Roller Shutter Doors (Colour - Dulux CC2 - Mainfreight Blue)
  - Office wall cladding - Alucabond (Colour - white 16)
  - Painted precast / external sheeting / door (Colour - firebaw white)
  - Powdercoat Aluminium Window Frame (Colour - Precious Silver Pearl)
  - A) Window Glazing (Colour - TS21 on Clear)
  - B) Window Glazing with backing board behind (Colour - TS21 on Clear)
  - Powdercoat Aluminium Sunshade / Louvre (Colour - Precious Silver Pearl)
  - Stainless Steel Downpipes (Colour - Dulux CC2 - Mainfreight Blue)



Issue	Description	Date
A	ISSUE FOR DEVELOPMENT APPLICATION	20.02.2013