

North Eveleigh Affordable Housing NatHERS Assessment

28th March 2013

SYD1300300

Client

City West Housing Pty Ltd

WSP Buildings (Pty) Ltd

ABN 47 005 113 468

Ground Floor, 41 McLaren St
PO Box 6245, North Sydney
NSW 2060 Australia

T. +61 2 8907 0900

F. +61 2 9957 4127

wspbultecology@wspgroup.com

www.wspbultecology.com

Executive Summary

WSP Built Ecology assessed the thermal comfort of the dwellings in the North Eveleigh Affordable Housing project to determine if compliance with the thermal comfort section of NSW Government Building Sustainability Index (“BASIX”) is achieved.

The proposed development comprises of 88 Class 2 dwellings located in a single 6 storey building.

Thermal comfort was assessed using BERS Pro version 4.2, produced by Solar Logic which is computer software used to simulate the thermal performance of dwellings in Australian climates. It has been developed as a residential energy rating tool for the Nationwide House Energy Rating Scheme (“NatHERS”), and has achieved provisional accreditation to the NatHERS Software Accreditation Protocol.

Based on the modelling performed, the dwellings in the North Eveleigh Affordable Housing project pass the minimum requirements of BASIX, subject to the details set out in this report being implemented in the design.

TABLE OF CONTENTS

1.	Introduction	2
1.1.	BASIX	2
1.2.	Simulation Software	2
1.3.	Sources of Information	3
1.4.	Limitations	3
2.	BERS Pro	4
2.1.	Modelling Inputs	4
2.2.	Results	6
3.	Conclusion	8

LIST OF TABLES

Table 1: Window Properties.....	4
Table 2: Shading Properties	4
Table 3 - Construction Properties	5
Table 4 - Area corrected heating and cooling loads	6
Table 5 - Dwelling Type Area Schedule	7

Issue/Status	Revision	Date Issued	Author	Checked	Approved	Comment
Final	00	26/03/2013	LXC	KWF	KWF	For DA Application
Final	01	28/03/2013	LXC	KWF	KWF	For DA Application

1. Introduction

WSP Built Ecology assessed the residential units of the North Eveleigh Affordable Housing project, to determine if compliance with the thermal comfort section of BASIX is achieved.

1.1. BASIX

BASIX is an online tool that is used to rate the energy and water efficiency of residential dwellings in NSW. The tool sets minimum energy and water reduction targets which must be met through the design of the building and the selection of fixtures and fittings.

BASIX applies to all new dwellings including single dwellings, townhouses and low-rise, mid-rise and high-rise developments in NSW. BASIX also applies to all residential alterations and additions with a total cost of works of \$100,000 or more; and all residential developments with a total estimated cost of works of \$50,000 or more.

Design inputs such as location, size, size, construction material, water source and fittings are used to determine the potential energy and water consumption of a new home or dwelling.

BASIX is divided into three sections:

1. Water;
2. Thermal Comfort; and
3. Energy.

Thermal comfort is assessed by simulation, which involves the modelling of each dwelling that is to be assessed by an accredited assessor. This assesses the potential of the dwelling to provide thermal comfort passively, thereby reducing energy requirements for heating and cooling. Annual heating and cooling loads are entered into the BASIX tool to determine if the dwelling passes the maximum heating and cooling loads allowed by the program.

The heating and cooling loads also affect the 'Energy' score with more efficient dwellings performing better in the 'Energy' section. The 'Energy' score is also affected by other inputs such as efficiency of appliances, heating and cooling system selection, hot water systems and also factors such as use of any renewable energy.

1.2. Simulation Software

BERS Pro, produced by Solar Logic is computer software used to simulate the thermal performance of dwellings in Australian climates. It has been developed as a residential energy rating tool for the Nationwide House Energy Rating Scheme ("NatHERS"), and has achieved provisional accreditation to the NatHERS Software Accreditation Protocol.

User inputs such as area uses, orientation, climate zone, building materials and air conditioning requirements are used to calculate heating and cooling loads for the dwelling to see if they are within the limits set by the BASIX tool.

1.3. Sources of Information

This NatHERS assessment has been based on the following architectural design documentation provided by Mode Design:

- Plan and Section drawings by Architectus, dated 27th March 2013; and
- Correspondence between Architectus and WSP Built Ecology.

1.4. Limitations

The results from the BERS Pro modelling shown within this report are limited in accuracy by the following factors:

- Actual energy consumption will also be dependent on the climate, occupants and their behaviour which the software does not take into account;
- Construction details being as advised by Architectus;
- Orientation and apartment layout being as shown on the drawings.

2. BERS Pro

2.1. Modelling Inputs

This section identifies the inputs for windows, shading and constructions which were used for the BERS Pro modelling on all the dwellings.

2.1.1. Windows

Table 1 identifies the glazing properties (window total value only) used as part of the BERS Pro models.

Table 1: Window Properties

Type	Glass	Frame	U-value	Solar Heat Gain Coefficient (SHGC)
All glazing	Single glazing	Aluminium	6.57	0.74

2.1.2. Shading and blinds

Table 2 identifies the properties of the shading applied to the windows used as part of the BERS Pro models. Note that Holland blinds are included as required by the NatHERS modeling protocol but are not required to be installed as part of the development.

Table 2: Shading Properties

Type	Internal	External
Sliding Glass Doors	Holland Blind	-
Awning Windows	Holland Blind	-
Fixed Windows	Holland Blind	-
Sliding Windows	Holland Blind	-

Please note that the models have accounted for the following:

- The overhang of any balconies above each dwelling, built in as eaves;
- Any shading from overshadowing buildings; and
- Any balcony walls between dwellings, built in as shading screens and wing walls.

2.1.3. Constructions

Table 3 identifies the wall, floor, ceiling and roof construction properties used as part of the BERS Pro models.

Table 3 - Construction Properties

NatHERS Modelling Parameters	
External walls	<p>Central block North (Ground Floor) = Brick veneer on steel studs with insulation (R2.4) North (Levels 1-5) = Concrete block with insulation (R2.7) with aluminium framed glazing North (Level 6) = Zinc clad metal frame wall with insulation (R2.6) South = Brick veneer on steel studs with insulation (R2.4)</p> <p>East and West blocks: All facades = Brick veneer on steel studs with insulation (R2.4)</p>
Party walls	<p>AAC No insulation</p>
Internal walls	<p>Cavity panel</p>
Roof	<p>Central block Lightweight zinc clad mansard roof with insulation (R3.2)</p> <p>East and West blocks, and Units 504 and 505: Concrete roof with insulation (R3)</p>
Floors	<p>Concrete</p>
Floor Coverings	<p>All habitable areas, carpet. Tiles in bathrooms, kitchens and laundries.</p>
Floor above basement	<p>Concrete with insulation (R1.6)</p>
Ceilings	<p>Plasterboard</p>

2.2. Results

This section describes the results from the modeling performed. In summary the current designs of the dwellings have achieved the minimum requirements of BASIX without amendments. Their area corrected heating and cooling loads have been identified in Table 4;

Table 4 - Area corrected heating and cooling loads

Dwelling	Predicted load (MJ/m ² .yr)		Star rating
	Cooling Load	Heating Load	
G01	16.5	19.2	7.0
G02, G03	17.0	26.2	6.5
G04	16.8	29.1	6.0
G05	12.9	14.2	7.5
G06	17.4	8.8	7.5
101, 201, 301, 401, 501	41.6	22.1	5.0
102, 202, 302, 402, 502	46.6	12.2	5.0
103, 203, 303, 403, 503	11.6	19.1	7.5
104, 204, 304, 404	30.1	19.6	6.0
105, 205, 305, 405	27.3	10.8	7.0
106, 108, 110, 206, 208, 210, 306, 308, 310, 406, 408, 410	25.7	27.0	5.5
107, 109, 207, 209, 307, 309, 407, 409	21.3	31.1	5.5
111, 211, 311, 411	23.0	43.8	4.5
112, 212, 312, 412	10.5	18.0	7.5
113, 213, 313, 413	16.2	11.9	7.5
114, 214, 314, 414	30.4	17.0	6.0
115, 215, 315, 415	30.9	21.2	5.5
116, 216, 316	35.9	46.8	4.0
504	31.4	25.2	5.5
505	22.8	23.6	6.0
512	8.3	23.9	7.0
513	12.1	21.1	7.0
514	13.8	29.8	6.5
515	14.4	39.1	5.5
416	23.7	41.2	5.0
506, 508, 510	20.9	38.8	5.0
507, 509	19.6	38.3	5.5
511	20.0	44.3	5.0

601	23.3	33.1	5.5
602	43.3	20.4	5.0
603	10.7	34.1	6.5

Table 5 - Dwelling Type Area Schedule

Dwelling	Conditioned Area m ²	Unconditioned Area m ²
G01	81.4	6.6
G02, G03	83.7	4.5
G04	83.7	4.5
G05	64.9	6.4
G06	91.5	9.4
101, 201, 301, 401, 501	66	6.8
102, 202, 302, 402, 502	77.3	4.8
103, 203, 303, 403, 503	64.9	6.4
104, 204, 304, 404	42.8	6.4
105, 205, 305, 405	42.8	5.5
106, 108, 110, 206, 208, 210, 306, 308, 310, 406, 408, 410	40.8	8.1
107, 109, 207, 209, 307, 309, 407, 409	40.8	8.1
111, 211, 311, 411	40.8	8.1
112, 212, 312, 412	64.9	6.4
113, 213, 313, 413	74.6	6.2
114, 214, 314, 414	49.6	6.7
115, 215, 315, 415	49.6	6.7
116, 216, 316	46.8	4.8
504	42.8	6.4
505	42.8	5.5
512	64.9	6.4
513	74.6	6.2
514	49.6	6.7
515	49.6	6.7
416	89.6	4.3
506, 508, 510	84.7	11.4
507, 509	94	2.0
511	94	2.0
601	66	6.8
602	77.3	4.8
603	72	1.0

3. Conclusion

Based on the BERS Pro modelling performed, the dwellings in North Eveleigh Affordable Housing project pass the minimum requirements of BASIX, subject to the details set out in this report being implemented in the design.

These results have been entered into the BASIX Certificate, shown in Appendix C.

APPENDIX A – NatHERS CERTIFICATES



NatHERS Rated
5.9 STARS*

*www.nathers.gov.au



BUILDING ENERGY EFFICIENCY CERTIFICATE

City West Housing Pty Ltd
ISSUED TO

Wilson Street
ADDRESS

Site Lot Lot 3 over Lot 50

North Eveleigh

NSW

2015

1005141831
CERTIFICATION NUMBER

20/03/2013
DATE

56
CLIMATE ZONE

BERS Professional - v4.2.110811 (BERS Professional)
SOFTWARE

25.0 MJ/m² pa
SIMULATED ENERGY CONSUMPTION - HEATING

24.8 MJ/m² pa
SIMULATED ENERGY CONSUMPTION - COOLING

49.8 MJ/m² pa
TOTAL SIMULATED ENERGY CONSUMPTION

Katie Fallowfield
ASSESSOR NAME

20940
ASSESSOR NUMBER

Built Ecology
COMPANY

ASSESSOR SIGNATURE

Issued by a BUILDING THERMAL PERFORMANCE ASSESSOR accredited by the Association of Building Sustainability Assessors to provide NatHERS house energy ratings.



NatHERS Rated 7.0 STARS*

*www.nathers.gov.au



BUILDING ENERGY EFFICIENCY CERTIFICATE

1005141849
 CERTIFICATION NUMBER

20/03/2013
 DATE

56
 CLIMATE ZONE

BERS Professional - v4.2.110811 (BERS Professional)
 SOFTWARE

19.2 MJ/m² pa
 SIMULATED ENERGY CONSUMPTION - HEATING

16.5 MJ/m² pa
 SIMULATED ENERGY CONSUMPTION - COOLING

35.7 MJ/m² pa
 TOTAL SIMULATED ENERGY CONSUMPTION

81.4 m²
 FLOOR AREA - CONDITIONED

6.6 m²
 FLOOR AREA - UNCONDITIONED

88.0 m²
 FLOOR AREA - TOTAL

City West Housing Pty Ltd
 ISSUED TO

Unit G01 Wilson Street
 ADDRESS

Site Lot Lot 3 over Lot 50

North Eveleigh

NSW

2015

Katie Fallowfield
 ASSESSOR NAME

20940
 ASSESSOR NUMBER

Built Ecology
 COMPANY

ASSESSOR SIGNATURE

Issued by a BUILDING THERMAL PERFORMANCE ASSESSOR accredited by the Association of Building Sustainability Assessors to provide NatHERS house energy ratings.



NatHERS Rated 6.5 STARS*

*www.nathers.gov.au



BUILDING ENERGY EFFICIENCY CERTIFICATE

City West Housing Pty Ltd

ISSUED TO

Unit G02 Wilson Street

ADDRESS

Site Lot Lot 3 over Lot 50

North Eveleigh

NSW

2015

1005141864

CERTIFICATION NUMBER

20/03/2013

DATE

56

CLIMATE ZONE

BERS Professional - v4.2.110811 (BERS Professional)

SOFTWARE

26.2 MJ/m² pa

SIMULATED ENERGY CONSUMPTION - HEATING

17.0 MJ/m² pa

SIMULATED ENERGY CONSUMPTION - COOLING

43.2 MJ/m² pa

TOTAL SIMULATED ENERGY CONSUMPTION

83.7 m²

FLOOR AREA - CONDITIONED

4.5 m²

FLOOR AREA - UNCONDITIONED

88.2 m²

FLOOR AREA - TOTAL

Katie Fallowfield

ASSESSOR NAME

20940

ASSESSOR NUMBER

Built Ecology

COMPANY

ASSESSOR SIGNATURE

Issued by a BUILDING THERMAL PERFORMANCE ASSESSOR accredited by the Association of Building Sustainability Assessors to provide NatHERS house energy ratings.



NatHERS Rated 6.5 STARS*

*www.nathers.gov.au



BUILDING ENERGY EFFICIENCY CERTIFICATE

1005141906
 CERTIFICATION NUMBER

20/03/2013
 DATE

56
 CLIMATE ZONE

BERS Professional - v4.2.110811 (BERS Professional)
 SOFTWARE

26.2 MJ/m² pa
 SIMULATED ENERGY CONSUMPTION - HEATING

17.0 MJ/m² pa
 SIMULATED ENERGY CONSUMPTION - COOLING

43.2 MJ/m² pa
 TOTAL SIMULATED ENERGY CONSUMPTION

83.7 m²
 FLOOR AREA - CONDITIONED

4.5 m²
 FLOOR AREA - UNCONDITIONED

88.2 m²
 FLOOR AREA - TOTAL

City West Housing Pty Ltd
 ISSUED TO

Unit G03 Wilson Street
 ADDRESS

Site Lot Lot 3 over Lot 50

North Eveleigh

NSW

2015

Katie Fallowfield
 ASSESSOR NAME

20940
 ASSESSOR NUMBER

Built Ecology
 COMPANY

ASSESSOR SIGNATURE

Issued by a BUILDING THERMAL PERFORMANCE ASSESSOR accredited by the Association of Building Sustainability Assessors to provide NatHERS house energy ratings.



NatHERS Rated 6.0 STARS*

*www.nathers.gov.au



BUILDING ENERGY EFFICIENCY CERTIFICATE

1005141930

CERTIFICATION NUMBER

20/03/2013

DATE

56

CLIMATE ZONE

BERS Professional - v4.2.110811 (BERS Professional)

SOFTWARE

29.1 MJ/m² pa

SIMULATED ENERGY CONSUMPTION - HEATING

16.8 MJ/m² pa

SIMULATED ENERGY CONSUMPTION - COOLING

45.9 MJ/m² pa

TOTAL SIMULATED ENERGY CONSUMPTION

83.7 m²

FLOOR AREA - CONDITIONED

4.5 m²

FLOOR AREA - UNCONDITIONED

88.2 m²

FLOOR AREA - TOTAL

City West Housing Pty Ltd

ISSUED TO

Unit G04 Wilson Street

ADDRESS

Site Lot Lot 3 over Lot 50

North Eveleigh

NSW

2015

Katie Fallowfield

ASSESSOR NAME

20940

ASSESSOR NUMBER

Built Ecology

COMPANY

ASSESSOR SIGNATURE

Issued by a BUILDING THERMAL PERFORMANCE ASSESSOR accredited by the Association of Building Sustainability Assessors to provide NatHERS house energy ratings.



NatHERS Rated 7.5 STARS*

*www.nathers.gov.au



BUILDING ENERGY EFFICIENCY CERTIFICATE

City West Housing Pty Ltd

ISSUED TO

Unit G05 Wilson Street

ADDRESS

Site Lot Lot 3 over Lot 50

North Eveleigh

NSW

2015

1005141955

CERTIFICATION NUMBER

20/03/2013

DATE

56

CLIMATE ZONE

BERS Professional - v4.2.110811 (BERS Professional)

SOFTWARE

14.2 MJ/m² pa

SIMULATED ENERGY CONSUMPTION - HEATING

12.9 MJ/m² pa

SIMULATED ENERGY CONSUMPTION - COOLING

27.1 MJ/m² pa

TOTAL SIMULATED ENERGY CONSUMPTION

64.9 m²

FLOOR AREA - CONDITIONED

6.4 m²

FLOOR AREA - UNCONDITIONED

71.3 m²

FLOOR AREA - TOTAL

Katie Fallowfield

ASSESSOR NAME

20940

ASSESSOR NUMBER

Built Ecology

COMPANY

ASSESSOR SIGNATURE

Issued by a BUILDING THERMAL PERFORMANCE ASSESSOR accredited by the Association of Building Sustainability Assessors to provide NatHERS house energy ratings.



NatHERS Rated 7.5 STARS*

*www.nathers.gov.au



BUILDING ENERGY EFFICIENCY CERTIFICATE

1005141963

CERTIFICATION NUMBER

20/03/2013

DATE

56

CLIMATE ZONE

BERS Professional - v4.2.110811 (BERS Professional)

SOFTWARE

8.8 MJ/m² pa

SIMULATED ENERGY CONSUMPTION - HEATING

17.4 MJ/m² pa

SIMULATED ENERGY CONSUMPTION - COOLING

26.2 MJ/m² pa

TOTAL SIMULATED ENERGY CONSUMPTION

91.5 m²

FLOOR AREA - CONDITIONED

9.4 m²

FLOOR AREA - UNCONDITIONED

100.9 m²

FLOOR AREA - TOTAL

City West Housing Pty Ltd

ISSUED TO

Unit G06 Wilson Street

ADDRESS

Site Lot Lot 3 over Lot 50

North Eveleigh

NSW

2015

Katie Fallowfield

ASSESSOR NAME

20940

ASSESSOR NUMBER

Built Ecology

COMPANY

ASSESSOR SIGNATURE

Issued by a BUILDING THERMAL PERFORMANCE ASSESSOR accredited by the Association of Building Sustainability Assessors to provide NatHERS house energy ratings.



NatHERS Rated 5.0 STARS*

*www.nathers.gov.au



BUILDING ENERGY EFFICIENCY CERTIFICATE

1005141971
 CERTIFICATION NUMBER

20/03/2013
 DATE

56
 CLIMATE ZONE

BERS Professional - v4.2.110811 (BERS Professional)
 SOFTWARE

22.1 MJ/m² pa
 SIMULATED ENERGY CONSUMPTION - HEATING

41.6 MJ/m² pa
 SIMULATED ENERGY CONSUMPTION - COOLING

63.7 MJ/m² pa
 TOTAL SIMULATED ENERGY CONSUMPTION

66.0 m²
 FLOOR AREA - CONDITIONED

6.8 m²
 FLOOR AREA - UNCONDITIONED

72.8 m²
 FLOOR AREA - TOTAL

City West Housing Pty Ltd
 ISSUED TO

Unit 101 Wilson Street
 ADDRESS

Site Lot Lot 3 over Lot 50

North Eveleigh

NSW

2015

Katie Fallowfield
 ASSESSOR NAME

20940
 ASSESSOR NUMBER

Built Ecology
 COMPANY

ASSESSOR SIGNATURE

Issued by a BUILDING THERMAL PERFORMANCE ASSESSOR accredited by the Association of Building Sustainability Assessors to provide NatHERS house energy ratings.



NatHERS Rated 5.0 STARS*

*www.nathers.gov.au



BUILDING ENERGY EFFICIENCY CERTIFICATE

1005141997

CERTIFICATION NUMBER

20/03/2013

DATE

56

CLIMATE ZONE

BERS Professional - v4.2.110811 (BERS Professional)

SOFTWARE

12.2 MJ/m² pa

SIMULATED ENERGY CONSUMPTION - HEATING

46.6 MJ/m² pa

SIMULATED ENERGY CONSUMPTION - COOLING

58.8 MJ/m² pa

TOTAL SIMULATED ENERGY CONSUMPTION

77.3 m²

FLOOR AREA - CONDITIONED

4.8 m²

FLOOR AREA - UNCONDITIONED

82.1 m²

FLOOR AREA - TOTAL

City West Housing Pty Ltd

ISSUED TO

Unit 102 Wilson Street

ADDRESS

Site Lot Lot 3 over Lot 50

North Eveleigh

NSW

2015

Katie Fallowfield

ASSESSOR NAME

20940

ASSESSOR NUMBER

Built Ecology

COMPANY

ASSESSOR SIGNATURE

Issued by a BUILDING THERMAL PERFORMANCE ASSESSOR accredited by the Association of Building Sustainability Assessors to provide NatHERS house energy ratings.



NatHERS Rated 7.5 STARS*

*www.nathers.gov.au



BUILDING ENERGY EFFICIENCY CERTIFICATE

1005142011
 CERTIFICATION NUMBER

20/03/2013
 DATE

56
 CLIMATE ZONE

BERS Professional - v4.2.110811 (BERS Professional)
 SOFTWARE

19.1 MJ/m² pa
 SIMULATED ENERGY CONSUMPTION - HEATING

11.6 MJ/m² pa
 SIMULATED ENERGY CONSUMPTION - COOLING

30.7 MJ/m² pa
 TOTAL SIMULATED ENERGY CONSUMPTION

64.9 m²
 FLOOR AREA - CONDITIONED

6.4 m²
 FLOOR AREA - UNCONDITIONED

71.3 m²
 FLOOR AREA - TOTAL

City West Housing Pty Ltd
 ISSUED TO

Unit 103 Wilson Street
 ADDRESS

Site Lot Lot 3 over Lot 50

North Eveleigh

NSW

2015

Katie Fallowfield
 ASSESSOR NAME

20940
 ASSESSOR NUMBER

Built Ecology
 COMPANY

ASSESSOR SIGNATURE

Issued by a BUILDING THERMAL PERFORMANCE ASSESSOR accredited by the Association of Building Sustainability Assessors to provide NatHERS house energy ratings.



NatHERS Rated 6.0 STARS*

*www.nathers.gov.au



BUILDING ENERGY EFFICIENCY CERTIFICATE

1005142029
 CERTIFICATION NUMBER

20/03/2013
 DATE

56
 CLIMATE ZONE

BERS Professional - v4.2.110811 (BERS Professional)
 SOFTWARE

19.6 MJ/m² pa
 SIMULATED ENERGY CONSUMPTION - HEATING

30.1 MJ/m² pa
 SIMULATED ENERGY CONSUMPTION - COOLING

49.7 MJ/m² pa
 TOTAL SIMULATED ENERGY CONSUMPTION

42.8 m²
 FLOOR AREA - CONDITIONED

6.4 m²
 FLOOR AREA - UNCONDITIONED

49.2 m²
 FLOOR AREA - TOTAL

City West Housing Pty Ltd
 ISSUED TO

Unit 104 Wilson Street
 ADDRESS

Site Lot Lot 3 over Lot 50

North Eveleigh

NSW

2015

Katie Fallowfield
 ASSESSOR NAME

20940
 ASSESSOR NUMBER

Built Ecology
 COMPANY

ASSESSOR SIGNATURE

Issued by a BUILDING THERMAL PERFORMANCE ASSESSOR accredited by the Association of Building Sustainability Assessors to provide NatHERS house energy ratings.



NatHERS Rated 7.0 STARS*

*www.nathers.gov.au



BUILDING ENERGY EFFICIENCY CERTIFICATE

1005142037
 CERTIFICATION NUMBER

20/03/2013
 DATE

56
 CLIMATE ZONE

BERS Professional - v4.2.110811 (BERS Professional)
 SOFTWARE

10.8 MJ/m² pa
 SIMULATED ENERGY CONSUMPTION - HEATING

27.3 MJ/m² pa
 SIMULATED ENERGY CONSUMPTION - COOLING

38.1 MJ/m² pa
 TOTAL SIMULATED ENERGY CONSUMPTION

42.8 m²
 FLOOR AREA - CONDITIONED

5.5 m²
 FLOOR AREA - UNCONDITIONED

48.3 m²
 FLOOR AREA - TOTAL

City West Housing Pty Ltd
 ISSUED TO

Unit 105 Wilson Street
 ADDRESS

Site Lot Lot 3 over Lot 50

North Eveleigh

NSW

2015

Katie Fallowfield
 ASSESSOR NAME

20940
 ASSESSOR NUMBER

Built Ecology
 COMPANY

ASSESSOR SIGNATURE

Issued by a BUILDING THERMAL PERFORMANCE ASSESSOR accredited by the Association of Building Sustainability Assessors to provide NatHERS house energy ratings.



NatHERS Rated 5.5 STARS*

*www.nathers.gov.au



BUILDING ENERGY EFFICIENCY CERTIFICATE

1005142045

CERTIFICATION NUMBER

20/03/2013

DATE

56

CLIMATE ZONE

BERS Professional - v4.2.110811 (BERS Professional)

SOFTWARE

27.0 MJ/m² pa

SIMULATED ENERGY CONSUMPTION - HEATING

25.7 MJ/m² pa

SIMULATED ENERGY CONSUMPTION - COOLING

52.7 MJ/m² pa

TOTAL SIMULATED ENERGY CONSUMPTION

40.8 m²

FLOOR AREA - CONDITIONED

8.1 m²

FLOOR AREA - UNCONDITIONED

48.9 m²

FLOOR AREA - TOTAL

City West Housing Pty Ltd

ISSUED TO

Unit 106 Wilson Street

ADDRESS

Site Lot Lot 3 over Lot 50

North Eveleigh

NSW

2015

Katie Fallowfield

ASSESSOR NAME

20940

ASSESSOR NUMBER

Built Ecology

COMPANY

ASSESSOR SIGNATURE

Issued by a BUILDING THERMAL PERFORMANCE ASSESSOR accredited by the Association of Building Sustainability Assessors to provide NatHERS house energy ratings.



NatHERS Rated 5.5 STARS*

*www.nathers.gov.au



BUILDING ENERGY EFFICIENCY CERTIFICATE

1005142052
 CERTIFICATION NUMBER

20/03/2013
 DATE

56
 CLIMATE ZONE

BERS Professional - v4.2.110811 (BERS Professional)
 SOFTWARE

31.1 MJ/m² pa
 SIMULATED ENERGY CONSUMPTION - HEATING

21.3 MJ/m² pa
 SIMULATED ENERGY CONSUMPTION - COOLING

52.4 MJ/m² pa
 TOTAL SIMULATED ENERGY CONSUMPTION

40.8 m²
 FLOOR AREA - CONDITIONED

8.1 m²
 FLOOR AREA - UNCONDITIONED

48.9 m²
 FLOOR AREA - TOTAL

City West Housing Pty Ltd
 ISSUED TO

Unit 107 Wilson Street
 ADDRESS

Site Lot Lot 3 over Lot 50

North Eveleigh

NSW

2015

Katie Fallowfield
 ASSESSOR NAME

20940
 ASSESSOR NUMBER

Built Ecology
 COMPANY

ASSESSOR SIGNATURE

Issued by a BUILDING THERMAL PERFORMANCE ASSESSOR accredited by the Association of Building Sustainability Assessors to provide NatHERS house energy ratings.



NatHERS Rated 5.5 STARS*

*www.nathers.gov.au



BUILDING ENERGY EFFICIENCY CERTIFICATE

1005142060
 CERTIFICATION NUMBER

20/03/2013
 DATE

56
 CLIMATE ZONE

BERS Professional - v4.2.110811 (BERS Professional)
 SOFTWARE

27.0 MJ/m² pa
 SIMULATED ENERGY CONSUMPTION - HEATING

25.7 MJ/m² pa
 SIMULATED ENERGY CONSUMPTION - COOLING

52.7 MJ/m² pa
 TOTAL SIMULATED ENERGY CONSUMPTION

40.8 m²
 FLOOR AREA - CONDITIONED

8.1 m²
 FLOOR AREA - UNCONDITIONED

48.9 m²
 FLOOR AREA - TOTAL

City West Housing Pty Ltd
 ISSUED TO

Unit 108 Wilson Street
 ADDRESS

Site Lot Lot 3 over Lot 50

North Eveleigh

NSW

2015

Katie Fallowfield
 ASSESSOR NAME

20940
 ASSESSOR NUMBER

Built Ecology
 COMPANY

ASSESSOR SIGNATURE

Issued by a BUILDING THERMAL PERFORMANCE ASSESSOR accredited by the Association of Building Sustainability Assessors to provide NatHERS house energy ratings.



NatHERS Rated 5.5 STARS*

*www.nathers.gov.au



BUILDING ENERGY EFFICIENCY CERTIFICATE

1005142078

CERTIFICATION NUMBER

20/03/2013

DATE

56

CLIMATE ZONE

BERS Professional - v4.2.110811 (BERS Professional)

SOFTWARE

31.1 MJ/m² pa

SIMULATED ENERGY CONSUMPTION - HEATING

21.3 MJ/m² pa

SIMULATED ENERGY CONSUMPTION - COOLING

52.4 MJ/m² pa

TOTAL SIMULATED ENERGY CONSUMPTION

40.8 m²

FLOOR AREA - CONDITIONED

8.1 m²

FLOOR AREA - UNCONDITIONED

48.9 m²

FLOOR AREA - TOTAL

City West Housing Pty Ltd

ISSUED TO

Unit 109 Wilson Street

ADDRESS

Site Lot Lot 3 over Lot 50

North Eveleigh

NSW

2015

Katie Fallowfield

ASSESSOR NAME

20940

ASSESSOR NUMBER

Built Ecology

COMPANY

ASSESSOR SIGNATURE

Issued by a BUILDING THERMAL PERFORMANCE ASSESSOR accredited by the Association of Building Sustainability Assessors to provide NatHERS house energy ratings.



NatHERS Rated 5.5 STARS*

*www.nathers.gov.au



BUILDING ENERGY EFFICIENCY CERTIFICATE

1005142086
 CERTIFICATION NUMBER

20/03/2013
 DATE

56
 CLIMATE ZONE

BERS Professional - v4.2.110811 (BERS Professional)
 SOFTWARE

27.0 MJ/m² pa
 SIMULATED ENERGY CONSUMPTION - HEATING

25.7 MJ/m² pa
 SIMULATED ENERGY CONSUMPTION - COOLING

52.7 MJ/m² pa
 TOTAL SIMULATED ENERGY CONSUMPTION

40.8 m²
 FLOOR AREA - CONDITIONED

8.1 m²
 FLOOR AREA - UNCONDITIONED

48.9 m²
 FLOOR AREA - TOTAL

City West Housing Pty Ltd
 ISSUED TO

Unit 110 Wilson Street
 ADDRESS

Site Lot Lot 3 over Lot 50

North Eveleigh

NSW

2015

Katie Fallowfield
 ASSESSOR NAME

20940
 ASSESSOR NUMBER

Built Ecology
 COMPANY

ASSESSOR SIGNATURE

Issued by a BUILDING THERMAL PERFORMANCE ASSESSOR accredited by the Association of Building Sustainability Assessors to provide NatHERS house energy ratings.



NatHERS Rated 4.5 STARS*

*www.nathers.gov.au



BUILDING ENERGY EFFICIENCY CERTIFICATE

1005142094

CERTIFICATION NUMBER

20/03/2013

DATE

56

CLIMATE ZONE

BERS Professional - v4.2.110811 (BERS Professional)

SOFTWARE

43.8 MJ/m² pa

SIMULATED ENERGY CONSUMPTION - HEATING

23.0 MJ/m² pa

SIMULATED ENERGY CONSUMPTION - COOLING

66.8 MJ/m² pa

TOTAL SIMULATED ENERGY CONSUMPTION

40.8 m²

FLOOR AREA - CONDITIONED

8.1 m²

FLOOR AREA - UNCONDITIONED

48.9 m²

FLOOR AREA - TOTAL

City West Housing Pty Ltd

ISSUED TO

Unit 111 Wilson Street

ADDRESS

Site Lot Lot 3 over Lot 50

North Eveleigh

NSW

2015

Katie Fallowfield

ASSESSOR NAME

20940

ASSESSOR NUMBER

Built Ecology

COMPANY

ASSESSOR SIGNATURE

Issued by a BUILDING THERMAL PERFORMANCE ASSESSOR accredited by the Association of Building Sustainability Assessors to provide NatHERS house energy ratings.



NatHERS Rated 7.5 STARS*

*www.nathers.gov.au



BUILDING ENERGY EFFICIENCY CERTIFICATE

City West Housing Pty Ltd

ISSUED TO

Unit 112 Wilson Street

ADDRESS

Site Lot Lot 3 over Lot 50

North Eveleigh

NSW

2015

1005142102

CERTIFICATION NUMBER

20/03/2013

DATE

56

CLIMATE ZONE

BERS Professional - v4.2.110811 (BERS Professional)

SOFTWARE

18.0 MJ/m² pa

SIMULATED ENERGY CONSUMPTION - HEATING

10.5 MJ/m² pa

SIMULATED ENERGY CONSUMPTION - COOLING

28.5 MJ/m² pa

TOTAL SIMULATED ENERGY CONSUMPTION

64.9 m²

FLOOR AREA - CONDITIONED

6.4 m²

FLOOR AREA - UNCONDITIONED

71.3 m²

FLOOR AREA - TOTAL

Katie Fallowfield

ASSESSOR NAME

20940

ASSESSOR NUMBER

Built Ecology

COMPANY

ASSESSOR SIGNATURE

Issued by a BUILDING THERMAL PERFORMANCE ASSESSOR accredited by the Association of Building Sustainability Assessors to provide NatHERS house energy ratings.



NatHERS Rated 7.5 STARS*

*www.nathers.gov.au



BUILDING ENERGY EFFICIENCY CERTIFICATE

City West Housing Pty Ltd

ISSUED TO

Unit 113 Wilson Street

ADDRESS

Site Lot Lot 3 over Lot 50

North Eveleigh

NSW

2015

1005142110

CERTIFICATION NUMBER

20/03/2013

DATE

56

CLIMATE ZONE

BERS Professional - v4.2.110811 (BERS Professional)

SOFTWARE

11.9 MJ/m² pa

SIMULATED ENERGY CONSUMPTION - HEATING

16.2 MJ/m² pa

SIMULATED ENERGY CONSUMPTION - COOLING

28.1 MJ/m² pa

TOTAL SIMULATED ENERGY CONSUMPTION

74.6 m²

FLOOR AREA - CONDITIONED

6.2 m²

FLOOR AREA - UNCONDITIONED

80.8 m²

FLOOR AREA - TOTAL

Katie Fallowfield

ASSESSOR NAME

20940

ASSESSOR NUMBER

Built Ecology

COMPANY

ASSESSOR SIGNATURE

Issued by a BUILDING THERMAL PERFORMANCE ASSESSOR accredited by the Association of Building Sustainability Assessors to provide NatHERS house energy ratings.



NatHERS Rated 6.0 STARS*

*www.nathers.gov.au



BUILDING ENERGY EFFICIENCY CERTIFICATE

1005142144
 CERTIFICATION NUMBER

20/03/2013
 DATE

56
 CLIMATE ZONE

BERS Professional - v4.2.110811 (BERS Professional)
 SOFTWARE

17.0 MJ/m² pa
 SIMULATED ENERGY CONSUMPTION - HEATING

30.4 MJ/m² pa
 SIMULATED ENERGY CONSUMPTION - COOLING

47.4 MJ/m² pa
 TOTAL SIMULATED ENERGY CONSUMPTION

49.6 m²
 FLOOR AREA - CONDITIONED

6.7 m²
 FLOOR AREA - UNCONDITIONED

56.3 m²
 FLOOR AREA - TOTAL

City West Housing Pty Ltd
 ISSUED TO

Unit 114 Wilson Street
 ADDRESS

Site Lot Lot 3 over Lot 50

North Eveleigh

NSW

2015

Katie Fallowfield
 ASSESSOR NAME

20940
 ASSESSOR NUMBER

Built Ecology
 COMPANY

ASSESSOR SIGNATURE

Issued by a BUILDING THERMAL PERFORMANCE ASSESSOR accredited by the Association of Building Sustainability Assessors to provide NatHERS house energy ratings.



NatHERS Rated 5.5 STARS*

*www.nathers.gov.au



BUILDING ENERGY EFFICIENCY CERTIFICATE

1005142151
 CERTIFICATION NUMBER

20/03/2013
 DATE

56
 CLIMATE ZONE

BERS Professional - v4.2.110811 (BERS Professional)
 SOFTWARE

21.2 MJ/m² pa
 SIMULATED ENERGY CONSUMPTION - HEATING

30.9 MJ/m² pa
 SIMULATED ENERGY CONSUMPTION - COOLING

52.1 MJ/m² pa
 TOTAL SIMULATED ENERGY CONSUMPTION

49.6 m²
 FLOOR AREA - CONDITIONED

6.7 m²
 FLOOR AREA - UNCONDITIONED

56.3 m²
 FLOOR AREA - TOTAL

City West Housing Pty Ltd
 ISSUED TO

Unit 115 Wilson Street
 ADDRESS

Site Lot Lot 3 over Lot 50

North Eveleigh

NSW

2015

Katie Fallowfield
 ASSESSOR NAME

20940
 ASSESSOR NUMBER

Built Ecology
 COMPANY

ASSESSOR SIGNATURE

Issued by a BUILDING THERMAL PERFORMANCE ASSESSOR accredited by the Association of Building Sustainability Assessors to provide NatHERS house energy ratings.



NatHERS Rated 4.0 STARS*

*www.nathers.gov.au



BUILDING ENERGY EFFICIENCY CERTIFICATE

1005142169

CERTIFICATION NUMBER

20/03/2013

DATE

56

CLIMATE ZONE

BERS Professional - v4.2.110811 (BERS Professional)

SOFTWARE

46.8 MJ/m² pa

SIMULATED ENERGY CONSUMPTION - HEATING

35.9 MJ/m² pa

SIMULATED ENERGY CONSUMPTION - COOLING

82.7 MJ/m² pa

TOTAL SIMULATED ENERGY CONSUMPTION

46.8 m²

FLOOR AREA - CONDITIONED

4.8 m²

FLOOR AREA - UNCONDITIONED

51.6 m²

FLOOR AREA - TOTAL

City West Housing Pty Ltd

ISSUED TO

Unit 116 Wilson Street

ADDRESS

Site Lot Lot 3 over Lot 50

North Eveleigh

NSW

2015

Katie Fallowfield

ASSESSOR NAME

20940

ASSESSOR NUMBER

Built Ecology

COMPANY

ASSESSOR SIGNATURE

Issued by a BUILDING THERMAL PERFORMANCE ASSESSOR accredited by the Association of Building Sustainability Assessors to provide NatHERS house energy ratings.



NatHERS Rated 5.0 STARS*

*www.nathers.gov.au



BUILDING ENERGY EFFICIENCY CERTIFICATE

1005142185

CERTIFICATION NUMBER

20/03/2013

DATE

56

CLIMATE ZONE

BERS Professional - v4.2.110811 (BERS Professional)

SOFTWARE

22.1 MJ/m² pa

SIMULATED ENERGY CONSUMPTION - HEATING

41.6 MJ/m² pa

SIMULATED ENERGY CONSUMPTION - COOLING

63.7 MJ/m² pa

TOTAL SIMULATED ENERGY CONSUMPTION

66.0 m²

FLOOR AREA - CONDITIONED

6.8 m²

FLOOR AREA - UNCONDITIONED

72.8 m²

FLOOR AREA - TOTAL

City West Housing Pty Ltd

ISSUED TO

Unit 201 Wilson Street

ADDRESS

Site Lot Lot 3 over Lot 50

North Eveleigh

NSW

2015

Katie Fallowfield

ASSESSOR NAME

20940

ASSESSOR NUMBER

Built Ecology

COMPANY

ASSESSOR SIGNATURE

Issued by a BUILDING THERMAL PERFORMANCE ASSESSOR accredited by the Association of Building Sustainability Assessors to provide NatHERS house energy ratings.



NatHERS Rated 5.0 STARS*

*www.nathers.gov.au



BUILDING ENERGY EFFICIENCY CERTIFICATE

1005142201

CERTIFICATION NUMBER

20/03/2013

DATE

56

CLIMATE ZONE

BERS Professional - v4.2.110811 (BERS Professional)

SOFTWARE

12.2 MJ/m² pa

SIMULATED ENERGY CONSUMPTION - HEATING

46.6 MJ/m² pa

SIMULATED ENERGY CONSUMPTION - COOLING

58.8 MJ/m² pa

TOTAL SIMULATED ENERGY CONSUMPTION

77.3 m²

FLOOR AREA - CONDITIONED

4.8 m²

FLOOR AREA - UNCONDITIONED

82.1 m²

FLOOR AREA - TOTAL

City West Housing Pty Ltd

ISSUED TO

Unit 202 Wilson Street

ADDRESS

Site Lot Lot 3 over Lot 50

North Eveleigh

NSW

2015

Katie Fallowfield

ASSESSOR NAME

20940

ASSESSOR NUMBER

Built Ecology

COMPANY

ASSESSOR SIGNATURE

Issued by a BUILDING THERMAL PERFORMANCE ASSESSOR accredited by the Association of Building Sustainability Assessors to provide NatHERS house energy ratings.



NatHERS Rated 7.5 STARS*

*www.nathers.gov.au



BUILDING ENERGY EFFICIENCY CERTIFICATE

1005142219
 CERTIFICATION NUMBER

20/03/2013
 DATE

56
 CLIMATE ZONE

BERS Professional - v4.2.110811 (BERS Professional)
 SOFTWARE

19.1 MJ/m² pa
 SIMULATED ENERGY CONSUMPTION - HEATING

11.6 MJ/m² pa
 SIMULATED ENERGY CONSUMPTION - COOLING

30.7 MJ/m² pa
 TOTAL SIMULATED ENERGY CONSUMPTION

64.9 m²
 FLOOR AREA - CONDITIONED

6.4 m²
 FLOOR AREA - UNCONDITIONED

71.3 m²
 FLOOR AREA - TOTAL

City West Housing Pty Ltd
 ISSUED TO

Unit 203 Wilson Street
 ADDRESS

Site Lot Lot 3 over Lot 50

North Eveleigh

NSW

2015

Katie Fallowfield
 ASSESSOR NAME

20940
 ASSESSOR NUMBER

Built Ecology
 COMPANY

ASSESSOR SIGNATURE

Issued by a BUILDING THERMAL PERFORMANCE ASSESSOR accredited by the Association of Building Sustainability Assessors to provide NatHERS house energy ratings.



NatHERS Rated 6.0 STARS*

*www.nathers.gov.au



BUILDING ENERGY EFFICIENCY CERTIFICATE

City West Housing Pty Ltd

ISSUED TO

Unit 204 Wilson Street

ADDRESS

Site Lot Lot 3 over Lot 50

North Eveleigh

NSW

2015

1005142227

CERTIFICATION NUMBER

20/03/2013

DATE

56

CLIMATE ZONE

BERS Professional - v4.2.110811 (BERS Professional)

SOFTWARE

19.6 MJ/m² pa

SIMULATED ENERGY CONSUMPTION - HEATING

30.1 MJ/m² pa

SIMULATED ENERGY CONSUMPTION - COOLING

49.7 MJ/m² pa

TOTAL SIMULATED ENERGY CONSUMPTION

42.8 m²

FLOOR AREA - CONDITIONED

6.4 m²

FLOOR AREA - UNCONDITIONED

49.2 m²

FLOOR AREA - TOTAL

Katie Fallowfield

ASSESSOR NAME

20940

ASSESSOR NUMBER

Built Ecology

COMPANY

ASSESSOR SIGNATURE

Issued by a BUILDING THERMAL PERFORMANCE ASSESSOR accredited by the Association of Building Sustainability Assessors to provide NatHERS house energy ratings.



NatHERS Rated 7.0 STARS*

*www.nathers.gov.au



BUILDING ENERGY EFFICIENCY CERTIFICATE

1005142235
 CERTIFICATION NUMBER

20/03/2013
 DATE

56
 CLIMATE ZONE

BERS Professional - v4.2.110811 (BERS Professional)
 SOFTWARE

10.8 MJ/m² pa
 SIMULATED ENERGY CONSUMPTION - HEATING

27.3 MJ/m² pa
 SIMULATED ENERGY CONSUMPTION - COOLING

38.1 MJ/m² pa
 TOTAL SIMULATED ENERGY CONSUMPTION

42.8 m²
 FLOOR AREA - CONDITIONED

5.5 m²
 FLOOR AREA - UNCONDITIONED

48.3 m²
 FLOOR AREA - TOTAL

City West Housing Pty Ltd
 ISSUED TO

Unit 205 Wilson Street
 ADDRESS

Site Lot Lot 3 over Lot 50

North Eveleigh

NSW

2015

Katie Fallowfield
 ASSESSOR NAME

20940
 ASSESSOR NUMBER

Built Ecology
 COMPANY

ASSESSOR SIGNATURE

Issued by a BUILDING THERMAL PERFORMANCE ASSESSOR accredited by the Association of Building Sustainability Assessors to provide NatHERS house energy ratings.



NatHERS Rated 5.5 STARS*

*www.nathers.gov.au



BUILDING ENERGY EFFICIENCY CERTIFICATE

1005142243

CERTIFICATION NUMBER

20/03/2013

DATE

56

CLIMATE ZONE

BERS Professional - v4.2.110811 (BERS Professional)

SOFTWARE

27.0 MJ/m² pa

SIMULATED ENERGY CONSUMPTION - HEATING

25.7 MJ/m² pa

SIMULATED ENERGY CONSUMPTION - COOLING

52.7 MJ/m² pa

TOTAL SIMULATED ENERGY CONSUMPTION

40.8 m²

FLOOR AREA - CONDITIONED

8.1 m²

FLOOR AREA - UNCONDITIONED

48.9 m²

FLOOR AREA - TOTAL

City West Housing Pty Ltd

ISSUED TO

Unit 206 Wilson Street

ADDRESS

Site Lot Lot 3 over Lot 50

North Eveleigh

NSW

2015

Katie Fallowfield

ASSESSOR NAME

20940

ASSESSOR NUMBER

Built Ecology

COMPANY

ASSESSOR SIGNATURE

Issued by a BUILDING THERMAL PERFORMANCE ASSESSOR accredited by the Association of Building Sustainability Assessors to provide NatHERS house energy ratings.



NatHERS Rated 5.5 STARS*

*www.nathers.gov.au



BUILDING ENERGY EFFICIENCY CERTIFICATE

1005142250
 CERTIFICATION NUMBER

20/03/2013
 DATE

56
 CLIMATE ZONE

BERS Professional - v4.2.110811 (BERS Professional)
 SOFTWARE

31.1 MJ/m² pa
 SIMULATED ENERGY CONSUMPTION - HEATING

21.3 MJ/m² pa
 SIMULATED ENERGY CONSUMPTION - COOLING

52.4 MJ/m² pa
 TOTAL SIMULATED ENERGY CONSUMPTION

40.8 m²
 FLOOR AREA - CONDITIONED

8.1 m²
 FLOOR AREA - UNCONDITIONED

48.9 m²
 FLOOR AREA - TOTAL

City West Housing Pty Ltd
 ISSUED TO

Unit 207 Wilson Street
 ADDRESS

Site Lot Lot 3 over Lot 50

North Eveleigh

NSW

2015

Katie Fallowfield
 ASSESSOR NAME

20940
 ASSESSOR NUMBER

Built Ecology
 COMPANY

ASSESSOR SIGNATURE

Issued by a BUILDING THERMAL PERFORMANCE ASSESSOR accredited by the Association of Building Sustainability Assessors to provide NatHERS house energy ratings.



NatHERS Rated 5.5 STARS*

*www.nathers.gov.au



BUILDING ENERGY EFFICIENCY CERTIFICATE

1005142268
 CERTIFICATION NUMBER

20/03/2013
 DATE

56
 CLIMATE ZONE

BERS Professional - v4.2.110811 (BERS Professional)
 SOFTWARE

27.0 MJ/m² pa
 SIMULATED ENERGY CONSUMPTION - HEATING

25.7 MJ/m² pa
 SIMULATED ENERGY CONSUMPTION - COOLING

52.7 MJ/m² pa
 TOTAL SIMULATED ENERGY CONSUMPTION

40.8 m²
 FLOOR AREA - CONDITIONED

8.1 m²
 FLOOR AREA - UNCONDITIONED

48.9 m²
 FLOOR AREA - TOTAL

City West Housing Pty Ltd
 ISSUED TO

Unit 208 Wilson Street
 ADDRESS

Site Lot Lot 3 over Lot 50

North Eveleigh

NSW

2015

Katie Fallowfield
 ASSESSOR NAME

20940
 ASSESSOR NUMBER

Built Ecology
 COMPANY

ASSESSOR SIGNATURE

Issued by a BUILDING THERMAL PERFORMANCE ASSESSOR accredited by the Association of Building Sustainability Assessors to provide NatHERS house energy ratings.



NatHERS Rated 5.5 STARS*

*www.nathers.gov.au



BUILDING ENERGY EFFICIENCY CERTIFICATE

1005142292

CERTIFICATION NUMBER

20/03/2013

DATE

56

CLIMATE ZONE

BERS Professional - v4.2.110811 (BERS Professional)

SOFTWARE

31.1 MJ/m² pa

SIMULATED ENERGY CONSUMPTION - HEATING

21.3 MJ/m² pa

SIMULATED ENERGY CONSUMPTION - COOLING

52.4 MJ/m² pa

TOTAL SIMULATED ENERGY CONSUMPTION

40.8 m²

FLOOR AREA - CONDITIONED

8.1 m²

FLOOR AREA - UNCONDITIONED

48.9 m²

FLOOR AREA - TOTAL

City West Housing Pty Ltd

ISSUED TO

Unit 209 Wilson Street

ADDRESS

Site Lot Lot 3 over Lot 50

North Eveleigh

NSW

2015

Katie Fallowfield

ASSESSOR NAME

20940

ASSESSOR NUMBER

Built Ecology

COMPANY

ASSESSOR SIGNATURE

Issued by a BUILDING THERMAL PERFORMANCE ASSESSOR accredited by the Association of Building Sustainability Assessors to provide NatHERS house energy ratings.



NatHERS Rated 5.5 STARS*

*www.nathers.gov.au



BUILDING ENERGY EFFICIENCY CERTIFICATE

1005142300
 CERTIFICATION NUMBER

20/03/2013
 DATE

56
 CLIMATE ZONE

BERS Professional - v4.2.110811 (BERS Professional)
 SOFTWARE

27.0 MJ/m² pa
 SIMULATED ENERGY CONSUMPTION - HEATING

25.7 MJ/m² pa
 SIMULATED ENERGY CONSUMPTION - COOLING

52.7 MJ/m² pa
 TOTAL SIMULATED ENERGY CONSUMPTION

40.8 m²
 FLOOR AREA - CONDITIONED

8.1 m²
 FLOOR AREA - UNCONDITIONED

48.9 m²
 FLOOR AREA - TOTAL

City West Housing Pty Ltd
 ISSUED TO

Unit 210 Wilson Street
 ADDRESS

Site Lot Lot 3 over Lot 50

North Eveleigh

NSW

2015

Katie Fallowfield
 ASSESSOR NAME

20940
 ASSESSOR NUMBER

Built Ecology
 COMPANY

ASSESSOR SIGNATURE

Issued by a BUILDING THERMAL PERFORMANCE ASSESSOR accredited by the Association of Building Sustainability Assessors to provide NatHERS house energy ratings.



NatHERS Rated 4.5 STARS*

*www.nathers.gov.au



BUILDING ENERGY EFFICIENCY CERTIFICATE

City West Housing Pty Ltd

ISSUED TO

Unit 211 Wilson Street

ADDRESS

Site Lot Lot 3 over Lot 50

North Eveleigh

NSW

2015

1005142318

CERTIFICATION NUMBER

20/03/2013

DATE

56

CLIMATE ZONE

BERS Professional - v4.2.110811 (BERS Professional)

SOFTWARE

43.8 MJ/m² pa

SIMULATED ENERGY CONSUMPTION - HEATING

23.0 MJ/m² pa

SIMULATED ENERGY CONSUMPTION - COOLING

66.8 MJ/m² pa

TOTAL SIMULATED ENERGY CONSUMPTION

40.8 m²

FLOOR AREA - CONDITIONED

8.1 m²

FLOOR AREA - UNCONDITIONED

48.9 m²

FLOOR AREA - TOTAL

Katie Fallowfield

ASSESSOR NAME

20940

ASSESSOR NUMBER

Built Ecology

COMPANY

ASSESSOR SIGNATURE

Issued by a BUILDING THERMAL PERFORMANCE ASSESSOR accredited by the Association of Building Sustainability Assessors to provide NatHERS house energy ratings.



NatHERS Rated 7.5 STARS*

*www.nathers.gov.au



BUILDING ENERGY EFFICIENCY CERTIFICATE

1005142326

CERTIFICATION NUMBER

20/03/2013

DATE

56

CLIMATE ZONE

BERS Professional - v4.2.110811 (BERS Professional)

SOFTWARE

18.0 MJ/m² pa

SIMULATED ENERGY CONSUMPTION - HEATING

10.5 MJ/m² pa

SIMULATED ENERGY CONSUMPTION - COOLING

28.5 MJ/m² pa

TOTAL SIMULATED ENERGY CONSUMPTION

64.9 m²

FLOOR AREA - CONDITIONED

6.4 m²

FLOOR AREA - UNCONDITIONED

71.3 m²

FLOOR AREA - TOTAL

City West Housing Pty Ltd

ISSUED TO

Unit 212 Wilson Street

ADDRESS

Site Lot Lot 3 over Lot 50

North Eveleigh

NSW

2015

Katie Fallowfield

ASSESSOR NAME

20940

ASSESSOR NUMBER

Built Ecology

COMPANY

ASSESSOR SIGNATURE

Issued by a BUILDING THERMAL PERFORMANCE ASSESSOR accredited by the Association of Building Sustainability Assessors to provide NatHERS house energy ratings.



NatHERS Rated 7.5 STARS*

*www.nathers.gov.au



BUILDING ENERGY EFFICIENCY CERTIFICATE

City West Housing Pty Ltd

ISSUED TO

Unit 213 Wilson Street

ADDRESS

Site Lot Lot 3 over Lot 50

North Eveleigh

NSW

2015

1005142334

CERTIFICATION NUMBER

20/03/2013

DATE

56

CLIMATE ZONE

BERS Professional - v4.2.110811 (BERS Professional)

SOFTWARE

11.9 MJ/m² pa

SIMULATED ENERGY CONSUMPTION - HEATING

16.2 MJ/m² pa

SIMULATED ENERGY CONSUMPTION - COOLING

28.1 MJ/m² pa

TOTAL SIMULATED ENERGY CONSUMPTION

74.6 m²

FLOOR AREA - CONDITIONED

6.2 m²

FLOOR AREA - UNCONDITIONED

80.8 m²

FLOOR AREA - TOTAL

Katie Fallowfield

ASSESSOR NAME

20940

ASSESSOR NUMBER

Built Ecology

COMPANY

ASSESSOR SIGNATURE

Issued by a BUILDING THERMAL PERFORMANCE ASSESSOR accredited by the Association of Building Sustainability Assessors to provide NatHERS house energy ratings.



NatHERS Rated 6.0 STARS*

*www.nathers.gov.au



BUILDING ENERGY EFFICIENCY CERTIFICATE

1005142342
 CERTIFICATION NUMBER

20/03/2013
 DATE

56
 CLIMATE ZONE

BERS Professional - v4.2.110811 (BERS Professional)
 SOFTWARE

17.0 MJ/m² pa
 SIMULATED ENERGY CONSUMPTION - HEATING

30.4 MJ/m² pa
 SIMULATED ENERGY CONSUMPTION - COOLING

47.4 MJ/m² pa
 TOTAL SIMULATED ENERGY CONSUMPTION

49.6 m²
 FLOOR AREA - CONDITIONED

6.7 m²
 FLOOR AREA - UNCONDITIONED

56.3 m²
 FLOOR AREA - TOTAL

City West Housing Pty Ltd
 ISSUED TO

Unit 214 Wilson Street
 ADDRESS

Site Lot Lot 3 over Lot 50

North Eveleigh

NSW

2015

Katie Fallowfield
 ASSESSOR NAME

20940
 ASSESSOR NUMBER

Built Ecology
 COMPANY

ASSESSOR SIGNATURE

Issued by a BUILDING THERMAL PERFORMANCE ASSESSOR accredited by the Association of Building Sustainability Assessors to provide NatHERS house energy ratings.



NatHERS Rated 5.5 STARS*

*www.nathers.gov.au



BUILDING ENERGY EFFICIENCY CERTIFICATE

City West Housing Pty Ltd

ISSUED TO

Unit 215 Wilson Street

ADDRESS

Site Lot Lot 3 over Lot 50

North Eveleigh

NSW

2015

1005142359

CERTIFICATION NUMBER

20/03/2013

DATE

56

CLIMATE ZONE

BERS Professional - v4.2.110811 (BERS Professional)

SOFTWARE

21.2 MJ/m² pa

SIMULATED ENERGY CONSUMPTION - HEATING

30.9 MJ/m² pa

SIMULATED ENERGY CONSUMPTION - COOLING

52.1 MJ/m² pa

TOTAL SIMULATED ENERGY CONSUMPTION

49.6 m²

FLOOR AREA - CONDITIONED

6.7 m²

FLOOR AREA - UNCONDITIONED

56.3 m²

FLOOR AREA - TOTAL

Katie Fallowfield

ASSESSOR NAME

20940

ASSESSOR NUMBER

Built Ecology

COMPANY

ASSESSOR SIGNATURE

Issued by a BUILDING THERMAL PERFORMANCE ASSESSOR accredited by the Association of Building Sustainability Assessors to provide NatHERS house energy ratings.



NatHERS Rated 4.0 STARS*

*www.nathers.gov.au



BUILDING ENERGY EFFICIENCY CERTIFICATE

1005142367

CERTIFICATION NUMBER

20/03/2013

DATE

56

CLIMATE ZONE

BERS Professional - v4.2.110811 (BERS Professional)

SOFTWARE

46.8 MJ/m² pa

SIMULATED ENERGY CONSUMPTION - HEATING

35.9 MJ/m² pa

SIMULATED ENERGY CONSUMPTION - COOLING

82.7 MJ/m² pa

TOTAL SIMULATED ENERGY CONSUMPTION

46.8 m²

FLOOR AREA - CONDITIONED

4.8 m²

FLOOR AREA - UNCONDITIONED

51.6 m²

FLOOR AREA - TOTAL

City West Housing Pty Ltd

ISSUED TO

Unit 216 Wilson Street

ADDRESS

Site Lot Lot 3 over Lot 50

North Eveleigh

NSW

2015

Katie Fallowfield

ASSESSOR NAME

20940

ASSESSOR NUMBER

Built Ecology

COMPANY

ASSESSOR SIGNATURE

Issued by a BUILDING THERMAL PERFORMANCE ASSESSOR accredited by the Association of Building Sustainability Assessors to provide NatHERS house energy ratings.



NatHERS Rated 5.0 STARS*

*www.nathers.gov.au



BUILDING ENERGY EFFICIENCY CERTIFICATE

1005142375
 CERTIFICATION NUMBER

20/03/2013
 DATE

56
 CLIMATE ZONE

BERS Professional - v4.2.110811 (BERS Professional)
 SOFTWARE

22.1 MJ/m² pa
 SIMULATED ENERGY CONSUMPTION - HEATING

41.6 MJ/m² pa
 SIMULATED ENERGY CONSUMPTION - COOLING

63.7 MJ/m² pa
 TOTAL SIMULATED ENERGY CONSUMPTION

66.0 m²
 FLOOR AREA - CONDITIONED

6.8 m²
 FLOOR AREA - UNCONDITIONED

72.8 m²
 FLOOR AREA - TOTAL

City West Housing Pty Ltd
 ISSUED TO

Unit 301 Wilson Street
 ADDRESS

Site Lot Lot 3 over Lot 50

North Eveleigh

NSW

2015

Katie Fallowfield
 ASSESSOR NAME

20940
 ASSESSOR NUMBER

Built Ecology
 COMPANY

ASSESSOR SIGNATURE

Issued by a BUILDING THERMAL PERFORMANCE ASSESSOR accredited by the Association of Building Sustainability Assessors to provide NatHERS house energy ratings.



NatHERS Rated 5.0 STARS*

*www.nathers.gov.au



BUILDING ENERGY EFFICIENCY CERTIFICATE

1005142383

CERTIFICATION NUMBER

20/03/2013

DATE

56

CLIMATE ZONE

BERS Professional - v4.2.110811 (BERS Professional)

SOFTWARE

12.2 MJ/m² pa

SIMULATED ENERGY CONSUMPTION - HEATING

46.6 MJ/m² pa

SIMULATED ENERGY CONSUMPTION - COOLING

58.8 MJ/m² pa

TOTAL SIMULATED ENERGY CONSUMPTION

77.3 m²

FLOOR AREA - CONDITIONED

4.8 m²

FLOOR AREA - UNCONDITIONED

82.1 m²

FLOOR AREA - TOTAL

City West Housing Pty Ltd

ISSUED TO

Unit 302 Wilson Street

ADDRESS

Site Lot Lot 3 over Lot 50

North Eveleigh

NSW

2015

Katie Fallowfield

ASSESSOR NAME

20940

ASSESSOR NUMBER

Built Ecology

COMPANY

ASSESSOR SIGNATURE

Issued by a BUILDING THERMAL PERFORMANCE ASSESSOR accredited by the Association of Building Sustainability Assessors to provide NatHERS house energy ratings.



NatHERS Rated 7.5 STARS*

*www.nathers.gov.au



BUILDING ENERGY EFFICIENCY CERTIFICATE

City West Housing Pty Ltd

ISSUED TO

Unit 303 Wilson Street

ADDRESS

Site Lot Lot 3 over Lot 50

North Eveleigh

NSW

2015

1005142417

CERTIFICATION NUMBER

20/03/2013

DATE

56

CLIMATE ZONE

BERS Professional - v4.2.110811 (BERS Professional)

SOFTWARE

19.1 MJ/m² pa

SIMULATED ENERGY CONSUMPTION - HEATING

11.6 MJ/m² pa

SIMULATED ENERGY CONSUMPTION - COOLING

30.7 MJ/m² pa

TOTAL SIMULATED ENERGY CONSUMPTION

64.9 m²

FLOOR AREA - CONDITIONED

6.4 m²

FLOOR AREA - UNCONDITIONED

71.3 m²

FLOOR AREA - TOTAL

Katie Fallowfield

ASSESSOR NAME

20940

ASSESSOR NUMBER

Built Ecology

COMPANY

ASSESSOR SIGNATURE

Issued by a BUILDING THERMAL PERFORMANCE ASSESSOR accredited by the Association of Building Sustainability Assessors to provide NatHERS house energy ratings.



NatHERS Rated 6.0 STARS*

*www.nathers.gov.au



BUILDING ENERGY EFFICIENCY CERTIFICATE

1005142425
 CERTIFICATION NUMBER

20/03/2013
 DATE

56
 CLIMATE ZONE

BERS Professional - v4.2.110811 (BERS Professional)
 SOFTWARE

19.6 MJ/m² pa
 SIMULATED ENERGY CONSUMPTION - HEATING

30.1 MJ/m² pa
 SIMULATED ENERGY CONSUMPTION - COOLING

49.7 MJ/m² pa
 TOTAL SIMULATED ENERGY CONSUMPTION

42.8 m²
 FLOOR AREA - CONDITIONED

6.4 m²
 FLOOR AREA - UNCONDITIONED

49.2 m²
 FLOOR AREA - TOTAL

City West Housing Pty Ltd
 ISSUED TO

Unit 304 Wilson Street
 ADDRESS

Site Lot Lot 3 over Lot 50

North Eveleigh

NSW

2015

Katie Fallowfield
 ASSESSOR NAME

20940
 ASSESSOR NUMBER

Built Ecology
 COMPANY

ASSESSOR SIGNATURE

Issued by a BUILDING THERMAL PERFORMANCE ASSESSOR accredited by the Association of Building Sustainability Assessors to provide NatHERS house energy ratings.



NatHERS Rated 7.0 STARS*

*www.nathers.gov.au



BUILDING ENERGY EFFICIENCY CERTIFICATE

1005142433

CERTIFICATION NUMBER

20/03/2013

DATE

56

CLIMATE ZONE

BERS Professional - v4.2.110811 (BERS Professional)

SOFTWARE

10.8 MJ/m² pa

SIMULATED ENERGY CONSUMPTION - HEATING

27.3 MJ/m² pa

SIMULATED ENERGY CONSUMPTION - COOLING

38.1 MJ/m² pa

TOTAL SIMULATED ENERGY CONSUMPTION

42.8 m²

FLOOR AREA - CONDITIONED

5.5 m²

FLOOR AREA - UNCONDITIONED

48.3 m²

FLOOR AREA - TOTAL

City West Housing Pty Ltd

ISSUED TO

Unit 305 Wilson Street

ADDRESS

Site Lot Lot 3 over Lot 50

North Eveleigh

NSW

2015

Katie Fallowfield

ASSESSOR NAME

20940

ASSESSOR NUMBER

Built Ecology

COMPANY

ASSESSOR SIGNATURE

Issued by a BUILDING THERMAL PERFORMANCE ASSESSOR accredited by the Association of Building Sustainability Assessors to provide NatHERS house energy ratings.



NatHERS Rated 5.5 STARS*

*www.nathers.gov.au



BUILDING ENERGY EFFICIENCY CERTIFICATE

1005142441
 CERTIFICATION NUMBER

20/03/2013
 DATE

56
 CLIMATE ZONE

BERS Professional - v4.2.110811 (BERS Professional)
 SOFTWARE

27.0 MJ/m² pa
 SIMULATED ENERGY CONSUMPTION - HEATING

25.7 MJ/m² pa
 SIMULATED ENERGY CONSUMPTION - COOLING

52.7 MJ/m² pa
 TOTAL SIMULATED ENERGY CONSUMPTION

40.8 m²
 FLOOR AREA - CONDITIONED

8.1 m²
 FLOOR AREA - UNCONDITIONED

48.9 m²
 FLOOR AREA - TOTAL

City West Housing Pty Ltd
 ISSUED TO

Unit 306 Wilson Street
 ADDRESS

Site Lot Lot 3 over Lot 50

North Eveleigh

NSW

2015

Katie Fallowfield
 ASSESSOR NAME

20940
 ASSESSOR NUMBER

Built Ecology
 COMPANY

ASSESSOR SIGNATURE

Issued by a BUILDING THERMAL PERFORMANCE ASSESSOR accredited by the Association of Building Sustainability Assessors to provide NatHERS house energy ratings.



NatHERS Rated 5.5 STARS*

*www.nathers.gov.au



BUILDING ENERGY EFFICIENCY CERTIFICATE

1005142458
 CERTIFICATION NUMBER

20/03/2013
 DATE

56
 CLIMATE ZONE

BERS Professional - v4.2.110811 (BERS Professional)
 SOFTWARE

31.1 MJ/m² pa
 SIMULATED ENERGY CONSUMPTION - HEATING

21.3 MJ/m² pa
 SIMULATED ENERGY CONSUMPTION - COOLING

52.4 MJ/m² pa
 TOTAL SIMULATED ENERGY CONSUMPTION

40.8 m²
 FLOOR AREA - CONDITIONED

8.1 m²
 FLOOR AREA - UNCONDITIONED

48.9 m²
 FLOOR AREA - TOTAL

City West Housing Pty Ltd
 ISSUED TO

Unit 307 Wilson Street
 ADDRESS

Site Lot Lot 3 over Lot 50

North Eveleigh

NSW

2015

Katie Fallowfield
 ASSESSOR NAME

20940
 ASSESSOR NUMBER

Built Ecology
 COMPANY

ASSESSOR SIGNATURE

Issued by a BUILDING THERMAL PERFORMANCE ASSESSOR accredited by the Association of Building Sustainability Assessors to provide NatHERS house energy ratings.



NatHERS Rated 5.5 STARS*

*www.nathers.gov.au



BUILDING ENERGY EFFICIENCY CERTIFICATE

1005142466
 CERTIFICATION NUMBER

20/03/2013
 DATE

56
 CLIMATE ZONE

BERS Professional - v4.2.110811 (BERS Professional)
 SOFTWARE

27.0 MJ/m² pa
 SIMULATED ENERGY CONSUMPTION - HEATING

25.7 MJ/m² pa
 SIMULATED ENERGY CONSUMPTION - COOLING

52.7 MJ/m² pa
 TOTAL SIMULATED ENERGY CONSUMPTION

40.8 m²
 FLOOR AREA - CONDITIONED

8.1 m²
 FLOOR AREA - UNCONDITIONED

48.9 m²
 FLOOR AREA - TOTAL

City West Housing Pty Ltd
 ISSUED TO

Unit 308 Wilson Street
 ADDRESS

Site Lot Lot 3 over Lot 50

North Eveleigh

NSW

2015

Katie Fallowfield
 ASSESSOR NAME

20940
 ASSESSOR NUMBER

Built Ecology
 COMPANY

ASSESSOR SIGNATURE

Issued by a BUILDING THERMAL PERFORMANCE ASSESSOR accredited by the Association of Building Sustainability Assessors to provide NatHERS house energy ratings.



NatHERS Rated 5.5 STARS*

*www.nathers.gov.au



BUILDING ENERGY EFFICIENCY CERTIFICATE

1005142474

CERTIFICATION NUMBER

20/03/2013

DATE

56

CLIMATE ZONE

BERS Professional - v4.2.110811 (BERS Professional)

SOFTWARE

31.1 MJ/m² pa

SIMULATED ENERGY CONSUMPTION - HEATING

21.3 MJ/m² pa

SIMULATED ENERGY CONSUMPTION - COOLING

52.4 MJ/m² pa

TOTAL SIMULATED ENERGY CONSUMPTION

40.8 m²

FLOOR AREA - CONDITIONED

8.1 m²

FLOOR AREA - UNCONDITIONED

48.9 m²

FLOOR AREA - TOTAL

City West Housing Pty Ltd

ISSUED TO

Unit 309 Wilson Street

ADDRESS

Site Lot Lot 3 over Lot 50

North Eveleigh

NSW

2015

Katie Fallowfield

ASSESSOR NAME

20940

ASSESSOR NUMBER

Built Ecology

COMPANY

ASSESSOR SIGNATURE

Issued by a BUILDING THERMAL PERFORMANCE ASSESSOR accredited by the Association of Building Sustainability Assessors to provide NatHERS house energy ratings.



NatHERS Rated 5.5 STARS*

*www.nathers.gov.au



BUILDING ENERGY EFFICIENCY CERTIFICATE

1005142482

CERTIFICATION NUMBER

20/03/2013

DATE

56

CLIMATE ZONE

BERS Professional - v4.2.110811 (BERS Professional)

SOFTWARE

27.0 MJ/m² pa

SIMULATED ENERGY CONSUMPTION - HEATING

25.7 MJ/m² pa

SIMULATED ENERGY CONSUMPTION - COOLING

52.7 MJ/m² pa

TOTAL SIMULATED ENERGY CONSUMPTION

40.8 m²

FLOOR AREA - CONDITIONED

8.1 m²

FLOOR AREA - UNCONDITIONED

48.9 m²

FLOOR AREA - TOTAL

City West Housing Pty Ltd

ISSUED TO

Unit 310 Wilson Street

ADDRESS

Site Lot Lot 3 over Lot 50

North Eveleigh

NSW

2015

Katie Fallowfield

ASSESSOR NAME

20940

ASSESSOR NUMBER

Built Ecology

COMPANY

ASSESSOR SIGNATURE

Issued by a BUILDING THERMAL PERFORMANCE ASSESSOR accredited by the Association of Building Sustainability Assessors to provide NatHERS house energy ratings.



NatHERS Rated 4.5 STARS*

*www.nathers.gov.au



BUILDING ENERGY EFFICIENCY CERTIFICATE

1005142490
 CERTIFICATION NUMBER

20/03/2013
 DATE

56
 CLIMATE ZONE

BERS Professional - v4.2.110811 (BERS Professional)
 SOFTWARE

43.8 MJ/m² pa
 SIMULATED ENERGY CONSUMPTION - HEATING

23.0 MJ/m² pa
 SIMULATED ENERGY CONSUMPTION - COOLING

66.8 MJ/m² pa
 TOTAL SIMULATED ENERGY CONSUMPTION

40.8 m²
 FLOOR AREA - CONDITIONED

8.1 m²
 FLOOR AREA - UNCONDITIONED

48.9 m²
 FLOOR AREA - TOTAL

City West Housing Pty Ltd
 ISSUED TO

Unit 311 Wilson Street
 ADDRESS

Site Lot Lot 3 over Lot 50

North Eveleigh

NSW

2015

Katie Fallowfield
 ASSESSOR NAME

20940
 ASSESSOR NUMBER

Built Ecology
 COMPANY

ASSESSOR SIGNATURE

Issued by a BUILDING THERMAL PERFORMANCE ASSESSOR accredited by the Association of Building Sustainability Assessors to provide NatHERS house energy ratings.



NatHERS Rated 7.5 STARS*

*www.nathers.gov.au



BUILDING ENERGY EFFICIENCY CERTIFICATE

1005142508

CERTIFICATION NUMBER

20/03/2013

DATE

56

CLIMATE ZONE

BERS Professional - v4.2.110811 (BERS Professional)

SOFTWARE

18.0 MJ/m² pa

SIMULATED ENERGY CONSUMPTION - HEATING

10.5 MJ/m² pa

SIMULATED ENERGY CONSUMPTION - COOLING

28.5 MJ/m² pa

TOTAL SIMULATED ENERGY CONSUMPTION

64.9 m²

FLOOR AREA - CONDITIONED

6.4 m²

FLOOR AREA - UNCONDITIONED

71.3 m²

FLOOR AREA - TOTAL

City West Housing Pty Ltd

ISSUED TO

Unit 312 Wilson Street

ADDRESS

Site Lot Lot 3 over Lot 50

North Eveleigh

NSW

2015

Katie Fallowfield

ASSESSOR NAME

20940

ASSESSOR NUMBER

Built Ecology

COMPANY

ASSESSOR SIGNATURE

Issued by a BUILDING THERMAL PERFORMANCE ASSESSOR accredited by the Association of Building Sustainability Assessors to provide NatHERS house energy ratings.



NatHERS Rated 7.5 STARS*

*www.nathers.gov.au



BUILDING ENERGY EFFICIENCY CERTIFICATE

1005142516
 CERTIFICATION NUMBER

20/03/2013
 DATE

56
 CLIMATE ZONE

BERS Professional - v4.2.110811 (BERS Professional)
 SOFTWARE

11.9 MJ/m² pa
 SIMULATED ENERGY CONSUMPTION - HEATING

16.2 MJ/m² pa
 SIMULATED ENERGY CONSUMPTION - COOLING

28.1 MJ/m² pa
 TOTAL SIMULATED ENERGY CONSUMPTION

74.6 m²
 FLOOR AREA - CONDITIONED

6.2 m²
 FLOOR AREA - UNCONDITIONED

80.8 m²
 FLOOR AREA - TOTAL

City West Housing Pty Ltd
 ISSUED TO

Unit 313 Wilson Street
 ADDRESS

Site Lot Lot 3 over Lot 50

North Eveleigh

NSW

2015

Katie Fallowfield
 ASSESSOR NAME

20940
 ASSESSOR NUMBER

Built Ecology
 COMPANY

ASSESSOR SIGNATURE

Issued by a BUILDING THERMAL PERFORMANCE ASSESSOR accredited by the Association of Building Sustainability Assessors to provide NatHERS house energy ratings.



NatHERS Rated 6.0 STARS*

*www.nathers.gov.au



BUILDING ENERGY EFFICIENCY CERTIFICATE

1005142524
 CERTIFICATION NUMBER

20/03/2013
 DATE

56
 CLIMATE ZONE

BERS Professional - v4.2.110811 (BERS Professional)
 SOFTWARE

17.0 MJ/m² pa
 SIMULATED ENERGY CONSUMPTION - HEATING

30.4 MJ/m² pa
 SIMULATED ENERGY CONSUMPTION - COOLING

47.4 MJ/m² pa
 TOTAL SIMULATED ENERGY CONSUMPTION

49.6 m²
 FLOOR AREA - CONDITIONED

6.7 m²
 FLOOR AREA - UNCONDITIONED

56.3 m²
 FLOOR AREA - TOTAL

City West Housing Pty Ltd
 ISSUED TO

Unit 314 Wilson Street
 ADDRESS

Site Lot Lot 3 over Lot 50

North Eveleigh

NSW

2015

Katie Fallowfield
 ASSESSOR NAME

20940
 ASSESSOR NUMBER

Built Ecology
 COMPANY

ASSESSOR SIGNATURE

Issued by a BUILDING THERMAL PERFORMANCE ASSESSOR accredited by the Association of Building Sustainability Assessors to provide NatHERS house energy ratings.



NatHERS Rated 5.5 STARS*

*www.nathers.gov.au



BUILDING ENERGY EFFICIENCY CERTIFICATE

1005142532
 CERTIFICATION NUMBER

20/03/2013
 DATE

56
 CLIMATE ZONE

BERS Professional - v4.2.110811 (BERS Professional)
 SOFTWARE

21.2 MJ/m² pa
 SIMULATED ENERGY CONSUMPTION - HEATING

30.9 MJ/m² pa
 SIMULATED ENERGY CONSUMPTION - COOLING

52.1 MJ/m² pa
 TOTAL SIMULATED ENERGY CONSUMPTION

49.6 m²
 FLOOR AREA - CONDITIONED

6.7 m²
 FLOOR AREA - UNCONDITIONED

56.3 m²
 FLOOR AREA - TOTAL

City West Housing Pty Ltd
 ISSUED TO

Unit 315 Wilson Street
 ADDRESS

Site Lot Lot 3 over Lot 50

North Eveleigh

NSW

2015

Katie Fallowfield
 ASSESSOR NAME

20940
 ASSESSOR NUMBER

Built Ecology
 COMPANY

ASSESSOR SIGNATURE

Issued by a BUILDING THERMAL PERFORMANCE ASSESSOR accredited by the Association of Building Sustainability Assessors to provide NatHERS house energy ratings.



NatHERS Rated 4.0 STARS*

*www.nathers.gov.au



BUILDING ENERGY EFFICIENCY CERTIFICATE

1005142540
 CERTIFICATION NUMBER

20/03/2013
 DATE

56
 CLIMATE ZONE

BERS Professional - v4.2.110811 (BERS Professional)
 SOFTWARE

46.8 MJ/m² pa
 SIMULATED ENERGY CONSUMPTION - HEATING

35.9 MJ/m² pa
 SIMULATED ENERGY CONSUMPTION - COOLING

82.7 MJ/m² pa
 TOTAL SIMULATED ENERGY CONSUMPTION

46.8 m²
 FLOOR AREA - CONDITIONED

4.8 m²
 FLOOR AREA - UNCONDITIONED

51.6 m²
 FLOOR AREA - TOTAL

City West Housing Pty Ltd
 ISSUED TO

Unit 316 Wilson Street
 ADDRESS

Site Lot Lot 3 over Lot 50

North Eveleigh

NSW

2015

Katie Fallowfield
 ASSESSOR NAME

20940
 ASSESSOR NUMBER

Built Ecology
 COMPANY

ASSESSOR SIGNATURE

Issued by a BUILDING THERMAL PERFORMANCE ASSESSOR accredited by the Association of Building Sustainability Assessors to provide NatHERS house energy ratings.



NatHERS Rated 5.0 STARS*

*www.nathers.gov.au



BUILDING ENERGY EFFICIENCY CERTIFICATE

1005142557

CERTIFICATION NUMBER

20/03/2013

DATE

56

CLIMATE ZONE

BERS Professional - v4.2.110811 (BERS Professional)

SOFTWARE

22.1 MJ/m² pa

SIMULATED ENERGY CONSUMPTION - HEATING

41.6 MJ/m² pa

SIMULATED ENERGY CONSUMPTION - COOLING

63.7 MJ/m² pa

TOTAL SIMULATED ENERGY CONSUMPTION

66.0 m²

FLOOR AREA - CONDITIONED

6.8 m²

FLOOR AREA - UNCONDITIONED

72.8 m²

FLOOR AREA - TOTAL

City West Housing Pty Ltd

ISSUED TO

Unit 401 Wilson Street

ADDRESS

Site Lot Lot 3 over Lot 50

North Eveleigh

NSW

2015

Katie Fallowfield

ASSESSOR NAME

20940

ASSESSOR NUMBER

Built Ecology

COMPANY

ASSESSOR SIGNATURE

Issued by a BUILDING THERMAL PERFORMANCE ASSESSOR accredited by the Association of Building Sustainability Assessors to provide NatHERS house energy ratings.



NatHERS Rated 5.0 STARS*

*www.nathers.gov.au



BUILDING ENERGY EFFICIENCY CERTIFICATE

1005142565
 CERTIFICATION NUMBER

20/03/2013
 DATE

56
 CLIMATE ZONE

BERS Professional - v4.2.110811 (BERS Professional)
 SOFTWARE

12.2 MJ/m² pa
 SIMULATED ENERGY CONSUMPTION - HEATING

46.6 MJ/m² pa
 SIMULATED ENERGY CONSUMPTION - COOLING

58.8 MJ/m² pa
 TOTAL SIMULATED ENERGY CONSUMPTION

77.3 m²
 FLOOR AREA - CONDITIONED

4.8 m²
 FLOOR AREA - UNCONDITIONED

82.1 m²
 FLOOR AREA - TOTAL

City West Housing Pty Ltd
 ISSUED TO

Unit 402 Wilson Street
 ADDRESS

Site Lot Lot 3 over Lot 50

North Eveleigh

NSW

2015

Katie Fallowfield
 ASSESSOR NAME

20940
 ASSESSOR NUMBER

Built Ecology
 COMPANY

ASSESSOR SIGNATURE

Issued by a BUILDING THERMAL PERFORMANCE ASSESSOR accredited by the Association of Building Sustainability Assessors to provide NatHERS house energy ratings.



NatHERS Rated 7.5 STARS*

*www.nathers.gov.au



BUILDING ENERGY EFFICIENCY CERTIFICATE

1005142573

CERTIFICATION NUMBER

20/03/2013

DATE

56

CLIMATE ZONE

BERS Professional - v4.2.110811 (BERS Professional)

SOFTWARE

19.1 MJ/m² pa

SIMULATED ENERGY CONSUMPTION - HEATING

11.6 MJ/m² pa

SIMULATED ENERGY CONSUMPTION - COOLING

30.7 MJ/m² pa

TOTAL SIMULATED ENERGY CONSUMPTION

64.9 m²

FLOOR AREA - CONDITIONED

6.4 m²

FLOOR AREA - UNCONDITIONED

71.3 m²

FLOOR AREA - TOTAL

City West Housing Pty Ltd

ISSUED TO

Unit 403 Wilson Street

ADDRESS

Site Lot Lot 3 over Lot 50

North Eveleigh

NSW

2015

Katie Fallowfield

ASSESSOR NAME

20940

ASSESSOR NUMBER

Built Ecology

COMPANY

ASSESSOR SIGNATURE

Issued by a BUILDING THERMAL PERFORMANCE ASSESSOR accredited by the Association of Building Sustainability Assessors to provide NatHERS house energy ratings.



NatHERS Rated 6.0 STARS*

*www.nathers.gov.au



BUILDING ENERGY EFFICIENCY CERTIFICATE

1005142581
 CERTIFICATION NUMBER

20/03/2013
 DATE

56
 CLIMATE ZONE

BERS Professional - v4.2.110811 (BERS Professional)
 SOFTWARE

19.6 MJ/m² pa
 SIMULATED ENERGY CONSUMPTION - HEATING

30.1 MJ/m² pa
 SIMULATED ENERGY CONSUMPTION - COOLING

49.7 MJ/m² pa
 TOTAL SIMULATED ENERGY CONSUMPTION

42.8 m²
 FLOOR AREA - CONDITIONED

6.4 m²
 FLOOR AREA - UNCONDITIONED

49.2 m²
 FLOOR AREA - TOTAL

City West Housing Pty Ltd
 ISSUED TO

Unit 404 Wilson Street
 ADDRESS

Site Lot Lot 3 over Lot 50

North Eveleigh

NSW

2015

Katie Fallowfield
 ASSESSOR NAME

20940
 ASSESSOR NUMBER

Built Ecology
 COMPANY

ASSESSOR SIGNATURE

Issued by a BUILDING THERMAL PERFORMANCE ASSESSOR accredited by the Association of Building Sustainability Assessors to provide NatHERS house energy ratings.



NatHERS Rated 7.0 STARS*

*www.nathers.gov.au



BUILDING ENERGY EFFICIENCY CERTIFICATE

1005142599
 CERTIFICATION NUMBER

20/03/2013
 DATE

56
 CLIMATE ZONE

BERS Professional - v4.2.110811 (BERS Professional)
 SOFTWARE

10.8 MJ/m² pa
 SIMULATED ENERGY CONSUMPTION - HEATING

27.3 MJ/m² pa
 SIMULATED ENERGY CONSUMPTION - COOLING

38.1 MJ/m² pa
 TOTAL SIMULATED ENERGY CONSUMPTION

42.8 m²
 FLOOR AREA - CONDITIONED

5.5 m²
 FLOOR AREA - UNCONDITIONED

48.3 m²
 FLOOR AREA - TOTAL

City West Housing Pty Ltd
 ISSUED TO

Unit 405 Wilson Street
 ADDRESS

Site Lot Lot 3 over Lot 50

North Eveleigh

NSW

2015

Katie Fallowfield
 ASSESSOR NAME

20940
 ASSESSOR NUMBER

Built Ecology
 COMPANY

ASSESSOR SIGNATURE

Issued by a BUILDING THERMAL PERFORMANCE ASSESSOR accredited by the Association of Building Sustainability Assessors to provide NatHERS house energy ratings.



NatHERS Rated 5.5 STARS*

*www.nathers.gov.au



BUILDING ENERGY EFFICIENCY CERTIFICATE

1005142607

CERTIFICATION NUMBER

20/03/2013

DATE

56

CLIMATE ZONE

BERS Professional - v4.2.110811 (BERS Professional)

SOFTWARE

27.0 MJ/m² pa

SIMULATED ENERGY CONSUMPTION - HEATING

25.7 MJ/m² pa

SIMULATED ENERGY CONSUMPTION - COOLING

52.7 MJ/m² pa

TOTAL SIMULATED ENERGY CONSUMPTION

40.8 m²

FLOOR AREA - CONDITIONED

8.1 m²

FLOOR AREA - UNCONDITIONED

48.9 m²

FLOOR AREA - TOTAL

City West Housing Pty Ltd

ISSUED TO

Unit 406 Wilson Street

ADDRESS

Site Lot Lot 3 over Lot 50

North Eveleigh

NSW

2015

Katie Fallowfield

ASSESSOR NAME

20940

ASSESSOR NUMBER

Built Ecology

COMPANY

ASSESSOR SIGNATURE

Issued by a BUILDING THERMAL PERFORMANCE ASSESSOR accredited by the Association of Building Sustainability Assessors to provide NatHERS house energy ratings.



NatHERS Rated 5.5 STARS*

*www.nathers.gov.au



BUILDING ENERGY EFFICIENCY CERTIFICATE

1005142615
 CERTIFICATION NUMBER

20/03/2013
 DATE

56
 CLIMATE ZONE

BERS Professional - v4.2.110811 (BERS Professional)
 SOFTWARE

31.1 MJ/m² pa
 SIMULATED ENERGY CONSUMPTION - HEATING

21.3 MJ/m² pa
 SIMULATED ENERGY CONSUMPTION - COOLING

52.4 MJ/m² pa
 TOTAL SIMULATED ENERGY CONSUMPTION

40.8 m²
 FLOOR AREA - CONDITIONED

8.1 m²
 FLOOR AREA - UNCONDITIONED

48.9 m²
 FLOOR AREA - TOTAL

City West Housing Pty Ltd
 ISSUED TO

Unit 407 Wilson Street
 ADDRESS

Site Lot Lot 3 over Lot 50

North Eveleigh

NSW

2015

Katie Fallowfield
 ASSESSOR NAME

20940
 ASSESSOR NUMBER

Built Ecology
 COMPANY

ASSESSOR SIGNATURE

Issued by a BUILDING THERMAL PERFORMANCE ASSESSOR accredited by the Association of Building Sustainability Assessors to provide NatHERS house energy ratings.



NatHERS Rated 5.5 STARS*

*www.nathers.gov.au



BUILDING ENERGY EFFICIENCY CERTIFICATE

1005142623
 CERTIFICATION NUMBER

20/03/2013
 DATE

56
 CLIMATE ZONE

BERS Professional - v4.2.110811 (BERS Professional)
 SOFTWARE

27.0 MJ/m² pa
 SIMULATED ENERGY CONSUMPTION - HEATING

25.7 MJ/m² pa
 SIMULATED ENERGY CONSUMPTION - COOLING

52.7 MJ/m² pa
 TOTAL SIMULATED ENERGY CONSUMPTION

40.8 m²
 FLOOR AREA - CONDITIONED

8.1 m²
 FLOOR AREA - UNCONDITIONED

48.9 m²
 FLOOR AREA - TOTAL

City West Housing Pty Ltd
 ISSUED TO

Unit 408 Wilson Street
 ADDRESS

Site Lot Lot 3 over Lot 50

North Eveleigh

NSW

2015

Katie Fallowfield
 ASSESSOR NAME

20940
 ASSESSOR NUMBER

Built Ecology
 COMPANY

ASSESSOR SIGNATURE

Issued by a BUILDING THERMAL PERFORMANCE ASSESSOR accredited by the Association of Building Sustainability Assessors to provide NatHERS house energy ratings.



NatHERS Rated 5.5 STARS*

*www.nathers.gov.au



BUILDING ENERGY EFFICIENCY CERTIFICATE

1005142631
 CERTIFICATION NUMBER

20/03/2013
 DATE

56
 CLIMATE ZONE

BERS Professional - v4.2.110811 (BERS Professional)
 SOFTWARE

31.1 MJ/m² pa
 SIMULATED ENERGY CONSUMPTION - HEATING

21.3 MJ/m² pa
 SIMULATED ENERGY CONSUMPTION - COOLING

52.4 MJ/m² pa
 TOTAL SIMULATED ENERGY CONSUMPTION

40.8 m²
 FLOOR AREA - CONDITIONED

8.1 m²
 FLOOR AREA - UNCONDITIONED

48.9 m²
 FLOOR AREA - TOTAL

City West Housing Pty Ltd
 ISSUED TO

Unit 409 Wilson Street
 ADDRESS

Site Lot Lot 3 over Lot 50

North Eveleigh

NSW

2015

Katie Fallowfield
 ASSESSOR NAME

20940
 ASSESSOR NUMBER

Built Ecology
 COMPANY

ASSESSOR SIGNATURE

Issued by a BUILDING THERMAL PERFORMANCE ASSESSOR accredited by the Association of Building Sustainability Assessors to provide NatHERS house energy ratings.



NatHERS Rated 5.5 STARS*

*www.nathers.gov.au



BUILDING ENERGY EFFICIENCY CERTIFICATE

1005142649
 CERTIFICATION NUMBER

20/03/2013
 DATE

56
 CLIMATE ZONE

BERS Professional - v4.2.110811 (BERS Professional)
 SOFTWARE

27.0 MJ/m² pa
 SIMULATED ENERGY CONSUMPTION - HEATING

25.7 MJ/m² pa
 SIMULATED ENERGY CONSUMPTION - COOLING

52.7 MJ/m² pa
 TOTAL SIMULATED ENERGY CONSUMPTION

40.8 m²
 FLOOR AREA - CONDITIONED

8.1 m²
 FLOOR AREA - UNCONDITIONED

48.9 m²
 FLOOR AREA - TOTAL

City West Housing Pty Ltd
 ISSUED TO

Unit 410 Wilson Street
 ADDRESS

Site Lot Lot 3 over Lot 50

North Eveleigh

NSW

2015

Katie Fallowfield
 ASSESSOR NAME

20940
 ASSESSOR NUMBER

Built Ecology
 COMPANY

ASSESSOR SIGNATURE

Issued by a BUILDING THERMAL PERFORMANCE ASSESSOR accredited by the Association of Building Sustainability Assessors to provide NatHERS house energy ratings.



NatHERS Rated 4.5 STARS*

*www.nathers.gov.au



BUILDING ENERGY EFFICIENCY CERTIFICATE

1005142656
 CERTIFICATION NUMBER

20/03/2013
 DATE

56
 CLIMATE ZONE

BERS Professional - v4.2.110811 (BERS Professional)
 SOFTWARE

43.8 MJ/m² pa
 SIMULATED ENERGY CONSUMPTION - HEATING

23.0 MJ/m² pa
 SIMULATED ENERGY CONSUMPTION - COOLING

66.8 MJ/m² pa
 TOTAL SIMULATED ENERGY CONSUMPTION

40.8 m²
 FLOOR AREA - CONDITIONED

8.1 m²
 FLOOR AREA - UNCONDITIONED

48.9 m²
 FLOOR AREA - TOTAL

City West Housing Pty Ltd
 ISSUED TO

Unit 411 Wilson Street
 ADDRESS

Site Lot Lot 3 over Lot 50

North Eveleigh

NSW

2015

Katie Fallowfield
 ASSESSOR NAME

20940
 ASSESSOR NUMBER

Built Ecology
 COMPANY

ASSESSOR SIGNATURE

Issued by a BUILDING THERMAL PERFORMANCE ASSESSOR accredited by the Association of Building Sustainability Assessors to provide NatHERS house energy ratings.



NatHERS Rated 7.5 STARS*

*www.nathers.gov.au



BUILDING ENERGY EFFICIENCY CERTIFICATE

1005142664
 CERTIFICATION NUMBER

20/03/2013
 DATE

56
 CLIMATE ZONE

BERS Professional - v4.2.110811 (BERS Professional)
 SOFTWARE

18.0 MJ/m² pa
 SIMULATED ENERGY CONSUMPTION - HEATING

10.5 MJ/m² pa
 SIMULATED ENERGY CONSUMPTION - COOLING

28.5 MJ/m² pa
 TOTAL SIMULATED ENERGY CONSUMPTION

64.9 m²
 FLOOR AREA - CONDITIONED

6.4 m²
 FLOOR AREA - UNCONDITIONED

71.3 m²
 FLOOR AREA - TOTAL

City West Housing Pty Ltd
 ISSUED TO

Unit 412 Wilson Street
 ADDRESS

Site Lot Lot 3 over Lot 50

North Eveleigh

NSW

2015

Katie Fallowfield
 ASSESSOR NAME

20940
 ASSESSOR NUMBER

Built Ecology
 COMPANY

ASSESSOR SIGNATURE

Issued by a BUILDING THERMAL PERFORMANCE ASSESSOR accredited by the Association of Building Sustainability Assessors to provide NatHERS house energy ratings.



NatHERS Rated 7.5 STARS*

*www.nathers.gov.au



BUILDING ENERGY EFFICIENCY CERTIFICATE

1005142672
 CERTIFICATION NUMBER

20/03/2013
 DATE

56
 CLIMATE ZONE

BERS Professional - v4.2.110811 (BERS Professional)
 SOFTWARE

11.9 MJ/m² pa
 SIMULATED ENERGY CONSUMPTION - HEATING

16.2 MJ/m² pa
 SIMULATED ENERGY CONSUMPTION - COOLING

28.1 MJ/m² pa
 TOTAL SIMULATED ENERGY CONSUMPTION

74.6 m²
 FLOOR AREA - CONDITIONED

6.2 m²
 FLOOR AREA - UNCONDITIONED

80.8 m²
 FLOOR AREA - TOTAL

City West Housing Pty Ltd
 ISSUED TO

Unit 413 Wilson Street
 ADDRESS

Site Lot Lot 3 over Lot 50

North Eveleigh

NSW

2015

Katie Fallowfield
 ASSESSOR NAME

20940
 ASSESSOR NUMBER

Built Ecology
 COMPANY

ASSESSOR SIGNATURE

Issued by a BUILDING THERMAL PERFORMANCE ASSESSOR accredited by the Association of Building Sustainability Assessors to provide NatHERS house energy ratings.



NatHERS Rated 6.0 STARS*

*www.nathers.gov.au



BUILDING ENERGY EFFICIENCY CERTIFICATE

1005142680
 CERTIFICATION NUMBER

20/03/2013
 DATE

56
 CLIMATE ZONE

BERS Professional - v4.2.110811 (BERS Professional)
 SOFTWARE

17.0 MJ/m² pa
 SIMULATED ENERGY CONSUMPTION - HEATING

30.4 MJ/m² pa
 SIMULATED ENERGY CONSUMPTION - COOLING

47.4 MJ/m² pa
 TOTAL SIMULATED ENERGY CONSUMPTION

49.6 m²
 FLOOR AREA - CONDITIONED

6.7 m²
 FLOOR AREA - UNCONDITIONED

56.3 m²
 FLOOR AREA - TOTAL

City West Housing Pty Ltd
 ISSUED TO

Unit 414 Wilson Street
 ADDRESS

Site Lot Lot 3 over Lot 50

North Eveleigh

NSW

2015

Katie Fallowfield
 ASSESSOR NAME

20940
 ASSESSOR NUMBER

Built Ecology
 COMPANY

ASSESSOR SIGNATURE

Issued by a BUILDING THERMAL PERFORMANCE ASSESSOR accredited by the Association of Building Sustainability Assessors to provide NatHERS house energy ratings.



NatHERS Rated 5.5 STARS*

*www.nathers.gov.au



BUILDING ENERGY EFFICIENCY CERTIFICATE

1005142755
 CERTIFICATION NUMBER

20/03/2013
 DATE

56
 CLIMATE ZONE

BERS Professional - v4.2.110811 (BERS Professional)
 SOFTWARE

21.2 MJ/m² pa
 SIMULATED ENERGY CONSUMPTION - HEATING

30.9 MJ/m² pa
 SIMULATED ENERGY CONSUMPTION - COOLING

52.1 MJ/m² pa
 TOTAL SIMULATED ENERGY CONSUMPTION

49.6 m²
 FLOOR AREA - CONDITIONED

6.7 m²
 FLOOR AREA - UNCONDITIONED

56.3 m²
 FLOOR AREA - TOTAL

City West Housing Pty Ltd
 ISSUED TO

Unit 415 Wilson Street
 ADDRESS

Site Lot Lot 3 over Lot 50

North Eveleigh

NSW

2015

Katie Fallowfield
 ASSESSOR NAME

20940
 ASSESSOR NUMBER

Built Ecology
 COMPANY

ASSESSOR SIGNATURE

Issued by a BUILDING THERMAL PERFORMANCE ASSESSOR accredited by the Association of Building Sustainability Assessors to provide NatHERS house energy ratings.



NatHERS Rated 5.0 STARS*

*www.nathers.gov.au



BUILDING ENERGY EFFICIENCY CERTIFICATE

1005142763
 CERTIFICATION NUMBER

20/03/2013
 DATE

56
 CLIMATE ZONE

BERS Professional - v4.2.110811 (BERS Professional)
 SOFTWARE

41.2 MJ/m² pa
 SIMULATED ENERGY CONSUMPTION - HEATING

23.7 MJ/m² pa
 SIMULATED ENERGY CONSUMPTION - COOLING

64.9 MJ/m² pa
 TOTAL SIMULATED ENERGY CONSUMPTION

89.6 m²
 FLOOR AREA - CONDITIONED

4.3 m²
 FLOOR AREA - UNCONDITIONED

93.9 m²
 FLOOR AREA - TOTAL

City West Housing Pty Ltd
 ISSUED TO

Unit 416 Wilson Street
 ADDRESS

Site Lot Lot 3 over Lot 50

North Eveleigh

NSW

2015

Katie Fallowfield
 ASSESSOR NAME

20940
 ASSESSOR NUMBER

Built Ecology
 COMPANY

ASSESSOR SIGNATURE

Issued by a BUILDING THERMAL PERFORMANCE ASSESSOR accredited by the Association of Building Sustainability Assessors to provide NatHERS house energy ratings.



NatHERS Rated 5.0 STARS*

*www.nathers.gov.au



BUILDING ENERGY EFFICIENCY CERTIFICATE

1005142771
 CERTIFICATION NUMBER

20/03/2013
 DATE

56
 CLIMATE ZONE

BERS Professional - v4.2.110811 (BERS Professional)
 SOFTWARE

22.1 MJ/m² pa
 SIMULATED ENERGY CONSUMPTION - HEATING

41.6 MJ/m² pa
 SIMULATED ENERGY CONSUMPTION - COOLING

63.7 MJ/m² pa
 TOTAL SIMULATED ENERGY CONSUMPTION

66.0 m²
 FLOOR AREA - CONDITIONED

6.8 m²
 FLOOR AREA - UNCONDITIONED

72.8 m²
 FLOOR AREA - TOTAL

City West Housing Pty Ltd
 ISSUED TO

Unit 501 Wilson Street
 ADDRESS

Site Lot Lot 3 over Lot 50

North Eveleigh

NSW

2015

Katie Fallowfield
 ASSESSOR NAME

20940
 ASSESSOR NUMBER

Built Ecology
 COMPANY

ASSESSOR SIGNATURE

Issued by a BUILDING THERMAL PERFORMANCE ASSESSOR accredited by the Association of Building Sustainability Assessors to provide NatHERS house energy ratings.



NatHERS Rated 5.0 STARS*

*www.nathers.gov.au



BUILDING ENERGY EFFICIENCY CERTIFICATE

1005142789

CERTIFICATION NUMBER

20/03/2013

DATE

56

CLIMATE ZONE

BERS Professional - v4.2.110811 (BERS Professional)

SOFTWARE

12.2 MJ/m² pa

SIMULATED ENERGY CONSUMPTION - HEATING

46.6 MJ/m² pa

SIMULATED ENERGY CONSUMPTION - COOLING

58.8 MJ/m² pa

TOTAL SIMULATED ENERGY CONSUMPTION

77.3 m²

FLOOR AREA - CONDITIONED

4.8 m²

FLOOR AREA - UNCONDITIONED

82.1 m²

FLOOR AREA - TOTAL

City West Housing Pty Ltd

ISSUED TO

Unit 502 Wilson Street

ADDRESS

Site Lot Lot 3 over Lot 50

North Eveleigh

NSW

2015

Katie Fallowfield

ASSESSOR NAME

20940

ASSESSOR NUMBER

Built Ecology

COMPANY

ASSESSOR SIGNATURE

Issued by a BUILDING THERMAL PERFORMANCE ASSESSOR accredited by the Association of Building Sustainability Assessors to provide NatHERS house energy ratings.



NatHERS Rated 7.5 STARS*

*www.nathers.gov.au



BUILDING ENERGY EFFICIENCY CERTIFICATE

1005142797

CERTIFICATION NUMBER

20/03/2013

DATE

56

CLIMATE ZONE

BERS Professional - v4.2.110811 (BERS Professional)

SOFTWARE

19.1 MJ/m² pa

SIMULATED ENERGY CONSUMPTION - HEATING

11.6 MJ/m² pa

SIMULATED ENERGY CONSUMPTION - COOLING

30.7 MJ/m² pa

TOTAL SIMULATED ENERGY CONSUMPTION

64.9 m²

FLOOR AREA - CONDITIONED

6.4 m²

FLOOR AREA - UNCONDITIONED

71.3 m²

FLOOR AREA - TOTAL

City West Housing Pty Ltd

ISSUED TO

Unit 503 Wilson Street

ADDRESS

Site Lot Lot 3 over Lot 50

North Eveleigh

NSW

2015

Katie Fallowfield

ASSESSOR NAME

20940

ASSESSOR NUMBER

Built Ecology

COMPANY

ASSESSOR SIGNATURE

Issued by a BUILDING THERMAL PERFORMANCE ASSESSOR accredited by the Association of Building Sustainability Assessors to provide NatHERS house energy ratings.



NatHERS Rated 5.5 STARS*

*www.nathers.gov.au



BUILDING ENERGY EFFICIENCY CERTIFICATE

1005142805
 CERTIFICATION NUMBER

20/03/2013
 DATE

56
 CLIMATE ZONE

BERS Professional - v4.2.110811 (BERS Professional)
 SOFTWARE

25.2 MJ/m² pa
 SIMULATED ENERGY CONSUMPTION - HEATING

31.4 MJ/m² pa
 SIMULATED ENERGY CONSUMPTION - COOLING

56.6 MJ/m² pa
 TOTAL SIMULATED ENERGY CONSUMPTION

42.8 m²
 FLOOR AREA - CONDITIONED

6.4 m²
 FLOOR AREA - UNCONDITIONED

49.2 m²
 FLOOR AREA - TOTAL

City West Housing Pty Ltd
 ISSUED TO

Unit 504 Wilson Street
 ADDRESS

Site Lot Lot 3 over Lot 50

North Eveleigh

NSW

2015

Katie Fallowfield
 ASSESSOR NAME

20940
 ASSESSOR NUMBER

Built Ecology
 COMPANY

ASSESSOR SIGNATURE

Issued by a BUILDING THERMAL PERFORMANCE ASSESSOR accredited by the Association of Building Sustainability Assessors to provide NatHERS house energy ratings.



NatHERS Rated 6.0 STARS*

*www.nathers.gov.au



BUILDING ENERGY EFFICIENCY CERTIFICATE

1005142813
 CERTIFICATION NUMBER

20/03/2013
 DATE

56
 CLIMATE ZONE

BERS Professional - v4.2.110811 (BERS Professional)
 SOFTWARE

23.6 MJ/m² pa
 SIMULATED ENERGY CONSUMPTION - HEATING

22.8 MJ/m² pa
 SIMULATED ENERGY CONSUMPTION - COOLING

46.4 MJ/m² pa
 TOTAL SIMULATED ENERGY CONSUMPTION

42.8 m²
 FLOOR AREA - CONDITIONED

5.5 m²
 FLOOR AREA - UNCONDITIONED

48.3 m²
 FLOOR AREA - TOTAL

City West Housing Pty Ltd
 ISSUED TO

Unit 505 Wilson Street
 ADDRESS

Site Lot Lot 3 over Lot 50

North Eveleigh

NSW

2015

Katie Fallowfield
 ASSESSOR NAME

20940
 ASSESSOR NUMBER

Built Ecology
 COMPANY

ASSESSOR SIGNATURE

Issued by a BUILDING THERMAL PERFORMANCE ASSESSOR accredited by the Association of Building Sustainability Assessors to provide NatHERS house energy ratings.



NatHERS Rated 5.0 STARS*

*www.nathers.gov.au



BUILDING ENERGY EFFICIENCY CERTIFICATE

1005142821
CERTIFICATION NUMBER

20/03/2013
DATE

56
CLIMATE ZONE

BERS Professional - v4.2.110811 (BERS Professional)
SOFTWARE

38.8 MJ/m² pa
SIMULATED ENERGY CONSUMPTION - HEATING

20.9 MJ/m² pa
SIMULATED ENERGY CONSUMPTION - COOLING

59.7 MJ/m² pa
TOTAL SIMULATED ENERGY CONSUMPTION

84.7 m²
FLOOR AREA - CONDITIONED

11.4 m²
FLOOR AREA - UNCONDITIONED

96.1 m²
FLOOR AREA - TOTAL

City West Housing Pty Ltd
ISSUED TO

Unit 506 Wilson Street
ADDRESS

Site Lot Lot 3 over Lot 50

North Eveleigh

NSW

2015

Katie Fallowfield
ASSESSOR NAME

20940
ASSESSOR NUMBER

Built Ecology
COMPANY

ASSESSOR SIGNATURE

Issued by a BUILDING THERMAL PERFORMANCE ASSESSOR accredited by the Association of Building Sustainability Assessors to provide NatHERS house energy ratings.



NatHERS Rated 5.5 STARS*

*www.nathers.gov.au



BUILDING ENERGY EFFICIENCY CERTIFICATE

1005142839
 CERTIFICATION NUMBER
 20/03/2013
 DATE
 56
 CLIMATE ZONE
 BERS Professional - v4.2.110811 (BERS Professional)
 SOFTWARE
 38.3 MJ/m² pa
 SIMULATED ENERGY CONSUMPTION - HEATING
 19.6 MJ/m² pa
 SIMULATED ENERGY CONSUMPTION - COOLING
 57.9 MJ/m² pa
 TOTAL SIMULATED ENERGY CONSUMPTION
 94.0 m²
 FLOOR AREA - CONDITIONED
 2.0 m²
 FLOOR AREA - UNCONDITIONED
 96.0 m²
 FLOOR AREA - TOTAL

City West Housing Pty Ltd
 ISSUED TO
 Unit 507 Wilson Street
 ADDRESS
 Site Lot Lot 3 over Lot 50
 North Eveleigh
 NSW
 2015

Katie Fallowfield
 ASSESSOR NAME
 20940
 ASSESSOR NUMBER
 Built Ecology
 COMPANY

ASSESSOR SIGNATURE
 Issued by a BUILDING THERMAL PERFORMANCE ASSESSOR accredited by the Association of Building Sustainability Assessors to provide NatHERS house energy ratings.



NatHERS Rated 5.0 STARS*

*www.nathers.gov.au



BUILDING ENERGY EFFICIENCY CERTIFICATE

1005142847

CERTIFICATION NUMBER

20/03/2013

DATE

56

CLIMATE ZONE

BERS Professional - v4.2.110811 (BERS Professional)

SOFTWARE

38.8 MJ/m² pa

SIMULATED ENERGY CONSUMPTION - HEATING

20.9 MJ/m² pa

SIMULATED ENERGY CONSUMPTION - COOLING

59.7 MJ/m² pa

TOTAL SIMULATED ENERGY CONSUMPTION

84.7 m²

FLOOR AREA - CONDITIONED

11.4 m²

FLOOR AREA - UNCONDITIONED

96.1 m²

FLOOR AREA - TOTAL

City West Housing Pty Ltd

ISSUED TO

Unit 508 Wilson Street

ADDRESS

Site Lot Lot 3 over Lot 50

North Eveleigh

NSW

2015

Katie Fallowfield

ASSESSOR NAME

20940

ASSESSOR NUMBER

Built Ecology

COMPANY

ASSESSOR SIGNATURE

Issued by a BUILDING THERMAL PERFORMANCE ASSESSOR accredited by the Association of Building Sustainability Assessors to provide NatHERS house energy ratings.



NatHERS Rated 5.5 STARS*

*www.nathers.gov.au



BUILDING ENERGY EFFICIENCY CERTIFICATE

1005142854
 CERTIFICATION NUMBER

20/03/2013
 DATE

56
 CLIMATE ZONE

BERS Professional - v4.2.110811 (BERS Professional)
 SOFTWARE

38.8 MJ/m² pa
 SIMULATED ENERGY CONSUMPTION - HEATING

19.6 MJ/m² pa
 SIMULATED ENERGY CONSUMPTION - COOLING

57.9 MJ/m² pa
 TOTAL SIMULATED ENERGY CONSUMPTION

94.0 m²
 FLOOR AREA - CONDITIONED

2.0 m²
 FLOOR AREA - UNCONDITIONED

96.0 m²
 FLOOR AREA - TOTAL

City West Housing Pty Ltd
 ISSUED TO

Unit 509 Wilson Street
 ADDRESS

Site Lot Lot 3 over Lot 50

North Eveleigh

NSW

2015

Katie Fallowfield
 ASSESSOR NAME

20940
 ASSESSOR NUMBER

Built Ecology
 COMPANY

ASSESSOR SIGNATURE

Issued by a BUILDING THERMAL PERFORMANCE ASSESSOR accredited by the Association of Building Sustainability Assessors to provide NatHERS house energy ratings.



NatHERS Rated 5.0 STARS*

*www.nathers.gov.au



BUILDING ENERGY EFFICIENCY CERTIFICATE

1005142862
 CERTIFICATION NUMBER

20/03/2013
 DATE

56
 CLIMATE ZONE

BERS Professional - v4.2.110811 (BERS Professional)
 SOFTWARE

38.8 MJ/m² pa
 SIMULATED ENERGY CONSUMPTION - HEATING

20.9 MJ/m² pa
 SIMULATED ENERGY CONSUMPTION - COOLING

59.7 MJ/m² pa
 TOTAL SIMULATED ENERGY CONSUMPTION

84.7 m²
 FLOOR AREA - CONDITIONED

11.4 m²
 FLOOR AREA - UNCONDITIONED

96.1 m²
 FLOOR AREA - TOTAL

City West Housing Pty Ltd
 ISSUED TO

Unit 510 Wilson Street
 ADDRESS

Site Lot Lot 3 over Lot 50

North Eveleigh

NSW

2015

Katie Fallowfield
 ASSESSOR NAME

20940
 ASSESSOR NUMBER

Built Ecology
 COMPANY

ASSESSOR SIGNATURE

Issued by a BUILDING THERMAL PERFORMANCE ASSESSOR accredited by the Association of Building Sustainability Assessors to provide NatHERS house energy ratings.



NatHERS Rated 5.0 STARS*

*www.nathers.gov.au



BUILDING ENERGY EFFICIENCY CERTIFICATE

1005142870
 CERTIFICATION NUMBER

20/03/2013
 DATE

56
 CLIMATE ZONE

BERS Professional - v4.2.110811 (BERS Professional)
 SOFTWARE

44.3 MJ/m² pa
 SIMULATED ENERGY CONSUMPTION - HEATING

20.0 MJ/m² pa
 SIMULATED ENERGY CONSUMPTION - COOLING

64.3 MJ/m² pa
 TOTAL SIMULATED ENERGY CONSUMPTION

94.0 m²
 FLOOR AREA - CONDITIONED

2.0 m²
 FLOOR AREA - UNCONDITIONED

96.0 m²
 FLOOR AREA - TOTAL

City West Housing Pty Ltd
 ISSUED TO

Unit 511 Wilson Street
 ADDRESS

Site Lot Lot 3 over Lot 50

North Eveleigh

NSW

2015

Katie Fallowfield
 ASSESSOR NAME

20940
 ASSESSOR NUMBER

Built Ecology
 COMPANY

ASSESSOR SIGNATURE

Issued by a BUILDING THERMAL PERFORMANCE ASSESSOR accredited by the Association of Building Sustainability Assessors to provide NatHERS house energy ratings.



NatHERS Rated 7.0 STARS*

*www.nathers.gov.au



BUILDING ENERGY EFFICIENCY CERTIFICATE

City West Housing Pty Ltd

ISSUED TO

Unit 512 Wilson Street

ADDRESS

Site Lot Lot 3 over Lot 50

North Eveleigh

NSW

2015

1005142888

CERTIFICATION NUMBER

20/03/2013

DATE

56

CLIMATE ZONE

BERS Professional - v4.2.110811 (BERS Professional)

SOFTWARE

23.9 MJ/m² pa

SIMULATED ENERGY CONSUMPTION - HEATING

8.3 MJ/m² pa

SIMULATED ENERGY CONSUMPTION - COOLING

32.2 MJ/m² pa

TOTAL SIMULATED ENERGY CONSUMPTION

64.9 m²

FLOOR AREA - CONDITIONED

6.4 m²

FLOOR AREA - UNCONDITIONED

71.3 m²

FLOOR AREA - TOTAL

Katie Fallowfield

ASSESSOR NAME

20940

ASSESSOR NUMBER

Built Ecology

COMPANY

ASSESSOR SIGNATURE

Issued by a BUILDING THERMAL PERFORMANCE ASSESSOR accredited by the Association of Building Sustainability Assessors to provide NatHERS house energy ratings.



NatHERS Rated 7.0 STARS*

*www.nathers.gov.au



BUILDING ENERGY EFFICIENCY CERTIFICATE

1005142896

CERTIFICATION NUMBER

20/03/2013

DATE

56

CLIMATE ZONE

BERS Professional - v4.2.110811 (BERS Professional)

SOFTWARE

21.1 MJ/m² pa

SIMULATED ENERGY CONSUMPTION - HEATING

12.1 MJ/m² pa

SIMULATED ENERGY CONSUMPTION - COOLING

33.2 MJ/m² pa

TOTAL SIMULATED ENERGY CONSUMPTION

74.6 m²

FLOOR AREA - CONDITIONED

6.2 m²

FLOOR AREA - UNCONDITIONED

80.8 m²

FLOOR AREA - TOTAL

City West Housing Pty Ltd

ISSUED TO

Unit 513 Wilson Street

ADDRESS

Site Lot Lot 3 over Lot 50

North Eveleigh

NSW

2015

Katie Fallowfield

ASSESSOR NAME

20940

ASSESSOR NUMBER

Built Ecology

COMPANY

ASSESSOR SIGNATURE

Issued by a BUILDING THERMAL PERFORMANCE ASSESSOR accredited by the Association of Building Sustainability Assessors to provide NatHERS house energy ratings.



NatHERS Rated 6.5 STARS*

*www.nathers.gov.au



BUILDING ENERGY EFFICIENCY CERTIFICATE

1005142904
 CERTIFICATION NUMBER

20/03/2013
 DATE

56
 CLIMATE ZONE

BERS Professional - v4.2.110811 (BERS Professional)
 SOFTWARE

29.8 MJ/m² pa
 SIMULATED ENERGY CONSUMPTION - HEATING

13.8 MJ/m² pa
 SIMULATED ENERGY CONSUMPTION - COOLING

43.6 MJ/m² pa
 TOTAL SIMULATED ENERGY CONSUMPTION

49.6 m²
 FLOOR AREA - CONDITIONED

6.7 m²
 FLOOR AREA - UNCONDITIONED

56.3 m²
 FLOOR AREA - TOTAL

City West Housing Pty Ltd
 ISSUED TO

Unit 514 Wilson Street
 ADDRESS

Site Lot Lot 3 over Lot 50

North Eveleigh

NSW

2015

Katie Fallowfield
 ASSESSOR NAME

20940
 ASSESSOR NUMBER

Built Ecology
 COMPANY

ASSESSOR SIGNATURE

Issued by a BUILDING THERMAL PERFORMANCE ASSESSOR accredited by the Association of Building Sustainability Assessors to provide NatHERS house energy ratings.



NatHERS Rated 5.5 STARS*

*www.nathers.gov.au



BUILDING ENERGY EFFICIENCY CERTIFICATE

1005142912
 CERTIFICATION NUMBER

20/03/2013
 DATE

56
 CLIMATE ZONE

BERS Professional - v4.2.110811 (BERS Professional)
 SOFTWARE

39.1 MJ/m² pa
 SIMULATED ENERGY CONSUMPTION - HEATING

14.4 MJ/m² pa
 SIMULATED ENERGY CONSUMPTION - COOLING

53.5 MJ/m² pa
 TOTAL SIMULATED ENERGY CONSUMPTION

49.6 m²
 FLOOR AREA - CONDITIONED

6.7 m²
 FLOOR AREA - UNCONDITIONED

56.3 m²
 FLOOR AREA - TOTAL

City West Housing Pty Ltd
 ISSUED TO

Unit 515 Wilson Street
 ADDRESS

Site Lot Lot 3 over Lot 50

North Eveleigh

NSW

2015

Katie Fallowfield
 ASSESSOR NAME

20940
 ASSESSOR NUMBER

Built Ecology
 COMPANY

ASSESSOR SIGNATURE

Issued by a BUILDING THERMAL PERFORMANCE ASSESSOR accredited by the Association of Building Sustainability Assessors to provide NatHERS house energy ratings.



NatHERS Rated 5.5 STARS*

*www.nathers.gov.au



BUILDING ENERGY EFFICIENCY CERTIFICATE

City West Housing Pty Ltd

ISSUED TO

Unit 601 Wilson Street

ADDRESS

Site Lot Lot 3 over Lot 50

North Eveleigh

NSW

2015

1005142920

CERTIFICATION NUMBER

20/03/2013

DATE

56

CLIMATE ZONE

BERS Professional - v4.2.110811 (BERS Professional)

SOFTWARE

33.1 MJ/m² pa

SIMULATED ENERGY CONSUMPTION - HEATING

23.3 MJ/m² pa

SIMULATED ENERGY CONSUMPTION - COOLING

56.4 MJ/m² pa

TOTAL SIMULATED ENERGY CONSUMPTION

66.0 m²

FLOOR AREA - CONDITIONED

6.8 m²

FLOOR AREA - UNCONDITIONED

72.8 m²

FLOOR AREA - TOTAL

Katie Fallowfield

ASSESSOR NAME

20940

ASSESSOR NUMBER

Built Ecology

COMPANY

ASSESSOR SIGNATURE

Issued by a BUILDING THERMAL PERFORMANCE ASSESSOR accredited by the Association of Building Sustainability Assessors to provide NatHERS house energy ratings.



NatHERS Rated 5.0 STARS*

*www.nathers.gov.au



BUILDING ENERGY EFFICIENCY CERTIFICATE

1005142938
 CERTIFICATION NUMBER

20/03/2013
 DATE

56
 CLIMATE ZONE

BERS Professional - v4.2.110811 (BERS Professional)
 SOFTWARE

20.4 MJ/m² pa
 SIMULATED ENERGY CONSUMPTION - HEATING

43.3 MJ/m² pa
 SIMULATED ENERGY CONSUMPTION - COOLING

63.7 MJ/m² pa
 TOTAL SIMULATED ENERGY CONSUMPTION

77.3 m²
 FLOOR AREA - CONDITIONED

4.8 m²
 FLOOR AREA - UNCONDITIONED

82.1 m²
 FLOOR AREA - TOTAL

City West Housing Pty Ltd
 ISSUED TO

Unit 602 Wilson Street
 ADDRESS

Site Lot Lot 3 over Lot 50

North Eveleigh

NSW

2015

Katie Fallowfield
 ASSESSOR NAME

20940
 ASSESSOR NUMBER

Built Ecology
 COMPANY

ASSESSOR SIGNATURE

Issued by a BUILDING THERMAL PERFORMANCE ASSESSOR accredited by the Association of Building Sustainability Assessors to provide NatHERS house energy ratings.



NatHERS Rated 6.5 STARS*

*www.nathers.gov.au



BUILDING ENERGY EFFICIENCY CERTIFICATE

1005143001

CERTIFICATION NUMBER

20/03/2013

DATE

56

CLIMATE ZONE

BERS Professional - v4.2.110811 (BERS Professional)

SOFTWARE

34.1 MJ/m² pa

SIMULATED ENERGY CONSUMPTION - HEATING

10.7 MJ/m² pa

SIMULATED ENERGY CONSUMPTION - COOLING

44.8 MJ/m² pa

TOTAL SIMULATED ENERGY CONSUMPTION

72.0 m²

FLOOR AREA - CONDITIONED

1.0 m²

FLOOR AREA - UNCONDITIONED

73.0 m²

FLOOR AREA - TOTAL

City West Housing Pty Ltd

ISSUED TO

Unit 603 Wilson Street

ADDRESS

Site Lot Lot 3 over Lot 50

North Eveleigh

NSW

2015

Katie Fallowfield

ASSESSOR NAME

20940

ASSESSOR NUMBER

Built Ecology

COMPANY

ASSESSOR SIGNATURE

Issued by a BUILDING THERMAL PERFORMANCE ASSESSOR accredited by the Association of Building Sustainability Assessors to provide NatHERS house energy ratings.

APPENDIX B – Sample Star Rating Report and Building Elements Report



NatHERS Certificate

New Dwelling



Project **NEAH_504**
 Location **EVELEIGH**
 Climate **climat56.TXT**

Run **1**
 PC **2015**
 3/4/2013

BERS Pro 4.2

Release/Version 110811
 CHENATH V2.13

Area Adjusted
5.5 Stars

Conditioned Area
 Unconditioned Area
 Adjusted Cooling
 Adjusted Heating
 Adjusted Total



Dwelling Details

D P Number *1001467*

Lot Number *Lot 3 over* **OR** House Number

Street Name *Wilson Street*
OR

Development Name *North Eveleigh Affordable Housing*

Suburb or Town *North Eveleigh*

State *NSW* Post Code *20*

Client Details

Name *Sam Galvin, City West Housing Pty Ltd*

Phone *+61 2 8584 7500* Fax *+61 2 9518 6600* Email *sam@citywesthousing.com.au*

Postal Address *2/56 Harris Street, Pyrmont NSW 2009*

Street Address *2/56 Harris Street, Pyrmont NSW 2009*

Assessor Details

Name *Katie Fallowfield* Assessor Number *20940*

Phone *+61 2 8907 0904* Fax *+61 2 9957 4127* Email *katie.fallowfield@wspgroup.com.au*

Postal Address *WSP Built Ecology Ground Floor, 41 McLaren Street, North Sydney, 2060*

Street Address *WSP Built Ecology Ground Floor, 41 McLaren Street, North Sydney, 2060*

Signed by the assessor _____ Date */ /*

*Tilted roof windows with blinds cannot be modelled using this version of BERS Pro
 All windows are modelled with Holland Blinds for Regulatory Purposes*

Building Element Details

Project NEAH_504 Run 1
EVELEIGH PC 2015 Lat -33.90 Long 151.20 Climate File climat56.TXT

Summary

Conditioned Area	42.8 m ²
Unconditioned Area	6.4 m ²
Total Floor Area	49.1 m ²
Total Glazed Area	8.6 m ²
Total External Solid door Area	2.2 m ²
Glass to Floor Area	17.6 %
Gross External Wall Area	89.1 m ²
Net External Wall Area	78.3 m ²

Window

8.6 m² GGG-05-001a Generics Uval 6.57 SHGC 0.74
Glass Single Glazed Clear
Frame Aluminium

External Wall

45.4 m² Autoclaved Aerated Concrete to neighbour No Insulation
21.9 m² Brick Veneer Bulk Insulation R 2.4
11.1 m² Concrete Block Bulk Insulation R 2.7

Internal Wall

24.3 m² Cavity Panel 70mm gap No Insulation

External Floor

6.4 m² Concrete Slab, Unit Below Ceramic Tiles 8mm No Insulation
22.1 m² Concrete Slab, Unit Below Carpet 10mm No Insulation
20.7 m² Concrete Slab, Unit Below 80/20 Carpet 10mm/Ceramic No Insulation

External Ceiling

49.1 m² Plasterboard No Insulation No roofspace cavity

Roof (Horizontal area)

49.1 m² Concrete Bulk Insulation, No Air Gap Above R 3.0 0° slope Hip roof

Partition Wall	Length	Height	AdjZ	Area	Type	Insulation		
						Concrete 0.30		
						Bulk Insulation, No Air Gap Above R3.00		
Wall P 5	3.90	2.70	2	7.17	Cavity Panel 70mm gap	No Insulation		
Door I(5, 1)	1.40	2.40	2	3.36	Hollow core door			
External Wall	Length	Height	Eaves	Orient	Area	Type		
						Abs		
						Insulation		
Wall E 1	5.30	2.70	0.00	262	14.31	Autoclaved Aerated Concrete to neighbour 0.30 No Insulation		
Wall E 2	3.90	2.70	2.40	352	1.89	Concrete Block 0.30		
						Bulk Insulation R2.70		
Window	Width	Height	Eaves	Orient	Area	Name	Glass	Frame
						Opening	Covering	
						Shading		
Window(2, 1)	3.20	2.70	2.40	352	8.64	GGG-05-001a	Single Glazed Clear	Aluminium
							33% Opening Sliding, Three Lites	Holland Blind
							No Shading	
Wall E 3	3.40	2.70	0.00	82	9.18	Concrete Block 0.30		
						Bulk Insulation R2.70		
Wall E 4	1.90	2.70	0.00	82	5.13	Autoclaved Aerated Concrete to neighbour 0.30	No Insulation	

Details

Zone 1 Bath Other Night-time Area on Level 1										
Air Movement	Screens	Seals	Chimney	Gas vent	Wall vents	Downlights	Ex Fans	Ceilin fans		
	Yes	Yes	No	No	0	0	0	No		
External Floor					Area	Covering	Type			
					6.38	Ceramic Tiles	8mm Concrete Slab, Unit Below	No Insulation		
Ceiling		Slope			Area	Type				
		0			6.38	Plasterboard	No Insulation			
						No roofspace cavity				
Roof		Slope	Shape		Type	Solar Abs				
		0	Hip		Concrete	0.30				
						Bulk Insulation, No Air Gap Above R3.00				
Partition Wall	Length	Height	AdjZ	Area	Type					
Wall P 2	2.20	2.70	2	5.94	Cavity Panel	70mm gap	No Insulation			
Wall P 3	2.90	2.70	2	6.10	Cavity Panel	70mm gap	No Insulation			
Door Int	Width	Height	AdjZ	Area	Type					
Door I(3, 1)	0.72	2.40	2	1.73	Hollow core door					
External Wall	Length	Height	Eaves	Orient	Area	Type	Abs			
						Insulation				
Wall E 1	2.90	2.70	0.00	262	7.83	Autoclaved Aerated Concrete	to neighbour	0.30	No Insulation	
Wall E 4	2.20	2.70	0.00	172	5.94	Brick Veneer	0.00			
						Bulk Insulation R2.40				

Zone 2 Bed 1 Sleeping Area on Level 1										
Air Movement	Screens	Seals	Chimney	Gas vent	Wall vents	Downlights	Ex Fans	Ceilin fans		
	Yes	Yes	No	No	0	0	0	No		
External Floor					Area	Covering	Type			
					22.09	Carpet 10mm	Concrete Slab, Unit Below	No Insulation		
Ceiling		Slope			Area	Type				
		0			22.09	Plasterboard	No Insulation			
						No roofspace cavity				
Roof		Slope	Shape		Type	Solar Abs				
		0	Hip		Concrete	0.30				
						Bulk Insulation, No Air Gap Above R3.00				
Partition Wall	Length	Height	AdjZ	Area	Type					
Wall P 1	2.20	2.70	1	5.94	Cavity Panel	70mm gap	No Insulation			
Wall P 3	3.90	2.70	3	7.17	Cavity Panel	70mm gap	No Insulation			
Door Int	Width	Height	AdjZ	Area	Type					
Door I(3, 1)	1.40	2.40	3	3.36	Hollow core door					
Wall P 7	2.90	2.70	1	6.10	Cavity Panel	70mm gap	No Insulation			
Door Int	Width	Height	AdjZ	Area	Type					
Door I(7, 1)	0.72	2.40	1	1.73	Hollow core door					
External Wall	Length	Height	Eaves	Orient	Area	Type	Abs			
						Insulation				
Wall E 2	4.40	2.70	0.00	262	11.88	Autoclaved Aerated Concrete	to neighbour	0.30	No Insulation	
Wall E 4	2.30	2.70	0.00	82	6.21	Autoclaved Aerated Concrete	to neighbour	0.30	No Insulation	
Wall E 5	5.00	2.70	0.00	82	11.34	Brick Veneer	0.00			
						Bulk Insulation R2.40				
Door Ext	Width	Height	Eaves	Orient	Area	Type				
Door E(5, 1)	0.90	2.40	0.00	82	2.16	Solid timber door				
Wall E 6	1.70	2.70	0.00	172	4.59	Brick Veneer	0.00			
						Bulk Insulation R2.40				

Zone 3 Living + Kitche Living/Kitchen Area on Level 1										
Air Movement	Screens	Seals	Chimney	Gas vent	Wall vents	Downlights	Ex Fans	Ceilin fans		
	Yes	Yes	No	No	0	0	0	No		
External Floor					Area	Covering	Type			
					20.67	80/20 Carpet 10mm/Ceramic	Concrete Slab, Unit Below	No Insulation		
Ceiling		Slope			Area	Type				
		0			20.67	Plasterboard	No Insulation			
						No roofspace cavity				
Roof		Slope	Shape		Type	Solar Abs				

APPENDIX C – BASIX CERTIFICATE

BASIX[®]Certificate

Building Sustainability Index www.basix.nsw.gov.au

Multi Dwelling

Certificate number: 469854M

This certificate confirms that the proposed development will meet the NSW government's requirements for sustainability, if it is built in accordance with the commitments set out below. Terms used in this certificate, or in the commitments, have the meaning given by the document entitled "BASIX Definitions" dated 29/06/2009 published by the Department of Planning. This document is available at www.basix.nsw.gov.au

Director-General

Date of issue: Thursday, 28 March 2013

To be valid, this certificate must be lodged within 3 months of the date of issue.



Project summary		
Project name	North Eveleigh Affordable Housing	
Street address	Wilson Street Street North Eveleigh 2015	
Local Government Area	Sydney City Council	
Plan type and plan number	deposited 1001467	
Lot no.	3, 50	
Section no.	-	
No. of residential flat buildings	1	
No. of units in residential flat buildings	88	
No. of multi-dwelling houses	0	
No. of single dwelling houses	0	
Project score		
Water	✓ 43	Target 40
Thermal Comfort	✓ Pass	Target Pass
Energy	✓ 31	Target 20

Certificate Prepared by

Name / Company Name: WSP

ABN (if applicable): 47 005 113 468

Description of project

Project address	
Project name	North Eveleigh Affordable Housing
Street address	Wilson Street Street North Eveleigh 2015
Local Government Area	Sydney City Council
Plan type and plan number	deposited 1001467
Lot no.	3, 50
Section no.	-
Project type	
No. of residential flat buildings	1
No. of units in residential flat buildings	88
No. of multi-dwelling houses	0
No. of single dwelling houses	0
Site details	
Site area (m ²)	2562
Roof area (m ²)	1240
Non-residential floor area (m ²)	0
Residential car spaces	39
Non-residential car spaces	0

Common area landscape		
Common area lawn (m ²)	150	
Common area garden (m ²)	426.5	
Area of indigenous or low water use species (m ²)	280	
Assessor details		
Assessor number	20940	
Certificate number	4254025434	
Climate zone	56	
Project score		
Water	✓ 43	Target 40
Thermal Comfort	✓ Pass	Target Pass
Energy	✓ 31	Target 20

Description of project

The tables below describe the dwellings and common areas within the project

Residential flat buildings - North Eveleigh Railyards, 88 dwellings, 6 storeys above ground

Dwelling no.	No. of bedrooms	Conditioned floor area (m ²)	Unconditioned floor area (m ²)	Area of garden & lawn (m ²)	Indigenous species (min area m ²)
101	2	66.0	6.8	0	0
105	1	42.2	5.5	0	0
109	1	42.3	8.1	0	0
113	2	68.4	6.2	0	0
201	2	65.8	6.8	0	0
205	1	42.2	5.5	0	0
209	1	42.3	8.1	0	0
213	2	68.4	6.2	0	0
301	2	65.8	6.8	0	0
305	1	42.2	5.5	0	0
309	1	42.3	8.1	0	0
313	2	68.4	6.2	0	0
401	2	66.2	6.8	0	0
405	1	42.2	5.5	0	0
409	1	42.3	8.1	0	0
413	2	68.4	6.2	0	0
501	2	65.8	6.8	0	0
505	1	42.2	5.5	0	0

Dwelling no.	No. of bedrooms	Conditioned floor area (m ²)	Unconditioned floor area (m ²)	Area of garden & lawn (m ²)	Indigenous species (min area m ²)
102	2	76.7	4.8	0	0
106	1	42.3	8.1	0	0
110	1	42.3	8.1	0	0
114	1	46.0	6.7	0	0
202	2	76.7	4.8	0	0
206	1	42.3	8.1	0	0
210	1	42.3	8.1	0	0
214	1	46.0	6.7	0	0
302	2	76.7	4.8	0	0
306	1	42.3	8.1	0	0
310	1	42.3	8.1	0	0
314	1	46.0	6.7	0	0
402	2	77.5	4.8	0	0
406	1	42.3	8.1	0	0
410	1	42.3	8.1	0	0
414	1	46.0	6.7	0	0
502	2	76.7	4.8	0	0
506	2	83.6	11.4	0	0

Dwelling no.	No. of bedrooms	Conditioned floor area (m ²)	Unconditioned floor area (m ²)	Area of garden & lawn (m ²)	Indigenous species (min area m ²)
103	2	64.1	6.4	0	0
107	1	42.3	8.1	0	0
111	1	42.3	8.1	0	0
115	1	46.1	6.7	0	0
203	2	64.1	6.4	0	0
207	1	42.3	8.1	0	0
211	1	42.3	8.1	0	0
215	1	46.1	6.7	0	0
303	2	64.1	6.4	0	0
307	1	42.3	8.1	0	0
311	1	42.3	8.1	0	0
315	1	46.1	6.7	0	0
403	2	64.1	6.4	0	0
407	1	42.3	8.1	0	0
411	1	42.3	8.1	0	0
415	1	46.1	6.7	0	0
503	2	64.1	6.4	0	0
507	2	83.6	2.0	0	0

Dwelling no.	No. of bedrooms	Conditioned floor area (m ²)	Unconditioned floor area (m ²)	Area of garden & lawn (m ²)	Indigenous species (min area m ²)
104	1	43.5	6.4	0	0
108	1	42.3	8.1	0	0
112	2	66.7	6.4	0	0
116	1	47.6	4.8	0	0
204	1	43.5	6.4	0	0
208	1	42.3	8.1	0	0
212	2	66.7	6.4	0	0
216	1	47.6	4.8	0	0
304	1	43.5	6.4	0	0
308	1	42.3	8.1	0	0
312	2	66.7	6.4	0	0
316	1	47.6	4.8	0	0
404	1	43.5	6.4	0	0
408	1	42.3	8.1	0	0
412	2	66.7	6.4	0	0
416	2	86.0	4.3	0	0
504	1	43.5	6.4	0	0
508	2	83.6	11.4	0	0

Dwelling no.	No. of bedrooms	Conditioned floor area (m ²)	Unconditioned floor area (m ²)	Area of garden & lawn (m ²)	Indigenous species (min area m ²)
509	2	83.6	2.0	0	0
513	2	68.4	6.2	0	0
602	2	76.7	4.8	0	0
G03	3	81.5	4.5	4	0

Dwelling no.	No. of bedrooms	Conditioned floor area (m ²)	Unconditioned floor area (m ²)	Area of garden & lawn (m ²)	Indigenous species (min area m ²)
510	2	83.6	11.4	0	0
514	1	46.0	6.7	0	0
603	2	66.7	1.0	0	0
G04	3	81.5	4.5	4	0

Dwelling no.	No. of bedrooms	Conditioned floor area (m ²)	Unconditioned floor area (m ²)	Area of garden & lawn (m ²)	Indigenous species (min area m ²)
511	2	83.6	2.0	0	0
515	1	46.1	6.7	0	0
G01	3	81.3	6.6	4	0
G05	2	66.7	6.4	0	0

Dwelling no.	No. of bedrooms	Conditioned floor area (m ²)	Unconditioned floor area (m ²)	Area of garden & lawn (m ²)	Indigenous species (min area m ²)
512	2	66.7	6.4	0	0
601	2	65.8	6.8	0	0
G02	3	81.5	4.5	4	0
G06	3	92.6	9.4	0	0

Description of project

The tables below describe the dwellings and common areas within the project

Common areas of unit building - North Eveleigh Railyards

Common area	Floor area (m ²)	Common area	Floor area (m ²)	Common area	Floor area (m ²)
Basement Car Park	1435	Lift car (No. 1)	-	Lift car (No. 2)	-
Lift car (No. 3)	-	Basement Switch Room and Comms Room	31.6	Basement E/A Fan Room	18
Ground Floor Garbage Room	31.6	Ground Floor Recyclable Waste Room	22.8	G/F Water Meter and Hydrant Pump Rooms	16.8
Ground Floor Gas Meter Room	10.2	Ground Floor Post Room	7.8	Ground Floor Plant Room (East)	12.3
Ground Floor Small Room (East)	5.2	Ground Floor Plant (West)	15.5	Foyer, Lobbies and Galleries	1529.9

Schedule of BASIX commitments

1. Commitments for Residential flat buildings - North Eveleigh Railyards

(a) Dwellings

- (i) Water
- (ii) Energy
- (iii) Thermal Comfort

(b) Common areas and central systems/facilities

- (i) Water
- (ii) Energy

2. Commitments for multi-dwelling houses

3. Commitments for single dwelling houses

4. Commitments for common areas and central systems/facilities for the development (non-building specific)

- (i) Water
- (ii) Energy

Schedule of BASIX commitments

The commitments set out below regulate how the proposed development is to be carried out. It is a condition of any development consent granted, or complying development certificate issued, for the proposed development, that BASIX commitments be complied with.

1. Commitments for Residential flat buildings - North Eveleigh Railyards

(a) Dwellings

(i) Water	Show on DA plans	Show on CC/CDC plans & specs	Certifier check
(a) The applicant must comply with the commitments listed below in carrying out the development of a dwelling listed in a table below.			
(b) The applicant must plant indigenous or low water use species of vegetation throughout the area of land specified for the dwelling in the "Indigenous species" column of the table below, as private landscaping for that dwelling. (This area of indigenous vegetation is to be contained within the "Area of garden and lawn" for the dwelling specified in the "Description of Project" table).	✓	✓	
(c) If a rating is specified in the table below for a fixture or appliance to be installed in the dwelling, the applicant must ensure that each such fixture and appliance meets the rating specified for it.		✓	✓
(d) The applicant must install an on demand hot water recirculation system which regulates all hot water use throughout the dwelling, where indicated for a dwelling in the "HW recirculation or diversion" column of the table below.		✓	✓
(e) The applicant must install: <ul style="list-style-type: none"> (aa) a hot water diversion system to all showers, kitchen sinks and all basins in the dwelling, where indicated for a dwelling in the "HW recirculation or diversion" column of the table below; and (bb) a separate diversion tank (or tanks) connected to the hot water diversion systems of at least 100 litres. The applicant must connect the hot water diversion tank to all toilets in the dwelling. 		✓	✓
(e) The applicant must not install a private swimming pool or spa for the dwelling, with a volume exceeding that specified for it in the table below.	✓	✓	
(f) If specified in the table, that pool or spa (or both) must have a pool cover or shading (or both).		✓	
(g) The pool or spa must be located as specified in the table.	✓	✓	
(h) The applicant must install, for the dwelling, each alternative water supply system, with the specified size, listed for that dwelling in the table below. Each system must be configured to collect run-off from the areas specified (excluding any area which supplies any other alternative water supply system), and to divert overflow as specified. Each system must be connected as specified.	✓	✓	✓

Dwelling no.	Fixtures					Appliances		Individual pool				Individual spa		
	All shower-heads	All toilet flushing systems	All kitchen taps	All bathroom taps	HW recirculation or diversion	All clothes washers	All dish-washers	Volume (max volume)	Pool cover	Pool location	Pool shaded	Volume (max volume)	Spa cover	Spa shaded
All dwellings	3 star (> 7.5 but <= 9 L/min)	4 star	3 star	5 star	no	-	-	-	-	-	-	-	-	-

Dwelling no.	Alternative water source							
	Alternative water supply systems	Size	Configuration	Landscape connection	Toilet connection (s)	Laundry connection	Pool top-up	Spa top-up
All dwellings	central water tank (no. 1)	See central systems	See central systems	no	yes	yes	no	no
None	-	-	-	-	-	-	-	-

(ii) Energy	Show on DA plans	Show on CC/CDC plans & specs	Certifier check
(a) The applicant must comply with the commitments listed below in carrying out the development of a dwelling listed in a table below.			
(b) The applicant must install each hot water system specified for the dwelling in the table below, so that the dwelling's hot water is supplied by that system. If the table specifies a central hot water system for the dwelling, then the applicant must connect that central system to the dwelling, so that the dwelling's hot water is supplied by that central system.	✓	✓	✓
(c) The applicant must install, in each bathroom, kitchen and laundry of the dwelling, the ventilation system specified for that room in the table below. Each such ventilation system must have the operation control specified for it in the table.		✓	✓
(d) The applicant must install the cooling and heating system/s specified for the dwelling under the "Living areas" and "Bedroom areas" headings of the "Cooling" and "Heating" columns in the table below, in/for at least 1 living/bedroom area of the dwelling. If no cooling or heating system is specified in the table for "Living areas" or "Bedroom areas", then no systems may be installed in any such areas. If the term "zoned" is specified beside an air conditioning system, then the system must provide for day/night zoning between living areas and bedrooms.		✓	✓
(e) This commitment applies to each room or area of the dwelling which is referred to in a heading to the "Artificial lighting" column of the table below (but only to the extent specified for that room or area). The applicant must ensure that the "primary type of artificial lighting" for each such room in the dwelling is fluorescent lighting or light emitting diode (LED) lighting. If the term "dedicated" is specified for a particular room or area, then the light fittings in that room or area must only be capable of being used for fluorescent lighting or light emitting diode (LED) lighting.		✓	✓

(ii) Energy	Show on DA plans	Show on CC/CDC plans & specs	Certifier check
(f) This commitment applies to each room or area of the dwelling which is referred to in a heading to the "Natural lighting" column of the table below (but only to the extent specified for that room or area). The applicant must ensure that each such room or area is fitted with a window and/or skylight.	✓	✓	✓
(g) This commitment applies if the applicant installs a water heating system for the dwelling's pool or spa. The applicant must: (aa) install the system specified for the pool in the "Individual Pool" column of the table below (or alternatively must not install any system for the pool). If specified, the applicant must install a timer, to control the pool's pump; and (bb) install the system specified for the spa in the "Individual Spa" column of the table below (or alternatively must not install any system for the spa). If specified, the applicant must install a timer to control the spa's pump.		✓ ✓	
(h) The applicant must install in the dwelling: (aa) the kitchen cook-top and oven specified for that dwelling in the "Appliances & other efficiency measures" column of the table below; (bb) each appliance for which a rating is specified for that dwelling in the "Appliances & other efficiency measures" column of the table, and ensure that the appliance has that minimum rating; and (cc) any clothes drying line specified for the dwelling in the "Appliances & other efficiency measures" column of the table.		✓ ✓ ✓	✓
(i) If specified in the table, the applicant must carry out the development so that each refrigerator space in the dwelling is "well ventilated".		✓	

	Hot water	Bathroom ventilation system		Kitchen ventilation system		Laundry ventilation system	
Dwelling no.	Hot water system	Each bathroom	Operation control	Each kitchen	Operation control	Each laundry	Operation control
All dwellings	central hot water system 1	individual fan, ducted to façade or roof	manual on / timer off	individual fan, ducted to façade or roof	manual on / timer off	individual fan, ducted to façade or roof	manual on / timer off

	Cooling		Heating		Artificial lighting						Natural lighting	
Dwelling no.	living areas	bedroom areas	living areas	bedroom areas	No. of bedrooms &/or study	No. of living &/or dining rooms	Each kitchen	All bathrooms/toilets	Each laundry	All hallways	No. of bathrooms &/or toilets	Main kitchen
102	-	-	-	-	2 (dedicated)	1 (dedicated)	yes (dedicated)	yes (dedicated)	yes (dedicated)	yes (dedicated)	1	no

Dwelling no.	Cooling		Heating		Artificial lighting						Natural lighting	
	living areas	bedroom areas	living areas	bedroom areas	No. of bedrooms &/or study	No. of living &/or dining rooms	Each kitchen	All bathrooms/toilets	Each laundry	All hallways	No. of bathrooms &/or toilets	Main kitchen
101, 103	-	-	-	-	2 (dedicated)	1 (dedicated)	yes (dedicated)	yes (dedicated)	yes (dedicated)	yes (dedicated)	0	no
104, 105	-	-	-	-	1 (dedicated)	1 (dedicated)	yes (dedicated)	yes (dedicated)	yes (dedicated)	yes (dedicated)	0	yes
116, 216	-	-	-	-	1 (dedicated)	1 (dedicated)	yes (dedicated)	yes (dedicated)	yes (dedicated)	yes (dedicated)	0	yes
106, 107, 108, 109, 110	-	-	-	-	1 (dedicated)	1 (dedicated)	yes (dedicated)	yes (dedicated)	yes (dedicated)	yes (dedicated)	0	no
115, 215, 315, 415, 515	-	-	-	-	1 (dedicated)	1 (dedicated)	yes (dedicated)	yes (dedicated)	yes (dedicated)	yes (dedicated)	1	no
202, 302, 402, 502, 602	-	-	-	-	2 (dedicated)	1 (dedicated)	yes (dedicated)	yes (dedicated)	yes (dedicated)	yes (dedicated)	1	no
G01, G02, G03, G04, G06	-	-	-	-	3 (dedicated)	1 (dedicated)	yes (dedicated)	yes (dedicated)	yes (dedicated)	yes (dedicated)	0	no

Dwelling no.	Cooling		Heating		Artificial lighting					Natural lighting		
	living areas	bedroom areas	living areas	bedroom areas	No. of bedrooms &/or study	No. of living &/or dining rooms	Each kitchen	All bathrooms/toilets	Each laundry	All hallways	No. of bathrooms &/or toilets	Main kitchen
112, 113, 201, 203, 212, 213, 301, 303, 312, 313, 401, 403, 412, 413, 501, 503, 506, 507, 508, 509, 510, 511, 512, 513, 601, 603, G05	-	-	-	-	2 (dedicated)	1 (dedicated)	yes (dedicated)	yes (dedicated)	yes (dedicated)	yes (dedicated)	0	no

Dwelling no.	Cooling		Heating		Artificial lighting					Natural lighting		
	living areas	bedroom areas	living areas	bedroom areas	No. of bedrooms &/or study	No. of living &/or dining rooms	Each kitchen	All bathrooms/toilets	Each laundry	All hallways	No. of bathrooms &/or toilets	Main kitchen
111, 114, 204, 205, 206, 207, 208, 209, 210, 211, 214, 304, 305, 306, 307, 308, 309, 310, 311, 314, 316, 404, 405, 406, 407, 408, 409, 410, 411, 414, 416, 504, 505, 514	-	-	-	-	1 (dedicated)	1 (dedicated)	yes (dedicated)	yes (dedicated)	yes (dedicated)	yes (dedicated)	0	no

Dwelling no.	Individual pool		Individual spa		Appliances & other efficiency measures							
	Pool heating system	Timer	Spa heating system	Timer	Kitchen cooktop/oven	Refrigerator	Well ventilated fridge space	Dishwasher	Clothes washer	Clothes dryer	Indoor or sheltered clothes drying line	Private outdoor or unsheltered clothes drying line
All dwellings	-	-	-	-	gas cooktop & electric oven	-	yes	-	-	-	yes	no

(iii) Thermal Comfort	Show on DA plans	Show on CC/CDC plans & specs	Certifier check
(a) The applicant must attach the certificate referred to under "Assessor details" on the front page of this BASIX certificate (the "Assessor Certificate") to the development application and construction certificate application for the proposed development (or, if the applicant is applying for a complying development certificate for the proposed development, to that application). The applicant must also attach the Assessor Certificate to the application for a final occupation certificate for the proposed development.			
(b) The Assessor Certificate must have been issued by an Accredited Assessor in accordance with the Thermal Comfort Protocol.			
(c) The details of the proposed development on the Assessor Certificate must be consistent with the details shown in this BASIX Certificate, including the details shown in the "Thermal Loads" table below.			
(d) The applicant must show on the plans accompanying the development application for the proposed development, all matters which the Thermal Comfort Protocol requires to be shown on those plans. Those plans must bear a stamp of endorsement from the Accredited Assessor, to certify that this is the case.			
(e) The applicant must show on the plans accompanying the application for a construction certificate (or complying development certificate, if applicable), all thermal performance specifications set out in the Assessor Certificate, and all aspects of the proposed development which were used to calculate those specifications.			
(f) The applicant must construct the development in accordance with all thermal performance specifications set out in the Assessor Certificate, and in accordance with those aspects of the development application or application for a complying development certificate which were used to calculate those specifications.		✓	✓
(g) Where there is an in-slab heating or cooling system, the applicant must: (aa) Install insulation with an R-value of not less than 1.0 around the vertical edges of the perimeter of the slab; or (bb) On a suspended floor, install insulation with an R-value of not less than 1.0 underneath the slab and around the vertical edges of the perimeter of the slab.	✓	✓	✓
(h) The applicant must construct the floors and walls of the development in accordance with the specifications listed in the table below.	✓	✓	✓

Dwelling no.	Thermal loads	
	Area adjusted heating load (in mJ/m ² /yr)	Area adjusted cooling load (in mJ/m ² /yr)
416	41.2	23.7
504	25.2	31.4
505	23.6	22.8
511	44.3	20
512	23.9	8.3
513	21.1	12.1
514	29.8	13.8
515	39.1	14.4
601	33.1	23.3
602	20.4	43.3
603	34.1	10.7
G01	19.2	16.5
G04	29.1	16.8
G05	14.2	12.9
G06	8.8	17.4
507, 509	38.3	19.6
G02, G03	26.2	17
116, 216, 316	46.8	35.9
506, 508, 510	38.8	20.9
104, 204, 304, 404	19.6	30.1
105, 205, 305, 405	10.8	27.3
111, 211, 311, 411	43.8	23
112, 212, 312, 412	18	10.5
113, 213, 313, 413	11.9	16.2
114, 214, 314, 414	17	30.4
115, 215, 315, 415	21.2	30.9
101, 201, 301, 401, 501	22.1	41.6

	Thermal loads	
Dwelling no.	Area adjusted heating load (in mJ/m ² /yr)	Area adjusted cooling load (in mJ/m ² /yr)
102, 202, 302, 402, 502	12.2	46.6
103, 203, 303, 403, 503	19.1	11.6
107, 109, 207, 209, 307, 309, 407, 409	31.1	21.3
All other dwellings	27	25.7

(b) Common areas and central systems/facilities

(i) Water	Show on DA plans	Show on CC/CDC plans & specs	Certifier check
(a) If, in carrying out the development, the applicant installs a showerhead, toilet, tap or clothes washer into a common area, then that item must meet the specifications listed for it in the table.		✓	✓
(b) The applicant must install (or ensure that the development is serviced by) the alternative water supply system(s) specified in the "Central systems" column of the table below. In each case, the system must be sized, be configured, and be connected, as specified in the table.	✓	✓	✓
(c) A swimming pool or spa listed in the table must not have a volume (in kLs) greater than that specified for the pool or spa in the table.	✓	✓	
(d) A pool or spa listed in the table must have a cover or shading if specified for the pool or spa in the table.		✓	
(e) The applicant must install each fire sprinkler system listed in the table so that the system is configured as specified in the table.		✓	✓
(f) The applicant must ensure that the central cooling system for a cooling tower is configured as specified in the table.		✓	✓

Common area	Showerheads rating	Toilets rating	Taps rating	Clothes washers rating
All common areas	no common facility	no common facility	no common facility	no common laundry facility

Central systems	Size	Configuration	Connection (to allow for...)
Central water tank - rainwater or stormwater (No. 1)	30000	To collect run-off from at least: - 1240 square metres of roof area of buildings in the development - 0 square metres of impervious area in the development - 0 square metres of garden/lawn area in the development - 0 square metres of planter box area in the development (excluding, in each case, any area which drains to, or supplies, any other alternative water supply system).	- irrigation of 576.5 square metres of common landscaped area on the site - car washing in 0 car washing bays on the site

(ii) Energy	Show on DA plans	Show on CC/CDC plans & specs	Certifier check
(a) If, in carrying out the development, the applicant installs a ventilation system to service a common area specified in the table below, then that ventilation system must be of the type specified for that common area, and must meet the efficiency measure specified.		✓	✓
(b) In carrying out the development, the applicant must install, as the "primary type of artificial lighting" for each common area specified in the table below, the lighting specified for that common area. This lighting must meet the efficiency measure specified. The applicant must also install a centralised lighting control system or Building Management System (BMS) for the common area, where specified.		✓	✓
(c) The applicant must install the systems and fixtures specified in the "Central energy systems" column of the table below. In each case, the system or fixture must be of the type, and meet the specifications, listed for it in the table.	✓	✓	✓

Common area	Common area ventilation system		Common area lighting		
	Ventilation system type	Ventilation efficiency measure	Primary type of artificial lighting	Lighting efficiency measure	Lighting control system/BMS
Basement Car Park	ventilation exhaust only	carbon monoxide monitor + VSD fan	fluorescent	time clock and motion sensors	No
Lift car (No. 1)	-	-	fluorescent	connected to lift call button	No
Lift car (No. 2)	-	-	fluorescent	connected to lift call button	No
Lift car (No. 3)	-	-	fluorescent	connected to lift call button	No
Basement Switch Room and Comms Room	ventilation (supply + exhaust)	none ie. continuous	fluorescent	manual on / manual off	No
Basement E/A Fan Room	no mechanical ventilation	-	fluorescent	manual on / manual off	No
Ground Floor Garbage Room	ventilation exhaust only	-	fluorescent	motion sensors	No
Ground Floor Recyclable Waste Room	ventilation exhaust only	none ie. continuous	fluorescent	motion sensors	No
G/F Water Meter and Hydrant Pump Rooms	no mechanical ventilation	-	fluorescent	manual on / manual off	No
Ground Floor Gas Meter Room	no mechanical ventilation	-	fluorescent	manual on / manual off	No
Ground Floor Post Room	ventilation (supply + exhaust)	interlocked to light	fluorescent	motion sensors	No

Common area	Common area ventilation system		Common area lighting		
	Ventilation system type	Ventilation efficiency measure	Primary type of artificial lighting	Lighting efficiency measure	Lighting control system/BMS
Ground Floor Plant Room (East)	no mechanical ventilation	-	fluorescent	manual on / manual off	No
Ground Floor Small Room (East)	no mechanical ventilation	-	fluorescent	motion sensors	No
Ground Floor Plant (West)	no mechanical ventilation	-	fluorescent	manual on / manual off	No
Foyer, Lobbies and Galleries	no mechanical ventilation	-	fluorescent	time clocks	No

Central energy systems	Type	Specification
Central hot water system (No. 1)	gas-fired boiler	Piping insulation (ringmain & supply risers): (a) Piping external to building: R0.75 (~32 mm); (b) Piping internal to building: R0.75 (~32 mm)
Lift (No. 1)	gearless traction with V V V F motor	Number of levels (including basement): 8
Lift (No. 2)	gearless traction with V V V F motor	Number of levels (including basement): 8
Lift (No. 3)	gearless traction with V V V F motor	Number of levels (including basement): 7

4. Commitments for common areas and central systems/facilities for the development (non-building specific)

(b) Common areas and central systems/facilities

(i) Water	Show on DA plans	Show on CC/CDC plans & specs	Certifier check
(a) If, in carrying out the development, the applicant installs a showerhead, toilet, tap or clothes washer into a common area, then that item must meet the specifications listed for it in the table.		✓	✓
(b) The applicant must install (or ensure that the development is serviced by) the alternative water supply system(s) specified in the "Central systems" column of the table below. In each case, the system must be sized, be configured, and be connected, as specified in the table.	✓	✓	✓
(c) A swimming pool or spa listed in the table must not have a volume (in kLs) greater than that specified for the pool or spa in the table.	✓	✓	
(d) A pool or spa listed in the table must have a cover or shading if specified for the pool or spa in the table.		✓	
(e) The applicant must install each fire sprinkler system listed in the table so that the system is configured as specified in the table.		✓	✓
(f) The applicant must ensure that the central cooling system for a cooling tower is configured as specified in the table.		✓	✓

Common area	Showerheads rating	Toilets rating	Taps rating	Clothes washers rating
All common areas	no common facility	no common facility	no common facility	no common laundry facility

(ii) Energy	Show on DA plans	Show on CC/CDC plans & specs	Certifier check
(a) If, in carrying out the development, the applicant installs a ventilation system to service a common area specified in the table below, then that ventilation system must be of the type specified for that common area, and must meet the efficiency measure specified.		✓	✓
(b) In carrying out the development, the applicant must install, as the "primary type of artificial lighting" for each common area specified in the table below, the lighting specified for that common area. This lighting must meet the efficiency measure specified. The applicant must also install a centralised lighting control system or Building Management System (BMS) for the common area, where specified.		✓	✓
(c) The applicant must install the systems and fixtures specified in the "Central energy systems" column of the table below. In each case, the system or fixture must be of the type, and meet the specifications, listed for it in the table.	✓	✓	✓

Notes

1. In these commitments, "applicant" means the person carrying out the development.
2. The applicant must identify each dwelling, building and common area listed in this certificate, on the plans accompanying any development application, and on the plans and specifications accompanying the application for a construction certificate / complying development certificate, for the proposed development, using the same identifying letter or reference as is given to that dwelling, building or common area in this certificate.
3. This note applies if the proposed development involves the erection of a building for both residential and non-residential purposes (or the change of use of a building for both residential and non-residential purposes). Commitments in this certificate which are specified to apply to a "common area" of a building or the development, apply only to that part of the building or development to be used for residential purposes.
4. If this certificate lists a central system as a commitment for a dwelling or building, and that system will also service any other dwelling or building within the development, then that system need only be installed once (even if it is separately listed as a commitment for that other dwelling or building).
5. If a star or other rating is specified in a commitment, this is a minimum rating.
6. All alternative water systems to be installed under these commitments (if any), must be installed in accordance with the requirements of all applicable regulatory authorities. NOTE: NSW Health does not recommend that stormwater, recycled water or private dam water be used to irrigate edible plants which are consumed raw, or that rainwater be used for human consumption in areas with potable water supply.

Legend

1. Commitments identified with a "✓" in the "Show on DA plans" column must be shown on the plans accompanying the development application for the proposed development (if a development application is to be lodged for the proposed development).
2. Commitments identified with a "✓" in the "Show on CC/CDC plans and specs" column must be shown in the plans and specifications accompanying the application for a construction certificate / complying development certificate for the proposed development.
3. Commitments identified with a "✓" in the "Certifier check" column must be certified by a certifying authority as having been fulfilled. (Note: a certifying authority must not issue an occupation certificate (either interim or final) for a building listed in this certificate, or for any part of such a building, unless it is satisfied that each of the commitments whose fulfilment it is required to monitor in relation to the building or part, has been fulfilled).

APPENDIX D – STAMPED PLANS



architectus Sydney 2012

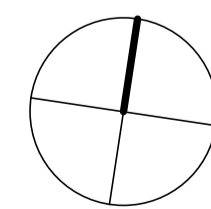
Architectus Sydney Pty Ltd is the owner of the copyright subsisting in these drawings, plans, designs and specifications. They must not be used, reproduced or copied, in whole or in part, nor may the information, ideas and concepts therein contained (which are confidential to Architectus Sydney Pty Ltd) be disclosed to any person without the prior written consent of that company.

0 10 20 30 40 50 60 70 80 90 100 mm
Do not scale drawings. Verify all dimensions on site



issue	amendment	date
A	DA Issue	27/03/13

issue	amendment	date



- Studio Bed
- 1 Bed
- 2 Bed
- 3 Bed
- Private Open Space
- Vertical Circulation
- Decking
- Foyer
- Gallery
- Planting
- Services

architectus™

Architectus Sydney
Level 3 341 George Street
Sydney NSW 2000
T (61 2) 8252 8400
F (61 2) 8252 8600
sydney@architectus.com.au

checked: Checker scale: 1 : 100 @ A1
drawn: Author project no: 120325

project: North Eveleigh Affordable Housing

drawing: Ground Floor

drawing no. DA01-002 issue A

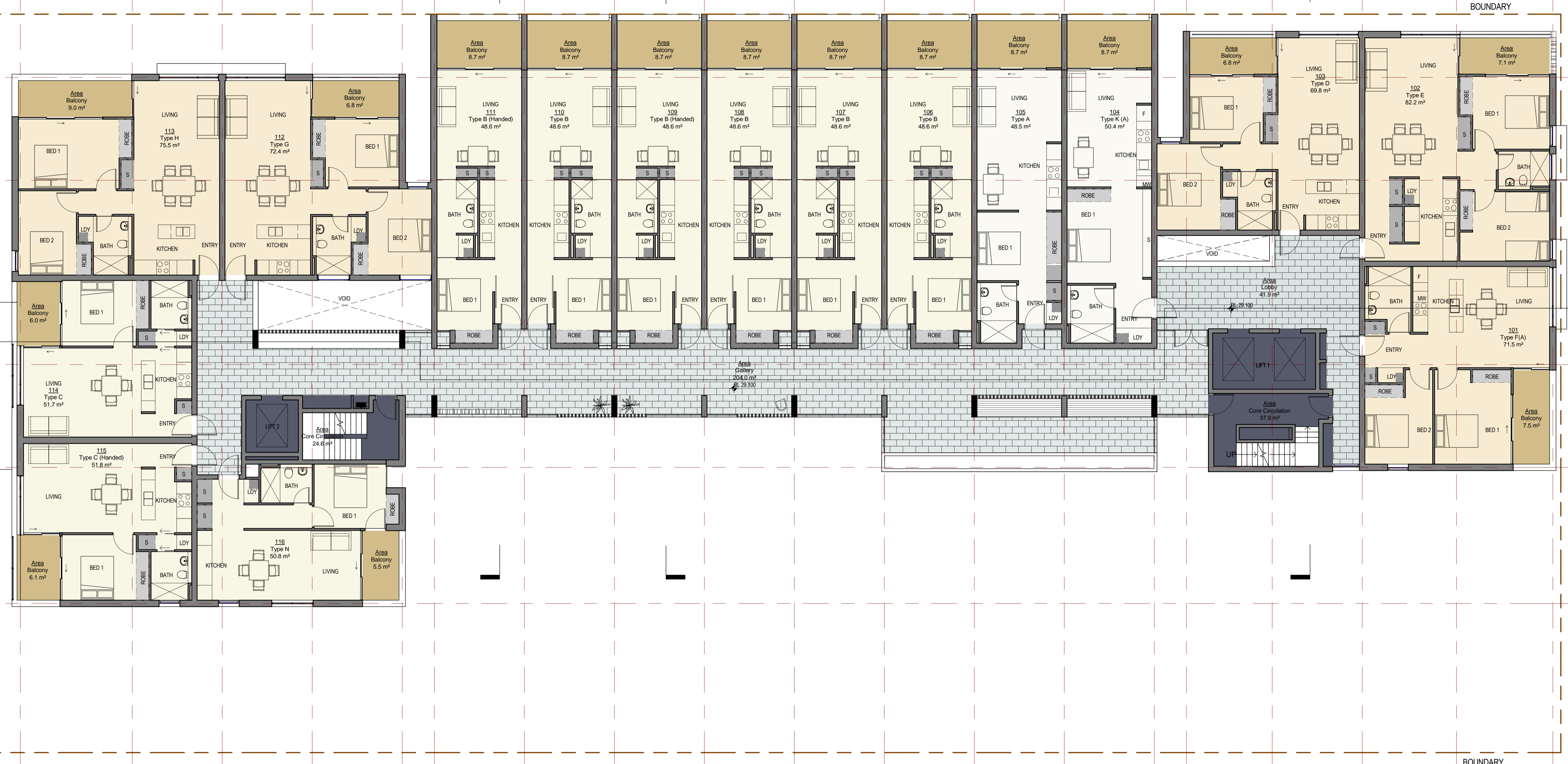
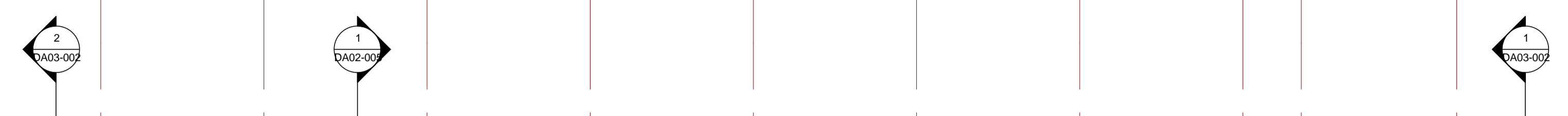
25/03/2013 3:43:20 PM

1 2 3 4 5 6 7 8 9 10 11 12 13 14 15 16 17 18 19

5225 4200 4200 4200 1500 4200 4200 4200 4200 4200 4200 4200 4200 1500 4000 4200 4400 4500

A
B
C
D
E

4800
8600
4500
6350



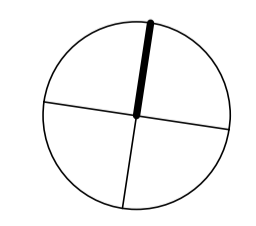
architectus Sydney 2012

Architectus Sydney Pty Ltd is the owner of the copyright subsisting in these drawings, plans, designs and specifications. They must not be used, reproduced or copied, in whole or in part, nor may the information, ideas and concepts therein contained (which are confidential to Architectus Sydney Pty Ltd) be disclosed to any person without the prior written consent of that company.

0 10 20 30 40 50 mm

Do not scale drawings. Verify all dimensions on site

issue	amendment	date	issue	amendment	date
A	DA Issue	27/03/13			



- Studio Bed
- 1 Bed
- 2 Bed
- 3 Bed
- Private Open Space
- Vertical Circulation
- Foyer
- Gallery
- Services

architectus™

Architectus Sydney
 Level 3 341 George Street
 Sydney NSW 2000
 T (61 2) 8252 8400
 F (61 2) 8252 8600
 sydney@architectus.com.au

Sydney
 Melbourne
 Auckland
 Brisbane
 Shanghai

ABN 11 098 489 448

checked: [] Checker: [] scale: 1 : 100 @ A1
 drawn: [] Author: [] project no: 120325

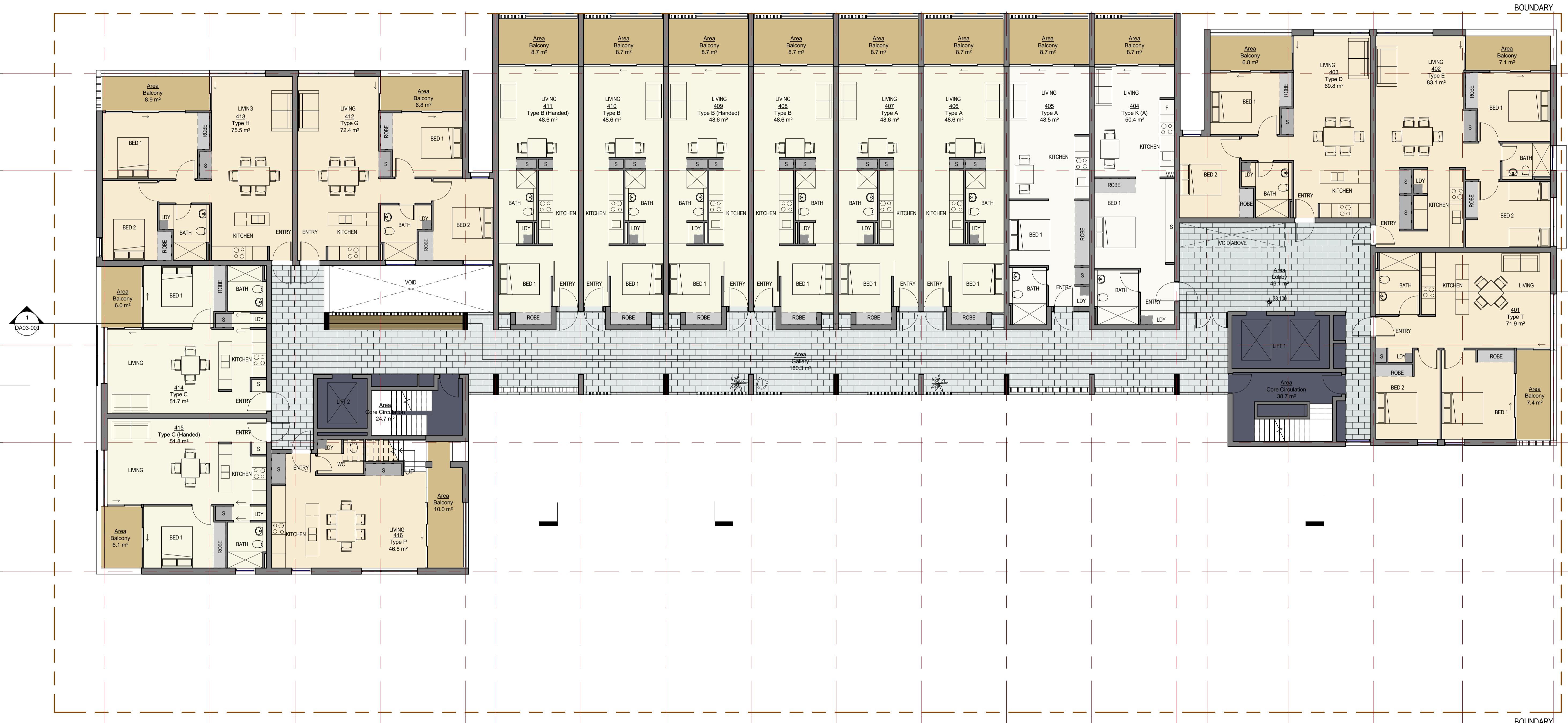
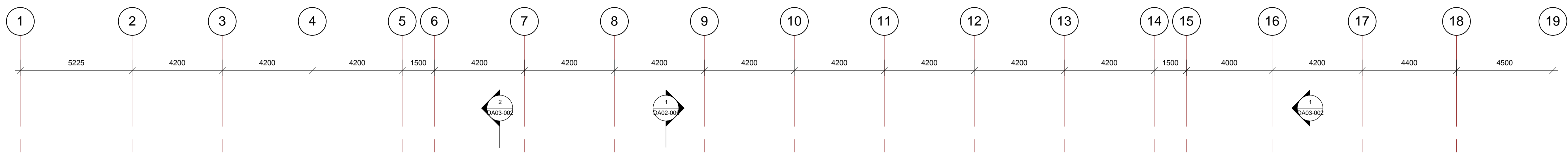
project: North Eveleigh Affordable Housing

drawing: Level 1

drawing no. DA01-003

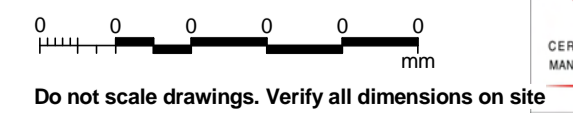
issue: A

25/03/2013 3:43:23 PM



architectus Sydney 2012

Architectus Sydney Pty Ltd is the owner of the copyright subsisting in these drawings, plans, designs and specifications. They must not be used, reproduced or copied, in whole or in part, nor may the information, ideas and concepts therein, contained (which are confidential to Architectus Sydney Pty Ltd) be disclosed to any person without the prior written consent of that company.

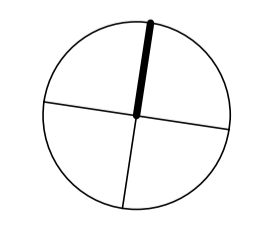


Do not scale drawings. Verify all dimensions on site



issue	amendment	date
A	DA Issue	27/03/13

issue	amendment	date



- Studio Bed
- 1 Bed
- 2 Bed
- 3 Bed
- Private Open Space
- Vertical Circulation
- Foyer
- Gallery
- Services

architectus™

Architectus Sydney
 Level 3 341 George Street
 Sydney NSW 2000
 T (61 2) 8252 8400
 F (61 2) 8252 8600
 sydney@architectus.com.au

Sydney
 Melbourne
 Auckland
 Brisbane
 Shanghai

ABN 11 098 489 448

checked: Checker scale: 1 : 100 @ A1
 drawn: Author project no: 120325

project: North Eveleigh Affordable Housing

drawing: Level 4

drawing no.: DA01-006

issue: A

25/03/2013 3:43:29 PM

1 2 3 4 5 6 7 8 9 10 11 12 13 14 15 16 17 18 19

A

B

C

D

E

2
DA03-002

1
DA02-000

1
DA03-002

RL 44.100

RL 44.100

RL 47.100

1
DA03-001

architectus Sydney 2012

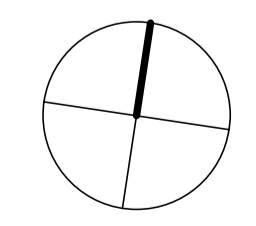
Architectus Sydney Pty Ltd is the owner of the copyright subsisting in these drawings, plans, designs and specifications. They must not be used, reproduced or copied, in whole or in part, nor may the information, ideas and concepts therein, contained (which are confidential to Architectus Sydney Pty Ltd) be disclosed to any person without the prior written consent of that company.

0 0 0 0 0 0
mm
Do not scale drawings. Verify all dimensions on site



issue	amendment	date
A	DA Issue	27/03/13

issue	amendment	date



architectus™
 Level 3 341 George Street
 Sydney NSW 2000
 T (61 2) 8252 8400
 F (61 2) 8252 8600
 sydney@architectus.com.au
 ABN 11 098 489 448

Sydney
 Melbourne
 Auckland
 Brisbane
 Shanghai

checked Checker scale 1 : 100 @A1
 drawn Author project no 120325

project North Eveleigh Affordable Housing
 drawing
 drawing no. DA01-009 issue A
 25/03/2013 3:43:33 PM



architectus Sydney 2012

Architectus Sydney Pty Ltd is the owner of the copyright subsisting in these drawings, plans, designs and specifications. They must not be used, reproduced or copied, in whole or in part, nor may the information, ideas and concepts therein, contained (which are confidential to Architectus Sydney Pty Ltd) be disclosed to any person without the prior written consent of that company.

0 1000 2000 3000 4000 5000 mm
Do not scale drawings. Verify all dimensions on site



issue	amendment	date
A	DA Issue	27/03/13

issue	amendment	date

MATERIALS AND FINISHES LEGEND

- WC01 WHITE PAINTED MASONRY/CONCRETE
- FB FACEBRICK
- GL ALUMINIUM FRAMED GLAZING
- BAL01 GLASS BALUSTRADE
- TL01 FEATURE VERTICAL TIMBER LOUVRES
- TL02 FEATURE HORIZONTAL TIMBER LOUVRES
- MF METAL FENCE
- ZR ZINCALUME ROOF
- HMB 'HIT-AND-MISS' BRICKWORK
- S1 SUNSHADE
- SC01 SLIDING SCREENS



architectus™

Architectus Sydney
Level 3 341 George Street
Sydney NSW 2000
T (61 2) 8252 8400
F (61 2) 8252 8600
sydney@architectus.com.au

Sydney
Melbourne
Auckland
Brisbane
Shanghai

ABN 11 098 489 448

checked Checker scale 1 : 100 @ A1
drawn Author project no 120325

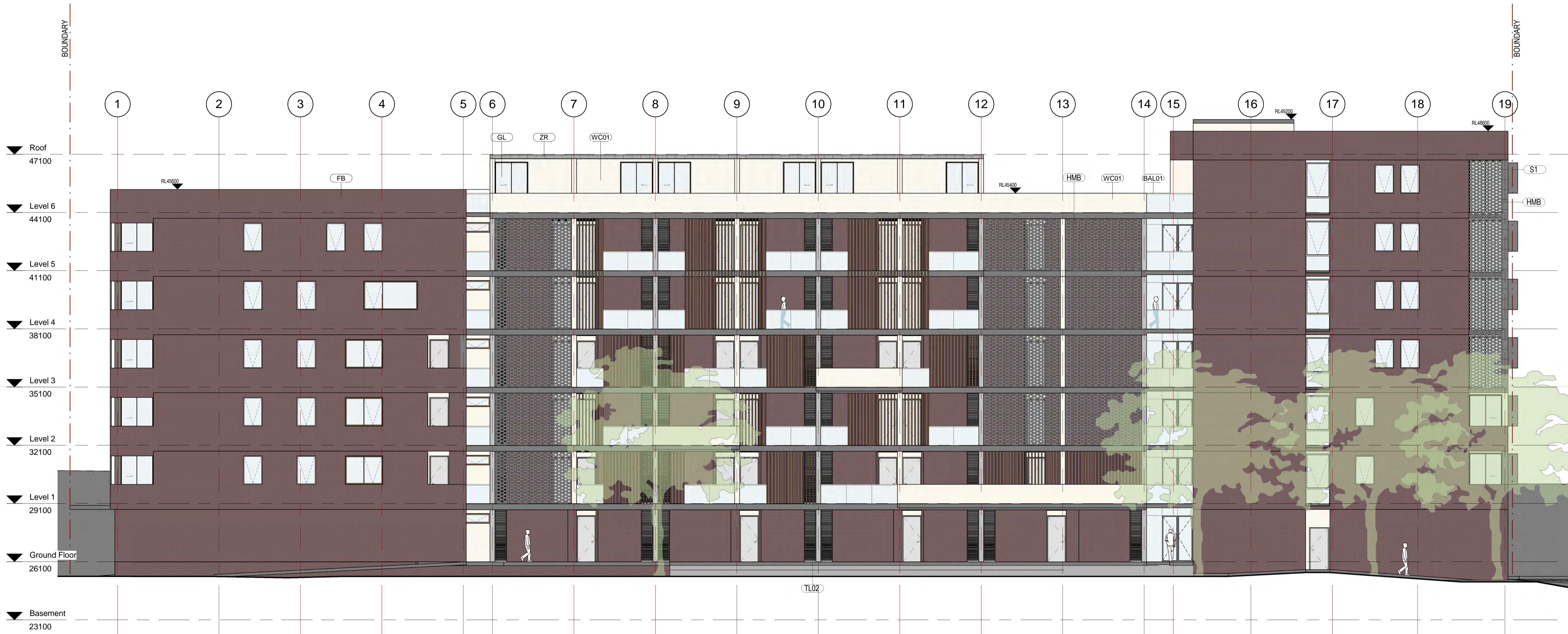
project North Eveleigh Affordable Housing

drawing

North Elevation

drawing no. DA02-001 issue A

25/03/2013 3:43:47 PM



architectus Sydney 2012

Architectus Sydney Pty Ltd is the owner of the copyright subsisting in these drawings, plans, designs and specifications. They must not be used, reproduced or copied, in whole or in part, nor may the information, ideas and concepts therein, contained (which are confidential to Architectus Sydney Pty Ltd) be disclosed to any person without the prior written consent of that company.

0 1000 2000 3000 4000 mm
Do not scale drawings. Verify all dimensions on site



issue	amendment	date
A	DA Issue	27/03/13

issue	amendment	date

MATERIALS AND FINISHES LEGEND

- WC01 WHITE PAINTED MASONRY/CONCRETE
- FB FACEBRICK
- GL ALUMINIUM FRAMED GLAZING
- BAL01 GLASS BALUSTRADE
- TL01 FEATURE VERTICAL TIMBER LOUVRES
- TL02 FEATURE HORIZONTAL TIMBER LOUVRES
- MF METAL FENCE
- ZR ZINCALIME ROOF
- HMB 'HIT-AND-MISS' BRICKWORK
- S1 SUNSHADE
- SC01 SLIDING SCREENS



architectus™

Architectus Sydney
Level 3 341 George Street
Sydney NSW 2000
T (61 2) 8252 8400
F (61 2) 8252 8600
sydney@architectus.com.au

Sydney
Melbourne
Auckland
Brisbane
Shanghai

ABN 11 098 489 448

checked: Checker scale: 1 : 100 @ A1
drawn: Author project no: 120325

project North Eveleigh Affordable Housing

drawing

drawing no. DA02-002 issue A

25/03/2013 3:43:53 PM

