

Toll IPEC Freight Transport Warehouse and Distribution Facility BUNGARRIBEE INDUSTRIAL ESTATE

LANDSCAPE CONCEPT PACKAGE



SITE IMAGE
Landscape Architects

Sydney | Melbourne | Ho Chi Minh City

Landscape Master Plan

Issued under the Environmental Planning and Assessment Act 1979

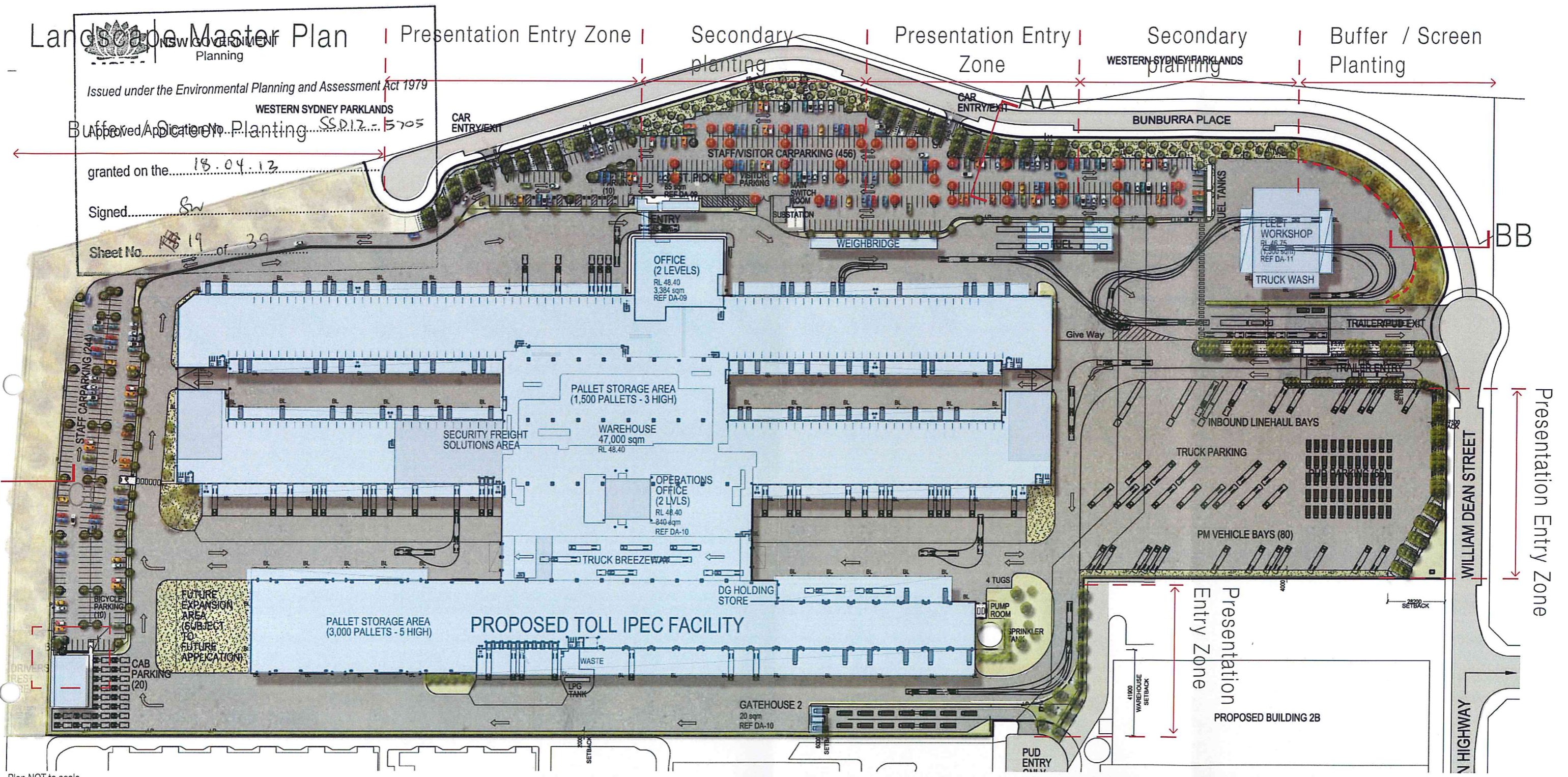
WESTERN SYDNEY PARKLANDS

Approved/Declared Planning SS.D12 - 5705

granted on the 18.04.13

Signed Sw

Sheet No 19 of 39



Plan NOT to scale



Buffer / Screen Planting



Presentation / Entry Planting



Feature 'Railroad Rock Ballast' Banding



Secondary Planting Zone - Grid of Trees in Turf



Screening Element

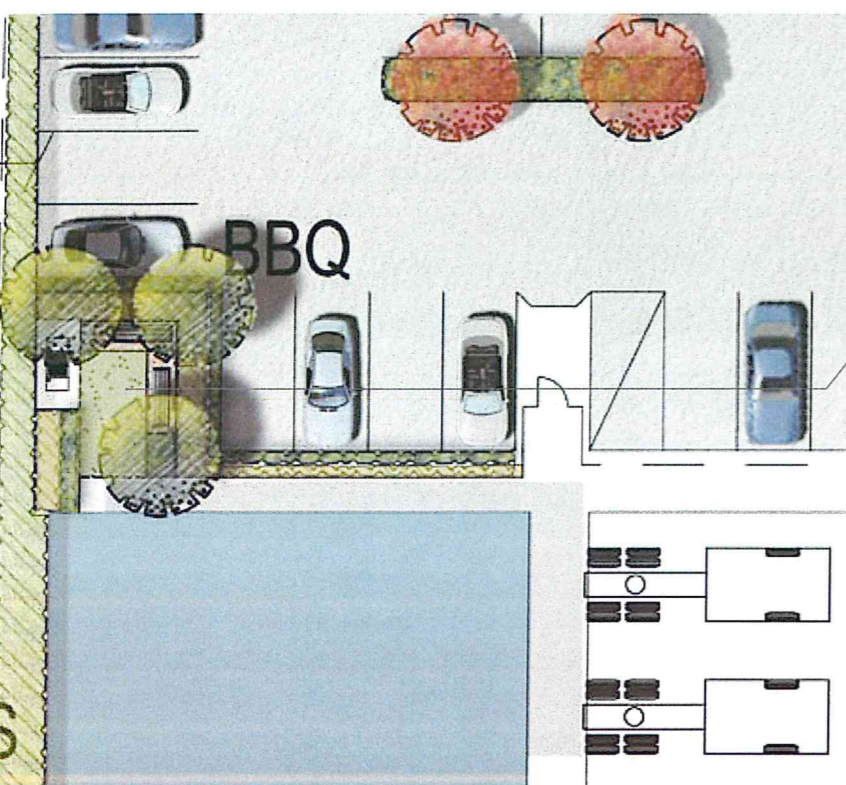
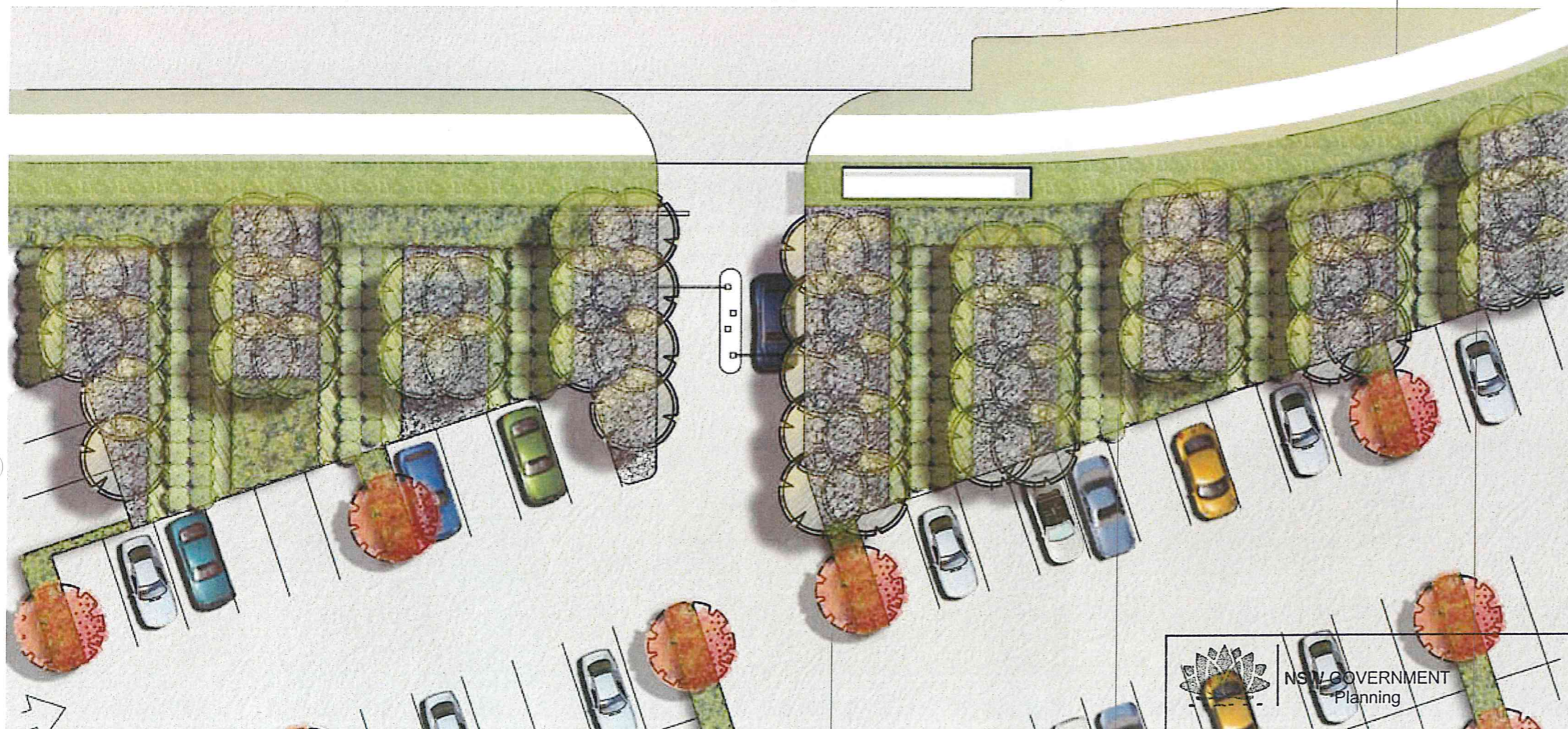


Carpark Planting



Presentation Entry Zone / BBQ Area - Typical Landscape Detail Plan

Streetscape as existing



BBQ break out space



Feature Trees to carpark, with native grass plantings to car parking aisle

Blocks of hedging species to provide iconic entry branding

Tree plantings in beds of rock ballast and groundcovers

NSW GOVERNMENT Planning

Scale: 1:250 @ A3

Issued under the Environmental Planning and Assessment Act 1979

SSD12-5705

Approved Application No.

granted on the 18.04.13

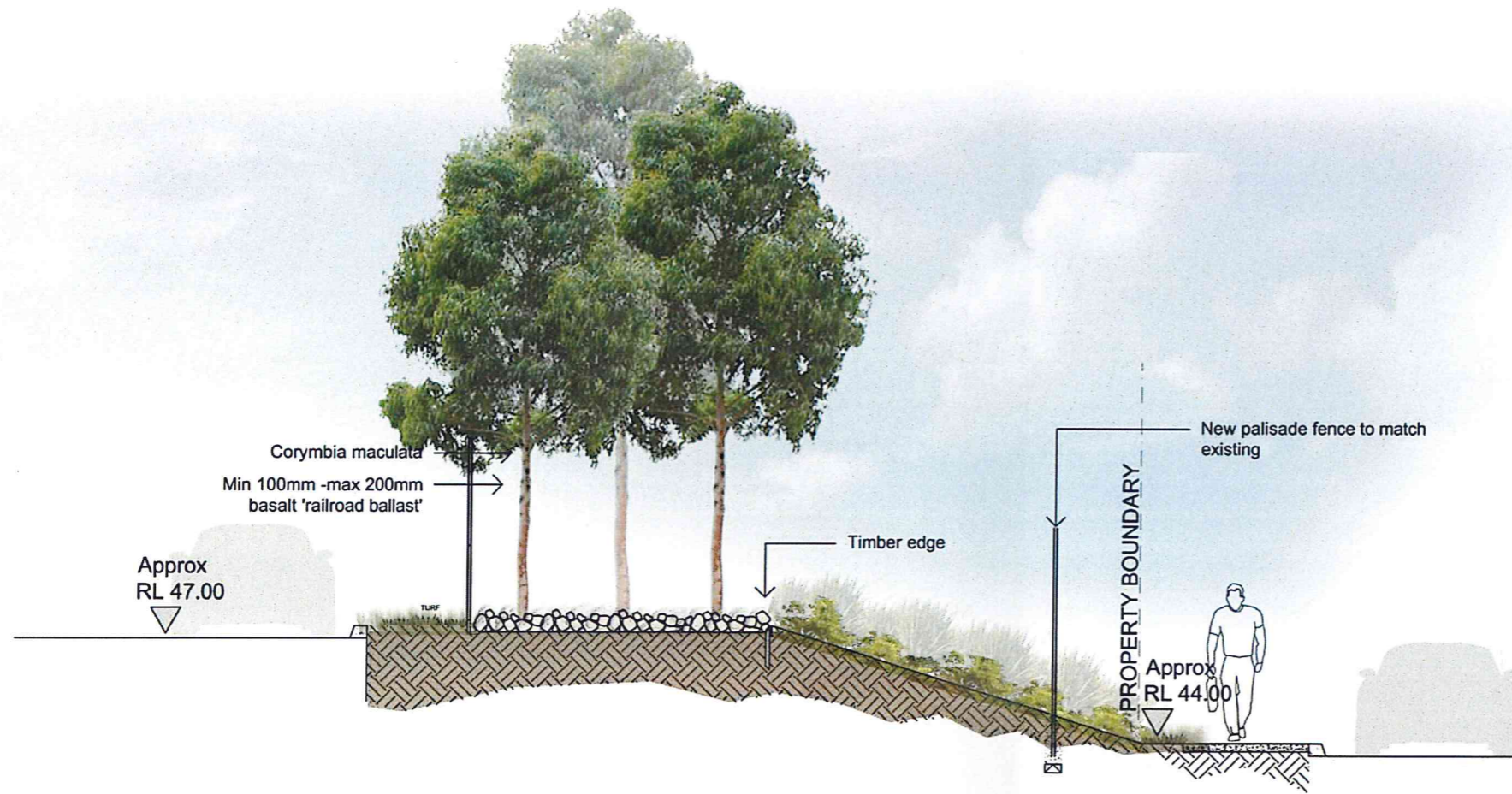
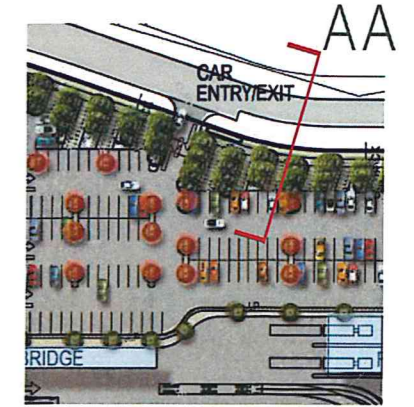
Signed Sw


Sheet No. 20 of 39

Toll IPEC Freight Transport Warehouse and Distribution Facility

Section AA - Presentation Entry Zone

scale: 1:75 @ A3

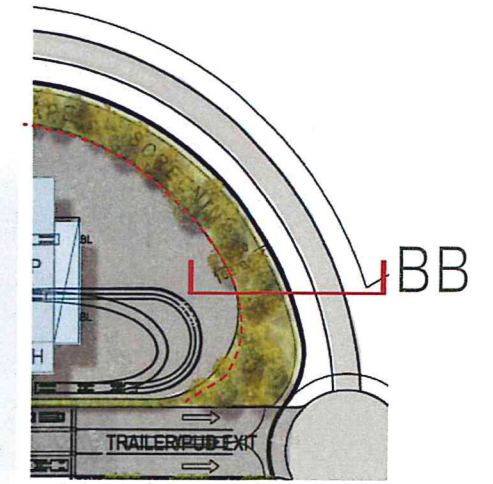


	NSW GOVERNMENT Planning
Issued under the Environmental Planning and Assessment Act 1979	
Approved Application No.....SSD12-5705	
granted on the.....18.04.13	
Signed.....sw	
Sheet No.....24 ²¹ of.....39	

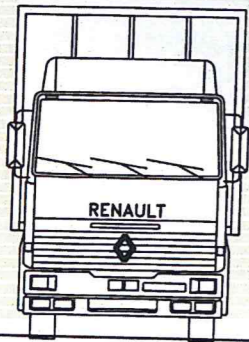


Section BB - Buffer Planting

scale: 1:75 @ A3



Timber Truck Wash Fence
(to run length of
embankment as shown on
masterplan)



Approx
RL 46.50

Dense vegetated buffer to screen truck wash


New palisade
fence to match
existing

PROPERTY BOUNDARY

Approx
RL 44.00

Public Domain verge by others



 NSW GOVERNMENT
Planning

Issued under the Environmental Planning and Assessment Act 1979

Approved Application No. SSD12-5705

granted on the 18.04.13


Signed SW

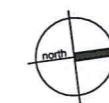
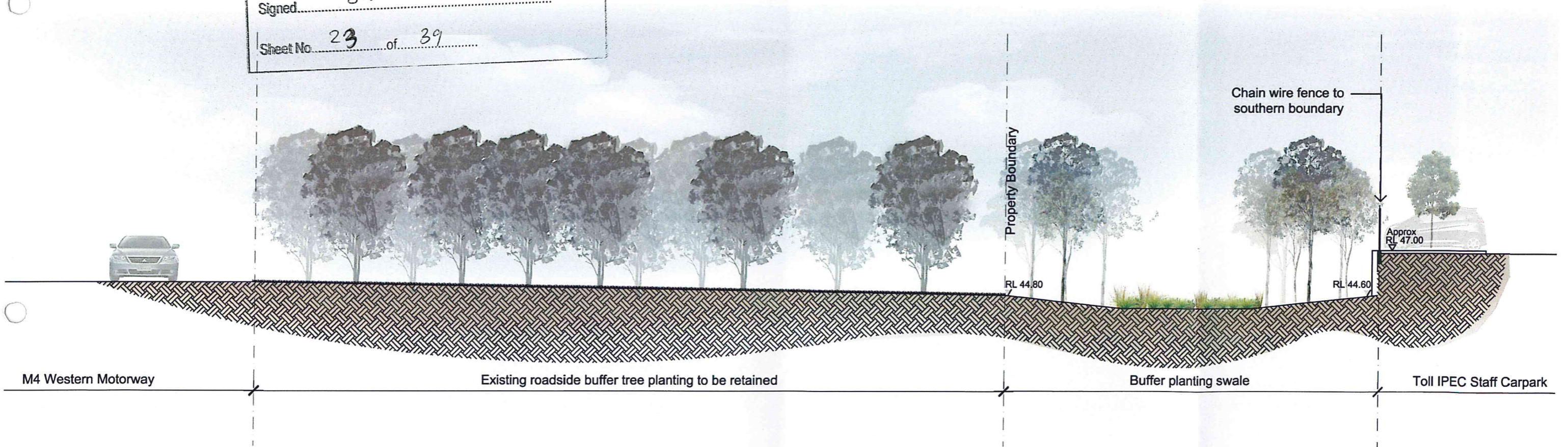
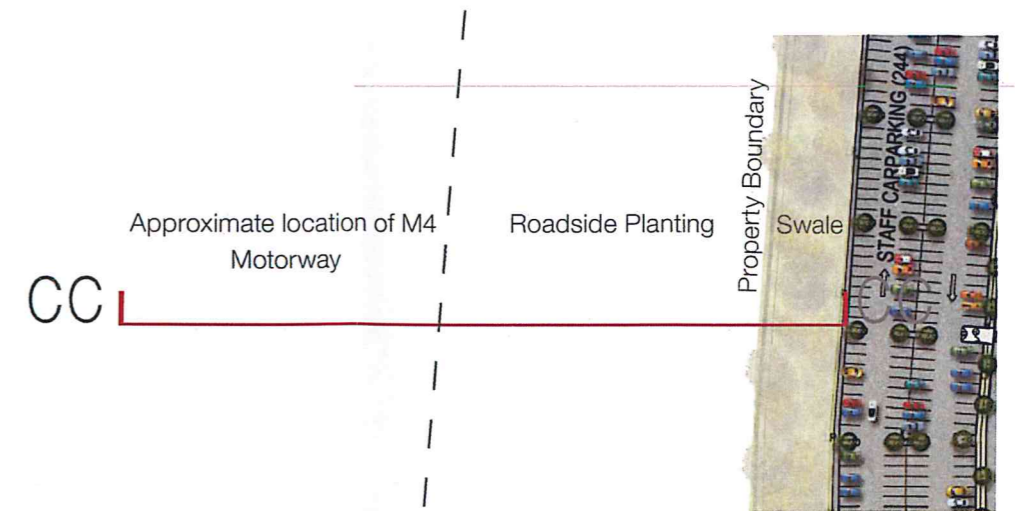
Sheet No. 22 of 39



Section CC - Buffer Planting

scale: 1:200 @ A3


NSW GOVERNMENT
 Planning
 Issued under the Environmental Planning and Assessment Act 1979
 Approved Application No. SSD12 - 5705
 granted on the 18.04.13
 Signed SW
 Sheet No. 23 of 39



Botanical Name	Common Name	Mature Height (m.)	Mature Spread (m.)	Pot Size
Trees				
<i>Angophora floribunda</i>	Rough-barked Apple	20	8	75L
<i>Corymbia maculata</i>	Spotted Gum	15	7	75L
<i>Eucalyptus amplifolia</i>	Cabbage Gum	25	8	75L
<i>Eucalyptus crebra</i>	Narrow Leaved Ironbark	15	6	25L
<i>Eucalyptus moluccana</i>	Grey Box	20	8	25L
<i>Eucalyptus tereticornis</i>	Forest Red Gum	30	10	75L
<i>Pyrus calleryana</i>	Callery Pear	11	7	75L
<i>Tristanopsis laurina</i> 'Luscious'	Water Gum	9	8	75L
<i>Melaleuca decora</i>	White Feather Honeymyrtle	7	3	25L
<i>Melaleuca nodosa</i>	Ball Honey-myrtle	4	2.5	25L
<i>Melaleuca styphelioides</i>	Prickly Leaved Paperbark	7	3	75L



Corymbia maculata



Eucalyptus crebra



Tristanopsis laurina 'Luscious'



Doryanthus excelsa

Shrubs				
<i>Acacia falcata</i>	Sickle Wattle	4	2	300mm
<i>Callistemon 'Endeavour'</i>	Bottlebrush	3	3	300mm
<i>Kunzea ambigua</i>	Tick Bush	2.5	2.5	300mm
<i>Pittosporum 'Miss Muffet'</i>	Dwarf Pittosporum	1	1.5	300mm
<i>Viburnum odoratissimum</i>	Sweet Viburnum	5	3.5	300mm
<i>Westringia glabra</i>	Violet Westringia	1	1	300mm



Pyrus calleryana



Pyrus calleryana



Callistemon 'Endeavour'



Dianella caerulea 'Breeze'

Accent Species				
<i>Doryanthus excelsa</i>	Gynea Lily	2	2	300mm
<i>Phormium tenax</i> 'Purpurea'	Purple NZ Flax	1.5	1	300mm

Groundcovers and Grasses				
<i>Dianella caerulea</i> 'Breeze'	Blue Flax Lily	0.4	0.4	150mm
<i>Hardenbergia violacea</i>	Happy Wanderer Native Sarsparilla	2.5	2.5	150mm
<i>Hibbertia scandens</i>	Snake Vine	0.2	2	150mm
<i>Lomandra longifolia</i>	Mat Rush	1	0.6	150mm
<i>Lomandra longifolia</i> 'Tanika'	Mat Rush Grass	0.7	0.6	150mm
<i>Myoporum parvifolium</i>	Boobialla	0.2	1.5	150mm
<i>Pennisetum alopecuroides</i>	Boxtail	0.8	0.5	150mm
<i>Poa labillardieri</i>	Tussock Grass	0.8	0.5	150mm
<i>Theropoda australis</i>	Star Jasmine	0.2	0.5	150mm
<i>Trachelospermum jasminoides</i>				




Phormium tenax 'Purpurea'



Pennisetum alopecuroides



Westringia fruticosa



NSW GOVERNMENT
Planning

Issued under the Environmental Planning and Assessment Act 1979

Approved Application No. SSD12-5705

granted on the 18.04.13

Signed SW

Sheet No. 24 of 39