

# Toll IPEC - FREIGHT TRANSPORT WAREHOUSE AND DISTRIBUTION FACILITY

## DRAWING LIST

DA01	COVER SHEET & LOCATION PLAN
DA02	MASTERPLAN / SITE ANALYSIS
DA03	SITE PLAN
DA04	WAREHOUSE GROUND FLOOR PLAN
DA05	WAREHOUSE MEZZANINE PLAN / CONVEYOR LAYOUT
DA06	WAREHOUSE ROOF PLAN
DA07	WAREHOUSE ELEVATIONS
DA08	WAREHOUSE SECTION & ELEVATIONS
DA09	MAIN OFFICE PLANS & ELEVATIONS
DA10	OPERATIONS OFFICE & GATEHOUSES
DA11	FLEET WORKSHOP & DRIVERS REST AREA
DA12	WAREHOUSE INDICATIVE FITOUT PLAN
DA13	DESIGN PRESENTATION AND STATEMENT
DA14	PERSPECTIVES
DA15	SIGNAGE PLAN

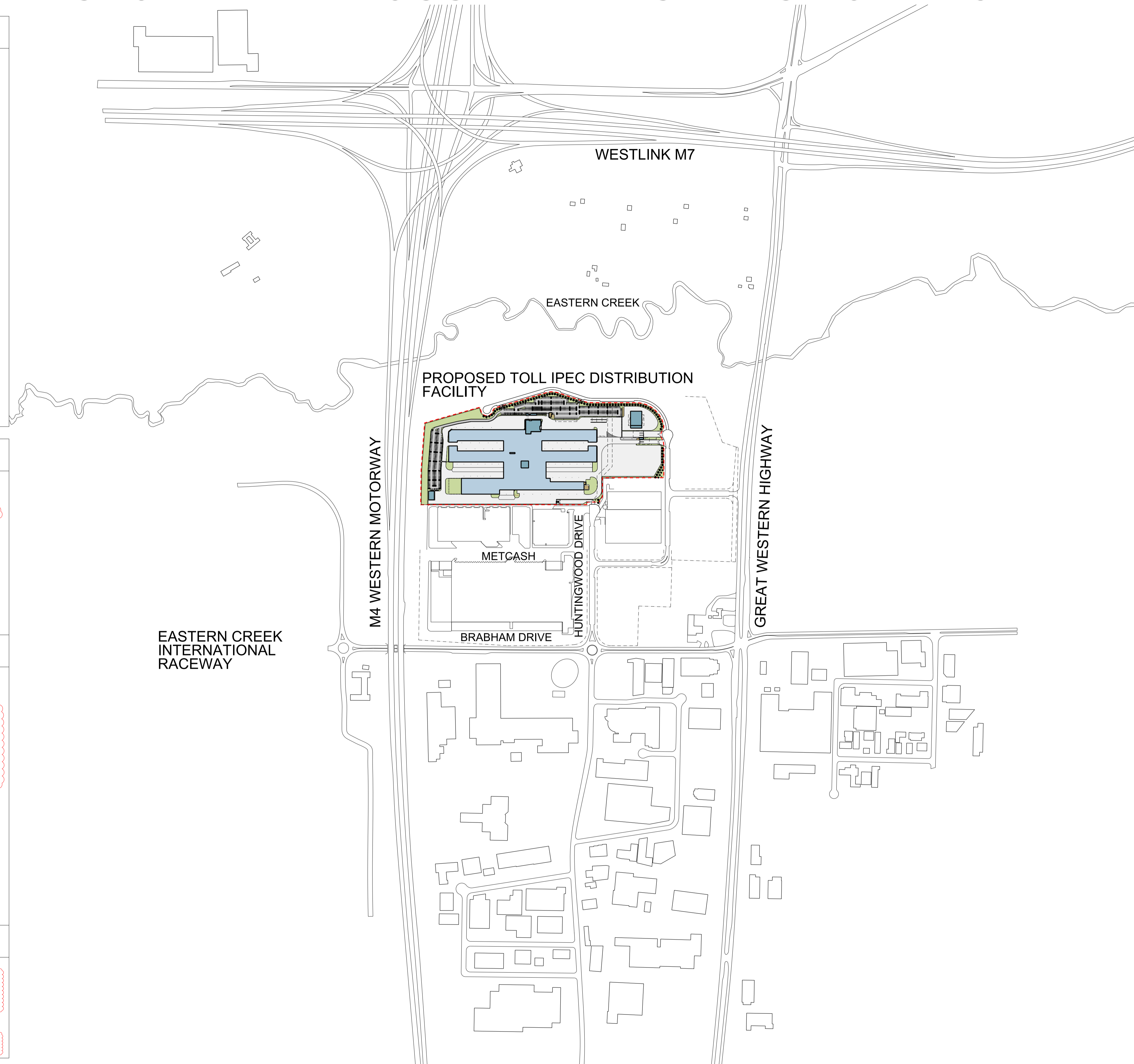
## DEVELOPMENT SCHEDULE

SITE AREA	179,575 SQM
TOTAL BUILDING AREA	62,261 SQM
AWNING AREA	11,353 SQM
HARDSTAND AREA	81,723 SQM
LIGHT DUTY AREA	19,515 SQM
LANDSCAPE AREA	26,940 SQM
FSR	0.346:1

SCHEDULE OF AREAS	GFA
WAREHOUSE	46,983 SQM
WAREHOUSE MEZZANINE	8,711 SQM
OFFICE (2 LEVELS)	3,385 SQM
MAIN OFFICE VIEWING PLATFORM	20 SQM
OPERATIONS OFFICE (2 LVLS)	855 SQM
FLEET WORKSHOP	1,300 SQM
TRUCK WASH	240 SQM
DRIVERS REST AREA	396 SQM
GATEHOUSES	146 SQM
CUSTOMER PICK-UP	85 SQM
STAFF/VISITOR ENTRY & BRIDGE	140 SQM

## CARPARKING SCHEDULE

STAFF CARPARKING	643
VISITORS CARPARKING	40
DISABLED CARPARKING	14
TOTAL	697



These designs, plans & specifications and the copyright therein are the property of the Architect and must not be used, reproduced or copied wholly or in part without the written permission of this office.

FIGURED DIMENSIONS TO BE USED IN PREFERENCE TO SCALING. ALL DIMENSIONS TO BE CHECKED ON SITE.

THIS DOCUMENT NOT TO BE USED FOR CONSTRUCTION UNLESS SIGNED & ISSUED FOR CONSTRUCTION

ISSUE	REV.	DESCRIPTION	DATE
K	1	REVISED DEVELOPMENT APPLICATION	03.04.13
J	1	Visitor Parking added	27.03.13
J	1	REVISED DEVELOPMENT APPLICATION	27.03.13
H	1	Bicycle parkings added as per Traffic Engineer report	19.03.13
H	1	REVISED DEVELOPMENT APPLICATION	19.03.13
H	1	Assess revised	19.03.13
G	1	DEVELOPMENT APPLICATION	06.12.12
F	1	ISSUE FOR APPROVAL	28.11.12
E	1	ISSUE FOR APPROVAL	22.11.12
D	1	COORDINATION ISSUE	20.11.12
C	1	CLIENT REVIEW	15.11.12
B	1	PRE DA MEETING	06.11.12
A	1	PRELIMINARY	28.10.12



**SBA ARCHITECTS**  
Commercial Industrial Residential Retail Interior Design  
Suite 702, 83 Mount Street, North Sydney NSW 2060  
T 02 9929 9988 F 02 9929 8899  
E info@sbaarch.com.au W www.sbaarch.com.au

CLIENT  
**Goodman**

PROJECT  
**Toll IPEC Freight Transport Warehouse and Distribution Facility**  
BUNGARRIBEE INDUSTRIAL ESTATE

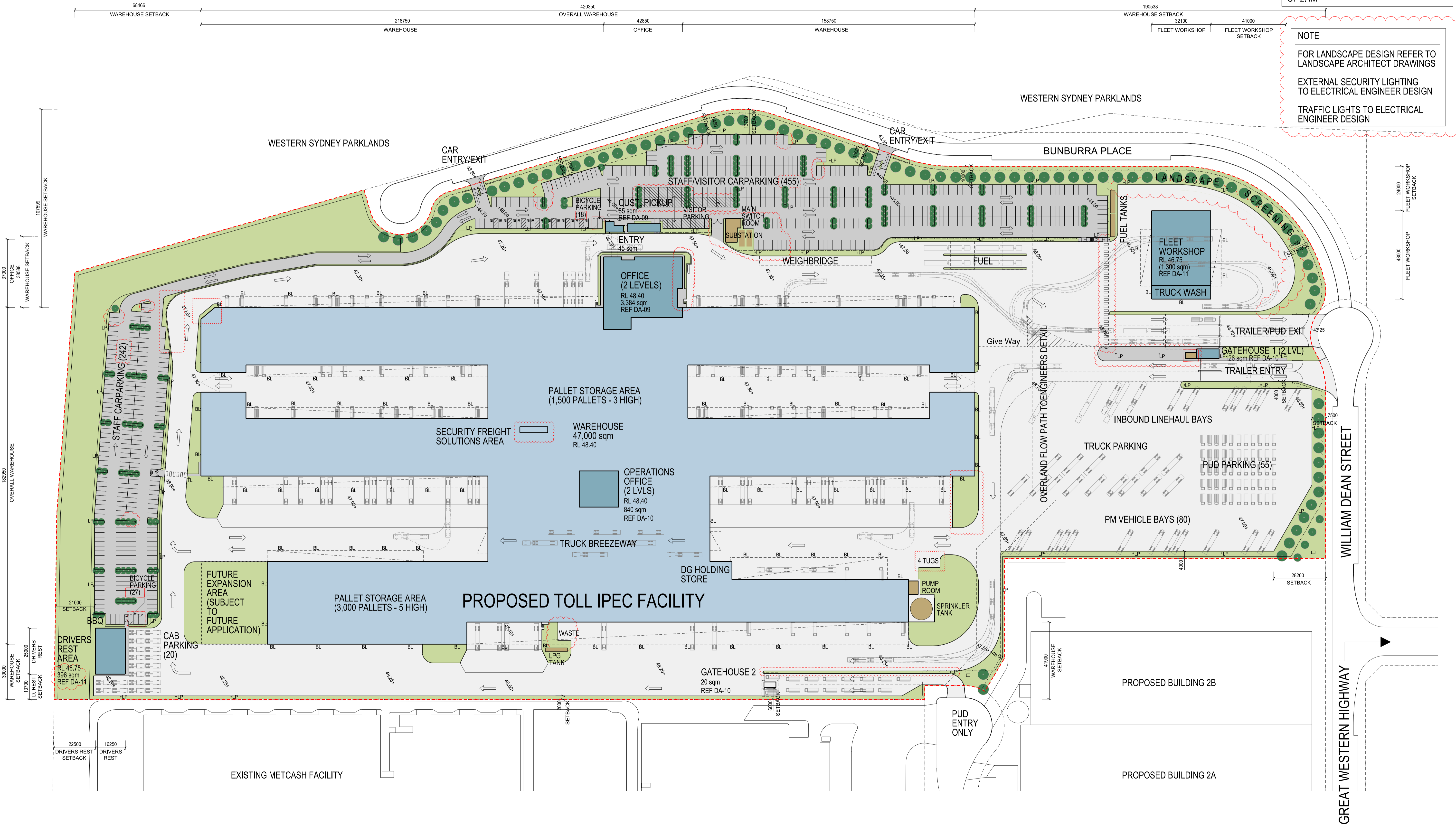
TITLE  
**COVER SHEET & LOCATION PLAN**

DATE	15.10.1012	PROJECT No.	12197
SCALE	N.T.S.	DRAWN	SBA
CHECKED		DWG No.	DA-01
APPROVED		ISSUE	K

**LEGEND - SECURITY LIGHTING STRATEGY**  
 BL BUILDING MOUNT LIGHT FITTING  
 LP LIGHT POLE  
 TL TRAFFIC LIGHTS

**FENCING**  
 STREET FRONTAGE  
 2.1m HIGH PALISADE FENCING  
 POWDERCOATED FINISH  
 COLOUR - BLACK  
  
 PERIMETER FENCE TO HARDSTAND  
 (SECURITY FENCE)  
 PVC COATED CHAIN WIRE WITH  
 3 ROWS OF BARBER WIRE OVER  
 PROVIDING AN OVERALL HEIGHT  
 OF 2.4M

**NOTE**  
 FOR LANDSCAPE DESIGN REFER TO  
 LANDSCAPE ARCHITECT DRAWINGS  
  
 EXTERNAL SECURITY LIGHTING  
 TO ELECTRICAL ENGINEER DESIGN  
  
 TRAFFIC LIGHTS TO ELECTRICAL  
 ENGINEER DESIGN



These designs, plans & specifications and the copyright therein are the property of the Architect and must not be used, reproduced or copied wholly or in part without the written permission of this office.

FIGURED DIMENSIONS TO BE USED IN PREFERENCE TO SCALING. ALL DIMENSIONS TO BE CHECKED ON SITE

THIS DOCUMENT NOT TO BE USED FOR CONSTRUCTION UNLESS SIGNED & ISSUED FOR CONSTRUCTION

ISSUE	REV.	DESCRIPTION	DATE	ISSUE	REV.	DESCRIPTION	DATE
J	1	ISSUE FOR APPROVAL	22.11.12	M	9	REVISED DEVELOPMENT APPLICATION	19.03.13
H	1	CARPARKING REVISED	15.11.12		8	Hardstand area increased at north west corner	
G	1	GENERAL AMENDMENTS	16.11.12		7	Security lighting proposed strategy shown	
F	1	REVISION CLOUDS ADDED	15.11.12		6	Warehouse Southwest Corner Splayed	
E	1	Visitor parking added			5	Parking added	
D	1	BBQ added			4	Waste enclosure added	04.04.13
C	1	Loading dock repositioned			3	Car parking numbers revised	03.04.13
B	1	gallows repositioned			2	REVISED DEVELOPMENT APPLICATION	27.03.13
A	1	Tank screen added			1	Visitor Parking added	
	1	Landscaped depth revised				REVISED DEVELOPMENT APPLICATION	
	1	Office moved 1.2m south				CLIENT REVIEW	
	1	PRE-DA MEETING	08.11.12	L	1	ISSUE FOR APPROVAL	05.12.12
	1			K	1		28.11.12

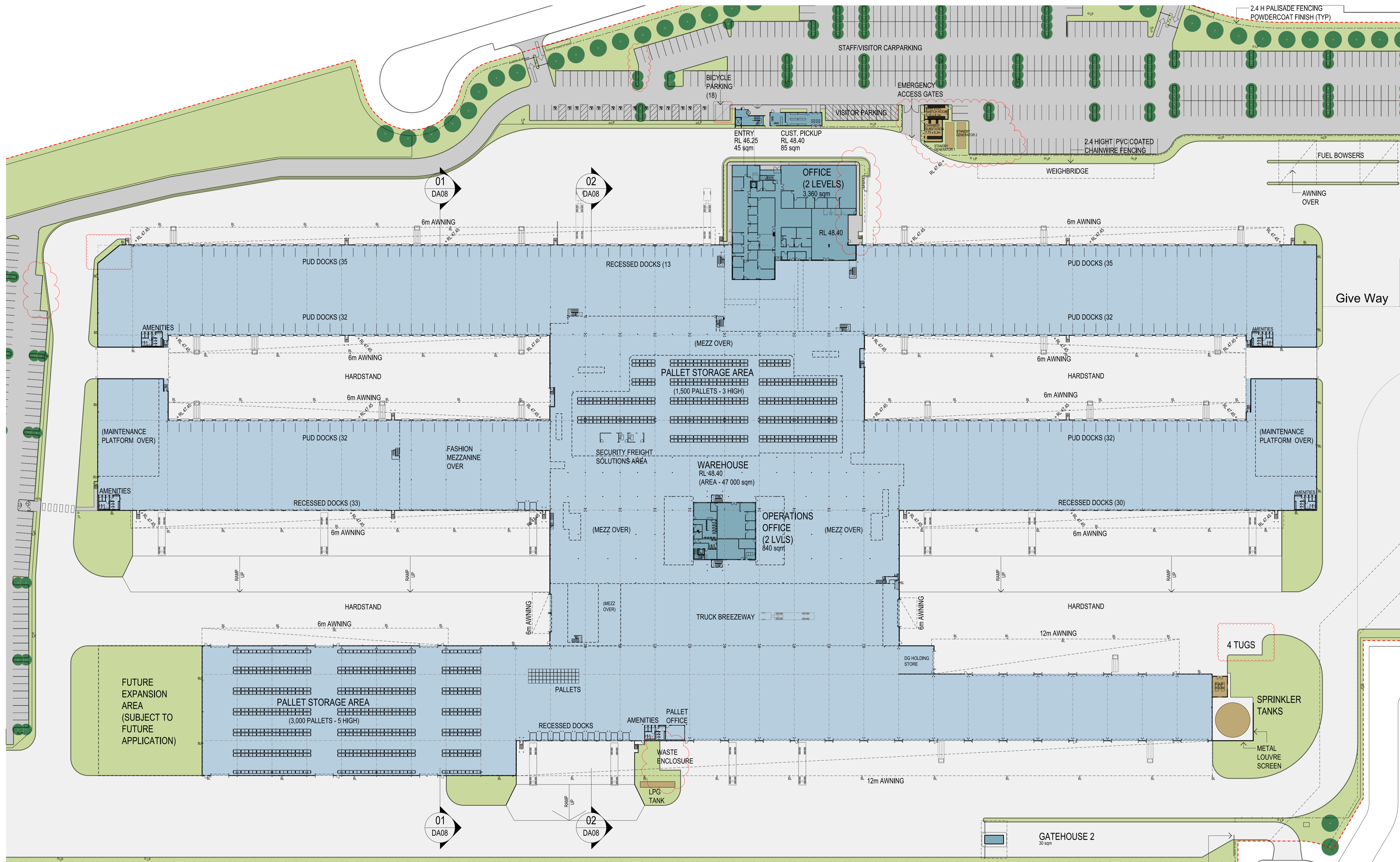
**SBA ARCHITECTS**  
 Commercial Industrial Residential Retail Interior Design  
 Suite 702, 83 Mount Street, North Sydney NSW 2060  
 T 02 9929 9988 F 02 9929 8899  
 E info@sbaarch.com.au W www.sbaarch.com.au

**Goodman**

**PROJECT**  
 Toll IPEC Freight Transport  
 Warehouse and Distribution Facility  
 BUNGARRIBEE INDUSTRIAL ESTATE

**TITLE**  
 SITE PLAN

DATE	15.10.1012	PROJECT No.	12197
SCALE	1:1000 @ A1	DWG No.	DA - 03
DRAWN	SBA	ISSUE	R
CHECKED			
APPROVED			

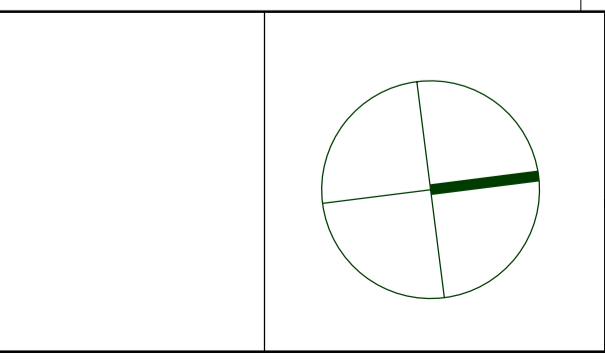


These designs, plans & specifications and the copyright therein are the property of the Architect and must not be used, reproduced or copied wholly or in part without the written permission of this office.

FIGURED DIMENSIONS TO BE USED IN PREFERENCE TO SCALING. ALL DIMENSIONS TO BE CHECKED ON SITE

THIS DOCUMENT NOT TO BE USED FOR CONSTRUCTION UNLESS SIGNED & ISSUED FOR CONSTRUCTION

ISSUE	REV.	DESCRIPTION	DATE	ISSUE	REV.	DESCRIPTION	DATE	ISSUE	REV.	DESCRIPTION	DATE
G	5	CLIENT REVIEW	16.11.12	N	12	REVISED DEVELOPMENT APPLICATION	27.03.13				
	4	Access amended			11	REVISED DEVELOPMENT APPLICATION	19.03.13				
	3	LPG tank added			10	Security lighting proposed strategy shown					
	2	Security freight solutions area added			9	Warehouse Southwest Corner Splayed					
	1	Stair relocated			8	Parking added					
F	1	Roller shutters added, stairs relocated	15.11.12	M	7	CLIENT REVIEW					
	9	REVISION CLOUDS ADDED			6	RS and stairs repositioned, stair from Fashion Mezz added					
	8	Visitor parking added			5	Dangerous Goods store relocated					
	7	Stair added			4	PUD landscape entry realised					
	6	Loading dock repositioned			3	Substation relocated					
	5	Gatehouse repositioned			2	North West corner of podium of Main Office revised					
	4	Task screen added			1	South West carpark / driveway revised					
	3	Roller shutter revised				Signage relocated					
	2	Operations office layout updated				Roller shutters added, exit stair relocated / deleted.					
	1					Stairs on fingers relocated					



**SBA ARCHITECTS**

Commercial Industrial Residential Retail Interior Design

Suite 702, 83 Mount Street, North Sydney NSW 2060

T 02 9929 9988 F 02 9929 8899

E info@sbaarch.com.au W www.sbaarch.com.au

CLIENT

**Goodman**

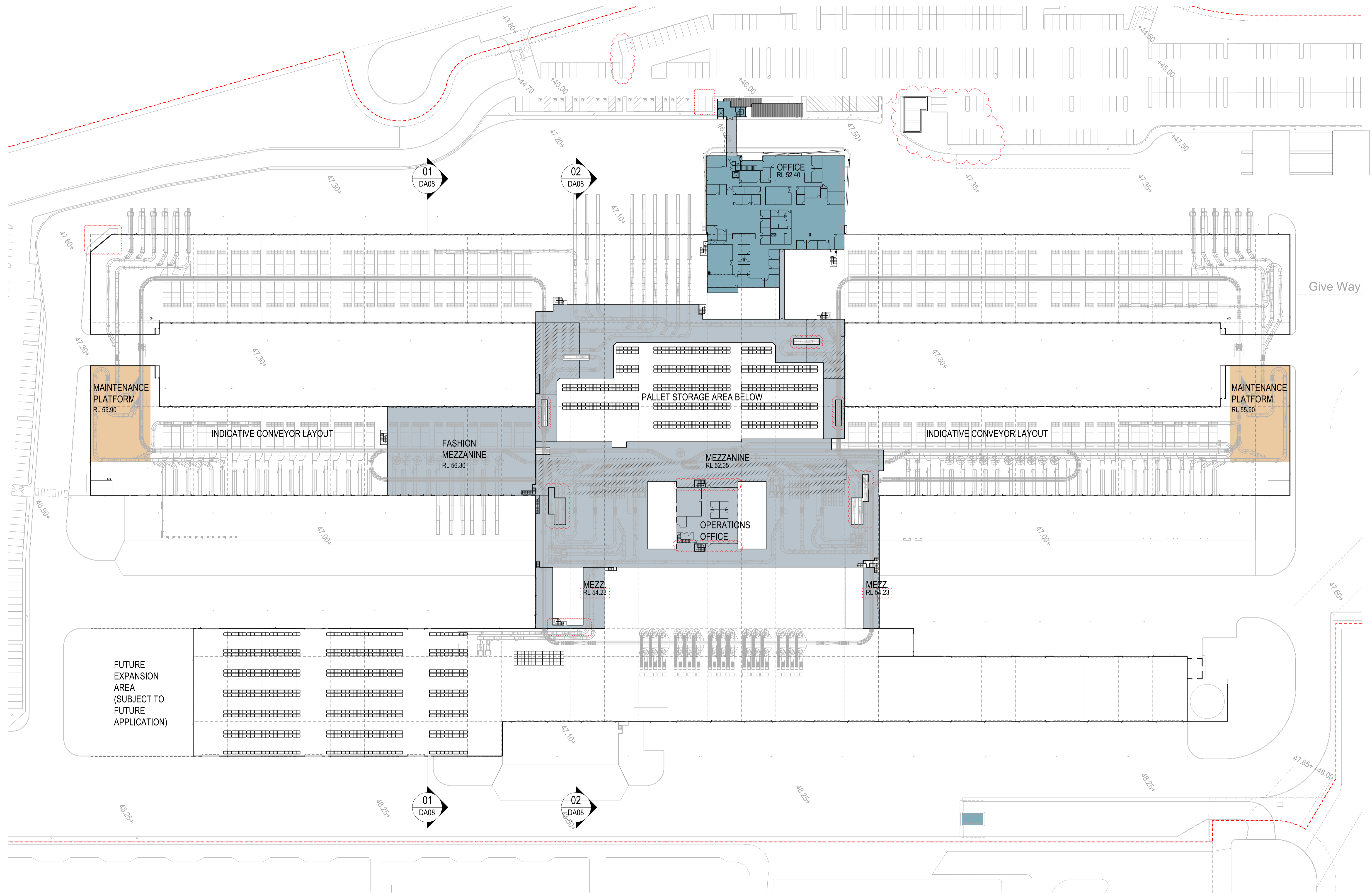
PROJECT

Toll IPEC Freight Transport Warehouse and Distribution Facility BUNGARRIBEE INDUSTRIAL ESTATE

TITLE

WAREHOUSE GROUND FLOOR PLAN

DATE	15.10.12	PROJECT No.	12197
SCALE	1:500 @ A1	DWG No.	DA - 04
DRAWN	SBA	ISSUE	N
CHECKED			
APPROVED			



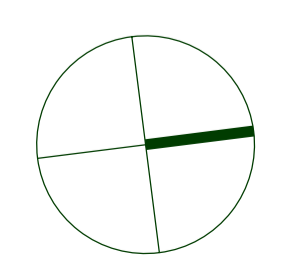
These designs, plans & specifications and the copyright therein are the property of the Architect and must not be used, reproduced or copied wholly or in part without the written permission of this office.

FIGURED DIMENSIONS TO BE USED IN PREFERENCE TO SCALING. ALL DIMENSIONS TO BE CHECKED ON SITE

THIS DOCUMENT NOT TO BE USED FOR CONSTRUCTION UNLESS SIGNED & ISSUED FOR CONSTRUCTION

ISSUE	REV.	DESCRIPTION	DATE
J		DEVELOPMENT APPLICATION	05.12.12
H		ISSUE FOR APPROVAL	28.11.12
G		ISSUE FOR APPROVAL	22.11.12
F		CO-ORDINATION ISSUE	20.11.12
E		REVISION CLOUDS ADDED	15.11.12
4		Gatehouse repositioned	
3		Tank screen added	
2		Operations office layout updated	
1		Office repositioned	
D		CLIENT REVIEW	13.11.12
C		PRE DA MEETING	06.11.12
B		PRELIMINARY	02.11.12
A		PRELIMINARY	26.10.12

ISSUE	REV.	DESCRIPTION	DATE
L		REVISED DEVELOPMENT APPLICATION	27.03.13
K		Bicycle parking added as per Traffic Engineer report	19.03.13
4		REVISED DEVELOPMENT APPLICATION	
3		Warehouse Southwest Corner Splayed	
2		Main Office and Operations Office first floor plans revised	
1		Conveyor Layout Revised	
		Mezzanine layout revised	



**SBA ARCHITECTS**

Commercial Industrial Residential Retail Interior Design

Suite 702, 83 Mount Street, North Sydney NSW 2060

T 02 9929 9988 F 02 9929 8899  
E info@sbaarch.com.au W www.sbaarch.com.au

CLIENT

**Goodman**

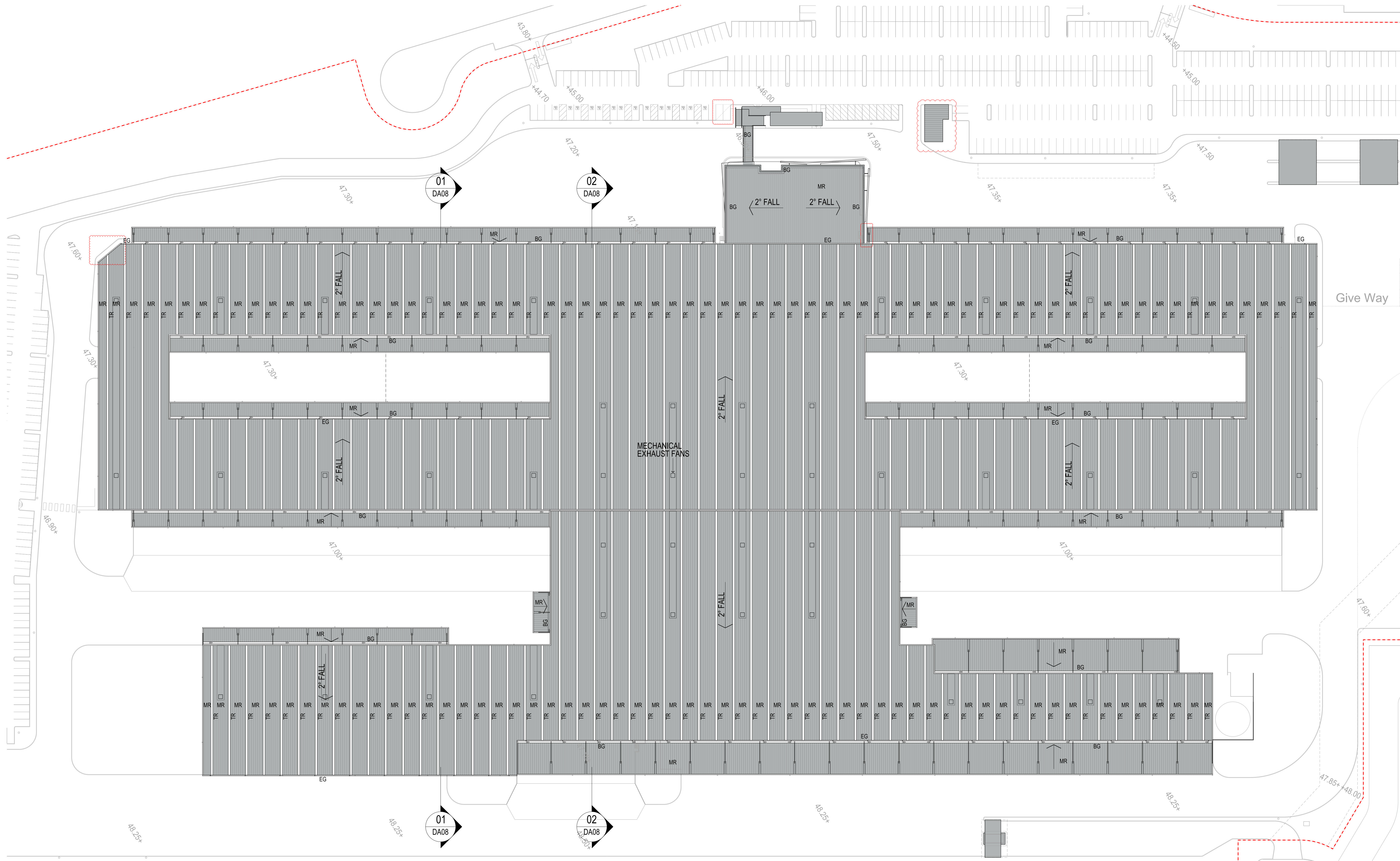
PROJECT

Toll IPEC Freight Transport Warehouse and Distribution Facility BUNGARRIBEE INDUSTRIAL ESTATE

TITLE

WAREHOUSE MEZZANINE PLAN/ CONVEYOR LAYOUT

DATE	15.10.12	PROJECT No.	12197
SCALE	1:500 @ A1	DWG No.	DA - 05
DRAWN	SBA	ISSUE	L
CHECKED			
APPROVED			



These designs, plans & specifications and the copyright therein are the property of the Architect and must not be used, reproduced or copied wholly or in part without the written permission of this office.

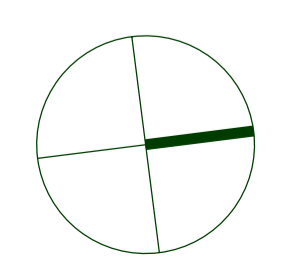
FIGURED DIMENSIONS TO BE USED IN PREFERENCE TO SCALING. ALL DIMENSIONS TO BE CHECKED ON SITE

THIS DOCUMENT NOT TO BE USED FOR CONSTRUCTION UNLESS SIGNED & ISSUED FOR CONSTRUCTION

ISSUE	REV.	DESCRIPTION	DATE
K	1	REVISED DEVELOPMENT APPLICATION	27.03.13
J	1	Bicycle parking added as per Traffic Engineer report	19.03.13
J	2	REVISED DEVELOPMENT APPLICATION	
J	3	Warehouse Southeast Corner Subdiv	
J	4	Substation relocated	
H	1	DEVELOPMENT APPLICATION	05.12.12
G	1	ISSUE FOR APPROVAL	28.11.12
F	1	ISSUE FOR APPROVAL	22.11.12
E	1	CO-ORDINATION ISSUE	15.11.12
D	1	REVISION CLOUDS ADDED	20.11.12
D	2	Roof added	
C	1	Office repositioned, roof amended	13.11.12
B	1	CLIENT REVIEW	06.11.12
A	1	PRELIMINARY	26.10.12

**LEGEND:**

BG	BOX GUTTER
EG	EAVES GUTTER
MR	METAL ROOF SHEETING
TR	TRANSLUCENT ROOF SHEETING



**SBA ARCHITECTS**

Commercial Industrial Residential Retail Interior Design

Suite 702, 83 Mount Street, North Sydney NSW 2060

T 02 9929 9988 F 02 9929 8899  
E info@sbaarch.com.au W www.sbaarch.com.au

CLIENT

PROJECT

**Toll IPEC Freight Transport Warehouse and Distribution Facility**  
BUNGARRIBEE INDUSTRIAL ESTATE

TITLE

**WAREHOUSE ROOF PLAN**

DATE	15.10.1012	PROJECT No.	
SCALE	1:500 @ A1	<b>12197</b>	
DRAWN	SBA	DWG No.	DA - 06
CHECKED		ISSUE	K
APPROVED			