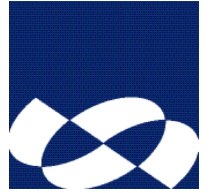


Waste Management Plan

Development Application



Project Wahroonga Adventist School
Fox Valley Road, Wahroonga NSW

Job No 1318.10

Date February 2015

Introduction

This Waste Management Plan has been prepared for the proposed Wahroonga Adventist School in support of the project's State Significant Development Application submitted to the Department of Planning & Infrastructure.

This plan outlines a general approach to waste management for the site and processes to be implemented for construction of the new school campus, and ongoing management of waste for the School. All statements and proposals documented in this plan are preliminary. The Waste Management Plan will be reviewed at the time of the awarding of the contract for the works to ensure alignment with the proposed methodologies, staging and sequencing of the preferred Contractor, and also by the School in the preparation of their waste management policy for the campus.

The Proposal

The Project comprises the construction of a new K-12 school campus and playing fields area, to be procured in stages. The School is proposed on two separate parcels of land being; School Lot 1 (the main campus) on Fox Valley Road, and School Lot 2 (the playing fields area) to the north.

Staging for the new School is proposed as follows;

STAGE 1 (Middle School):

Construction of a Middle School facility for the accommodation of Prep to Year 8 students, including;

- New Middle School building;
- Associated outdoor play space;
- Basement car parking and 'kiss & drop' facilities;
- Landscaping works.

STAGE 2 (Playing Area):

Construction of a new playing area (west portion of School Lot 2) including;

- Open turfed playing area (unmarked);
- Associated retaining wall works;
- Landscaping works.

STAGE 3 (Junior School - East):

Construction of a Junior School facility for the accommodation of Prep to Year 12 students, including;

- New Junior School building;
- Associated outdoor play space;
- Basement car parking and 'Kiss & Drop' facilities;
- New access road adjoining Fox Valley Road;
- Landscaping works.

STAGE 4 (Stores, Amenities & PE Courts):

Construction of a new pavilion and playing courts area (east portion of School Lot 2) including;

- PE courts;
- Stores and amenities building;
- Associated retaining wall works;
- Landscaping works.

STAGE 5 (Junior School - West):

Construction of a Junior School wing to the Stage 3 facility for the accommodation of Prep to Year 12 students, including;

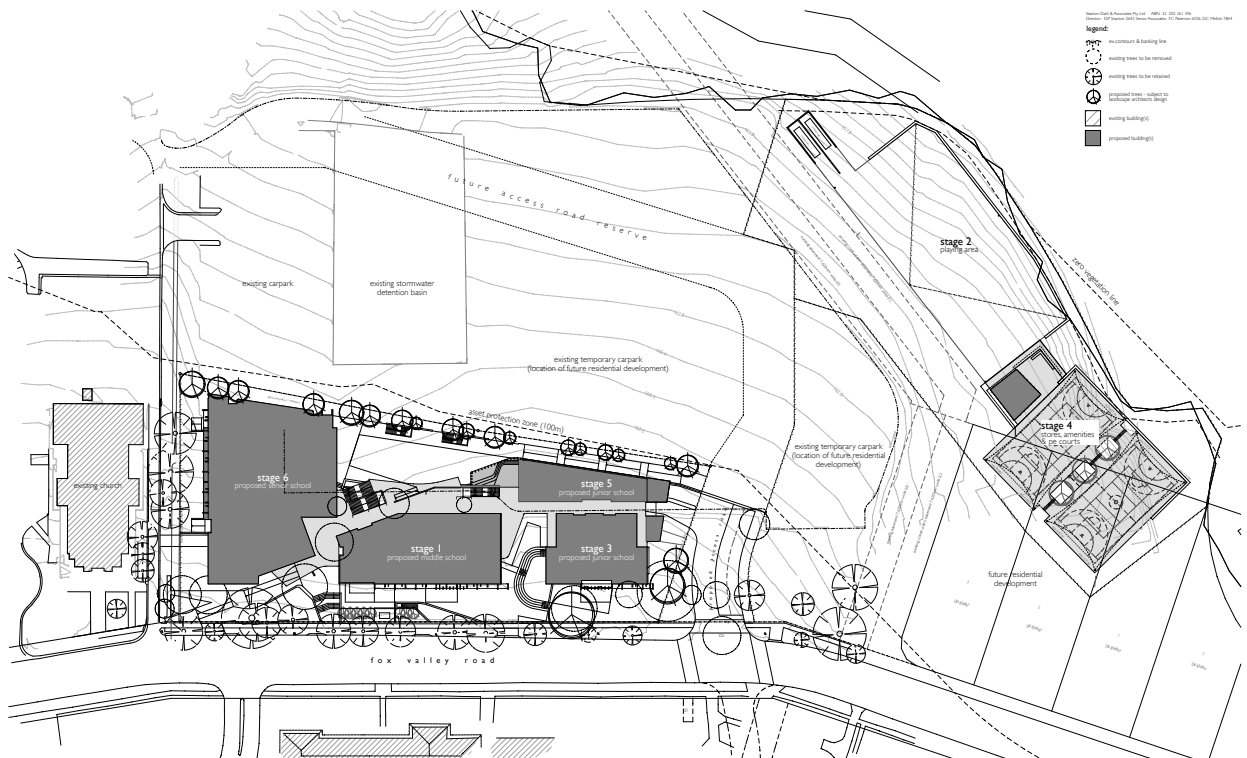
- New Junior School building wing;
- Associated outdoor play space;
- Landscaping works.

STAGE 6 (Senior School):

Construction of a School facility for the accommodation of Prep to Year 12 students, including;

- Removal of existing demountable classroom buildings;
- Construction of new Senior School building;
- Associated outdoor space;
- Basement car parking and 'Kiss & Drop' facilities;
- Landscaping works.

The proposed works comprise a total gross floor area of 8,158 sqm. The combined works have a capital investment value of \$39,327,000.



Demolition Stage

(Removal of Existing Demountable Classroom Buildings prior to Construction of Stage 6)

Materials on Site		Destination		
		Reuse and Recycling		Disposal
Type of Material	Estimated Quantity	On-Site	Off-Site	
Excavation Material	Nil			
Green Material	30m ³ (approx)	<u>Garden Mulch & Planting:</u> Building Contractor to store on-site for re-use in landscape works.		
Bricks	Nil			
Concrete	9m ³ (approx)		<u>Concrete Paving & Ramps etc:</u> Remove from site to be recycled. Building Contractor to specify recycling subcontractor.	
Timber	270 sqm (approx)	<u>Landscape Garden Walls & Edging:</u> Building Contractor to store on-site for re-use in landscape works.	<u>Timber Decking & Screening:</u> Demountable Building Contractor to remove from site to be re-used.	
Plasterboard			<i>Refer demountable building note under 'Other' below.</i>	
Metals	To be confirmed	<u>Basketball Hoops, Seating & Fencing:</u> Building Contractor to store on-site for re-location and re-use.	<u>Handrails:</u> Remove from site to be recycled. Building Contractor to specify recycling subcontractor.	
			<i>Refer demountable building note under 'Other' below.</i>	
Other	7.5m ³ (approx)		<u>Asphaltic Paving:</u> Remove from site to be recycled. Building Contractor to specify recycling subcontractor.	
	2 buildings		<u>Demountable Classroom Buildings:</u> Demountable Building Contractor to remove from site to be re-used / re-cycled as required.	

Construction Stage

Materials on Site		Destination		
		Reuse and Recycling		Disposal
Type of Material	Estimated Quantity	On-Site	Off-Site	
Excavation Material	13,585 m ³ (approx)	Topsoil retained by Building Contractor and stored on-site for re-use.	Surplus material to be removed from site for recycling. Building Contractor to specify recycling subcontractor.	
Green Material	20 trees	Mulch and store on-site for re-use in landscape works.	Surplus mulched material to be removed from site for recycling. Building Contractor to specify recycling subcontractor.	
Bricks	To be confirmed	Offcuts and waste to be re-used for fill where appropriate.	Surplus material to be removed from site for recycling. Building Contractor to specify recycling subcontractor.	
Concrete	To be confirmed	Waste to be re-used for fill where appropriate.	Surplus material to be removed from site for recycling. Building Contractor to specify recycling subcontractor.	
Timber	To be confirmed		Offcuts and waste material to be removed from site for recycling. Building Contractor to specify recycling subcontractor.	
Plasterboard	To be confirmed		Removed from site to be recycled. Building Contractor to specify recycling subcontractor.	
Metals	To be confirmed		Suitable offcuts and waste material to be removed from site for recycling. Building Contractor to specify recycling subcontractor.	Non-recyclable material to be removed to suitable landfill site to be specified by the Building Contractor.
Plastics	To be confirmed		Offcuts and waste material to be removed from site for recycling. Building Contractor to specify recycling subcontractor.	Non-recyclable material to be removed to suitable landfill site to be specified by the Building Contractor.
Other				

Use of Premises

Type of Waste to be Generated	Expected Volume per Week	Proposed On-Site Storage and Treatment Facilities	Destination
<i>Recyclables:</i>			
Cardboard Paper Glass Bottles Plastic Bottles	To be confirmed	Mobile waste receptacles located in appropriate internal and outdoor areas.	Collection by Waste Contractor appointed by the School.
Timber/Metal/Plastic/Fabric Offcuts and Waste (Design & Technology)	To be confirmed	Store in suitable receptacles in appropriate locations for re-use.	
<i>Non-Recyclables:</i>			
Food Waste Non-recyclable Waste	To be confirmed	Mobile waste receptacles located in appropriate internal and outdoor areas.	Collection by Waste Contractor appointed by the School.
Timber/Metal/Plastic/Fabric Offcuts and Waste (Design & Technology)	To be confirmed	Non re-useable surplus stored in appropriate receptacles for collection.	Collection by Waste Contractor appointed by the School.
Chemicals (Science)	To be confirmed	Non re-useable surplus stored in appropriate receptacles for collection.	Collection by appropriate Contractor appointed by the School.

Ongoing Management

Waste Management Policy	<p>The School will establish a waste management policy which will address waste and recycling issues for the new campus and playing fields. It is anticipated that this document will incorporate objectives for the sorting and separating of general and re-cyclable waste, with an emphasis on maximising the recycling of waste generated at the School.</p> <p>Employees, management and maintenance staff will be informed regarding the objectives and procedures relating to the waste management policy to be implemented.</p>
Waste Collection	<p>Designated mobile waste receptacles will be located in appropriate internal and outdoor areas within the campus for the collection of both general and recyclable waste. Mobile waste receptacles will be gathered by the staff member and/or caretaker responsible and assembled at specified a collection point(s) to be serviced by a Waste Contractor appointed by the School.</p> <p>Responsibility for the upkeep and monitoring of the campus grounds will be carried out by responsible staff members and/or employees as appointed by the School under the waste management policy.</p>