

GRIMSHAW HDR

GRIMSHAW architects LAB ARCHITECTURE & BUILDING SERVICES

Office Sydney
 Telephone +612 9253 0200
 Address Level 3, 24 Hickson Road
 Sydney, NSW 2000, Australia
 www.grimshaw-architects.com

tel +1 (602) 552 7700 fax +1 (602) 522 7707
 3200 E CAMELBACK RD SUITE 250
 PHOENIX AZ 85018

INTELLECTUAL PROPERTY

© Copyright Grimshaw architects Pty limited. Unless otherwise agreed in writing, all rights to use this document are subject to payment in full of all Grimshaw charges; this document may only be used for the express purpose and project for which it has been created and delivered, as notified in writing by Grimshaw; and this document may not be otherwise used, or copied. Any unauthorised use of this document is at the user's sole risk and without limiting Grimshaws rights the user releases and indemnifies Grimshaw from and against all loss so arising

REV	DESCRIPTION	DATE
1	Preliminary Issue	01/08/12
2	Planning Preliminary Issue	26/08/12
3	For Coordination	29/08/12
4	For Coordination	21/09/12
5	Draft Planning Issue	26/08/12
6	State Significant Development Application	06/10/12
7	State Significant Development Application Addendum	22/03/13

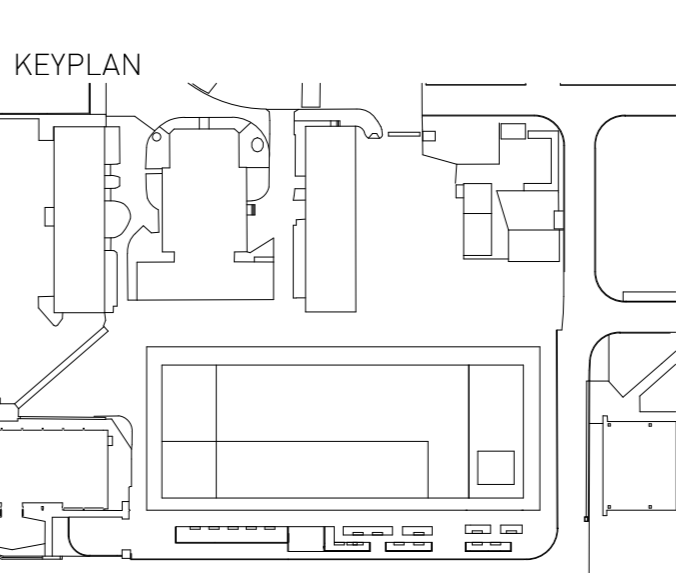
REV	DESCRIPTION	DATE

SERVICES
STEENSEN VARMING
 tel 02 9967 2200 fax 02 9967 2992
 LVL 8, 9 CASTLEREAGH ST SYDNEY NSW 2000

HYDRAULIC AND FIRE SERVICES
WARREN SMITH & PARTNERS
 tel 02 9299 1312 fax 02 9290 1295
 LVL 1, 123 CLARENCE ST SYDNEY NSW 2000

PROJECT MANAGER
Capital Insight Pty Ltd
 tel 02 9955 2300 fax 02 9955 5574
 77 BERRY ST NORTH SYDNEY NSW 2060

STRUCTURAL
TaylorThomsonWhitting
 tel 02 9439 7288 fax 02 9439 3146
 48 CHANDOS STREET ST LEONARDS NSW 2065



CLIENT
UNSW
 THE UNIVERSITY OF NEW SOUTH WALES
PROJECT
UNSW
 Materials Science and Engineering New Building

PROJECT NORTH TRUE NORTH
 GRAPHIC SCALE

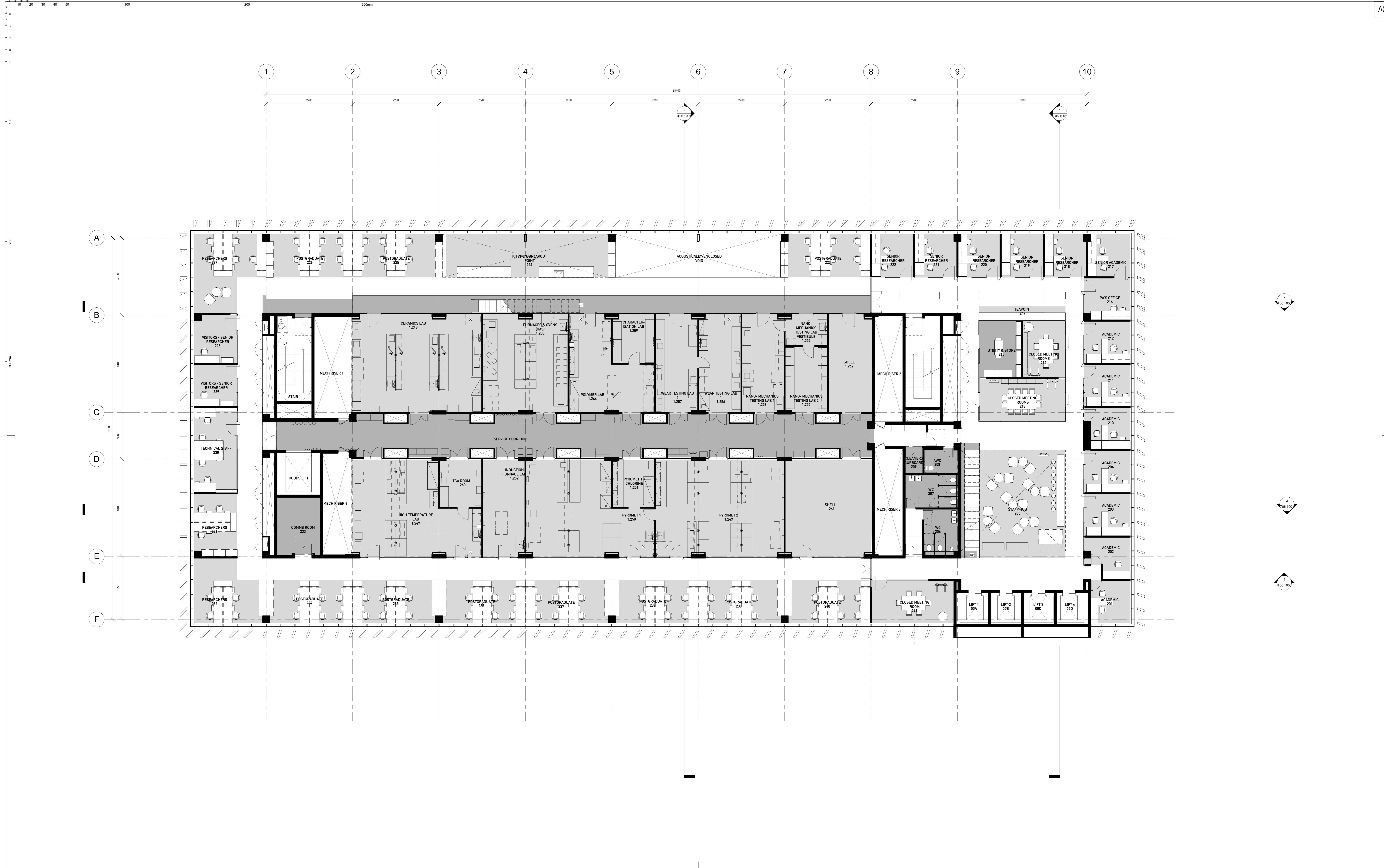
SCALE 1:100 at A0
 FIRST ISSUED 20/12/2012
 DO NO SCALE

STATUS
 FOR INFORMATION ONLY

DRAWING
GENERAL ARRANGEMENT PLAN - LEVEL 1

DRAWN BY **NJ** CHECKED **MJ** AUTHORISED **AM**

PROJECT NO. **T02 1004** DWG NO. **7**



GRIMSHAW HDR

GRIMSHAW architects LAB ARCHITECTURE & BUILDING SERVICES
 Office Sydney tel +1 (602) 552 7700 fax +1 (602) 522 7707
 Telephone +612 9253 0200 3200 E CAMELBACK RD SUITE 250
 Address Level 3, 24 Hickson Road PHOENIX AZ 85018
 Sydney, NSW 2000, Australia
 www.grimshaw-architects.com

INTELLECTUAL PROPERTY
 © Copyright Grimshaw architects Pty limited. Unless otherwise agreed in writing, all rights to use this document are subject to payment in full of all Grimshaw charges; this document may only be used for the express purpose and project for which it has been created and delivered, as notified in writing by Grimshaw; and this document may not be otherwise used, or copied. Any unauthorised use of this document is at the user's sole risk and without limiting Grimshaw's rights the user releases and indemnifies Grimshaw from and against all loss so arising

REV	DESCRIPTION	DATE
1	Preliminary Issue	01/08/12
2	Planning Preliminary Issue	26/08/12
3	For Coordination	29/08/12
4	For Coordination	21/09/12
5	Draft Planning Issue	28/08/12
6	State Significant Development Application	09/10/12
7	State Significant Development Application Addendum	22/03/13

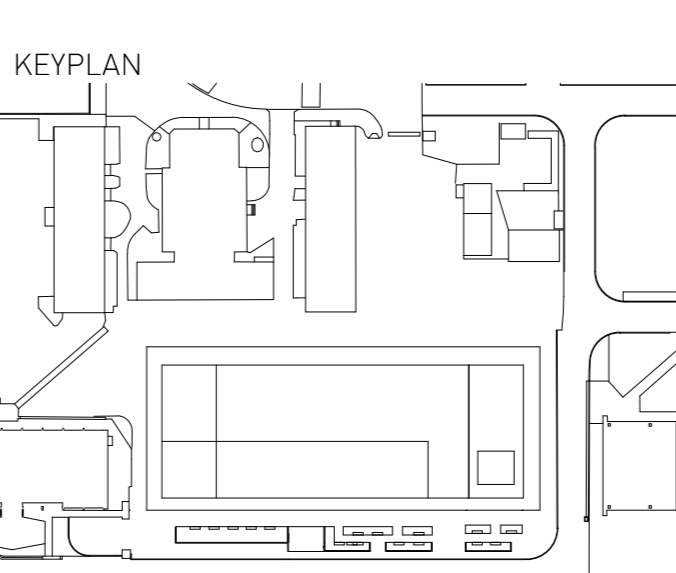
REV	DESCRIPTION	DATE

SERVICES
STEENSEN VARMING
 tel 02 9967 2200 fax 02 9967 2992
 LVL 8, 9 CASTLEREAGH ST SYDNEY NSW 2000

HYDRAULIC AND FIRE SERVICES
WARREN SMITH & PARTNERS
 tel 02 9299 1312 fax 02 9290 1295
 LVL 1, 123 CLARENCE ST SYDNEY NSW 2000

PROJECT MANAGER
Capital Insight Pty Ltd
 tel 02 9955 2300 fax 02 9955 5574
 77 BERRY ST NORTH SYDNEY NSW 2060

STRUCTURAL
TaylorThomsonWhitting
 tel 02 9439 7288 fax 02 9439 3146
 48 CHANDOS STREET ST LEONARDS NSW 2065



CLIENT
UNSW
 THE UNIVERSITY OF NEW SOUTH WALES
PROJECT
UNSW
 Materials Science and Engineering New Building

PROJECT NORTH TRUE NORTH
 GRAPHIC SCALE
 SCALE 1:100 at A0
 STATUS FOR INFORMATION ONLY

FIRST ISSUED 20/12/2012
 00 NO SCALE

DRAWING
GENERAL ARRANGEMENT PLAN - LEVEL 2

DRAWN BY **NJ** CHECKED **MJ** AUTHORISED **AM**

PROJECT NO. **T02 1005** DWG NO. **7** ISSUE