



**LIGHTING**

- D1 INTEGRATED CONTINUOUS LINEAR LUMINAIRE
- D2 INTEGRATED CONTINUOUS LINEAR LUMINAIRE
- EX1-REMOVED EXISTING LIGHTING POLE TO BE REMOVED
- EX2-REMOVED EXISTING LIGHTING POLE TO BE DISCUSSED AND CONFIRMED
- ⊗ EX3 EXISTING LOW-LEVEL FLOOD LIGHT TO BE DISCUSSED AND CONFIRMED
- EX4-REPLACED EXISTING LIGHTING POLE TO BE REPLACED
- EX5 EXISTING STREET LIGHT
- H1 HANDRAIL INTEGRATED LINEAR LUMINAIRE
- L1 INTEGRATED CONTINUOUS LINEAR LUMINAIRE
- L2 INTEGRATED CONTINUOUS LINEAR LUMINAIRE
- L3A IN-GROUND GRAZER LUMINAIRE 624MM
- L3B IN-GROUND GRAZER LUMINAIRE 324MM
- L4 INTEGRATED CONTINUOUS LINEAR LUMINAIRE
- L5 SURFACE MOUNTED BATTEN LUMINAIRE, WITH INTEGRAL EMERGENCY / BATTERY PACK
- L6 INTEGRATED CONTINUOUS LINEAR LUMINAIRE
- M1 450MM LANDSCAPE LIGHTING
- M2 800MM LANDSCAPE LIGHTING
- M3 2000-2500MM OUTDOOR FLOOR LAMP
- P1 COURT POLE
- S1 LED SMART AREA AND RECREATIONAL SPORTS LIGHTING
- ▽ SP2 LANDSCAPE ADJUSTABLE SPOTLIGHT
- W1 WALL RECESSED FLOOR WASHER LIGHT
- ▣ W3 WALL MOUNTED RECTANGULAR LUMINAIRE

**LIGHTING CONTROL**

- 🔌 SINGLE POLE LIGHT SWITCH
- 👁️ MOVEMENT DETECTOR (PASSIVE INFRARED) WALL MOUNTED
- ☉ PHOTOELECTRIC CELL

**LIGHTING POLE SCHEDULE**

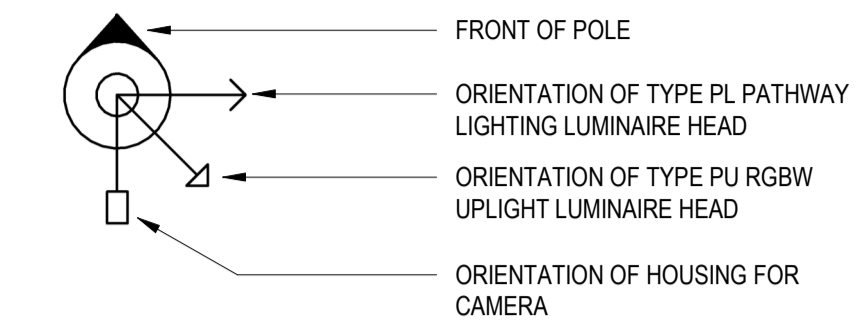
FOR THE POLE DETAILS AND SET-OUT REFER TO LIGHTING LAYOUT SHEETS L3001-L3007 AND DETAIL SHEET L1231.

PU = POLE UPLIGHT  
 PL = POLE PATHWAY LIGHTING  
 PC = POLE HOUSING FOR CCTV CAMERA  
 FURTHER INFORMATION REFER TO LUMINAIRE DATASHEETS.

HELP POINT = HELP POINT TO BE MOUNTED TO THE LIGHTING POLE. FOR DETAILS REFER TO SECURITY CONSULTANT DOCUMENTATIONS.  
 DRIVER = REMOTE CONTROL GEAR OF LINEAR LUMINAIRES IN PROXIMITY TO BE MOUNTED WITHIN THE LIGHTING POLE AS FOR INDICATIVE. FINAL LOCATIONS TO BE COORDINATED AND CONFIRMED IN CONSTRUCTION STAGE.

POLE #	HEIGHT ①	HEIGHT ②	HEIGHT ③	HEIGHT ④	HEIGHT ⑤	HEIGHT ⑥	OTHER
LP1			B: PL	H: PL			
LP2			A: PL	D: PL			
LP3			A: PL				
LP4			A: PL				
LP5			A: PL	G: PL			DRIVER
LP6			A: PL				
LP7			A: PL	E: PL			
LP8	H: PU	E: PU	A: PL	C: PL	B: PC	G: PC	
LP9	H: PU	D: PU	A: PL	C: PL			
LP10	H: PU	D: PU	A: PL	C: PL	E: PC	G: PC	
LP11			A: PL	F: PL	C: PC	G: PC	DRIVER
LP12			A: PL				
LP13	G: PU	C: PU	A: PL				
LP14			A: PL				
LP15			A: PL	B: PL	C: PC		
LP16			A: PL	H: PL			
LP17			A: PL				HELP POINT
LP18			A: PL		C: PC	G: PC	
LP19			A: PL				
LP20			A: PL				
LP21			A: PL		C: PC	G: PC	
LP22			A: PL				
LP23			H: PL	B: PL	C: PC	G: PC	
LP24			A: PL		B: PC		
LP25			A: PL				
LP26			A: PL				DRIVER
LP27			A: PL	G: PL			
LP28	H: PU	D: PU	A: PL				DRIVER
LP29	B: PU	F: PU	A: PL				DRIVER
LP30			A: PL	H: PL	G: PC		
LP31			A: PL				
LP32			A: PL	G: PL			
LP33			A: PL				
LP34	D: PU	F: PU	H: PL	B: PL			
LP35			A: PL				
LP36			H: PL	B: PL			
LP37	C: PU	F: PU	A: PL		G: PC		
LP38			A: PL				
LP39			A: PL				
LP40			A: PL				DRIVER
LP41			A: PL				DRIVER
LP42			A: PL	C: PL			DRIVER
LP43	C: PU	G: PU	A: PL				DRIVER
LP44	C: PU	G: PU	A: PL				DRIVER
LP45			A: PL				DRIVER
LP46			A: PL				DRIVER
LP47			A: PL				DRIVER
LP48			A: PL	C: PL	E: PL		
LP49			B: PL	G: PL	A: PC		
LP50			A: PL	C: PL			
LP51			A: PL				
LP52			A: PL				

**LIGHTING POLE SYMBOL**

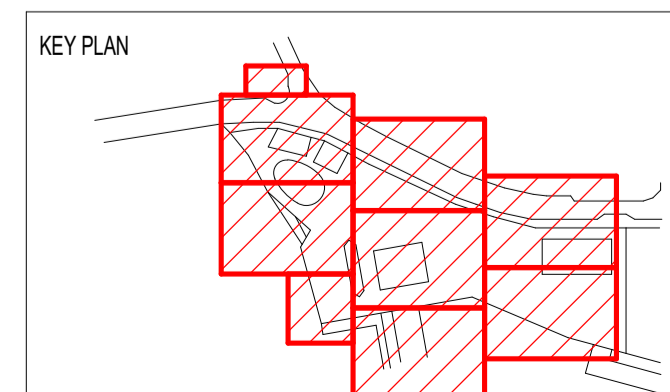


**SECURITY**

- 📷 90 DEGREE DOME CAMERA
- 📷 270 DEGREE DOME CAMERA
- 📷 360 DEGREE DOME CAMERA
- 📺 EXISTING CLOSE CIRCUIT TELEVISION CAMERA
- 📍 HP HELP POINT INTEGRATED TO LIGHTING POLE

DESIGNED UNDER QUALITY SYSTEM CERTIFIED AS COMPLYING WITH ISO 9001 BY AN ACCREDITED CERTIFICATION BODY  
© Copyright. This Document and Design remains the copyright of Steensen Varming (Australia) Pty Ltd and cannot be reproduced in any way without prior consent. The contractor shall verify all dimensions and levels on site as this is not a workshop drawing. The contractor shall refer any discrepancies to the engineer before proceeding with the work. This drawing shall be read in conjunction with other contract documents, drawings and project specifications. This file has been checked by an antivirus program with the latest update. However new viruses are discovered everyday we recommend that this file is rescaned upon receipt.

REV	DESCRIPTION	DATE
A	TENDER ISSUE	27/02/2025
B	REVISED TENDER ISSUE	22/08/2025
C	REVISED TENDER ISSUE	04/09/2025
D	UPDATE FOR MODIFICATION	07/11/2025



Copenhagen  
 London  
 Sydney  
 Canberra  
 Hong Kong  
 New York

Level 8, 9 Castlereagh St.  
 Sydney, NSW, 2000, Australia  
 ABN 50 001 189 037  
 t : +61 / 02 9967 2200  
 e : info@steensenvarming.com

**STEENSEN VARMING**

PROJECT  
**BANK STREET PARK  
 BANK STREET, PYRMONT**

DRAWING TITLE  
**LIGHTING DESIGN  
 LEGEND**

DATE	DRAWN	DESIGNED	CHECKED	APPROVED	SCALE
07/11/2025	AS	MR/AS	MR	MR	

NORTHPOINT	PROJECT No.	DRAWING No.	REVISION
	247095	L-1001	D

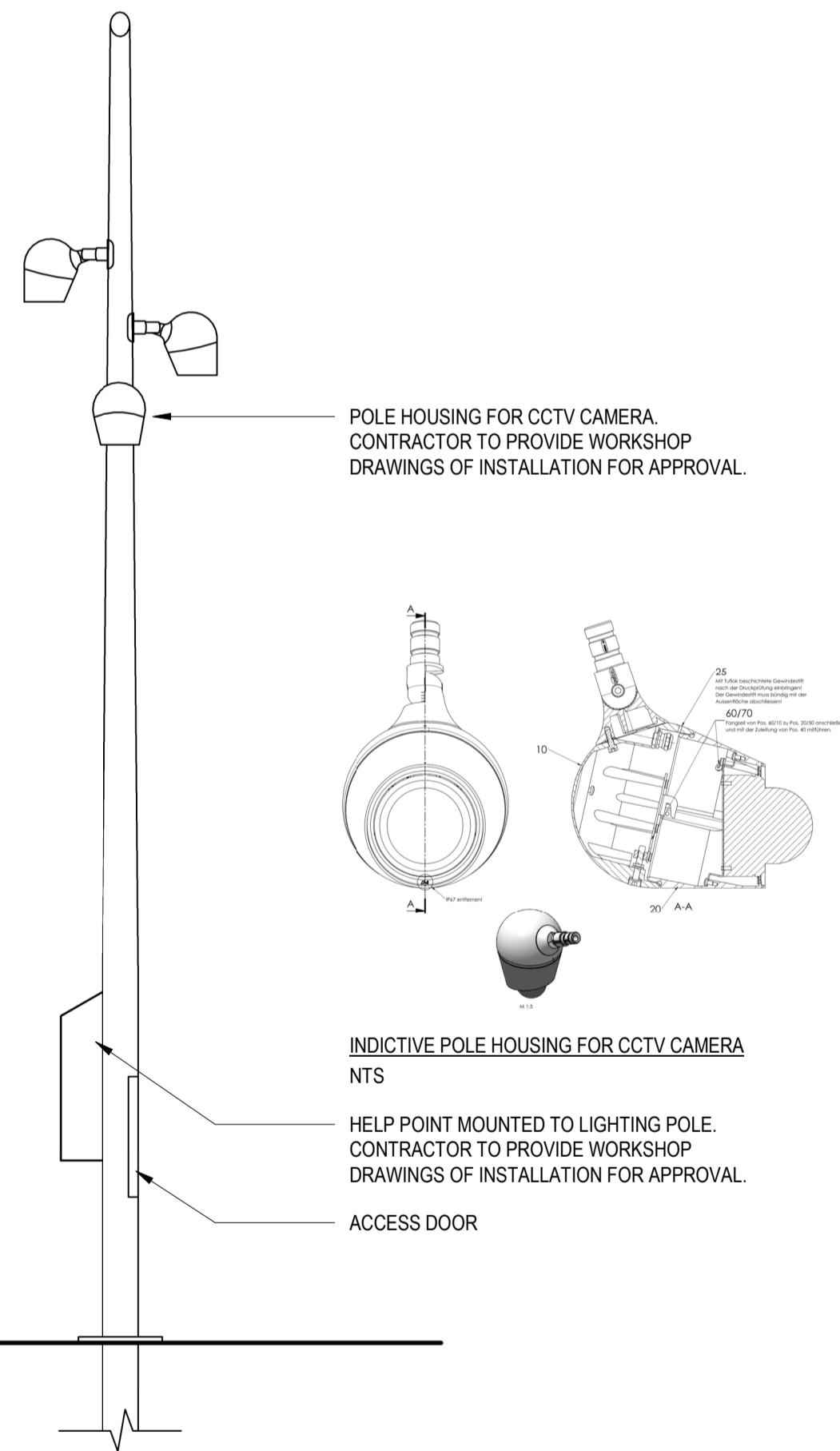
**TENDER**

A1  
Autodesk.Dwg257/247095 - Bank Street Park (247095-SV-XXXXXX)A1-L001.rvt

**NOTE:**

SECURITY DESIGN AND CALCULATIONS HAVE BEEN CARRIED OUT BY CORE42. PLEASE REFER TO CORE42 DOCUMENTATION FOR DESIGN DETAILS AND REQUIREMENTS. THIS DRAWING HAS BEEN PRODUCED FOR THE PURPOSE OF INTEGRATION OF SECURITY AND LIGHTING DESIGN ONLY, INTEGRATING THE CAMERA TYPES AND POSITIONS INTO THE OVERALL DESIGN, WHICH ARE BASED ON THE SECURITY CONSULTANT CORE42 DRAWINGS AND SPECIFICATIONS.

CORE42 SECURITY LAYOUTS TAKE PRECEDENCE.



2 POLE INTEGRATED CCTV CAMERA

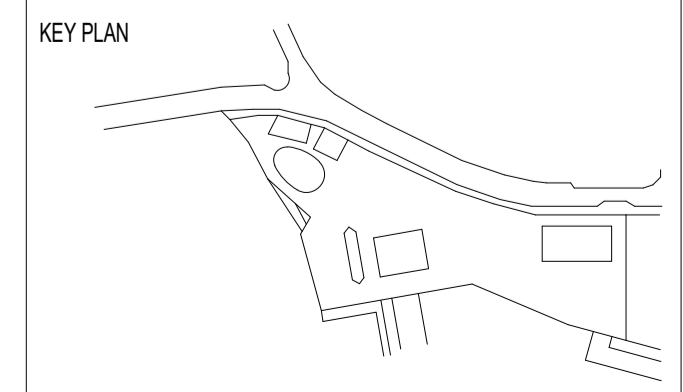
1 SECURITY LAYOUT  
1 : 400

DESIGNED UNDER QUALITY SYSTEM CERTIFIED AS COMPLYING WITH ISO 9001 BY AN ACCREDITED CERTIFICATION BODY

© Copyright. This Document and Design remains the copyright of Steensen Varming (Australia) Pty Ltd and cannot be reproduced in any way without prior consent. The contractor shall verify all dimensions and levels on site as this is not a workshop drawing. The contractor shall refer any discrepancies to the engineer before proceeding with the work. This drawing shall be read in conjunction with other contract documents, drawings and project specifications. This file has been checked by an antivirus program with the latest update. However new viruses are discovered everyday we recommend that this file is rescanned upon receipt.

**TENDER**

AMENDMENTS		
REV	DESCRIPTION	DATE
A	TENDER ISSUE	27/02/2025
B	REVISED TENDER ISSUE	22/08/2025
C	REVISED TENDER ISSUE	04/09/2025
D	UPDATE FOR MODIFICATION	07/11/2025



Copenhagen  
London  
Sydney  
Canberra  
Hong Kong  
New York

Level 8, 9 Castlereagh St.  
Sydney, NSW, 2000, Australia  
ABN 50 001 189 037  
t : +61 / 02 9967 2200  
e : info@steensenvarming.com

**STEENSEN VARMING**

PROJECT  
**BANK STREET PARK  
BANK STREET, PYRMONT**

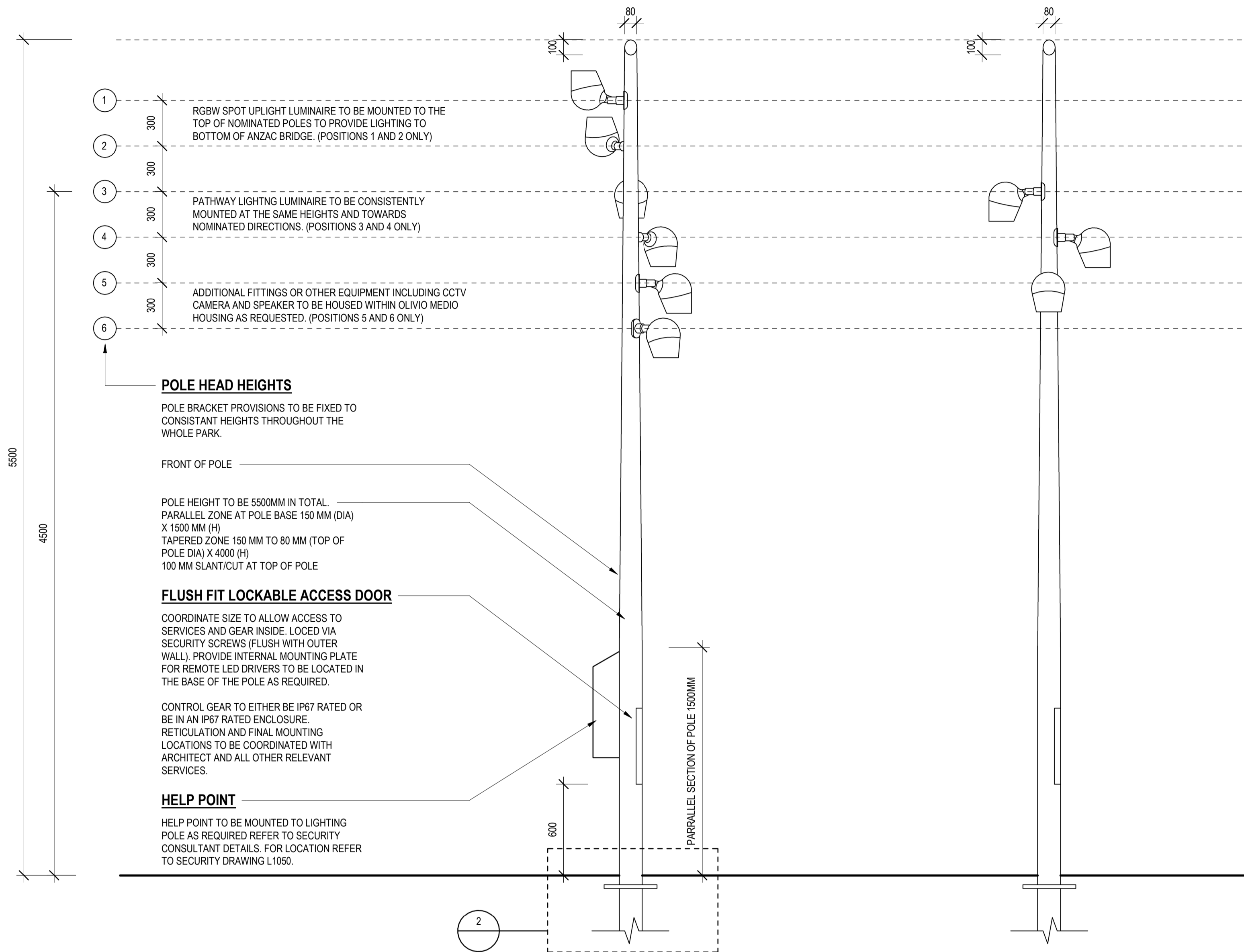
DRAWING TITLE  
**LIGHTING DESIGN  
SITE PLAN - SECURITY**

0					<b>A1</b>
DATE	DRAWN	DESIGNED	CHECKED	APPROVED	SCALE
07/11/2025	AS	CL	MR	MR	As indicated
NORTHPOINT	PROJECT No.	DRAWING No.	REVISION		
	247095	L-1050	D		

Autodesk Docs/247095 - Bank Street Park (247095-SVXXX3X104-L001.rvt)

**POLE HEAD POSITIONS**

**TYPICAL POLE**



**POLE HEAD HEIGHTS**

POLE BRACKET PROVISIONS TO BE FIXED TO CONSISTANT HEIGHTS THROUGHOUT THE WHOLE PARK.

FRONT OF POLE

POLE HEIGHT TO BE 5500MM IN TOTAL. PARALLEL ZONE AT POLE BASE 150 MM (DIA) X 1500 MM (H). TAPERED ZONE 150 MM TO 80 MM (TOP OF POLE DIA) X 4000 (H). 100 MM SLANT/CUT AT TOP OF POLE.

**FLUSH FIT LOCKABLE ACCESS DOOR**

COORDINATE SIZE TO ALLOW ACCESS TO SERVICES AND GEAR INSIDE. LOCED VIA SECURITY SCREWS (FLUSH WITH OUTER WALL). PROVIDE INTERNAL MOUNTING PLATE FOR REMOTE LED DRIVERS TO BE LOCATED IN THE BASE OF THE POLE AS REQUIRED.

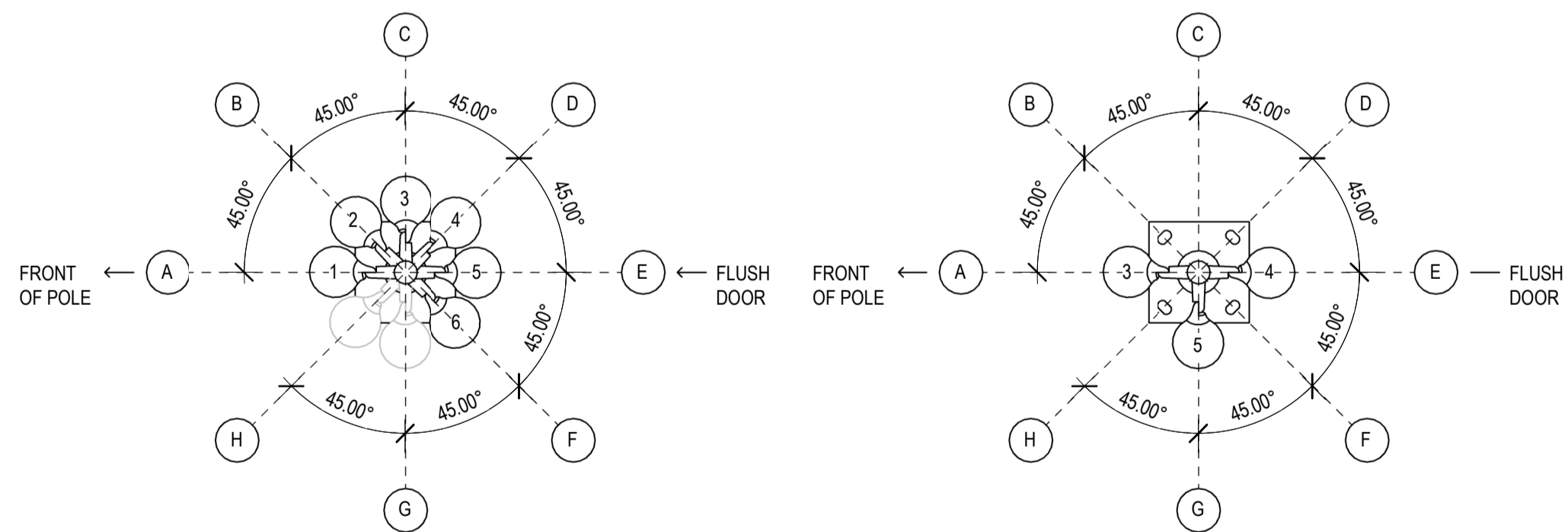
CONTROL GEAR TO EITHER BE IP67 RATED OR BE IN AN IP67 RATED ENCLOSURE. RETICULATION AND FINAL MOUNTING LOCATIONS TO BE COORDINATED WITH ARCHITECT AND ALL OTHER RELEVANT SERVICES.

**HELP POINT**

HELP POINT TO BE MOUNTED TO LIGHTING POLE AS REQUIRED REFER TO SECURITY CONSULTANT DETAILS. FOR LOCATION REFER TO SECURITY DRAWING L1050.

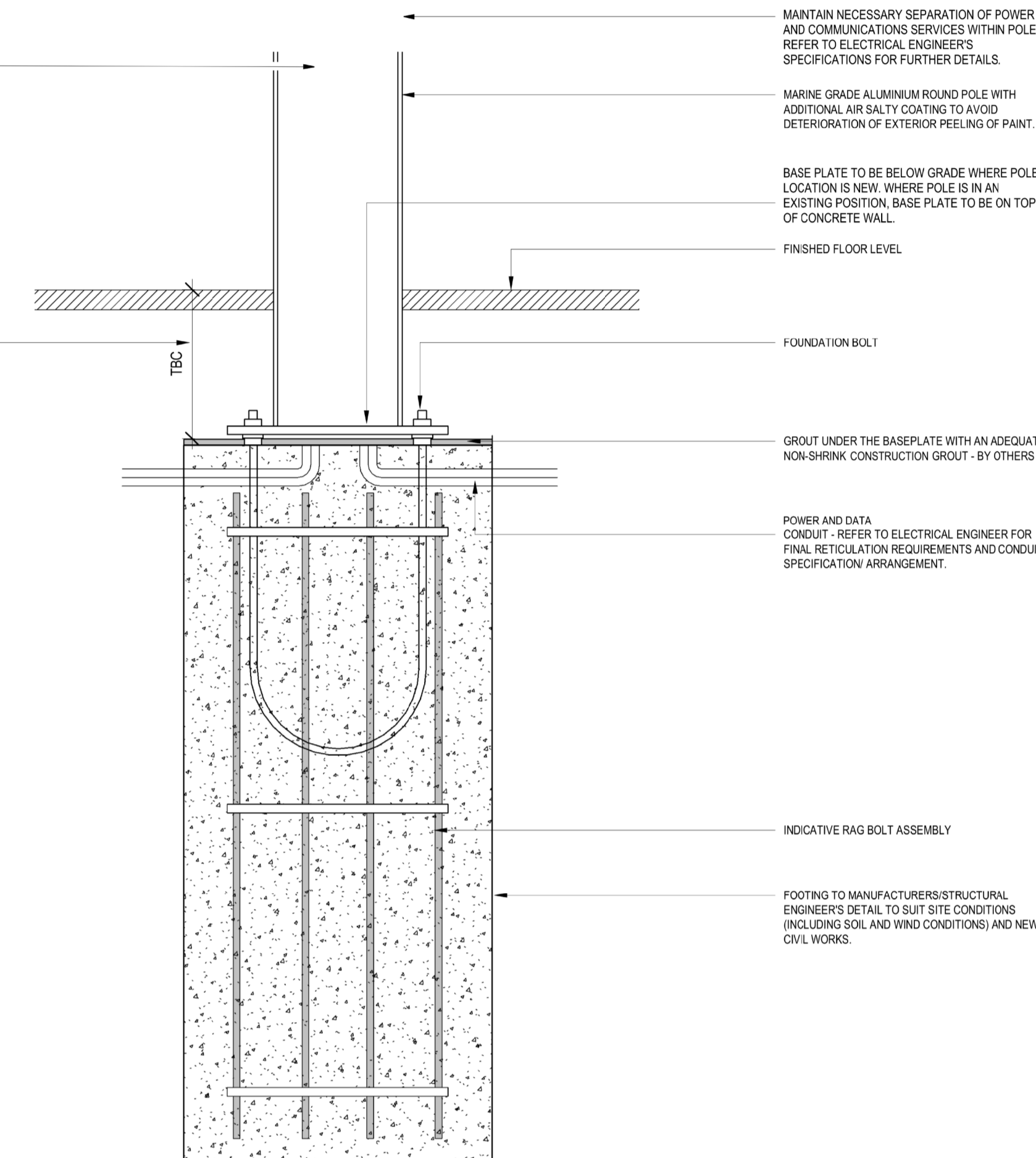
**POLE HEAD ORIENTATIONS**

LOCATION OF LUMINAIRES AND OTHER EQUIPMENT (GOBO/SPOT UPLIGHT, CCTV CAMERA, SPEAKER) IN NOMINATED LOCATIONS ON INCREMENTS OF 45° (TYPICAL FOR ALL POLE).



REMOTE CONTROL GEARS FOR ALL POLE MOUNTED PATHWAY LIGHTING LUMINAIRES (AND OTHER EQUIPMENT IF REQUIRED) TO BE LOCATED IN BASE OF POLE AND ACCESSIBLE VIA FLUSH FIT LOCKABLE ACCESS DOOR. PROVIDE INTERNAL MOUNTING PLATE FOR REMOTE LED DRIVERS TO BE LOCATED IN THE BASE OF THE POLE AS REQUIRED. ALL CONTROL GEAR AND SERVICES TO EITHER BE IP67 RATED OR BE IN AN IP67 RATED ENCLOSURE. RETICULATION AND FINAL MOUNTING LOCATIONS TO BE COORDINATED WITH ARCHITECT AND ALL OTHER RELEVANT SERVICES.

LOCATION: FINAL DEPTH BELOW GRADE AND TOTAL POLE HEIGHT TO SUIT FINAL RAG BOLT ASSEMBLY BY STRUCTURAL ENGINEER. NOMINATED 90MM SET DOWN TO BE APPROVED IN SHOP DRAWINGS PRIOR TO MANUFACTURE.



MAINTAIN NECESSARY SEPARATION OF POWER AND COMMUNICATIONS SERVICES WITHIN POLE. REFER TO ELECTRICAL ENGINEER'S SPECIFICATIONS FOR FURTHER DETAILS.

MARINE GRADE ALUMINIUM ROUND POLE WITH ADDITIONAL AIR SALTY COATING TO AVOID DETERIORATION OF EXTERIOR PEELING OF PAINT.

BASE PLATE TO BE BELOW GRADE WHERE POLE LOCATION IS NEW. WHERE POLE IS IN AN EXISTING POSITION, BASE PLATE TO BE ON TOP OF CONCRETE WALL.

FINISHED FLOOR LEVEL

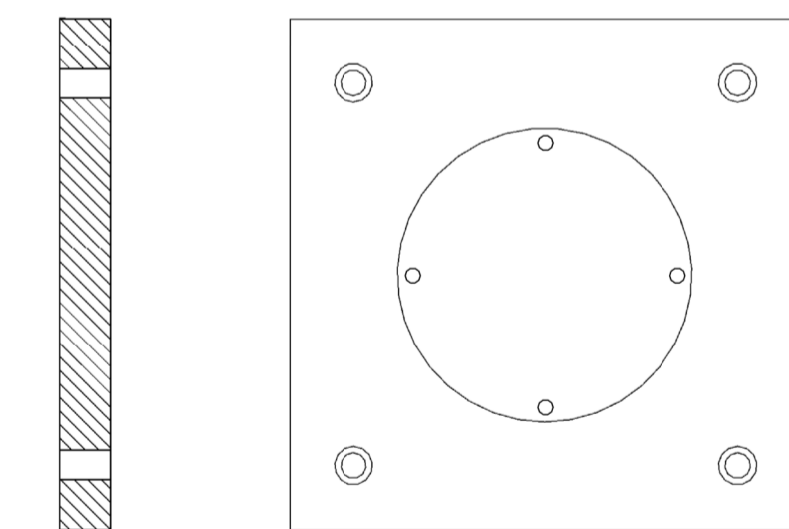
FOUNDATION BOLT

GROUT UNDER THE BASEPLATE WITH AN ADEQUATE NON-SHRINK CONSTRUCTION GROUT - BY OTHERS

POWER AND DATA CONDUIT - REFER TO ELECTRICAL ENGINEER FOR FINAL RETICULATION REQUIREMENTS AND CONDUIT SPECIFICATION ARRANGEMENT.

INDICATIVE RAG BOLT ASSEMBLY

FOOTING TO MANUFACTURERS/STRUCTURAL ENGINEER'S DETAIL TO SUIT SITE CONDITIONS (INCLUDING SOIL AND WIND CONDITIONS) AND NEW CIVIL WORKS.



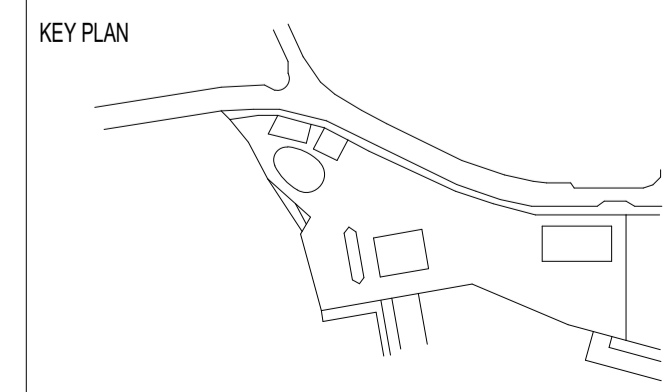
**1 LIGHTING POLE ARRANGEMENT**  
1 : 20

REFER TO POLE SCHEDULE ON LEGEND DRAWING FOR INDIVIDUAL POLE ARRANGEMENTS

**2 INDICATIVE POLE FOOTING AND BASE PLATE DETAIL**

DESIGNED UNDER QUALITY SYSTEM CERTIFIED AS COMPLYING WITH ISO 9001 BY AN ACCREDITED CERTIFICATION BODY  
© Copyright. This Document and Design remains the copyright of Steensen Varming (Australia) Pty Ltd and cannot be reproduced in any way without prior consent. The contractor shall verify all dimensions and levels on site as this is not a workshop drawing. The contractor shall refer any discrepancies to the engineer before proceeding with the work. This drawing shall be read in conjunction with other contract documents, drawings and project specifications. This file has been checked by an antivirus program with the latest update. However new viruses are discovered everyday we recommend that this file is rescanned upon receipt.

REV	DESCRIPTION	DATE
A	TENDER ISSUE	27/02/2025
B	REVISED TENDER ISSUE	22/08/2025
C	REVISED TENDER ISSUE	04/09/2025
D	UPDATE FOR MODIFICATION	07/11/2025



Copenhagen  
London  
Sydney  
Canberra  
Hong Kong  
New York

Level 8, 9 Castlereagh St.  
Sydney, NSW, 2000, Australia  
ABN 50 001 189 037  
t : +61 / 02 9967 2200  
e : info@steensenvarming.com

**STEENSEN VARMING**

PROJECT  
**BANK STREET PARK  
BANK STREET, PYRMONT**

DRAWING TITLE  
**LIGHTING DESIGN  
LIGHTING DETAIL - SHEET 01**

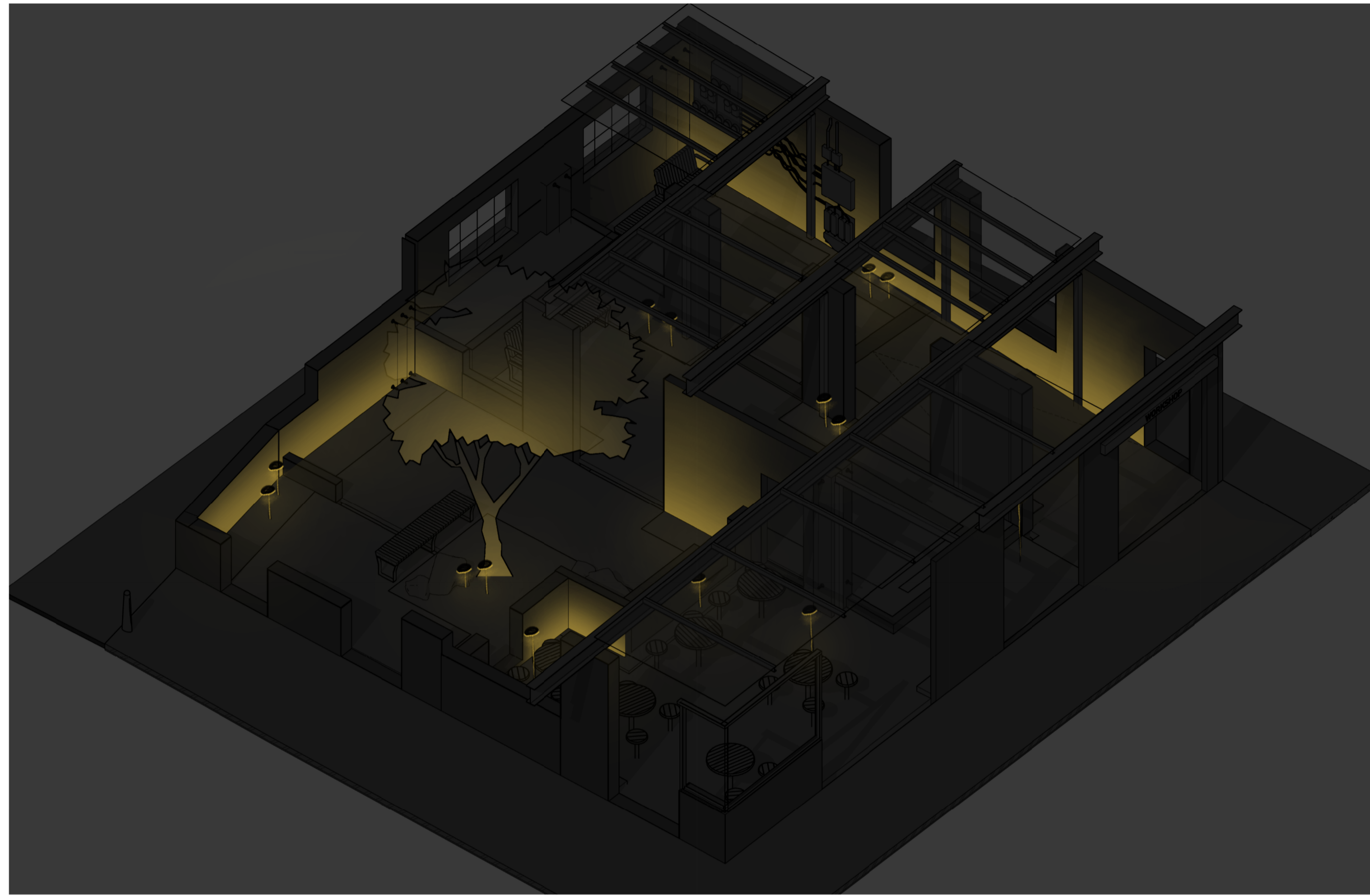
DATE	DRAWN	DESIGNED	CHECKED	APPROVED	SCALE
07/11/2025	AS	MR/AS	MR	MR	

NORTHPOINT	PROJECT No.	DRAWING No.	REVISION
	247095	L-1231	D

**TENDER**

**A1**  
Autodesk Docset/247095 - Bank Street Park (247095-SVXXXXXL01-L001.rvt)





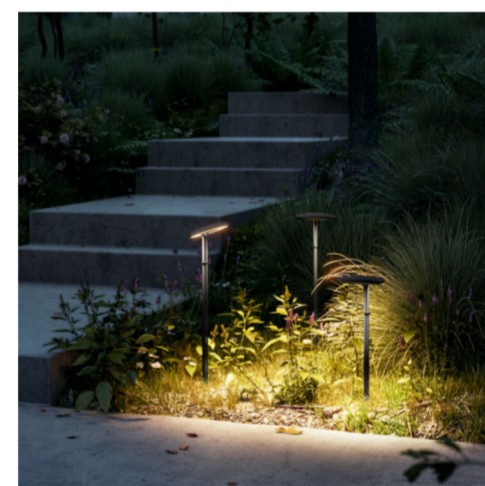
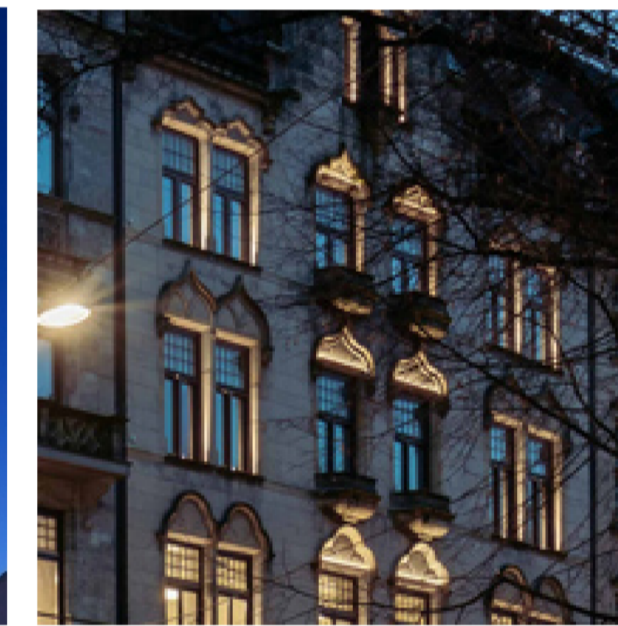
1 INDICATIVE INTERPRETIVE GARDEN LIGHTING RENDER



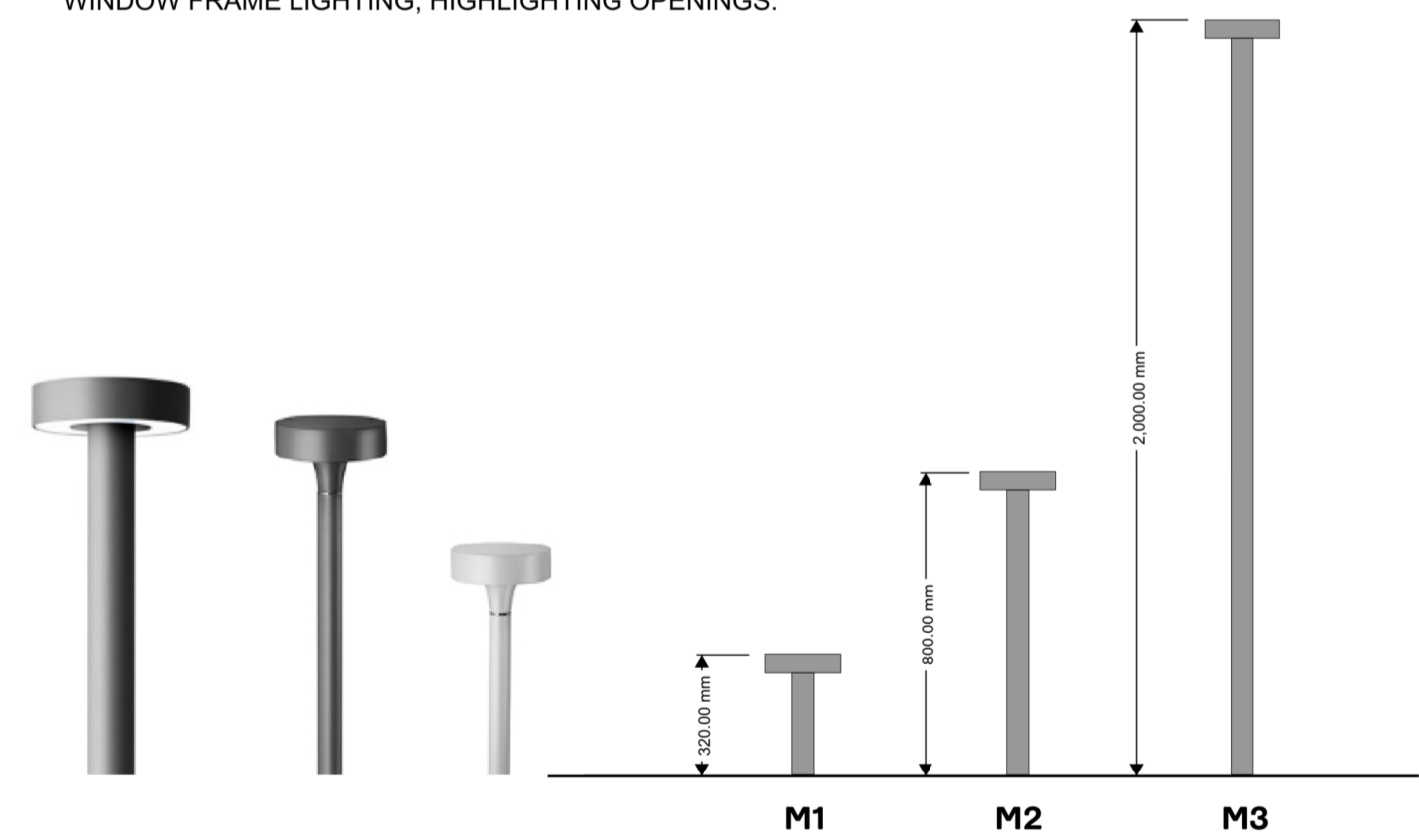
SOFT WALL GRAZING OF EXISTING LOW HEIGHT WALLS TO ENHANCE THE STRUCTURE AND PROVIDE DIRECTION.



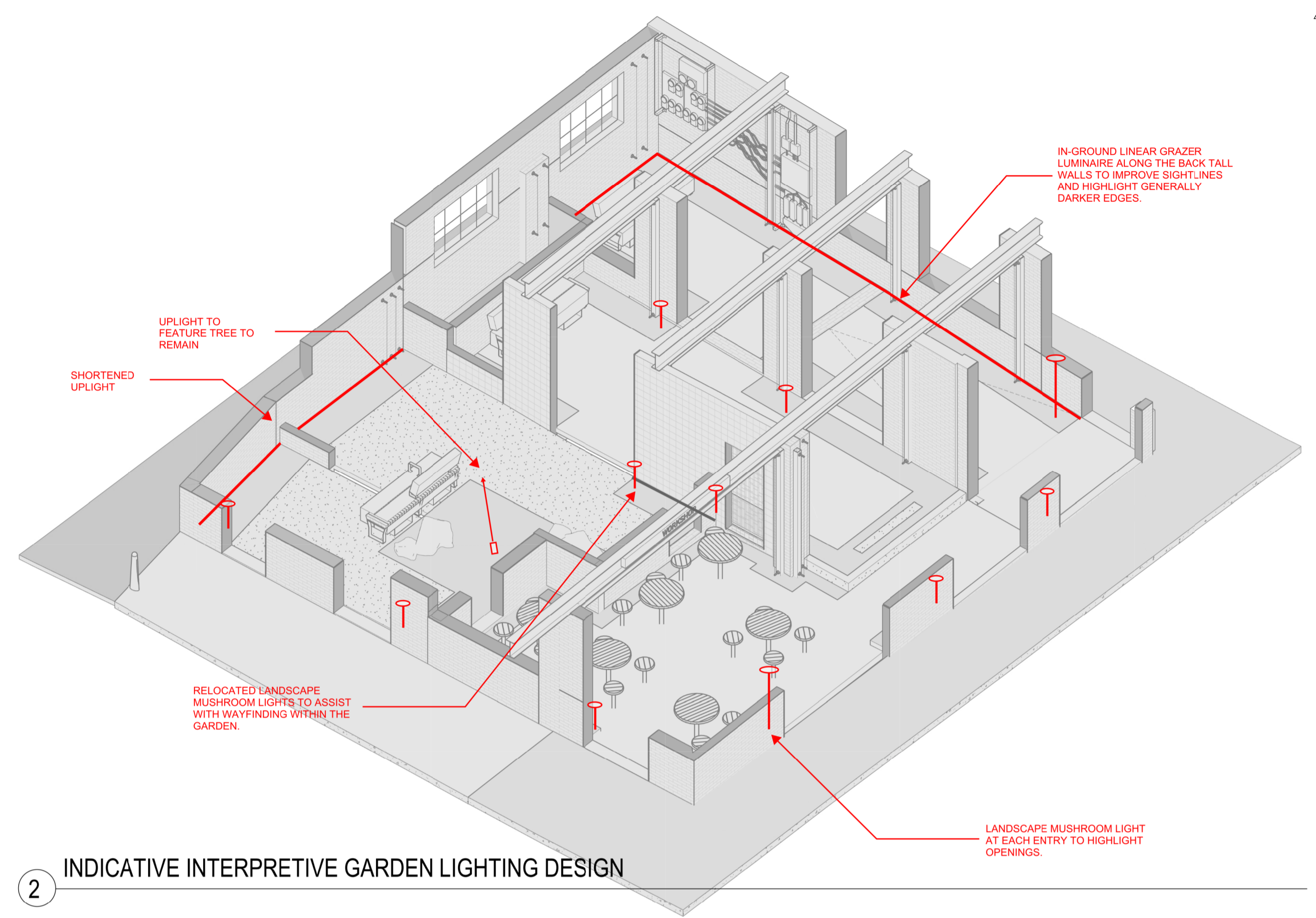
WINDOW FRAME LIGHTING, HIGHLIGHTING OPENINGS.



FAMILY OF LUMINAIRES AT DIFFERENT HEIGHT, PROVIDING POOLS OF LIGHT AND FOCAL POINTS TO DEATING AS WELL AS LANDSCAPE AREAS.



MUSHROOM LIGHTING SERIES  
TABLE LAMP, LANDSCAPE LIGHTING AND OUTDOOR FLOOR LAMP



2 INDICATIVE INTERPRETIVE GARDEN LIGHTING DESIGN

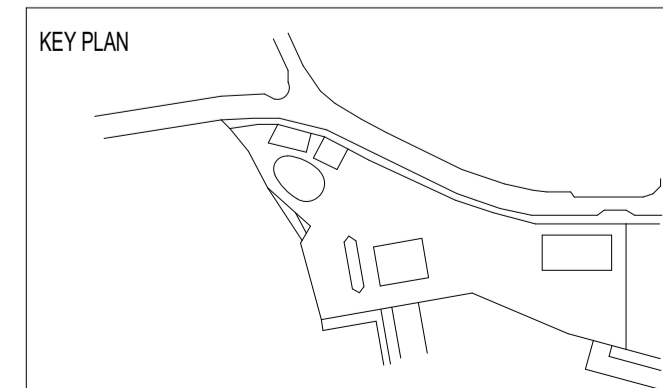


3 INTERPRETIVE GARDEN LIGHTING LAYOUT

1: 100

DESIGNED UNDER QUALITY SYSTEM CERTIFIED AS COMPLYING WITH ISO 9001 BY AN ACCREDITED CERTIFICATION BODY  
© Copyright. This Document and Design remains the copyright of Steensen Varming (Australia) Pty Ltd and cannot be reproduced in any way without prior consent. The contractor shall verify all dimensions and levels on site as this is not a workshop drawing. The contractor shall refer any discrepancies to the engineer before proceeding with the work. This drawing shall be read in conjunction with other contract documents, drawings and project specifications. This file has been checked by an antivirus program with the latest update. However new viruses are discovered everyday we recommend that this file is rescanned upon receipt.

AMENDMENTS		
REV	DESCRIPTION	DATE
A	TENDER ISSUE	27/02/2025
B	REVISED TENDER ISSUE	22/08/2025
C	REVISED TENDER ISSUE	04/09/2025
D	UPDATE FOR MODIFICATION	07/11/2025



Copenhagen  
London  
Sydney  
Canberra  
Hong Kong  
New York

Level 8, 9 Castlereagh St.  
Sydney, NSW, 2000, Australia  
ABN 50 001 189 037  
t: +61 / 02 9967 2200  
e: info@steensenvarming.com

**STEENSEN VARMING**

PROJECT  
**BANK STREET PARK  
BANK STREET, PYRMONT**

DRAWING TITLE  
**LIGHTING DESIGN  
LIGHTING - INTERPRETIVE GARDEN DETAILS**

DATE	DRAWN	DESIGNED	CHECKED	APPROVED	SCALE
07/11/2025	AS	MR/AS	MR	MR	
NORTHPOINT	PROJECT No.	DRAWING No.	REVISION		
	247095	L-1233	D		

TENDER

A1

Autodesk Docs/247095 - Bank Street Park /247095-SVXXX/04/04/2025-0001.rvt



**TARGETTED ILLUMINANCE**

LIGHTING FOR PATHWAY IN ACCORDANCE WITH AS/NZS 1158.3.1:2020 CATEGORY PP2, PP3 AND PP4

- PATHWAY - PP2
- PATHWAY - PP3
- PATHWAY - PP4

AVERAGE HORIZONTAL ILLUMINANCE (lx)	POINT HORIZONTAL ILLUMINANCE (lx)	ILLUMINANCE (HORIZONTAL) UNIFORMITY (max/avg)	POINT VERTICAL ILLUMINANCE (lx)	PATHWAY SURROUND ILLUMINANCE (lx)
7	1	5	0.3	0.5
3	0.5	5	0.1	0.25
1.5	0.25	5	0.05*	0.12

\* LIGHTING STRATEGY BASED ON HORIZONTAL ILLUMINANCE ONLY (LOW-LEVEL LIGHTING WITH MOUNTING HEIGHTS OF 1.5M OR LESS)

LIGHTING FOR CONNECTION ELEMENTS IN ACCORDANCE WITH AS/NZS 1158.3.1:2020 CATEGORY PE3\*

- STAIRCASE - PE3

LIGHTING SUBCATEGORY	AVERAGE HORIZONTAL ILLUMINANCE (lx)	POINT HORIZONTAL ILLUMINANCE (lx)	ILLUMINANCE (HORIZONTAL) UNIFORMITY (max/avg)	POINT VERTICAL ILLUMINANCE (lx)**
ABUT PP3	3	0.5	5	0.1

\* SAME FOR HIGHEST LIGHTING SUBCATEGORY APPLYING TO AREAS THAT ABUT THE CONNECTING ELEMENT BUT, WHERE FORMING PART OF A ROAD OR PATHWAY, TO BE NOT LESS THAN SUBCATEGORY PP3.  
 \*\*LIGHTING STRATEGY BASED ON HORIZONTAL ILLUMINANCE ONLY (LOW-LEVEL LIGHTING WITH MOUNTING HEIGHTS OF 1.5M OR LESS)

LIGHTING FOR SPORTS IN ACCORDANCE WITH AS/NZS 2560.2: 2021\*

- SPORT COURT

AVERAGE HORIZONTAL MAINTAINED ILLUMINANCE	MINIMUM HORIZONTAL UNIFORMITY (U1)	MINIMUM HORIZONTAL UNIFORMITY (U2)	MAXIMUM GLARE RATING (GR)	MINIMUM COLOUR RENDERING INDEX (Ra)
100	0.5	0.3	50	65

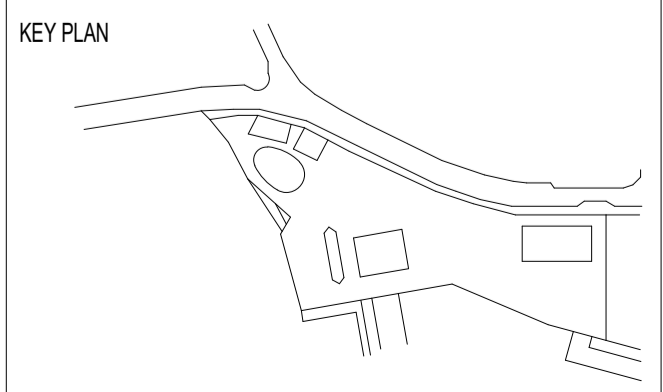
\* BASED ON COMPLIANCE FOR BASKETBALL: RECREATION OR TRAINING, AND LOW-LEVEL LOCAL COMPETITION

- EXISTING
- OUT OF SCOPE

AREA WITH EXISTING LUMINAIRES. SOME EXISTING POST TOP LUMINAIRES TO REMAIN FOR NIGHT-TIME LIGHTING.

DESIGNED UNDER QUALITY SYSTEM CERTIFIED AS COMPLYING WITH ISO 9001 BY AN ACCREDITED CERTIFICATION BODY  
 © Copyright. This Document and Design remains the copyright of Steensen Varming (Australia) Pty Ltd and cannot be reproduced in any way without prior consent. The contractor shall verify all dimensions and levels on site as this is not a workshop drawing. The contractor shall refer any discrepancies to the engineer before proceeding with the work. This drawing shall be read in conjunction with other contract documents, drawings and project specifications. This file has been checked by an antivirus program with the latest update. However new viruses are discovered everyday we recommend that this file is rescanned upon receipt.

AMENDMENTS		
REV	DESCRIPTION	DATE
A	TENDER ISSUE	27/02/2025
B	REVISED TENDER ISSUE	22/08/2025
C	REVISED TENDER ISSUE	04/09/2025
D	UPDATE FOR MODIFICATION	07/11/2025



Copenhagen  
 London  
 Sydney  
 Canberra  
 Hong Kong  
 New York

Level 8, 9 Castlereagh St.  
 Sydney, NSW, 2000, Australia  
 ABN 50 001 189 037  
 t : +61 / 02 9967 2200  
 e : info@steensenvarming.com

**STEENSEN VARMING**

PROJECT  
**BANK STREET PARK**  
**BANK STREET, PYRMONT**

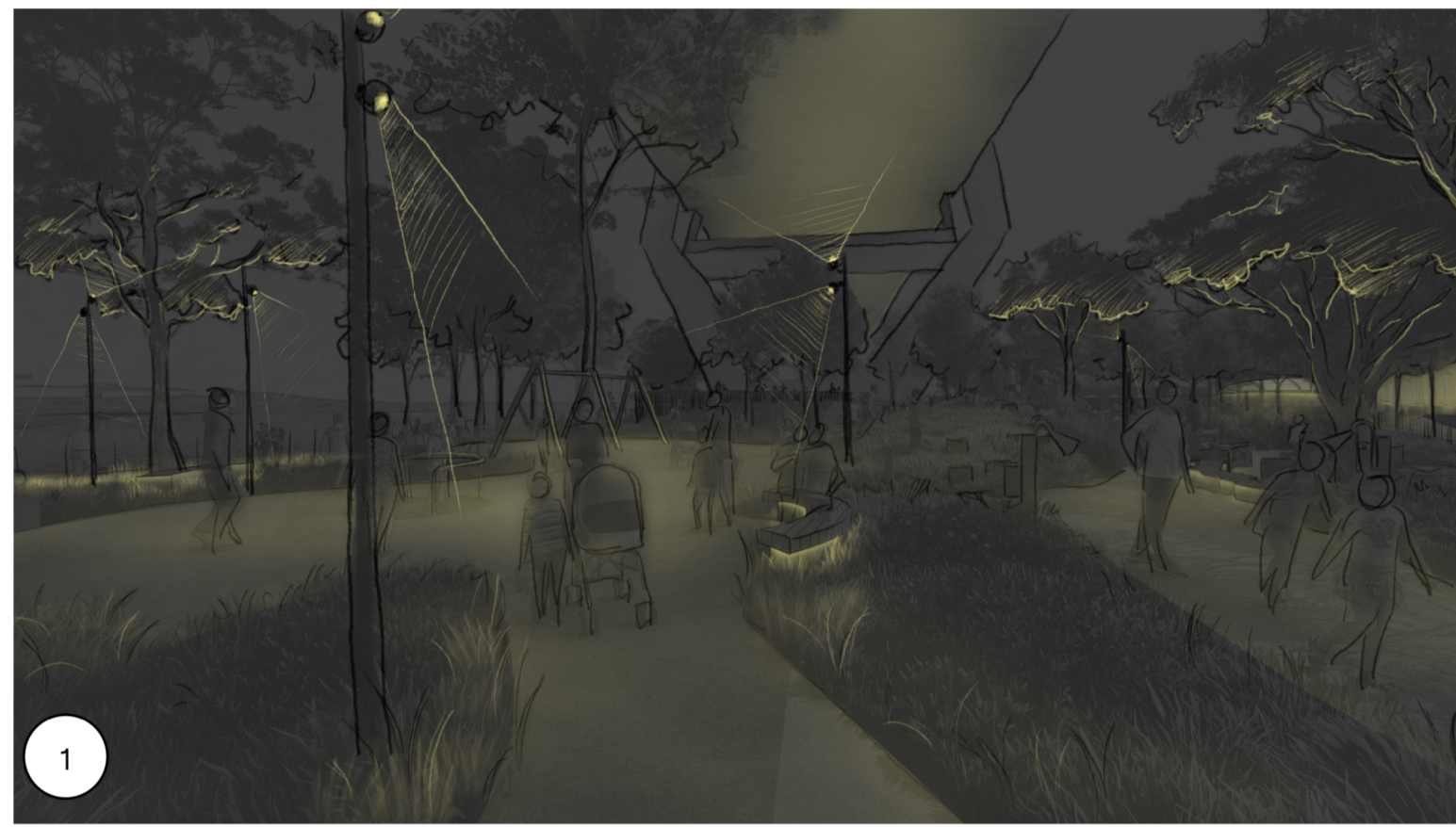
DRAWING TITLE  
**LIGHTING DESIGN**  
**LIGHTING STRATEGY - SHEET 01**

DATE	DRAWN	DESIGNED	CHECKED	APPROVED	SCALE
07/11/2025	AS	MR/AS	MR	MR	

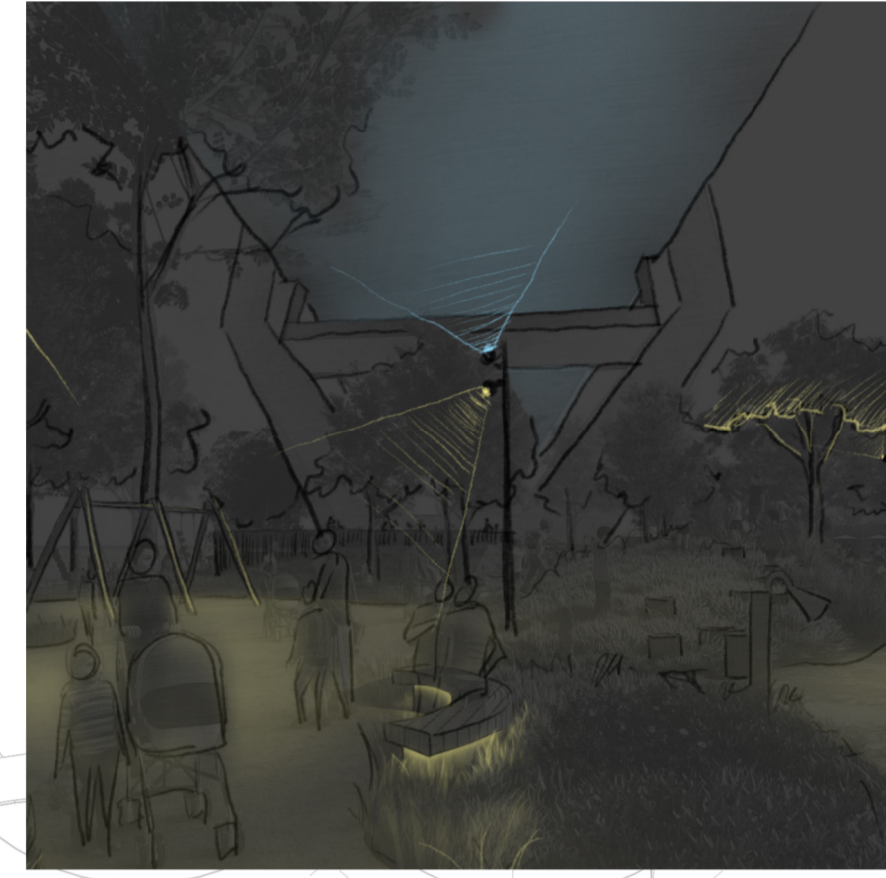
  

NORTHPOINT	PROJECT No.	DRAWING No.	REVISION
	247095	L-1301	D

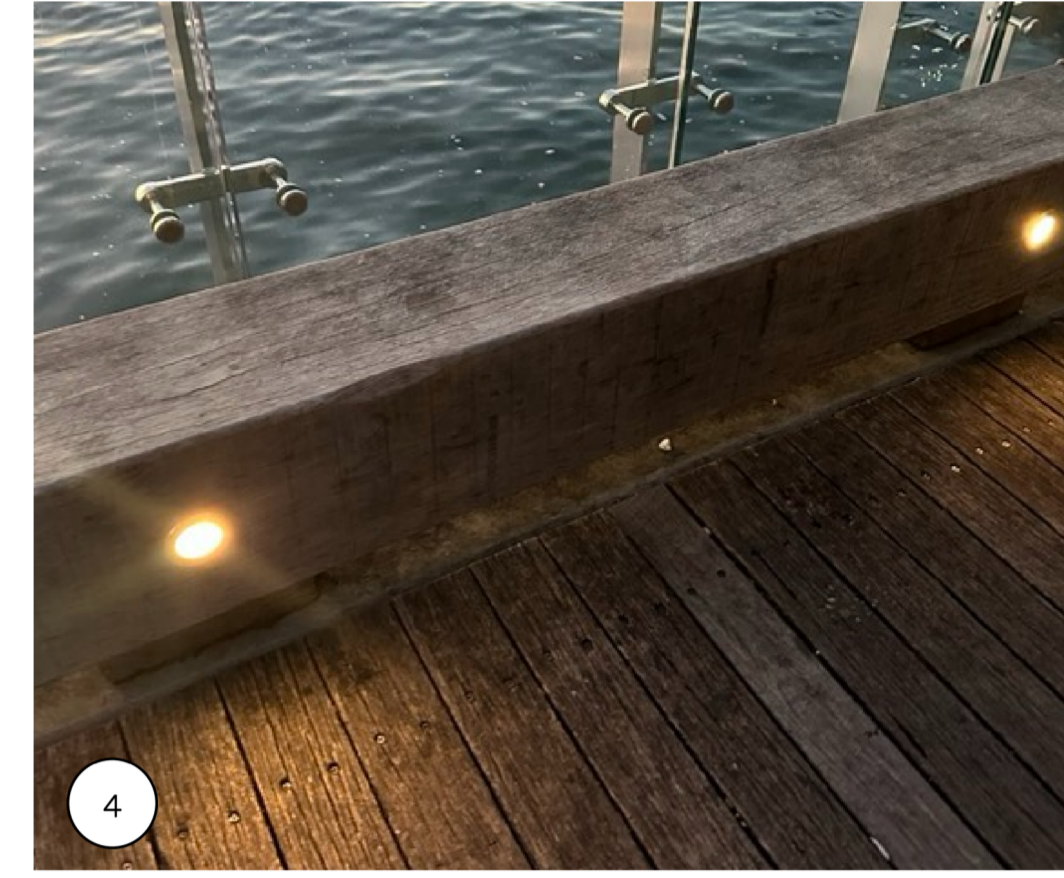
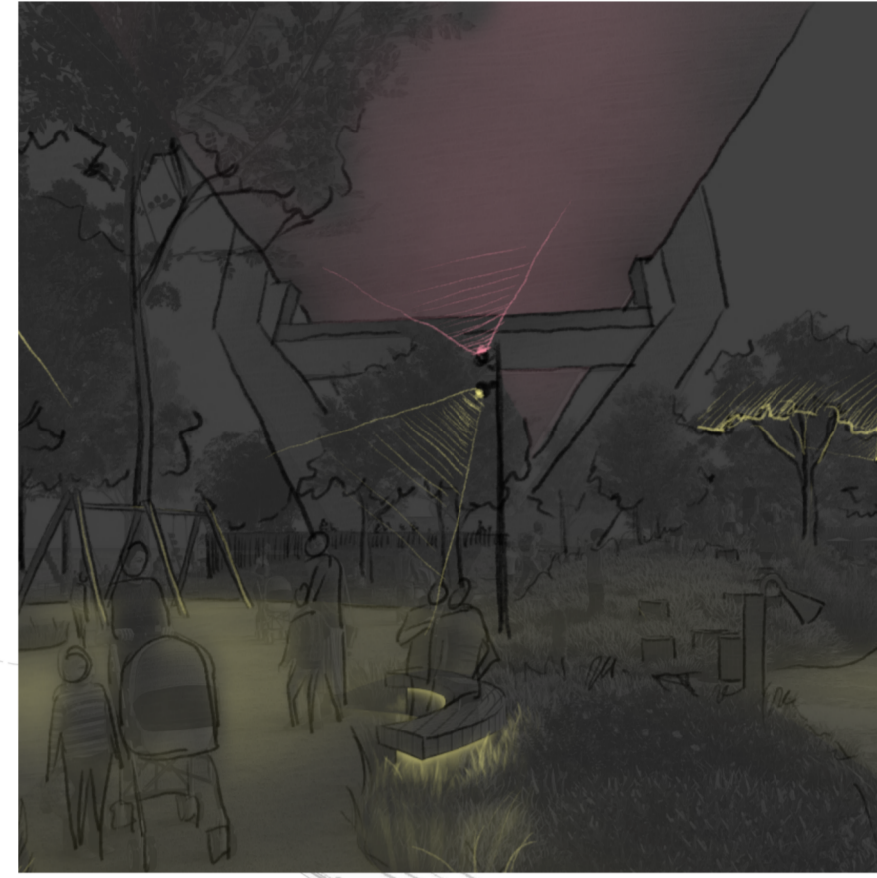
**TENDER**



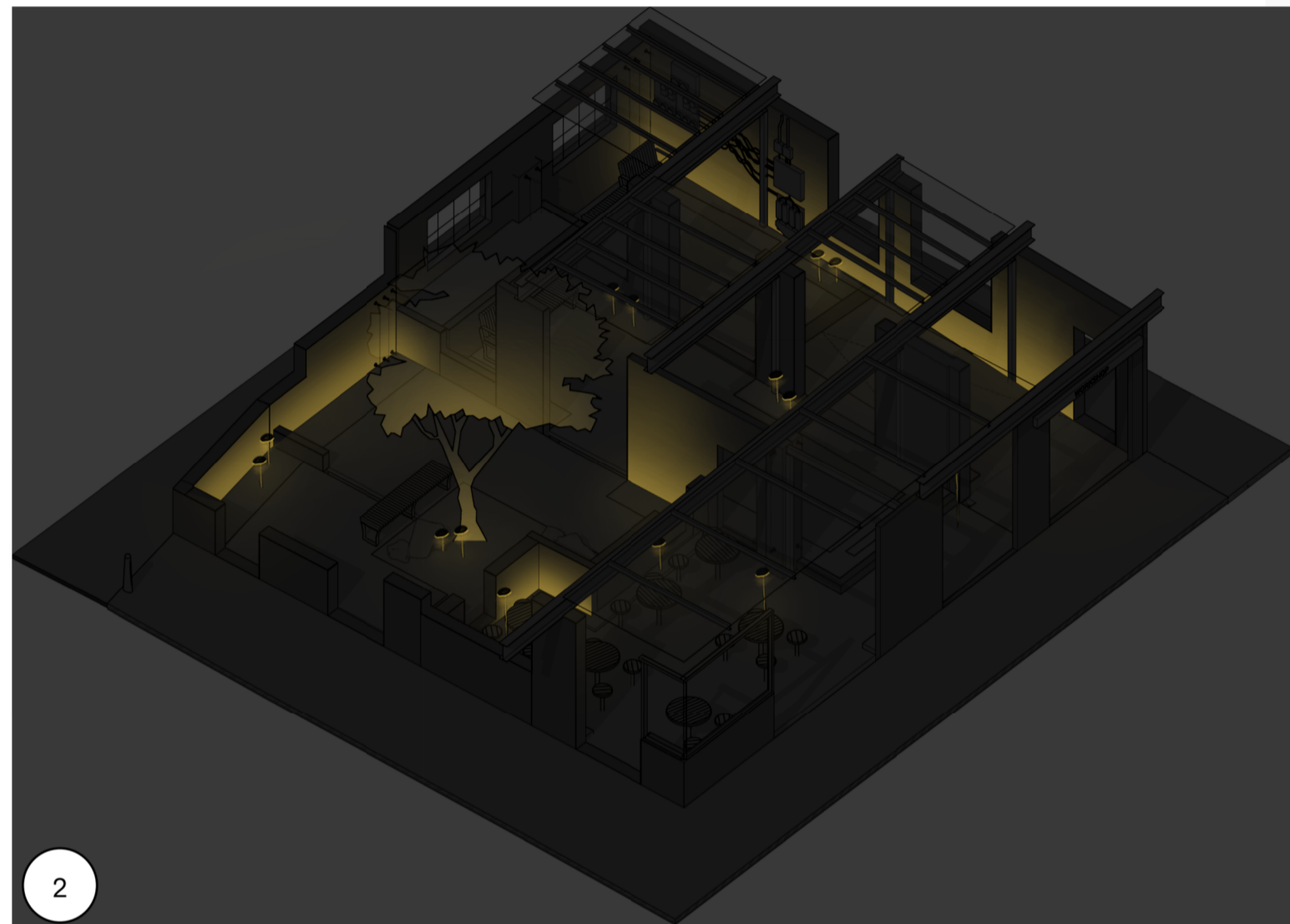
1  
GENERAL STRATEGY -  
MULTIFUNCTIONAL POLES FOR PATHWAY LIGHTING, TREE LIGHTING AND BRIDGE LIGHTING  
SUPPLEMENTED WITH LOW LEVEL FURNITURE AND LANDSCAPE LIGHTING



2  
BRIDGE LIGHTING -  
WARM WHITE UPLIGHTING TO BRIDGE, WITH OPTION TO USE COLOUR THROUGH FOR SPECIAL OCCASIONS  
AND EVENTS RGBW FIXTURES.



4  
INTEGRATED LOW LEVEL STEPLIGHTING TO SHORT WALLS OR  
BENCHES FOR FLOORWASHING ALONG WATERFRONT.



2  
INTERPRETIVE GARDEN LIGHTING - INTEGRATED LIGHTING WITH FOCUS ON BUILDING ELEMENTS

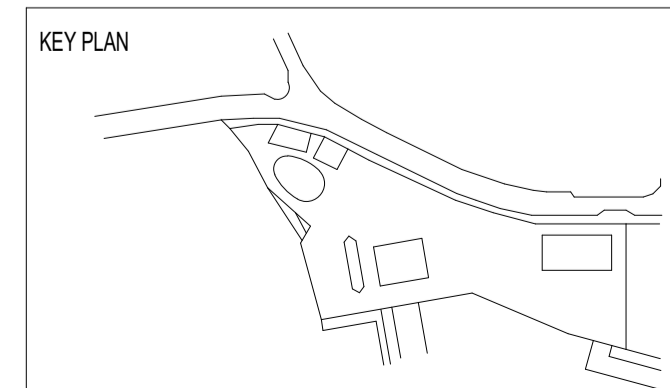


3  
INTEGRATED LOW LEVEL LIGHTING FOR CONCRETE BLEACHERS/ SEATING ELEMENT FOR  
WAYFINDING/ DIRECTION AND TO MARK KEY GATHERING AREAS



DESIGNED UNDER QUALITY SYSTEM CERTIFIED AS COMPLYING  
WITH ISO 9001 BY AN ACCREDITED CERTIFICATION BODY  
© Copyright. This Document and Design remains the copyright of Steensen Varming (Australia) Pty Ltd  
and cannot be reproduced in any way without prior consent. The contractor shall verify all dimensions and levels on site as this  
is not a workshop drawing. The contractor shall refer any discrepancies to the engineer before proceeding with the work. This  
drawing shall be read in conjunction with other contract documents, drawings and project specifications. This file has been  
checked by an antivirus program with the latest update. However new viruses are discovered everyday we recommend that this  
file is rescanned upon receipt.

AMENDMENTS		
REV	DESCRIPTION	DATE
A	TENDER ISSUE	27/02/2025
B	REVISED TENDER ISSUE	22/08/2025
C	REVISED TENDER ISSUE	04/09/2025
D	UPDATE FOR MODIFICATION	07/11/2025



Copenhagen  
London  
Sydney  
Canberra  
Hong Kong  
New York

Level 8, 9 Castlereagh St.  
Sydney, NSW, 2000, Australia  
ABN 50 001 189 037  
t : +61 / 02 9967 2200  
e : info@steensenvarming.com

**STEENSEN VARMING**

PROJECT  
**BANK STREET PARK  
BANK STREET, PYRMONT**

DRAWING TITLE  
**LIGHTING DESIGN  
LIGHTING STRATEGY - SHEET 02**

DATE	DRAWN	DESIGNED	CHECKED	APPROVED	SCALE
07/11/2025	AS	MR/AS	MR	MR	
NORTHPOINT	PROJECT No.	DRAWING No.	REVISION		
	247095	L-1302	D		

TENDER

A1  
Autodesk Docset/247095 - Bank Street Park - 247095-SV-XXXXXX-01-001.rvt

**GENERAL CONTROL STRATEGY:**

- ALL LIGHTING CONNECTED TO INTELLIGENT LIGHTING CONTROL SYSTEM NOMINATED BY ELECTRICAL ENGINEER OPERATED VIA PE CELL AND TIMER. PE CELL LOCATION ON THE BUILDING TO BE COORDINATED.
- LUMINAIRES TO BE INDIVIDUALLY CONTROLLABLE/ PROGRAMMABLE VIA DALI AND GROUPED INTO CONTROL GROUPS TO MATCH FUNCTIONALITY. (I.E. PATHWAY LIGHTING, LANDSCAPE LIGHTING, FURNITURE LIGHTING, .)
- ALLOW FOR PROGRAMMING OF VARIOUS LIGHTING CONTROL SCENES INCLUDING BUT NOT LIMITED TO NIGHT MODE, LATE NIGHT MODE, AND DAY MODE.
- FINAL SETTINGS TO BE SET DURING COMMISSIONING.
- ALL TRANSITIONS WITH A SMOOTH FADE RATE OVER 30 SECONDS.
- MANUAL ACTIVATION OF EVENT LIGHTING ELEMENTS INCLUDING COLOUR SELECTION.

**LIGHTING SCENES:**

- ALL SCENES TO BE ADJUSTED IN LINE WITH 365-DAY TIMECLOCK, ALLOWING FOR CHANGES IN DUSK/DAWN TIMES AND DAYLIGHT SAVINGS.
- NIGHT MODE: DUSK TO 11PM ACTIVATED VIA PE CELL. (ALIGNING WITH AS1158 CURFEW HOURS)
- LATE NIGHT MODE: CURFEW HOURS FROM 11PM TO DAWN (EARLIEST AT 6AM).
- DAY MODE: DAWN TO DUSK ACTIVATED VIA PE CELL.

**PATHWAY LIGHTING**

**NIGHT MODE**

- ALL TYPE PL POLE PATHWAY LIGHTING ON TO A PRE-SET LEVEL.
- ALL TYPE PU POLE UPLIGHT ON TO A PRE-SET LEVEL. COLOUR AND MOTION TO BE PROGRAMMED TO SUIT NEEDS.

**LATE NIGHT MODE**

- ALL TYPE PL POLE PATHWAY LIGHTING ON TO A PRE-SET DIM LEVEL VIA TIMER.
- ALL TYPE PU POLE UPLIGHT TO DIM TO OFF OVER A PERIOD OF 30 SECONDS VIA TIMER AND STAY OFF UNTIL NIGHT MODE IS ACTIVATED.

**DAY MODE**

- ALL TYPE PL POLE PATHWAY LIGHTING TO DIM TO OFF OVER A PERIOD OF 30 SECONDS AT DUSK AND STAY OFF UNTIL NIGHT MODE IS ACTIVATED.
- ALL TYPE PU POLE UPLIGHT STAYS OFF.

**INTERPRETIVE GARDEN**

NOTE: FINAL SETTINGS TO BE AGREED ON SITE IN LINE WITH CPTED REQUIREMENTS

**NIGHT MODE**

- ALL LIGHTING WITHIN INTERPRETIVE GARDEN, INCLUDING ALL MUSHROOM GARDEN LIGHTING TYPES M1, M2 AND M3, TYPES L3A AND L3B LINEAR LUMINAIRE, TYPE SP1 WINDOW FRAME LIGHTING, TYPE SP2 TREE LIGHTING ON TO PRE-SET LEVELS VIA TIMER.

**LATE NIGHT MODE**

- ALL TYPES L3A AND L3B LINEAR LUMINAIRE ON TO A PRE-SET DIM LEVEL VIA TIMER.
- ALL MUSHROOM GARDEN LIGHTING TYPES M1, M2 AND M3, TYPE SP1 WINDOW FRAME LIGHTING, TYPE SP2 TREE LIGHTING, TO DIM TO OFF OVER A PERIOD OF 30 SECONDS AT CURFEW TIME AND STAY OFF UNTIL NIGHT MODE IS ACTIVATED.

**DAY MODE**

- ALL TYPES L3A AND L3B LINEAR LUMINAIRE TO DIM TO OFF OVER A PERIOD OF 30 SECONDS AT DUSK AND STAY OFF UNTIL NIGHT MODE IS ACTIVATED.
- ALL MUSHROOM GARDEN LIGHTING TYPES M1, M2 AND M3, TYPE SP1 WINDOW FRAME LIGHTING, TYPE SP2 TREE LIGHTING STAYS OFF.

**LOW-LEVEL LANDSCAPE MARKER**

**NIGHT MODE**

- ALL TYPES L1A AND L1B LINEAR LUMINAIRES ON TO A PRE-SET LEVEL.
- ALL TYPE W1 WALL RECESSED DIRECTED FLOOR WASHER LUMINAIRES ON TO A PRE-SET LEVEL.

**LATE NIGHT MODE**

- ALL TYPES L1A, L1B AND W1 LIGHTING TO DIM TO OFF OVER A PERIOD OF 30 SECONDS AT CURFEW TIME AND STAY OFF UNTIL NIGHT MODE IS ACTIVATED.

**DAY MODE**

- ALL TYPES L1A, L1B AND W1 LIGHTING STAYS OFF.

**SPORTS LIGHTING**

**NIGHT MODE**

- ALL TYPE S1 POLE MOUNTED FLOODLIGHT ON TO A PRE-SET LEVEL.

**LATE NIGHT MODE**

- ALL TYPE S1 POLE MOUNTED FLOODLIGHT TO DIM TO OFF OVER A PERIOD OF 30 SECONDS AT CURFEW TIME AND STAY OFF UNTIL NIGHT MODE IS ACTIVATED.

**DAY MODE**

- ALL TYPE S1 POLE MOUNTED FLOODLIGHT STAYS OFF.

**STAIRCASE**

**NIGHT MODE**

- ALL TYPE H1 HANDRAIL LIGHTING ON TO A PRE-SET LEVEL.

**LATE NIGHT MODE**

- ALL TYPE H1 HANDRAIL LIGHTING ON TO A PRE-SET DIM LEVEL VIA TIMER.

**DAY MODE**

- ALL TYPE H1 HANDRAIL LIGHTING TO DIM TO OFF OVER A PERIOD OF 30 SECONDS AT DUSK AND STAY OFF UNTIL NIGHT MODE IS ACTIVATED.

**SHELTER**

**NIGHT MODE**

- ALL TYPES L2 LINEAR LUMINAIRES ON TO A PRE-SET LEVEL.

**LATE NIGHT MODE**

- ALL TYPES L2 LINEAR LUMINAIRES TO DIM TO OFF OVER A PERIOD OF 30 SECONDS AT CURFEW TIME AND STAY OFF UNTIL NIGHT MODE IS ACTIVATED.

**DAY MODE**

- ALL TYPES L2 LINEAR LUMINAIRES STAYS OFF.

**AMENITIES**

- TYPE D2 DOWNLIGHT TO BE CONTROLLED VIA SWITCH WITHIN THE OFFICE (AT ALL TIMES).

**NIGHT MODE**

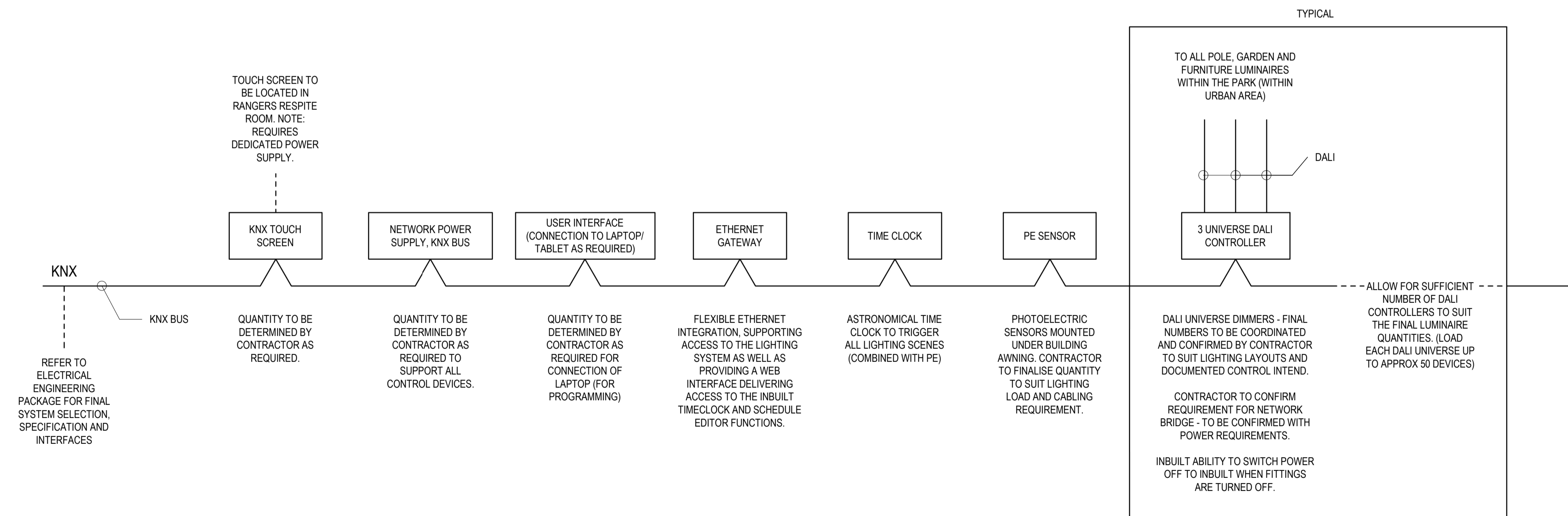
- ALL LUMINAIRES WITHIN CUBICLES/ ROOMS, OTHER THAN TYPE D2 DOWNLIGHT (OFFICE), TURNED ON VIA MOTION SENSOR TO PRESET LEVEL. CUBICLE LIGHTS TO BE CONNECTED TO MOTION SENSOR AT BASIN AREA, SHOWER ROOMS WITH INDIVIDUAL SENSOR.
- UPLIGHT AND BASIN LIGHT (TYPE D1) ON/ SET TO PRE-SET LEVEL FROM DUSK.

**LATE NIGHT MODE**

- UPLIGHTING TO TURN TO LOW LEVEL AND STAY ON TILL DAYMODE IS ACTIVATED.
- ALL OTHER LUMINAIRES, OTHER THAN TYPE D2 DOWNLIGHT, TO DIM TO OFF OVER A PERIOD OF 30 SECONDS AT CURFEW TIME AND STAY OFF UNTIL NIGHT MODE IS ACTIVATED VIA SENSOR.

**DAY MODE**

- ALL LUMINAIRES OTHER THAN TYPE D2 DOWNLIGHT STAYS OFF.



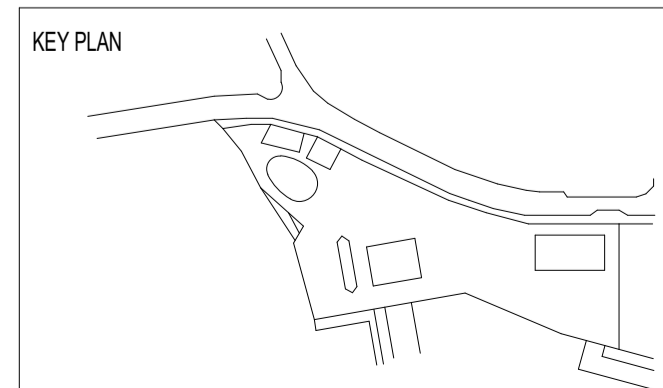
**INDICATIVE SINGLE LINE DIAGRAM**

NOTE: FOR DETAILS AND SPECIFICATIONS REFER TO ELECTRICAL DOCUMENTATIONS

DESIGNED UNDER QUALITY SYSTEM CERTIFIED AS COMPLYING WITH ISO 9001 BY AN ACCREDITED CERTIFICATION BODY

© Copyright. This Document and Design remains the copyright of Steensen Varming (Australia) Pty Ltd and cannot be reproduced in any way without prior consent. The contractor shall verify all dimensions and levels on site as this is not a workshop drawing. The contractor shall refer any discrepancies to the engineer before proceeding with the work. This drawing shall be read in conjunction with other contract documents, drawings and project specifications. This file has been checked by an antivirus program with the latest update. However new viruses are discovered everyday we recommend that this file is rescanned upon receipt.

AMENDMENTS		
REV	DESCRIPTION	DATE
A	TENDER ISSUE	27/02/2025
B	REVISED TENDER ISSUE	22/08/2025
C	REVISED TENDER ISSUE	04/09/2025
D	UPDATE FOR MODIFICATION	07/11/2025



Copenhagen  
London  
Sydney  
Canberra  
Hong Kong  
New York

Level 8, 9 Castlereagh St.  
Sydney, NSW, 2000, Australia  
ABN 50 001 189 037  
t : +61 / 02 9967 2200  
e : info@steensenvarming.com

**STEENSEN VARMING**

PROJECT  
**BANK STREET PARK  
BANK STREET, PYRMONT**

DRAWING TITLE  
**LIGHTING DESIGN  
LIGHTING CONTROL**

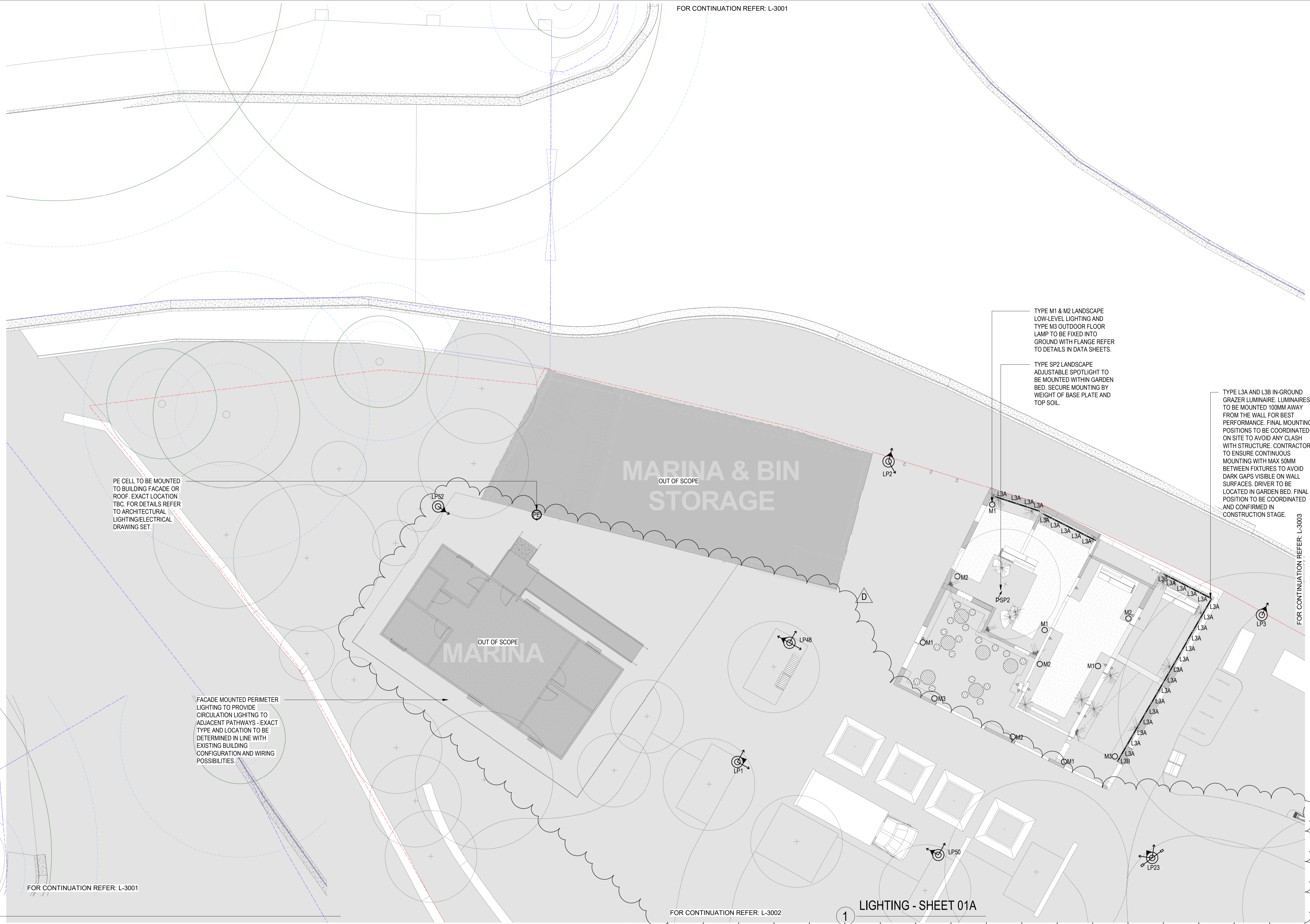
DATE	DRAWN	DESIGNED	CHECKED	APPROVED	SCALE
07/11/2025	AS	MR/AS	MR	MR	
NORTHPOINT	PROJECT No.	DRAWING No.	REVISION		
	247095	L-1303	D		

**TENDER**

**A1**

Autodesk Docs/247095 - Bank Street Park (247095-SVXXXXX)A1-L-0001.rvt





PE CELL TO BE MOUNTED TO BUILDING FACADE OR ROOF. EXACT LOCATION TBC. FOR DETAILS REFER TO ARCHITECTURAL LIGHTING/ELECTRICAL DRAWING SET.

FACADE MOUNTED PERIMETER LIGHTING TO PROVIDE CIRCULATION LIGHTING TO ADJACENT PATHWAYS - EXACT TYPE AND LOCATION TO BE DETERMINED IN LINE WITH EXISTING BUILDING CONFIGURATION AND WIRING POSSIBILITIES.

TYPE M1 & M2 LANDSCAPE LOW-LEVEL LIGHTING AND TYPE M3 OUTDOOR FLOOR LAMP TO BE FIXED INTO GROUND WITH FLANGE REFER TO DETAILS IN DATA SHEETS.

TYPE SP2 LANDSCAPE ADJUSTABLE SPOTLIGHT TO BE MOUNTED WITHIN GARDEN BED. SECURE MOUNTING BY WEIGHT OF BASE PLATE AND TOP SOIL.

TYPE L3A AND L3B IN-GROUND GRAZER LUMINAIRE. LUMINAIRES TO BE MOUNTED 100MM AWAY FROM THE WALL FOR BEST PERFORMANCE. FINAL MOUNTING POSITIONS TO BE COORDINATED ON SITE TO AVOID ANY CLASH WITH STRUCTURE. CONTRACTOR TO ENSURE CONTINUOUS MOUNTING WITH MAX 50MM BETWEEN FIXTURES TO AVOID DARK GAPS VISIBLE ON WALL SURFACES. DRIVER TO BE LOCATED IN GARDEN BED. FINAL POSITION TO BE COORDINATED AND CONFIRMED IN CONSTRUCTION STAGE.

LIGHTING - SHEET 01B

LIGHTING - SHEET 01A

FOR CONTINUATION REFER: L-3001

FOR CONTINUATION REFER: L-3002

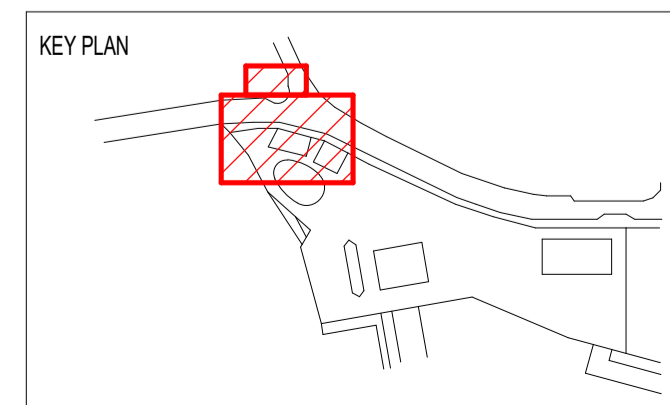
FOR CONTINUATION REFER: L-3003

DESIGNED UNDER QUALITY SYSTEM CERTIFIED AS COMPLYING WITH ISO 9001 BY AN ACCREDITED CERTIFICATION BODY

© Copyright. This Document and Design remains the copyright of Steensen Varming (Australia) Pty Ltd and cannot be reproduced in any way without prior consent. The contractor shall verify all dimensions and levels on site as this is not a workshop drawing. The contractor shall refer any discrepancies to the engineer before proceeding with the work. This drawing shall be read in conjunction with other contract documents, drawings and project specifications. This file has been checked by an antivirus program with the latest update. However new viruses are discovered everyday we recommend that this file is rescanned upon receipt.

**TENDER**

REV	DESCRIPTION	DATE
A	TENDER ISSUE	27/02/2025
B	REVISED TENDER ISSUE	22/08/2025
C	REVISED TENDER ISSUE	04/09/2025
D	UPDATE FOR MODIFICATION	07/11/2025



Copenhagen  
London  
Sydney  
Canberra  
Hong Kong  
New York

Level 8, 9 Castlereagh St.  
Sydney, NSW, 2000, Australia  
ABN 50 001 189 037  
t : +61 / 02 9967 2200  
e : info@steensenvarming.com

**STEENSEN VARMING**

PROJECT  
**BANK STREET PARK  
BANK STREET, PYRMONT**

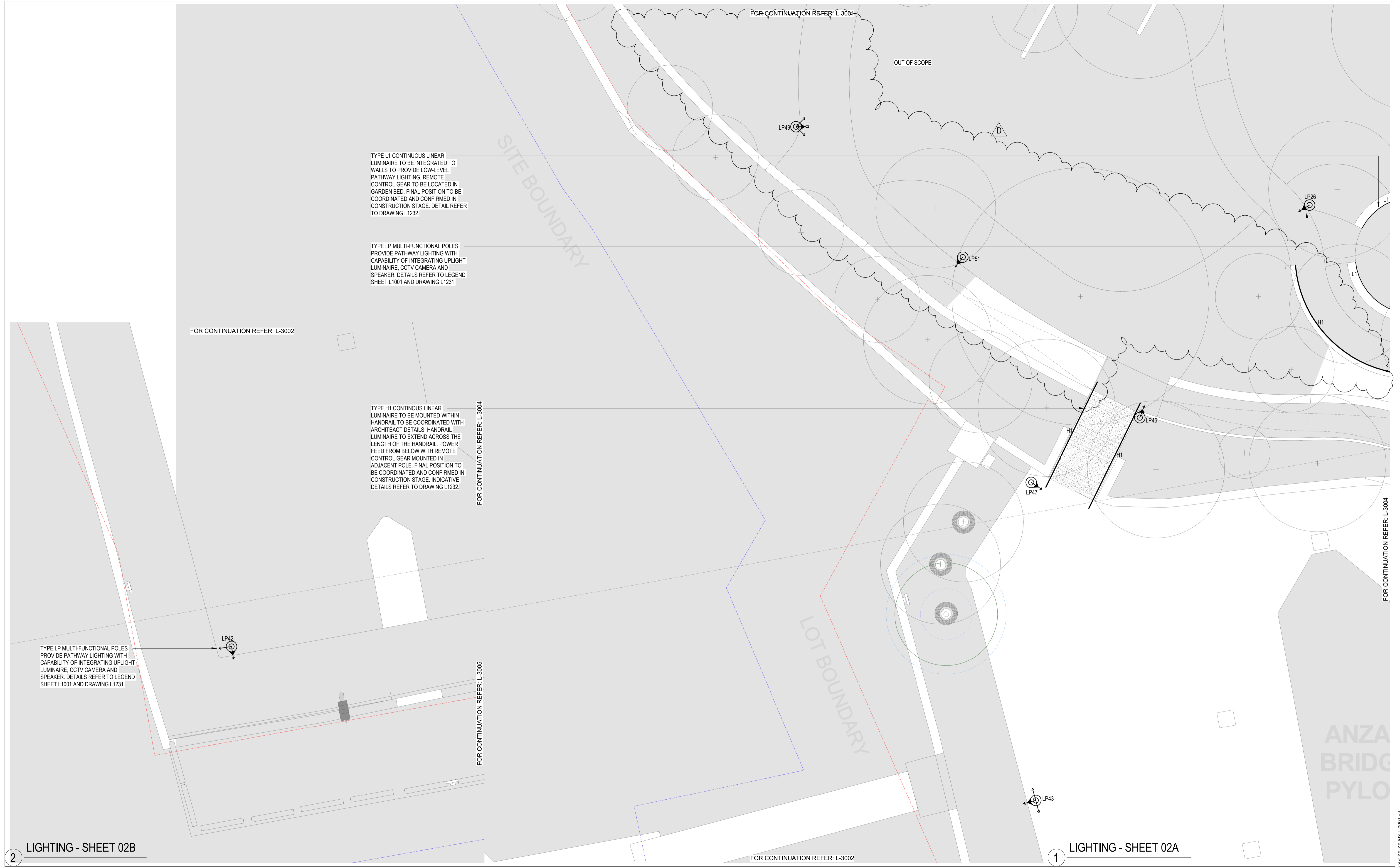
DRAWING TITLE  
**LIGHTING DESIGN  
LIGHTING LAYOUT - SHEET 01**

DATE	DRAWN	DESIGNED	CHECKED	APPROVED	SCALE
07/11/2025	AS	MR/AS	MR	MR	1 : 100

NORTHPOINT	PROJECT No.	DRAWING No.	REVISION
	247095	L-3001	D

A1



TYPE L1 CONTINUOUS LINEAR LUMINAIRE TO BE INTEGRATED TO WALLS TO PROVIDE LOW-LEVEL PATHWAY LIGHTING. REMOTE CONTROL GEAR TO BE LOCATED IN GARDEN BED. FINAL POSITION TO BE COORDINATED AND CONFIRMED IN CONSTRUCTION STAGE. DETAIL REFER TO DRAWING L1232.

TYPE LP MULTI-FUNCTIONAL POLES PROVIDE PATHWAY LIGHTING WITH CAPABILITY OF INTEGRATING UPLIGHT LUMINAIRE, CCTV CAMERA AND SPEAKER. DETAILS REFER TO LEGEND SHEET L1001 AND DRAWING L1231.

TYPE H1 CONTINUOUS LINEAR LUMINAIRE TO BE MOUNTED WITHIN HANDRAIL TO BE COORDINATED WITH ARCHITECT DETAILS. HANDRAIL LUMINAIRE TO EXTEND ACROSS THE LENGTH OF THE HANDRAIL. POWER FEED FROM BELOW WITH REMOTE CONTROL GEAR MOUNTED IN ADJACENT POLE. FINAL POSITION TO BE COORDINATED AND CONFIRMED IN CONSTRUCTION STAGE. INDICATIVE DETAILS REFER TO DRAWING L1232.

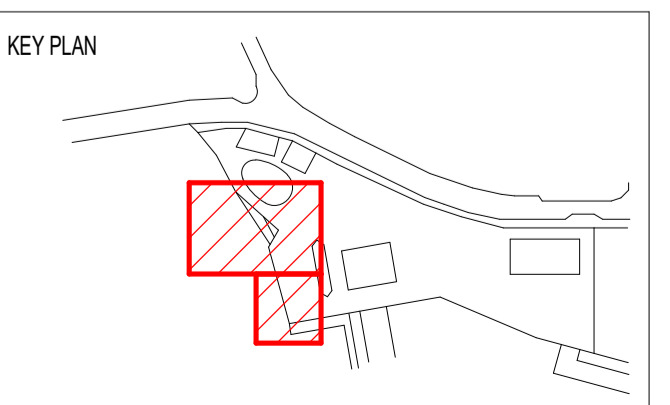
TYPE LP MULTI-FUNCTIONAL POLES PROVIDE PATHWAY LIGHTING WITH CAPABILITY OF INTEGRATING UPLIGHT LUMINAIRE, CCTV CAMERA AND SPEAKER. DETAILS REFER TO LEGEND SHEET L1001 AND DRAWING L1231.

2 LIGHTING - SHEET 02B

1 LIGHTING - SHEET 02A

DESIGNED UNDER QUALITY SYSTEM CERTIFIED AS COMPLYING WITH ISO 9001 BY AN ACCREDITED CERTIFICATION BODY  
 © Copyright. This Document and Design remains the copyright of Steensen Varming (Australia) Pty Ltd and cannot be reproduced in any way without prior consent. The contractor shall verify all dimensions and levels on site as this is not a workshop drawing. The contractor shall refer any discrepancies to the engineer before proceeding with the work. This drawing shall be read in conjunction with other contract documents, drawings and project specifications. This file has been checked by an antivirus program with the latest update. However new viruses are discovered everyday we recommend that this file is rescanned upon receipt.

AMENDMENTS		
REV	DESCRIPTION	DATE
A	TENDER ISSUE	27/02/2025
B	REVISED TENDER ISSUE	22/08/2025
C	REVISED TENDER ISSUE	04/09/2025
D	UPDATE FOR MODIFICATION	07/11/2025



Copenhagen  
 London  
 Sydney  
 Canberra  
 Hong Kong  
 New York

Level 8, 9 Castlereagh St.  
 Sydney, NSW, 2000, Australia  
 ABN 50 001 189 037  
 t : +61 / 02 9967 2200  
 e : info@steensenvarming.com

**STEENSEN VARMING**

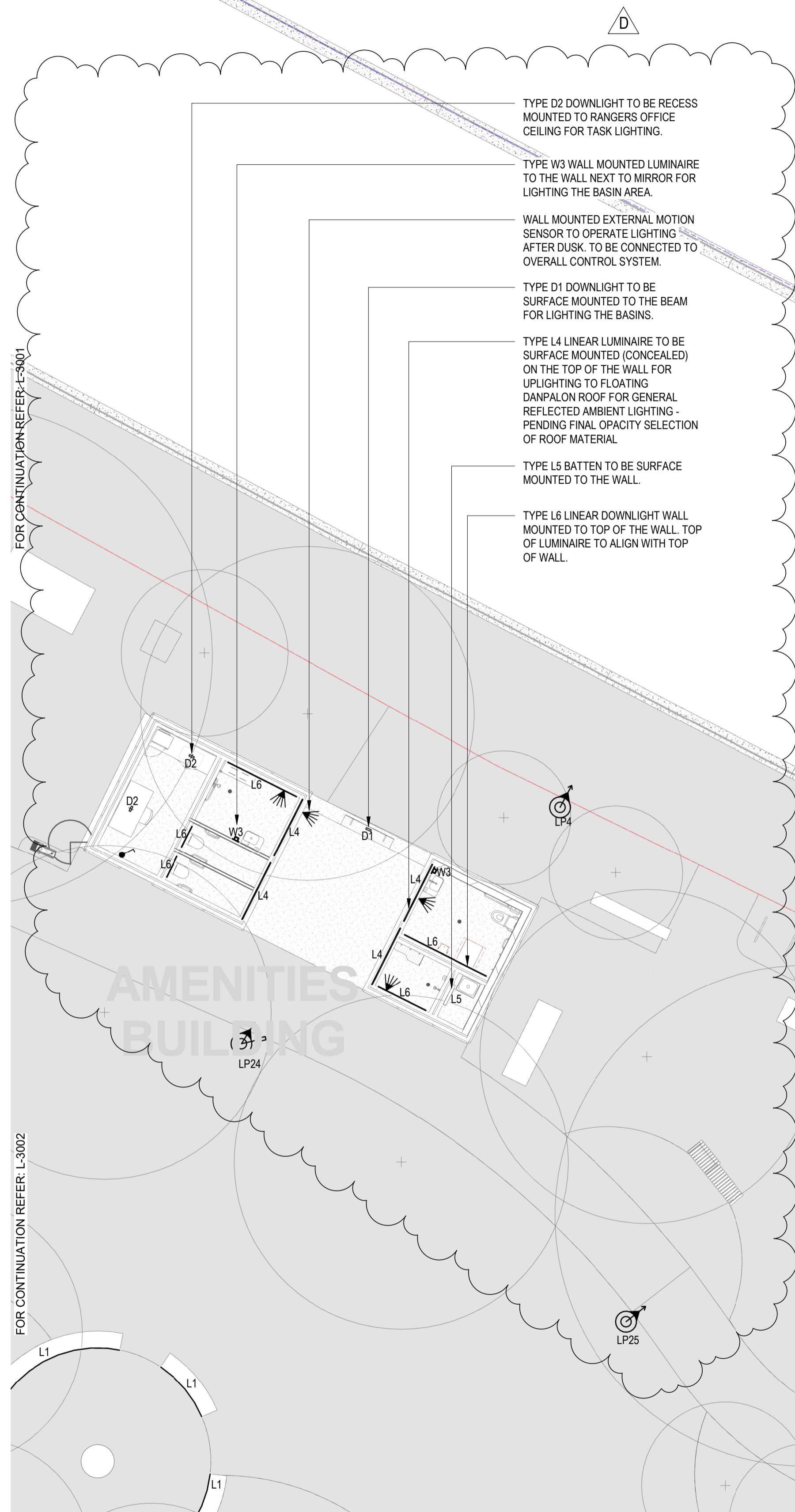
PROJECT  
**BANK STREET PARK  
 BANK STREET, PYRMONT**

DRAWING TITLE  
**LIGHTING DESIGN  
 LIGHTING LAYOUT - SHEET 02**

0 5m 10m					<b>A1</b>
DATE	DRAWN	DESIGNED	CHECKED	APPROVED	SCALE
07/11/2025	AS	MR/AS	MR	MR	1 : 100
NORTHPOINT	PROJECT No.	DRAWING No.	REVISION		
	247095	L-3002	<b>D</b>		

TENDER

Autodesk Docs/247095 - Bank Street Park (247095-SV-XXX-XX-104-L001.rvt)



TYPE D2 DOWNLIGHT TO BE RECESS MOUNTED TO RANGERS OFFICE CEILING FOR TASK LIGHTING.

TYPE W3 WALL MOUNTED LUMINAIRE TO THE WALL NEXT TO MIRROR FOR LIGHTING THE BASIN AREA.

WALL MOUNTED EXTERNAL MOTION SENSOR TO OPERATE LIGHTING AFTER DUSK. TO BE CONNECTED TO OVERALL CONTROL SYSTEM.

TYPE D1 DOWNLIGHT TO BE SURFACE MOUNTED TO THE BEAM FOR LIGHTING THE BASINS.

TYPE L4 LINEAR LUMINAIRE TO BE SURFACE MOUNTED (CONCEALED) ON THE TOP OF THE WALL FOR UPLIGHTING TO FLOATING DANPALON ROOF FOR GENERAL REFLECTED AMBIENT LIGHTING - PENDING FINAL OPACITY SELECTION OF ROOF MATERIAL

TYPE L5 BATTEN TO BE SURFACE MOUNTED TO THE WALL

TYPE L6 LINEAR DOWNLIGHT WALL MOUNTED TO TOP OF THE WALL. TOP OF LUMINAIRE TO ALIGN WITH TOP OF WALL.

TYPE L2 LINEAR LUMINAIRE TO BE INTEGRATED INTO SHELTER STRUCTURE AND TO BE CONCEALED FROM VIEW WITHIN PRE-CUT CHANNEL. FINAL LENGTHS AND SET-OUT TO ALIGN WITH FINAL SHELTER DESIGN. REMOTE CONTROL GEAR TO BE MOUNTED WITHIN ADJACENT POLE AND FINAL LOCATIONS TO BE COORDINATED AND CONFIRMED IN CONSTRUCTION STAGE. DETAILS REFER TO DRAWING L1232.

TYPE LP MULTI-FUNCTIONAL POLES PROVIDE PATHWAY LIGHTING WITH CAPABILITY OF INTEGRATING UPLIGHT LUMINAIRE, CCTV CAMERA AND SPEAKER. DETAILS REFER TO LEGEND SHEET L1001 AND DRAWING L1231.

FOR CONTINUATION REFER: L-3001

FOR CONTINUATION REFER: L-3002

FOR CONTINUATION REFER: L-3006

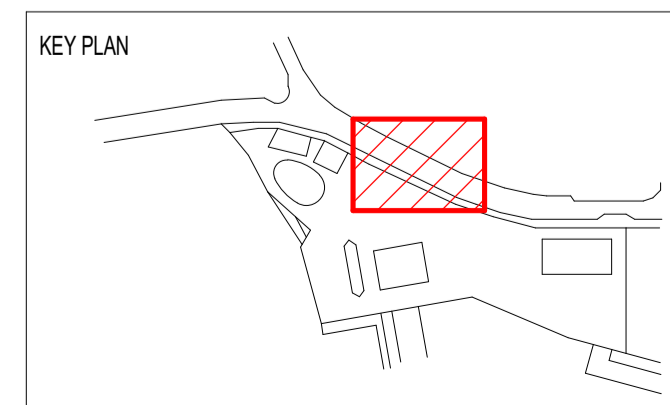
FOR CONTINUATION REFER: L-3004

AMENITIES BUILDING

BANK STREET

DESIGNED UNDER QUALITY SYSTEM CERTIFIED AS COMPLYING WITH ISO 9001 BY AN ACCREDITED CERTIFICATION BODY  
 © Copyright. This Document and Design remains the copyright of Steensen Varming (Australia) Pty Ltd and cannot be reproduced in any way without prior consent. The contractor shall verify all dimensions and levels on site as this is not a workshop drawing. The contractor shall refer any discrepancies to the engineer before proceeding with the work. This drawing shall be read in conjunction with other contract documents, drawings and project specifications. This file has been checked by an antivirus program with the latest update. However new viruses are discovered everyday we recommend that this file is rescanned upon receipt.

AMENDMENTS		
REV	DESCRIPTION	DATE
A	TENDER ISSUE	27/02/2025
B	REVISED TENDER ISSUE	22/08/2025
C	REVISED TENDER ISSUE	04/09/2025
D	UPDATE FOR MODIFICATION	07/11/2025



Copenhagen  
 London  
 Sydney  
 Canberra  
 Hong Kong  
 New York

Level 8, 9 Castlereagh St.  
 Sydney, NSW, 2000, Australia  
 ABN 50 001 189 037  
 t : +61 / 02 9967 2200  
 e : info@steensenvarming.com

**STEENSEN VARMING**

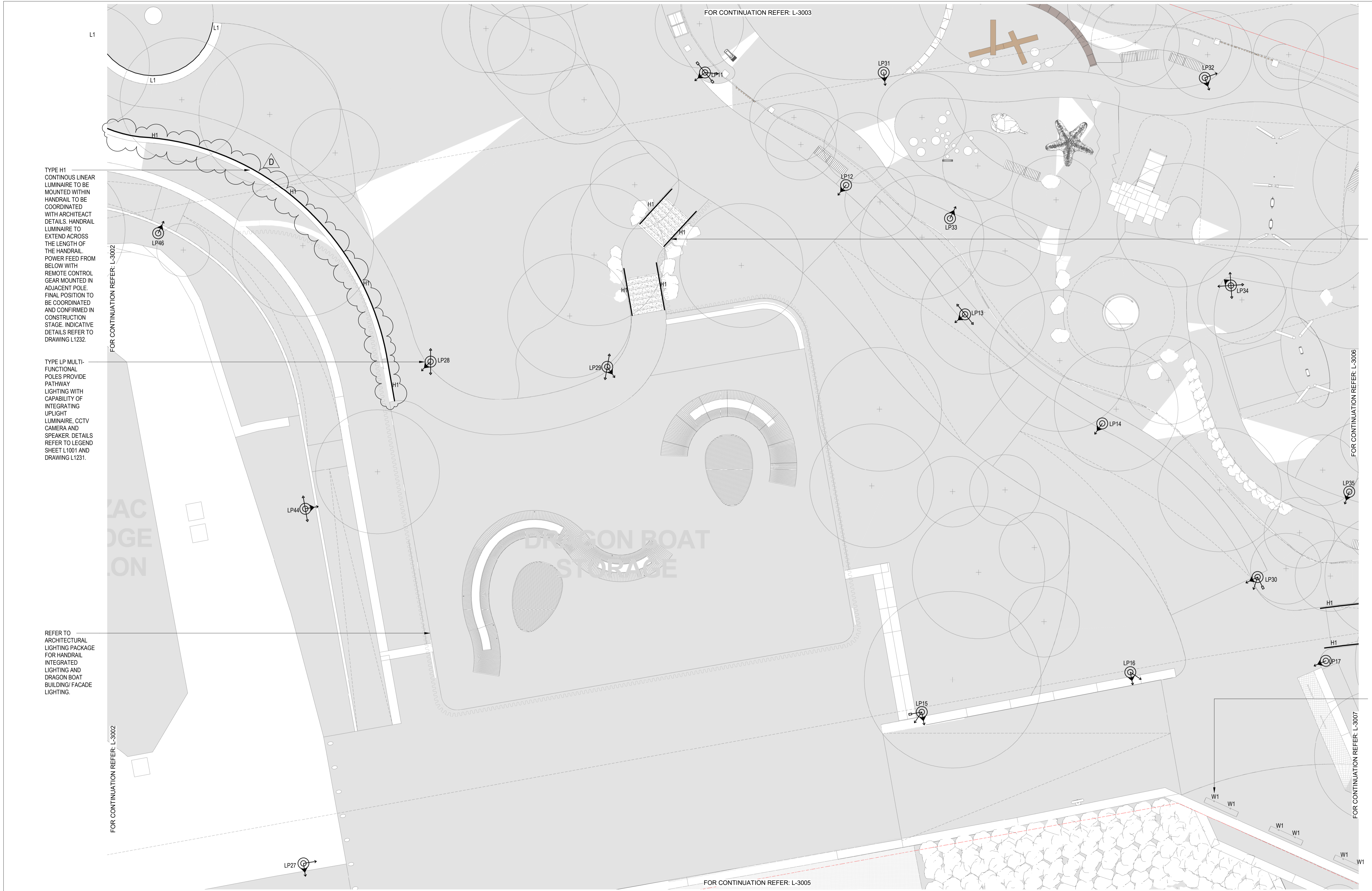
PROJECT  
**BANK STREET PARK**  
**BANK STREET, PYRMONT**

DRAWING TITLE  
**LIGHTING DESIGN**  
**LIGHTING LAYOUT - SHEET 03**

0 5m 10m					<b>A1</b>
DATE	DRAWN	DESIGNED	CHECKED	APPROVED	SCALE
07/11/2025	AS	MR/AS	MR	MR	1 : 100
NORTHPOINT	PROJECT No.	DRAWING No.	REVISION		
	247095	L-3003	<b>D</b>		

**TENDER**

Autodesk Docset/247095 - Bank Street Park (247095-SVXXXXXX)A1-L-001.rvt



TYPE H1 CONTINUOUS LINEAR LUMINAIRE TO BE MOUNTED WITHIN HANDRAIL TO BE COORDINATED WITH ARCHITECT DETAILS. HANDRAIL LUMINAIRE TO EXTEND ACROSS THE LENGTH OF THE HANDRAIL. POWER FEED FROM BELOW WITH REMOTE CONTROL GEAR MOUNTED IN ADJACENT POLE. FINAL POSITION TO BE COORDINATED AND CONFIRMED IN CONSTRUCTION STAGE. INDICATIVE DETAILS REFER TO DRAWING L1232.

TYPE LP MULTI-FUNCTIONAL POLES PROVIDE PATHWAY LIGHTING WITH CAPABILITY OF INTEGRATING UPLIGHT LUMINAIRE, CCTV CAMERA AND SPEAKER. DETAILS REFER TO LEGEND SHEET L1001 AND DRAWING L1231.

REFER TO ARCHITECTURAL LIGHTING PACKAGE FOR HANDRAIL INTEGRATED LIGHTING AND DRAGON BOAT BUILDING/ FACADE LIGHTING.

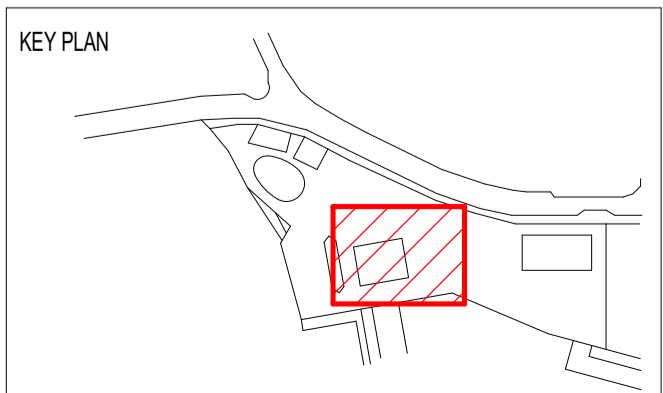
TYPE H1 CONTINUOUS LINEAR LUMINAIRE TO BE MOUNTED WITHIN HANDRAIL TO BE COORDINATED WITH ARCHITECT DETAILS. HANDRAIL LUMINAIRE TO EXTEND ACROSS THE LENGTH OF THE HANDRAIL. POWER FEED FROM BELOW WITH REMOTE CONTROL GEAR MOUNTED IN ADJACENT POLE. FINAL POSITION TO BE COORDINATED AND CONFIRMED IN CONSTRUCTION STAGE. INDICATIVE DETAILS REFER TO DRAWING L1232.

RECESSED FLOORWASH SPOTLIGHTING TYPE W1 TO BE INTEGRATED TO TIMBER BLOCK ALONG WATEREDGE TO MATCH FISH MARKET LIGHTING DESIGN. REMOTE CONTROL GEAR TO BE LOCATED WITHIN SLEEPER. FINAL POSITION TO BE COORDINATED AND CONFIRMED IN CONSTRUCTION STAGE. FOR DETAILS REFER TO DRAWING L-1232.

DESIGNED UNDER QUALITY SYSTEM CERTIFIED AS COMPLYING WITH ISO 9001 BY AN ACCREDITED CERTIFICATION BODY  
 © Copyright. This Document and Design remains the copyright of Steensen Varming (Australia) Pty Ltd and cannot be reproduced in any way without prior consent. The contractor shall verify all dimensions and levels on site as this is not a workshop drawing. The contractor shall refer any discrepancies to the engineer before proceeding with the work. This drawing shall be read in conjunction with other contract documents, drawings and project specifications. This file has been checked by an antivirus program with the latest update. However new viruses are discovered everyday we recommend that this file is rescan upon receipt.

TENDER

AMENDMENTS		
REV	DESCRIPTION	DATE
A	TENDER ISSUE	27/02/2025
B	REVISED TENDER ISSUE	22/08/2025
C	REVISED TENDER ISSUE	04/09/2025
D	UPDATE FOR MODIFICATION	07/11/2025



Copenhagen  
 London  
 Sydney  
 Canberra  
 Hong Kong  
 New York

Level 8, 9 Castlereagh St.  
 Sydney, NSW, 2000, Australia  
 ABN 50 001 189 037  
 t : +61 / 02 9967 2200  
 e : info@steensenvarming.com

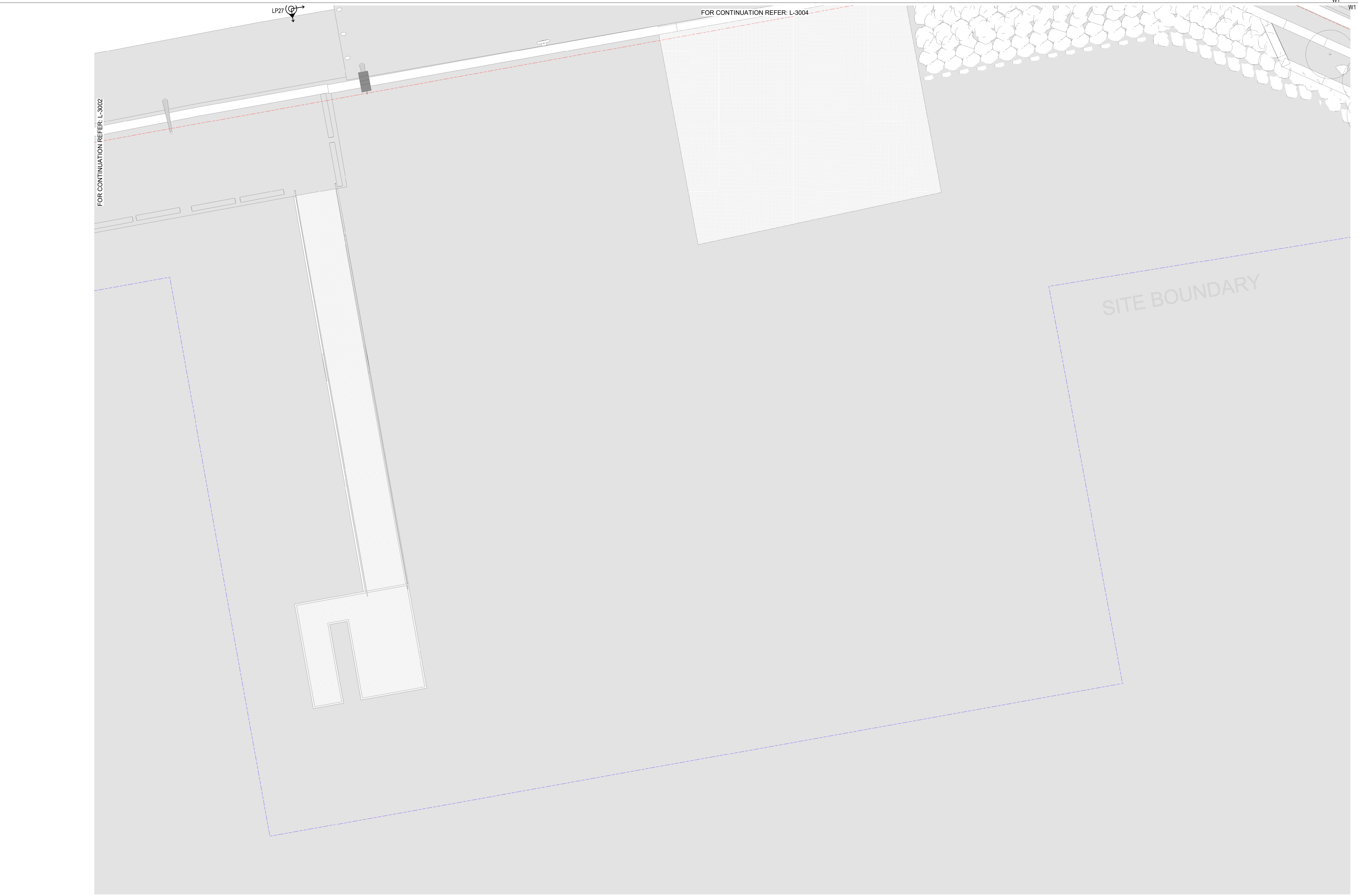
**STEENSEN VARMING**

PROJECT  
**BANK STREET PARK**  
**BANK STREET, PYRMONT**

DRAWING TITLE  
**LIGHTING DESIGN**  
**LIGHTING LAYOUT - SHEET 04**

0 5m 10m					<b>A1</b>
DATE	DRAWN	DESIGNED	CHECKED	APPROVED	SCALE
07/11/2025	AS	MR/AS	MR	MR	1 : 100
NORTHPOINT	PROJECT No.	DRAWING No.	REVISION		
	247095	L-3004	D		

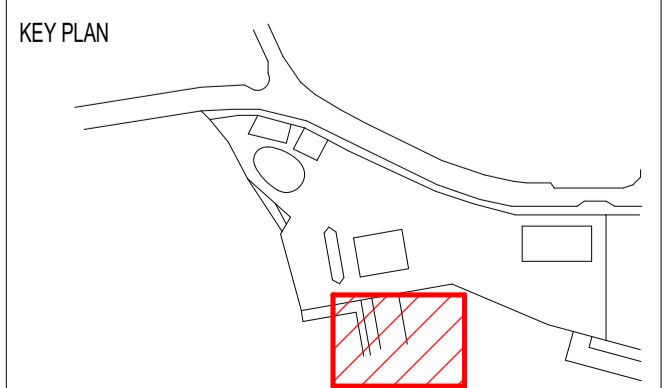
Autodesk.Dwg27/07/2025 - Bank Street Park (247095-SVXXXXXX)A1-L-001.rvt



DESIGNED UNDER QUALITY SYSTEM CERTIFIED AS COMPLYING WITH ISO 9001 BY AN ACCREDITED CERTIFICATION BODY

© Copyright. This Document and Design remains the copyright of Steensen Varming (Australia) Pty Ltd and cannot be reproduced in any way without prior consent. The contractor shall verify all dimensions and levels on site as this is not a workshop drawing. The contractor shall refer any discrepancies to the engineer before proceeding with the work. This drawing shall be read in conjunction with other contract documents, drawings and project specifications. This file has been checked by an antivirus program with the latest update. However new viruses are discovered everyday we recommend that this file is rescanned upon receipt.

AMENDMENTS		
REV	DESCRIPTION	DATE
A	TENDER ISSUE	27/02/2025
B	REVISED TENDER ISSUE	22/08/2025
C	REVISED TENDER ISSUE	04/09/2025
D	UPDATE FOR MODIFICATION	07/11/2025



Copenhagen  
London  
Sydney  
Canberra  
Hong Kong  
New York

Level 8, 9 Castlereagh St.  
Sydney, NSW, 2000, Australia  
ABN 50 001 189 037  
t : +61 / 02 9967 2200  
e : info@steensenvarming.com

**STEENSEN VARMING**

PROJECT  
**BANK STREET PARK  
BANK STREET, PYRMONT**

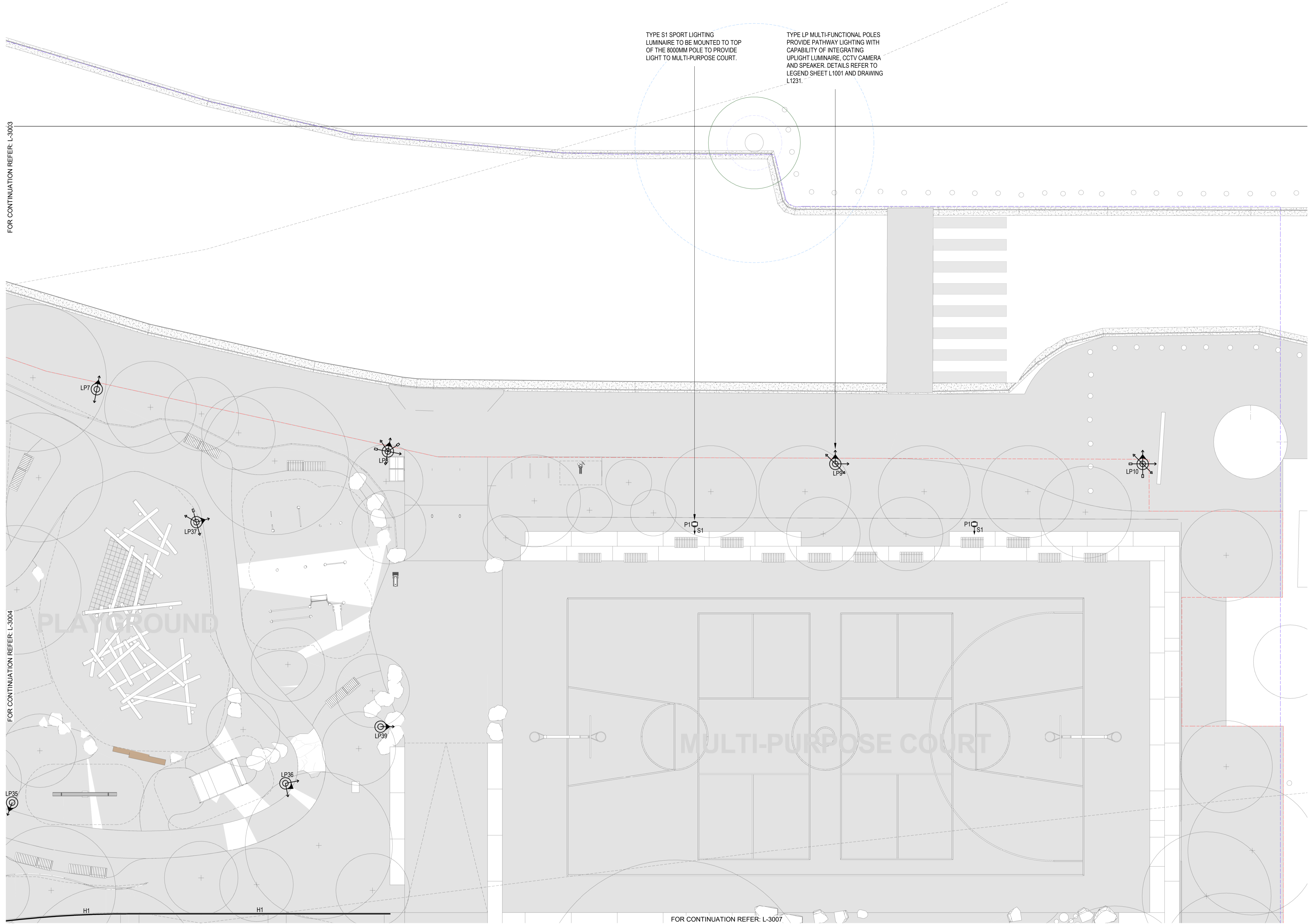
DRAWING TITLE  
**LIGHTING DESIGN  
LIGHTING LAYOUT - SHEET 05**

0 5m 10m						<b>A1</b>
DATE	DRAWN	DESIGNED	CHECKED	APPROVED	SCALE	
07/11/2025	AS	MR/AS	MR	MR	1 : 100	
NORTHPOINT	PROJECT No.	DRAWING No.	REVISION			
	247095	L-3005	D			

**TENDER**

FOR CONTINUATION REFER: L-3003

FOR CONTINUATION REFER: L-3004

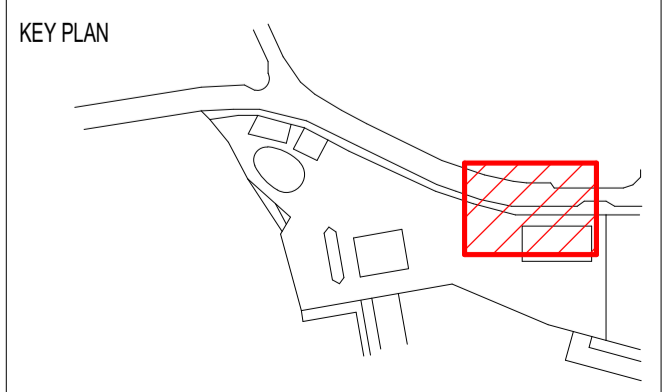


FOR CONTINUATION REFER: L-3007

DESIGNED UNDER QUALITY SYSTEM CERTIFIED AS COMPLYING WITH ISO 9001 BY AN ACCREDITED CERTIFICATION BODY

© Copyright. This Document and Design remains the copyright of Steensen Varming (Australia) Pty Ltd and cannot be reproduced in any way without prior consent. The contractor shall verify all dimensions and levels on site as this is not a workshop drawing. The contractor shall refer any discrepancies to the engineer before proceeding with the work. This drawing shall be read in conjunction with other contract documents, drawings and project specifications. This file has been checked by an antivirus program with the latest update. However new viruses are discovered everyday we recommend that this file is rescanned upon receipt.

AMENDMENTS		
REV	DESCRIPTION	DATE
A	TENDER ISSUE	27/02/2025
B	REVISED TENDER ISSUE	22/08/2025
C	REVISED TENDER ISSUE	04/09/2025
D	UPDATE FOR MODIFICATION	07/11/2025



Copenhagen  
London  
Sydney  
Canberra  
Hong Kong  
New York

Level 8, 9 Castlereagh St.  
Sydney, NSW, 2000, Australia  
ABN 50 001 189 037  
t : +61 / 02 9967 2200  
e : info@steensenvarming.com

**STEENSEN VARMING**

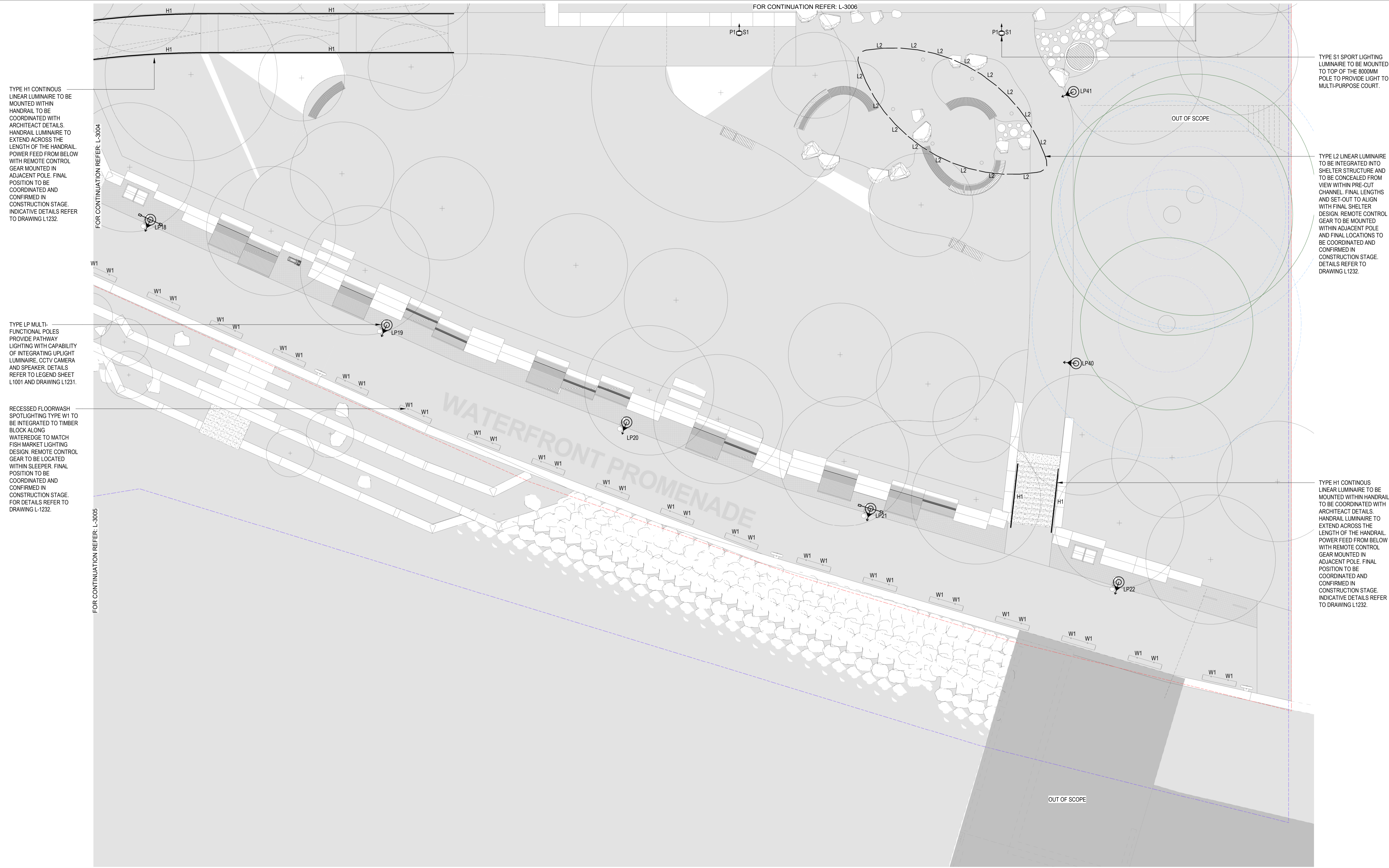
PROJECT  
**BANK STREET PARK  
BANK STREET, PYRMONT**

DRAWING TITLE  
**LIGHTING DESIGN  
LIGHTING LAYOUT - SHEET 06**

0 5m 10m					<b>A1</b>
DATE	DRAWN	DESIGNED	CHECKED	APPROVED	SCALE
07/11/2025	AS	MR/AS	MR	MR	1 : 100
NORTHPOINT	PROJECT No.	DRAWING No.	REVISION		
	247095	L-3006	<b>D</b>		

TENDER

Autodesk\_Docset/247095 - Bank Street Park\_247095-SV\3003\3004\3007\3001.rvt



TYPE H1 CONTINUOUS LINEAR LUMINAIRE TO BE MOUNTED WITHIN HANDRAIL TO BE COORDINATED WITH ARCHITECT DETAILS. HANDRAIL LUMINAIRE TO EXTEND ACROSS THE LENGTH OF THE HANDRAIL. POWER FEED FROM BELOW WITH REMOTE CONTROL GEAR MOUNTED IN ADJACENT POLE. FINAL POSITION TO BE COORDINATED AND CONFIRMED IN CONSTRUCTION STAGE. INDICATIVE DETAILS REFER TO DRAWING L1232.

TYPE LP MULTI-FUNCTIONAL POLES PROVIDE PATHWAY LIGHTING WITH CAPABILITY OF INTEGRATING UPLIGHT LUMINAIRE, CCTV CAMERA AND SPEAKER. DETAILS REFER TO LEGEND SHEET L1001 AND DRAWING L1231.

RECESSED FLOORWASH SPOTLIGHTING TYPE W1 TO BE INTEGRATED TO TIMBER BLOCK ALONG WATEREDGE TO MATCH FISH MARKET LIGHTING DESIGN. REMOTE CONTROL GEAR TO BE LOCATED WITHIN SLEEPER. FINAL POSITION TO BE COORDINATED AND CONFIRMED IN CONSTRUCTION STAGE. FOR DETAILS REFER TO DRAWING L-1232.

TYPE S1 SPORT LIGHTING LUMINAIRE TO BE MOUNTED TO TOP OF THE 8000MM POLE TO PROVIDE LIGHT TO MULTI-PURPOSE COURT.

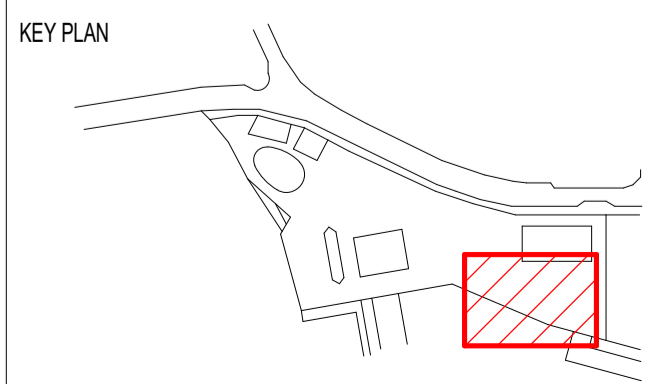
TYPE L2 LINEAR LUMINAIRE TO BE INTEGRATED INTO SHELTER STRUCTURE AND TO BE CONCEALED FROM VIEW WITHIN PRE-CUT CHANNEL. FINAL LENGTHS AND SET-OUT TO ALIGN WITH FINAL SHELTER DESIGN. REMOTE CONTROL GEAR TO BE MOUNTED WITHIN ADJACENT POLE AND FINAL LOCATIONS TO BE COORDINATED AND CONFIRMED IN CONSTRUCTION STAGE. DETAILS REFER TO DRAWING L1232.

TYPE H1 CONTINUOUS LINEAR LUMINAIRE TO BE MOUNTED WITHIN HANDRAIL TO BE COORDINATED WITH ARCHITECT DETAILS. HANDRAIL LUMINAIRE TO EXTEND ACROSS THE LENGTH OF THE HANDRAIL. POWER FEED FROM BELOW WITH REMOTE CONTROL GEAR MOUNTED IN ADJACENT POLE. FINAL POSITION TO BE COORDINATED AND CONFIRMED IN CONSTRUCTION STAGE. INDICATIVE DETAILS REFER TO DRAWING L1232.

DESIGNED UNDER QUALITY SYSTEM CERTIFIED AS COMPLYING WITH ISO 9001 BY AN ACCREDITED CERTIFICATION BODY

© Copyright. This Document and Design remains the copyright of Steensen Varming (Australia) Pty Ltd and cannot be reproduced in any way without prior consent. The contractor shall verify all dimensions and levels on site as this is not a workshop drawing. The contractor shall refer any discrepancies to the engineer before proceeding with the work. This drawing shall be read in conjunction with other contract documents, drawings and project specifications. This file has been checked by an antivirus program with the latest update. However new viruses are discovered everyday we recommend that this file is rescanned upon receipt.

AMENDMENTS		
REV	DESCRIPTION	DATE
A	TENDER ISSUE	27/02/2025
B	REVISED TENDER ISSUE	22/08/2025
C	REVISED TENDER ISSUE	04/09/2025
D	UPDATE FOR MODIFICATION	07/11/2025



Copenhagen  
London  
Sydney  
Canberra  
Hong Kong  
New York

Level 8, 9 Castlereagh St.  
Sydney, NSW, 2000, Australia  
ABN 50 001 189 037  
t : +61 / 02 9967 2200  
e : info@steensenvarming.com

**STEENSEN VARMING**

PROJECT  
**BANK STREET PARK  
BANK STREET, PYRMONT**

DRAWING TITLE  
**LIGHTING DESIGN  
LIGHTING LAYOUT - SHEET 07**

0 5m 10m					<b>A1</b>
DATE	DRAWN	DESIGNED	CHECKED	APPROVED	SCALE
07/11/2025	AS	MR/AS	MR	MR	1 : 100
NORTHPOINT	PROJECT No.	DRAWING No.	REVISION		
	247095	L-3007	<b>D</b>		

**TENDER**

Autodesk Docs/247095 - Bank Street Park 247095-SV-XXXXXX-01-L-001.rvt