

# Calala BESS



300MW - 1200MWh

Regional context




Part of Lot: 17/DP629969

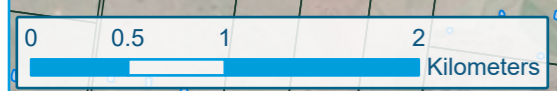
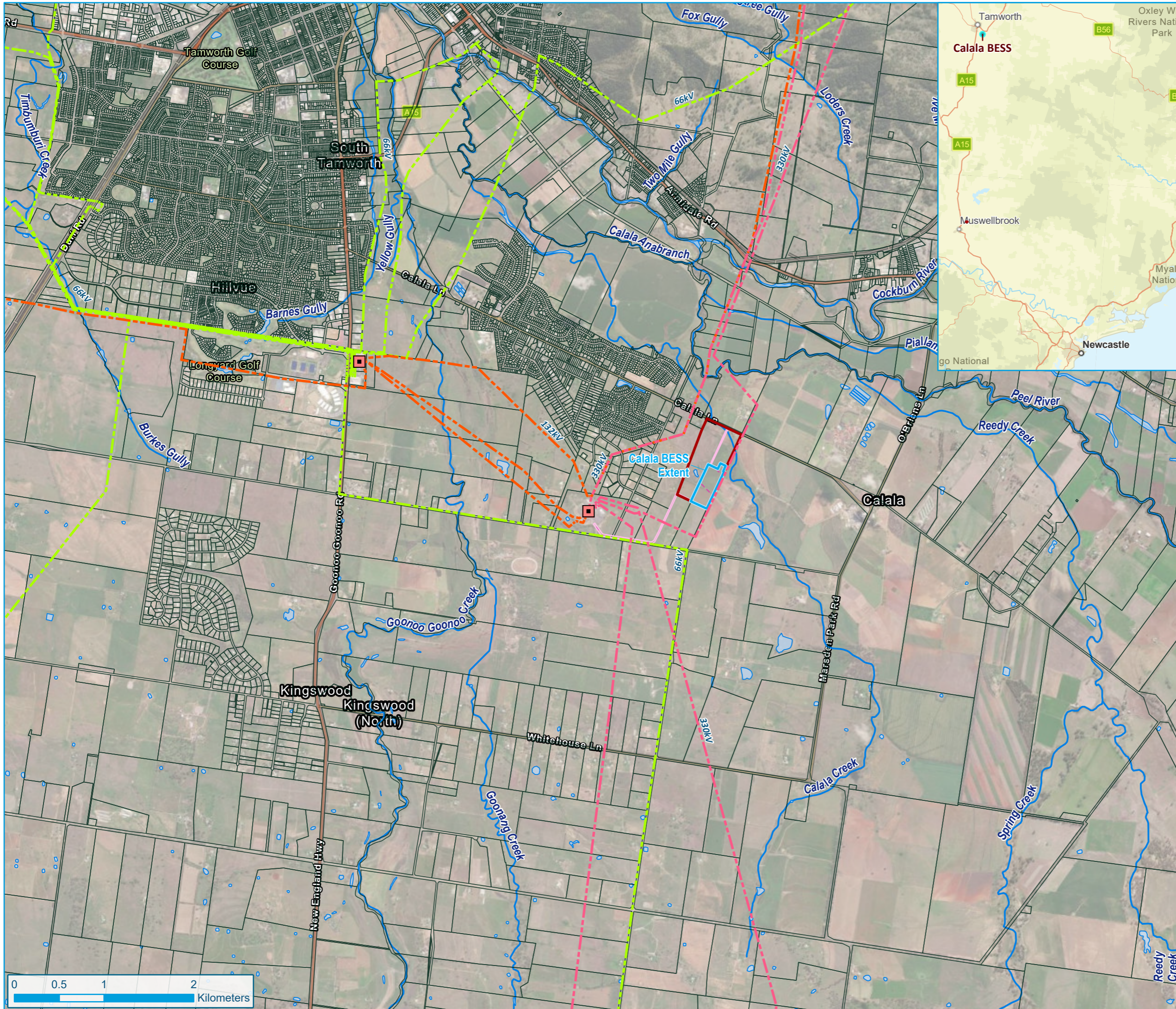
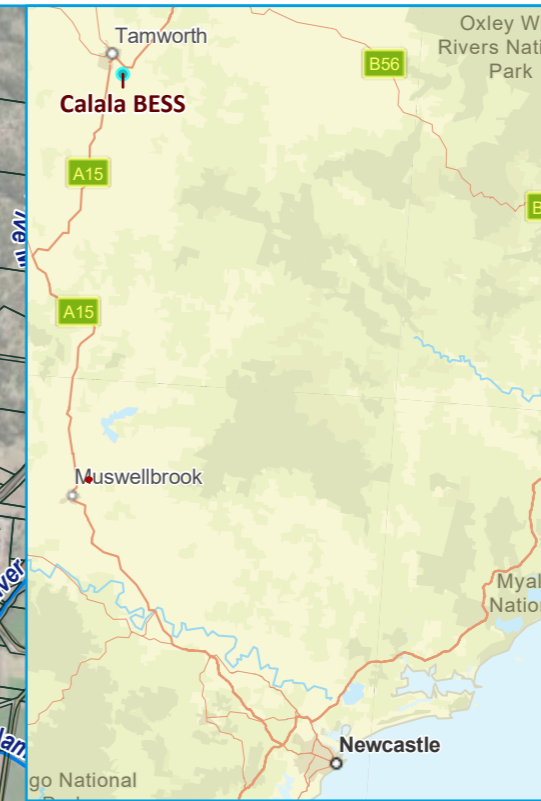
A-100

### Legend

-  Calala BESS extent
-  Electricity substation
-  Subject site
-  Property parcel
-  Development footprint

### Existing transmission line - Capacity (kV)

-  66
-  132
-  330



Scale: 1:39,000 @ A3  
Spatial Reference: GDA2020 MGA Zone 56



Notes: This plan is indicative for development approval only and subject to detailed design changes. It contains highly confidential and proprietary information that are of independent economic value to Equis. This drawing and design shall not be reproduced, amended, disclosed or distributed to others without the express written consent of Equis.