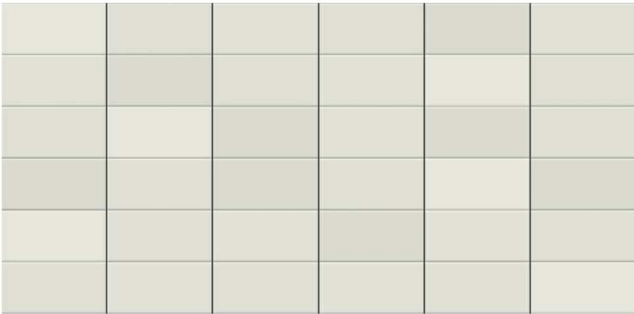
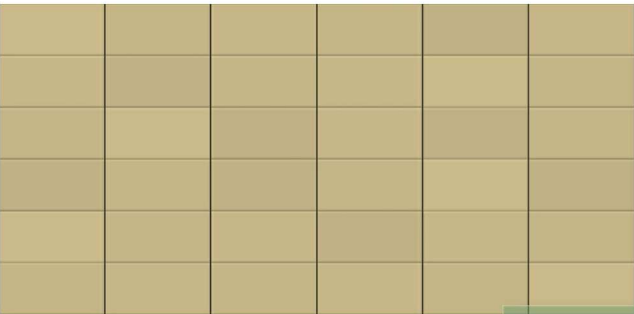


CODE	ITEM	COLOUR & FINISH	LOCATION
01a	SELECTED TERRACOTTA TILE CLADDING WITH SUSPENSION RAILS OVER MEMBRANE AND INSULATION ON LIGHTWEIGHT STEEL FRAME	ALLOW UPTO 4 COLOURS FROM THE STANDARD PALLETTE	PREDOMINANTLY ON IPU TOWER FACADE ON FLOOR LEVELS 2-5, EAST AND SOUTH FACADES OF THE PODIUM
01b	SELECTED TERRACOTTA FIXED SUNSCREEN SYSTEM OR EQUIVALENT APPROVED SYSTEM ON PROPRIETARY STEEL FRAME AS 75% OPEN SCREEN	ALLOW 2 COLOURS FROM THE STANDARD PALLETTE	TYPICALLY EXTERNAL OPEN STAIRS
02a	ANODIZED ALUMINIUM FRAMED STRIP WINDOW: 65% VISION GLASS, 35% GLAZED SHADOW BOX.	GLAZING: SELECTED VIRIDIAN PERFORMANCE GLASS FROM THE GREEN TINTED COLOUR RANGE SHADOW BOX SPANDREL: SELECTED COLOURS TO ANODIZED ALUMINIUM BACK PANS	PREDOMINANTLY ON IPU TOWER FACADE ON FLOOR LEVELS 2-5 AND FIRST FLOOR FACADE
02b	ANODIZED ALUMINIUM SPANDREL PANEL	ALLOW UP TO 4 SELECTED ANODIZED ALUMINIUM COLOURS	PREDOMINANTLY ON IPU TOWER FACADE ON FLOOR LEVELS 2-5
03a	SHOPFRONT GLAZING SYSTEM: 100% VISION GLASS TO UPTO 3.5m ABOVE FLOOR LEVEL	SELECTED VIRIDIAN PERFORMANCE GLASS FROM THE GREEN TINTED COLOUR RANGE	GROUND FLOOR NORTH (FRONT) FACADE
03b	SHOPFRONT GLAZING SYSTEM: 65% VISION GLASS; 35% ANODIZED ALUMINIUM SPANDREL PANEL TO UPTO 3.5m ABOVE FLOOR LEVEL	GLAZING: SELECTED VIRIDIAN PERFORMANCE GLASS FROM THE GREEN TINTED COLOUR RANGE SPANDREL PANEL: UPTO 4 SELECTED ANODIZED ALUMINIUM PANELS	GROUND AND FIRST FLOOR NORTH AND SOUTH FACADE
04a	CURTAIN WALL SYSTEM: 65% VISION GLASS 35% GLAZED SHADOW BOX SPANDREL	GLAZING: SELECTED VIRIDIAN PERFORMANCE GLASS FROM THE GREEN TINTED COLOUR RANGE SHADOW BOX SPANDREL: SELECTED COLOURS TO ANODIZED ALUMINIUM BACK PANS	GROUND FLOOR NORTH (FRONT) FACADE
04b	CURTAIN WALL SYSTEM: 60% VISION GLASS 40% ANODIZED ALUMINIUM SPANDREL PANEL	GLAZING: SELECTED VIRIDIAN PERFORMANCE GLASS FROM THE GREEN TINTED COLOUR RANGE SPANDREL PANEL: UPTO 4 SELECTED ANODIZED ALUMINIUM PANELS	TYPICALLY CENTRAL LIFT AND STAIR LOBBY AND ENDS OF CORRIDORS IN IPU TOWER
05	PRECAST CLADDING TO CONCRETE COLUMNS	WHITE BRIGHTONLITE CEMENT	EXPRESSED COLUMNS ON THE FRONT FACADE
06	SELECTED STANDING SEAM PROFILED METAL SHEET CLADDING OVER INSULATION ON LIGHTWEIGHT STEEL FRAME	SELECTED ANODIZED COLOUR	TYPICALLY EXTERNAL SERVICE RISERS; CENTRAL CORE FACADE AND PART EAST AND WEST PODIUM FACADE
07	VERTICAL ALUMINIUM SUNSHADING FINS	SELECTED ANODIZED COLOUR	SUNSHADING ON STRIP WINDOWS
08	EXTERIOR STRUCTURAL STEEL	WHITE; SEMI GLOSS	FRONT ENTRY CANOPY
09	CLEAR ROOF WITH INTEGRATED SOLAR PANELS	LAMINATED SERAPHIC GLASS OR EQUIVALENT. CUSTOM DESIGNED FRIT PATTERN	FRONT ENTRY CANOPY
10	FIXED ALUMINIUM LOUVERS	SELECTED ANODIZED COLOUR	GENERALLY PLANTROOM WALLS

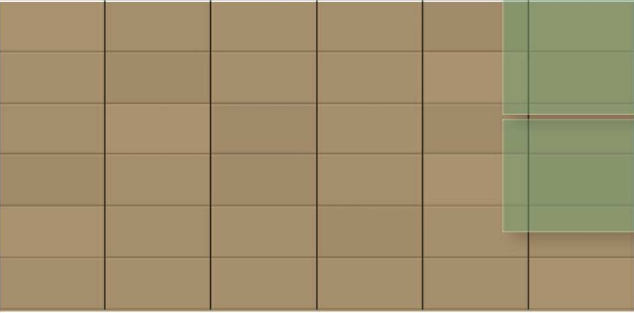
01a TERRACOTTA CLADDING
COLOUR: EUROPANEL 'WHITE-MATT' OR EQUIVALENT



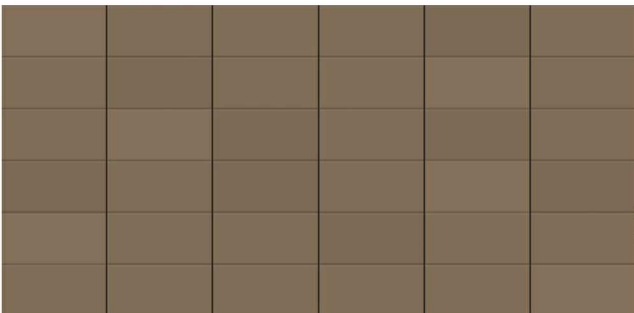
01a TERRACOTTA CLADDING
COLOUR: EUROPANEL 'CREAM' OR EQUIVALENT



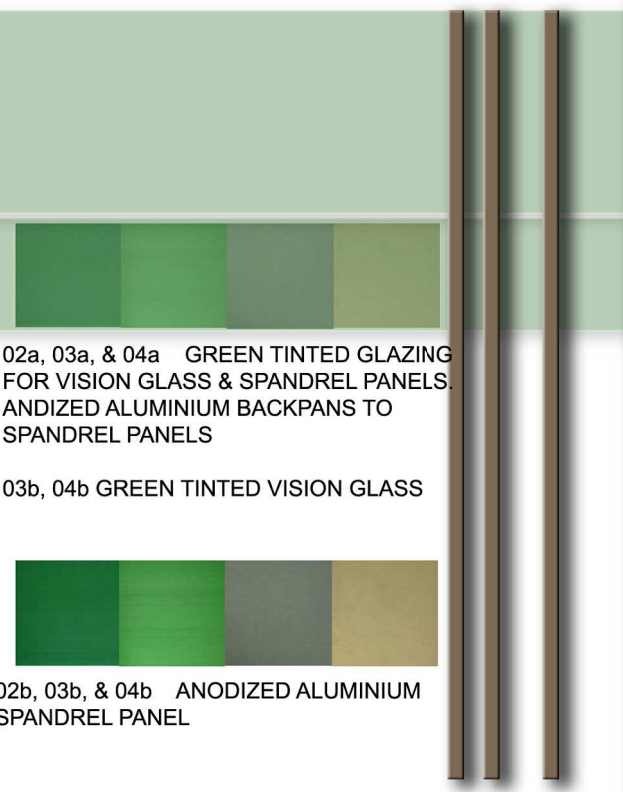
01a TERRACOTTA CLADDING
COLOUR: EUROPANEL 'PEARL-GREY' OR EQUIVALENT



01a TERRACOTTA CLADDING
COLOUR: EUROPANEL 'FLINT-GREY' OR EQUIVALENT



07 ALUMINIUM SUNSHADING FINS:ANODIZED
COLOUR TO MATCH PREDOMINANT
TERRACOTTA FACADE COLOUR



02a, 03a, & 04a GREEN TINTED GLAZING
FOR VISION GLASS & SPANDREL PANELS.
ANDIZED ALUMINIUM BACKPANS TO
SPANDREL PANELS

03b, 04b GREEN TINTED VISION GLASS



02b, 03b, & 04b ANODIZED ALUMINIUM
SPANDREL PANEL

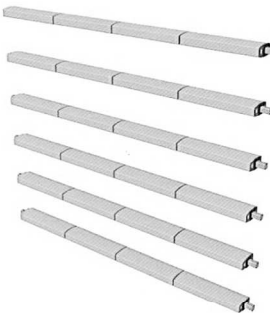
08 WHITE SEMIGLOSS EXTERIOR EXPOSED
STRUCTURAL STEEL



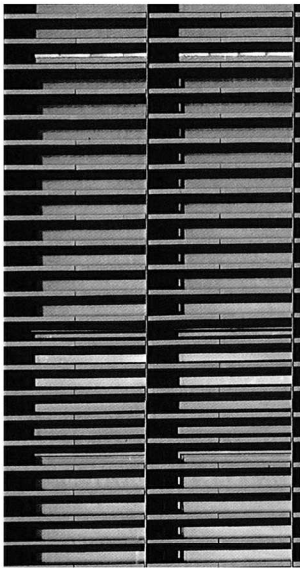
05 WHITE PRECAST CONCRETE



09 FRITTED LAMINATED GLAZED ROOF
WITH CUSTOM DESIGN



01b SELECTED TERRACOTTA SUN SCREEN
SYSTEM



06 SELECTED STANDING SEAM PROFILED METAL
SHEET WALL CLADDING



THIS DOCUMENT IS THE COPYRIGHT OF BILLARD LEECE PARTNERSHIP PTY LTD.
ALL INFORMATION CONTAINED HEREIN IS UNCLASSIFIED. IT IS THE PROPERTY OF BILLARD LEECE PARTNERSHIP PTY LTD. AND IS NOT TO BE REPRODUCED OR TRANSMITTED IN ANY FORM OR BY ANY MEANS, ELECTRONIC OR MECHANICAL, INCLUDING PHOTOCOPYING, RECORDING, OR BY ANY INFORMATION STORAGE AND RETRIEVAL SYSTEM, WITHOUT PERMISSION IN WRITING FROM BILLARD LEECE PARTNERSHIP PTY LTD.

KEY PLAN

REV	DESCRIPTION OF CHANGE	DRAWN	CHECK	DATE
1	100% SD Report Issue			30/11/2012
2	DA Submission			30/11/2012
3	DA SUBMISSION			12/02/2013
4	DA SUBMISSION			08/03/2013

STEENSENVARMING



QUANTITY SURVEYOR
Davis Langdon
An AECOM Company
L5 100 PACIFIC HIGHWAY P: 02 9956 8822
NORTH SYDNEY W: www.davislangdon.com/ANZ/
NSW 2060

CLIENT
NSW GOVERNMENT | **Health Infrastructure**
77 PACIFIC HIGHWAY P: 02 9578 5402
NORTH SYDNEY F: 02 8904 1377
NSW 2060 W: www.hinfra.health.nsw.gov.au

ARCHITECTS
BLP | Billard Leece Partnership Pty Ltd
Architects & Urban Planners
Studio 307, 50 Holt St
Sunny Hills 2010
NSW Australia
T +61 2 8096 4066
E info@blp.com.au
www.blp.com.au

PROJECT:
WAGGA WAGGA HEALTH SERVICES
REDEVELOPMENT
EDWARD STREET
WAGGA WAGGA, NSW, 2650

DRAWING TITLE:
ACUTE HOSPITAL PORTION B -
EXTERNAL FINISHES COLOUR
BOARD

Drawn: Author	Designed: Designer	Reviewed: Project Manager:
Checked: Checker	Design Reviewer:	Approved: Project Director:
PROJECT NUMBER: 12602	DRAWING NUMBER: AR.AH3.85.0002	ISSUE: 4
SCALE: NTS @A3		

FOR DA APPROVAL