

Nicky Blenkhorn  
Project Manager  
Frasers Property Australia  
Level 2, 1C Homebush Bay Drive  
Rhodes NSW 2138

Ref/Job No: **18SYD-9618**

26 September 2018

Dear Nicky,

**Re: Eastern Creek Business Hub Modification 4 Changes to Biodiversity Impact**

Eco Logical Australia (ELA) were engaged by Frasers Property Australia to determine whether terrestrial biodiversity impacts associated with Modification 4 are different from the approved plans for the Eastern Creek Business Hub.

The proposed modification includes:

- Relocated road alignment and construct roundabout
- Relocate overland stormwater channel
- Delete bioretention basin so that stormwater flows to a single basin east of the gas easement

The attached figure shows the approved development footprint (orange lines) and the Modification 4 (blue lines). The turquoise hatched area shows an area of 0.0192 ha where there will be a reduction in the amount of impact to native vegetation. The red hatched area shows an area of 0.002 ha where there will be an increase in impact. Over-all there is a reduction of direct impact to native vegetation of 0.017 ha.

Following construction of the overland flow path, the area of additional impact will be managed under a Vegetation Management Plan to be implemented on behalf of Western Sydney Parklands Trust. The proposed changes are very minor, but do have a slight improved outcome for biodiversity by avoiding impact on 0.017 ha.

Yours sincerely,



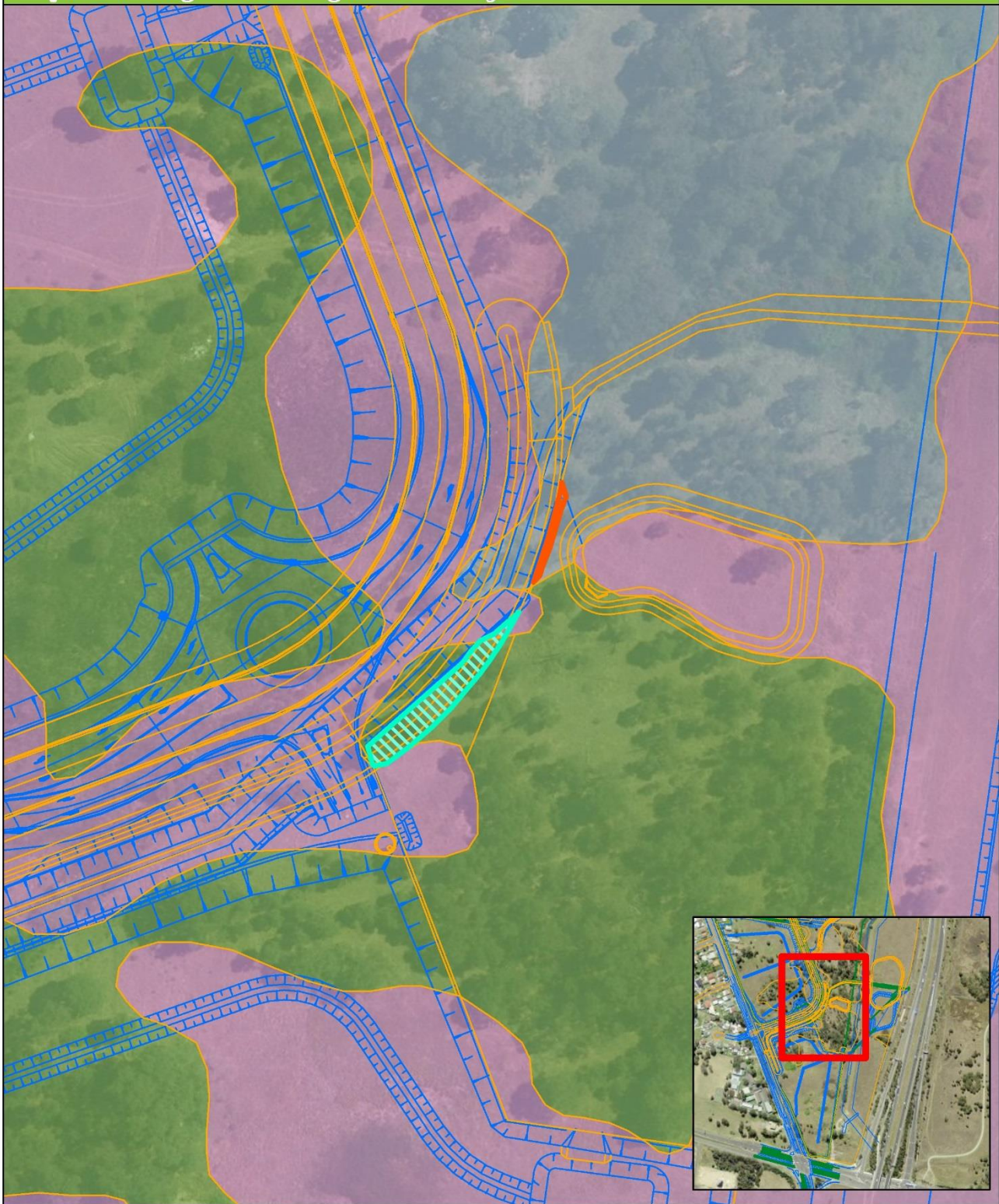
David Bonjer

Senior Consultant



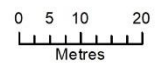
Changes to

### Proposed changes to drainage and road layout



#### Legend

-  Original drainage corridor
-  Amended drainage corridor
-  Decreased impact
-  Increased impact
-  Alluvial Woodland
-  Shale Plains Woodland
-  Weeds and exotics



Datum/Projection:  
GDA 1994 MGA Zone 56



Prepared by: BH and DO Date: 26/09/2018