



BULK EARTHWORKS PLAN
SCALE 1:1000

VOLUMES BREAKDOWN		
PHASE 1		
CUT	- 8,600m ³	
FILL	+ 39,600m ³	
PHASE 1b		
CUT	- 7,100m ³	
FILL	+ 77,500m ³	
PHASE 2		
CUT	- 21,950m ³	
FILL	+ 100,700m ³	

VOLUMES SUMMARY NOTES
LEVELS DATUM IS AHD.

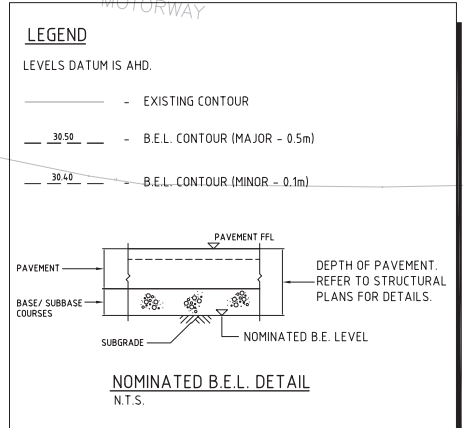
PRELIMINARY BULK EARTHWORKS VOLUMES BASED ON DIFFERENCE BETWEEN PROPOSED FLAT PAD OPTION AND EXISTING SURFACE WITH A NOMINAL TOPSOIL STRIP OF 200mm.

TOTAL:

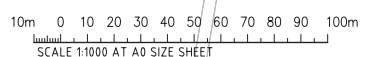
CUT - 37,650m³
 DETAILED EXCAVATION - 16,000m³
 ACCESS ROAD BOXING - 4,000m³
 FILL - 217,800m³
 BALANCE - 160,150m³ (i.e. IMPORT)

DETAIL EXCAVATION ALLOWANCE OF 1,000m³/ha FOR 16 Ha FOR TRENCHES, FOOTINGS, ETC.
 NO ALLOWANCE HAS BEEN MADE FOR RETAINING WALLS, BULKING OR COMPACTION OF FILLED SOILS.

NOTE:
 ABOVE VOLUMES INCLUDE ALLOWANCE FOR:
 200mm TOPSOIL STRIP
 650mm PAVEMENT DEPTH FOR ACCESS ROAD



FOR SECTION 96



AMENDMENTS	DATE	ISSUE
BATTER EXTENT UPDATED AND NEW VOLUMES REVISED	04.08.15	C
ISSUED FOR SECTION 96	21.07.15	B
FOR INFORMATION ONLY	30.03.15	A

AMENDMENTS	DATE	ISSUE	AMENDMENTS	DATE	ISSUE

ARCHITECT

CLIENT
Western Sydney Parklands Trust
 WESTERN SYDNEY PARKLANDS TRUST
 LEVEL 1, 10 VALENTE AVENUE
 PARRAMATTA NSW 2150

PROJECT
EASTERN CREEK BUSINESS HUB
 WESTERN SYDNEY PARKLANDS

DESIGNED: M.W. DATE: X.C. MAR 2015
 CHECKED: [] SIZE: AS SHOWN
 CAD REF: 12693.00-DA30

Costin Roe Consulting Pty Ltd.
 Consulting Engineers
 Level 1, 8 Windmill Street
 Walsh Bay, Sydney NSW 2000
 Tel: (02) 9551-7000 Fax: (02) 9541-3721
 email: mail@costinroe.com.au

CostinRoe Consulting
 Value in Engineering and Management

DRAWING TITLE
BULK EARTHWORKS PLAN
 DRAWING No: **C012693.00-DA30**