

**LEGEND**

- ▼ Former structure remnants (footings)
  - Sample from close to former structure remnants
  - ★ Recent fly tipping
  - ★ Remnant stockpile
  - Surface sample location
- 1 Area of Environmental Concern (AEC).  
Area of past and present market gardening
- 2-13 Area of Environmental Concern (AEC).  
Approximate envelope of former structures  
(primarily houses and sheds)  
- refer to historical aerial photographs



**Douglas Partners**  
*Geotechnics . Environment . Groundwater*

Sydney, Newcastle, Brisbane,  
Melbourne, Perth, Darwin,  
Wyong, Campbelltown, Canberra  
Townsville, Cairns, Wollongong

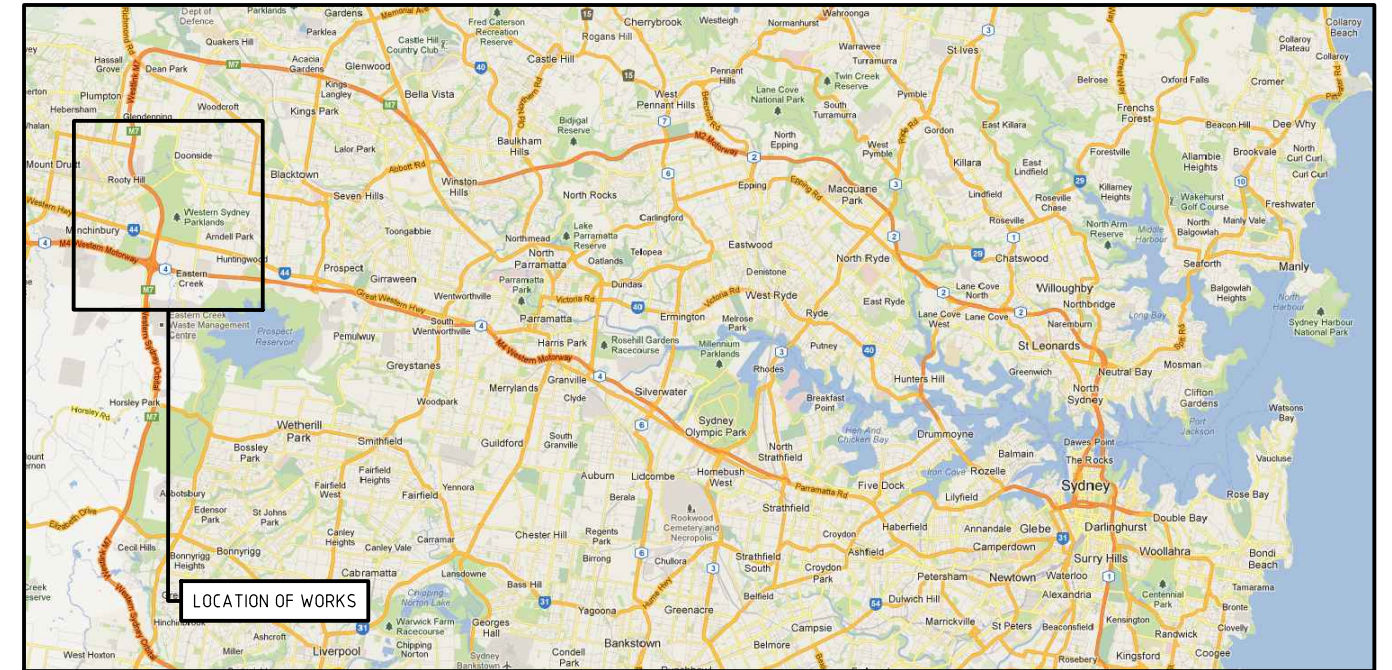
TITLE: **FIELDWORK LOCATIONS - NORTHERN SECTION  
ROOTY HILL ROAD SOUTH  
DOONSIDE**

CLIENT: Western Sydney Parklands Trust			
DRAWN BY: ALT	SCALE: 1:2500	PROJECT No: 71065.02	OFFICE: SYDNEY
APPROVED BY:	DATE: 9 November 2009	DRAWING No:	<b>1.2</b>

# ECBH ENVIRONMENTAL SITE ASSESSMENT



**LOCATION OF WORKS**  
SCALE 1:10,000 (A3)



**LOCALITY MAP**  
NOT TO SCALE

DRAWING NUMBER	DRAWING TITLE	REVISION
S12388.01-DWG-001	SITE LOCATION	A
S12388.01-DWG-002	SITE LAYOUT AND SAMPLING LOCATIONS	A
S12388.01-DWG-003	PROPOSED LAND DIVISION USE	A
S12388.01-DWG-004	SUPERLOT 1 - SAMPLE LOCATION PLAN	A
S12388.01-DWG-005	SUPERLOT 2, AREA A & AREA C - SAMPLE LOCATION PLAN	A
S12388.01-DWG-006	AREA X - SAMPLE LOCATION PLAN	A
S12388.01-DWG-007	AREA Y - SAMPLE LOCATION PLAN	A
S12388.01-DWG-008	GROUNDWATER ELEVATION PLAN	A

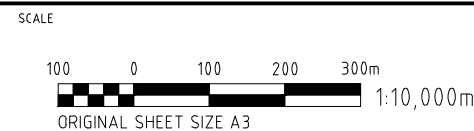
CAD FILE G:\CADD\SYDNEY\Project\12388.01 - Advice, Western Sydney Parklands Trust\Production Drawings\12388.01-DWG-001.dwg

REVISIONS

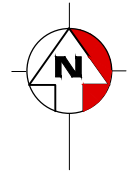
No.	BY	DATE	DESCRIPTION	APPD
A	MSM	21/11/12	DRAFT	APP

©COPYRIGHT CDM Smith  
This drawing is confidential and shall only be used for the purposes of this project.

DESIGNED	CHECKED	
DRAWN	MSM	CHECKED CG
APPROVED	MN	DATE 21/11/12



PROJECT	S12388.01 - ECBH ENVIRONMENTAL SITE ASSESSMENT		
TITLE	FIGURE 1 SITE LOCATION		
STATUS	DRAFT	DRG No.	S12388.01-DWG-001
REV.	A		

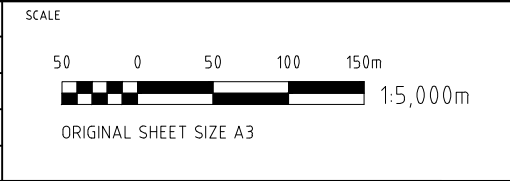


LEGEND	
	SUPERLOT / AREA BOUNDARY
	POTENTIAL LOCATION FOR ACTIVITY PLAYGROUND
	GAS PIPELINE EASEMENT
	BUFFER TO GAS PIPELINE
	OPEN SPACE / CUMBERLAND PLAIN WOODLAND
	PROPOSED STORMWATER CONTROL AREA
	PROPOSED BUILDING DEVELOPMENT LAYOUT
<b>1</b>	SUPERLOT
<b>P</b>	AREA
	BORE HOLE LOCATION
	TEST PIT LOCATION
	STOCKPILE LOCATION

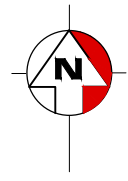
CAD FILE: G:\CADD\SYDNEY\Project\1512388.01 - Advice, Western Sydney Parklands Trust\Production Drawings\1512388.01-DWG-002.dwg

REVISIONS			
No.	BY	DATE	DESCRIPTION
A	MSM	21/11/12	DRAFT

DESIGNED				CHECKED	
DRAWN				MSM	CHECKED CG
APPROVED				MN	DATE 21/11/12
DATE PLOTTED: 07 December, 2012 - 2:47pm					



PROJECT S12388.01 - ECBH ENVIRONMENTAL SITE ASSESSMENT		
TITLE FIGURE 2 SITE LAYOUT & SAMPLING LOCATIONS		
STATUS DRAFT	DRG No. S12388.01-DWG-002	REV. A



LEGEND	
	SUPERLOT / AREA BOUNDARY
	POTENTIAL LOCATION FOR ACTIVITY PLAYGROUND
	GAS PIPELINE EASEMENT
	BUFFER TO GAS PIPELINE
	OPEN SPACE / CUMBERLAND PLAIN WOODLAND
	PROPOSED STORMWATER CONTROL AREA
	PROPOSED BUILDING DEVELOPMENT LAYOUT

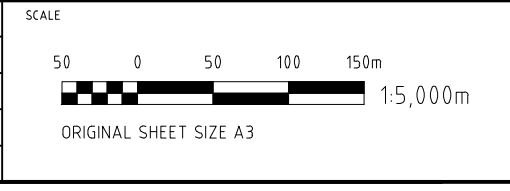
CAD FILE: G:\CADD\SYDNEY\Projects\S12388.01 - Advice, Western Sydney Parklands Trust\Production Drawings\S12388.01-DWG-003.dwg

REVISIONS			
No.	BY	DATE	DESCRIPTION
A	MSM	21/11/12	DRAFT

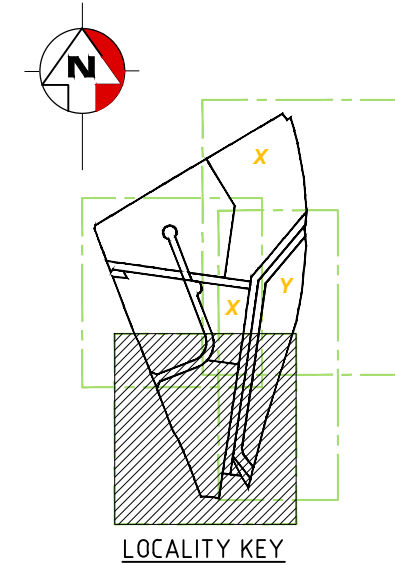
©COPYRIGHT CDM Smith  
This drawing is confidential and shall only be used for the purposes of this project.

DESIGNED	CHECKED		
DRAWN	MSM	CHECKED	CG
APPROVED	MN	DATE	21/11/12

DATE PLOTTED: 07 December, 2012 - 2:47pm



PROJECT S12388.01 - ECBH ENVIRONMENTAL SITE ASSESSMENT			
TITLE FIGURE 3 PROPOSED LAND DIVISION USE			
STATUS DRAFT	DRG No. S12388.01-DWG-003	REV. A	

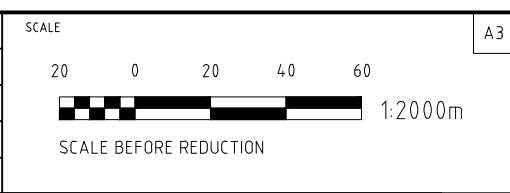


LEGEND	
	SUPERLOT / AREA BOUNDARY
	POTENTIAL LOCATION FOR ACTIVITY PLAYGROUND
	GAS PIPELINE EASEMENT
	BUFFER TO GAS PIPELINE
	OPEN SPACE / CUMBERLAND PLAIN WOODLAND
	PROPOSED STORMWATER CONTROL AREA
<b>1</b>	SUPERLOT
<b>P</b>	AREA
	BORE HOLE LOCATION
	TEST PIT LOCATION
	STOCKPILE LOCATION

CAD FILE: G:\CADD\SYDNEY\Projects\S12388.01 - Advice, Western Sydney Parklands Trust\Production Drawings\S12388.01-DWG-004.dwg

REVISIONS			
No.	BY	DATE	DESCRIPTION
A	MSM	21/11/12	DRAFT

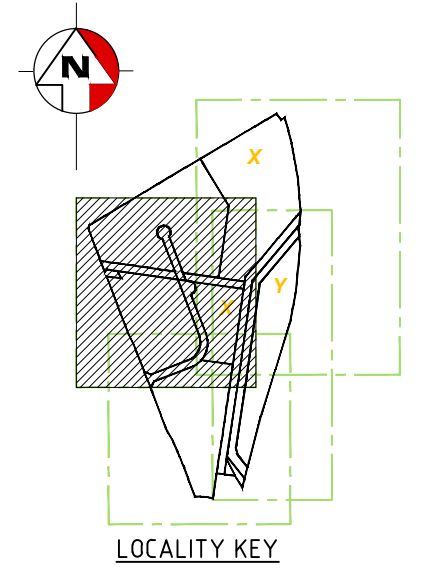
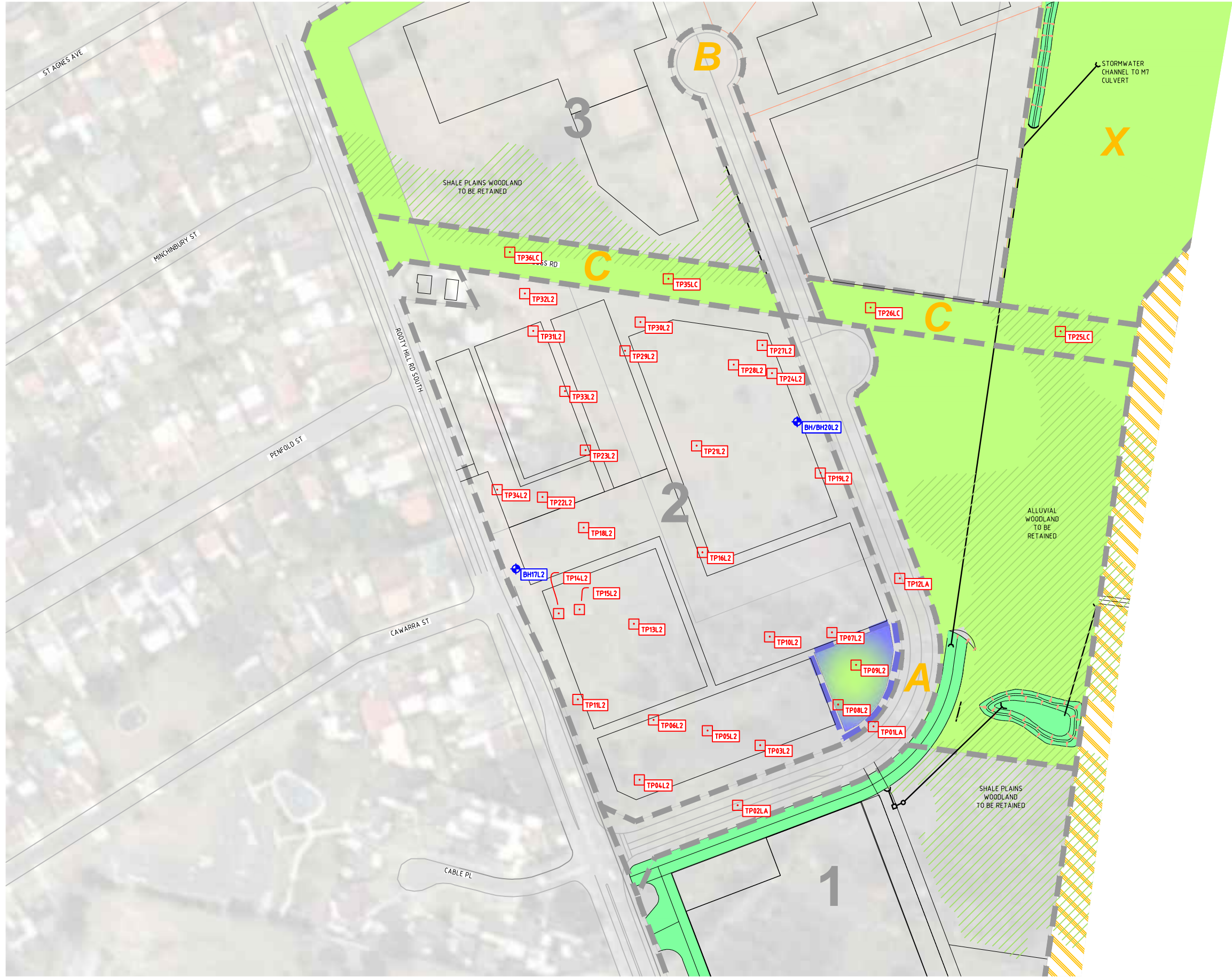
©COPYRIGHT CDM Smith This drawing is confidential and shall only be used for the purposes of this project.			
DESIGNED		CHECKED	
DRAWN	MSM	CHECKED	CD
APPROVED	MN	DATE	21/11/12
APPD	DATE PLOTTED: 07 December, 2012 - 2:47pm		



A3



PROJECT S12388.01 - ECBH ENVIRONMENTAL SITE ASSESSMENT		
TITLE FIGURE 4 SUPERLOT 1 - SAMPLE LOCATION PLAN		
STATUS DRAFT	DRG No. S12388.01-DWG-004	REV. A

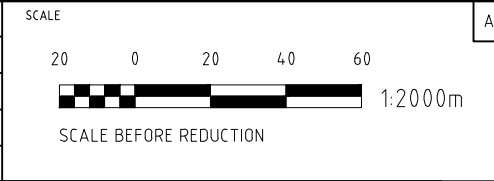


LEGEND	
	SUPERLOT / AREA BOUNDARY
	POTENTIAL LOCATION FOR ACTIVITY PLAYGROUND
	GAS PIPELINE EASEMENT
	BUFFER TO GAS PIPELINE
	OPEN SPACE / CUMBERLAND PLAIN WOODLAND
	PROPOSED STORMWATER CONTROL AREA
<b>1</b>	SUPERLOT
<b>P</b>	AREA
	BORE HOLE LOCATION
	TEST PIT LOCATION
	STOCKPILE LOCATION

CAD FILE: G:\CADD\SYDNEY\Project\1512388.01 - Advice, Western Sydney Parklands Trust\Production Drawings\1512388.01-DWG-005.dwg

REVISIONS	
No.	DESCRIPTION

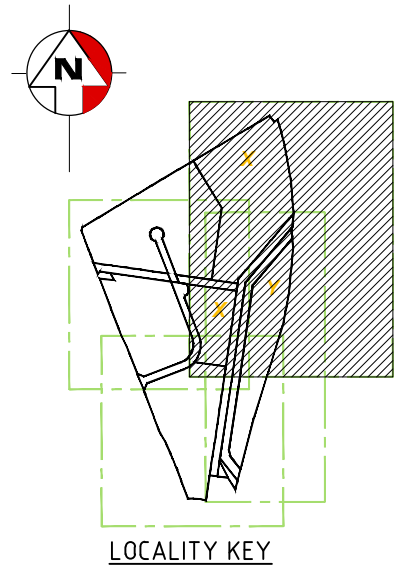
©COPYRIGHT CDM Smith This drawing is confidential and shall only be used for the purposes of this project.			
DESIGNED		CHECKED	
DRAWN	MSM	CHECKED	CG
APPROVED	MN	DATE	21/11/12
APPD		DATE PLOTTED:	07 December, 2012 - 2:47pm



A3



PROJECT	S12388.01 - ECBH ENVIRONMENTAL SITE ASSESSMENT		
TITLE	FIGURE 5 SUPERLOT 2, AREA A & AREA C SAMPLE LOCATION PLAN		
STATUS	DRAFT	DRG No.	S12388.01-DWG-005
REV	A		

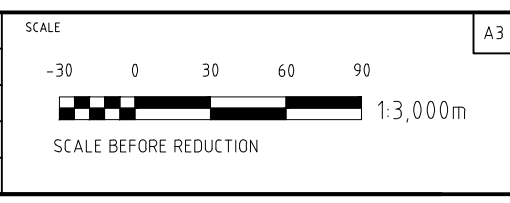


LEGEND	
	SUPERLOT / AREA BOUNDARY
	POTENTIAL LOCATION FOR ACTIVITY PLAYGROUND
	GAS PIPELINE EASEMENT
	BUFFER TO GAS PIPELINE
	OPEN SPACE / CUMBERLAND PLAIN WOODLAND
	PROPOSED STORMWATER CONTROL AREA
<b>1</b>	SUPERLOT
<b>P</b>	AREA
	BORE HOLE LOCATION
	TEST PIT LOCATION
	STOCKPILE LOCATION

CAD FILE: G:\CADD\SYDNEY\Project\AS12388.01 - Advice, Western Sydney Parklands Trust\Production Drawings\AS12388.01-DWG-006.dwg

REVISIONS			
No.	BY	DATE	DESCRIPTION
A	MSM	21/11/12	DRAFT

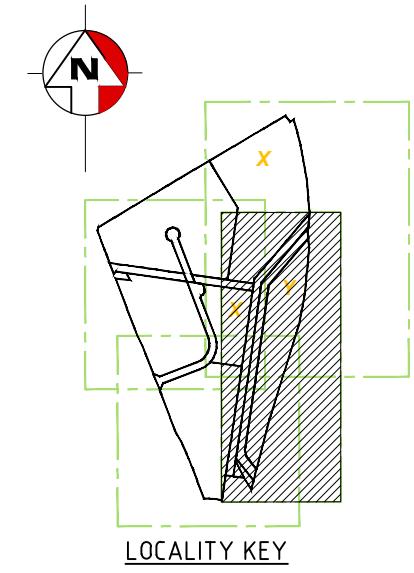
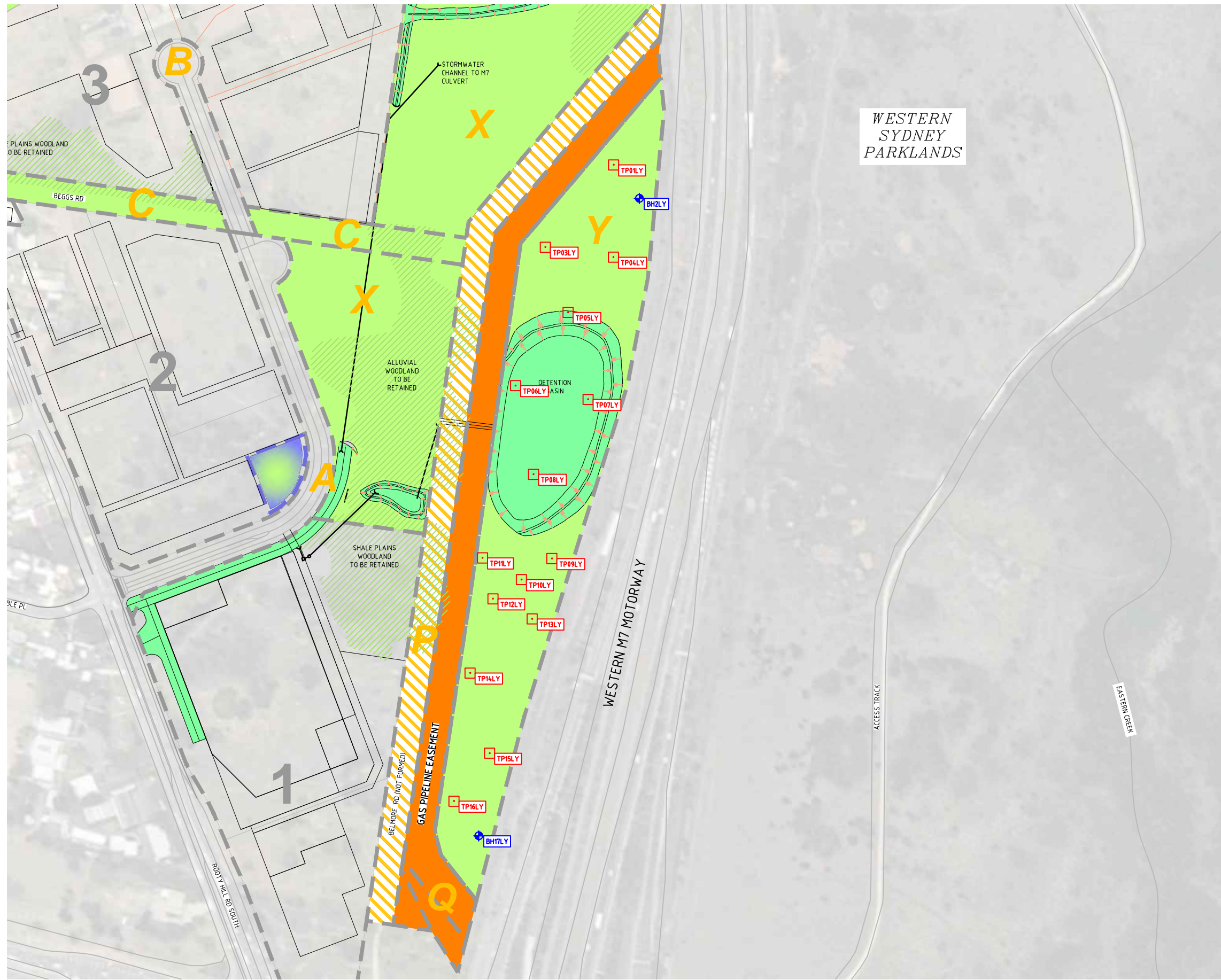
DESIGNED				CHECKED			
DRAWN				MSM	CHECKED		CG
APPROVED				MN	DATE		21/11/12
DATE PLOTTED: 07 December, 2012 - 2:47pm							



A3



PROJECT S12388.01 - ECBH ENVIRONMENTAL SITE ASSESSMENT		
TITLE FIGURE 6 AREA X SAMPLE LOCATION PLAN		
STATUS DRAFT	DRG No. S12388.01-DWG-006	REV. A



LEGEND	
	SUPERLOT / AREA BOUNDARY
	POTENTIAL LOCATION FOR ACTIVITY PLAYGROUND
	GAS PIPELINE EASEMENT
	BUFFER TO GAS PIPELINE
	OPEN SPACE / CUMBERLAND PLAIN WOODLAND
	PROPOSED STORMWATER CONTROL AREA
<b>1</b>	SUPERLOT
<b>P</b>	AREA
	BORE HOLE LOCATION
	TEST PIT LOCATION
	STOCKPILE LOCATION

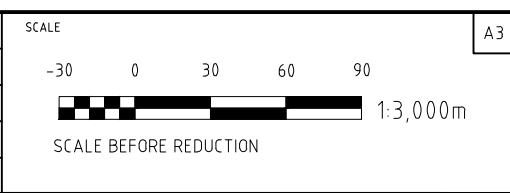
CAD FILE: G:\CAD\SYDNEY\Project\12388.01 - Advice, Western Sydney Parklands Trust\Production Drawings\12388.01-DWG-007.dwg

REVISIONS			
No.	BY	DATE	DESCRIPTION
A	MSM	21/11/12	DRAFT

©COPYRIGHT CDM Smith  
This drawing is confidential and shall only be used for the purposes of this project.

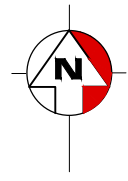
DESIGNED	CHECKED	
DRAWN	MSM	CHECKED CG
APPROVED	MN	DATE 21/11/12

DATE PLOTTED: 07 December, 2012 - 2:48pm



A3

PROJECT	S12388.01 - ECBH ENVIRONMENTAL SITE ASSESSMENT		
TITLE	FIGURE 7 AREA Y SAMPLE LOCATION PLAN		
STATUS	DRAFT	DRG No.	S12388.01-DWG-007
		REV.	A



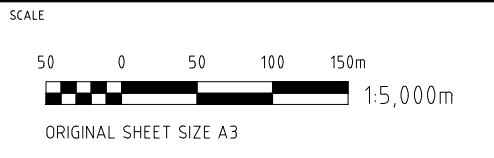
LEGEND	
	SUPERLOT/ AREA BOUNDARY
	BORE HOLE LOCATION
	GROUNDWATER CONTOUR LINE (0.5m INTERVAL) (ELEVATION m AHD)
	GROUNDWATER FLOW DIRECTION ARROW

CAD FILE: G:\CADD\SYDNEY\Projects\S12388.01 - Advice, Western Sydney Parklands Trust\Production Drawings\S12388.01-DWG-008.dwg

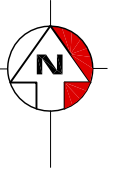
REVISIONS		DESIGNED		CHECKED	
No.	BY	DATE	DESCRIPTION	DATE PLOTTED: 07 December, 2012 - 2:48pm	
A	MSM	21/11/12	DRAFT	APPD	

©COPYRIGHT CDM Smith  
This drawing is confidential and shall only be used for the purposes of this project.

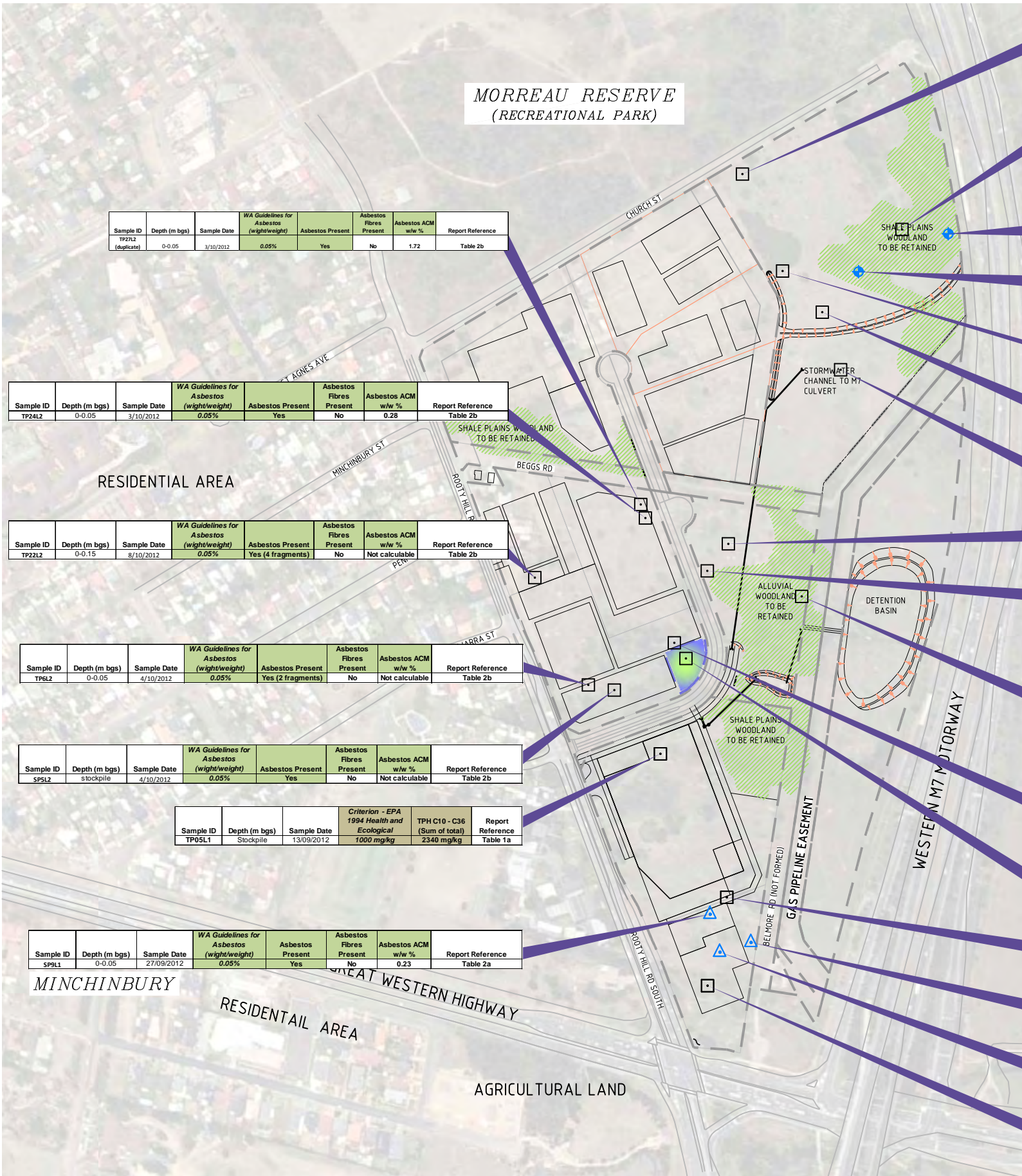
DESIGNED: [ ] CHECKED: [ ]  
DRAWN: MSM CHECKED: CG  
APPROVED: MN DATE: 21/11/12



PROJECT S12388.01 - ECBH ENVIRONMENTAL SITE ASSESSMENT		
TITLE FIGURE 8 GROUNDWATER CONTOUR PLAN		
STATUS DRAFT	DRG No. S12388.01-DWG-008	REV. A



MORREAU RESERVE  
(RECREATIONAL PARK)



Sample ID	Depth (m bgs)	Sample Date	WA Guidelines for Asbestos (wight/weight)	Asbestos Present	Asbestos Fibres Present	Asbestos ACM w/w %	Report Reference
TP21L (duplicate)	0-0.05	3/10/2012	0.05%	Yes	No	1.72	Table 2b

Sample ID	Depth (m bgs)	Sample Date	WA Guidelines for Asbestos (wight/weight)	Asbestos Present	Asbestos Fibres Present	Asbestos ACM w/w %	Report Reference
TP24L2	0-0.05	3/10/2012	0.05%	Yes	No	0.28	Table 2b

Sample ID	Depth (m bgs)	Sample Date	WA Guidelines for Asbestos (wight/weight)	Asbestos Present	Asbestos Fibres Present	Asbestos ACM w/w %	Report Reference
TP22L2	0-0.15	8/10/2012	0.05%	Yes (4 fragments)	No	Not calculable	Table 2b

Sample ID	Depth (m bgs)	Sample Date	WA Guidelines for Asbestos (wight/weight)	Asbestos Present	Asbestos Fibres Present	Asbestos ACM w/w %	Report Reference
TP6L2	0-0.05	4/10/2012	0.05%	Yes (2 fragments)	No	Not calculable	Table 2b

Sample ID	Depth (m bgs)	Sample Date	WA Guidelines for Asbestos (wight/weight)	Asbestos Present	Asbestos Fibres Present	Asbestos ACM w/w %	Report Reference
SP5L2	stockpile	4/10/2012	0.05%	Yes	No	Not calculable	Table 2b

Sample ID	Depth (m bgs)	Sample Date	Criterion - EPA 1994 Health and Ecological	TPH C10 - C36 (Sum of total)	Report Reference
TP05L1	Stockpile	13/09/2012	1000 mg/kg	2340 mg/kg	Table 1a

Sample ID	Depth (m bgs)	Sample Date	WA Guidelines for Asbestos (wight/weight)	Asbestos Present	Asbestos Fibres Present	Asbestos ACM w/w %	Report Reference
SP9L1	0-0.05	27/09/2012	0.05%	Yes	No	0.23	Table 2a

Sample ID	Depth (m bgs)	Sample Date	WA Guidelines for Asbestos (wight/weight)	Asbestos Present	Asbestos Fibres Present	Asbestos ACM w/w %	Report Reference
TP11X	0-0.05	21/09/2012	0.05%	Yes	No	Not calculable	Table 2d

Sample ID	Depth (m bgs)	Sample Date	Criterion NEPM 1999 HIL E <sup>2</sup>	Manganese	Report Reference
TP21X	0-0.05	24/09/2012	3000 mg/kg	3800 mg/kg	Table 1d

Sample ID	Depth (m bgs)	Sample Date	Asbestos Present	Asbestos Fibres Present	Asbestos ACM w/w %	AF w/w Analysis (%)	Report Reference	
TP21X	0-0.05	24/09/2012	Yes	Not calculable	YES	0.001%	0.0001	Table 2d

Sample ID	Depth (m bgs)	Sample Date	Criterion NEPM 1999 HIL E <sup>2</sup>	Manganese	Report Reference
BH20X	1.5-1.6	20/09/2012	3000 mg/kg	3100 mg/kg	Table 1d

Sample ID	Depth (m bgs)	Sample Date	Criterion NEPM 1999 HIL E <sup>2</sup>	Manganese	Report Reference
BH22X	0-0.05	19/09/2012	3000 mg/kg	3900 mg/kg	Table 1d

Sample ID	Depth (m bgs)	Sample Date	Criterion NEPM 1999 HIL E <sup>2</sup>	Manganese	Report Reference
TP23X	0-0.05	21/09/2012	3000 mg/kg	3200 mg/kg	Table 1d

Sample ID	Depth (m bgs)	Sample Date	Criterion NEPM 1999 HIL E <sup>2</sup>	Manganese	Report Reference
TP24X	0.1-0.15	21/09/2012	3000 mg/kg	3400 mg/kg	Table 1d

Sample ID	Depth (m bgs)	Sample Date	Criterion NEPM 1999 HIL E <sup>2</sup>	Manganese	Report Reference
TP28X	0.1-0.15	24/09/2012	3000 mg/kg	3900 mg/kg	Table 1d

Sample ID	Depth (m bgs)	Sample Date	WA Guidelines for Asbestos (wight/weight)	Asbestos Present	Asbestos Fibres Present	Asbestos ACM w/w %	Report Reference
TP38X	0-0.05	11/09/2012	0.05%	Yes (2 fragments)	No	Not calculable	Table 2d

Sample ID	Depth (m bgs)	Sample Date	WA Guidelines for Asbestos (wight/weight)	Asbestos Present	Asbestos Fibres Present	Asbestos ACM w/w %	Report Reference
TP43X	0-0.05	11/09/2012	0.05%	Yes	No	Not calculable	Table 2d

Sample ID	Depth (m bgs)	Sample Date	Criterion NEPM 1999 HIL E <sup>2</sup>	Copper	Criterion NEPM 1999 HIL E <sup>2</sup>	Lead	Report Reference
TP47X	0.1-0.15	13/09/2012	2000 mg/kg	11000 mg/kg	600 mg/kg	1100 mg/kg	Table 1d
	0.3-0.4			1400 mg/kg	770 mg/kg		

Sample ID	Depth (m bgs)	Sample Date	WA Guidelines for Asbestos (wight/weight)	Asbestos Present	Asbestos Fibres Present	Asbestos ACM w/w %	Report Reference
TP47X	0-0.05	11/09/2012	0.05%	Yes	No	3.75	Table 2d

Sample ID	Depth (m bgs)	Sample Date	Criterion NEPM 1999 HIL E <sup>2</sup>	Manganese	Report Reference
TP7L2	0-0.05	4/10/2012	3000 mg/kg	3300 mg/kg	Table 1b

Sample ID	Depth (m bgs)	Sample Date	Criterion NEPM 1999 HIL E <sup>2</sup>	Manganese	Report Reference
TP9L2	0-0.05	4/10/2012	3000 mg/kg	3700 mg/kg	Table 1b

Sample ID	Depth (m bgs)	Sample Date	WA Guidelines for Asbestos (wight/weight)	Asbestos Present	Asbestos Fibres Present	Asbestos ACM w/w %	Report Reference
TP16L1	0-0.05	26/09/2012	0.05%	Yes	No	Not calculable	Table 2a

Sample ID	Depth (m bgs)	Sample Date	Criterion NEPM 1999 HIL E <sup>2</sup>	Lead	Report Reference
SP6L1	0-0.05	27/09/2012	3000 mg/kg	610 mg/kg	Table 1a

Sample ID	Depth (m bgs)	Sample Date	WA Guidelines for Asbestos (wight/weight)	Asbestos Present	Asbestos Fibres Present	Asbestos ACM w/w %	Report Reference
SP6L1	0-0.05	27/09/2012	0.05%	Yes	No	4.84	Table 2a

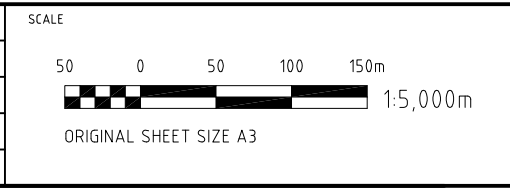
Sample ID	Depth (m bgs)	Sample Date	Criterion - EPA 1994 Health and Ecological	TPH C10 - C36 (Sum of total)	Report Reference
TP27L1B	0.1-0.15	27/09/2012	1000 mg/kg	2560 mg/kg	Table 1a

CAD FILE: G:\CAD\SYDNEY\PROJECTS\S12388.01 - Advice, Western Sydney Parklands Trust\Production Drawings\S12388.01-DWG-009.dwg

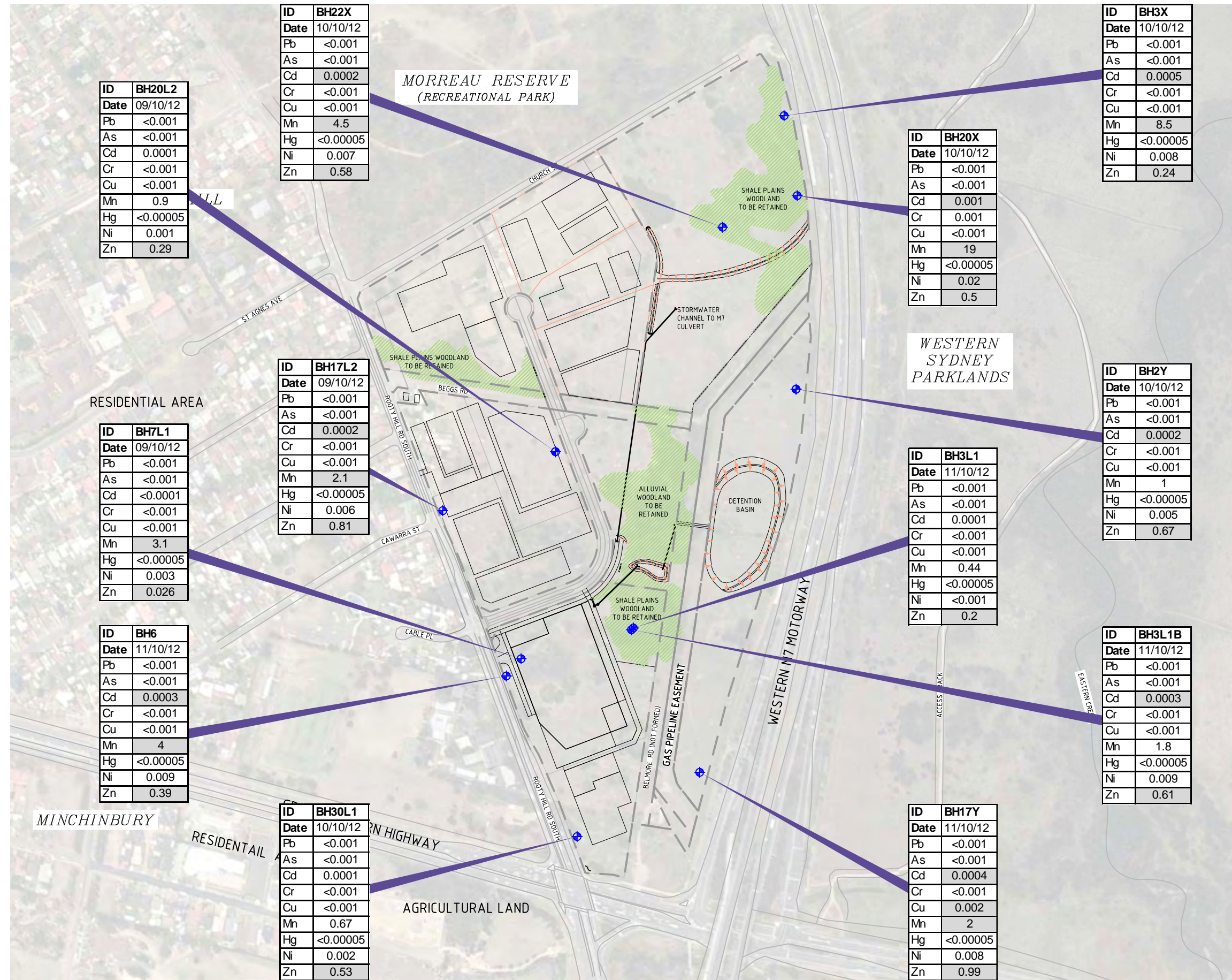
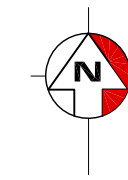
REVISIONS

No.	BY	DATE	DESCRIPTION
A	MSM	21/11/12	DRAFT

DESIGNED	CHECKED
MSM	CHEKED
APP	DATE
APPD	DATE PLOTTED: 21 January, 2013 - 11:16am



PROJECT	S12388.01 - ECBH ENVIRONMENTAL SITE ASSESSMENT
TITLE	FIGURE 9 SOIL CRITERIA EXCEEDANCES
STATUS	DRAFT
DRG No.	S12388.01-DWG-009
REV.	A



<b>ID</b>	<b>BH20L2</b>
<b>Date</b>	09/10/12
Pb	<0.001
As	<0.001
Cd	0.0001
Cr	<0.001
Cu	<0.001
Mn	0.9
Hg	<0.00005
Ni	0.001
Zn	0.29

<b>ID</b>	<b>BH22X</b>
<b>Date</b>	10/10/12
Pb	<0.001
As	<0.001
Cd	0.0002
Cr	<0.001
Cu	<0.001
Mn	4.5
Hg	<0.00005
Ni	0.007
Zn	0.58

<b>ID</b>	<b>BH3X</b>
<b>Date</b>	10/10/12
Pb	<0.001
As	<0.001
Cd	0.0005
Cr	<0.001
Cu	<0.001
Mn	8.5
Hg	<0.00005
Ni	0.008
Zn	0.24

<b>ID</b>	<b>BH20X</b>
<b>Date</b>	10/10/12
Pb	<0.001
As	<0.001
Cd	0.001
Cr	0.001
Cu	<0.001
Mn	19
Hg	<0.00005
Ni	0.02
Zn	0.5

<b>ID</b>	<b>BH2Y</b>
<b>Date</b>	10/10/12
Pb	<0.001
As	<0.001
Cd	0.0002
Cr	<0.001
Cu	<0.001
Mn	1
Hg	<0.00005
Ni	0.005
Zn	0.67

<b>ID</b>	<b>BH7L1</b>
<b>Date</b>	09/10/12
Pb	<0.001
As	<0.001
Cd	<0.0001
Cr	<0.001
Cu	<0.001
Mn	3.1
Hg	<0.00005
Ni	0.003
Zn	0.026

<b>ID</b>	<b>BH17L2</b>
<b>Date</b>	09/10/12
Pb	<0.001
As	<0.001
Cd	0.0002
Cr	<0.001
Cu	<0.001
Mn	2.1
Hg	<0.00005
Ni	0.006
Zn	0.81

<b>ID</b>	<b>BH3L1</b>
<b>Date</b>	11/10/12
Pb	<0.001
As	<0.001
Cd	0.0001
Cr	<0.001
Cu	<0.001
Mn	0.44
Hg	<0.00005
Ni	<0.001
Zn	0.2

<b>ID</b>	<b>BH3L1B</b>
<b>Date</b>	11/10/12
Pb	<0.001
As	<0.001
Cd	0.0003
Cr	<0.001
Cu	<0.001
Mn	1.8
Hg	<0.00005
Ni	0.009
Zn	0.61

<b>ID</b>	<b>BH6</b>
<b>Date</b>	11/10/12
Pb	<0.001
As	<0.001
Cd	0.0003
Cr	<0.001
Cu	<0.001
Mn	4
Hg	<0.00005
Ni	0.009
Zn	0.39

<b>ID</b>	<b>BH30L1</b>
<b>Date</b>	10/10/12
Pb	<0.001
As	<0.001
Cd	0.0001
Cr	<0.001
Cu	<0.001
Mn	0.67
Hg	<0.00005
Ni	0.002
Zn	0.53

<b>ID</b>	<b>BH17Y</b>
<b>Date</b>	11/10/12
Pb	<0.001
As	<0.001
Cd	0.0004
Cr	<0.001
Cu	0.002
Mn	2
Hg	<0.00005
Ni	0.008
Zn	0.99

Analyte	Criteria
Pb	0.0034
As	
Cd	0.0002
Cr	
Cu	0.0014
Mn	1.9
Hg	0.0006
Ni	0.011
Zn	0.008

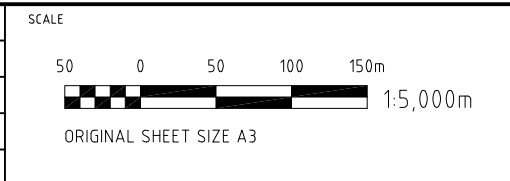
**NOTES**

- ALL CONCENTRATIONS ARE IN MG/L.
- CRITERIA USED ARE FROM ANZECC & ARMCANZ (2000) 95% LEVEL OF PROTECTION FOR FRESHWATER ECOSYSTEMS. GREY SHADING INDICATES SAMPLE CONCENTRATION EXCEEDENCE OF THE RELEVANT CRITERION.
- ALL SAMPLES WERE FILTERED PRIOR TO ANALYSIS.

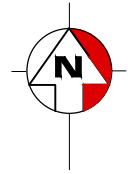
CAD FILE: G:\CAD\SYDNEY\Projects\S12388.01 - Advice, Western Sydney Parklands Trust\Production Drawings\S12388.01-DWG-010.dwg

No.	BY	DATE	DESCRIPTION
A	MSM	21/11/12	DRAFT

DESIGNED				CHECKED			
DRAWN		MSM	CHECKED		CG		
APPROVED		MN	DATE		21/11/12		
APPD				DATE PLOTTED: 07 December, 2012 - 2:56pm			



PROJECT S12388.01 - ECBH ENVIRONMENTAL SITE ASSESSMENT			
TITLE FIGURE 10 GROUNDWATER CRITERIA EXCEEDENCES			
STATUS	DRAFT	DRG No.	S12388.01-DWG-010
REV.	A		

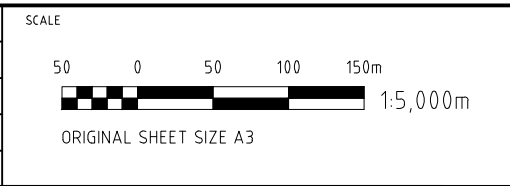


LEGEND	
	SUPERLOT / AREA BOUNDARY
	POTENTIAL LOCATION FOR ACTIVITY PLAYGROUND
	GAS PIPELINE EASEMENT
	BUFFER TO GAS PIPELINE
	OPEN SPACE / CUMBERLAND PLAIN WOODLAND
	PROPOSED STORMWATER CONTROL AREA
	PROPOSED BUILDING DEVELOPMENT LAYOUT
<b>1</b>	SUPERLOT
<b>P</b>	AREA
	BORE HOLE LOCATION
	TEST PIT LOCATION
	STOCKPILE LOCATION
	IDENTIFIED FILL WITH WASTE CONTENT LOCATION
	IDENTIFIED ASBESTOS MATERIAL LOCATION

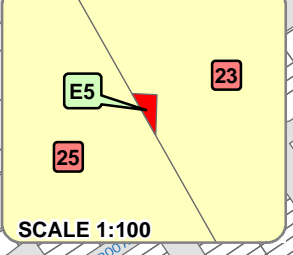
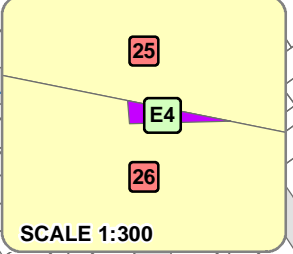
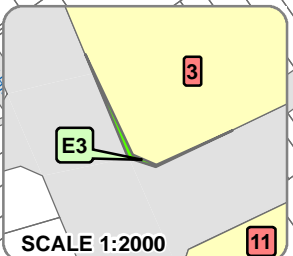
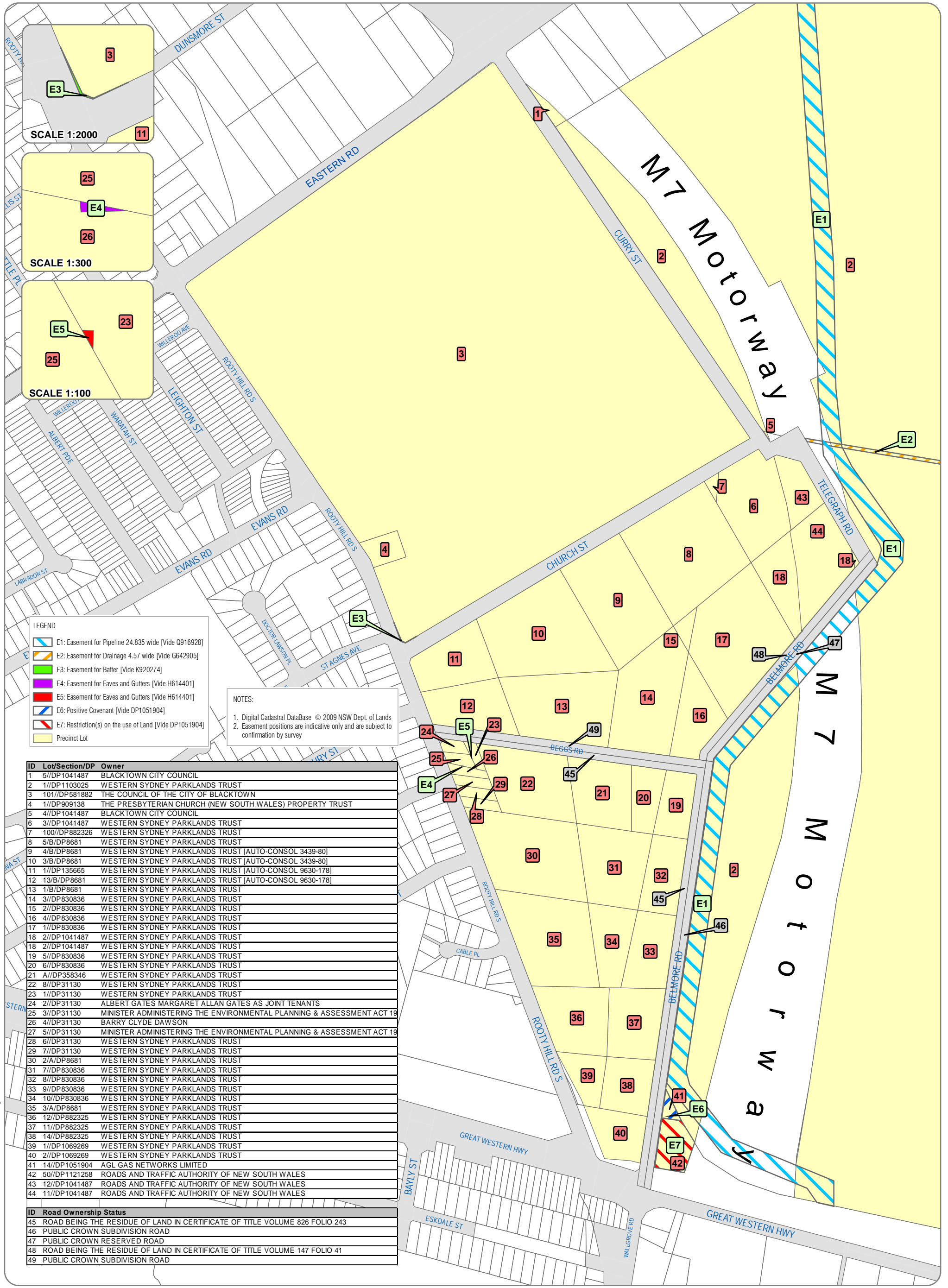
CAD FILE: G:\CADD\SYDNEY\Projects\S12388.01 - Advice, Western Sydney Parklands Trust\Production Drawings\S12388.01-DWG-011.dwg

REVISIONS	
No.	DESCRIPTION

©COPYRIGHT CDM Smith This drawing is confidential and shall only be used for the purposes of this project.			
DESIGNED		CHECKED	
DRAWN	MSM	CHECKED	CG
APPROVED	MN	DATE	10/12/12
APPD		DATE PLOTTED:	10 December, 2012 - 4:56pm



PROJECT S12388.01 - ECBH ENVIRONMENTAL SITE ASSESSMENT		
TITLE FIGURE 11 ASBESTOS AND WASTE LOCATION LOCATIONS		
STATUS DRAFT	DRG No. S12388.01-DWG-011	REV. A



**LEGEND**

- E1: Easement for Pipeline 24.835 wide [Vide Q916928]
- E2: Easement for Drainage 4.57 wide [Vide G642905]
- E3: Easement for Batter [Vide K920274]
- E4: Easement for Eaves and Gutters [Vide H614401]
- E5: Easement for Eaves and Gutters [Vide H614401]
- E6: Positive Covenant [Vide DP1051904]
- E7: Restriction(s) on the use of Land [Vide DP1051904]
- Precinct Lot

**NOTES:**

1. Digital Cadastral DataBase © 2009 NSW Dept. of Lands
2. Easement positions are indicative only and are subject to confirmation by survey

ID	Lot/Section/DP	Owner
1	5//DP1041487	BLACKTOWN CITY COUNCIL
2	1//DP1103025	WESTERN SYDNEY PARKLANDS TRUST
3	101//DP581882	THE COUNCIL OF THE CITY OF BLACKTOWN
4	1//DP909138	THE PRESBYTERIAN CHURCH (NEW SOUTH WALES) PROPERTY TRUST
5	4//DP1041487	BLACKTOWN CITY COUNCIL
6	3//DP1041487	WESTERN SYDNEY PARKLANDS TRUST
7	100//DP882326	WESTERN SYDNEY PARKLANDS TRUST
8	5//DP8681	WESTERN SYDNEY PARKLANDS TRUST
9	4//DP8681	WESTERN SYDNEY PARKLANDS TRUST [AUTO-CONSOL 3439-80]
10	3//DP8681	WESTERN SYDNEY PARKLANDS TRUST [AUTO-CONSOL 3439-80]
11	1//DP135665	WESTERN SYDNEY PARKLANDS TRUST [AUTO-CONSOL 9630-178]
12	13//DP8681	WESTERN SYDNEY PARKLANDS TRUST [AUTO-CONSOL 9630-178]
13	1//DP8681	WESTERN SYDNEY PARKLANDS TRUST
14	3//DP830836	WESTERN SYDNEY PARKLANDS TRUST
15	2//DP830836	WESTERN SYDNEY PARKLANDS TRUST
16	4//DP830836	WESTERN SYDNEY PARKLANDS TRUST
17	1//DP830836	WESTERN SYDNEY PARKLANDS TRUST
18	2//DP1041487	WESTERN SYDNEY PARKLANDS TRUST
19	2//DP1041487	WESTERN SYDNEY PARKLANDS TRUST
20	5//DP830836	WESTERN SYDNEY PARKLANDS TRUST
21	A//DP358346	WESTERN SYDNEY PARKLANDS TRUST
22	8//DP31130	WESTERN SYDNEY PARKLANDS TRUST
23	1//DP31130	WESTERN SYDNEY PARKLANDS TRUST
24	2//DP31130	ALBERT GATES MARGARET ALLAN GATES AS JOINT TENANTS
25	3//DP31130	MINISTER ADMINISTERING THE ENVIRONMENTAL PLANNING & ASSESSMENT ACT 19
26	4//DP31130	BARRY CLYDE DAWSON
27	5//DP31130	MINISTER ADMINISTERING THE ENVIRONMENTAL PLANNING & ASSESSMENT ACT 19
28	6//DP31130	WESTERN SYDNEY PARKLANDS TRUST
29	7//DP31130	WESTERN SYDNEY PARKLANDS TRUST
30	2//A//DP8681	WESTERN SYDNEY PARKLANDS TRUST
31	7//DP830836	WESTERN SYDNEY PARKLANDS TRUST
32	8//DP830836	WESTERN SYDNEY PARKLANDS TRUST
33	9//DP830836	WESTERN SYDNEY PARKLANDS TRUST
34	10//DP830836	WESTERN SYDNEY PARKLANDS TRUST
35	3//A//DP8681	WESTERN SYDNEY PARKLANDS TRUST
36	12//DP882325	WESTERN SYDNEY PARKLANDS TRUST
37	11//DP882325	WESTERN SYDNEY PARKLANDS TRUST
38	14//DP882325	WESTERN SYDNEY PARKLANDS TRUST
39	1//DP1069269	WESTERN SYDNEY PARKLANDS TRUST
40	2//DP1069269	WESTERN SYDNEY PARKLANDS TRUST
41	14//DP1051904	AGL GAS NETWORKS LIMITED
42	50//DP1121258	ROADS AND TRAFFIC AUTHORITY OF NEW SOUTH WALES
43	12//DP1041487	ROADS AND TRAFFIC AUTHORITY OF NEW SOUTH WALES
44	11//DP1041487	ROADS AND TRAFFIC AUTHORITY OF NEW SOUTH WALES

ID	Road Ownership Status
45	ROAD BEING THE RESIDUE OF LAND IN CERTIFICATE OF TITLE VOLUME 826 FOLIO 243
46	PUBLIC CROWN SUBDIVISION ROAD
47	PUBLIC CROWN RESERVED ROAD
48	ROAD BEING THE RESIDUE OF LAND IN CERTIFICATE OF TITLE VOLUME 147 FOLIO 41
49	PUBLIC CROWN SUBDIVISION ROAD

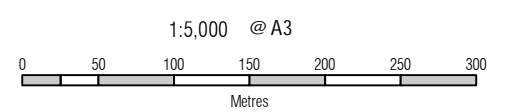
P:\F719\Mapping\Acad-Gis\F719-G-003b.mxd, 7/05/2010 12:06:16 PM, by fnozazhari

No.	Date	Revision Details	INI
B	30-04-2010	Ownership information updated, Easements added	KDS
A	20-07-2009	Table Amended	SAS



CHECKED BY/DATE: KDS/07-05-2010  
 APPROVED BY/DATE: DWF/07-05-2010  
 GIS REF: F719-G-003b.mxd  
 JOB REF: F719

CO-ORDS: MGA  
 DATUM: N/A  
 DATE OF PLAN: 07-05-2010



© Whelans InSites Pty Ltd



PROJECT No.	C121009
FILE NAME	F005
DATE	30.04.13
DRAWN	RR
APPROVED	RO



SOURCE: NEARMAPS.COM

CLIENT  
**WESTERN SYDNEY PARKLANDS TRUST**

PROJECT  
 REMEDIATION ACTION PLAN  
 PHASE 1 EARLY WORKS FOR  
 EASTERN CREEK BUSINESS HUB,  
 ROOTY HILL, NSW

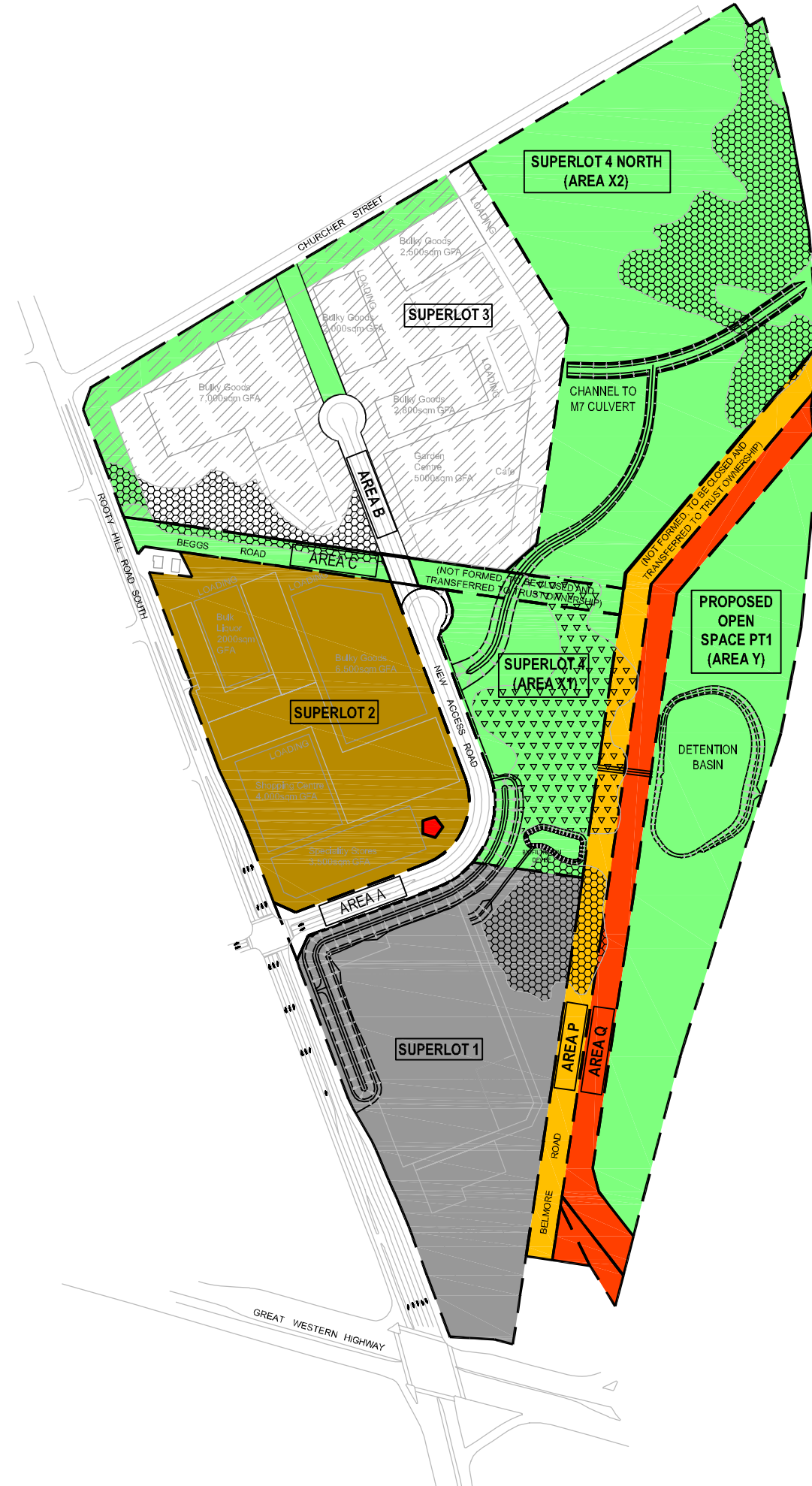
TITLE  
**SITE LOCATION PLAN**

FIGURE No.

**1**

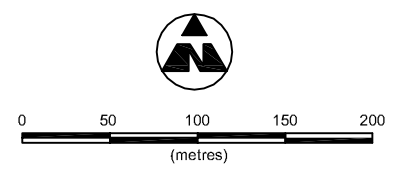
**CONSARA**

CONTAMINATED SITES assessment • remediation • advice



PROJECT No. C121009  
 FILE NAME F006  
 DATE 30.04.13  
 DRAWN RR  
 APPROVED RO

- LEGEND**
- SUPERLOT BOUNDARY
  - POTENTIAL LOCATION FOR ACTIVITY / PLAY GROUND
  - BULKY GOODS / LARGE FORMAT RETAIL
  - CONVENIENCE RETAIL / LARGE FORMAT RETAIL / BULKY GOODS
  - BULKY GOODS / LARGE FORMAT RETAIL
  - OPEN SPACE / CPW / CONSERVATION
  - GAS MAIN EASEMENT
  - BUFFER TO GAS MAIN (OPEN SPACE / CONSERVATION)
  - SHALE PLAINS WOODLAND (CPW) TO BE RETAINED
  - ALLUVIAL WOODLAND (CPW) TO BE RETAINED
  - STORMWATER CHANNELS



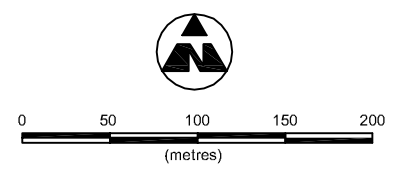
CLIENT  
**WESTERN SYDNEY PARKLANDS TRUST**

PROJECT  
 REMEDIATION ACTION PLAN  
 PHASE 1 EARLY WORKS  
 EASTERN CREEK BUSINESSHUB,  
 ROOTY HILL, NSW

TITLE  
**SITE LAYOUT**

PROJECT No. C121009  
 FILE NAME F007  
 DATE 30.04.13  
 DRAWN RR  
 APPROVED RO

- LEGEND**
- CURRENT PROPERTY BOUNDARIES
  - (A): Q916928 - EASEMENT FOR PIPELINE 24.385 WIDE (VIDE DP 499004)
  - (B): PROPOSED PIPELINE EASEMENT 5 WIDE AND 7.5 WIDE (VIDE DP1044968)
  - (W1): PROPOSED EASEMENT FOR DRAINAGE OF WATER 10 WIDE
  - (W2): PROPOSED TEMPORARY EASEMENT FOR DRAINAGE OF WATER 8 WIDE
  - (CPW): CUMBERLAND PLAIN WOODLAND PROTECTION AREA



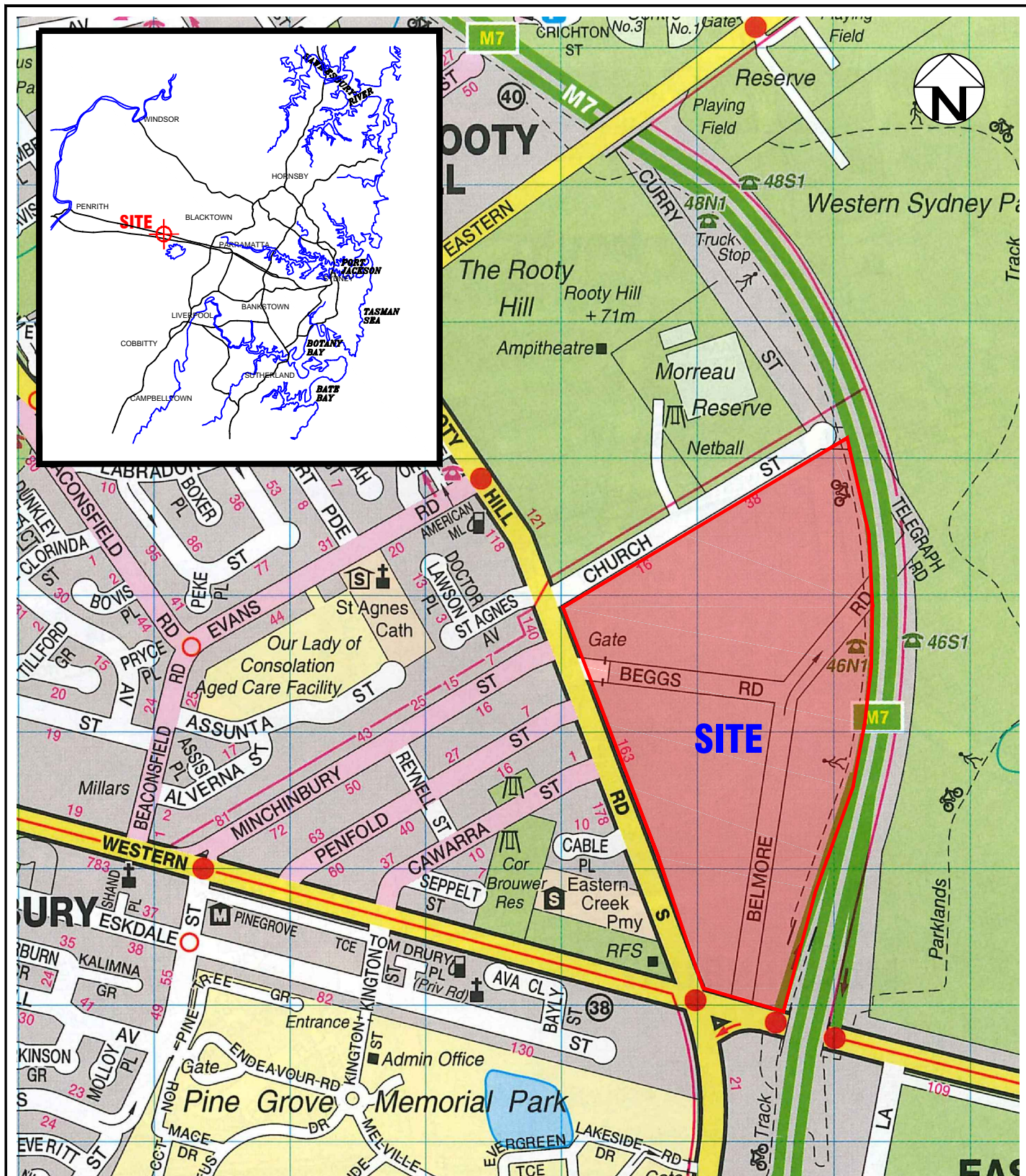
CLIENT  
**WESTERN SYDNEY PARKLANDS TRUST**

PROJECT  
 REMEDIATION ACTION PLAN  
 PHASE 1 EARLY WORKS  
 EASTERN CREEK BUSINESSHUB,  
 ROOTY HILL, NSW

TITLE  
**SUBDIVISION PLAN**

FIGURE No.  
**3**

PLOT DATE: 21/07/2015 11:44:32 AM DWG FILE: F:\ENV\PROJECTS\ENAU\HOD04683AC\DRAWINGS\COFFEY\FIGURE\ENAU\HOD04683AC-R01-D02.DWG



SOURCE: UBD STREET DIRECTORY GREGORYS SYDNEY & BLUE MOUNTAIN, NEW SOUTH WALES 48TH EDITION, 2015, MAP: 187



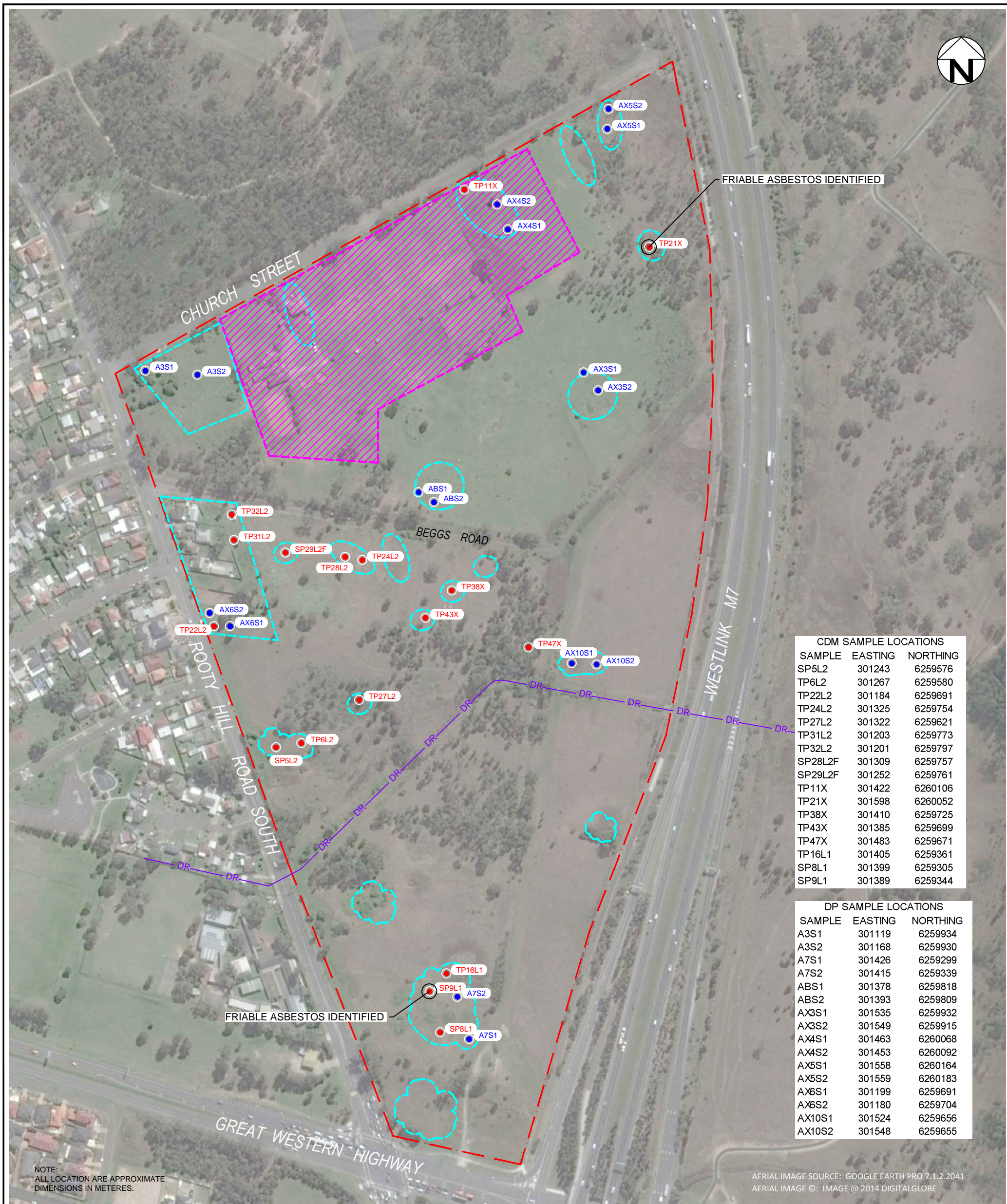
Scale (metres) 1:10 000

drawn	MV
approved	MD
date	20/07/15
scale	AS SHOWN
original size	A4



client:	WESTERN SYDNEY PARKLANDS TRUST		
project:	REVISED EARLY WORKS REMEDIATION ACTION PLAN BETWEEN M7 MOTORWAY, ROOTY HILL ROAD SOUTH AND CHURCH STREET, EASTERN CREEK, NSW		
title:	SITE LOCALITY PLAN		
project no:	ENAUHOD04683AC-R01	figure no:	FIGURE 1
		rev:	A

PLOT DATE: 23/07/2015 11:05:26 AM DWG FILE: F:\ENV\PROJECTS\ENAUHOD04683AC EASTERN CREEK BUSINESS HUB\3. DRAWINGS\COFFEY FIGURES\ENAUHOD04683AC-R01-D02.DWG



CDM SAMPLE LOCATIONS		
SAMPLE	EASTING	NORTHING
SP5L2	301243	6259576
TP6L2	301267	6259580
TP22L2	301184	6259691
TP24L2	301325	6259754
TP27L2	301322	6259621
TP31L2	301203	6259773
TP32L2	301201	6259797
SP28L2F	301309	6259757
SP29L2F	301252	6259761
TP11X	301422	6260106
TP21X	301598	6260052
TP38X	301410	6259725
TP43X	301385	6259699
TP47X	301483	6259671
TP16L1	301405	6259361
SP8L1	301399	6259305
SP9L1	301389	6259344

DP SAMPLE LOCATIONS		
SAMPLE	EASTING	NORTHING
A3S1	301119	6259934
A3S2	301168	6259930
A7S1	301426	6259299
A7S2	301415	6259339
ABS1	301378	6259818
ABS2	301393	6259809
AX3S1	301535	6259932
AX3S2	301549	6259915
AX4S1	301463	6260068
AX4S2	301453	6260092
AX5S1	301558	6260164
AX5S2	301559	6260183
AX6S1	301199	6259691
AX6S2	301180	6259704
AX10S1	301524	6259656
AX10S2	301548	6259655

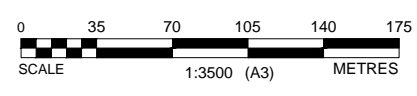
NOTE:  
ALL LOCATION ARE APPROXIMATE  
DIMENSIONS IN METERS.

AERIAL IMAGE SOURCE: GOOGLE EARTH PRO 7.1.2.2041  
AERIAL IMAGE ©: IMAGE @ 2014 DIGITALGLOBE

no.	description	drawn	approved	date
A	ORIGINAL ISSUE			

**LEGEND**

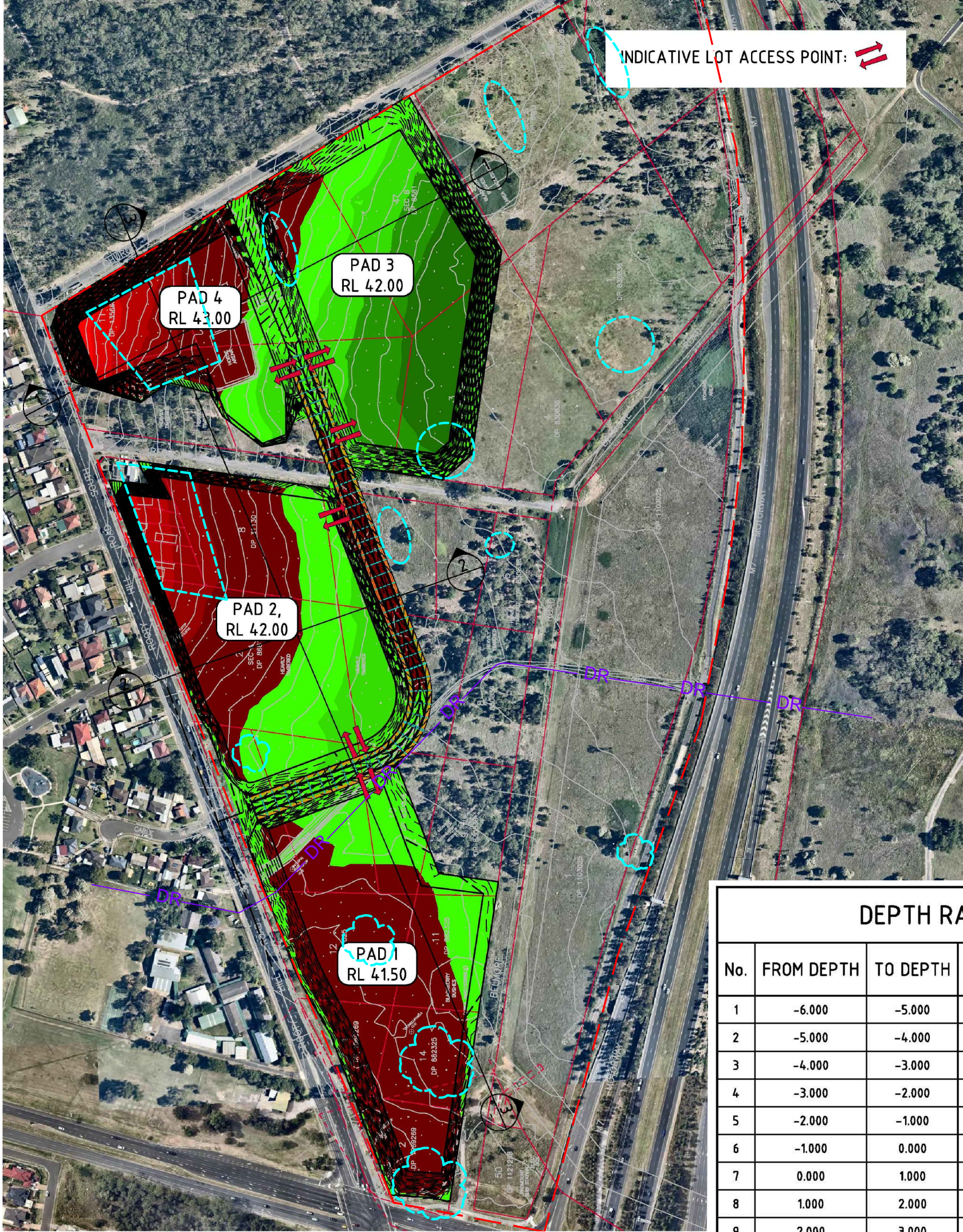
- APPROXIMATE SITE BOUNDARY
- ☁ SUSPECTED ASBESTOS IMPACT
- ▨ FORMER MARKET GARDEN
- DR — STORM DRAINAGE CHANNEL
- CDM SMITH SAMPLES
- DP SAMPLES



drawn	MV
approved	MD
date	20/07/15
scale	AS SHOWN
original size	A3



client:	WESTERN SYDNEY PARKLANDS TRUST		
project:	REVISED EARLY WORKS REMEDIATION ACTION PLAN BETWEEN M7 MOTORWAY, ROOTY HILL ROAD SOUTH AND CHURCH STREET, EASTERN CREEK, NSW		
title:	SITE LAYOUT PLAN		
project no:	ENAUHOD04683AC-R01	figure no:	FIGURE 2
rev:	A		



SOURCE: COSTINROE CONSULTING, C012693.00-SKC11, 23.01.2015.

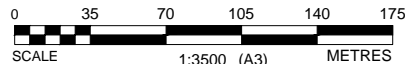
DEPTH RANGE				
No.	FROM DEPTH	TO DEPTH	COLOUR	DEPTH RANGE VOLUME
1	-6.000	-5.000	<span style="color: red;">■</span>	107m <sup>3</sup>
2	-5.000	-4.000	<span style="color: red;">■</span>	1056m <sup>3</sup>
3	-4.000	-3.000	<span style="color: red;">■</span>	3671m <sup>3</sup>
4	-3.000	-2.000	<span style="color: red;">■</span>	9196m <sup>3</sup>
5	-2.000	-1.000	<span style="color: red;">■</span>	19308m <sup>3</sup>
6	-1.000	0.000	<span style="color: red;">■</span>	49237m <sup>3</sup>
7	0.000	1.000	<span style="color: green;">■</span>	56480m <sup>3</sup>
8	1.000	2.000	<span style="color: green;">■</span>	25578m <sup>3</sup>
9	2.000	3.000	<span style="color: green;">■</span>	13661m <sup>3</sup>
10	3.000	4.000	<span style="color: green;">■</span>	2925m <sup>3</sup>

IMAGE SOURCE: HANSEN YUNCHEN, 12693.00-SKC31, 2015.

no.	description	drawn	approved	date
A	ORIGINAL ISSUE			

**LEGEND**

- APPROXIMATE SITE BOUNDARY
- SUSPECTED ASBESTOS IMPACT
- DR STORM DRAINAGE CHANNEL



drawn	MV
approved	MD
date	20/07/15
scale	AS SHOWN
original size	A3



client:	WESTERN SYDNEY PARKLANDS TRUST		
project:	REVISED EARLY WORKS REMEDIATION ACTION PLAN BETWEEN M7 MOTORWAY, ROOTY HILL ROAD SOUTH AND CHURCH STREET, EASTERN CREEK, NSW		
title:	CUT AND FILL		
project no:	ENAUHOD04683AC-R01	figure no:	FIGURE 3
rev:	A		

PLOT DATE: 21/07/2015 12:10:32 PM DWG FILE: F:\ENV\PROJECTS\ENAUHOD04683AC\ENAUHOD04683AC\DRAWINGS\COFFEY FIGURES\ENAUHOD04683AC-R01-D02.DWG