

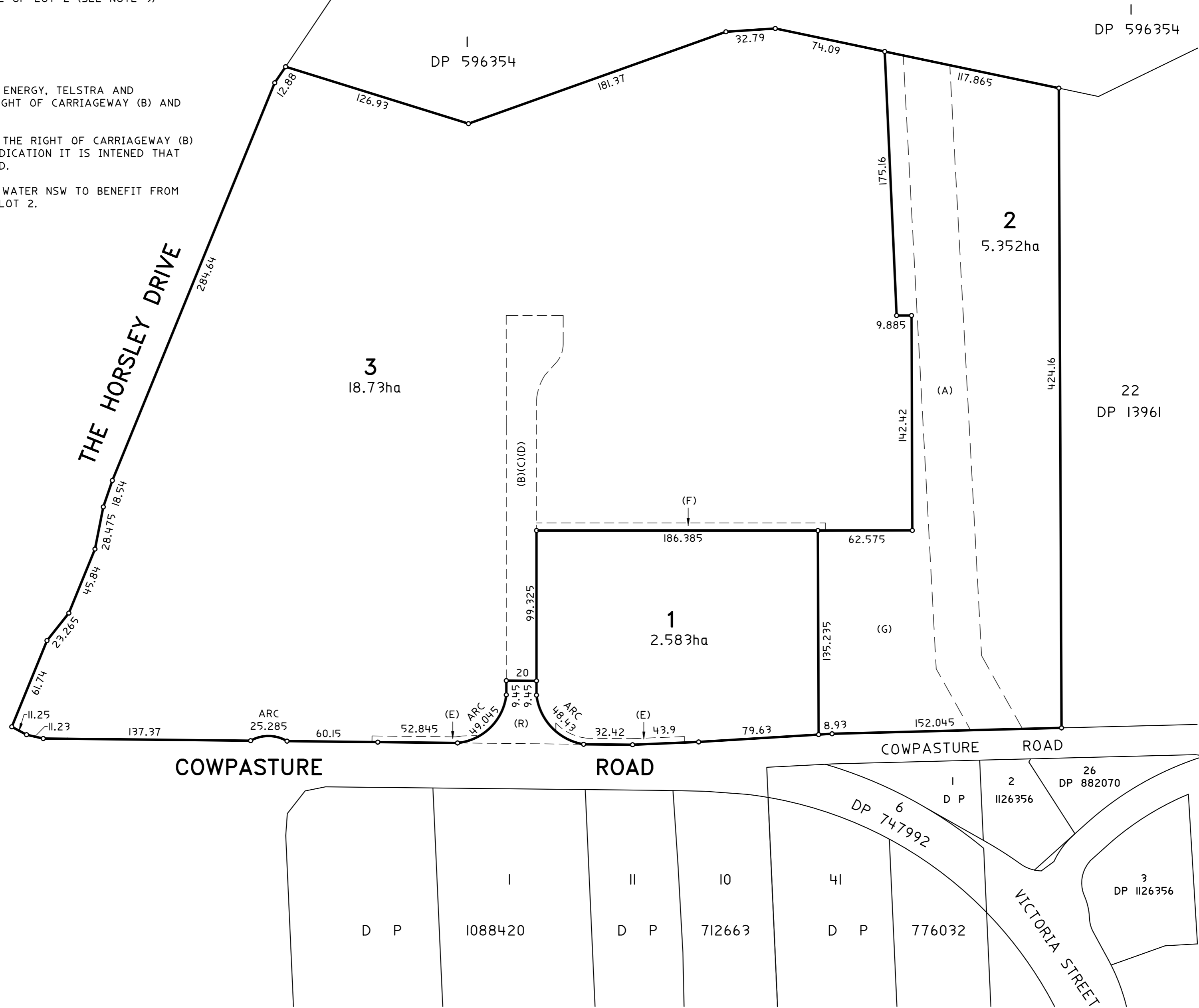
- (A) EASEMENT FOR TRANSMISSION LINE 30.48 WIDE (J453273)
- (B) RIGHT OF CARRIAGEWAY 20 WIDE AND VARIABLE WIDTH
- (C) EASEMENT FOR SERVICES 20 WIDE AND VARIABLE WIDTH
- (D) EASEMENT TO DRAIN WATER 20 WIDE AND VARIABLE WIDTH
- (E) EASEMENT FOR OVERHEAD POWER LINE 8 WIDE (ENDEAVOUR ENERGY)
- (F) EASEMENT TO DRAIN WATER 5 WIDE (BENEFITING LOT 1)
- (G) EASEMENT TO DRAIN WATER OVER WHOLE OF LOT 2 (SEE NOTE 3)

(R) ROAD WIDENING

NOTES:

1. IT IS INTENDED FOR LOT 1, ENDEAVOUR ENERGY, TELSTRA AND SYDNEY WATER TO BENEFIT FROM THE RIGHT OF CARRIAGEWAY (B) AND EASEMENT FOR SERVICES (C).
2. IT IS INTENDED TO DEDICATE AS ROAD THE RIGHT OF CARRIAGEWAY (B) TO COUNCIL AT STAGE 4. UPON THIS DEDICATION IT IS INTENDED THAT EASEMENTS (B), (C) AND (D) BE RELEASED.
3. IT IS INTENDED FOR LOT 1, LOT 3 AND WATER NSW TO BENEFIT FROM THE EASEMENT TO DRAIN WATER OVER LOT 2.

ALL DIMENSIONS AND AREAS ARE APPROXIMATE AND SUBJECT TO FINAL SURVEY AND REGISTRATION OF THE PLAN WITH LAND & PROPERTY INFORMATION (LPI)



Surveyor: SHAWN MAURICE LECLERC Date of Survey: 7-2015 Surveyor's Ref: 10067-006-(C)	PLAN OF SUBDIVISION OF LOT C IN DPI03755, LOTS 23, 24, 25, 28B, 30, 30A, 30B, 32 & 32A IN DPI3961, LOTS 1, 2, 3, 4 & 5 IN DPI098128, LOT 100 IN DP879680, LOT 10 IN DP879209 AND LOT 1 IN DPI036933	L.G.A.: FAIRFIELD Locality: WETHERILL PARK Subdivision No: Lengths are in metres. Reduction Ratio 1: 2000	Registered DRAFT - STAGE 1
--	--	--	--