

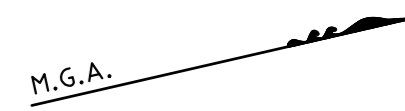
- (A) EASEMENT FOR TRANSMISSION LINE 30.48 WIDE (J453273)
- (B) RIGHT OF CARRIAGEWAY 20 WIDE AND VARIABLE WIDTH (STAGE 1)
- (C) EASEMENT FOR SERVICES 20 WIDE AND VARIABLE WIDTH (STAGE 1)
- (D) EASEMENT TO DRAIN WATER 20 WIDE AND VARIABLE WIDTH (STAGE 1)
- (F) EASEMENT TO DRAIN WATER 5 WIDE (STAGE 1)
- (K) EASEMENT TO DRAIN WATER 3 WIDE (WATER NSW)
- (L) EASEMENT TO DRAIN WATER 3 & 5 WIDE (STAGE 2)

(R) ROAD WIDENING

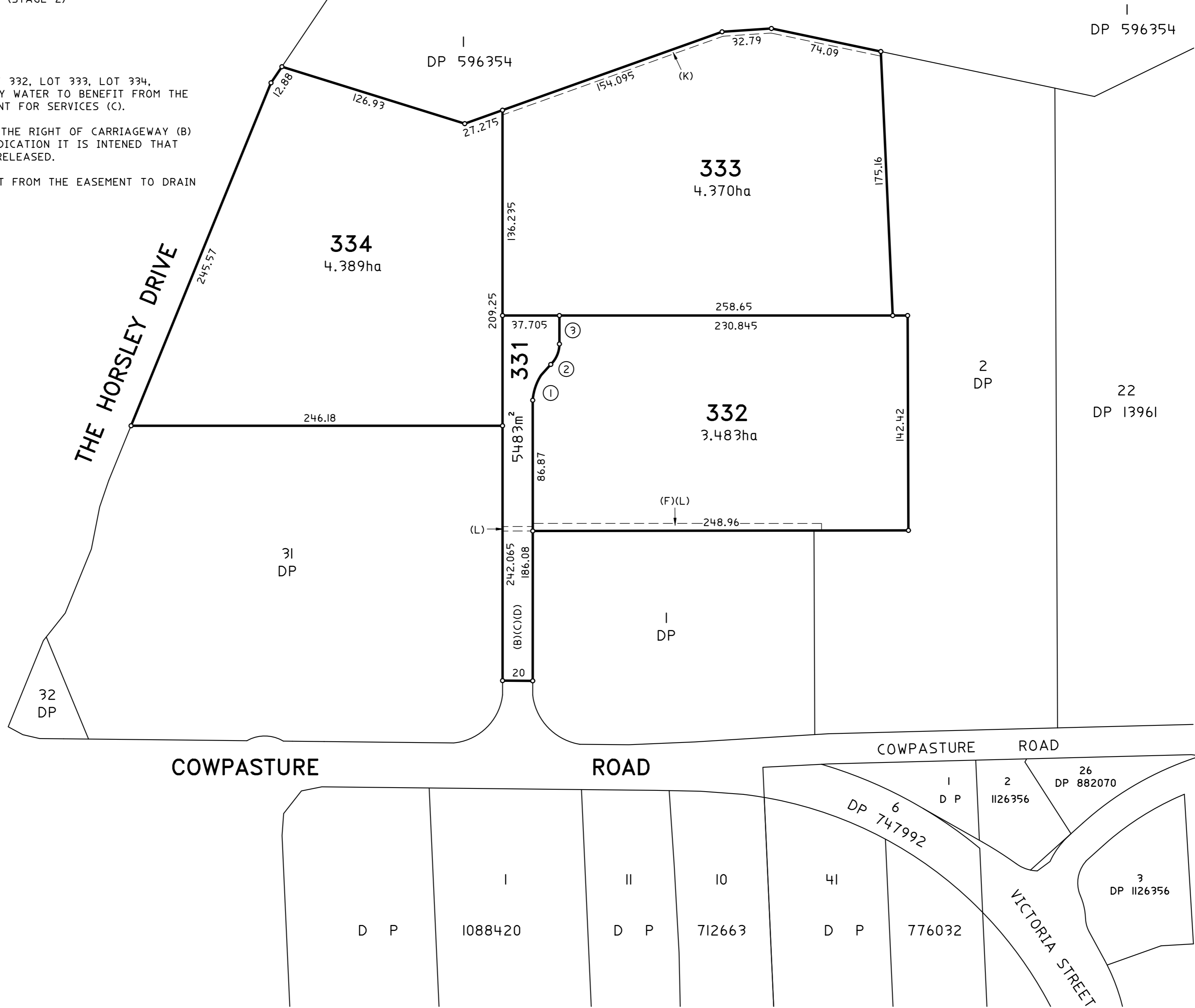
NOTES:

1. IT IS INTENDED FOR LOT 1, LOT 31, LOT 332, LOT 333, LOT 334, ENDEAVOUR ENERGY, TELSTRA AND SYDNEY WATER TO BENEFIT FROM THE RIGHT OF CARRIAGEWAY (B) AND EASEMENT FOR SERVICES (C).
2. IT IS INTENDED TO DEDICATE AS ROAD THE RIGHT OF CARRIAGEWAY (B) TO COUNCIL AT STAGE 4. UPON THIS DEDICATION IT IS INTENDED THAT EASEMENTS (B), (C), (D) & PART (L) BE RELEASED.
3. IT IS INTENDED FOR LOT 331 TO BENEFIT FROM THE EASEMENT TO DRAIN WATER DESIGNATED (F)

ALL DIMENSIONS AND AREAS ARE APPROXIMATE AND SUBJECT TO FINAL SURVEY AND REGISTRATION OF THE PLAN WITH LAND & PROPERTY INFORMATION (LPI)



SCHEDULE OF SHORT LINES & ARCS		
No.	LINE	ARC
1		27.265
2		15.125
3	18.87	



Surveyor: SHAWN MAURICE LECLERC Date of Survey: 7-2015 Surveyor's Ref: 10067-008-(C)	PLAN OF SUBDIVISION OF LOT 33 IN DP	L.G.A.: FAIRFIELD Locality: WETHERILL PARK Subdivision No: Lengths are in metres. Reduction Ratio 1: 2000	Registered DRAFT - STAGE 3
--	--	--	--