

WORKSHOP 3 DATA AND OUTCOMES

Activity 1 - Community Rooftops - Group 1

Each group was shown various precedent images and plans to highlight the aspiration for the community rooftop spaces. The conversation surrounding this content was then recorded by Yerrabingin staff members.

Verbal Comments from Community

- Lush, comfortable, green planting.
- BBQ for social gathering and cooking.
- Combination of evergreens and herbs - large volume of herbs to accommodate high number of residents.
- Project for kids to gain cultural knowledge.
- Cooking classes for community.
- Example of 'James Street Reserve Community Garden'.
- Small scale seating areas - more private as there could be tension between residents or age gaps.
- Will there be toilets available on or nearby to rooftops?
- Amenities for outdoor kitchen.
- Shade cover, water collection for irrigation.
- Water feature or water element.
- Scooter trail around the top.
- Imaginative play - logs and steppes through planting areas to give the young ones something to do while adults socialise.

- Access for disabled and elderly residents.
- Flexibility in arrangement for social gathering spaces.
- Elevators, ramps, handles, wide pathways.
- Access to tables, Elders sit at the end to overlook the rest of the family and kin.
- Sensory garden areas for Elders and disability priority - signs and rules that consider physical and mental conditions. Positive and uplifting information to improve wellbeing.



WORKSHOP 3 DATA AND OUTCOMES

Activity 1 - Community Rooftops - Group 2

Verbal Comments from Community

- People in charge of maintenance and workshops.
- Community workshops in garden - combination of sitting and standing.
- Raised planting beds for universal access.
- Greenhouse adjacent to pond (hydroponic). Capture water from the rooftop, community access to vegetables and fish, water cycles nutrients.
- Flexible furniture options: benches, stools, tables, seats, workbench for preparing food.
- Balance between built / hardstand and garden.
- Native plants to invite endemic animals, food production species.
- Think about the long term implementation.
- Young Koori youth employment opportunities.
- Compost, worm farms, organic waste.
- Mascot School - move through endemic planting communities.
- Aboriginal symbolism and designs - circle seating.
- Language and plant use.



WORKSHOP 3 DATA AND OUTCOMES

Activity 1 - Community Rooftops - Group 3

Verbal Comments from Community

- Smaller water features for kids to play.
- Flexible and adaptable gathering spaces for various scales.
- Evening photo opportunities - make sure there is lighting.
- Bush tucker and medicine species to be picked, tasted and smelled. Bush medicine is for Elders to practice.
- Shelter options for rain as well as strong sun.
- Who can access each rooftop? Does that mean each rooftop will have all amenity options? E.g. BBQ, lounges, seating etc.
- There should be a separate Elders area.
- Seating orientation should be a C shape to be flexibly arranged.
- Beanbags, projectors, pool table, table tennis.
- First Nations designs.
- NO to big, colourful pots and coloured circular tables (cafe style) - they're too commercial feeling.
- Garden should frame the rooftops.
- Species of significance, language, image, story.
- Access to everyone.
- Fire pit? Can we have this - are there safety issues?
- Solitary areas - breeze, view, sit, listen, what is the outlook? Positive space.

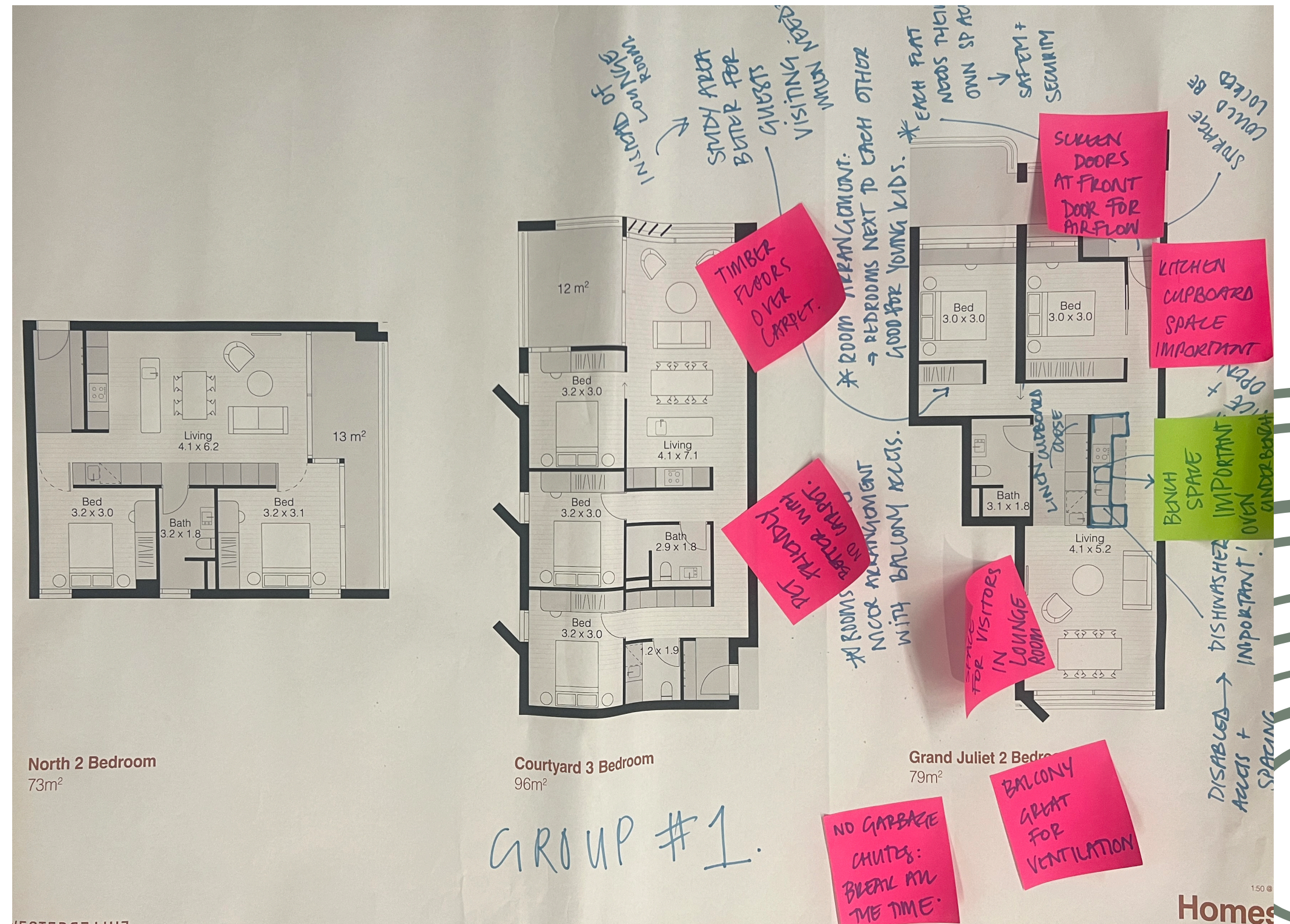
- Name gardens after people e.g. 'Aunty Beryl Garden' with their story, and 'their' species.
- Regular family events could be 10 - 20 people.
- Large family events could be 50 - 100 people.
- People will come together and share BBQ's - break bread, share stories and memories.
- Family gathering upstairs, ground floor focused on movement, not so much gathering.



WORKSHOP 3 DATA AND OUTCOMES

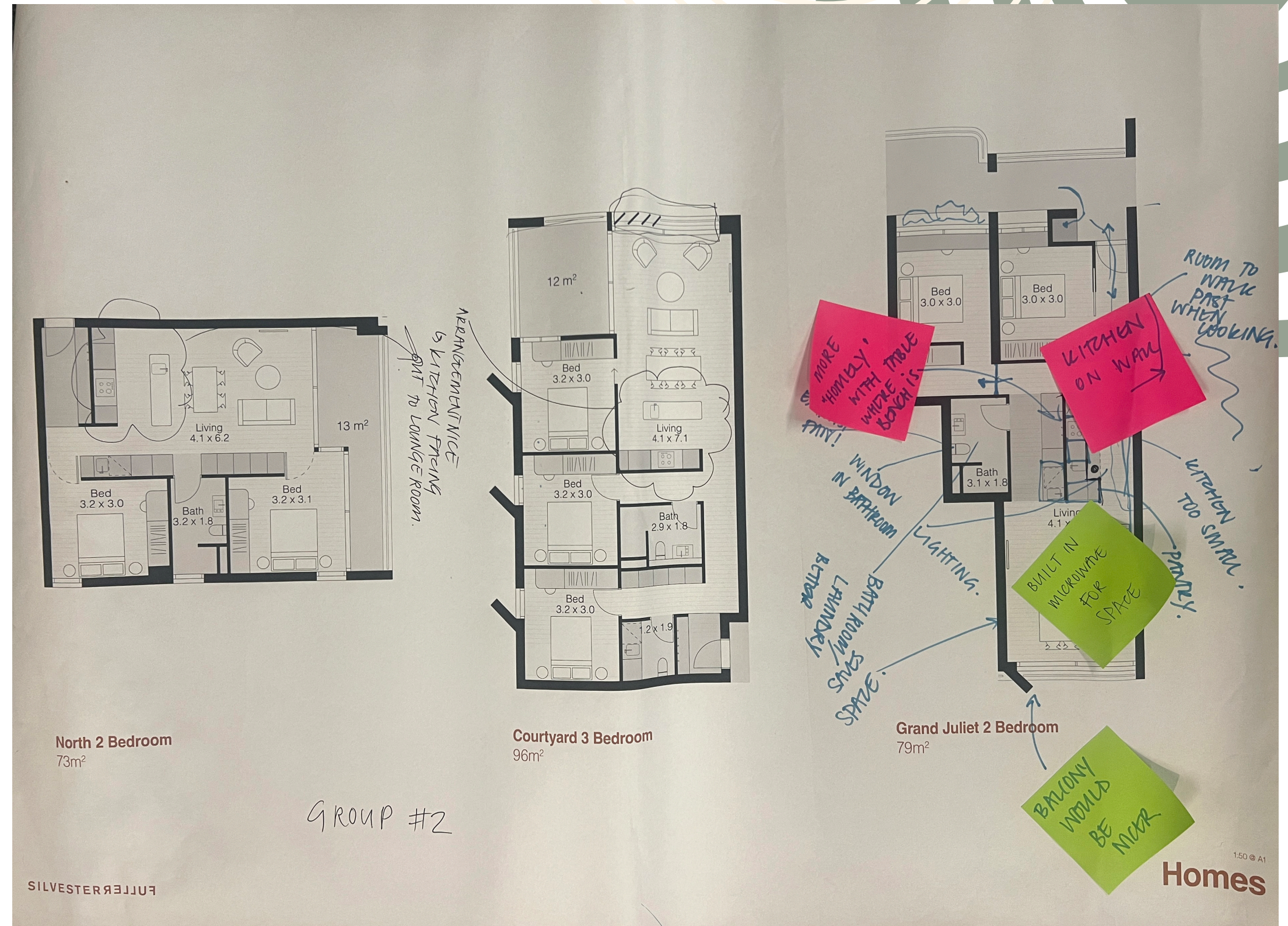
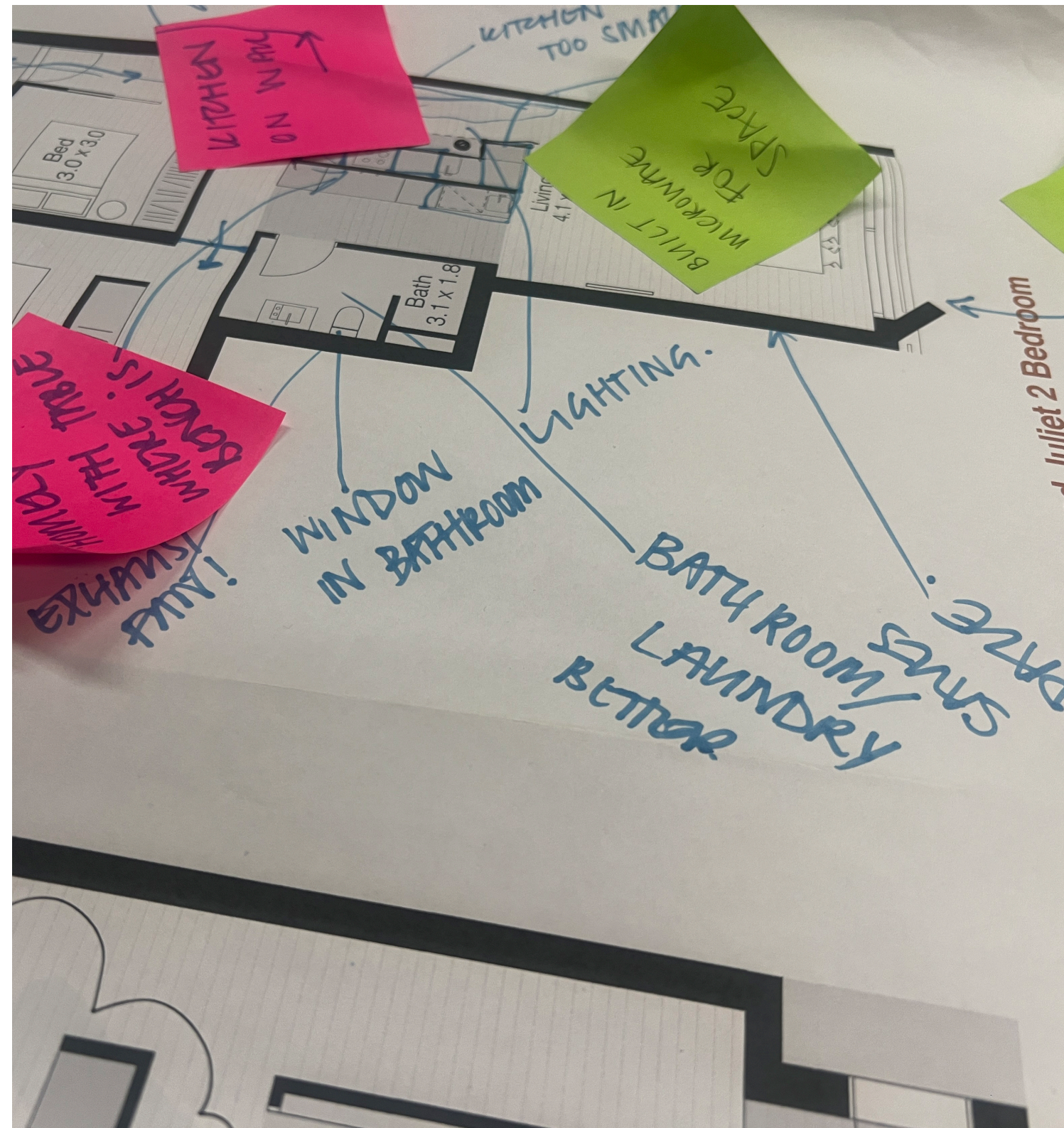
Activity 2 - Apartment Layout - Group 1

Each group was shown various plans which reflected the various apartment layout options. A typical floor plan was also taped out for community members to move through and sense spatially how an apartment would work functionally, socially and aesthetically. The conversation surrounding this content was then recorded by Yerrabingin staff members.



WORKSHOP 3 DATA AND OUTCOMES

Activity 2 - Apartment Layout - Group 2



WORKSHOP 3 DATA AND OUTCOMES

Activity 2 - Apartment Layout - Group 3



WORKSHOP 3 DATA AND OUTCOMES

Activity 3 - Breezeway - Group 1

Each group was shown various precedent images to highlight potential design options for the breezeway link. The conversation surrounding this content was then recorded by Yerrabingin staff members.

Verbal Comments from Community

- I don't like the lighter wood.
- The fully wood ones are too much.
- It doesn't feel private enough.
- I like the greenery.
- The space feels inviting.
- I don't like the metal or bars, it feels like a jail.
- I like when it's got a bit of colour – I like when the space is vibrant.
- The plywood looks unfinished – looks like we are boarded in.
- Too much wood looks like a tree house – I don't like that.
- We all like the open deck.
- Black metal and wood is nice – to break up the wood. It seems modern to have the black and wood.
- I like when the space is a bit open, but also private.
- The space is nice when you feel like a community, but also can have privacy.
- We like to have space to meet outside but have enough room to walk through.
- Things are too white – it will get dirty if we have too much white on the green spaces.
- There are ones here that are way to open – you need some privacy.
- I don't like the façade – I think it will be dangerous for the Elders to walk cause it will make their eyes go funny.
- We want a unique design – everything around here lately looks very similar.
- There's spaces that should be open but also have spaces where people can sit.
- We all like to have some storage at the front for our shoes.
- No cage doors – that's like our old houses.
- The red building – I hate that.
- Colour should come through natural light.
- Make each of the buildings more private at the front.
- It should be up to the individual house if they have it open or closed – some people are more private.



WORKSHOP 3 DATA AND OUTCOMES

Activity 3 - Breezeway - Group 2

Verbal Comments from Community

- We should have nice shutters where you can open and close them.
- If you guys put flowers in, could you please have fake at the doors. Outside is alright for the real plants.
- Greenery is lovely against the wood.
- When its hot we should be able to close them to keep it cool.
- Got to think of safety – all our kids like to climb.
- The grey, white and dull – Looks like a jail.
- I don't like the industrial style.
- Timber and black metal go together – with a little green.
- We need it modern.
- The red building – We need privacy because we don't like people to see us coming and going – close off from the street.
- We want to have the open feeling, but privacy.
- We like the walkway separating a seating area – It helps keep the kids away from the edge.
- I don't like the lighter timber.
- We hate the green paint – it's a reminder about gaol and mental health chairs.
- I like the not so dark red.
- The timber ones are the best – this way people can add their own spin to it.
- Families would love this.
- Concrete looks like a high school.
- Concrete and metal isn't homely.
- Need some sort of protection to block the heavy wind and the rain.
- Don't want it too small.
- We like plants at the front.
- I love the big open doors.
- Living rooms should be open.



WORKSHOP 3 DATA AND OUTCOMES

Activity 3 - Breezeway - Group 3

Verbal Comments from Community

- I prefer the warmer colours.
- I hate the cement – it reminds us of a gaol.
- I like the open spaces - a bit of separation with the walkways so people have their own space at the front door.
- We'd like space for storage and a door mat.
- I like the garden – but an open space to walk through and gather.
- In the centre could have a walkway of the history, the Navy used to own the spaces.
- Big spaces so that we can put art in the walkway or tell stories.
- The open corridor is nice.
- We don't like the cement, metal or the white.
- The darker and warmer colours are the best.
- We want a bit of privacy, but also feel like a community.
- The higher floors need to be safe a high level – people have kids and others suffering with mental health difficulty - we need to make sure they are safe.
- There's also a lot of Elders – you have to think about them.
- Safety is very important.
- Less is more – so you don't feel so surrounded.
- It would be good to be able to control the screening.
- Heavy glass would be good, a solid one. That way it still feels open.
- We like it to feel homely and modern.
- I like the one with the round windows (space). Could have a similar concept, but filled with Aboriginal art.
- I don't like the white – it's cold and unwelcoming.
- Outside could have seating for a meeting area.
- We need air flow too – a lot smoke.
- Some of our Elders and carers can't get out. We need air to breathe and flow through the space.
- Each house should be able to choose whether it is open or closed, some people are more private. Each one should have their own keys.
- We don't want everyone on the outside to be able to look in – people don't like outsiders to see their living space. It's alright for our own little community.
- We like the walkways to be more special.
- The dark red is way too much – eye sore.
- Need a lift for the Elders an disabled .





NEXT STEPS

ONGOING OPPORTUNITIES



Community Hub at Redfern PCYC | Redfern Grappling Club

PCYC Workshop

There is the opportunity to conduct a targeted PCYC First Nations Community Workshop to explore the opportunities Redfern Place can create through First Nations education, activities, opportunities - and ensuring an overall safe and comfortable community hub for not only the First Nations youth, adults and elders, but also the wider community for Redfern.



First Nations Educational Workshops | Malima

Resident Workshops and Gatherings

Opportunities for ongoing workshops and educational gatherings to be held at Redfern Place, inviting residents and the wider community in to learn about Country, Caring for Country and the stories across site.



Community Urban Gardens | Radiozona

Communal Garden Meals

Opportunities for group gardening days and meal planning from the gardens. Communal cooking events for the residents to use 'home grown' food and incorporate bush foods within these gardens.



Potential for markets and enterprise | OnlyMelbourne

Hosting Community Events

To build connections with the surrounding community Redfern Place will allow the opportunity to host and run community based events such as market days, stalls, education events and visiting events. Opening the doors and space to the wider community allowing residents to build and continue relationships within Redfern.



YERRABINGIN

WE ARE YERRABINGIN. WE WALK TOGETHER.



few
open
landscape
-IT
has
to
look
like
tail

① Sports
② Softing
③ Next
④ Bike
Sports
⑤ Polymat
Sports