



artefact

13 February 2020

Fei Chen  
Graduate Project Manager  
Tactical Group

Dear Fei,

**Re: Project Bell Application for Construction of Warehouses: Moorebank Precinct West Stage 2**

Artefact Heritage (Artefact) has been engaged by Tactical Group (Tactical) to prepare this letter of advice regarding Project Bell within Moorebank Precinct West (MPW).

It is understood that Project Bell consists of changes to the proposed MPW Stage 2 operational and warehouse precincts in order to accommodate a revised warehouse layout. MPW Stage 2 is a determined State Significant Development (SSD) project (SSD 7709) which comprises the second stage of development under the MPW Concept Approval (SSD 5066) and associated Modification 1.

The purpose of this letter of advice is to advise if the Aboriginal and non-Aboriginal (Historic) heritage assessments undertaken for the MPW Stage 2 (SSD 7099) Environmental Impact Statement (EIS) in accordance with the Secretary's Environmental Assessment Requirements (SEARs) are adequate to the boundary changes required for Project Bell.

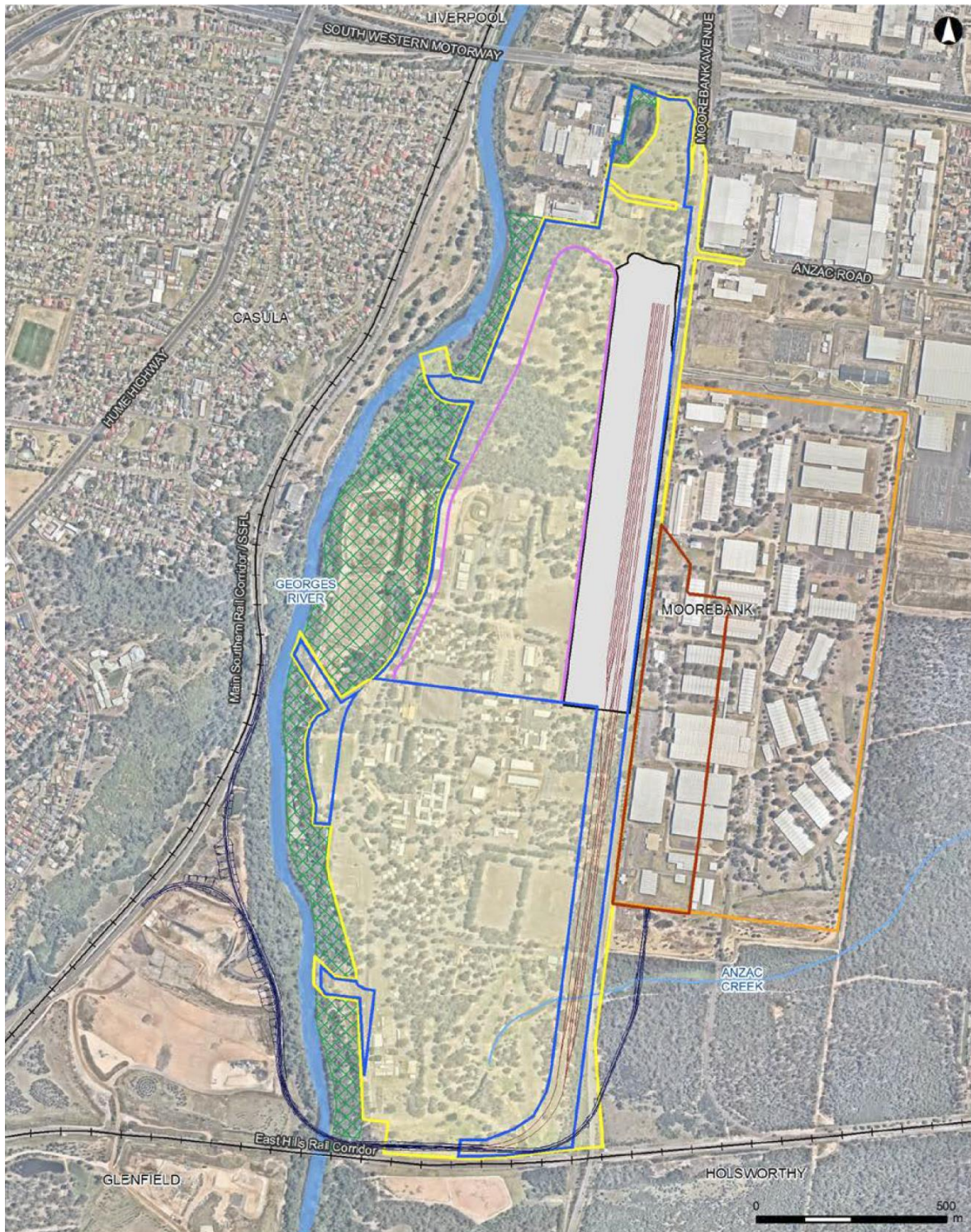
This letter should be read in conjunction with both the Aboriginal Heritage Technical Paper and Non-Aboriginal Heritage Technical Paper prepared for the MPW Stage 2 EIS.

**Project Bell Location with MPW Stage 2 Warehouse Area**

Project Bell is wholly located within the MPW Stage 2 construction area identified in the EIS. Project Bell consists of two separable warehousing portions, including a northern portion covering an area of 33,721m<sup>2</sup>, and a southern portion covering an area of 42,221m<sup>2</sup>.

The majority of the northern portion of Project Bell is located within the proposed warehousing footprint for MPW Stage 2, whilst the southern portion is located within the designated operational area. Project Bell would result in a modification of these internal boundaries, with the warehousing area moved further south into the operational area. Tactical has advised Artefact that these changes will neither extend out of the MPW Stage 2 approvals area nor will they result in any change to the MPW Stage 2 approvals area.

Figure 1: Extent of MPW Stage 2 construction area, warehousing footprint and operational area. Source: MPW Stage 2 EIS



LEGEND

MPW PROPOSAL

- Operational area
- Construction area
- Warehousing footprint
- MPW Stage 2 site
- MPW Rail link connection

OTHER PRECINCT FEATURES

- MPE Stage 1 site
- MPE site
- IMT facility area
- Conservation area
- MPE Rail link connection
- Watercourse
- Existing railway

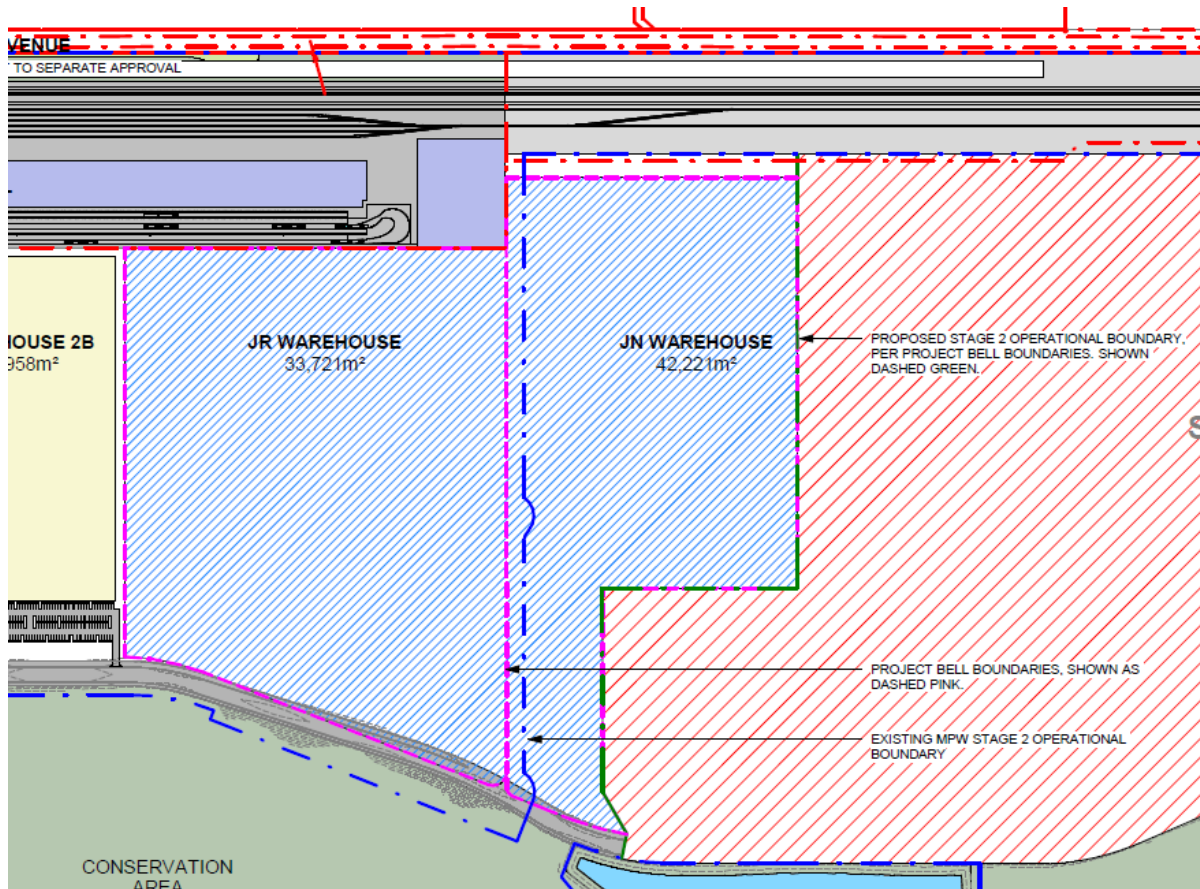
ARCADIS AUSTRALIA PACIFIC PTY LTD  
 ABN 75 104 485 289  
 Level 5, 111 Walker St | North Sydney NSW 2060  
 P: +61 (0) 2 8507 9000 | F: +61 (0) 2 8507 5001

Scale: 1:15,000 @ A4





**Figure 2: Location of Project Bell within MPW Stage 2 and associated changes to the warehousing area and operational footprint**



### MPW Stage 2 Aboriginal Heritage Technical Paper

The impact assessment delineated which Aboriginal sites and areas of archaeological potential within MPW would be subject to separate impacts from MPW Stage 1 Early Works (SSD 5066). The recommendations in the MPW Stage 2 EIS Aboriginal Heritage Technical Paper and associated Conditions of Approval for SSD 7709 are based on the identified impacts from MPW Stage 2 only.

The impact assessment in the Aboriginal Heritage Technical Paper for the MPW Stage 2 EIS was based on the construction area, which includes the entire Project Bell footprint. The impact assessment did not differentiate between the separate warehousing footprint and operational area.

Therefore, modification of the warehousing footprint and operational area for Project Bell will not result in an inconsistency with the MPW Stage 2 Aboriginal Heritage Technical Paper impact assessment and recommendations.

#### 1.1.1 MPW Stage 2 Non-Aboriginal (Historic) Heritage Technical Paper

The impact assessment excluded those heritage items subject to impact from MPW Stage 1 Early Works (SSD 5066). The recommendations in the MPW Stage 2 EIS non-Aboriginal (Historic) Heritage Technical Paper and associated Conditions of Approval for SSD 7709 are based on the identified impacts from MPW Stage 2 only.

The impact assessment in the non-Aboriginal (Historic) Heritage Technical Paper for the MPW Stage 2 EIS was based on the construction area, which includes the entire Project Bell footprint. The

impact assessment did not differentiate between the separate warehousing footprint and operational area.

Therefore, modification of the warehousing footprint and operational area for Project Bell will not result in an inconsistency with the MPW Stage 2 non-Aboriginal (Historic) Heritage Technical Paper impact assessment and recommendations.

### Conclusion

Given the Project Bell footprint is situated within the assessment areas located within SSD 7709 and SSD 5066 and its associated MOD (MPW Concept Plan – Modification 1 SSD-5066-MOD1), the proposed boundary adjustment of the warehousing footprint southwards into the construction area of MPW Stage 2 to accommodate Project Bell will not result in an inconsistency with the impact assessment and associated recommendations of the Aboriginal Heritage Technical Paper and non-Aboriginal (Historic) Heritage Technical Paper prepared for the EIS.