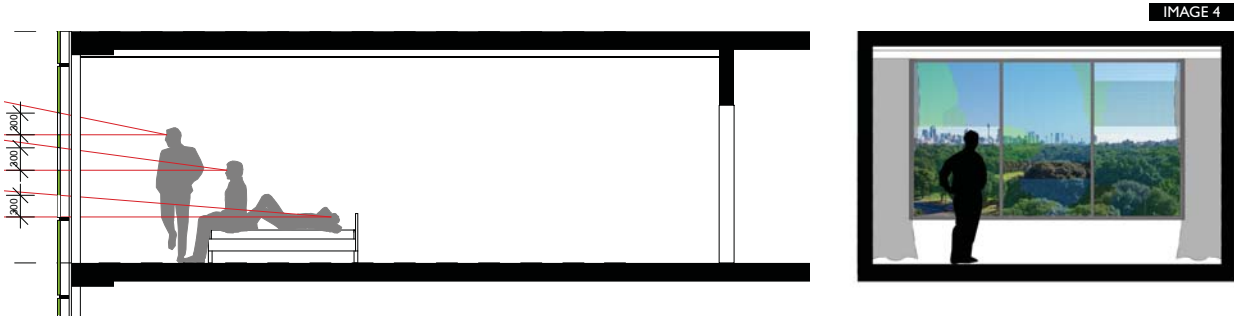
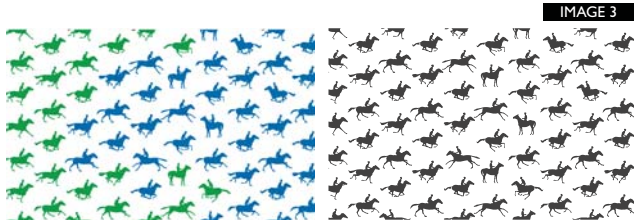
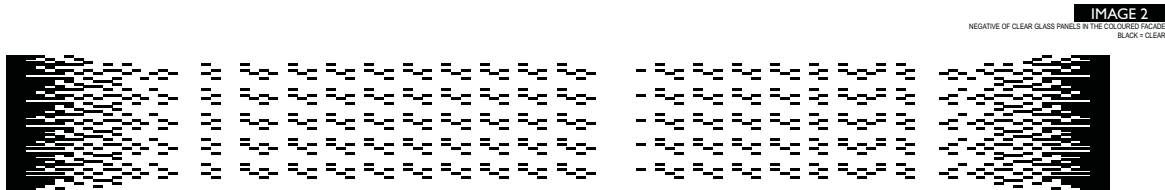
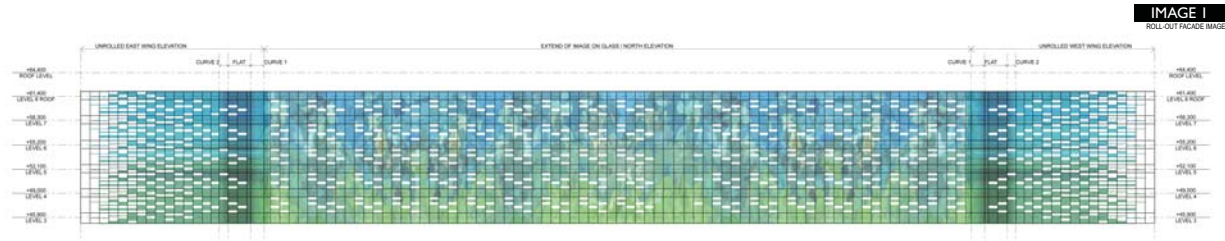


ATC DESIGN REPORT 7/9

Facade Motif

Design Modification
The bedroom wing facade motif has been reworked (image 1/2), restricting its extent to only the facade that fronts Alison Road. The reshaped end wings transition in colour from deep blue/green to clear, revealing the strong expressive structure of the trackside balconies (image 1/2).

Design Comment
The facade motif represents the hotels context, located between the Royal Randwick Racecourse and the Centennial Parklands. The blue green colour of the facade blends with the parkland setting, while the horse motif evokes the equine tradition of Royal Randwick. The large-scale coloured panels to the facade are made up of coloured pixels in the shape of horses (image 3), visible from the hotel rooms (image 4).



DATE	REV	NOTES	NOTES:	STRUCTURAL & CIVIL ENGINEER	ELECTRICAL, MECHANICAL & HYDRAULIC ENGINEER	FACADE CONSULTANT	PCA	CLIENT:	PROJECT :	ARCHITECT	DRAWING TITLE	DRAWN BY
01.08.13	A	SUBMITTED WITH PREFERRED PROJECT REPORT	Do not scale off drawings. Use figured dimensions only. Report any discrepancies to the architect. These designs, plans, specifications and the copyright therein are the property of Tonkin Zulaikha Greer Architects Pty Ltd, and must not be reproduced or copied wholly or in part without written permission of Tonkin Zulaikha Greer Architects Pty Ltd.	BROWN CONSULTING T (02) 9004 8855	WSP T (02) 8907 0900	AECOM T (02) 8934 0564	CITY PLAN SERVICES T (02) 9270 3500	AUSTRALIAN TURF CLUB LTD T (02) 9663 8400	ROYAL RANDWICK RACECOURSE HOTEL PROJECT ADDRESS Royal Randwick Racecourse Alison Road, Randwick, NSW 2031 PROJECT NO : 10025	TONKIN ZULAIKHA GREER ARCHITECTS 117 Reservoir Street Sunny Hills, NSW 2010 ABN: 46002722349 P: (02) 9215 4900 F: (02) 9215 4901 EMAIL: jim@tazg.com.au	DESIGN REPORT 7	RM
				QUANTITY SURVEYOR SLATTERY AUSTRALIA PTY LTD T (02) 9423 8850	TRAFFIC ENGINEER PARKING CONSULTANTS INTERNATIONAL T (02) 9968 1844	FIRE ENGINEER RAW FIRE T (02) 9299 6605	TOWN PLANNER URBIS T (02) 8223 9900				SCALES NTS	CHECKED TG
											PHASE PA	DATE AUGUST 2013
											DRAWING NO A-0017	REVISION A

ATC DESIGN REPORT 8/9

Bedroom Wing Soffit, Columns and Stairs

Design Modification
The Bedroom Wing Soffit, Columns and Stairs have been remodelled as a more sculptural element between the bedroom wing and the ground plane(image 1,2).
A uniquely shaped glossy object containing a fire escape and viewing platform has been 'suspended' in this space, binding together the set of white concrete columns (image 3,4,5).

The bedroom wing soffit is reflective, enriching the structures and objects that occupy the space between the wing and ground plane. In addition, the landscape, people and passing lights will be reflected in the soffit from certain angles.

The stair has been remodelled: the service duct deleted and the structural shear wall turned into a concrete truss, which makes the form more penetrable, permitting a view through it.

Design Comment
There was much discussion about whether the porte cochere at the western end facilitated a vista across the site from the Centennial Parklands and Darley Road, or whether it was more appropriate to terminate the vista with an artistically shaped object.

It was agreed that we should explore the possibilities of something visually interesting in the form of a 'field of columns'. However, once a study was made, space for the 'field of columns' was compromised by the driveway at the western end, and at the eastern end they ruined the amenity of the public space.

The 'shaped glossy' object as the termination of the vista was developed as an alternative to the 'field of columns' concept.



IMAGE 1



IMAGE 2

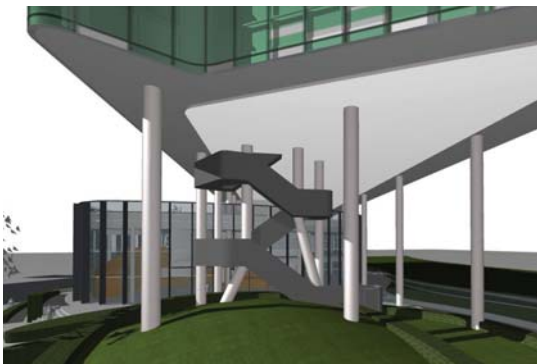


IMAGE 3

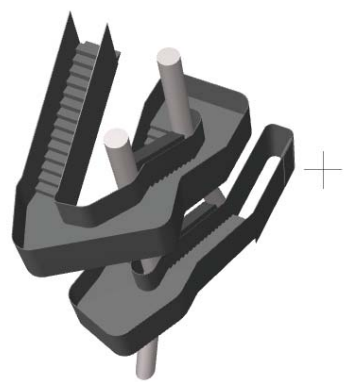


IMAGE 4

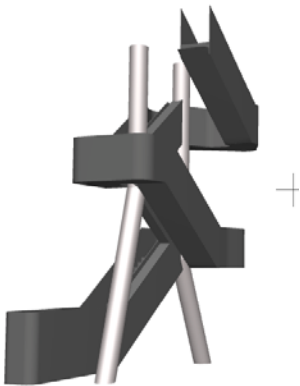


IMAGE 5

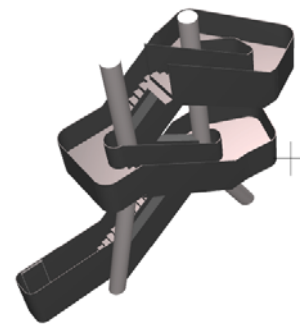


IMAGE 6

DATE	REV	NOTES	NOTES:	STRUCTURAL & CIVIL ENGINEER	ELECTRICAL, MECHANICAL & HYDRAULIC ENGINEER	FACADE CONSULTANT	PCA	CLIENT:	PROJECT:	ARCHITECT	DRAWING TITLE	DRAWN BY
01.08.13	A	SUBMITTED WITH PREFERRED PROJECT REPORT	Do not scale off drawings. Use figured dimensions only. Report any discrepancies to the architect. These designs, plans, specifications and the copyright therein are the property of Tonkin Zulaikha Greer Architects Pty Ltd, and must not be reproduced or copied wholly or in part without written permission of Tonkin Zulaikha Greer Architects Pty Ltd.	BROWN CONSULTING T (02) 9004 8855	WSP T (02) 8907 0900	AECOM T (02) 8934 0564	CITY PLAN SERVICES T (02) 8270 3500	AUSTRALIAN TURF CLUB LTD T (02) 9683 8400	ROYAL RANDWICK RACECOURSE HOTEL PROJECT ADDRESS Royal Randwick Racecourse Alison Road, Randwick, NSW 2031 PROJECT NO : 10025	TONKIN ZULAIKHA GREER ARCHITECTS 117 Reservoir Street Surry Hills, NSW 2010 ABN: 4600272249 P: (02) 9215 4900 F: (02) 9215 4901 EMAIL: jrm@rzg.com.au	DESIGN REPORT 8	RM
				QUANTITY SURVEYOR SLATTERY AUSTRALIA PTY LTD T (02) 9423 8850	TRAFFIC ENGINEER PARKING CONSULTANTS INTERNATIONAL T (02) 9968 1844	FIRE ENGINEER RAW FIRE T (02) 9299 6605	TOWN PLANNER URBIS T (02) 8223 9900				SCALES NTS	CHECKED TG
											DATE AUGUST 2013	REVISION A
											PHASE PA	DRAWING NO A-0018

ATC DESIGN REPORT 9/9

Signage

Design Modification

The "Royal Randwick" and "Aedina" signage located above the parapet has been deleted.

The "Aedina" sign has been relocated to the facade facing Alison Road and the "Royal Randwick" sign has been located at the edge of Alison Road as contemporary 'partner' for the heritage turnstile wall and gateway at the eastern end of the Hotel. Just as the the heritage wall originally announced Royal Randwick with its unique structure, the "Royal Randwick" sign announces the race course in contemporary fashion. Both 'signs' are the same size and the new sign and will be made of weathering steel to approximate the colour of the original brickwork.

Design Comment

The "Royal Randwick" sign also announces the spectator precinct.

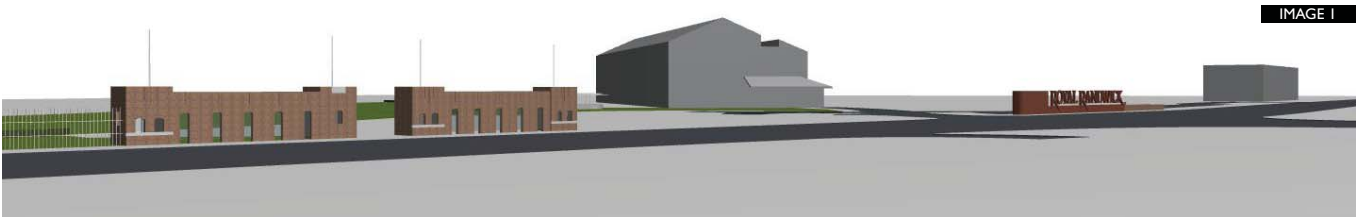
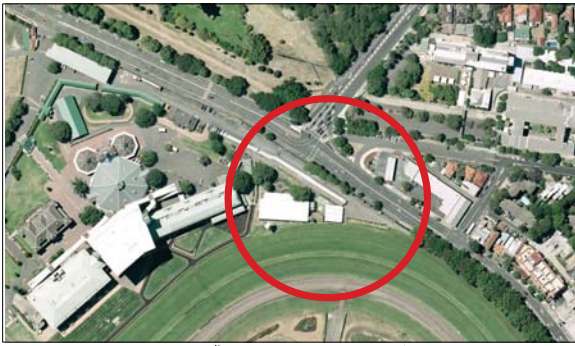


IMAGE 1

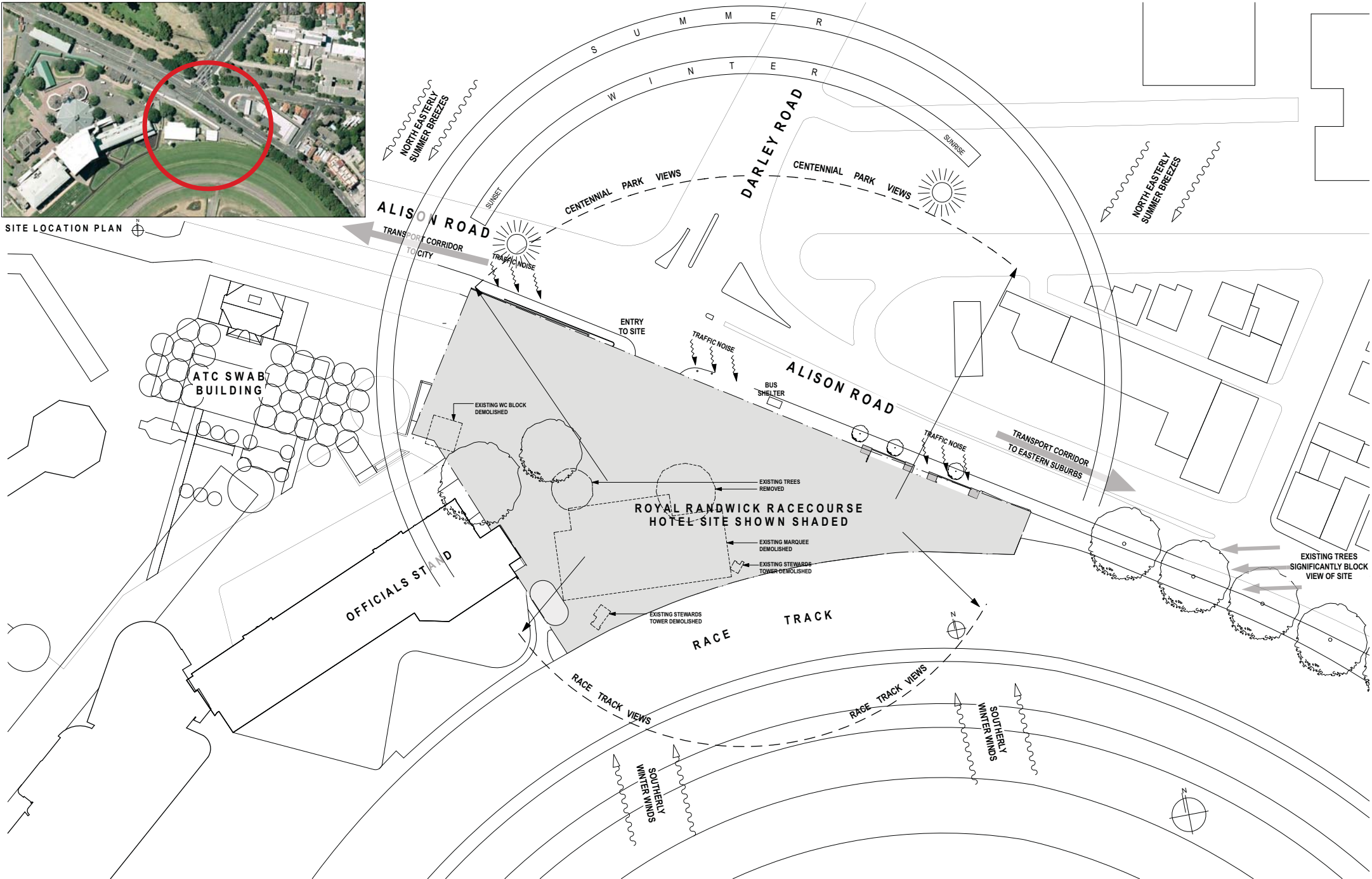


IMAGE 2

DATE	REV	NOTES	NOTES:	STRUCTURAL & CIVIL ENGINEER	ELECTRICAL, MECHANICAL & HYDRAULIC ENGINEER	FACADE CONSULTANT	PCA	CLIENT:	PROJECT :	ARCHITECT	DRAWING TITLE	DRAWN BY
01.08.13	A	SUBMITTED WITH PREFERRED PROJECT REPORT	Do not scale off drawings. Use figured dimensions only. Report any discrepancies to the architect. These designs, plans, specifications and the copyright therein are the property of Tonkin Zulaikha Greer Architects Pty Ltd, and must not be reproduced or copied wholly or in part without written permission of Tonkin Zulaikha Greer Architects Pty Ltd.	BROWN CONSULTING T (02) 9004 8855	WSP T (02) 8907 0900	AECOM T (02) 8934 0564	CITY PLAN SERVICES T (02) 9270 3500	AUSTRALIAN TURF CLUB LTD T (02) 9683 8400	ROYAL RANDWICK RACECOURSE HOTEL	TONKIN ZULAIKHA GREER ARCHITECTS 117 Reservoir Street Surry Hills, NSW 2010 ABN: 46002722349 P: (02) 9215 4900 F: (02) 9215 4901 EMAIL: jgm@rzg.com.au	DESIGN REPORT 9	RM
				QUANTITY SURVEYOR SLATTERY AUSTRALIA PTY LTD T (02) 9423 8850	TRAFFIC ENGINEER PARKING CONSULTANTS INTERNATIONAL T (02) 9968 1844	FIRE ENGINEER RAW FIRE T (02) 9299 6605	TOWN PLANNER URBIS T (02) 8223 9900			TONKIN ZULAIKHA GREER ARCHITECTS 117 Reservoir Street Surry Hills, NSW 2010 ABN: 46002722349 P: (02) 9215 4900 F: (02) 9215 4901 EMAIL: jgm@rzg.com.au		TG
								PROJECT ADDRESS Royal Randwick Racecourse Alison Road, Randwick, NSW 2031 PROJECT NO : 10025		SCALES NTS		DATE AUGUST 2013
								PHASE PA		DRAWING NO A-0019		REVISION A

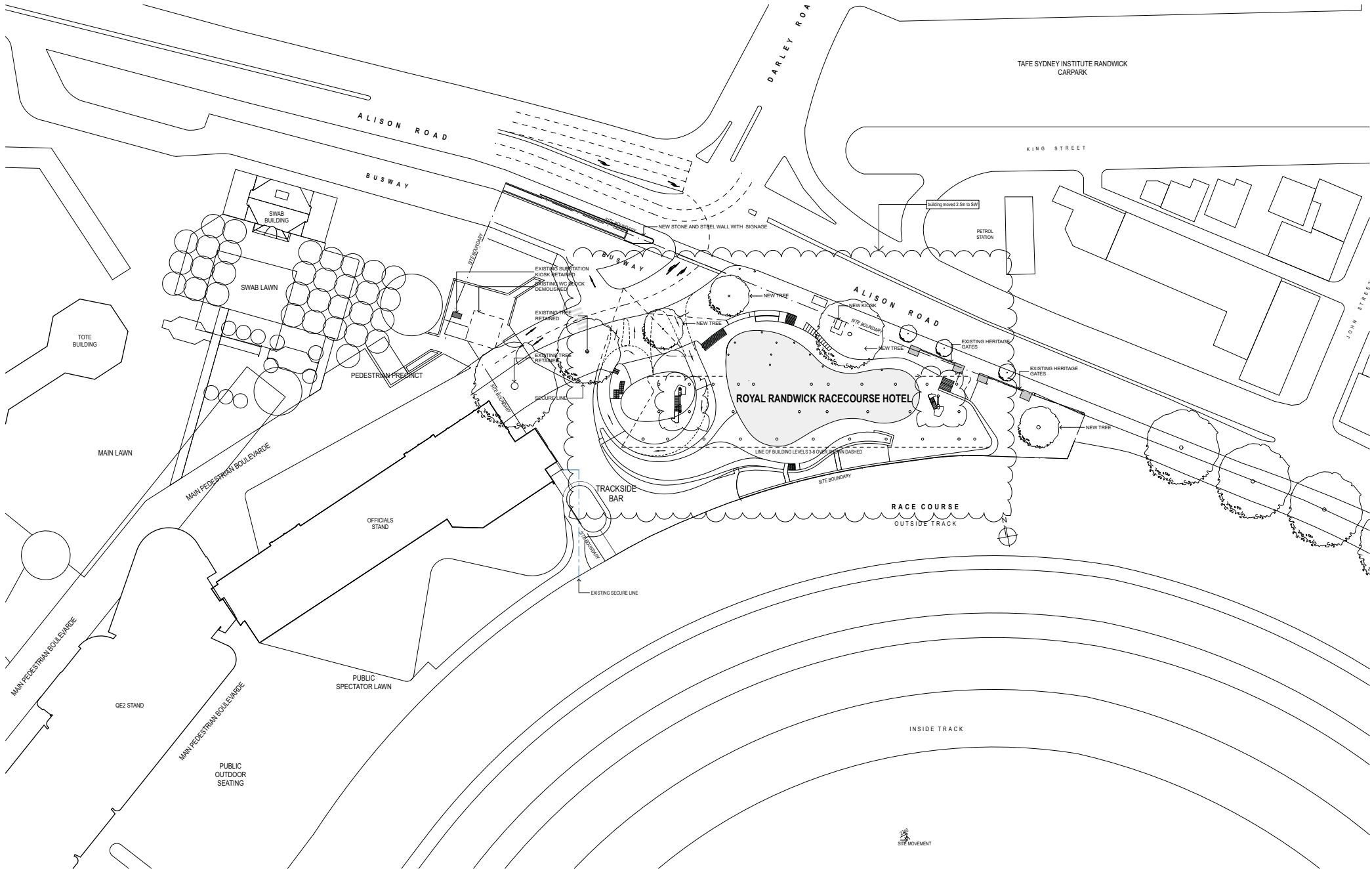


SITE LOCATION PLAN



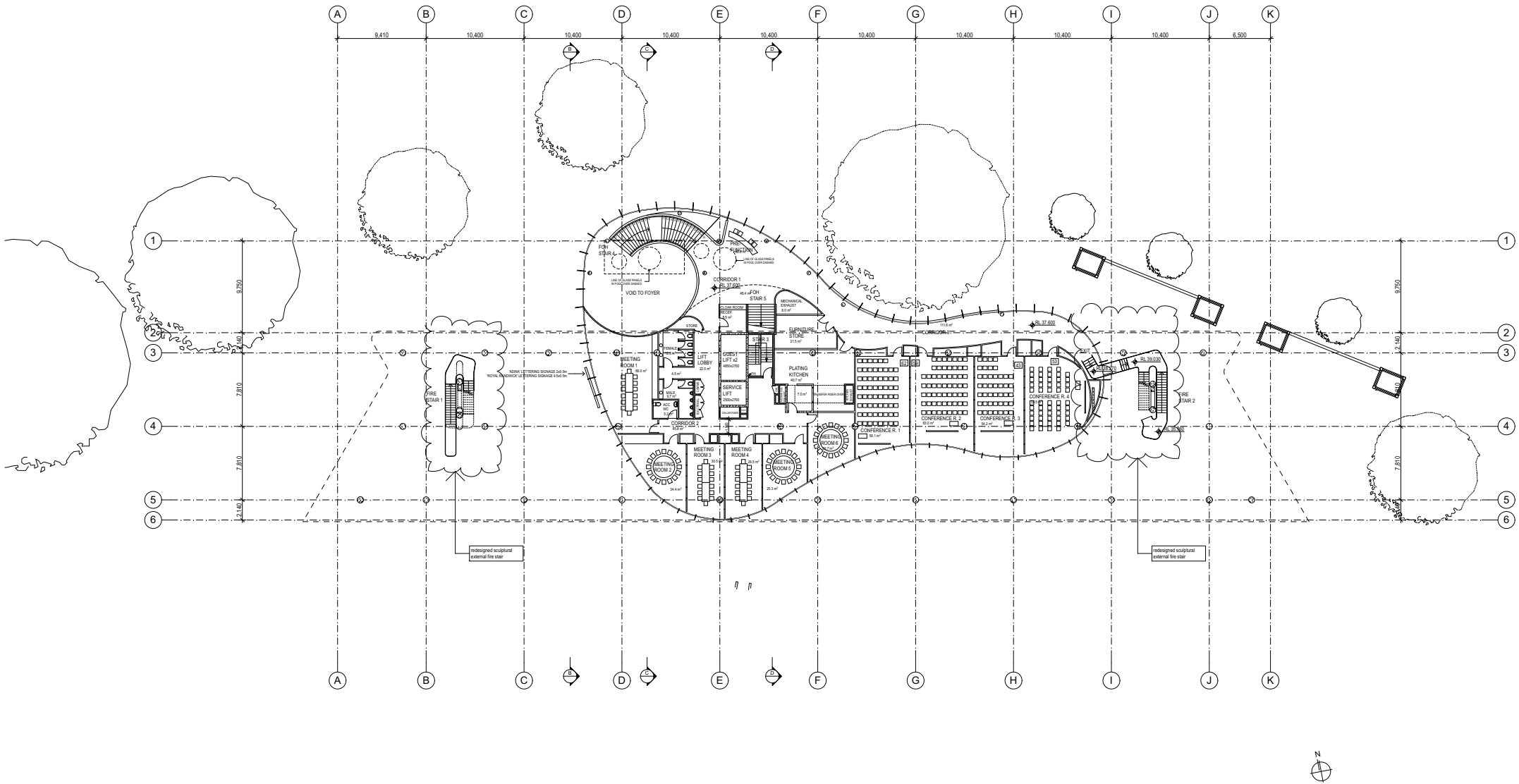
DATE	REV	NOTES	NOTES:	STRUCTURAL & CIVIL ENGINEER	ELECTRICAL, MECHANICAL & HYDRAULIC ENGINEER	FACADE CONSULTANT	PCA	CLIENT:	PROJECT:	ARCHITECT	DRAWING TITLE	DRAWN BY
22.05.12	A	PLANNING APPLICATION ISSUE	Do not scale off drawings. Use figured dimensions only. Report any discrepancies to the architect. These designs, plans, specifications and the copyright therein are the property of Tonkin Zulaikha Greer Architects Pty Ltd, and must not be reproduced or copied wholly or in part without written permission of Tonkin Zulaikha Greer Architects Pty Ltd.	BROWN CONSULTING T (02) 9004 8855	WSP T (02) 8907 0900	AECOM T (02) 8934 0564	CITY PLAN SERVICES T (02) 9270 3500	AUSTRALIAN TURF CLUB LTD T (02) 9663 8400	ROYAL RANDWICK RACECOURSE HOTEL PROJECT ADDRESS Royal Randwick Racecourse Alison Road, Randwick, NSW 2031 PROJECT NO : 10025	TONKIN ZULAIKHA GREER ARCHITECTS 117 Reservoir Street Sunny Hills, NSW 2010 ABN: 46002722349 P: (02) 9215 4900 F: (02) 9215 4901 EMAIL: jrm@tazg.com.au	SITE LOCATION PLAN & ANALYSIS	JB, RM
01.08.13	B	SUBMITTED WITH PREFERRED PROJECT REPORT		QUANTITY SURVEYOR SLATTERY AUSTRALIA PTY LTD T (02) 9423 8850	TRAFFIC ENGINEER PARKING CONSULTANTS INTERNATIONAL T (02) 9299 1844	FIRE ENGINEER RAW FIRE T (02) 9299 6605	TOWN PLANNER URBIS T (02) 8223 9900				SCALES 1:500/A1 1:1000/A3	CHECKED TG
											PHASE PA	REVISION B

(previously A-0050)

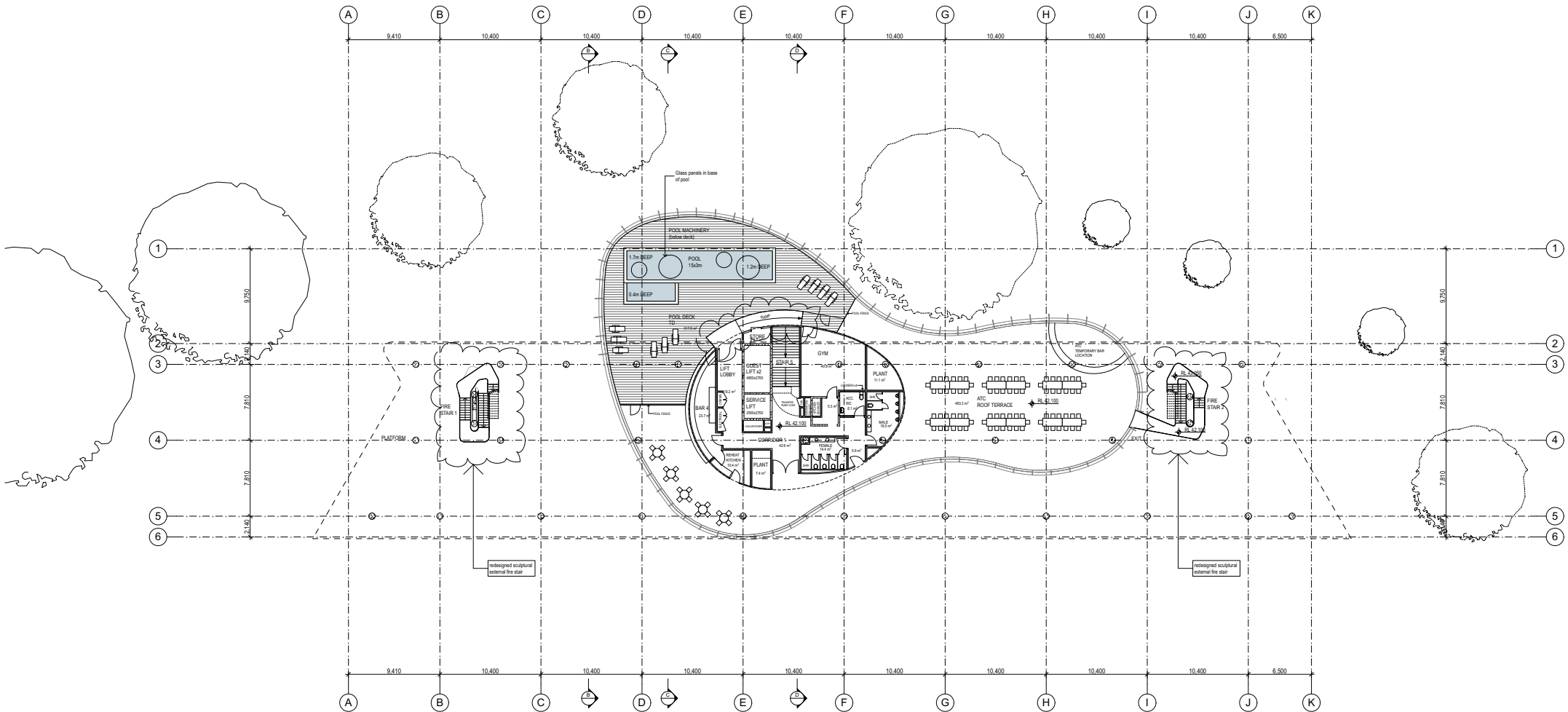


DATE	REV	NOTES	NOTES:	STRUCTURAL & CIVIL ENGINEER	ELECTRICAL, MECHANICAL & HYDRAULIC ENGINEER	FAÇADE CONSULTANT	PCA	CLIENT:	PROJECT :	ARCHITECT	DRAWING TITLE	DRAWN BY
22.05.12	A	PLANNING APPLICATION ISSUE	Do not scale off drawings. Use figured dimensions only. Report any discrepancies to the architect. These designs, plans, specifications and the copyright therein are the property of Tonkin Zulaikha Greer Architects Pty Ltd, and must not be reproduced or copied wholly or in part without written permission of Tonkin Zulaikha Greer Architects Pty Ltd.	BROWN CONSULTING T (02) 9004 8855	WSP T (02) 8907 0900	AECOM T (02) 8934 0564	CITY PLAN SERVICES T (02) 9270 3500	AUSTRALIAN TURF CLUB LTD T (02) 9663 8400	ROYAL RANDWICK RACECOURSE HOTEL	117 Reservoir Street Surry Hills, NSW 2010 ABN: 46002722349 P: (02) 9215 4900 F: (02) 9215 4901 EMAIL: jgm@tazg.com.au	SITE PLAN	JB, RM
01.08.13	B	SUBMITTED WITH PREFERRED PROJECT REPORT		QUANTITY SURVEYOR SLATTERY AUSTRALIA PTY LTD T (02) 9423 8850	TRAFFIC ENGINEER PARKING CONSULTANTS INTERNATIONAL T (02) 9968 1844	FIRE ENGINEER RAW FIRE T (02) 9299 6605	TOWN PLANNER URBIS T (02) 8223 9900		PROJECT ADDRESS Royal Randwick Racecourse Alison Road, Randwick, NSW 2031 PROJECT NO : 10025	TONKIN ZULAIKHA GREER ARCHITECTS 117 Reservoir Street Surry Hills, NSW 2010 ABN: 46002722349 P: (02) 9215 4900 F: (02) 9215 4901 EMAIL: jgm@tazg.com.au	SCALES 1:500/A1 1:1000/A3	CHECKED TG
											PHASE PA	REVISION B

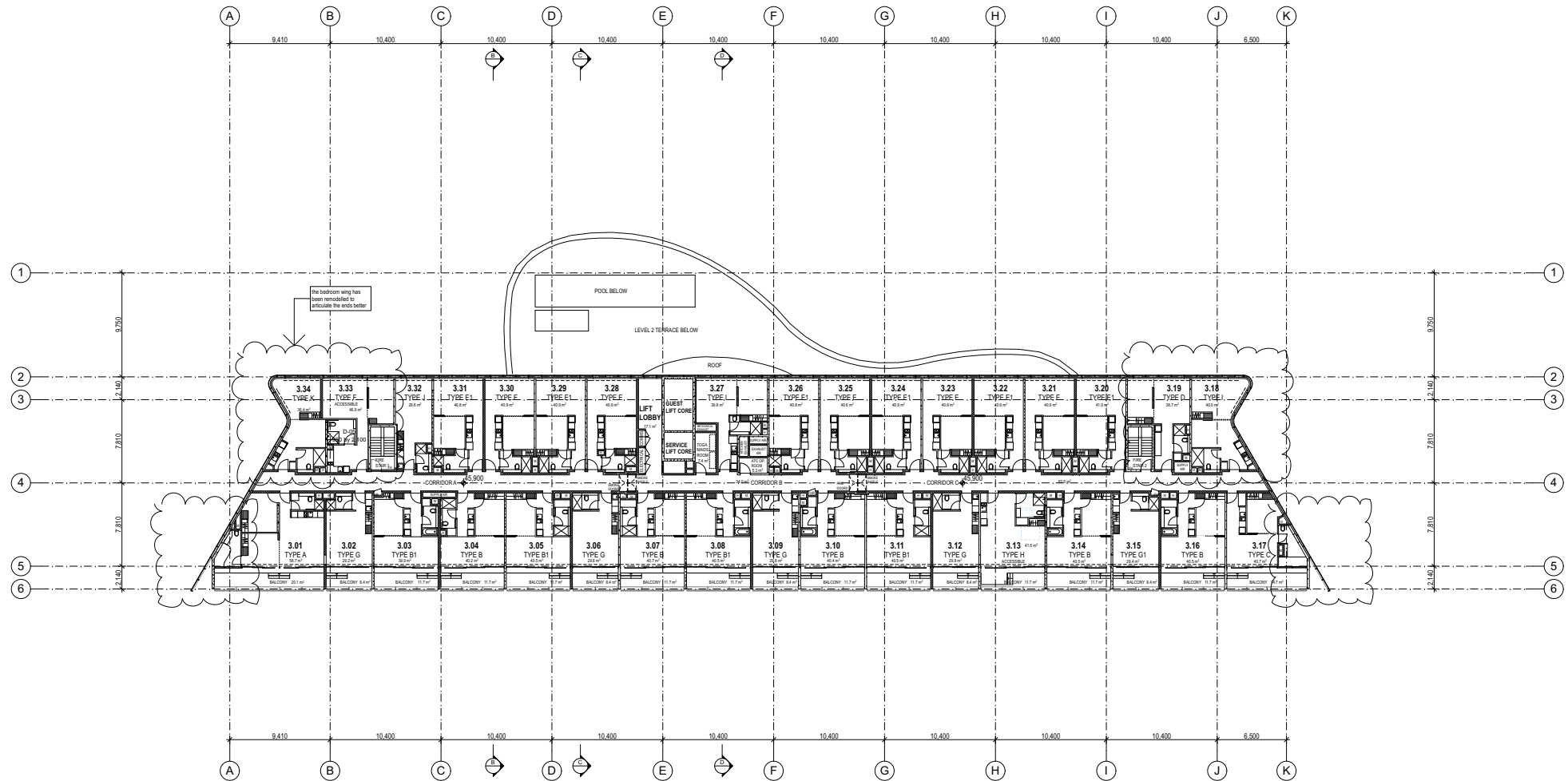
(previously A-005)



DATE	REV	NOTES	NOTES:	STRUCTURAL & CIVIL ENGINEER	ELECTRICAL, MECHANICAL & HYDRAULIC ENGINEER	FACADE CONSULTANT	PCA	CLIENT:	PROJECT :	ARCHITECT	DRAWING TITLE	DRAWN BY
22.05.12	A	PLANNING APPLICATION ISSUE	Do not scale off drawings. Use figured dimensions only. Report any discrepancies to the architect. These designs, plans, specifications and the copyright therein are the property of Tonkin Zulaikha Greer Architects Pty Ltd, and must not be reproduced or copied wholly or in part without written permission of Tonkin Zulaikha Greer Architects Pty Ltd.	BROWN CONSULTING T (02) 9004 8855	WSP T (02) 8907 0900	AECOM T (02) 8934 0564	CITY PLAN SERVICES T (02) 8270 3500	AUSTRALIAN TURF CLUB LTD	ROYAL RANDWICK RACECOURSE HOTEL	TONKIN ZULAIKHA GREER ARCHITECTS 117 Reservoir Street Sunny Hills, NSW 2010 ABN: 46002722349 P: (02) 9215 4900 F: (02) 9215 4901 EMAIL: jgm@tazg.com.au	LEVEL 1 PLAN	JB, RM
19.11.12	B	PLANNING APPLICATION AMENDMENT										TG
01.08.13	C	SUBMITTED WITH PREFERRED PROJECT REPORT										
				QUANTITY SURVEYOR SLATTERY AUSTRALIA PTY LTD T (02) 9423 8850	TRAFFIC ENGINEER PARKING CONSULTANTS INTERNATIONAL T (02) 9968 1844	FIRE ENGINEER RAW FIRE T (02) 9299 6605	TOWN PLANNER URBIS T (02) 8223 9900		PROJECT ADDRESS Royal Randwick Racecourse Alison Road, Randwick, NSW 2031 PROJECT NO : 10025		SCALES 1:200/A1 1:400/A3	DATE AUGUST 2013
											PHASE PA	REVISION C
											DRAWING NO A-1002	



DATE	REV	NOTES	NOTES:	STRUCTURAL & CIVIL ENGINEER	ELECTRICAL, MECHANICAL & HYDRAULIC ENGINEER	FACEAD CONSULTANT	PCA	CLIENT:	PROJECT:	ARCHITECT	DRAWING TITLE	DRAWN BY
22.05.12	A	PLANNING APPLICATION ISSUE	Do not scale off drawings. Use figured dimensions only. Report any discrepancies to the architect. These designs, plans, specifications and the copyright therein are the property of Tonkin Zulaikha Greer Architects Pty Ltd, and must not be reproduced or copied wholly or in part without written permission of Tonkin Zulaikha Greer Architects Pty Ltd.	BROWN CONSULTING T (02) 9004 8855	WSP T (02) 8907 0900	AECOM T (02) 8934 0564	CITY PLAN SERVICES T (02) 8270 3500	AUSTRALIAN TURF CLUB LTD T (02) 9663 8400	ROYAL RANDWICK RACECOURSE HOTEL	TONKIN ZULAIKHA GREER ARCHITECTS 117 Reservoir Street Sunny Hills, NSW 2010 ABN: 46002722349 P: (02) 9215 4900 F: (02) 9215 4901 EMAIL: jgm@rzg.com.au	LEVEL 2 PLAN	JB, RM
19.11.12	B	PLANNING APPLICATION AMENDMENT										TG
01.08.13	C	SUBMITTED WITH PREFERRED PROJECT REPORT		QUANTITY SURVEYOR SLATTERY AUSTRALIA PTY LTD T (02) 9423 8850	TRAFFIC ENGINEER PARKING CONSULTANTS INTERNATIONAL T (02) 9968 1844	FIRE ENGINEER RAW FIRE T (02) 9299 6605	TOWN PLANNER URBIS T (02) 8223 9900				SCALES 1:200/A1 1:400/A3	DATE AUGUST 2013
											PHASE PA	REVISION C



DATE	REV	NOTES	NOTES:	STRUCTURAL & CIVIL ENGINEER	ELECTRICAL, MECHANICAL & HYDRAULIC ENGINEER	FACADE CONSULTANT	PCA	CLIENT:	PROJECT:	ARCHITECT	DRAWING TITLE	DRAWN BY
22.05.12	A	PLANNING APPLICATION ISSUE	Do not scale off drawings. Use figured dimensions only. Report any discrepancies to the architect. These designs, plans, specifications and the copyright therein are the property of Tonkin Zulaikha Greer Architects Pty Ltd, and must not be reproduced or copied wholly or in part without written permission of Tonkin Zulaikha Greer Architects Pty Ltd.	BROWN CONSULTING T (02) 9004 8855	WSP T (02) 8907 0900	AECOM T (02) 8934 0564	CITY PLAN SERVICES T (02) 8270 3500	AUSTRALIAN TURF CLUB LTD T (02) 9663 8400	ROYAL RANDWICK RACECOURSE HOTEL	117 Reservoir Street Sunny Hills, NSW 2010 ABN: 46002722349 P: (02) 9215 4900 F: (02) 9215 4901 EMAIL: jgm@rzg.com.au	LEVEL 3 PLAN	JB
01.08.13	B	SUBMITTED WITH PREFERRED PROJECT REPORT		QUANTITY SURVEYOR SLATTERY AUSTRALIA PTY LTD T (02) 9423 8850	TRAFFIC ENGINEER PARKING CONSULTANTS INTERNATIONAL T (02) 9968 1844	FIRE ENGINEER RAW FIRE T (02) 9299 6605	TOWN PLANNER URBIS T (02) 8223 9900		PROJECT ADDRESS Royal Randwick Racecourse Alison Road, Randwick, NSW 2031 PROJECT NO: 10025	TONKIN ZULAIKHA GREER ARCHITECTS 117 Reservoir Street Sunny Hills, NSW 2010 ABN: 46002722349 P: (02) 9215 4900 F: (02) 9215 4901 EMAIL: jgm@rzg.com.au	SCALES 1:200/A1 1:400/A3	CHECKED TG
											PHASE PA	DATE AUGUST 2013
											DRAWING NO A-1004	REVISION B

