

**BULGA
COAL**

GLENCORE



Visual Impact Management Plan

Number: BULCX-2103827161-5568

Owner: Coordinator - Environment & Community

Status: Approved

Version: 6.0

Effective: 19/07/2021

Review: 19/07/2026

Uncontrolled unless viewed on the intranet

Table of Contents

1.	Introduction.....	3
1.1	Purpose and Scope	3
1.2	Roles and Responsibilities	7
2.	Consultation	7
2.1	Consultation during the Development of the Bulga Optimisation Project and EIS	7
2.2	Consultation on the Development of this Plan	8
2.3	Consultation for the current version of this Plan	8
3.	Existing Environment.....	8
4.	Visual Mitigation	9
4.1	Noise and Visual Bund Design Features	9
4.1.1	Noise and Visual Bund Monitoring and Maintenance	9
4.2	Broke Road Design Features	9
4.2.1	Road User Distraction Review	11
4.3	Visual Mitigation of Infrastructure and Works	11
4.4	Rehabilitation.....	11
5.	Visual Montages and Radial Analysis	11
6.	Lighting.....	12
7.	Complaint and Incident Management.....	18
7.1	Community Enquiries and Complaints	18
7.2	Incident and Non-compliance Notification and Reporting.....	18
8.	Monitoring and Reporting.....	18
8.1	Evaluation of Impacts and Performance	18
8.2	Managing unpredicted impacts	19
8.3	Reporting	19
9.	Review and Improvement	19
10.	Document Information	20
Appendix A – Consultation Records		21
Appendix B – Visual Assessment.....		28
Appendix C – Broke Road Visual Management Controls.....		33

Internal procedures have not been reviewed or endorsed by DPIE. Glencore takes responsibility for ensuring these procedures are in accordance with this management plan and generally in accordance with the development consent.

1. Introduction

The Bulga Coal Complex (BCC) comprises an open cut coal mine, Bulga Open Cut (BOC), an underground coal mine, Bulga Underground Operations (BUO), and a Coal Handling and Preparation Plant (CHPP). BCC currently operates under development consent **SSD-4960** for Bulga Open Cut, and development consent **DA 376-8-2003**, for Bulga Underground Operations. Bulga Underground Operations ceased underground mining in May 2018. Bulga Coal continue to operate goaf flares, a gas fired power station and associated gas drainage infrastructure.

The Bulga Optimisation Project approved in December 2014 included the development of the East Pit, re-alignment of Broke Road and the development of the Noise & Visual Bund.

In 2019, Bulga Coal applied to modify the Bulga Open Cut SSD-4960 (Mod 3) and Bulga Underground DA 376-8-2003 (Mod 7). Mod 3 and Mod 7 were approved on 16 July 2020. Key aspects of the modifications include:

SSD-4960 (Mod 3)

- continuation of mining behind the noise and visual bund and within the existing approved project area;
- relocation of tailings within the Deep Pit to an in-pit tailings facility in the north of the mine to enable mining of the underlying coal. Relocation of the tailings will be via a system of pumps and pipelines;
- mining of an approximately 63 million additional tonnes of coal over the life of the mine;
- disturbance of an additional 20.2 hectares (ha) of vegetation, which will be offset;
- extension of the mine life of the open cut operation by four years to 2039; and
- re-disturbance and rehabilitation of approximately 200 ha of existing immature rehabilitation.

DA 376-8-2003 (Mod 7)

- demolition and relocation of the Bulga Underground Operations Mining Infrastructure Area (MIA);
- allowance for the relocation of underground mine ventilation, as required;
- relocation of the 9 megawatt (MW) power station and associated flares;
- relocation of the Bulga Underground Operations electrical substation; and
- upgrading, relocation, construction and decommissioning of mine owned power transmission lines and associated access tracks.

These developments are outlined in *Figure 1*.

1.1 Purpose and Scope

The purpose of this Visual Impact Management Plan (VIMP) is to outline the strategies to be implemented to minimise the visual impacts from BOC on the surrounding community.

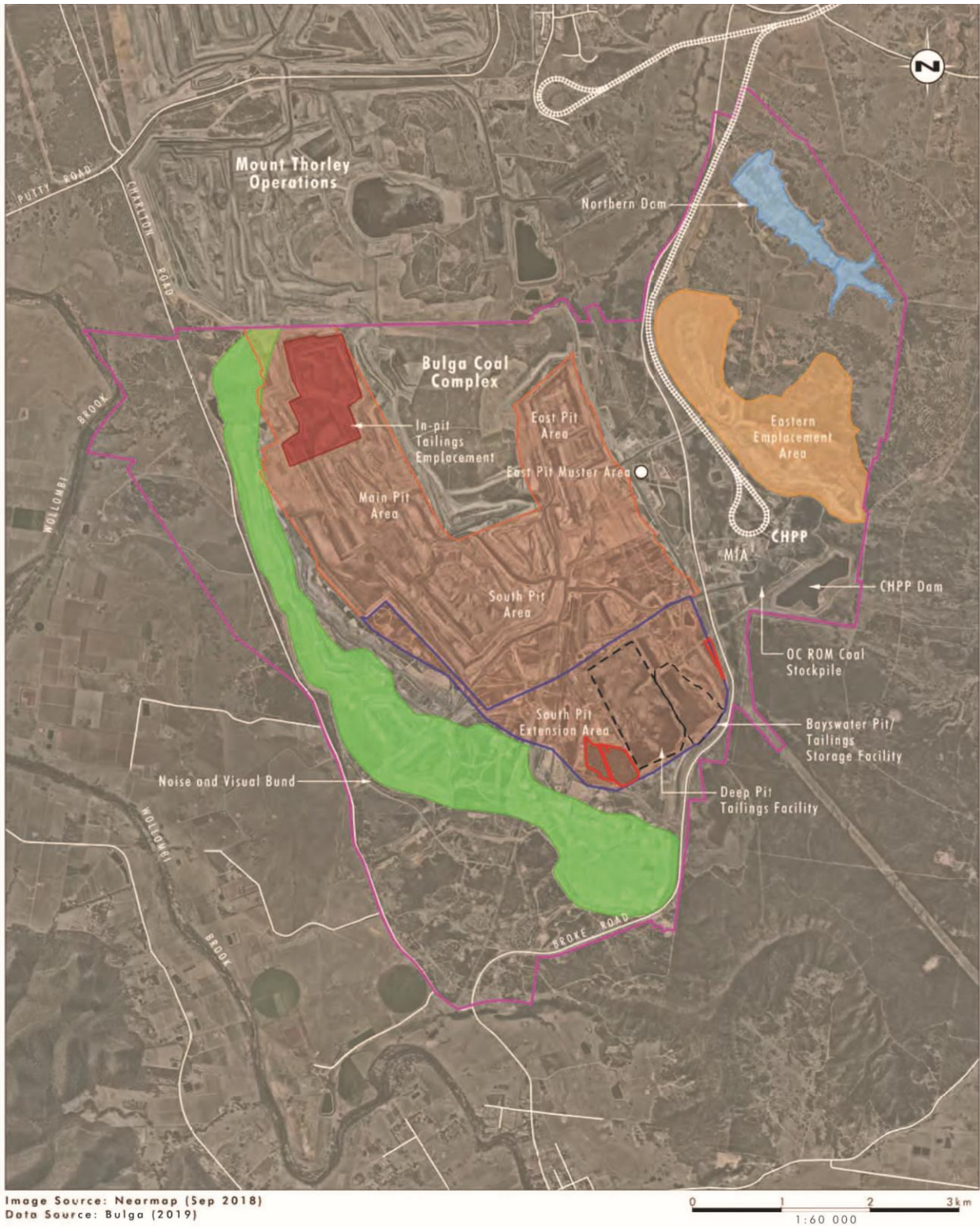
The relevant conditions from **SSD-4960** and where they are addressed in this document are provided in *Table 1* below.

Table 1 – Consent Conditions

Consent Condition	Section of this Document
Noise & Visual Bund 47. The Applicant must design, construct and maintain the proposed noise and visual bund to the satisfaction of the Planning Secretary. This bund must:	
a) Be completed as soon as practicable after the commencement of development under this consent;	4.1
b) Be constructed to ensure the western (outer) edge of the bund is at its full design height (up to 165 m AHD) with an initial vegetation cover, within 4 years and 9 months (i.e. 1 September 2019) of the date of this consent; and	4.1

Consent Condition	Section of this Document
c) Be generally consistent with the concept plan in the EIS and the figure in Appendix 12.	4.1
Visual Screening – Broke Road 48. The Applicant must install and maintain suitable planting and screening to minimise the views of on-site mining infrastructure from Broke Road, in consultation with Council and to the satisfaction of the Planning Secretary. This planting and screening must:	4.2
a) Be installed in conjunction with the road works and prior to the use of the realignment; and	4.2
b) Be strategically located along the realignment of Broke Road or within the site.	4.2
Visual & Lighting 49. The Applicant must:	
a) implement all reasonable and feasible measures to minimise the visual and off-site lighting impacts of the development;	6
b) ensure no fixed outdoor lights shine above the horizontal or above the building line or any illuminated structure;	6
c) ensure no in-pit mobile lighting rigs shine above the pit wall and other mobile lighting rigs do not shine above the horizontal;	6
d) ensure that all external lighting associated with the project complies with Australian Standard AS4282 (INT) 1997 – Control of Obtrusive Effects of Outdoor Lighting, or its latest version;	6
e) take all practical measures to shield views of mining operations from users of public roads and privately-owned residences; and	4 and 6
f) ensure the visual appearance of all new buildings, structures, facilities or works (including paint colours and specifications) constructed following the approval of Modification 3 is aimed at blending as far as possible with the surrounding landscape, to the satisfaction of the Planning Secretary.	4.3
Visual Impact Management Plan 50. The Applicant must prepare and implement a Visual Impact Management Plan for the development to the satisfaction of the Planning Secretary. This plan must:	
a) be prepared in consultation with Council, and submitted to the Planning Secretary for approval within 6 months of the date of this consent;	2
b) include the detailed plans for: <ul style="list-style-type: none"> • Noise & Visual Bund; and • visual screening along the Broke Road realignment; 	4.1 4.2
c) describe the measures that would be implemented to minimise the visual and lighting impacts of the development; and	4 and 6
d) Include a program to monitor and report on the implementation of the detailed plans and the effectiveness of the proposed visual and lighting mitigation measures. The Applicant must implement the Visual Impact Management Plan as approved by the Planning Secretary.	7
Management Plan Requirements Schedule 5 Condition 3. The Applicant must ensure that the management plans required under this consent are prepared in accordance with any relevant guidelines, and include:	5

Consent Condition	Section of this Document
(a) detailed baseline data;	
(b) a description of: <ul style="list-style-type: none"> the relevant statutory requirements (including any relevant approval, licence or lease conditions); any relevant limits or performance measures/criteria; the specific performance indicators that are proposed to be used to judge the performance of, or guide the implementation of, the development or any management measures; 	Table 1
(c) a description of the measures that would be implemented to comply with the relevant statutory requirements, limits, or performance measures/criteria;	4, 5 and 6
(d) a program to monitor and report on the: <ul style="list-style-type: none"> impacts and environmental performance of the development; effectiveness of any management measures (see c above); 	8.1 and 8.3
(e) a contingency plan to manage any unpredicted impacts and their consequences;	4.3, 4.4 and 8.2
(f) a program to investigate and implement ways to improve the environmental performance of the development over time;	8.1 and 9
(g) a protocol for managing and reporting any: <ul style="list-style-type: none"> incidents; complaints; non-compliances with statutory requirements; and exceedances of the impact assessment criteria and/or performance criteria; 	7
(h) a protocol for periodic review of the plan. <i>Note: The Planning Secretary may waive some of these requirements if they are unnecessary or unwarranted for particular management plans.</i>	9



Legend

- Project Area
- Additional Disturbance Area
- South Pit Extension Area
- Mining Area
- Noise and Visual Bund
- Eastern Emplacement Area
- Northern Dam
- Rail Line

FIGURE 1.3

**Bulga Optimisation Project (SSD 4960)
Proposed Modification 3
Key Mining Features**

Figure 1 – SSD4960 Modification 3 Proposed Development

1.2 Roles and Responsibilities

Relevant roles and responsibilities have been developed for the implementation of this VBMP. These are outlined in *Table 2*.

Table 2 – Roles and Responsibilities

Role	Responsibilities
Operations Manager	Approve sufficient resources for the implementation of this plan
BCC Environment & Community Manager	Approve sufficient resources for the implementation of this plan; and Assist with external reporting requirements as well as subsequent revisions of this VIMP
BOC Environment & Community Officer	Facilitate the external reporting requirements outlined in this plan; and Undertaken training as required to communicate the requirements of this plan to all relevant personnel and contractors

2. Consultation

2.1 Consultation during the Development of the Bulga Optimisation Project and EIS

A comprehensive Stakeholder Engagement Program was undertaken as part of the Bulga Optimisation Project (BOP) Environmental Impact Statement (EIS), which included consultation with neighbouring landholders and residents, local community groups, businesses, government agencies and other stakeholders. Throughout the initial consultation phase, stakeholders were requested to identify aspects of most importance to them. Bulga Coal held two community workshops on visual impact mitigation with interested community members. Bulga Coal engaged a landscape architect to facilitate a community workshop to discuss the key design principles that would be desirable in the Project landforms to minimise visual impacts.

The three key landscaping features identified through the In Focus workshop included:

- undulating the bund profile;
- avoiding straight run drainage drop structures if practicable; and
- developing more ‘natural’ tree planting patterns that reflect actual vegetation patterns.

These key landscaping features were considered in the NVB design along with other practical constraints such as constructability, drainage, slopes and conformity to the Project’s final land use and landform design, including rehabilitation objectives.

To provide further consultation on visual aspects of the Project, a Visual 3-Dimensional fly around of the proposed Open Cut development was developed and used during consultation sessions for the EIS. Videos from the fly around were provided on the Bulga Coal Website.

2.2 Consultation on the Development of this Plan

Bulga Coal has undertaken consultation with Singleton Council throughout the development of the Project EIS and post-approval as part of the detailed design of the Broke Road re-alignment.

On 21st May 2015, a meeting was held with Singleton Council to review the draft of VIMP. The Council considered the document consistent with the consultation through the Project and supported the concept of a 6 monthly community monitoring and reporting process as outlined in **Section 6** (refer to **Appendix A**).

On 15 July 2015, a Compliance Officer of the Department of Planning and Environment undertook an inspection of the road alignment as part of the review of this Plan. The inspection included a drive through of the road alignment. From this meeting a number of remedial actions were implemented, and the plan was subsequently approved on 10 August 2015 (**Appendix A**).

This revised version of the VIMP was provided to Singleton Council for review on 4 November 2016, which council reviewed and approved on 15 November 2016 (**Appendix A**).

2.3 Consultation for the current version of this Plan

The revised version of the VMP was provided to the Singleton Council for consultation on 13 February 2023, and no comments were received in response.

3. Existing Environment

The predominant land uses in the vicinity of the BCC include coal mining, grazing, viticulture, tourism and hospitality and rural-residential holdings. The Broke/Bulga area has significant contrast in the existing visual catchment with the vegetated elevated slopes of the Broken Back Range, and Wollemi and Yengo escarpments framing the Wollombi Brook valley. There are numerous vineyards as well as cropping on the alluvial zones, which along with the vegetated Commonwealth land to the east of BCC contrast to the mining areas of the BCC, Mount Thorley / Warkworth operations and Wambo Coal Mine and the industrial nature of the Mount Thorley Industrial Estate. These various landscape elements provide significant contrast in visual amenity from areas with a largely natural or agricultural character which are generally considered of high visual amenity, to areas with significant mining or industrial landscape features. These areas are typically considered to have a low visual amenity.

The developed nature of parts of the central area of the Hunter Valley is highly visible from the major transport routes of the Golden Highway and the New England Highway. In the vicinity of the BCC, mined surfaces, coal related infrastructure (conveyors, mining surface facilities, rail facilities and lines) and other built infrastructure such as high voltage power lines contribute to the visual environment.

With the exception of the eastern emplacement area, the majority of the mining infrastructure and operations are screened from views from the north and east of the site through existing topography and vegetation. Views of mining operations and infrastructure from many of the public viewing locations from the west, north-west and south-west of the site are obscured by the rehabilitated noise and visual bund.

Parts of the BCC are visible from various locations across Broke Road, Putty Road and Charlton Road. The existing operations currently result in a night time glow, which affects the night time visual amenity.

4. Visual Mitigation

4.1 Noise and Visual Bund Design Features

The Noise and Visual Bund (NVB) was a key visual mitigation feature of the open cut mine plan approved for the Bulga Optimisation Project. The outface of the NVB was constructed and rehabilitated progressively over a period of 4 years and 9 months and completed in August 2019. The NVB created a rehabilitated landform between Bulga Open Cut operations and the localities of Bulga, Milbrodale and Broke.

The NVB was constructed with vertical relief to create a more natural looking landform. It was constructed to an average height of approximately RL 150 mAHD. Selected areas along the NVB, including in the far northern section, were reduced to approximately RL 130 mAHD. Some areas of the NVB were dumped up to a height of RL 160 mAHD to provide additional topographical relief of up to 30 metres. A plan showing the vertical relief and compliance to the concept design landform is shown on *Figure 2*. The outface of the NVB was seeded to the Central Hunter Greybox-Ironbark Woodland and Central Hunter Spotted Gum-Ironbark-Greybox Woodland Endangered Ecological Communities.

4.1.1 Noise and Visual Bund Monitoring and Maintenance

Bulga Coal Complex conducts an annual rehabilitation monitoring program to confirm the rehabilitation objectives and performance and closure criteria are being met and also to identify opportunities for improvement. Monitoring programs have been designed to effectively monitor onsite revegetation, surrounding vegetation, species diversity and riparian habitats. The annual monitoring program includes the following:

- Annual Walkover Inspection; and
- Annual Flora Rehabilitation Monitoring.

The annual walkover inspection is conducted by an experienced rehabilitation consultant and seeks to identify specific areas requiring care and maintenance activities (e.g. sediment and erosion, weed spraying, fertiliser application) over all rehabilitation areas at Bulga Open Cut.

The annual rehabilitation flora monitoring includes a series of analogue sites which have been used to develop some of the completion criteria for each type of rehabilitation (woodland, pasture, riparian), and track the progression of each rehabilitation area.

4.2 Broke Road Design Features

A detailed design of the Broke Road realignment was completed in 2014. The realignment is approximately 9.2km long, and is located along the southern and eastern edges of BOC (refer to *Figure 1*). Avoiding mining operations as much as practical was a key consideration in the design.

The road realignment was also designed and constructed to best fit with existing topography, satisfy site constraints, minimise earthworks and be suitable for a design speed of 100 kilometres per hour.

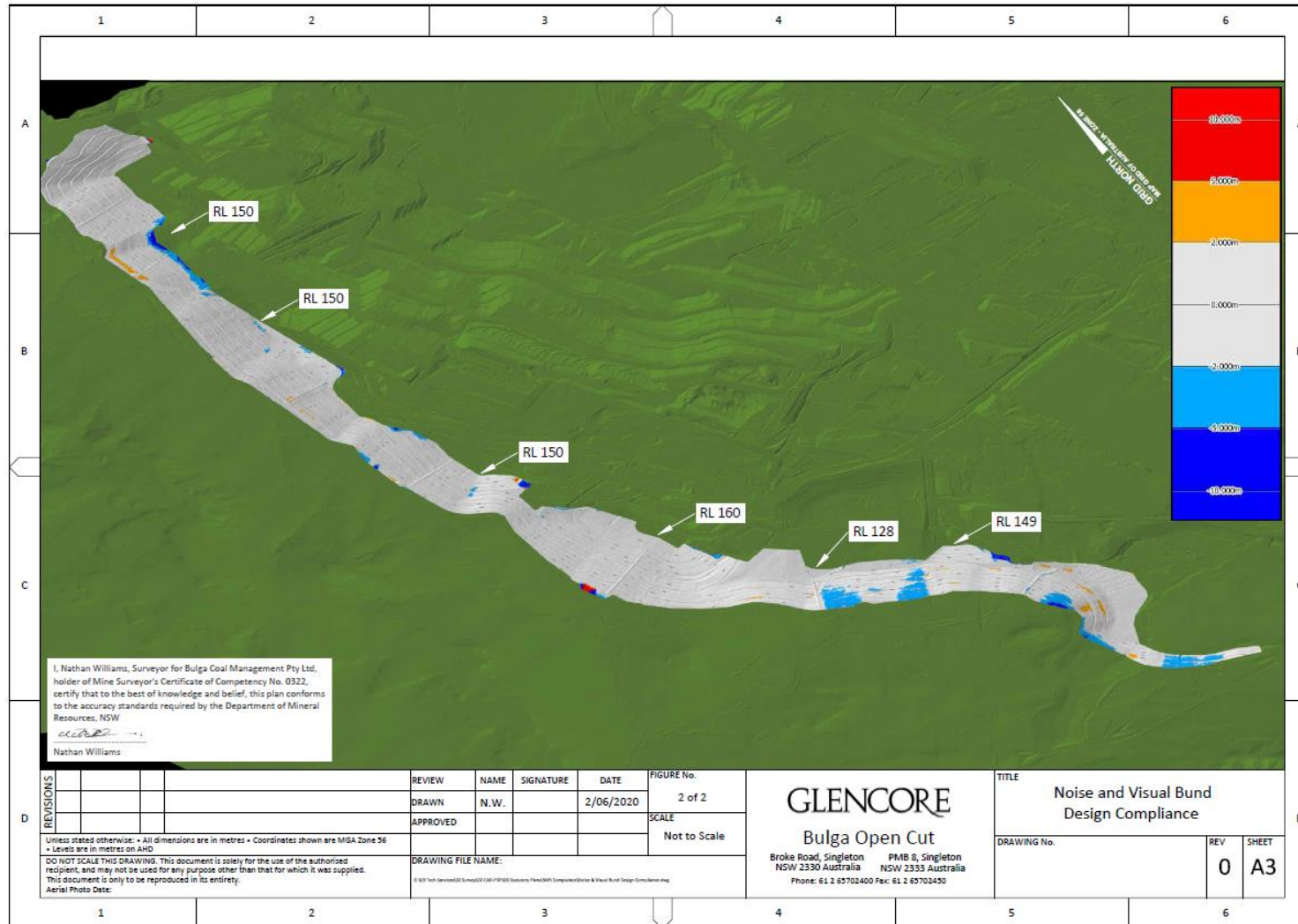


Figure 2 – As built survey of the outface Noise and Visual Bund and compliance to design.

4.2.1 Road User Distraction Review

A visual assessment of the potential distractions on the Broke Road realignment was also undertaken in 2014. The potentially distracting activities included:

- moving plant – movement of haul trucks, light vehicles and other mining equipment along haul roads or other mine roads across or near Broke Road;
- mine overburden – the dumping / placement of mine overburden at various locations near Broke Road. The primary area of road user vision will be in the placement and construction of the noise bund to the south and west of the site and the eastern emplacement area to the north. In the development of the bunds, there will be moving plant and equipment, potentially in view of road users. At conclusion of overburden placement, the bunds will be formed and rehabilitated;
- fixed plant – the Mine Infrastructure Areas (MIA) of the open cut and underground mines have a range of fixed plant including conveyors, transfer houses / bins, stockpiles and buildings; and
- mine pit – and other infrastructure such as tailing dams are in proximity to the road and have the potential for distraction due to its size and depth.

Potential distractors are outlined below, in order of highest potential to lowest potential:

1. moving plant – has the most potential to distract road users. This equates to a moderate to high distraction potential where in close proximity to the road.
2. fixed plant – has a low to medium distraction potential in close proximity to the road.
3. mine pit – excluding plant, has a low to medium distraction potential in close proximity to the road.

A number of design features such as bunds, fences and tree plantings were incorporated into the design and implemented to mitigate these potential distractions. These features are shown in **Appendix C**.

4.3 Visual Mitigation of Infrastructure and Works

Bulga Coal will ensure the visual appearance of all new buildings, structures, facilities or works (including paint colours and specifications) constructed following the approval of Modification 3 are aimed at blending as far as possible with the surrounding landscape. These considerations will be addressed during the design and planning phase of new constructions.

4.4 Rehabilitation

Progressive rehabilitation to reduce the duration of visible soil exposure, including the use of temporary rehabilitation as appropriate will be implemented.

Planting of appropriate vegetation or other screening to reduce views of mining infrastructure will be implemented as appropriate.

5. Visual Montages and Radial Analysis

To assess the visual impacts of the site, a series of radial analysis and visual montages were completed for potentially impacted locations surrounding the site.

Constructing visual montages of 'before and after' scenarios illustrates the existing landscape and provides a comparison landscape, including BOC and its visual amenity measures.

Radial analyses were developed to identify what can theoretically be seen from particular vantage points. The radial analysis illustrates what is visible from a height of 1.7 metres at that location (i.e. from average eye height).

Radial analyses were completed using life of mine profiles as a representation of the maximum height of the constructed landform to gauge the potential visual impact from targeted viewpoints. These locations are considered representative of localities that have the highest potential for visual impact.

Radial analysis was completed for a number of localities surrounding BOC for Modification 3. The analysis identified that there will be minor increased visibility associated with the change in overburden emplacement areas at the following location points:

- Hill St, Broke;
- Catherine Vale Vineyard (Fordwich);
- Putty Rd, Bulga;
- Residence in upper Bulga Village; and
- Bulga Community Centre.

Radial analyses for these vantage points are shown in *Figure 3, Figure 4, Figure 5, Figure 6* and *Figure 7*.

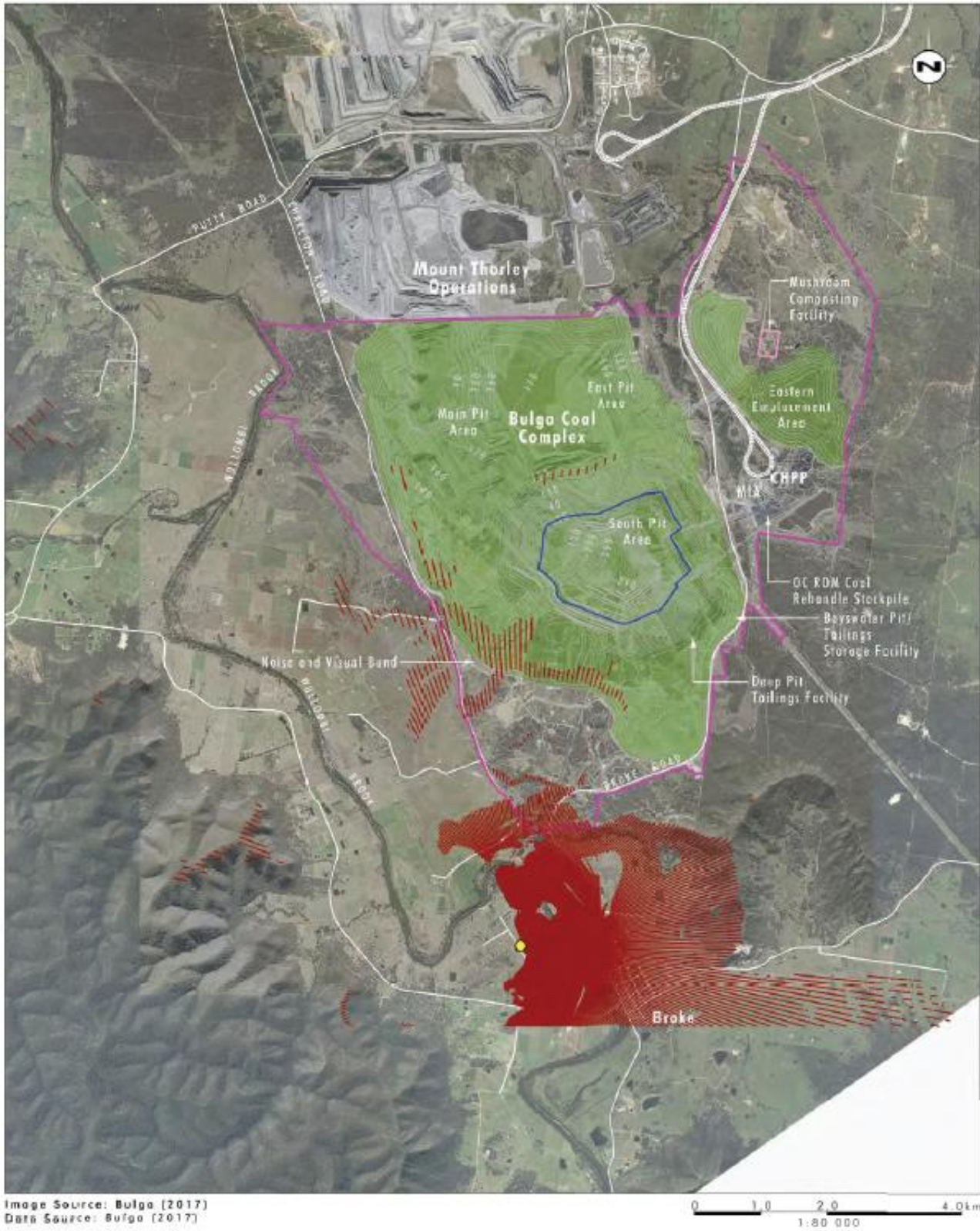
Visual montages for Modification 3 include a comparison for locations to the south and west, capturing the NVB, for proposed year 3 (2023), year 6 (2026) and year 11 (2031) of the development. These montages are included in *Appendix B*.

6. Lighting

The BCC is approved to operate 24 hours a day, 7 days a week. Therefore, night time lighting has the potential to affect the local night time visual amenity. To manage these potential impacts, BCC currently implement a range of measures to reduce the impact of lighting on surrounding residential areas. These measures include plantings, use of shields and directional lighting.

Any new fixed lighting will be installed and maintained in accordance with Australian Standard AS4282 (INT) 1995 *Control of Obtrusive Effects of Outdoor Lighting*.

Mobile lighting, including equipment headlights, are utilised in active mining areas during night time operations. Mobile lighting plant will generally be located in pit and screened from nearby viewpoints, or directed away from residential areas where screening is not possible. In-pit mobile lighting plant will be set up so that they do not shine above the pit wall. Other mobile lighting plant will be set up so that they do not shine above the horizontal. The NVB is particularly effective in screening lighting from the residences to the west, south-west and south of the BCC.



- Legend**
- Project Area
 - Maximum Modelled Pit Lake Level
 - Rehabilitation
 - Visual Location
 - Terrain Visible from Visual Location

FIGURE 6.9
 Visual Location
 Point 3 - Hill Street

Figure 3 – Radial Analysis Hill St, Broke

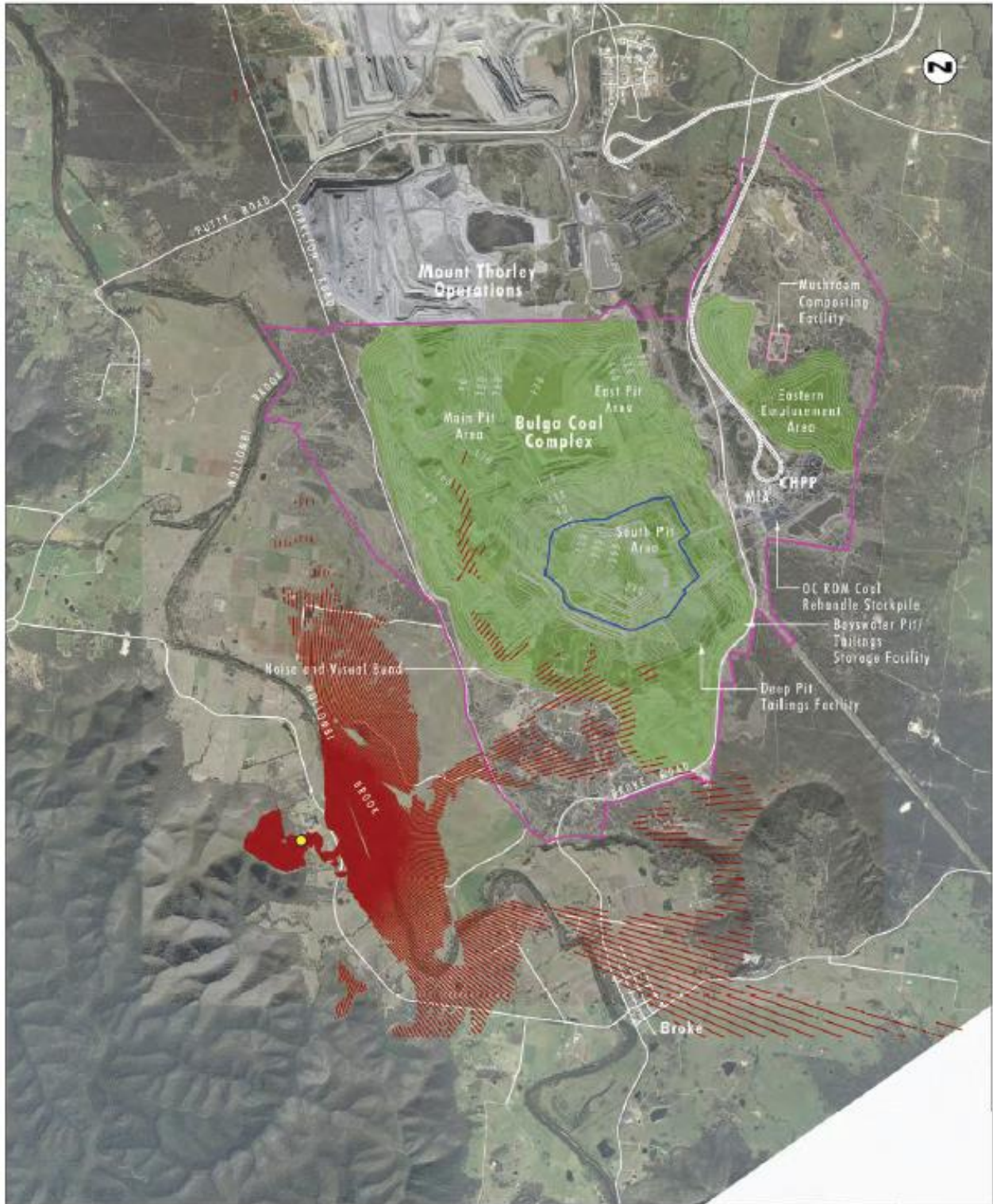


Image Source: Bulga (2017)
Data Source: Bulga (2017)

- Legend**
- Project Area
 - Maximum Modelled Pit Lake Level
 - Bulked Material
 - Visual Location
 - ▨ Terrain Visible from Visual Location

FIGURE 6.10
Visual Location
Point 4 - Catherine Vale Vineyard Verandah

Figure 4 – Radial Analysis Catherine Vale Vineyard (Fordwich)

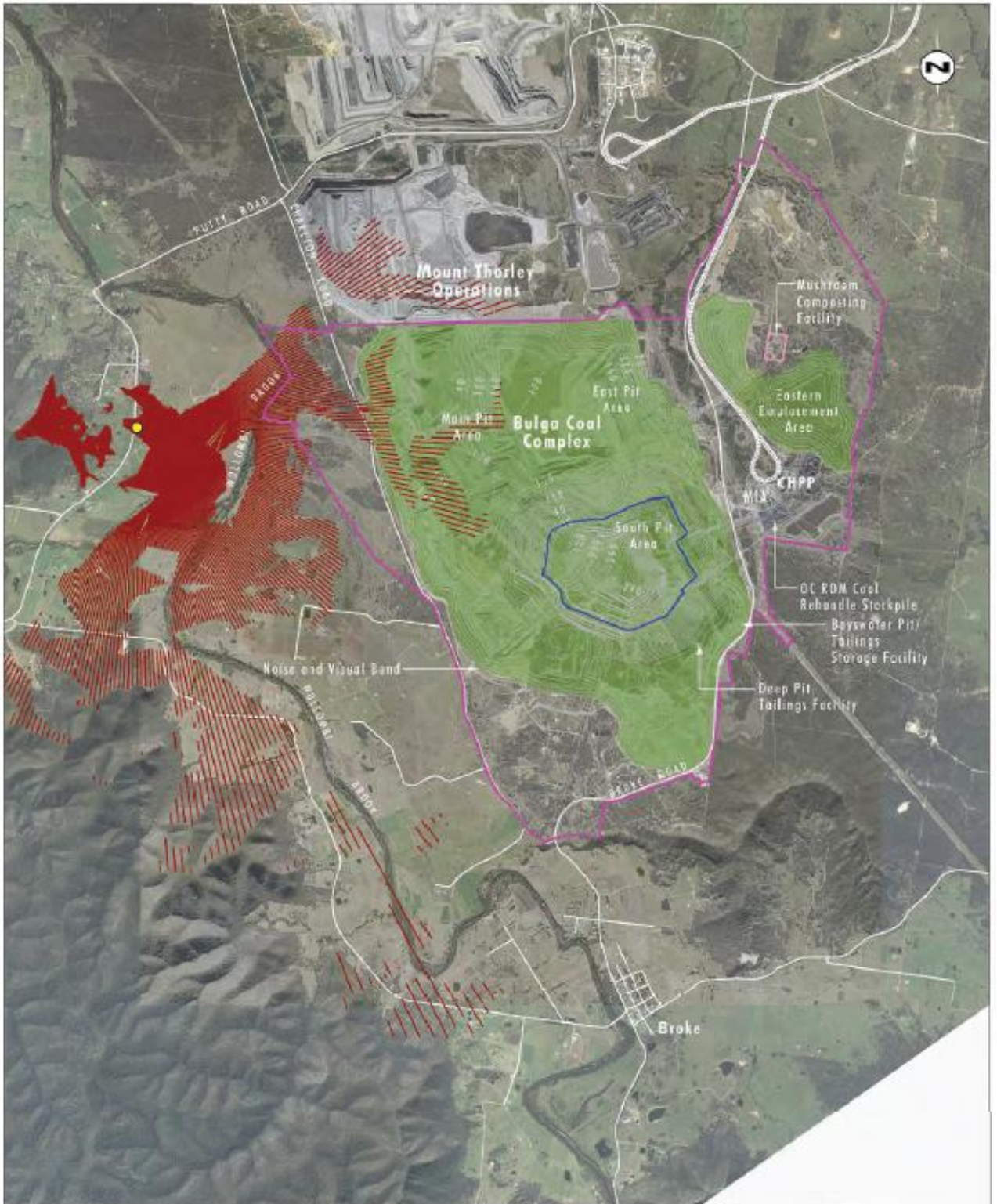


Image Source: Bulga (2017)
Data Source: Bulga (2017)

- Legend**
- Project Area
 - Maximum Modelled Pit Lake Level
 - Rehabilitation Area
 - Visual Location
 - Terraie Visible from Visual Location

FIGURE 6.11
Visual Location
Point 6 - Putty Road

Figure 5 – Radial Analysis Putty Rd, Bulga

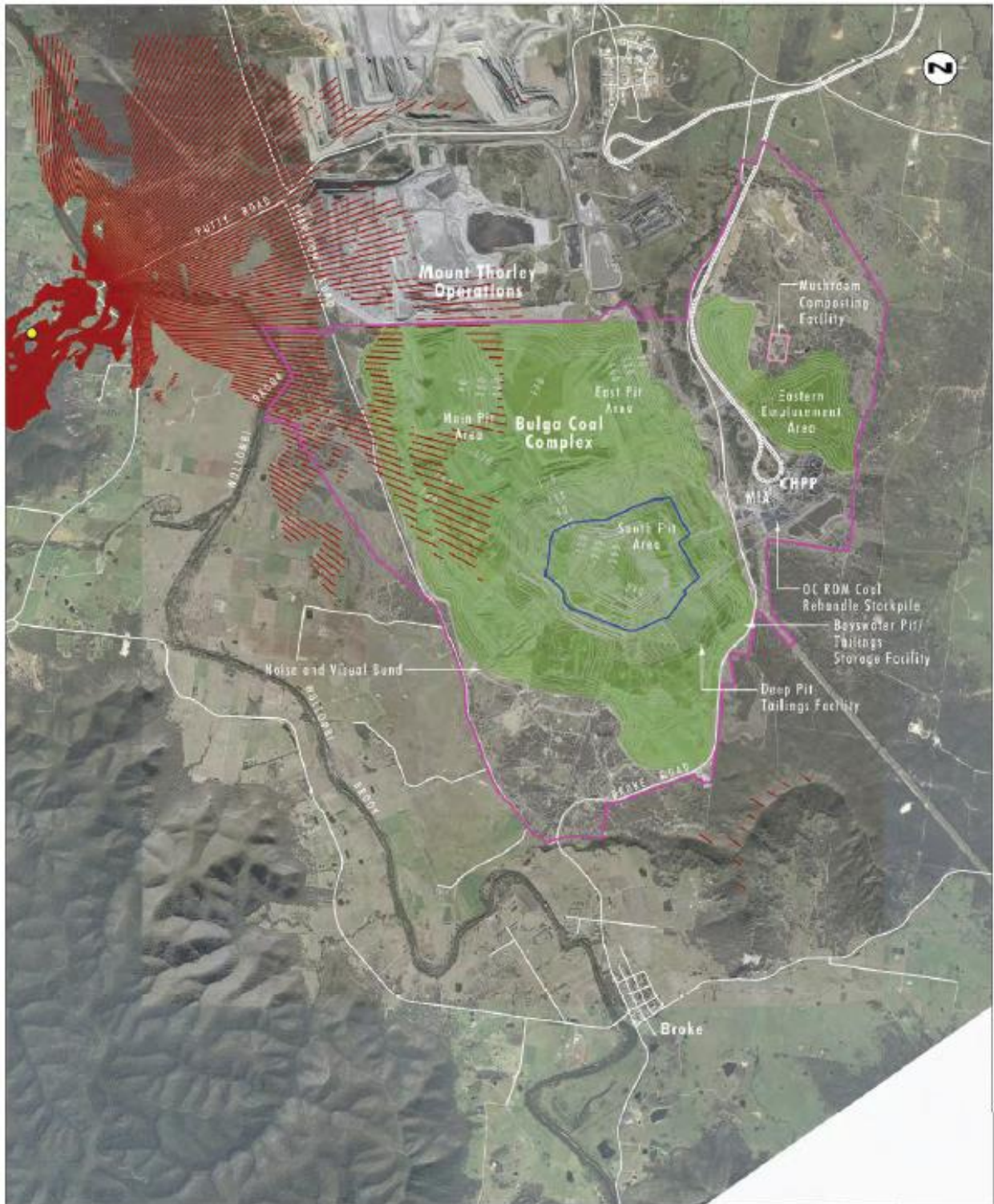


Image Source: Bulga (2017)
Data Source: Bulga (2017)

0 1.0 2.0 4.0km
1:80 000

- Legend**
- Project Area
 - Maximum Modelled Pit Lake Level
 - Bulk Material
 - Visual Location
 - Terrain Visible from Visual Location

FIGURE 6.12
Visual Location
Point 8 - Bulga Village

Figure 6 – Radial Analysis for residence in upper Bulga Village

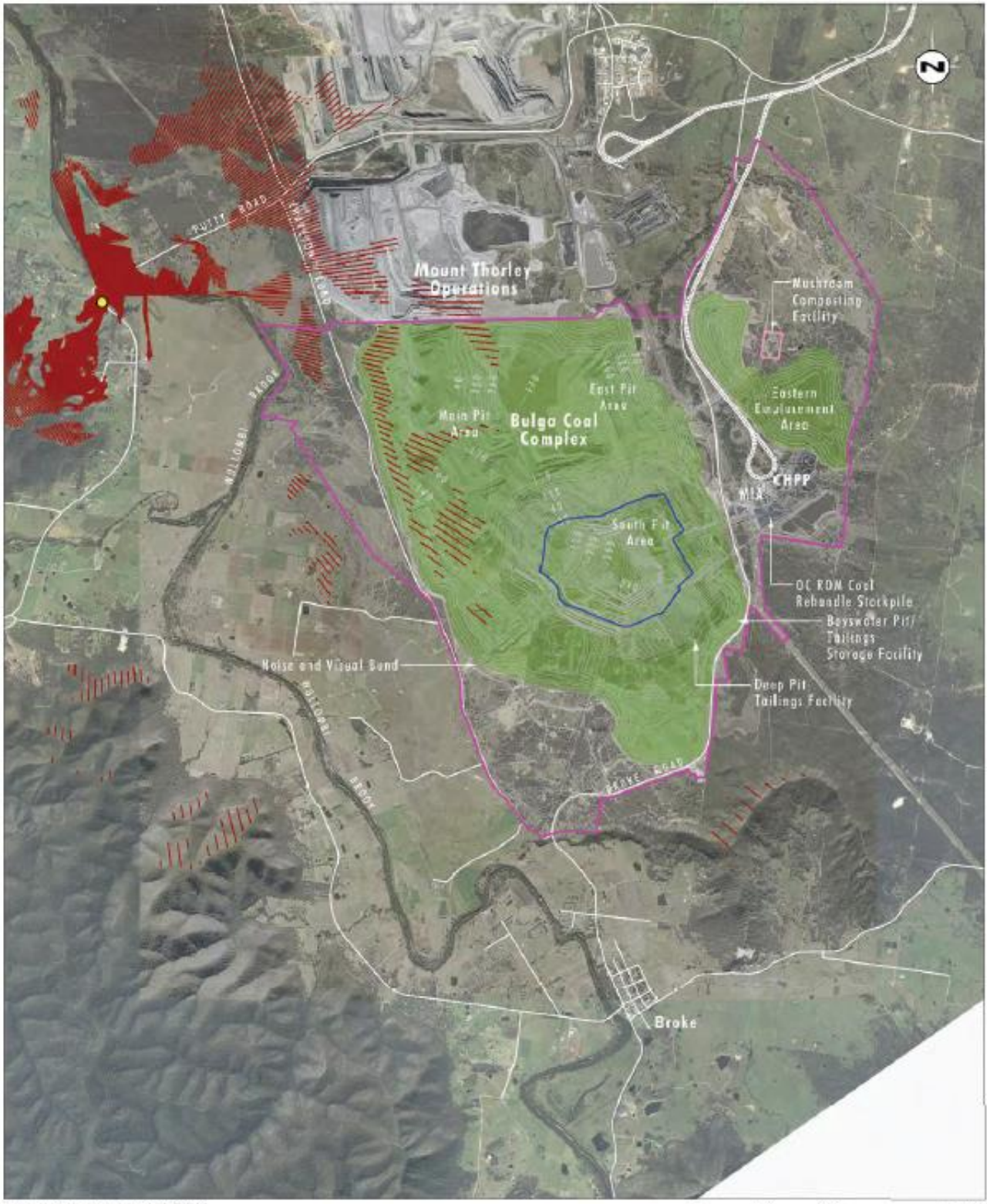


Image Source: Bulga (2017)
Data Source: Bulga (2017)

- Legend**
- Project Area
 - Maximum Modelled Pit Lake Level
 - Rehabilitation
 - Visual Location
 - Terrain Visible from Visual Location

FIGURE 6.13
Visual Location
Point 9 - Bulga Community Centre

Figure 7 - Radial Analysis Bulga Community Centre

7. Complaint and Incident Management

7.1 Community Enquiries and Complaints

Bulga Coal operate a 24-hour complaints line. Environment and community personnel are responsible for acknowledging complaints and commencing a complaint investigation within 24 hours of receiving a complaint and identifying any necessary preventative or corrective actions. Complaints are recorded in the site's complaints database and forwarded to GCAA in accordance with the complaints procedure outlined in the *Bulga Coal Complex Environmental Management Strategy – BULCX-1254107625-5* (EMS).

The complaints management process described in the Environmental Management System involves:

- acknowledging all complaints, responding to the complainant within 24-hours, where practicable;
- registering all complaints in the site database;
- investigating complaints impartially giving proper consideration to the facts and circumstances prevailing at the time;
- implementing corrective actions if required; and
- reporting outcomes and corrective actions to relevant stakeholders.

7.2 Incident and Non-compliance Notification and Reporting

The EMS outlines the process for managing environmental incidents and non-compliances. The process involves recording, notifying and investigating incidents in accordance with statutory and internal requirements and implementing corrective/preventative actions, if required.

Within seven days of becoming aware of a non-compliance, Bulga Coal will notify the Department of Planning, Infrastructure and Environment (DPIE) of a non-compliance. The notification will be made in writing to compliance@planning.nsw.gov.au and identify the development (including the development application number and name), set out the conditions of the consent that the Development is non-compliant with, why does it not comply and the reasons for the non-compliance (if known) and what actions have been, or will be, undertaken to address the non-compliance.

8. Monitoring and Reporting

8.1 Evaluation of Impacts and Performance

The performance of the BCC in relation to visual impacts is evaluated through:

- independent environmental audits;
- feedback from community consultation;
- investigations from lighting or visual complaints; and
- the Annual Review.

8.2 Managing unpredicted impacts

Bulga Coal's Change Management Procedure (BULOC-1104430715-2361) and the GCAA Change Standard (GCAA-625378177-9979) will be used to identify any proposed changes to existing activities that have the potential to cause visual impacts.

The change management process in the Bulga Coal's Change Management Procedure and the GCAA Change Standard involves the following steps:

- identify the change;
- assess the risk associated with the change and develop a risk treatment plan;
- approve the change subject to risk treatment;
- communicate and implement the change and the risk treatment actions;
- monitor and evaluate the change and risk treatment plan;
- document the change; and
- review the effectiveness of the implemented change.

8.3 Reporting

BOC provides an update on visual and lighting impact management in the Annual Review.

A summary of complaints received and actions taken is presented to the Bulga Complex Community Consultative Committee (CCC) as part of operational performance reviews, and is made available on the BCC website and reported in the Annual Review.

9. Review and Improvement

This plan was developed in consultation with the Singleton Council and DPIE. The VIMP will be reviewed periodically as required following changes to the sites internal or external context, and every 5 years as a minimum. Bulga Coal will review, and if necessary revise the VIMP within 3 months of:

- the submission of an annual review;
- the submission of an incident report;
- the submission of an audit report; or
- any modification to the conditions of either consent.

Where this review leads to revisions in the VIMP, then within 4 weeks of the review the revised document will be submitted to the DPIE for approval.

A copy of the current approved version of this management plan will be made available on the Bulga Coal website.

Bulga Coal will also undertake an annual review of the environment and community risk assessment and review visual impact risks to ensure that any trends towards a non-compliance are identified and that visual impacts from Bulga Coal are appropriately managed.

10. Document Information

Full details of the document history are recorded in the document control register, by version. A summary of the current change is provided in *Table 3* below.

Version	Date	Change Summary
1	August 2015	Initial Document
2	October 2016	Updated to include revised NVB design and completed construction of Broke Road Realignment
3	October 2017	Updated to include recommendations from DPE.
Draft 4	November 2018	Updated to include revised wording of Project Approval conditions and revision of monitoring and reporting (removal of committee).
4	April 2019	Approved by DPE on the 3 rd of April 2019. Approval letter inserted in Appendix A and document published on sharepoint.
5	September 2019	No changes have been made. Version 4 was published without all of the tracked changes accepted from Draft 4. The changes have now been accepted and the document has been republished.
6 Draft 1	July 2020	SSD-4960 Mod 3 and DA 376-08-2003 Mod 7 updates.
6 Draft 2	May 2021	Updated to include the following recommendations from DPIE: <ul style="list-style-type: none"> replaced Figure 1 with a higher resolution version; updated Section 1 to include a description of the latest modifications for SSD-4960 and DA 376-8-2003; included Section 4.1.1 to discuss the monitoring and maintenance for the NVB; included SSD 4960 condition 3 schedule 5 in Table 1; and included Sections 7, 8 and 9. Minor grammatical corrections were also made.
6	July 2021	Inserted DPIE approval letter dated 30 June 2021 in Appendix A. Published in sharepoint.
7 Draft 1	September 2022	Inclusion of additional screening (2.4m Colourbond fence) to be constructed along Broke Road as per inserted drawing 12587110_SK002 and 12587110_SK002 in Appendix C.
7 Draft 2	July 2023	Updated Section 2.3 following no feedback from the Singleton Council.

Appendix A – Consultation Records

Walls, Tim (Hunter Valley - AU)

From: Ihlein, Mark [mihlein@singleton.nsw.gov.au]
Sent: Friday, 22 May 2015 8:47 AM
To: Walls, Tim (Hunter Valley - AU)
Subject: RE: Bulga Coal - Visual Management Plan
Importance: High

Thanks Tim – I concur with your notes regarding Singleton Councils comments on the VMP.

Regards
Mark

Mark Ihlein
Director Planning and Sustainable Environment Group
Singleton Council

From: Tim.Walls@glencore.com.au [mailto:Tim.Walls@glencore.com.au]
Sent: Friday, 22 May 2015 8:42 AM
To: Ihlein, Mark
Subject: Bulga Coal - Visual Management Plan

Hi Mark,

Thank you for the opportunity to meet with you yesterday to discuss the Bulga Coal Visual Management Plan. Following the meeting we are proposing to update the consultation section of the Plan with the following summary.

Please could you advise if you feel this reflects our discussions?

Consultation on the Plan

Bulga Coal have undertaken regular consultation with Singleton Council throughout the development of the Project EIS and post-approval as part of the detailed design of the Broke Road re-alignment. On 21st May 2015 a meeting was held with Singleton Council to review a draft of the VMP. The Council considered the document consistent with the consultation through the Project and supported the concept of a 6 monthly community monitoring and reporting process as outlined in **Section 10**.

Thanks

Tim Walls
*Approvals Manager, Bulga Optimisation Project
Glencore*

Telephone: +61 (0)2 6570 2513
Fax: +61 (0)2 6570 2520
Mobile: +61 (0)438 433 857

Email: Tim.Walls@glencore.com.au



Contact: Scott Brooks
Phone: 6575 3401
Fax: 6575 3415
Email: scott.brooks@planning.nsw.gov.au
Our ref: SSD - 4960

Bulga Coal Complex
Att: Tim Walls
PMB 8
SINGLETON NSW 2330

Dear Tim,

Bulga Coal Complex – Visual Impact Management Plan Approval

Thank you for forwarding the Bulga Coal Complex Visual Impact Management Plan for review. It is required by Condition 50 Schedule 3 of the Bulga Approval SSD 4960. Following submission of the draft we inspected the site on the 15th July and the revised plan incorporates the findings of the inspection.

The Department has reviewed the plan and found generally satisfies the requirements of the Approval. I would like to advise you that the Secretary has approved the Plan.

There are no earlier versions of this Plan. This Plan comes into force on the 12th August 2015 and remains in force until replaced by any future updated approved Plans.

Could you please forward finalised copies of the above plan (preferably in PDF format with a copy of this approval letter appended) for the Department's records by the end of August 2015.

If you require further information or clarification in this matter please contact Scott Brooks on 6575 3401 or by email to scott.brooks@planning.nsw.gov.au.

Yours sincerely

A handwritten signature in black ink, appearing to read 'Scott Brooks'.

Scott Brooks
Investigations (Lead) Compliance

As Nominee for the Secretary, Department of Planning & Environment

10-8-2015

From: Ihlein, Mark <mihlein@singleton.nsw.gov.au>
Sent: Tuesday, 15 November 2016 12:32 PM
To: Northey, Ralph (Bulga Surface Ops - AU)
Subject: RE: Revision of the Bulga Coal Visual Impact Management Plan

Hi Ralph

I have reviewed the documents and consider the proposal to be satisfactory from Singleton Councils perspective.

Regards
Mark

Mark Ihlein
Director Planning and Infrastructure
Singleton Council



From: Ralph.Northey@glencore.com.au [mailto:Ralph.Northey@glencore.com.au]
Sent: Friday, 4 November 2016 1:23 PM
To: Ihlein, Mark
Subject: Revision of the Bulga Coal Visual Impact Management Plan

Hi Mark

You may recall Tim and Aaron consulting with the Singleton Council about our Visual Impact Management Plan (VIMP) a bit over 12 months ago.

Our BOP approval condition 50 (below) required us to develop the plan in consultation with the SC which we did and the plan was approved. We have recently revised the design of our Noise and Visual Bund (NVB) the end result being a landform that has more topographical relief and retains some existing rehabilitation that we previously planned to be covered over. Attached is a copy of the revised VIMP. The revised NVB is shown in Figure 3 which shows the NVB still reaching full height in locations but greater topographical relief (30m) in between the high points. The previous NVB only provided 15m of topographical relief. The increased topographical relief of the revised NVB will result in a more natural looking landform.

Visual Impact Management Plan

50. The Applicant shall prepare and implement a Visual Impact Management Plan for the development to the satisfaction of the Secretary. This plan must:
- (a) be prepared in consultation with Council, and submitted to the Secretary for approval within 6 months of the date of this consent;
 - (b) include the detailed plans for:
 - Noise & Visual Bund; and
 - visual screening along the Broke Road realignment;
 - (c) describe the measures that would be implemented to minimise the visual and lighting impacts of the development; and
 - (d) include a program to monitor and report on the implementation of the detailed plans and the effectiveness of the proposed visual and lighting mitigation measures.

Noises and visual impact assessments of the revised NVB have been undertaken (I will send these on in Separate e-mails). The noise modelling concludes that the zone of affectation remains relatively unchanged.

The visual impact assessment concluded that the "visual amenity would be largely unaffected by the proposed changes in the Broke, Milbrodale and Fordwich areas and some area may experience a slight improvement in visual amenity due to reduced height of the Noise and Visual Bund and increased topographic variability in the final landform.". The assessment also concluded that "Certain viewing locations to the west along Putty Road may be able to see elevated areas of the in-pit emplacement area as a result of the reduced Noise and Visual Bund height; these views are likely to be screened as trees on the Noise and Visual Bund become established. Overall, there is unlikely to be any noticeable difference in visual amenity at this location relative to what was assessed in the BOP Revised Project Report."

We believe that the revised NVB is a good outcome for both the community and Bulga Coal and have presented this information at our recent CCC (26 October unfortunately Godfrey Adamthwaite couldn't make it) and Community BBQ's in Bulga (26 Oct, 65 people) and Broke (27 Oct, 60 people) with no issues raised.

I would be happy to meet with you and whoever else you see as appropriate to further explain the proposed changes if required.

I will call to discuss.

Kind regards

Ralph Northey
Environment and Community Manager
Bulga Coal Complex
Ph: 02 6570 2539 Mob: 0418 439 874

LEGAL DISCLAIMER. The contents of this electronic communication and any attached documents are strictly confidential and they may not be used or disclosed by someone who is not a named recipient.
If you have received this electronic communication in error please notify the sender by replying to this electronic communication inserting the word "misdirected" as the subject and delete this communication from your system.



Planning Services
Resource Assessments
Contact: Jessie Evans
Phone: 9274 6419
Email: jessie.evans@planning.nsw.gov.au

Ralph Northey
Environment and Community Manager
Bulga Coal Complex
PMB 8
SINGLETON NSW 2330

Dear Mr  Northey

**Bulga Coal Complex (SSD 4960; DA 376-8-2003)
Management Plans**

The Department has reviewed the below revised management plans for the Bulga Coal Complex, which have been prepared in accordance with the Bulga Optimisation Project development consent (SSD 4960) and the Bulga Underground development consent (DA 376-8-2003):

- Noise Management Plan (dated April 2017) (condition 7 of Schedule 3 of SSD 4960 and condition 32C of Schedule 4 of DA 376-8-2003), including the Noise Management Procedure (dated March 2017);
- Biodiversity Management Plan (dated April 2017) (condition 34 of Schedule 3 of SSD 4960 and condition 44 of Schedule 4 of DA 376-8-2003), including the Wollombi Brook Biodiversity Conservation Area Management Plan, Reedy Valley Biodiversity Offset Management Plan, Condran Biodiversity Offset Management Plan and Weeping Myall Biodiversity Offset Management Plan;
- Visual Impact Management Plan (undated) (condition 50 of Schedule 3 of SSD 4960); and
- Aboriginal Cultural Heritage Management Plan (undated) (condition 42 of Schedule 3 of SSD 4960 and condition 38 of Schedule 4 of DA 376-8-2003), including the Wollombi Brook Conservation Area Plan of Management.

The Department notes that the above management plans were revised to address comments from the Department dated 3 October 2017. I wish to advise that the Secretary approves the Biodiversity, Aboriginal Cultural Heritage and Visual Impact management plans subject to administrative changes being made before the plans are placed on your website (see **Attachment A**). Please provide a final version of these plans to the Department at your earliest convenience and place a copy of them on your website.

The Department considers that the Noise Management Plan has not adequately addressed the Department's previous comments (see **Attachment A**). The Department therefore requests that this document is re-submitted by **15 December 2017**.

Should you have any enquiries in relation to this matter, please contact Jessie Evans on the details above.

Yours sincerely,



Howard Reed
Director
Resource Assessments
as nominee of the Secretary

Department of Planning and Environment
320 Pitt Street Sydney NSW 2000 | GPO Box 39 Sydney NSW 2001 | www.planning.nsw.gov.au

Number: BULCX-2103827161-5568 Status: Approved Effective: 19/07/2021
Owner: Coordinator - Environment & Community Version: 6.0 Review: 19/07/2026

Page 25 of 43



Resource Assessments
Planning Services Division

Contact: Philip Nevill
Phone: 8275 1036
Email: philip.nevill@planning.nsw.gov.au

Ralph Northey
Environment and Community Manager
Bulga Coal Complex
PMB 8
Singleton NSW 2330

Dear Mr Northey

**Bulga Optimisation Project (SSD 4960)
Visual Impact Management Plan**

The Department has reviewed the revised Visual Impact Management Plan (version 4), which has been prepared in accordance with condition 50 of Schedule 3 of the above development consent and submitted for review following the approval of Bulga Optimisation Project - Modification 2.

The Department is satisfied that it meets the requirements of condition 50. As such, the Secretary approves this plan. Please provide a final version of this document to the Department at your earliest convenience and place a copy of it on your website.

Should you have any enquiries in relation to this matter, please contact Philip Nevill on the details above.

Yours sincerely,

A handwritten signature in blue ink that reads 'J Evans' followed by the date '3/4/2019'.

Jessie Evans
A/Director Resource Assessments
as the Secretary's nominee



Planning,
Industry &
Environment

Ralph Northey
Environment and Community Manager
Bulga Coal
567 Broke Rd
Singleton, NSW, 2330

30/06/2021

Dear Mr. Northey

**Bulga Coal Complex Visual Impact Management Plan
Bulga Coal Complex (SSD-4960) and Bulga Underground Mine (376-8-2003)**

I refer to the Bulga Coal Visual Impact Management Plan, which was submitted in accordance with Condition 50 of Schedule 3 of the consent for the Bulga Optimisation Project (SSD-4960).

The Department has carefully reviewed the document and is satisfied that it is consistent with the relevant conditions of consent.

Accordingly, the Planning Secretary has approved the Bulga Coal Complex Visual Impact Management Plan (Revision 6, Dated May 2021). Please ensure that the approved plan is placed on the project website at the earliest convenience.

If you wish to discuss the matter further, please contact Daniel Martin at daniel.martin@dpie.nsw.gov.au

Yours sincerely

A handwritten signature in black ink, appearing to read 'M Sprott'.

Matthew Sprott
Director
Resource Assessments
as nominee of the Planning Secretary

Appendix B – Visual Assessment



Number: BULCX-2103827161-5568
Owner: Coordinator - Environment & Community

Status: Approved
Version: 6.0

Effective: 19/07/2021
Review: 19/07/2026



Legend

- Active Overburden Emplacement Area
- Inactive Overburden Emplacement Area
- Rehabilitation Area Temporary
- Rehabilitation Area

File Name: [A3] 803/4100_123.dwg
20190528 14:57

FIGURE 11
Visual Montage
Bulga Community Centre



Legend
 Active Overburden Emplacement Area
 Rehabilitation Area

File Name [A3]: R03/4100_127.dgn
 20181019 10:37

FIGURE 1
Visual Montage
Hill Street



Legend
 Active Overburden Emplacement Area
 Inactive Overburden Emplacement Area
 Rehabilitation Area Temporary
 Rehabilitation Area
File Name: J:\31_80374100_119.dgn
 20190403 16:03

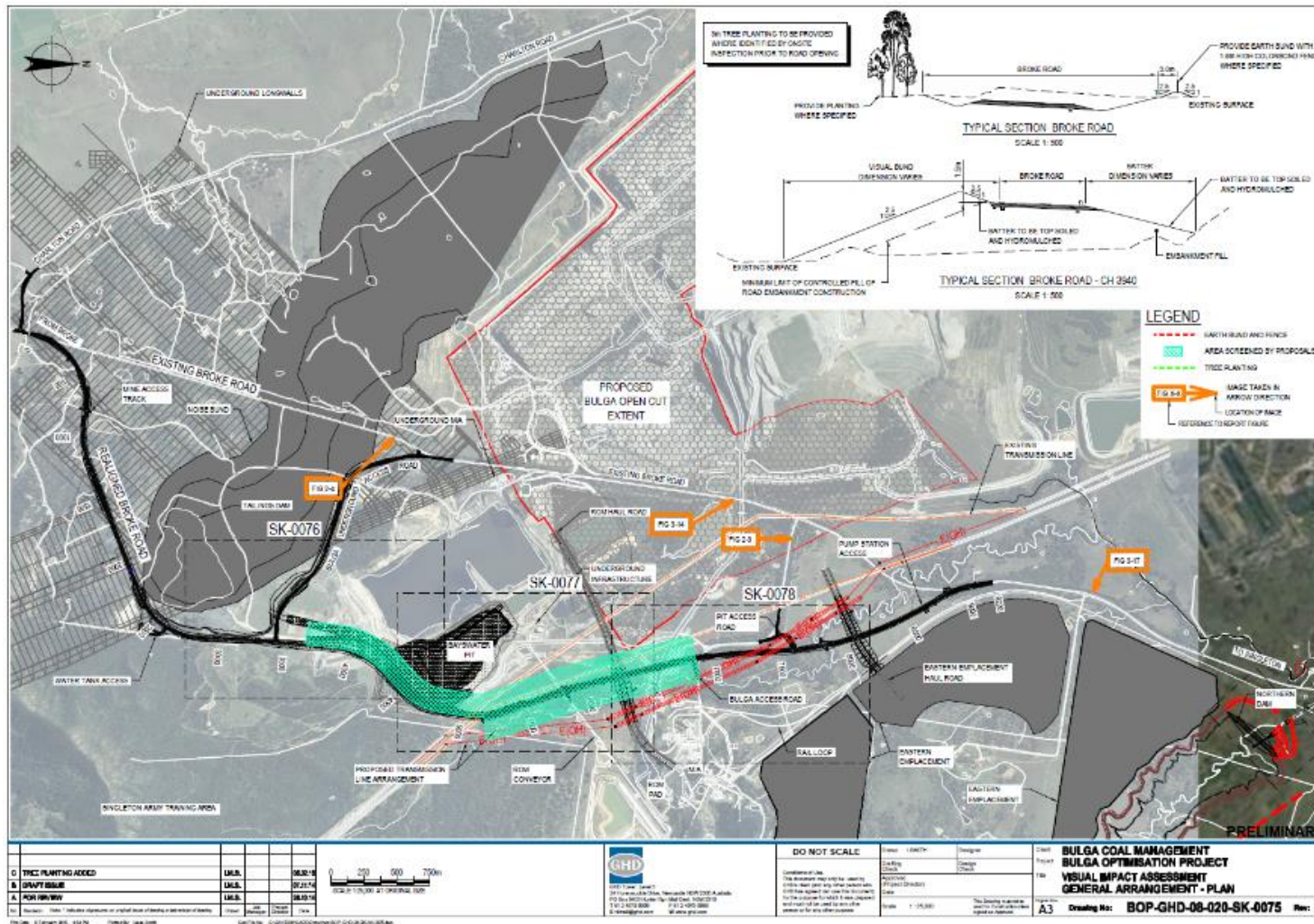
FIGURE 5
Visual Montage
Putty Road

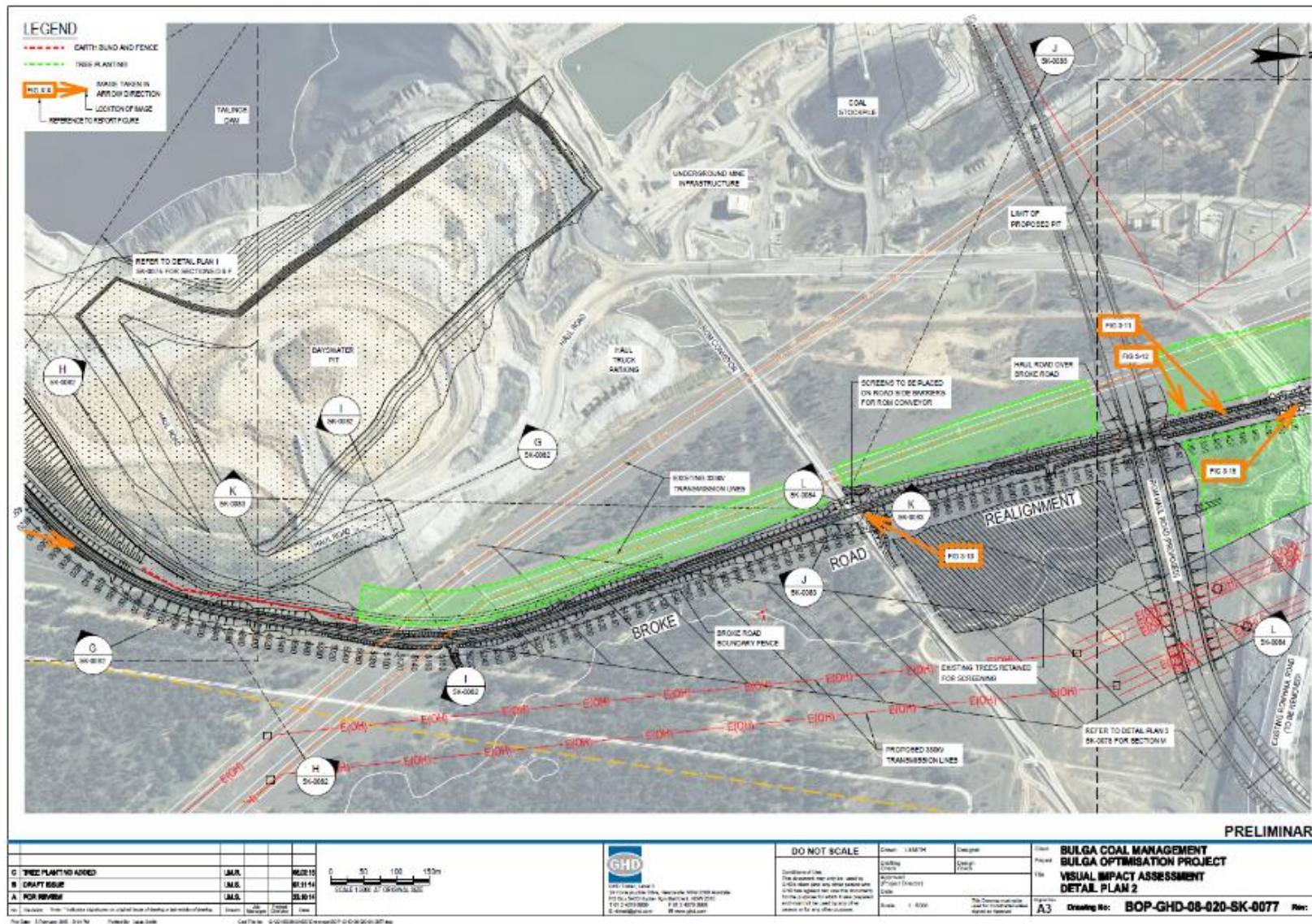


FIGURE 7
Visual Montage
Bulga Village

Legend
 Active Overburden Emplacement Area
 Rehabilitation Area Temporary
 Rehabilitation Area
 File Name: [A3]_R03/4100_121.dgn
 2019/04/03 16:10

Appendix C – Broke Road Visual Management Controls

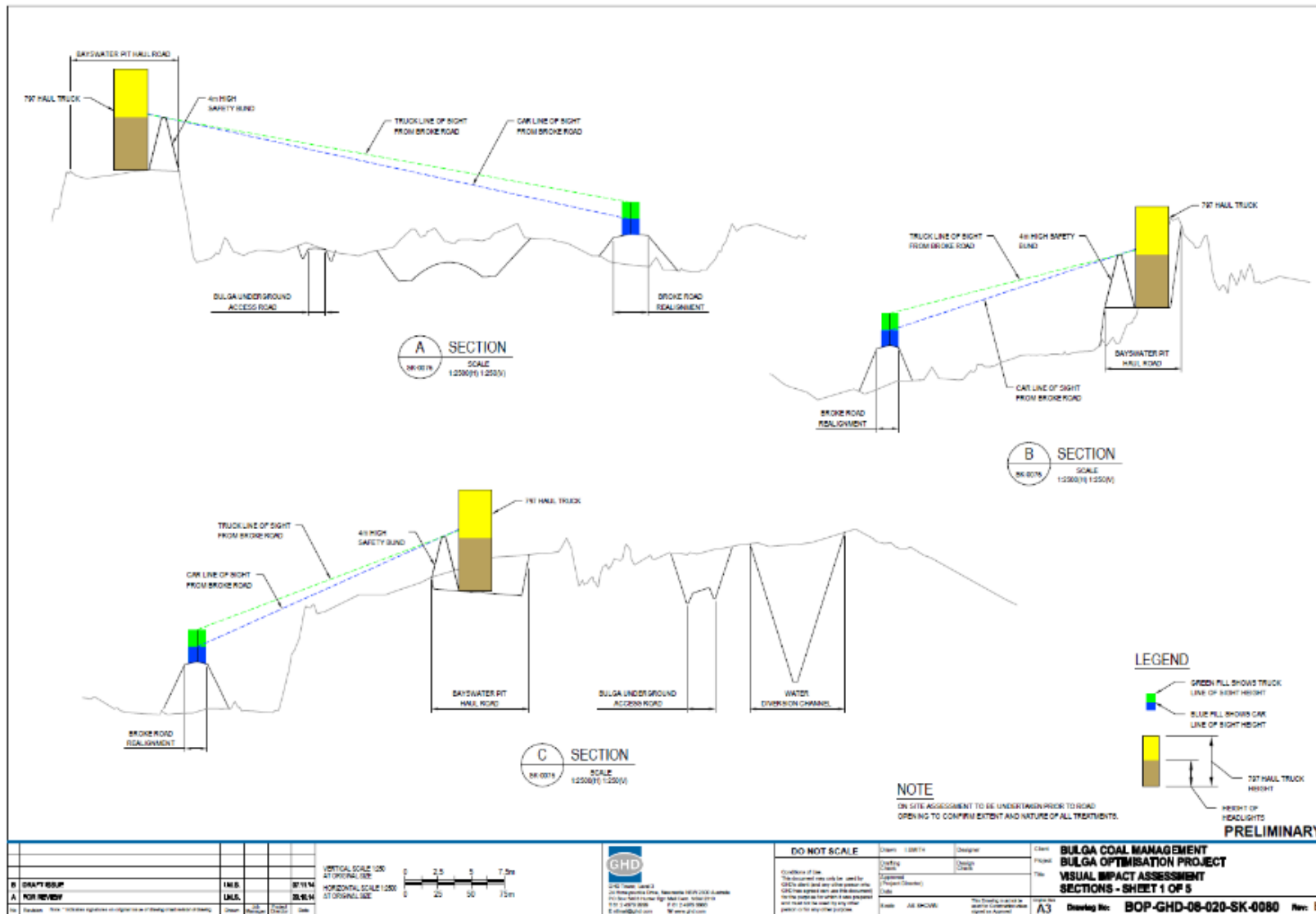


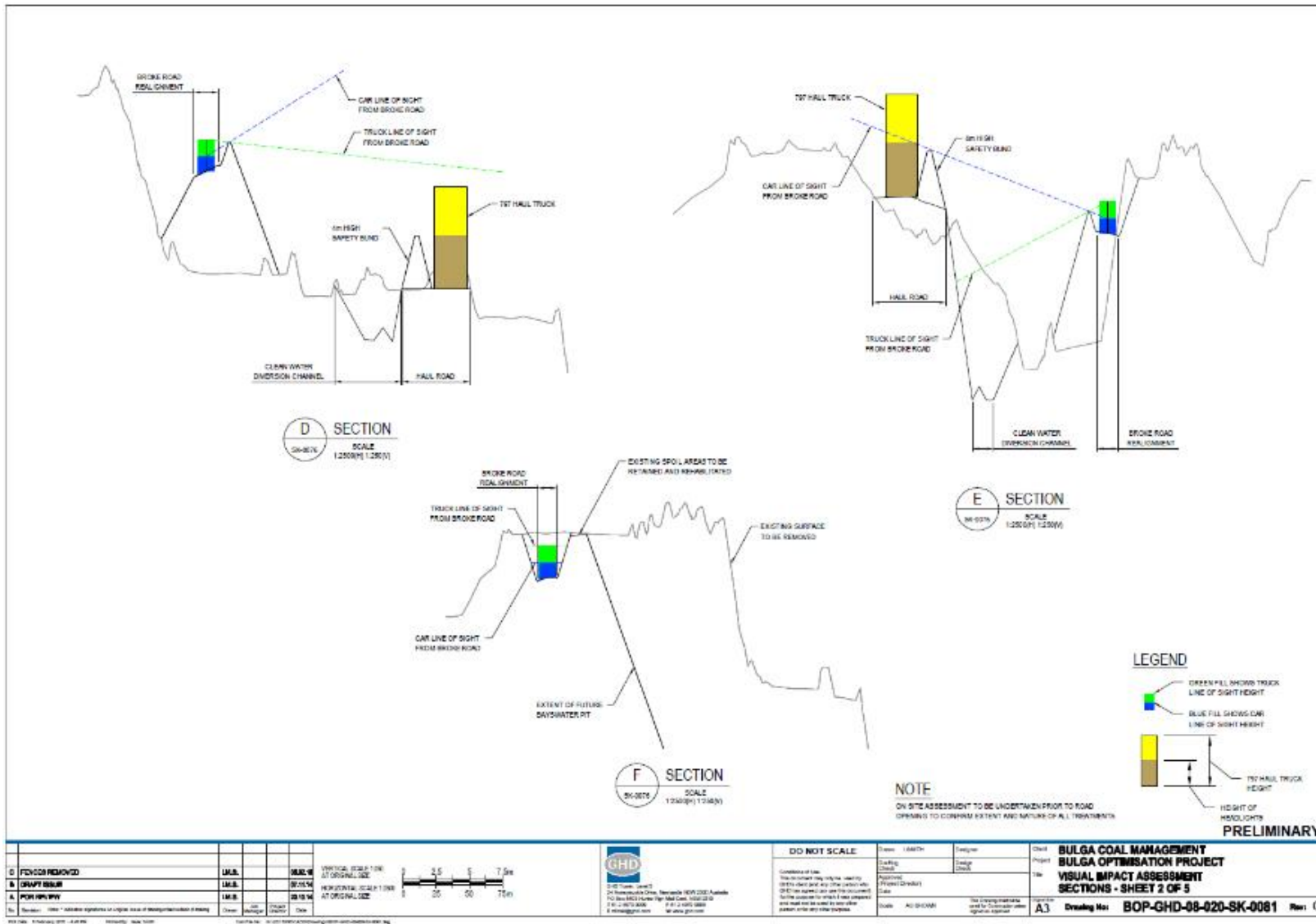


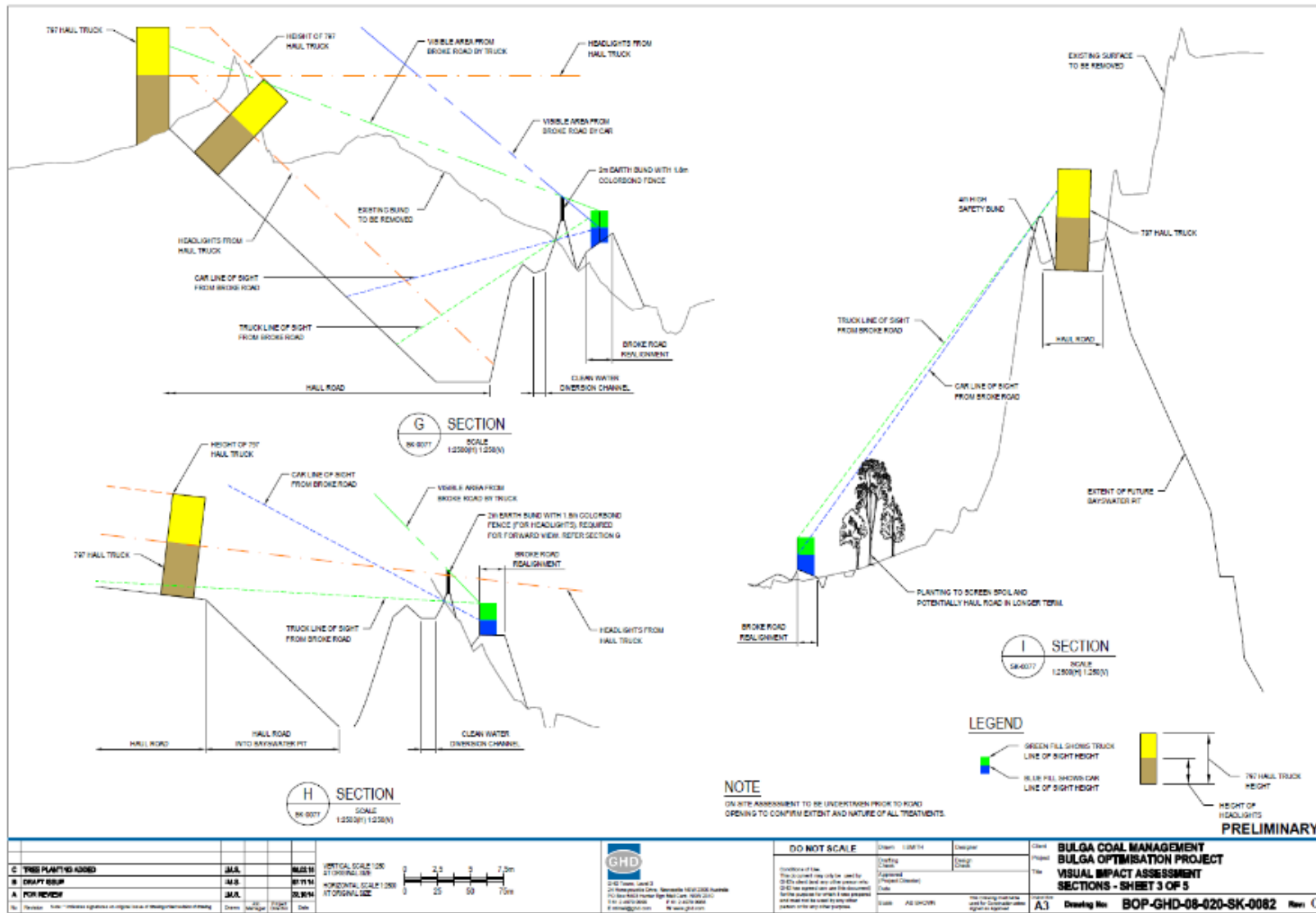
Number: BULCX-2103827161-5568
Owner: Coordinator - Environment & Community

Status: Approved
Version: 6.0

Effective: 19/07/2021
Review: 19/07/2026



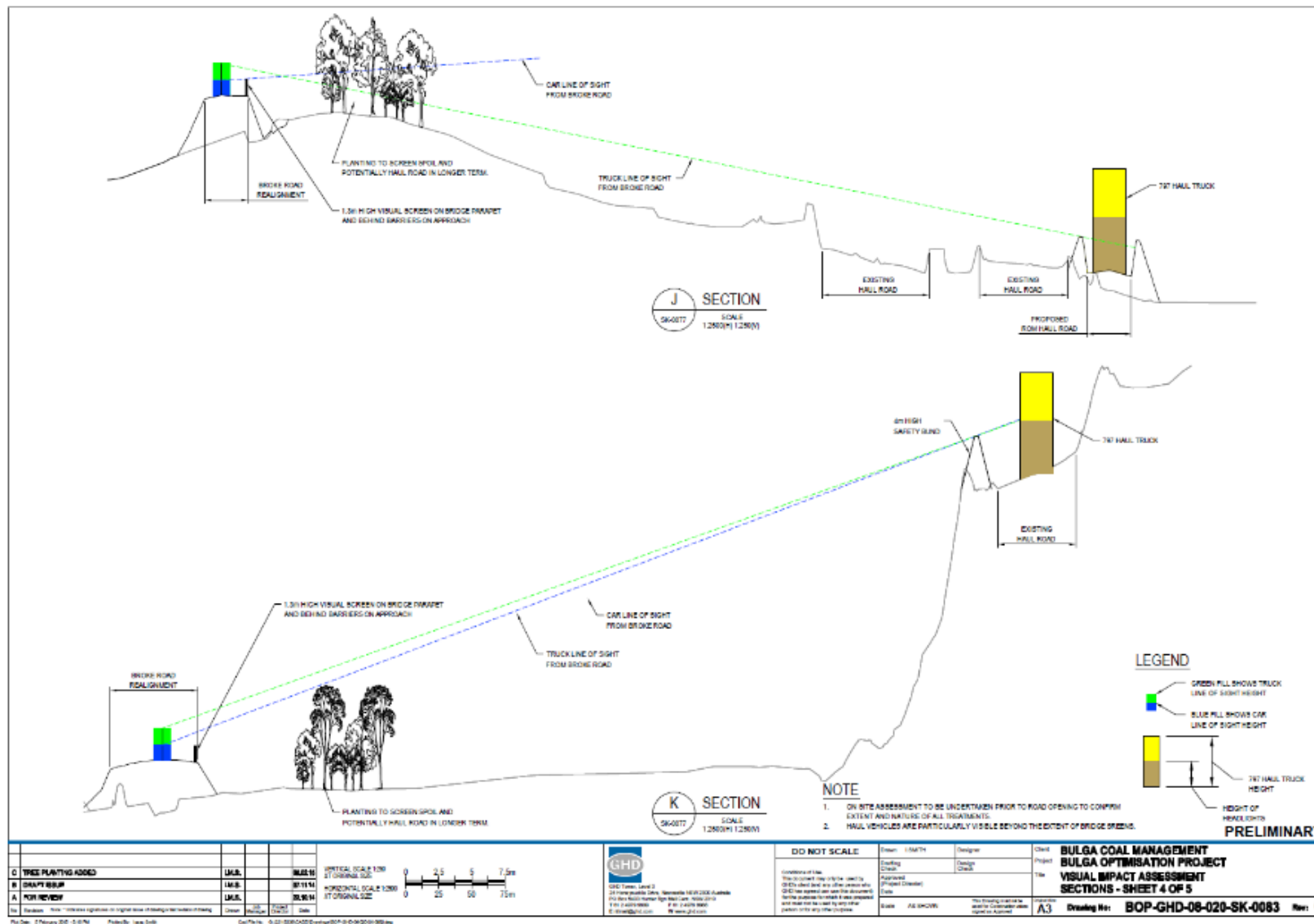


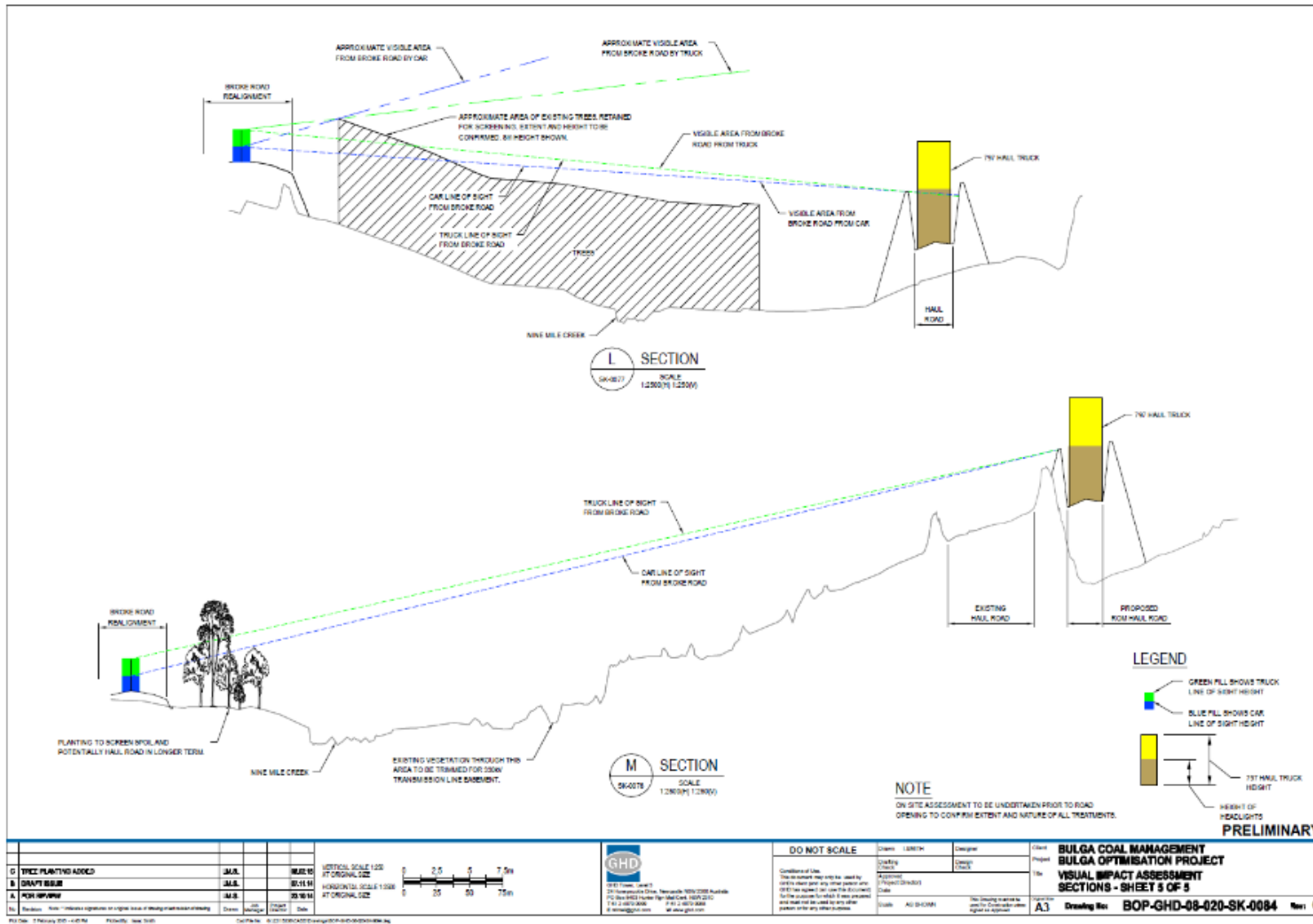


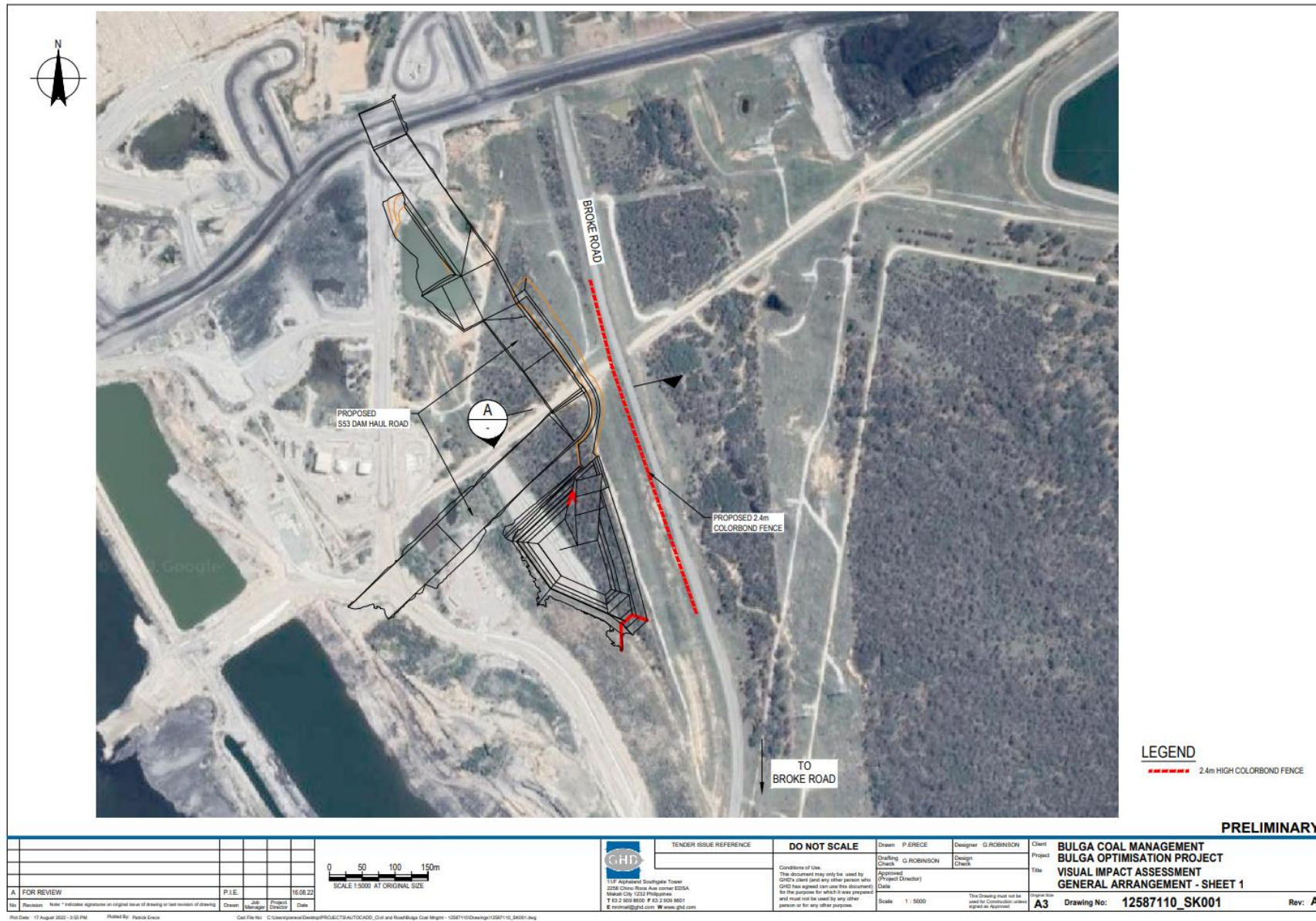
Number: BULCX-2103827161-5568
Owner: Coordinator - Environment & Community

Status: Approved
Version: 6.0

Effective: 19/07/2021
Review: 19/07/2026



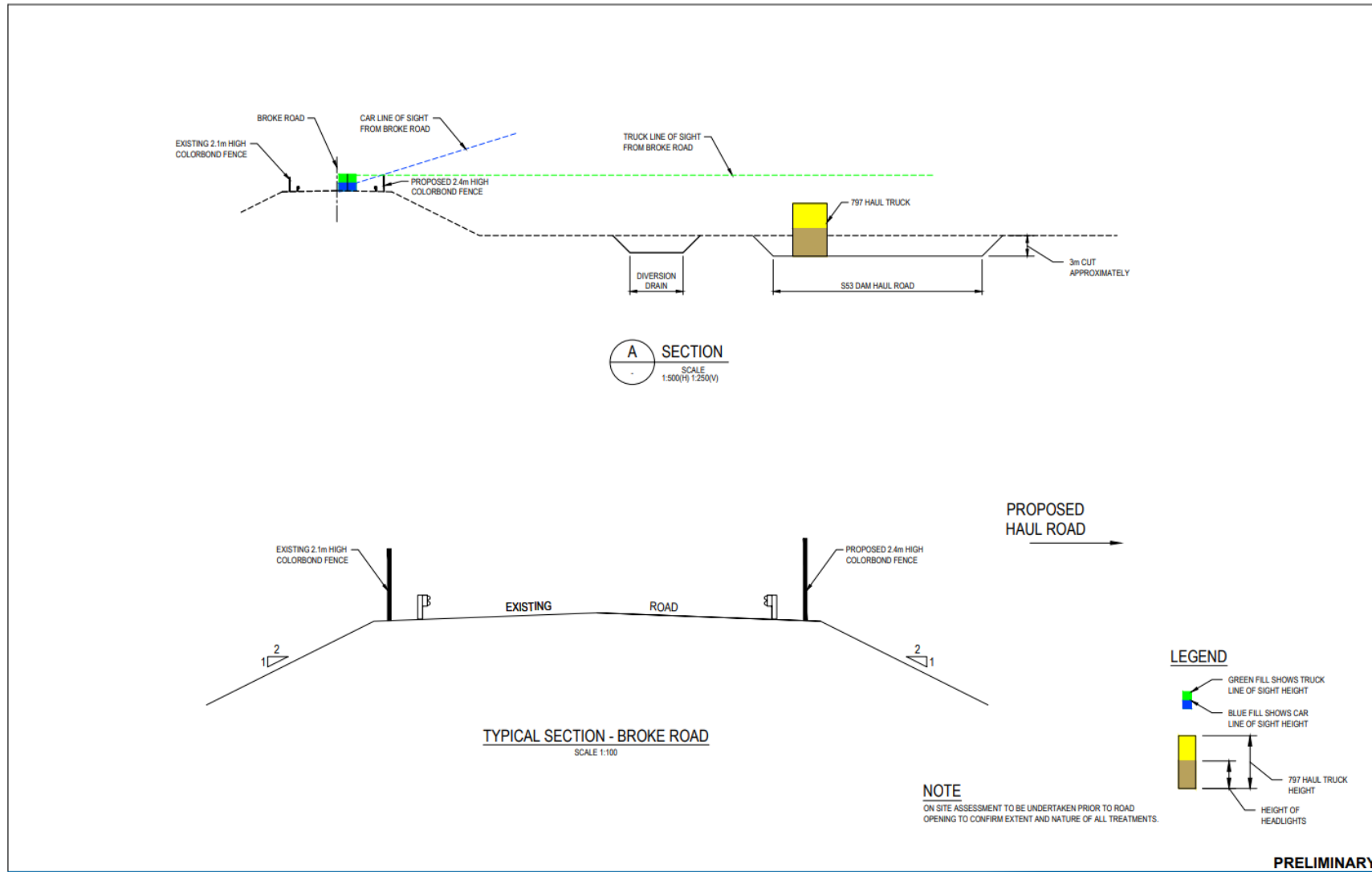




Number: BULCX-2103827161-5568
Owner: Coordinator - Environment & Community

Status: Approved
Version: 6.0

Effective: 19/07/2021
Review: 19/07/2026



PRELIMINARY

VERTICAL SCALE 1:100 AT ORIGINAL SIZE HORIZONTAL SCALE 1:500 AT ORIGINAL SIZE						TENDER ISSUE REFERENCE DO NOT SCALE		Drawn: P.ERECE Drafting: G.ROBINSON Approved: (Project Director) Date:		Designer: G.ROBINSON Design Check:		Client: BULGA COAL MANAGEMENT Project: PROPOSED S53 DAM HAUL ROAD File: VISUAL IMPACT ASSESSMENT SECTIONS - SHEET 2	
A FOR REVIEW Note: * Indicates signatures on original issue of drawing or last revision of drawing		P.I.E. 16.08.22		118 Alameda Southgate Tower 2228 Crown Road Ave. corner CDSA Makati City 1202 Philippines T 63 2 959 8600 F 63 2 959 8601 E info@ghd.com W www.ghd.com		Conditions of Use: This document may only be used by GHD's client (and any other person who GHD has agreed can use this document) for the purposes for which it was prepared and must not be used by any other person or for any other purposes.		Scale: AS SHOWN This Drawing must not be used for Construction unless signed and approved		Drawing No: 12587110_SK002		Rev: A	