

L49	Roof	170.000	RL	▽
L48M		167.000	RL	▽
L48		163.055	RL	▽
L47		159.510	RL	▽
L46		155.980	RL	▽
L45		152.630	RL	▽
L44		149.455	RL	▽
L43		146.280	RL	▽
L42		143.105	RL	▽
L41		139.930	RL	▽
L40		136.755	RL	▽
L39		133.580	RL	▽
L38		130.405	RL	▽
L37		127.230	RL	▽
L36		124.055	RL	▽
L35		120.880	RL	▽
L34		117.705	RL	▽
L33		114.530	RL	▽
L32		111.355	RL	▽
L31		108.180	RL	▽
L30		105.005	RL	▽
L29		101.830	RL	▽
L28		98.655	RL	▽
L27		95.480	RL	▽
L26		92.305	RL	▽
L25		89.130	RL	▽
L24		85.955	RL	▽
L23		82.780	RL	▽
L22		79.605	RL	▽
L21		76.430	RL	▽
L20		73.255	RL	▽
L19		70.080	RL	▽
L18		66.905	RL	▽
L17		63.730	RL	▽
L16		60.555	RL	▽
L15		57.380	RL	▽
L14		54.205	RL	▽
L13		51.030	RL	▽
L12		47.855	RL	▽
L11		44.680	RL	▽
L10		41.505	RL	▽
L09		38.330	RL	▽
L08		35.155	RL	▽
L07		31.980	RL	▽
L06		28.805	RL	▽
L05		24.225	RL	▽
L04		20.200	RL	▽
L03		16.350	RL	▽
L02		12.500	RL	▽
L01		8.400	RL	▽
L00		3.500	RL	▽
LG		3.300	RL	▽
B01		0.050	RL	▽
B02		-2.800	RL	▽
B03		-5.650	RL	▽
B04		-8.500	RL	▽
B05		-11.150	RL	▽

NOTES

1. Do not scale drawing. Written dimensions govern
2. All dimensions are in millimeters unless noted otherwise
3. All dimensions shall be verified on site before proceeding with the work. Snohetta + Hassell shall be notified in writing of any discrepancies.
4. This drawing must be read in conjunction with all relevant contracts, specifications and drawings

This drawing is an uncontrolled copy. Unless noted otherwise
© Copyright of this drawing is vested in Snohetta and Hassell

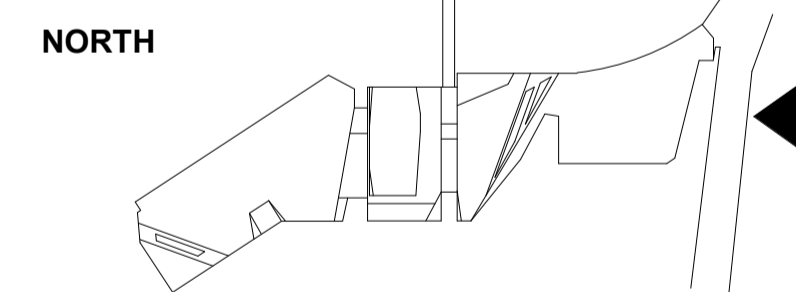
REV	DESCRIPTION	DATE
A	FOR SSDA2 APPROVAL	02/11/2022
B	For SSDA2 RTS	03/10/2023
C	S4.55 MODIFICATION 1	22/02/2024
D	S4.55 MODIFICATION 1	01/05/2024
E	S4.55 MODIFICATION 2	06/06/2024
F	S4.55 MODIFICATION 2	19/12/2024

LEGEND

- ENVELOPE
- SSDA EXTENTS
- OPERABLE AWNING WINDOW
- BALCONY

GENERAL INFORMATION

- TOWER FACADE MATERIALITY**
1. The tower facade system includes curtain wall aluminium framing, fixed clear vision glass, clear vision glass awning windows, colour back glass spandrel panels, clear glass balustrades, and integral vertical and horizontal shading fins.
- PODIUM FACADE MATERIALITY**
1. The podium curtain wall modules are composed of glazing with spandrel panels comprised of GRC (or similar) and colourback glazing with fritting.
2. The facade is shaded with GRC or similar sunshades which vary in depth based on solar orientation.
3. Ground floor facades are comprised of operable shopfront glazing with varying finishes to individual tenancies.



1 GA - North Elevation
1:500

CLIENT
500 mirvac

PROJECT
HARBOURSIDE
2-10 Darling Drive, Sydney, NSW, 2000

DRAWING TITLE
General Arrangement - North Elevation

REVIEWED MI	SCALE @ A1 1 : 500
APPROVED KK	PROJECT NO. 016152-61A-P
DRAWING NO. AR-SSDA2- 2000_00	REV NO. F

NOTES

- Do not scale drawing. Written dimensions govern
- All dimensions are in millimeters unless noted otherwise
- All dimensions shall be verified on site before proceeding with the work. Snohetta + Hassell shall be notified in writing of any discrepancies.
- This drawing must be read in conjunction with all relevant contracts, specifications and drawings

This drawing is an uncontrolled copy. Unless noted otherwise
© Copyright of this drawing is vested in Snohetta and Hassell

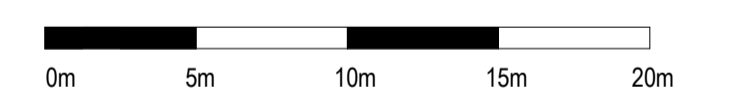
REV	DESCRIPTION	DATE
A	FOR SSDA2 APPROVAL	02/11/2022
B	For SSDA2 RTS	03/10/2023
C	S4.55 MODIFICATION 1	22/02/2024
D	S4.55 MODIFICATION 2	01/05/2024
E	S4.55 MODIFICATION 2	06/06/2024
F	S4.55 MODIFICATION 2	19/12/2024

LEGEND	DESCRIPTION
	ENVELOPE
	SSDA EXTENTS
	OPERABLE AWNING WINDOW
	BALCONY

NOTE: REFER MATERIAL SCHEDULE FOR DEFINITIONS OF MATERIAL TAGS

NORTH

SCALE



CLIENT



PROJECT

HARBOURSIDE
2-10 Darling Drive, Sydney, NSW, 2000

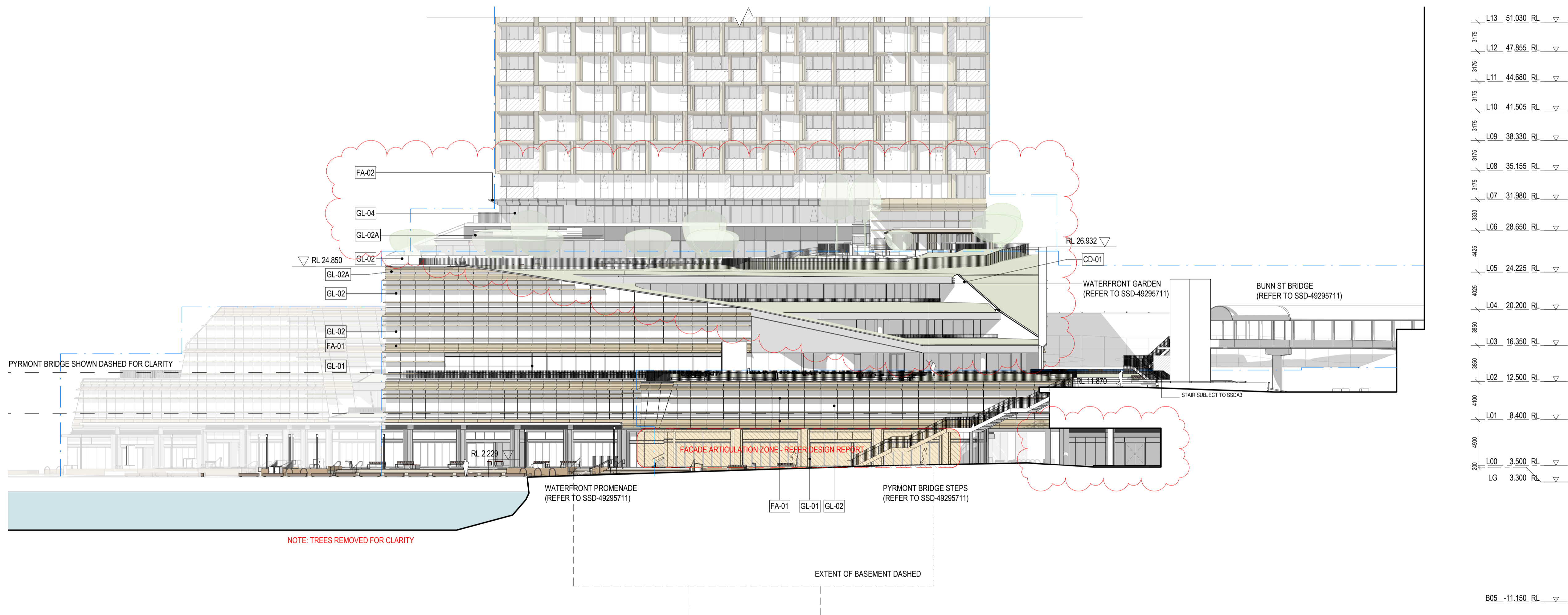
DRAWING TITLE

General Arrangement - North Elevation - Part 1

REVIEWED	SCALE @ A1
MI	1 : 250
APPROVED	PROJECT NO.
KK	016152-61A-P
DRAWING NO.	REV NO.
AR-SSDA2- 2000_01	F

FOR CONTINUATION REFER TO DRAWING No. 2000_02

NOTE: ANYTHING SHOWN BEYOND MATCHLINE SHOULD NOT BE USED AS PART OF THIS DRAWING.



1 GA - North Elevation Part 1
1:250

NOTES

- Do not scale drawing. Written dimensions govern
- All dimensions are in millimeters unless noted otherwise
- All dimensions shall be verified on site before proceeding with the work. Snohetta + Hassell shall be notified in writing of any discrepancies.
- This drawing must be read in conjunction with all relevant contracts, specifications and drawings

This drawing is an uncontrolled copy. Unless noted otherwise
© Copyright of this drawing is vested in Snohetta and Hassell

REV	DESCRIPTION	DATE
A	FOR SSDA2 APPROVAL	02/11/2022
B	For SSDA2 RTS	03/10/2023
C	S4.55 MODIFICATION 1	22/02/2024
D	S4.55 MODIFICATION 2	01/05/2024
E	S4.55 MODIFICATION 2	06/06/2024
F	S4.55 MODIFICATION 2	19/12/2024

LEGEND

- ENVELOPE
- SSDA EXTENTS
- OPERABLE AWNING WINDOW
- BALCONY

GENERAL INFORMATION

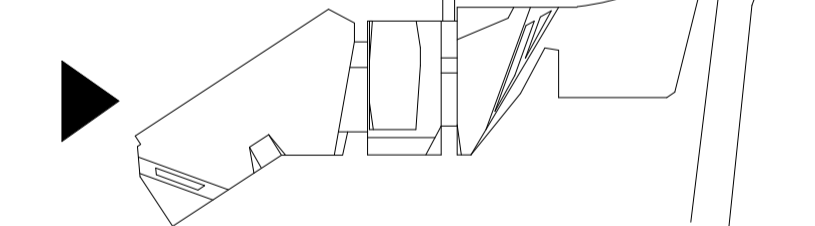
TOWER FACADE MATERIALITY
1. The tower facade system includes curtain wall aluminium framing, fixed clear vision glass, clear vision glass awning windows, colour back glass spandrel panels, clear glass balustrades, and integral vertical and horizontal shading fins.

PODIUM FACADE MATERIALITY
1. The podium curtain wall modules are composed of glazing with spandrel panels comprised of GRC (or similar) and colourback glazing with fritting.

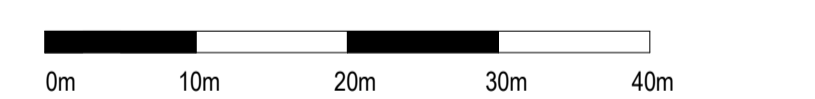
2. The facade is shaded with GRC or similar sunshades which vary in depth based on solar orientation.

3. Ground floor facades are comprised of operable shopfront glazing with varying finishes to individual tenancies.

NORTH



SCALE



CLIENT



PROJECT

HARBOURSIDE
2-10 Darling Drive, Sydney, NSW, 2000

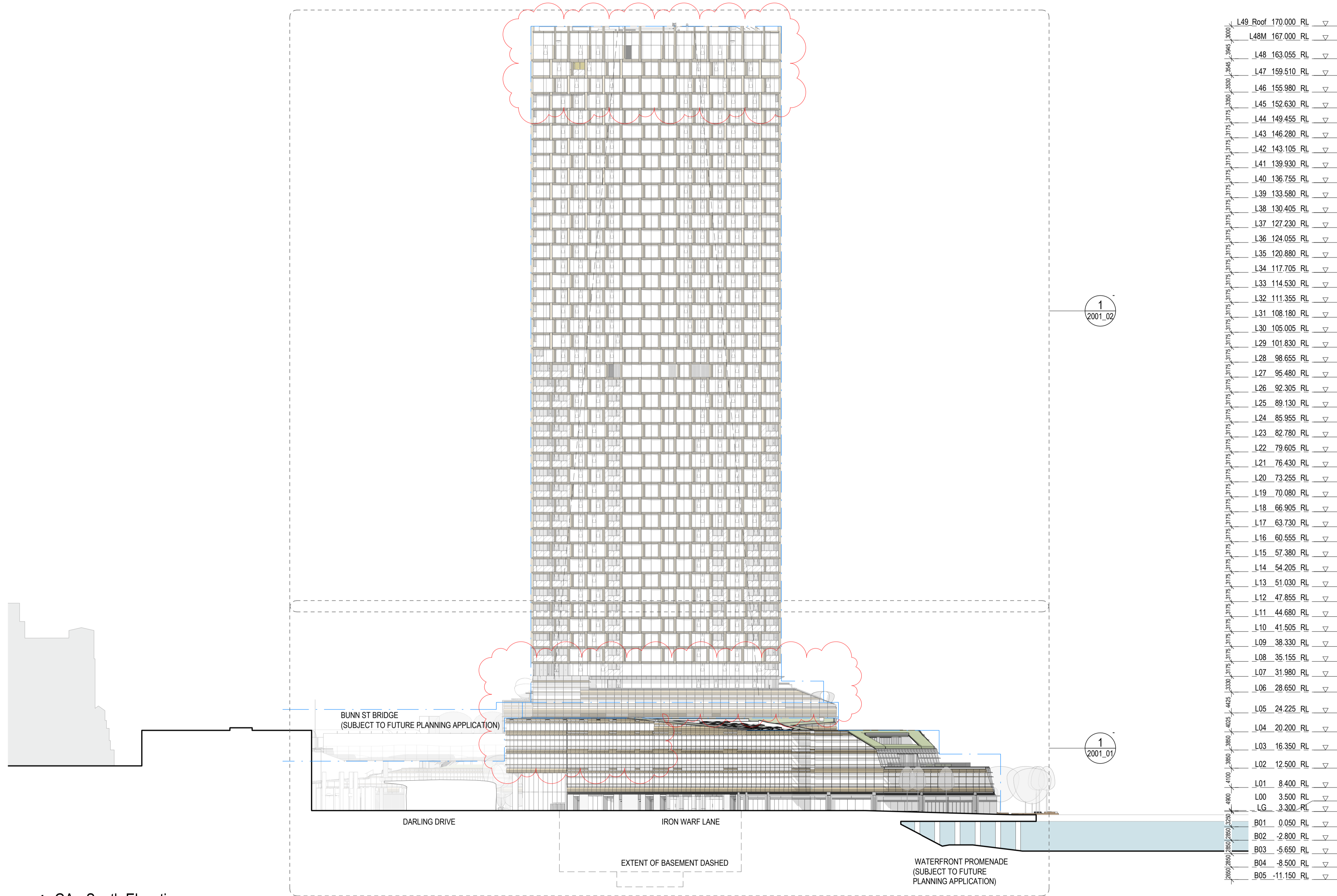
DRAWING TITLE

General Arrangement - South Elevation

REVIEWED MI SCALE @ A1 1 : 500

APPROVED KK PROJECT NO. 016152-61A-P

DRAWING NO. AR-SSDA2- 2001_00 REV NO. F

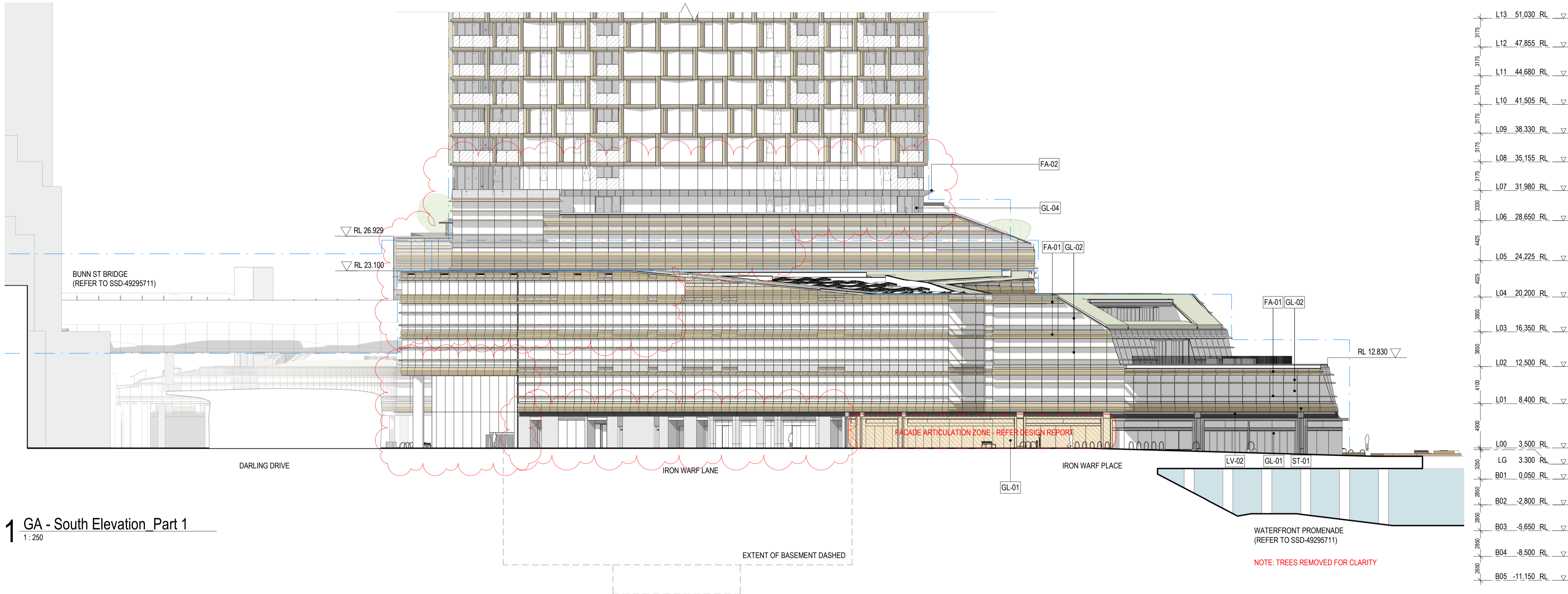


L49	Roof	170.000	RL	▽
L48M		167.000	RL	▽
L48		163.055	RL	▽
L47		159.510	RL	▽
L46		155.980	RL	▽
L45		152.630	RL	▽
L44		149.455	RL	▽
L43		146.280	RL	▽
L42		143.105	RL	▽
L41		139.930	RL	▽
L40		136.755	RL	▽
L39		133.580	RL	▽
L38		130.405	RL	▽
L37		127.230	RL	▽
L36		124.055	RL	▽
L35		120.880	RL	▽
L34		117.705	RL	▽
L33		114.530	RL	▽
L32		111.355	RL	▽
L31		108.180	RL	▽
L30		105.005	RL	▽
L29		101.830	RL	▽
L28		98.655	RL	▽
L27		95.480	RL	▽
L26		92.305	RL	▽
L25		89.130	RL	▽
L24		85.955	RL	▽
L23		82.780	RL	▽
L22		79.605	RL	▽
L21		76.430	RL	▽
L20		73.255	RL	▽
L19		70.080	RL	▽
L18		66.905	RL	▽
L17		63.730	RL	▽
L16		60.555	RL	▽
L15		57.380	RL	▽
L14		54.205	RL	▽
L13		51.030	RL	▽
L12		47.855	RL	▽
L11		44.680	RL	▽
L10		41.505	RL	▽
L09		38.330	RL	▽
L08		35.155	RL	▽
L07		31.980	RL	▽
L06		28.805	RL	▽
L05		24.225	RL	▽
L04		20.200	RL	▽
L03		16.350	RL	▽
L02		12.500	RL	▽
L01		8.400	RL	▽
L00		3.500	RL	▽
LG		-3.300	RL	▽
B01		0.050	RL	▽
B02		-2.800	RL	▽
B03		-5.650	RL	▽
B04		-8.500	RL	▽
B05		-11.150	RL	▽

1 GA - South Elevation
1:500

FOR CONTINUATION REFER TO DRAWING No. 2001_02

NOTE: ANYTHING SHOWN BEYOND MATCHLINE SHOULD NOT BE USED AS PART OF THIS DRAWING.



NOTES

1. Do not scale drawing. Written dimensions govern
2. All dimensions are in millimeters unless noted otherwise
3. All dimensions shall be verified on site before proceeding with the work. Snohetta + Hassell shall be notified in writing of any discrepancies.
4. This drawing must be read in conjunction with all relevant contracts, specifications and drawings

This drawing is an uncontrolled copy. Unless noted otherwise
© Copyright of this drawing is vested in Snohetta and Hassell

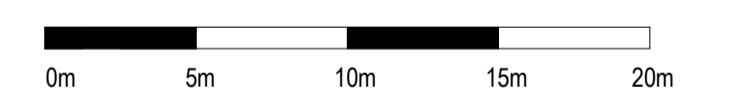
REV	DESCRIPTION	DATE
A	FOR SSDA2 APPROVAL	02/11/2022
B	For SSDA2 RTS	03/10/2023
C	S4.55 MODIFICATION 1	22/02/2024
D	S4.55 MODIFICATION 1	01/05/2024
E	S4.55 MODIFICATION 2	06/06/2024
F	S4.55 MODIFICATION 2	19/12/2024

LEGEND	
	ENVELOPE
	SSDA EXTENTS
	OPERABLE AWNING WINDOW
	BALCONY

NOTE: REFER MATERIAL SCHEDULE FOR DEFINITIONS OF MATERIAL TAGS

NORTH

SCALE



CLIENT



PROJECT

HARBOURSIDE
2-10 Darling Drive, Sydney, NSW, 2000

DRAWING TITLE

General Arrangement - South Elevation - Part 1

REVIEWED MI	SCALE @ A1 1 : 250
APPROVED KK	PROJECT NO. 016152-61A-P
DRAWING NO. AR-SSDA2- 2001_01	REV NO. F

1 GA - South Elevation Part 1
1:250

NOTES

- Do not scale drawing. Written dimensions govern
- All dimensions are in millimeters unless noted otherwise
- All dimensions shall be verified on site before proceeding with the work. Snohetta + Hassell shall be notified in writing of any discrepancies.
- This drawing must be read in conjunction with all relevant contracts, specifications and drawings

This drawing is an uncontrolled copy. Unless noted otherwise
 © Copyright of this drawing is vested in Snohetta and Hassell

REV	DESCRIPTION	DATE
A	FOR SSDA2 APPROVAL	02/11/2022
B	FOR SSDA2 RTS	03/10/2023
C	S4.55 MODIFICATION 1	22/02/2024
D	S4.55 MODIFICATION 1	01/05/2024
E	S4.55 MODIFICATION 2	06/06/2024
F	S4.55 MODIFICATION 2	19/12/2024

LEGEND

- ENVELOPE
- SSDA EXTENTS
- OPERABLE AWNING WINDOW
- BALCONY

GENERAL INFORMATION

TOWER FACADE MATERIALITY

1. The tower facade system includes curtain wall aluminium framing, fixed clear vision glass, clear vision glass awning windows, colour back glass spandrel panels, clear glass balustrades, and integral vertical and horizontal shading fins.

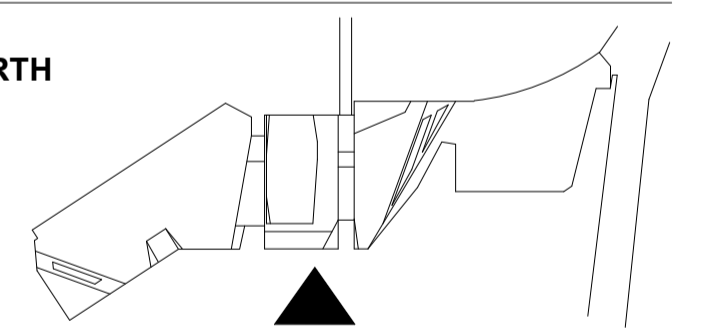
PODIUM FACADE MATERIALITY

1. The podium curtain wall modules are composed of glazing with spandrel panels comprised of GRC (or similar) and colourback glazing with fritting.

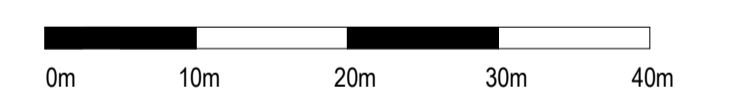
2. The facade is shaded with GRC or similar sunshades which vary in depth based on solar orientation.

3. Ground floor facades are comprised of operable shopfront glazing with varying finishes to individual tenancies.

NORTH



SCALE



CLIENT



PROJECT

HARBOURSIDE
 2-10 Darling Drive, Sydney, NSW, 2000

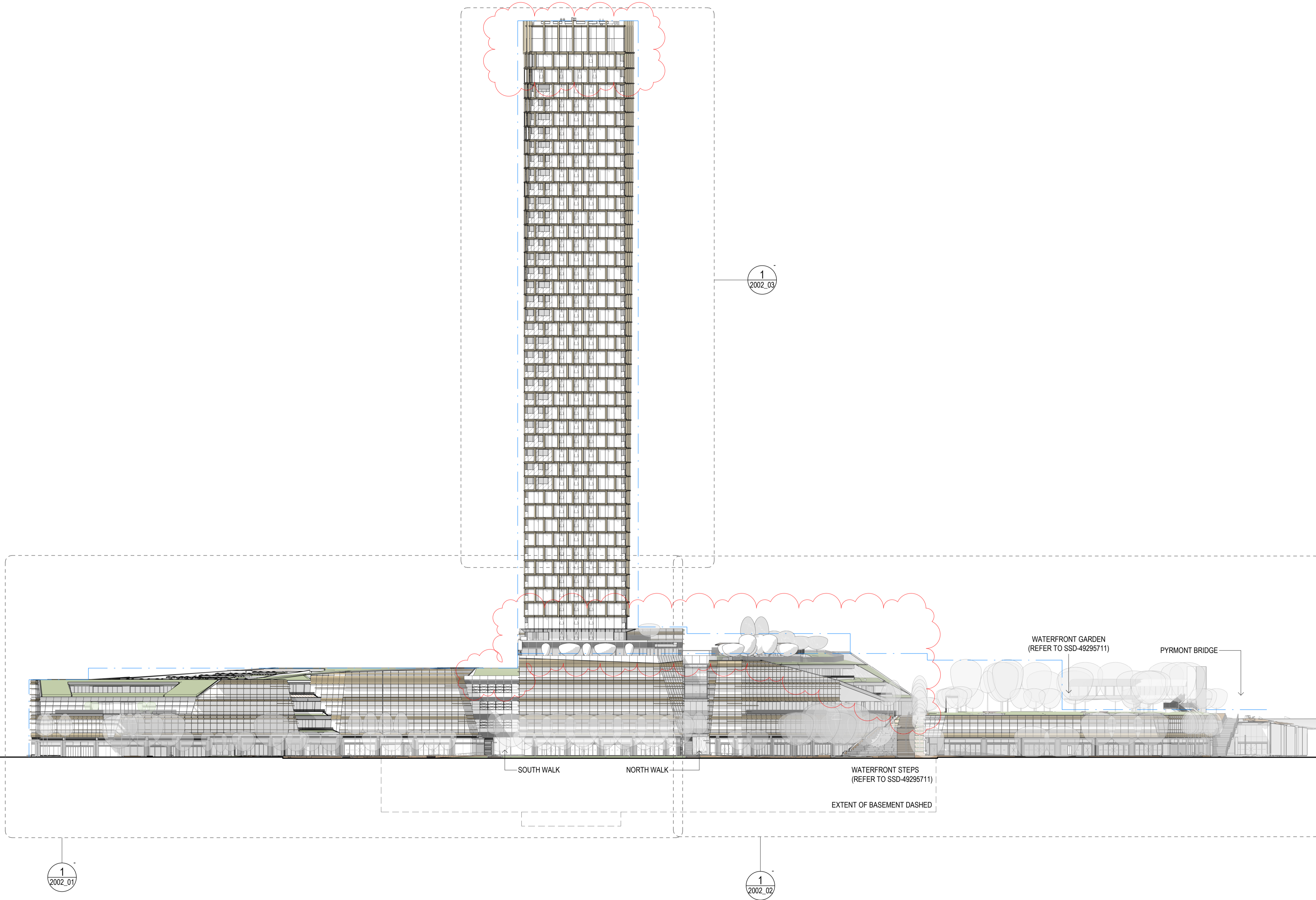
DRAWING TITLE

General Arrangement - East Elevation

REVIEWED MI SCALE @ A1 1 : 500

APPROVED KK PROJECT NO. 016152-61A-P

DRAWING NO. AR-SSDA2-2002_00 REV NO. F



L49_Roof	170.000	RL	▽
L48M	167.000	RL	▽
L48	163.055	RL	▽
L47	159.510	RL	▽
L46	155.980	RL	▽
L45	152.630	RL	▽
L44	149.455	RL	▽
L43	146.280	RL	▽
L42	143.105	RL	▽
L41	139.930	RL	▽
L40	136.755	RL	▽
L39	133.580	RL	▽
L38	130.405	RL	▽
L37	127.230	RL	▽
L36	124.055	RL	▽
L35	120.880	RL	▽
L34	117.705	RL	▽
L33	114.530	RL	▽
L32	111.355	RL	▽
L31	108.180	RL	▽
L30	105.005	RL	▽
L29	101.830	RL	▽
L28	98.655	RL	▽
L27	95.480	RL	▽
L26	92.305	RL	▽
L25	89.130	RL	▽
L24	85.955	RL	▽
L23	82.780	RL	▽
L22	79.605	RL	▽
L21	76.430	RL	▽
L20	73.255	RL	▽
L19	70.080	RL	▽
L18	66.905	RL	▽
L17	63.730	RL	▽
L16	60.555	RL	▽
L15	57.380	RL	▽
L14	54.205	RL	▽
L13	51.030	RL	▽
L12	47.855	RL	▽
L11	44.680	RL	▽
L10	41.505	RL	▽
L09	38.330	RL	▽
L08	35.155	RL	▽
L07	31.980	RL	▽
L06	28.805	RL	▽
L05	24.225	RL	▽
L04	20.200	RL	▽
L03	16.350	RL	▽
L02	12.500	RL	▽
L01	8.400	RL	▽
L00	3.500	RL	▽
LG	3.300	RL	▽
B01	0.050	RL	▽
B02	-2.800	RL	▽
B03	-5.650	RL	▽
B04	-8.500	RL	▽
B05	-11.150	RL	▽

1 GA -East Elevation
 1 : 500

NOTES

- Do not scale drawing. Written dimensions govern
- All dimensions are in millimeters unless noted otherwise
- All dimensions shall be verified on site before proceeding with the work. Snohetta + Hassell shall be notified in writing of any discrepancies.
- This drawing must be read in conjunction with all relevant contracts, specifications and drawings

This drawing is an uncontrolled copy. Unless noted otherwise
 © Copyright of this drawing is vested in Snohetta and Hassell

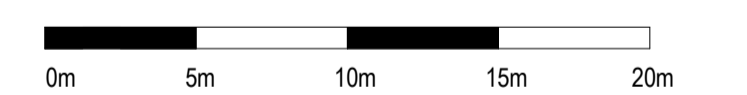
REV	DESCRIPTION	DATE
A	FOR SSDA2 APPROVAL	02/11/2022
B	For SSDA2 RTS	03/10/2023
C	S4.55 MODIFICATION 1	22/02/2024
D	S4.55 MODIFICATION 1	01/05/2024
E	S4.55 MODIFICATION 2	06/06/2024
F	S4.55 MODIFICATION 2	19/12/2024

LEGEND	
	ENVELOPE
	SSDA EXTENTS
	OPERABLE AWNING WINDOW
	BALCONY

NOTE: REFER MATERIAL SCHEDULE FOR DEFINITIONS OF MATERIAL TAGS

NORTH

SCALE



CLIENT



PROJECT

HARBOURSIDE
 2-10 Darling Drive, Sydney, NSW, 2000

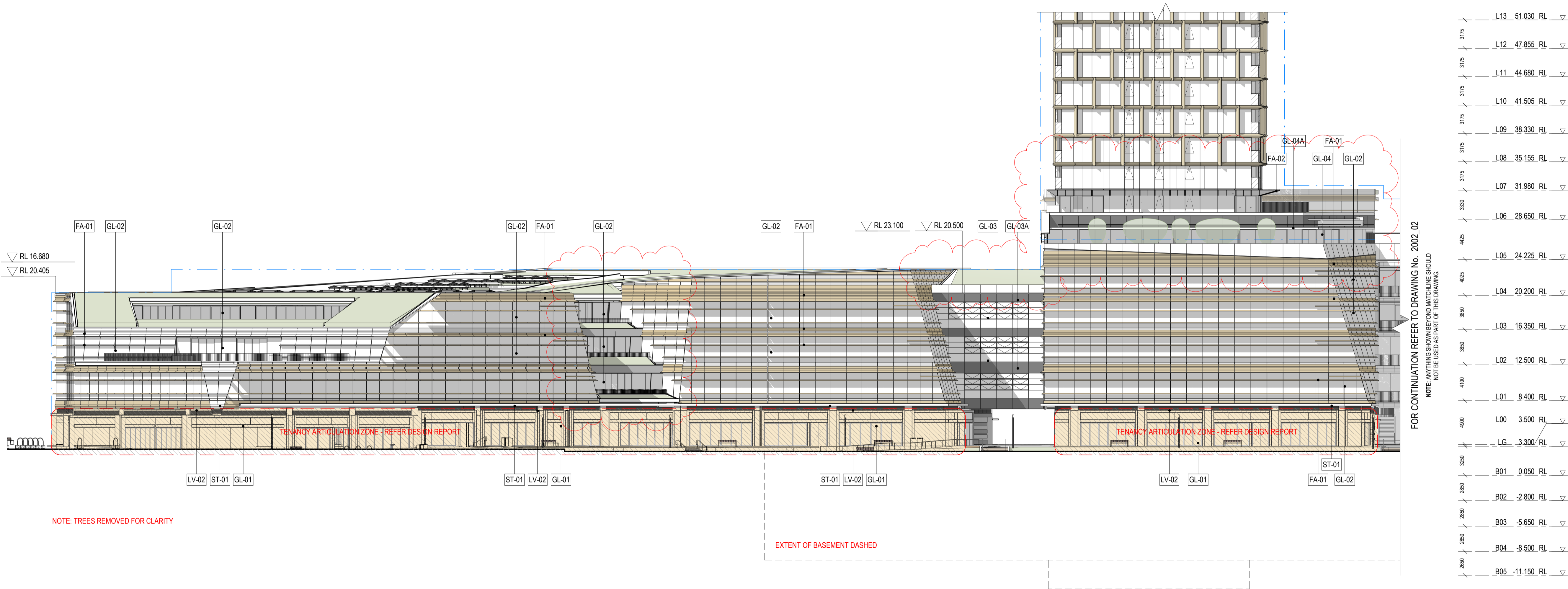
DRAWING TITLE

General Arrangement - East Elevation - Part 1

REVIEWED	SCALE @ A1
MI	1 : 250
APPROVED	PROJECT NO.
KK	016152-61A-P
DRAWING NO.	REV NO.
AR-SSDA2- 2002_01	F

FOR CONTINUATION REFER TO DRAWING No. 2002_03

NOTE: ANYTHING SHOWN BEYOND MATCHLINE SHOULD NOT BE USED AS PART OF THIS DRAWING.

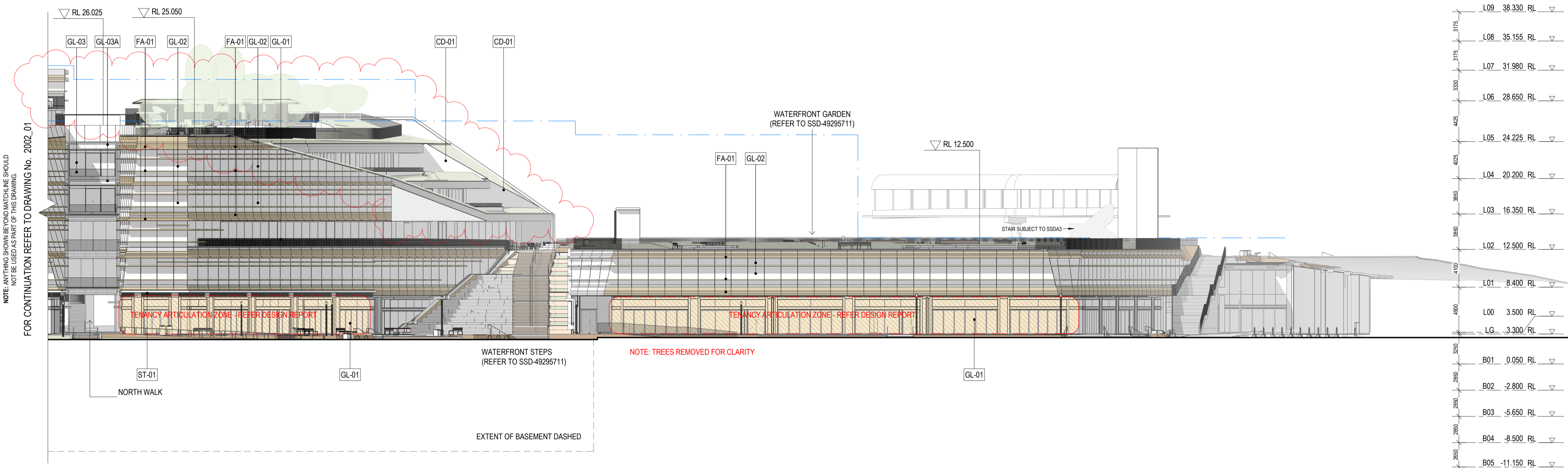


NOTES

- Do not scale drawing. Written dimensions govern
- All dimensions are in millimeters unless noted otherwise
- All dimensions shall be verified on site before proceeding with the work. Snohetta + Hassell shall be notified in writing of any discrepancies.
- This drawing must be read in conjunction with all relevant contracts, specifications and drawings

This drawing is an uncontrolled copy. Unless noted otherwise
 © Copyright of this drawing is vested in Snohetta and Hassell

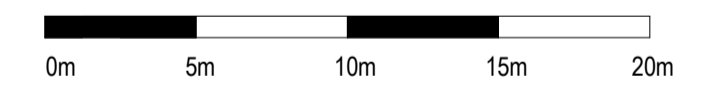
REV	DESCRIPTION	DATE
A	FOR SSDA2 APPROVAL	02/11/2022
B	For SSDA2 RTS	03/10/2023
C	S4.55 MODIFICATION 1	22/02/2024
D	S4.55 MODIFICATION 2	01/05/2024
E	S4.55 MODIFICATION 2	06/06/2024
F	S4.55 MODIFICATION 2	19/12/2024



1 GA -East Elevation - Part 2
 1 : 250

NORTH

SCALE



CLIENT



PROJECT

HARBOURSIDE
 2-10 Darling Drive, Sydney, NSW, 2000

DRAWING TITLE

General Arrangement - East Elevation - Part 2

REVIEWED MI	SCALE @ A1 1 : 250
APPROVED KK	PROJECT NO. 016152-61A-P
DRAWING NO. AR-SSDA2- 2002_02	REV NO. F

NOTES

1. Do not scale drawing. Written dimensions govern
2. All dimensions are in millimeters unless noted otherwise
3. All dimensions shall be verified on site before proceeding with the work. Snohetta + Hassell shall be notified in writing of any discrepancies.
4. This drawing must be read in conjunction with all relevant contracts, specifications and drawings

This drawing is an uncontrolled copy. Unless noted otherwise
 © Copyright of this drawing is vested in Snohetta and Hassell

REV	DESCRIPTION	DATE
A	FOR SSDA2 APPROVAL	02/11/2022
B	For SSDA2 RTS	03/10/2023
C	S4.55 MODIFICATION 1	22/02/2024
D	S4.55 MODIFICATION 2	01/05/2024
E	S4.55 MODIFICATION 2	06/06/2024
F	S4.55 MODIFICATION 2	19/12/2024

LEGEND

- ENVELOPE
- SSDA EXTENTS
- OPERABLE AWNING WINDOW
- BALCONY

GENERAL INFORMATION

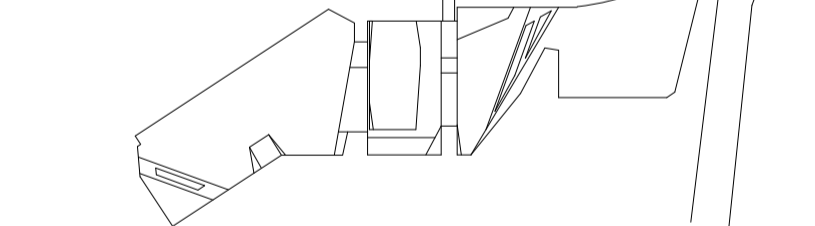
TOWER FACADE MATERIALITY
 1. The tower facade system includes curtain wall aluminium framing, fixed clear vision glass, clear vision glass awning windows, colour back glass spandrel panels, clear glass balustrades, and integral vertical and horizontal shading fins.

PODIUM FACADE MATERIALITY
 1. The podium curtain wall modules are composed of glazing with spandrel panels comprised of GRC (or similar) and colourback glazing with fritting.

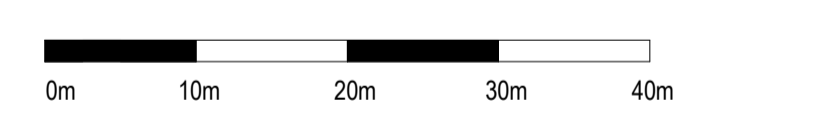
2. The facade is shaded with GRC or similar sunshades which vary in depth based on solar orientation.

3. Ground floor facades are comprised of operable shopfront glazing with varying finishes to individual tenancies.

NORTH



SCALE



CLIENT



PROJECT

HARBOURSIDE
 2-10 Darling Drive, Sydney, NSW, 2000

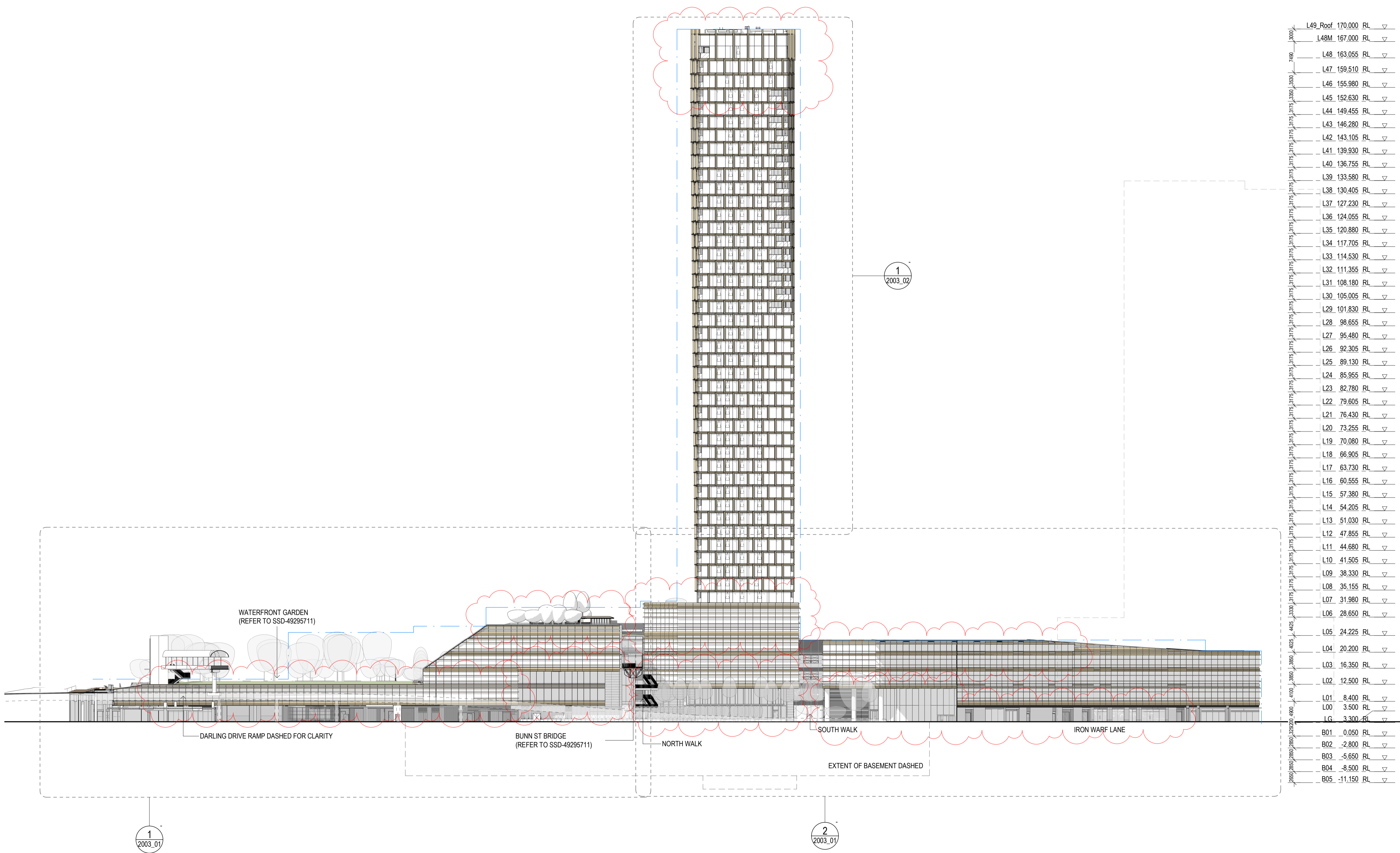
DRAWING TITLE

General Arrangement - West Elevation

REVIEWED MI SCALE @ A1 1 : 500

APPROVED KK PROJECT NO. 016152-61A-P

DRAWING NO. AR-SSDA2-2003_00 REV NO. F

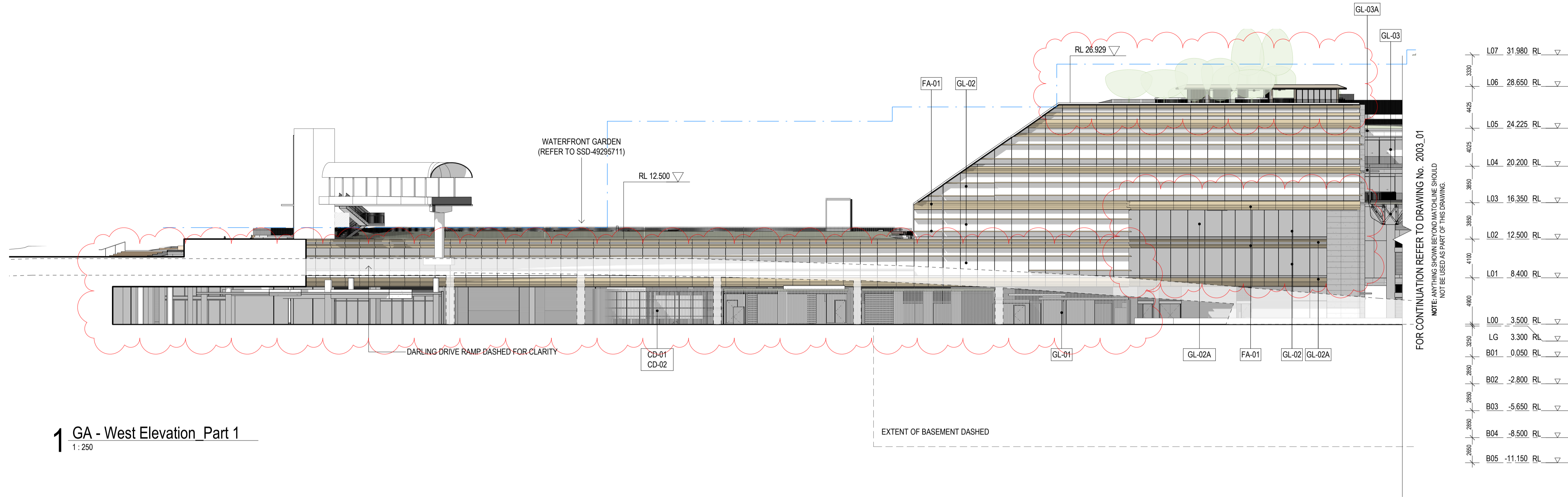


1 GA - West Elevation
 1 : 500

NOTES

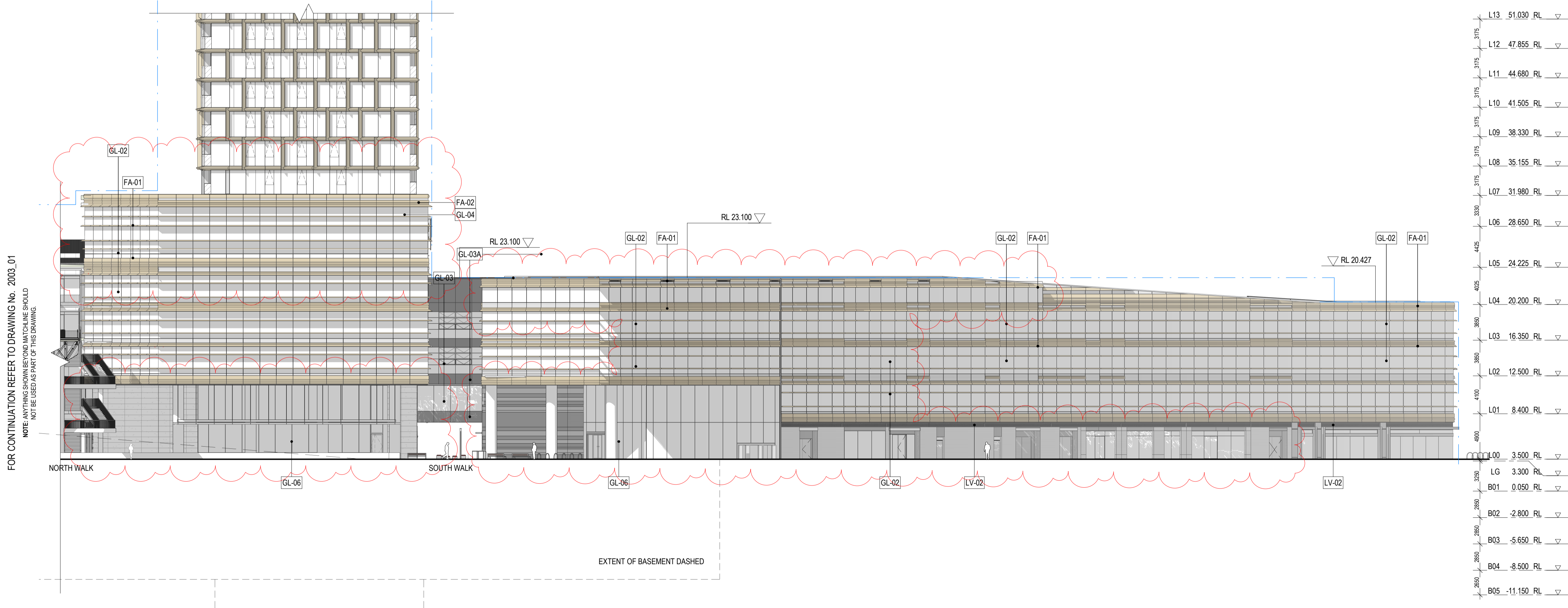
- Do not scale drawing. Written dimensions govern
- All dimensions are in millimeters unless noted otherwise
- All dimensions shall be verified on site before proceeding with the work. Snohetta + Hassell shall be notified in writing of any discrepancies.
- This drawing must be read in conjunction with all relevant contracts, specifications and drawings
 This drawing is an uncontrolled copy. Unless noted otherwise
 © Copyright of this drawing is vested in Snohetta and Hassell

REV	DESCRIPTION	DATE
A	FOR SSDA2 APPROVAL	02/11/2022
B	For SSDA2 RTS	03/10/2023
C	S4.55 MODIFICATION 1	22/02/2024
D	S4.55 MODIFICATION 2	01/05/2024
E	S4.55 MODIFICATION 1	06/06/2024
F	S4.55 MODIFICATION 2	19/12/2024



1 GA - West Elevation Part 1
 1 : 250

FOR CONTINUATION REFER TO DRAWING No. 2003_02
 NOTE: ANYTHING SHOWN BEYOND MATCHLINE SHOULD NOT BE USED AS PART OF THIS DRAWING.



2 GA - West Elevation Part 2
 1 : 250

LEGEND

- ENVELOPE
- SSDA EXTENTS
- OPERABLE AWNING WINDOW
- BALCONY

NOTE: REFER MATERIAL SCHEDULE FOR DEFINITIONS OF MATERIAL TAGS

NORTH

SCALE

CLIENT

PROJECT
 HARBOURSIDE
 2-10 Darling Drive, Sydney, NSW, 2000

DRAWING TITLE
 General Arrangement - West Elevation - Part 1 & 2

REVIEWED MI	SCALE @ A1 1 : 250
APPROVED KK	PROJECT NO. 016152-61A-P
DRAWING NO. AR-SSDA2- 2003_01	REV NO. F

NOTES

1. Do not scale drawing. Written dimensions govern
2. All dimensions are in millimeters unless noted otherwise
3. All dimensions shall be verified on site before proceeding with the work. Snøhetta + Hassell shall be notified in writing of any discrepancies.
4. This drawing must be read in conjunction with all relevant contracts, specifications and drawings

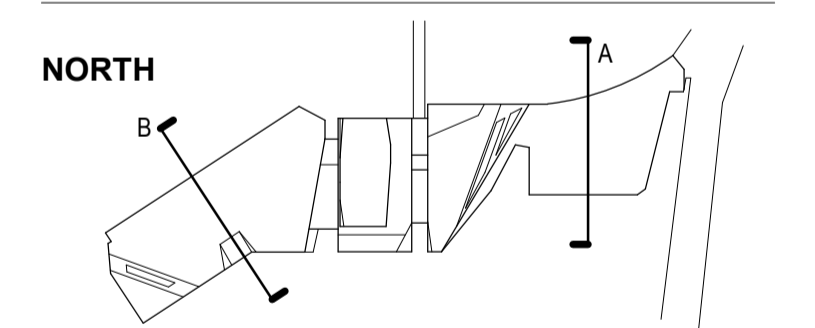
This drawing is an uncontrolled copy. Unless noted otherwise
 © Copyright of this drawing is vested in Snøhetta and Hassell

REV	DESCRIPTION	DATE
A	FOR SSDA2 APPROVAL	02/11/22
B	FOR SSDA2 RTS	29/06/2023
C	S4.55 MODIFICATION 1	01/05/2024
D	S4.55 MODIFICATION 2	06/06/2024
E	S4.55 MODIFICATION 2	19/12/2024

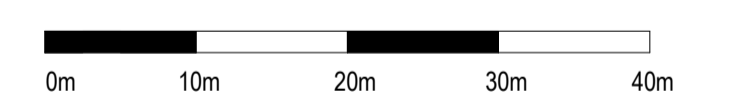
LEGEND

SSDA STAGE 1 AMENDED ENVELOPE

NORTH



SCALE



CLIENT



PROJECT

MIRVAC HARBOURSIDE
 2 - 10 DARLING DRIVE, DARLING HARBOUR
 NSW 2000

DRAWING TITLE

Section A & B

REVIEWED

KT

APPROVED

AN

DRAWING NO.

AR-SSDA2- 3000_00

SCALE @ A1

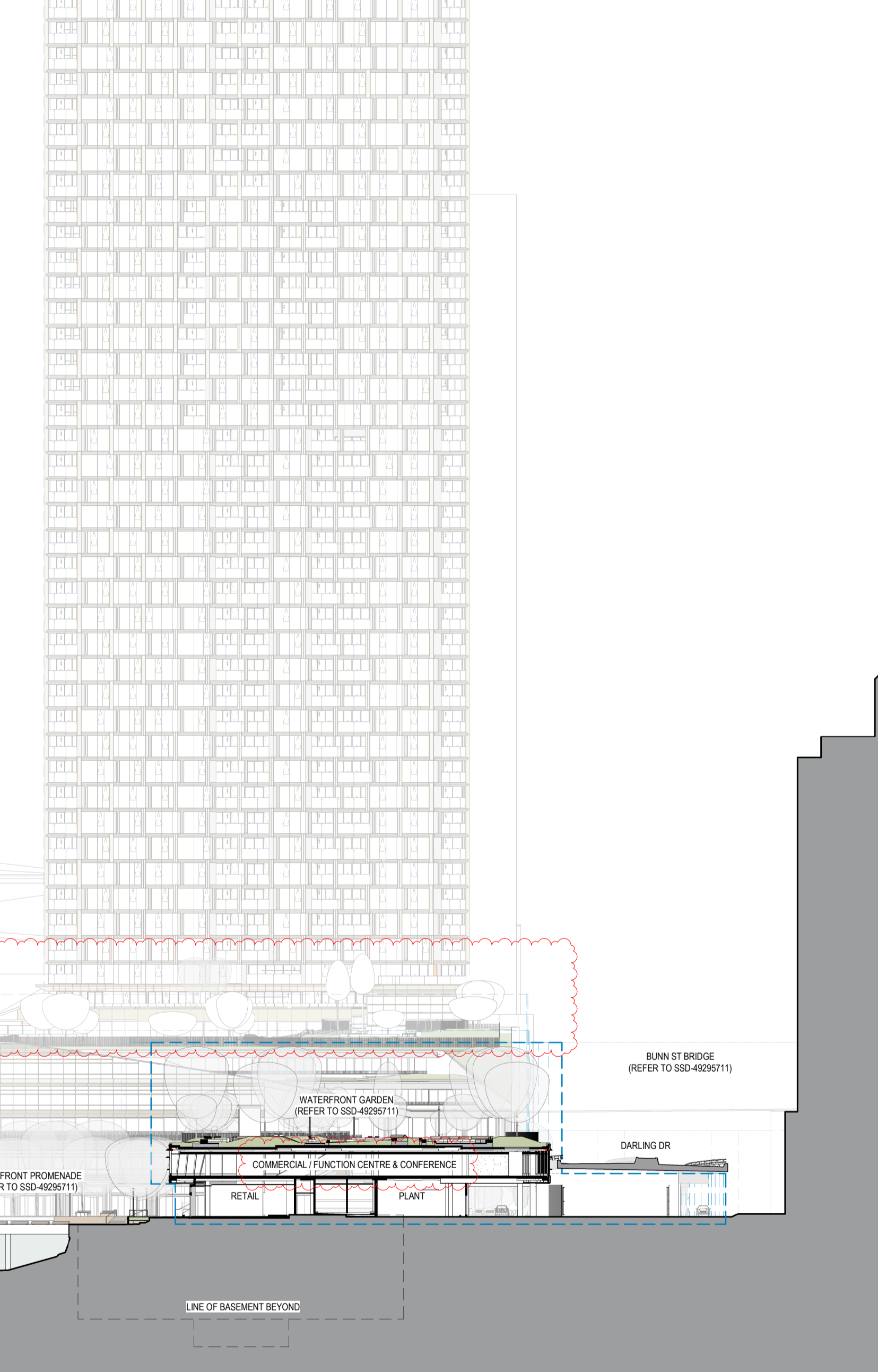
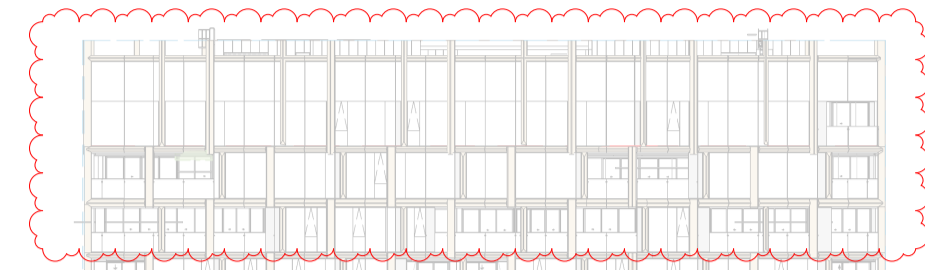
1 : 500

PROJECT NO.

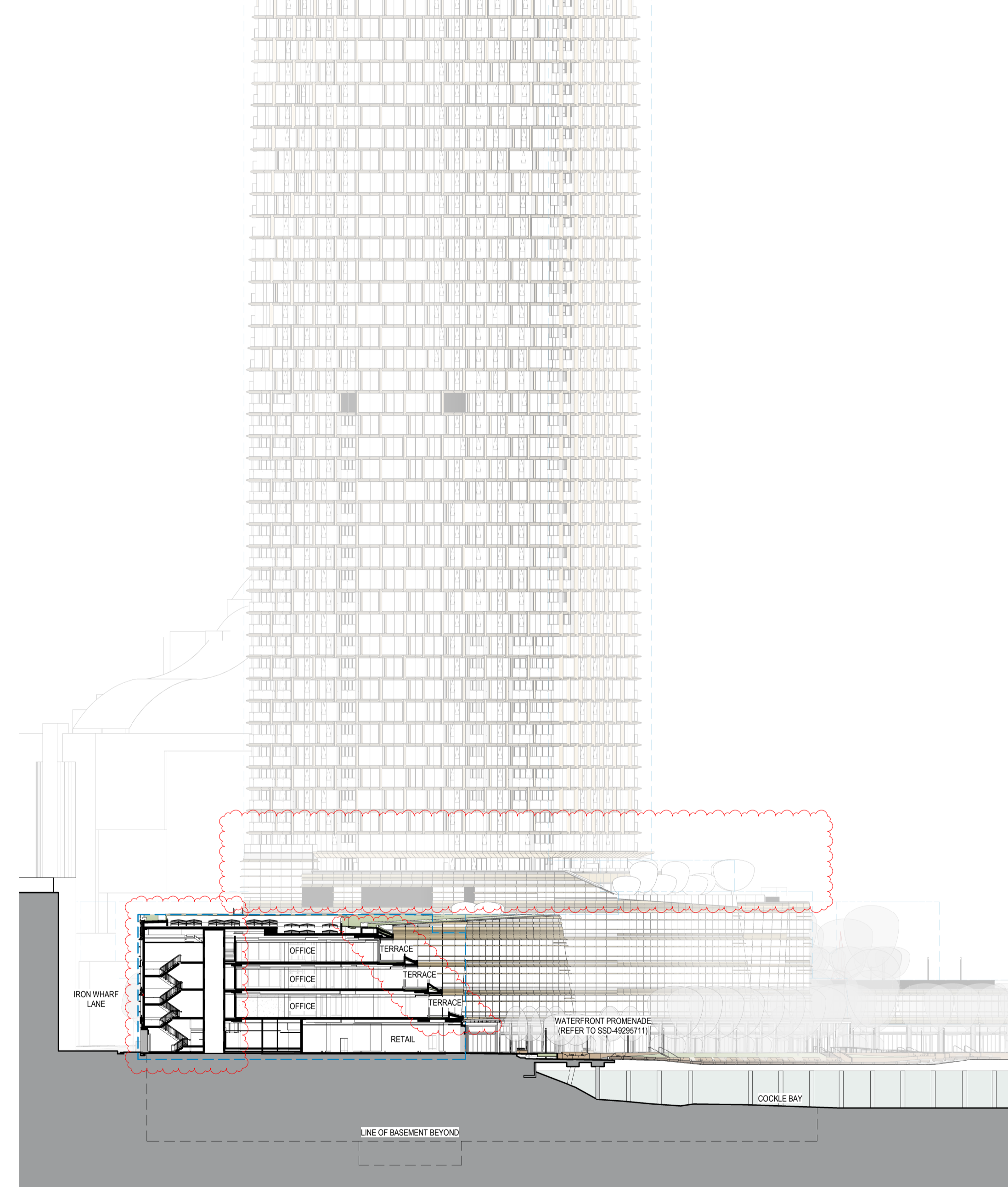
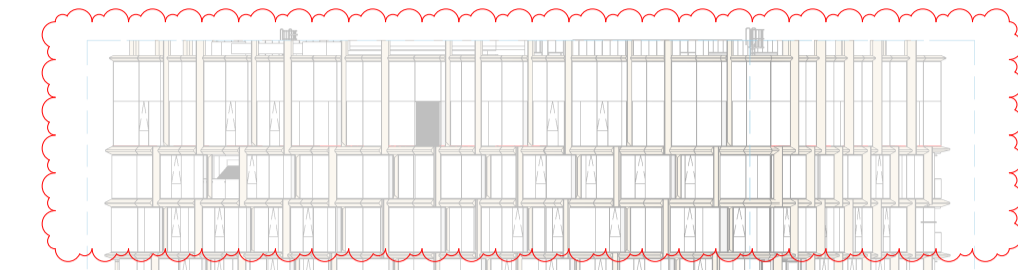
016152-61A-P

REV NO.

E



A SECTION A
 1:500



B SECTION B
 1:500

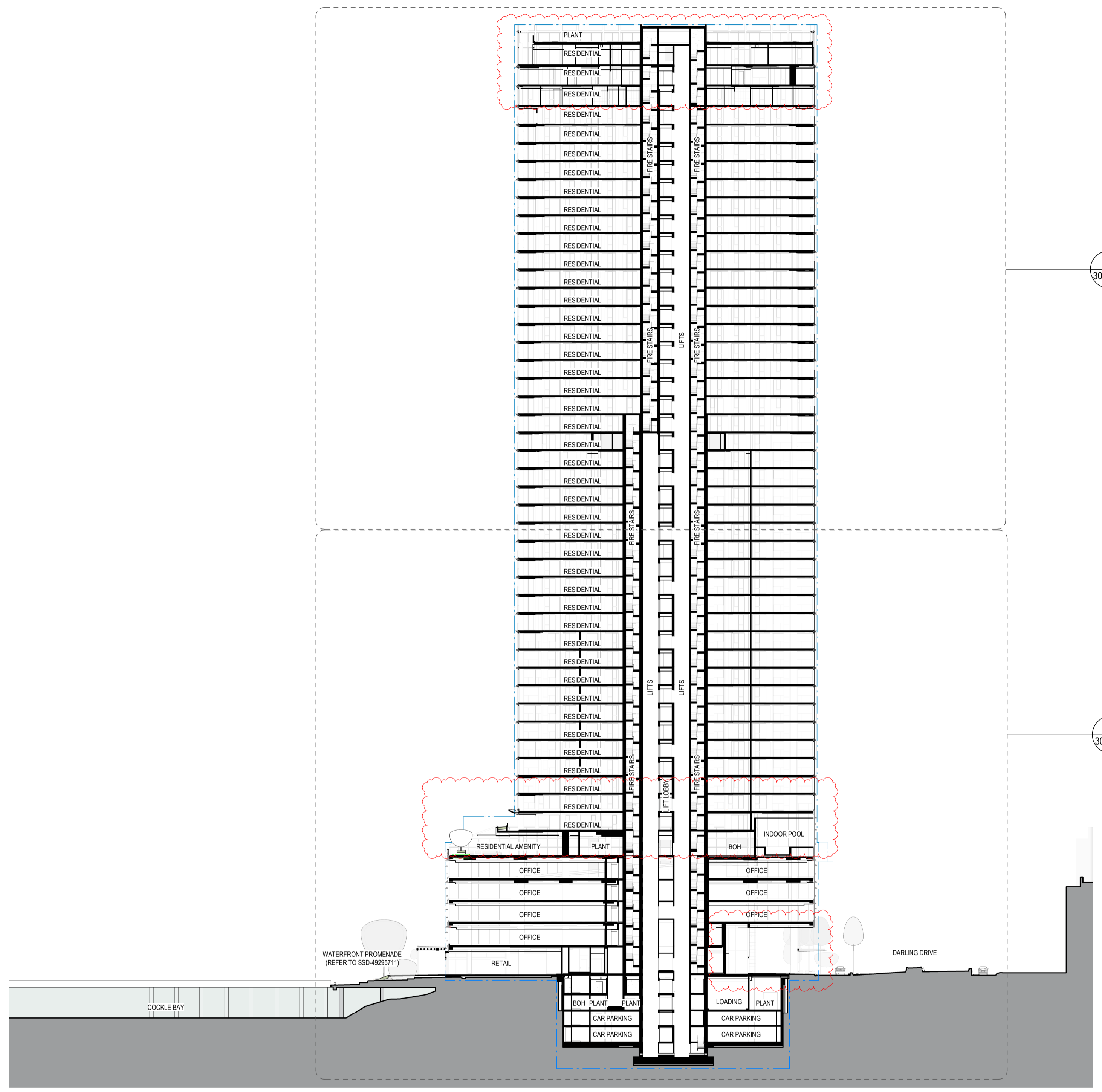
---	L49_Roof	170.000	RL	▽
---	L48M	167.000	RL	▽
---	L48	163.055	RL	▽
---	L47	158.510	RL	▽
---	L46	155.980	RL	▽
---	L45	150.630	RL	▽
---	L44	149.455	RL	▽
---	L43	146.280	RL	▽
---	L42	143.105	RL	▽
---	L41	138.930	RL	▽
---	L40	136.755	RL	▽
---	L39	133.580	RL	▽
---	L38	130.405	RL	▽
---	L37	127.230	RL	▽
---	L36	124.055	RL	▽
---	L35	120.880	RL	▽
---	L34	117.705	RL	▽
---	L33	114.530	RL	▽
---	L32	111.355	RL	▽
---	L31	108.180	RL	▽
---	L30	104.005	RL	▽
---	L29	101.830	RL	▽
---	L28	98.655	RL	▽
---	L27	95.480	RL	▽
---	L26	92.305	RL	▽
---	L25	89.130	RL	▽
---	L24	85.955	RL	▽
---	L23	82.780	RL	▽
---	L22	79.605	RL	▽
---	L21	76.430	RL	▽
---	L20	73.255	RL	▽
---	L19	70.080	RL	▽
---	L18	66.905	RL	▽
---	L17	63.730	RL	▽
---	L16	60.555	RL	▽
---	L15	57.380	RL	▽
---	L14	54.205	RL	▽
---	L13	51.030	RL	▽
---	L12	47.855	RL	▽
---	L11	44.680	RL	▽
---	L10	41.505	RL	▽
---	L09	38.330	RL	▽
---	L08	35.155	RL	▽
---	L07	31.980	RL	▽
---	L06	28.805	RL	▽
---	L05	24.225	RL	▽
---	L04	20.200	RL	▽
---	L03	16.360	RL	▽
---	L02	12.500	RL	▽
---	L01	8.400	RL	▽
---	L00	3.500	RL	▽
---	B01	0.050	RL	▽
---	B02	-2.800	RL	▽
---	B03	-5.650	RL	▽
---	B04	-8.500	RL	▽
---	B05	-11.150	RL	▽

NOTES

- Do not scale drawing. Written dimensions govern
- All dimensions are in millimeters unless noted otherwise
- All dimensions shall be verified on site before proceeding with the work. Snøhetta + Hassell shall be notified in writing of any discrepancies.
- This drawing must be read in conjunction with all relevant contracts, specifications and drawings

This drawing is an uncontrolled copy. Unless noted otherwise
 © Copyright of this drawing is vested in Snøhetta and Hassell

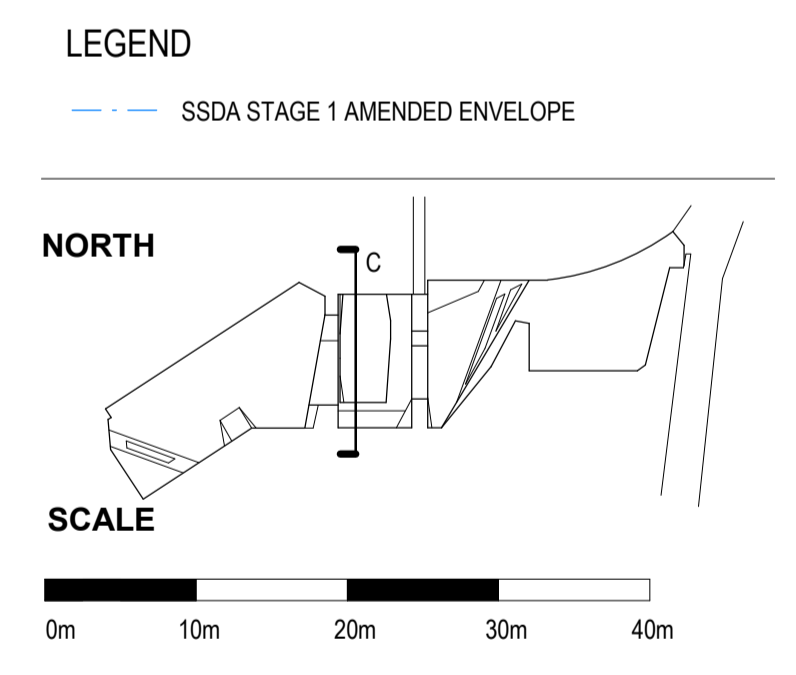
REV	DESCRIPTION	DATE
A	FOR SSDA2 APPROVAL	02/11/22
B	FOR SSDA2 RTS	29/06/2023
C	S4.55 MODIFICATION 1	22/02/2024
D	S4.55 MODIFICATION 2	01/05/2024
E	S4.55 MODIFICATION 2	06/06/2024
F	S4.55 MODIFICATION 2	19/12/2024



L49_Roof	170.000	RL	▽
L48M	167.000	RL	▽
L48	163.055	RL	▽
L47	159.510	RL	▽
L46	155.980	RL	▽
L45	152.630	RL	▽
L44	149.455	RL	▽
L43	146.280	RL	▽
L42	143.105	RL	▽
L41	139.930	RL	▽
L40	136.755	RL	▽
L39	133.580	RL	▽
L38	130.405	RL	▽
L37	127.230	RL	▽
L36	124.055	RL	▽
L35	120.880	RL	▽
L34	117.705	RL	▽
L33	114.530	RL	▽
L32	111.355	RL	▽
L31	108.180	RL	▽
L30	105.005	RL	▽
L29	101.830	RL	▽
L28	98.655	RL	▽
L27	95.480	RL	▽
L26	92.305	RL	▽
L25	89.130	RL	▽
L24	85.955	RL	▽
L23	82.780	RL	▽
L22	79.605	RL	▽
L21	76.430	RL	▽
L20	73.255	RL	▽
L19	70.080	RL	▽
L18	66.905	RL	▽
L17	63.730	RL	▽
L16	60.555	RL	▽
L15	57.380	RL	▽
L14	54.205	RL	▽
L13	51.030	RL	▽
L12	47.855	RL	▽
L11	44.680	RL	▽
L10	41.505	RL	▽
L09	38.330	RL	▽
L08	35.155	RL	▽
L07	31.980	RL	▽
L06	28.805	RL	▽
L05	24.225	RL	▽
L04	20.200	RL	▽
L03	16.360	RL	▽
L02	12.500	RL	▽
L01	8.400	RL	▽
L00	3.500	RL	▽
R01	-0.050	RL	▽
R02	-2.800	RL	▽
R03	-6.650	RL	▽
R04	-8.500	RL	▽
R05	-11.150	RL	▽

1
3001_02

1
3001_01



C SECTION C
 1:500

CLIENT

mirvac
PROJECT
 MIRVAC HARBOURSIDE
 2 - 10 DARLING DRIVE, DARLING HARBOUR
 NSW 2000

DRAWING TITLE
 Section C

REVIEWED
 KT

APPROVED
 AN

DRAWING NO.
 AR-SSDA2- 3001_00

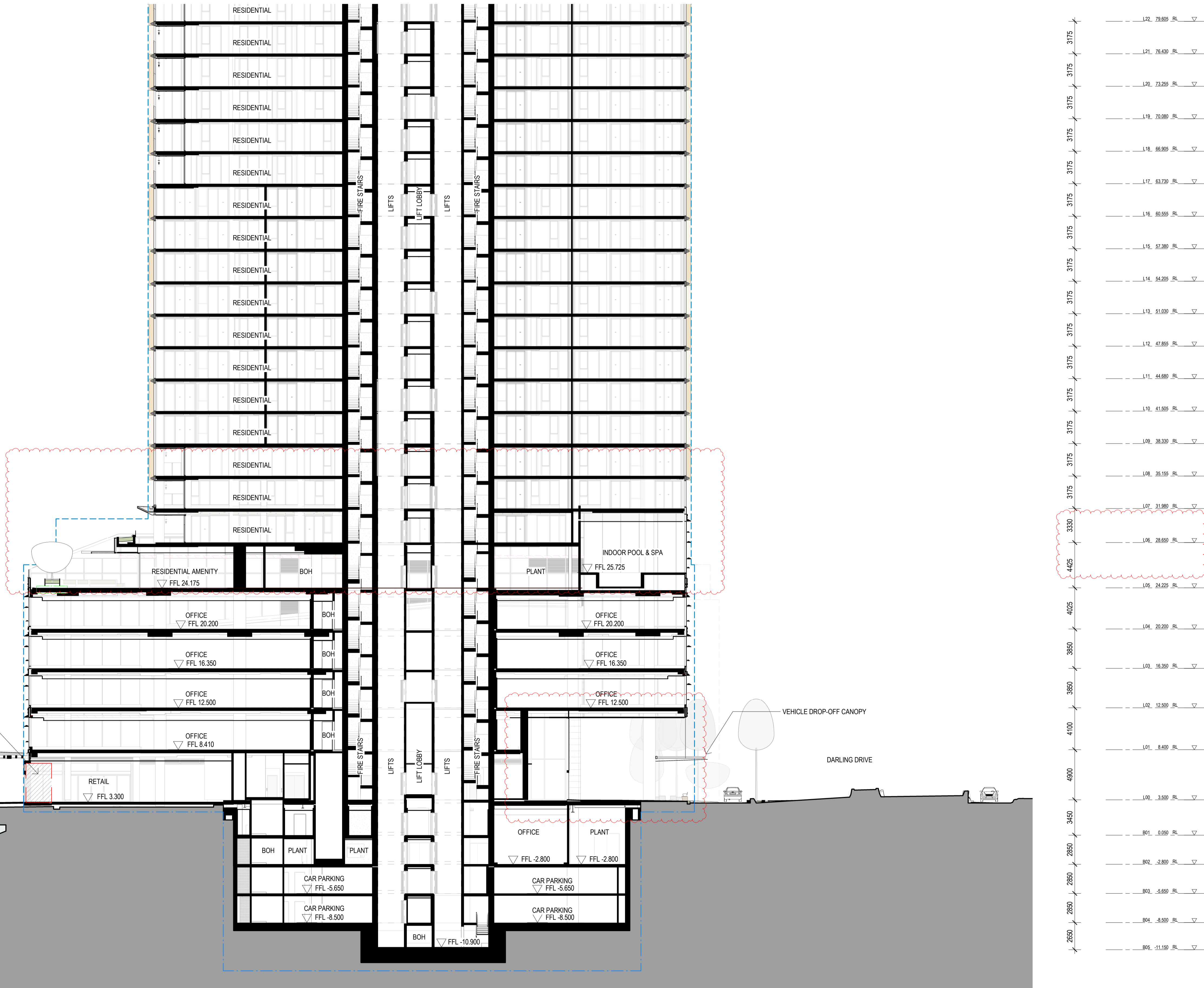
SCALE @ A1
 1 : 500

PROJECT NO.
 016152-61A-P

REV NO.
 F

FOR CONTINUATION REFER TO DRAWING No. 3001_02

NOTE: ANYTHING SHOWN BEYOND MATCHLINE SHOULD NOT BE USED AS PART OF THIS DRAWING.



Snøhetta
178 Sturt St | Adelaide | Australasia | SA 5000

Hassell
Hassell LTD ABN 24 007 711 435
Level 2, Pier 8/9, 23 Hickson Rd
Sydney NSW 2000 Australia
T +61 2 9101 2000
F +61 2 9101 2100
sydney@hassellstudio.com
Nominated Architects NSW:
Tony Grist 5350
Glenn Scott 5842
Ross de la Motte 7398

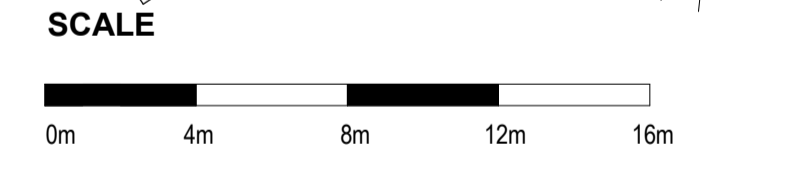
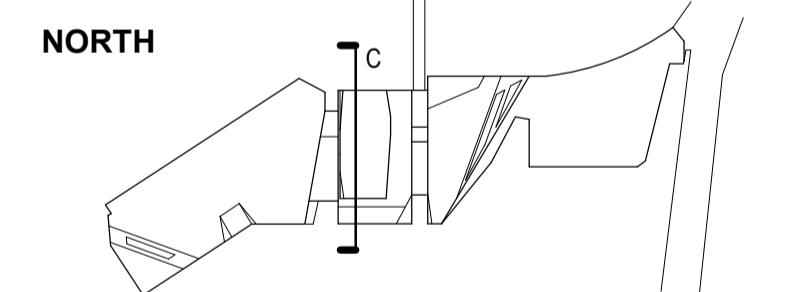
NOTES

- Do not scale drawing. Written dimensions govern
- All dimensions are in millimeters unless noted otherwise
- All dimensions shall be verified on site before proceeding with the work. Snøhetta + Hassell shall be notified in writing of any discrepancies.
- This drawing must be read in conjunction with all relevant contracts, specifications and drawings

This drawing is an uncontrolled copy. Unless noted otherwise
© Copyright of this drawing is vested in Snøhetta and Hassell

REV	DESCRIPTION	DATE
A	FOR SSDA2 APPROVAL	02/11/22
B	FOR SSDA2 RTS	29/06/2023
C	S4.55 MODIFICATION 1	22/02/2024
D	S4.55 MODIFICATION 2	01/05/2024
E	S4.55 MODIFICATION 2	06/06/2024
F	S4.55 MODIFICATION 2	19/12/2024

LEGEND
SSDA STAGE 1 AMENDED ENVELOPE

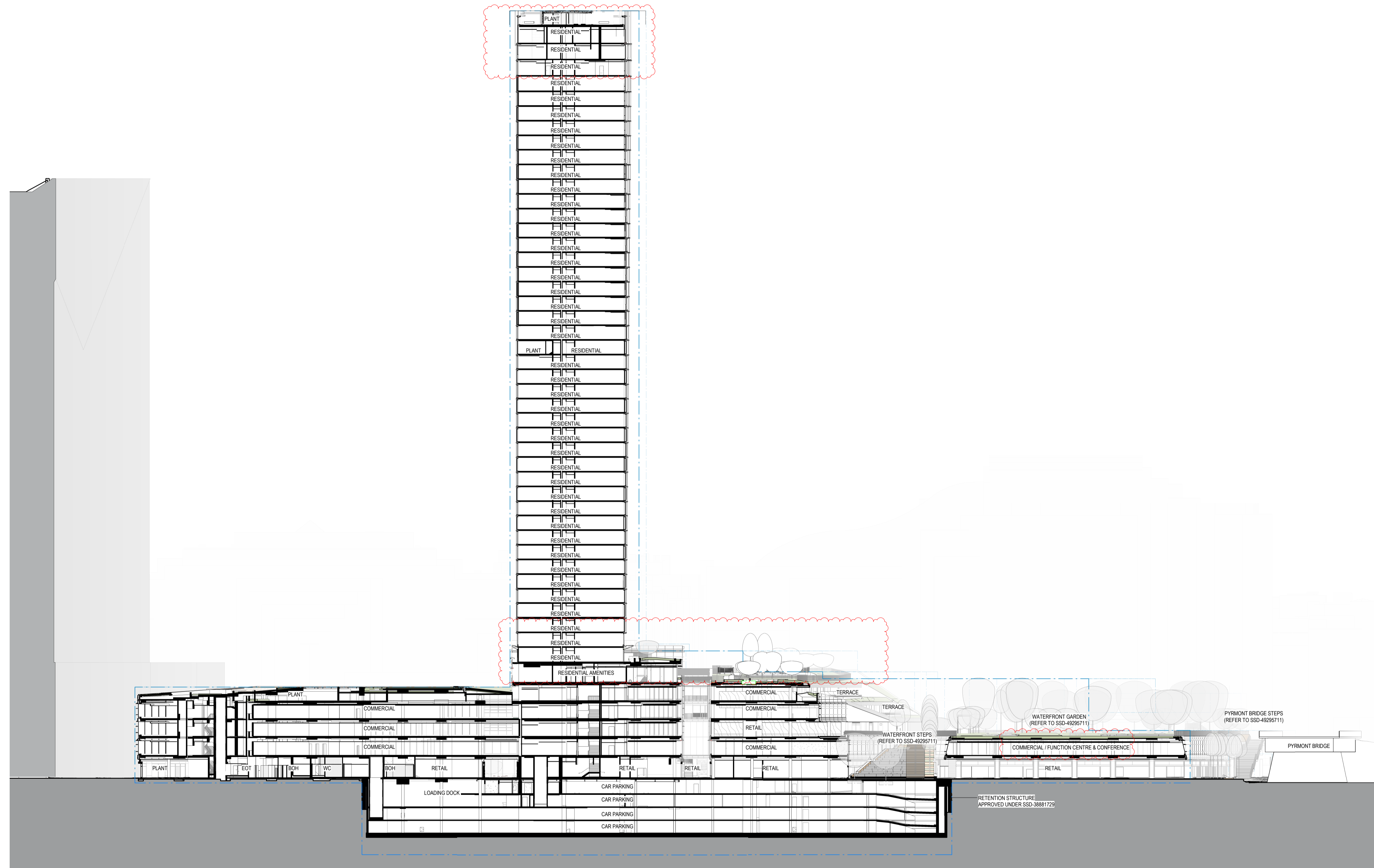


CLIENT
mirvac
PROJECT
MIRVAC HARBOURSIDE
2 - 10 DARLING DRIVE, DARLING HARBOUR
NSW 2000

DRAWING TITLE
Section C - Part 1

REVIEWED KT	SCALE @ A1 1 : 200
APPROVED AN	PROJECT NO. 016152-61A-P
DRAWING NO. AR-SSDA2- 3001_01	REV NO. F

1 SECTION C - PART 1
1:200



---	L49_Roof	170.000	RL	▽
---	L48M	167.000	RL	▽
---	L48	163.055	RL	▽
---	L47	159.510	RL	▽
---	L46	155.980	RL	▽
---	L45	152.630	RL	▽
---	L44	149.455	RL	▽
---	L43	146.280	RL	▽
---	L42	143.105	RL	▽
---	L41	139.930	RL	▽
---	L40	136.755	RL	▽
---	L39	133.580	RL	▽
---	L38	130.405	RL	▽
---	L37	127.230	RL	▽
---	L36	124.055	RL	▽
---	L35	120.880	RL	▽
---	L34	117.705	RL	▽
---	L33	114.530	RL	▽
---	L32	111.355	RL	▽
---	L31	108.180	RL	▽
---	L30	105.005	RL	▽
---	L29	101.830	RL	▽
---	L28	98.655	RL	▽
---	L27	95.480	RL	▽
---	L26	92.305	RL	▽
---	L25	89.130	RL	▽
---	L24	85.955	RL	▽
---	L23	82.780	RL	▽
---	L22	79.605	RL	▽
---	L21	76.430	RL	▽
---	L20	73.255	RL	▽
---	L19	70.080	RL	▽
---	L18	66.905	RL	▽
---	L17	63.730	RL	▽
---	L16	60.555	RL	▽
---	L15	57.380	RL	▽
---	L14	54.205	RL	▽
---	L13	51.030	RL	▽
---	L12	47.855	RL	▽
---	L11	44.680	RL	▽
---	L10	41.505	RL	▽
---	L09	38.330	RL	▽
---	L08	35.155	RL	▽
---	L07	31.980	RL	▽
---	L06	28.805	RL	▽
---	L05	24.225	RL	▽
---	L04	20.200	RL	▽
---	L03	16.350	RL	▽
---	L02	12.500	RL	▽
---	L01	8.400	RL	▽
---	B01	3.500	RL	▽
---	B02	-2.800	RL	▽
---	B03	-5.650	RL	▽
---	B04	-8.500	RL	▽
---	B05	-11.150	RL	▽

NOTES

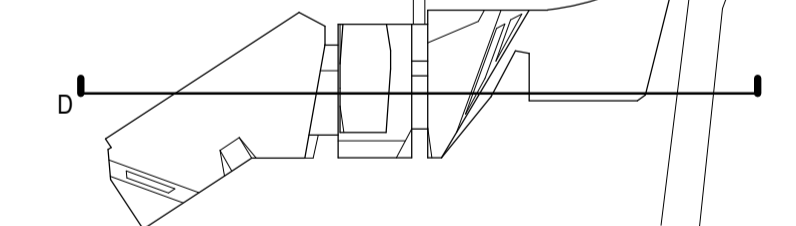
1. Do not scale drawing. Written dimensions govern
 2. All dimensions are in millimeters unless noted otherwise
 3. All dimensions shall be verified on site before proceeding with the work. Snøhetta + Hassell shall be notified in writing of any discrepancies.
 4. This drawing must be read in conjunction with all relevant contracts, specifications and drawings
- This drawing is an uncontrolled copy. Unless noted otherwise
 © Copyright of this drawing is vested in Snøhetta and Hassell

REV	DESCRIPTION	DATE
A	FOR SSDA2 APPROVAL	02/11/22
B	FOR SSDA2 RTS	29/06/2023
C	S4.55 MODIFICATION 1	22/02/2024
D	S4.55 MODIFICATION 2	01/05/2024
E	S4.55 MODIFICATION 2	06/06/2024
F	S4.55 MODIFICATION 2	19/12/2024

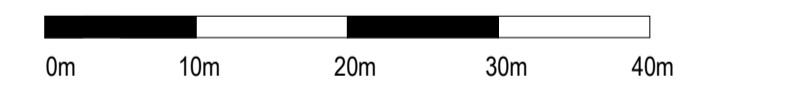
LEGEND

- SSDA STAGE 1 AMENDED ENVELOPE

NORTH



SCALE



CLIENT

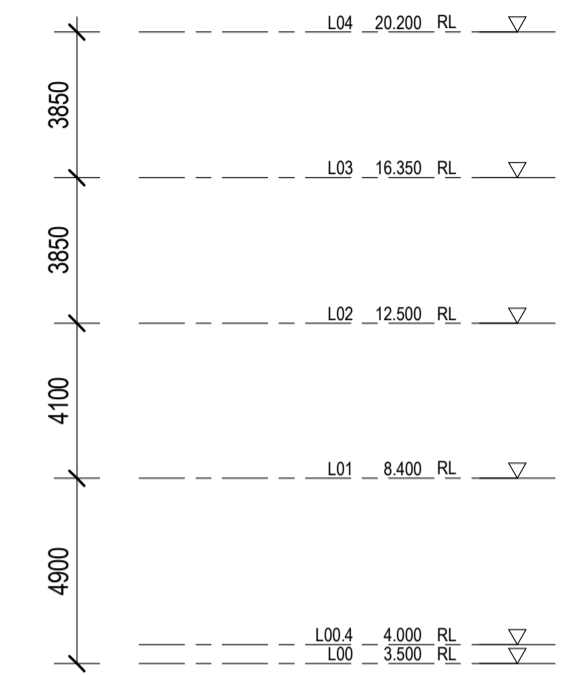
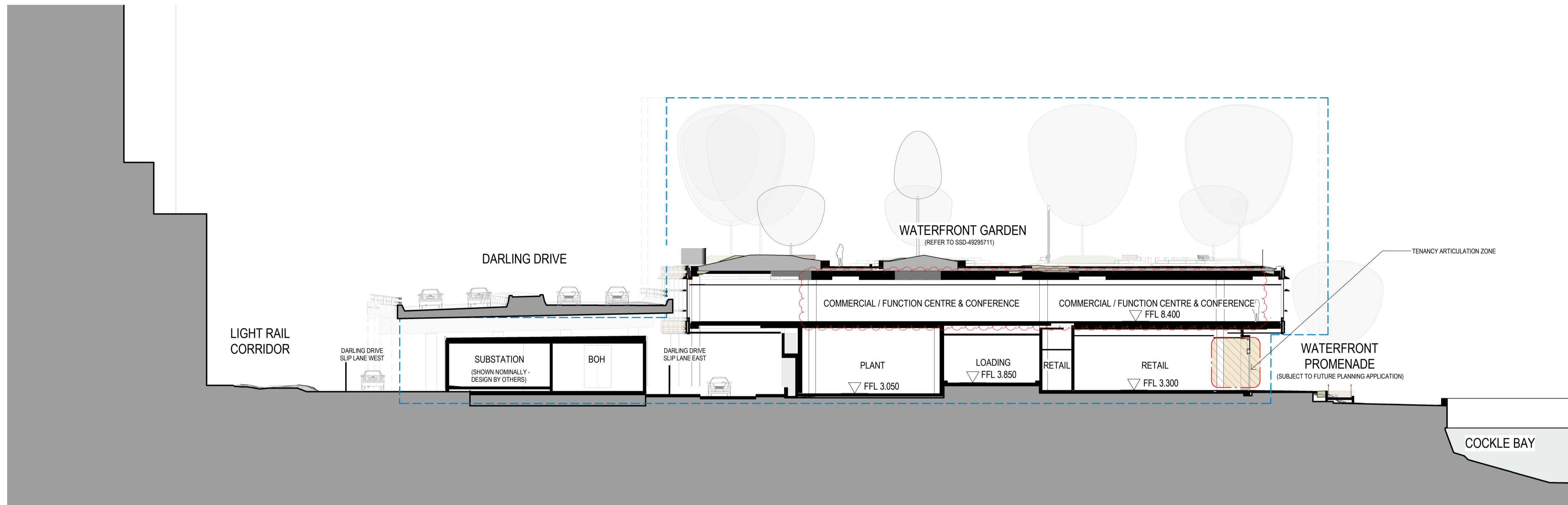
mirvac
PROJECT
 MIRVAC HARBOURSIDE
 2 - 10 DARLING DRIVE, DARLING HARBOUR
 NSW 2000

DRAWING TITLE

Section D

REVIEWED KT	SCALE @ A1 1 : 500
APPROVED AN	PROJECT NO. 016152-61A-P
DRAWING NO. AR-SSDA2- 3002_00	REV NO. F

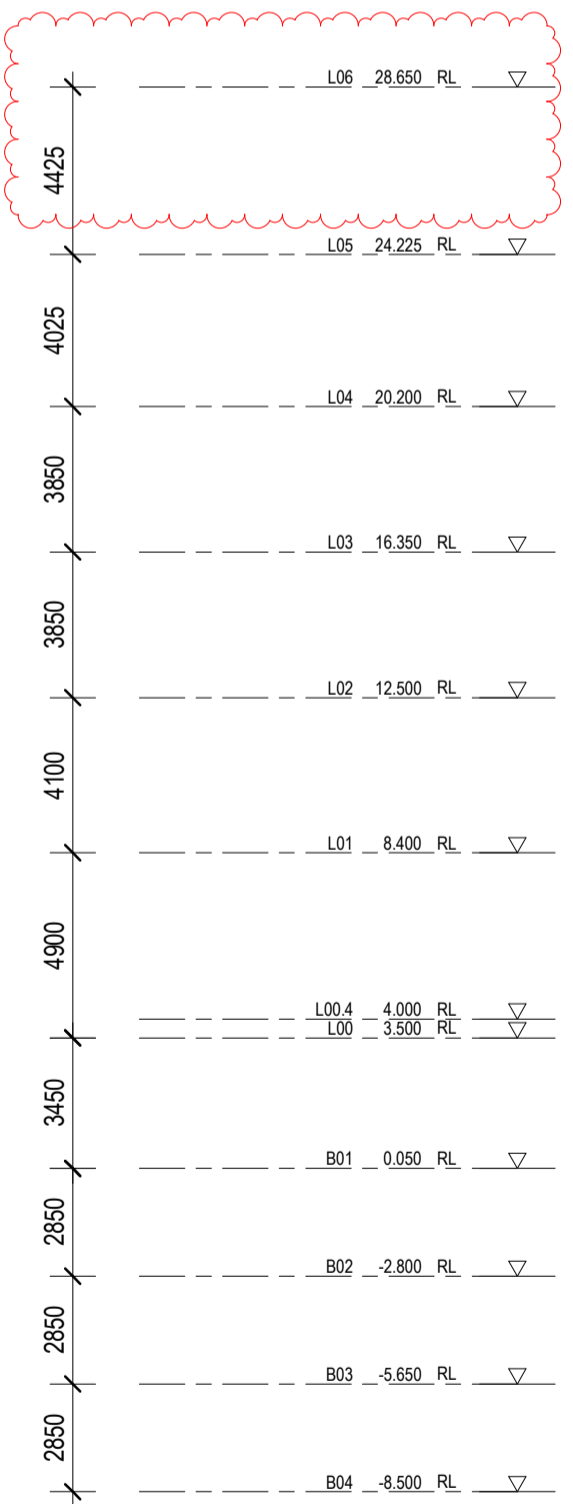
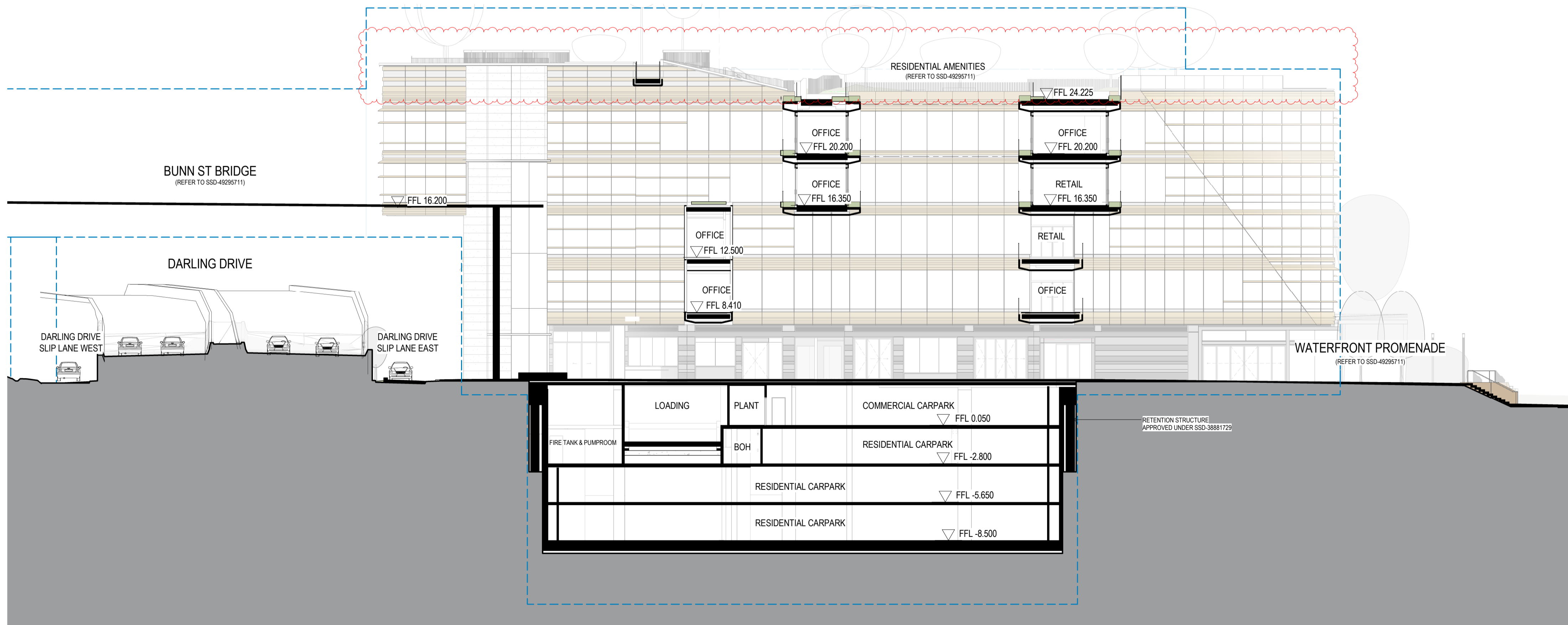
D SECTION D
 1:500



- NOTES**
- Do not scale drawing. Written dimensions govern
 - All dimensions are in millimeters unless noted otherwise
 - All dimensions shall be verified on site before proceeding with the work. Snøhetta + Hassell shall be notified in writing of any discrepancies.
 - This drawing must be read in conjunction with all relevant contracts, specifications and drawings
This drawing is an uncontrolled copy. Unless noted otherwise
© Copyright of this drawing is vested in Snøhetta and Hassell

REV	DESCRIPTION	DATE
A	FOR SSDA2 APPROVAL	02/11/22
B	FOR SSDA2 RTS	29/06/2023
C	S4.55 MODIFICATION 2	01/05/2024
D	S4.55 MODIFICATION 2	06/06/2024
E	S4.55 MODIFICATION 2	19/12/2024

E SECTION E
1:200



LEGEND
SSDA STAGE 1 AMENDED ENVELOPE

NORTH

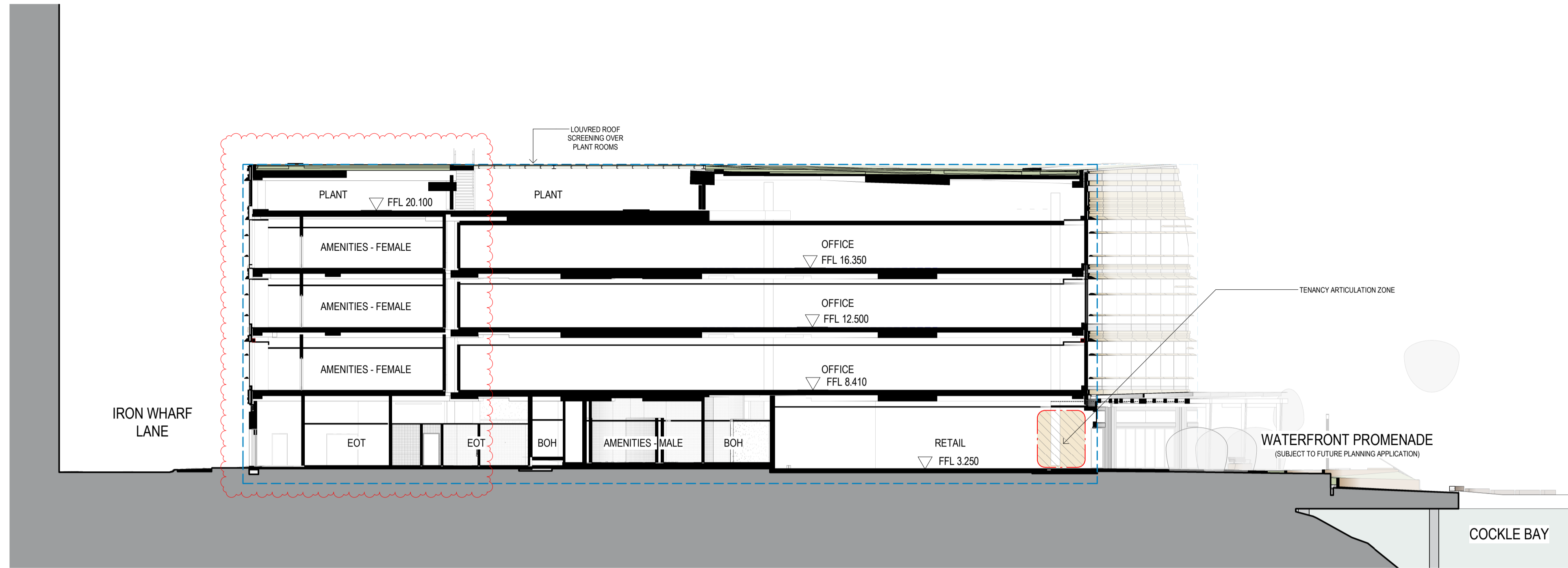
SCALE
0m 4m 8m 12m 16m

CLIENT
mirvac
PROJECT
MIRVAC HARBOURSIDE
2 - 10 DARLING DRIVE, DARLING HARBOUR
NSW 2000

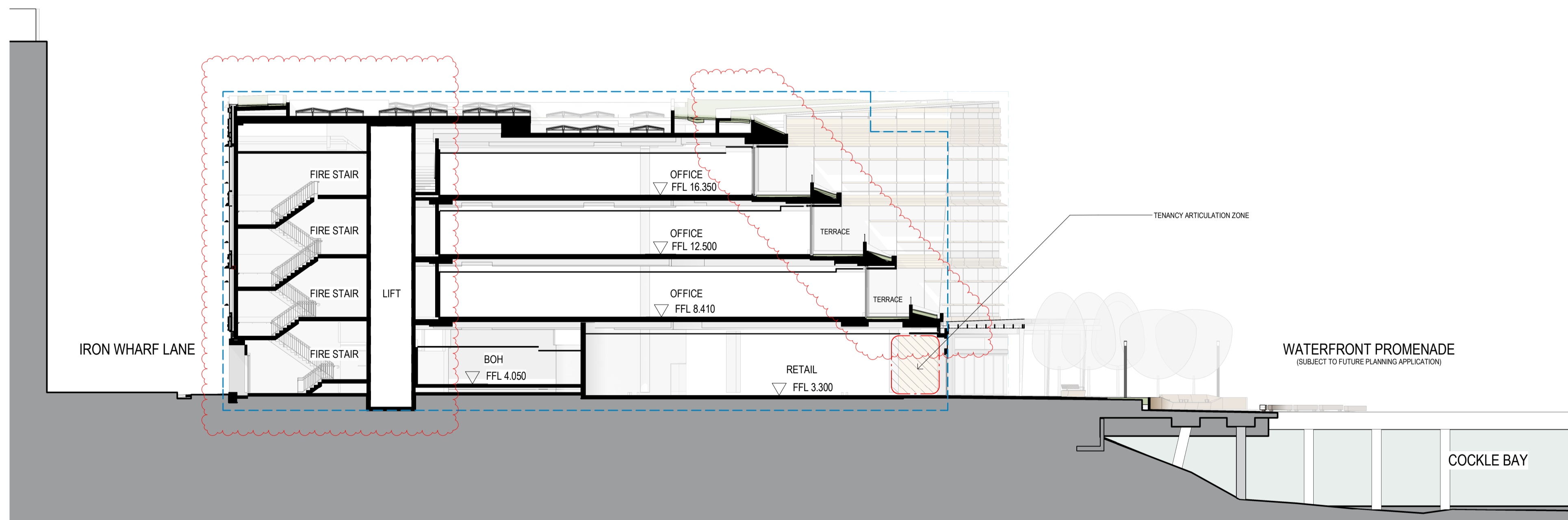
DRAWING TITLE
Section E & F

REVIEWED KT	SCALE @ A1 1:200
APPROVED AN	PROJECT NO. 016152-61A-P
DRAWING NO. AR-SSDA2- 3003_00	REV NO. E

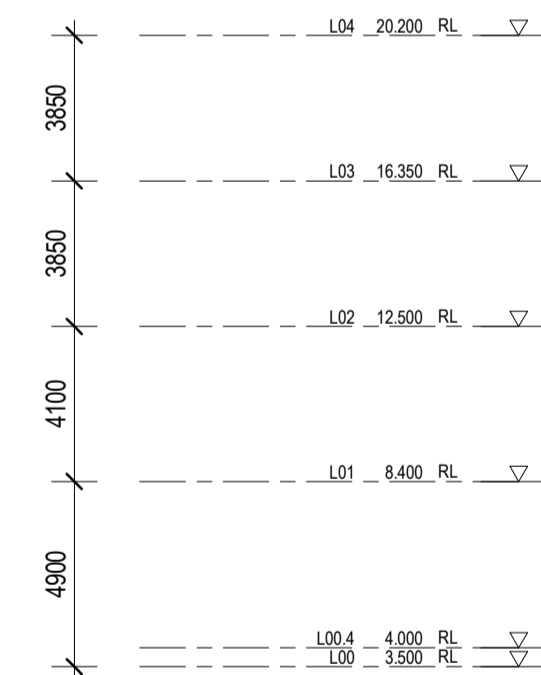
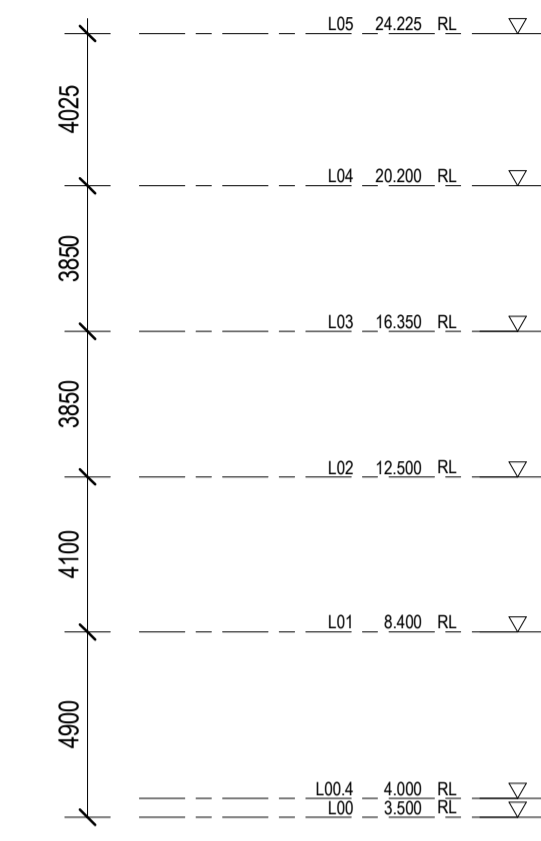
F SECTION F
1:200



G SECTION G
 1:200



H SECTION H
 1:200



NOTES

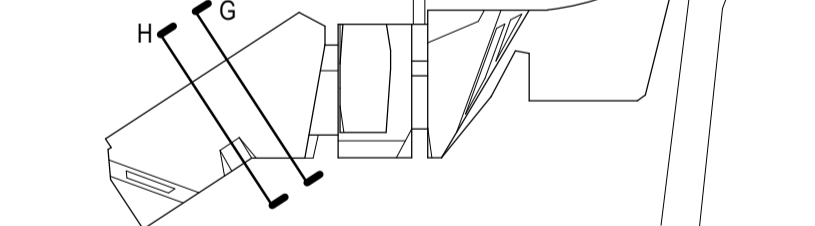
1. Do not scale drawing. Written dimensions govern
 2. All dimensions are in millimeters unless noted otherwise
 3. All dimensions shall be verified on site before proceeding with the work. Snohetta + Hassell shall be notified in writing of any discrepancies.
 4. This drawing must be read in conjunction with all relevant contracts, specifications and drawings
- This drawing is an uncontrolled copy. Unless noted otherwise
 © Copyright of this drawing is vested in Snohetta and Hassell

REV	DESCRIPTION	DATE
A	FOR SSDA2 APPROVAL	02/11/22
B	FOR SSDA2 RTS	29/06/2023
C	S4.55 MODIFICATION 2	01/05/2024
D	S4.55 MODIFICATION 2	06/06/2024
E	S4.55 MODIFICATION 2	19/12/2024

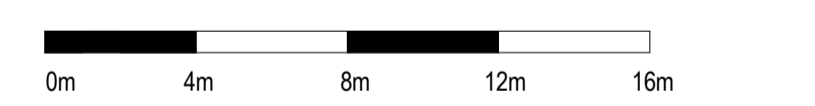
LEGEND

SSDA STAGE 1 AMENDED ENVELOPE

NORTH



SCALE



CLIENT

mirvac
PROJECT
 MIRVAC HARBOURSIDE
 2 - 10 DARLING DRIVE, DARLING HARBOUR
 NSW 2000

DRAWING TITLE

Section G & H

REVIEWED KT	SCALE @ A1 1 : 200
APPROVED AN	PROJECT NO. 016152-61A-P
DRAWING NO. AR-SSDA2- 3004_00	REV NO. E