



4-6 BLIGH STREET

SYDNEY, NSW

LANDSCAPE DOCUMENTATION

SSDA

DRAWING REGISTER

Dwg No.	Drawing Title	Scale	Size
General			
L-00	Cover Page & Drawing Schedule	N/A	A1
Plans			
L-01	Landscape Plan - Basement 01	1:100	A1
L-02	Landscape Plan - Ground Floor	1:100	A1
L-03	Landscape Plan - Level 01	1:100	A1
L-04	Landscape Plan - Level 02	1:100	A1
L-05	Landscape Plan - Level 03	1:100	A1
L-06	Landscape Plan - Level 12	1:100	A1
L-07	Landscape Plan - Level 57	1:100	A1
Sections			
L-08	Landscape Sections 1	A/S	A1
L-09	Landscape Sections 2	A/S	A1
L-10	Landscape Sections 3	A/S	A1
L-11	Plant Palette	A/S	A1

GENERAL NOTES

* FOR SSDA APPLICATION ONLY

* All tree dimensions and RLs in metres. All other dimensions in mm unless stated otherwise.

* Do not scale from drawings. Use figured dimensions only. Larger scale drawings and written dimensions take preference.

* All work shall be carried out in accordance with current versions of Australian Standards, BCA and Local Government Regulations.

* Structural Details are indicative only and are subject to Structural Engineer's Details and Specifications.

* Drainage details are subject to Hydraulic / Civil Engineer's Detail and Specification.

* Subbase details including compaction are to Civil and Structural Engineer's Specification.

* Lighting Plans are subject to detailed design by a qualified Lighting Consultant or Electrical Contractor.

* Water Feature Details are indicative only and are subject to detailed design by a specialist Water Feature designer.

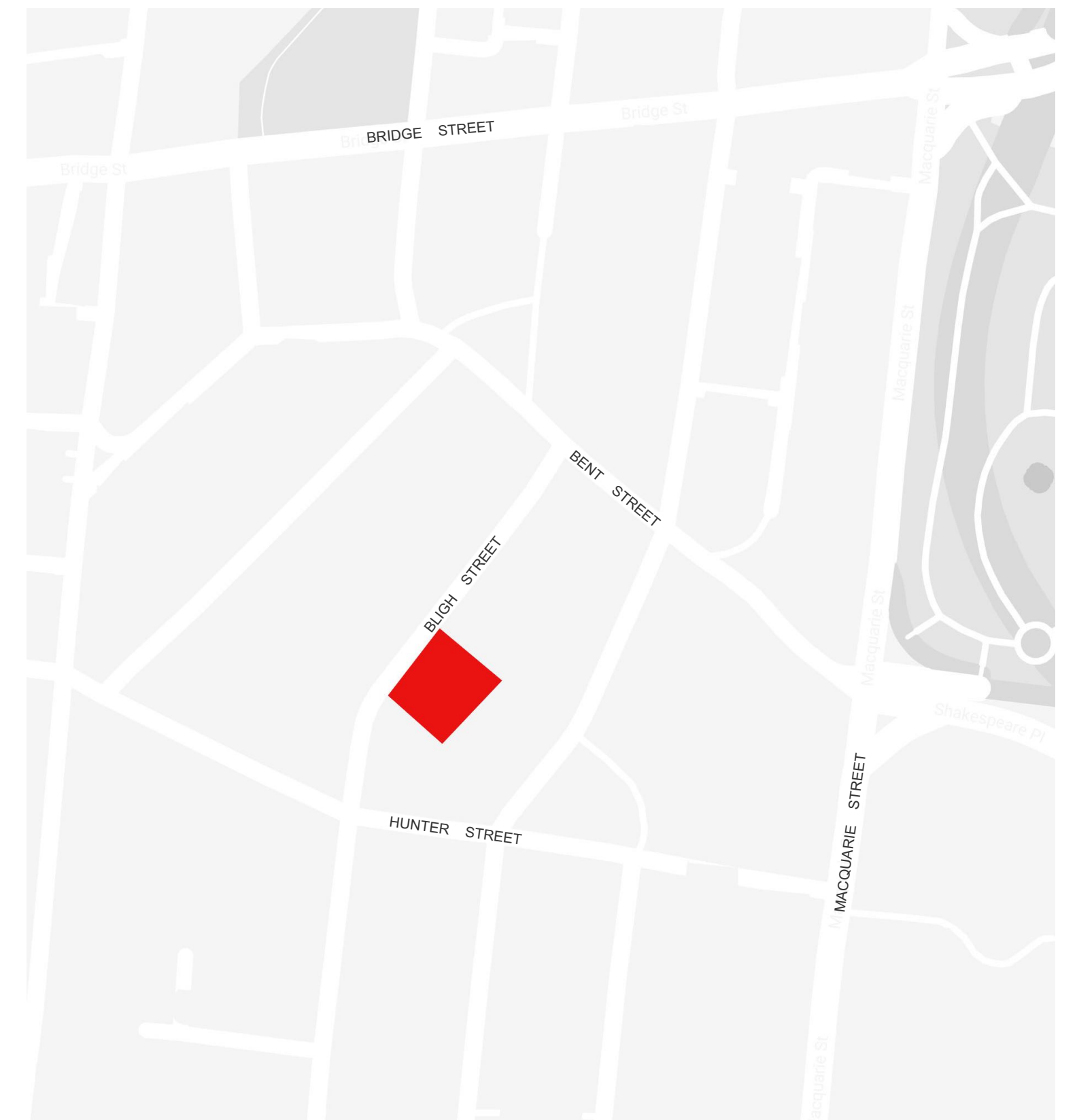
* Service location on plans are indicative only. *360 Degrees Landscape Architects Pty Ltd* accepts no responsibility for the accuracy of service locations shown or for services not shown. It is the responsibility of the contractor to determine service locations prior to the commencement of work, including contacting *Dial Before You Dig* and performing on site service locations. Locate and protect all services on site and in adjacent public domain. Any damages to services and associated damages remains the responsibility of the contractor and shall be rectified at no cost to the client or any other party.

* All adjoining property elements including but not limited to buildings, walls, trees and paving to be protected. Damaged elements remain the responsibility of the contractor and shall be rectified at no cost to the client or any other party. Existing trees to be retained are to be protected to Council and Project Arborist's requirements. No vehicular traffic, stockpiling or storage of materials within Tree Protection Zones (TPZs).

* No responsibility will be taken by *360 Degrees Landscape Architects Pty Ltd* for any variations in design, construction method, materials specified and general specifications without permission from the Project Landscape Architect.

* This Drawing is copyright to *360 Degrees Landscape Architects Pty Ltd*.

LOCATION PLAN



Rev	Amendment	Date	By
A	Preliminary	15.08.19	HTS
B	Preliminary	27.09.19	HTS
C	Final	08.10.19	HTS
D	SSDA Submission	15.12.22	LB

PRELIMINARY
NOT FOR CONSTRUCTION

IMPORTANT NOTES:
Do not scale from drawings.
All dimensions to be brought to the attention of the Project Landscape Architect.
Larger scale drawings and written dimensions take preference. All dimensions to be unless otherwise stated.
Use figured dimensions only.
Verify all dimensions on site before the commencement of any works.
Consent to work shall be obtained from the relevant authority.
All work shall be carried out in accordance with BCA, BSA and Local Government Regulations.
Structural details shall be subject to Engineer's Specifications.
Drainage & Water Feature Details shall be subject to Hydraulic Engineer's Specifications.
All work shall be carried out in a professional manner by Qualified Tradesmen according to Landscape Drainage and Construction Specifications.
No responsibility will be taken by 360 Degrees Landscape Architects Pty Ltd for any variations in design, construction method, materials specified, and general specifications without permission from the Project Engineer or Landscape Architect.
This Drawing is copyright to 360 Degrees Landscape Architects Pty Ltd.

CLIENT
SC Capital Partners
ARCHITECT
Woods Bagot

SCALE
N/A @ A1

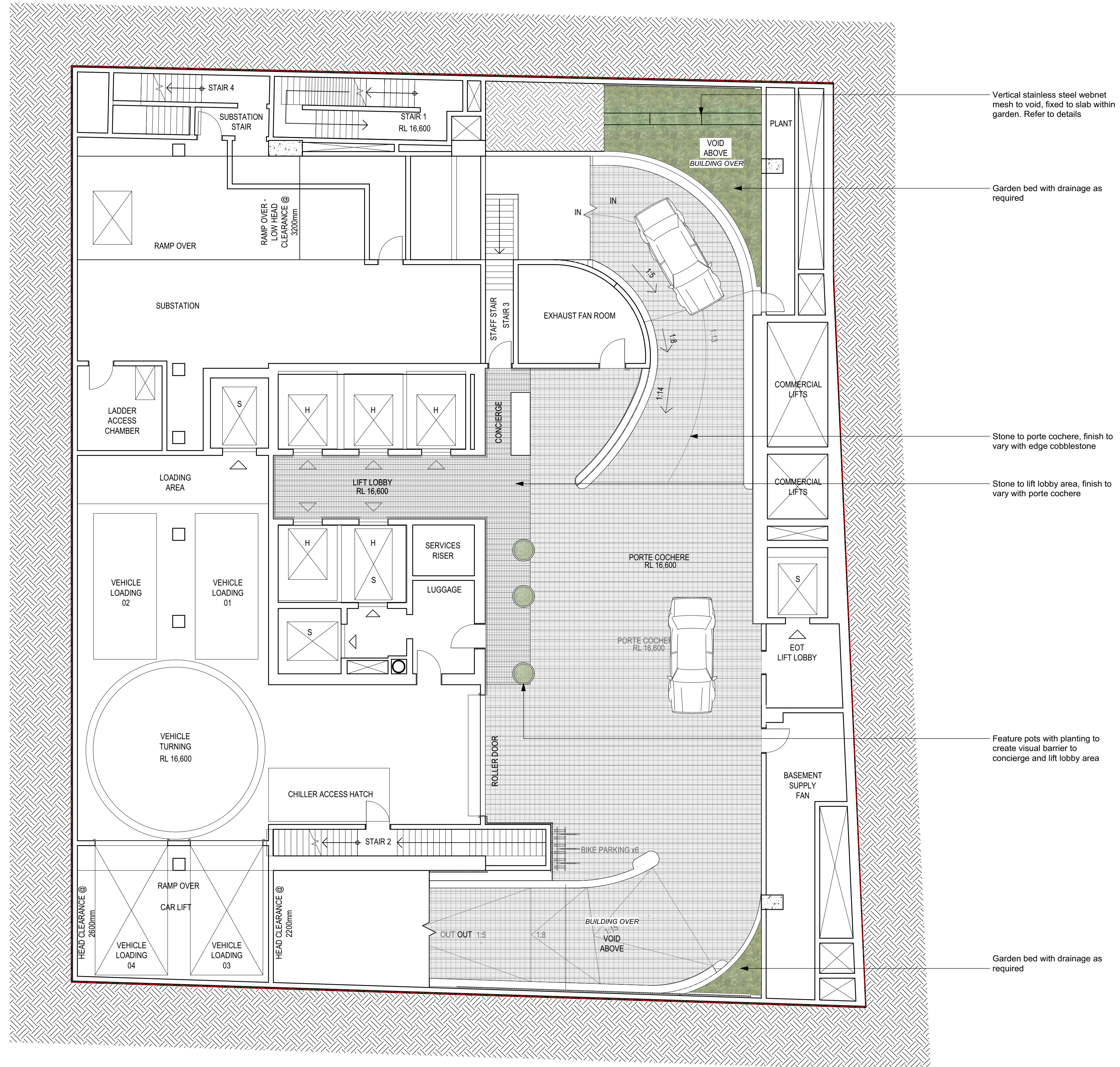
CHECKED
LB
DRAWN
HTS
ISSUED FOR
SSDA

DWG. TITLE
Cover Page & Drawing Schedule

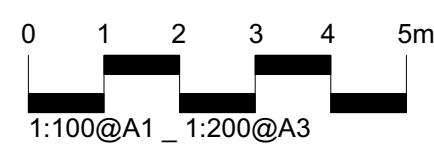
PROJECT
4-6 Bligh Street, Sydney

360°
Level 1, 1 Mary's Place
Surry Hills, 2010
P 02 9332 3601
W 360.net.au
ABN 90 146 901 322

L-00



Rev	Amendment	Date	By
A	Preliminary	15.08.19	HTS
B	Preliminary	27.09.19	HTS
C	Final	08.10.19	HTS
D	SSDA Submission	15.12.22	LB



IMPORTANT NOTES:

- Do not scale from drawings
- All discrepancies to be brought to the attention of the Project Landscape Architect
- Dimensions are given in feet and inches (dimensions take preference. All dimensions in mm unless otherwise stated)
- All line dimensions and R/S is needed
- Use Imperial dimensions only
- Vary all dimensions on site before the commencement of any works
- Consultations shall include and not be limited to:
- All work shall be carried out in accordance with A.S.A. SOA and local Government Regulations.
- All Details shall be subject to approval by the Engineer
- Drainage & related Feature Details shall be subject to Hydraulic Engineer's Specifications.
- All work shall be carried out in a professional manner by Qualified Tradesman according to Landscape Drainage and Engineering's Specifications
- No responsibility will be taken by 360 Degrees Landscape Architecture Pty Ltd for any variations in design, construction or materials from the original specifications without the approval from the Project Engineer or Landscaper
- This drawing is copyright to 360 Degrees Landscape Architecture Pty Ltd.

CLIENT	SC Capital Partners
ARCHITECT	Woods Bagot

SCALE
1:100 @ A1

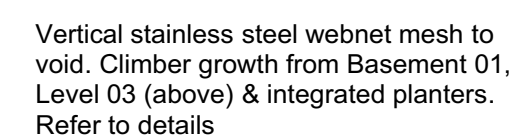
CHECKED	
LB	

DRAWN
HTS

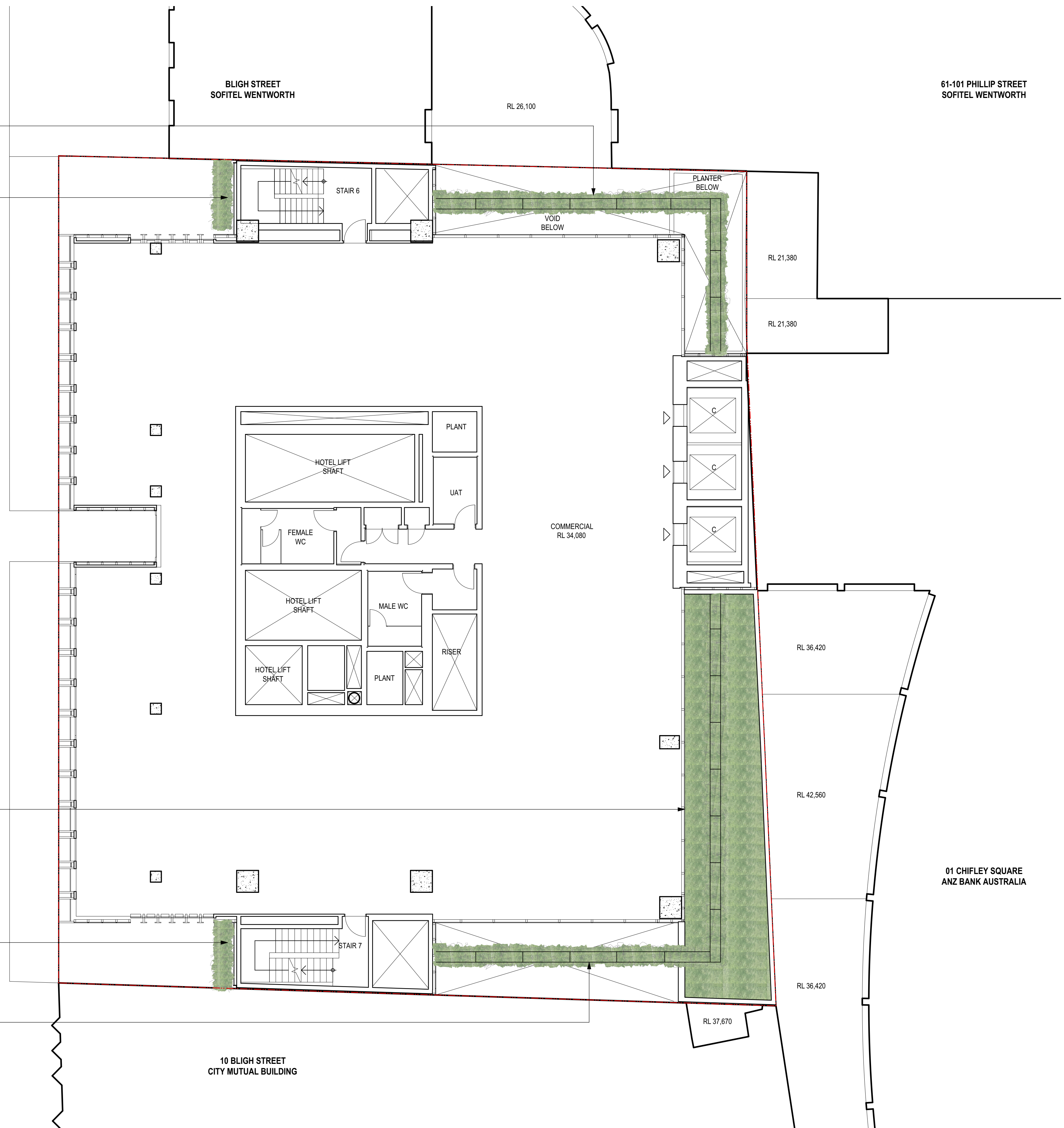
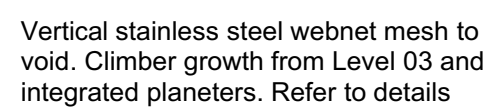
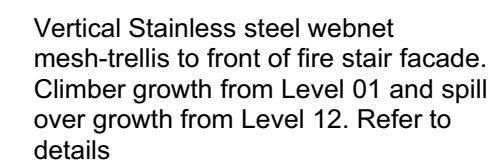
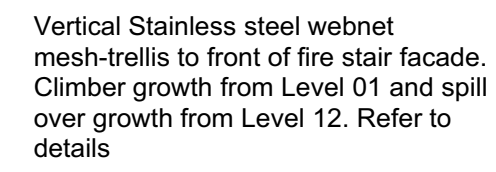
ISSUED FOR
SSDA

DWG. TITLE
Landscape Plan - Basement 01

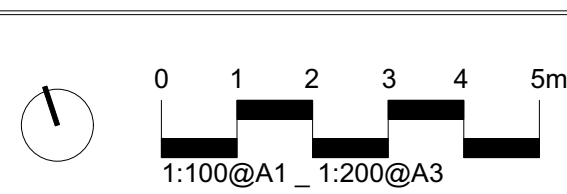
PROJECT
4-6 Bligh Street, Sydney



PROJECT
4-6 Bligh Street, Sydney



Rev	Amendment	Date	By
A	Preliminary	15.08.19	HTS
B	Preliminary	27.09.19	HTS
C	Final	08.10.19	HTS
D	SSDA Submission	15.12.22	LB



IMPORTANT NOTES:

Do not scale from drawings

All discrepancies to be brought to the attention of the Project Landscape Architect

Larger scale drawings and within dimensions take preference. All dimensions in run unless otherwise stated.

All line dimensions and R/Ls in metres.

Use figured dimensions only.

Vary all dimensions on site to better convenience of any works.

Contractors shall locate and construct in accordance with the drawings.

All work shall be carried out in accordance with ASA, BCA and Local Government Regulations.

Structural Details shall be subject to Engineer's Specifications.

Craneage & Slaters Features Details shall be subject to Hydraulic Engineer's Specifications.

All work shall be carried out in a professional manner by Qualified Tradesman according to Landscape Drawing and Engineering Standards.


No responsibility will be taken by 360 Degrees Landscape Architects Pty Ltd for any variations in design, construction method, materials specified, and general specifications without permission from the Project Engineer or Landscape Architect.

This Drawing is Copyright to 360 Degrees Landscape Architects Pty Ltd.

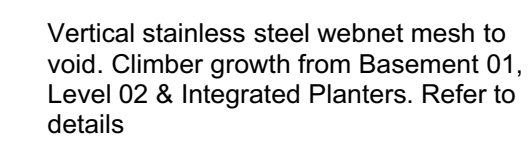
SCALE
1:100 @ A1

ISSUED FOR
SSDA

PROJECT
4-6 Bligh Street, Sydney

360 
 Unit 1, 1 Mary's Place
 Surry Hills, 2010
P 02 9332 3601
W 360.net.au
N 90 146 901 322

1



Vertical Stainless steel webnet
mesh-trellis to front of fire stair facade.
Refer to details

Garden bed planter to roof
of Fire stairs.

1200mm High pool-safe
balustrade to Level 57 pool
surround. Refer to
architect's documentation

Swimming pool, refer to architect's documentation

Perimeter planter to pool,
refer to details.

Blue hatched area depicts proposed location for solar panels - top of commercial lift shaft

Pool deck. Refer to architect's detail

Trees in 8.5M x 1.5M planter flush with with pool deck. Extent of planter shown in grey dashed line. 1.2M clearance to building facade

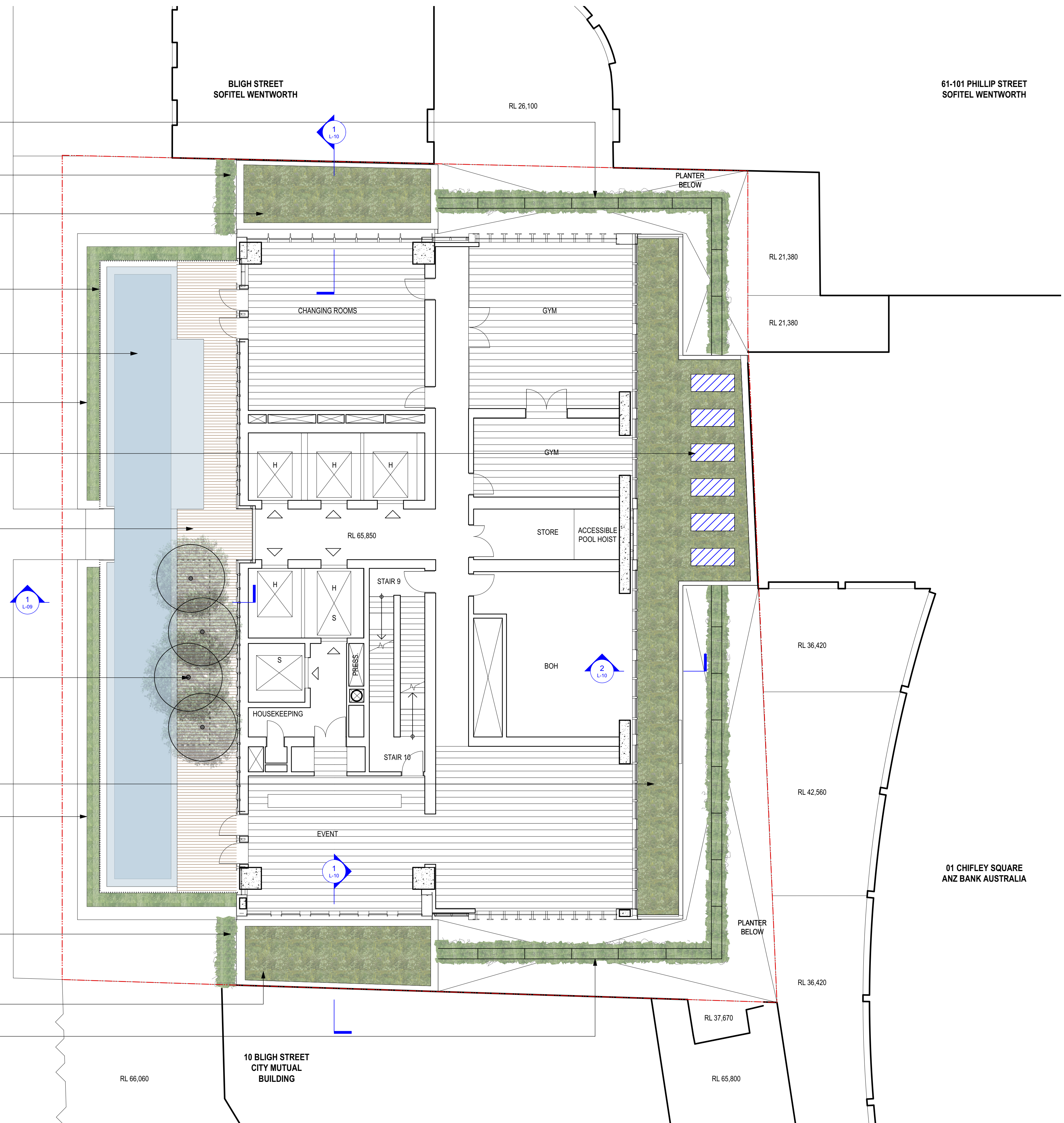
Garden Bed planter to roof.

Perimeter planter to pool,
refer to details.

Vertical Stainless steel webnet
mesh-trellis to front of fire stair facade.
Refer to details

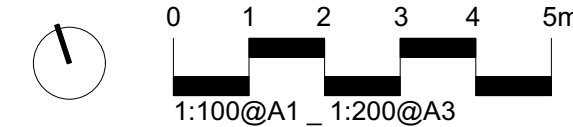
Garden bed planter to roof of Fire stairs.

Vertical stainless steel webnet mesh to void. Climber growth from Level 03 and integrated planters. Refer to details



PRELIMINARY
NOT FOR CONSTRUCTION

Rev	Amendment	Date	By
A	Preliminary	15.08.19	HT
B	Preliminary	27.09.19	HT
C	Final	08.10.19	HT
D	SSDA Submission	15.12.22	LB



IMPORTANT NOTES:

- Do not scale from drawings.
- All discrepancies to be brought to the attention of the Project Landscape Architect prior to construction.
- Verify all dimensions and within dimensions take preference. All dimensions in m unless otherwise stated.
- All free dimensions and R/Ls in metres.
- Verify square dimensions only.
- Verify all dimensions on site before the commencement of any works.
- Contractors shall locate and protect all services prior to construction.
- Work shall be carried out in accordance with ASIA, BCA and Local Government Regulations.
- Structural Details shall be subject to Engineer's Specifications.
- Drainage & Water Feature Details shall be subject to Hydraulic Engineer's Specifications.
- All work shall be carried out in a professional manner by a suitably qualified tradesman according to Landscape Drawing and Engineer's Specifications.
- Contractors shall obtain a permit from 360 Degrees Landscape Architects Pty Ltd for any variations in design, construction method, materials specified, and general specifications without permission from the Project Engineer or Landscape Architect.

This Drawing is copyright to 360 Degrees Landscape Architects Pty Ltd.

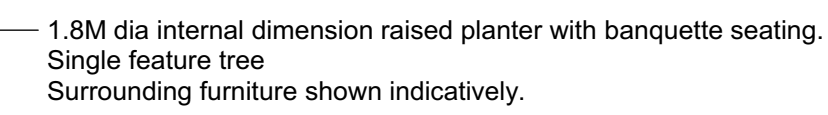
CLIENT	SC Capital Partners
ARCHITECT	Woods Bagot

SCALE
1:100 @ A1

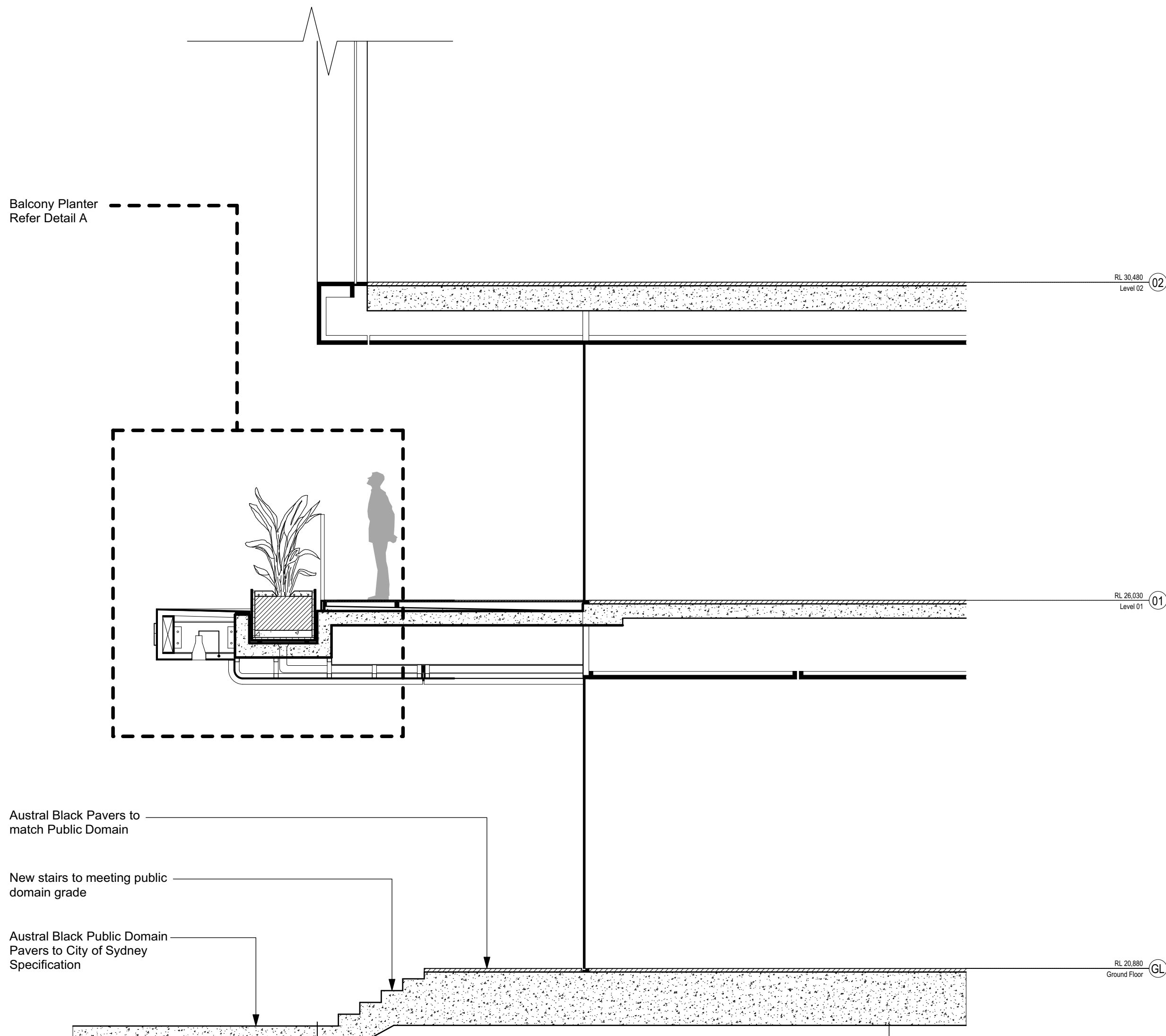
	CHECKED LB
	DRAWN HTS
	ISSUED FOR SSDA

DWG. TITLE
Landscape Plan - Level 12

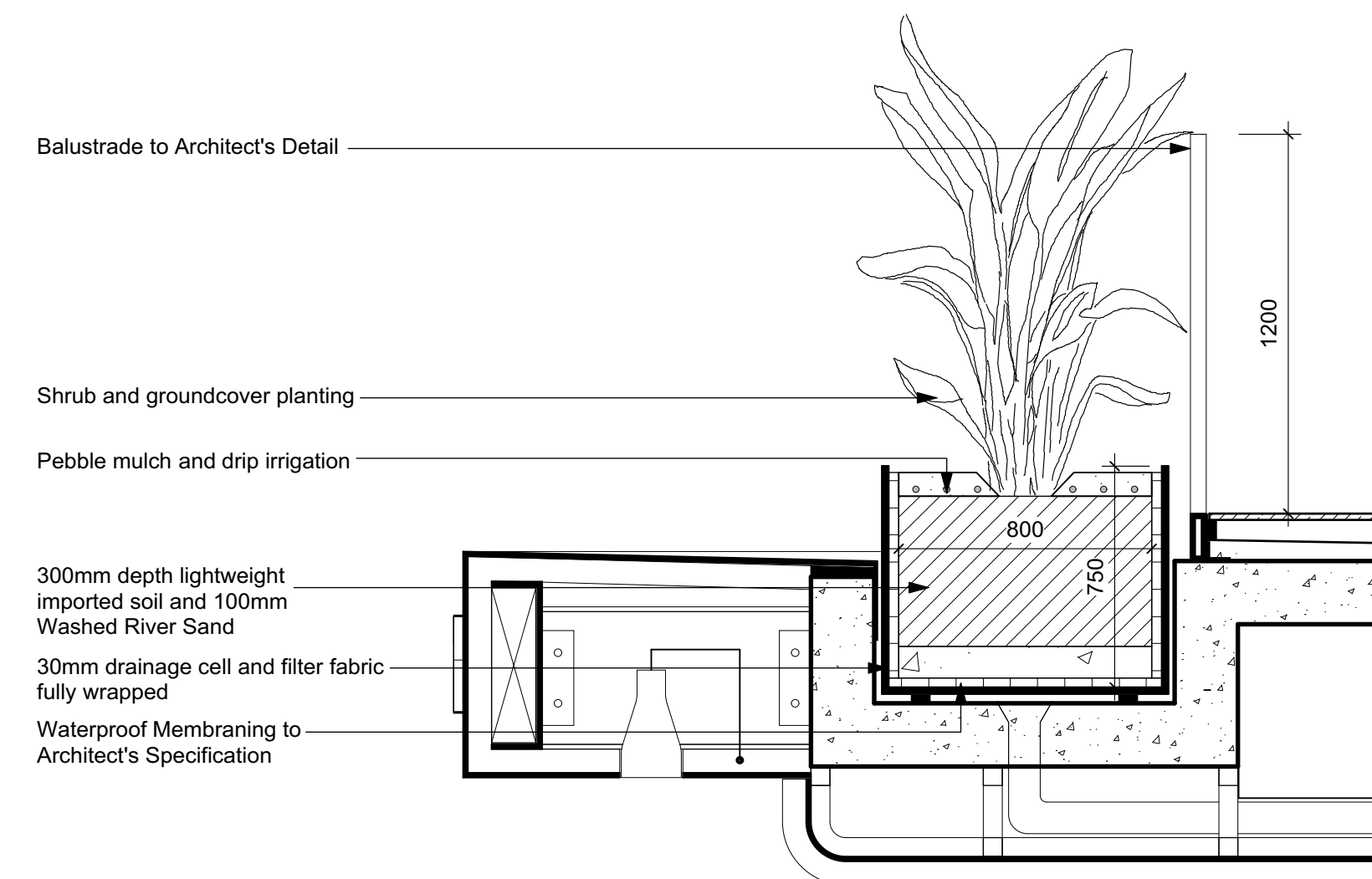
PROJECT
4-6 Bligh Street, Sydney



L-07



1 Ground Floor & Level 01 - Western Section
1:50



2 Detail A - Balcony Planter
1:20

PRELIMINARY
NOT FOR CONSTRUCTION

Rev	Amendment	Date	By
A	Preliminary	15.08.19	GD
B	Preliminary	16.08.19	GD
C	Preliminary	27.09.19	HTS
D	Final	08.10.19	HTS
E	SSDA Submission	15.12.22	LB

IMPORTANT NOTES:
All dimensions are to be brought to the attention of the Project Landscape Architect.
Landscape drawings are not to be used for construction without the written approval of the Project Landscape Architect.
Use of dimensions is not to be used for construction without the written approval of the Project Landscape Architect.
All work shall be carried out in accordance with the City of Sydney Local Government Regulations.
All work shall be carried out in accordance with the City of Sydney Local Government Regulations.
All work shall be carried out in accordance with the City of Sydney Local Government Regulations.
The responsibility for the design and construction of the landscape shall remain with the Project Landscape Architect.
This drawing is copyright to 360 Degrees Landscape Architects Pty Ltd.

CLIENT
SC Capital Partners
ARCHITECT
Woods Bagot
SCALE
A/S @ A1

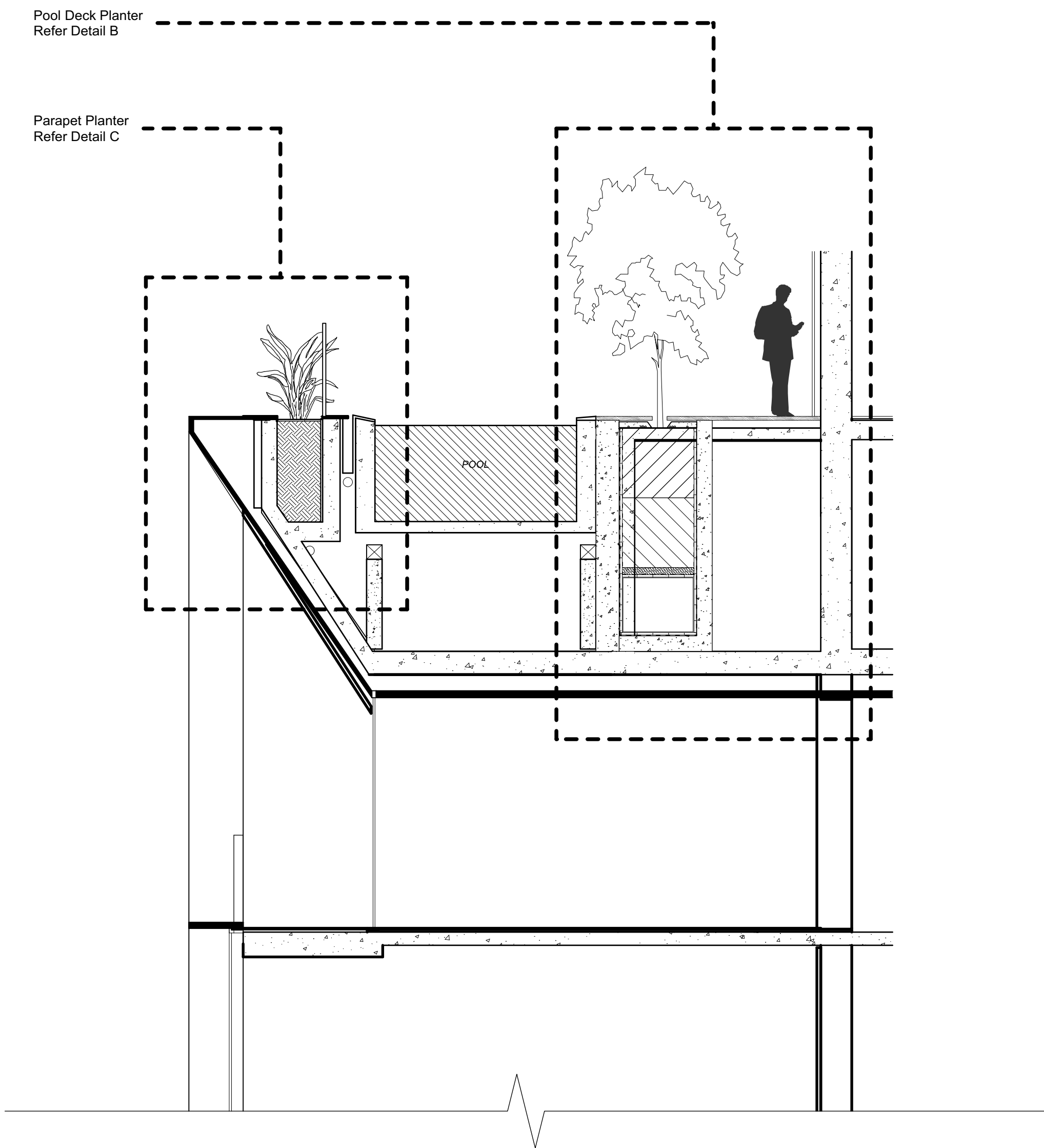
CHECKED
DB
DRAWN
GD
ISSUED FOR
SSDA

DWG. TITLE
Landscape Sections 1
PROJECT
4-6 Bligh Street, Sydney

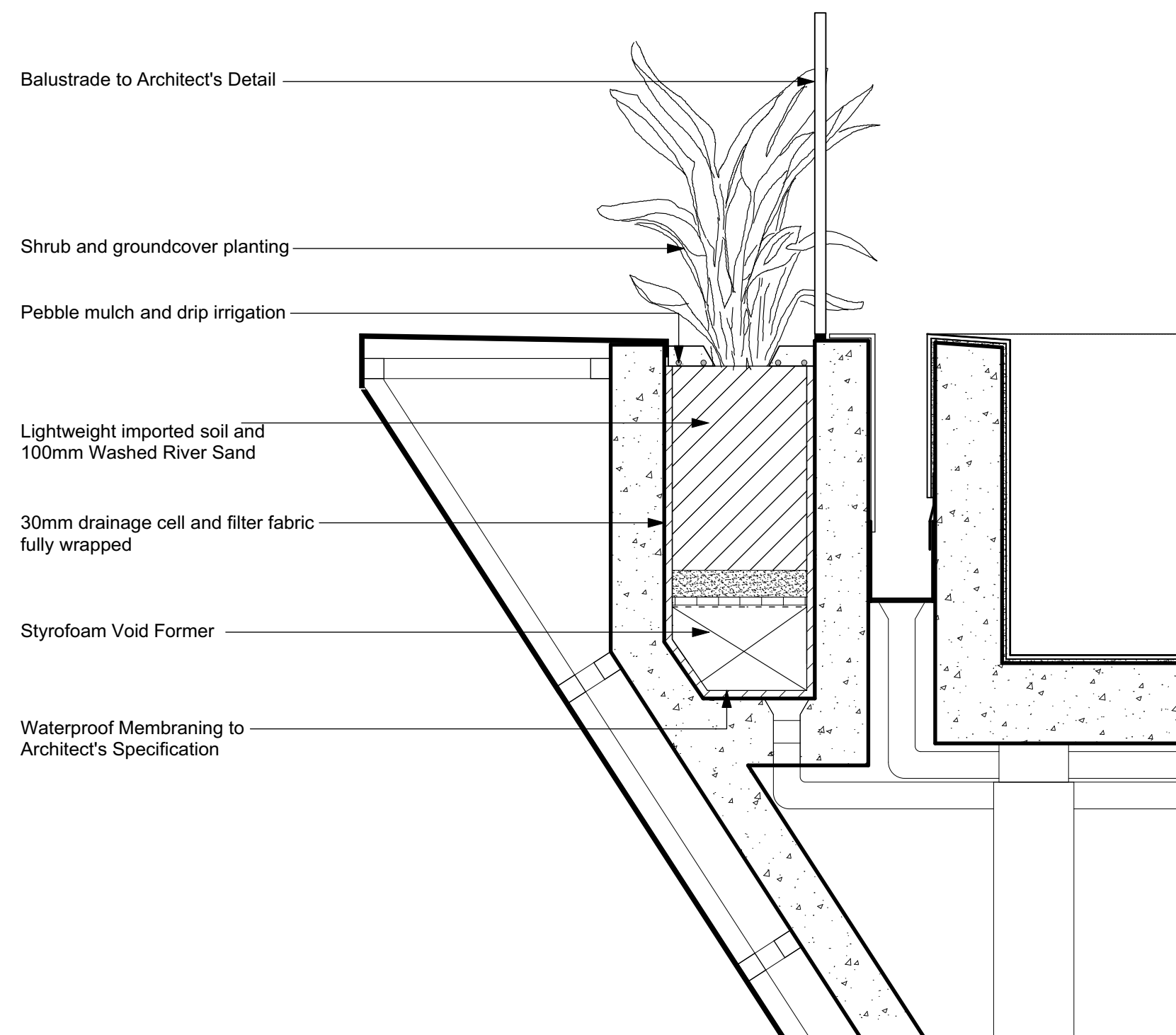
360°
Level 1, 1 Mary's Place
Surry Hills, 2010
P 02 9332 3601
W 360.net.au
ABN 90 146 901 322

L-08

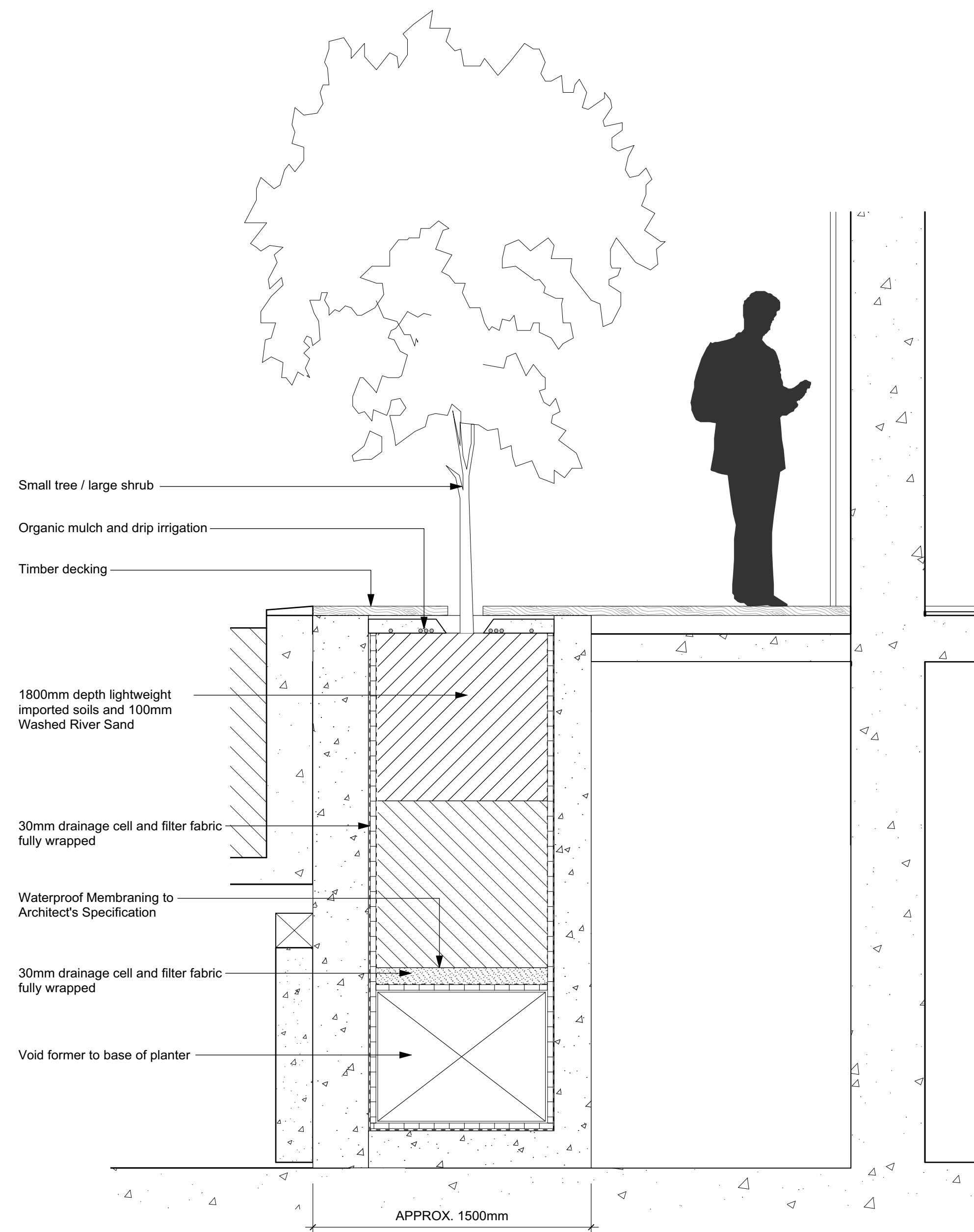
1 Level 12 - Western Section
1:50



3 Detail C - Parapet Planter
1:20



2 Detail B - Pool Deck Planter
1:20



PRELIMINARY
NOT FOR CONSTRUCTION

Rev	Amendment	Date	By
A	Preliminary	15.08.19	GD
B	Preliminary	16.08.19	GD
C	Preliminary	27.09.19	HTS
D	Final	08.10.19	HTS
E	SSDA Submission	15.12.22	LB

IMPORTANT NOTES:
All dimensions to be brought to the attention of the Project Landscape Architect.
Landscape drawings are not to be used for construction without the written consent of the Project Landscape Architect.
Use of drawings is limited to the purpose for which they were prepared.
All works shall be carried out in accordance with the relevant Australian Standards and Regulations.
Drawings shall be subject to the Project Engineer's approval.
The responsibility for the design and construction of the landscape shall remain with the Project Landscape Architect.
This drawing is copyright to 360 Degrees Landscape Architects Pty Ltd.

CLIENT
SC Capital Partners

ARCHITECT
Woods Bagot

SCALE
A/S @ A1

CHECKED
DB

DRAWN
GD

ISSUED FOR
SSDA

DWG. TITLE
Landscape Sections 2

PROJECT
4-6 Bligh Street, Sydney

360°
Level 1, 1 Mary's Place
Surry Hills, 2010
P 02 9332 3601
W 360.net.au
ABN 90 146 901 322

L-08

