

The King's School

North Parramatta Campus SSDA

SEARs phase communications and engagement

Outcomes report, October 2023

Contents

1. Project background	3
2. SSD-48497708 SEARs Requirements.....	4
3. TSA Management’s Role in the Project	5
4. Stakeholder Engagement	6
5. Summary of Consultation	10
Appendix A – Key Issues Register	16
Appendix B – Feedback Received Directly by The King’s School	22
Appendix C – Letters	28
Appendix D – Community Session Info Boards	32

1. Project background

TSA Management was engaged by The King's School in July 2022 to provide communication and engagement support for the school's North Parramatta campus State Significant Development Application (SSDA) (SSD-48497708).

The SSDA's scope was:

Concept development application for the comprising:

1. Concept Proposal for the provision of new and upgraded facilities, including:

- Building envelope for a new Sports Pavilion within the western sports field precinct (subject to further detailed approval).
- Building envelope for a new Boarding House within the northern residential precinct to the north of the Doyle Sports Fields and adjacent building envelope for Staff Quarters (subject to further detailed approval).
- Building envelope for a new Day Boy House between Dalmas House and Burkitt House, including the associated relocation of Ryrie Road (subject to further detailed approval).
- Earthworks and the associated demolition of existing buildings and structures, and removal of trees and landscaping.
- Staged increase in staff and student numbers.
- Detailed Stage 1 works (as outlined below).

2. Detailed Stage 1 works, including:

- Earthworks and the associated demolition and existing buildings and structures.
- Traffic upgrade works including the construction of a new vehicular entrance into the site from Masons Drive, new drop-off pick up facilities, internal access roads and increased car parking and bus parking.
- The construction of a new Staff Residence Building comprising residences for staff and their families within the Senior School Boarding Precinct.
- The construction of a new building for Science, Technology, Engineering, Arts, and Maths (the 'STEAM building') within the Senior School and associated landscaping.
- The staged construction of new buildings required to upgrade the Preparatory School, including:
 - Construction of a new Performing Arts and Music Centre comprising a dedicated performance space and music practice rooms to the northwest of Horrocks Road.
 - Construction of a new General Learning Unit building comprising additional classrooms / general learning spaces adjacent to the existing dam.
 - Upgrades to pedestrian access throughout the school.
 - Staged increase in staff and student numbers.
- The removal and replacement of trees and associated landscaping.

2. SSD-48497708 SEARs Requirements

The Secretary's Environmental Assessment Requirements (SEARs) were issued by the Department of Planning and Environment on 13 October 2022 and included for both the Concept Proposal and Stage 1 Works a requirement to:

- Detail engagement undertaken and demonstrated how it was consistent with the Undertaking Engagement Guidelines for State Significant Projects.
- Detail how issues raised, and feedback provided have been considered and responded to in the project.
- In particular, applicants must consult with:
 - the relevant Department Assessment team,
 - relevant local councils,
 - any relevant agencies including Transport for NSW,
 - Registered Aboriginal parties and
 - the community.

As the requirements for the two components of the project were identical, they were consulted together as one program of work, to provide stakeholders and the community with an all-encompassing view of The King's School's plans for its North Parramatta campus.

RESPONSE TO SEARS

SEAR's item	Reference within this report
Detail engagement undertaken and demonstrate how it was consistent with the <i>Undertaking Engagement Guidelines for State Significant Projects</i> .	The engagement strategy was prepared and implemented to ensure The King's School delivered an engagement program consistent with DPE's Undertaking Engagement Guide: Guidance for State Significant Projects. Refer to Section 4 of this report for more detail.
Detail how issues raised, and feedback provided have been considered and responded to in the project. In particular, applicants must consult with	
The relevant Department Assessment team	The King's School engaged with relevant assessment teams, including Planning Assessment Team at DPE. Refer to the project's Environmental Impact Statement. The King's School also engaged and the Government Architect of NSW with further detail available in the project's Architecture Design Statement.
Relevant local councils	The King's School engaged with the relevant local Council, Parramatta City Council. Refer to Section 4 of this report for more detail
Any relevant agencies including Transport for NSW	The King's School engaged with relevant agencies, including Transport for NSW.

	Refer to Sections 4 of this report with further detail located in the projects Transport and Accessibility Impact Assessment.
Registered Aboriginal parties	The King's School engaged with Registered Aboriginal parties with further details located in the projects Aboriginal and Cultural Heritage Assessment Report.
The community	<p>The King's School engaged with the community, particularly people or groups likely to be impacted by or with an interest in the project.</p> <p>Refer to Sections 4 of this report for further detail.</p>

3. TSA Management's role in the project

TSA has provided support producing and distributing communication material in conjunction with school personnel, attended meetings with key stakeholders such as local state and federal MPs, neighbouring schools and the community and designed and delivered a series of community information sessions targeted at those who live both within and surrounding The King's School's campus on Pennant Hills Road in North Parramatta.

TSA management has also provided guidance around additional meetings with key stakeholders conducted by other expert consultants and project managers engaged by The King's School.

4. Stakeholder Engagement

As part of our ongoing efforts to ensure transparency and address the concerns of our valued stakeholders and community members – schools’ staff, parents, students, and the local community, we have diligently compiled a record of all engagement, queries, suggestions, and feedback received during the consultation process. Details of which is provide below.

4.1 Website

The below has appeared on The King’s School website since 7 September 2022.

Our Campus Development

On Monday 22 August 2022, a submission of a request for Secretary’s Environmental Assessment Requirements (SEARs) related to a proposed redevelopment of The King’s School North Parramatta Campus was lodged.

The King’s School has been a member of the Greater Parramatta community for almost 200 years and has always taken its responsibilities to all communities within and surrounding the school very seriously. That includes the school’s duties as a custodian of its historic property and as a neighbour to surrounding residents, schools, churches, and businesses.

The King’s School has always provided state-of-the-art teaching and extra-curricular facilities and is excited about the opportunities a range of new facilities will provide for current and future students, as well as ensuring King’s continues to attract and retain the best staff. The school’s executive and council have given careful consideration to the most appropriate way to deliver those improvements and believe completing these projects as part of a consolidated masterplan will deliver the greatest benefit to the school and those we share our broader community with.

We have listened to feedback from the community and amended the proposal in several areas, including traffic management arrangements. Plans have also been amended to reduce impact on riparian zones on the school campus.

The State Significant Development pathway also delivers greater consultation and a more transparent and rigorous environmental impact assessment than individual approvals for each component of the project.

Delivering the broad scope of work as part of a consolidated State Significant Development Application will also allow local community members to easily review and provide feedback on all major school development initiatives in one place.

The project is currently at the concept design stage, and we look forward to discussing our plans with all members of the community at the appropriate times. Consultation will be ongoing throughout the design process and will help to guide detailed design.

The first community consultation group is scheduled for Thursday 24 November 2022 from 6.00 to 8.00pm. This session will be held in Horrocks Hall, located at the Preparatory School.

Please direct questions or other inquiries about the proposed redevelopment to improve@kings.edu.au.

4.2 Announcement to school community

On 7 September 2022, the below notice of the project was communicated to The King's School community on the school's communication portal, KingsNet:

The King's School, North Parramatta Campus Redevelopment

Dear Staff,

The following KingsNet notice was distributed this afternoon to all parents across all three campuses.

We are excited to announce a request for Secretary's Environmental Assessment Requirements (SEARs) related to a proposed redevelopment of The King's School North Parramatta Campus has been submitted by The King's School.

The King's School has been a member of the Greater Parramatta community for almost 200 years and has always taken its responsibilities to all communities within and surrounding the School very seriously. That includes the School's duties as a custodian of its historic property and as a neighbour to surrounding residents, schools, churches, and businesses.

The King's School has a proud tradition of providing state-of-the-art teaching and extra-curricular facilities and is excited about the opportunities a range of new facilities will provide for current and future students, as well as ensuring King's continues to attract and retain the best staff. The School's Executive and Council have given careful consideration to the most appropriate way to deliver those improvements and believe completing these projects as part of a consolidated master plan will deliver the greatest benefit to the School and those we share our broader community with.

We have listened to feedback from the community and amended the proposal in several areas, including traffic management arrangements. Plans have also been amended to reduce the impact on riparian zones on the school campus.

The State Significant Development pathway also delivers greater consultation and a more transparent and rigorous environmental impact assessment than individual approvals for each component of the project.

Delivering the broad scope of work as part of a consolidated State Significant Development Application will also allow local community members to easily review and provide feedback on all major school development initiatives in one place.

The project is currently at the concept design stage, and we look forward to discussing our plans with all members of the community at the appropriate times. Consultation will be ongoing throughout the design process and will help to guide detailed design.

Soon we will invite you to an information session dedicated to The King's School community, where you can learn more about the project. Furthermore, we will also host an information session for the broader community.

We will keep you updated.

Frequently asked questions can be accessed from the School's website at <https://www.kings.edu.au/discovering/campus-development/>. Please direct questions or other inquiries about the proposed redevelopment to improve@kings.edu.au.

*Yours sincerely,
Mr Tony George
Headmaster - The King's School*

4.3 Letter to community

On Friday 9 September, a letter (Appendix C. Section 1) with the below wording was distributed to **1,210 surrounding homes and 18 businesses**. See Figure 1 for distribution map.

Dear Residents of North Parramatta

I am writing to you on behalf of The King's School, to notify you about the submission of a request for Secretary's Environmental Assessment Requirements (SEARs) related to a proposed upgrade of The King's School North Parramatta Campus.

The King's School has been a member of the Greater Parramatta community for almost 200 years and has always taken its responsibilities to all communities within and surrounding the School very seriously. That includes the School's duties as a custodian of its historic property and as a neighbour to surrounding residents, schools, churches, and businesses.

The King's School has a proud tradition of providing state-of-the-art teaching and extra-curricular facilities and is excited about the opportunities a range of new facilities will provide for current and future students, as well as ensuring King's continues to attract and retain the best staff. The School's Executive and Council have given careful consideration to the most appropriate way to deliver those improvements and believe completing these projects as part of a consolidated masterplan will deliver the greatest benefit to the School and those we share our broader community with.

We have listened to feedback from the community and amended the proposal in several areas, including traffic management arrangements. Plans have also been amended to reduce impact on riparian zones on the School campus.

The State Significant Development pathway also delivers greater consultation and a more transparent and rigorous environmental impact assessment than individual approvals for each component of the project.

Delivering the broad scope of work as part of a consolidated State Significant Development Application will also allow you, the members of the local community, to easily review and provide feedback on all major school development initiatives in one place.

The project is currently at the concept design stage, and we look forward to discussing our plans with all members of the community at the appropriate times. Consultation will be ongoing throughout the design process and will help to guide detailed design.

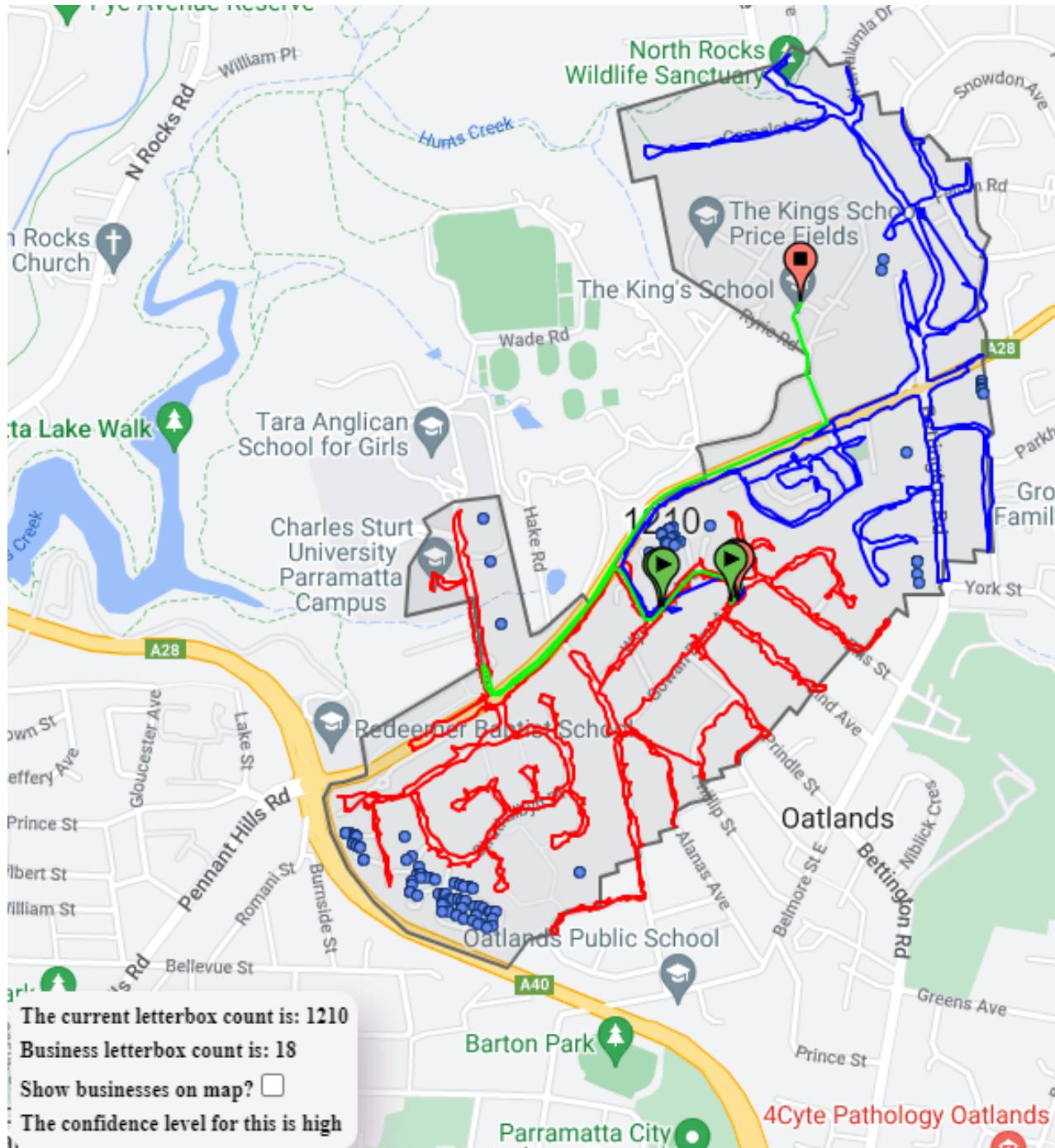
Soon we will invite you to an information session dedicated to the community, where you can learn more about the project.

Frequently asked questions can be accessed from the School's website at <https://www.kings.edu.au/campus-development/>. Further information will be brought to your letterbox. In the meantime, you are welcome to write to us at improve@kings.edu.au.

Yours sincerely

*Mr Tony George
Headmaster*

Figure 1 – Letter to community distribution map



5. Summary of Consultation

Throughout the comprehensive process of consultations, we have engaged with a diverse range of stakeholders, including the communities of adjoining schools, Transport for NSW, Parramatta Council, and others, and ensured that the concerns, insights, and suggestions raised by our stakeholders have been thoroughly considered and thoughtfully addressed in the evolution of the project.

In addition, we have provided a detailed Key Issues Register at Appendix A that encapsulates our commitment to creating a holistic and impactful redevelopment that benefits not only King's school community but also neighbouring schools and the broader community.

A detailed summary of the feedback and queries received directly by the King's School has also been prepared and is provided at Appendix B.

5.1 Consultation with adjoining schools

Consultation was undertaken with the following schools:

Tara Anglican School for Girls – members of the project team met with representatives of Tara on 9 November 2022 and 2 August 2023. Key issue was the construction impacts associated with Masons Drive.

Burnside Public School - members of the project team met with representatives of Burnside Public School on 2 December 2022. The school's main concern is traffic impacts and disruption, specifically Monday to Friday as the school has limited weekend movement.

Redeemer Baptist School - members of the project team met with representatives of Redeemer Baptist School on 8 December 2022. Key issue was the construction impacts associated Pennant Hills Road and Mason Drive, noting that Pennant Hills Road is the only access for parents whereby Masons is staff only. The school has various after-hours activities, for example senior students evening study finishes at 10pm on Wednesday.

The items above were considered and addressed in projects Transport and Accessibility Impact Assessment Report.

5.2 Consultation with Transport for NSW

Consultation was conducted with Transport for NSW and is detailed in section 1.5 of the Transport and Accessibility Impact Assessment Report. This consultation help inform the School Transport Plan (STP) and a Construction Traffic Management Plan (CTMP) which have been prepared to satisfy item 9 of the SEARs requirements for the SSDA.

A summary of the consultation:

On February 8, 2023, TTW initiated contact with TfNSW's Development Assessment team to seek further discussion regarding the project. On February 22, 2023, TfNSW provided a comprehensive list of requirements for the transport and accessibility impact assessment associated with the project. Additionally, TfNSW recommended upgrading the existing left-in, left-out access on Wade Road to include a slip lane.

Following this, on February 23, 2023, TTW requested clarification from TfNSW on various aspects, including staging details and inaccuracies in references to documents from different jurisdictions or development types. TTW also expressed the need for further consultation.

No response has been received from TfNSW regarding TTW's queries. TTW has shared the list of items from TfNSW's email dated February 22, 2023, and indicated the sections of the Transport and Accessibility Impact Assessment where each item has been addressed.

Key information sought from TfNSW encompasses:

- traffic types and volumes during construction and operation (CPTMP),
- peak traffic movements to be generated by the development (Trip Generation Section – 4.7.2),
- parking provisions (Car Parking Design Section – 4.6; Appendix E),
- service vehicle movements (Service Vehicles – Section 4.5),
- internal road network layout (Figure 3.1),
- swept path analysis (Appendix E),
- road safety and key intersections capacity assessment (Intersection Modelling Results – Section 4.8),
- required road upgrades (Mitigation Measures – Section 5),
- public transport integration (Public Transport – Section 2.5),
- measures to mitigate adverse impacts (Section 3.4, School Travel Plan).

Additionally, TfNSW required to prepare a preliminary Construction Pedestrian and Traffic Management Plan (CPTMP) and a drainage study. The CPTMP should assess cumulative impacts, road safety, construction duration, vehicle movements, parking, and temporary pedestrian and cycling access. It has been prepared separately. The drainage study aims to identify pre and post overland flow, site drainage, and the impact on existing infrastructure and is to be prepared by other contractors.

TfNSW advised it is mandated that throughout the EIS preparation, TTW should consult with relevant authorities, service providers, community groups, and affected landowners, particularly with TfNSW. The applicant must also demonstrate alignment with relevant environmental planning instruments and address specific plans and reports outlined in the email as of 22 February 2023.

5.3 Offer of briefing to Parramatta Council

Letter (Appendix C, section 2) with the below wording was sent to Parramatta Council. A briefing was offered (7 September letter from Headmaster) but not taken up.

Submission of a Request for Secretary's Environmental Assessment Requirements (SEARs) by The King's School

Dear Mayor and Members of the City of Parramatta Council

I am writing to you on behalf of The King's School to notify the City of Parramatta Council about the submission of a request for Secretary's Environmental Assessment Requirements (SEARs) related to a proposed redevelopment of The King's School North Parramatta Campus.

The King's School has been a member of the Greater Parramatta community for almost 200 years and has taken its responsibilities to all communities within and surrounding the School very seriously. That includes the School's duties as a custodian of its historic property and as a neighbour to surrounding residents, schools, churches, and businesses.

We would be pleased to provide further briefings for councillors and council officers. If interested in such briefing, please contact the project team via improve@kings.edu.au, and we will make the necessary arrangements.

The King's School has a proud tradition of providing state-of-the-art teaching and extra-curricular facilities and is excited about the opportunities a range of new facilities will provide for current and future students, as well as ensuring King's continues to attract and retain the best staff. The School's Executive and Council have given careful consideration to the most appropriate way to deliver those

improvements and believe completing these projects as part of a consolidated masterplan will deliver the greatest benefit to the School and those we share our broader community with.

We have listened to feedback from the community and amended the proposal in several areas, including traffic management arrangements with respect to Pennant Hills Road at Golian Avenue. Plans have also been amended to reduce impact on riparian zones on the School campus.

The State Significant Development pathway also delivers greater consultation and a more transparent and rigorous environmental impact assessment than individual approvals for each component of the project.

Delivering the broad scope of work as part of a consolidated State Significant Development

Application will also allow local community members to easily review and provide feedback on all major school development initiatives in one place.

The project is currently at the concept design stage, and we look forward to discussing our plans with all members of the community at the appropriate times. Consultation will be ongoing throughout the design process and will help to guide detailed design.

Yours sincerely,

*Mr Tony George
Headmaster*

5.4 Federal Member for Parramatta Andrew Charlton

The briefing on Wednesday 16 November at 11am was attended by TKS Headmaster Tony George, project manager Cassandra Naccarella and communication lead Scott Warren.

Ms Naccarella briefed Mr Charlton on the pipeline of work required to meet demand within the school and the timeline involved between the immediate scope items and those to be contemplated over the coming 20 years.

Ms Naccarella briefed Mr Lee on the consultation underway with neighbouring schools (Tara, Burnside, Redeemer) related to the proposed traffic changes including discussion of a traffic committee that TKS has initiated with representatives of those schools to identify existing traffic challenges in the precinct and work to mitigate them with the traffic changes proposed by TKS.

Mr Warren briefed Mr Charlton on the planned consultation program.

5.5 State Member for Parramatta Geoff Lee

The briefing on Monday 21 November at 11am was attended by TKS Headmaster Tony George, project manager Cassandra Naccarella and communication lead Scott Warren.

Cassandra briefed Mr. Lee on the scope of the SSDA project.

Mr. Lee was interested in the specific location of the STEAM building and details of the performing arts centre.

Ms. Naccarella briefed Mr. Lee on the consultation underway with neighbouring schools (Tara, Burnside, Redeemer) related to the proposed traffic changes.

Mr. Lee recommended the addition of a slip lane at the “Chapel Gate” for vehicles exiting onto Pennant Hills Road.

Mr. George and Mr. Lee discussed the ongoing consideration of a request by Fire and Rescue NSW and the State Emergency Service to build new facilities on The King’s School’s land opposite Gollan Avenue, which would necessitate the installation of traffic signals at that intersection.

Mr. Warren briefed Mr. Charlton on the planned consultation program.

5.6 Community information sessions

On 16 November the community was notified by letter (Appendix C. Section 3) with the below wording was distributed to 1,210 surrounding homes and 18 businesses. See Figure 2 for distribution map.

Dear Residents of North Parramatta

I am writing to you on behalf of The King’s School to notify you of a planned community feedback session to be held at the School soon in relation to the proposed redevelopment of the School’s North Parramatta Campus.

The community information session will take place at The King’s School on Thursday 24 November from 6.00pm to 8.00pm in Horrocks Hall, located at the Preparatory School.

The proposed development, which forms part of a consolidated masterplan, will provide a range of new facilities, as well as significant upgrades to some existing sites to meet our evolving needs and ensure we can continue to provide a world-class education for our students.

We have listened to feedback from the community and amended the proposal in several areas, including traffic management arrangements. Plans have also been amended to reduce impact on riparian zones on the school campus.

We encourage you to come along to our feedback session and hear more about the plans firsthand. The session does not feature any formal presentation, so you can drop in at any time during the session to chat to our project team. For those unable to attend, you can register for an online feedback session by emailing improve@kings.edu.au.

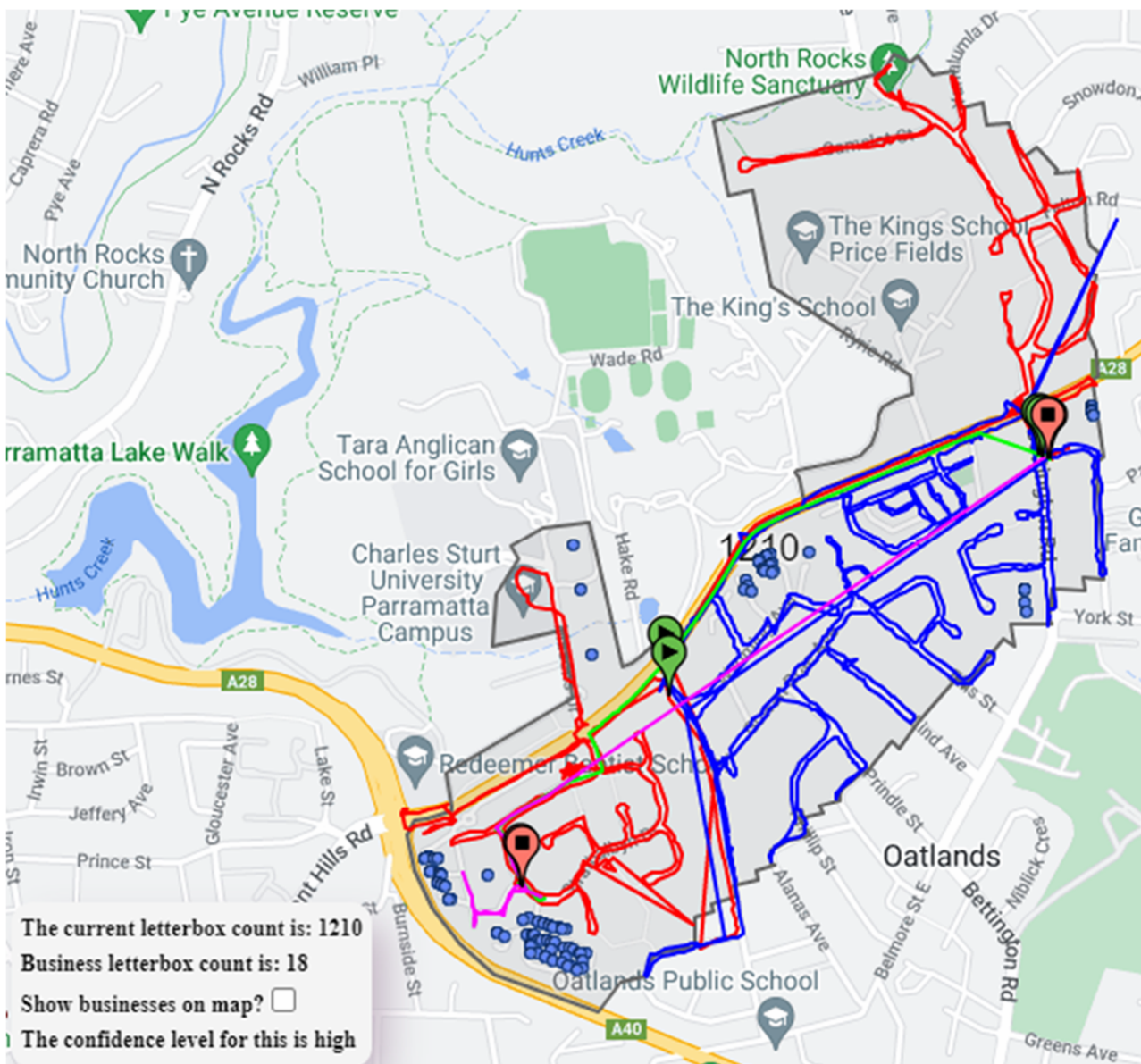
All feedback provided at this stage of the process will be collated and included in our consultation outcomes report, which will be used in the preparation of the Environmental Impact Statement (EIS). Community members will then be provided with another opportunity to provide feedback when the EIS is put on public exhibition next year.

The King's School has been a member of the Greater Parramatta community for almost 200 years and has always taken its responsibilities to all communities within and surrounding the School very seriously. We will continue to work with all stakeholders to ensure we can deliver the best outcomes for students, staff and our broader community.

Please direct questions or other enquiries about the proposed development to improve@kings.edu.au.

Yours sincerely
Mr Tony George
Headmaster

Figure 2 – Letter to community distribution map



November 24

Two community information sessions were held on campus at The Kings School. Copies of information boards are available in appendix B.

School community session 3:00pm to 5:30pm

13 attendees (staff and parents of students)

Issues raised

Parent: *"The ample grass area is a real feature of The King's School. All my boys talk about is playing on "the rec fields" (where STEAM Building is proposed to be built) and it would be a shame to lose that."*

Local community session 6:00pm to 8:00 pm

5 attendees (residents of surrounding community)

Issues raised

Local resident: *"Everything is so contained within such a huge school campus, I'd be surprised if it impacted anyone in the community."*

Local resident: *"It would be great for The King's School to acquire a house on Bettington Road to provide an additional access point to the school for vehicles."*

Local resident: *"Important to stagger school start and finish times and also before and after school sport to spread traffic demand."*

Photos from the November 24 sessions



February 1

School community and campus residents' session 4:00pm to 6:00 pm.

10 attendees

Issues raised

Member of the School community: *How will storage and water harvesting issues be addressed to maintain the efficiency of our maintenance teams, particularly around sporting fields?*

Member of the School community: *How can we restore the palette of landscaping? IE: Re-planting native species to encourage wildlife and manage insect issues.*

Member of the School community: *How will residents be affected by construction? IE: Noise and timing of construction.*

Member of the School community: *Will pathways be constructed around the School?*

Member of the School community: *Heritage listings: gutters around the campus, certain roads and walking tracks, a convict-built dam wall - how will these be protected?*

Member of the School community expressed concerns of the overshadowing of Baker Hake and other nearby residences with the construction of new townhouses, due to existing mould issues.

5.7 Feedback received directly by school

Feedback was also provided to The King's School via the email address that was included on school and broader community information materials.

This feedback is contained in the Appendix B.

5.8 Aboriginal engagement

The King's School engaged with Registered Aboriginal parties with further details located in the projects Aboriginal and Cultural Heritage Assessment Report.

Appendix A. Key Issues Register

Ref. #	Issue raised	Nature of the Issue	Category	School	Action Taken
1	Traffic congestion during the weekdays, particularly on Monday to Friday, potentially affecting daily routines of the school community in a negative way.	Concern	Traffic	Burnside Public School	<p>In response to this concern, the project team took proactive measures by conducting comprehensive traffic studies. These studies aimed to provide an in-depth comprehension of the traffic patterns and congestion specifically on weekdays. The primary objective was to ascertain the underlying factors contributing to the traffic issues and devise strategies that would yield effective results.</p> <p>The insights gleaned from these traffic studies played a pivotal role in shaping a comprehensive approach to tackle the traffic challenges experienced on Masons Road. The subsequent report put forth actionable solutions to address potential future increases in traffic. These solutions encompass modifications to the line markings on Pennant Hills Road as per Sections 3.7 and 4.8.3 of the Transport and Accessibility Impact Assessment.</p>
2	Traffic congestion at the intersection of Masons Road and Pennant Hills Road. Specifically, for the installation of dedicated right turn signals at the junction to alleviate congestion for school-related traffic movements departing from Masons Road. The proposed solution aimed to grant vehicles exiting Masons Road the ability to execute right turns onto Pennant Hills Road with reduced interference from through traffic, ultimately streamlining traffic flow.	Suggestion	Traffic		<p>The project team engaged in a comprehensive evaluation of various options, with the goal of addressing the traffic congestion at the intersection of Masons Road and Pennant Hills Road. Among the considered solutions were alternatives such as alterations to line-marking and the installation of dedicated right turn signals.</p> <p>Through a thorough analysis of each option's feasibility, potential impact, and cost-effectiveness, alterations to line marking emerged as the preferred and optimal solution. The chosen approach involved a careful reconfiguration of the road's line-marking to create dedicated lanes for right-turning vehicles from Masons Road onto Pennant Hills Road. This solution not only improved traffic flow by minimizing conflicts between different traffic movements but also contributed to enhancing safety conditions.</p> <p>Recognizing the importance of community engagement, the project team communicated the line marking changes to the school community and local residents. Transparent and effective communication helped stakeholders understand the purpose and benefits of the alterations, fostering a positive response and cooperation.</p>
3	A potential for significant congestion due to slight fluctuations in traffic patterns especially during special events.	Concern	Traffic	Burnside Public School	<p>Recognizing the importance of addressing this concern to ensure smooth operations and a positive experience for the school and neighbouring community, the project team reviewed the existing masterplan and discovered it did not include any provisions or protocols for addressing congestion during special events.</p> <p>The project team engaged with stakeholders and local community to better understand the traffic concerns and expectations related to special events and conducted a comprehensive analysis of traffic patterns during special events to gain insights into specific challenges and solutions. This assessment aimed to identify potential congestion points, understand the causes of traffic</p>

					<p>fluctuations, determine the extent of impact on traffic flow and whether modifications were necessary to ensure seamless traffic flow during such occasions.</p> <p>The chosen approach of reconfiguration of the road's line-marking on the intersections of Masons Road and Pennant Hills Road improved traffic flow in the area and contributed to enhancing the overall experience for the community members including during the time of special events.</p>
4	A congestion issues affecting the James Ruse Drive off-ramp shed light on the challenges arising from extended queues that reach both the off-ramp and Sutherland Road.	Concern	Traffic	Redeemer Baptist School	<p>The project team embarked on thorough traffic studies undertaken on Masons Drive. These studies enabled them to analyse the flow of vehicles along the James Ruse Drive off-ramp and its neighbouring roads.</p> <p>Collaborating with traffic engineering experts, and by identifying peak congestion hours, bottlenecks, and factors contributing to the queue formation, the project team gained a comprehensive understanding of the issue's complexities and explored potential enhancements to the road configuration in and around the off-ramp area.</p> <p>The insights gleaned from these traffic studies played a pivotal role in shaping a comprehensive approach to tackle the traffic challenges. The subsequent report put forth actionable solutions to address potential future increases in traffic. These solutions encompass modifications to the line markings on Pennant Hills Road and increased private and public bus transport utilisation.</p>
5	Disparity in traffic congestion between afternoons and mornings, impacting the school community's daily routines.	Concern	Traffic	Redeemer Baptist School	<p>The project team initiated a series of traffic studies focused on Massons Drive, with a specific emphasis on understanding the contrasting traffic congestion levels during peak morning and afternoon periods.</p> <p>These studies were essential in providing a data-driven insight into the underlying factors contributing to the observed congestion disparities. By analysing the traffic data, the team identified the key contributing factors that led to the disparity and proposed strategies (including alterations to line marking on Pennant Hills Road and increased utilisation of public and private bus transportation) to distribute traffic more evenly across the day, reducing congestion spikes.</p>
6	Traffic congestion on Pennant Hills Road causing obstruction for vehicles on Masons Drive, impeding their ability to navigate effectively.	Concern	Traffic	Redeemer Baptist School	<p>The project team undertook a series of traffic studies focused on Massons Drive, particularly during peak periods. These studies were aimed at gaining an in-depth understanding of the traffic dynamics at the junction of Pennant Hills Road and Masons Drive, where congestion was particularly acute. The insights from these studies formed the basis for devising strategies to mitigate the obstruction issue.</p> <p>By actively addressing this issue, the project contributed to the enhancement of traffic flow, safety, and overall commuting experience for both the school community and the wider public.</p>
7	Absence of a dedicated right-turn option for vehicles exiting Masons, leading to challenges, particularly for inexperienced P-plate drivers and potentially impacting overall traffic flow.	Concern	Traffic	Redeemer Baptist School	<p>The project team explored various options, including conducting traffic studies of Massons Drive to gain a comprehensive understanding of the traffic patterns and challenges experienced by drivers exiting Masons Drive. These studies aimed to provide a data-driven insight into the impact of the absence of a dedicated right-turn option and the associated challenges.</p> <p>Upon analysing the data from the traffic studies, the project team concluded that alterations to line marking were the preferred and optimal solution to address the concerns. The alterations were tailored to provide a designated and safe right-turn lane for vehicles, facilitating smoother right-turn manoeuvres.</p>

					Recognizing the importance of community engagement, the project team communicated the line marking changes to the school community and local residents. Transparent and effective communication helped stakeholders understand the purpose and benefits of the alterations, fostering a positive response and cooperation.
8	Morning traffic challenges observed on Masons Road, specifically between approximately 7:50 am and 9:00 am, potentially impacting daily commuting experience for the school community in a negative way.	Concern	Traffic	Redeemer Baptist School	<p>To gain a comprehensive understanding of the traffic dynamics and challenges faced on Masons Road during the specified morning hours, the project team conducted traffic studies of Massons Drive. These studies were aimed at collecting accurate data on traffic volume, congestion patterns, and the factors contributing to the observed traffic challenges.</p> <p>Upon careful analysis of the traffic study data, the project team collaborated with traffic engineering experts to strategize and implement line marking adjustments on Masons Road. These proposed alterations will help enhance traffic flow and minimize impacts of any increased traffic. This approach effectively optimized the road space and contributed to a more efficient commuting experience for the school community.</p> <p>Recognizing the importance of community engagement, the project team communicated the line marking changes to the school community and local residents. Transparent and effective communication helped stakeholders understand the purpose and benefits of the alterations, fostering a positive response and cooperation.</p>
9	Afternoon traffic challenges observed on Masons Road, specifically between approximately 2:50 pm and 3:45 pm, potentially impacting daily commuting experience for the school community in a negative way.	Concern	Traffic	Redeemer Baptist School	<p>The traffic studies conducted by the project team were pivotal in gaining a deeper understanding of the traffic patterns, congestion levels, and factors contributing to the observed afternoon traffic challenges. These studies focused on collecting accurate and relevant data during peak periods, allowing the project team to make informed decisions to alleviate the concerns.</p> <p>Based on the insights derived from the studies, the project team proposed a range of strategies to address the afternoon traffic challenges on Masons Road the central of which was implementation of line marking adjustments on Masons Road in collaboration with traffic engineering experts.</p> <p>These alterations provided a designated lane for specific traffic movements, enhancing traffic flow and minimizing potential conflicts between vehicles. This approach effectively optimized the road space and contributed to a more efficient commuting experience for the school community.</p> <p>Recognizing the importance of community engagement, the project team communicated the line marking changes to the school community and local residents. Transparent and effective communication helped stakeholders understand the purpose and benefits of the alterations, fostering a positive response and cooperation.</p>
10	Potential construction of a new TKS link road could divert traffic from the Prep School through Masons Road, raising issues of increased congestion.	Concern	Traffic	Redeemer Baptist School	<p>To comprehensively address the concerns about traffic impacts and the possibility of the link road diverting traffic from the Prep School through Masons Road, the project team undertook a series of traffic studies focused on Masons Drive.</p> <p>These studies were designed to gather data on traffic volume, patterns, and congestion points. The studies encompassed analysing the expected increase in traffic, identifying potential bottlenecks, and evaluating the potential duration and intensity of disruptions. The traffic studies conducted on</p>

					Masons Drive provided valuable insights that guided the formulation of mitigation strategies that anticipated the impact of the new link road.
11	Data collection process, which is deemed non-representative of RBS traffic due to the exclusion of Year 12 activities and major sports events, potentially leading to incomplete understanding of traffic dynamics and requirements.	Concern	Traffic	Redeemer Baptist School	In response to the concern, the project team engaged TTW to assess the accuracy and comprehensiveness of the data collection process. TTW evaluated the data collection process to determine the extent to which it accurately reflected traffic conditions, including the exclusion of Year 12 activities and major sports events. Based on their assessment, the studies had captured traffic conditions as accurately as possible. TTW also emphasized that the overall impact of these concerns was minimal, considering that Year 12 students were still attending school for exams and that the traffic impact of major events, such as Saturday sports, would likely have a greater effect on the main entrance to The King's School rather than Mason's Drive.
12	The presence of a school crossing supervisor, with RBS expressing concerns that this may contribute to issues along Masons Road due to potential disruptions in traffic flow and a lack of efficient platooning measures.	Concern	Traffic	Redeemer Baptist School	<p>The project team engaged in collaborative discussions with the school crossing supervisor, RBS, and traffic management experts. These discussions aimed to find a middle ground that considered both safety and traffic flow concerns. The supervisor's insights were invaluable in understanding the on-ground dynamics and potential solutions.</p> <p>Upon investigation, the project team gained reassurance the safety of the school children was consistently recognized by the school community as the top priority. Therefore, the presence of a school crossing supervisor contributed significantly to enhancing the safety of students while crossing Masons Road, reducing the risk of accidents, and ensuring a secure environment. The supervisor's dedicated efforts and commitment to ensuring the safety of the school community were evident and acknowledged.</p>
13	Accessibility of the TKS opposite Gollan Avenue, with RBS expressing support for this access point due to potential implications for traffic management.	Concern	School access	Redeemer Baptist School	Recognizing the significance of the concern, the project team engaged with stakeholders, including RBS to understand the accessibility needs and the potential impact on traffic management. The project team reviewed the previously submitted access plans and conveyed that the access plans for Gollan Avenue had been previously submitted and not supported.
14	Consideration of utilising Gatehouse Lane as an access route to TKS, noting potential challenges arising from its narrow width.	Query	School access	Redeemer Baptist School	<p>The project team conducted a comprehensive analysis of Gatehouse Lane's access and the feasibility of accommodating the required traffic flow and discovered key restrictions that influenced the decision-making process.</p> <p>They revealed that access to TKS via Gatehouse Lane came with a number of limitations. The lane's access was restricted to "left in, left out" only, meaning vehicles could enter from one direction and exit from the other, with no options for right turns. Furthermore, the lane's narrow width posed challenges for accommodating the significant traffic flow associated with the renovation works and the school community's needs.</p>
15	Potential impacts on traffic flow and congestion along Masons Drive due to the construction activities associated with the project, necessitating mitigation strategies to minimise disruptions for the school community and local residents.	Concern	Construction impacts	Tara Anglican School for Girls	To comprehensively address the concerns about construction-related traffic impacts, the project team has developed a Construction Traffic Management Plan (CTMP) to provide comprehensive approach to managing traffic impact of the project to ensure the development is delivered with minimum disruption to the surrounding community; and undertook a series of mitigation measures, including traffic ad pedestrian control, traffic guidance schemes, construction worker transportation strategy, and driver code of conduct as per Section 5.3 of the CTMP.

16	Tara's requested two lanes instead of four, along with an agreement for the inclusion of a pedestrian footpath.	Request	School access	Tara Anglican School for Girls	<p>Recognizing the significance of the school's input, the project team engaged in a collaborative dialogue with Tara Anglican School for Girls to address their specific needs and preferences. This dialogue facilitated a clear understanding of the school's concerns, priorities, and safety considerations.</p> <p>In alignment with the school's request, the project team updated the entrance road design to a two-lane configuration. This modification not only aligned with the school's preference but also contributed to a safer and more pedestrian-friendly environment.</p> <p>To address the concern for pedestrian safety, the project team incorporated the requested pedestrian footpath as a key component of the entrance road design. This footpath aimed to provide a designated and safe pathway for students, staff, and visitors, enhancing overall safety and accessibility.</p>
17	The need for updates at Tudor House, particularly urgent upgrades to bathrooms, replacement of outdated heating systems dating back to the 80s, and the proposal to transform the pool into an indoor facility, highlighting essential improvements required for modernising the infrastructure and ensuring conducive environment for the school community.	Request	School infrastructure improvement	King's School	Tudor House is outside the scope of the SSDA. The project team communicated the scope of the project to the respective stakeholder. This clarity was essential to ensure that stakeholders understood the areas of focus and the limitations of the project's reach.
18	Inclusion of plans for constructing an indoor swimming pool within the proposal.	Query	School infrastructure improvement	King's School	The swimming pool is outside the scope of the SSDA. The project team communicated the scope of the project to the respective stakeholder. This clarity was essential to ensure that stakeholders understood the areas of focus and the limitations of the project's reach.
19	Plans for enhancement of the soccer fields for senior schools within the proposal.	Query	School infrastructure improvement	King's School	The desire to provide top-tier sports facilities for the school community was met with a comprehensive approach that included the introduction of a new sports pavilion to serve the soccer fields. This combined effort will address the concerns and aspirations for elevated sports infrastructure.
20	An expression of interest to learn more about the proposed new entrance from Masons Drive.	Query	School access	King's School	<p>While plans for the new entrance via Tara from Masons Drive have not yet been finalised, the Project team is committed to keeping stakeholders informed as the project progresses through the relevant stages.</p> <p>Stakeholders will have access to the information regarding the proposed new entrance as soon the State Significant Development Application is submitted and undergoes the public exhibition process.</p>

21	Establishment of an internal public path on the school's side of the heritage fence, aiming to provide students and the public with a safe pedestrian route between bus stops located on the north side of Pennant Hills Road, contributing to enhanced accessibility and safety for pedestrians.	Suggestion	School access	King's School	<p>Recognizing the importance of pedestrian safety and accessibility, the project team engaged with stakeholders and the local community to understand their concerns and aspirations related to the proposed internal public path on the school's side of the heritage fence as well as the path's feasibility, safety implications, and potential impact on the overall campus environment.</p> <p>This comprehensive assessment aimed to ensure that any proposed changes align with project's standards and contribute positively to accessibility and helped determine which proposals would be prioritized for implementation. The internal public path proposal was not included as a part of the priority projects.</p> <p>The project team worked collaboratively with stakeholders to ensure that project priorities were aligned with the broader interests of the school community and the local residents and communicated to them.</p>
22	Shortage of stored water for greenkeepers to use during dry periods brings the need to explore improvements that can ensure an adequate and sustainable water supply for maintaining the school's green spaces.	Suggestion	School infrastructure improvement	King's School	Acknowledging the significance of green spaces for the school community, the project team engaged with greenkeepers, stakeholders, and relevant experts to address the concern and conducted a comprehensive assessment of the existing water supply and storage infrastructure. The proposal was included within the framework of operational school issues to allocate resources and prioritize solutions.
23	Dedicated car park to address the issue of insufficient parking during sports days, aiming to alleviate congestion, improve accessibility, and enhance the overall experience for participants and visitors attending such events.	Suggestion	School infrastructure improvement	King's School	Throughout the process, the project team engaged with stakeholders and the local community to ensure that the proposed increase in parking facilities aligned with their expectations and needs. Transparent communication fostered understanding and cooperation. the project team incorporated an increase in parking facilities into the design. This solution aimed to provide ample space for participants, visitors, and event attendees to park their vehicles comfortably, reducing congestion and enhancing accessibility.
24	Small parent hub facility, designed to provide convenience and comfort for parents visiting the site, offering access to amenities such as toilets, a tea-making area, and workspace to facilitate administrative tasks or work-related activities they may have while waiting for the kids.	Suggestion	School infrastructure improvement	King's School	Parent hub facility is outside the scope of the SSDA. The project team communicated the scope of the project to the respective stakeholder. This clarity was essential to ensure that stakeholders understood the areas of focus and the limitations of the project's reach.
25	Absence of the promised sporting precinct, which has been anticipated for the past four years - raises questions about the status and realisation of this long-awaited facility.	Concern	School infrastructure improvement	King's School	<p>As a tangible step towards fulfilling the community's aspirations for improved sports facilities, the project included construction of a sports pavilion.</p> <p>The sports pavilion was designed to provide amenities that enhance the overall sports experience for students and the wider community.</p>
26	Installation of EV charging ports within the school premises, aiming to cater to the growing demand for EV charging infrastructure among the school community.	Suggestion	School infrastructure improvement	King's School	The proposal is under consideration. Recognizing the importance of supporting sustainable transportation options, the project team engaged with stakeholders, including students, faculty, parents, and the local community to understand the demand and aspirations related to EV charging and conducted the feasibility assessment to determine technical viability and potential locations for installing EV charging ports within the school premises.

Appendix B. Feedback received directly by the King's School

Date Received	Reference #	Time Active	Nature of Correspondence	Category	Acknowledgement Date	Staff to Action Response	Action Taken	Date of Resolution or Determination of TKS	TKS Community/ General Public	Critical/ Supportive	Received by
7/09/2022	1	149 days	<p>To whom it may concern:</p> <p>May I ask when there will be a focus on updating anything at Tudor House in place of parents requiring to donate and attend fundraisers to raise funds to pay for simple developments.</p> <p>Seems rather unfair all the fund from student fees for Tudor get pooled into Kings Sydney the redistributed.</p> <p>Bathrooms need urgent upgrades. Old heating still exists dating back to the 80's. The pool should be made to be indoors. There are many things that do not get attended to.</p> <p>I'm not the only Tudor House parent concerned by this.</p> <p>Something needs to be addressed.</p> <p>Regards Stakeholder 1</p>	Complaint	7/09/2022	GJA	<p>EW acknowledged email and BCC'd GJA</p> <p>"Thank you for your email. I will ensure that your enquiries are shared with the relevant staff"</p>		Parent - Tudor House	Critical	Improve inbox

7/09/2022	2	149 days	<p>Dear madam or sir,</p> <p>After reading through the details on School's website at https://www.kings.edu.au/discovering/campus-development/, I have a few questions which I hope you could please share some more insights for.</p> <ol style="list-style-type: none"> 1. Is there any plans to build a indoor swimming pool start building in this proposal? 2. Is there any plans to improve the soccer fields for senior schools in this proposal? 3. what is the anticipated start date for this project ? 4. <p>Many thanks for your time and effort in responding to the above questions.</p> <p>Kind regards, Stakeholder 2</p>	Query	7/09/2022	G/A	<p>EW acknowledged email and BCC'd GJA</p> <p>"Thank you for your email. I will ensure that your enquiries are shared with the relevant staff"</p>	Parent - Senior School	Neutral	Improve inbox
9/09/2022	3	147 days	<p>I am interested in viewing the preliminary plans.</p> <p>I have kids in both Kings and Tara and am particularly interested in the proposed new entrance from Mason drive.</p> <p>Stakeholder 3</p>	Query	12/09/2022	G/A	<p>EW acknowledged email and BCC'd GJA</p> <p>"Thank you for your email.</p> <p>I will ensure that your enquiry is shared with the relevant staff, who will be in touch with you shortly."</p>	Parent - Senior School	Neutral	Improve inbox

12/09/2022	4	144 days	With the State Significant Development of Kings school and all the traffic rearrangements, could you consider an internal public path on your side of the heritage fence. This will allow students and the public safe walking between bus stops on the north side of Pennant Hills Road. Perhaps Transport NSW may assist with the cost as it is now of State Significance.. See attach diagram for idea submission. Regards Stakeholder 4	Request	13/09/2022	GJA	EW acknowledged email and BCC'd GJA "Thank you for your email. I will ensure that your feedback is shared with the relevant staff."		General Public	Neutral	Improve inbox
23/09/2022	5	133 days	Emailed Improve to express improvement re. shortage of stored water for green keepers to use during dry periods.	Suggestion	23/09/2022	GJA?	EW acknowledged the email and advised feedback would be shared with relevant staff.		General Public	Critical	Improve inbox
23/09/2022	6	133 days	Emailed Improve to provide suggestion of creating a car park to cater for the lack of parking on sports days.	Suggestion	23/09/2022	GJA?	EW acknowledged the email and advised feedback would be shared with relevant staff.		General Public	Critical	Improve inbox

18/11/2022	7	77 days	<p>As you think about your master plan I offer a small suggestion.</p> <p>To build community at King's, which ultimately enriches the boys' education, it would be wonderful to have a small parent hub facility where any parent who is onsite can go to use the toilets, make a cup of tea and even get some work or admin done.</p> <p>Many parents drive a long way to bring their boys to school or attend functions and there is often dead time involved. A place to feel welcome at the school could enhance the parent experience of King's.</p> <p>It may also provide a vehicle for the community chaplain to connect with parents.</p> <p>Kind Regards Stakeholder 7</p>	Suggestion	18/11/2022	GJA/HB	<p>EW acknowledged email and forwarded to GJA, HB & MP</p> <p>"Thank you very much for your email.</p> <p>I acknowledge receipt and will ensure that your feedback is shared with the relevant staff."</p>		Parent - Senior School	Supportive	Improve Inbox
21/11/2022	8	74 days	<p>Good morning project team,</p> <p>I'm a mother of 2 boys, one just graduated and another about to start year 11. Both my sons are passionate about football and as a family, both my husband and I have been actively involved in volunteering our time to the club.</p> <p>Reading the email from TG this morning and the proposed development, I was surprised there were no mention of the sporting precinct which have been promised for the past 4yrs. I would love to get an update on where that is at?</p> <p>Regards, Stakeholder 8</p>	Query	21/11/2022	GJA/HB	<p>EW acknowledged email and BCC'd GJA, HB & MP</p> <p>"Thank you for your email.</p> <p>I will ensure that your enquiry is shared with the relevant staff, who will be in touch with you shortly."</p>		Parent - Senior School	Neutral	Improve inbox

23/11/2022	9	72 days	<p>Thank you for the invitation. I would very much like to suggest the installation of EV charging ports within the school.</p> <p>Stakeholder 9</p>	Suggestion	23/11/2022	GJA/HB	<p>EW acknowledged email and BCC'd GJA, HB & MP</p> <p>"Dear Stakeholder 9,</p> <p>I am reaching out to thank you for registering for the online feedback session on the proposed redevelopment of The King's School, North Parramatta Campus.</p> <p>We will be in touch shortly with more details on the session."</p>	Parent - Senior School	Supportive	Improve inbox
------------	---	---------	------------------------------------------------------------------------------------------------------------------------------------------------------	------------	------------	--------	------------------------------------------------------------------------------------------------------------------------------------------------------------------------------------------------------------------------------------------------------------------------------------------------------------------------------	------------------------	------------	---------------

Online Session

Date Received	Correspondent	TKS Community/General Public
18/11/2022	Attendee 1	Parent - Senior School
20/11/2022	Attendee 2	Parent - Prep School
21/11/2022	Attendee 3	Parent - Prep School
21/11/2022	Attendee 4	Parent - Senior School
22/11/2022	Attendee 5	Parent - Senior School
23/11/2022	Attendee 6	Parent - Senior School
23/11/2022	Attendee 7	Past Student (1986py)
23/11/2022	Attendee 8	Director of Cricket and 1st XI Coach

Appendix C. Letters

Section 1. Letter to community



6 September 2022

Dear Residents of North Parramatta

I am writing to you on behalf of The King's School, to notify you about the submission of a request for Secretary's Environmental Assessment Requirements (SEARs) related to a proposed upgrade of The King's School North Parramatta Campus.

The King's School has been a member of the Greater Parramatta community for almost 200 years and has always taken its responsibilities to all communities within and surrounding the School very seriously. That includes the School's duties as a custodian of its historic property and as a neighbour to surrounding residents, schools, churches, and businesses.

The King's School has a proud tradition of providing state-of-the-art teaching and extra-curricular facilities and is excited about the opportunities a range of new facilities will provide for current and future students, as well as ensuring King's continues to attract and retain the best staff. The School's Executive and Council have given careful consideration to the most appropriate way to deliver those improvements and believe completing these projects as part of a consolidated masterplan will deliver the greatest benefit to the School and those we share our broader community with.

We have listened to feedback from the community and amended the proposal in several areas, including traffic management arrangements. Plans have also been amended to reduce impact on riparian zones on the School campus.

The State Significant Development pathway also delivers greater consultation and a more transparent and rigorous environmental impact assessment than individual approvals for each component of the project.


Delivering the broad scope of work as part of a consolidated State Significant Development Application will also allow you, the members of the local community, to easily review and provide feedback on all major school development initiatives in one place.

The project is currently at the concept design stage, and we look forward to discussing our plans with all members of the community at the appropriate times. Consultation will be ongoing throughout the design process and will help to guide detailed design.

Soon we will invite you to an information session dedicated to the community, where you can learn more about the project.

Frequently asked questions can be accessed from the School's website at <https://www.kings.edu.au/campus-development/>. Further information will be brought to your letterbox. In the meantime, you are welcome to write to us at improve@kings.edu.au.

Yours sincerely



Mr Tony George
Headmaster



The King's School



www.kings.edu.au | P: +612 9683 8555 | E: tk@kings.edu.au | A: PO Box 1 Parramatta 2124, NSW Australia
CrICOS No: 02326F | The Council of The King's School, ABN: 24 481 364 152 | Incorporated by The King's School Council Act 1893

Section 2. Letter to Parramatta Council



6 September 2022

Lord Mayor Cr Donna Davis
City of Parramatta
PO Box 32
PARRAMATTA NSW 2124
lordmayor@cityofparramatta.nsw.gov.au

RE: Submission of a Request for Secretary's Environmental Assessment Requirements (SEARs) by The King's School

Dear Mayor and Members of the City of Parramatta Council

I am writing to you on behalf of The King's School to notify the City of Parramatta Council about the submission of a request for Secretary's Environmental Assessment Requirements (SEARs) related to a proposed redevelopment of The King's School North Parramatta Campus.

The King's School has been a member of the Greater Parramatta community for almost 200 years and has taken its responsibilities to all communities within and surrounding the School very seriously. That includes the School's duties as a custodian of its historic property and as a neighbour to surrounding residents, schools, churches, and businesses.

We would be pleased to provide further briefings for councillors and council officers. If interested in such briefing, please contact the project team via improve@kings.edu.au, and we will make the necessary arrangements.

The King's School has a proud tradition of providing state-of-the-art teaching and extra-curricular facilities and is excited about the opportunities a range of new facilities will provide for current and future students, as well as ensuring King's continues to attract and retain the best staff. The School's Executive and Council have given careful consideration to the most appropriate way to deliver those improvements and believe completing these projects as part of a consolidated masterplan will deliver the greatest benefit to the School and those we share our broader community with.

We have listened to feedback from the community and amended the proposal in several areas, including traffic management arrangements with respect to Pennant Hills Road at Gollan Avenue. Plans have also been amended to reduce impact on riparian zones on the School campus.

The State Significant Development pathway also delivers greater consultation and a more transparent and rigorous environmental impact assessment than individual approvals for each component of the project.



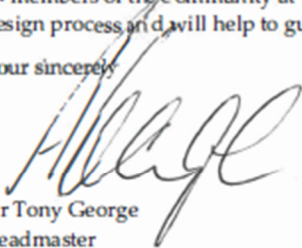
The King's School

www.kings.edu.au | P: +612 9683 8555 | E: tko@kings.edu.au | A: PO Box 1 Parramatta 2124, NSW Australia
Crises No: 02326F | The Council of The King's School, ABN: 24 481 364 152 | Incorporated by The King's School Council Act 1893

Delivering the broad scope of work as part of a consolidated State Significant Development Application will also allow local community members to easily review and provide feedback on all major school development initiatives in one place.

The project is currently at the concept design stage, and we look forward to discussing our plans with all members of the community at the appropriate times. Consultation will be ongoing throughout the design process and will help to guide detailed design.

Your sincerely



Mr Tony George
Headmaster

Section 3. Letter notification of Community Information session



14 November 2022

Dear Residents of North Parramatta

I am writing to you on behalf of The King's School to notify you of a planned community feedback session to be held at the School soon in relation to the proposed redevelopment of the School's North Parramatta Campus.

The community information session will take place at The King's School on **Thursday 24 November from 6.00pm to 8.00pm in Horrocks Hall, located at the Preparatory School.**

The proposed development, which forms part of a consolidated masterplan, will provide a range of new facilities, as well as significant upgrades to some existing sites to meet our evolving needs and ensure we can continue to provide a world-class education for our students.

We have listened to feedback from the community and amended the proposal in several areas, including traffic management arrangements. Plans have also been amended to reduce impact on riparian zones on the school campus.

We encourage you to come along to our feedback session and hear more about the plans firsthand. The session does not feature any formal presentation, so you can drop in at any time during the session to chat to our project team. For those unable to attend, you can register for an online feedback session by emailing improve@kings.edu.au.

All feedback provided at this stage of the process will be collated and included in our consultation outcomes report, which will be used in the preparation of the Environmental Impact Statement (EIS). Community members will then be provided with another opportunity to provide feedback when the EIS is put on public exhibition next year.

The King's School has been a member of the Greater Parramatta community for almost 200 years and has always taken its responsibilities to all communities within and surrounding the School very seriously. We will continue to work with all stakeholders to ensure we can deliver the best outcomes for students, staff and our broader community.

Please direct questions or other enquiries about the proposed development to improve@kings.edu.au.

Yours sincerely

Mr Tony George
Headmaster



The King's School

www.kings.edu.au | P: +612 9683 8555 | E: uks@kings.edu.au | A: PO Box 1 Parramatta 2124, NSW Australia
CrICOS No: 02326F | The Council of The King's School, ABN: 24 481 364 152 | Incorporated by The King's School Council Act 1893

Appendix D. Community session info boards



Our Campus Development

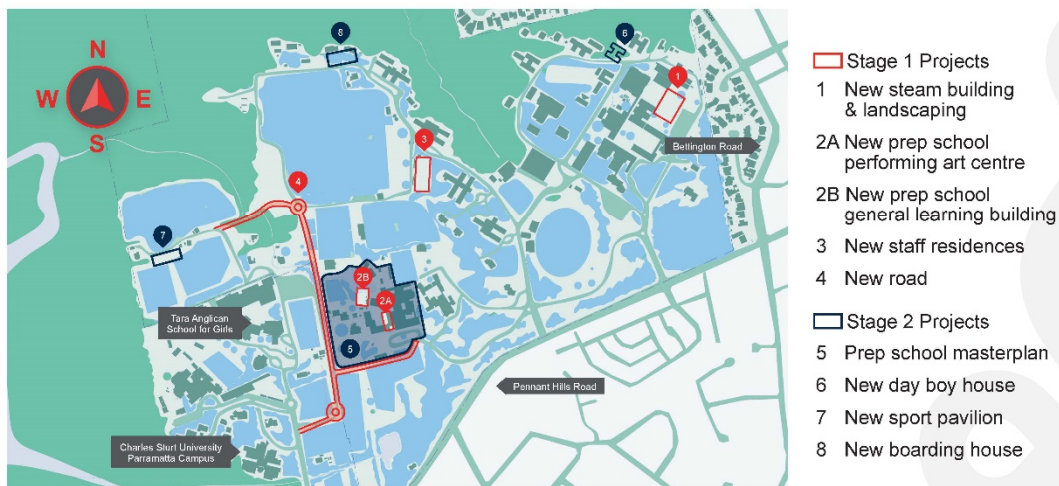
The King's School is planning to deliver a major campus development to meet our evolving needs and ensure we can continue to provide a world-class education for our students.

The proposed development will deliver a range of new facilities, as well as significant upgrades to some existing sites to support the current and future student and staff population.

All planned improvements will be delivered as part of a consolidated State Significant Development Application which will allow all stakeholders, including the local community, to easily review and provide feedback at multiple stages of the project.

The State Significant Development Application (SSDA) pathway also delivers greater consultation and a more transparent and rigorous environmental impact assessment than individual approvals for each component of the project.

The SSDA process differs from the normal DA process, including the increased level of consultation required.



The King's School Campus SSDA





Consultation Opportunities

Community members and stakeholder groups will have regular opportunities to provide feedback about the project to ensure any issues raised can be properly considered and addressed well ahead of work beginning.

The current proactive engagement of the community and stakeholders by The King's School relates to the lodgement of our Request for Secretary's Environmental Assessment Requirements (SEARs) by the Department of Planning and Environment.

All feedback provided at this stage of the process will be collated and included in our consultation outcomes report, which will be used in the preparation of the Environmental Impact Statement (EIS).

All stakeholders will then be provided with another opportunity to provide feedback when the EIS is put on public exhibition next year.

Project Timeline

2020 - 2021: Initial planning and development

2021: Initial stakeholder engagement on concept designs

August 2022: SEARs request lodged with NSW government

We are
here

November 2022: First stage of formal Community and Stakeholder Engagement

December 2022: Project reports submitted to meet SEARs, including consultation outcomes report

2023: Public Display of Environmental Impact Statement

To receive regular project updates, please provide your email address at the registration desk.

Further project timelines dependent on EIS approvals.

The King's School Campus SSDA





Our Responsibility

The King's School has been a member of the Greater Parramatta community for almost 200 years and has always taken its responsibilities to all communities within and surrounding the school very seriously.

That includes the school's duties as a custodian of its historic property and as a neighbour to surrounding residents, schools, churches and businesses

Our campus development project will be delivered via a State Significant Development Application pathway as it provides a robust framework which will ensure heritage, environment and other considerations are properly addressed as part of an independent assessment process.

Further information on how we plan to satisfy these important considerations will be available as part of the Environmental Impact Statement, which will be on public exhibition next year.

We will continue to work closely with key stakeholders, including the Department of Planning and Environment, Government Architect of NSW and the State Design Review Panel, Local Aboriginal Land Council, City of Parramatta Council, Transport for NSW, staff, parents and students and the local community as the project progresses.



The King's School Campus SSDA





An artist impression of the brand new, state-of-the-art building for the Senior School's science, technology, engineering, arts and maths precinct. Indicative only and subject to change.

Science, Technology, Engineering, Arts and Maths (STEAM) building

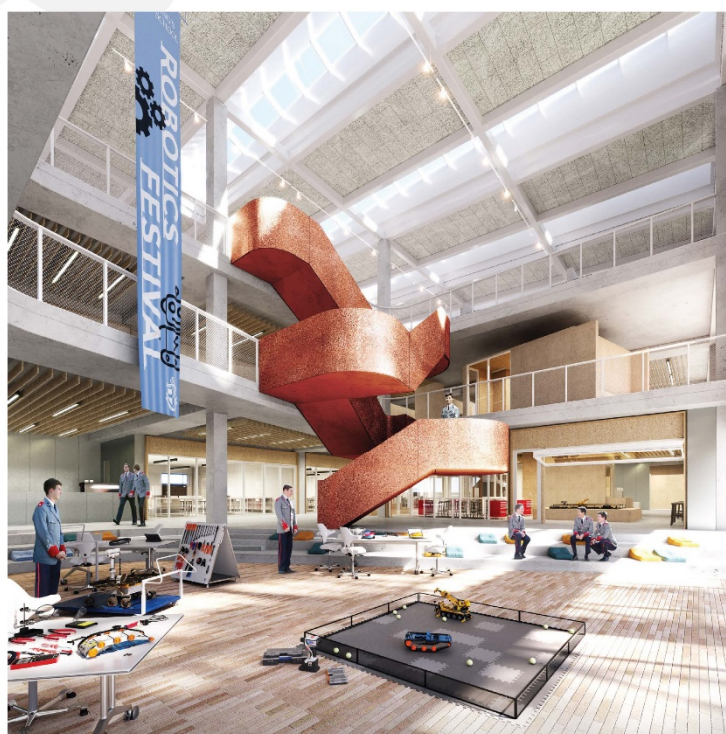
We pride ourselves in providing our staff and students with world-class education facilities.

As part of the The King's School campus development project, we are proposing a brand new, state-of-the-art building for the Senior School's science, technology, engineering, arts and maths precinct.

The new building will be located within the Senior School next to the existing Science Centre. This will ultimately complete a vibrant learning hub for STEAM students which already houses the Science Centre, Industrial Technology area and the Centre for Learning and Leadership.

The amalgamation of the Visual Arts, Hospitality and Food Technology and Computer Science and Technology departments into a new STEAM building provides students with the best possible learning experience where collaborative environments can be used between disciplines in a highly engaging and fit-for-purpose space.

We will continue to seek further input from key stakeholders throughout the project lifecycle to ensure the best outcomes are delivered for our students and staff.



This artist impression is indicative only and subject to change

The King's School Campus SSDA





New entrance/exit via Masons Drive

The school currently has two main vehicular entries from Pennant Hills Road to the centre and east of the campus.

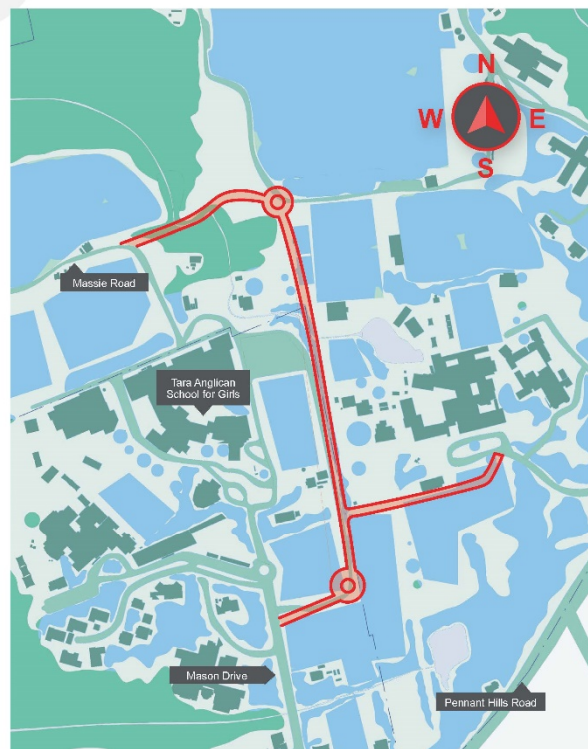
A key priority is to provide better access to the senior and junior schools, improve internal circulation across the campus and maintain high levels of safety.

We are discussing with Tara Anglican School for Girls, the possibility of a new shared vehicular entrance from the west via Masons Drive, to provide more direct and easier access for those needing to get to and from the Preparatory School and sporting fields. Other complimentary internal road work will also need to occur as part of the project.

The current proposal involves no loss in overall parking across the campus and improved drop-off and pick-up arrangements within the Preparatory School.

Consultation with key stakeholders, including Tara Anglican School for Girls, has already occurred to develop the initial plan and will be ongoing throughout detailed development and design.

Further feedback will be sought from key stakeholders, including the community, when the Environmental Impact Statement is on public exhibition next year. This will include information on the proposed operational changes to the school and access arrangements during construction.



The proposed new road is indicative only and subject to change following further consultation with stakeholders

The King's School Campus SSDA





Upgrades to the Preparatory School

We are proposing key upgrades to the Preparatory School to increase capacity and accommodate projected growth in staff and student numbers in the future.

Staff and students will benefit from a new Performing Arts and Music Academy, which will include a dedicated performance space and new and improved practice rooms which will replace the existing music facilities.

The proposed upgrades will also deliver additional classrooms and improvements to the existing staff room to boost capacity.

We will continue to seek further input from key stakeholders throughout the project to ensure the best outcomes are delivered for our students and staff.



The King's School Campus SSDA





Improved Staff and Boarding House Accommodation

As part of our commitment to provide state-of-the-art facilities, we are proposing to deliver significant improvements for staff and students who live on campus.

The work will include nine new townhouse residences for staff and their families within the Senior Boarding Precinct as well as additional staff accommodation in the residential precinct.

Various on-site residences across the Campus that are no longer fit-for-purpose will be demolished as part of the scope of work. This will likely occur as the new accommodation is delivered to minimise the impact on staff.

There are also plans for the future to build a new boarding house for up to 85 boarders which will allow our junior boarders to be relocated from the existing Gowan Brae house.

We will continue to seek further input from key stakeholders throughout the project to ensure the best outcomes are delivered for our students and staff.



*The current tennis courts site is being proposed as the location for the new staff accommodation.
The King's School is currently investigating new sites for the relocation of the tennis courts.*

The King's School Campus SSDA





New Day Boy House and Sports Pavilion

Day boy students in Year 7, who currently do not have a designated house, will benefit from a brand new space to improve their learning experience.

Our plans also include a boost to the school's sporting infrastructure, with a new Sports Pavilion to be built adjacent to the western sports field precinct. The new pavilion will increase capacity and provide students with a more modern facility to enjoy.

We will continue to seek further input from key stakeholders throughout the project to ensure the best outcomes are delivered for our students and staff.



The King's School Campus SSDA



Best for Project

AUSTRALIA

SYDNEY | ADELAIDE | BRISBANE | CANBERRA | DARWIN
MELBOURNE | NEWCASTLE | PERTH

NEW ZEALAND

AUCKLAND | CHRISTCHURCH | TAURANGA | WELLINGTON

MALAYSIA

KUALA LUMPUR

hello@tsamgt.com | tsamgt.com

