

---

# Appendix T

---

## Site Survey

---

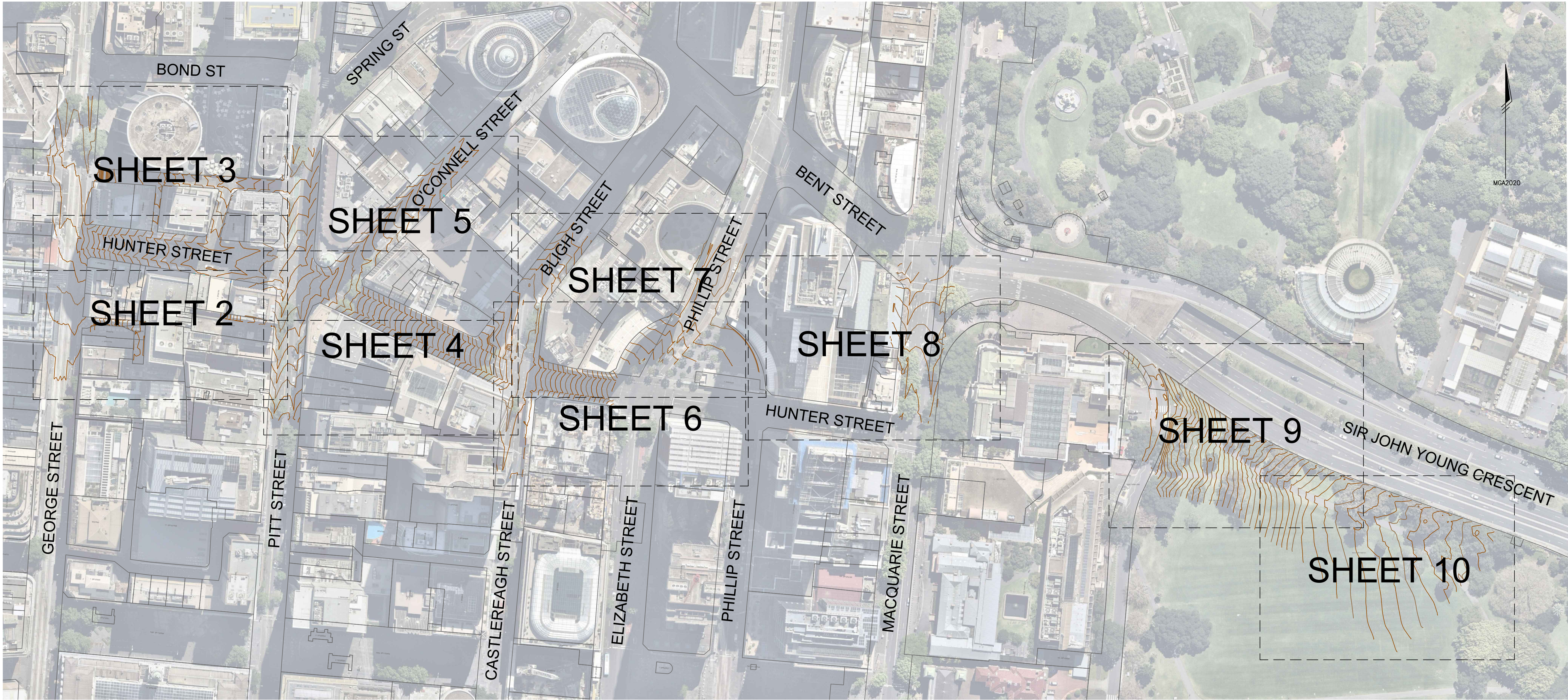


EXPLANATORY NOTES:

1. THIS MODEL SHOULD BE VIEWED IN A CAD ENVIRONMENT TO INTERPRET THE 3D INFORMATION.
2. ANY ELECTRONIC FILE IS PROVIDED WITHOUT WARRANTY AND SHOULD BE USED ONLY IN CONJUNCTION WITH THE SUPPLIED PDF/IMAGE COPY OF THIS PLAN.
3. THESE NOTES ARE AN INTEGRAL PART OF THE DIGITAL DATA FILE AND SHOULD BE READ WITH THE DATA FILE AND MUST NOT BE REMOVED FROM THE DATA FILE.
4. NO INVESTIGATION OF UNDERGROUND SERVICES HAS BEEN MADE.
5. IT REMAINS THE RESPONSIBILITY OF THOSE CONDUCTING PHYSICAL WORKS TO ENSURE AN UP-TO-DATE VERSION OF DIAL BEFORE YOU DIG PLANS IS CONSULTED AND AVAILABLE ON SITE.
6. ALL UTILITIES SHOULD TO BE POTHOLED TO VERIFY LOCATION AND DEPTH.
7. THIS SURVEY PLAN REPRESENTS THE LOCATION OF FEATURES THAT WERE ACCESSIBLE AT THE TIME OF SURVEY.
8. COPYRIGHT : © RPS GROUP PTY LTD INFORMATION CONTAINED IN THIS DRAWING / FILE IS THE COPYRIGHT OF RPS GROUP PTY LTD. COPYING OR USING THIS DATA IN WHOLE OR PART, IN ANY FORMAT, WITHOUT PERMISSION INFRINGES COPYRIGHT.
9. FOR REASONS OF PLAN PRESENTATION, NOT ALL OF THE INFORMATION CAN BE SHOWN ON THIS PLAN. PLEASE REFER TO ACCOMPANYING DIGITAL DATA FOR ALL SURVEY INFORMATION, ATTRIBUTES AND REDUCED LEVELS.

10. THIS SURVEY IS ON MGA2020 PRELIMINARY PROJECT COORDINATES AS ESTABLISHED FOR THE INVESTIGATION CORRIDOR WITH GRID DISTANCES. REDUCED LEVELS ARE BASED ON AUSTRALIAN HEIGHT DATUM (AHD71) AS ESTABLISHED BY PROJECT CONTROL.
- RPS HAS UNDERTAKEN A RIGOROUS LEAST SQUARES RE-ADJUSTMENT OF THE PRIMARY CONTROL SURVEY NETWORK (UTILISING ADJUSTED FIELD DATA) WHICH CONNECTS TO THE NSW GOVERNMENT PUBLISHED MGA2020 SCIMS VALUES FOR MARKS THAT FORM PART OF THE GREATER SYDNEY SUBSPINE NETWORK. RPS HAVE THEN INVESTIGATED THE VARIOUS MATHEMATICAL MODELS AVAILABLE FOR THE TRANSFORMATION OF DATA FROM MGA94 TO MGA2020 AND HAVE FOUND THAT:
- A) THE METHOD WHICH ALIGNS MOST CLOSELY WITH THE RE-ADJUSTED PRIMARY SURVEY CONTROL, IS A BLOCK SHIFT OF +0.461 EAST AND 1.445 NORTH (WITHIN 11MM).
- B) OTHER METHODS OF TRANSFORMATION (SEVEN-PARAMETERS, CONFORMAL GRID, AND CONFORMAL + DISTORTION GRID) RESULT IN DIFFERENCES OF UP TO 44MM.
11. BOUNDARIES HAVE BEEN TAKEN FROM NSW DIGITAL CADASTRAL DATABASE (DCDB) AND HAVE NOT BEEN VERIFIED BY SURVEY, AND ARE FOR CONTEXT PURPOSES ONLY. NO INVESTIGATION OF LAND TITLES HAS BEEN CONDUCTED.
12. CONTOURS ARE AN INDICATION OF LANDFORM AND SHOULD NOT BE TAKEN IN PREFERENCE TO SPOT LEVELS SHOWN.
13. CONTOUR INTERVAL SHOWN IS 1.0 MAJOR AND 0.25 MINOR.
14. BUILDING FOOTPRINTS SHOWN ARE AT GROUND LEVEL. FOOTPRINTS MAY DIFFER AT OTHER LEVELS.

15. ADJOINING BUILDINGS HAVE BEEN SURVEYED WHERE VISIBLE FROM INSIDE THE SURVEY SITE. BUILDINGS WITHIN 1 METRE OF THE APPROXIMATE BOUNDARY AND ACCESSIBLE AT THE TIME OF SURVEY HAVE BEEN LOCATED. IF CRITICAL TO DESIGN, RPS RECOMMEND FURTHER SURVEY WORK TO LOCATE ADJOINING BUILDINGS.
16. ONLY SIGNIFICANT TREES ON THE SUBJECT SITE WITH A TRUNK DIAMETER OF 300mm OR GREATER HAVE BEEN SURVEYED. SMALLER TREES AND SHRUBS EXIST ON SITE. NO TREE TAGS HAVE BEEN PLACED. APPROXIMATE TRUNK, SPREAD AND HEIGHT OF TREES ARE SHOWN ADJACENT TO THE TREE LOCATION.
17. NO ABOVE GROUND SERVICES OR ASSETS, SUCH AS OVERHEAD WIRES OR AWNINGS HAVE BEEN LOCATED AS PART OF THIS SURVEY.
18. SURFACE UTILITY ASSETS HAVE NOT BEEN LOCATED WITHIN THE ROAD CARRIAGEWAY AREA AS PART OF THIS PLAN, WITH THE EXCEPTION OF DE MESTRE PLACE AND HOSPITAL ROAD.



- PUBLIC UTILITY LEGEND**
- E ELEC**
- CABLE JUNCTION BOX (PEJB)
  - CABLE MANHOLE (PEMH)
  - DISTRIBUTION FUSE POINT
  - POLE - LIGHT (PLPL)
  - SUSPENDED LIGHT (PLSU)
  - GARDEN LIGHT (PLGN)
  - POLE - POWER (PPPL)
  - POLE - POWER & LIGHT (PPLP)
  - POWER SERVICE PILLAR - UNDERGROUND (PEUP)
  - TRANSFORMER CABINET CENTRE (PETC)
  - LIGHT WITH OUTREACH (LI)
  - LINE-MAJOR OVERHEAD (UE) (DIA UNK)
- E TCS**
- TRAFFIC CONTROL SIGNAL (PSGL)
  - TRAFFIC SIGNAL CONTROLLER (PSC)
  - TRAFFIC SIGNAL DETECTOR (PSDR)
  - TRAFFIC SIGNAL JUNCTION BOX (PSJX)
  - TRAFFIC LIGHT WITH OUTREACH (TO)
- E COMMS (COMMUNICATIONS)**
- TELEPHONE DISTRIBUTION PILLAR (PTDP)
  - ABOVE GROUND JOINING POST (PTJP)
  - OPTICAL FIBRE JUNCTION BOX (POFJ)
  - OPTICAL FIBRE PIT (POFP)
  - STD 1.1 m BY 1.1 m MAIN PIT (PTMP)
  - TELEPHONE BOX POINT (PTBX)
  - TELEPHONE POLE (PTPL)
  - TELEPHONE SINGLE CONCRETE PIT (PTSP)
  - TELEPHONE TRIPLE CONCRETE PIT (PT3P)
  - TELEPHONE TWIN CONCRETE PIT (PTTP)
- E GAS**
- MANHOLE COVER (PGHL)
  - METER (PGMR)
  - PIPELINE MARKER (PGPM)
  - PIPELINE MARKER - HIGH PRESSURE (PGHM)
  - VALVE BOX (PGAS)
  - VENT PIPE (PGVP)
  - TEST POINT (PGTP)
- E WATR**
- AIR VALVE (PWAV)
  - EARTH TERMINAL (PWET)
  - FIRE HYDRANT (PWFB)
  - HYDRANT (PWHY)
  - METER (PWRM)
  - STOP VALVE (PWSV)
  - TAP (PWTP)
  - MAIN MARKER (PWMM)
- E SWER**
- MANHOLE COVER (PSMH)
  - VENT PIPE (PSVP)
  - LAMPPOLE (PSLH)
- E DRAIN (STORMWATER)**
- DRAINAGE JUNCTION MANHOLE (PDJM)
  - GULLY PIT POINT (PGUL)
  - INLET TO SUMP (PILT)
  - INVERT OF PIPE (PINV)
  - TOP OF CONCRETE JUNCTION BOX (PJBX)
  - SUBSOIL DRAIN FLUSH POINT (PSFP)
  - OVERB OF PIPE (POBV)
  - KERB INLET (KI)
  - DRAINAGE PIT (DP)
  - DISH DRAIN (DD)
  - NO PIPE VISIBLE
- E BUIL (BUILDING & STRUCTURES)**
- AWNING POINT (PTDP)
  - FLOOR LEVEL (PFLR)
  - BUILDING COLUMN
- E BRDGE (BRIDGE STRUCTURES)**
- CYCLE LINE MARKINGS
- E RAIL**
- RAILWAY SIGNAL (PRSG)
  - RAIL OVERHEAD WIRES (CONT) (DIA UNK)
  - RAIL OVERHEAD WIRES (CATY) (DIA UNK)
- E CULT (CULTURAL)**
- SIGN POST (PSIN)
  - LARGE SIGN (SI)
  - BOLLARD (AC)
  - RUBBISH BIN (PBIN)
  - METAL FENCE
  - MANPROOF FENCE
  - FENCE (OTHER)
- E MISC**
- GATIC COVER LID (PGAT)
  - UNIDENTIFIED SERVICE (PUSR)
  - UNIDENTIFIED SERVICE (PUSR)
  - BORE HOLE (PBHX)
- E TOPO**
- SPOT HEIGHT (PSHT)
  - NATURAL SURFACE
  - TREE
  - TRUNK/SPREAD/HEIGHT
  - TOP OF BANK
  - BOTTOM OF BANK
- SQUARE BRACKETS INDICATE THAT THE FEATURE SURVEYED IS NOT AT THE GROUND SURFACE

REVISIONS				NOTES			
No.	DATE	REVISION DETAILS	DRAWN	CHK	APP		
B	10.01.2022	BUILDING PARAPETS ADDED	LB	TP	SFG		
A	14.10.2021	INITIAL ISSUE	LB	GS	SFG		
REVISION DETAILS				DRAWN	CHK	APP	

HORIZ. SCALE:	VERT. SCALE:
1:1250 @ A1	@ A1
COORDINATES: MGA2020 PRELIMINARY PROJECT CONTROL	DATUM: AHD PRELIMINARY PROJECT CONTROL
ORIGIN: 25 12.5 0 25 50 75	ORIGIN: 25 12.5 0 25 50 75

EXPLANATORY NOTES & LEGEND ON SHEET 1 ARE APPLICABLE TO ALL SHEETS ON THIS PLAN

CLIENT: NSW GOVERNMENT	DATE OF SURVEY: AUG 2021
SURVEY: RPS	DATE OF PLAN: 14.10.2021
DRAWN: LMB	DATE LAST SAVED: 10.01.2022
CHECKED: GS	DATE APPROVED: 14.10.2021
APPROVED: SFG	

TITLE: SMW DETAILED SITE SURVEY - HUNTER STREET STATION	JOB No: PR142446-239	ISSUE: B20
DRAWING No: SMWSDS-RPS-HST-SR-DWG-000557-B(G2020).dwg	www.dialbeforeyoudig.com.au	SIZE: A1
	DIAL 1100 BEFORE YOU DIG	MAKING COMPLEX EASY
	SHEET 1 OF 10 SHEETS	

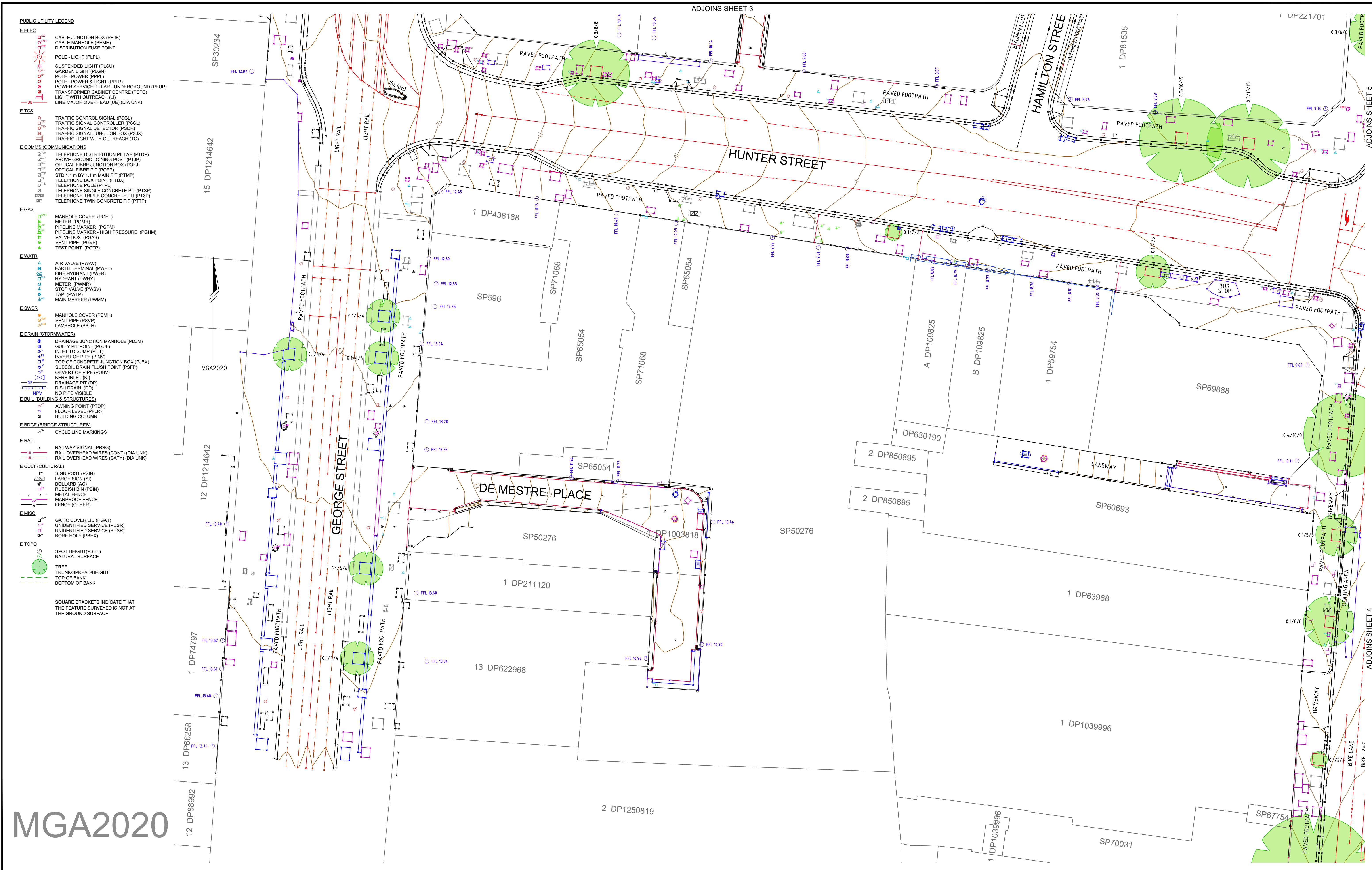
COPYRIGHT: © RPS GROUP PTY LTD. INFORMATION CONTAINED IN THIS DRAWING / FILE IS THE COPYRIGHT OF RPS GROUP PTY LTD. COPYING OR USING THIS DATA IN WHOLE OR PART, IN ANY FORMAT, WITHOUT PERMISSION INFRINGES COPYRIGHT. © THIS DOCUMENT IN BOTH ELECTRONIC AND HARD-COPY FORMAT IS AND SHALL REMAIN THE PROPERTY OF RPS GROUP PTY LTD. THE INFORMATION MAY ONLY BE USED FOR THE PURPOSES FOR WHICH IT WAS COMMISSIONED AND IN ACCORDANCE WITH THE TERMS OF ENGAGEMENT FOR THE COMMISSION. UNAUTHORISED USE OF THIS INFORMATION IN ANY FORM WHATSOEVER IS PROHIBITED.

RPS AUSTRALIA EAST PTY LTD  
LEVEL 13 255 PITT STREET SYDNEY NSW 2000  
T: 02 8270 8300 F: 02 9248 9810 www.rpsgroup.com.au

THIS IS A COLOURED PLAN.  
REPRODUCTION IN COLOUR ONLY.



C:\LMB\1-RPSCBD\SMWSDS-RPS-HST-SR-DWG-000557-B(G2020).dwg 10.01.2022 4:50 PM






REVISIONS							■ HORIZ. SCALE: 1:200 @ A1 ■ VERT. SCALE: @ A1 ■ COORDINATES: MCA2020 PRELIMINARY PROJECT CONTROL ■ DATUM: AHD PRELIMINARY PROJECT CONTROL ■ ORIGIN:
	B	10.01.2022	BUILDING PARAPETS ADDED	LB	TP	SFG	
	A	14.10.2021	INITIAL ISSUE	LB	GS	SFG	
	No.	DATE	REVISION DETAILS	DRAWN	CHK	APP	

EXPLANATORY NOTES & LEGEND ON SHEET 1 ARE APPLICABLE TO ALL SHEETS ON THIS PLAN

<b>CLIENT:</b>  	
<b>SURVEY:</b> RPS	<b>DATE OF SURVEY:</b> AUG 2021
<b>DRAWN:</b> LMB	<b>DATE OF PLAN:</b> 14.10.2021
<b>CHECKED:</b> GS	<b>DATE LAST SAVED:</b> 10.01.2022
<b>APPROVED:</b> SFG	<b>DATE APPROVED:</b> 14.10.2021

■ TITLE <h1 style="text-align: center;">SMW DETAILED SITE SURVEY - HUNTER STREET STATION</h1>		■ JOB No <b>PR142446-239</b> <a href="http://www.dialbeforeyoudig.com">www.dialbeforeyoudig.com</a> 		■ ISSUE <b>B20</b>	
■ DRAWING No <b>SMWSDDS-RPS-HST-SR-DWG-000557-B(G2020).dwg</b>		■ SHEET <b>2</b> OF 10 SHEETS		■ SIZE <b>A1</b>	





MGA2020

REVISIONS							
No.	DATE	REVISION DETAILS	DRAWN	CHK	APP		
B	10.01.2022	BUILDING PARAPETS ADDED	LB	TP	SFG		
A	14.10.2021	INITIAL ISSUE	LB	GS	SFG		

HORIZ. SCALE: 1:200 @ A1		VERT. SCALE: @ A1	
COORDINATES: MGA2020		DATUM: AHD	
PRELIMINARY PROJECT CONTROL		PRELIMINARY PROJECT CONTROL	
ORIGIN: PROJECT CONTROL		ORIGIN: PROJECT CONTROL	

NOTES	
EXPLANATORY NOTES & LEGEND ON SHEET 1 ARE APPLICABLE TO ALL SHEETS ON THIS PLAN	

EXPLANATORY NOTES & LEGEND ON SHEET 1 ARE APPLICABLE TO ALL SHEETS ON THIS PLAN

CLIENT: NSW GOVERNMENT		sydney METRO	
SURVEY: RPS		DATE OF SURVEY: AUG 2021	
DRAWN: LMB		DATE OF PLAN: 14.10.2021	
CHECKED: GS		DATE LAST SAVED: 10.01.2022	
APPROVED: SFG		DATE APPROVED: 14.10.2021	

TITLE: SMW DETAILED SITE SURVEY - HUNTER STREET STATION		JOB No: PR142446-239		ISSUE: B20	
DRAWING No: SMWSDS-RPS-HST-SR-DWG-000557-B(G2020).dwg		SHEET 3 OF 10 SHEETS		SIZE: A1	







- PUBLIC UTILITY LEGEND**
- E ELEC**
- CABLE JUNCTION BOX (PEJB)
  - CABLE MANHOLE (PEMH)
  - DISTRIBUTION FUSE POINT
  - POLE - LIGHT (PLPL)
  - SUSPENDED LIGHT (PLSU)
  - GARDEN LIGHT (PLGN)
  - POLE - POWER (PPPL)
  - POLE - POWER & LIGHT (PPLP)
  - POWER SERVICE PILLAR - UNDERGROUND (PEUP)
  - TRANSFORMER CABINET CENTRE (PETC)
  - LIGHT WITH OUTREACH (LI)
  - LINE-MAJOR OVERHEAD (UE) (DIA UNK)
- E TCS**
- TRAFFIC CONTROL SIGNAL (PSGL)
  - TRAFFIC SIGNAL CONTROLLER (PSCL)
  - TRAFFIC SIGNAL DETECTOR (PSDR)
  - TRAFFIC SIGNAL JUNCTION BOX (PSJX)
  - TRAFFIC LIGHT WITH OUTREACH (TO)
- E COMMS COMMUNICATIONS**
- TELEPHONE DISTRIBUTION PILLAR (PTDP)
  - ABOVE GROUND JOINING POST (PTJP)
  - OPTICAL FIBRE JUNCTION BOX (POFJ)
  - OPTICAL FIBRE PIT (POFP)
  - STD 1.1 m BY 1.1 m MAIN PIT (PTMP)
  - TELEPHONE BOX POINT (PTBX)
  - TELEPHONE POLE (PTPL)
  - TELEPHONE SINGLE CONCRETE PIT (PTSP)
  - TELEPHONE TRIPLE CONCRETE PIT (PT3P)
  - TELEPHONE TWIN CONCRETE PIT (PTTP)
- E GAS**
- MANHOLE COVER (PGHL)
  - METER (PGMR)
  - PIPELINE MARKER (PGPM)
  - PIPELINE MARKER - HIGH PRESSURE (PGHM)
  - VALVE BOX (PGAS)
  - VENT PIPE (PGVP)
  - TEST POINT (PGTP)
- E WATER**
- AIR VALVE (PWAU)
  - EARTH TERMINAL (PWET)
  - FIRE HYDRANT (PWFB)
  - HYDRANT (PWHY)
  - METER (PWRM)
  - STOP VALVE (PWSV)
  - TAP (PWTTP)
  - MAIN MARKER (PWMM)
- E SWER**
- MANHOLE COVER (PSMH)
  - VENT PIPE (PSVP)
  - LAMPHOLE (PSLH)
- E DRAIN (STORMWATER)**
- DRAINAGE JUNCTION MANHOLE (PDJM)
  - GULLY PIT POINT (PGUL)
  - INLET TO SUMP (PILT)
  - INVERT OF PIPE (PINV)
  - TOP OF CONCRETE JUNCTION BOX (PJXB)
  - SUBSOIL DRAIN FLUSH POINT (PSFP)
  - OBVERT OF PIPE (POBV)
  - KERB INLET (KI)
  - DRAINAGE PIT (DP)
  - DISH DRAIN (DD)
  - NO PIPE VISIBLE
- E BUILD (BUILDING & STRUCTURES)**
- AWNING POINT (PTDP)
  - FLOOR LEVEL (PFLR)
  - BUILDING COLUMN
- E BDGE (BRIDGE STRUCTURES)**
- CYCLE LINE MARKINGS
- E RAIL**
- RAILWAY SIGNAL (PRSG)
  - RAIL OVERHEAD WIRES (CONT) (DIA UNK)
  - RAIL OVERHEAD WIRES (CATY) (DIA UNK)
- E CULT (CULTURAL)**
- SIGN POST (PSIN)
  - LARGE SIGN (SI)
  - BOLLARD (AC)
  - RUBBISH BIN (PBIN)
  - METAL FENCE
  - MANROOF FENCE
  - FENCE (OTHER)
- E MISC**
- GATIC COVER LID (PGAT)
  - UNIDENTIFIED SERVICE (PUSR)
  - UNIDENTIFIED SERVICE (PUSR)
  - BORE HOLE (PBHX)
- E TOPO**
- SPOT HEIGHT (PSHT)
  - NATURAL SURFACE
  - TREE
  - TRUNK/SPREAD/HEIGHT
  - TOP OF BANK
  - BOTTOM OF BANK

SQUARE BRACKETS INDICATE THAT THE FEATURE SURVEYED IS NOT AT THE GROUND SURFACE

MGA2020

REV	DATE	DESCRIPTION	BY			CHK		
			LB	TP	SFG	LB	GS	SFG
B	10.01.2022	BUILDING PARAPETS ADDED	LB	TP	SFG			
A	14.10.2021	INITIAL ISSUE	LB	GS	SFG			
No.	DATE	REVISION DETAILS	DRAWN	CHK	APP			

HORIZ. SCALE:	VERT. SCALE:
1:200 @ A1	@ A1
COORDINATES: MGA2020	DATUM: AHD
ORIGIN: PRELIMINARY PROJECT CONTROL	ORIGIN: PRELIMINARY PROJECT CONTROL
4 2 0 4 8 12	
SCALE IN METRES AT ORIGINAL REDUCTION RATIO	

NOTES

EXPLANATORY NOTES & LEGEND ON SHEET 1 ARE APPLICABLE TO ALL SHEETS ON THIS PLAN

CLIENT:	NSW GOVERNMENT	DATE OF SURVEY:	AUG 2021
SURVEY:	RPS	DATE OF PLAN:	14.10.2021
DRAWN:	LMB	DATE LAST SAVED:	10.01.2022
CHECKED:	GS	DATE APPROVED:	14.10.2021
APPROVED:	SFG		

TITLE	SMW DETAILED SITE SURVEY - HUNTER STREET STATION	JOB No	PR142446-239	ISSUE	B20
DRAWING No	SMWSDDS-RPS-HST-SR-DWG-000557-B(G2020).dwg	www.dial100.com.au	DIAL100 BEFORE YOU DIG	SHEET	5 OF 10 SHEETS
SIZE	A1	MAKING COMPLEX EASY			

COPYRIGHT: © RPS GROUP PLC. INFORMATION CONTAINED IN THIS DRAWING / FILE IS THE COPYRIGHT OF RPS GROUP PLC. COPYING OR USING THIS DATA IN WHOLE OR PART, IN ANY FORMAT, WITHOUT PERMISSION INFRINGES COPYRIGHT. © THIS DOCUMENT IN BOTH ELECTRONIC AND HARD COPY FORMATS IS AND SHALL REMAIN THE PROPERTY OF RPS GROUP PLC. THE INFORMATION MAY ONLY BE USED FOR THE PURPOSE FOR WHICH IT WAS COMMISSIONED AND IN ACCORDANCE WITH THE TERMS OF ENGAGEMENT FOR THE COMMISSION. UNAUTHORISED USE OF THIS INFORMATION IN ANY FORM WHATSOEVER IS PROHIBITED.

RPS AUSTRALIA EAST PTY LTD (ABN 14 140 292 762)  
LEVEL 13 255 PITT STREET SYDNEY NSW 2000  
T: 02 8270 8300 F: 02 9248 9810 www.rpsgroup.com.au

THIS IS A COLOURED PLAN.  
REPRODUCTION IN COLOUR ONLY.

C:\LMB\1-RPSCBD\SMWSDDS-RPS-HST-SR-DWG-000557-B(G2020).dwg 10.01.2022 4:51 PM





MGA2020

REVISIONS				
No.	DATE	REVISION DETAILS	DRAWN	CHK
B	10.01.2022	BUILDING PARAPETS ADDED	LB	TP
A	14.10.2021	INITIAL ISSUE	LB	GS

1:200 @ A1	VERT. SCALE: @ A1
COORDINATES: MGA2020	DATUM: AHD
ORIGIN: PRELIMINARY PROJECT CONTROL	ORIGIN: PRELIMINARY PROJECT CONTROL
4 2 0 4 8 12	
SCALE IN METRES AT ORIGINAL REDUCTION RATIO	

NOTES

EXPLANATORY NOTES & LEGEND ON SHEET 1 ARE APPLICABLE TO ALL SHEETS ON THIS PLAN

CLIENT: NSW GOVERNMENT	SYDNEY METRO
SURVEY: RPS	DATE OF SURVEY: AUG 2021
DRAWN: LMB	DATE OF PLAN: 14.10.2021
CHECKED: GS	DATE LAST SAVED: 10.01.2022
APPROVED: SFG	DATE APPROVED: 14.10.2021

TITLE

SMW DETAILED SITE SURVEY - HUNTER STREET STATION

DRAWING No

SMWSDDS-RPS-HST-SR-DWG-000557-B(G2020).dwg

JOB No

PR142446-239

ISSUE

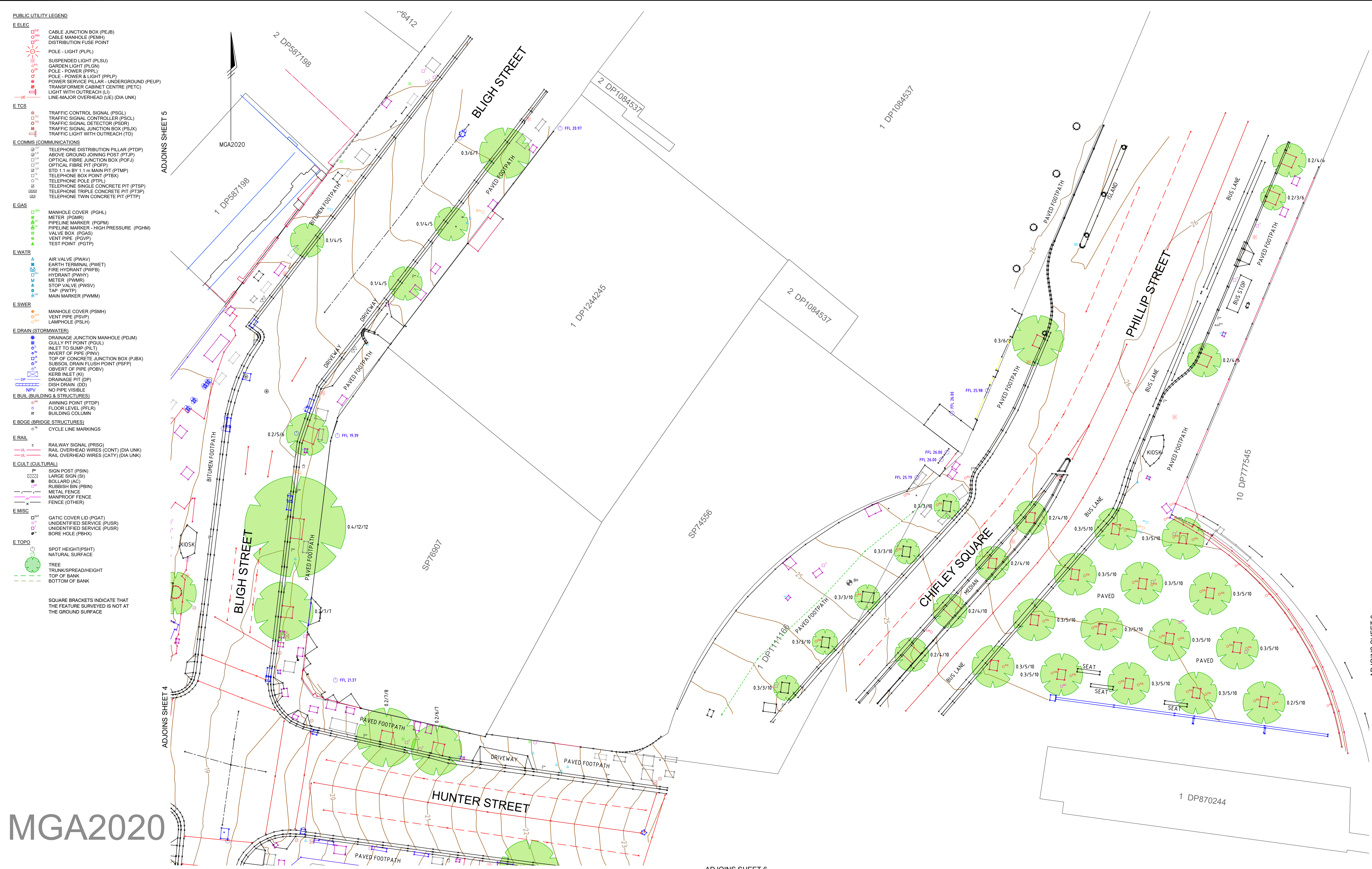
B20

SHEET 6 OF 10 SHEETS

SIZE

A1





REVISIONS				
No.	DATE	REVISION DETAILS	DRAWN	CHK
B	10.01.2022	BUILDING PARAPETS ADDED	LB	TP
A	14.10.2021	INITIAL ISSUE	LB	GS

HORIZ. SCALE: 1:200 @ A1	VERT. SCALE: @ A1
COORDINATES: MGA2020 PRELIMINARY PROJECT CONTROL	DATUM: AHD PRELIMINARY PROJECT CONTROL
ORIGIN: 4 2 0 4 8 12	ORIGIN: 4 2 0 4 8 12
SCALE IN METRES AT ORIGINAL REDUCTION RATIO	

NOTES

EXPLANATORY NOTES & LEGEND ON SHEET 1 ARE APPLICABLE TO ALL SHEETS ON THIS PLAN

CLIENT: NSW GOVERNMENT	sydney METRO
SURVEY: RPS	DATE OF SURVEY: AUG 2021
DRAWN: LMB	DATE OF PLAN: 14.10.2021
CHECKED: GS	DATE LAST SAVED: 10.01.2022
APPROVED: SFG	DATE APPROVED: 14.10.2021

TITLE  
SMW DETAILED SITE SURVEY - HUNTER STREET STATION

DRAWING No  
SMWSDDS-RPS-HST-SR-DWG-000557-B(G2020).dwg

JOB No  
PR142446-239

ISSUE  
B20

www.dial100.com.au  
DIAL100 BEFORE YOU DIG

SHEET 7 OF 10 SHEETS

SIZE  
A1





- PUBLIC UTILITY LEGEND**
- E ELEC**
- CABLE JUNCTION BOX (PEJB)
  - CABLE MANHOLE (PEMH)
  - DISTRIBUTION FUSE POINT
  - POLE - LIGHT (PLPL)
  - SUSPENDED LIGHT (PLSU)
  - GARDEN LIGHT (PLGN)
  - POLE - POWER (PPPL)
  - POLE - POWER & LIGHT (PPLP)
  - POWER SERVICE PILLAR - UNDERGROUND (PEUP)
  - TRANSFORMER CABINET CENTRE (PETC)
  - LIGHT WITH OUTREACH (LI)
  - LINE-MAJOR OVERHEAD (UE) (DIA UNK)
- E TCS**
- TRAFFIC CONTROL SIGNAL (TCSGL)
  - TRAFFIC SIGNAL CONTROLLER (TSCCL)
  - TRAFFIC SIGNAL DETECTOR (TSDR)
  - TRAFFIC SIGNAL JUNCTION BOX (TSJX)
  - TRAFFIC LIGHT WITH OUTREACH (TO)
- E COMMS (COMMUNICATIONS)**
- TELEPHONE DISTRIBUTION PILLAR (PTDP)
  - ABOVE GROUND JOINING POST (PTJP)
  - OPTICAL FIBRE JUNCTION BOX (POFJ)
  - OPTICAL FIBRE PIT (POFP)
  - STD 1.1 m BY 1.1 m MAIN PIT (PTMP)
  - TELEPHONE BOX POINT (PTBX)
  - TELEPHONE POLE (PTPL)
  - TELEPHONE SINGLE CONCRETE PIT (PTSP)
  - TELEPHONE TRIPLE CONCRETE PIT (PT3P)
  - TELEPHONE TWIN CONCRETE PIT (PTTP)
- E GAS**
- MANHOLE COVER (PGHL)
  - METER (PGMR)
  - PIPELINE MARKER (PGPM)
  - PIPELINE MARKER - HIGH PRESSURE (PGHM)
  - VALVE BOX (PGAS)
  - VENT PIPE (PGVP)
  - TEST POINT (PGTP)
- E WATR**
- AIR VALVE (PWAV)
  - EARTH TERMINAL (PWET)
  - FIRE HYDRANT (PWFH)
  - HYDRANT (PWHY)
  - METER (PWMR)
  - STOP VALVE (PWSV)
  - TAP (PWTP)
  - MAIN MARKER (PWMM)
- E SWER**
- MANHOLE COVER (PSMH)
  - VENT PIPE (PSPV)
  - LAMPHOLE (PSLH)
- E DRAIN (STORMWATER)**
- DRAINAGE JUNCTION MANHOLE (PDJM)
  - GULLY PIT POINT (PGUL)
  - INLET TO SUMP (PILT)
  - INVERT OF PIPE (PIWV)
  - TOP OF CONCRETE JUNCTION BOX (PJBX)
  - SUBSOIL DRAIN FLUSH POINT (PSFP)
  - OBVERT OF PIPE (POBV)
  - KERB INLET (KI)
  - DRAINAGE PIT (DP)
  - DISH DRAIN (DD)
  - NO PIPE VISIBLE
- E BUIL (BUILDING & STRUCTURES)**
- AWNING POINT (PTDP)
  - FLOOR LEVEL (PFLR)
  - BUILDING COLUMN
- E BDGE (BRIDGE STRUCTURES)**
- CYCLE LINE MARKINGS
- E RAIL**
- RAILWAY SIGNAL (PRSG)
  - RAIL OVERHEAD WIRES (CONT) (DIA UNK)
  - RAIL OVERHEAD WIRES (CATY) (DIA UNK)
- E CULT (CULTURAL)**
- SIGN POST (PSIN)
  - LARGE SIGN (SI)
  - BOLLARD (AC)
  - RUBBISH BIN (PBIN)
  - METAL FENCE
  - MANPROOF FENCE
  - FENCE (OTHER)
- E MISC**
- GATIC COVER LID (PGAT)
  - UNIDENTIFIED SERVICE (PUSR)
  - UNIDENTIFIED SERVICE (PUSR)
  - BORE HOLE (PBHX)
- E TOPO**
- SPOT HEIGHT (PSHT)
  - NATURAL SURFACE
  - TREE
  - TRUNK/SPREAD/HEIGHT
  - TOP OF BANK
  - BOTTOM OF BANK
- SQUARE BRACKETS INDICATE THAT THE FEATURE SURVEYED IS NOT AT THE GROUND SURFACE

MGA2020

REVISIONS			NOTES		
No.	DATE	REVISION DETAILS	DRAWN	CHK	APP
B	10.01.2022	BUILDING PARAPETS ADDED	LB	TP	SFG
A	14.10.2021	INITIAL ISSUE	LB	GS	SFG

COPIRIGHT: © RPS GROUP PLC. INFORMATION CONTAINED IN THIS DRAWING / FILE IS THE COPYRIGHT OF RPS GROUP PLC. COPYING OR USING THIS DATA IN WHOLE OR PART, IN ANY FORMAT, WITHOUT PERMISSION INFRINGES COPYRIGHT. © THIS DOCUMENT IN BOTH ELECTRONIC AND HARD-COPY FORMAT IS AND SHALL REMAIN THE PROPERTY OF RPS GROUP PLC. THE INFORMATION MAY ONLY BE USED FOR THE PURPOSE FOR WHICH IT WAS COMMISSIONED AND IN ACCORDANCE WITH THE TERMS OF ENGAGEMENT FOR THE COMMISSION. UNAUTHORISED USE OF THIS INFORMATION IN ANY FORM WHATSOEVER IS PROHIBITED.

EXPLANATORY NOTES & LEGEND ON SHEET 1 ARE APPLICABLE TO ALL SHEETS ON THIS PLAN

CLIENT: <b>NSW GOVERNMENT</b>	DATE OF SURVEY: AUG 2021
SURVEY: <b>RPS</b>	DATE OF PLAN: 14.10.2021
DRAWN: <b>LMB</b>	DATE LAST SAVED: 10.01.2022
CHECKED: <b>GS</b>	DATE APPROVED: 14.10.2021
APPROVED: <b>SFG</b>	

**TITLE**

**SMW DETAILED SITE SURVEY - HUNTER STREET STATION**

**CLIENT**

**sydney METRO**

**DRAWING No**

SMWSDDS-RPS-HST-SR-DWG-000557-B(G2020).dwg

**JOB No**

PR142446-239

**ISSUE**

B20

**www.dial100.com.au**

**DIAL100**

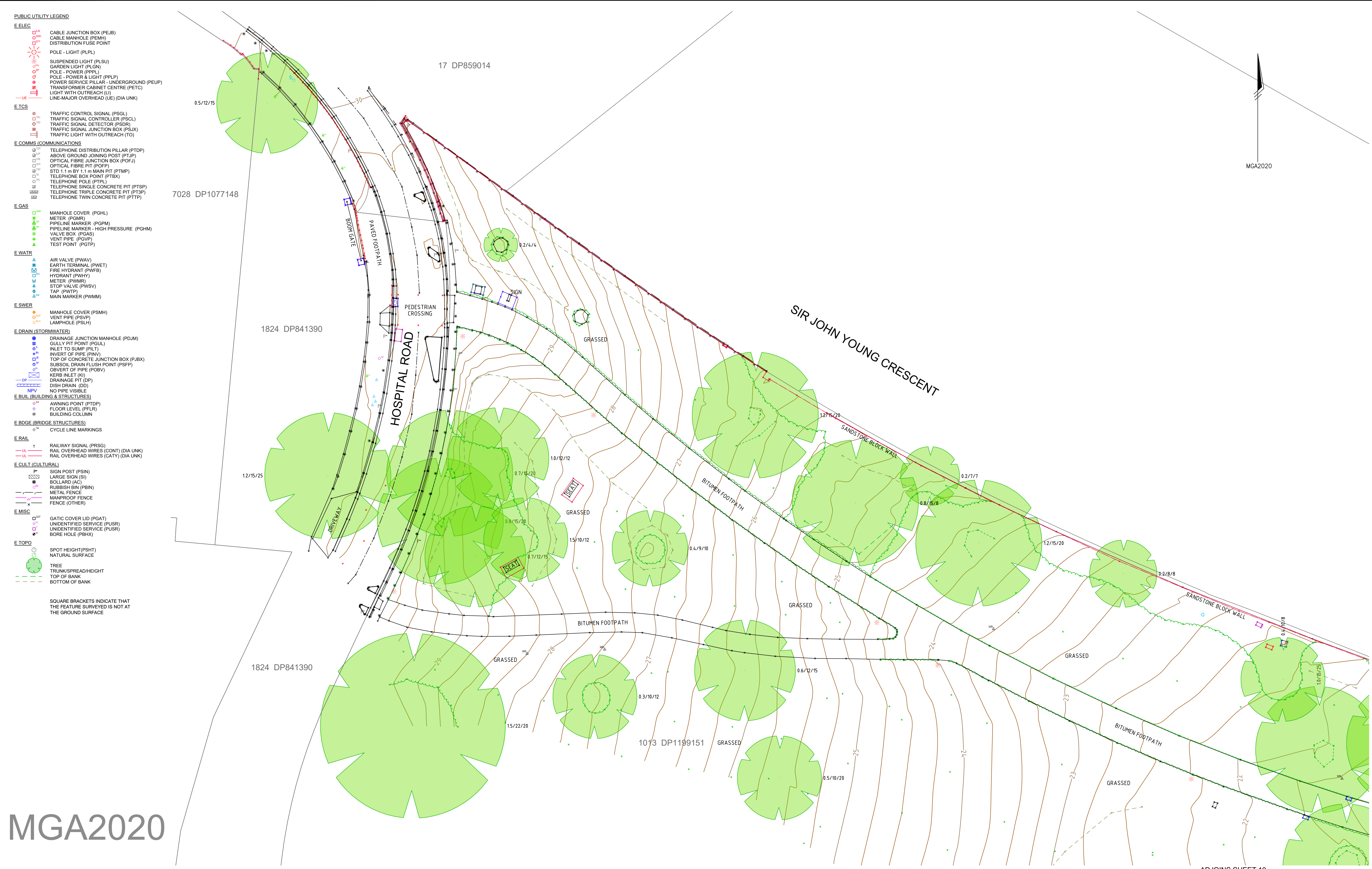
BEFORE YOU DIG

**SHEET 8 OF 10 SHEETS**

**SIZE**

A1





- PUBLIC UTILITY LEGEND**
- E ELEC**
- CABLE JUNCTION BOX (PEJB)
  - CABLE MANHOLE (PEMH)
  - DISTRIBUTION FUSE POINT
  - POLE - LIGHT (PLPL)
  - SUSPENDED LIGHT (PLSU)
  - GARDEN LIGHT (PLGN)
  - POLE - POWER (PPPL)
  - POLE - POWER & LIGHT (PPLP)
  - POWER SERVICE PILLAR - UNDERGROUND (PEUP)
  - TRANSFORMER CABINET CENTRE (PETC)
  - LIGHT WITH OUTREACH (LI)
  - LINE-MAJOR OVERHEAD (UE) (DIA UNK)
- E TCS**
- TRAFFIC CONTROL SIGNAL (PSGL)
  - TRAFFIC SIGNAL CONTROLLER (PSCL)
  - TRAFFIC SIGNAL DETECTOR (PSDR)
  - TRAFFIC SIGNAL JUNCTION BOX (PSJX)
  - TRAFFIC LIGHT WITH OUTREACH (TO)
- E COMMS (COMMUNICATIONS)**
- TELEPHONE DISTRIBUTION PILLAR (PTDP)
  - ABOVE GROUND JOINING POST (PTJP)
  - OPTICAL FIBRE JUNCTION BOX (POFJ)
  - OPTICAL FIBRE PIT (POFP)
  - STD 1.1 m BY 1.1 m MAIN PIT (PTMP)
  - TELEPHONE BOX POINT (PTBX)
  - TELEPHONE POLE (PTPL)
  - TELEPHONE SINGLE CONCRETE PIT (PTSP)
  - TELEPHONE TRIPLE CONCRETE PIT (PT3P)
  - TELEPHONE TWIN CONCRETE PIT (PTTP)
- E GAS**
- MANHOLE COVER (PGHL)
  - METER (PGMR)
  - PIPELINE MARKER (PGPM)
  - PIPELINE MARKER - HIGH PRESSURE (PGHM)
  - VALVE BOX (PGAS)
  - VENT PIPE (PGVP)
  - TEST POINT (PGTP)
- E WATR**
- AIR VALVE (PWAV)
  - EARTH TERMINAL (PWET)
  - FIRE HYDRANT (PWFH)
  - HYDRANT (PWHY)
  - METER (PWMR)
  - STOP VALVE (PWSV)
  - TAP (PWTP)
  - MAIN MARKER (PWMM)
- E SWER**
- MANHOLE COVER (PSMH)
  - VENT PIPE (PSVP)
  - LAMPHOLE (PSLH)
- E DRAIN (STORMWATER)**
- DRAINAGE JUNCTION MANHOLE (PDJM)
  - GULLY PIT POINT (PGUL)
  - INLET TO SUMP (PLT)
  - INVERT OF PIPE (PINV)
  - TOP OF CONCRETE JUNCTION BOX (PJBX)
  - SUBSOIL DRAIN FLUSH POINT (PSFP)
  - OBVERT OF PIPE (POBV)
  - KERB INLET (KI)
  - DRAINAGE PIT (DP)
  - DISH DRAIN (DD)
  - NO PIPE VISIBLE
- E BUIL (BUILDING & STRUCTURES)**
- AWNING POINT (PTDP)
  - FLOOR LEVEL (PFLR)
  - BUILDING COLUMN
- E BDGE (BRIDGE STRUCTURES)**
- CYCLE LINE MARKINGS
- E RAIL**
- RAILWAY SIGNAL (PRSG)
  - RAIL OVERHEAD WIRES (CONT) (DIA UNK)
  - RAIL OVERHEAD WIRES (CATY) (DIA UNK)
- E CULT (CULTURAL)**
- SIGN POST (PSIN)
  - LARGE SIGN (SI)
  - BOLLARD (AC)
  - RUBBISH BIN (PBIN)
  - METAL FENCE
  - MANPROOF FENCE
  - FENCE (OTHER)
- E MISC**
- GATIC COVER LID (PGAT)
  - UNIDENTIFIED SERVICE (PUSR)
  - UNIDENTIFIED SERVICE (PUSR)
  - BORE HOLE (PBHX)
- E TOPO**
- SPOT HEIGHT (PSHT)
  - NATURAL SURFACE
  - TREE
  - TRUNK/SPREAD/HEIGHT
  - TOP OF BANK
  - BOTTOM OF BANK
- SQUARE BRACKETS INDICATE THAT THE FEATURE SURVEYED IS NOT AT THE GROUND SURFACE

MGA2020

REVISIONS							
No.	DATE	REVISION DETAILS	DRAWN	CHK	APP		
B	10.01.2022	BUILDING PARAPETS ADDED	LB	TP	SFG		
A	14.10.2021	INITIAL ISSUE	LB	GS	SFG		

HORIZ. SCALE: 1:200 @ A1		VERT. SCALE: @ A1	
COORDINATES: MGA2020	DATUM: AHD	PRELIMINARY PROJECT CONTROL	PRELIMINARY PROJECT CONTROL
ORIGIN: PRELIMINARY PROJECT CONTROL	ORIGIN: PRELIMINARY PROJECT CONTROL		
4	2	0	4
8	12		
SCALE IN METRES AT ORIGINAL REDUCTION RATIO			

NOTES

EXPLANATORY NOTES & LEGEND ON SHEET 1 ARE APPLICABLE TO ALL SHEETS ON THIS PLAN

CLIENT: NSW GOVERNMENT		sydney METRO	
SURVEY: RPS	DATE OF SURVEY: AUG 2021		
DRAWN: LMB	DATE OF PLAN: 14.10.2021		
CHECKED: GS	DATE LAST SAVED: 10.01.2022		
APPROVED: SFG	DATE APPROVED: 14.10.2021		

TITLE: SMW DETAILED SITE SURVEY - HUNTER STREET STATION		JOB No: PR142446-239	ISSUE: B20
DRAWING No: SMWSDS-RPS-HST-SR-DWG-000557-B(G2020).dwg		SHEET 9 OF 10 SHEETS	
		SIZE: A1	



