

- NOTES**
- BOUNDARIES HAVE BEEN DEFINED BY SURVEY.
 - WALL TO BOUNDARY DIMENSIONS MUST NOT BE USED FOR CONSTRUCTION.
 - IF CONSTRUCTION ON OR NEAR BOUNDARIES IS REQUIRED IT IS RECOMMENDED THAT THE BOUNDARIES OF THE LAND BE MARKED.
 - TREE SIZES ARE ESTIMATES ONLY.
 - THIS PLAN HAS BEEN PREPARED FOR THE EXCLUSIVE USE OF CYRE PROJECTS.
 - RELATIONSHIP OF IMPROVEMENTS TO BOUNDARIES IS DIAGRAMMATIC ONLY. WHERE OFFSETS ARE CRITICAL, THEY SHOULD BE CONFIRMED BY FURTHER SURVEY.
 - EXCEPT WHERE SHOWN BY DIMENSION, LOCATION OF DETAIL WITH RESPECT TO BOUNDARIES IS INDICATIVE ONLY.
 - THIS SURVEY IS RELATED TO MGA2020 56 HORIZONTAL GRID AND AHD71 HEIGHT DATUM.
 - CRITICAL SPOT LEVELS SHOULD BE CONFIRMED WITH SURVEYOR.
 - THIS PLAN IS ONLY TO BE USED FOR THE PURPOSE OF PLANNING A DEVELOPMENT.
 - CONTOURS SHOWN DEPICT THE TOPOGRAPHY. THEY DO NOT REPRESENT THE EXACT LEVEL AT ANY PARTICULAR POINT. ONLY SPOT LEVELS SHOULD BE USED FOR CALCULATIONS OF QUANTITIES WITH CAUTION.
 - CONTOUR INTERVAL - 0.5 metre. SPOT LEVELS SHOULD BE ADOPTED.
 - POSITION OF RIDGE LINES ARE DIAGRAMMATIC ONLY (NOT TO SCALE).
 - THE INFORMATION IS ONLY TO BE USED AT A SCALE ACCURACY OF 1:100.
 - DO NOT SCALE OFF THIS PLAN / FIGURED DIMENSIONS TO BE TAKEN IN PREFERENCE TO SCALED READINGS.
 - COPYRIGHT © V-MARK SURVEY PTY LTD.
 - NO PART OF THIS SURVEY MAY BE REPRODUCED, STORED IN A RETRIEVAL SYSTEM OR TRANSMITTED IN ANY FORM, WITHOUT THE WRITTEN PERMISSION OF THE COPYRIGHT OWNER EXCEPT AS PERMITTED BY THE COPYRIGHT ACT 1968.
 - ANY PERMITTED DOWNLOADING, ELECTRONIC STORAGE, DISPLAY, PRINT, COPY OR REPRODUCTION OF THIS SURVEY SHOULD CONTAIN NO ALTERATION OR ADDITION TO THE ORIGINAL SURVEY.
 - THIS DRAWING IS ONLY VALID FOR 28 DAYS AFTER THE DATE OF LOCATING.
 - UTILITIES HAVE BEEN LOCATED USING ELECTROMAGNETIC LOCATING AND GPR EQUIPMENT.
 - AS-5488-2022 QUALITY LEVELS HAVE BEEN ADOPTED.
 - ALL UTILITIES NEED TO BE POTHOLED TO VERIFY LOCATION AND DEPTH BEFORE CARRYING OUT ANY CONSTRUCTION WORKS.
 - LEVELS OF SURVEYED OBSERVATIONS ARE AT GROUND LEVEL UNLESS NOTED OTHERWISE.
 - NOTATION 12.65m INV Q.L.B. REPRESENTS A QUALITY LEVEL B DEPTH TO THE INVERT OF A SERVICE AS PER AS-5488-2022 AND APPLIES TO THE POINT AND NOT THE LINE.
 - ALL DEPTHS & QUALITY LEVELS APPLY TO THE POINT AND NOT THE LINE. ACTUAL POSITION OF SERVICES MAY VARY SUBSTANTIALLY BETWEEN SURVEYED POINTS.
 - DIAMETERS AND MATERIALS HAVE BEEN OBTAINED FROM BYDA DRAWINGS UNLESS Q.L.A.
 - UTILITIES HAVE BEEN SURVEYED USING TOTAL STATIONS.
 - PLEASE REFER TO CYRE VISITE REPORT FOR FURTHER DETAILS ABOUT SERVICE LOCATION.
 - THIS SURVEY IS RELATED TO GDA2020 56 HORIZONTAL AND AHD71 HEIGHT DATUM.
 - THERE MAY BE SOME UNCERTAINTY AROUND SOME OF THE LOCATING AND WE RECOMMEND NON DESTRUCTIVE EXCAVATION.
 - THIS DRAWING IS DESIGNED TO REDUCE RISK NOT ELIMINATE RISK.
 - THIS DRAWING DOES NOT REPLACE BYDA INFORMATION AND EACH UTILITY OWNERS DUTY OF CARE NEEDS TO BE CONSULTED BEFORE EXCAVATION.
 - THESE NOTES MUST NOT BE REMOVED.

LINE TYPES

WATERMAIN	---	---	---	---
ELECTRICITY	---	---	---	---
OVERHEAD ELECTRICITY	---	---	---	---
TELECOMMUNICATIONS	---	---	---	---
GAS (DIPLO)	---	---	---	---
SEWER	---	---	---	---
STORMWATER	---	---	---	---
NBN LINE	---	---	---	---
OPTUS LINE	---	---	---	---
OPTICAL FIBRE LINE	---	---	---	---
NEXT GEN LINE	---	---	---	---
FUEL LINE	---	---	---	---
UNKNOWN	---	---	---	---
TPG	---	---	---	---
FIRE	---	---	---	---
AAPT	---	---	---	---
COMMS	---	---	---	---
FENCE	---	---	---	---

SYMBOLS

FIRE HOSE REEL	VALVE
FIRE EXTINGUISHER	GAS METER
TAP	GAS MARKER
WATER METER	BENCH MARK
HYDRANT	TREE - 312 TULS.H10 (SPREAD TRUNK HEIGHT)





ANNOTATION

DP - DOWN PIPE	LP - LIGHT POLE
FHT - FENCE HEIGHT	MM - MANHOLE
FL - FLOOR LEVEL	OBV - OBVERT
QL - GROUND LEVEL	PP - POWER POLE
QY - GULLY PIT	RR - ROOF RIDGE
INV - INVERT	SMH - SEWER MANHOLE
IO - INSPECTION OPENING (SEWER)	UTL - UNABLE TO LIFT
IOS - INSPECTION OPENING (STORMWATER)	UTT - UNABLE TO TRACE
KBI - KERB INVERT	TOUT - TOP OF GUTTER
LH - SEWER LAMPHOLE	WHT - WALL HEIGHT


QL.B - SERVICE LOCATED TO QUALITY LEVEL B
INV - 0.65m DEPTH TO INVERT
QL10.56 - GROUND LEVEL 10.56

QUALITY LEVEL RISK MATRIX

CERTAINLY ← → RISK

QL-A		MEASURED DIRECTLY TO UTILITY
QL-B		ELECTRONIC TRACKING OF UTILITY
QL-C		ALIGNED TO SURFACE FEATURES
QL-D		ESTIMATED FROM EXISTING DRAWINGS

D	DJB	STORMWATER EXTENDED	207288	17/11/22
C	CH	STORMWATER ADDED	207192	13/10/22
B	CH	CONTOURS ADDED	206455	06/07/22
A	CH	GENERAL ISSUE	206455	17/05/22
---	CH	PRELIMINARY ISSUE	206455	12/05/22
Rev	Des	Revision/Issue	Ref No	Date



V-MARK SURVEY PTY LTD
18/75 PACIFIC HIGHWAY
WENTWORTH NSW 2077
PH : 02 9016 4235
EMAIL : dave@vmarksurvey.com.au
ABN : 12 109 067 950

CYRE PROJECTS

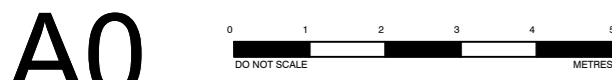
Project	59-67 KARNE STREET NARWEE						
Drawing Title	DETAIL + LEVEL & UTILITIES SURVEY SHEET 1 OF 6						
Vertical Datum	DATUM: AHD BM ADOPTED: SSM 108411 RL: 27.054						
Date	MAY 2022	Drawn	CH	Chk	DJB	Pos	DJB
Scale	NOT TO SCALE	Drawing No.	206455-DL		Rev.	D	

I, Gary Skow, a surveyor registered under the Surveying and Spatial Information Act 2002, certify that:

The boundaries shown in this plan was surveyed in accordance with the Surveying and Spatial Information Regulation 2017, is accurate for the purposes of a development application and the survey was completed on 05/05/22.

Signature:

Dated: 17/05/22
Surveyor Identification No: 1985
Surveyor registered under the Surveying and Spatial Information Act 2002



- | | | | |
|-------------------------|------------------|-------------------|-------------------|
| Date
MAY 2022 | Dwn
CH | Chk
DJB | Pos
DJB |
| Scale | Drawing No. | | Rev. |

QUALITY LEVELS (AS4488)

QUALITY LEVEL A (QL-A)

- SERVICE HAS BEEN EXPOSED, IDENTIFIED AND SURVEYED
- MAXIMUM HORIZONTAL & VERTICAL TOLERANCE +/-50mm

QUALITY LEVEL B (QL-B)

- SERVICE HAS BEEN ELECTRONICALLY TRACED
- MAXIMUM VERTICAL TOLERANCE +/-500mm
- MAXIMUM HORIZONTAL TOLERANCE +/-300mm

QUALITY LEVEL C (QL-C)

- SERVICE HAS NOT BEEN TRACED
- SERVICE HAS BEEN POSITIONED USING PHYSICAL EVIDENCE ONLY
- IN PTS, VALVES & LIDS ETC
- POSITION CANNOT BE RELIED UPON

QUALITY LEVEL D (QL-D)

- SERVICE HAS NOT BEEN TRACED
- SERVICE POSITION HAS BEEN ESTIMATED FROM EXISTING DRAWINGS
- POSITION CANNOT BE RELIED UPON



BOUNDARIES HAVE BEEN DEFINED BY SURVEY.

WALL TO BOUNDARY DIMENSIONS MUST NOT BE USED FOR CONSTRUCTION.

IF CONSTRUCTION ON OR NEAR BOUNDARIES IS REQUIRED IT IS RECOMMENDED THAT THE BOUNDARIES OF THE LAND BE MARKED.

TREE SIZES ARE ESTIMATES ONLY.

THIS PLAN HAS BEEN PREPARED FOR THE EXCLUSIVE USE OF CYRE PROJECTS.

RELATIONSHIP OF IMPROVEMENTS TO BOUNDARIES IS DIAGRAMMATIC ONLY. WHERE OF SETS ARE CRITICAL, THEY SHOULD BE CONFIRMED BY FURTHER SURVEY.

EXCEPT WHERE SHOWN BY DIMENSION LOCATION OF DETAIL WITH RESPECT TO BOUNDARIES IS INDICATIVE ONLY.

THIS SURVEY IS RELATED TO MGA2020 56 HORIZONTAL GRID AND AHD11 HEIGHT DATUM.

CRITICAL SPOT LEVELS SHOULD BE CONFIRMED WITH SURVEYOR.

THIS PLAN IS ONLY TO BE USED FOR THE PURPOSE OF PLANNING A DEVELOPMENT.

CONTOURS SHOWN DEPICT THE TOPOGRAPHY. THEY DO NOT REPRESENT THE EXACT LEVEL AT ANY PARTICULAR POINT. ONLY SPOT LEVELS SHOULD BE USED FOR CALCULATIONS OF QUANTITIES WITH CAUTION.

CONTOUR INTERVAL - 0.5 metre. SPOT LEVELS SHOULD BE ADOPTED.

POSITION OF RIDGE LINES ARE DIAGRAMMATIC ONLY (NOT TO SCALE).

THE INFORMATION IS ONLY TO BE USED AT A SCALE ACCURACY OF 1:100.

DO NOT SCALE OFF THIS PLAN / FIGURED DIMENSIONS TO BE TAKEN IN PREFERENCE TO SCALED READINGS.

COPYRIGHT © V-MARK SURVEY PTY LTD.

NO PART OF THIS SURVEY MAY BE REPRODUCED, STORED IN A RETRIEVAL SYSTEM OR TRANSMITTED IN ANY FORM, WITHOUT THE WRITTEN PERMISSION OF THE COPYRIGHT OWNER EXCEPT AS PERMITTED BY THE COPYRIGHT ACT 1968.

ANY PERMITTED DOWNLOADING, ELECTRONIC STORAGE, DISPLAY, PRINT, COPY OR REPRODUCTION OF THIS SURVEY SHOULD CONTAIN NO ALTERATION OR ADDITION TO THE ORIGINAL SURVEY.

THIS DRAWING IS ONLY VALID FOR 28 DAYS AFTER THE DATE OF LOCATING.

UTILITIES HAVE BEEN LOCATED USING ELECTROMAGNETIC LOCATING AND GPR EQUIPMENT.

AS-5488-2022 QUALITY LEVELS HAVE BEEN ADOPTED.

ALL UTILITIES NEED TO BE POTHOLED TO VERIFY LOCATION AND DEPTH BEFORE CARRYING OUT ANY CONSTRUCTION WORKS.

LEVELS OF SURVEYED OBSERVATIONS ARE AT GROUND LEVEL UNLESS NOTED OTHERWISE.

NOTATION 12.65m INV QL-B REPRESENTS A QUALITY LEVEL B DEPTH TO THE INVERT OF A SERVICE AS PER AS-5488-2022 AND APPLIES TO THE POINT AND NOT THE LINE.

ALL DEPTHS A QUALITY LEVELS APPLY TO THE POINT AND NOT THE LINE. ACTUAL POSITION OF SERVICES MAY VARY SUBSTANTIALLY BETWEEN SURVEYED POINTS.

DIAMETERS AND MATERIALS HAVE BEEN OBTAINED FROM BYDA DRAWINGS UNLESS QLA.

UTILITIES HAVE BEEN SURVEYED USING TOTAL STATIONS.

PLEASE REFER TO CIVILISITE REPORT FOR FURTHER DETAILS ABOUT SERVICE LOCATION.

THIS SURVEY IS RELATED TO GDA2020 56 HORIZONTAL AND AHD11 HEIGHT DATUM.

THERE MAY BE SOME UNCERTAINTY AROUND SOME OF THE LOCATING AND WE RECOMMEND NON DESTRUCTIVE EXCAVATION.

THIS DRAWING DOES NOT REPLACE BYDA INFORMATION AND EACH UTILITY OWNERS DUTY OF CARE NEEDS TO BE CONSULTED BEFORE EXCAVATION.

THESE NOTES MUST NOT BE REMOVED.

LINE TYPES

WATERMAIN

ELECTRICITY

OVERHEAD

TELECOMMUNICATIONS

GAS (UP/CP)

SEWER

STORMWATER

RRN LINE

OPTUS LINE

OPTICAL FIBRE LINE

NEXT GEN LINE

UNKNOWN

TPG

FIRE

AAFT

COMMS

FENCE

SYMBOLS

FIRE HOSE REEL

FX FIRE EXTINGUISHER

TAP

WATER METER

HYDRANT

VALVE

GAS METER

GAS MARKER

BENCH MARK

TREE - S12 T10.5 H10 (SPREAD TRUNK HEIGHT)

ANNOTATION

DP - DOWN PIPE

FHT - FENCE HEIGHT

FL - FLOOR LEVEL

QL - GROUND LEVEL

OY - GULLY PIT

INV - INVERT

IO - INSPECTION OPENING (SEWER)

IOS - INSPECTION OPENING (STORMWATER)

KBI - KERB INVERT

LH - SEWER LAMPHOLE

LP - LIGHT POLE

MH - MANHOLE

OBV - OBVERT

PP - POWER POLE

RR - ROOF RIDGE

SMH - SEWER MANHOLE

UTL - UNABLE TO LIFT

UTT - UNABLE TO TRACE

TGUT - TOP OF GUTTER

WHT - WALL HEIGHT

QUALITY LEVEL RISK MATRIX

CERTAINTY

MEASURED DIRECTLY TO UTILITY

ELECTRONIC TRACING OF UTILITY

ALIGNED TO SURFACE FEATURES

ESTIMATED FROM EXISTING DRAWINGS

D	DJB	STORMWATER EXTENDED	207288	17/11/22
C	CH	STORMWATER ADDED	207192	13/10/22
B	CH	CONTOURS ADDED	206455	06/07/22
A	CH	GENERAL ISSUE	206455	17/05/22
-	CH	PRELIMINARY ISSUE	206455	12/05/22

Client Details

M

V-MARK SURVEY

VMARK SURVEY PTY LTD

18/75 PACIFIC HIGHWAY

WATKINS NSW 2077

PH : 02 9016 4235

EMAIL : djb@vmarksurvey.com.au

ABN : 12 109 067 950

CYRE PROJECTS

Project

59-67 KARNE STREET NARWEE

Drawing Title

DETAIL + LEVEL & UTILITIES SURVEY

SHEET 4 OF 6

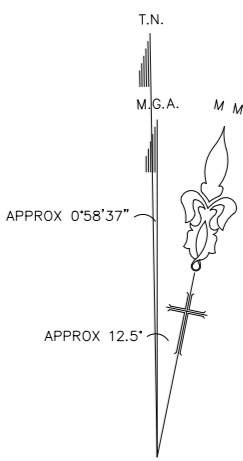
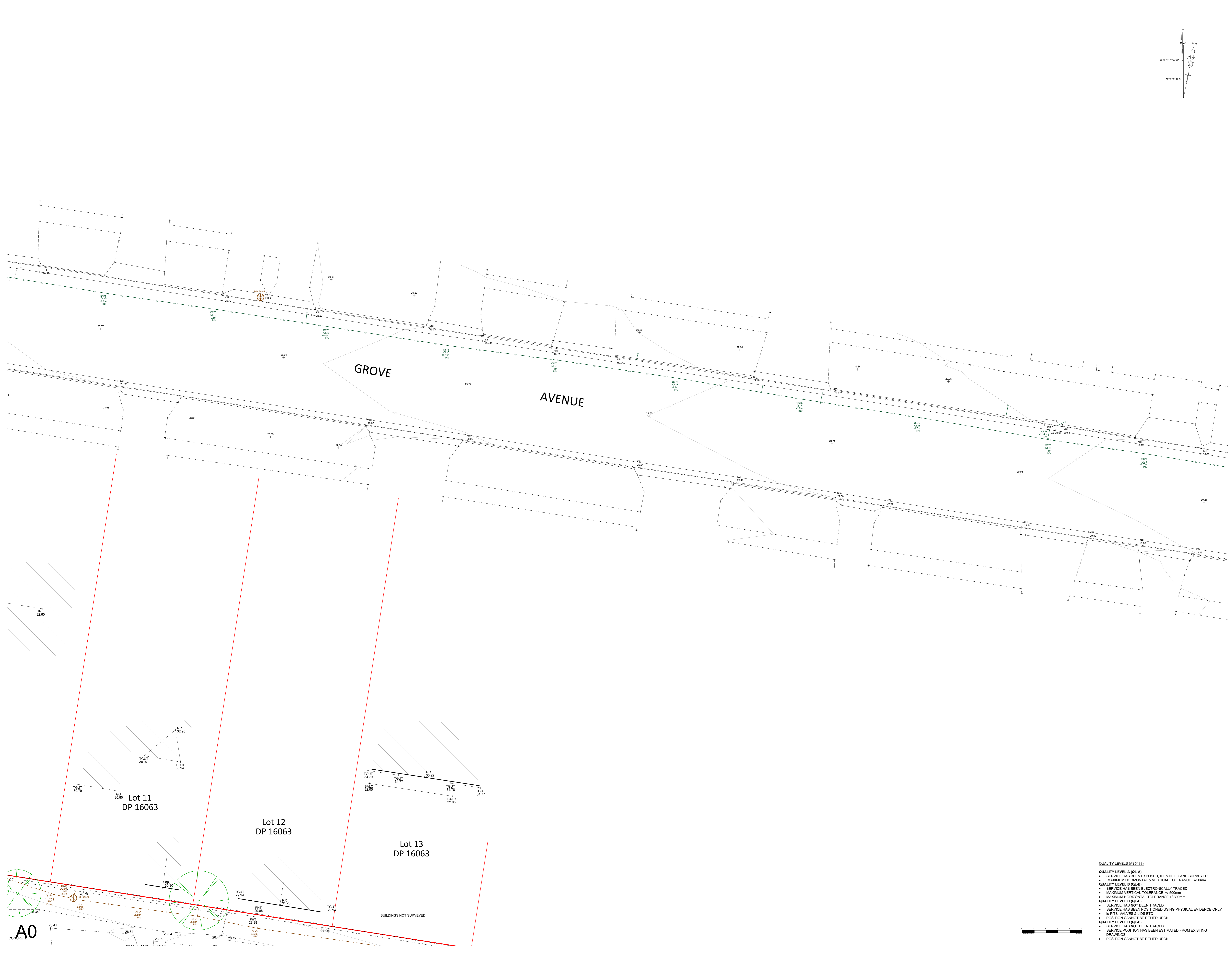
Vertical Datum

DATUM: AHD

BM ADOPTED: SSM 108411

RL: 27.054

Date	MAY 2022	Drawn By	CH	CN	DJB	Pos	DJB
Scale	1:100@A0	Drawing No.	206455-DL	Rev.	D		



- NOTES**
- BOUNDARIES HAVE BEEN DEFINED BY SURVEY
 - WALL TO BOUNDARY DIMENSIONS MUST NOT BE USED FOR CONSTRUCTION
 - IF CONSTRUCTION ON OR NEAR BOUNDARIES IS REQUIRED IT IS RECOMMENDED THAT THE BOUNDARIES OF THE LAND BE MARKED
 - TREE SIZES ARE ESTIMATES ONLY
 - THIS PLAN HAS BEEN PREPARED FOR THE EXCLUSIVE USE OF CYRE PROJECTS
 - RELATIONSHIP OF IMPROVEMENTS TO BOUNDARIES IS DIAGRAMMATIC ONLY. WHERE OFFSETS ARE CRITICAL, THEY SHOULD BE CONFIRMED BY FURTHER SURVEY
 - EXCEPT WHERE SHOWN BY DIMENSION LOCATION OF DETAIL WITH RESPECT TO BOUNDARIES IS INDICATIVE ONLY
 - THIS SURVEY IS RELATED TO MGA2020 56 HORIZONTAL GRID AND AHD71 HEIGHT DATUM
 - CRITICAL SPOT LEVELS SHOULD BE CONFIRMED WITH SURVEYOR
 - THIS PLAN IS ONLY TO BE USED FOR THE PURPOSE OF PLANNING A DEVELOPMENT
 - CONTOURS SHOWN DEPICT THE TOPOGRAPHY. THEY DO NOT REPRESENT THE EXACT LEVEL AT ANY PARTICULAR POINT. ONLY SPOT LEVELS SHOULD BE USED FOR CALCULATIONS OF QUANTITIES WITH CAUTION
 - CONTOUR INTERVAL - 0.5 metre. SPOT LEVELS SHOULD BE ADOPTED
 - POSITION OF RIDGE LINES ARE DIAGRAMMATIC ONLY (NOT TO SCALE)
 - THE INFORMATION IS ONLY TO BE USED AT A SCALE ACCURACY OF 1:100
 - DO NOT SCALE OFF THIS PLAN / FIGURED DIMENSIONS TO BE TAKEN IN PREFERENCE TO SCALED READINGS
 - COPYRIGHT © V-MARK SURVEY PTY LTD
 - NO PART OF THIS SURVEY MAY BE REPRODUCED, STORED IN A RETRIEVAL SYSTEM OR TRANSMITTED IN ANY FORM, WITHOUT THE WRITTEN PERMISSION OF THE COPYRIGHT OWNER EXCEPT AS PERMITTED BY THE COPYRIGHT ACT 1968
 - ANY PERMITTED DOWNLOADING, ELECTRONIC STORAGE, DISPLAY, PRINT, COPY OR REPRODUCTION OF THIS SURVEY SHOULD CONTAIN NO ALTERATION OR ADDITION TO THE ORIGINAL SURVEY
 - THIS DRAWING IS ONLY VALID FOR 28 DAYS AFTER THE DATE OF LOCATING
 - UTILITIES HAVE BEEN LOCATED USING ELECTROMAGNETIC LOCATING AND GPR EQUIPMENT
 - AS-5488-2022 QUALITY LEVELS HAVE BEEN ADOPTED
 - ALL UTILITIES NEED TO BE POTHOLED TO VERIFY LOCATION AND DEPTH BEFORE CARRYING OUT ANY CONSTRUCTION WORKS
 - LEVELS OF SURVEYED OBSERVATIONS ARE AT GROUND LEVEL UNLESS NOTED OTHERWISE
 - NOTATION '0.65m INV QL-B' REPRESENTS A QUALITY LEVEL B DEPTH TO THE INVERT OF A SERVICE AS PER AS-5488-2022 AND APPLIES TO THE POINT AND NOT THE LINE
 - ALL DEPTHS A QUALITY LEVELS APPLIES TO THE POINT AND NOT THE LINE. ACTUAL POSITION OF SERVICES MAY VARY SUBSTANTIALLY BETWEEN SURVEYED POINTS
 - DIAMETERS AND MATERIALS HAVE BEEN OBTAINED FROM BYDA DRAWINGS UNLESS QLA
 - UTILITIES HAVE BEEN SURVEYED USING TOTAL STATIONS
 - PLEASE REFER TO CIVISITE REPORT FOR FURTHER DETAILS ABOUT SERVICE LOCATION
 - THIS SURVEY IS RELATED TO GDA2020 56 HORIZONTAL AND AHD71 HEIGHT DATUM
 - THERE MAY BE SOME UNCERTAINTY AROUND SOME OF THE LOCATING AND WE RECOMMEND NON DESTRUCTIVE EXCAVATION
 - THIS DRAWING IS DESIGNED TO REDUCE RISK NOT ELIMINATE RISK
 - THIS DRAWING DOES NOT REPLACE BYDA INFORMATION AND EACH UTILITY OWNERS DUTY OF CARE NEEDS TO BE CONSULTED BEFORE EXCAVATION
 - THESE NOTES MUST NOT BE REMOVED

LINE TYPES

WATERMAIN	—	—	—	—	—
ELECTRICITY	—	—	—	—	—
TELECOMMUNICATIONS	—	—	—	—	—
GAS (DIPCO)	—	—	—	—	—
STORMWATER	—	—	—	—	—
SEWER LINE	—	—	—	—	—
OPTUS LINE	—	—	—	—	—
OPTICAL FIBRE LINE	—	—	—	—	—
NEXT GEN LINE	—	—	—	—	—
FUEL LINE	—	—	—	—	—
UNKNOWN	—	—	—	—	—
TPG	—	—	—	—	—
FIRE	—	—	—	—	—
AAFT	—	—	—	—	—
COMMS	—	—	—	—	—
FENCE	—	—	—	—	—

SYMBOLS

—	FIRE HOSE REEL	—	VALVE
—	FIRE EXTINGUISHER	—	GAS METER
—	TAP	—	GAS MARKER
—	WATER METER	—	BENCH MARK
—	HYDRANT	—	TREE - 12 TO 15 H10 (SPREAD TRUNK HEIGHT)

ANNOTATION

DP - DOWN PIPE	LP - LIGHT POLE
FHT - FENCE HEIGHT	MH - MANHOLE
FL - FLOOR LEVEL	OBV - OBVERT
QL - GROUND LEVEL	PP - POWER POLE
QY - GULLY PIT	RR - ROOF RIDGE
INV - INVERT	SMH - SEWER MANHOLE
IO - INSPECTION OPENING (SEWER)	UTL - UNABLE TO LIFT
IOS - INSPECTION OPENING (STORMWATER)	UTL - UNABLE TO TRACE
KBI - KERB INVERT	TGUT - TOP OF GUTTER
LH - SEWER LAMPHOLE	WHT - WALL HEIGHT

QUALITY LEVEL RISK MATRIX

QL-B	0.65m	0.65m DEPTH TO INVERT	SERVICE LOCATED TO QUALITY LEVEL B
INV	0.65m	0.65m DEPTH TO INVERT	GROUND LEVEL 10.56

QUALITY LEVEL RISK MATRIX

QL-A	MEASURED DIRECTLY TO UTILITY
QL-B	ELECTRONIC TRACING OF UTILITY
QL-C	ALIGNED TO SURFACE FEATURES
QL-D	ESTIMATED FROM EXISTING DRAWINGS

D	DJB	STORMWATER EXTENDED	207288	17/11/22
C	CH	STORMWATER ADDED	207192	13/10/22
B	CH	CONTOURS ADDED	206455	06/07/22
A	CH	GENERAL ISSUE	206455	17/05/22
—	CH	PRELIMINARY ISSUE	206455	12/05/22

Rev	Desc	Revision/Issue	Ref No	Date
-----	------	----------------	--------	------

V-MARK SURVEY PTY LTD
18/75 PACIFIC HIGHWAY
NARREE, NSW 2777
PH : 02 9016 4235
EMAIL : info@vmarksurvey.com.au
ABN : 12 109 067 950

Client Details

CYRE PROJECTS

Project
59-67 KARNE STREET NARREE

Drawing Title
**DETAIL + LEVEL & UTILITIES SURVEY
SHEET 5 OF 6**

Vertical Datum
**DATUM: AHD
BM ADOPTED: SSM 108411
RL: 27.054**

Date	By	CHK	Pos
MAY 2022	CH	DJB	DJB
Scale	Drawing No.	Rev.	
1:100@A0	206455-DL	D	

- QUALITY LEVELS (AS5488)**
- QUALITY LEVEL A (QL-A)**
 - SERVICE HAS BEEN EXPOSED, IDENTIFIED AND SURVEYED
 - MAXIMUM HORIZONTAL & VERTICAL TOLERANCE +/-50mm
 - QUALITY LEVEL B (QL-B)**
 - SERVICE HAS BEEN ELECTRONICALLY TRACED
 - SERVICE HAS NOT BEEN TRACED
 - SERVICE HAS BEEN POSITIONED USING PHYSICAL EVIDENCE ONLY
 - IN PITS, VALVES & LIDS ETC
 - POSITION CANNOT BE RELIED UPON
 - QUALITY LEVEL C (QL-C)**
 - SERVICE HAS NOT BEEN TRACED
 - SERVICE POSITION HAS BEEN ESTIMATED FROM EXISTING DRAWINGS
 - POSITION CANNOT BE RELIED UPON
 - QUALITY LEVEL D (QL-D)**
 - SERVICE HAS NOT BEEN TRACED
 - SERVICE POSITION HAS BEEN ESTIMATED FROM EXISTING DRAWINGS
 - POSITION CANNOT BE RELIED UPON

