

# Cumberland West Mental Health Services Relocation

## Landscape Package SSDA

### Drawing Schedule

Drawing Number	Drawing Title	Scale
IMHC-LS-DG-0000	Landscape Coversheet	N/A
IMHC-LS-DG-0001	Landscape Site Plan	1:250
IMHC-LS-DG-0100	Landscape Plan Ground	1:200
IMHC-LS-DG-0110	Landscape Plan Level 1	1:200
IMHC-LS-DG-0120	Landscape Plan Level 2	1:200
IMHC-LS-DG-0130	Landscape Plan Level 3	1:200
IMHC-LS-DG-0140	Landscape Plan Level 4	1:200
IMHC-LS-DG-0150	Landscape Plan Level 5	1:200
IMHC-LS-DG-0160	Landscape Plan Level 6	1:200
IMHC-LS-DG-0170	Landscape Plan Level 7	1:200
IMHC-LS-DG-0180	Landscape Plan Level 8	1:200
IMHC-LS-DG-0190	Landscape Plan Level 9	1:200

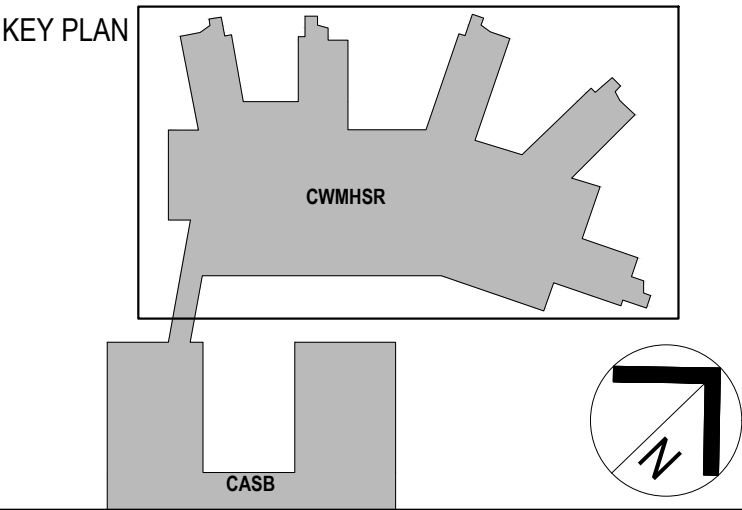


Site Plan | 1:500

NOTES

1. DO NOT SCALE DRAWINGS. WRITTEN DIMENSIONS GOVERN.
2. ALL DIMENSIONS ARE IN MILLIMETRES UNLESS NOTED OTHERWISE.
3. ALL DIMENSIONS SHALL BE VERIFIED ON SITE BEFORE PROCEEDING WITH THE WORK.
4. THIS DRAWING MUST BE READ IN CONJUNCTION WITH ALL RELEVANT CONTRACTS, SPECIFICATIONS, REPORTS AND DRAWINGS.
5. ALL DRAWINGS TO BE PRINTED IN COLOUR. DO NOT PHOTOCOPIY - PRINT ORIGINAL FROM ELECTRONIC FILE FOR HARD COPY.
6. VARIATIONS TO WORK SHOWN MUST BE BROUGHT TO THE PRINCIPALS ATTENTION AND APPROVED IN WRITING BEFORE PROCEEDING.
7. THIS DRAWING IS COPYRIGHT AND THE PROPERTY OF THE PRINCIPAL AND MUST NOT BE RETAINED, COPIED OR USED WITHOUT THE PERMISSION OF THE AUTHOR.
8. THIS DRAWING IS AN UNCONTROLLED COPY UNLESS NOTED OTHERWISE.

REV	DATE	AMENDMENT
8	20/01/25	SSDA MODIFICATION
7	17/10/24	SSDA MODIFICATION
6	18/04/23	EXISTING TREES LOCATIONS UPDATED
5	14/02/23	SCALE BAR ADDED
4	28/11/22	ISSUE FOR INFORMATION
3	24/11/22	ISSUE FOR INFORMATION
2	25/07/22	ISSUE FOR INFORMATION
1	30/05/22	ISSUE FOR INFORMATION
0	18/10/21	PRELIMINARY ISSUE



CONSULTANTS

**SITE IMAGE**

Landscape Architects  
Level 1, 3-5 Baptist Street  
Redfern NSW 2016  
Australia

Tel: (61 2) 8332 5600  
Fax: (61 2) 9898 2877  
www.sterimage.com.au

CLIENT

**NSW GOVERNMENT** Health  
Western Sydney  
Local Health District

**NSW GOVERNMENT** Health  
Infrastructure

**Jacobs**

Level 7, 177 Pacific Highway,  
North Sydney, NSW, 2060  
Tel: +61 2 9528 2100  
Fax: +61 2 9528 2510  
Web: jacobson.com

PROJECT  
**CUMBERLAND WEST  
MENTAL HEALTH  
SERVICES RELOCATION**

PROJECT NO.  
**SS20-4579**

DRAWING TITLE  
**LANDSCAPE COVER SHEET**

STATUS  
**SSDA**

DRAWN  
**RG**

DESIGNED  
**NM**

CHECKED  
**JD**

APPROVED  
**NM**

SCALE @ B1  
**1:500**

0 2 5 10 15 25m

DRAWING NO.  
**IMHC-LS-DG-0000**

REVISION  
**8**



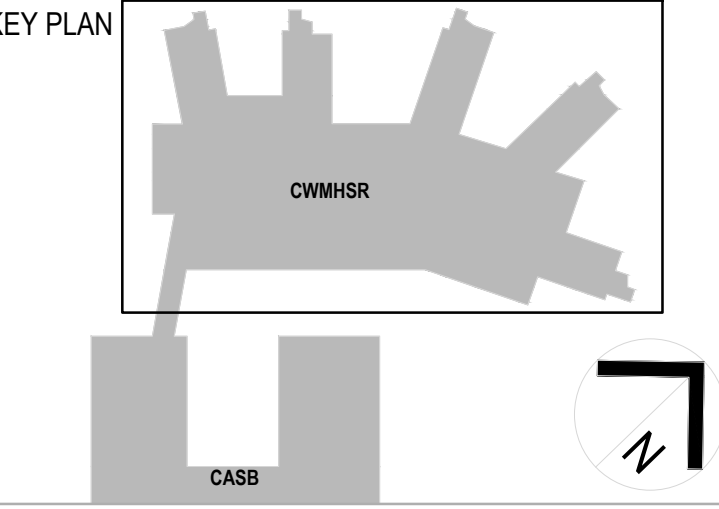


- Extent of Works
- Existing Trees to be Retained
- Existing Trees to be Removed
- Existing Trees to be Removed as Part of Other Approval
- Tree Protection Zone
- Proposed Trees
- Proposed Grasses and Groundcovers
- Bioretention Basin Planting
- Turf
- Hard Garden Edging
- Coloured Concrete Paving
- Coloured Concrete Paving
- Sandstone Logs
- Pergola Structure Over
- Bench Seating

NOTES

1. DO NOT SCALE DRAWINGS. WRITTEN DIMENSIONS GOVERN.
2. ALL DIMENSIONS ARE IN MILLIMETRES UNLESS NOTED OTHERWISE.
3. ALL DIMENSIONS SHALL BE VERIFIED ON SITE BEFORE PROCEEDING WITH THE WORK. JACOBS SHALL BE NOTIFIED IN WRITING OF ANY DISCREPANCIES.
4. THIS DRAWING MUST BE READ IN CONJUNCTION WITH ALL RELEVANT CONTRACTS, SPECIFICATIONS, REPORTS AND DRAWINGS.
5. ALL DRAWINGS TO BE PRINTED IN COLOUR. DO NOT PHOTOCOPY - PRINT ORIGINAL FROM ELECTRONIC FILE FOR HARD COPY.
6. VARIATIONS TO WORK SHOWN MUST BE BROUGHT TO THE PRINCIPALS ATTENTION AND APPROVED IN WRITING BEFORE PROCEEDING.
7. THIS DRAWING IS COPYRIGHT AND THE PROPERTY OF THE PRINCIPAL AND MUST NOT BE REPRODUCED, COPIED OR USED WITHOUT THE PERMISSION OF THE AUTHOR.
8. THIS DRAWING IS AN UNCONTROLLED COPY UNLESS NOTED OTHERWISE.

REV	DATE	DESCRIPTION
10	20/11/25	SSDA MODIFICATION
9	17/10/24	SSDA MODIFICATION
8	21/07/23	TREE INFORMATION ADDED
7	18/05/23	EXISTING TREES LOCATIONS UPDATED
6	18/04/23	EXISTING TREES LOCATIONS UPDATED
5	14/02/23	SCALE BAR ADDED
4	28/11/22	ISSUE FOR INFORMATION
3	24/11/22	ISSUE FOR INFORMATION
2	22/07/22	ISSUE FOR INFORMATION
1	30/05/22	ISSUE FOR INFORMATION
0	18/10/21	PRELIMINARY ISSUE



CONSULTANTS

SITE IMAGE

Landscape Architects  
Level 1, 3-5 Baptist Street  
Redfern NSW 2016  
Australia

Tel: (61 2) 8332 5800  
Fax: (61 2) 9898 2877  
www.siterimage.com.au

CLIENT

NSW GOVERNMENT Health Western Sydney Local Health District

NSW GOVERNMENT Health Infrastructure

**Jacobs**

Level 7, 177 Pacific Highway,  
North Sydney, NSW, 2060  
Tel: +61 2 9528 2100  
Fax: +61 2 9528 2510  
Web: jacobcs.com

PROJECT  
CUMBERLAND WEST  
MENTAL HEALTH  
SERVICES RELOCATION

PROJECT NO.  
SS20-4579

DRAWING TITLE  
LANDSCAPE SITE PLAN

STATUS  
SSDA

DRAWN  
RG

CHECKED  
JD

DESIGNED  
NM

APPROVED  
NM

SCALE @ B1  
1 : 300

DRAWING NO.  
IMHC-LS-DG-0001

REVISION  
10





- Extent of Works
- Existing Trees to be Retained
- Existing Trees to be Removed
- Existing Trees to be Removed as Part of Other Approval
- Tree Protection Zone
- Proposed Trees
- Proposed Grasses and Groundcovers
- Bioretention Basin Planting
- Turf
- Hard Garden Edging
- Coloured Concrete Paving
- Coloured Concrete Paving
- Sandstone Logs
- Pergola Structure Over
- Bench Seating

NOTES

1. DO NOT SCALE DRAWINGS. WRITTEN DIMENSIONS GOVERN.

2. ALL DIMENSIONS ARE IN MILLIMETRES UNLESS NOTED OTHERWISE.

3. ALL DIMENSIONS SHALL BE VERIFIED ON SITE BEFORE PROCEEDING WITH THE WORK.

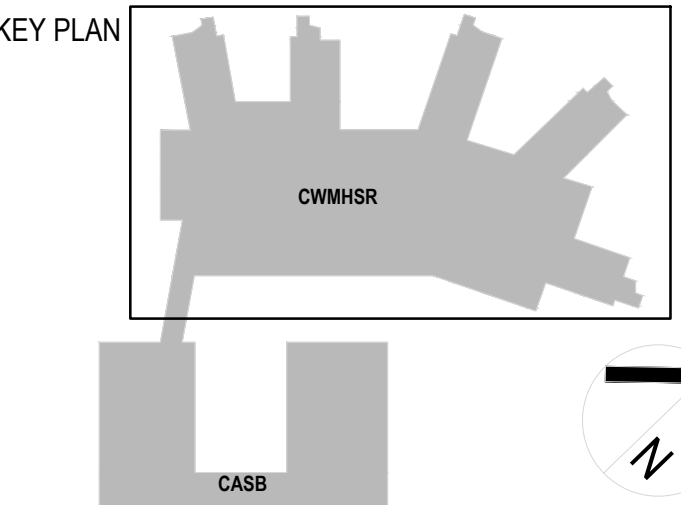
4. THIS DRAWING MUST BE READ IN CONJUNCTION WITH ALL RELEVANT CONTRACTS, SPECIFICATIONS, REPORTS AND DRAWINGS.

5. VARIATIONS TO WORK SHOWN MUST BE BROUGHT TO THE PRINCIPALS ATTENTION AND APPROVED IN WRITING BEFORE PROCEEDING.

6. THIS DRAWING IS COPYRIGHT AND THE PROPERTY OF THE PRINCIPAL AND MUST NOT BE RETAINED, COPIED OR USED WITHOUT THE PERMISSION OF THE AUTHOR.

THIS DRAWING IS AN UNCONTROLLED COPY UNLESS NOTED OTHERWISE.

REV	DATE	DESCRIPTION
9	20/11/25	SSDA MODIFICATION
8	21/11/24	SSDA MODIFICATION
7	11/10/24	SSDA MODIFICATION
6	19/07/23	TREE INFORMATION ADDED
5	14/02/23	SCALE BAR ADDED
4	28/10/22	ISSUE FOR INFORMATION
3	24/11/22	ISSUE FOR INFORMATION
2	22/07/22	ISSUE FOR INFORMATION
1	30/05/22	ISSUE FOR INFORMATION
0	18/10/21	PRELIMINARY ISSUE



CONSULTANTS

SITE IMAGE

Landscape Architects  
Level 1, 3-5 Baptist Street  
Redfern NSW 2016  
Australia

Tel: (61 2) 8332 5800  
Fax: (61 2) 9898 2877  
www.sternimage.com.au

CLIENT

NSW GOVERNMENT Health Western Sydney Local Health District

NSW GOVERNMENT Health Infrastructure

Jacobs

Level 7, 177 Pacific Highway,  
North Sydney, NSW, 2060  
Tel: +61 2 9528 2100  
Fax: +61 2 9528 2510  
Web: jacobs.com

PROJECT  
CUMBERLAND WEST  
MENTAL HEALTH  
SERVICES RELOCATION

PROJECT NO.  
SS20-4579

DRAWING TITLE  
LANDSCAPE PLAN  
GROUND

STATUS	SSDA
DRAWN	RG
CHECKED	JD
DESIGNED	NM
APPROVED	NM

SCALE @ B1  
1 : 200

DRAWING NO.  
IMHC-LS-DG-0100

REVISION  
9





**NOTES**

1. DO NOT SCALE DRAWINGS. WRITTEN DIMENSIONS GOVERN.  
2. ALL DIMENSIONS ARE IN MILLIMETRES UNLESS NOTED OTHERWISE.  
3. ALL DIMENSIONS SHALL BE VERIFIED ON SITE BEFORE PROCEEDING WITH THE WORK. JACOBS SHALL BE NOTIFIED IN WRITING OF ANY DISCREPANCIES.  
4. THIS DRAWING MUST BE READ IN CONJUNCTION WITH ALL RELEVANT CONTRACTS, SPECIFICATIONS, REPORTS AND DRAWINGS.  
5. ALL DRAWINGS TO BE PRINTED IN COLOUR. DO NOT PHOTOCOPIY - PRINT ORIGINAL FROM ELECTRONIC FILE FOR HARD COPY.  
6. VARIATIONS TO WORK SHOWN MUST BE BROUGHT TO THE PRINCIPALS ATTENTION AND APPROVED IN WRITING BEFORE PROCEEDING.  
7. THIS DRAWING IS COPYRIGHT AND THE PROPERTY OF THE PRINCIPAL AND MUST NOT BE RETAINED, COPIED OR USED WITHOUT THE PERMISSION OF THE AUTHOR.  
THIS DRAWING IS AN UNCONTROLLED COPY UNLESS NOTED OTHERWISE.

REV	DATE	AMENDMENT
9	20/11/25	SSDA MODIFICATION
8	21/11/24	SSDA MODIFICATION
7	11/10/24	KOPV AMENDMENTS
6	21/07/23	TREE INFORMATION ADDED
5	14/02/23	SCALE BAR ADDED
4	28/10/22	ISSUE FOR INFORMATION
3	24/11/22	ISSUE FOR INFORMATION
2	20/07/22	ISSUE FOR INFORMATION
1	30/05/22	ISSUE FOR INFORMATION
0	18/10/21	PRELIMINARY ISSUE

**KEY PLAN**

**CONSULTANTS**

**SITE IMAGE**

**CLIENT**

**Health Western Sydney Local Health District**

**Health Infrastructure**

**Jacobs**

Level 7, 177 Pacific Highway,  
North Sydney, NSW, 2060  
Tel: +61 2 9528 2100  
Fax: +61 2 9528 2510  
Web: jacobs.com

**PROJECT**

**CUMBERLAND WEST MENTAL HEALTH SERVICES RELOCATION**

**PROJECT NO.**

**SS20-4579**

**DRAWING TITLE**

**LANDSCAPE PLAN LEVEL 1**

**STATUS**

**SSDA**

**DRAWN**

**RG**

**DESIGNED**

**NM**

**CHECKED**

**JD**

**APPROVED**

**NM**

**SCALE @ B1**

**1 : 200**

**DRAWING NO.**

**IMHC-LS-DG-0110**

**REVISION**

**9**



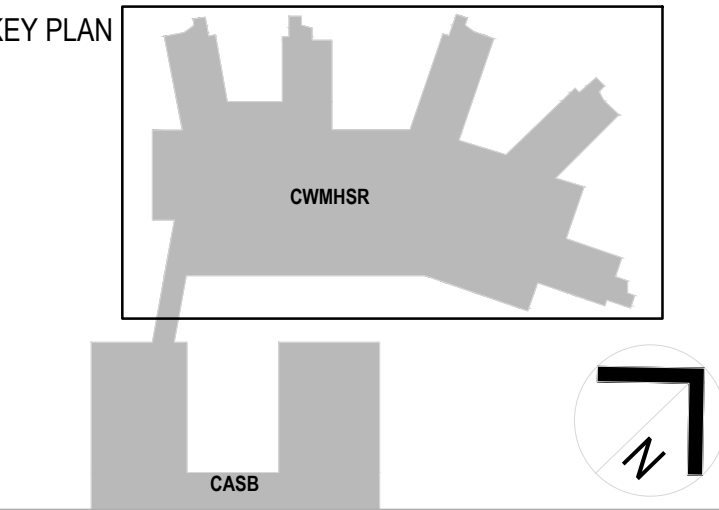


- Extent of Works
- Proposed Trees
- Proposed Shrubs and Accents
- Proposed Grasses and Groundcovers
- Coloured Concrete Paving
- Coloured Concrete Paving
- Artificial Turf
- Bench Seating
- Raised Planter
- Free Standing Fixed Seating
- Tamper Proof Bench Seat
- Raised Garden Beds with Frangible/Grafter Trees and Seating Surround
- Water Feature

NOTES

1. DO NOT SCALE DRAWINGS. WRITTEN DIMENSIONS GOVERN.  
2. ALL DIMENSIONS ARE IN MILLIMETRES UNLESS NOTED OTHERWISE.  
3. ALL DIMENSIONS SHALL BE VERIFIED ON SITE BEFORE PROCEEDING WITH THE WORK. JACOBS SHALL BE NOTIFIED IN WRITING OF ANY DISCREPANCIES.  
4. THIS DRAWING MUST BE READ IN CONJUNCTION WITH ALL RELEVANT CONTRACTS, SPECIFICATIONS, REPORTS AND DRAWINGS.  
5. ALL DRAWINGS TO BE PRINTED IN COLOUR. DO NOT PHOTOCOPIY - PRINT ORIGINAL FROM ELECTRONIC FILE FOR HARD COPY.  
6. VARIATIONS TO WORK SHOWN MUST BE BROUGHT TO THE PRINCIPALS ATTENTION AND APPROVED IN WRITING BEFORE PROCEEDING.  
7. THIS DRAWING IS COPYRIGHT AND THE PROPERTY OF THE PRINCIPAL AND MUST NOT BE RETAINED, COPIED OR USED WITHOUT THE PERMISSION OF THE AUTHOR.  
THIS DRAWING IS AN UNCONTROLLED COPY UNLESS NOTED OTHERWISE.

REV	DATE	AMENDMENT
6	20/11/25	SSDA MODIFICATION
5	14/02/23	SCALE BAR ADDED
4	28/10/22	ISSUE FOR INFORMATION
3	24/11/22	ISSUE FOR INFORMATION
2	22/07/22	ISSUE FOR INFORMATION
1	30/05/22	ISSUE FOR INFORMATION
0	18/10/21	PRELIMINARY ISSUE



CONSULTANTS

SITE IMAGE

Landscape Architects  
Level 1, 3-5 Baptist Street  
Redfern NSW 2016  
Australia  
Tel: (61 2) 8332 5800  
Fax: (61 2) 9898 2877  
www.sterimage.com.au

CLIENT

NSW GOVERNMENT Health Western Sydney Local Health District

NSW GOVERNMENT Health Infrastructure

Jacobs

Level 7, 177 Pacific Highway,  
North Sydney, NSW, 2060  
Tel: +61 2 9528 2100  
Fax: +61 2 9528 2510  
Web: jacobs.com

PROJECT

CUMBERLAND WEST  
MENTAL HEALTH  
SERVICES RELOCATION

PROJECT NO.

SS20-4579

DRAWING TITLE

LANDSCAPE PLAN  
LEVEL 2

STATUS

SSDA

DRAWN

RG

DESIGNED

NM

CHECKED

JD

APPROVED

NM

SCALE @ B1

1 : 200

0 1 2 4 6 10m

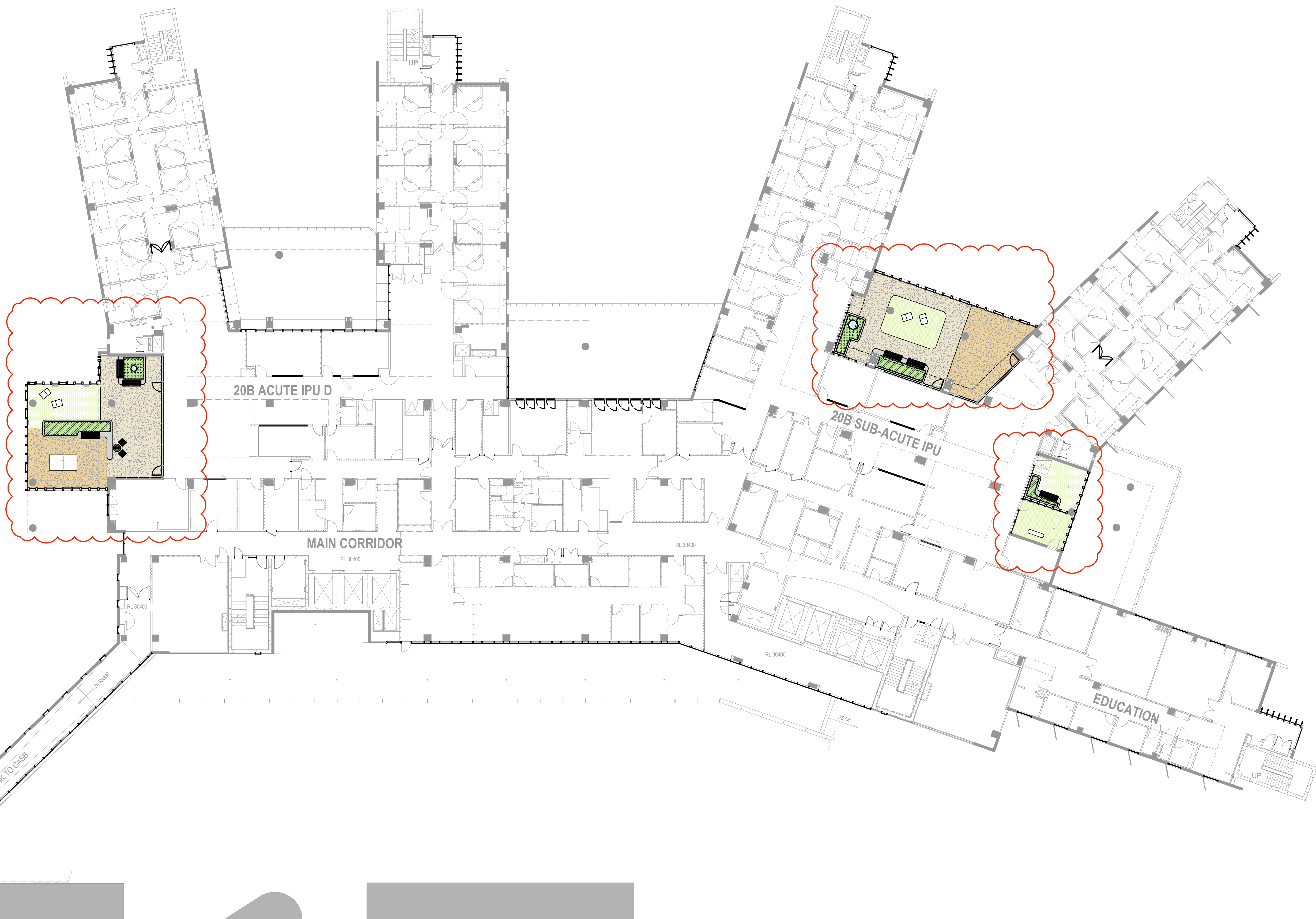
DRAWING NO.

IMHC-LS-DG-0120

REVISION

6





- Extent of Works
- Proposed Trees
- Proposed Shrubs and Accents
- Proposed Grasses and Groundcovers
- Coloured Concrete Paving
- Coloured Concrete Paving
- Artificial Turf
- Bench Seating
- Raised Planter
- Free Standing Fixed Seating
- Tamper Proof Bench Seat
- Raised Garden Beds with Frangible/Grafter Trees and Seating Surround
- Water Feature

NOTES

1. DO NOT SCALE DRAWINGS. WRITTEN DIMENSIONS GOVERN.

2. ALL DIMENSIONS ARE IN MILLIMETRES UNLESS NOTED OTHERWISE.

3. ALL DIMENSIONS SHALL BE VERIFIED ON SITE BEFORE PROCEEDING WITH THE WORK. JACOBS SHALL BE NOTIFIED IN WRITING OF ANY DISCREPANCIES.

4. THIS DRAWING MUST BE READ IN CONJUNCTION WITH ALL RELEVANT CONTRACTS, SPECIFICATIONS, REPORTS AND DRAWINGS.

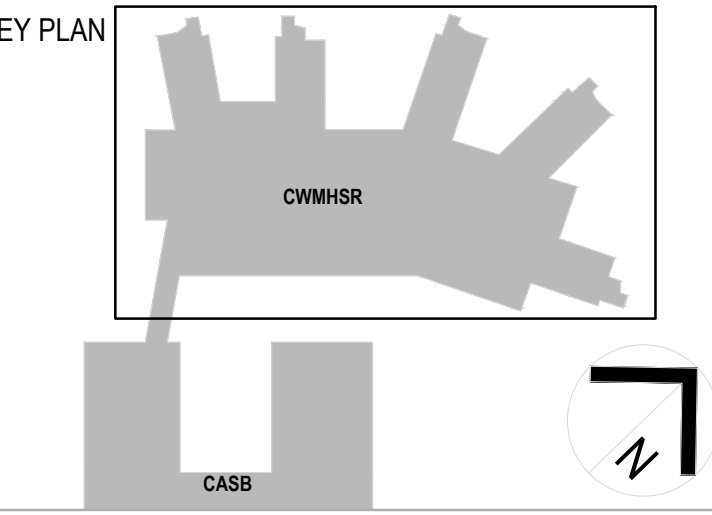
5. ALL DRAWINGS TO BE PRINTED IN COLOUR. DO NOT PHOTOCOPIY - PRINT ORIGINAL FROM ELECTRONIC FILE FOR HARD COPY.

6. VARIATIONS TO WORK SHOWN MUST BE BROUGHT TO THE PRINCIPALS ATTENTION AND APPROVED IN WRITING BEFORE PROCEEDING.

7. THIS DRAWING IS COPYRIGHT AND THE PROPERTY OF THE PRINCIPAL AND MUST NOT BE RETAINED, COPIED OR USED WITHOUT THE PERMISSION OF THE AUTHOR.

THIS DRAWING IS AN UNCONTROLLED COPY UNLESS NOTED OTHERWISE.

REV	DATE	AMENDMENT
7	20/11/25	SSDA MODIFICATION
6	21/11/24	SSDA MODIFICATION
5	14/02/23	SCALE BAR ADDED
4	28/10/22	ISSUE FOR INFORMATION
3	24/11/22	ISSUE FOR INFORMATION
2	25/07/22	ISSUE FOR INFORMATION
1	30/05/22	ISSUE FOR INFORMATION
0	18/10/21	PRELIMINARY ISSUE



CONSULTANTS

**SITE IMAGE**

Landscape Architects  
Level 1, 3-5 Baptist Street  
Redfern NSW 2016  
Australia  
Tel: (61 2) 8332 5800  
Fax: (61 2) 9898 2877  
www.sterimage.com.au

CLIENT

**Health**  
Western Sydney  
Local Health District

**Health**  
Infrastructure

**Jacobs**

Level 7, 177 Pacific Highway,  
North Sydney, NSW, 2060  
Tel: +61 2 9528 2100  
Fax: +61 2 9528 2510  
Web: jacobcs.com

PROJECT  
**CUMBERLAND WEST  
MENTAL HEALTH  
SERVICES RELOCATION**

PROJECT NO.  
**SS20-4579**

DRAWING TITLE  
**LANDSCAPE PLAN  
LEVEL 3**

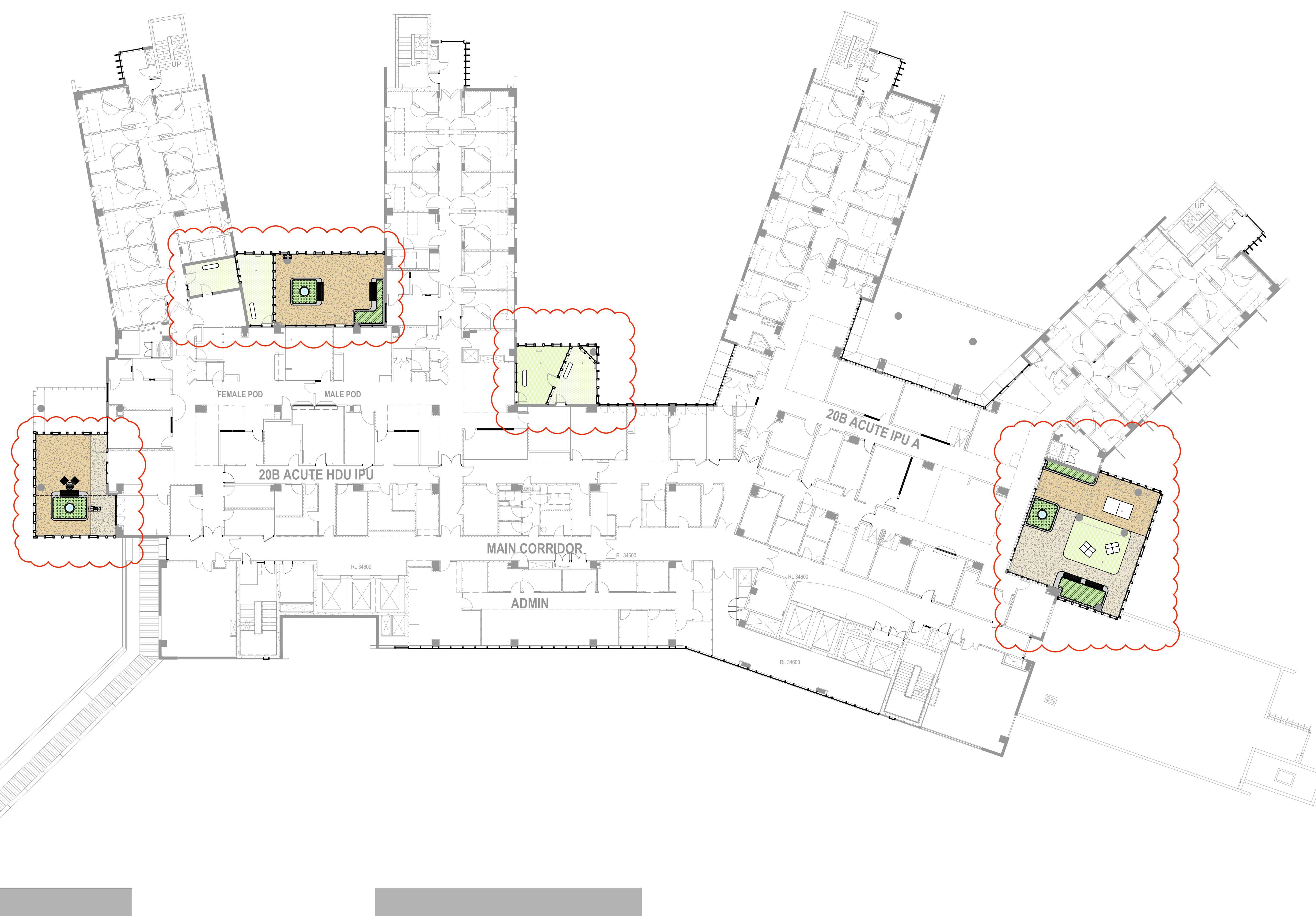
STATUS	<b>SSDA</b>
DRAWN	RG
DESIGNED	NM
CHECKED	JD
APPROVED	NM

SCALE @ B1  
**1 : 200**

DRAWING NO.  
**IMHC-LS-DG-0130**

REVISION  
**7**





- Extent of Works
- Proposed Trees
- Proposed Shrubs and Accents
- Proposed Grasses and Groundcovers
- Coloured Concrete Paving
- Coloured Concrete Paving
- Artificial Turf
- Bench Seating
- Raised Planter
- Free Standing Fixed Seating
- Tamper Proof Bench Seat
- Raised Garden Beds with Frangible/Grafter Trees and Seating Surround
- Water Feature

NOTES

1. DO NOT SCALE DRAWINGS. WRITTEN DIMENSIONS GOVERN.  
2. ALL DIMENSIONS ARE IN MILLIMETRES UNLESS NOTED OTHERWISE.  
3. ALL DIMENSIONS SHALL BE VERIFIED ON SITE BEFORE PROCEEDING WITH THE WORK. JACOBS SHALL BE NOTIFIED IN WRITING OF ANY DISCREPANCIES.  
4. THIS DRAWING MUST BE READ IN CONJUNCTION WITH ALL RELEVANT CONTRACTS, SPECIFICATIONS, REPORTS AND DRAWINGS.  
5. ALL DRAWINGS TO BE PRINTED IN COLOUR. DO NOT PHOTOCOPIY - PRINT ORIGINAL FROM ELECTRONIC FILE FOR HARD COPY.  
6. VARIATIONS TO WORK SHOWN MUST BE BROUGHT TO THE PRINCIPALS ATTENTION AND APPROVED IN WRITING BEFORE PROCEEDING.  
7. THIS DRAWING IS COPYRIGHT AND THE PROPERTY OF THE PRINCIPAL AND MUST NOT BE RETAINED, COPIED OR USED WITHOUT THE PERMISSION OF THE AUTHOR.  
THIS DRAWING IS AN UNCONTROLLED COPY UNLESS NOTED OTHERWISE.

REV	DATE	AMENDMENT
7	20/11/25	SSDA MODIFICATION
6	21/11/24	SSDA MODIFICATION
5	14/02/23	SCALE BAR ADDED
4	28/10/22	ISSUE FOR INFORMATION
3	24/11/22	ISSUE FOR INFORMATION
2	22/07/22	ISSUE FOR INFORMATION
1	30/05/22	ISSUE FOR INFORMATION
0	18/10/21	PRELIMINARY ISSUE

KEY PLAN

CONSULTANTS

**SITE IMAGE**

CLIENT

**NSW GOVERNMENT** | **Health Western Sydney Local Health District**

**NSW GOVERNMENT** | **Health Infrastructure**

**Jacobs**

Level 7, 177 Pacific Highway,  
North Sydney, NSW, 2060  
Tel: +61 2 9528 2100  
Fax: +61 2 9528 2510  
Web: jacobcs.com

PROJECT

**CUMBERLAND WEST MENTAL HEALTH SERVICES RELOCATION**

PROJECT NO.

**SS20-4579**

DRAWING TITLE

**LANDSCAPE PLAN LEVEL 4**

STATUS

**SSDA**

DRAWN	DESIGNED
RG	NM

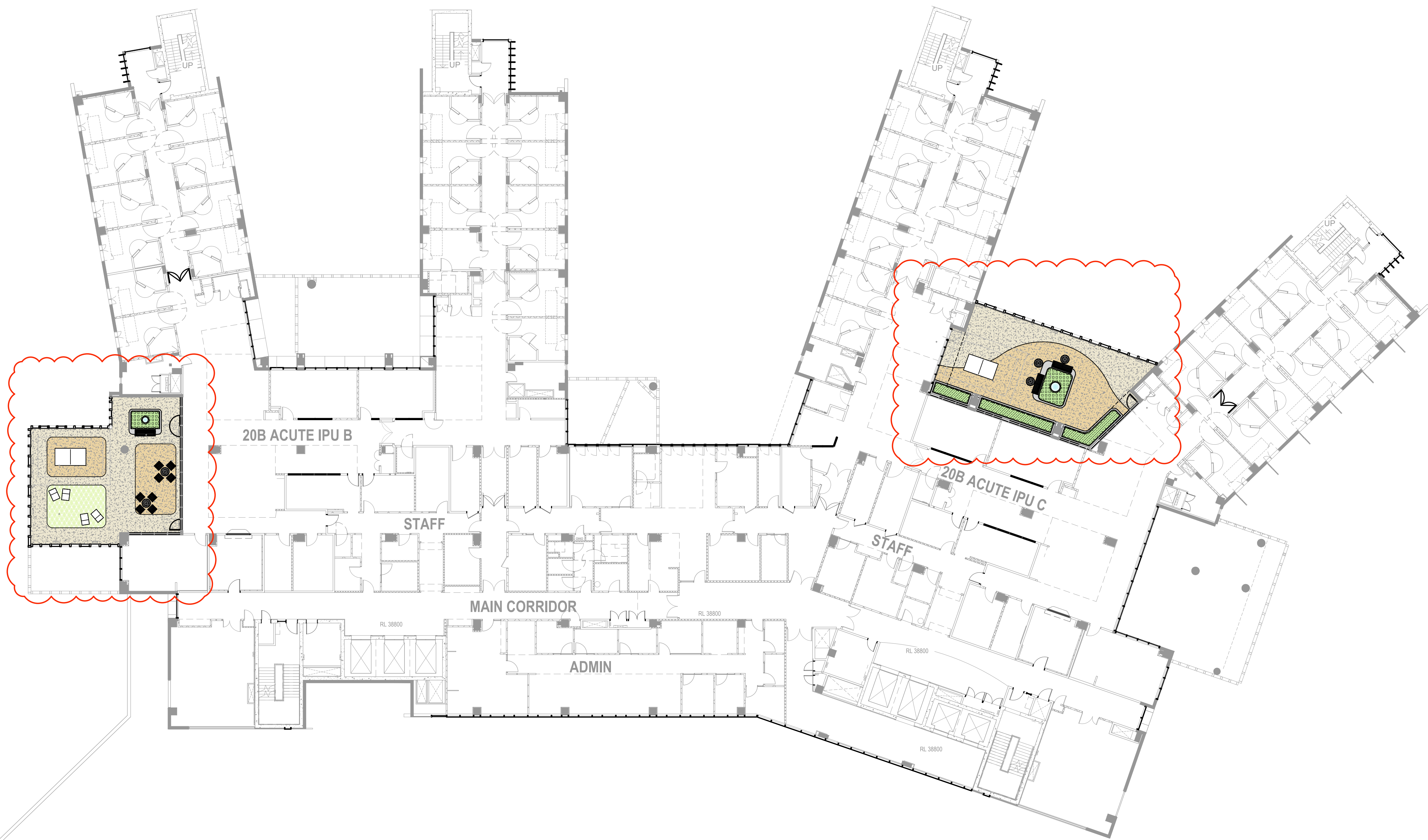
CHECKED	APPROVED
JD	NM

SCALE @ B1

**1 : 200**

DRAWING NO.	REVISION
<b>IMHC-LS-DG-0140</b>	<b>7</b>



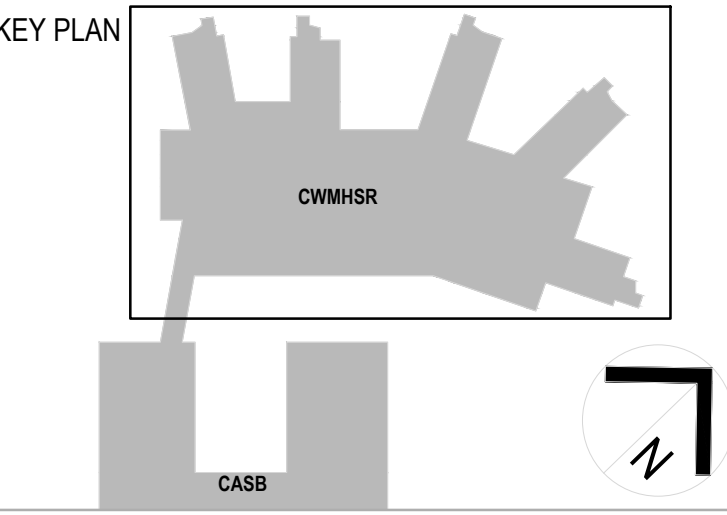


- Extent of Works
- Proposed Trees
- Proposed Shrubs and Accents
- Proposed Grasses and Groundcovers
- Coloured Concrete Paving
- Coloured Concrete Paving
- Artificial Turf
- Bench Seating
- Raised Planter
- Free Standing Fixed Seating
- Tamper Proof Bench Seat
- Raised Garden Beds with Frangible/Grafter Trees and Seating Surround
- Water Feature

NOTES

1. DO NOT SCALE DRAWINGS. WRITTEN DIMENSIONS GOVERN.
2. ALL DIMENSIONS ARE IN MILLIMETRES UNLESS NOTED OTHERWISE.
3. ALL DIMENSIONS SHALL BE VERIFIED ON SITE BEFORE PROCEEDING WITH THE WORK. JACOBS SHALL BE NOTIFIED IN WRITING OF ANY DISCREPANCIES.
4. THIS DRAWING MUST BE READ IN CONJUNCTION WITH ALL RELEVANT CONTRACTS, SPECIFICATIONS, REPORTS AND DRAWINGS.
5. ALL DRAWINGS TO BE PRINTED IN COLOUR. DO NOT PHOTOCOPIY - PRINT ORIGINAL FROM ELECTRONIC FILE FOR HARD COPY.
6. VARIATIONS TO WORK SHOWN MUST BE BROUGHT TO THE PRINCIPALS ATTENTION AND APPROVED IN WRITING BEFORE PROCEEDING.
7. THIS DRAWING IS COPYRIGHT AND THE PROPERTY OF THE PRINCIPAL AND MUST NOT BE RETAINED, COPIED OR USED WITHOUT THE PERMISSION OF THE AUTHOR.
- THIS DRAWING IS AN UNCONTROLLED COPY UNLESS NOTED OTHERWISE.

REV	DATE	AMENDMENT
6	20/11/25	SSDA MODIFICATION
5	14/02/23	SCALE BAR ADDED
4	28/10/22	ISSUE FOR INFORMATION
3	24/11/22	ISSUE FOR INFORMATION
2	22/07/22	ISSUE FOR INFORMATION
1	30/05/22	ISSUE FOR INFORMATION
0	18/10/21	PRELIMINARY ISSUE



CONSULTANTS

SITE IMAGE

Landscape Architects  
Level 1, 3-5 Baptist Street  
Redfern NSW 2016  
Australia

Tel: (61 2) 8332 5600  
Fax: (61 2) 9698 2877  
www.sterimage.com.au

CLIENT

NSW GOVERNMENT Health Western Sydney Local Health District

NSW GOVERNMENT Health Infrastructure

Jacobs

Level 7, 177 Pacific Highway,  
North Sydney, NSW, 2060  
Tel: +61 2 9528 2100  
Fax: +61 2 9528 2510  
Web: jacobcs.com

PROJECT

CUMBERLAND WEST  
MENTAL HEALTH  
SERVICES RELOCATION

PROJECT NO.  
SS20-4579

DRAWING TITLE

LANDSCAPE PLAN  
LEVEL 5

STATUS

SSDA

DRAWN	DESIGNED
RG	NM

CHECKED	APPROVED
JD	NM

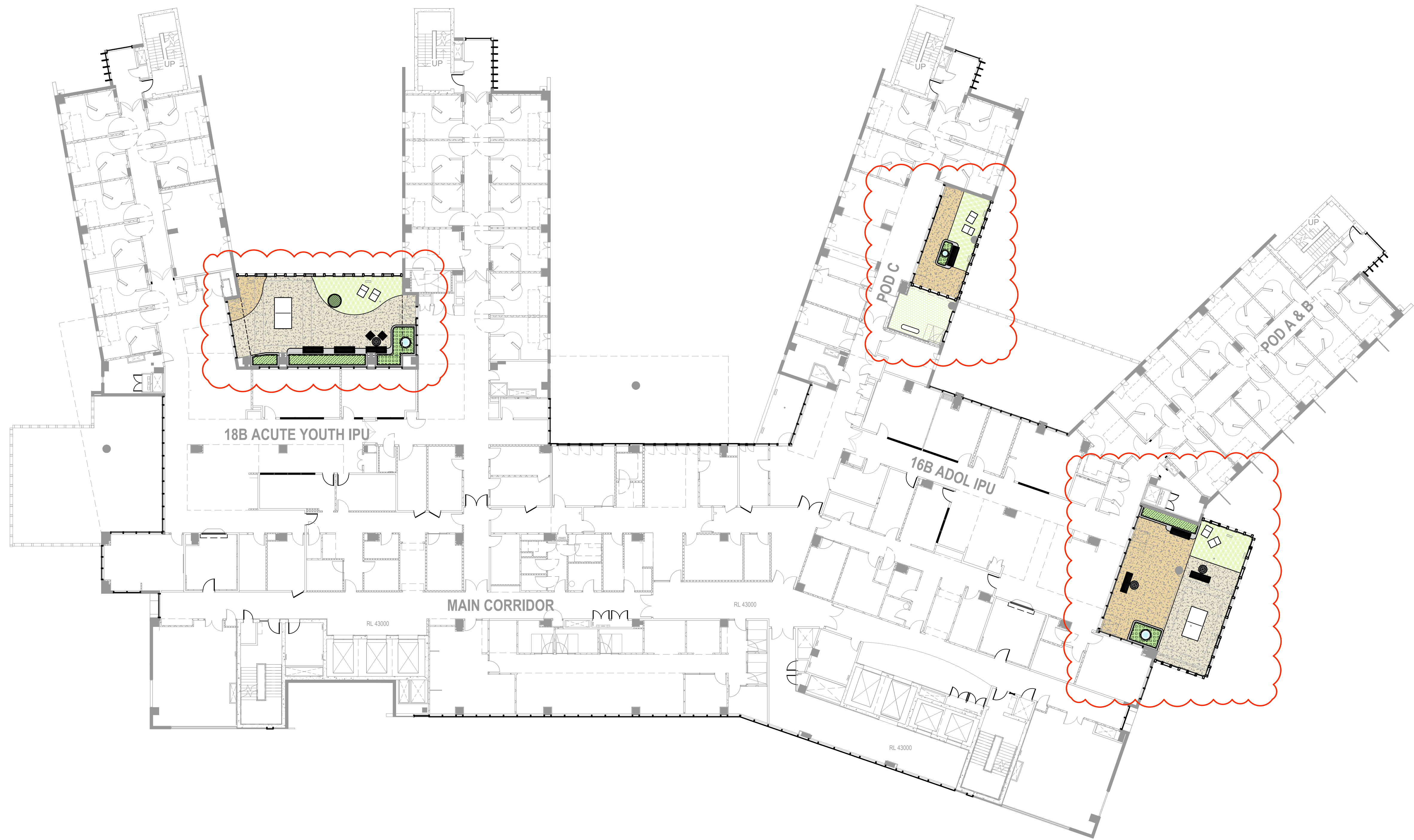
SCALE @ B1

1 : 200

0 1 2 4 6 10m

DRAWING NO.	REVISION
IMHC-LS-DG-0150	6





- Extent of Works
- Proposed Trees
- Proposed Shrubs and Accents
- Proposed Grasses and Groundcovers
- Coloured Concrete Paving
- Coloured Concrete Paving
- Artificial Turf
- Bench Seating
- Raised Planter
- Free Standing Fixed Seating
- Tamper Proof Bench Seat
- Raised Garden Beds with Frangible/Grafter Trees and Seating Surround
- Water Feature

NOTES

1. DO NOT SCALE DRAWINGS. WRITTEN DIMENSIONS GOVERN.

2. ALL DIMENSIONS ARE IN MILLIMETRES UNLESS NOTED OTHERWISE.

3. ALL DIMENSIONS SHALL BE VERIFIED ON SITE BEFORE PROCEEDING WITH THE WORK. JACOBS SHALL BE NOTIFIED IN WRITING OF ANY DISCREPANCIES.

4. THIS DRAWING MUST BE READ IN CONJUNCTION WITH ALL RELEVANT CONTRACTS, SPECIFICATIONS, REPORTS AND DRAWINGS.

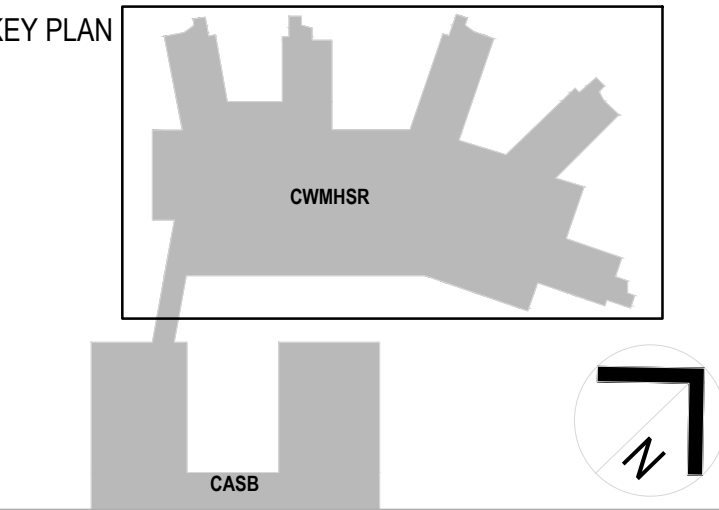
5. ALL DRAWINGS TO BE PRINTED IN COLOUR. DO NOT PHOTOCOPIY - PRINT ORIGINAL FROM ELECTRONIC FILE FOR HARD COPY.

6. VARIATIONS TO WORK SHOWN MUST BE BROUGHT TO THE PRINCIPALS ATTENTION AND APPROVED IN WRITING BEFORE PROCEEDING.

7. THIS DRAWING IS COPYRIGHT AND THE PROPERTY OF THE PRINCIPAL AND MUST NOT BE REPRODUCED, COPIED OR USED WITHOUT THE PERMISSION OF THE AUTHOR.

THIS DRAWING IS AN UNCONTROLLED COPY UNLESS NOTED OTHERWISE.

REV	DATE	AMENDMENT
7	20/11/25	SSDA MODIFICATION
6	21/11/24	SSDA MODIFICATION
5	14/02/23	SCALE BAR ADDED
4	28/10/22	ISSUE FOR INFORMATION
3	24/11/22	ISSUE FOR INFORMATION
2	22/07/22	ISSUE FOR INFORMATION
1	30/05/22	ISSUE FOR INFORMATION
0	18/10/21	PRELIMINARY ISSUE



CONSULTANTS

SITE IMAGE

Landscape Architects  
Level 1, 3-5 Baptist Street  
Redfern NSW 2016  
Australia

Tel: (61 2) 8332 5600  
Fax: (61 2) 9698 2877  
www.sterimage.com.au

CLIENT

**Health**  
Western Sydney  
Local Health District

**Health**  
Infrastructure

**Jacobs**

Level 7, 177 Pacific Highway,  
North Sydney, NSW, 2060  
Tel: +61 2 9628 2100  
Fax: +61 2 9628 2510  
Web: jacobcs.com

PROJECT  
**CUMBERLAND WEST  
MENTAL HEALTH  
SERVICES RELOCATION**

PROJECT NO.  
**SS20-4579**

DRAWING TITLE  
**LANDSCAPE PLAN  
LEVEL 6**

STATUS  
**SSDA**

DRAWN  
**RG**

DESIGNED  
**NM**

CHECKED  
**JD**

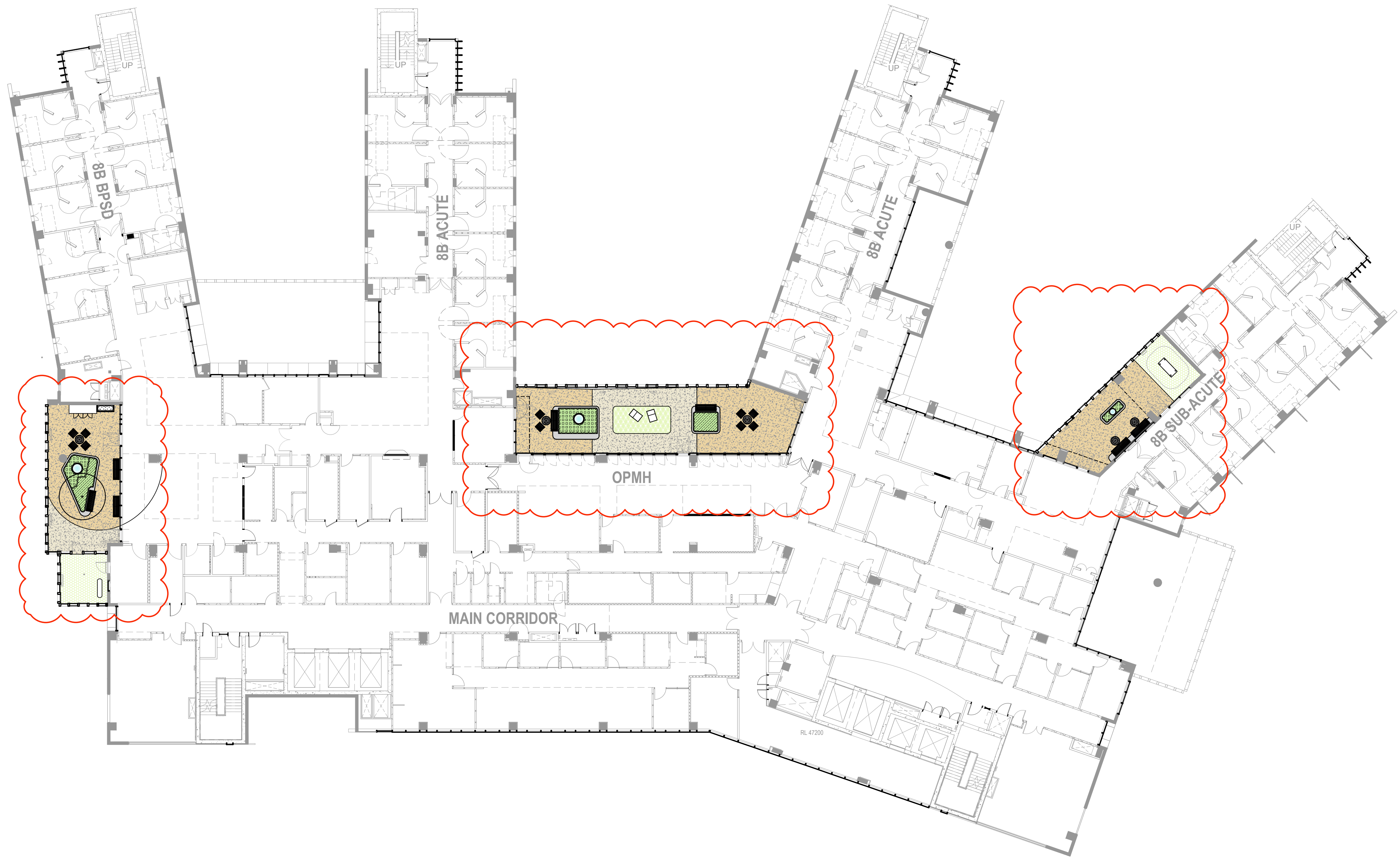
APPROVED  
**NM**

SCALE @ B1  
**1 : 200**

DRAWING NO.  
**IMHC-LS-DG-0160**

REVISION  
**7**





- Extent of Works
- Proposed Trees
- Proposed Shrubs and Accents
- Proposed Grasses and Groundcovers
- Coloured Concrete Paving
- Coloured Concrete Paving
- Artificial Turf
- Bench Seating
- Raised Planter
- Free Standing Fixed Seating
- Tamper Proof Bench Seat
- Raised Garden Beds with Frangible/Grafter Trees and Seating Surround
- Water Feature

NOTES

1. DO NOT SCALE DRAWINGS. WRITTEN DIMENSIONS GOVERN.  
2. ALL DIMENSIONS ARE IN MILLIMETRES UNLESS NOTED OTHERWISE.  
3. ALL DIMENSIONS SHALL BE VERIFIED ON SITE BEFORE PROCEEDING WITH THE WORK. JACOBS SHALL BE NOTIFIED IN WRITING OF ANY DISCREPANCIES.  
4. THIS DRAWING MUST BE READ IN CONJUNCTION WITH ALL RELEVANT CONTRACTS, SPECIFICATIONS, REPORTS AND DRAWINGS.  
5. ALL DRAWINGS TO BE PRINTED IN COLOUR. DO NOT PHOTOCOPIY - PRINT ORIGINAL FROM ELECTRONIC FILE FOR HARD COPY.  
6. VARIATIONS TO WORK SHOWN MUST BE BROUGHT TO THE PRINCIPALS ATTENTION AND APPROVED IN WRITING BEFORE PROCEEDING.  
7. THIS DRAWING IS COPYRIGHT AND THE PROPERTY OF THE PRINCIPAL AND MUST NOT BE RETAINED, COPIED OR USED WITHOUT THE PERMISSION OF THE AUTHOR.  
THIS DRAWING IS AN UNCONTROLLED COPY UNLESS NOTED OTHERWISE.

REV	DATE	AMENDMENT
7	20/11/25	SSDA MODIFICATION
6	21/11/24	SSDA MODIFICATION
5	14/02/23	SCALE BAR ADDED
4	28/11/22	ISSUE FOR INFORMATION
3	24/11/22	ISSUE FOR INFORMATION
2	22/07/22	ISSUE FOR INFORMATION
1	30/05/22	ISSUE FOR INFORMATION
0	18/10/21	PRELIMINARY ISSUE

KEY PLAN

CONSULTANTS

**SITE IMAGE**

CLIENT

**Health Western Sydney Local Health District**

**Health Infrastructure**

**Jacobs**

Level 7, 177 Pacific Highway,  
North Sydney, NSW, 2060  
Tel: +61 2 9528 2100  
Fax: +61 2 9528 2510  
Web: jacobson.com

PROJECT

**CUMBERLAND WEST MENTAL HEALTH SERVICES RELOCATION**

PROJECT NO.

**SS20-4579**

DRAWING TITLE

**LANDSCAPE PLAN LEVEL 7**

STATUS

**SSDA**

DRAWN	DESIGNED
RG	NM

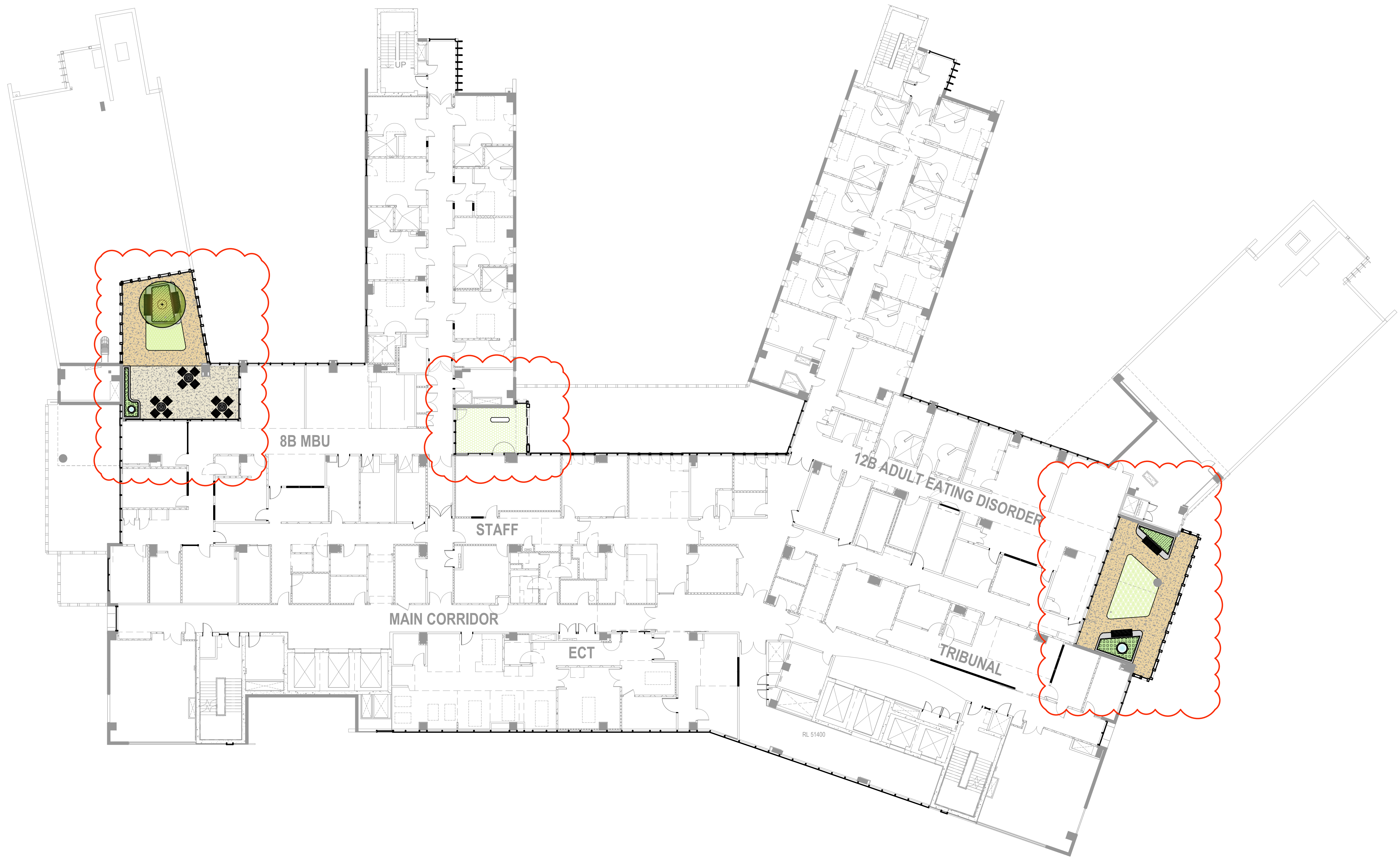
CHECKED	APPROVED
JD	NM

SCALE @ B1

**1 : 200**

DRAWING NO.	REVISION
<b>IMHC-LS-DG-0170</b>	<b>7</b>



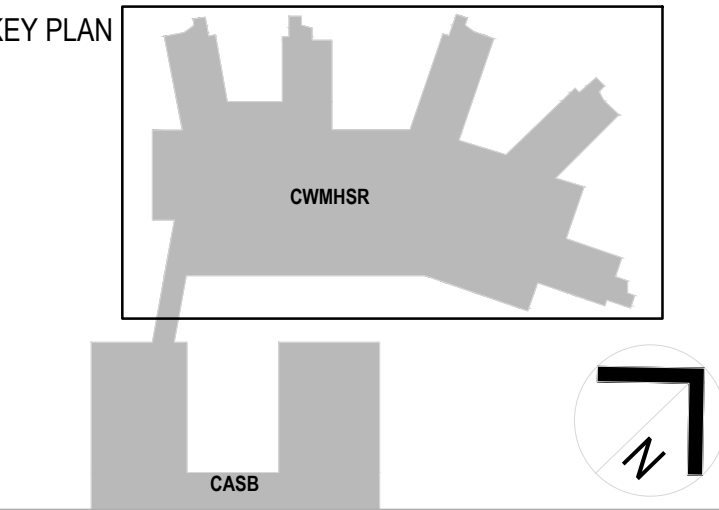


- Extent of Works
- Proposed Trees
- Proposed Shrubs and Accents
- Proposed Grasses and Groundcovers
- Coloured Concrete Paving
- Coloured Concrete Paving
- Artificial Turf
- Bench Seating
- Raised Planter
- Free Standing Fixed Seating
- Tamper Proof Bench Seat
- Raised Garden Beds with Frangible/Grafter Trees and Seating Surround
- Water Feature

NOTES

1. DO NOT SCALE DRAWINGS. WRITTEN DIMENSIONS GOVERN.  
2. ALL DIMENSIONS ARE IN MILLIMETRES UNLESS NOTED OTHERWISE.  
3. ALL DIMENSIONS SHALL BE VERIFIED ON SITE BEFORE PROCEEDING WITH THE WORK. JACOBS SHALL BE NOTIFIED IN WRITING OF ANY DISCREPANCIES.  
4. THIS DRAWING MUST BE READ IN CONJUNCTION WITH ALL RELEVANT CONTRACTS, SPECIFICATIONS, REPORTS AND DRAWINGS.  
5. ALL DRAWINGS TO BE PRINTED IN COLOUR. DO NOT PHOTOCOPIY - PRINT ORIGINAL FROM ELECTRONIC FILE FOR HARD COPY.  
6. VARIATIONS TO WORK SHOWN MUST BE BROUGHT TO THE PRINCIPALS ATTENTION AND APPROVED IN WRITING BEFORE PROCEEDING.  
7. THIS DRAWING IS COPYRIGHT AND THE PROPERTY OF THE PRINCIPAL AND MUST NOT BE RETAINED, COPIED OR USED WITHOUT THE PERMISSION OF THE AUTHOR.  
THIS DRAWING IS AN UNCONTROLLED COPY UNLESS NOTED OTHERWISE.

REV	DATE	AMENDMENT
6	20/11/25	SSDA MODIFICATION
5	14/02/23	SCALE BAR ADDED
4	28/10/22	ISSUE FOR INFORMATION
3	24/11/22	ISSUE FOR INFORMATION
2	22/07/22	ISSUE FOR INFORMATION
1	30/05/22	ISSUE FOR INFORMATION
0	18/10/21	PRELIMINARY ISSUE



CONSULTANTS

SITE IMAGE

Landscape Architects  
Level 1, 3-5 Baptist Street  
Redfern NSW 2016  
Australia

Tel: (61 2) 8332 5600  
Fax: (61 2) 9698 2877  
www.siterimage.com.au

CLIENT

NSW GOVERNMENT Health Western Sydney Local Health District

NSW GOVERNMENT Health Infrastructure

Jacobs

Level 7, 177 Pacific Highway,  
North Sydney, NSW, 2060  
Tel: +61 2 9628 2100  
Fax: +61 2 9628 2510  
Web: jacobson.com

PROJECT

CUMBERLAND WEST  
MENTAL HEALTH  
SERVICES RELOCATION

PROJECT NO.

SS20-4579

DRAWING TITLE

LANDSCAPE PLAN  
LEVEL 8

STATUS

SSDA

DRAWN	DESIGNED
RG	NM
CHECKED	APPROVED
JD	NM

SCALE @ B1

1 : 200

0 1 2 4 6 10m

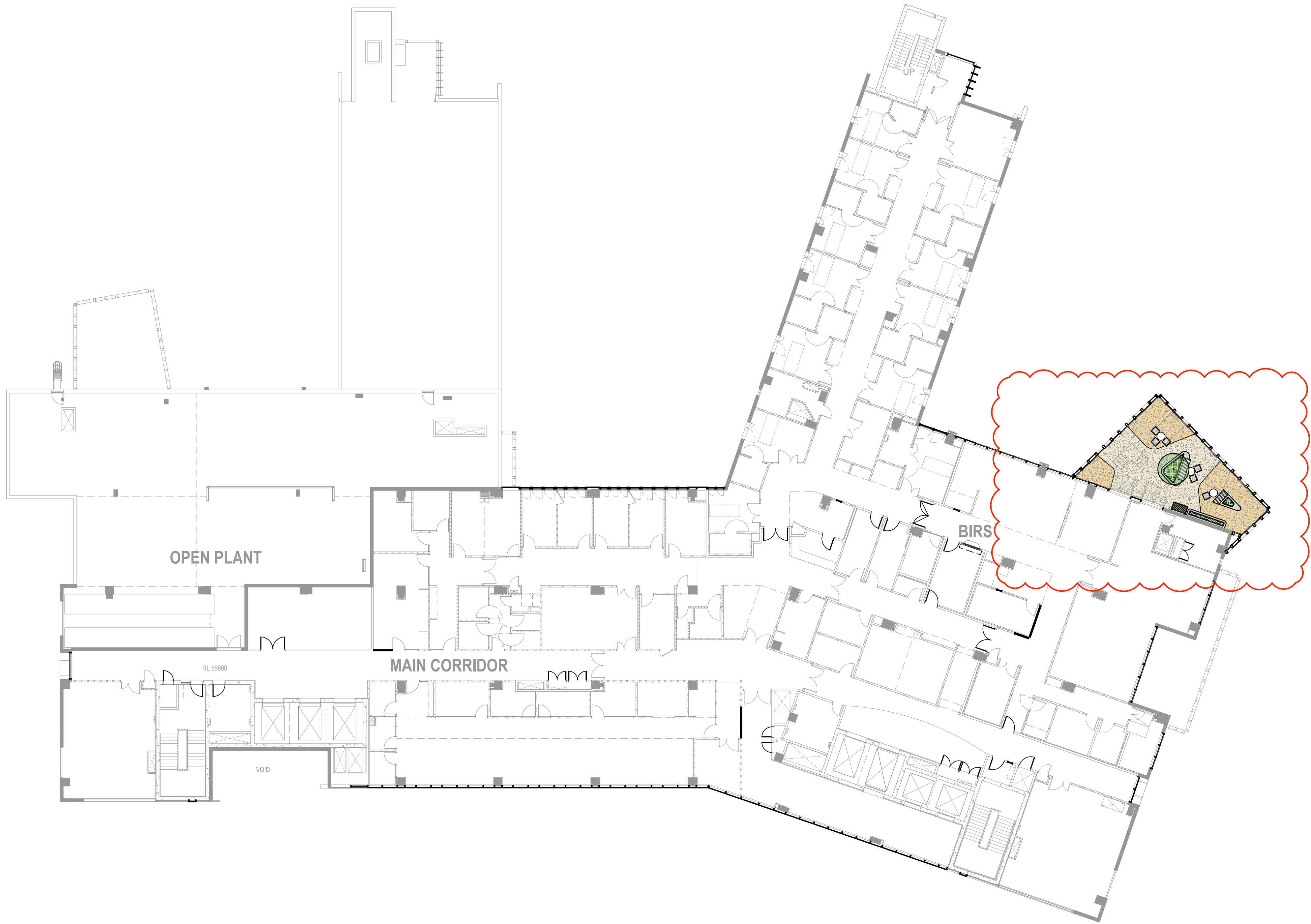
DRAWING NO.


IMHC-LS-DG-0180


REVISION


6




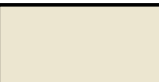


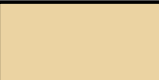
- 


Extent of Works
- 


Proposed Trees
- 


Proposed Shrubs and Accents
- 


Proposed Grasses and Groundcovers
- 

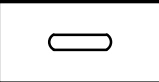
Coloured Concrete Paving
- 

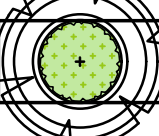
Coloured Concrete Paving
- 

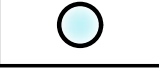
Artificial Turf
- 

Bench Seating
- 

Raised Planter
- 

Free Standing Fixed Seating
- 

Tamper Proof Bench Seat
- 

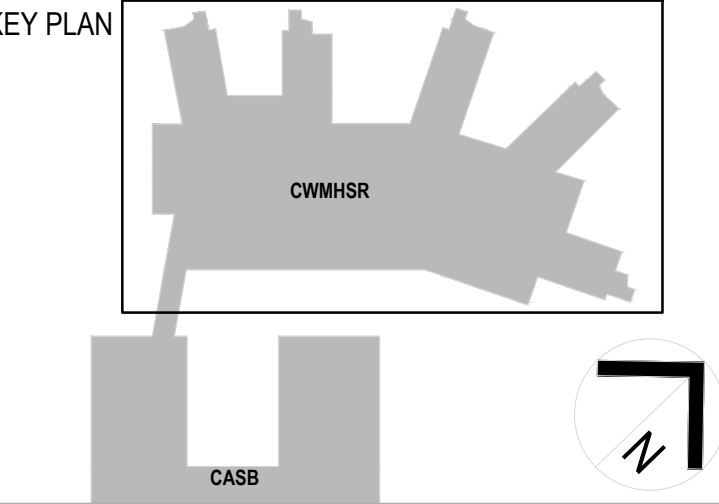
Raised Garden Beds with Frangible/Grafter Trees and Seating Surround
- 

Water Feature

NOTES

1. DO NOT SCALE DRAWINGS. WRITTEN DIMENSIONS GOVERN.  
2. ALL DIMENSIONS ARE IN MILLIMETRES UNLESS NOTED OTHERWISE.  
3. ALL DIMENSIONS SHALL BE VERIFIED ON SITE BEFORE PROCEEDING WITH THE WORK.  
4. THIS DRAWING MUST BE READ IN CONJUNCTION WITH ALL RELEVANT CONTRACTS, SPECIFICATIONS, REPORTS AND DRAWINGS.  
5. ALL DRAWINGS TO BE PRINTED IN COLOUR. DO NOT PHOTOCOPIY - PRINT ORIGINAL FROM ELECTRONIC FILE FOR HARD COPY.  
6. VARIATIONS TO WORK SHOWN MUST BE BROUGHT TO THE PRINCIPALS ATTENTION AND APPROVED IN WRITING BEFORE PROCEEDING.  
7. THIS DRAWING IS COPYRIGHT AND THE PROPERTY OF THE PRINCIPAL AND MUST NOT BE REPRODUCED, COPIED OR USED WITHOUT THE PERMISSION OF THE AUTHOR.  
THIS DRAWING IS AN UNCONTROLLED COPY UNLESS NOTED OTHERWISE.

REV	DATE	AMENDMENT
6	20/11/25	SSDA MODIFICATION
5	14/02/23	SCALE BAR ADDED
4	28/11/22	ISSUE FOR INFORMATION
3	24/11/22	ISSUE FOR INFORMATION
2	22/07/22	ISSUE FOR INFORMATION
1	30/05/22	ISSUE FOR INFORMATION
0	18/10/21	PRELIMINARY ISSUE



CONSULTANTS

SITE IMAGE

Landscape Architects  
Level 1, 3-5 Baptist Street  
Redfern NSW 2016  
Australia  
Tel: (61 2) 8332 5600  
Fax: (61 2) 9698 2877  
www.sterimage.com.au

CLIENT

 **Health**  
Western Sydney  
Local Health District

 **Health**  
Infrastructure

**Jacobs**

Level 7, 177 Pacific Highway,  
North Sydney, NSW, 2060  
Tel: +61 2 9628 2100  
Fax: +61 2 9628 2510  
Web: jacobson.com

PROJECT  
**CUMBERLAND WEST  
MENTAL HEALTH  
SERVICES RELOCATION**

PROJECT NO.  
**SS20-4579**

DRAWING TITLE  
**LANDSCAPE PLAN  
LEVEL 9**

STATUS  
**SSDA**

DRAWN <b>RG</b>	DESIGNED <b>NM</b>
CHECKED <b>JD</b>	APPROVED <b>NM</b>

SCALE @ B1  
**1 : 200**

DRAWING NO.  
**IMHC-LS-DG-0190**

REVISION  
**6**