



Addendum Scoping Report

Date: 1 September 2023

Application Number: SSD-40138508

Prepared by: Goldwind Australia Pty Ltd, on behalf of Baldon Wind Farm Pty Ltd

Document Details

Document Title	Baldon Wind Farm
Document Subtitle	Addendum Scoping Report
Application No.	SSD-40138508
Date	1 September 2023
Version	1.1
Applicant	Baldon Wind Farm Pty Ltd

Document Control History

Version	Revision	Date	Author(s)	Reviewed by:	Comments
Final	1	23/06/2023	M. Boutry	M. Weerasinghe	For Issue
Final	1.1	1/09/2023	M.Boutry	M. Weerasinghe	For Issue – addresses DPE comments

Document Distribution

Recipient	Purpose
Department of Planning and Environment	Addendum Scoping Report to address amendment to project boundary and additional turbines

Table of Contents

1.0 Introduction	4
1.1 Overview	4
1.2 Report Purpose	4
1.3 Project Changes.....	4
1.3.1 Project Boundary Adjustments and Landowner Classification.....	4
1.3.2 Additional Turbine Locations.....	4
1.3.3 Project Applicant Update.....	5
1.3.4 Summary	5
2.0 References.....	5
Appendix A – Updated Figures.....	6
Appendix B – Updated Preliminary Landscape and Visual Assessment	9

1.0 INTRODUCTION

1.1 Overview

Baldon Wind Farm Pty Ltd proposes to construct and operate the Baldon Wind Farm (the Project), a renewable development located between Balranald and Hay, NSW, and within the South West Renewable Energy Zone (SWREZ).

A Scoping Report for the Baldon Wind Farm was prepared (Goldwind, 2022) (the 'Scoping Report') to support an application to the Secretary of the Department of Planning and Environment (DPE) for Secretary's Environmental Assessment Requirements (SEARs) as the Project is a State Significant Development (SSD). SEARs guide the preparation of an Environmental Impact Statement (EIS). SEARs were issued on 5 July 2022 for the Project (SSD-40138508).

1.2 Report Purpose

This Addendum Scoping Report ('Addendum') outlines changes to the Project since the SEARs were issued and should be read in conjunction with the Scoping Report.

The changes relate to boundary adjustments, updated landowner classification, additional turbine locations and updated Project Applicant details. The changes will not amend the environmental impact assessment methodology relating to the EIS and the associated technical assessments, and thus may not require changes to the SEARs.

1.3 Project Changes

1.3.1 Project Boundary Adjustments and Landowner Classification

Minor adjustments have been made to the southwestern Project Boundary to incorporate a neighbouring landowner as an involved landowner (previously presented as a non-involved landowner (R21) within the Scoping Report). The additional allotments incorporated in the Project Boundary are:

- Lot23 DP756595
- Lot30 DP756595
- Lot36 DP756555
- Lot57 DP756555
- Lot58 DP756555
- Lot59 DP756555
- Lot1 DP1271318

The previous Project Area comprised 42,781ha. The additional landholding comprises 3,485ha, which represents an approximate 8% increase in the size of the project area comprising an updated total of 46,266ha. The additional land does not overlap with any other wind development projects.

The changes have been incorporated into the following updated figures from the Scoping Report and are provided at Appendix A:

- Figure 1-3: Updated Preliminary Layout
- Figure 2-1: Updated Project Area: Map of Lot and DP numbers

1.3.2 Additional Turbine Locations

The Project as defined in the Scoping Report included up to approximately 162 wind turbines.

Eighteen (18) additional turbine locations and associated infrastructure (e.g. roads and cables) are proposed within the updated Project Boundary, located on both the additional allotments (13) and the original allotments (5). As a result, the proposed Project will include up to 180 turbine locations. The additional turbines are labelled as turbines 163 – 180 in the updated preliminary layout (Appendix A, Figure 1-3).

The Preliminary Landscape and Visual Assessment has been updated to address the additional turbines and is provided at Appendix B. The Landscape and Visual Assessment for the EIS will further address the full project layout as per the SEARs.

1.3.3 Project Applicant Update

The Project Applicant for the Baldon Wind Farm has been updated to be Baldon Wind Farm Pty Ltd, a Special Purpose Vehicle for the project. Goldwind Australia Pty Ltd is responsible for developing the project on behalf of Baldon Wind Farm Pty Ltd.

1.3.4 Summary

This Addendum will not amend the environmental impact assessment methodology relating to the EIS and the associated technical assessments. Minor administrative changes are recommended to the SEARs as follows:

Application Number	SSD-40138508
Project Name	Baldon Wind Farm including: <ul style="list-style-type: none">the construction, operation and decommissioning of a wind farm with an estimated capacity up to 1,000 megawatts (MW), up to 162 180 turbines and a maximum height of 300 m (to blade tip);a battery with a nominal storage of 200 MW / 800 MWh; andancillary infrastructure including site offices, internal roads, underground and overhead cabling, substations, transmission lines and grid connection to the transmission network.
Location	Baldon Road, approximately 44 km east of Balranald in the Murray River and Hay Local Government Areas
Applicant	Goldwind Australia Pty Ltd Baldon Wind Farm Pty Ltd

The EIS will be prepared in accordance with the SEARs dated 4 July 2022 (SSD-40138508) unless otherwise directed by the Department. The changes described in this Addendum will be incorporated into the Project referral under the *Environmental Biodiversity and Conservation Act 1999* (Cth).

2.0 REFERENCES

GBD Landscape Architecture (2023). Baldon Wind Farm, Preliminary Landscape and Visual Assessment – amended layout, v2.

Goldwind (2022). Baldon Wind farm Scoping Report. Prepared by Goldwind Australia Pty Ltd. 27 May 2022

APPENDIX A – UPDATED FIGURES

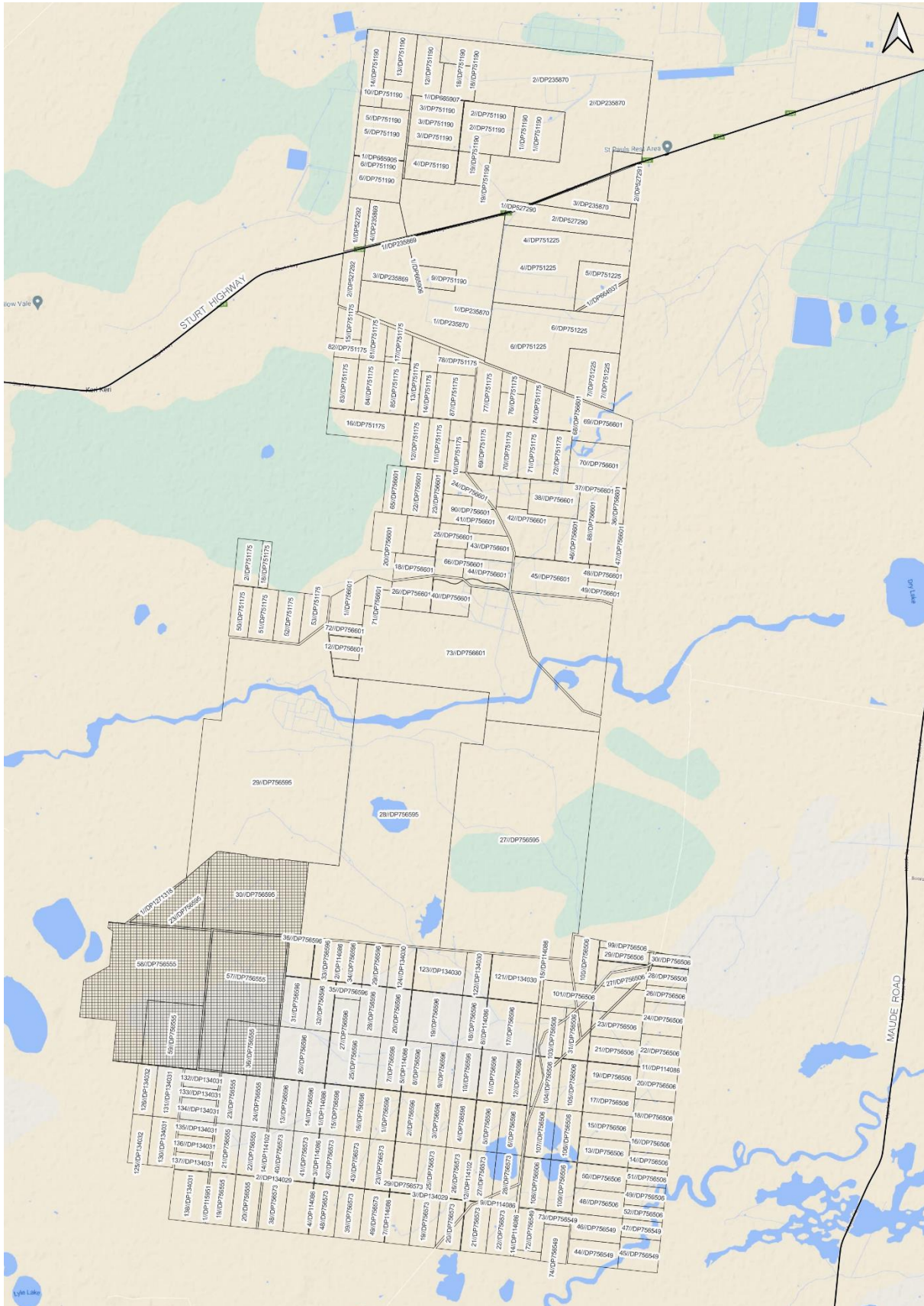


Figure 2-1. Updated Project Area: Map of Lots and DP numbers. Hatched area shows the additional land titles.

APPENDIX B – UPDATED PRELIMINARY LANDSCAPE AND VISUAL ASSESSMENT

Medard Boutry, Development Manager / Environmental Advisor
Goldwind Australia Pty Ltd
Level 25, Tower 1, International Towers Sydney
100 Barangaroo Ave,
Barangaroo NSW 2000

Email: medardboutry@goldwindaustralia.com

11 August 2023

Dear Medard,

Baldon Wind Farm Preliminary Landscape and Visual Impact Assessment – amended layout

Thank you for your email 8th July 2022 to confirm that dwelling/property R21 identified in the original Baldon Wind Farm Preliminary Landscape and Visual Impact Assessment March 2022 (Preliminary LVIA), is now involved with the project and will host up to 18 wind turbines within the southwest portion of the project site.

The additional 18 wind turbines are identified as numbers 163 to 180 inclusively in the attached Multiple Wind Turbine Tool diagrams prepared for dwellings R20a and R24. Dwellings R20a and R24 are the only dwellings likely to be affected by the amended layout and additional wind turbines.

We have reviewed the additional 18 wind turbine locations and confirm the following for your information.

Regarding visual magnitude, the closest wind turbine to dwelling R20a (also representing R20b), and R24 would remain as determined in the original Preliminary LVIA, which identified dwelling R20a at 6.4km to wind turbine T88, and dwelling R24 at 5km to wind turbine T138.

Dwellings R20a and R24, would have a small number of additional wind turbines within 8km of the dwellings. Dwelling R20a would have an additional 5 wind turbines (T163, T165, T166, T173 and T174) within 8km of the dwelling, located between the blue line and the 8km cumulative threshold. Dwelling R24 would have an additional 3 wind turbine (T171, T174 and T175) within 8km of the dwelling, located between the blue line and the 8km cumulative threshold.

Amended wind turbines within 8km of each dwelling would result in one additional 60 degree sector to the single 60 degree sector determined for each dwelling in the original Preliminary LVIA.

We have prepared amended Multiple Wind Turbine Tool diagrams for dwellings R20a and R24 to illustrate the location of the additional 18 wind turbines, threshold distances from each dwelling (at black line, blue line and 8km threshold) and 60 degree sector.

We confirm that the additional 18 wind turbines would result in no material change to the outcomes noted in the original Preliminary LVIA.

Kind regards,

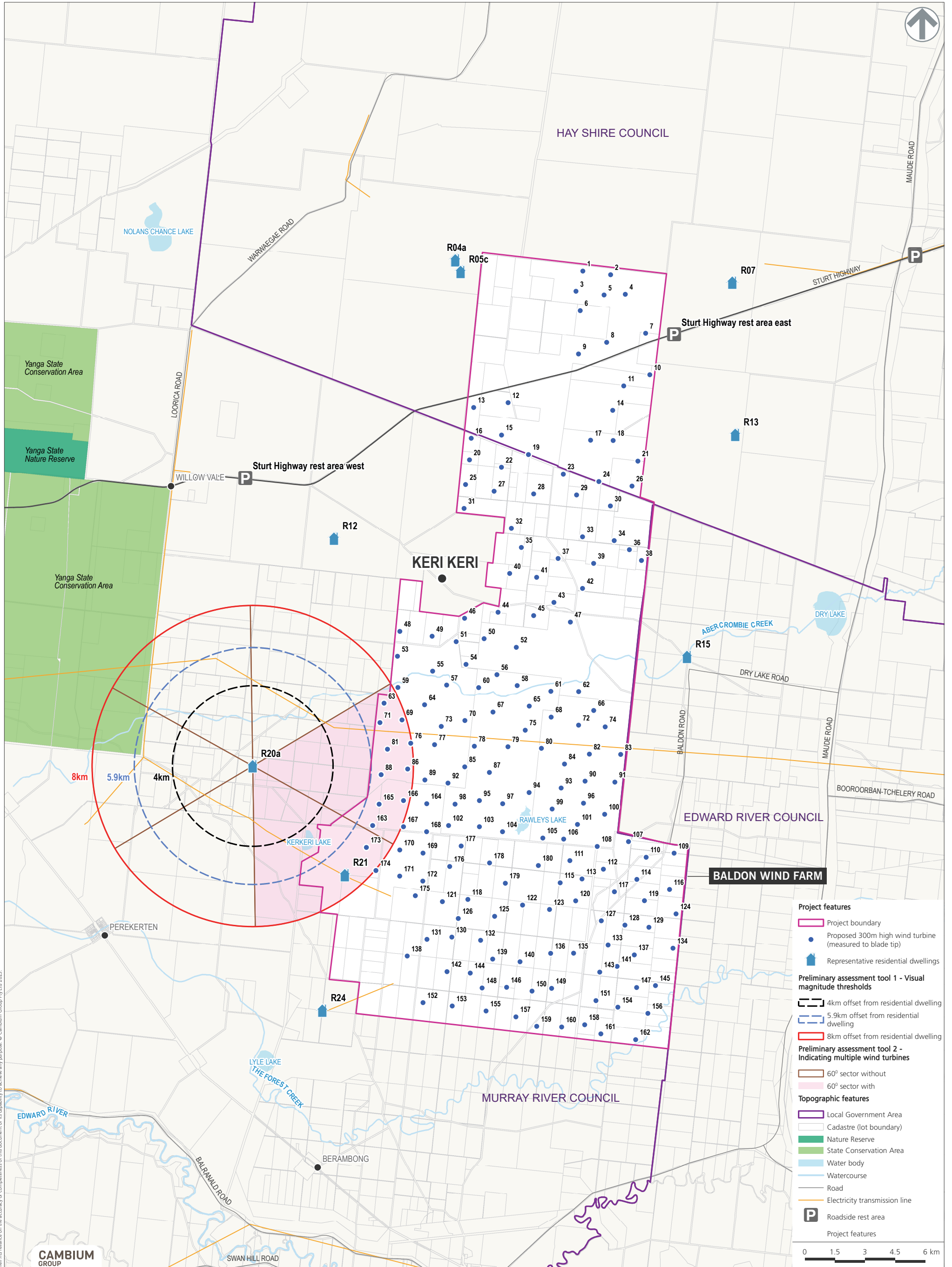


Green Bean Design Pty Ltd

Registered Landscape Architect, AILA

Figure 1
 Representative location dwelling R20a - Multiple wind turbine tool

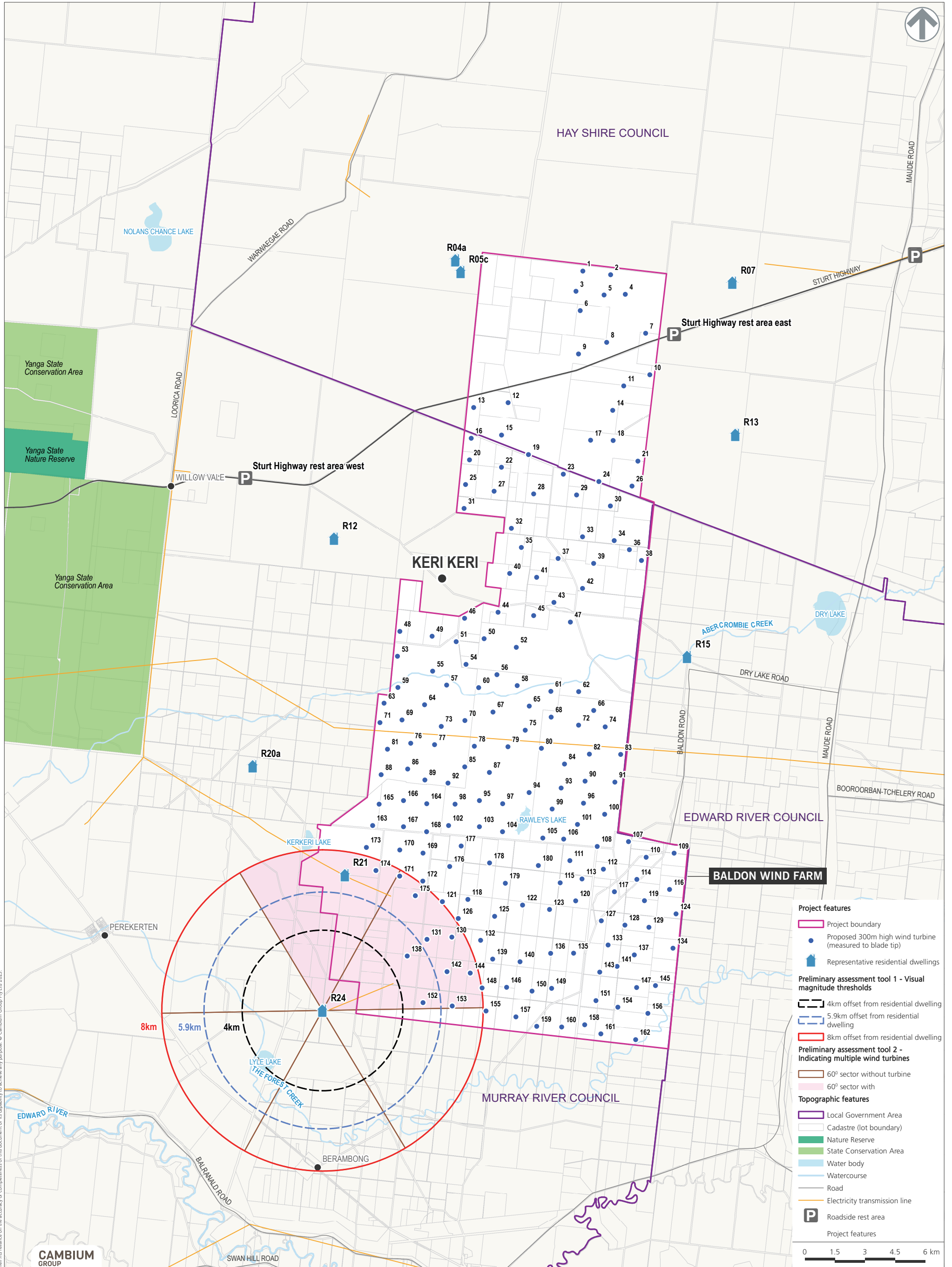
BALDON WIND FARM | AMENDED PRELIMINARY LANDSCAPE AND VISUAL IMPACT ASSESSMENT



DISCLAIMER
 Cambium Group Pty Ltd disclaims all liability for all claims, expenses, losses, damages, and costs any person may incur as a result of reliance on the accuracy or completeness of this document or its contents for any purpose. © Cambium Group Pty Ltd 2023.

Figure 2
 Representative location dwelling R24 - Multiple wind turbine tool

BALDON WIND FARM | AMENDED PRELIMINARY LANDSCAPE AND VISUAL IMPACT ASSESSMENT



DISCLAIMER
 Cambium Group Pty Ltd disclaims all liability for all claims, expenses, losses, damages, and costs any person may incur as a result of their reliance on the accuracy or completeness of this document or its content. © Cambium Group Pty Ltd 2023.