

HEALTH INFRASTRUCTURE

# Shoalhaven Hospital Redevelopment Project

State Significant Development Application Engagement Report

15/06/2022

Version 1



# Contents

Contents.....	2
Executive Summary .....	3
Secretary's Environmental Assessment Requirements.....	3
Background .....	5
Purpose.....	5
Project description .....	6
Scope of works .....	7
The Site.....	8
Project milestones.....	8
Engagement.....	9
Objectives .....	9
Engagement Approach .....	10
Engagement undertaken .....	12
Internal stakeholder engagement .....	12
External engagement.....	13
Key project issues and outcomes .....	16
Next steps .....	20

## Executive Summary

Health Infrastructure NSW (HI) is the applicant for the proposed Shoalhaven District Memorial Hospital Redevelopment (Shoalhaven Hospital) at Scenic Drive, Nowra in the City of Shoalhaven Local Government Area (LGA).

The proposal is State Significant Development (SSD) for the purposes of the *Environmental Planning and Assessment Act 1979* (EP&A Act) and section 14(a) of Schedule 1 of the *State Environmental Planning Policy (Planning Systems) 2021* (Planning Systems SEPP) as it involves development for the purposes of a hospital with a capital investment value in excess of \$30 million.

The Shoalhaven Hospital Redevelopment seeks to deliver significantly enhanced acute services, as well as a new campus main entry and drop-off area.

The proposed Acute Services Building will be located south and east of the hospital's existing cluster of buildings and will address Shoalhaven Street to the hospital's east. The development is proposed to be located on the site of the existing Shoalhaven Community Preschool (which will be separately relocated) and part of the former Nowra Park.

The proposed Shoalhaven Hospital Redevelopment under this SSD relates primarily to the development of a new hospital building and its ancillary works. The scope includes a new seven-level building of about 31,000m<sup>2</sup> GFA, with rooftop plant and helipad, generally accommodating the following:

Level	Detail
Level 00	Back of House (BOH), loading dock, kitchen, plant, pharmacy, staff amenities, mortuary and plant
Level 01	Front of House (FOH), emergency department (ED), medical imaging and cafe
Level 02	Operating suites and endoscopy, central sterile supply department (CSSD) and linkway to Block B
Level 03	Coronary care unit (CCU), close observation unit (COI), intensive care unit (ICU), cultural centre and plant
Level 04	In-patient unit (IPU), mental health and plant
Level 05	IPU
Level 06	IPU
Level 07	Rooftop plant
Level 08	Helipad

This generally results in 279 new beds and treatment spaces across a range of departments, eight new operating theatres, and two new endoscopy theatres. The works include a new ambulance entry from Shoalhaven Street, new public and servicing accessway off North Street, and separate loading dock entry and mortuary parking off Shoalhaven Street.

A range of infrastructure and civil engineering works are proposed as well as demolition of existing structures within the footprint of the new building and/or on the existing hospital campus where a new linkway connection is proposed. Earthworks will be necessitated within the building's footprint and immediate environs.

Subdivision of the balance of Lot 104 (the former Nowra Park) remaining and consolidation of the existing pre-school lot into the hospital lot is also proposed.

A number of selected trees will require removal. Other significant trees will be retained and protected. Replacement planting at a minimum rate of 1:1 is proposed.

## Secretary's Environmental Assessment Requirements

This Engagement Report supports a State Significant Development Application (SSDA) for the proposed Shoalhaven Hospital Redevelopment (reference SSD-35999468) at land identified as 2 Scenic Drive, Nowra, NSW. The applicant is Johnstaff, on behalf of NSW Health Infrastructure.

The proposal is for the detailed design and construction of the redevelopment of the Shoalhaven Hospital. The redevelopment seeks to provide additional services, including a new Emergency Department and Emergency short-stay unit, Intensive Care Unit and operating theatres, among others.

This report addresses the requirement for community and stakeholder engagement specified in the Department of Planning and Environment's Secretary's Environmental Assessment Requirements (SEARs) for the project, issued on 23 February 2022. It follows the principles set out in the *Undertaking Engagement Guidelines for State Significant Projects*.

SEARs	Section or Report
Detail engagement undertaken and demonstrate how it was consistent with the <i>Undertaking Engagement Guidelines for State Significant Projects</i> . Detail how issues raised, and feedback provided have been considered and responded to in the project. In particular, applicants must consult with:	This report
The relevant Department assessment team	Environmental Impact Statement (EIS)
Any relevant local councils	EIS
Any relevant agencies	EIS and specific technical reports
The community	This report



**Shoalhaven Hospital staff pop-up stall**



# Background

## Purpose

This Engagement Report, developed specifically for the Shoalhaven Hospital Redevelopment project, outlines the engagement activity that has been undertaken during the preparation of the State Significant Development Application (SSDA) to meet the Secretary's Environmental Assessment Requirements (SEARs). The Shoalhaven Hospital Redevelopment project is considered a State Significant Development (SSD) and recognises the need for meaningful, proportionate and tailored engagement.

The aim of this report is to:

- Demonstrate a clearly planned and timely approach to engagement
- Outline the community and stakeholder engagement undertaken that has informed the development of the proposal and contributed to better outcomes
- Report on how engagement has shaped the project under assessment.

Consistent, transparent and proactive communications and engagement are essential to delivering a successful project outcome. Engaging with the right people at the right time informs project planning, design and delivery, as well as links the community, stakeholders and consumers at all levels of the health system to the project

The Shoalhaven Hospital Redevelopment project engagement has helped the project team understand and identify potential issues and develop mitigation measures to address them.



*Artists' impression of the new hospital*

## Project description

The NSW Government has committed \$438 million for the redevelopment of Shoalhaven Hospital, which will strengthen its position as the health hub for the region, providing the majority of emergency, critical care, acute, sub-acute and non-admitted services locally, reducing the need to transfer patients to Wollongong and Sydney.

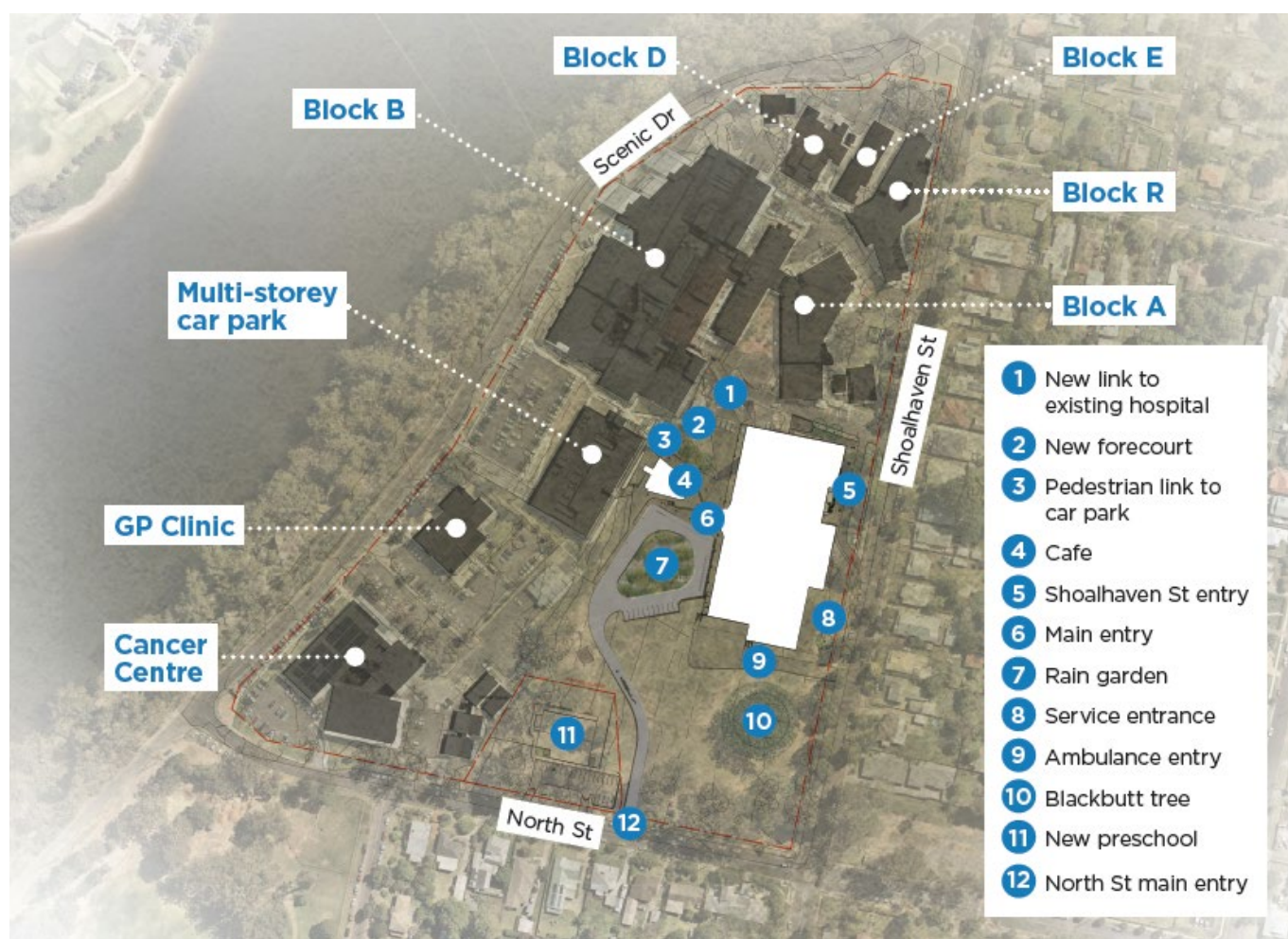
The redeveloped Shoalhaven Hospital will deliver state-of-the-art medical care for residents, including a new emergency department, medical wards, dedicated Mental Health ward, cardiology ward and diagnostic suite and double the number of operating theatres and expanded surgical services. A new building for acute care services will be directly connected to the existing hospital, which will undergo varying levels of refurbishment.

These new and expanded services will mean more capacity for emergency and elective surgery and access to more specialised staff, equipment and technology. Health services in the region will be more self-sufficient, giving residents access to more services locally so they don't have to leave the region for treatment.

The Hospital will continue to be linked with Wollongong Hospital and the new Shellharbour Hospital as part of a District-wide network.

The new and expanded hospital will address:

- Current capacity constraints
- Issues of access and equity, and the need for patients to travel out of the region for care
- Increases in acute activity and response to ageing population and increasing demand for medical and surgical services.



**Site map**

## Scope of works

The redevelopment will deliver:

- A new emergency department (ED) and emergency short-stay unit to improve patient flow and reduce wait times
- New state-of-the-art intensive care unit (ICU)
- Theatres and endoscopy procedure rooms which will double in number
- A dedicated cardiology inpatient unit (IPU), coronary care unit and catheterisation lab
- A new vascular surgery service and expanded orthopaedic, general surgery and urology services
- Overnight surgical IPUs and a dedicated day surgery unit
- New medical IPUs for specialties including gastroenterology, respiratory, oncology, endocrinology, and general medicine
- A new acute mental health IPU
- A psychiatric emergency care centre for emergency and crisis response adjacent to the ED
- An expanded acute stroke unit collocated with a dedicated rehabilitation service to ensure early access to rehabilitation and minimise functional loss
- A new nuclear medicine department to support expanded clinical services including cancer, cardiology and respiratory care
- A new MRI service to provide improved diagnostic capacity
- Expanded medical imaging including CT, X-ray, ultrasound and mammography to support clinical services
- Significant increase in aged care capacity in a dedicated acute aged care ward
- A sub-acute geriatric evaluation and management service
- A dedicated palliative care facility
- A new paediatric assessment unit which will provide additional capacity for day presentations and short stay admissions
- A specialist rehabilitation unit for a range of conditions including stroke, orthopaedics, brain and spine injuries
- Expanded outpatient departments for follow up and management of admitted and non-admitted services
- Helipad on top of the new building with direct access to ICU and ED.



## The Site

The site is located at 2 Scenic Drive, Nowra, in the Shoalhaven region and the Shoalhaven Local Government Area. It has a frontage to Scenic Drive to the north and west, Shoalhaven Street to the east and North Street to the south.

The Shoalhaven region is located on the South Coast of NSW, which spans from Berry to Kangaroo Valley to the north, to North Durras in the South, and west across the Morton National Park. The regional city of Nowra is the major population hub of the Shoalhaven region and the gateway to a large number of south coast towns.

The site shape is defined by Shoalhaven River to the north and west, with predominately residential land to the south and east. Surrounding land uses are generally low density residential with significant vegetation.



*The site in its surrounding context.*

**Source:**  
Shoalhaven  
Hospital Concept  
Design Traffic  
Report, TTW

## Project milestones

Date/ Timeframe	Activity Milestone
2020	Clinical Services Plan Development
2020	Function design brief/ scope finalised
Early 2022	Preliminary Business Case
Mid 2022	Schematic Design
Mid 2022	Final Business Case
Mid 2022	State Significant Development Application lodged
Late 2022	Detail design complete
Late 2022	Early works
2023	Main works
2026	Construction completion

# Engagement

## Objectives

The communications and engagement objectives for this project are to:

- Keep stakeholders informed of the project's progress
- Deliver targeted and timely communications and engagement activities
- Engage stakeholders in discussions about design and function
- Provide the community with an opportunity to meet the project team
- Inform the public about the updated designs
- Seek feedback prior to lodgement of the SSDA.



*Artist's impression of the new hospital*



## Engagement Approach

The communications and engagement approach for the Shoalhaven Hospital Redevelopment project focuses on early, proactive, transparent and regular communications and engagement throughout all stages of the project. This helps to develop community and stakeholder understanding for the project, ensure opportunities for stakeholder and community input and feedback, identify and manage issues early and help achieve better outcomes for the project and community.

The approach follows the Department of Planning and Environment's *Undertaking Engagement Guidelines for State Significant Projects, July 2021* by undertaking planned and early engagement with stakeholders and the community.

Ongoing and thorough consultation has occurred with key stakeholders, including clinicians, Shoalhaven City Council and relevant government agencies. Stakeholders were identified early and a range of engagement techniques were used to ensure broad reach of all stakeholders.

This report outlines how stakeholders have been engaged, the outcomes of the engagement activities, the feedback received and how the project team has addressed such feedback.

The level of public participation required for this project is informed by the IAP2 spectrum and based on the level of public impact from the project and the scope for community and stakeholder input to the Shoalhaven Hospital Redevelopment.

Based on the IAP2 Spectrum, the project team listed its key stakeholders (internal and external) and the most suitable approach for engagement as shown in the table below. (For reference: [IAP2 Public Participation Spectrum](#).)

Inform	Consult	Involve	Collaborate
We will keep you informed	We will keep you informed, listen to and acknowledge concerns and aspirations, and provide feedback on how public input influenced the decision	We will work with you to ensure that your concerns and aspirations are directly reflected in the alternatives developed and provide feedback on how public input influenced the decision	We will look to you for advice and innovation in formulating solutions and incorporate your advice and recommendations into the decision to the maximum extent possible

Inform	Consult	Involve	Collaborate
<ul style="list-style-type: none"> <li>• NSW Treasury / Finance</li> <li>• State Member for South Coast</li> <li>• State Member for Kiama</li> <li>• Federal Member for Gilmour</li> <li>• Local and metro media</li> </ul>	<ul style="list-style-type: none"> <li>• Local residents and community members</li> <li>• Patients</li> <li>• LHD staff not directly involved in project user groups</li> <li>• ISLHD Board</li> <li>• Shoalhaven Business Chamber</li> <li>• Shoalhaven Professional Business Association</li> <li>• Regional Development Australia, Far South Coast</li> <li>• Milton Ulladulla Business Chamber</li> <li>• Berry Chamber of Commerce</li> <li>• Sussex Inlet District Chamber of Commerce</li> <li>• Shoalhaven Historical Society</li> <li>• Callala Bay Community Association</li> <li>• Shoalhaven Neighbourhood Services</li> <li>• Vincentia Matters</li> <li>• Bay and Basin Community Resources</li> <li>• South Coast Aboriginal Medical Services</li> <li>• Illaroo Aboriginal Corporation</li> <li>• Waminda Aboriginal Women's Corporation</li> <li>• Ulladulla Local Aboriginal Land Council</li> <li>• Nowra Local Aboriginal Land Council</li> <li>• Cullunghutti Aboriginal Child and Family Centre</li> <li>• Children of the Bomaderry Aboriginal Children's Home Incorporation</li> <li>• Oolong Aboriginal House</li> <li>• Nowra Shoalhaven Hospital Auxiliary</li> <li>• Green Point Hospital Auxiliary</li> <li>• David Berry Hospital Auxiliary</li> <li>• Shoalhaven Women's Health Centre</li> </ul>	<ul style="list-style-type: none"> <li>• Local Council</li> <li>• NSW Ministry of Health</li> <li>• Transport for NSW</li> <li>• NSW Ambulance</li> <li>• Roads and Maritime Services</li> <li>• NSW Water</li> <li>• NSW Police</li> <li>• NSW Communities and Justice</li> <li>• NSW Office of Environment and Heritage</li> <li>• NSW Department of Planning, Industry and Environment</li> </ul>	<ul style="list-style-type: none"> <li>• Redevelopment Consumer Committee</li> <li>• Aboriginal Health Unit</li> <li>• Project User Groups</li> <li>• ISLHD Heads of Departments</li> <li>• ISLHD Nurse Managers</li> <li>• ISHLD Allied Health Managers</li> </ul>

## Engagement undertaken

This section outlines how the Shoalhaven Hospital Redevelopment project has strategically and proactively engaged with the community and key stakeholders including staff, health providers, Government agencies, patients, neighbours and surrounding communities.

### Internal stakeholder engagement

At the core of the planning and design process are project user groups and working groups which are established to inform the functional design brief and schematic and detailed design of the project. A snapshot of this engagement is provided below. Meetings are led by the Shoalhaven Hospital Redevelopment Lead Design team and are attended by hospital and LHD staff.

Further detail can be found in the Shoalhaven Hospital Schematic Design Report, prepared by Conrad Gargett.



## External engagement

In addition to the project user groups and working groups, the project team also actively engages with the various external stakeholders within the Shoalhaven region to ensure we are building a facility that meets their health needs and is designed to make everyone feel safe, welcome, and comfortable. These engagement activities are done in alignment with the various design stages. Below is the list of external engagement activities that occurred prior to lodgement of the SSDA.

### Engagement Tracker

Date	Stakeholder	No. reached	Activity	Purpose
08/2021	• General Community	• N/A	• Media Release	• Announce Master Plan
1/12/2021	• Aboriginal Community	• 35	• Face-to-face workshop	• Design Jam Workshop
25/03/22	• Stakeholder letters ( <b>Appendix A</b> )	• 60	• Email letter	• To provide a project update to all stakeholders and invite them to either attend an information session or have their own personalised briefing
	• Immediate neighbours ( <b>Appendix B</b> )	• 180	• Letterbox drop	• To provide a project update and invite all immediate neighbours to the drop-in sessions, specifically the one at the hospital
29/03/22	• All stakeholders	• N/A	• Media release ( <b>Appendix C</b> )	• To inform all stakeholders and residents about the upcoming engagement sessions
30/03/22	• All stakeholders	• N/A	• Advert in South Coast Register and Nowra News ( <b>Appendix D</b> )	• Chief Executive update inviting residents to attend a pop-up session
	• Clinicians and hospital staff	• 250	• Staff BBQ and information session	• To present the updated plans to all staff and seek feedback prior to lodging the SSDA
	• Immediate neighbours	• 12	• Information session ( <b>Display boards can be found in Appendix E</b> )	• To present the updated plans and seek feedback prior to lodging the SSDA
31/03/22	• Passers-by at Stockland Nowra	• 60		
	• Passers-by in Berry	• 8		
1/04/22	• Passers-by at Ulladulla Shopping Centre	• 35		
	• Passers-by at Vincentia Shopping Village	• 10		
2/04/22	• Passers-by at Bunnings Nowra	• 72		
14/04/22	• Passers-by in Berry	• 10		
	• David Berry Hospital Staff	• 20		







## Agency Engagement

Prior to lodging the SSDA and to satisfy the SEARs, the table below provides an outline of the key agency meetings. More information on each meeting can be found in the EIS and supporting technical reports.

Agency	Meeting	Date
State Design Review Panel	SDRP 1	5 May 2021
	SDRP 2	14 July 2021
	SDRP 3	3 November 2021
	SDRP 4	9 March 2022
	SDRP (informal meeting)	26 May 2022
Transport for NSW	Transport Working Group 1	18 May 2021
	Transport Working Group 2	18 May 2022
Shoalhaven City Council	Ongoing monthly meetings with Council Working Group	Ongoing
	Council Briefing: Civil Design and Infrastructure	23 May 2022
	Council Briefing: Traffic and Parking	25 May 2022
	Council Briefing: General Design Update and Town Planning	26 May 2022
Shoalhaven Water and Council	Meeting 1	8 March 2022
	Meeting 2	29 March 2022
	Meeting 3	3 May 2022
	Meeting 4	17 May 2022
Jemena	Meeting 1	Late 2021



*Artist's impression of the new hospital*

## Key project issues and outcomes

The Shoalhaven Hospital Redevelopment team has worked proactively throughout the project to identify potential and emerging issues and develop mitigation measures, which are outlined in the below table. A strategic and early engagement approach has enabled the project team to respond in a timely matter and achieve outcomes that meet the needs of the project, its community and stakeholders.

Topic	Key issue	Project Response
Parking	Hospital staff and visitors using the surrounding streets to park instead of the new car park. Concern that a bigger hospital will only exasperate the parking issue.	NSW Health is working closely with Shoalhaven City Council and ISLHD to address current parking issues.
	Would like to see restricted parking in the surrounding streets which would hopefully address some parking issues.	Street parking falls outside the remit of this project and should be addressed with Shoalhaven City Council.
	Would like to see only one side of Shoalhaven and North Streets able to be parked on.	Street parking falls outside the remit of this project and should be addressed with Shoalhaven City Council.
	Would like to know where all the construction workers will park.	Construction workers will be encouraged to use public transport and not park in surrounding streets.
	Residents struggle to enter/exit driveways safely in surrounding streets because the streets are filled with parking from hospital workers/visitors.	Staff and visitors are encouraged to park on site, in the recently completed multi-storey car park. We understand there is resistance to parking in the car park and we are working with staff to try and resolve these issues.
	Would like to understand exactly how the parking issues will be addressed before the new hospital is built and operational.	NSW Health is working closely with Shoalhaven City Council and ISLHD to address current parking issues.
	The car spaces in the multi-storey car park are too small and it's difficult to manoeuvre car around the car park.	The car park is compliant with applicable standards and guidelines.
	The multi-storey car park has improved the visitor experience exponentially.	Noted.
	The car park should be free.	The fees associated with the car park are in line with NSW Health parking policy.
Traffic	Concern about existing traffic along Shoalhaven Street.	NSW Health is working closely with Shoalhaven City Council and ISLHD to address current traffic issues.
	Concern about the location of the new driveway and the impacts to immediate neighbours, particularly regarding headlights of the cars entering and exiting the hospital.	Noted.
Public transport	Need to find a solution to the limited public transport options for both workers and hospital visitors. Virtually impossible to travel to the hospital via public transport.	As part of this SSDA, we are undertaking detailed discussions with Transport for NSW and transport providers to investigate improving public transport to and from the hospital precinct.
Nowra Park	Concern that too much of the existing Nowra Park is being taken over by the redevelopment.	Although Nowra Park was acquired to allow the project to go ahead, the project team is committed to providing extensive landscaping to the remainder of the greenspace, including a new children's playground. This will ensure the parkland will be much more practical and able to be better utilised by the community.
	Would like assurances that the blackbutt tree will be protected.	The blackbutt tree will remain in place and will be a focal point of landscaping designs.
	Concern about loss of trees in the open space area.	The redevelopment will require the removal of a small number of trees. In addition, the project team is committed to replanting at least the same number of trees that will be removed.

Topic	Key issue	Project Response
<b>Preschool</b>	Question about the new location of the preschool – why it had to be moved and why it will be moved to this specific spot.	<p>To accommodate the new hospital building the preschool will be relocated to the southern end of the hospital campus. This follows extensive consultation with the preschool operators and Shoalhaven City Council.</p> <p>The new building will include a dedicated parking zone for carers and staff, including a drop-off zone.</p>
<b>Wayfinding and signage</b>	Would like to see better signage and wayfinding from the centre of town directing people to the hospital. Currently people get very lost driving from the Princes Highway to the hospital.	Noted. A wayfinding strategy is being prepared and will include ideas on how to improve the signage from the Princes Highway to the hospital.
<b>Location of the new hospital</b>	Would like to see the new hospital on a different greenfield site, further south than the existing hospital.	<p>In 2012 the then Health Minister Jillian Skinner announced plans for a health precinct around the hospital and Cancer Care Centre. Conversations have continued since then about the acquisition of Nowra Park to enable the future creation of a health precinct.</p> <p>In November 2020, the NSW Government provided an additional \$4 million to fast track the expansion of the hospital campus, including acquiring the park and undertaking site investigations.</p> <p>As part of the long-term planning for the site, almost \$65 million worth of upgrades have been undertaken:</p> <ul style="list-style-type: none"> <li>• Shoalhaven Cancer Care Centre</li> <li>• Multi-storey car park</li> <li>• Sub-acute mental health unit</li> <li>• Emergency Department refurbishment and endoscopy unit</li> <li>• GP super clinic</li> </ul> <p>A site option review was undertaken based on criteria including population growth, local demographics, health services, transport and other services. Relocating the hospital to a new site outside of Nowra would significantly increase the cost of the project due to additional land acquisition and development costs, on-site services (utilities) and the need to re-establish clinical services from the current site.</p>
	The hospital should be built on a bigger site that isn't in the town centre.	Once the preschool has been relocated, there is ample room to build a new hospital at the existing health precinct.
	The site should be sold off for private development and apartments/town houses should be built. The views to the river and mountains would be excellent, and the government could make a lot of money to re-invest into a new hospital site, further south.	<p>The new building has been designed to be sympathetic with its surrounds and the original hospital precinct. The building steps down towards the greenspace to minimise the impacts on the public parkland.</p> <p>During previous consultation sessions, the community had been very clear about maintaining as much public open space as possible and the hospital has been built with this in mind.</p>
	The building is too high and out of character.	<p>The new building has been designed to be sympathetic with its surrounds and the original hospital precinct. The building steps down towards the greenspace to minimise the impacts on the public parkland.</p> <p>During previous consultation sessions, the community had been very clear about maintaining as much public open space as possible and the hospital has been built with this in mind.</p>
<b>Hospital services</b>	Concern about existing emergency wait times. This should be a priority.	A new and improved emergency department will assist with the current emergency wait times.
	Would like to know if there will be a 24hr GP service.	The scope of this project does not include a 24hr GP service.
	Would like to know if the ambulatory care services are being expanded.	Yes, ambulatory care services are being expanded.

Topic	Key issue	Project Response
<b>Positive feedback</b>	Concern that there won't be enough staff to be able to service the hospital. The existing hospital is already seemingly understaffed.	NSW Health together with ISLHD will undertake a thorough recruitment process prior to the new hospital becoming operational.
	Pleased to see the extensive list of new and improved services, meaning less travel to Wollongong Hospital.	Noted.
	Looks like an excellent design.	Noted.
	Excited for the redevelopment to occur.	Noted.
	The community is in desperate need for a new hospital, and this plan looks fantastic.	Noted.
<b>Consultation process</b>	Pleased to see the expansion of mental health facilities.	Noted.
	Pleased to see the project team out and about around the whole region.	Noted.
	Keen to hear more from the project team at more frequent intervals.	Noted. The project team is committed to keeping all stakeholders informed and will continue to do so. More frequent communications will occur and may include monthly newsletters, additional pop-up stalls or other initiatives.
	Would like a session to be held in Bomaderry in the future.	Noted. During the next round of consultation, the project team will hold a session in Bomaderry.
	The Vincentia session should have been held at the new shopping centre.	Noted. During the next round of consultation, the project team will hold a session at the new shopping centre.
<b>Miscellaneous</b>	It seems there has not been any consultation with the ambulance services and if there has, it's only been at an executive level and not at the grassroots level.	Ambulance representatives have provided feedback and contributed to the development of the SSDA
	Questions about building an adjoining private hospital next to the public hospital.	This project does not include the development of a private hospital.
	Would like to see details about the stormwater runoff plan.	More details about the stormwater runoff plan can be found in the Stormwater Report.
	Would like to know where the demountable buildings will be relocated to.	Demountable buildings on Shoalhaven Street are being relocated to make way for electrical infrastructure. They will be relocated to another part of the hospital site.
	Milton-Ulladulla Hospital is in desperate need for an upgrade. Would like to know when this will occur.	Milton-Ulladulla Hospital services are not under review as part of this project. However, this feedback has been given to the ISLHD.
	Would like to know when birthing services will be brought back to Milton-Ulladulla Hospital.	Birthing services at Milton-Ulladulla Hospital are not under review as part of this project. However, this feedback has been given to the ISLHD.
	Concern that new doctors and healthcare workers who move to the area will not be able to afford to buy/rent and therefore won't come to Nowra.	Noted.
	Would like to know where the helipad will be located during construction.	The project team is looking at a number of locations for the temporary helipad and more information will be provided during the public exhibition.  Patient transport is an essential service and will continue to be provided during the redevelopment.



Topic	Key issue	Project Response
	Would like to know what kind of environmental considerations will be included in the redevelopment?	<p>The new hospital will be a sustainable and environmentally friendly facility with more efficient building systems and renewable energy strategies.</p> <p>A broad range of initiatives to reduce greenhouse gas emissions will be introduced. The design will reduce energy consumption and will include plenty of natural light, access to outdoor courtyards and spaces to relax and socialise.</p> <p>Examples of the project's sustainability initiatives include:</p> <ul style="list-style-type: none"><li>• Prioritising northern orientation to optimise solar control in summer and winter</li><li>• Providing solar panels on available roof space</li><li>• Minimising the need for use of fossil fuels in powering the hospital by using electrical heating instead of gas heating.</li></ul>



***Shoalhaven River***



## Next steps

This Engagement Report demonstrates how planned and transparent communication and engagement activity has met the consultation requirements prescribed by the SEARs. It demonstrates how these consultations have led to changed outcomes for the project design and construction.

The Shoalhaven Hospital Redevelopment team will consider and respond to any issues raised with this submission and continue to engage with the community, health service staff and relevant agencies during future stages of the planning, development, and approvals process.

The project team will also actively engage with our stakeholders after the SSD approvals phase through to the delivery and operational commissioning phases.

The Shoalhaven Hospital Redevelopment team will continue to update project webpages and produce regular content to keep all stakeholders informed and engaged throughout the lifecycle of the project. A Communications and Engagement Plan has been developed and is regularly updated to guide the project's proactive engagement approach during the planning, design, construction and operational commissioning of the project.



*Participants at the Design Jam workshop*



Berry Chamber of Commerce and Tourism

[info@berry.org.au](mailto:info@berry.org.au)

Dear Jean,

We are pleased to provide an update on the Shoalhaven Hospital Redevelopment and invite you to view the latest designs at one of our upcoming community information sessions or via our new dedicated website.

The NSW Government has committed \$438 million to redevelop and expand the existing Shoalhaven District Memorial Hospital to meet the needs of the growing Shoalhaven community. The region is growing and ageing and people are living longer, many with chronic and complex conditions. The Shoalhaven catchment is forecast to grow 12% by 2031, with significantly faster population growth in the 70+ age groups.

The release of the updated designs follows extensive consultation with staff, our consumer representatives and other community groups and is the next significant step in the delivery of the redevelopment. We're now encouraging the local community to provide feedback which will inform the design of the project.

The state-of-the-art facility will feature a new building for acute care services including a new emergency department, intensive care, operating theatres, medical and surgical wards and mental health units. It is being designed to directly connect to the existing hospital which will undergo varying levels of refurbishment.

Access to the hospital will be improved with alternate entry and drop off areas and there will be a new dedicated entrance for ambulances.

The southern end of Nowra Park will be retained as greenspace for the local community to enjoy and landscaped areas will be established on the hospital's ground to create a welcoming space for patients, staff and visitors.

We invite you to visit our new website [www.shoalhavenredevelopment.health.nsw.gov.au](http://www.shoalhavenredevelopment.health.nsw.gov.au) to find out more information about the updated designs and provide feedback, prior to lodgement of the State Significant Development Application later this year. We will continue to provide opportunities for consultation and updates as the project progresses.

We are holding a number of pop-up information stalls around the region to provide people with an opportunity to meet the project team and provide feedback. We would love to see you at one of our sessions:

- Thursday 31 March from 10am – noon at Stockland Nowra, 32 East Street, Nowra
- Thursday 31 March from 2pm – 4pm at Berry Square (next to Berry Pharmacy) 113 Queen Street, Berry
- Friday 1 April from 10am – noon at Ulladulla Shopping Centre, 199 Princes Highway, Ulladulla
- Friday 1 April from 2pm – 4pm at Vincentia Shopping Village, 5 Burton Street, Vincentia
- Saturday 2 April from 10am – noon at Bunnings Nowra, 147 Princes Highway, Nowra

If you would like further information, please contact the project team at [HI-shoalhavenredevelopment@health.nsw.gov.au](mailto:HI-shoalhavenredevelopment@health.nsw.gov.au)

We look forward to continuing to work with you as we progress and build a new state-of-the-art hospital for our region.

Kind regards

Margot Mains  
Chief Executive, Illawarra Shoalhaven Local Health District

Michael Bellman  
Senior Project Director, Health Infrastructure



Dear neighbour,

I am pleased to provide an update on the Shoalhaven Hospital Redevelopment. The designs for the hospital have progressed, and we now invite you to visit our new website [www.shoalhavenredevelopment.health.nsw.gov.au](http://www.shoalhavenredevelopment.health.nsw.gov.au) to find out more information about the updated designs. We also invite you to provide valuable feedback prior to lodgement of the State Significant Development Application later this year.

The NSW Government has committed \$438 million to redevelop and expand the existing Shoalhaven District Memorial Hospital to meet the needs of the growing Shoalhaven community. The region is growing and ageing and people are living longer, many with chronic and complex conditions. The Shoalhaven catchment is forecast to grow 12% by 2031, with significantly faster population growth in the 70+ age groups.

A new building for acute care services including a new emergency department, intensive care, operating theatres, medical and surgical wards and mental health units is being designed to directly connect to the existing hospital.

In September 2021 the Master Plan for the redevelopment was finalised and exhibited, and valuable feedback was provided.

The release of the updated designs follows extensive consultation with staff, our consumer representatives and other community groups and is the next significant step in the delivery of the redevelopment. We will continue to provide opportunities for consultation and updates as the project progresses.

**We would like to invite you to an informal drop-in session for local residents held at our project site office (behind the Grand Pacific Health building) on Wednesday 30 March between 4pm and 6pm. Please note, there will be no formal presentation, so drop in at a time that suits you.**

We will also be holding a number of pop-up stalls around the region to provide the entire community with an opportunity to meet the project team and provide feedback. If you can't make the session at the Hospital, please come along to another one:

- Thursday 31 March from 10am – noon at Stockland Nowra, 32 East Street, Nowra
- Thursday 31 March from 2pm – 4pm at Berry Square (next to Berry Pharmacy) 113 Queen Street, Berry
- Friday 1 April from 10am – noon at Ulladulla Shopping Centre, 199 Princes Highway, Ulladulla
- Friday 1 April from 2pm – 4pm at Vincentia Shopping Village, 5 Burton Street, Vincentia
- Saturday 2 April from 10am – noon at Bunnings Nowra, 147 Princes Highway, Nowra

Alternatively, please visit our new project website [www.shoalhavenredevelopment.health.nsw.gov.au](http://www.shoalhavenredevelopment.health.nsw.gov.au) to view the plans and provide your feedback. If you would like further information, please contact the project team at [HI-shoalhavenredevelopment@health.nsw.gov.au](mailto:HI-shoalhavenredevelopment@health.nsw.gov.au)

I look forward to continuing to work with you as we progress and build a new state-of-the-art hospital for our region.

Kind regards

Michael Bellman

Senior Project Director



**Brad Hazzard**

Minister for Health

**Bronnie Taylor**

Minister for Women, Regional Health and Mental Health

## **MEDIA RELEASE**

Wednesday, 30 March 2022

### **DESIGNS FOR \$438M SHOALHAVEN HOSPITAL UNVEILED**

The community has been provided with its first look at designs for the \$438 million Shoalhaven Hospital redevelopment showcasing the vision for the state-of-the-art health facility.

Minister for Health Brad Hazzard said the NSW Government is investing in a significant expansion of Shoalhaven Hospital, which will provide the local community with enhanced health services.

“In a major step forward for the redevelopment, new artist impressions have been unveiled today revealing the design for the hospital precinct, which will transform healthcare services for the Shoalhaven community and improve health outcomes,” Mr Hazzard said.

Minister for Regional Health Bronnie Taylor said the redevelopment of Shoalhaven Hospital is about future proofing healthcare in the region.

“I’m very excited to share the new artist impressions of the Shoalhaven Hospital redevelopment with the community and encourage everyone to provide feedback as we move forward with its delivery. This major investment from the NSW Government marks a new era in healthcare for the South Coast,” Mrs Taylor said.

“A new acute services building connecting to the existing hospital, rooftop helipad, and refurbishment of existing hospital buildings are just some of the highlights of this major redevelopment.

“The NSW Government is also improving access to the hospital with alternate entry and drop off areas on Shoalhaven Street and off North Street. There will also be a new dedicated entrance for ambulances.

“The project team has been working closely with clinicians and key healthcare stakeholders and we’re now encouraging the local community to provide their feedback which will inform the design of the project.”

Local Member and the Parliamentary Secretary for the South Coast, Shelley Hancock, said the southern end of Nowra Park will be retained as greenspace for the local community to enjoy.

“Landscaped areas will also be established on the hospital’s ground to create a welcoming space and enhanced experience for patients, staff and visitors,” Mrs Hancock said.

Mrs Hancock encouraged the local community to attend pop-up stalls that will be taking place throughout the region, where members of the project team will be on site to answer any questions about the redevelopment.

The community pop-ups are scheduled for the following locations and times:

- Shoalhaven Hospital, Wednesday, 30 March 2022 from 4pm – 6pm
- Stockland Nowra, Thursday, 31 March from 10am – 12pm
- Berry Mall (next to Berry Pharmacy), Thursday, 31 March from 2pm – 4pm
- Ulladulla Shopping Centre, Friday, 1 April from 10am – 12pm
- Vincentia Shopping Village, Friday, 1 April from 2pm – 4pm
- Bunnings Nowra, Saturday, 2 April from 10am – 12pm

The \$438 million Shoalhaven Hospital redevelopment will provide new facilities including cardiology, mental health and aged care wards, more operating theatres and a new emergency department, and there will also be greater access to more specialised staff, equipment and technology.

The Shoalhaven District Memorial Hospital will complement other health projects for the Illawarra Shoalhaven community, including \$700 million for the new Shellharbour Hospital, and recently completed projects including \$11.8 million for the new Shoalhaven Hospital multistorey car park, \$37.1 million towards the Bulli Hospital, and the Dapto and Ulladulla HealthOne projects, delivered as part of the \$100 million HealthOne program.

The project is part of the NSW Government’s record \$10.8 billion investment in health infrastructure to 2024-25, with nearly a third of the capital allocation in this financial year going towards regional and rural health facilities.

To view the plans and find out more about the proposed new hospital, please visit [www.shoalhavenredevelopment.health.nsw.gov.au](http://www.shoalhavenredevelopment.health.nsw.gov.au)

The renders of the hospital can [be downloaded here](#)

**MEDIA: Rory Cunningham | Minister Taylor | 0457 674 099**  
**Nicolette Kormendy | Minister Hazzard | 0429 064 897**



# Shoalhaven Hospital Redevelopment update

I am delighted to be able to share the latest design update for the Shoalhaven District Memorial Hospital redevelopment.

For the first time, the community is able to see what the redeveloped hospital might look like and the scope of services which will be provided. With the easing of COVID-19 restrictions, we are finally able to meet face-to-face with the community and as a result, we're planning a "road show" for a number of Shoalhaven locations in the coming weeks (see details in box). This will allow community members to see these draft plans first-hand, offer any feedback or ask questions of the project team.



Although the design is yet to be finalised, this update offers a clearer idea of the location and size of the new acute care building, the location of the relocated Shoalhaven Community Preschool and more details about the future of the existing hospital.

The redevelopment will provide state-of-the-art health care for the community, including a new emergency department, medical wards, dedicated mental health ward, cardiology ward and double the number of operating theatres and surgical services.

A new seven-storey building is being proposed to be built with a helipad on top. It has been designed in a way that it will step up towards the north of the site, in order to ensure a lower scale building adjacent to the park. It will be linked to the existing hospital which will undergo varying levels of refurbishment.

Public access to the hospital will be improved with alternate entry and drop off options on Shoalhaven Street and a new ambulance entry from the street.

The final design of the new hospital aims to blend with the surrounding native landscape to create a building within a natural setting, and, with incredible views to the mountains and river. It will allow for parkland to the south of the building and more landscaped areas around the significant blackbutt tree on Nowra Park.

## Engaging with Aboriginal communities

The Illawarra Shoalhaven Local Health District operates on the lands of the Dharawal and Yuin Nations which includes many language groups, clans, tribal groups and discrete communities including the Wadi Wadi, Walbunga, Wandiwandian and Jerrinja people.

The local Aboriginal communities are integral to the design process for the hospital redevelopment to help ensure a culturally safe place for all consumers.

Consultation with Aboriginal stakeholders has identified the need to provide health services and facilities that are safe and culturally welcome so the Aboriginal community feels welcomed and respected when receiving care. We have been working closely with our local community who have been providing vital ideas and feedback about how best we can do this.

With this in mind, the landscape and First Nations people's connection to country is of prime importance and by providing a strong connection with the natural environment and

cultural identity this protects the health and wellbeing of Country and by extension all the community.

In late 2021 we held a Connecting with Country workshop and Design Jam attended by more than 35 community members, staff and project team members. It provided an opportunity for people to share stories and exchange ideas about Nowra Park and the blackbutt tree and to think about how the Aboriginal heritage and cultural significance can be imbedded in the redeveloped hospital.

## Shoalhaven Community Preschool

To accommodate the new hospital building, the existing preschool will be relocated to the southern end of the Hospital campus. This follows extensive consultation with the preschool operators and Shoalhaven City Council. The project team is continuing to consult with the preschool on the design and requirements of the new facility.

The new building will include a dedicated parking zone for carers and staff, including a drop-off zone. In addition to the new preschool, the southern end of the campus will also be retained as greenspace, enhancing the area's family-friendly atmosphere.

Construction is due to start this year and the current preschool will remain open until the new building is completed.

## What's next?

During 2022, the team will continue to work on and refine the design of the new building and the scale of refurbishment. The State Significant Development Application (SSDA) will be lodged with the NSW Government in the second half of this year.

Pending planning approval, construction will commence in 2023 with the intention for the new hospital to be completed and operational in mid-2026.

I encourage all community members to visit the team during the regional "road show", or go to the project website ([www.shoalhavenredevelopment.health.nsw.gov.au](http://www.shoalhavenredevelopment.health.nsw.gov.au)) for more information and to offer your feedback.

Margot Mains, ISLHD Chief Executive



## Pop-up information stalls

- Thursday 31 March from 10am – noon at Stockland Nowra, 32 East Street, Nowra
- Thursday 31 March from 2pm – 4pm at Berry Square (next to Berry Pharmacy) 113 Queen Street, Berry
- Friday 1 April from 10am – noon at Ulladulla Shopping Centre, 199 Princes Highway, Ulladulla
- Friday 1 April from 2pm – 4pm at Vincentia Shopping Village, 5 Burton Street, Vincentia
- Saturday 2 April from 10am – noon at Bunnings Nowra, 147 Princes Highway, Nowra



Health

Illawarra Shoalhaven  
Local Health District

[islhd.health.nsw.gov.au](http://islhd.health.nsw.gov.au)  
search Shoalhaven Hospital Redevelopment





ARTIST'S IMPRESSION

# Shoalhaven Hospital Redevelopment

The NSW Government has committed \$438 million in the redevelopment of Shoalhaven District Memorial Hospital. It will be the health hub for the region, providing the majority of emergency, critical care, acute and sub-acute and non-admitted services locally, reducing the need to transfer patients to Wollongong and Sydney.



ARTIST'S IMPRESSION

For more information visit:  
**shoalhavenredevelopment.  
health.nsw.gov.au**





# Shoalhaven Hospital Redevelopment

The new seven-storey hospital building will provide:

- A new emergency department (ED) and emergency short-stay unit to improve patient flow and reduce wait times
- New state-of-the-art intensive care unit (ICU)
- Theatres and endoscopy procedure rooms, doubling capacity
- A dedicated cardiology inpatient unit (IPU), coronary care unit and catheterisation lab
- A new vascular surgery service and expanded orthopaedic, general surgery and urology services
- Overnight surgical IPUs and a dedicated day surgery unit
- New medical IPUs for specialties including gastroenterology, respiratory, oncology, endocrinology and general medicine
- A new acute mental health IPU
- A psychiatric emergency care centre for emergency and crisis response adjacent to the ED
- An expanded acute stroke unit collocated with a dedicated rehabilitation service to ensure early access to rehabilitation and minimise functional loss
- A new nuclear medicine department to support expanded clinical services including cancer, cardiology and respiratory care
- A new MRI service to provide improved diagnostic capacity
- Expanded medical imaging including CT, X-ray, ultrasound and mammography to support clinical services
- Significant increase in aged care capacity in a dedicated ward
- A sub-acute geriatric evaluation and management service
- A dedicated palliative care facility
- A new paediatric assessment unit which will provide additional capacity for day presentations and short-stay admissions
- A specialist rehabilitation unit for a range of conditions including stroke, orthopaedics, brain and spine injuries
- Expanded outpatient departments for follow up and management of admitted and non-admitted services
- Helipad on top of the new building with direct access to ICU and ED.

For more information visit:  
**shoalhavenredevelopment.**  
**health.nsw.gov.au**





# Shoalhaven Hospital Redevelopment



## Project timeline



For more information visit:  
**[shoalhavenredevelopment.health.nsw.gov.au](https://shoalhavenredevelopment.health.nsw.gov.au)**





# Shoalhaven Hospital Redevelopment



## Landscaping

The new seven-storey hospital will be built next to the existing hospital. It will merge with the surrounding native landscape so that it becomes a building within a natural setting, and represents the benefits of the environment, biodiversity, sustainability and the community.

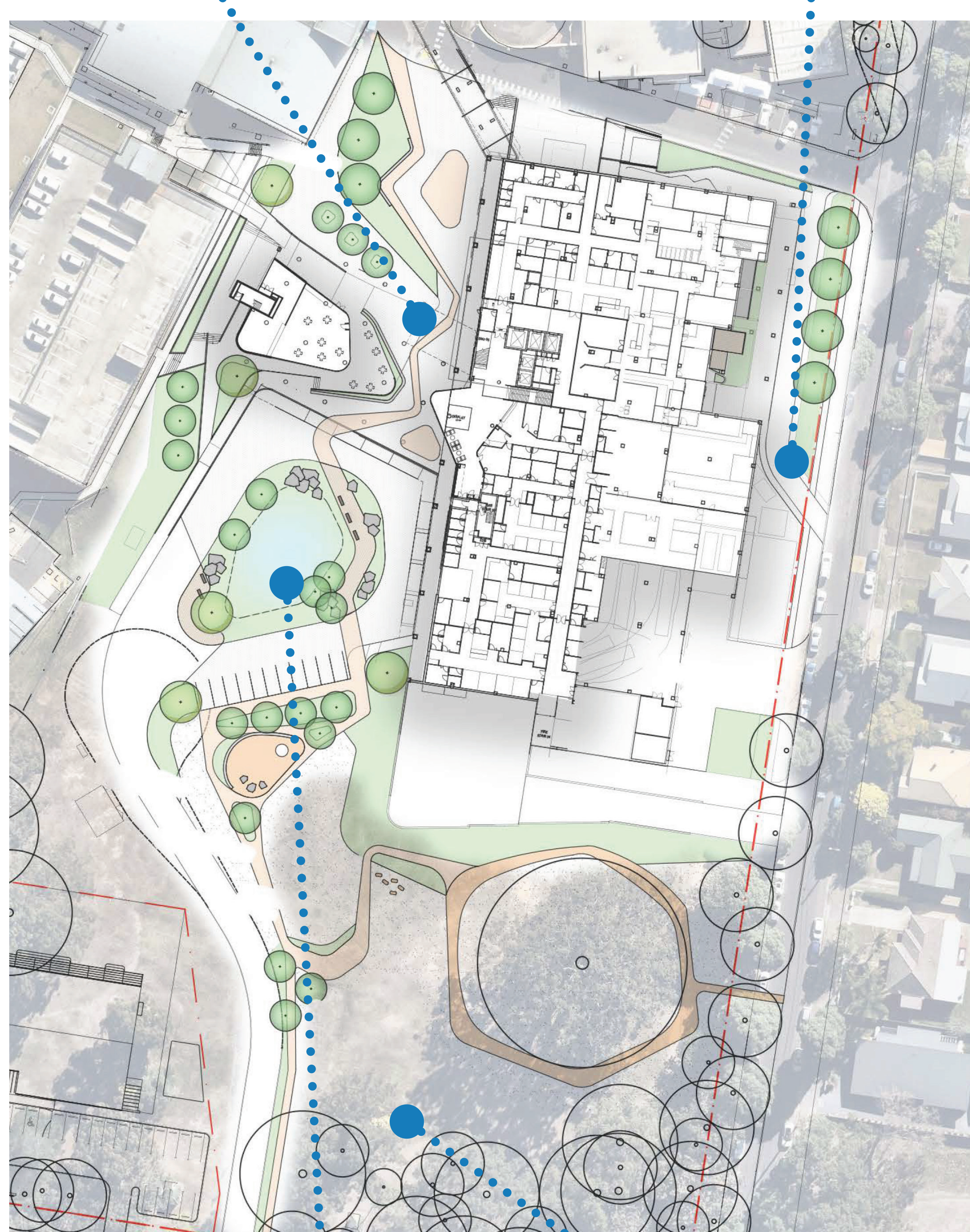
One of the key objectives is to provide culturally appropriate facilities to meet the needs of the First Nations people.

The project team is working closely with the local Indigenous community to ensure the new Shoalhaven Hospital is designed to promote cultural safety and to maximise its connection to Country of the First Nations people on which it is situated.

### Open space



### Street drop-off



### Entry raingardens



### Forecourt

For more information visit:  
**[shoalhavenredevelopment.health.nsw.gov.au](http://shoalhavenredevelopment.health.nsw.gov.au)**





# Shoalhaven Hospital Redevelopment

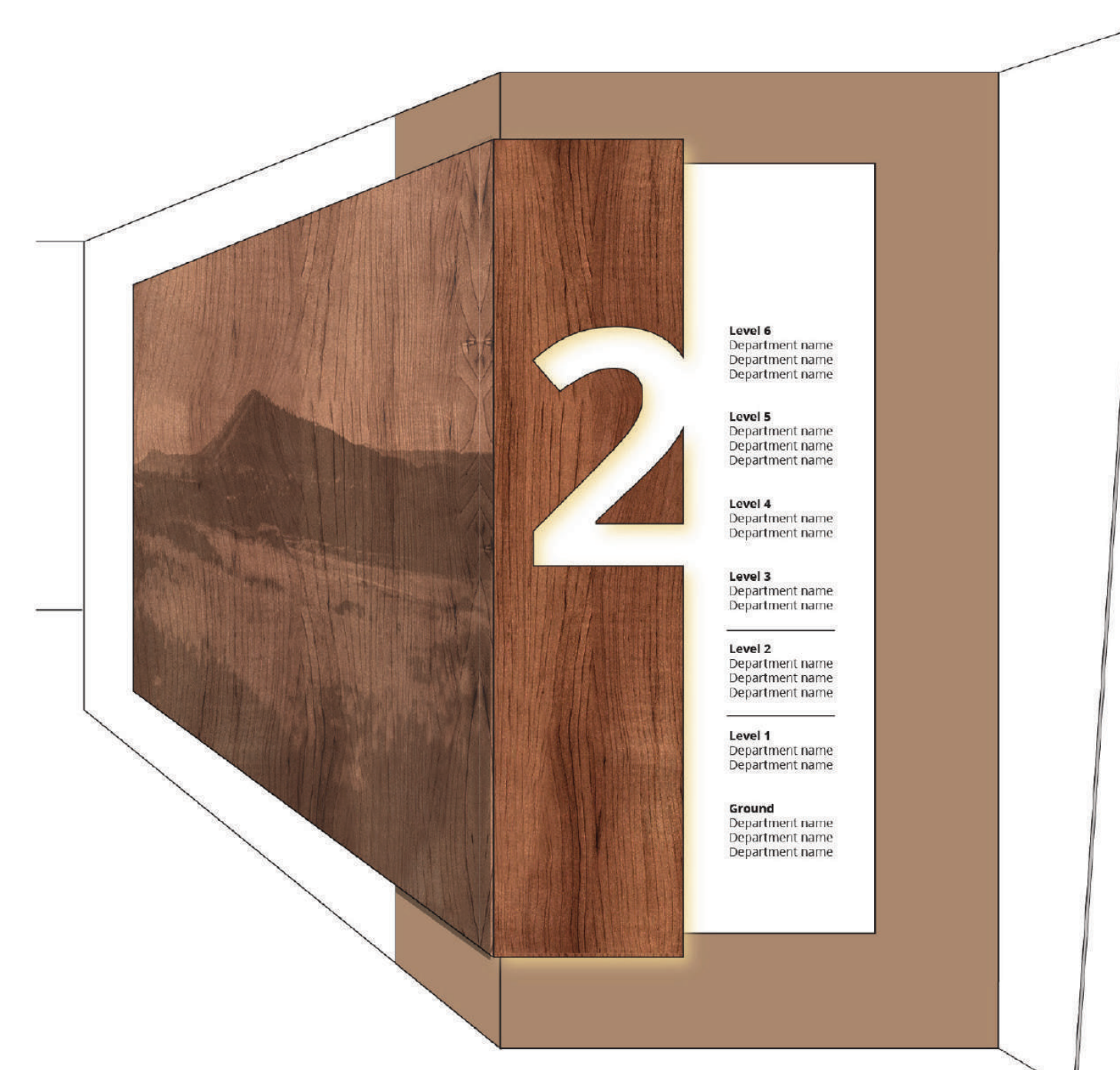
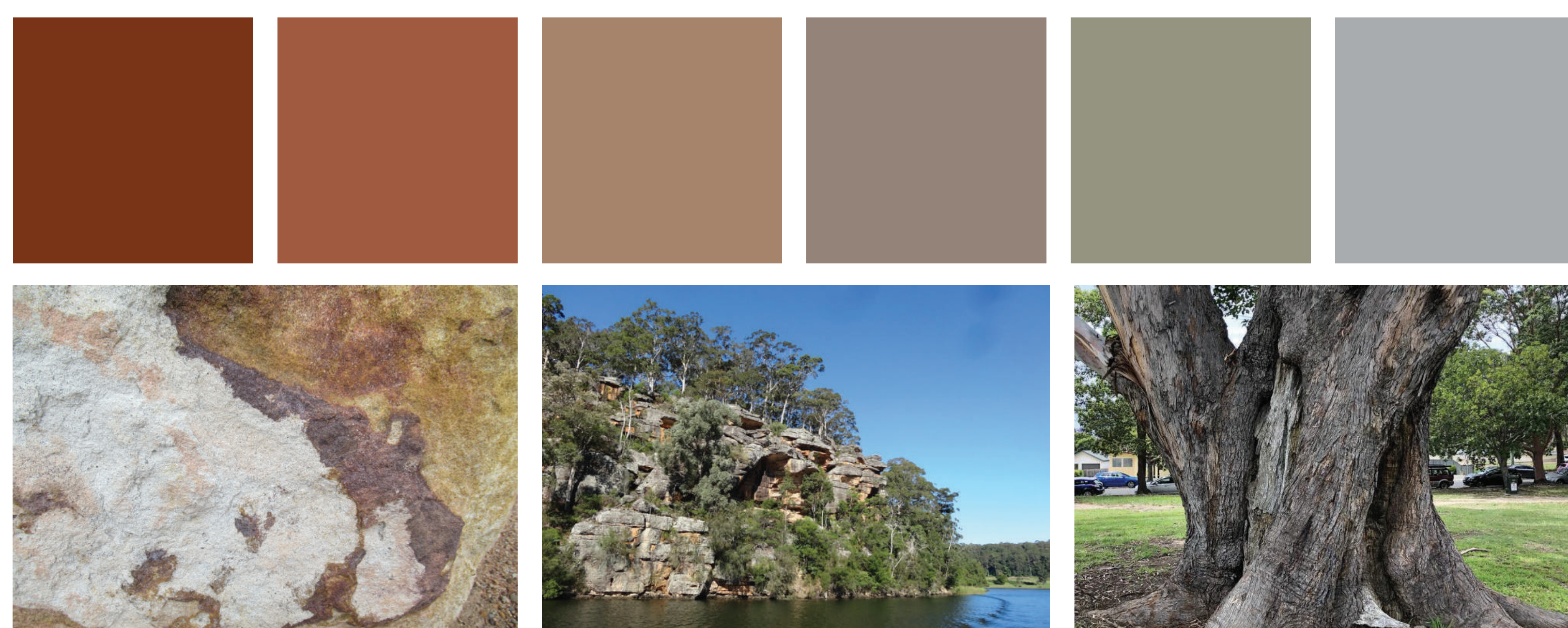
## Design

Interior spaces, colours, materials and furniture selected for health care facilities can support patients, their families, carers and visitors' wellbeing by providing:

- Memorable spaces to assist with wayfinding
- Natural, light-filled and life affirming spaces with a strong connection to the surrounding environment
- Integrating elements of the natural world through windows, materials, colours and textures
- Spaces that relate to the local Shoalhaven context
- Inclusion of local elements such as artworks, place names, historical and cultural items
- Access to outdoor gathering areas (Nowra Park, cafe, forecourts)
- Integration of current artwork co-ordinated with new concepts and wayfinding.

## Interior concept

The interior colour palette takes inspiration from the local rock formations within the area, as well as the local flora, river and sky.



For more information visit:  
**shoalhavenredevelopment.  
health.nsw.gov.au**





## Contact Details

Health Infrastructure  
Locked Bag 2030  
St Leonards NSW 1590  
[hinfra.health.nsw.gov.au](http://hinfra.health.nsw.gov.au)