

Shoalhaven Hospital

Landscape SSDA Report

July 2022



SITE IMAGE
Landscape Architects

Contents

003	Introduction Design Vision & Principles
004	Landscape Masterplan and Setting
005	Connecting with Country and Design Jam Inputs
006	Forecourt
007	Forecourt Planting Palette
008	Central Drop off & Raingarden
009	Central Drop off & Raingarden Section
010	Raingarden Planting Palette
011	Ceremony Space
012	Ceremony Space Planting Palette
013	Open Space
014	Open Space Planting Palette
015	Play Area
016	Shoalhaven Street Drop Off
017	Level 3 ICU & Staff Courtyard
018	Level 4 Mental Health
019	Level 4 Mental Health Planting Palette
020	Level 4 Geriatric and Staff Courtyards
021	Level 4 Geriatric Courtyards Planting Palette
022	Level 4 Staff Courtyards Planting Palette
023	Level 6 Aboriginal Family
024	Proposed Tree Planting
025	Tree Canopy
026	Materials Strategy
027	SEARs Responses
028	Greener Places and Better Places Landscape Response

Introduction

This SSDA report has been prepared to document the proposed landscape design associated with the new Shoalhaven Hospital Redevelopment.

This report is intended to be read in conjunction with supporting consultants reports including but not limited to architectural, civil and arboricultural reports.

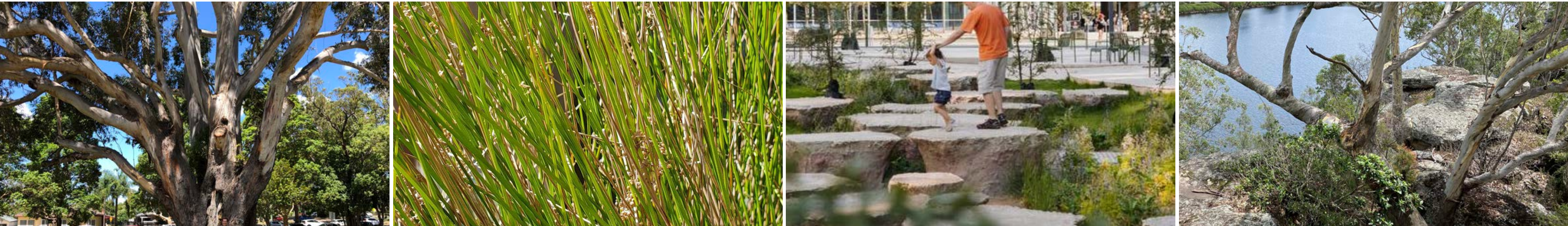
The landscape scope of the project includes ground floor peripheral landscape areas to Shoalhaven Street, existing hospital interfaces, the south eastern open space and courtyards between level 2 and level 6.

Design Vision and Principles

The landscape vision for the Shoalhaven project is to provide external spaces and a landscape setting which complement for the use of staff, clients and their visitors. The landscape serving a variety of functions; an outlook for the building, clinical spaces for the use of clients and staff which play a function healing and treatment and peripheral areas that open to the broader community and health precinct.

At the forefront of the landscape design are the following principles

- **Connection to Country** incorporation of indigenous knowledge and stories; reinforcing a hospital in the landscape
- **Community Facing** well functioning, welcoming & equitable spaces
- **Care for Country** care for the natural environment and systems through ESD initiatives
- **meeting health and clinical needs** of the users, staff and community



Landscape Masterplan & Setting

The site is located in within the existing Shoalhaven Hospital Campus in close proximity to the Shoalhaven River. Site frontages include North Street and Shoalhaven Street.

The site has a number of existing buildings with the majority being open grassland falling towards the eastern boundary.

A number of existing trees are located across the site with groups to the eastern and southern boundaries. Of note is a significant Blackbutt tree provides a centrepiece for the open space these are further described in the arborist report.



Connecting with Country and Design Jam Inputs

The landscape design has been developed as a co-design process with local first nations community members. Through design jams and ongoing input, a number of key themes and objectives have been established-

- The importance of the Shoalhaven River as a meeting place and food source
- The existing Blackbutt tree has informed the design to create it as a focal point for the broader open space. The tree is symbolic of a meeting place and wisdom.
- Views to Cullunghitti and the surrounding landscape
- Providing access to the outdoors and Country through well designed external spaces which provide users opportunities to connect to views across the landscape, see the sky and take in the elements within the care and confines of the ASB building
- Ceremonial space which provides welcoming area catering for cultural and social occasions
- The landscape design should aid creating a more welcoming and less institutionalized feel, encouraging engagement with the hospital and its services.
- Use of locally indigenous and bush tucker medicinal planting with educational signage



Local bush foods and medicinal species



Broader site wayfinding and connection to masterplan



District views



Shoalhaven River



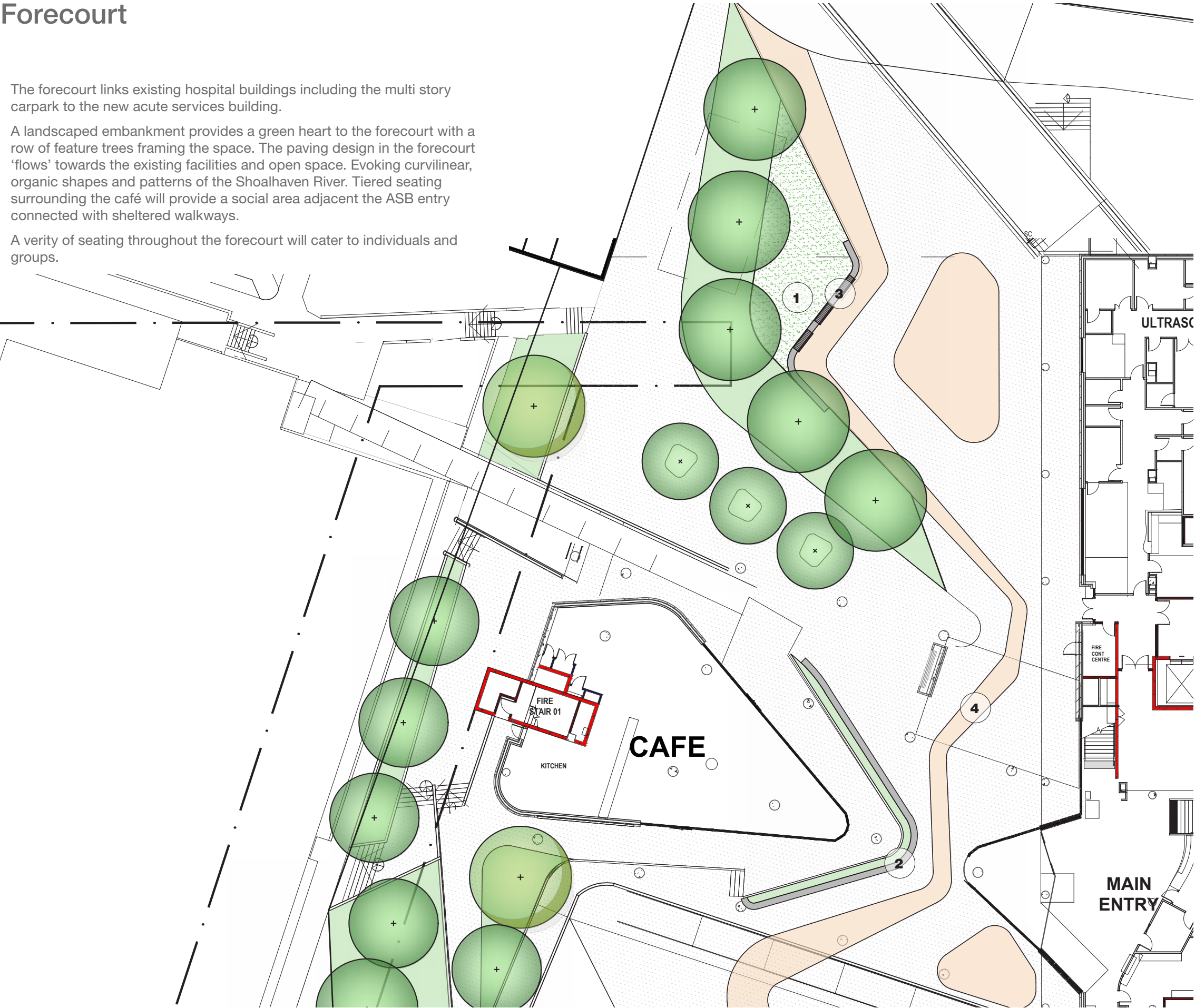
Blackbutt Tree

Forecourt

The forecourt links existing hospital buildings including the multi story carpark to the new acute services building.

A landscaped embankment provides a green heart to the forecourt with a row of feature trees framing the space. The paving design in the forecourt 'flows' towards the existing facilities and open space. Evoking curvilinear, organic shapes and patterns of the Shoalhaven River. Tiered seating surrounding the café will provide a social area adjacent the ASB entry connected with sheltered walkways.

A verity of seating throughout the forecourt will cater to individuals and groups.



1 Green heart with planting and seating edge



2 Tiered access and seating to cafe



3 Bench seating



4 Paving forms to represent river

Forecourt Planting Palette

- Feature tree planting
- Massed embankment grasses and groundcovers

Botanic Name	Common Name	Mature Size m (h x w)	Pot Size	Density
<i>Brachychiton populneus</i>	Kurrajong Tree	10 x 6	100L	As Shown
<i>Brachychiton acerifolius</i>	Illawarra flame tree	15 x 8	100L	As Shown
<i>Banksia integrifolia</i>	Coast Banksia	15 x 5	100L	As Shown
<i>Tristaniopsis laurina</i> 'Luscious'	Water Gum	8 x 4	75L	As Shown
<i>Melaleuca linariifolia</i>	Snow in Summer	8 x 5	100L	As Shown
<i>Xanthorrhoea glauca</i>	Grass Tree	1 x 1	1.5m trunk	As Shown
<i>Banksia ericifolia</i>	Heath Banksia	5.0 x 2	150mm	As Shown
<i>Alpinia nutans</i>	Dwarf Cardamom	1.5 x 1	300mm	As Shown
<i>Baeckea imbricata</i>	Heath Myrtle	0.8 x 1	300mm	As Shown
<i>Callistemon</i> 'Little John'	Bottlebrush Little John	1.5 x 1.5	300mm	As Shown
<i>Callistemon</i> Great Balls of Fire	Bottlebrush	1.75 x 1.75	300mm	As Shown
<i>Doryanthes excelsa</i>	Gynea Lily	2 x 2	300mm	As Shown
<i>Metrosideros collina</i> 'Tahiti'	Dwarf NZ Christmas Bush	1 x 1	300mm	As Shown
<i>Melaleuca hypericifolia</i>	Hillock Bush	1.5 x 1.5	150mm	As Shown
<i>Melaleuca linarifolia</i> 'Claret Tops'	Honey Myrtle	1.4 x 1.0	200mm	As Shown
<i>Leptospermum laevigatum</i> Foreshore	Dwarf Coastal Tea Tree	0.5 x 1	300mm	As Shown
<i>Arthropodium cirratum</i>	Renga Lily	.6 x .6	150mm	5/m2
<i>Anigozanthus cultivars</i>	Kangaroo Paw	.4 x .6	150mm	5/m2
<i>Austrostipa stipoides</i>	Coastal Spear Grass	0.8 x 0.8	150mm	5/m2
<i>Carpobotus glaucescens</i>	Pigface	0.3 x 2	150mm	5/m2
<i>Dianella caerulea</i>	Blue Flax Lily	0.6 x 0.3	150mm	5/m2
<i>Dichondra repens</i>	Kidney Weed	.1 x 1.5	150mm	5/m2
<i>Dichondra</i> 'Silver Falls'		.1 x 1.5	150mm	5/m2



Banksia integrifolia



Melaleuca linariifolia



Tristaniopsis laurina
'Luscious'



Leptospermum laevigatum
'Foreshore'



Melaleuca linarifolia 'Claret
Tops'



Carpobotus glaucescens



Brachychiton acerifolius



Baeckea imbricata

Central Drop Off and Raingarden

The central drop off provides access to the emergency entry to the site accessed from North Street. Within the central drop off island is an infiltration basin. The system is designed as a landscape feature, this directs water from hardstand into vegetated infiltration beds. Macrophyte planting within the basin will assist allowing for biofiltration of water and improvement of water quality complemented by feature boulders and hardscape elements. The stormwater infiltration system further embellishes the representation of the river while functionally allowing for the onsite capture of water contributing to overall health of the river and local waterbodies. Pathways and seating either side of the raingarden provides a space for users to site amongst vegetation within close proximity to the emergency department and entry.

Located in a prominent position along the entry drive and at the drop off area seating adjacent these landscaped infiltration beds will showcase this water sensitive feature to users.



1 Tree planting to provide shade to hardstand



2 Infiltration bed with native grasses



3 Pedestrian dropoff and pickup



4 Boardwalk with seating

Central Drop Off and Raingarden



Raingarden Planting Palette

- Native macrophyte and riparian species
- Tree planting with clear understory for sightlines

Botanic Name	Common Name	Mature Size m (h x w)	Pot Size	Density
<i>Banksia integrifolia</i>	Coast Banksia	15 x 5	100L	As Shown
<i>Tristaniopsis laurina</i> 'Luscious'	Water Gum	8 x 4	75L	As Shown
<i>Melaleuca linariifolia</i>	Snow in Summer	8 x 5	100L	As Shown
<i>Banksia ericifolia</i>	Heath Banksia	5.0 x 2	150mm	As Shown
<i>Baeckea imbricata</i>	Heath Myrtle	0.8 x 1	300mm	As Shown
<i>Doryanthes excelsa</i>	Gynea Lily	2 x 2	300mm	As Shown
<i>Dodonea viscosa</i>	Hop Bush	1 x 1	200mm	As Shown
<i>Melaleuca thymifolia</i>	Rosy Paperbark	1.5 x 1	200mm	As Shown
<i>Melaleuca hypericifolia</i>	Hillock Bush	1.5 x 1.5	150mm	As Shown
<i>Leptospermum laevigatum</i> Foreshore	Dwarf Coastal Tea Tree	0.5 x 1	300mm	As Shown
<i>Leptospermum petersonii</i> 'Little Lemon Scents'		1.5 x 1.5	200mm	As Shown
<i>Westringia fruticosa</i> 'Blue Gem'	Blue Gem	1.5 x 1.3	300mm	As shown
<i>Westringia fruticosa</i> 'Mundi'	Coastal Rosemary	0.5 x 1.5	300mm	As shown
<i>Austrostipa stipoides</i>	Coastal Spear Grass	0.8 x 0.8	150mm	
<i>Blechnum indicum</i>	Swamp Water Fern			
<i>Carpobotus glaucescens</i>	Pigface	0.3 x 2	150mm	
<i>Centipeda cunninghamii</i>	Old Mans Weed			
<i>Dianella caerulea</i>	Blue Flax Lily	0.6 x 0.3	150mm	
<i>Dichondra repens</i>	Kidney Weed	.1 x 1.5	150mm	
<i>Hibbertia scandens</i>	Guinea Flower	.1 x .2	150mm	8/m2
<i>Ficinia nodosa</i>	Knobbly Club Rush	.4 x 1	8/sqm	
<i>Juncus kraussii subsp. Australiensis</i>	Salt marsh Rush			
<i>Juncus planifolius</i>	Broadleaf Rush			
<i>Juncus usitatus</i>	Common rush			
<i>Lomandra longifolia</i>	Spiny- head mat- rush			
<i>Isolepis inundata</i>	Swamp club- rush			



Poa labillardieri



Ficinia nodosa



Austrostipa stipoides



Juncus kraussii subsp. Australiensis



Dichondra repens



Juncus usitatus



Dianella caerulea



Lomandra 'Crackerjack'

Ceremony Space

The ceremony space has been located as to be easily accessible for all users from the drop off area and ASB entry. This provides a welcoming area catering for cultural and social occasions as well as informal park like seating when not in use with a range of furniture, natural elements and sculptural ceremonial features.

The ceremony space is oriented towards the Blackbutt tree celebrating this significant landscape marker. Buffer planting sheltered the space from driveway traffic with surrounding canopy tree planting to provide shade.



1 Open space for gathering & ceremony



2 Seating for different size groups



3 Feature tree



4 Native buffer planting to ambulance bay

Ceremony Space Planting Palette

- Locally significant species
- Species for use in ceremony

Botanic Name	Common Name	Mature Size m (h x w)	Pot Size	Density
<i>Brachychiton populneus</i>	Kurrajong Tree	10 x 6	100L	As Shown
<i>Brachychiton acerifolius</i>	Illawarra flame tree	15 x 8	100L	As Shown
<i>Banksia integrifolia</i>	Coast Banksia	15 x 5	100L	As Shown
<i>Eucalyptus robusta</i>	Swamp Mahogany	20 x 15	100L	As Shown
<i>Eucalyptus saligna</i>	Sydney Blue Gum	20 x 10	75L	As Shown
<i>Melaleuca linariifolia</i>	Snow in Summer	8 x 5	100L	As Shown
<i>Xanthorrhoea glauca</i>	Grass Tree	1 x 1	1.5m trunk	As Shown
<i>Banksia ericifolia</i>	Heath Banksia	5.0 x 2	150mm	As Shown
<i>Baeckea imbricata</i>	Heath Myrtle	0.8 x 1	300mm	As Shown
<i>Banksia spinulosa</i>	Hills Banksia	3 x 2	300mm	As Shown
<i>Doryanthes excelsa</i>	Gynea Lily	2 x 2	300mm	As Shown
<i>Monotoca elliptica</i>	Tree Broom Heath	2 x 3	300mm	As Shown
<i>Melaleuca ericifolia</i>	Swamp paperbark	3.0 x 2.0	150mm	As Shown
<i>Westringia fruticosa</i> 'Grey box'	Grey Box	0.5 x 0.5	300mm	As shown
<i>Anigozanthus cultivars</i>	Kangaroo Paw	.4 x .6	150mm	5/m2
<i>Carpobotus glaucescens</i>	Pigface	0.3 x 2	150mm	5/m2
<i>Casuarina glauca</i> 'Kattang Karpet'	Prostrate She Oak	.5 x 2	150mm	5/m2
<i>Chrysocephalum apiculatum</i>	Common Everlasting	2 x 1	150mm	5/m2
<i>Dianella caerulea</i>	Blue Flax Lily	0.6 x 0.3	150mm	5/m2
<i>Dichondra repens</i>	Kidney Weed	.1 x 1.5	150mm	5/m2
<i>Grevillea lanigera</i>	Woolly Grevillea	0.8 x 0.8	150mm	5/m2
<i>Hardenbergia</i> 'Meema'	Coral Pea	0.5 x 1.0	150mm	5/m2
<i>Hibbertia scandens</i>	Guinea Flower	.1 x .2	150mm	5/m2
<i>Lomandra 'Hystrix'</i>	Tropic Cascade	0.7 x 0.7	150mm	5/m2
<i>Myoporum parvifolium</i>	Yareena	0.1 x 1.0	150mm	5/m2
<i>Poa poiformis</i>	Blue Tussock Grass	0.6 x 0.5	150mm	5/m2
<i>Viola hederacea</i>	Native Violet	.1 x .5	150mm	5/m2



Brachychiton populneus



Eucalyptus saligna



Doryanthes excelsa



Banksia spinulosa



Baeckea imbricata



Melaleuca ericifolia



Casuarina glauca 'Kattang
Karpet'



Hibbertia scandens

Open Space

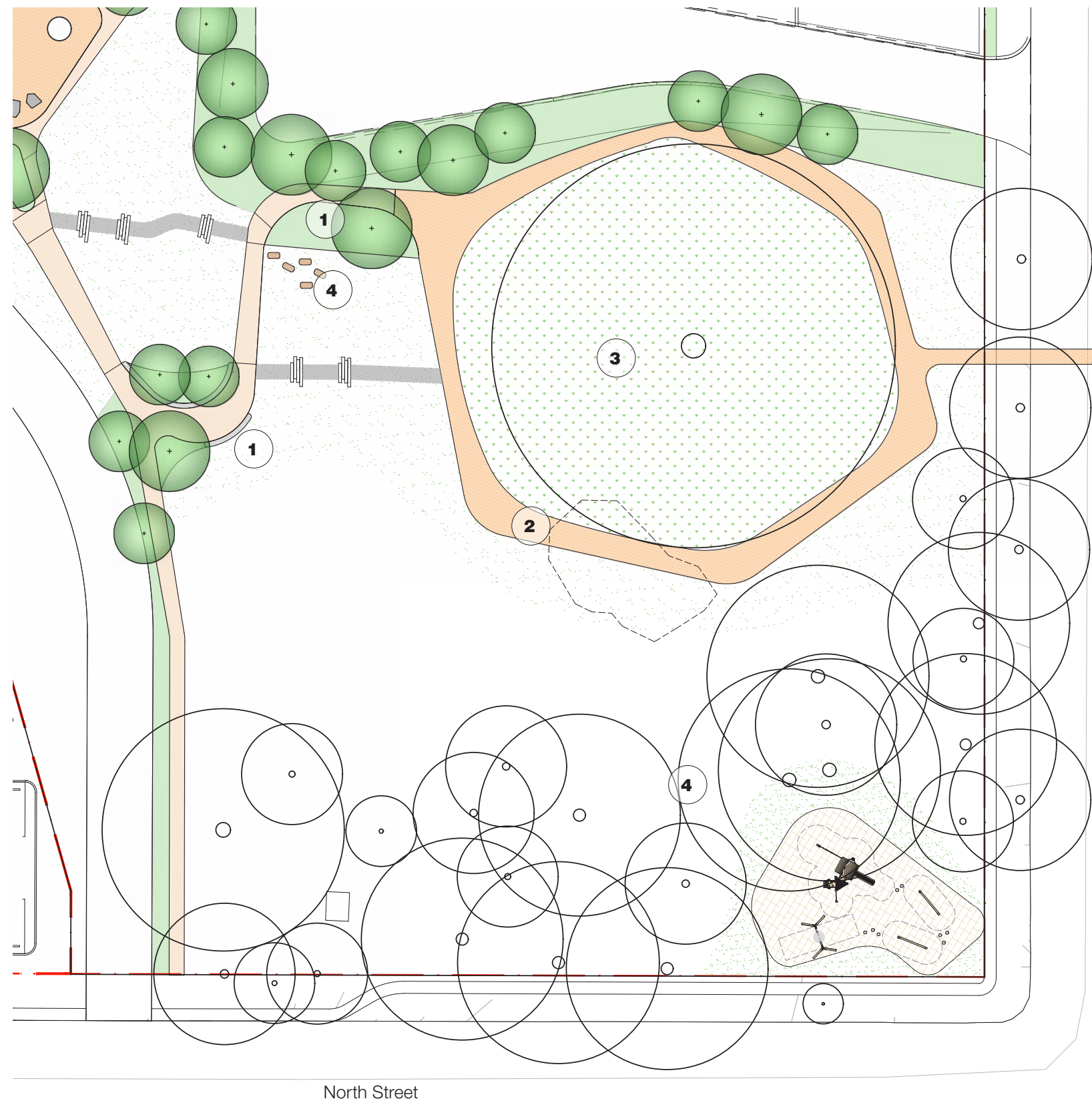
The open space in the south east corner of the site.

Accessible pathways provide access between the open space, Shoalhaven Street and forecourt meandering up the slope with seating and gardens providing a space for respite.

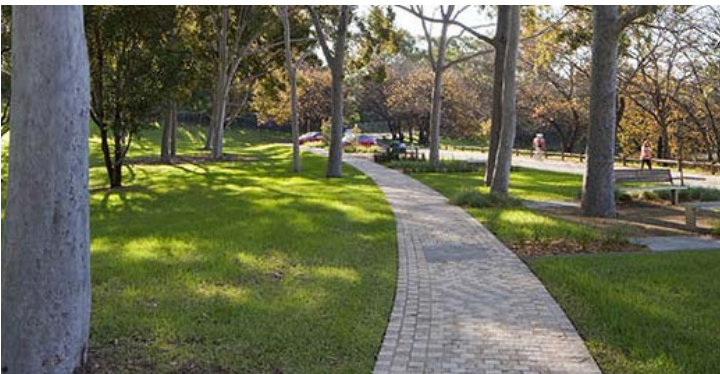
The central feature is the exiting Blackbutt tree with sensitive pathways surrounding providing opportunities to encounter the tree while prioritizing its ongoing health above all else.

Investigation is being undertaken into the collection of seed from the tree for future propagation and planting ensuing an ongoing legacy and connection to this significant specimen enjoyed by future generations.

Opportunities for play are being developed which would provide a welcoming facility to the broader community, sculptural play elements symbolic of local totems to be incorporated into the open space potentially using recycled timber from site.



1 Seating and gardens along pathway



2 Sensitive path construction under existing tree canopy



3 Existing Tree with understory grass planting



4 Sculptural play elements

Open Space Planting Palette

- Low maintenance
- Seasonal interest
- Native species

Botanic Name	Common Name	Mature Size m (h x w)	Pot Size	Density
<i>Brachychiton populneus</i>	Kurrajong Tree	10 x 6	100L	As Shown
<i>Banksia integrifolia</i>	Coast Banksia	15 x 5	100L	As Shown
<i>Backhousia myrtifolia</i>	Cinnamon Myrtle	3 x 2	75L	As Shown
<i>Eucalyptus robusta</i>	Swamp Mahogany	20 x 15	100L	As Shown
<i>Eucalyptus saligna</i>	Sydney Blue Gum	20 x 10	75L	As Shown
<i>Tristaniopsis laurina</i> 'Luscious'	Water Gum	8 x 4	75L	As Shown
<i>Melaleuca linariifolia</i>	Snow in Summer	8 x 5	100L	As Shown
<i>Banksia ericifolia</i>	Heath Banksia	5.0 x 2	150mm	As Shown
<i>Baeckea imbricata</i>	Heath Myrtle	0.8 x 1	300mm	As Shown
<i>Banksia spinulosa</i>	Hills Banksia	3 x 2	300mm	As Shown
<i>Callistemon Great Balls of Fire</i>	Bottlebrush	1.75 x 1.75	300mm	As Shown
<i>Correa alba</i>	Native Fuchsia	1.5 x 1.5	300mm	As Shown
<i>Correa</i> 'Dusky Bells'	Native Fuchsia	.5 x 1	300mm	As Shown
<i>Doryanthes excelsa</i>	GyMEA Lily	2 x 2	300mm	As Shown
<i>Melaleuca ericifolia</i>	Swamp paperbark	3.0 x 2.0	150mm	As Shown
<i>Melaleuca hypericifolia</i>	Hillock Bush	1.5 x 1.5	150mm	As Shown
<i>Melaleuca linarifolia</i> 'Claret Tops'	Honey Myrtle	1.4 x 1.0	200mm	As Shown
<i>Anigozanthus cultivars</i>	Kangaroo Paw	.4 x .6	150mm	5/m2
<i>Carpobotus glaucescens</i>	Pigface	0.3 x 2	150mm	5/m2
<i>Casuarina glauca</i> 'Kattang Carpet'	Prostrate She Oak	.5 x 2	150mm	5/m2
<i>Convolvulus cneorum</i>	Silver Bush	0.6 x 0.6	150mm	5/m2
<i>Correa</i> 'Dusky Bells'	Correa	0.7 x 1.0	150mm	5/m2
<i>Dianella caerulea</i>	Blue Flax Lily	0.6 x 0.3	150mm	5/m2
<i>Dichondra repens</i>	Kidney Weed	.1 x 1.5	150mm	5/m2
<i>Grevillea</i> 'Poorinda Royal Mantle'	Grevillea	0.1 x 3	150mm	5/m2
<i>Grevillea lanigera</i>	Woolly Grevillea	0.8 x 0.8	150mm	5/m2
<i>Hardenbergia</i> 'Meema'	Coral Pea	0.5 x 1.0	150mm	5/m2
<i>Helichrysum petiolare</i>	Licorice Plant	.4 x 1.5	150mm	5/m2



Backhousia myrtifolia



Correa alba



Banksia ericifolia



Melaleuca hypericifolia



Anigozanthus cultivars



Convolvulus cneorum



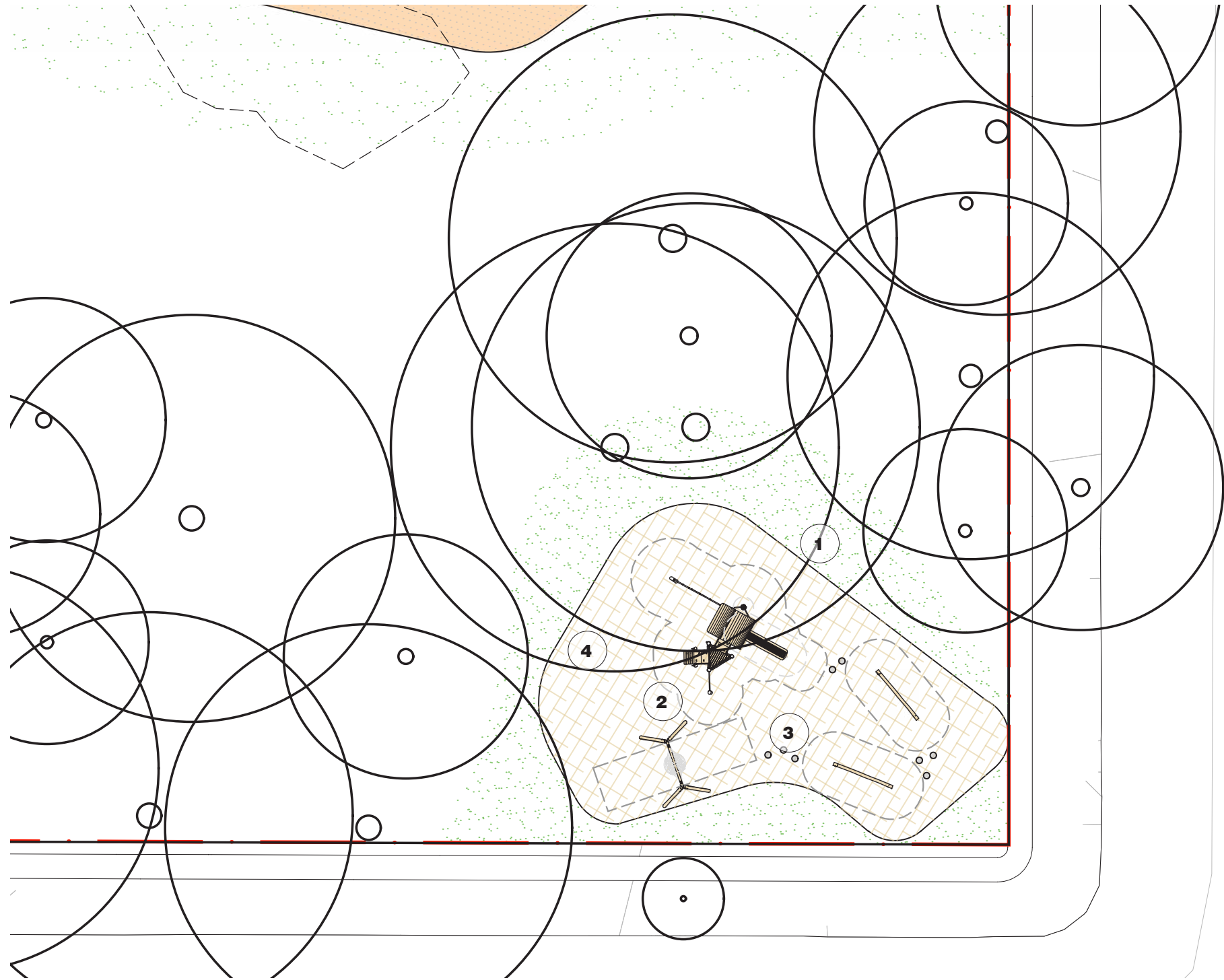
Grevillea lanigera



Helichrysum petiolare

Play Area

Opportunities for play are being developed which would provide a welcoming facility to the broader community, sculptural play elements symbolic of local totems to be incorporated into the open space potentially using recycled timber from site.



1 Coordination with existing tree canopy and protection zones



2 Natural play elements



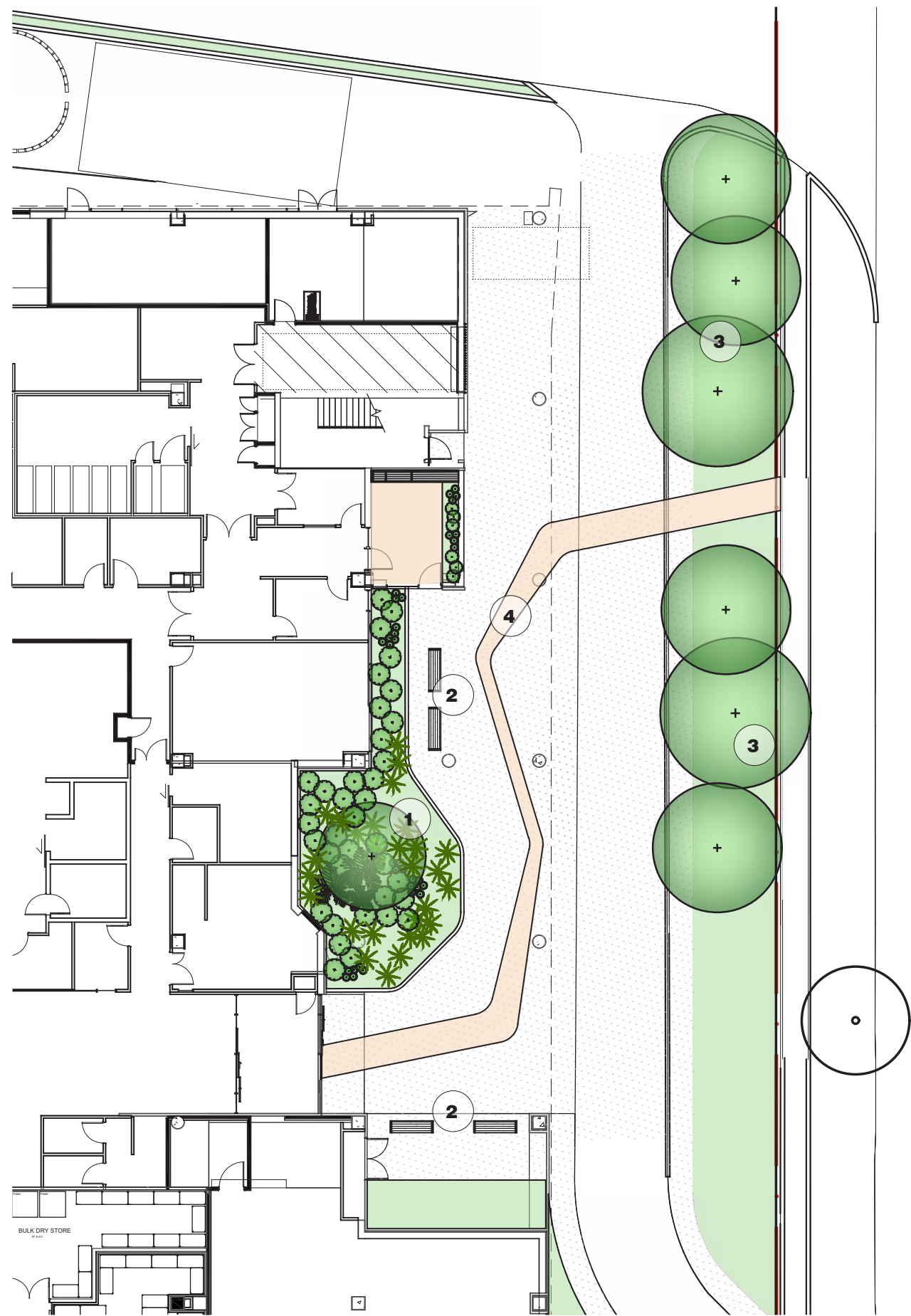
3 Natural seating elements



4 Recycled timber sculpture

Shoalhaven Street Drop Off

A Shoalhaven Street drop off serves as the primary street address. A paved shared space leads users to the entry. The pathway flanked by softscape with a variety of texture and colour to provide a welcoming entrance. Seating will provide a place for rest and waiting for drop off and pick up. A vegetative buffer with shelters the drop off contributing to the existing streetscape planting within the buffer will consist of canopy tree planting with a low understory to ensure sightlines around vehicles are maintained and CPTED principles observed.



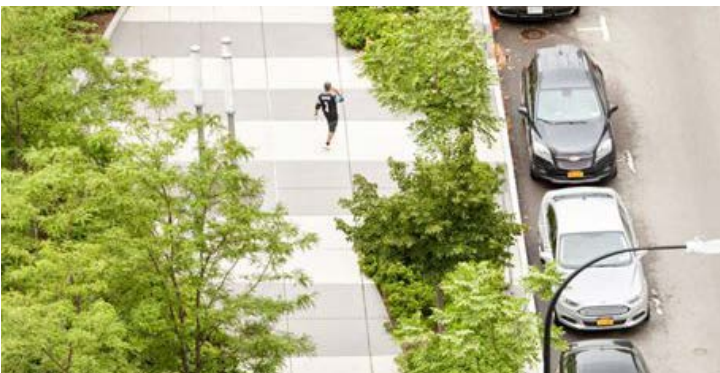
1 buffer planting to building edge



2 Seating for rest and waiting



3 Street Front presentation planting



4 River pattern to paving

ICU and Staff Courtyard | Level 3

The level 3 ICU provides an outdoor space for the use of visitors.

An open area allows a space for respite outdoors and furniture.

Planting along the building edge softens the space and connects users with plants and nature.

An adjacent staff courtyard provides a place for staff to sit outdoors.

Botanic Name	Common Name	Mature Size m (h x w)	Pot Size	Density
<i>Alpinia nutans</i>	Dwarf Cardamom	1.5 x 1	300mm	As Shown
<i>Asplenium australasicum</i>	Birds Nest Fern	1 x 1	300mm	As Shown
<i>Blechnum</i> 'Silver Lady'	Silver Lady Fern	1.2 x 1	300mm	As shown
<i>Arthopodium cirratum</i>	Renga Lily	.6 x .6	150mm	5/m2
<i>Dichondra</i> 'Silver Falls'		.1 x 1.5	150mm	5/m2
<i>Dichondra repens</i>	Kidney Weed	.1 x 1.5	150mm	5/m2
<i>Libertia paniculata</i> 'Shadow Star'	Grass Flag	.5 x .5	150mm	5/m2
<i>Viola hederacea</i>	Native Violet	.1 x .5	150mm	5/m2



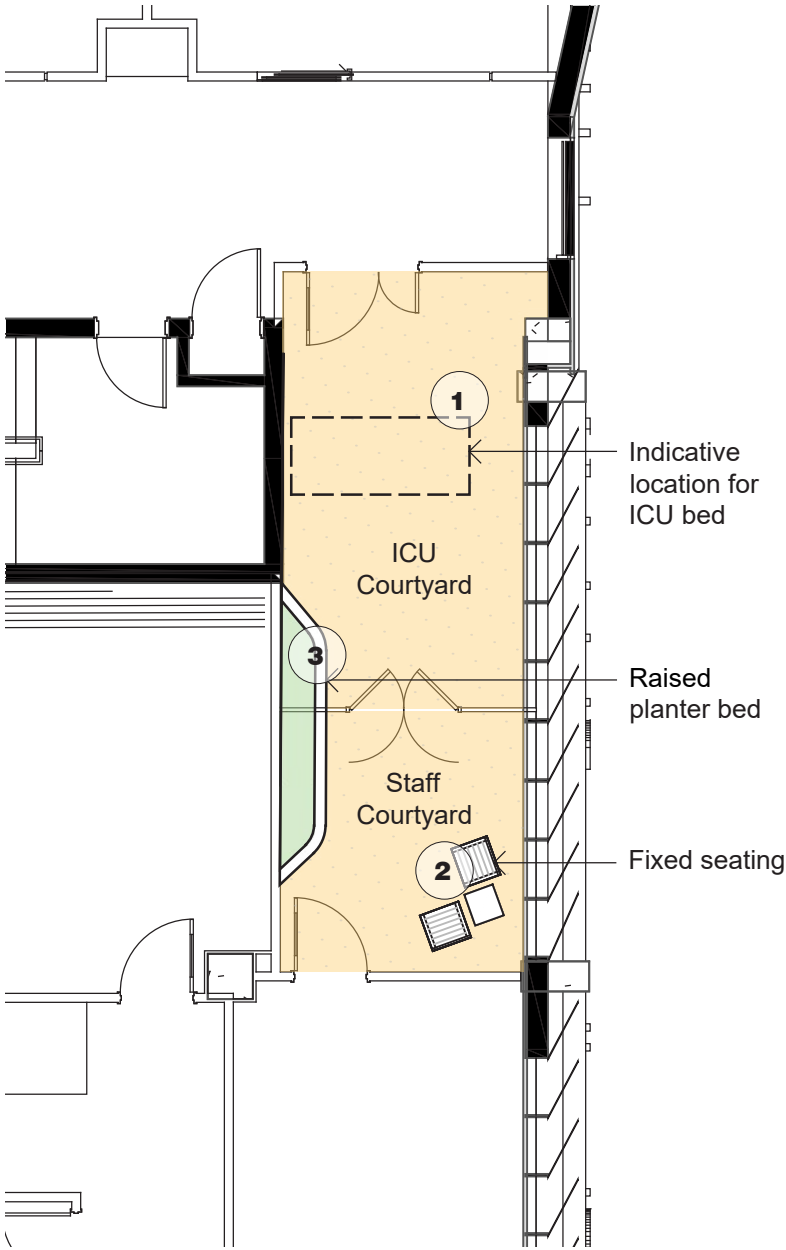
Alpinia nutans



Viola hederacea



Blechnum 'Silver Lady'



1 Linear raised planter bed to building edge



2 Fixed seating



3 Shade tolerant planting



4 Concrete paving

Mental Health | Level 4

The level 4 mental health courtyard provides users and outdoor space for sitting and activities.

Feature raised planters with seating surrounds can be used for horticultural therapy and a place to sit and observe. Further individual seats cater for both groups and individuals using this space as part of a formal program or informally in recreation time.

The inclusion of natural materials and potentially water will reflect local natural features. Planting will feature a range of sensory species.



1 Raised planter beds with seating edges



2 Fixed dining seating



3 Water



4 Paving inlays

Mental Health | Level 4 Planting Palette

- Feature locally significant native food and medicinal species
- Include sensory planting
- non toxic, non allergenic species
- shade tolerant within courtyards

Botanic Name	Common Name	Mature Size m (h x w)	Pot Size	Density
<i>Alpinia nutans</i>	Dwarf Cardamom	1.5 x 1	300mm	As Shown
<i>Correa 'Dusky Bells'</i>	Correa	0.7 x 1.0	150mm	5/m2
<i>Syzygium 'Cascade'</i>	Lily Pilly	1 x 1	300mm	As shown
<i>Westringia fruticosa 'Grey Box'</i>	Grey Box	0.5 x 0.5	300mm	As shown
<i>Melaleuca linarifolia 'Claret Tops'</i>	Honey Myrtle	1.4 x 1.0	200mm	As Shown
<i>Asplenium australasicum</i>	Birds Nest Fern	1 x 1	300mm	As Shown
<i>Blechnum 'Silver Lady'</i>	Silver Lady Fern	1.2 x 1	300mm	As shown
<i>Adiantum aethiopicum</i>	Common Maidenhair Fern	.2 x .4	200mm	As Shown
<i>Arthopodium cirratum</i>	Renga Lily	.6 x .6	150mm	5/m2
<i>Casuarina glauca 'Kattang Carpet'</i>	Prostrate She Oak	.5 x 2	150mm	5/m2
<i>Dichondra 'Silver Falls'</i>		.1 x 1.5	150mm	5/m2
<i>Dichondra repens</i>	Kidney Weed	.1 x 1.5	150mm	5/m2
<i>Hardenbergia 'Meema'</i>	Coral Pea	0.5 x 1.0	150mm	5/m2
<i>Lomandra 'Hystrix'</i>	Tropic Cascade	0.7 x 0.7	150mm	5/m2
<i>Libertia paniculata 'Shadow Star'</i>	Grass Flag	.5 x .5	150mm	5/m2
<i>Themeda 'Blue Mingo'</i>	Blue Kangaroo Grass	.4 x .4	150mm	5/m2
<i>Xerochrysum 'Wallaby Yellow'</i>	Everlasting Daisy	.4 x .5	150mm	5/m2
<i>Viola hederacea</i>	Native Violet	.1 x .5	150mm	5/m2



Alpinia nutans



Blechnum 'Silver Lady'



Syzygium 'Cascade'



Correa 'Dusky Bells'



Adiantum aethiopicum



Asplenium australasicum



Westringia fruticosa 'Grey Box'

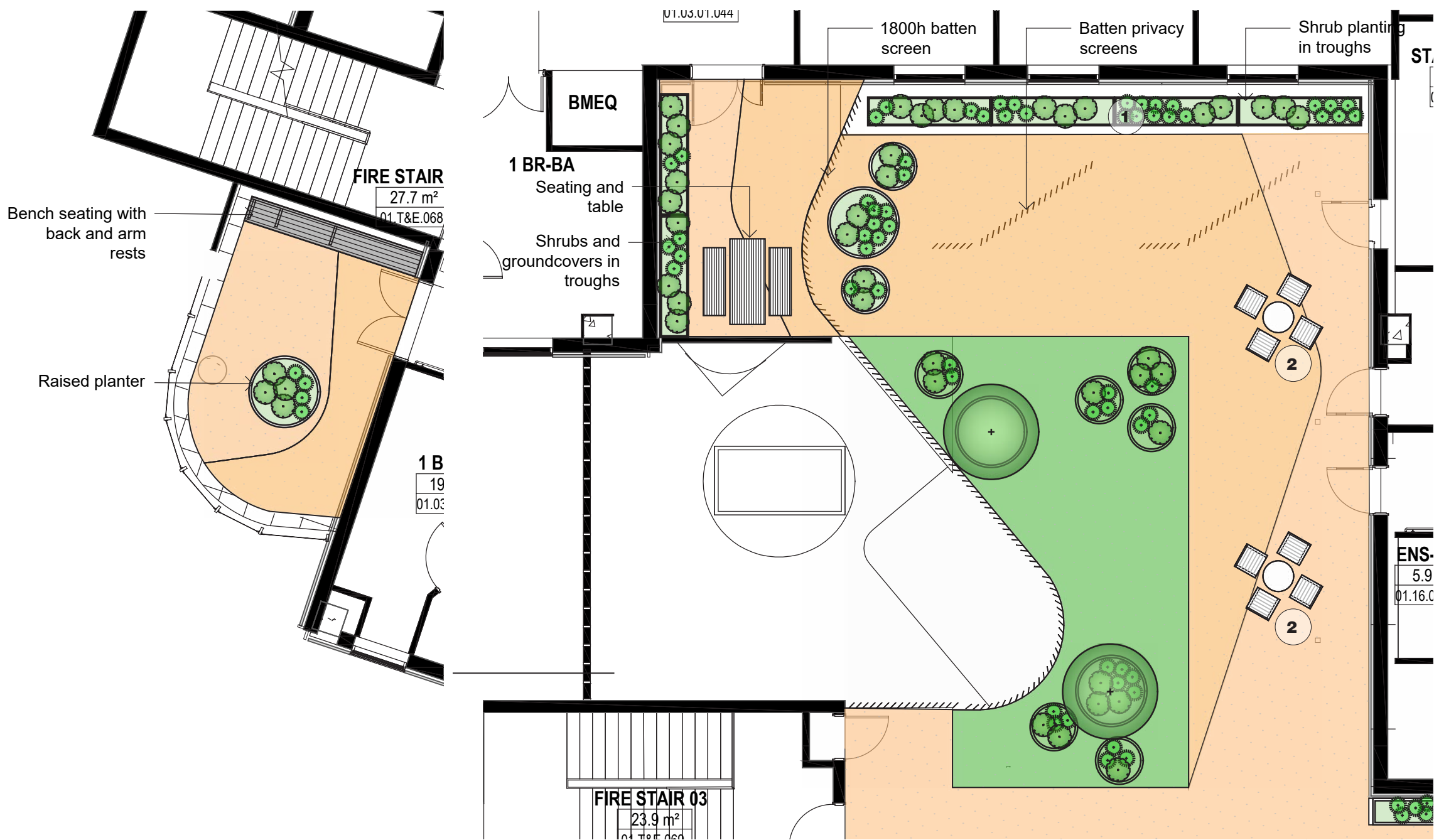


Hardenbergia 'Meema'

Geriatric & Staff Courtyards | Level 4

The level 4 geriatric courtyards allow users a space to safely and easily spend time outdoors. Courtyards will provide seating and raised garden beds. Flexible open areas allow for furniture and different activities to take place.

A staff courtyard provides a private area for staff rest and respite featuring a range of seating and planting.



1 buffer planting to building edge



2 Fixed dining seating



3 Bench seating fixed to planter



4 Raised garden bed

Geriatric Courtyards | Level 4

- Limited light
- Native and exotic species
- Sensory species

Botanic Name	Common Name	Mature Size m (h x w)	Pot Size	Density
<i>Arthropodium cirratum</i>	Renga Lily	.6 x .6	150mm	5/m2
<i>Carpobotus glaucescens</i>	Pigface	0.3 x 2	150mm	5/m2
<i>Dianella caerulea</i>	Blue Flax Lily	0.6 x 0.3	150mm	5/m2
<i>Dichondra repens</i>	Kidney Weed	.1 x 1.5	150mm	5/m2
<i>Dichondra 'Silver Falls'</i>		.1 x 1.5	150mm	5/m2
<i>Hardenbergia 'Meema'</i>	Coral Pea	0.5 x 1.0	150mm	5/m2
<i>Brachyscome multifida</i>	Cut Leaved Daisy	.2 x .5	150mm	As Shown
<i>Cissus antarctica</i>	Kangaroo Vine	.1 x 1	150mm	
<i>Viola hederacea</i>	Native Violet	.1 x 1	150mm	
<i>Syzygium australe 'Resilience'</i>	Lilly Pilly	2 x 3	300mm	
<i>Westringa 'Wynyabbie Gem'</i>	Native Rosemary	1 x 1	300mm	



Hardenbergia 'Meema'



Dianella caerulea



Arthropodium cirratum



Dichondra repens



Carpobotus glaucescens

Staff Courtyard | Level 4

- Planting in pots
- South side of building
- Seasonal colour and interest

Botanic Name	Common Name	Mature Size m (h x w)	Pot Size	Density
<i>Banksia integrifolia</i>	Coast Banskia	15 x 5	100L	As Shown
<i>Tristaniopsis laurina</i> 'Luscious'	Water Gum	8 x 4	75L	As Shown
<i>Xanthorrhoea glauca</i>	Grass Tree	1 x 1	1.5m trunk	As Shown
<i>Alpinia nutans</i>	Dwarf Cardamom	1.5 x 1	300mm	As Shown
<i>Callistemon Great Balls of Fire</i>	Bottlebrush	1.75 x 1.75	300mm	As Shown
<i>Metrosideros collina</i> 'Tahiti'	Dwarf NZ Christmas Bush	1 x 1	300mm	As Shown
<i>Syzygium australe</i> 'Resilience'	Lilly Pilly	2 x 3	300mm	As Shown
<i>Westringia fruticosa</i> 'Blue Gem'	Blue Gem	1.5 x 1.3	300mm	As shown
<i>Arthopodium cirratum</i>	Renga Lily	.6 x .6	150mm	5/m2
<i>Carpobotus glaucescens</i>	Pigface	0.3 x 2	150mm	5/m2
<i>Dianella caerulea</i>	Blue Flax Lily	0.6 x 0.3	150mm	5/m2
<i>Dichondra repens</i>	Kidney Weed	.1 x 1.5	150mm	5/m2
<i>Dichondra</i> 'Silver Falls'		.1 x 1.5	150mm	5/m2
<i>Hardenbergia</i> 'Meema'	Coral Pea	0.5 x 1.0	150mm	5/m2
<i>Hibbertia scandens</i>	Guinea Flower	.1 x .2	150mm	5/m2
<i>Lomandra confertifolia</i> 'Seascape'	Lomandra Seascape	0.5 x 0.5	150mm	5/m2
<i>Lomandra</i> 'Hystrix'	Tropic Cascade	0.7 x 0.7	150mm	5/m2
<i>Lomandra</i> 'Crackerjack'	Crackerjack	1 x 1	150mm	5/m2
<i>Myoporum parvifolium</i>	Yareena	0.1 x 1.0	150mm	5/m2
<i>Viola hederacea</i>	Native Violet	.1 x .5	150mm	5/m2



Banksia integrifolia



Syzygium australe
'Resilience'



Westringia fruticosa 'Blue
Gem'



Callistemon 'Great Balls of
Fire'



Myoporum parvifolium



Lomandra confertifolia
'Seascape'



Lomandra 'Hystrix'

Aboriginal Family | Level 6

Located on level 6 adjacent the Aboriginal family lounge a breakout space provides outdoor seating with views towards the mountains. A raised garden bed to showcase locally significant food and medicinal planting. Curvilinear forms in the planter and paving reinforce the river motif.

Planting

- Shade tolerant
- Locally indigenous

Botanic Name	Common Name	Mature Size m (h x w)	Pot Size	Density
<i>Brachyscome multifida</i>	Cut Leaved Daisy	.2 x .5	150mm	
<i>Cissus antarctica</i>	Kangaroo Vine	.1 x 1	150mm	
<i>Pandorea pandorana</i>	Wonga Wonga Vine	.1 x 2	150mm	
<i>Hardenbergia violacea</i>	Happy Wanderer	.5 x 1	150mm	
<i>Hibbertia obtusifolia</i>	Hoary Guinea Flower	.2 x 1	150mm	
<i>Viola hederacea</i>	Native Violet	.1 x 1	150mm	
<i>Westringia 'Wynyabbie Gem'</i>	Native Rosemary	1 x 1	300mm	



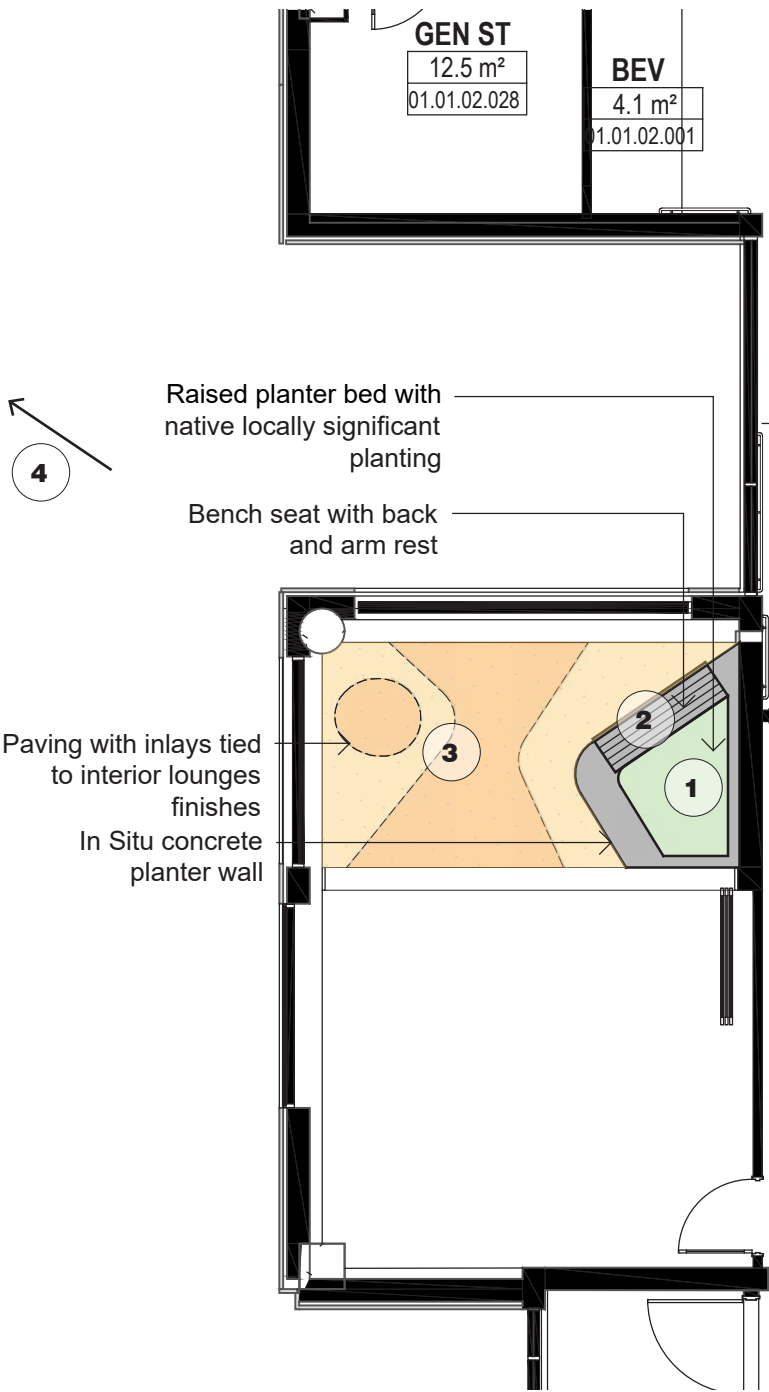
Brachyscome multifida



Cissus antarctica



Westringia 'Wynyabbie Gem'



1 Native planting with locally significant species



2 Seating edge to planter



3 Paving inlay



4 Views to Cullunghutti

Proposed Tree Planting

Proposed tree species have been selected to reinforce the parkland setting of the hospital.

A mixture of native and deciduous species are proposed.

Deciduous species will provide seasonal interest and solar access in winter particularly to the central forecourt.

Native Trees

- | | | |
|-----|---|-------------------------|
| Cc | <i>Casuarina cunninghamiana</i> | River She-Oak |
| Bi | <i>Banksia integrifolia</i> | Coast Banksia |
| Cv | <i>Callistemon viminalis</i> | Bottlebrush |
| Er | <i>Eucalyptus robusta</i> | Swamp Mahogany |
| Es | <i>Eucalyptus saligna</i> | Sydney Blue Gum |
| EsP | <i>Eucalyptus sideroxylon</i> 'Pink' | Pink Flowered Iron Bark |
| MI | <i>Melaleuca linarifolia</i> | Snow in Summer |
| Ms | <i>Melaleuca stypheloides</i> | Prickly Paperbark |
| TL | <i>Tristaniopsis laurina</i> 'Lucsious' | Watergum |
| Bp | <i>Brachychiton populneus</i> | Kurrajong Tree |
| Ba | <i>Brachychiton acerifolius</i> | Illawarra flame tree |



Tree Canopy

Existing trees are proposed to be retained and protected wherever possible providing shading and a green setting. Additional tree planting across the ground plane and will further contribute to canopy coverage.

- Existing Tree canopy to be removed
- Existing Tree to be Retained
- Proposed Tree Canopy
- Site Area

Quantity	Area Sqm	Site Percent
28	1576	5%
35	5412	18%
65	5353	8%
	29569	



Materiality

Materiality will be selected to be durable with minimal maintenance requirements. Where practical natural locally materials eg stone, timber will be incorporated to the landscape providing a connection to the wider landscape and familiarity in a hospital environment.

Features and items within the clinical courtyards ie Mental health and geriatric will be designed to meet requirements with safety audits undertaken.



SEARs Responses

SEARs Requirement	Landscape Response
Petails the proposed site planting, including location, number and species of planting, heights of trees at maturity and proposed canopy coverage.	An indicative planting schedule has been provided with species sizes. Detailed planting design is to be undertaken at design development stage.
Provides evidence that opportunities to retain significant trees have been explored and/or informs the plan.	Large stand within the open space presenting to Shoalhaven Street and North Street are to be retained these include the significant Blackbutt tree to be protected as serving as a centre peace for the open space. Trees long these boundaries will continue to contribute to the streetscapes shading road pavements and providing amenity for the broader community.
Demonstrates how the proposed development would: <div><div>o</div>contribute to long term landscape setting in respect of the site and streetscape.</div>	Where possible existing trees are to be provided maintaining and ensuring canopy to the streetscape. Adjacent to the L00 entry buffer shrub, grass, groundcover and tree planting will soften the built form. Complementary tree planting will ensure ongoing canopy cover is maintained. Investigations are being undertaken into the collection of seed from the Blackbutt tree to use in the future and preserve this important cultural and environmental treasure. The open space area will continue to serve the broader community with accessible links though enhancing the experience and connectivity. Across the broader masterplan the landscape seeks to enhance connections and reinforce wayfinding throughout the campus.
<div><div>o</div>mitigate the urban heat island effect and ensure appropriate comfort levels on-site.</div>	Tree planting is proposed throughout the landscape spaces and softscape extents maximised while providing accessible linkages and connectivity. Architectural canopies and undercrofts provide sheltered seating at pickup and drop off areas.
<div><div>o</div>contribute to the objective of increased urban tree canopy cover.</div>	A plan demonstrating the tree canopy cover is provided on drawing 0026
<div><div>o</div>maximise opportunities for green infrastructure, consistent with Greener Places.</div>	Responses to Greener Places and Better Placed documents are provided on the following page
Council Referral Letter 16.02.2000	
Strategic Matters for Consideration It is important that the existing remnant vegetation that is located within the area at the southern end of the site that is shown in the Zonal Master Plan is retained and also reinforced in an appropriate manner. This includes the significant Blackbutt tree that is located in this area. The proposed design needs to take advantage of this retained space integrate the open space and hospital. Some early discussions were held with Council regarding the future management of the retained park area – further clarification and discussions are required in this regard as the project advances. It is also important that existing street trees along Shoalhaven Street are retained and replaced/augmented where needed.	The existing Blackbutt tree is to be retained along with trees to the south western corner of the site facing Shoalhaven and North Streets. Current proposals and arborists information do not have sufficient room between existing trees for additional planting without affecting the trees to be retained. Should further development of engineering designs require tree removal replacement trees will be included. Ongoing investigation and development of play equipment to the open space is being developed. An indicative proposal is included on page 15 of this report.
Retention of vegetation and management of remnant park Existing Hospital Site – Clarification is sought on the future use of the existing hospital site (particularly the northern part) and whether there will or could be capacity in the future to, for example, accommodate additional uses such as complimentary health facilities or provide open space linkages or similar to adjoining Riverfront Precinct.	This SSDA proposal scope is limited to the ASB site in the south east corner of the masterplan. The landscape will incorporate and reinforce connections though the site wherever possible and provide a philosophy which may be adopted across the site though future works and stages.

Greener Places and Better Places Landscape Response

Designing to the *Greener Places* and *Better Placed* Design Framework for Green Infrastructure:

Following the ethos of the ‘*Greener Places*’ design framework, this project focuses on providing a development harmonious with the existing setting.

Incorporating the *Greener Places* and *Better Places* principles through the landscape design philosophy

1. Integration & Better for community

Combine green infrastructure with urban development and grey infrastructure

Tree planting and site planning of new buildings to maintain significant existing trees has been highly considered areas of canopy cover to the open space portion of the site which provide linkages at a broader scale towards the river and showgrounds. Complementary tree canopy around the proposal building and streetscapes will further reinforce these connections.

Exploration of WSUD initiatives have been employed, and even show cased by the inclusion of a central infiltration bed at the drop off area with pathways and seating allowing for community engagement and education.

2. Connectivity

Create an interconnected network of open space

New and existing open spaces shall be connected by much needed and more legible pathway networks. A large existing open space, which shall be upgraded and enhanced will be connected with carefully considered path network; representing new and existing desire lines. A new ceremonial space shall sit adjacent to a new pedestrian share way, this will allow for easy access from the building and drop off area. Future connections though the broader site will utilise the forecourt and open space path network for greater pedestrian connectivity.

3. Multi functionality & Better Fit

Deliver multiple ecosystem services simultaneously

The landscape performs a variety of ecosystem services including the treatment and management of water on site, and climate regulating though minimising hardstand and increasing tree canopy cover. Greater biodiversity in planting will allow for pollination and habitat creation. Culturally spaces have been provided to support the passing of knowledge and in particular the significance of key natural features on and around the site- the Blackbutt tree, Shoalhaven river and local mountains.

4. Participation & Better Value

Involve stakeholders in development and implementation

Participation as a principle seeks to involve the knowledge and needs of diverse parties in relation to planning. Ongoing engagement across indigenous groups and user groups has informed key design drivers and principles explained in this document. The look and feel of the landscape is to represent the community and include opportunities for ongoing participation and evolution through time.

Clinical courtyards are being developed with local user groups. The wealth of knowledge offered within this setting ensure the design and features are relevant for the community and supported by the day to day end users.

These principles are supported by three key strategies of

- **Open space for recreation**

The open space provides including the Ceremony Space and Playground provides opportunities for recreation alongside the functioning hospital. These spaces allow for formal and informal gatherings of a variety of sizes, day and year round use of the space. Outdoor clinical spaces enable users the chance to connect with nature undertaking physical therapy outside and allow for respite.

- **Urban tree canopy**

The landscape design proposes canopy cover across the extent of the ground plane resulting in a net increase in canopy cover this is to be supported by an understory of locally native species complementing local ecologies of the area.

- **Connecting bushland and waterways**

The additional tree canopy will complement existing tree canopy in the area. The additional of new planting will ensure diversity in the age of trees on site ensuring secession in tree stock for ongoing tree canopy into the future.

Within the site, a WSUD approach will ensure that water coming though the site will be appropriately captured treated and reused.

The key benefits of adopting the *Greener Places* and *Better Places* framework as a basis for this design include:

- Locally harmonious landscape character
- Consideration of micro climates within the site
- sharing of the cultural and environmental stories of the area