

A stylized topographic map with green contour lines is positioned on the left side of the page, extending from the top left towards the bottom left.

Shoalhaven Hospital Redevelopment Statement of Heritage Impact

Health Infrastructure NSW

DOCUMENT TRACKING

Project Name	Shoalhaven Hospital Redevelopment - Statement of Heritage Impact
Project Number	22SYD 2591
Project Manager	Karyn McLeod
Prepared by	Jennifer Norfolk
Reviewed by	Karyn McLeod
Approved by	Karyn McLeod
Status	Final
Version Number	v1
Last saved on	27 June 2022

This report should be cited as 'Eco Logical Australia 2022. *Shoalhaven Hospital Redevelopment. Statement of Heritage Impact.* Prepared for Health Infrastructure NSW.'

ACKNOWLEDGEMENTS

This document has been prepared by Eco Logical Australia Pty Ltd.

Disclaimer

This document may only be used for the purpose for which it was commissioned and in accordance with the contract between Eco Logical Australia Pty Ltd and Health Infrastructure NSW. The scope of services was defined in consultation with Health Infrastructure NSW, by time and budgetary constraints imposed by the client, and the availability of reports and other data on the subject area. Changes to available information, legislation and schedules are made on an ongoing basis and readers should obtain up to date information. Eco Logical Australia Pty Ltd accepts no liability or responsibility whatsoever for or in respect of any use of or reliance upon this report and its supporting material by any third party. Information provided is not intended to be a substitute for site specific assessment or legal advice in relation to any matter. Unauthorised use of this report in any form is prohibited.

Template 2.8.1

Contents

1. Introduction	1
1.1 Background.....	1
1.2 Study area location and terminology.....	1
1.3 Proposal.....	2
1.4 Methodology	2
1.5 Author identification	2
2. Site context	4
2.1 Site history.....	4
2.2 Site description.....	6
2.3 Archaeological assessment	7
3. Heritage Impact Assessment.....	8
3.1 Listing.....	8
3.1.1 Shoalhaven District Memorial Hospital	9
3.1.2 Bens Walk including Suspension Bridge and Aboriginal Art Sites.....	9
3.1.3 Nowra showground and sportsground complex	10
3.1.4 St Michael's Roman Catholic Church including two storey Victorian Presbytery, Cemetery and grounds	11
3.2 Proposal.....	12
3.3 Statutory Controls	13
3.3.1 <i>Heritage Act 1977</i> (New South Wales)	13
3.3.2 <i>Environmental Planning and Assessment Act 1979</i> (New South Wales)	13
3.3.3 Shoalhaven Local Environmental Plan 2014	14
3.4 Heritage Office guidelines	15
4. Conclusion and Recommendations	17
5. References	19
Appendix A : Heritage Listings for Shoalhaven LEP 2014 heritage items & Shoalhaven District Memorial Hospital – s170 Department of Health.....	20

List of Figures

Figure 1: The subject site, outlined in red.....	1
Figure 2: The subject site, the proposed redevelopment outlined in yellow	3
Figure 3: Extract of Parish of Nowra map (1922) showing the hospital site and Nowra Park	5
Figure 4: Shoalhaven Memorial Hospital in 1951 (Source: South Coast Register 20 May 2001)	6
Figure 5: Subject site (blue) and local heritage listed items (brown).	8

List of Tables

Table 1 Section 5.10 LEP clauses14

Table 2 Heritage Office guidelines15

1. Introduction

1.1 Background

The Shoalhaven region's population is growing and ageing, and people are living longer with chronic and complex illnesses. Health services in the region will need to be more self-sufficient, giving residents access to more locally available services hence the necessity for the redevelopment of the hospital to grow and adjust services to meet changing health needs within the region.

Eco Logical Australia (ELA) has been engaged by the Health Infrastructure NSW to prepare a Statement of Heritage Impact (SoHI) to support the refurbishment of existing buildings and construction of additional buildings within the Shoalhaven District Memorial Hospital ('Shoalhaven Hospital'). This SoHI has been undertaken to meet the Secretary's Environmental Assessment Requirements (SEARs) (SSD-359994868) received 23 February 2022. This report supports a State Significant Development Application (SSDA) submitted to the Minister for Planning and Public Spaces, clause 14(a) of Schedule 1 of the *State Environmental Planning Policy (Planning Systems) 2021* as it involves development for the purposes of a hospital with a capital investment value in excess of \$30 million. This SSDA seeks consent for the development and expansion of Shoalhaven Hospital located at Scenic Drive, Nowra (Figure 1).

The proposed redevelopment is subject to assessment by the Department of Planning, Industry and Environment (DPIE) as a State Significant Development (SSD-359994868). The relevant assessment requirement as specified in the issued SEARs is as follows - *Issue 20: Environmental Heritage – Where there are direct or indirect impacts on the heritage significance of items of environmental heritage, provide a Statement of Heritage Impact and Archaeological Assessment (if potential impacts to archaeological resources are identified), prepared in accordance with the relevant guidelines, which assesses any impacts and outlines measures to ensure they are minimised and mitigated.*

Shoalhaven District Memorial Hospital is included on the NSW Department of Health s170 register and several heritage items listed in Schedule 5 of the Shoalhaven Local Environmental Plan (LEP) 2014 are located adjacent to Shoalhaven Hospital. A heritage assessment is required when there is proposed development in accordance with Part 5 section 5.10 subclause 5(c) on land that is in the vicinity of a heritage item or heritage conservation area.

This report will identify and assess any potential impacts to the heritage significance of the items within, and in the vicinity of the proposed works. Where necessary, mitigative measures and recommendations for the long-term conservation of heritage values will be provided.

1.2 Study area location and terminology

Consistent terminology for the SoHI and included plans is provided below:

Subject Site: includes the subject lots and described as the Shoalhaven District Memorial Hospital (SDMH), Nowra Park and the Shoalhaven Community Pre-School. The subject site has been mapped in Figure 1 below.

Subject Lots: lots within the subject site, comprising the following –

Lot 373 DP755952 – main/ original hospital site – will be refurbished under current scope of works.

Lot 1 DP1043088 – at-grade and multi deck car park off Scenic Drive

Lot 1031 DP1208730 – General Practice Super Clinic

Lot 1032 DP1208730 – Cancer Care Centre and part multi-deck car park

Lot 104 DP1165533 – Nowra Park – was acquired by compulsory acquisition process for the purposes of the Health Administration Act to extend the Shoalhaven Hospital campus and to facilitate the new development.

Lot 7034 DP1031852 – The Shoalhaven Community Pre-School

Study Area: refers to the subject site and additional areas that may be affected by future site planning, including the adjacent portion of Ben's Walk, road reserve adjacent to the subject site and any street trees.

1.3 Proposal

Health Infrastructure NSW is aiming to provide the infrastructure to meet the growing health care needs of the population in the Shoalhaven LGA and surrounds.

The proposed Shoalhaven Hospital Redevelopment under SSD-35999468 relates solely to the development of a new hospital building.

The works include a new ambulance entry from Shoalhaven Street, new public and servicing accessway off North Street, and separate loading dock entry and mortuary parking off Shoalhaven Street.

A range of infrastructure and civil engineering works are proposed as well as demolition of existing structures within the footprint of the new building and/or on the existing hospital campus where the linkway connection is proposed. Earthworks will be necessitated within the building's footprint and immediate environs.



Figure 1: The subject site, outlined in red

1.4 Methodology

This Heritage Impact Statement has been prepared in accordance with the NSW Heritage Manual 'Statements of Heritage Impact' (2002) and 'Assessing Heritage Significance' (2001) guidelines. The philosophy and process adopted is that guided by the *Australia ICOMOS Burra Charter* 1999.

The subject proposal has also been assessed against requirements of the *Shoalhaven Local Environmental Plan* 2014, the *Shoalhaven Development Control Plan* 2014.

This assessment included the following:

- A search of the NSW State Heritage Inventory, the Shoalhaven LEP 2014 and the Australian Heritage Database to determine if there is any additional information on places of heritage significance in or near to the subject site.
- A site visit that included assessment any heritage constraints that may apply to potential redevelopment of the subject site.
- Consideration of the questions posed in the NSW Heritage Office's *Statement of Heritage Impact* guidelines; and
- Consideration of the relevant questions posed in the requirements of the Shoalhaven LEP 2014.

1.5 Author identification

This report has been prepared by Jennifer Norfolk, Senior Heritage Advisor and reviewed by Karyn McLeod, Principal Heritage Advisor, (BA Hons [Archaeology] University of Sydney, MA [Cultural Heritage] Deakin University).

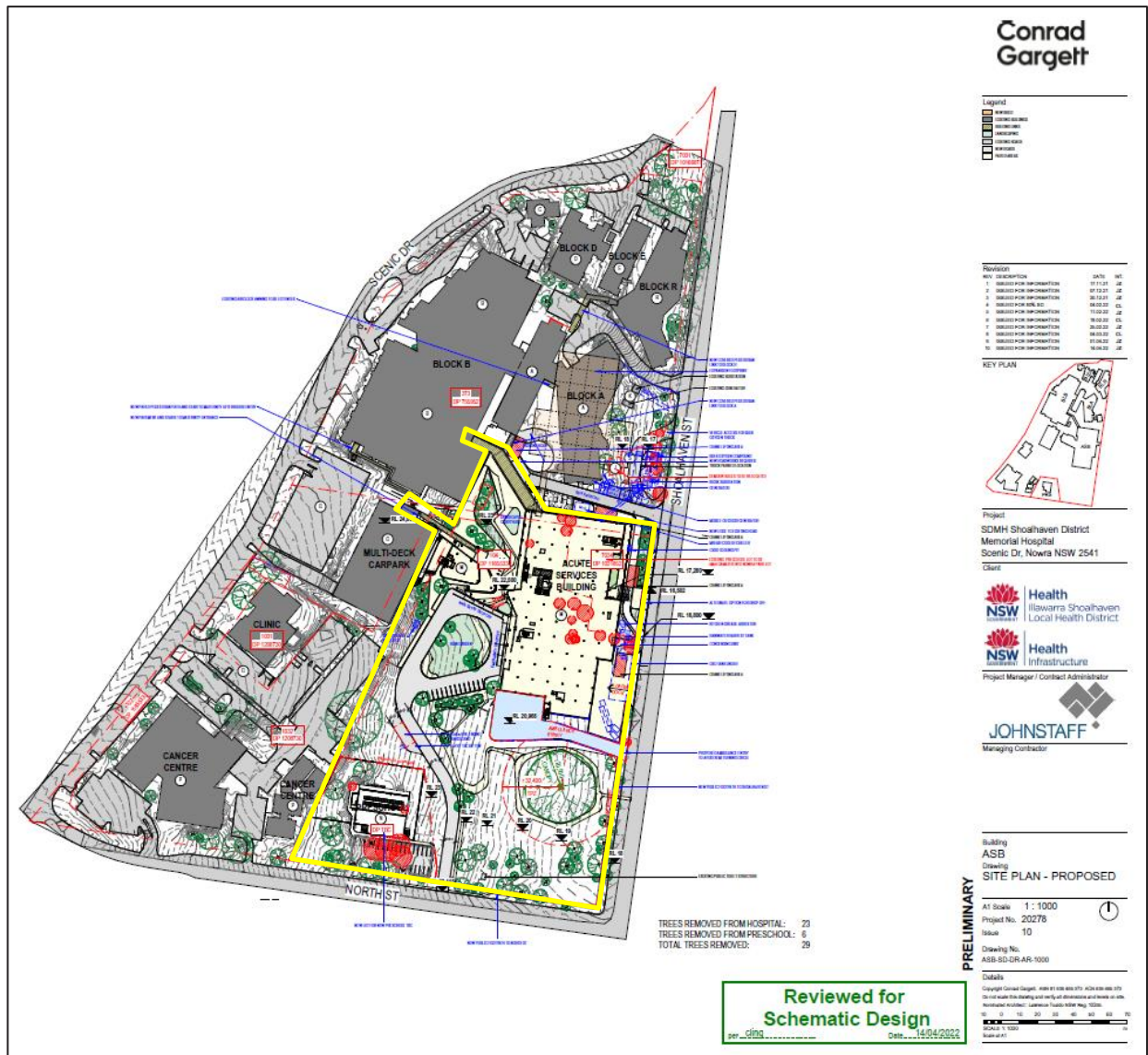


Figure 2: The subject site, the proposed redevelopment outlined in yellow

2. Site context

2.1 Site history

The Shoalhaven / Nowra area was explored as early as 1797 and the first land grants were made from 1820. Settlement of the Nowra area did not occur until the 1850s when the Surveyor General instructed a plan be prepared for a town on the south side of Shoalhaven River.

The township of Nowra was divided into town blocks and land sales from mid-1850 through to the 1870s firmly established an urban centre. The Municipality of Nowra was gazetted in 1871.

The subject site was dedicated as land for public recreation in 1876, this was added to in 1886 extending the public recreation area south to encompass the entire subject site. By 1897 it was proclaimed Nowra Park. The northern area of the park was surveyed for the hospital in 1922 and was approved by 1946.

The Shoalhaven District Memorial Hospital opened in 1951 and continues to operate to this day to provide health services to the town of Nowra and surrounding region. Prior to its opening, the nearest public hospital had been the David Berry Hospital in Berry, 20km away which was built in 1908-9.

The Shoalhaven Hospital has undergone multiple refurbishments, alterations and additions over the years. The original hospital site has expanded beyond its original footprint with the most recent addition of the Cancer Care Centre that was developed in 2013 in the south western corner of the subject site. The original hospital and its subsequent additions were built on land that was part of Nowra Park. A brief timeline of the development of the hospital is included below.

SUMMARY OF CHRONOLOGICAL CHANGES TO THE HOSPITAL SITE

Year	Event
1949	Site cleared
	Nowra Brickworks supplied 40,000 bricks for the foundation
	Hospital opens
1951	A 70 foot tree falls on the women's section of the newly constructed hospital
1954	X-ray and pathology department established
1958	Construction of maternity wing, nurse's home, boiler house and laundry
1972	New wing opened
1973	Former kitchen and staff dining room renovated to house children's ward
1989	Planning begins for methadone clinic
1992	Two new operating theatres added
1999	Renal unit opens
2001	Hospital celebrates 50 th anniversary of its opening Second stage of hospital redevelopment commences
2004	Renal unit expanded to include 13 dialysis chairs
2013	Shoalhaven Cancer Care Centre opens

Year	Event
2015	GP Super clinic and Medicare Local facilities constructed

Source: South Coast Register 2001, 2012, 2017.

In the early 1940s Nowra had three doctors with a population of 3,500 and community desire for more comprehensive health services was rising. A committee of Nowra residents and businesses was formed in 1942 to progress the development of a hospital in Nowra. When the then Health Minister - Christopher Kelly - admitted that Nowra was the largest country town in NSW without a public hospital, the community rallied, and bumper stickers were printed to this effect and a billboard was erected at the northern approach to Nowra (South Coast Register 23 May 2017).

In April 1949 the site for the hospital was cleared and on Saturday 19 May 1951, the hospital was opened. According to newspaper reports, the first patient was Allan Owen of Nowra who was carried through the front doors of the hospital by ambulance officers before a crowd of 1500 people who attended the opening (South Coast Register 23 May 2017).

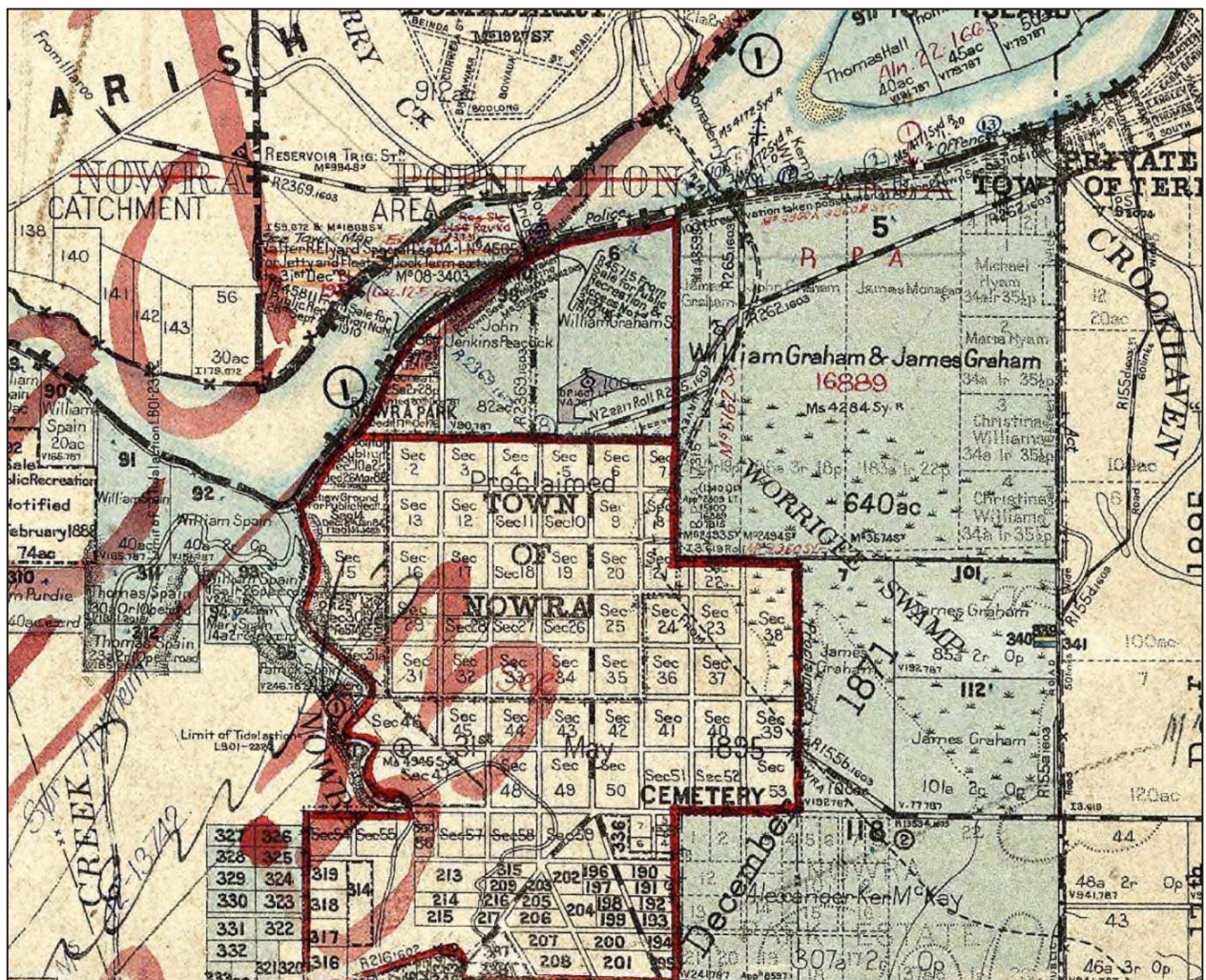


Figure 3: Extract of Parish of Nowra map (1922) showing the hospital site and Nowra Park

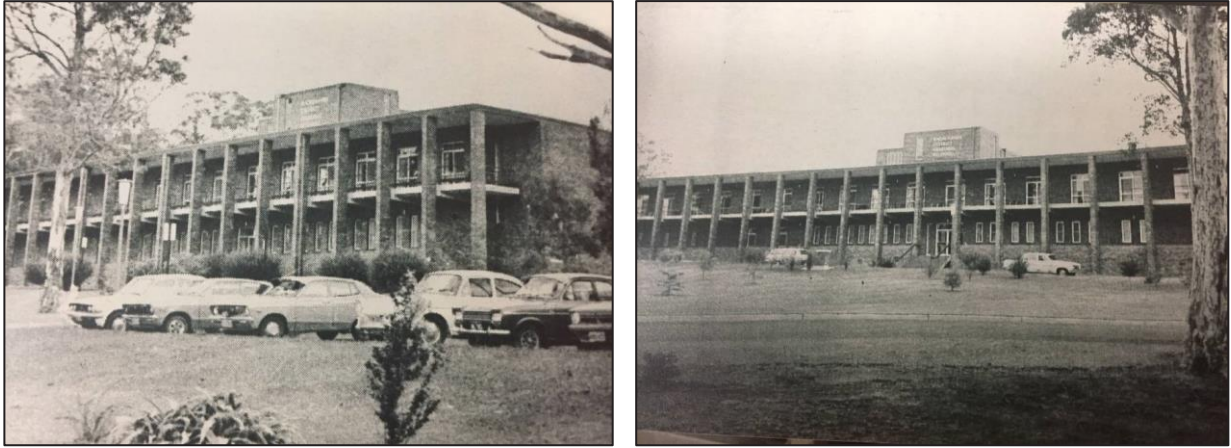


Figure 4: Shoalhaven Memorial Hospital in 1951 (Source: South Coast Register 20 May 2001)

2.2 Site description

A site based assessment of the potential historic heritage values present within the subject site was undertaken on 21 August 2019 by Alistair Grinbergs – Principal Consultant with ELA. A second inspection of the subject site targeting the Nowra Park was undertaken on 7 November 2019 by ELA Archaeologist Daniel Claggett. A further site inspection was undertaken by Charlotte Bradshaw ELA Archaeologist on 17 October 2021. The assessment involved a comprehensive visual assessment of the proposed development site and any features that could potentially be associated with the past use of the land.

The subject site includes the main hospital building addressing Scenic Drive (Block B – built in 2004) and the original 1951 building addressing Shoalhaven Street (Block A and its 1996 extension). More recent buildings include Mental Health (2014) to the north-east extent of the campus, the Cancer Care Centre (2013) and the GP Super Clinic (2015) each of which sit south of the original hospital along Scenic Drive. A new multi-deck car park was completed in 2020 and accommodates 220 spaces over three to four split levels. This sits adjacent to a large at-grade car park with access off Scenic Drive. The development of the Cancer Care Centre and GP Super Clinic has involved a progressive transition and expansion to the south of the original campus which has included acquisition of the south-western parts of Nowra Park by the NSW Health Administration Corporation (HAC).

2.3 Archaeological assessment

In NSW, the process of finding out whether an item is important is called assessing significance. To be considered a 'relic' under the Heritage Act, an item must have either local or State significance. A site or resource is said to be scientifically significant when its further study may be expected to help answer questions (Bickford and Sullivan, 1984 pp 23–24). For example, can the site contribute knowledge and is this knowledge relevant to general questions about associations with individuals, groups or events of historical or social importance. While a site may have archaeological potential, the resource may not be significant if it does not have the ability to provide important information regarding a range of questions concerning way of life, taste, function, custom or process, location, setting, design, materials and workmanship etc (Kerr 2000:8).

An archaeological resource should add to the knowledge of the past in an important way, rather than merely duplicating known information or information that might be more readily available from other sources such as documentary records or oral history.

As the study area was a park and not subject to domestic, commercial or industrial uses. Since the park was proclaimed as public recreation space in the 1876 the park has been encroached on by development of the existing hospital and facilities and the construction of the Pre-School. The use of the remaining portion has remained unchanged. The study area has no archaeological potential and therefore no archaeological significance.

3. Heritage Impact Assessment

3.1 Listing

Before making decisions to change a heritage item, it is important to understand its values. This leads to decisions that will retain these values in the future. Statements of heritage significance summarise a place's heritage values – why it is important, why a statutory listing was made to protect these values.

The Heritage Council of NSW has developed a set of seven criteria for assessing heritage significance, which can be used to make decisions about the heritage value of a place or item. These include historical, associative, social, aesthetic, research potential, rarity and representative.

There are two levels of heritage significance used in NSW: state and local.

The Shoalhaven Memorial hospital is included on the NSW Department of Health s170 register. Additionally, there are three locally-listed heritage items located within the vicinity of the subject site and listed on Schedule 5 of the Shoalhaven Local Environmental Plan (LEP) 2014.

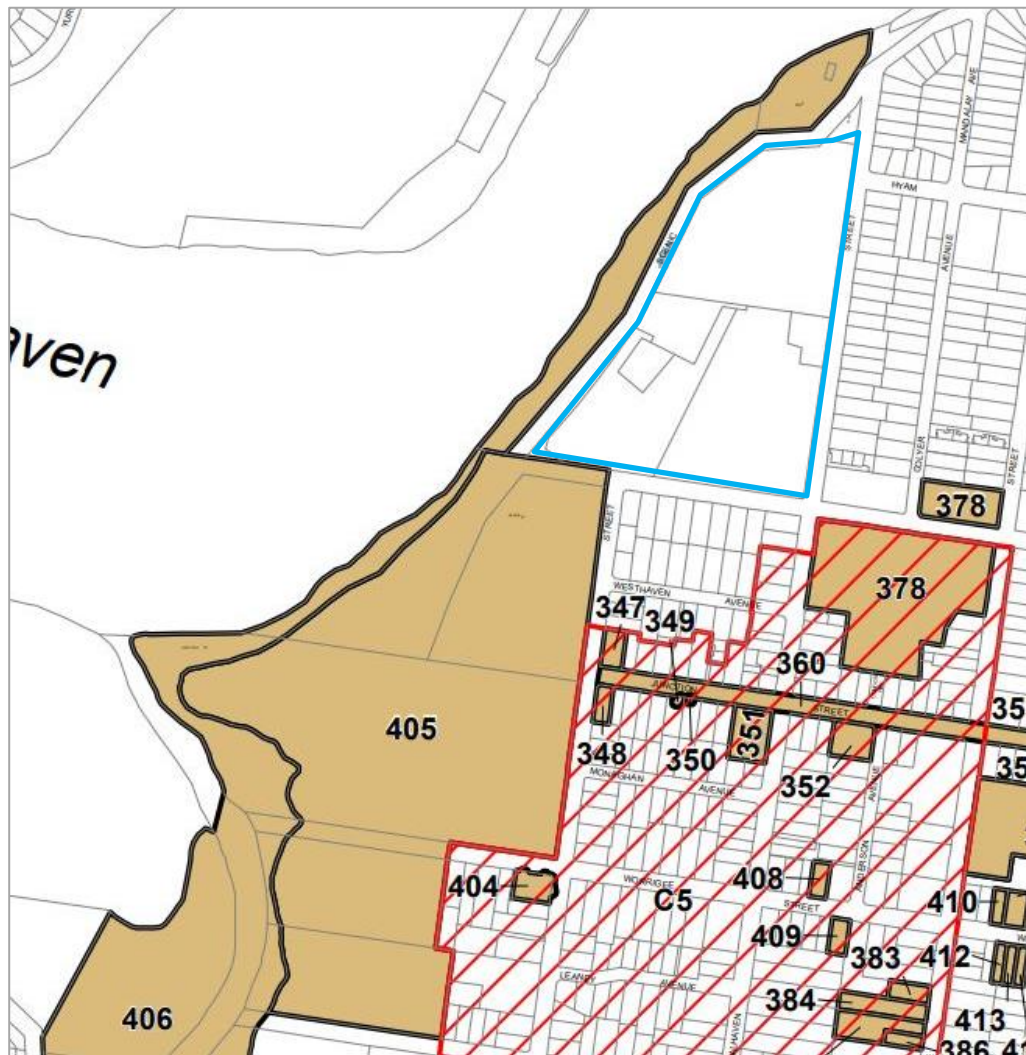


Figure 5: Subject site (blue) and local heritage listed items (brown).

LISTED HERITAGE ITEMS

There are four listed heritage items situated within the study area, of which one item is located within the subject site itself. One Conservation area is also located within the study area.

Item	Location	Listing
Shoalhaven District Memorial Hospital	Shoalhaven Street, Nowra	Department of Health s170 Register
Bens Walk including Suspension Bridge and Aboriginal Art Sites	Reserve No R70802; Reserve No R6754; Lot 7036, DP 1068935; Lot 7326, DP 1166983; Lot 701, DP 1025652; Lot 7005, DP 1023875; Lot 7301, DP 1134093; Lot 704, DP 1024834; Part Lots 94 and 95, DP 755952; Part Lots 1 and 2, Section 31A, DP 758794; Lot 703, DP 1024833; Part Lot 1, Section 15, DP 758794; Part Lot 4, DP 1136269; Lot 3, DP 585626; Lot 701, DP 1024852; Part of Lot 7018, DP 1024840; Lot 7322, DP 1164817; Lot 7019, DP 1016688; Lot 392 and Part Lot 391, DP 755952; Crown roads	Shoalhaven LEP 2014 Item no. 406
Nowra showground and sportsground complex	South of North Street, east of Scenic Drive, North of Plunkett Street and West of West Street.	Shoalhaven LEP 2014 Item no. 405
St Michael's Roman Catholic Church including two storey Victorian Presbytery, Cemetery and Grounds	20 North Street, Nowra	Shoalhaven LEP 2014 Item no. 378

*Details of the places are included at Appendix A.

The following descriptions and statements of significance are sourced from the State Heritage Inventory (SHI) (<https://www.heritage.nsw.gov.au/search-for-heritage/search-for-nsw-heritage/>) and additional heritage consultant input.

3.1.1 Shoalhaven District Memorial Hospital

The Shoalhaven District memorial Hospital is included on the NSW Department of Health Section 170 Register under the *Heritage Act 1977*. The listing rests on the fact that the hospital demonstrates the following national and NSW historic themes:

Australian theme (abbrev)	New South Wales theme
3. Economy-Developing local, regional and national economies	Health-Activities associated with preparing and providing medical assistance and/or promoting or maintaining the wellbeing of humans

The inclusion of the hospital site is not related to a particular building or structure, nor is it associated with a particular historic phase in the development or evolution of the hospital site. Rather that the hospital exists as a functional community service. The proposed redevelopment will add to the overall complexity of the site's built environment and contribute to its ongoing evolution.

3.1.2 Bens Walk including Suspension Bridge and Aboriginal Art Sites

DESCRIPTION

The track commences at the Shoalhaven River Bridge and follows the south bank of the river via Paringa Park to Hanging Rock and the Showground. From Hanging Rock, the track descends the cliff face and follows the Nowra Creek beneath huge sandstone boulders and eroded shelves. A suspension bridge

has been erected to provide a looped walk on both sides of the creek and to give access to Depot Farm Recreation Reserve and picnic area. The complete track provides a return walk of about 5.5 km and takes about two hours.

Highlights along the walk include Paringa Park, an old sandstone quarry and also the location during the second world war of the timber framed boat building industry. Hanging Rock is 46.25 m above the river and is used as a look out.

Numerous caves and shelters in the vicinity of hanging rock, the site of the original suspension bridge, Depot Farm and Nowra Creek which is an extension of Bens Walk contains Aboriginal Rock paintings and cascades.

SIGNIFICANCE

High social value as an early form of recreational activity. Local significance (Shoalhaven). Updated 16/10/2001. (Heritage NSW SHI Inventory sheet)

3.1.3 Nowra showground and sportsground complex

DESCRIPTION

Historical period:1876-1900

Showgrounds and sportsground including grove of Hills Figs on south side of pavilion. Stunning view from rear of pavilion to river and escarpment. Components of the Showground Complex include:

- The Grandstand which is the dominant element in the well treed grounds of the Nowra Parklands.
- The Federation style Grandstand overlooks the central sports/events oval of the showground.
- Victorian masonry entrance gatehouse now men's toilet.
- Monaghan Memorial Fountain - Hanging Rock Lookout; and
- Inter war castellated gateway.
- Mature Eucalypts, Spotted Gums etc.

A number of additional buildings have been constructed within the Parklands including the Woodchop arena and additional grandstanding and the Youth Hall. Some of these buildings are unsympathetic to the significance of the showground complex and particularly the woodchop tower which has had an adverse impact on the entrance drive to Hanging Rock Lookout.

SIGNIFICANCE

As a focus for agricultural, sporting and community gatherings since 1886, it is of high social significance. The showground is held in high esteem by the district community as a venue for the annual show since 1886, and sporting and social events. The War Memorial entry gates are of special significance as a tangible reminder of Australia's participation in various international war arenas, especially World War One.

It is associated with early pioneers of the Nowra area including members of the Shoalhaven Agricultural & Horticultural Association, especially James Monaghan, the first secretary of this association in 1874.

As a showground complex the aesthetic qualities of built structures such as the Federation Pavilion, the Federation Gothic War Memorial Gates, the rustic qualities of the Horse and Cattle Area, the splendid stands of mature trees and the spectacular setting by the Shoalhaven River and views from Hanging Rock Lookout combine to give it landmark qualities.

The showground with its pavilion overlooking the oval and the adjoining Horse and Cattle area is a fine example of a design of a regional showground. The level of intactness of the pavilion and the war memorial gates displays examples of architectural design characteristics of the time.

Local significance (Shoalhaven). Updated 15/02/2012. (Heritage NSW SHI Inventory sheet)

3.1.4 St Michael's Roman Catholic Church including two storey Victorian Presbytery, Cemetery and grounds

This heritage listing is a group listing of locally significant heritage items. The heritage item does not have a statement of significance, rather the individual items have their own statement of significance.

3.1.4.1 St Michael's Roman Catholic Two Storey Victorian Presbytery

DESCRIPTION

Large two storey Victorian Residence. Asymmetrical gabled construction with L-shaped plan. Constructed of stuccoed masonry, with corrugated iron roof and quarry faced stone foundations Skillion roofed two storey verandah returns to one side. Modern wrought iron balustrade to upper balcony. Timber lattice balustrade to lower balcony. Paired arched windows to upper level of gabled facade. Pillared mullions and label mouldings. Faceted bay window with iron hood. Elaborate plaster cornice with paired brackets, label mouldings, mullion detail and label mouldings. Panelled entrance door with glass and timber side panels and glass transom light. Several fine old trees. Modifications: Let down by alterations to upper balcony and loss of verandah detail. Otherwise appears in good condition and little altered. Brick fence to front, circa 1950. Screen door.

SIGNIFICANCE

Late Victorian Catholic Presbytery featuring some fine stucco work. One of the best surviving examples in Nowra. Social and historical interest for its grouping with the adjoining church and cemetery. Local significance (Shoalhaven). Updated 29/09/2017. (Heritage NSW SHI Inventory sheet)

3.1.4.2 St. Michael's Catholic Church

DESCRIPTION

Twentieth century stripped Gothic style church. Stone with terracotta Marseilles tiled roof. Coursed rubble with quoining and buttresses. All gabled roof with gabled porch to street front. Exposed roofing rafters and plain timber bargeboards to gables. 3 metal vents at apex of roof. Simple arched door to porch with traditional vertical boarded door and external hinges. Windows lanceolate with 3 lights. Carved stone finials to ridge cappings at gables. At the rear a rectangular 'apse' or sacristy balances the rectangular form of the entrance porch. Modifications: Unsympathetic modern flat roofed extension to side. Modern brick fence to front.

SIGNIFICANCE

Twentieth century stone Gothic Revival style church. Social and historical interest to local Catholic community. Group value with adjoining school, convent and cemetery. Streetscape contribution. Local significance (Shoalhaven). (Heritage NSW SHI Inventory sheet)

3.1.4.3 St. Michael's Roman Catholic Cemetery

DESCRIPTION

The Catholic Cemetery is located at the corner of Osborne and North Streets in association with the adjoining school convent and presbytery. The graves are arranged typically in ordered rows with graves aligned east-west. Grave surrounds appear to have been removed although a number retain their sandstone and cast and wrought iron surrounds. The cemetery contains an outstanding display of the mason's art. There are some 20 High Victorian sandstone stelae and approximately 12 white marble stelae with shamrock and other motifs. There are also 3 large sandstone crosses including one Celtic example. Modifications: The cemetery is relatively unmodified and in good repair.

SIGNIFICANCE

Locally rare early cemetery. The monuments form an outstanding collection of examples of the nineteenth century stonemason's art. The grave markers, demonstrate the skills of the monumental mason and form an unusually homogeneous group. The inscriptions provide a genealogical record of the community including many early settlers. Local significance (Shoalhaven). (Heritage NSW SHI Inventory sheet)

3.2 Proposal

The proposed Shoalhaven Hospital Redevelopment under SSD-35999468 relates solely to the development of a new hospital building. The scope includes a new 9-level structure:

- Level 00 – Back of House (BOH), loading dock, kitchen, plant, pharmacy, staff amenities, mortuary, and plant.
- Level 01 – Front of House (FOH), Emergency Department (ED), Medical Imaging, and Cafe
- Level 02 – Operating Suites & Endoscopy, Central Sterile Supply Department (CSSD), and linkway to Block B
- Level 03 – Coronary Care Unit (CCU), Close Observation Unit (COU), Intensive Care Unit (ICU), cultural centre, and plant
- Level 04 – In-Patient Unit (IPU), Mental Health, and plant
- Level 05 – In-Patient Unit (IPU)
- Level 06 – In-Patient Unit (IPU)
- Level 07 – Rooftop plant
- Level 08 – Helipad.

The works include a new ambulance entry from Shoalhaven Street, new public and servicing accessway off North Street, and separate loading dock entry and mortuary parking off Shoalhaven Street.

A range of infrastructure and civil engineering works are proposed as well as demolition of existing structures within the footprint of the new building and/or on the existing hospital campus where the

linkway connection is proposed. Earthworks will be necessitated within the building's footprint and immediate environs. A number of selected trees will require removal. None of those trees are listed. All old growth trees will be retained and protected. Replacement planting at a minimum rate of 1:1 is proposed.

3.3 Statutory Controls

3.3.1 *Heritage Act 1977 (New South Wales)*

The *Heritage Act 1977* (NSW) provides protection of the environmental heritage of the State which includes places, buildings, works, relics, movable objects or precincts that are of State or local heritage significance.

The NSW State Heritage Register (SHR) is the statutory register under Part 3A of the NSW Heritage Act. Listing on the SHR means that any proposed works or alterations (unless exempted) to listed items must be approved by the Heritage Council or its delegates under section 60.

Section 57(2) of the Heritage Act provides for a number of potential exemptions to Section 57(1) approval requirements to reduce the need for approval of minor or regular works such as maintenance. Exempted development does not require prior Heritage Council approval. Standard exemptions do not apply to the disturbance, destruction, removal or exposure of archaeological relics.

Archaeological features and deposits are afforded statutory protection by the 'relics provision'. Section 4(1) of the Heritage Act (as amended 2009) defines 'relic' as *any deposit, artefact, object or material that relates to the settlement of the area that comprises New South Wales, not being Aboriginal settlement, and is of State or Local heritage significance*. The 'relics provision' requires that no archaeological relics be disturbed or destroyed without prior consent from the Heritage Council of NSW.

Archaeological sites that are not located within a state heritage curtilage are protected under Section 139-140 of the *Heritage Act 1977* (Heritage Act). A person must not disturb or excavate any land knowing or having reasonable cause to suspect that the disturbance or excavation will or is likely to result in a relic being discovered, exposed, moved, damage or destroyed unless the disturbance or excavation is carried out in accordance with an excavation permit.

The Heritage Council must be notified on the discovery of a relic under Section 146 of the Heritage Act.

The Shoalhaven Memorial Hospital is not a State listed heritage item nor are there any known archaeological sites. No approvals are required from the Heritage Council.

3.3.2 *Environmental Planning and Assessment Act 1979 (New South Wales)*

The *Environmental Planning and Assessment Act 1979* (EP&A Act) requires that consideration is given to environmental impacts as part of the land use planning process. In New South Wales, environmental impacts are interpreted as including cultural heritage impact. Proposed activities and development are considered under different parts of the EP&A Act, including:

- Major projects (State Significant Development under Part 4.1 and State Significant Infrastructure under Part 5.1) require the approval of the Minister for Planning.

- Minor or routine developments requiring local council consent are usually undertaken under Part 4 activities which, in limited circumstances, may require the Minister's consent: and
- Part 5 activities which do not require development consent. These are often infrastructure projects approved by local councils or the State agency undertaking the project.

Notwithstanding this, under Section 5.5 of the EP&A Act, a determining authority has the duty to fully consider the environmental impact of an activity and is required to "take into account to the fullest extent possible all matters affecting, or likely to affect the environment" arising from the proposal. This is facilitated through the current assessment, the purpose of which is to identify, assess, and determine the significance of potential heritage impacts, as well as mitigating actions and responsibilities that can be taken to minimise potential impacts.

The proposed redevelopment is subject to assessment by the Department of Planning, Industry and Environment (DPIE) as a State Significant Development (SSD-359994868). Assessments will be undertaken in accordance with the Secretary's Environmental Assessment Requirements (SEARs) to be submitted to the Minister for Planning and Public Spaces, pursuant to Schedule 1, Clause 14 of the *State Environmental Planning Policy (Planning Systems) 2021*.

The relevant assessment requirement as specified in the issued SEARs is as follows - *Issue 20: Environmental Heritage – Where there are direct or indirect impacts on the heritage significance of items of environmental heritage, provide a Statement of Heritage Impact and Archaeological Assessment (if potential impacts to archaeological resources are identified), prepared in accordance with the relevant guidelines, which assesses any impacts and outlines measures to ensure they are minimised and mitigated.*

3.3.3 Shoalhaven Local Environmental Plan 2014

Table 1 Section 5.10 LEP clauses

Clause	Discussion
Objectives The objectives of this clause are as follows: <ul style="list-style-type: none"> (a) to conserve the environmental heritage of Shoalhaven (b) to conserve the heritage significance of heritage items and heritage conservation areas, including associated fabric, settings and views, (c) to conserve archaeological sites, (d) to conserve Aboriginal objects and Aboriginal places of heritage significance. 	
2) Requirement for consent Development consent is required for any of the following: <ul style="list-style-type: none"> (a) demolishing or moving any of the following or altering the exterior of any of the following (including, in the case of a building, making changes to its detail, fabric, finish or appearance): <ul style="list-style-type: none"> i a heritage item, ii an Aboriginal object, iii a building, work, relic or tree within a heritage conservation area, 	
	The proposed works will not demolish or move any heritage items in the study area or vicinity. The proposed works will not disturb or destroy known Aboriginal or historical archaeological objects or relics. The study area is not located in a conservation area.

Clause	Discussion
<p>(b) altering a heritage item that is a building by making structural changes to its interior or by making changes to anything inside the item that is specified in Schedule 5 in relation to the item,</p> <p>(c) disturbing or excavating an archaeological site while knowing, or having reasonable cause to suspect, that the disturbance or excavation will or is likely to result in a relic being discovered, exposed, moved, damaged or destroyed,</p> <p>(d) disturbing or excavating an Aboriginal place of heritage significance,</p> <p>(e) erecting a building on land:</p> <ul style="list-style-type: none"> i on which a heritage item is located or that is within a heritage conservation area, or ii on which an Aboriginal object is located or that is within an Aboriginal place of heritage significance, <p>(f) subdividing land:</p> <ul style="list-style-type: none"> iii on which a heritage item is located or that is within a heritage conservation area, or. <p>on which an Aboriginal object is located or that is within an Aboriginal place of heritage significance.</p>	<p>This SoHI is required to consider potential impacts to the heritage items in the vicinity of the study area.</p> <p>It is considered that the proposal would not impact the identified heritage significance of any of the heritage items in the vicinity of the study area.</p> <p>Subdivision is not proposed.</p>

(4) Effect of proposed development on heritage significance

The consent authority must, before granting consent under this clause in respect of a heritage item or heritage conservation area, consider the effect of the proposed development on the heritage significance of the item or area concerned. This subclause applies regardless of whether a heritage management document is prepared under subclause (5) or a heritage conservation management plan is submitted under subclause (6).

This SoHI has been prepared to accompany the SSDA application for the proposed works, in order to assist the consent authority in determining the impact upon the heritage listed items in the vicinity of the study area. It is considered the impact on heritage items in the vicinity will be negligible.

(5) Heritage assessment

The consent authority may, before granting consent to any development:

- a) on land on which a heritage item is located, or
- b) on land that is within a heritage conservation area, or
- c) on land that is within the vicinity of land referred to in paragraph (a) or (b),

Require a heritage management document to be prepared that assesses the extent to which the carrying out of the proposed development would affect the heritage significance of the heritage item or heritage conservation area concerned.

This document fulfils this requirement as the subject site is land adjacent to which a heritage item is located

3.4 Heritage Office guidelines

The following table considers a number of impacts that may be involved in any potential redevelopment of the subject site and are addressed in relation to relevant questions posed in the Heritage Office's 'Statement of Heritage Impact' guidelines.

Table 2 Heritage Office guidelines

Question	Discussion
The following aspects of the proposal respect or enhance the heritage significance of the item or conservation area for the following reasons:	The proposal will neither enhance nor detract from the significance of the locally listed heritage items in the vicinity of the study area.

Question	Discussion
	<p>The proposed works will not demolish or move any heritage items in the vicinity of the study area.</p> <p>The scale of the new proposal is in keeping/ consistent with existing hospital structures, including the new Cancer Care development.</p> <p>There are no significant views to or from the study area and to or from heritage items in the vicinity.</p> <p>The proposed works will not disturb or destroy known Aboriginal or historical archaeological objects or relics (Aboriginal assessment has been undertaken by ELA 2022).</p> <p>It is considered that the proposal would not impact the identified heritage significance of any of the heritage items in the study area or vicinity.</p> <p>The proposal will have a substantial positive social and/or economic impact on Nowra by providing essential upgrades to the medical facilities and provide employment opportunities during and after the development process.</p>
<p>The following aspects of the proposal could detrimentally impact on heritage significance.</p> <p>The reasons are explained as well as the measures to be taken to minimise impacts:</p>	<p>There are no identified aspects of the proposal that could detrimentally impact on heritage significance of heritage items in the vicinity of the study area.</p>
<p>The following sympathetic solutions have been considered and discounted for the following reasons:</p>	<p>Several phases of design have been undertaken to address community concerns. No sympathetic solutions have been discounted as the impacts to the heritage significance of the items in the vicinity are negligible.</p>
<p>New development adjacent to a heritage item</p> <p>How does the new development affect views to, and from, the heritage item?</p> <p>What has been done to minimise negative effects?</p> <p>How is the impact of the new development on the heritage significance of the item or area to be minimised?</p> <p>Why is the new development required to be adjacent to a heritage item?</p> <p>How does the curtilage allowed around the heritage item contribute to the retention of its heritage significance?</p> <p>Is the development sited on any known, or potentially significant archaeological deposits?</p> <p>If so, have alternative sites been considered? Why were they rejected?</p> <p>Is the new development sympathetic to the heritage item?</p> <p>In what way (e.g., form, siting, proportions, design)?</p> <p>Will the additions visually dominate the heritage item?</p> <p>How has this been minimised?</p> <p>Will the public, and users of the item, still be able to view and appreciate its significance?</p>	<p>Any new development within the hospital will serve as continuation of the evolution of the medical facility to provide medical services to the Shoalhaven area.</p> <p>Views to and from all the heritage items in the vicinity will not be impacted due to existing hospital structures, existing trees, vegetation and open space of the southern portion of Nowra Park that will be retained. The public, and users of the nearby heritage items will still be able to view and appreciate their significance.</p> <p>There are no known or potential archaeological sites in the study area that would be impacted.</p> <p>There are no direct or indirect impacts to the significance of heritage items in the vicinity.</p> <p>Form, siting, proportion and design has been considered to facilitate the requirements of the hospital while being consistent with existing hospital structures.</p> <p>Trees will be removed only where absolutely necessary and the old growth trees in the southern portion of Nowra Park will be retained. The trees will obscure the views of the new development from the heritage items.</p> <p>The heritage impact of the new development is negligible.</p>

4. Conclusion and Recommendations

CONCLUSIONS

This SoHI has been undertaken to address the SEARs for the development of a new hospital building as well as a new ambulance entry from Shoalhaven Street, new public and servicing accessway off North Street, and separate loading dock entry and mortuary parking off Shoalhaven Street. A range of infrastructure and civil engineering works are proposed as well as demolition of existing structures within the footprint of the new building and/or on the existing hospital campus where the linkway connection is proposed. A number of selected trees will require removal. Other significant trees will be retained and protected.

This report concludes the following:

- The location of the proposed new hospital building is not within the curtilage of a heritage item.
- There are three heritage items in the vicinity of the subject site listed in Schedule 5 of the LEP.
- The Shoalhaven hospital is a listed on the Department of Health s170 register.
- The proposed new building will not encroach on the curtilage of any heritage items.
- No heritage items in the vicinity will not be directly or indirectly impacted by the proposal.
- The new building is proposed to be located on a former portion of Nowra Park that has no archaeological potential.
- There are no significant views to or from any of the heritage items in the vicinity to the study area.
- Form, siting, proportion and design has been considered to facilitate the requirements of the new hospital building and upgraded facilities.
- Continued appreciation of heritage items in the vicinity has not been compromised.
- The heritage impact of the proposal is considered negligible.

No statement of significance has been developed for the Shoalhaven District Memorial Hospital. The inclusion on the NSW Department of Health s170 Register of the hospital site is not related to a particular building or structure, nor is it associated with a particular historic phase in the development or evolution of the hospital site. Rather, the hospital exists as a functional community service. Therefore, any proposed redevelopment that involves construction or demolition of buildings within the hospital site will not impact heritage significance. The hospital will continue to be used as a functional community service and medical facility and will continue to conform to its historical significance “associated with preparing and providing medical assistance and / or promoting or maintaining the wellbeing of humans” (State Heritage Register 2005).

RECOMMENDATIONS

It is recommended that the following measures are implemented to avoid and minimise impact on the surrounding heritage items:

- The location of site storage, parking, compounds, stockpiles etc should not be located within the curtilage of any heritage item.

- The remaining trees, within the portion of Nowra Park to be retained, should be protected from damage during the construction phase. This includes the roots of the trees. Installation of high visibility fencing should ensure inadvertent damage to the trees is avoided.
- If changes are made to the plans prepared by Conrad Gargett April 2022, this SoHI will need to be reviewed to reflect the new designs.
- A standard unexpected finds process should be adopted during works associated with the proposal as a mitigation measure as follows:
 - An 'unexpected heritage find' can be defined as any unanticipated archaeological discovery, that has not been previously assessed or is not covered by an existing approval under the *Heritage Act 1977* (Heritage Act) or *National Parks and Wildlife Act 1974* (NPW Act). These discoveries are categorised as either:
 - Aboriginal objects (archaeological remains i.e.: stone tools),
 - Historic (non-Aboriginal) heritage items (archaeological remains (i.e.: artefacts) or movable objects)
 - Human skeletal remains (reportable deaths, Aboriginal objects or relics)

Unexpected finds policy.

Should any unexpected historical archaeology be uncovered during any future excavation works, the following procedure must be adhered to:

- Stop all work in the immediate area of the item and notify the Project Manager.
- Establish a 'no-go zone' around the item. Use high visibility fencing, where practical. Inform all site personnel about the no-go zone.
- No work is to be undertaken within this zone until further investigations are completed.
- Engage a suitably qualified and experienced Archaeologist to assess the finds.
- The Heritage Council must be notified if the finds are of local or state significance. Additional approvals will be required before works can recommence on site.
- If the item is assessed as not a 'relic', a 'heritage item' or an 'Aboriginal object' by the Archaeologist, work can proceed with advice provided in writing.

Should any unexpected human skeletal remains be uncovered during any future excavation works, the following procedure must be adhered to:

If any human remains are disturbed in, on or under the land, you must:

- not further disturb or move these remains
- immediately cease all work at the particular location
- notify NSW Police
- notify Heritage NSW Environment Line on 131 555 as soon as practicable and provide available details of the remains and their location
- not recommence any work at the particular location unless authorised in writing by Heritage NSW.

5. References

Australia ICOMOS 1999, *The Burra Charter: The Australia ICOMOS Charter for Places of Cultural Significance*, Australia ICOMOS, Burwood (revised 2013).

Godden Mackey Logan Heritage Consultants 2011. Shoalhaven Cancer Centre Heritage Impact Statement. Report prepared for NSW Health Infrastructure

Heritage Office and Department of Urban Affairs & Planning 1996, *NSW Heritage Manual*, Heritage Office and Department of Urban Affairs & Planning (NSW), Sydney.

Heritage Office 2001, *Assessing Heritage Significance*, Heritage Office, Parramatta.

Heritage Office 2002, *Statements of Heritage Impact*, Heritage Office, Parramatta.

Land and Property Department Six Maps: (<https://maps.six.nsw.gov.au/>)

Peter Freeman Pty Ltd 2003 *Shoalhaven Heritage Study 1995-1998*.

Shoalhaven LEP 2014 <https://legislation.nsw.gov.au/view/html/inforce/current/epi-2014-0179#sch.5>

South Coast Register 2001 Hospital Turns Fifty. 20th May 2001.

South Coast Register 2012 Plans Laid for Hospital Health Precinct. 28th November 2012.

South Coast Register 2017 Three decade battle for Nowra's own hospital. South Coast Register. 23rd May 2017.

State Environmental Planning Policy (State and Regional Development) 2011 (SEPP SRD). Schedule 1, Clause 14. <https://legislation.nsw.gov.au/view/html/inforce/current/epi-2011-0511>

State Heritage Register 2005 - *Shoalhaven District Memorial Hospital Accessed. 2019*
< <https://www.environment.nsw.gov.au/heritageapp/ViewHeritageItemDetails.aspx?ID=3540060>>

State Heritage Inventory, Heritage NSW Accessed 21/06/2022: See below for inventory access

Bens Walk including Suspension Bridge and Aboriginal Art Sites
<https://www.hms.heritage.nsw.gov.au/App/Item/ViewItem?itemId=2390790>

Nowra Showground & Sportsground complex
<https://www.hms.heritage.nsw.gov.au/App/Item/ViewItem?itemId=2390784>

St Michael's Roman Catholic Church including two storey Victorian Presbytery, Cemetery and grounds
<https://www.hms.heritage.nsw.gov.au/App/Item/ViewItem?itemId=5065732>

Appendix A : Heritage Listings for Shoalhaven LEP 2014 heritage items & Shoalhaven District Memorial Hospital – s170 Department of Health

Item Details

Name

Ben's Walk including Suspension Bridge and Aboriginal Art Sites

Other/Formal Names

Address

West and Worrigee Streets NOWRA NSW 2541

Local Govt Area

Shoalhaven

Item Classification

Item Type

Complex / Group

Item Group

Landscape - Natural

Item Category

Other - Landscape - Natural

Statement Of Significance

High social value as an early form of recreational activity. Local significance (Shoalhaven).

Assessed Significance Type

Local

Endorsed Significance

Local

Date Significance Updated

10/16/2001



Listings

Listing Name	Listing Date	Instrument Name	Instrument No.	Plan No.	Gazette Page	Gazette Number
Local Environmental Plan	13/0/2007					
Heritage study		Ben's Walk & Aboriginal Art Sites	NB076			
Local Environmental Plan	22/0/2014	Shoalhaven Local Environmental Plan 2014	406			

Heritage Item ID

2390790

Source

Local Government

Location

Addresses

Records Retrieved: 1

Street No	Street Name	Suburb/Town/Postcode	Local Govt. Area	LALC	Parish	County	Electorate	Address Type
	West and Worrigeer Streets	NOWRA/NSW/2541	Shoalhaven	Unknown			Unknown	Primary Address

Description

Designer Builder/Maker

Construction Year Start & End Circa Period
NO Unknown

Physical Description Updated

The track commences at the Shoalhaven River Bridge and follows the south bank of the river via Paringa Park to Hanging Rock and the Showground. From Hanging Rock the track descends the cliff face and follows the Nowra Creek beneath huge sandstone boulders and eroded shelves. A suspension bridge has been erected to provide a looped walk on both sides of the creek and to give access to Depot Farm Recreation Reserve and picnic area. The complete track provides a return walk of about 5.5kms and takes about 2 hours.

Highlights along the walk include Paringa Park, an old sandstone quarry and also the location during the second world war of the timber framed boat building industry. Hanging Rock is 46.25 metres above the river and is used as a look out.

Numerous caves and shelters in the vicinity of hanging rock, the site of the original suspension bridge, Depot Farm and Nowra Creek which is an extension of Bens Walk contains Aboriginal Rock paintings and cascades.

Physical Condition Updated

Modifications And Dates

Further Comments

Date: 1890 (1st) Historical Date: 1876-1900

History

Historical Notes or Provenance

Updated

This walking track retraces part of a walk which was established during the depression years by Ben Walsh. It has been planned and constructed by the Crown Lands Office in co-operation with Shoalhaven City Council and other interested persons and organisations. Ben Walsh appreciated the beauty of the Australian Bush and encouraged others to enjoy it as well.

The son of a botanist and son of the founder of the Terara Hardware Store of P Walsh & Sons in 1877, Ben Walsh was a trustee of the Nowra Showground in the 1920's. During the depression years there were many itinerants living in the shelter of sandstone caves below the showground. Ben arranged a grant and employed these men in the construction of a walking track below Hanging Rock

Hanging rock has been a prominent landmark of Nowra since the town was established. It is 46.25m above the river and is a superb lookout. The original suspension bridge over Nowra Creek was built in the 1890's and provided access to river farms west of Nowra. A second suspension bridge built in the 1930's remained in use until the mid 1950's. The Department of Lands together with Shoalhaven City Council and the South Nowra Rotary Club have rebuilt this bridge on the same spot to give access to Depot Farm Reserve. It is 49m long and 7m above the creek.

The area on the far side of Nowra Creek, over the suspension bridge, was called "The Depot" as early as the 1850's, when it was occupied by William Spain. The Depot Farm was Nowra's first rifle range before it was purchased by John and Pam Walsh (John, a nephew of Ben Walsh). In 1976 Council acquired 15.7 hectares of the property for a public reserve. Nowra Apex Club assisted in the development of picnic facilities on the Reserve.

Historic Themes

Records Retrieved: 3

National Theme	State Theme	Local Theme
Developing local, regional and national economies	Aboriginal pre-contact	Unknown
Developing local, regional and national economies	Science	Unknown
Developing local, regional and national economies	Commerce	Unknown

Assessment

Criteria a)		
Historical Significance	Include	Exclude
Criteria b)		
Historical Association Significance	Include	Exclude
Criteria c)		
Aesthetic/Technical Significance	Include	Exclude
Criteria d)		
Social/Cultural Significance	Include	Exclude
Criteria e)		
Research Potential	Include	Exclude
Criteria f)		
Rarity	Include	Exclude
Criteria g)		
Representative	Include	Exclude
This item is assessed as socially representative locally.		
Integrity/Intactness		Updated

References

References

Records Retrieved: 5

Title	Author	Year	Link	Type
Nowra Showground Plan of Management Crown Reserve No. D580011	Shoalhaven City Council	2007		Written
The Shoalhaven River Bank, Nowra to Regatta Creek : A Field Study. Uni.of New England Diploma Thesis.	Robyn Florance	1993		Written
Walking the South Coast	Graeme Barrow	1986		Written
500 Places and Names of Shoalhaven	Alan Clark (Ed)			Written
Shoalhaven Bushwalks	Shoalhaven City Council			Written

Heritage Studies

Records Retrieved: 1

Title	Year	Item Number	Author	Inspected By	Guidelines Used
Shoalhaven City Council Heritage Study 1995-1998	1998	2390790	Peter Freeman Pty Ltd		Yes

Procedures / Workflows / Notes

Records Retrieved: 0

Application ID / Procedure ID	Section of Act	Description	Title	Officer	Date Received	Status	Outcome
No Results Found							

Management

Management

Records Retrieved: 3

Management Category	Management Name	Date Updated
Recommended Management	Prepare or include in a Conservation Policy	
Recommended Management	Carry out interpretation, promotion and/or education	
Recommended Management	Prepare a maintenance schedule or guidelines	

Management Summary



Caption: Ben's Walk & Aboriginal Art Sites

Photographer: NULL

Copyright Owner: No Credit

Date: 7/1/2020 12:00:00 AM



Caption: Ben's Walk & Aboriginal Art Sites

Photographer: NULL

Copyright Owner: No Credit

Date: 7/1/2020 12:00:00 AM

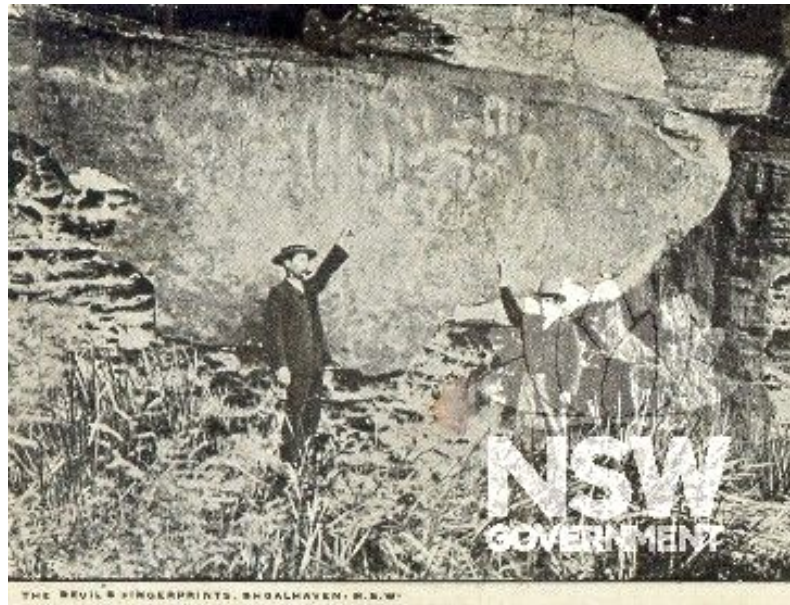


Caption: Ben's Walk & Aboriginal Art Sites - Picturesque
Snapshots of Nowra c1950s

Photographer: NULL

Copyright Owner: No Credit

Date: 7/1/2020 12:00:00 AM



Caption: Ben's Walk & Aboriginal Art Sites

Photographer: NULL

Copyright Owner: No Credit

Date: 7/1/2020 12:00:00 AM

Item Details

Name

Nowra Showground & Sportsground Complex

Other/Former Names

Address

West Street NOWRA NSW 2541

Local Govt Area

Shoalhaven

Group Name

Junction Street Heritage Conservation
Streetscape

Item Classification

Item Type

Complex / Group

Item Group

Recreation and Entertainment

Item Category

Playing Ground/ Field

Statement Of Significance

As a focus for agricultural, sporting and community gatherings since 1886, it is of high social significance.

The showground is held in high esteem by the district community as a venue for the annual show since 1886, and sporting and social events. The War Memorial entry gates are of special significance as a tangible reminder of Australia's participation in various international war arenas, especially World War One.

It is associated with early pioneers of the Nowra area including members of the Shoalhaven Agricultural & Horticultural Association, especially James Monaghan, the first secretary of this association in 1874.

As a showground complex the aesthetic qualities of built structures such as the Federation Pavilion, the Federation Gothic War Memorial Gates, the rustic qualities of the Horse and Cattle Area, the splendid stands of mature trees and the spectacular setting by the Shoalhaven River and views from Hanging Rock Lookout combine to give it landmark qualities.

The showground with its pavilion overlooking the oval and the adjoining Horse and Cattle area is a fine example of a design of a regional showground. The level of intactness of the pavilion and the war memorial gates display examples of architectural design characteristics of the time.

Local significance (Shoalhaven).

Assessed Significance Type

Local

Endorsed Significance

Local

Date Significance Updated

2/15/2012



Listings

Listing Name	Listing Date	Instrument Name	Instrument No.	Plan No.	Gazette Page	Gazette Number
Local Environmental Plan	22/0/2014	Shoalhaven Local Environmental Plan 2014	405			
Heritage study		Nowra Showground & Sportsground Complex	NB069			
Local Environmental Plan	13/0/2007					

Heritage Item ID	Source
2390784	Local Government

Location

Addresses

Records Retrieved: 2

Street No	Street Name	Suburb/Town/Postcode	Local Govt. Area	LALC	Parish	County	Electorate	Address Type
	West Street	NOWRA/NSW/2541	Shoalhaven	Unknown			Unknown	Primary Address
	West Street	NOWRA/NSW/2541	Shoalhaven	Unknown			Unknown	Primary Address

Description

Designer	Builder/Maker
----------	---------------

Construction Year Start & End	Circa	Period
1885 - 1885	N0	1851 to 1900

Physical Description

Updated

Showgrounds and sportsground including grove of Hills Figs on south side of pavilion. Stunning view from rear of pavilion to river and escarpment.

Components of the Showground Complex include:

- The Grandstand which is the dominant element in the well treed grounds of the Nowra Parklands.
- The Federation style Grandstand overlooks the central sports/events oval of the showground.
- Victorian masonry entrance gatehouse now men's toilet.
- Monaghan Memorial Fountain
- Hanging Rock Lookout; and
- Inter war castellated gateway.
- Mature Eucalypts, Spotted Gums etc.

Physical Condition

Updated

Modifications And Dates

A number of additional buildings have been constructed within the Parklands including the Woodchop arena and additional grandstanding and the Youth Hall. Some of these buildings are unsympathetic to the significance of the showground complex and particularly the woodchop tower and has had an adverse impact on the entrance drive to Hanging Rock Lookout.

Further Comments

Historical Period:1876-1900

History

Historical Notes or Provenance

Updated

The area on the foreshores of the Shoalhaven River at Nowra were used by the general public as picnic and recreation areas for many years before it became an official public Reserve. The area set aside by the Crown for recreation purposes comprised all that land between the bridge over the Shoalhaven River and the Braidwood Road totalling some 637 1/2 acres. This was officially dedicated as a Recreation and Showground Reserve in 1881.

These grounds were secured by the Shoalhaven Pastoral Agricultural and Horticultural Association in 1884. Agricultural shows were formerly held in the grounds of Terara Estate until the 1870 floods drove settlers from the area.

The first agricultural show at Nowra was held in 1885. In 1901 the SPAHA began raising funds for the pavilion, which opened in 1905. Until 1937 the Showground was under control of the Trustees, but owing to the difficulty in obtaining finance and Government grants, complete control of the area was handed over to Council on the 20th August of that year. This enabled Council to extend the area half way to Plunkett Street, construct a new cattle judging ring and horse stalls were built and the main ring was enlarged to provide for a suitable trotting track. Council purchased the remaining land extending to Plunkett Street and again repositioned the cattle judging ring to where it remains today.

The old bull stalls built in 1914 were eventually converted into a publican's booth to serve the southern end of the ground. This bar remained until it was demolished and a new bar and toilet block erected in 1972-3.

The area had been used as a camping area from an early date and in 1929 picnic tables and benches were provided for the use of locals and a modern cottage was erected for the manager. In 1958 the camping area was closed and Council made a new area available at Gray's Beach on the northern bank of the river.

Thus the whole area reverted to its original purpose and it wasn't until 1960 that a positive plan for the future development of the Recreation area was approved, some 11 sporting bodies taking part in the final discussions. These provided for improved trotting track, show pavilions and halls as well as improved amenities for patrons of the ground. Trotting had always been a feature of the local shows. The removal of the racing facilities from the Showground together with the trotting and greyhound coursing to South Nowra Complex in 1976 leaves trotting only at the annual shows.

A lone pine seedling from Gallipoli has been planted in the showgrounds.

Historic Themes

Records Retrieved: 4

National Theme	State Theme	Local Theme
Developing cultural institutions and ways of life	Transport	Unknown
Developing cultural institutions and ways of life	Pastoralism	Unknown
Developing local, regional and national economies	Science	Unknown
Developing local, regional and national economies	Commerce	Unknown

Assessment

Criteria a)		
Historical Significance	Include	Exclude
The showground is historically significant for its connection with early pioneers of the Nowra area including members of the Shoalhaven Agricultural & Horticultural Association, especially James Monaghan, the first secretary of this association in 1874.		
Criteria b)		
Historical Association Significance	Include	Exclude
The item has aesthetic significance due to its outstanding natural setting with views over the shoalhaven River and to the Cambewarra escarpment and its treed setting. The pavilion is a good local example of Federation architecture.		
Criteria c)		
Aesthetic/Technical Significance	Include	Exclude
The Showground has aesthetic significance from the quality of the built structures such as the Federation Pavilion, the Federation Gothic War Memorial Gates and the rustic qualities of the horse and cattle area. The splendid stands of mature trees and the spectacular setting by the Shoalhaven River and views from Hanging Rock Lookout combine to give it landmark qualities.		
Criteria d)		
Social/Cultural Significance	Include	Exclude
As a focus for agricultural, sporting and community gatherings since 1886, it is of high social significance.		
Criteria e)		
Research Potential	Include	Exclude
Criteria f)		
Rarity	Include	Exclude
Criteria g)		
Representative	Include	Exclude
This item is assessed as aesthetically representative locally. This item is assessed as historically representative locally. This item is assessed as socially representative locally.		
Integrity/Intactness	Updated 02/17/2012	

References

References

Records Retrieved: 10

Title	Author	Year	Link	Type
Nowra Showground Plan of Management Crown Reserve No. D580011 Council Reserve Nos. CNO403 & CNO405	Shoalhaven City Council	2007		Written
Nowra Showground Plan of Management Crown Reserve No. D580011 Council Reserve Nos. CNO403 & CNO405	Shoalhaven City Council	2007		Written
The Nowra Showground Conservation Management Plan	Otto Cserhalmi & Partners Pty Ltd	2003		Written
The Nowra Showground Conservation Management Plan	Otto Cserhalmi & Partners Pty Ltd	2003		Written
Settlement in the South	R G Antill	1982		Written
Settlement in the South	R G Antill	1982		Written
Illawarra Region Historic Buildings and Sites.	A C Ali	1981		Written

Illawarra Region Historic Buildings and Sites.	A C Ali	1981		Written
Sites Used During Second World War	Robyn Florance			Written
Sites Used During Second World War	Robyn Florance			Written

Heritage Studies

Records Retrieved: 2

Title	Year	Item Number	Author	Inspected By	Guidelines Used
Shoalhaven City Council Heritage Study 1995-1998	1998	2390784	Peter Freeman Pty Ltd	Y	Yes
Shoalhaven City Council Heritage Study 1995-1998	1998	2390784	Peter Freeman Pty Ltd	Y	Yes

Procedures / Workflows / Notes

Records Retrieved: 0

Application ID / Procedure ID	Section of Act	Description	Title	Officer	Date Received	Status	Outcome
No Results Found							

Management

Management

Records Retrieved: 1

Management Category	Management Name	Date Updated
Recommended Management	No Action, follow existing management controls	

Management Summary



Caption: Nowra Showground and Sportsground Complex

Photographer: NULL

Copyright Owner: No Credit

Date: 7/1/2020 12:00:00 AM



Caption: Nowra Showground and Sportsground Complex

Photographer: NULL

Copyright Owner: No Credit

Date: 7/1/2020 12:00:00 AM



Caption: Nowra Showground and Sportsground Complex

Photographer: NULL

Copyright Owner: No Credit

Date: 7/1/2020 12:00:00 AM

Item Details

Name

St Michael's Roman Catholic Church including two storey Victorian Presbytery, Cemetery and grounds

Other/Former Names

Address

20 North Street NOWRA NSW 2541

Local Govt Area

Shoalhaven

Group Name

Item Classification

Item Type

Complex / Group

Item Group

Religion

Item Category

Church

Statement Of Significance

Assessed Significance Type

Local

Endorsed Significance

Local

Date Significance Updated

11/24/2017

Listings

Listing Name	Listing Date	Instrument Name	Instrument No.	Plan No.	Gazette Page	Gazette Number
Local Environmental Plan	22/0/2014	Shoalhaven Local Environmental Plan 2014	378			

Heritage Item ID

5065732

Source

Local Government

Location

Addresses

Records Retrieved: 2

Street No	Street Name	Suburb/Town/Postcode	Local Govt. Area	LALC	Parish	County	Electorate	Address Type
20	North Street	NOWRA/NSW/2541	Shoalhaven	Unknown			Unknown	Primary Address
20	North Street	NOWRA/NSW/2541	Shoalhaven	Unknown			Unknown	Primary Address

Description

Designer	Builder/Maker							
Construction Year Start & End	Circa	Period						
	N0	Unknown						
Physical Description							Updated	
Physical Condition							Updated	
Modifications And Dates								
Further Comments								

History

Historical Notes or Provenance

Updated

Historic Themes

Records Retrieved: 0

National Theme	State Theme	Local Theme
No Results Found		

Assessment

Criteria a)		
Historical Significance	Include	Exclude
Criteria b)		
Historical Association Significance	Include	Exclude
Criteria c)		
Aesthetic/Technical Significance	Include	Exclude
Criteria d)		
Social/Cultural Significance	Include	Exclude
Criteria e)		
Research Potential	Include	Exclude
Criteria f)		
Rarity	Include	Exclude
Criteria g)		
Representative	Include	Exclude
Integrity/Intactness		Updated

References

References

Records Retrieved: 0

Title	Author	Year	Link	Type
No Results Found				

Heritage Studies

Records Retrieved: 0

Title	Year	Item Number	Author	Inspected By	Guidelines Used
No Results Found					

Procedures / Workflows / Notes

Records Retrieved: 0

Application ID / Procedure ID	Section of Act	Description	Title	Officer	Date Received	Status	Outcome
No Results Found							

Management

Management

Records Retrieved: 0

Management Category	Management Name	Date Updated
No Results Found		

Management Summary

SHOALHAVEN DISTRICT MEMORIAL HOSPITAL

Item details

Name of item:	SHOALHAVEN DISTRICT MEMORIAL HOSPITAL
Type of item:	Complex / Group
Primary address:	Shoalhaven Street, Nowra, NSW 2540
Parish:	NOWRA
County:	ST VINCENT
Local govt. area:	Shoalhaven

All addresses

Address	Suburb	LGA	Parish	County	Type
Shoalhaven Street	Nowra	Shoalhaven	NOWRA	ST VINCENT	Primary Address
Scenic Road	Nowra	Shoalhaven	-	-	Alternate Address

Owner/s

Organisation Name	Owner Category	Date Ownership Updated
NSW Department of Health	State Government	20 July 2005

Historic themes

Australian theme (abbrev)	New South Wales theme	Local theme
3. Economy-Developing local, regional and national economies	Health-Activities associated with preparing and providing medical assistance and/or promoting or maintaining the well being of humans	(none)

Listings

Heritage Listing	Listing Title	Listing Number	Gazette Date	Gazette No.	Gazette Page
Heritage Act - s.170 NSW State agency heritage register	Dep. Of Health s.170 Register	-	-	-	-

References, internet links & images

None

Data source

The information for this entry comes from the following source:

Name: State Government

Database number: 3540060

