	MANUAL TYPE TRANSPORT EMERGENCY RESPONSE PLAN (TERP)	Document Number MG-TRAN-0039
	Section	Form Title Manildra Group TERP


MANILDRA GROUP

TRANSPORT EMERGENCY RESPONSE PLAN

(TERP)



Revision No. 1.0.A	Issue Date: 18-May-2022	CONTROLLED (Uncontrolled When Printed)
Approved by: National Manager Rail, Strategic Planning and Development.		Page 1 of 9

	MANUAL TYPE TRANSPORT EMERGENCY RESPONSE PLAN (TERP)	Document Number MG-TRAN-0039
	Section	Form Title Manildra Group TERP

1. Introduction

A Transport Emergency Response Plan (TERP) is required to meet the requirements of:

- Regulation 14 of the Dangerous Goods (Road and Rail Transport) Regulation
- Protection of the Environment Operations (General) amendment (Pollution Incident Response Management Plans) Regulation 2012


Manildra Group manufactures Ethanol (UN1170) at the Bomaderry site for the Petrochemical and Food industries for both the Domestic and Export market. A well-constructed TERP would prevent a minor incident from becoming a disaster, save lives, prevent injuries and minimise damage to property and the environment.

This Transport Emergency Response Plan (TERP) outlines the first response procedures and processes for Manildra Group Transport in the event of any emergency or incident involving a Manildra vehicle or contracted party.

2. Objectives of a Transport Emergency Response Plan

- Ensure all incidents are acted on using industry best practices.
- Minimise any adverse effects on people, damage to property or harm to the environment in a transport emergency.
- Facilitate a rapid and effective emergency response and recovery.
- Provide assistance to emergency and security services; and
- Communicate vital information to all relevant persons involved in the transport emergency (both internal personnel and external agencies) with a minimum of delay.

Revision No. 1.0.A	Issue Date: 18-May-2022	CONTROLLED (Uncontrolled When Printed)
Approved by: National Manager Rail, Strategic Planning and Development.		Page 2 of 9

	MANUAL TYPE TRANSPORT EMERGENCY RESPONSE PLAN (TERP)	Document Number MG-TRAN-0039
	Section	Form Title Manildra Group TERP

3. Plan activation

3.1 Situation appraisal

In the event of an accident or incident involving dangerous goods, drivers are required to appraise the situation and report by telephone as follows: -

3.2 External alert mechanism

If there is an immediate threat to life, health, or the environment, call:

1. “000” POLICE OR FIRE AND RESCUE

For pollution concerns phone: -

- EPA – 131 555
- SafeWork - 131050
- NSW Fire and Rescue 000

2. In all other cases first ring the Manildra Group Ethanol Control Room.


1. 24HR Contact 02 44 238229

3.2 Internal alert mechanism

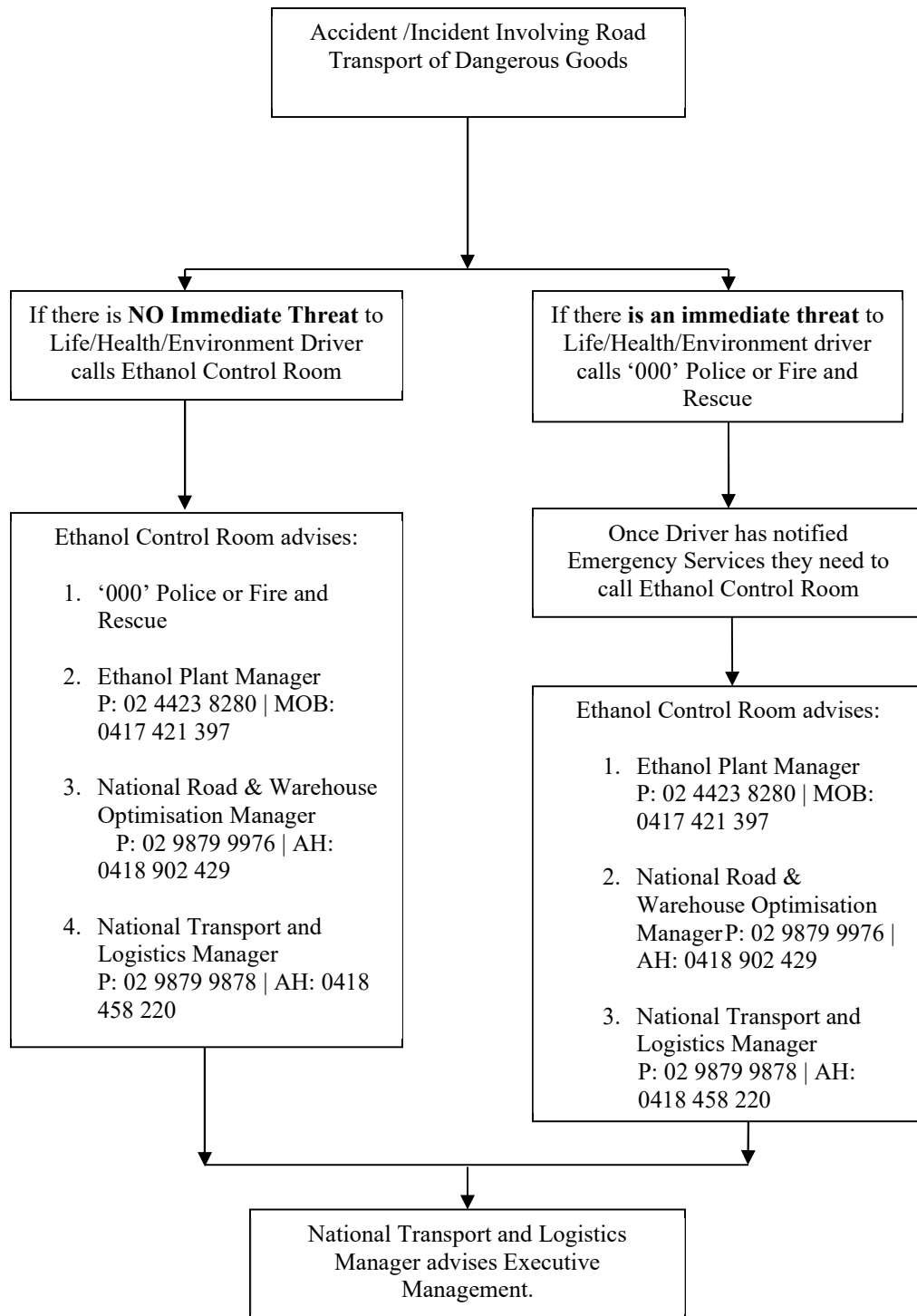
Business hours or after-hours telephone numbers as shown below.

1. Manildra Group Ethanol Control Room
02 4423 8229 24HR
2. Ethanol Plant Manager
P: 02 4423 8280 | MOB: 0417 421 397
3. National Road & Warehouse Optimisation Manager
P: 02 9879 9976 | MOB: 04818 902 429
4. National Transport and Logistics Manager
P: 02 9879 9878 | MOB: 0418 458 220


Revision No. 1.0.A	Issue Date: 18-May-2022	CONTROLLED (Uncontrolled When Printed)
Approved by: National Manager Rail, Strategic Planning and Development.		Page 3 of 9

	MANUAL TYPE TRANSPORT EMERGENCY RESPONSE PLAN (TERP)	Document Number MG-TRAN-0039
	Section	Form Title Manildra Group TERP

3.4 Plan activation flow chart



Revision No. 1.0.A	Issue Date: 18-May-2022	CONTROLLED (Uncontrolled When Printed)
Approved by: National Manager Rail, Strategic Planning and Development.		Page 4 of 9

	MANUAL TYPE TRANSPORT EMERGENCY RESPONSE PLAN (TERP)	Document Number MG-TRAN-0039
	Section	Form Title Manildra Group TERP

4. Information provision


The following information is to be provided by the driver when reporting a road transport accident or incident involving dangerous goods.

- A. Your Name _____
How can we contact you? _____
Where are you? _____
Are there any injured persons? _____
Have you notified anybody? _____
What happened? Rollover, Collision, Fire, Spill/Leak, Explosion etc.

- B. What substances are involved? _____
Names: _____

UN Numbers: _____
Quantities: _____
Types of containers: _____
- C. Are there any threats to persons/property/environment, eg. Likelihood of fire/explosion, public exposure, environmental contamination? _____

**THE ACCURACY OF THE ABOVE INFORMATION IS VITAL IN
PLANNING AN EFFECTIVE RESPONSE TO AN INCIDENT**

	MANUAL TYPE TRANSPORT EMERGENCY RESPONSE PLAN (TERP)	Document Number MG-TRAN-0039
	Section	Form Title Manildra Group TERP


5. Other Requirements

5.1 The basic rules

A vehicle carrying more than a specified minimum amount of goods classified as Dangerous Goods by the ADG Code must:

1. Display Dangerous Goods Class labels front and rear.
2. If carrying bulk, display Emergency Information Panels on both side and rear.
3. Have fitted in an accessible position, the appropriate fire extinguisher(s) displaying a current service tag.
4. Have fitted in the driver's cabin, a special holder to carry the Initial Emergency Response Guide (the IER Guide), or Emergency Procedure Guides (EPG's) and Dangerous Goods Documentation.
5. Carry Transport Documentation and either the Initial Emergency Response Guide or EPG's appropriate to the load. **DON'T LEAVE THE PICK-UP POINT WITHOUT THEM.**
6. Carry protective clothing and equipment, appropriate to the hazards of the load (see section 5.4 on page 10).
7. When performing product transfers, follow applicable procedures at all times and wear appropriate personal protective equipment when required.
8. Carry 3 reflective breakdown triangles.
9. Carry only compatible loads, ensure products are labelled and packaged in accordance with Code, and ensure goods are suitably restrained to prevent movement and damage. All vehicles must be FULLY gated or equivalent for the carriage of packaged dangerous goods.
11. Ensure trailers, rigids or road tankers carrying dangerous goods in bulk are licensed and driven by a bulk licensed driver.
12. Carry a spill kit that is appropriate to the type of Dangerous Goods being transported.

Revision No. 1.0.A	Issue Date: 18-May-2022	CONTROLLED (Uncontrolled When Printed)
Approved by: National Manager Rail, Strategic Planning and Development.		Page 6 of 9

	MANUAL TYPE TRANSPORT EMERGENCY RESPONSE PLAN (TERP)	Document Number MG-TRAN-0039
	Section	Form Title Manildra Group TERP

5.2 Fire extinguisher types, rating, and number required for vehicles carrying dangerous goods

DANGEROUS GOODS CARRIED	10B Dry Powder Mounted in cabin	20B Foam	30B Dry Powder	60B Dry Powder	80B Dry Powder
Packaged Dangerous Goods			1		
Non flammable Dangerous Goods in bulk, either	1		2		
or	1			1	
Flammable liquids in bulk on a vehicle with a capacity less than or equal to 10,000L or kg, either	1		2		
or	1			1	
Flammable liquids in bulk on a vehicle with a capacity greater than 10,000L or kg, either	1			2	
or	1	1			1

	Not Required
--	--------------


On vehicles, fire extinguisher(s) shall be mounted so that –

- (a) they are secured by means of a quick release attachment,
- (b) they are located to be readily accessible for use,

In addition, for Road Tank Vehicles, the extinguisher(s) must be mounted as follows;

- (c) remote from hose connection points,
- (d) where two fire extinguishers are required one is to be located on the left rear side with the other on the right hand side towards the front wherever practicable,
- (e) where one fire extinguisher is required, it should be located on the discharge side of the tanker wherever practicable.

Revision No. 1.0.A	Issue Date: 18-May-2022	CONTROLLED (Uncontrolled When Printed)
Approved by: National Manager Rail, Strategic Planning and Development.		Page 7 of 9

	MANUAL TYPE TRANSPORT EMERGENCY RESPONSE PLAN (TERP)	Document Number MG-TRAN-0039
	Section	Form Title Manildra Group TERP

5.3 Emergency information

Vehicles carrying Dangerous Goods in placard load quantities (marking quantities) must have a properly labelled Emergency Information Holder attached to the inside of the Driver's cabin door, or other conspicuous position adjacent to the door. These are to hold transport documentation and emergency information (EPGS) ONLY.

EPG's give advice on the most appropriate emergency actions to the Driver and anyone on site at a vehicle accident or other dangerous goods transport incident.

Single page EPG's appropriate to the load being carried or HB76 2010 Dangerous Goods – Initial Emergency Response Guide (book) published by Standards Australia.


If EPG cards are used, at least 2 are required:

1. **“Vehicle Fire”**;
- provided by the vehicle owner or prime contractor.
2. Either “Product Specific” or “Group Text” EPG's, covering each type of Dangerous Good carried;
- provided by the consignor.

5.4 Protective clothing and equipment on road vehicles carrying dangerous goods

				CHEMICALLY RESISTANT					
CLASS OR SUB-RISK	EYEWASH KIT	GAS TIGHT GOGGLES OR FULL FACE SHIELD	SCBA OR REBREATHING APPARATUS	GLOVES OR GAUNTLETS	SUIT OR COVERALLS	BOOTS	THERMALLY INSULATING GAUNLETS OR GLOVES	ANY ELECTRIC TORCH	INTRINSICALLY SAFE ELECTRIC TORCH
2.1	Yes	For bulk and cryogenic liquids only					Yes		Yes
2.2	Yes	For bulk and cryogenic liquids only					Yes	Yes	
2.3	Yes	Yes	See Note 1				Yes	Yes	
3	Yes			Yes					Yes
4	Yes			Yes					Yes
5.1 Solids	Yes			Yes				Yes	
5.1 Liquids	Yes	Yes		Yes	Yes	Yes		Yes	
5.2	Yes	Yes		Yes	Yes	Yes			Yes
6.1	Yes	Yes	See Note 2	Yes	Yes	Yes		Yes	
8	Yes	Yes	See Note 2	Yes	Yes	Yes		Yes	
9	Yes			Yes				Yes	

Revision No. 1.0.A	Issue Date: 18-May-2022	CONTROLLED (Uncontrolled When Printed)
Approved by: National Manager Rail, Strategic Planning and Development.		Page 8 of 9

	MANUAL TYPE TRANSPORT EMERGENCY RESPONSE PLAN (TERP)	Document Number MG-TRAN-0039
	Section	Form Title Manildra Group TERP

Notes:

1. SCBA if required by other legislation where the driver attends to loading or transfer of goods. Otherwise short term breathing apparatus for escape purposes.
2. Where the dangerous goods may give rise to harmful vapours, gases or dust: SCBA may be required by other legislation where the driver attends to loading or transfer of goods. Otherwise short term breathing apparatus for escape purposes.

REMEMBER...

Dangerous Goods and EPA legislation exists to ensure that the appropriate standards are maintained with respect to the transport of dangerous goods and any potential threats to persons, property and the environment are minimised.

If you breach the ADG Code or regulations or EPA Legislation, you may be fined heavily. Some offences mean the Driver and Company are fined.

WE ARE HELD “JOINTLY, SEVERALLY AND COLLECTIVELY RESPONSIBLE”.

DO:

Ask questions if in doubt.
 Make sure transport documents accurately reflect the load carried.
 Make sure you read the EPG's before starting.
 Check you have the correct Class labels (and EIP's for Bulk).
 Check load compatibility before and after loading.
 Make sure load is properly secured.
 Make sure weather protection is adequate.
 Ensure EPG's Shipping Documentation are in the Holder.

DON'T:

Accept damaged or leaking packages.
 Leave dangerous goods placarding on an empty vehicle.
 Fool around or take chances while loading, unloading or on the road.
 Smoke whilst loading or unloading, or when carrying Classes or Sub-risks 1, 2.1, 3, 4 or 5.

A Vehicle Checklist

Check the following before leaving the depot or pick-up point:-

- Vehicle labels – Front and Rear
- Fire Extinguisher(s) (see page 8)
- DG Kit is sealed and contents are within use by date (see page 8)
- Emergency Information Holder on driver's door or conspicuous position within cabin

‘Vehicle Fire’ EPG and
 EPG Cards for products carried

- Correct transport documentation provided and located within Emergency Information Holder

Revision No. 1.0.A	Issue Date: 18-May-2022	CONTROLLED (Uncontrolled When Printed)
Approved by: National Manager Rail, Strategic Planning and Development.		Page 9 of 9