





# Hospital ahead on waiting times

By Thom Klein

KEMPSEY District Hospital has maintained its good record for emergency access and elective surgery.

It is ahead of the State and regional averages on waiting times for its emergency department.

Statistics published by the Bureau of Health Information for the July to September quarter show the Kempsey facility is well ahead of the NSW average of 69 per cent on the National Emergency Access Target, with a rate of 79 per cent.

This is the best in the Mid North Coast Local Health Service area,

which includes Coffs Harbour, Port Macquarie and Taree.

Data was collected during the three-month period ending September 30, for triage in five categories – two, imminently life-threatening (e.g. chest pain, burns); three, potentially life-threatening (e.g. moderate blood loss, dehydration); four, potentially serious (e.g. sprained ankle, earache); and five, less urgent (e.g. cuts, abrasions).

Category one triage cases are deemed immediately life-threatening, which would involve the patient being taken to major hospitals, such as John Hunter, at Newcastle.

Between July and September,

there were 539 triage two cases at Kempsey District Hospital, up from 468 during the same period in 2011.

The median time for the start of treatment for these was nine minutes, the same as last year.

There were 2119 triage three cases (up from 2061) and a median treatment time of 20 minutes, from 21 minutes.

Emergency department staff treated 2066 triage four patients (up from 1915) in a median time of 23 minutes (compared to 25 minutes in 2011; and 414 triage five patients (from 303), in a median of 19 minutes (compared to 23 minutes last year).

## Health chief praises staff dedication

THE chief executive of the Mid North Coast Local Health District has welcomed the results of the Bureau of Health Information report.

"We've had an 8 per cent increase in activity through the emergency department, compared to 4 per cent across NSW," he said.

"There has been an increase in the waiting list due to (the introduction of) network surgery for the Port Macquarie, Wauchope and Kempsey hospitals, and there are more operations being carried out on patients from elsewhere in the (health) district.

"There has been a 10 per cent increase in recurrent funding, up \$382,000 on last year to over \$3 million."

Stuart Dowrick said waiting times for elective surgery for July to September this year had been on a par with the same period in 2011.

"The staff at Kempsey should be proud of the

(Bureau of Health Information) results," he said.

"The statistics underline the dedication of the great staff and they'll continue to work together to improve the delivery of service at the hospital."

Mr Dowrick said the data was positive news and also helped health officials to gauge areas requiring improvement.

"One area of improvement would be in the recruitment of permanent medical staff," he said.

"The emergency department and the hospital (as a whole) relies on locums, who do assist very well in the short term.

"It would be better to have permanent staff."

Mr Dowrick said appointing more permanent clinical staff would benefit the budget, and the working relationships with nursing staff.



**Service delivery:** Kempsey District Hospital's emergency staff have improved on waiting times and patient access, as recorded in the Bureau of Health Information's quarterly report for July to September 2012

## Green urges planning law awareness

CR Betty Green says it is vital that land and business owners take an interest in the new Kempsey 2012 Local Environment Plan (LEP).

The council is running information sessions today to inform people about the plan.

The Kempsey Shire 2012 describes in detail how anybody can use their land - rural or urban - and what they can and cannot do with it.

"It is vitally important that you acquaint yourself with this plan," Cr

Green said.

"Even if nothing has changed, which will be more than likely, it is up to you find out.

"This document is probably the most important planning instrument in Kempsey's history."

The Kempsey LEP 2012 brings the shire into line with other local government areas across NSW under a common planning framework.

Full details of the plan are available at the council chambers and on the website at [kempsey.nsw.gov.au](http://kempsey.nsw.gov.au)

"There are many fact sheets and answers to frequently asked questions as well as updated maps and all the information you need to see how the new plan affects you," Cr Green said.

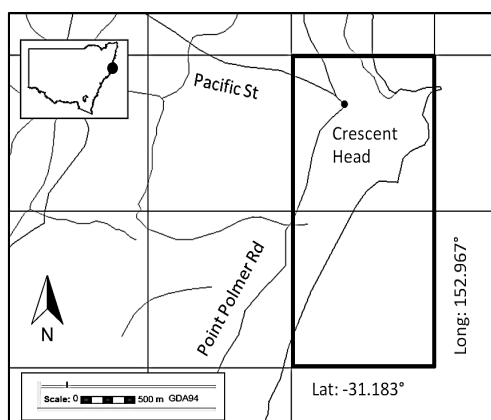
The Kempsey Shire Council LEP 2012 information sessions will be held today, at the council chambers in Tozer Street, from 2pm until 4pm, and again from 5.30pm to 7.30pm.

### EXPLORATION LICENCE APPLICATION

Notice is given in accordance with Section 13A of the Mining Act 1992 and Clause 15 of the Mining Regulation 2010 that Exploration Licence Application No 4711 for Group 10, mineral sands, has been lodged with NSW Trade & Investment by China Australia Mining Pty Ltd, ABN 125 784 189, over an area of 2 units, centred about 1.5 kilometres south west of the town of Crescent Head, as shown on the diagram below.

The Exploration Licence Application is Low Impact (Section 32A) and has been submitted to allow for the exploration and potential removal and rehabilitation of above ground waste dumps left from former mineral sand mining operations in the area. Further information regarding this application can be obtained from either James Williams, phone number 0457 046 728, or Robert Mencil, phone number 0429 335 556.

General information regarding exploration licences and landholder's rights is available from: [www.dpi.nsw.gov.au/minerals](http://www.dpi.nsw.gov.au/minerals)



PN2306561

## Water is safe to drink during works

KEMPSEY Shire Council began a cleaning program of the drinking water distribution system in Crescent Head yesterday.

To minimise disruption, the council has engaged nationally-experienced contractors to complete the program in about 10 working days.

The cleaning program is deemed essential to ensure the drinking water system continues to operate efficiently with the changeover to chloramination.

Residents are advised that drinking water will be safe at all times throughout the cleaning process.

The work includes air scouring and swabbing of the distribution pipe network.

During the cleaning program customers may experience some discoloured water, the water is expected to appear cloudy throughout the duration of the program.

If you experience dirty water, run your tap until the water becomes clear.

If improvements are not seen after 10 minutes, contact the council.

All affected residents will be notified by council staff prior to the any outage.

Kempsey Shire Council has apologised for any disruptions to residents and visitors at Crescent Head.

website: [www.macleayargus.com.au](http://www.macleayargus.com.au)

SUPA LOCAL - SUPA LOCAL - SUPA LOCAL - SUPA LOCAL - SUPA LOCAL

## This Week's BEST BUYS

from your LOCAL SUPA IGA STORE

How the locals like it

White Grapes

\$6<sup>59</sup> kg

Choice Tomatoes

\$2<sup>99</sup> kg

Shop Locally & Save

Specials available from Tues 11/12/12 to Sun 16/12/12 or while stocks last

KEMPSEY SUPA IGA CENTRAL KEMPSEY

IGA LIQUOR

f MRCL

16-20 Clyde Street Kempsey Phone 6562 7544

SUPA LOCAL - SUPA LOCAL - SUPA LOCAL - SUPA LOCAL - SUPA LOCAL



# Connect with Local Business

Is your business missing? We can fix that! Call us on 6562 6622 to get your business in front of new potential customers.



## Accountants



Damn it! Due to COVID-19 I can't assist Cape York communities this year so I'm here in the Upper Macleay for the winter, available for tax advice & fast electronic refunds.

Chris Voase Registered Tax Agent  
Phone 0427937885  
neatams@inet.net.au  
www.neatams.com.au

Licence 41571015



## Electrical Services

### ELECTRICAL CONTRACTOR MARK WINKLER 0457 190 386

For all small domestic installations repairs & hotwater issues

**Servicing Macleay Valley region,**

Lic No. EC35896

## Engineers/Engineering



**Sable Engineering**  
A METALAND Authorised Dealer

### STEEL & ENGINEERING SUPPLIES

- Commercial & retail sales
- Design, fabrication & erection
- Fasteners
- Structural steel & fabrication
- Bearings
- Welder & compressor sales
- Welding consumables
- Mild steel, stainless & aluminium
- Lintels, reinforcing
- Colorbond fencing & roofing
- Trailer parts
- Safety equipment

23 YARRAWONGA ST., MACKSVILLE INDUSTRIAL ESTATE  
Phone: 6568 2014 Fax: 6568 2742  
Email: info@sable.net.au

## Floor Services

### DALE ROWLANDS TIMBER FLOORS

Lic No. 745 57C - ABN 42 788 974 650

New Floors installed - Sanding & polishing  
Repairs - Decks - Owner operator  
Satisfaction Guaranteed - 20+ yrs exp  
All areas - Free quotes

Dale Rowlands 0409 716 151  
Email: dalefloors@gmail.com

## Home Maintenance

### TOTAL HOME MAINTENANCE and CLEANING SERVICES

Home Cleaning • High pressure cleaning  
Painting • Roof restoration & repair • All odd jobs  
Pensioner discount - Fully Insured - 30yrs exp

Lic # 5647C

Ph 0423 830 090

## Roofing Services

### WOODGERS

#### METAL ROOFING SPECIALISTS

SUPPLY & INSTALLATION of all Metal Roofing Products  
✓ Roof ✓ Gutters & Down Pipes ✓ New and Re-roofs  
✓ Colorbond or Zincalume

Free Quote, Quality Workmanship

Jason Woodger 0408 654 599

Lic No: 240632C

TA5318668

## Septic Tank Cleaning

Serving the community for over 17 years

### Septic Tanks & Grease Traps

- 7 days - 24 hours
- Emergency service
- All areas



TONY GORDON 'Your local Bloke'

Ph: **6568 1752**

FAX: 6568 4440 MOB: 0428 653 952

# Connect with Classifieds



Phone: 02 6562 6622

Email: [classifieds.mnc@austcommunitymedia.com.au](mailto:classifieds.mnc@austcommunitymedia.com.au)



## Connect with Classifieds

### Place a Classifieds ad

- 6562 6622
- [classifieds.mnc@austcommunitymedia.com.au](mailto:classifieds.mnc@austcommunitymedia.com.au)
- Save time, submit online 24/7 [advertisers.com.au](http://advertisers.com.au)

Print and online packages available throughout Australia

Ongoing business advertising self service enquiries: [acmadonline@austcommunitymedia.com.au](mailto:acmadonline@austcommunitymedia.com.au)

Emoji now available 😊

## Produce

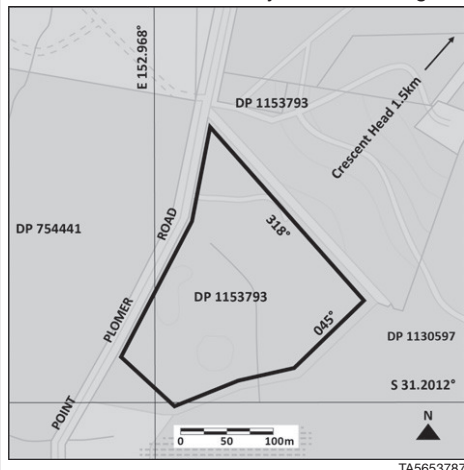
**FENCE POSTS SPLIT**  
Rounds and Stays  
Phone 0400 460 067

**ALL OUR  
CLASSIFIEDS  
APPEAR  
ONLINE**

## Mining Notices

### Mining Lease Application

Notice is given in accordance with Section 51A of the Mining Act 1992 and Clause 26 of the Mining Regulation 2016 that Mining Lease Application 588 for removal of a waste ilmenite stockpile and rehabilitation of the site has been lodged with the Department of Planning, Industry and Environment by Greencoast Environmental Rehabilitation, over an area of about six hectares which is located approximately 1.5 kilometres Southwest of the town of Crescent Head in the Parish of Palmerston, County of Macquarie as shown on the diagram below. Information regarding this application can be obtained from Mr Paul Smith, Pandanus Solutions, Phone Number 0408 766 186. Information regarding landholder's rights is available from the Department's website: [www.resourcesandenergy.nsw.gov.au/landholders-and-community/landholders-rights](http://www.resourcesandenergy.nsw.gov.au/landholders-and-community/landholders-rights).



## Public Notices

### ARTC

#### Railway Line Grinding Works 2020 - NSW North Coast and Sth QLD

The Australian Rail Track Corporation wish to advise that from July 6th to July 28th railway line grinding works will be conducted between Telarah NSW and Acacia Ridge South QLD with works occurring at any time including weekends and nights.

Rail grinding is conducted by automated modern on-track machinery and generally passes by unnoticed. There may also be equipment maintenance works in railway yards at any time as required including weekends and nights in railway yards located at Telarah, Paterson, Martins Creek, Dungog, Stroud Road, Craven, Gloucester, Mt George, Taree, Telegraph Point, Kendall, Kempsey, Eungai, Raleigh, Coramba, Grafton, Casino, Namoon, Kyogle, Tamrookum and Acacia Ridge.

All care will be taken to limit any noise & disturbances to the public during these times and though expected to be minimal, ARTC does apologise for any inconvenience that may be caused by the maintenance works which are essential to maintain the integrity and safe operation of the rail corridor. Any further enquiries can be directed to ARTC on 1300 550 402 during business hours or email [enviroline@artc.com.au](mailto:enviroline@artc.com.au).

## SAVE TIME, SUBMIT ONLINE

By placing your classified ad through our self-service portal,

**advertisers.com.au**

- Submit your ad at any time of the day
- Access the portal from anywhere in Australia
- Place an ad into newspaper, website and mobile with three easy steps

Connect with **Classifieds**



## Wanted to Buy

### HARDWOOD LOGS WANTED

A reputable North Coast Timber company wanting to buy stands of Hardwood Timber. Minimum 50 acres. Free appraisals. All mandatory approvals and insurances. Ph 6563 1188 or 0429 623 534 A/H

## Firewood

**FIREWOOD** 1 tonne \$110 1/2 tonne \$60  
Phone: 0447 624 790 or 6562 4790

## Motor Vehicles

**CHEAP CARS** From \$1,800 - \$6,000, 4WD's, autos, manuals. Lic No MD11087 Ph0427628245

## To Let & Wanted

## TO LET

3 B/R House LACHLAN ST..... \$300 P/W  
3 B/R + 2 sleepouts FORTH ST..... \$370 P/W

**RH Property PROFESSIONALS**  
[robbynhudsonproperty@bigpond.com](mailto:robbynhudsonproperty@bigpond.com)  
6562 6598 or 0458 626 598  
L/N 1059402

**ADD COLOUR  
TO YOUR AD**

Connect with  
**Classifieds**



## Positions Vacant

### Bowls Coordinator

Kempsey Heights Bowling Club is an award winning club located on the Mid North coast, with 2 synthetic greens, now seeking a Bowls Coordinator. This person will have a proven track record in a similar role organising club championships, annual tournaments, pennant and district events, social bowls and weekly events.

#### To be successful in this role you must:

- Manage the bowls office efficiently.
- Keep bowls members up to date on all events.
- Promote and organise annual tournament.
- Actively promote bowls in the region.
- Be prepared to coach new and existing bowls members.

#### The requirements for this role include:

- Computer literacy with word, excel and email.
- RSA/RCG certificate
- Working with children check
- First Aid certificate (desirable)

If you feel you are up to the challenge, passionate about Bowls and working in the hospitality industry, forward your application letter and resume along with references to

[secmgr@kempseyheights.com](mailto:secmgr@kempseyheights.com)

**No time to phone? SUBMIT YOUR CLASSIFIED ONLINE!**  
[www.advertisers.com.au](http://www.advertisers.com.au)

**PUT THE  
FEELS IN  
WITH  
EMOJI  
NOW  
AVAILABLE**





## Feed &amp; Grain

**Forage Sorghum Hay For Sale**  
Large Squares 8x4x3  
Garah/Moree  
North West NSW  
Competitive Pricing  
☎ 0428 657 014

**FREE, WHEATEN**  
Straw 8x4x3. Del by single or B/Dbale. Ballarat. Vic. ☎ 0427 346 422  
[www.agtrader.com.au](http://www.agtrader.com.au)

**Cereal straw 8x4x3**  
Barley..... \$99/T incl.  
Wheaten.. \$88/t incl.  
Baled Jan 20  
Geelong can deliver at fair rates  
☎ 0490 777 599

**HAY** Exc. quality, small squares of rye/clover, Lucerne, wheaten, from 13.20 p/bale. incl. Also wheaten rolls 5x4. Nth Vic. ☎ 0427 260 347.



**HAY** shedded, for sale, 8x4x3 bales, forage \$165/T, wheat \$385/T, Canola Silage \$165/B all incl. Freight avail. Location Gunnedah. Call ☎ 0428 435 232  
[www.agtrader.com.au](http://www.agtrader.com.au)

**HIMALAYAN SALT** block for livestock. Cost .80c/dse/yr. 84 minerals /ton. Ph ☎ 0447 148 276.  
[www.agtrader.com.au](http://www.agtrader.com.au)

**IRRIGATED LUCERNE** silage, 4x4 rounds \$143 incl. Bathurst. ☎ 0400 635 239.  
[www.agtrader.com.au](http://www.agtrader.com.au)

**JOHN DEERE 1937**, model A on steel wheels very good condition. \$18,000 incl. **Bulldog Model H & Bulldog Model O** \$12,000. each. ☎ 0429 130 847; ☎ 0427 865 270.  
[www.agtrader.com.au](http://www.agtrader.com.au)



**LUCERNE** 2nd grade, in round bales, \$250+gst = \$275. Please Call Andrew on ☎ 0408 142 082.  
[www.agtrader.com.au](http://www.agtrader.com.au)

**LUCERNE HAY** Grassy, 8x4x3, 17% Protein. D/Deck available from \$330/T incl. Finlay Hay Texas. ☎ 0428 535 130.

**LUCERNE HAY** small bales, 1st grade, grabe loaded, irrigated. Forbs. ☎ 0447 522 381.  
[www.agtrader.com.au](http://www.agtrader.com.au)



**LUCERNE HAY**, small bales, good quality & large bales 8x4x3. Also Feed oats suitable for stock only. Close to Forbes ☎ (02) 6852 2470 or ☎ 0427 809 833.  
[www.agtrader.com.au](http://www.agtrader.com.au)

## FOR SALE

**MILLET SILAGE**, 4x4 r/b, \$110.00 incl. GST. Bathurst/Windsor. ☎ 0417 247 865.  
[www.agtrader.com.au](http://www.agtrader.com.au)

**Molafos LIQUID FEED**  
**MOLAFOS & BULK** molasses for livestock feed supplementation & feedlotting. Call your distributor or phone 0429 365 171

## Feed &amp; Grain

**Barley Straw Cereal Hay**  
Transport Available  
☎ 0428 892 500

**OATEN HAY** 8x4x3 good weight & Quality \$220. incl. p/b. Forbes ☎ 0447 522 381.



**OATEN HAY** grown /shedded, Elmore/Vic, 8x4x3, feed test avail. P-10.10/me 9.70. Del Cowra, Temora, Forbes Wagga. Bdbl loads, 62 bales 2500/T avail. \$440 per/T. Incl. gst & freight. ☎ 0419 103 350.  
[www.agtrader.com.au](http://www.agtrader.com.au)



**OATEN, WHEATEN, & Straw** 8x4x3 bales. Phone for a delivery price. Call on ☎ 0428 566 251.  
[www.agtrader.com.au](http://www.agtrader.com.au)

## OBERON

Cattle fattening feed  
Pasture in dry sheets 120T  
Brewers Grain 120T  
Chocolate 160T  
Drums of Licorice 140 1.3T  
Plus GST  
Nebato Park Pick-up Ute or Tipper  
☎ Kevin 0497 462 265  
grahamcorbet@gmail.com



**PRIME QUALITY HAY** available big squares 8x4x3. Ex-cowra Oaten, Barley, Lucerne, and Vetch. Feed Test avail. ☎ 0447 423 420.  
[www.agtrader.com.au](http://www.agtrader.com.au)

**LUCERNE HAY** 2nd Grade 8x4x3 bales, Shedded, Cowra \$350/T incl. GST. Transport available ☎ 0428 413 140  
[www.agtrader.com.au](http://www.agtrader.com.au)

**WHEATEN HAY** 8x4x3 Bales, Shedded, Cowra \$330/T incl. GST. Transport Available ☎ 0428 413 140  
[www.agtrader.com.au](http://www.agtrader.com.au)

**STRAW** Sm Sq. Bedding Qual. all bales weighed \$8.80/bale incl. Cowra. Call on ☎ (02) 6342 3203  
[www.agtrader.com.au](http://www.agtrader.com.au)

**STRAW** Sm Sq. Bedding Qual. all bales weighed \$8.80/bale incl. Cowra. Call on ☎ (02) 6342 3203  
[www.agtrader.com.au](http://www.agtrader.com.au)

**VALLEY Hay Supplies** Hay for sale:

Lucerne, Rhodes Grass Oaten, Wheaten, SSS Sorghum avail in 4x4 rounds and small squares Delivery to all areas. Phone: Mick 0423 839 529 or Therese 0402 285 253  
[www.agtrader.com.au](http://www.agtrader.com.au)

## Feed &amp; Grain

**VETCH HAY** grown /shedded, Nhill, Victoria. 160T 8x4x3 feed test avail. \$330. p/t incl. Del. available. ☎ 0427 776 443.

**WHEATEN & Barley** straw, clean & wind-rowed, 8x4x3, \$100 per ton. Central Vic. ☎ 0428 481 105.  
[www.agtrader.com.au](http://www.agtrader.com.au)



**WHEATEN** Hay 8x3x3 good colour, shedded. \$110/B incl. Wagga Area. ☎ 0428 285 243  
[www.agtrader.com.au](http://www.agtrader.com.au)



**WHEATEN** hay 8x4x3 at cowra, \$275/T incl. Good quality. ☎ 0418 251 235.  
[www.agtrader.com.au](http://www.agtrader.com.au)



**WHEAT STRAW** 8x3x4, high density, \$55/bale incl. GST. Ex Griffith NSW. ☎ 0457 000 019.  
[www.agtrader.com.au](http://www.agtrader.com.au)

## Fencing and Gates

**FENCE WOOD BORER** Farmforce Post Drivers. Heavy duty. 3 year warr. ☎ (07) 5442 1915 or 0408 883 652 7am-8pm  
[www.farmforce.com.au](http://www.farmforce.com.au)

## Fertiliser

**CHICKEN MANURE** Lime, dolomite & gypsum, delivery to Sydney & surrounding areas & Central West. ☎ 0427 455 695.  
[www.agtrader.com.au](http://www.agtrader.com.au)

**GYPSUM** A Grade bulk, natural & recycled, Del. ☎ 0499 980 122 premiu msoilconditioners.com.au

**LIQUID FERTILISER** for crops, grazing, lawn & turf. Introductory offer, Better than 50% discount. Boost your yield and production. Phone ☎ 0428 978 319.  
[www.agtrader.com.au](http://www.agtrader.com.au)

**SOFT ROCK** Phosphate, bulk loads del. ☎ 0499 980 122. premiu msoilconditioners.com.au

## GYPSUM

- ★ Finest Screened Gypsum
- ★ Consistent High Quality
- ★ Mitchell Hwy Bourke

**WARREGO GYPSUM**  
(02) 6874 7621

**ALL OUR CLASSIFIEDS APPEAR ONLINE**

**SAVE TIME, SUBMIT ONLINE**  
Place your classified ad anytime 24/7



[advertisers.com.au](http://advertisers.com.au)

## Fertiliser

## BIO-BOOST

This tried proven economical fertiliser is multi purpose and can be used as soil or foliar applications. They fulfill all nutrient requirements for your Soil and Crops. Bio Boost is a complete liquid fertiliser that is cost effective from \$25.00 p/hectare Free Freight to most areas.  
☎ 1800 809 229

## Firewood

**BULK FIREWOOD** Quality split & clean or block firewood available now. 35T loads, 300T in stock. Be Quick. Delivery NSW. Please call ☎ 0473 650 079  
[www.agtrader.com.au](http://www.agtrader.com.au)

## For Sale

**COOLSTAR** Coolrooms /Freezer rooms. Your design or our special kits. Mobile rooms. Farmers rooms. Unique door. 1800 816 672.  
[coolstar.com.au](http://coolstar.com.au)  
[www.agtrader.com.au](http://www.agtrader.com.au)



**RAIL LINE** 60lb, approx 9m, \$180 per length 80lb, approx 10 - 12m, \$18 per mtr 100lb, approx 12m, \$17 per mtr. Transport can be organised. Located Tamworth. ☎ Stuart 0418 274 662.  
[www.agtrader.com.au](http://www.agtrader.com.au)

## COOLROOMS FREEZER ROOMS

All sizes  
All locations  
H&M Refrigeration  
Ph. (02) 6742 2007

## NKF GROUP INDUSTRIAL SECONDHAND TRADERS

**DRILL PIPE**  
3m & 2.35m Avail  
9.5m 73x5.5mm  
9.5m 89x7mm  
Please call for current pricing  
**STEEL PIPE**  
6.5m 165x2.7mm.....\$76  
18m 273x8mm.....\$1244  
18m 406x6.4mm.....\$993  
12m 106x14.....\$5673  
12m 1200x16.....\$7020



HDPE pipe, Buildings, Containers, Concrete, Tanks & more avail. on-line  
07 4630 4784  
[www.nkf.net.au](http://www.nkf.net.au)  
Toowoomba, QLD  
Freight available  
[www.agtrader.com.au](http://www.agtrader.com.au)

**General Goods**  
**VINYL RECORDS WANTED TO BUY**  
Cash paid for unwanted vinyl. Based in ACT but will travel far and wide to look at bigger collections. Call Charlie 0400470858

## Grain Handling

**FIBREGLASS SILOS** From 2.5 ton to 24 ton. Price on application. Phone (02) 4653 1293.  
[www.agtrader.com.au](http://www.agtrader.com.au)

## Connect with Classifieds



## Landscaping &amp; Gardening

## PIPELINE SECONDS

Concrete Factory Seconds

**Clearance Sale !**

**DISCOUNTS** from medium to large Diameter pipes. Pipes & Culverts

☎ (02) 4369 4881 ☎ 0413 454 939

Pick up yard Shanes Park

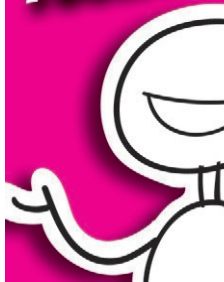
## Livestock



- HOT DIP GALVANISED
- RUBBER FLOOR
- READY FOR SCALES

Call 1800 650 682  
[WWW.TEPARI.COM](http://WWW.TEPARI.COM)

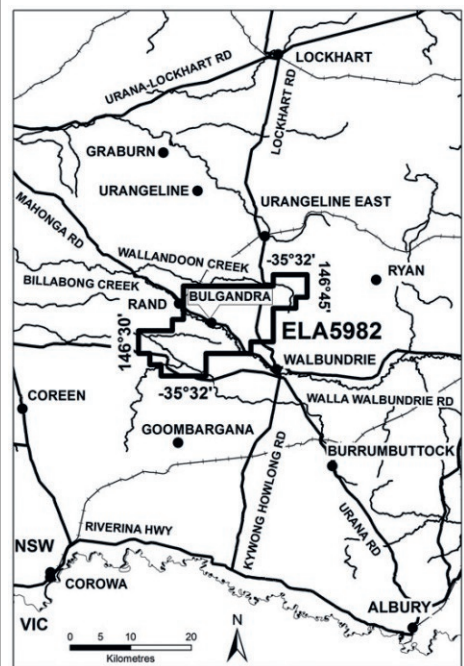
**PROMOTE YOUR BRAND**  
**ADD A LOGO TO YOUR AD**



## Mining Notices

## EXPLORATION LICENCE APPLICATION

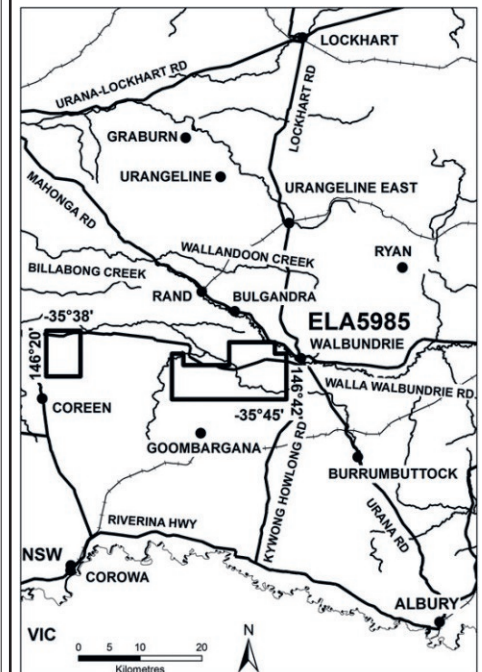
Notice is given in accordance with **Section 13A of the Mining Act 1992 and Clause 15 of the Mining Regulation 2016** that Exploration Licence Application 5982 for Group 1 (Metallic minerals) has been lodged with the Department of Planning, Industry and Environment by **Krakatoa Australia Pty Ltd (ACN 636 907 027)** over an area of 72 units (about 201 square kilometres) of which the northern boundary is located approximately **60 kilometres northwest of Albury** as shown on the diagram below. Information regarding this application can be obtained from **Dean Brownlee - Rangott Mineral Exploration Pty Ltd**, Phone Number (02) 6362 5115 or email [dean@rangottmineral.com.au](mailto:dean@rangottmineral.com.au). Information regarding landholder's rights is available from the department's website: <https://www.resourcesandenergy.nsw.gov.au/landholders-and-community/landholders-rights>



## Mining Notices

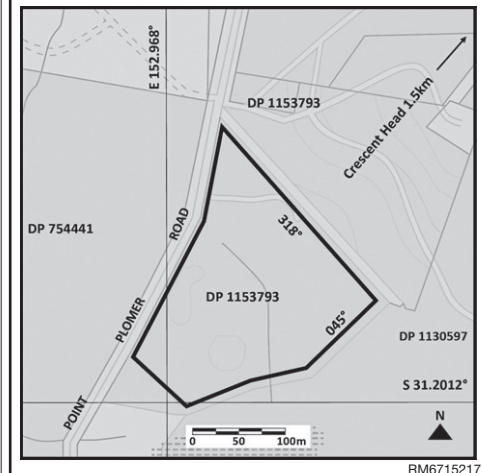
## Exploration Licence Application

Notice is given in accordance with Section 13A of the Mining Act 1992 and Clause 15 of the Mining Regulation 2016 that Exploration Licence Application 5985 for Group 1 (Metallic minerals) has been lodged with the Department of Planning, Industry and Environment by **Krakatoa Australia Pty Ltd (ACN 636 907 027)** over an area of 52 units (about 145 square kilometres) of which the northern boundary is located approximately **50 kilometres northwest of Albury** as shown on the diagram below. Information regarding this application can be obtained from **Dean Brownlee - Rangott Mineral Exploration Pty Ltd**, Phone Number (02) 6362 5115 or email [dean@rangottmineral.com.au](mailto:dean@rangottmineral.com.au). Information regarding landholder's rights is available from the department's website: <https://www.resourcesandgeoscience.nsw.gov.au/landholders-and-community/landholders-rights>



## Mining Lease Application

Notice is given in accordance with Section 51A of the Mining Act 1992 and Clause 26 of the Mining Regulation 2016 that Mining Lease Application 588 for removal of a waste ilmenite stockpile and rehabilitation of the site has been lodged with the Department of Planning, Industry and Environment by Greencoast Environmental Rehabilitation, over an area of about six hectares which is located approximately 1.5 kilometres Southwest of the town of Crescent Head in the Parish of Palmerston, County of Macquarie as shown on the diagram below. Information regarding this application can be obtained from Mr Paul Smith, Pandanus Solutions, Phone Number 0408 766 186. Information regarding landholder's rights is available from the Department's website: [www.resourcesandenergy.nsw.gov.au/landholders-and-community/landholders-rights](http://www.resourcesandenergy.nsw.gov.au/landholders-and-community/landholders-rights).



**AgTrader**  
.com.au

**Your online marketplace for all things Ag**



Whether buying or selling, you are connected to a wide range of farmers, dealers, products and brands

**THE LAND**

[AgTrader.com.au](http://AgTrader.com.au)





JANUARY 4 2013 - 12:00AM

## A green view: A time developers love

John Jeayes



THE holiday season from mid-December to late January is traditionally a relaxed family time with a few parties mixed in over the Christmas-New Year break.

It is a time when we look forward to catching up with families and friends, and perhaps going away camping or just kicking back and washing away some of the worries of a busy life.

It is a time for watching the cricket or the Sydney to Hobart yacht race.

A time for helping the grandkids learn to ride a bike or catch a wave.

It is a time for walking the beautiful beaches of the Macleay, exploring a forest track or paddling a canoe, a time for throwing a line to maybe catch a fish.

It is a time of year everyone loves.

It is a time loved too by the developers.

It is a time when the smarties lodge their Development Applications (DAs) and when government bodies slip through their planning changes when they know you will be off guard and not up for reading 100 or more pages of technical jargon.

Typically this holiday time eats up your opportunity to review their plans if you even know they are advertised.

The NSW government knows this only too well.

It has required councils to complete their Local Environment Plans (LEPs) by February, so you are supposed to be considering the future land development in your locality right now.

You may find some surprises in your Kempsey LEP.

There are many, many changes in red ink in the 106 page information booklet provided by council.

In RU1 (Rural) areas council has added forestry as permitted without consent, which will bring rejoicing in some areas, but I would hope the Native Vegetation Act in whatever form it survives a government review will have something to say about that.

Agriculture remains of course, but farmers may find cellar-door premises, cemeteries, eco-tourist industries, correctional centres and extractive industries, helipads and open cut mining adjoin their properties.

RU5 Village zones may be livened up with 'Home occupation (sex services)' with council consent.

It really is worth having a look at what may be coming your way.

Even with the present LEP there are interpretations of zoning rules which might surprise, as has a holiday season DA at Dulconghi Heights near Crescent Head.

There is a proposal for a dwelling and three cabins there in what was thought to be a large block, single-dwelling rural residential area.

Another holiday surprise is the China Australia Mining exploration licence application for the mining of mineral sands 1.5km south of Crescent Head.

The diagram shows two blocks taking in north of Crescent Head and a distance down Back Beach.

However, their representatives assure me the company is not interested in going over previously mined areas, but wants to look at the piles of ilmenite and monazite which were left by Mineral Deposits Ltd in large mounds on site.

Many Crescent Head residents I spoke with feel that DA is not a problem if that is all the DA is about.

Of greater concern is a DA concept floating through at South West Rocks.

The DA is for an area real estate people refer to as Settlers Ridge.

These blocks were clearly never settled as the area contains high conservation value forest, and at least three threatened species struggling to maintain populations against ever expanding residential development.

The Settlers Ridge Residential Subdivision and Biobanking Proposal purports to not compromise environmental values, yet it intends to remove most of the high conservation value forest on the site.

Even though the project concept claims use of the BioBanking scheme will maintain or improve the ecological value of the site, the key habitat of the threatened species there will be fractured as the "red-flag" threatened species protection area to be left will be surrounded by houses, making corridor linkage impossible.

The adjoining offset proposed is secondary habitat and will take decades to approach the old growth forest values they intend to desecrate, while the site of compensatory habitat for the brush-tailed phascogale in the local area has not been identified.

The relatively small red flag island does not allow for the phascogale's recorded needs.

The female brush-tailed phascogale will normally use up to 20ha searching for food, while a male may range over 100ha searching for female company.

Females live typically for three years while the male usually lives less than a year, dying soon after mating.

One exhausted phascogale crawled out of the proposed adjoining residential area into Cr Jim Gribbin's backyard in Beech St and died there in 2009. It seems all that phascogale's efforts may have been in vain.

Your submission on the Settlers Ridge proposal for 154 residential lots is due on February 4.

A website has been created -

[settlers-ridge.com.au](http://settlers-ridge.com.au)

- and the developers will host an open day public exhibition at the site at the western end of Steve Eagleton Dve from 10am to 2pm on Saturday, January 19.



Native species will be threatened by the new development at SWR according to Mr Jeayes.