

Unexpected Finds Protocol

Aboriginal and non-Aboriginal Heritage

1 Background

An Aboriginal Cultural Heritage Assessment was undertaken by Kelleher Nightingale Consulting (KNC) on 25 November 2021 (Appendix 25 of the EIS – Willowtree, December 2021) to address Condition 18 (Aboriginal Cultural Heritage) of the Planning Secretary’s Environmental Assessment Requirements (SEARs) for the Development. The assessment concluded that no Aboriginal objects, archaeological sites or areas of Aboriginal archaeological potential were identified within the boundaries of the Project site during the assessment.

An Aboriginal Heritage Impact Permit (AHIP) was issued for the Stage 2 Basin area in 2018 and remains valid until 2028. This existing AHIP (AHIP number C0003358) allows for impact to identified Aboriginal heritage and Aboriginal objects within the AHIP area. Charter Hall Holdings has confirmed with the AHIP holder that the Development may use the existing AHIP.

An Unexpected Finds Protocol for Aboriginal and Non-Aboriginal heritage is to be included in CEMP.

2 Unexpected Finds Protocol

This protocol has been developed to provide a consistent method for Qanstruct to manage unexpected Aboriginal and non-Aboriginal heritage items that may be discovered during construction of the Project.

This protocol applies to all construction activities associated with the Project.

Should an unexpected Aboriginal or non-Aboriginal heritage item, or skeletal remains be discovered, the protocol on Figure 1 should be followed.

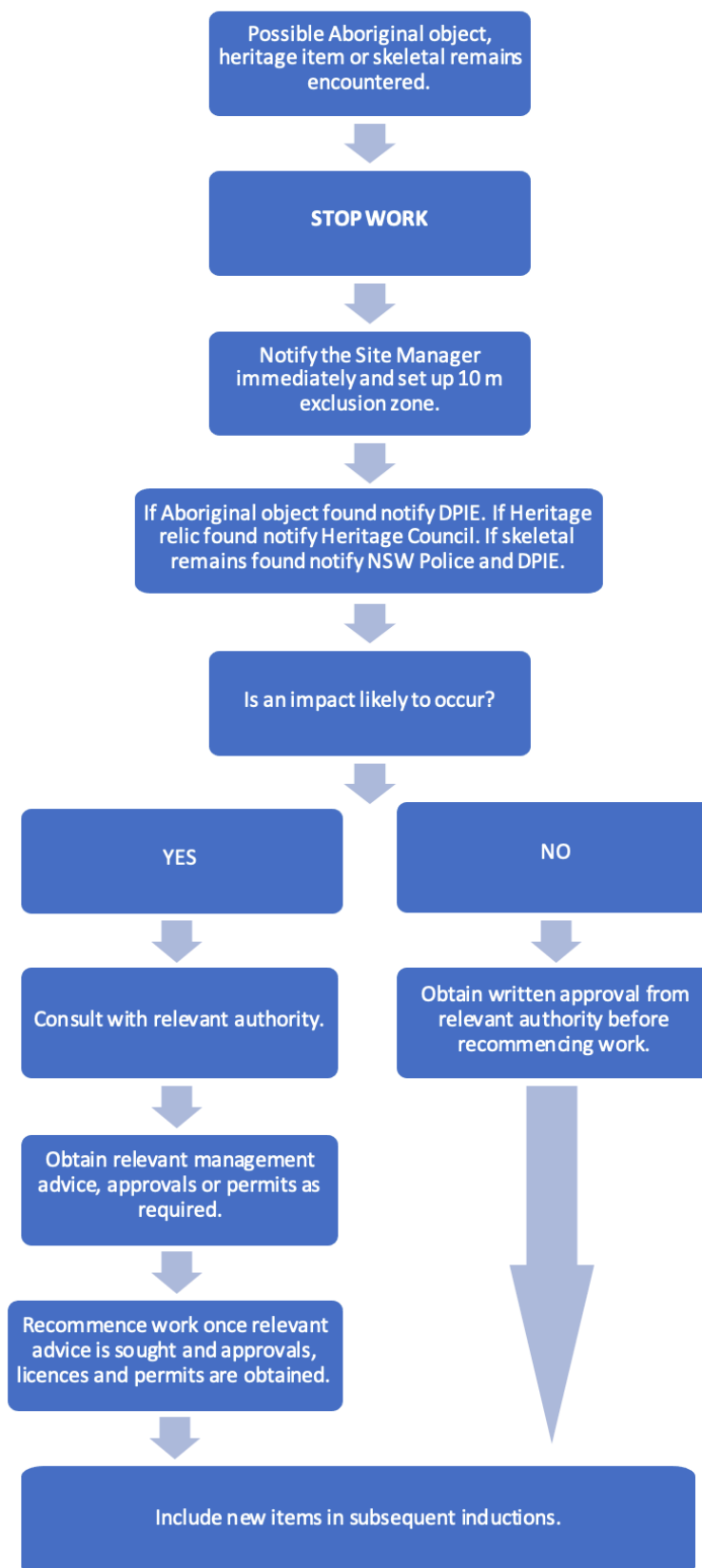


Figure 1 Unexpected Finds Protocol for Aboriginal and non-Aboriginal heritage