

Unexpected Finds Protocol Contamination

1 Background

A Preliminary Site Investigation was undertaken by JBS&G Australia Pty Ltd (JBS&G) on 30 November 2021 (Appendix 23 of the Draft EIS – Willowtree, December 2021) to address Condition 16 (Contamination and Remediation) of the Planning Secretary's Environmental Assessment Requirements (SEARs) for the Development.

The Preliminary Site Investigation concluded that no further contamination assessment is necessary under SEPP 55. However, an Unexpected Finds Protocol for contamination should be included in the CEMP.

2 Unexpected Finds Protocol

It is acknowledged that previous investigations of the site have been undertaken to assess the identified contaminants of potential concern in selected parts of the site. However, ground conditions between previous sampling points may vary, and further hazards may arise from unexpected sources and/or in unexpected locations during site works.

As a precautionary measure to ensure the protection of the workforce and surrounding community, should asbestos be identified (or any other unexpected potentially hazardous substance), the protocol on Figure 1 should be followed.

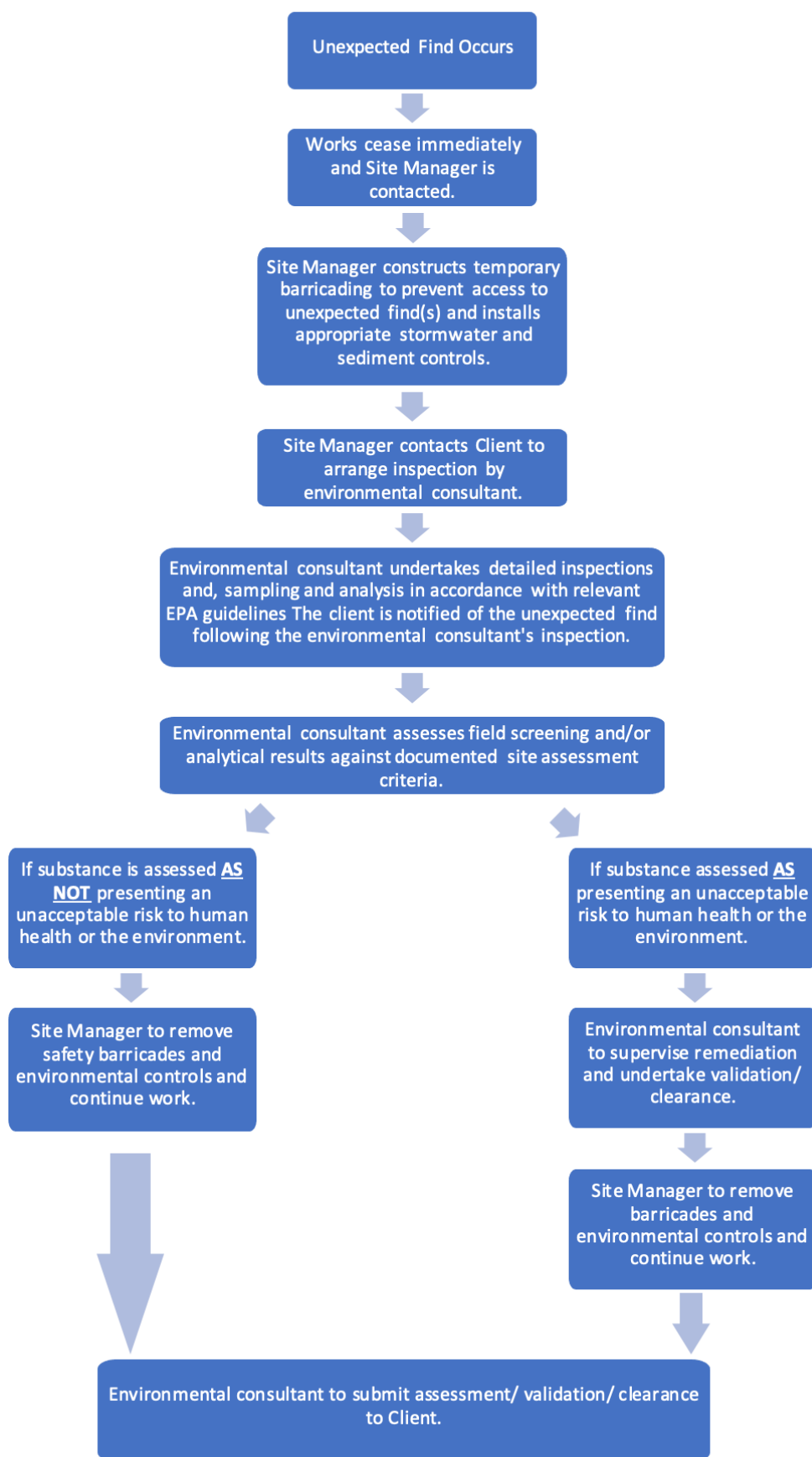


Figure 1 Unexpected Finds Protocol for Contamination