

DEVELOPMENT APPROVAL DRAWINGS LOT 1, EASTERN CREEK DRIVE, EASTERN CREEK NSW.



ARTIST IMPRESSION

SHEET LIST - DEVELOPMENT APPROVAL DRAWINGS	
SHEET #	SHEET NAME
TP-01	TITLE SHEET
TP-02	LOCALITY PLAN
TP-03	SITE PLAN
TP-03.1	SIGNAGE PLAN
TP-04	ROOF PLAN
TP-05	OFFICE PLANS SHT 1
TP-06	OFFICE PLANS SHT 2
TP-07	SECTIONS/ELEVATIONS
TP-08	ELEVATIONS
TP-09	ELEVATIONS
TP-10	OFFICE DETAIL ELEVATIONS

PROJECT NERIO
LOT 1, EASTERN CREEK DRIVE, EASTERN CREEK NSW.



SHEET NAME: TITLE SHEET	
JOB NO. 4387-21	SCALE: @B1 SIZED SHEET PROJECT NORTH
Drawing No: TP-01	ISSUE DATE: 3/02/2022
REVISION: B	DRAWN BY: FF

THIS WORK IS CONFIDENTIAL AND THE SUBJECT OF COPYRIGHT OWNED BY QANSTRUCT (AUST) PTY LTD. AND MADE IN AUSTRALIA IN 2008. SUBJECT TO THE COPYRIGHT ACT 1968 (CN) IT MAY NOT BE REPRODUCED, PUBLISHED, COMMUNICATED TO THE PUBLIC OR DISCLOSED TO ANY THIRD PARTY WITHOUT THE PRIOR WRITTEN CONSENT OF QANSTRUCT (AUST) PTY LTD. ANY IMPLIED LICENSE IS EXPRESSLY NEGATED. THIS NOTICE PREVAILS OVER ANY OTHER DOCUMENTATION UNLESS SUCH DOCUMENTATION HAS BEEN SIGNED ON BEHALF OF QANSTRUCT (AUST) PTY LTD.

Qanstruct Pty Ltd 500 Burwood Road, Telephone (03) 9810 8300
 ACN 070 953 874 Hawthorn, Victoria, Web: www.qanstruct.com.au
 ABN 88 765 907 859 Australia 3122





1 LOCALITY PLAN-TRUE NORTH
1:1000

PROJECT NERIO
LOT 1, EASTERN CREEK DRIVE, EASTERN CREEK NSW.



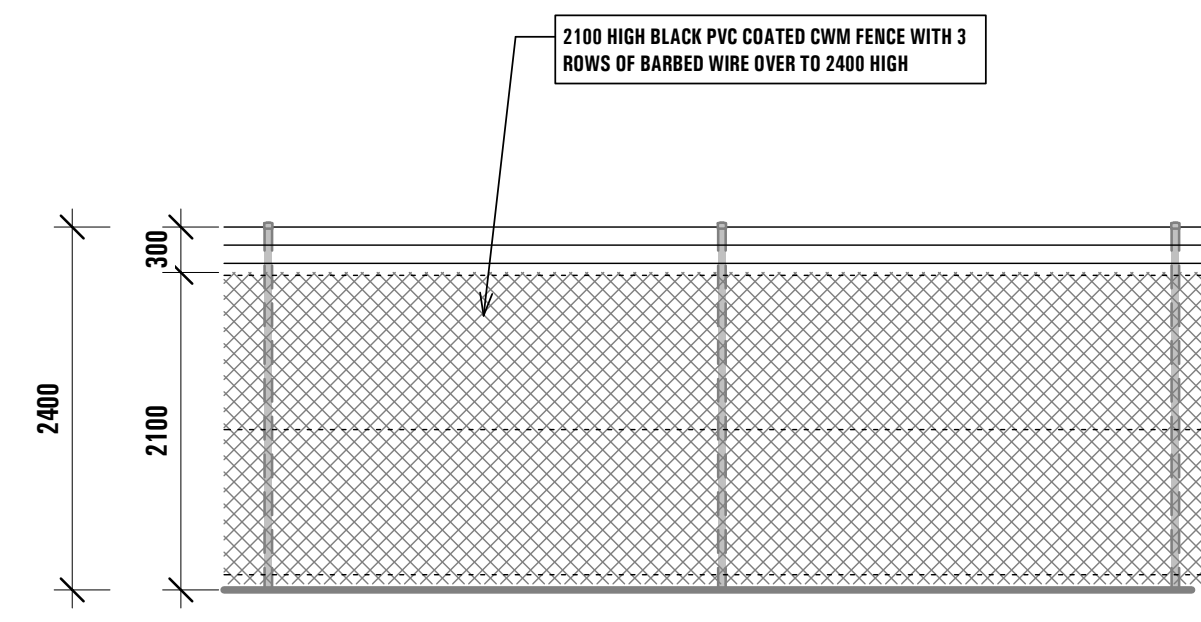
SHEET NAME: LOCALITY PLAN	
JOB NO. 4387-21	SCALE: 1:1000 @B1 SIZED SHEET TRUE NORTH
Drawing No: TP-02	ISSUE DATE: 3/02/2022
REVISION: B	DRAWN BY: FF

THIS WORK IS CONFIDENTIAL AND THE SUBJECT OF COPYRIGHT OWNED BY QANSTRUCT (AUST) PTY LTD. AND MADE IN AUSTRALIA IN 2008. SUBJECT TO THE COPYRIGHT ACT 1968 (CN) IT MAY NOT BE REPRODUCED, PUBLISHED, COMMUNICATED TO THE PUBLIC OR DISCLOSED TO ANY THIRD PARTY WITHOUT THE PRIOR WRITTEN CONSENT OF QANSTRUCT (AUST) PTY LTD. ANY IMPLIED LICENSE IS EXPRESSLY NEGATED. THIS NOTICE PREVAILS OVER ANY OTHER DOCUMENTATION UNLESS SUCH DOCUMENTATION HAS BEEN SIGNED ON BEHALF OF QANSTRUCT (AUST) PTY LTD.

Qanstruct Pty Ltd
ACN 070 953 874
ABN 88 765 907 859

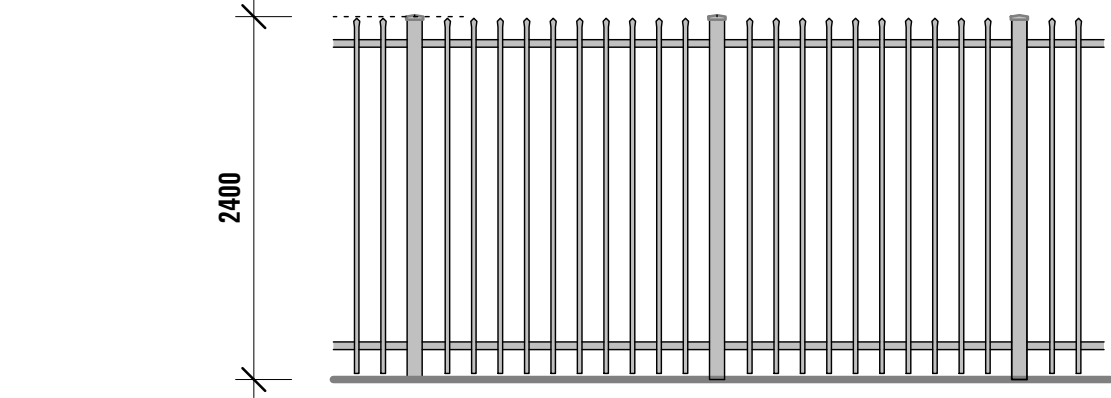
500 Burwood Road,
Hawthorn, Victoria,
Australia 3122
Telephone (03) 9810 8300
Web: www.qanstruct.com.au





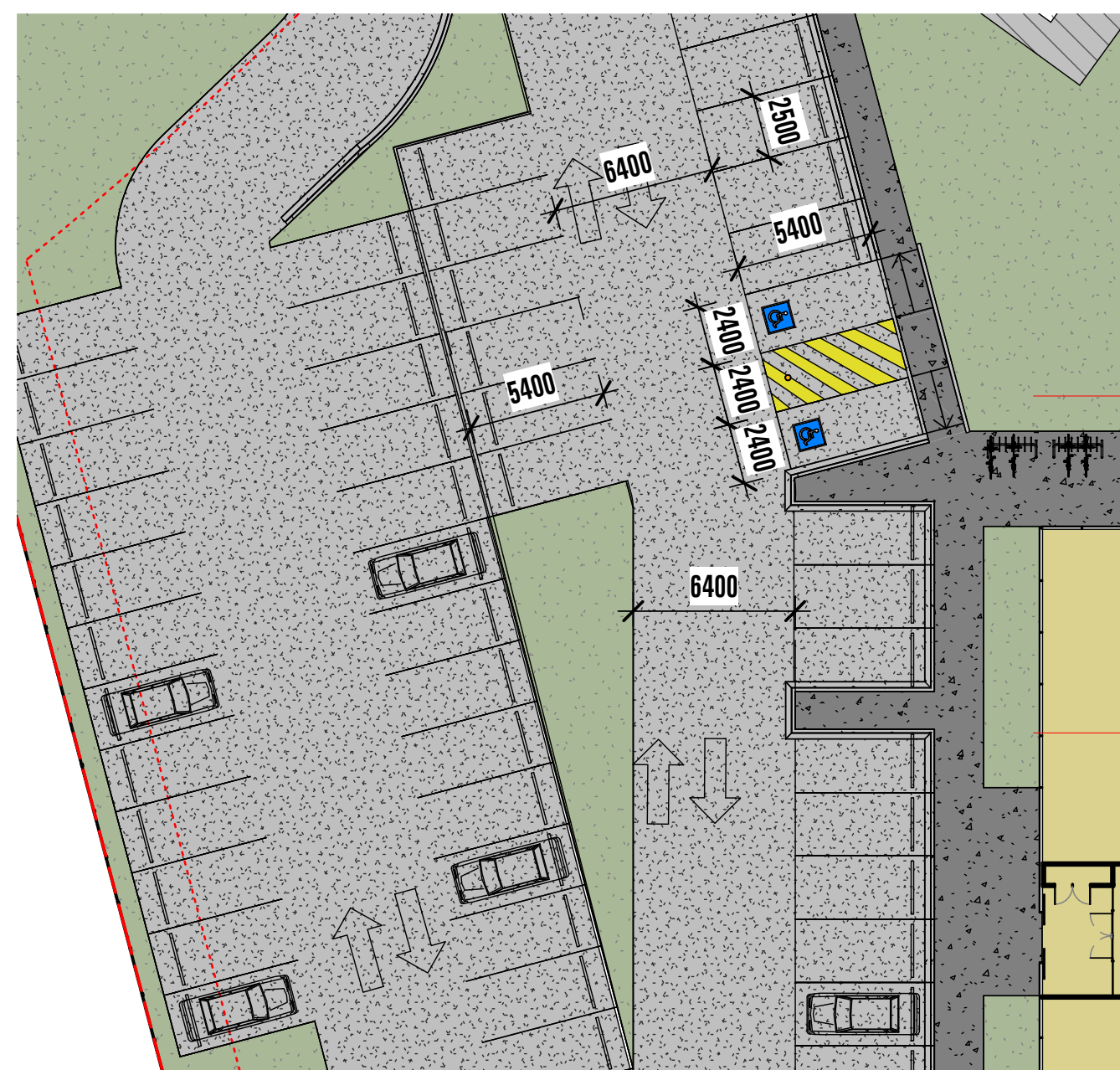
FENCING - 01 (CWM)

1 : 50



FENCING - 02 (PALISADE)

1 : 50

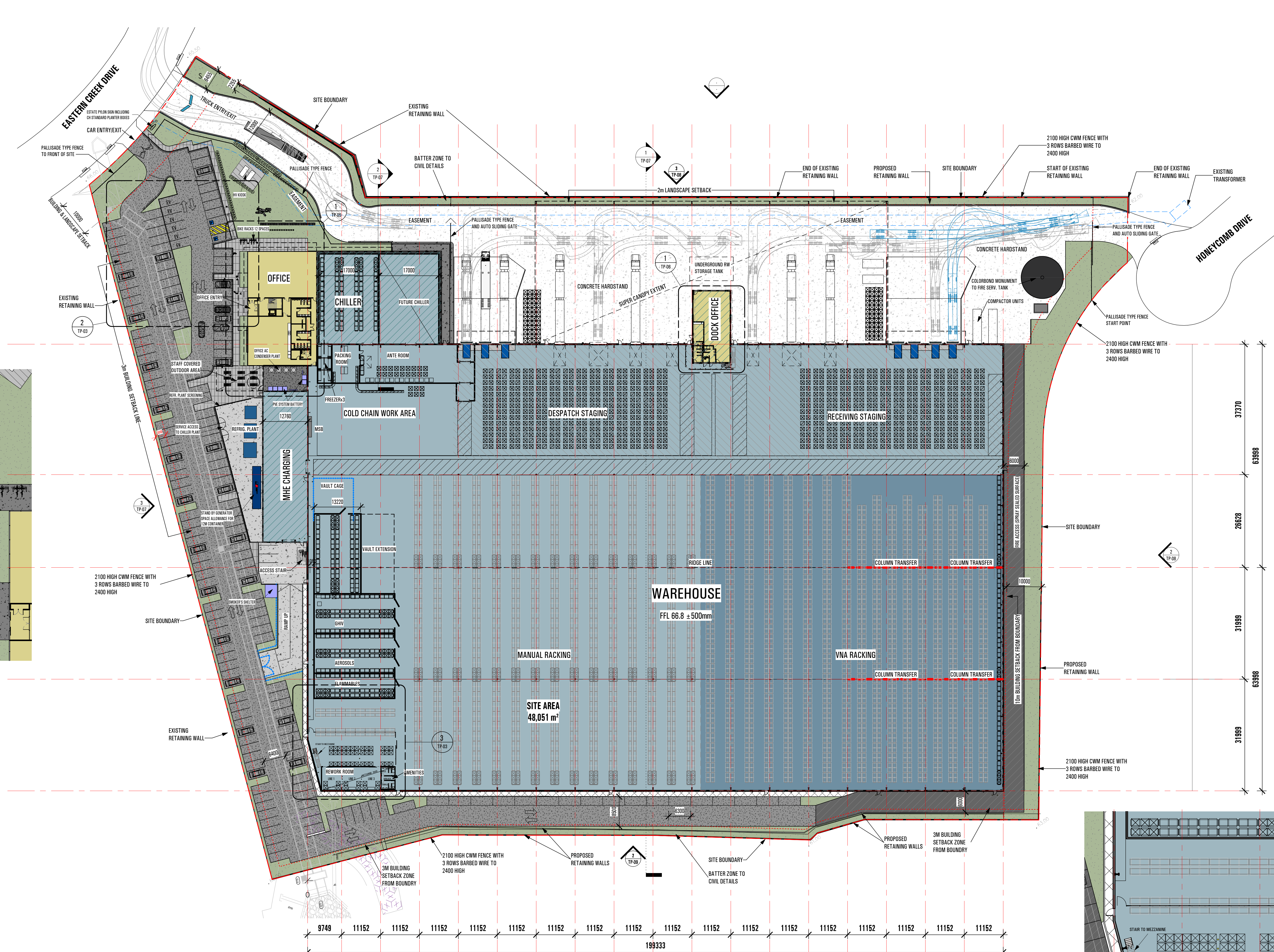


CAR PARK DETAIL

1 : 250

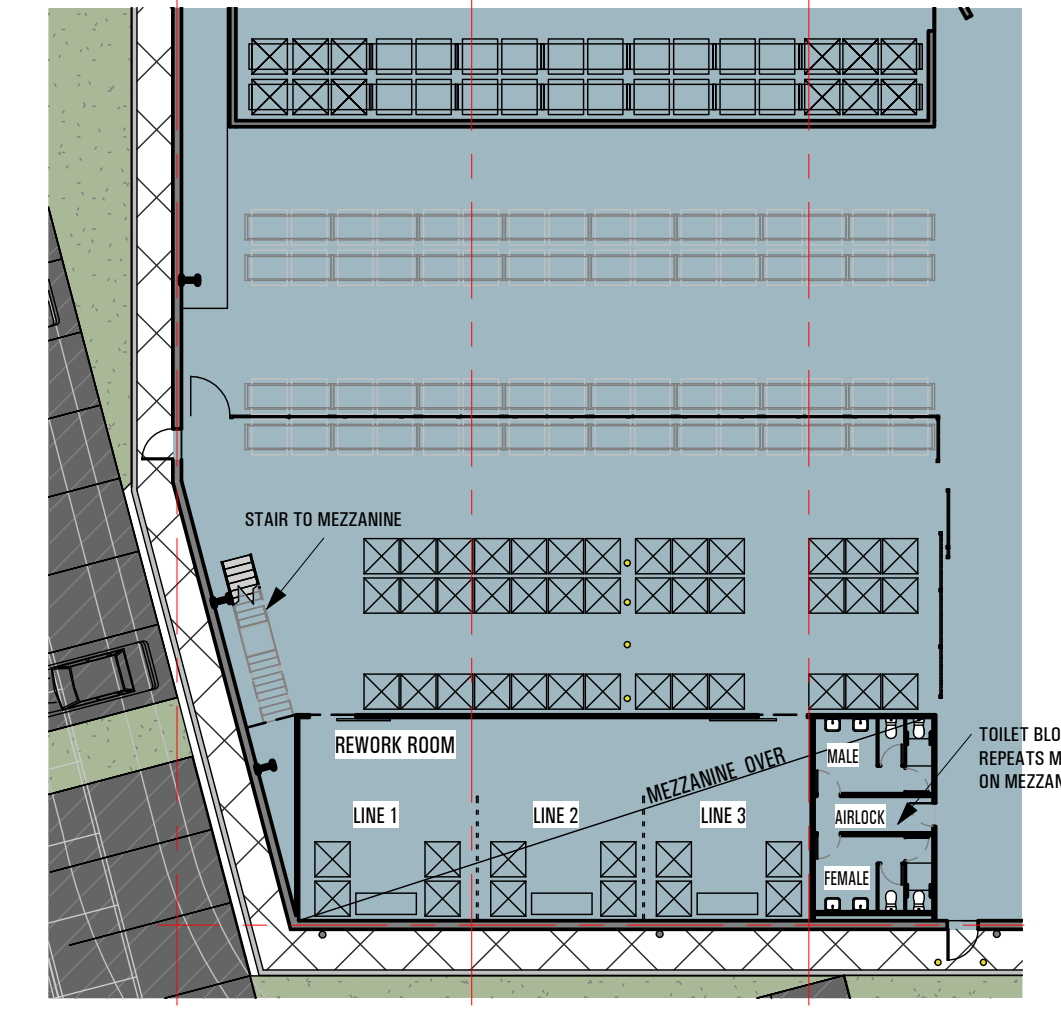
DEVELOPMENT SUMMARY

TOTAL SITE AREA (APPROX)	48,053 M²
WAREHOUSE AREA (GFA)	20,280 M²
FORKLIFT CHARGING	500 M²
FREEZER	920 M²
MEZZANINE OVER RE-WORK AREA	150 M²
TOTAL WAREHOUSE (GFA)	21,850 M²
WAREHOUSE STAGING AREAS (HATCHED) - EXCLUDED FROM GFA.	5,120 M²
2 STOREY DOCK OFFICE	450 M²
2 STOREY MAIN OFFICE	1,300 M²
TOTAL OFFICE AREA	1,750 M²
TOTAL BUILDING AREA	28,720 M²
TOTAL SITE EFFICIENCY	59.8%
CAR PARKING CALCULATION	
CAR PARKING SPACES	184 NO.
LANDSCAPE CALCULATION	
ACTUAL PROVIDED LANDSCAPED AREA	2,915M²
6% OF TOTAL SITE AREA	



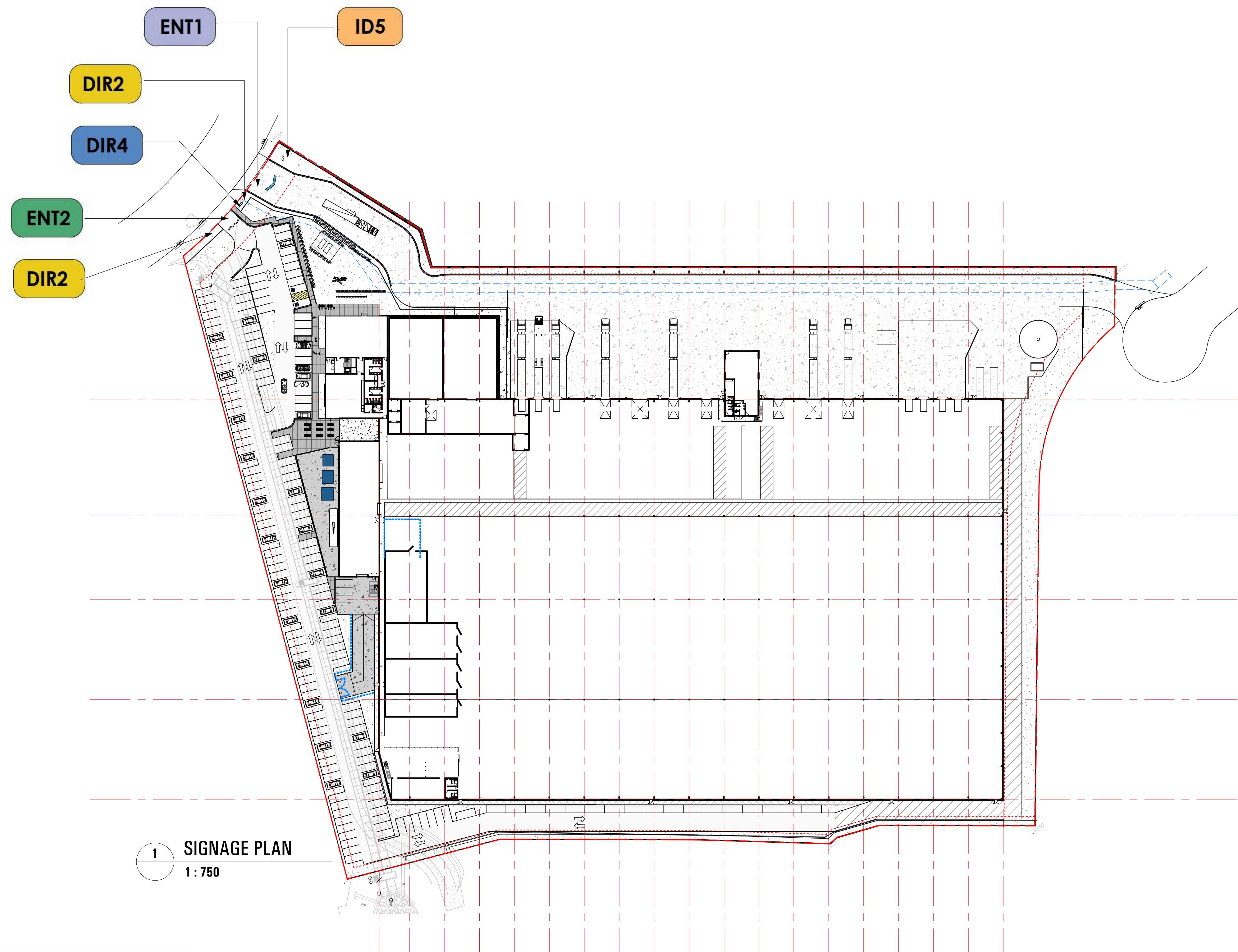
1 SITE PLAN

1 : 500

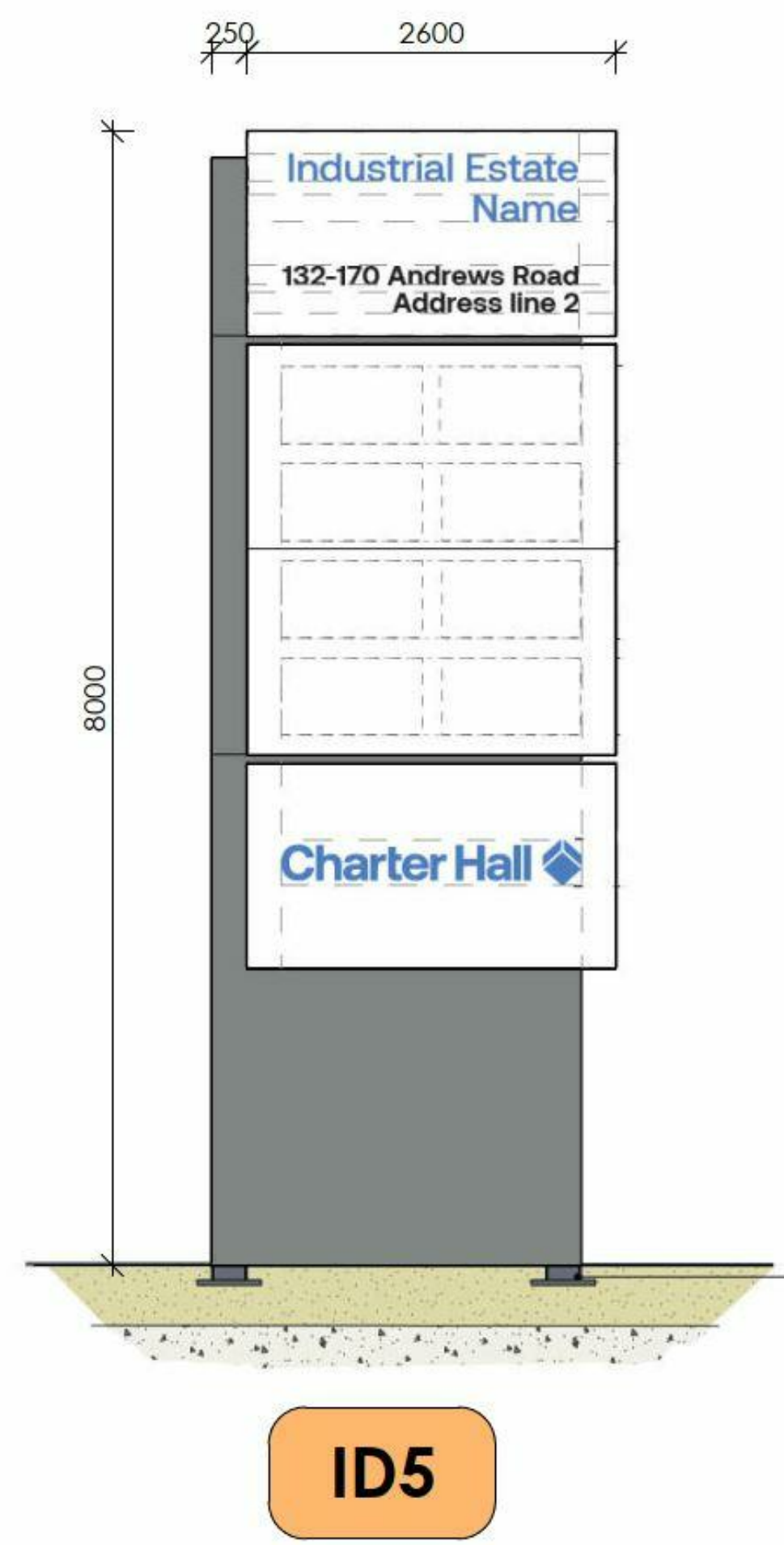


3 REWORK AREA DETAIL

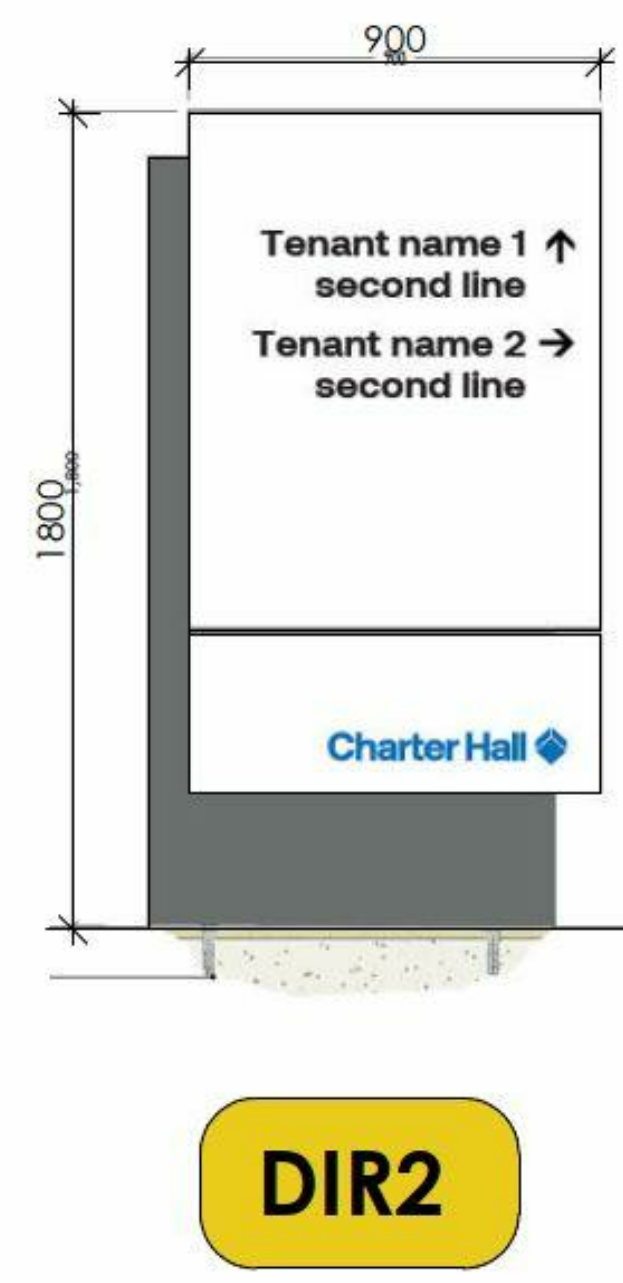
1 : 250



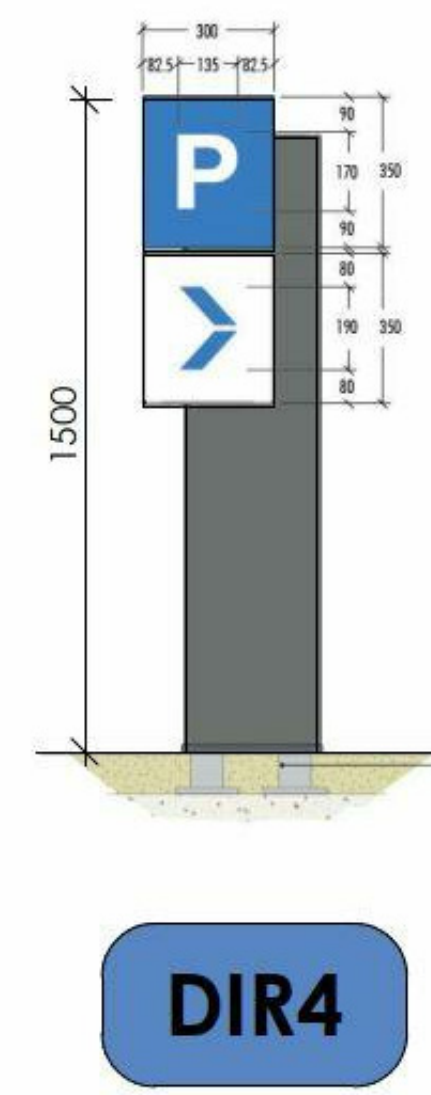
1 SIGNAGE PLAN
1:750



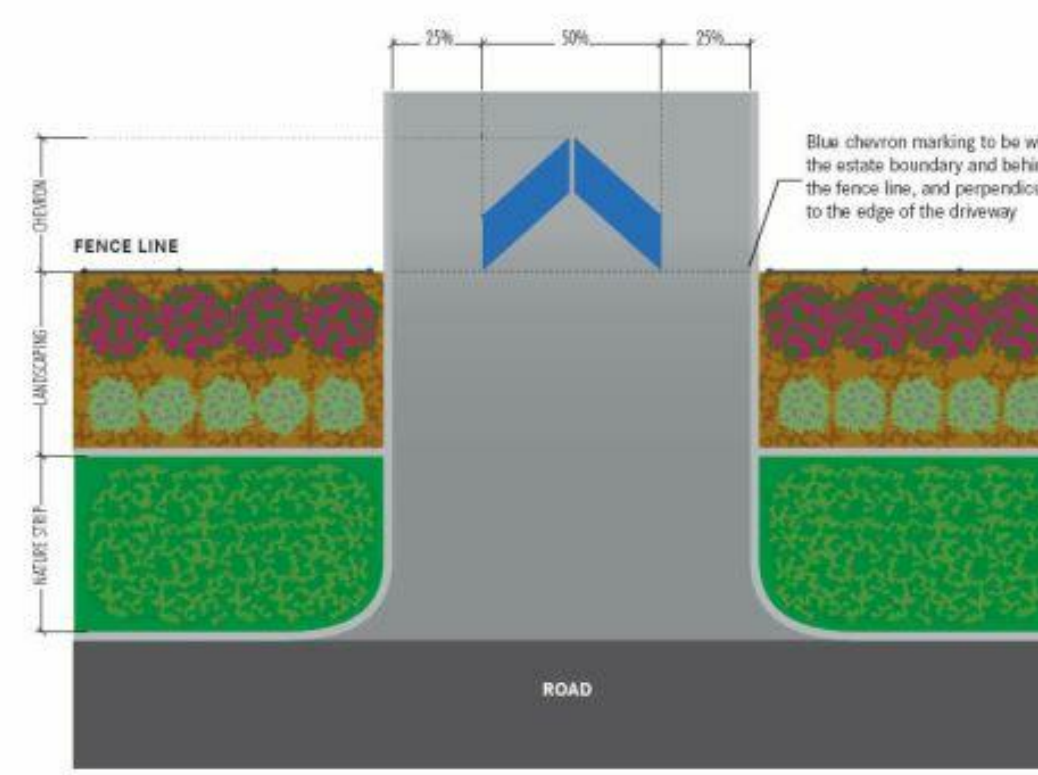
ID5



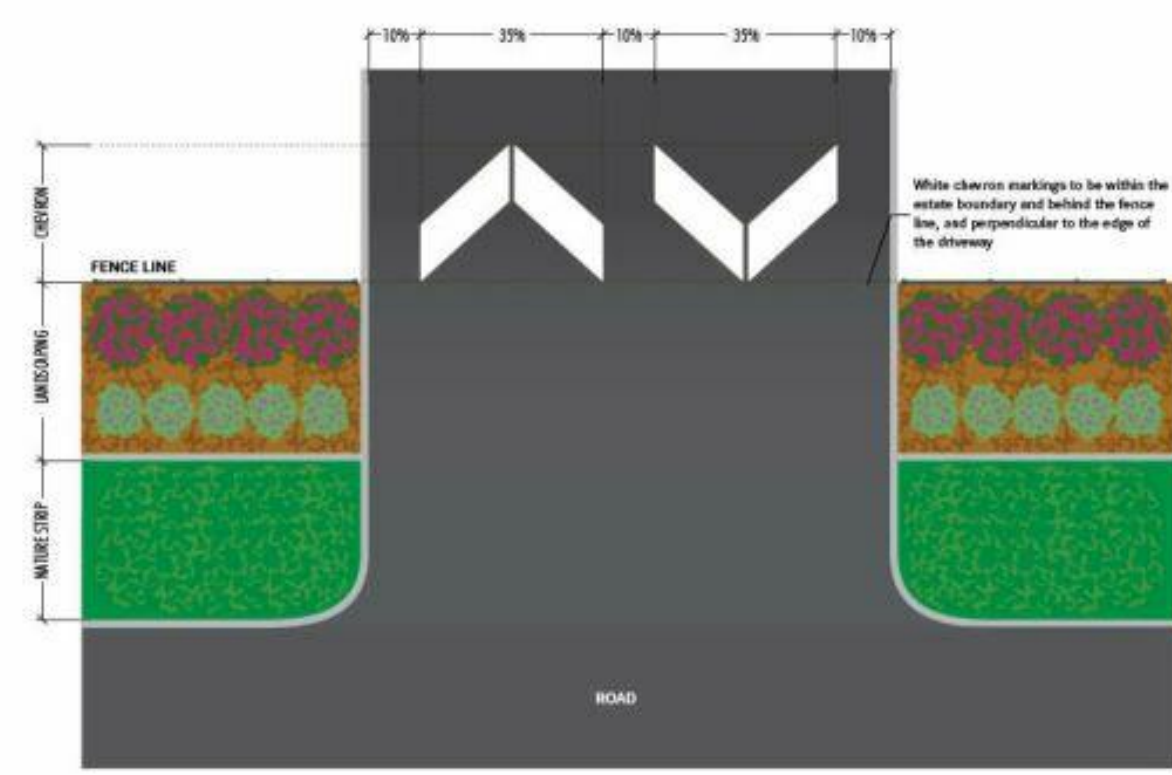
DIR2



DIR4



ENT1

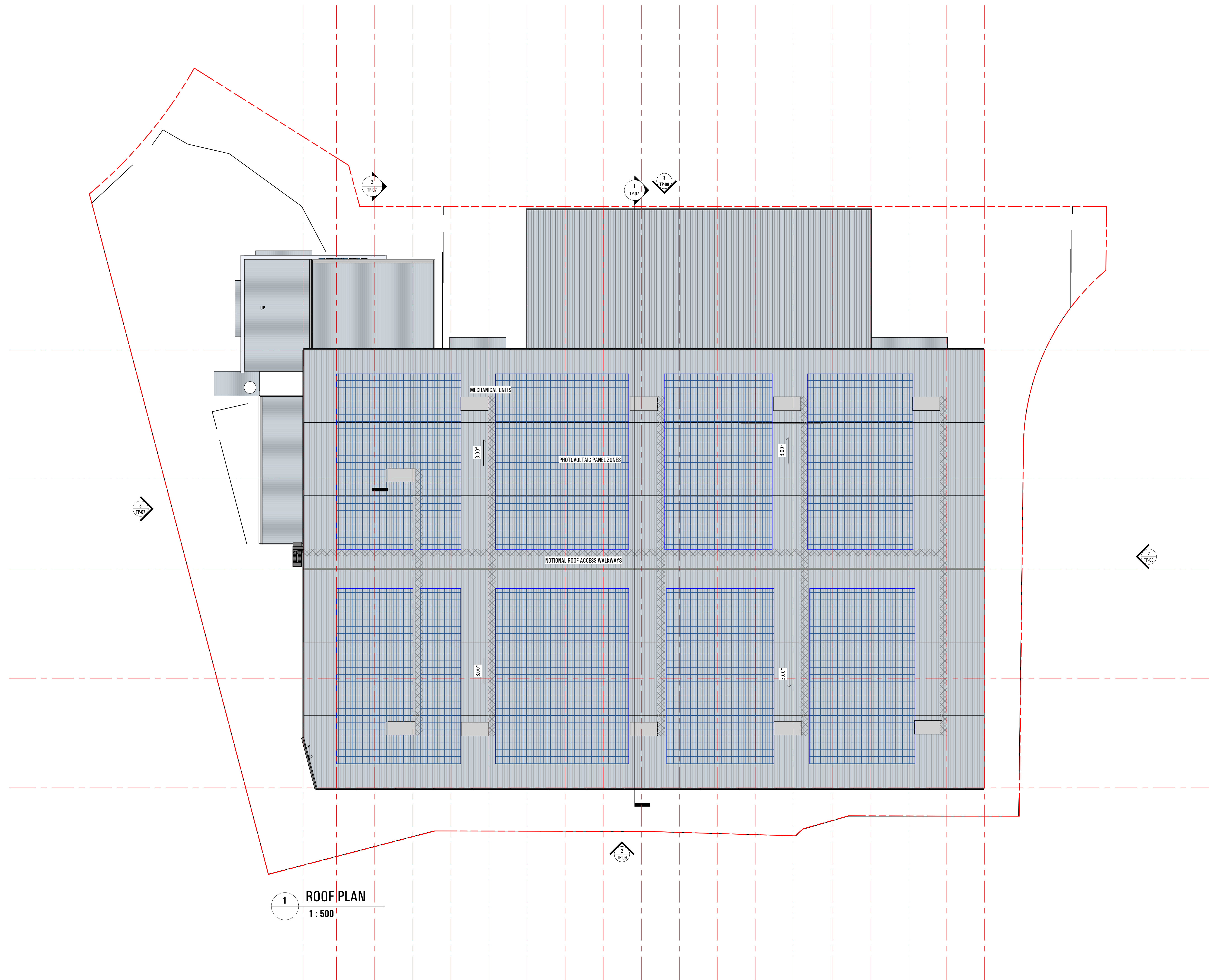


ENT2

1:750 @A1

SHEET NAME: SIGNAGE PLAN	
JOB NO. 4387-21	SCALE: 1 : 750
Drawing No: TP-03.1	ISSUE DATE: 10/02/2022
REVISION: C	DRAWN BY: FF

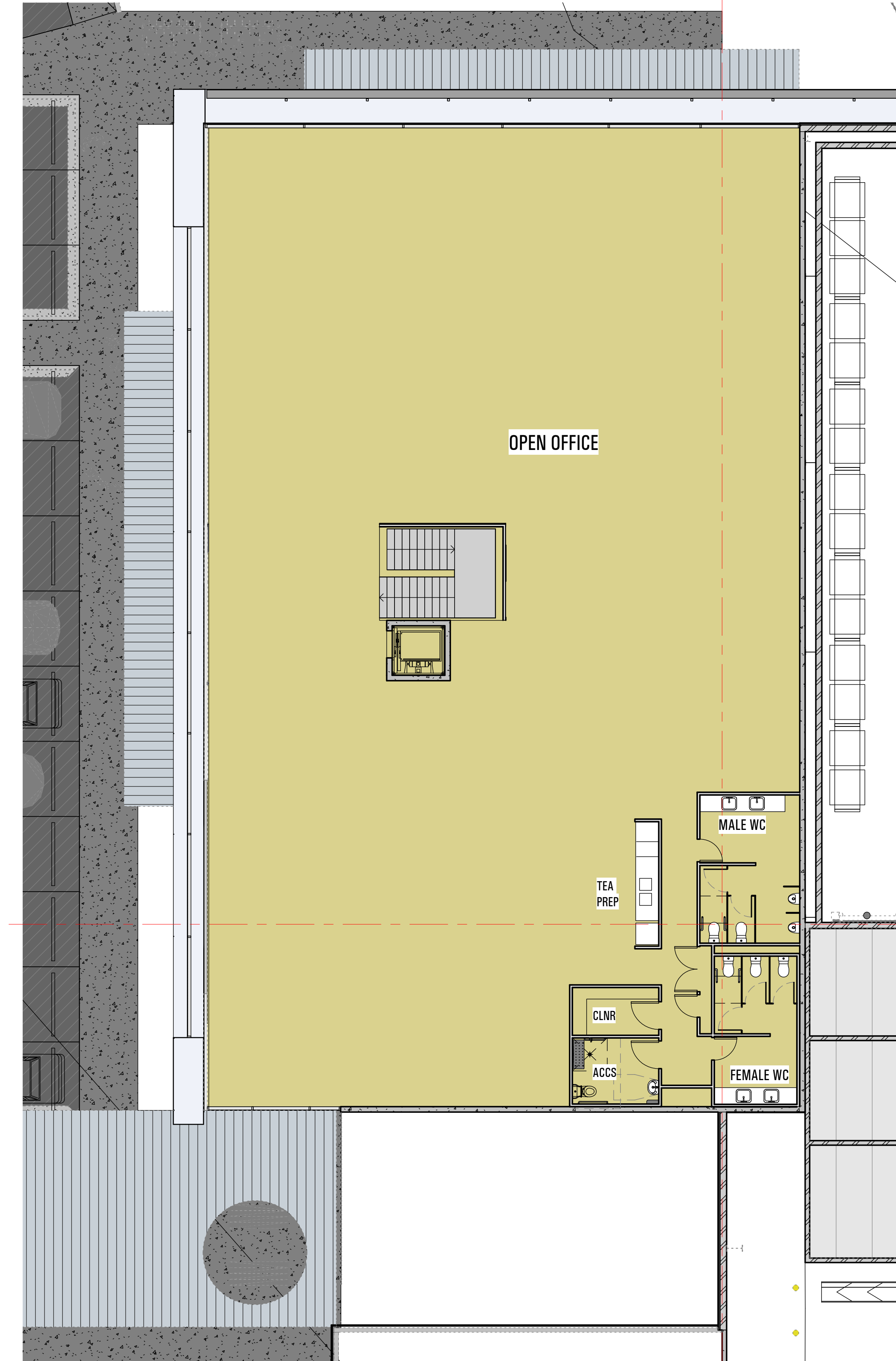
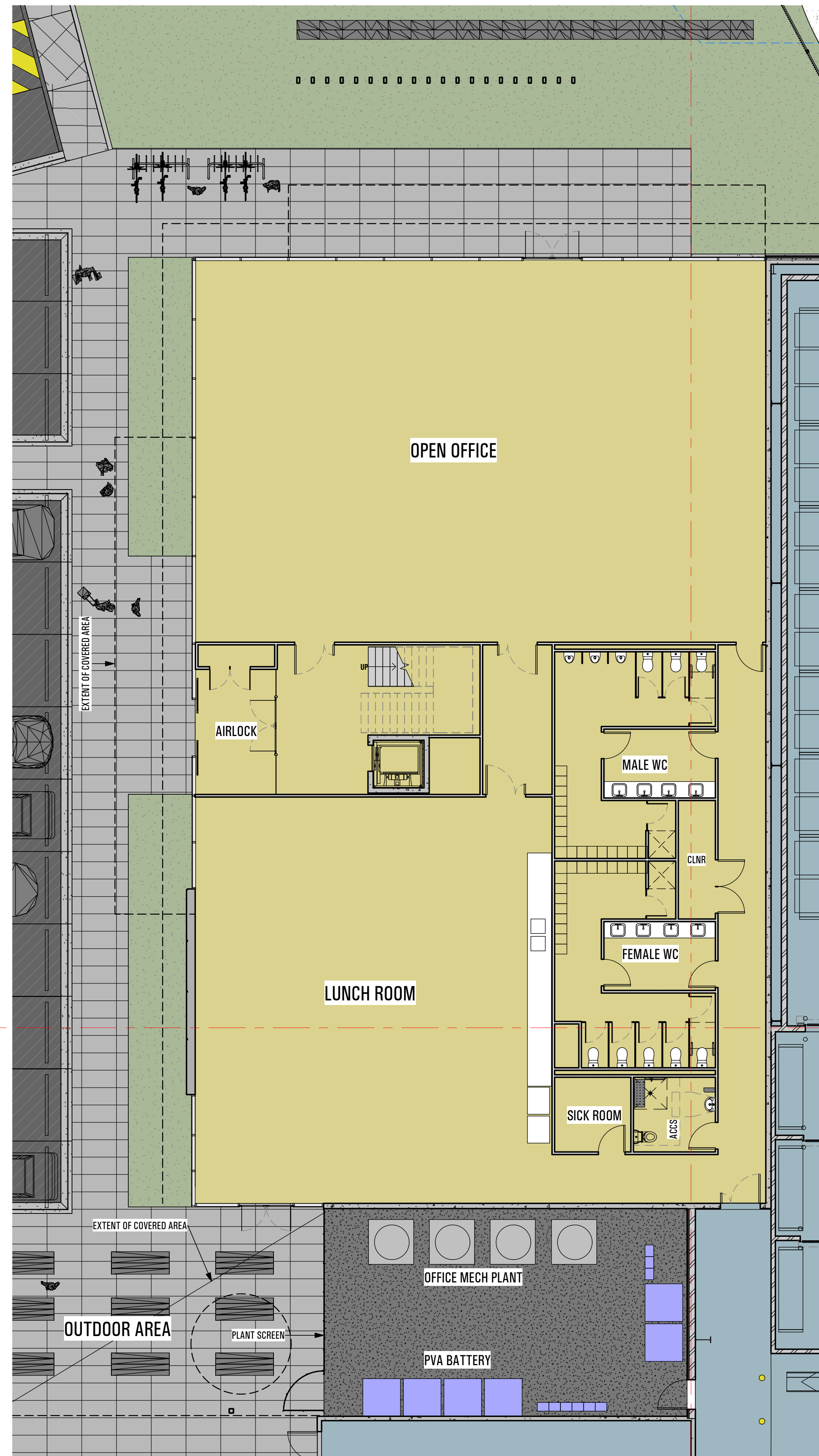
THIS WORK IS CONFIDENTIAL AND THE SUBJECT OF COPYRIGHT OWNED BY GANSTRUCT (AUST) PTY LTD. AND MADE IN AUSTRALIA IN 2008. SUBJECT TO THE COPYRIGHT ACT 1968 (CN) IT MAY NOT BE REPRODUCED, PUBLISHED, COMMUNICATED TO THE PUBLIC OR DISCLOSED TO ANY THIRD PARTY WITHOUT THE PRIOR WRITTEN CONSENT OF GANSTRUCT (AUST) PTY LTD. ANY IMPLIED LICENSE IS EXPRESSLY NEGATED. THIS NOTICE PREVAILS OVER ANY OTHER DOCUMENTATION UNLESS SUCH DOCUMENTATION HAS BEEN SIGNED ON BEHALF OF GANSTRUCT (AUST) PTY LTD.



1 ROOF PLAN
1 : 500

SHEET NAME: ROOF PLAN	
JOB NO. 4387-21	SCALE: 1 : 500
Drawing No: TP-04	ISSUE DATE: 3/02/2022
REVISION: B	DRAWN BY: FF

THIS WORK IS CONFIDENTIAL AND THE SUBJECT OF COPYRIGHT OWNED BY QANSTRUCT (AUST) PTY LTD. AND MADE IN AUSTRALIA IN 2008. SUBJECT TO THE COPYRIGHT ACT 1968 (CN) IT MAY NOT BE REPRODUCED, PUBLISHED, COMMUNICATED TO THE PUBLIC OR DISCLOSED TO ANY THIRD PARTY WITHOUT THE PRIOR WRITTEN CONSENT OF QANSTRUCT (AUST) PTY LTD. ANY IMPLIED LICENSE IS EXPRESSLY NEGATED. THIS NOTICE PREVAILS OVER ANY OTHER DOCUMENTATION UNLESS SUCH DOCUMENTATION HAS BEEN SIGNED ON BEHALF OF QANSTRUCT (AUST) PTY LTD.



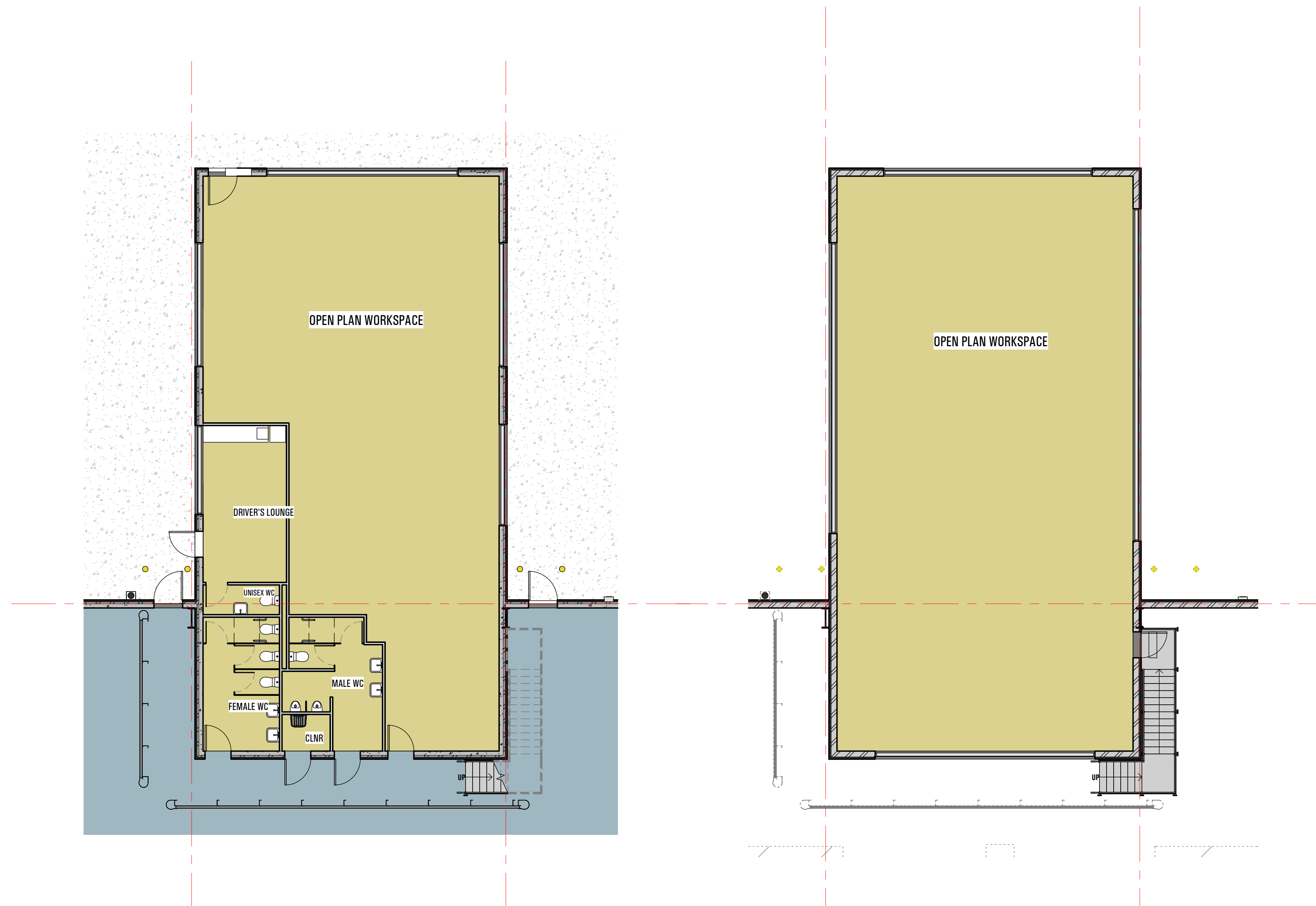
SHEET NAME: OFFICE PLANS SHT 1	
JOB NO. 4387-21	SCALE: 1 : 100
Drawing No: TP-05	ISSUE DATE: 3/02/2022
REVISION: B	DRAWN BY: FF

THIS WORK IS CONFIDENTIAL AND THE SUBJECT OF COPYRIGHT OWNED BY QANSTRUCT (AUST) PTY LTD. AND MADE IN AUSTRALIA IN 2008. SUBJECT TO THE COPYRIGHT ACT 1968 (CN) IT MAY NOT BE REPRODUCED, PUBLISHED, COMMUNICATED TO THE PUBLIC OR DISCLOSED TO ANY THIRD PARTY WITHOUT THE PRIOR WRITTEN CONSENT OF QANSTRUCT (AUST) PTY LTD. ANY IMPLIED LICENSE IS EXPRESSLY NEGATED. THIS NOTICE PREVAILS OVER ANY OTHER DOCUMENTATION UNLESS SUCH DOCUMENTATION HAS BEEN SIGNED ON BEHALF OF QANSTRUCT (AUST) PTY LTD.

Qanstruct Pty Ltd
ACN 070 953 874
ABN 88 765 907 859

500 Burwood Road,
Hawthorn, Victoria,
Australia 3122

Telephone (03) 9810 8300
Web: www.qanstruct.com.au



1 DOCK OFFICE GROUND FLOOR PLAN
1 : 100

2 DOCK OFFICE FIRST FLOOR
1 : 100

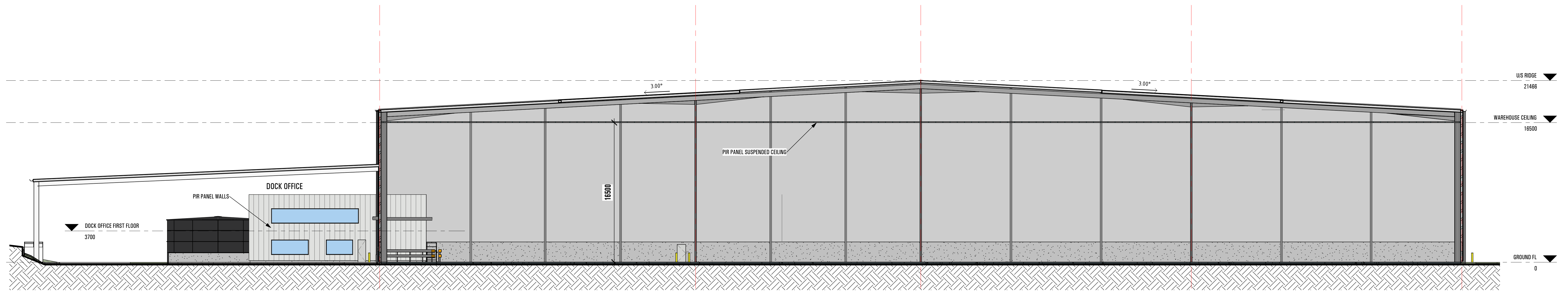
SHEET NAME: OFFICE PLANS SHT 2	
JOB NO. 4387-21	SCALE: 1 : 100
Drawing No: TP-06	ISSUE DATE: 3/02/2022
REVISION: B	DRAWN BY: FF

THIS WORK IS CONFIDENTIAL AND THE SUBJECT OF COPYRIGHT OWNED BY QANSTRUCT (AUST) PTY LTD. AND MADE IN AUSTRALIA IN 2008. SUBJECT TO THE COPYRIGHT ACT 1968 (CN) IT MAY NOT BE REPRODUCED, PUBLISHED, COMMUNICATED TO THE PUBLIC OR DISCLOSED TO ANY THIRD PARTY WITHOUT THE PRIOR WRITTEN CONSENT OF QANSTRUCT (AUST) PTY LTD. ANY IMPLIED LICENSE IS EXPRESSLY NEGATED. THIS NOTICE PREVAILS OVER ANY OTHER DOCUMENTATION UNLESS SUCH DOCUMENTATION HAS BEEN SIGNED ON BEHALF OF QANSTRUCT (AUST) PTY LTD.

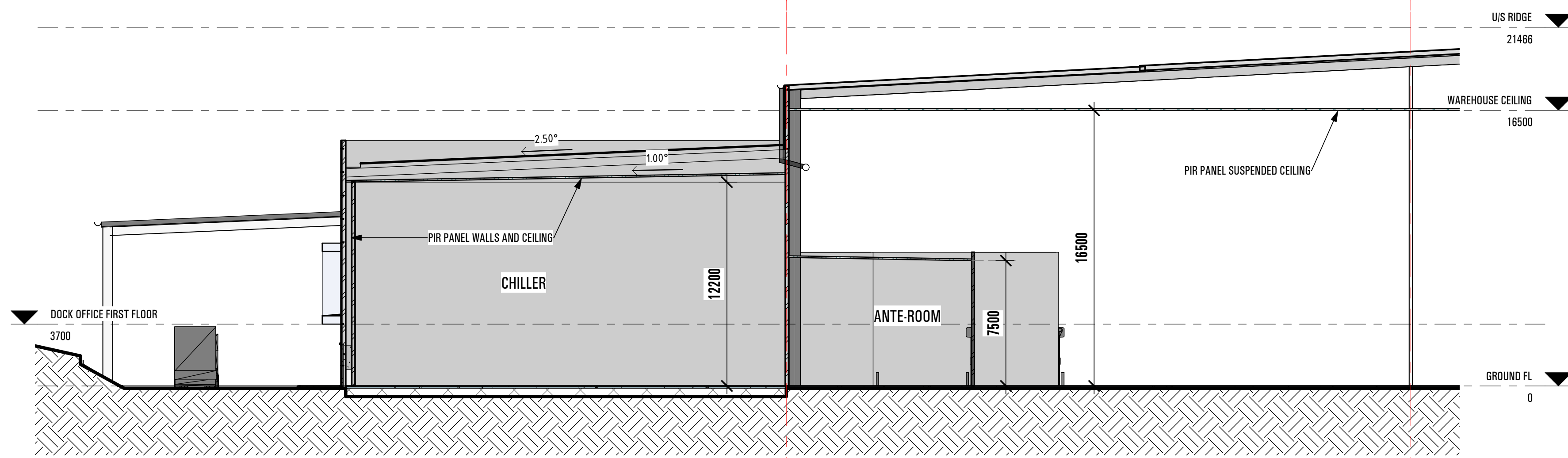
Qanstruct Pty Ltd
ACN 070 953 874
ABN 88 765 907 859

500 Burwood Road,
Hawthorn, Victoria,
Australia 3122

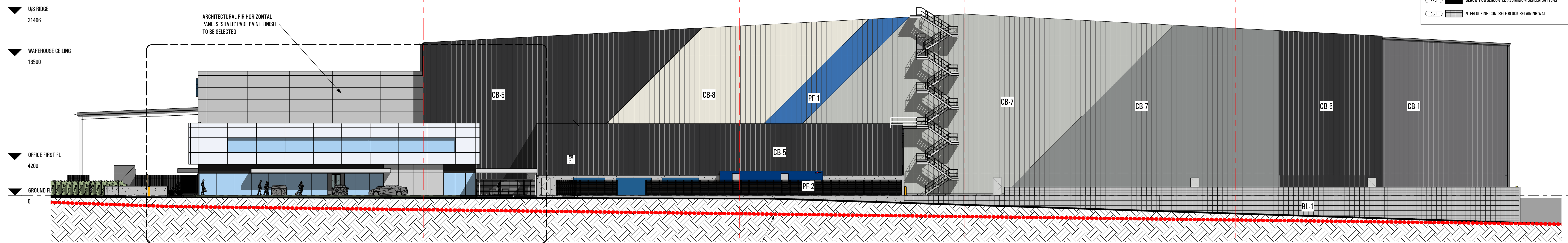
Telephone (03) 9810 8300
Web: www.qanstruct.com.au



1 SECTION A-A
1 : 200



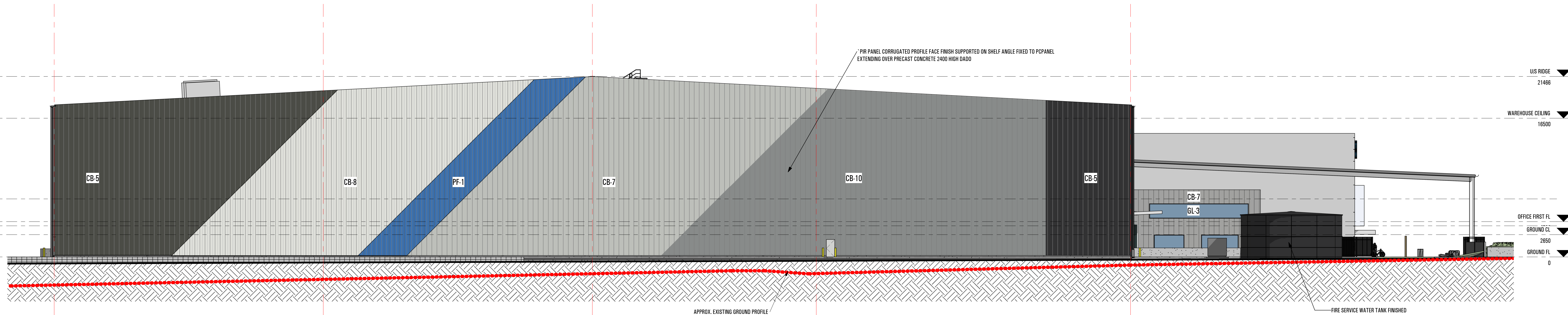
2 SECTION B-B
1 : 200



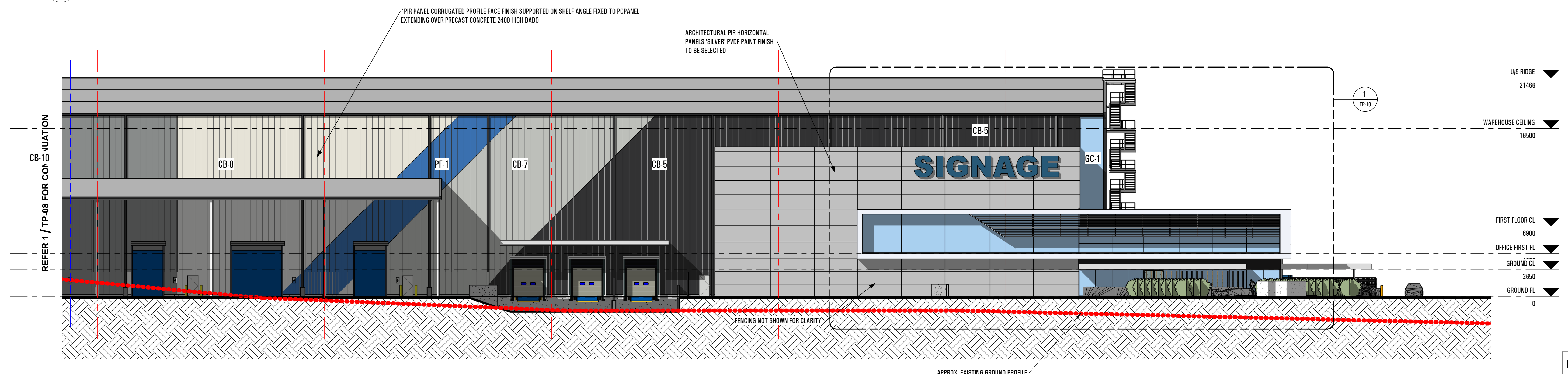
3 SOUTH ELEVATION
1 : 200

EXTERNAL FINISHES:

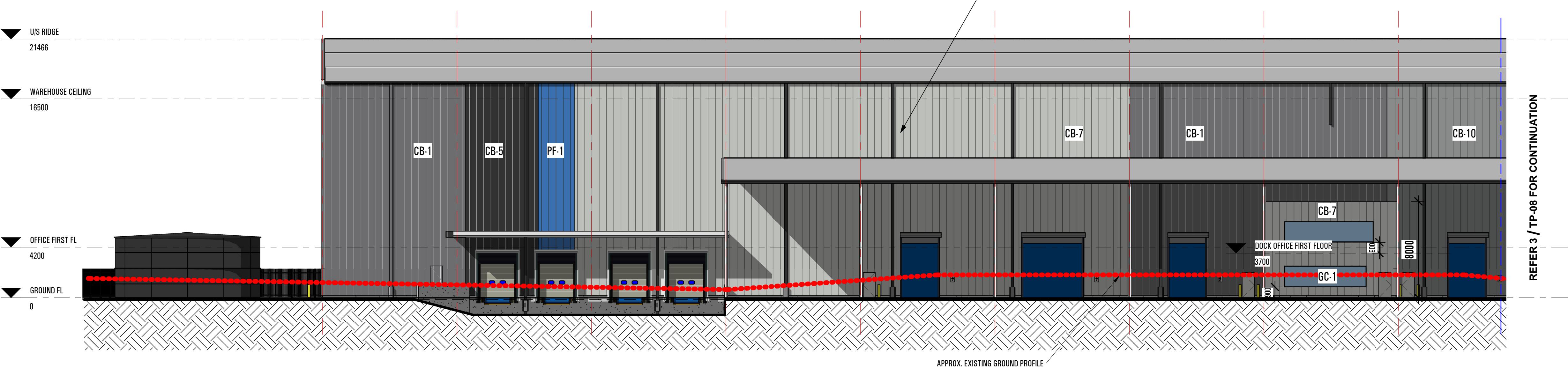
AF-1	WHITE EXPRESS JOINTED NON-COMBUSTIBLE ALUMINUM CLADDING AS SCHEDULED.
AF-2	BLACK EXPRESS JOINTED NON-COMBUSTIBLE ALUMINUM CLADDING AS SCHEDULED.
AF-3	SILVER METALIC EXPRESS JOINTED NON-COMBUSTIBLE ALUMINUM CLADDING AS SCHEDULED.
AF-4	BLACK EXPRESS JOINTED NON-COMBUSTIBLE ALUMINUM CLADDING AS SCHEDULED.
AF-5	SHALE GREY EXPRESS JOINTED NON-COMBUSTIBLE ALUMINUM CLADDING AS SCHEDULED.
CB-1	COLORBOND BASALT
CB-2	COLORBOND DEEP OCEAN
CB-3	COLORBOND DUNE
CB-4	COLORBOND MONUMENT
CB-5	COLORBOND MONUMENT
CB-6	COLORBOND MONUMENT LAYED HORIZONTAL
CB-7	COLORBOND NIGHT SKY
CB-8	COLORBOND SHALE GREY
CB-9	COLORBOND SURFMIST
CB-10	COLORBOND WALLABY
CB-11	COLORBOND WINDSPRAY
CB-12	COLORBOND WINDLAND GREY
PF-1	PAINT FINISH COLOUR TO MATCH CHARTER HALL BLUE
BL-1	BLUP TINT VISION GLAZING - REFER TO GLAZING SCHEDULE, FINISHES SCHEDULE & PART J REPORT FOR SPECIFICATION.
BL-2	CLEAR VISION GLAZING - REFER TO GLAZING SCHEDULE, FINISHES SCHEDULE & PART J REPORT FOR SPECIFICATION.
BL-3	COLORBACKED SPANREL GLAZING - REFER TO GLAZING SCHEDULE & FINISHES SCHEDULE, INSULATION BEHIND IN ACCORDANCE WITH PART J REPORT.
PC-1	PRECAST CONCRETE PANEL WITH MEMBRANE PAINT FINISH COLOUR DOLLA TIMLESS GREY SHAG
PF-2	BLACK POWDERCOATED ALUMINUM SCREEN BATTENS
CB-13	INTERLOCKING CONCRETE BLOCK RETAINING WALL



2 NORTH ELEVATION
1 : 200



3 WEST ELEVATION
1 : 200



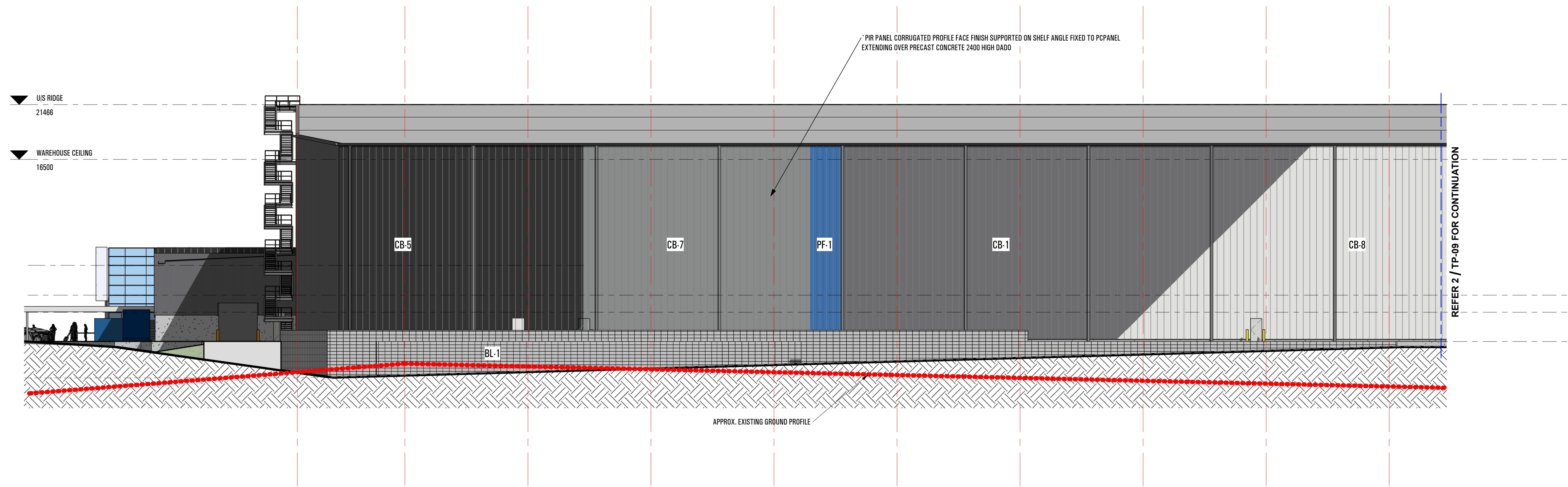
1 WEST ELEVATION -CONTINUATION
1 : 200

EXTERNAL FINISHES:

AP.1	WHITE EXPRESS JOINTED NON COMBUSTIBLE ALUMINIUM CLADDING AS SCHEDULED.
AP.2	SLUE EXPRESS JOINTED NON COMBUSTIBLE ALUMINIUM CLADDING AS SCHEDULED.
AP.3	SILVER METALLIC EXPRESS JOINTED NON COMBUSTIBLE ALUMINIUM CLADDING AS SCHEDULED.
AP.4	BLACK EXPRESS JOINTED NON COMBUSTIBLE ALUMINIUM CLADDING AS SCHEDULED.
AP.5	BLACK GREY EXPRESS JOINTED NON COMBUSTIBLE ALUMINIUM CLADDING AS SCHEDULED.
CB.1	COLORBOND BASALT
CB.2	COLORBOND DEEP OCEAN
CB.3	COLORBOND STONE
CB.4	COLORBOND HONEYCOMB
CB.5	COLORBOND MONUMENT
CB.6	COLORBOND MONUMENT - LAYER HORIZONTAL
CB.7	COLORBOND NIGHT SKY
CB.8	COLORBOND SHALE GREY
CB.9	COLORBOND SUBMIST
CB.10	COLORBOND WALLART
CB.11	COLORBOND WINDSPRAY
CB.12	COLORBOND WINDLAND GREY
PF.1	PAINT FINISH COLOUR TO MATCH CHARTER HALL BLUE
GL.2	SLUE TINT VISION GLAZING - REFER TO GLAZING SCHEDULE, FINISHES SCHEDULE & PART J REPORT FOR SPECIFICATION.
GL.3	CLEAR VISION GLAZING - REFER TO GLAZING SCHEDULE, FINISHES SCHEDULE & PART J REPORT FOR SPECIFICATION.
GC.1	COLORBACKED SPANDREL GLAZING - REFER TO GLAZING SCHEDULE & FINISHES SCHEDULE. INSULATION BEHIND IN ACCORDANCE WITH PART J REPORT.
PC.1	PRECAST CONCRETE PANEL WITH MEMBRANE PAINT FINISH COLOUR DULUX 'TIMELESS GREY SN46'
PC.2	BLACK POWDERCOATED ALUMINIUM SCREEN BATTENS
BL.1	INTERLOCKING CONCRETE BLOCK RETAINING WALL

SHEET NAME: ELEVATIONS	
JOB NO. 4387-21	SCALE: As indicated @B1 SIZED SHEET
Drawing No: TP-08	ISSUE DATE: 10/02/2022
REVISION: C	DRAWN BY: FF

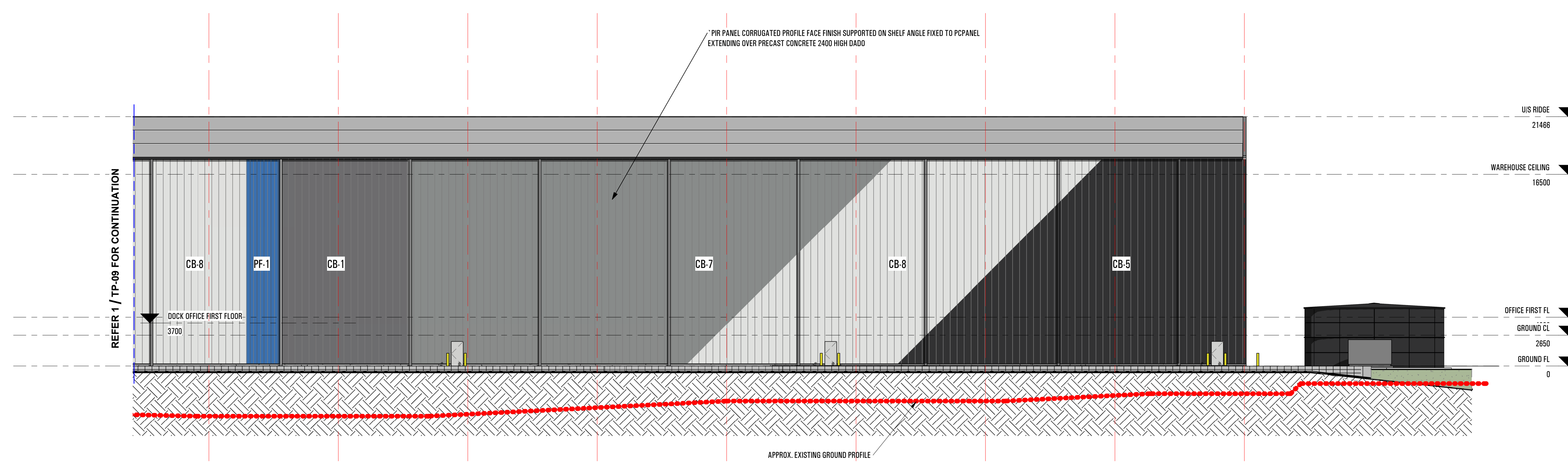
THIS WORK IS CONFIDENTIAL AND THE SUBJECT OF COPYRIGHT OWNED BY QANSTRUCT (AUST) PTY LTD. AND MADE IN AUSTRALIA IN 2008. SUBJECT TO THE COPYRIGHT ACT 1968 (CN) IT MAY NOT BE REPRODUCED, PUBLISHED, COMMUNICATED TO THE PUBLIC OR DISCLOSED TO ANY THIRD PARTY WITHOUT THE PRIOR WRITTEN CONSENT OF QANSTRUCT (AUST) PTY LTD. ANY IMPLIED LICENSE IS EXPRESSLY NEGATED. THIS NOTICE PREVAILS OVER ANY OTHER DOCUMENTATION UNLESS SUCH DOCUMENTATION HAS BEEN SIGNED ON BEHALF OF QANSTRUCT (AUST) PTY LTD.



1 EAST ELEVATION
1 : 200

EXTERNAL FINISHES:

AF.1	WHITE EXPRESS JOINTED NON COMBUSTIBLE ALUMINUM CLADDING AS SCHEDULED.
AF.2	BLUE EXPRESS JOINTED NON COMBUSTIBLE ALUMINUM CLADDING AS SCHEDULED.
AF.3	SILVER METALLIC EXPRESS JOINTED NON COMBUSTIBLE ALUMINUM CLADDING AS SCHEDULED.
AF.4	BLACK EXPRESS JOINTED NON COMBUSTIBLE ALUMINUM CLADDING AS SCHEDULED.
AF.5	SHINY GREY EXPRESS JOINTED NON COMBUSTIBLE ALUMINUM CLADDING AS SCHEDULED.
CB.1	COLORBOND 'BASALT'
CB.2	COLORBOND 'DEEP OCEAN'
CB.3	COLORBOND 'STONE'
CB.4	COLORBOND 'MONUMENT'
CB.5	COLORBOND 'MONUMENT' - LAYED HORIZONTAL
CB.6	COLORBOND 'MIGHT OCEAN'
CB.7	COLORBOND 'SHALE GREY'
CB.8	COLORBOND 'SUNRIMEST'
CB.9	COLORBOND 'WALLART'
CB.10	COLORBOND 'WINGSPRAY'
CB.11	COLORBOND 'WOODLAND GREY'
PF.1	PAINT FINISH COLOUR TO MATCH CHARTER HALL BLUE
BL.2	BLUE TINT VISION GLAZING - REFER TO GLAZING SCHEDULE, FINISHES SCHEDULE & PART J REPORT FOR SPECIFICATION.
BL.3	CLEAR VISION GLAZING - REFER TO GLAZING SCHEDULE, FINISHES SCHEDULE & PART J REPORT FOR SPECIFICATION.
BC.1	COLORBACKED SPANDREL GLAZING - REFER TO GLAZING SCHEDULE & FINISHES SCHEDULE, INSULATION BEHIND IN ACCORDANCE WITH PART J REPORT.
PC.1	PRECAST CONCRETE PANEL WITH MEMBRANE PAINT FINISH COLOUR DULUX 'TIMELSS GREY SNAGA'
PS.1	BLACK POWDERCOATED ALUMINUM SCREEN BATTENS
BL.1	INTERLOCKING CONCRETE BLOCK RETAINING WALL



2 EAST ELEVATION - CONTINUATION
1 : 200

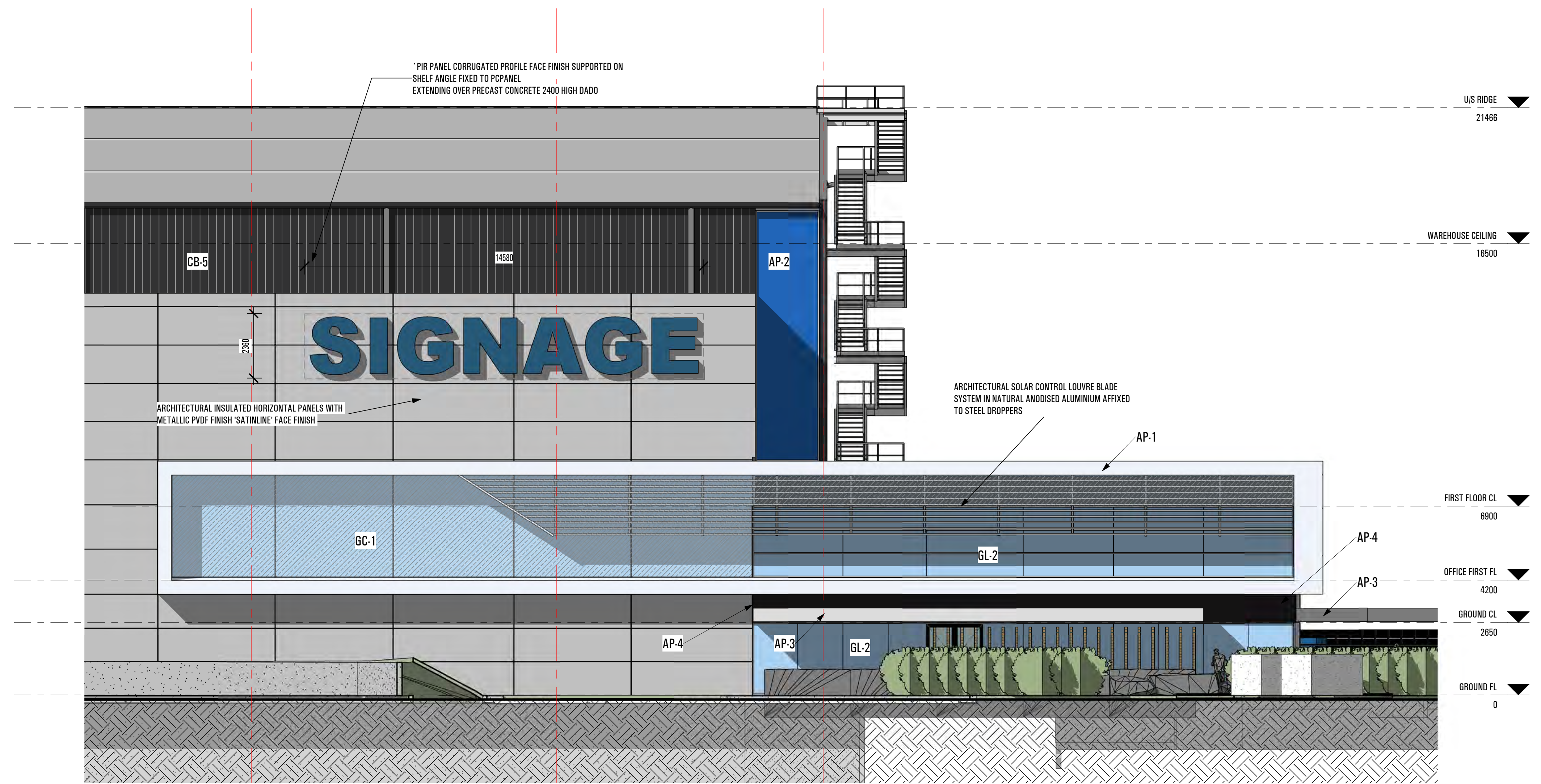
SHEET NAME: ELEVATIONS	
JOB NO. 4387-21	SCALE: As indicated @B1 SIZED SHEET
Drawing No: TP-09	ISSUE DATE: 10/02/2022
REVISION: c	DRAWN BY: FF

THIS WORK IS CONFIDENTIAL AND THE SUBJECT OF COPYRIGHT OWNED BY QANSTRUCT (AUST) PTY LTD. AND MADE IN AUSTRALIA IN 2008. SUBJECT TO THE COPYRIGHT ACT 1968 (CN) IT MAY NOT BE REPRODUCED, PUBLISHED, COMMUNICATED TO THE PUBLIC OR DISCLOSED TO ANY THIRD PARTY WITHOUT THE PRIOR WRITTEN CONSENT OF QANSTRUCT (AUST) PTY LTD. ANY IMPLIED LICENSE IS EXPRESSLY NEGATED. THIS NOTICE PREVAILS OVER ANY OTHER DOCUMENTATION UNLESS SUCH DOCUMENTATION HAS BEEN SIGNED ON BEHALF OF QANSTRUCT (AUST) PTY LTD.

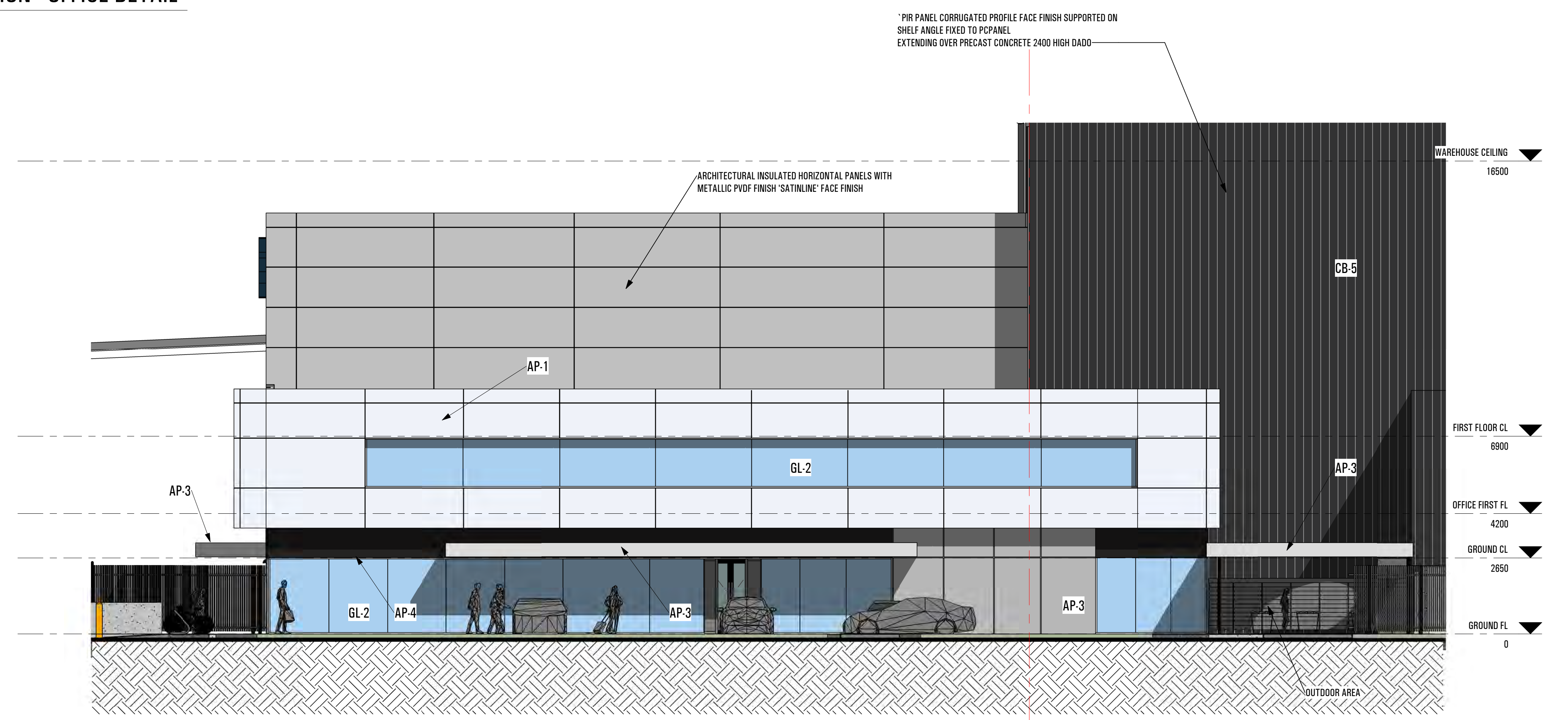
Qanstruct Pty Ltd
ACN 070 953 874
ABN 88 765 907 859

500 Burwood Road,
Hawthorn, Victoria,
Australia 3122

Telephone (03) 9810 8300
Web: www.qanstruct.com.au



1 WEST ELEVATION - OFFICE DETAIL
1:100



2 SOUTH ELEVATION - OFFICE DETAIL
1:100

EXTERNAL FINISHES:

AP-1	WHITE EXPRESS JOINTED NON-COMBUSTIBLE ALUMINUM CLADDING AS SCHEDULED.
AP-2	BLUE EXPRESS JOINTED NON-COMBUSTIBLE ALUMINUM CLADDING AS SCHEDULED.
AP-3	SILVER METALLIC EXPRESS JOINTED NON-COMBUSTIBLE ALUMINUM CLADDING AS SCHEDULED.
AP-4	BLACK EXPRESS JOINTED NON-COMBUSTIBLE ALUMINUM CLADDING AS SCHEDULED.
CB-5	DARK GREY EXPRESS JOINTED NON-COMBUSTIBLE ALUMINUM CLADDING AS SCHEDULED.
GC-1	COLORBOND BASALT
GC-2	COLORBOND DEEP OCEAN
GC-3	COLORBOND TRANCE
GC-4	COLORBOND TRONSTONE
GC-5	COLORBOND MONUMENT
GC-6	COLORBOND MONUMENT - LAYED HORIZONTAL
GC-7	COLORBOND NIGHT SKY
GC-8	COLORBOND SHALE GREY
GC-9	COLORBOND SURFMIST
GC-10	COLORBOND WALL-ART
GC-11	COLORBOND WINDSPRAY
GC-12	COLORBOND WOODLAND GREY
PC-1	PAINT FINISH COLOUR TO MATCH CHARTER HALL BLUE
GL-2	BLUE TINT VISION GLAZING - REFER TO GLAZING SCHEDULE, FINISHES SCHEDULE & PART J REPORT FOR SPECIFICATION.
GL-3	CLEAR VISION GLAZING - REFER TO GLAZING SCHEDULE, FINISHES SCHEDULE & PART J REPORT FOR SPECIFICATION.
GC-1	COLORBACKED SPANREL GLAZING - REFER TO GLAZING SCHEDULE & FINISHES SCHEDULE. INSULATION BEHIND IN ACCORDANCE WITH PART J REPORT.
PC-1	PRECAST CONCRETE PANEL WITH MEMBRANE PAINT FINISH COLOUR DULUX 'TIMELESS GREY 38464'
PS-2	BLACK POWDERCOATED ALUMINUM SCREEN BATTENS
BL-1	INTERLOCKING CONCRETE BLOCK RETAINING WALL

SHEET NAME: OFFICE DETAIL ELEVATIONS			
JOB NO.	4387-21	SCALE: As indicated	@B1 SIZED SHEET
Drawing No:	TP-10	ISSUE DATE:	3/02/2022
REVISION:	B	DRAWN BY:	FF

THIS WORK IS CONFIDENTIAL AND THE SUBJECT OF COPYRIGHT OWNED BY QANSTRUCT (AUST) PTY LTD. AND MADE IN AUSTRALIA IN 2008. SUBJECT TO THE COPYRIGHT ACT 1968 (CMA) IT MAY NOT BE REPRODUCED, PUBLISHED, COMMUNICATED TO THE PUBLIC OR DISCLOSED TO ANY THIRD PARTY WITHOUT THE PRIOR WRITTEN CONSENT OF QANSTRUCT (AUST) PTY LTD. ANY IMPLIED LICENSE IS EXPRESSLY NEGATED. THIS NOTICE PREVAILS OVER ANY OTHER DOCUMENTATION UNLESS SUCH DOCUMENTATION HAS BEEN SIGNED ON BEHALF OF QANSTRUCT (AUST) PTY LTD.

Qanstruct Pty Ltd
ACN 070 953 874
ABN 88 765 907 859

500 Burwood Road,
Hawthorn, Victoria,
Australia 3122

Telephone (03) 9810 8300
Web: www.qanstruct.com.au