



Sydney

Level 34, 259 George Street, Sydney NSW 2000

T +61 (0)2 9234 3888

Melbourne

Level 27, 101 Collins Street, Melbourne VIC 3000

T +61 (0)3 9221 6136

Canberra

Level 1, The Realm, 18 National Circuit, Barton, ACT 2600

T +61 (0)2 6198 3417

www.apa.net.au

Minarah College Catherine Field

Consultation Outcomes Report – 10 December 2021



Contents

Introduction	3
Report Overview	3
Proposal Summary	3
Community and Stakeholder Engagement.....	4
Purpose.....	4
Engagement Objectives	4
Secretary's Environmental Assessment Requirements (SEARs).....	4
Stakeholders	5
Communication and Engagement Activities	6
Engagement Outcomes	7
Next Steps.....	10
Appendix.....	11
Community Flyer	11
Adjacent Neighbour Letter	13
Media Coverage.....	15
Advertising – Local Newspaper	16
Websites	17
Virtual Community Session and Follow-Up Materials.....	19
Feedback form	30

Introduction

Report Overview

This Consultation Outcomes Report has been prepared to document community consultation undertaken to inform the State Significant Development (SSD) application for Minarah College - Catherine Field.

Consultation outcomes have been used in the preparation of an environment assessment that responds to the Secretary's Environmental Assessment Requirements (SEARs), issued by the NSW Department of Planning, Industry and Environment (DPIE).

This report summarises community engagement undertaken for this stage of the proposal by outlining:

- The planning requirements for consultation.
- The consultation process undertaken with the local community and stakeholders.
- A summary of feedback received, and issues raised.
- How feedback has been considered in the development of the SSD application.

Proposal Summary

Minarah College – Catherine Field is a new co-educational Kindergarten to Year 12 college proposed at 268–278 Catherine Fields Road, Catherine Field.

It will be a future-focused and purpose built school that will see children complete their entire education at one campus as they prepare for jobs of the future.

Minarah College – Catherine Field will eventually offer places for 1,580 students across primary and high school, as well as an early Learning Centre, Special Education School, and OOSH care.

It will be an inclusive school welcoming all students and families from the community, and would be thrilled to have all local students to support diverse and rewarding community connections. It will leverage the teaching expertise of Minarah College Green Valley, which topped the 2020 list of best performing schools in Liverpool based on NAPLAN results – opening as its second campus in this growing region.

New schools are urgently needed in the area, with the NSW Government estimating 77,978 student places are needed by 2036.

Minarah College would be proud to meet a small fraction of this demand and would deliver the school in stages, in line with growth in the local community.



Community and Stakeholder Engagement

Purpose

The purpose of the community and stakeholder engagement approach adopted for this proposal is to support a positive planning outcome for the community and stakeholders from the development.

The approach aligns with the Department of Planning, Industry and Environment's expectations around early and effective engagement on State Significant projects, and provides a framework for meaningful and tailored engagement with the community and stakeholders.

Engagement Objectives

- Identify community and stakeholders with an interest in the proposal or who may be impacted by the proposal.
- Inform the community and stakeholders of the proposal to raise awareness and understanding.
- Create opportunities for community and stakeholders to engage with the project team, ask questions and provide feedback.
- Capture feedback and share community and stakeholder insights with the project team to help them better understand potential impacts and mitigate them wherever possible, and identify opportunities for better planning outcomes.
- Report back to the community about how their feedback has been used to inform the proposal.
- Satisfy all statutory and regulatory community consultation requirements.

Secretary's Environmental Assessment Requirements (SEARs)

The SSD application for this proposal will adhere to the SEARs, which states the following requirements in relation to engagement:

"Detail engagement undertaken and demonstrate how it was consistent with the Undertaking Engagement Guidelines for State Significant Projects. Detail how issues raised and feedback provided have been considered and responded to in the project. In particular, applicants must consult with:

- *the relevant Department assessment team*
- *any relevant local councils*
- *any relevant agencies, including Transport for NSW*
- *the community*
- *if the development would have required an approval or authorisation under another Act but for the application of s 4.41 of the EP&A Act or requires an approval or authorisation under another Act to be applied consistently by s 4.42 of the EP&A Act, the agency relevant to that approval or authorisation."*

Stakeholders

Stakeholders engaged for the purposes of this Consultation Outcomes Report were the local community, including residents and businesses.

This included notification via direct email to the following key stakeholders:

- Government representatives:
 - + Camden Mayor, Deputy Mayor and Councillors
 - + State Member for Camden
 - + Federal Member for Macarthur
- Local faith community:
 - + Muslim League of NSW

The following educational entities were also notified of the proposal:

- + AISNSW - Association of Independent Schools of NSW
- + AHISA - Association of Heads of Independent Schools of Australia
- + NSW Department of Education
- + ACEL – Australian Council for Educational Leaders
- + Australian Childcare Alliance NSW
- + Early Learning Association Australia
- + Australian Association of Special Education (AASE) – NSW Chapter
- + Special Education Principals' and Leaders' Association

Other stakeholders that have been engaged as part of the process and reported on in other parts of the State Significant Development application are:

- + Camden Council and NSW Government agencies as per the planning process.
- + Indigenous groups.



Communication and Engagement Activities

The following range of communication and engagement activities have been implemented to ensure all identified stakeholders are made aware of the proposal and have an opportunity to participate in planning process:

- Information about the proposal and an invitation to online community sessions were shared with the community through flyers letterbox dropped to 945 residential dwellings and 8 commercial premises surrounding the site.
- In addition to the letterbox dropped flyer, letters were delivered along with the flyer to 17 adjacent neighbours inviting them to a dedicated online information for near neighbours only.
- Media coverage and an advertisement in the Camden-Narellan Times.
- Online community sessions, in line with health advice relating to COVID-19, were delivered to:
 - + Provide information about the proposal, the planning process and feedback opportunities.
 - + Provide opportunity for community and stakeholders to meet the project team, discuss the proposal, share feedback, and ask questions.
 - + Invite follow-up feedback through feedback forms.
 - + Provide a follow-up information sheet to participants with detail presented at the sessions.
- A dedicated project website to provide information and updates about the proposal, as well as information on the Minarah College Green Valley website.
- A dedicated project email for the community and stakeholders to ask questions and provide feedback was available throughout the consultation phase.
- Opportunity to contact the project team via the Minarah College Green Valley phone number.
- Stakeholder meetings and briefings including telephone and videoconferencing discussions with individual stakeholders and groups were offered.
- Stakeholder correspondence by email to individuals and organisations, and groups, including provision of a community information sheet and community questions and answers document.
- Updates to the community and stakeholders as the proposal progresses through the planning process, including reporting back to the community and stakeholders on issues raised and how the project team has responded through a community question and answers document.

Engagement Outcomes

There were 35 people who registered to participate in the online community session for general community members, with 28 people joining the session. There were a number of follow-up phone calls, emails and one-on-one and group meetings arising from the session. Community feedback was provided by phone, email and via a feedback form.

There were no registrations for the dedicated online community session for near neighbours, however, some near neighbours attended the general community session as above.

A meeting was held between the State Member for Camden and the principal of Minarah College on 3 December 2021 to discuss the proposal.

Engagement identified key issues of community interest to inform the State Significant Development (SSD) application.

Key issues that emerged from the feedback, and the project response, are described in the following table.

KEY ISSUES	PROJECT RESPONSE
<p>Planning and construction</p> <p>Questions were asked about timing and details around the planning process, construction program and staged opening of the school. Questions were also asked about whether any approvals had been granted to date from Camden Council or other authorities, and the engagement with Camden Council so far. A concern was raised about vibrations from heavy vehicles during roadworks.</p>	<ul style="list-style-type: none"> The proposal is being assessed as a State Significant Development by the NSW Government, and it is hoped the process will be completed by the end of 2022, though this will depend on the government's timelines. The proposal is in the early planning phase and no approvals have been granted to date. Camden Council is a key stakeholder in the process. The project team has had an initial meeting with Council about the proposal and will continue to liaise with them throughout the planning phase. If all planning milestones are met, construction of the first stage of the new campus could start in 2024, for opening at the start of the 2025 school year. Student numbers would start small and then grow to 320 students as part of the first stage. Future stages would be delivered over the next 20 years to align with growth in the local community. Specific timeframes for these stages are not currently known as they will be dependent on local population growth. A detailed construction and construction traffic management plan will form part of the State Significant Development application. This will cover vehicle movements, noise and vibration. These documents will also need to be approved prior to any works commencing. The project team will engage with neighbours before construction work starts to minimise impacts as much as possible.
<p>Traffic and parking</p> <p>Residents raised questions about the capacity of local roads to accommodate increased traffic, slowing traffic around the school, and associated safety issues. It was noted that the site is located at a curve</p>	<ul style="list-style-type: none"> Robust traffic and parking studies will form part of the State Significant Development application and will need to demonstrate that vehicle movements generated by the school – both



<p>and rise in the road, which increased safety concerns. Concerns were raised about congestion around the site despite internal pick-up/drop-off and that staggered start and finish times would extend periods of impact, and would need to accommodate families with children across multiple grades. A question was asked about the number of car parking spaces on site, and concerns were raised about parking outside of the school site both during normal use and school functions, and how this would be accommodated on Catherine Fields Road. There were some questions around who would fund an upgrade of Catherine Fields Road, and whether that would fall to rate payers. Safety concerns were raised in relation to the increase in foot traffic with there being no footpath. There was one comment about homes along Catherine Fields Road being built close to the road, and not having capacity to lose frontage should road widening and associated land acquisition be required.</p>	<p>during construction and once opened – can be accommodated safely on the local road network.</p> <ul style="list-style-type: none">• Staggered start and finish times have been recommended by the traffic engineers. This will slightly extend traffic movements around the site with a view to mitigating other impacts such as congestion and noise, however, these times would not deviate too far from standard school hours. During these periods there will be increased traffic movements around the school, but peaks will dissipate relatively quickly. The school will make arrangements for families across multiple grades, with this most likely involving students who finish earlier waiting in a specified area until their siblings are finished.• The project team has had initial discussions with Transport for NSW and preliminary discussions with Camden Council around traffic and these will continue.• Some form of upgrade to Catherine Fields Road in front of the site is likely to be a planning requirement to accommodate vehicle movements into the College. Any upgrades or widening required to support the school's operations, such as improvements directly in front of the school, would be a responsibility of the school and not rate payers, and would be accommodated on the school site.• The provision of a footpath on Catherine Fields Road in front of the site may be requirement of Camden Council with the intention for this to connect to any future plans for footpath along Catherine Fields Road.• Catherine Fields Road has an 80km speed limit in front of the school, which drops to 60km just to the south. This matter would need to be given further consideration by Camden Council as it is a local road, and there may be a requirement for the introduction of a school zone for reduced speed during specified hours.• Traffic impacts will be reduced through the provision of private chartered buses for students, and the project team is also in discussion with Transport for NSW about providing additional public transport in the area. The traffic studies that will form part of the State Significant Development application will consider increased bus movements on the local road network.• Car parking numbers have not been confirmed at this stage, however, there will be sufficient parking for staff, students and visitors, and the school will have management plans in place to prevent parking on local streets.• Parking arrangements for school events will be considered as part of an operational management plan that will form part of the State Significant Development application. It is expected that events will need to be managed to ensure parking is limited to the school site given there are no parking provisions on surrounding roads. This may involve using the oval for overflow parking during events such as
--	--

	<p>graduations to ensure all parking can be accommodated on site.</p> <ul style="list-style-type: none"> An indented bus parking bay along Catherine Fields Road directly in front of the site is being considered by the project team. This could also be used for visitor parking outside of pick-up and drop-off times. It would be subject to approval by Camden Council.
<p>Operations</p> <p>Questions were asked about the school's hours of operations, including OOSH care, and whether use by the community of sports facilities would entail weekend sport on site, with some suggesting that this would be more impactful than beneficial for the majority of near neighbours. A concern was raised about noise and light spill from the school generally. Questions were also asked about the number of staff on site. A question was asked about whether it will be an Islamic school, and if the school needs to be welcoming of students from all faiths, or no faith, to be eligible for government funding. There were enquiries about enrolment at the school, the teaching of religion, cultural/religious aspects of the uniform, and the special education offer.</p>	<ul style="list-style-type: none"> School and OOSH care hours will be typical of other public and independent schools. Details around how sports facilities could be shared with the community will form part of the part of the State Significant Development application, taking into consideration community feedback. Lighting in and around the school will meet stringent standards to avoid light spilling on to the street and any loss of amenity to neighbours. Noise will be mitigated using a range of acoustic treatments and barriers to ensure that it meets acceptable standards and that neighbour amenity is maintained. Staff numbers will start small and then build to 32 staff on completion of the first stage of the College. They will then continue to gradually increase to 106 staff as the College grows over the next 20 years. The College will have an ethos that follows the principles of the religion of Islam, and it will be open to all students to enable diverse and rewarding community connections. The College's welcoming approach is irrespective of its funding. The Catherine Field campus would be funded through bank loans. Details about enrolling at the school will be shared as soon as the planning process permits. Students will be taught religion, though non-Islamic students will have the option to not join prayer sessions, and instead participate in other quiet learning activities during these times. Parts of the uniform that are designed for students from the Islamic faith, such as head coverings for girls, would not need to be worn by non-Muslim students. There will be a Special Education School, and this will cater for students with moderate to high learning and support needs. The mix of students will be considered when the planning process is further progressed.
<p>Buildings and Design</p> <p>Questions were asked about fencing to maintain privacy for neighbours, and plans for any other buildings on the site.</p>	<ul style="list-style-type: none"> A range of privacy measures will be considered to maintain privacy for neighbours, such as privacy screens, louvres and decorative mesh for windows on the upper floor of school buildings, and landscaping for screening along the boundaries. There will also be a generous setback from school buildings to neighbouring properties, and landscaping and fencing to provide separation. No other buildings are currently being considered for the site.



Environment A concern was raised about the cumulative impact on the environment and animal habitats from developments in the area, including turtles.	<ul style="list-style-type: none">• Environmental studies will be completed as part of the State Significant Development application, and these will identify any potential impacts on the environment and outline how those impacts will be mitigated. This will include biodiversity and ecology studies.• Stormwater and overland flow will be managed so as not to cause any negative impact on neighbouring properties.
Strategic context and infrastructure Questions were asked around whether the proposed school would affect plans for rezoning surrounding land for increased residential density. One concern was raised about the school not aligning with community needs in the semi-rural area. A question was raised about how Catherine Field's current septic system would accommodate the school.	<ul style="list-style-type: none">• The proposed school will not have an impact on any potential rezoning in the area by the NSW Government or Camden Council. However, the location is part of the South West Growth Area and there have been recent rezonings nearby in precincts like Oran Park and Leppington.• New schools are urgently needed in the area, and this proposal will meet a small fraction of the demand as the local population grows.• Access to sewer carriers is a key consideration in the staged opening of the school. The project team has had initial discussions with Sydney Water around the provision of sewerage services, and in the interim, the size of the school will not exceed that which can be supported by a waste water system that is independent of mains sewerage.

Next Steps

The project team will remain available to engage with the community about the proposal as it progresses through the planning process, in line with both the SEARs and the project team's commitment to community engagement.

Appendix

Community Flyer

View our proposal

New independent school proposed for Catherine Field

268–278 Catherine Fields Road, Catherine Field

A new co-educational Kindergarten to Year 12 college is being proposed for the local community, with classrooms and facilities to be future-focused and purpose built to prepare students for jobs of the future.

Minarah College – Catherine Field would accommodate 1,580 students, including an Early Learning Centre, Special Education School, and OOSH care.

It will be an inclusive school welcoming all students and families from the community, and would be thrilled to have all local students to support diverse and rewarding community connections. It will leverage the teaching expertise of Green Valley Islamic College, which topped the 2020 list of best performing schools in Liverpool based on NAPLAN results – opening as its second campus in this growing region.

New schools are urgently needed in the area, with the NSW Government estimating 77,978 student places are needed by 2036. Minarah College would be proud to meet a small fraction of this demand and would deliver the school in stages, in line with growth in the local community.

Join us for an online community session to learn more, meet the project team, ask questions, and provide feedback.

Thursday 11 November
6.45pm – 7.15pm

Online registration is essential, and you will need to create a free Eventbrite account to register.
minarahcommunity.eventbrite.com.au

Email questions to
enquiries@minarahcollege.com.au

Excellence in education for Western Sydney

Families of Western Sydney deserve the highest standards of education, and the proposed new school would offer the latest technology, STEAM and VET opportunities, to prepare students for a diverse range of university and vocational careers.

Minarah College – Catherine Field would represent a \$70 million investment in the local community and would create 150 jobs during construction and 140 new full time/part time jobs once opened.

It is appreciated that the proposed school will mean changes for neighbours.

As part of our commitment to being a good neighbour, Minarah College is taking a number of steps to ensure the school is a valuable addition to the local neighbourhood:

- All drop-off and pick-ups, including school buses and deliveries, will be managed within the school site, with ample parking for staff and students, to support quick and easy vehicle movements around the school.
- Provisions will be made to share access to new school facilities, such as sports fields, with the local community.
- The school buildings will be designed to reflect local character, and native landscaping will be used to complement the semi-rural surrounds and preserve visual amenity for neighbours.

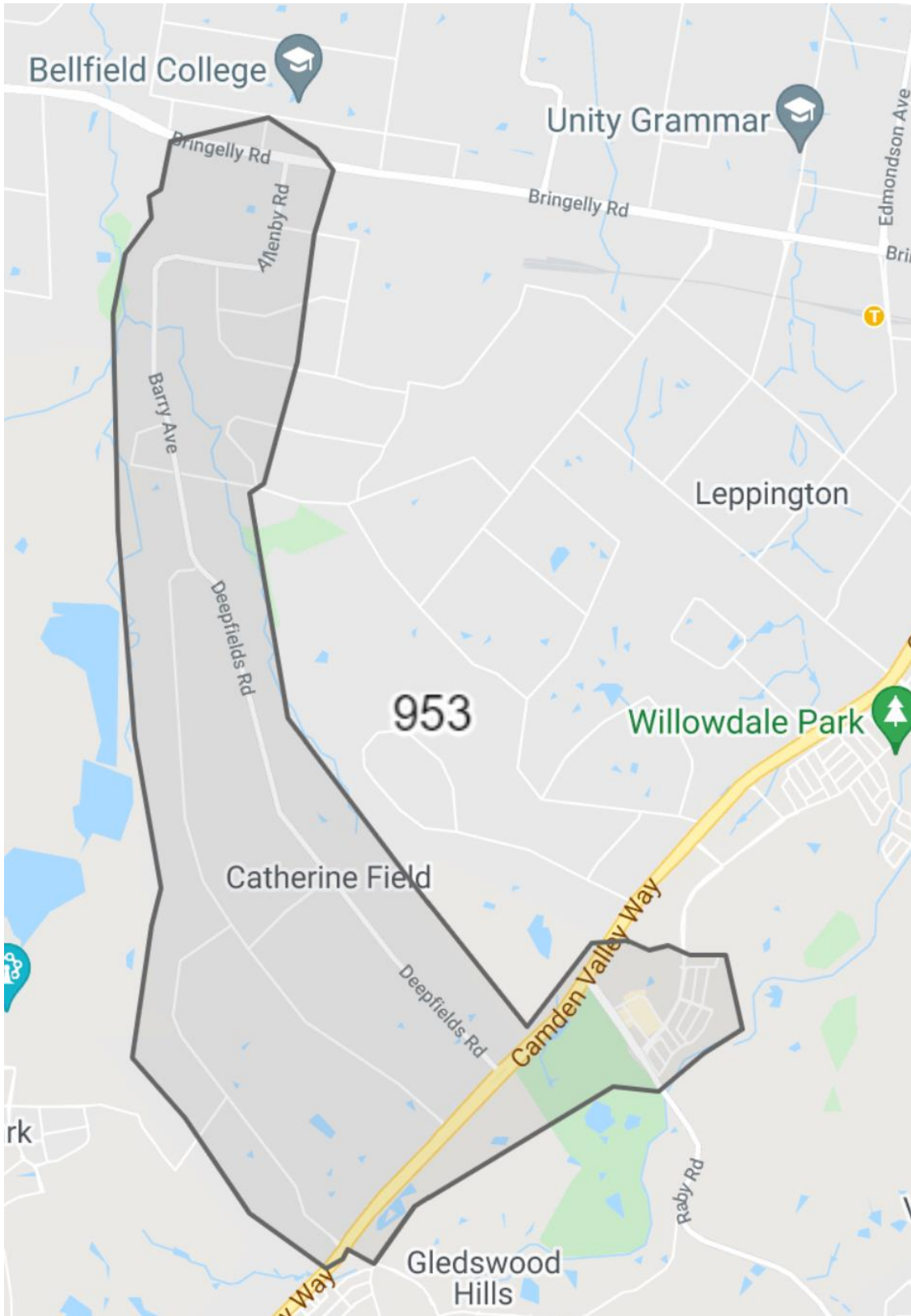
- The project will strive for the highest Green Star rating obtainable with the Green Building Council Australia, ensuring a positive contribution to local sustainability.

If you would like to learn more or have any questions, please register to attend our online community session.





Community Flyer - Distribution



Adjacent Neighbour Letter

IMPORTANT INFORMATION TO THE RESIDENT

New independent school proposed for Catherine Field

Dear Neighbour

I am writing to let you know that a new independent college is being proposed at 268-278 Catherine Fields Road, Catherine Field.

Minarah College – Catherine Field will be a co-educational Kindergarten to Year 12 school, with classrooms and facilities to be future-focused and purpose built to prepare students for jobs of the future.

The new inclusive school will welcome all students and families from the community, and would be thrilled to have all local students to support diverse and rewarding community connections. It will leverage the teaching expertise of Green Valley Islamic College, which topped the 2020 list of best performing schools in Liverpool based on NAPLAN results – and is proposed to open as its second campus.

The new school would be built in stages to eventually offer places for 1,580 students across primary and high school, as well as an Early Learning Centre, Special Education School, and OOSH care. It will offer families a stable anchor for all a child's needs from age 2 to Year 12.

Pending approval, the first stage would be built to open for the start of the 2025 school year, accommodating 320 students – with the school growing progressively over the next 20 years in line with the local population.

As one of our close neighbours, it is important to let you know about our plans and invite you to be involved in the process.

We appreciate you may be interested in the details and would like to invite you to an **online community session for near neighbours on Thursday 11 November, 6pm – 6.30pm**. At this session, you will learn more about the proposal, meet the project team (virtually), and have the opportunity to ask questions and provide feedback.

Online registration is essential, and you will need to create a free Eventbrite account to register. Go to minarahneighbours.eventbrite.com.au

The presentation and supporting information will be shared on the Minarah College – Catherine Field website after the session – visit www.minarahcollege.com.au

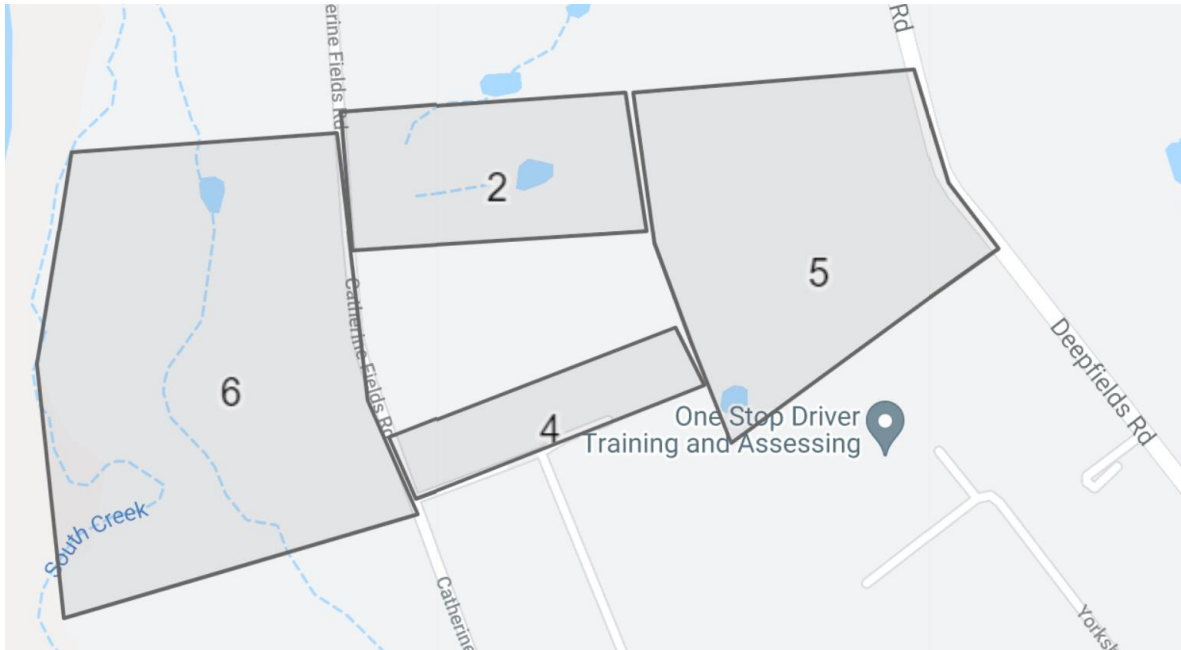
We look forward to keeping you informed as our plans progress.

Kind regards
Dominique Wolfe

The Community Engagement Team
Minarah College Community Engagement Team – Proposed Catherine Field campus
enquiries@minarahcollege.com.au



Adjacent Neighbour Letter – Distribution



Media Coverage

Camden-Narellan Times
3 November 2021
Page 2

Information sessions on the way K-12 school proposed

EDUCATION

BY JESS LAYT

PLANNING is under way for a new \$70 million school at Catherine Field.

Minarah College - Catherine Field would be an independent Kindergarten to Year 12 school off Catherine Fields Road intended to house more than 1500 students on one campus.

It would also include an early learning centre, special education school and OOSH (Out of School Hours) care, and would create 150 jobs during construction and 140 jobs once operational.

The proposed school is an off-shoot of Green Valley Islamic College, which will be rebranded as Minarah College - Green Valley in 2022 to further connect the two campuses.

Minarah College principal Jay Halai said families in the south-west deserved



An artist's impression of the planned Minarah College for K-12 at Catherine Field. **Picture: Supplied**

the highest standards of education.

"Minarah College will embody the optimism of this area, which is soon to welcome Australia's newest city, Bradfield, with its research inno-

ventions, and Western Sydney International Airport, which will connect Western Sydney to the global stage," he said.

"New schools are urgently needed in this area, with the NSW Government estimat-

ing 77,978 student places will be needed by 2036.

"We are proud to be able to meet a small fraction of this demand and will deliver the school in stages, growing in line with the local popula-

tion.

"We do appreciate that a new school will mean changes for our near neighbours, and while we are in the early planning stages, we are reaching out to the local community now so we can use their feedback to create the type of facilities this area not only needs, but deserves."

Locals are invited to a community information session on Thursday, November 11 from 6.45pm-7.15pm.

Residents can learn more about the proposal, meet the project team and ask questions.

"We are looking forward to getting to know our new neighbours, and inviting them to take an active part in our school community," Mr Halai said.

Those who wish to attend the Minarah College community forum must register at minarah-community.eventbrite.com.au.



Advertising – Local Newspaper

Camden-Narellan Times
3 November 2021
Page 2

View our proposal

New independent school proposed for Catherine Field

268-278 Catherine Fields Road, Catherine Field

A new co-educational Kindergarten to Year 12 college is being proposed for the local community, with classrooms and facilities to be future-focused and purpose built to prepare students for jobs of the future.

Minarah College – Catherine Field would accommodate 1,580 students, including an Early Learning Centre, Special Education School, and OOSH care.

It will be an inclusive school welcoming all students and families from the community, and would be thrilled to have all local students to support diverse and rewarding community connections. It will leverage the teaching expertise of Green Valley Islamic College, which topped the 2020 list of best performing schools in Liverpool based on NAPLAN results – opening as its second campus in this growing region.

New schools are urgently needed in the area, with the NSW Government estimating 77,978 student places are needed by 2036. Minarah College would be proud to meet a small fraction of this demand and would deliver the school in stages, in line with growth in the local community.

Join us for an online community session to learn more, meet the project team, ask questions, and provide feedback.

Thursday 11 November, 6.45pm – 7.15pm

Online registration is essential, and you will need to create a free Eventbrite account to join the event.

minarahcommunity.eventbrite.com.au

Websites

Website: Minarah College Catherine Field

Minarah College - Catherine Field

[Home](#)
[Contact Us](#)

A new independent K-12 college is being proposed at 268–278 Catherine Fields Road, Catherine Field, with classrooms and facilities to be future-focused and purpose built to prepare students for jobs of the future.

Minarah College – Catherine Field would eventually accommodate 1,580 students, including an Early Learning Centre, Special Education School, and OOSH care.

It will be an inclusive school welcoming all students and families from the community, and would be thrilled to have all local students to support diverse and rewarding community connections. It will leverage the teaching and learning expertise of Green Valley Islamic College, which topped the 2020 list of best performing schools in Liverpool based on NAPLAN results – opening as its second campus in this growing region.

New schools are urgently needed in the area, with the NSW Government estimating 77,978 student places are needed by 2036. Minarah College would be proud to meet a small fraction of this demand and would deliver the school in stages over the next 20 years, in line with growth in the local community.

Families of Western Sydney deserve the highest standards of education, and the proposed new school would offer the latest technology, STEAM and VET opportunities, to prepare students for a diverse range of university and vocational careers.

Minarah College – Catherine Field would represent a \$70 million investment in the local community, and would create 150 jobs during construction and 140 new full time/part time jobs once opened.





Website: Minarah College – Catherine Field (continued)

Community Engagement

You are invited to an online community session to learn more about the proposal, meet the project team, ask questions and provide feedback.

To register, go to minarahcommunity.eventbrite.com.au – you will need to create a free Eventbrite account.

It is appreciated that the proposed school will mean changes for neighbours, and we would welcome your feedback on our early plans.

We are taking a number of steps to ensure the school is a valuable addition to the local neighbourhood:

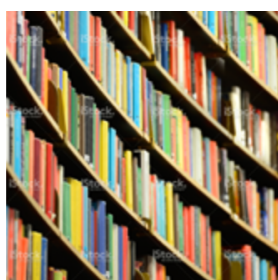
- All drop-off and pick-ups, including school buses and deliveries, will be managed within the school site, with ample parking for staff and students, to support quick and easy vehicle movements around the school.
- Provisions will be made to share access to new school facilities, such as sports fields, with the local community.
- The school buildings will be designed to reflect local character, and native landscaping will be used to complement the semi-rural surrounds and preserve visual amenity for neighbours.
- The project will strive for the highest Green Star rating obtainable with the Green Building Council Australia, ensuring a positive contribution to local sustainability.

More Information

This website will be updated as the proposal progresses through the planning process.

Early planning documents for the proposal are on the NSW Major Projects website.

Website: Minarah College Green Valley



New Campus

October 27, 2021/ Announcements , Category

We have a proposal to open a new campus in Catherine Field, a growing part of Western Sydney.

The new campus will leverage the teaching and learning expertise of our school, and we are delighted to be in a position to take everything we value about Green Valley Islamic College and apply it to a new location.

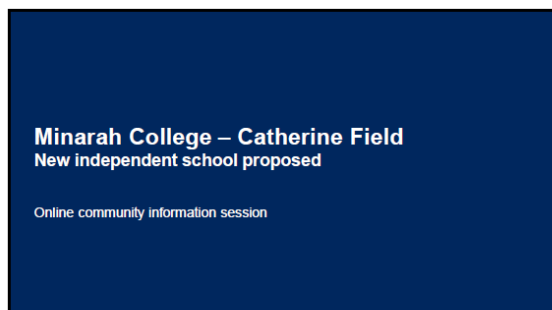
The new school would be built in stages to eventually offer places for 1,580 students across primary and high school, as well as an Early Learning Centre, Special Education School, and OOSH care. It will offer families a stable anchor for all a child's needs from age 2 to Year 12.

Pending approval, the first stage would be built to open for the start of the 2025 school year, accommodating 320 students – with the school growing progressively over the next 20 years in line with the local population.

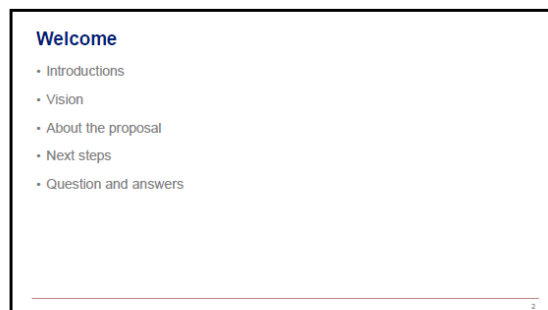
For the latest information on the proposal, visit www.minarahcollege.com.au

Virtual Community Session and Follow-Up Materials

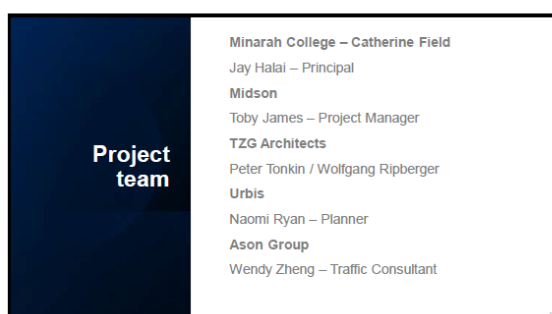
Presentation



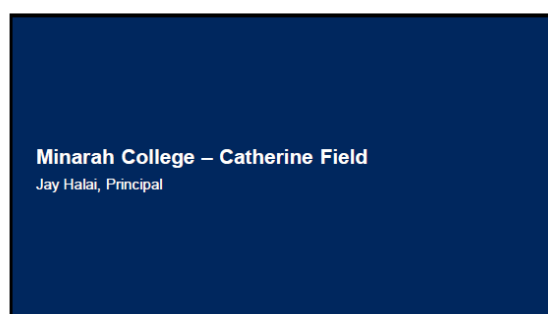
1



2



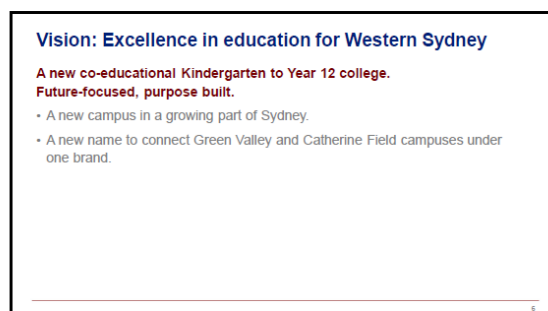
3



4



5



6



7



8



9

A valuable addition to the local neighbourhood

Design principles:

- School buildings to reflect local character
- Native landscaping to complement the semi-rural surrounds and preserve visual amenity for neighbours.
- School buildings to be sited well within boundaries.
- Provisions to share access to new school facilities, like sports fields, with the community.
- Striving for the highest Green Star rating obtainable with the Green Building Council Australia.

10



11

Environmental management

Environmental studies will form part of our State Significant Development application.

- Ecology
- Bushfire
- Flooding and water management
- Noise
- Waste
- Aboriginal heritage

12



Traffic and parking

Steps will be taken to reduce impacts of school traffic.

- All pick-ups and drop-offs by private vehicle and bus will be managed on site.
- Staggered start and finish times for different year groups to spread drop-off and pick-ups.
- Pick-up waiting areas for students will be away from boundaries to minimise noise for neighbours.
- Robust traffic and parking studies will form part of our State Significant Development.

13

13

Construction management

Our approach to construction will involve the least amount of disruption to neighbours.

- A draft Construction and Traffic Management Plan will form part of our State Significant Development application.
- Mitigation measures will include:
 - Management of noise, dust and air quality.
 - Management of construction vehicles.
 - Construction hours.
 - Construction methodology.
 - Channels to contact the project team during construction.
- We will engage with neighbours before works start to minimise impacts as much as possible.

14

14

A comprehensive planning process

This proposal is being assessed as a State Significant Development (SSD)

- The next step involves preparing an SSD application.
- The SSD application will contain specialist studies:
 - Addresses matters such as environment, traffic, noise, operations, and construction.
 - Helps the community, government agencies and the consent authority make informed submissions or decisions on the merits of the project.
- Community engagement is a valued part of the process.

15

15

Next steps

Your comments and questions are most welcome.

- Upcoming question and answer session.
- Feedback form.
 - Email to enquiries@minarahcollege.com.au by 24 November 2021.
- There will be another opportunity to review our application when the Department of Planning, Industry and Environment puts it on public exhibition.
- Stay up-to-date at www.minarahcollege.com.au

16

16

Questions and Answers

Submit your questions or comments

17

Thank you

We appreciate you taking the time to learn about Minarah College – Catherine Field.

18



Follow-up email to registrants – 11 November 2021

Minarah College – Catherine Field community session



Minarah College <enquiries@minarahcollege.c... Thu, Nov 11, 8:25 PM (4 days ago)
to bcc: dwolfe ▾



Hello

Thank you to everyone who joined this evening's online community session about the proposed Minarah College campus at Catherine Field.

We appreciate all your questions and feedback.

An information sheet covering details shared at the session is now available at www.minarahcollege.com.au. Here you can stay up-to-date with the proposal and the planning process.

As a further follow-up to tonight's session, we will prepare a question and answer document that covers all the issues raised and will publish that on the website in the coming weeks. We will email you when that happens.

A feedback form is also available at www.minarahcollege.com.au – if you have additional comments or questions please download and complete the form and return it by 24 November 2021 to enquiries@minarahcollege.com.au. This way your feedback can be considered by the project team as they prepare the State Significant Development application.

Thank you again for taking time out of your evening to join us.

Kind regards

Dominique Wolfe

The Community Engagement Team

Minarah College – Proposed Catherine Field campus

enquiries@minarahcollege.com.au

Community Information Sheet

Community Information

Minarah College – Proposed new Catherine Field school

ABOUT THE PROPOSAL

A new co-educational Kindergarten to Year 12 college is being proposed for the local community, with classrooms and facilities to be future-focused and purpose built to prepare students for jobs of the future.

Minarah College – Catherine Field would accommodate 1,580 students, including an Early Learning Centre, Special Education School, and OOSH care.

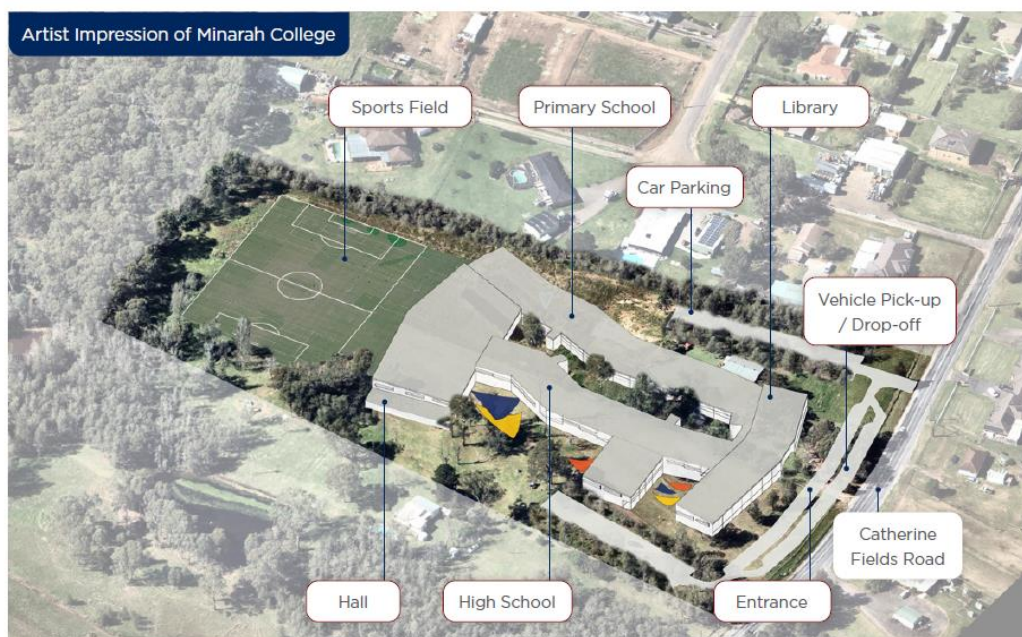
It will be an inclusive school welcoming all students and families from the community, and would be thrilled to have all local students to support diverse and rewarding community connections.

Minarah College will leverage the teaching and learning expertise of Green Valley Islamic College, which topped the 2020 list of best

performing schools in Liverpool based on NAPLAN results – opening as its second campus in this growing region.

New schools are urgently needed in the area, with the NSW Government estimating 77,978 student places are needed by 2036. Minarah College would be proud to meet a small fraction of this demand and would deliver the school in stages, in line with growth in the local community.

The new school represents a \$70 million investment in the local community, to be funded through bank loans. It would create 150 jobs during construction and 140 new full time/part time jobs once opened.

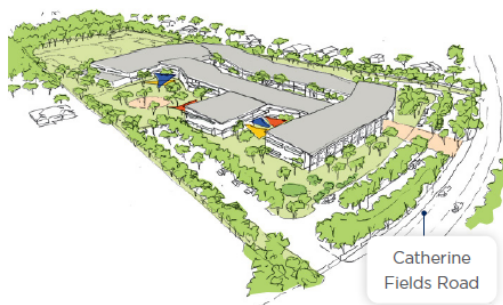




A VALUABLE ADDITION TO THE LOCAL NEIGHBOURHOOD

Minarah College is committed to being a good neighbour. A number of design principles will be applied to ensure the school is a valuable addition to the local neighbourhood:

- School buildings will be designed to reflect local character, and native landscaping will be used to complement the semi-rural surrounds and preserve visual amenity for neighbours.
- School buildings will be sited well within the site boundaries so there will be no overshadowing on neighbouring properties.
- Provisions will be made to share access to new school facilities, such as sports fields, with the local community.
- The project will strive for the highest Green Star rating obtainable with the Green Building Council Australia, ensuring a positive contribution to local sustainability.



Artist impression of Minarah College – Catherine Field

TRAFFIC AND PARKING

We recognise that our new school will generate new traffic movements on Catherine Fields Road and Deepfields Road, and we will do everything we can to reduce impacts for other road users.

All pick-ups and drop-offs by private vehicle and bus will be managed internal to the site. This means that queuing will occur within the school grounds, with minimal impact on surrounding streets. Best practice examples from other Sydney schools will be used to inform the design – some of these run so smoothly you would not know there was a school in the area at all.

There will also be staggered start and finish times for different year groups to spread drop-off and pick-ups.

Pick-up waiting areas for students will be positioned away from site boundaries to minimise noise for neighbours.

Getting traffic and parking right is important to us as we want to be good neighbours. We will undertake robust traffic and parking studies as part of our State Significant Development.

Our design and management plans will need to be able to demonstrate that vehicle movements generated by the school – both during construction and once opened – can be accommodated on the local road network.

ENVIRONMENTAL MANAGEMENT

Environmental studies will be completed as part of our State Significant Development application. These will identify any potential impacts on the environment and outline how those impacts will be mitigated. They will cover biodiversity and protected species, bushfire, flooding and water management, air quality and emissions, noise, waste, heritage, and Aboriginal heritage.

Our site adjoins fairly dense native vegetation to the north and west. We will add native landscaping and vegetation to our site, including at these boundaries, to support a soft visual transition between us and our neighbours, and preserve visual amenity for neighbours and from the streetscape.

To allow for the school buildings, which will be located away from the site boundaries to reduce impacts on neighbours, a number of trees will need to be removed. Each of these trees (and more) will be replaced in key locations around the site to provide shaded play areas for students and maintain privacy for neighbours.

CONSTRUCTION MANAGEMENT

Our approach to construction will involve the least amount of disruption to neighbours.

A draft Construction and Traffic Management Plan will be lodged as part of our State Significant Development application and this will outline mitigation measures that we would use. It will include things such as:

- Management of noise, dust and air quality.
- Management of construction vehicles.
- Construction hours, which would be advised by the Department of Planning, Industry and Environment and Council.
- Construction methodology, such as using some prefabricated structures, which would reduce the amount of activity on site.
- Channels for the community to contact the project team with any concerns during construction to ensure prompt resolution.

Prior to starting construction, we will engage with neighbours to keep them informed and minimise the impact of site activities as much as possible.



Landscape design



A COMPREHENSIVE PLANNING PROCESS

This proposal is being assessed as a State Significant Development. This means a development application will be lodged with the Department of Planning, Industry and Environment. Camden Council is a key stakeholder in the process.

The next step in the planning process involves preparing a State Significant Development (SSD) application to the Department.

The application will contain specialist studies, which are an important part of the planning process and provide information to decision makers about the economic, environmental and social impacts of the project.

The specialist studies consider matters such as traffic, noise, operations, and construction management. They help the community, government agencies and the consent authority to make informed submissions or decisions on the merits of the project.

Community engagement is a valued part of the process and we welcome your comments.

NEXT STEPS

Thank you for taking the time to learn about Minarah College – Catherine Field.

Your comments and questions about our proposal are most welcome. Please submit them by 24 November 2021 to enquiries@minarahcollege.com.au – that way your feedback can be considered as we prepare our State Significant Development application.

There will be another opportunity to review our application when the Department of Planning, Industry and Environment puts it on public exhibition. At this time, there will be more detailed information available to share as the planning and design process would be further progressed.

To stay up-to-date, visit www.minarahcollege.com.au

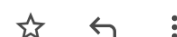


Follow-up email to registrants – 22 November 2021

Minarah College – Catherine Field: Additional information



Minarah College <enquiries@minarahcollege.com.a... Mon, Nov 22, 12:28 PM (3 days ago)
to dwolfe ▾



Hello

A Community Question and Answers document addressing the questions and comments raised at the online community information session on 11 November 2021, along with the presentation shared at that session, is now available at www.minarahcollege.com.au

We are grateful for your questions and insights, and for you to taking the time to learn about the proposed new campus at Catherine Field.

We will email you again when the Department of Planning, Infrastructure and Environment puts our State Significant Development application on public exhibition. At this time, there will be more detailed information available for your review as the planning and design process would be further progressed.

To stay up-to-date, visit www.minarahcollege.com.au

Kind regards

Dominique Wolfe

The Community Engagement Team
Minarah College – Proposed Catherine Field campus
enquiries@minarahcollege.com.au



Community Questions and Answers

Minarah College – Proposed new Catherine Field school

November 2021

An online community information session was held on 11 November 2021 to share information about the proposed new Catherine Field school and invite questions and feedback.

This Questions and Answers document addresses the questions and comments raised by the community at that session. It should be read in conjunction with the Community Information released after the session, which presents the key information shared at the session.

KEY ISSUES	PROJECT RESPONSE
Planning and construction Questions were asked about timing and details around the planning process, construction program and staged opening of the school. Questions were also asked about whether any approvals had been granted to date from Camden Council or other authorities, and the engagement with Camden Council so far.	<ul style="list-style-type: none">• The proposal is being assessed as a State Significant Development by the NSW Government, and it is hoped the process will be completed by the end of 2022, though this will depend on the government's timelines.• The proposal is in the early planning phase and no approvals have been granted to date.• Camden Council is a key stakeholder in the process. The project team has had an initial meeting with Council about the proposal and will continue to liaise with them throughout the planning phase.• If all planning milestones are met, construction of the first stage of the new campus could start in 2024, for opening at the start of the 2025 school year. Student numbers would start small and then grow to 320 students as part of the first stage.• Future stages would be delivered over the next 20 years to align with growth in the local community.• A detailed construction and construction traffic management plan will be submitted with the State Significant Development application. These documents will also need to be approved prior to any works commencing. The project team will engage with neighbours before construction work starts to minimise impacts as much as possible.
Traffic and parking Residents raised questions about the capacity of local roads to accommodate increased traffic and associated safety issues. Concerns were raised about congestion around the site despite internal pick-up/drop-off, that staggered start and finish times would extend periods of impact, and where parents would park for school functions. There were some questions around who would fund an upgrade of Catherine Fields Road, and whether that would fall to rate payers.	<ul style="list-style-type: none">• Robust traffic and parking studies will be undertaken as part of the State Significant Development application and will need to demonstrate that vehicle movements generated by the school – both during construction and once opened – can be accommodated on the local road network.• Staggered start and finish times will slightly extend traffic movements around the site with a view to mitigating other impacts such as congestion and noise, however, these times would not deviate too far from standard school hours. During these periods there will be increased traffic movements around the school, but peaks will dissipate relatively quickly.• The project team has had initial discussions with Transport for NSW and preliminary discussions with Camden Council around traffic and these will continue.• Some form of upgrade to Catherine Fields Road in front of the school site is likely to be a planning requirement to accommodate vehicle movements into the College. Any upgrades or widening required to support the school's operations, such as improvements directly in front of the school, would be a responsibility of the school and not rate payers.• Catherine Fields Road has a 80km speed limit in front of the school, which drops to 60km just to the south. This matter would need to be given further consideration by Camden

	<p>Council as it is a local road, and there may be a requirement for the introduction of a school zone for reduced speed during specified hours.</p> <ul style="list-style-type: none"> Traffic impacts will be reduced through the provision of private chartered buses for students, and the project team is also in discussion with Transport for NSW about providing additional public transport in the area. Parking arrangements for school events will be considered as part of an operational management plan that will form part of the State Significant Development application. It is expected that events will need to be managed to ensure parking is limited to the school site given there are no parking provisions on surrounding roads.
<p>Operations</p> <p>Questions were asked about the school's hours of operations, including OOSH care, and whether use by the community of sports facilities would entail weekend sport on site, with some suggesting that this would be more impactful than beneficial for the majority of near neighbours. Questions were also asked about the number of staff on site. A question was asked about whether it will be an Islamic school, and if the school needs to be welcoming of students from all faiths, or no faith, to be eligible for government funding.</p>	<ul style="list-style-type: none"> School and OOSH care hours will be typical of other public and independent schools. Details around how sports facilities could be shared with the community will form part of the part of the State Significant Development application, taking into consideration community feedback. Staff numbers will start small and then build to 32 staff on completion of the first stage of the College. They will then continue to gradually increase to 140 staff as the College grows over the next 20 years. The College will have an ethos that follows the principles of the religion of Islam, and it will be open to all students to enable diverse and rewarding community connections. The College's welcoming approach is irrespective of its funding. The Catherine Field campus would be funded through bank loans.
<p>Buildings and Design</p> <p>Questions were asked about fencing to maintain privacy for neighbours, and plans for any other buildings on the site.</p>	<ul style="list-style-type: none"> A range of privacy measures will be considered to maintain privacy for neighbours, such as privacy screens, louvres and decorative mesh for windows on the upper floor of school buildings, and landscaping for screening along the boundaries. There will also be a generous setback from school buildings to neighbouring properties, landscaping and fencing to provide separation. No other buildings are currently being considered for the site.
<p>Environment</p> <p>A concern was raised about the cumulative impact on the environment and animal habitats from developments in the area.</p>	<ul style="list-style-type: none"> Environmental studies will be completed as part of the State Significant Development application, and these will identify any potential impacts on the environment and outline how those impacts will be mitigated. This will include a detailed ecology study. Stormwater and overland flow will be managed so as not to cause any negative impact on neighbouring properties.
<p>Strategic context and infrastructure</p> <p>Questions were asked around whether the proposed school would affect plans for rezoning surrounding land for increased residential density. A question was raised about how Catherine Field's current septic system would accommodate the school.</p>	<ul style="list-style-type: none"> The proposed school will not have an impact on any potential rezoning in the area by the NSW Government or Camden Council. However, the location is part of the South West Growth Area and there have been recent rezonings nearby in precincts like Oran Park and Leppington. Access to sewer carriers is a key consideration in the staged opening of the school. The project team has had initial discussions with Sydney Water around the provision of sewerage services, and in the interim, the size of the school will not exceed that which can be supported by a waste water system that is independent of mains sewerage.



Feedback form

Minarah College – New Catherine Field campus

Proposed Kindergarten to Year 12 co-educational independent school for 1,580 students, with an Early Learning Centre, Special Education School and OOSH care.

FEEDBACK FORM

We are preparing our application to the NSW Department of Planning, Industry and Environment for our proposed new school.

Do you have any overall feedback on the proposal?

Do you have any points for the architect and urban designer to consider as they develop the plans and design for the school?

Do you have any points for the landscape architect and urban designer to consider as they prepare the plans for landscaping and vegetation around the school?

Do you have any other comments for the project team?

Continued on page 2...



ABOUT THE ONLINE COMMUNITY SESSION

Thinking about today's online community session, please rate how much you agree with the following:

	Strongly agree	Agree	Neutral	Disagree	Strongly disagree
The project team was helpful and knowledgeable					
I trust community feedback will be accurately reported					
I believe that community feedback will be meaningfully considered					
I feel more informed about the proposal after attending today's online community session					

Please return your feedback by Wednesday 24 November 2021

- Email to enquiries@minarahcollege.com.au

Name

Address

Email

Telephone

☐ Please tick here if you would like to receive updates on this proposal.

Your privacy is important to us. Personal information, such as your image or email address will not be shared with people or organisations without your permission unless we are required to do so by law. Where you have consented to receiving direct marketing communications, such as project updates, from us, your consent will remain current until you advise us otherwise.



Sydney

Level 34, 259 George Street, Sydney NSW 2000

T +61 (0)2 9234 3888

Melbourne

Level 27, 101 Collins Street, Melbourne VIC 3000

T +61 (0)3 9221 6136

Canberra

Level 1, The Realm, 18 National Circuit, Barton, ACT 2600

T +61 (0)2 6198 3417

www.apa.net.au