

GENERAL ARRANGEMENT  
(1 : 200)

EQUIPMENT SCHEDULE

EQUIP No.	DESCRIPTION	EQUIP No.	DESCRIPTION	EQUIP No.	DESCRIPTION	EQUIP No.	DESCRIPTION	EQUIP No.	DESCRIPTION
C1 - C2	CHAIN CONV. RAW MATERIAL	GBS2	GLASS BREAKING SCREEN	MP3B	BELT CONV. MIXED PAPER SORTING	ECS1	EDDY CURRENT SEPARATOR	ECS2	EDDY CURRENT SEPARATOR
PS1	PRIMARY SORTING STATION	BNC1	BOUNCE CONVEYOR SEPARATOR	BC1	BUNKER CONVEYOR - DRY WASTE	PERF1	PERFORATOR - CONTAINER	DCS	DUST COLLECTION SYSTEM
C3	BELT CONV. RAW MATERIAL SORTING	BNC2	BOUNCE CONVEYOR SEPARATOR	BC2	BUNKER CONVEYOR - MIXED PAPER	PERF2	PERFORATOR - CONTAINER	GS1	GLASS SILO -CRUSHED GLASS
PS1	PRIMARY SORTING STATION - LARGE	BAL1	BALLISTIC SCREEN SEPARATOR	BFC1	CHAIN CONV. BAILER FEED	OPT7	OPTICAL SEPARATOR PLASTIC TYPES	GWB1	GLASS WASTE BIN
PSCR1	PRIMARY SORTING SCREEN, VIBRATING	BAL2	BALLISTIC SCREEN SEPARATOR	BAILER 1	BAILER - MIXED PAPER / DRY WASTE	OPT8	OPTICAL SEPARATOR PLASTIC TYPES	BMB	BULK METAL BIN
OCCSC1	OVER SIZE CARDBOARD, DISC SCREEN	OPT1	OPTICAL SEPARATOR MIXED PRODUCT	OPT5	OPTICAL SEPARATOR CONTAINER	BS1	BULK STORAGE BINS		
OCC2	BELT CONV. OCC SORTING	OPT2	OPTICAL SEPARATOR MIXED PRODUCT	OHM1	MAGNET - FERROUS /NON FERROUS	OPT9	OPTICAL SEPARATOR CONTAINERS		
GBS1	GLASS BREAKING SCREEN	OPT3	OPTICAL SEPARATOR MIXED PRODUCT	PERF3	PERFORATOR - CONTAINER	CB1	CONTAINER BAILER		
PS2	PRIMARY SORTING STATION	OPT4	OPTICAL SEPARATOR MIXED PRODUCT	AS1	AIR SEPARATOR - HEAVY/LIGHT	OHM2	MAGNET - FERROUS /NON FERROUS		
WW1	WET WASTE BIN	MP3A	BELT CONV. MIXED PAPER SORTING	OPT6	OPTICAL SEPARATOR PLASTIC	TR1	TROMMEL GLASS SIZE SEPARATOR		

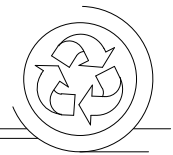
LEGEND:

OCC	OCC UNDERS
GLASS	METALS
MIXED PAPER	BULKY PLASTIC
FRC FIBRE RECOVERY	LPR LIQUID HEAVY
CL CONTAINERS / PRODUCT RETURN	CRC CONTAINER RETURN
DRY WASTE	WET WASTE
RAW MATERIAL RECEIVABLE	
SEPARATED MATERIAL DISPATCH	

GENERAL NOTES:

- \* ALL DIMENSIONS ARE IN MILLIMETRES U.N.O.
- \* ALL WORKMANSHIP & MATERIALS TO BE IN ACCORDANCE WITH AS4100.
- \* UNLESS NOTED OTHERWISE ALL STEEL SHALL BE IN ACCORDANCE WITH:
  - AS3678 GRADE 250 FOR ALL PLATE
  - GRADE BHP-300PLUS FOR STRUCTURAL SECTIONS
  - AS1163 GRADE C350 FOR RHS SECTIONS
  - AS1163 GRADE C350 FOR CHS SECTIONS - Ø% & GRADE C250 - Ø%
  - OTHER STANDARDS LISTED IN THE SPECIFICATION
- \* ALL HOLES TO BE Ø22 mm U.N.O.
- \* ALL NOTCHES IN MEMBERS TO HAVE 11mm RADIUS IN CORNERS.
- \* ALL WELDING & WELD PREPARATION TO BE TO AS/NZS 1554.1:2004
- \* ALL JOINTS TO BE FULLY WELDED USING 6mm CONTINUOUS FILLET WELDS U.N.O.
- \* ALL WELDING TO BE CATEGORY S.P. U.N.O.
- \* ALL BUTT WELDING TO BE FULL PENETRATION U.N.O.
- \* WELDING SYMBOLS SHOWN ARE TO AS/NZS 1101.3:2005
- \* FLAME CUT SURFACES TO BE UNIFORM & CLEAN BEFORE WELDING.
- \* ALL DIMENSIONS GIVEN FOR MATERIAL ARE GROSS DIMENSIONS WITH NO REDUCTION FOR WELD PREPARATION.
- \* SURFACE TREATMENT TO BE AS PER SPECIFICATION
- \* ITEM MARKS ARE TO BE PREFIXED BY DRAWING No. FOR IDENTIFICATION

RESOURCE  
RECOVERY  
DESIGN (AUST) PTY LTD.



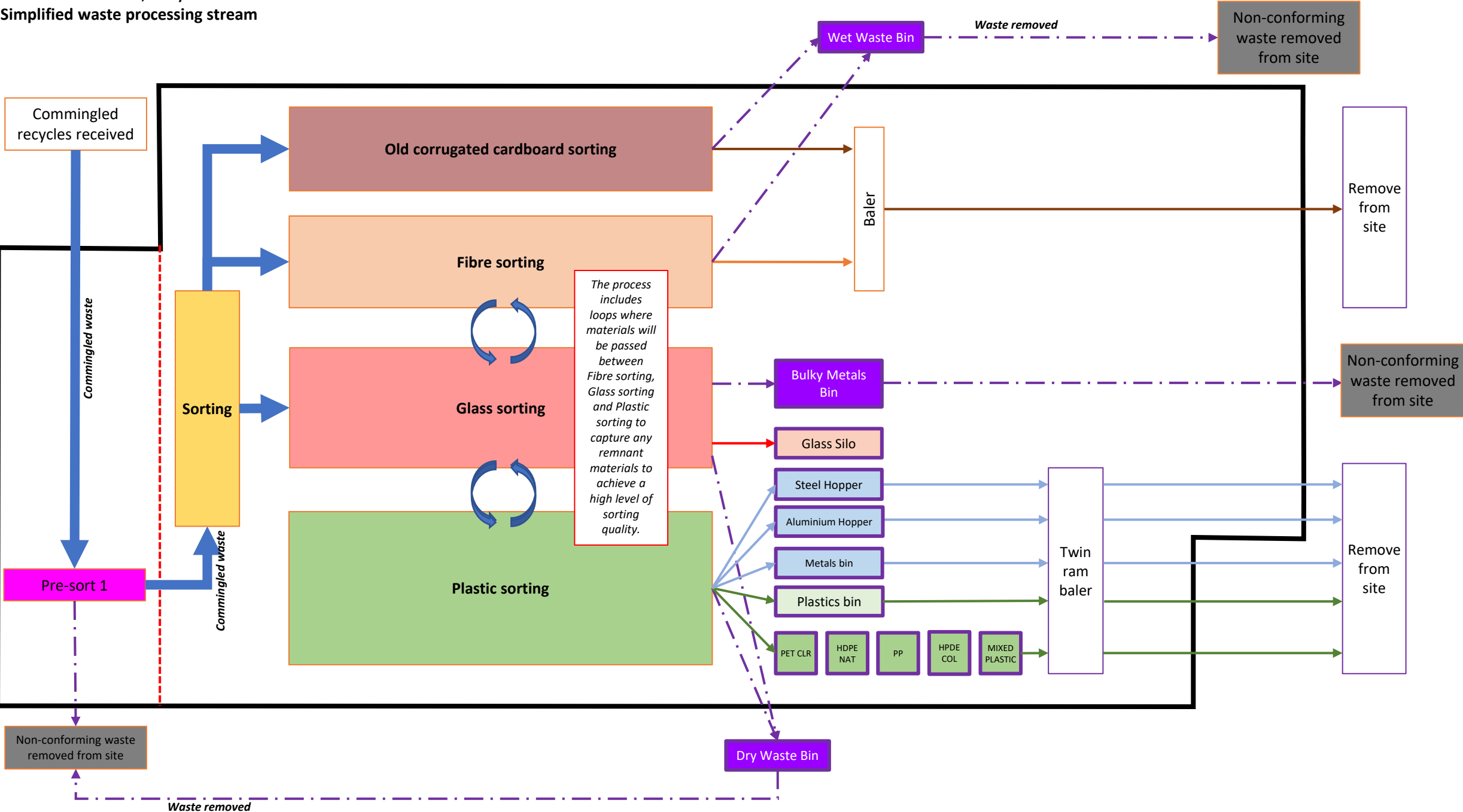
CLIENT  
**CLEANAWAY**  
PROJECT  
**BLACKTOWN MRF**  
**PLANT DESIGN & INSTALLATION**  
Woodstock Ave, Blacktown, NSW  
DO NOT SCALE - IF IN DOUBT ASK

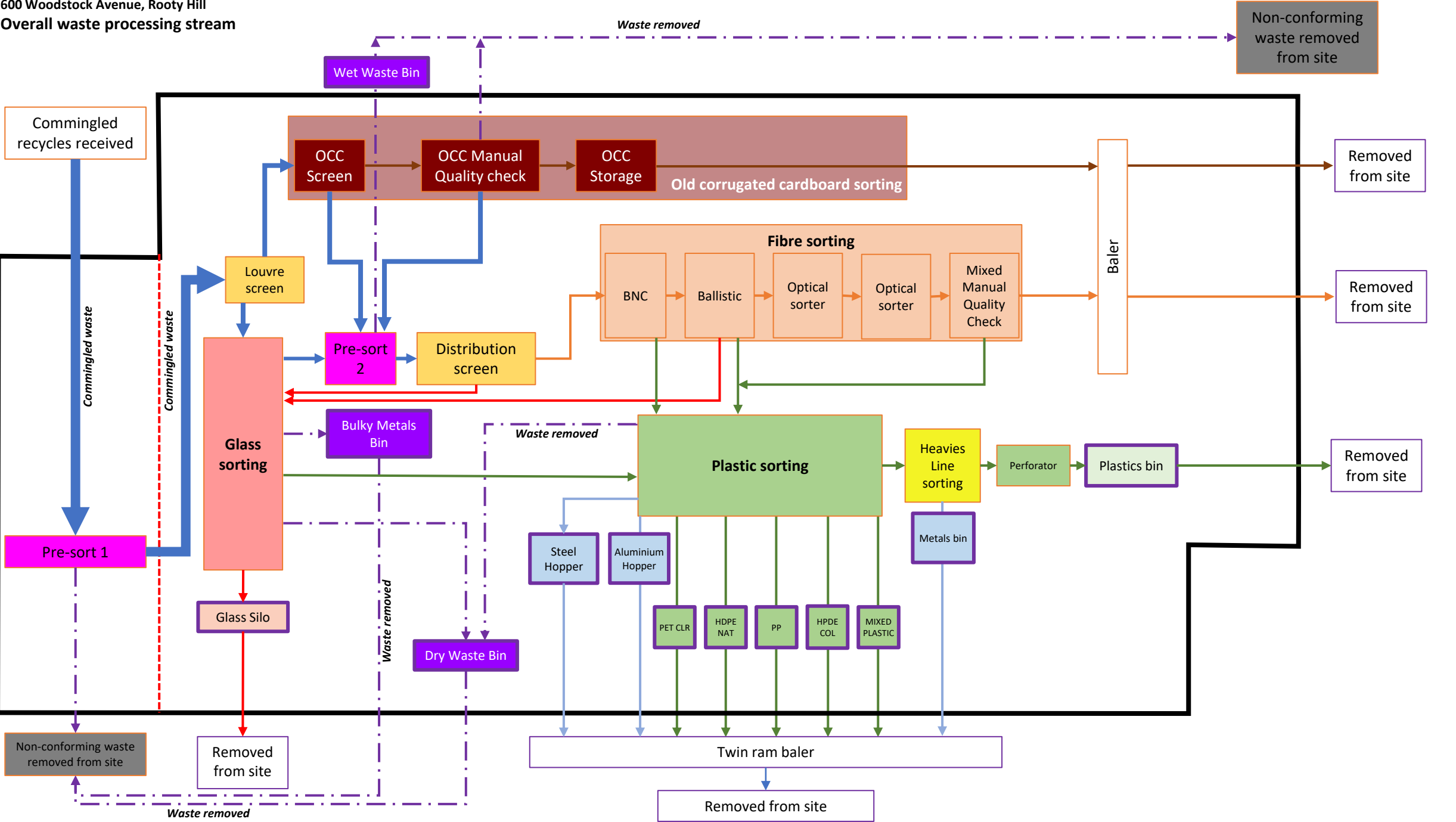
DETAILED  
JAL  
DATE  
27/05/2021  
MODELLER  
DATE  
SHEET SIZE  
A1  
SCALE  
1:300  
1 OF 1

DRAWING TITLE  
**BLACKTOWN MRF**  
**GENERAL ARRANGEMENT**  
**PLAN - (PRESENTATION)**

RRD Drawing No:  
**10840-MRF-001**  
PROJECT JOB NO  
EQUIPMENT  
MARK NO  
REV NO  
**L**

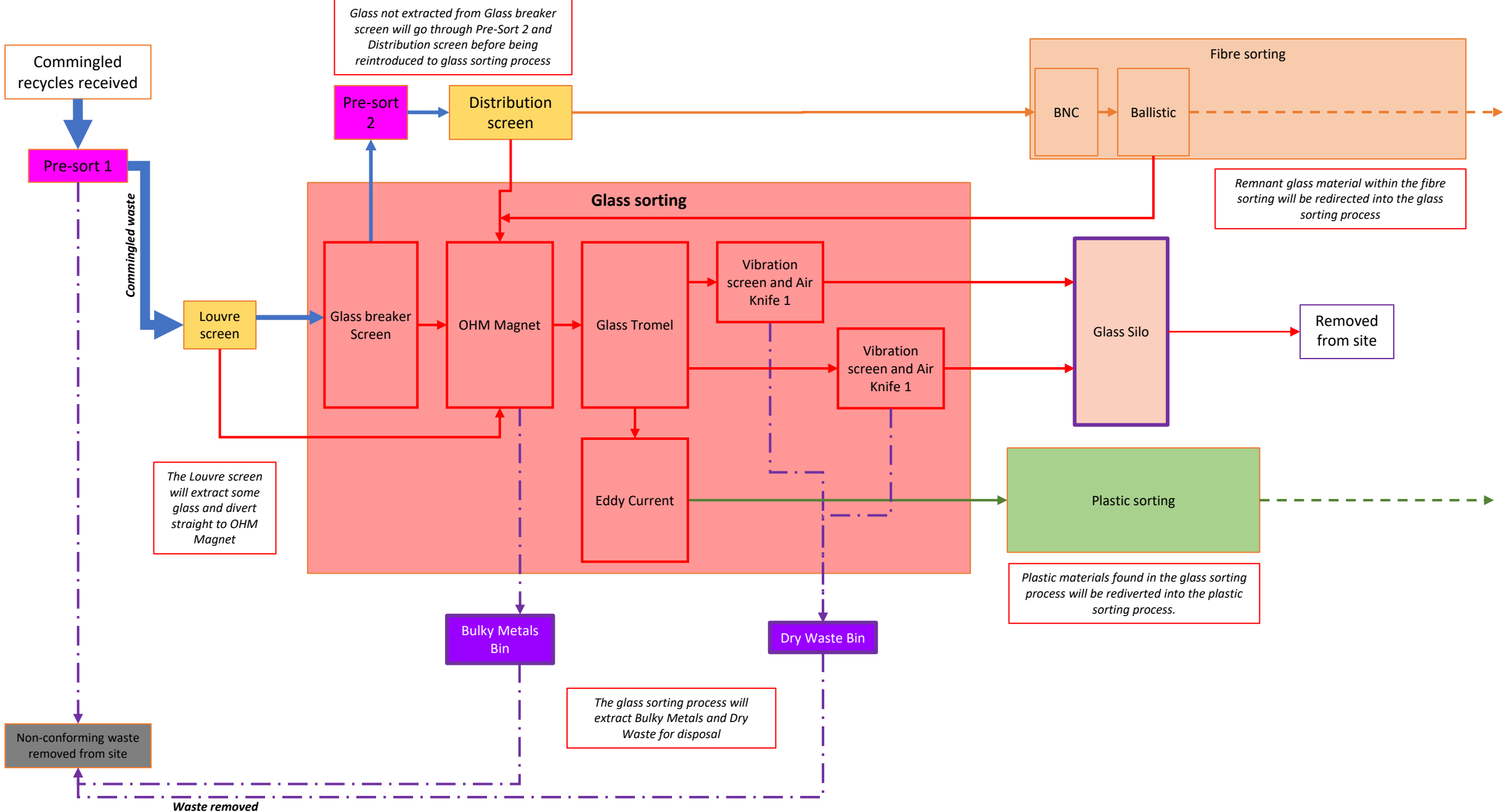






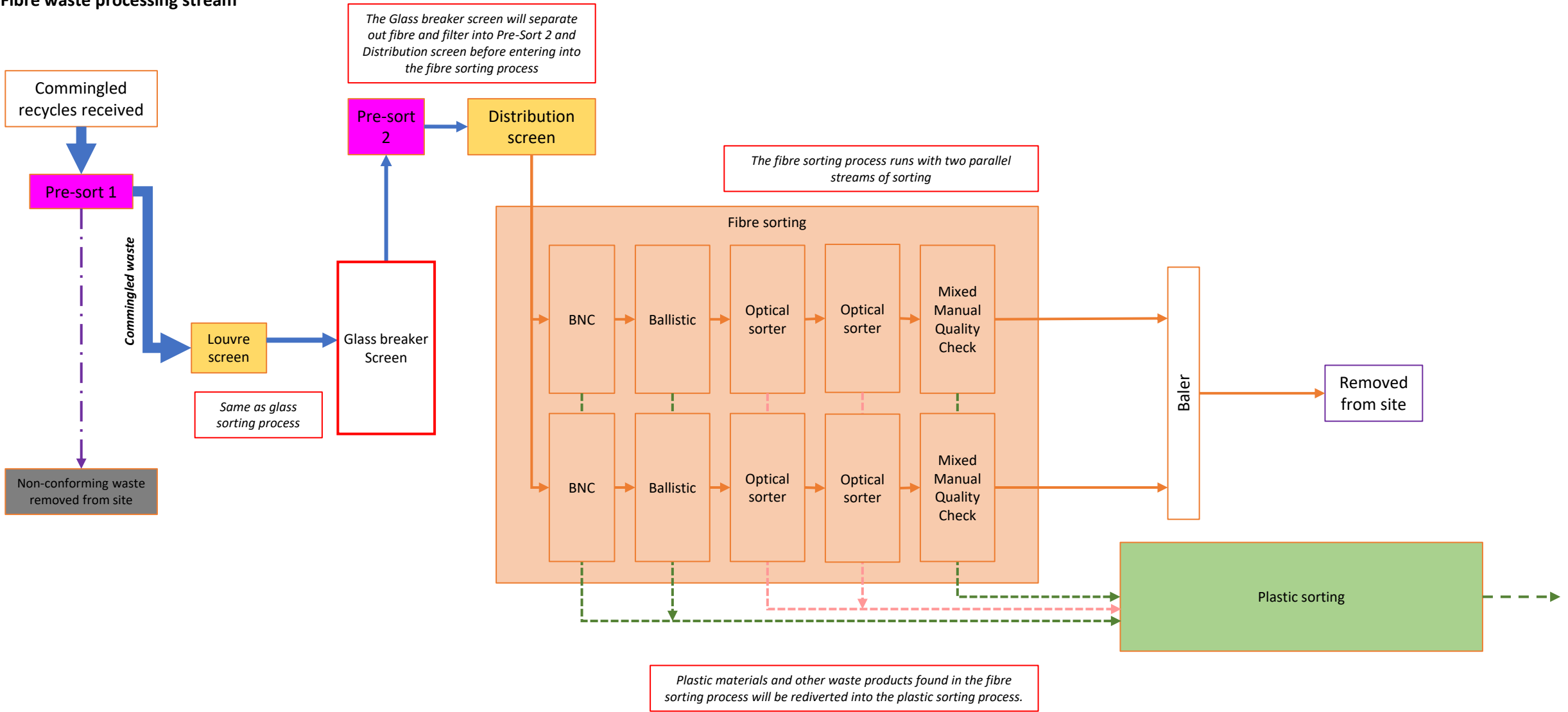


600 Woodstock Avenue, Rooty Hill  
Glass waste processing stream



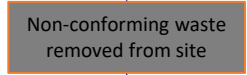


600 Woodstock Avenue, Rooty Hill  
Fibre waste processing stream





Commingled  
recycles received



*Fibre materials found in the plastic sorting process will be rediverted into the fibre sorting process.*