



APPENDIX



Site access – road upgrade corridor concept design

C.1 Concept plan of road upgrade corridor

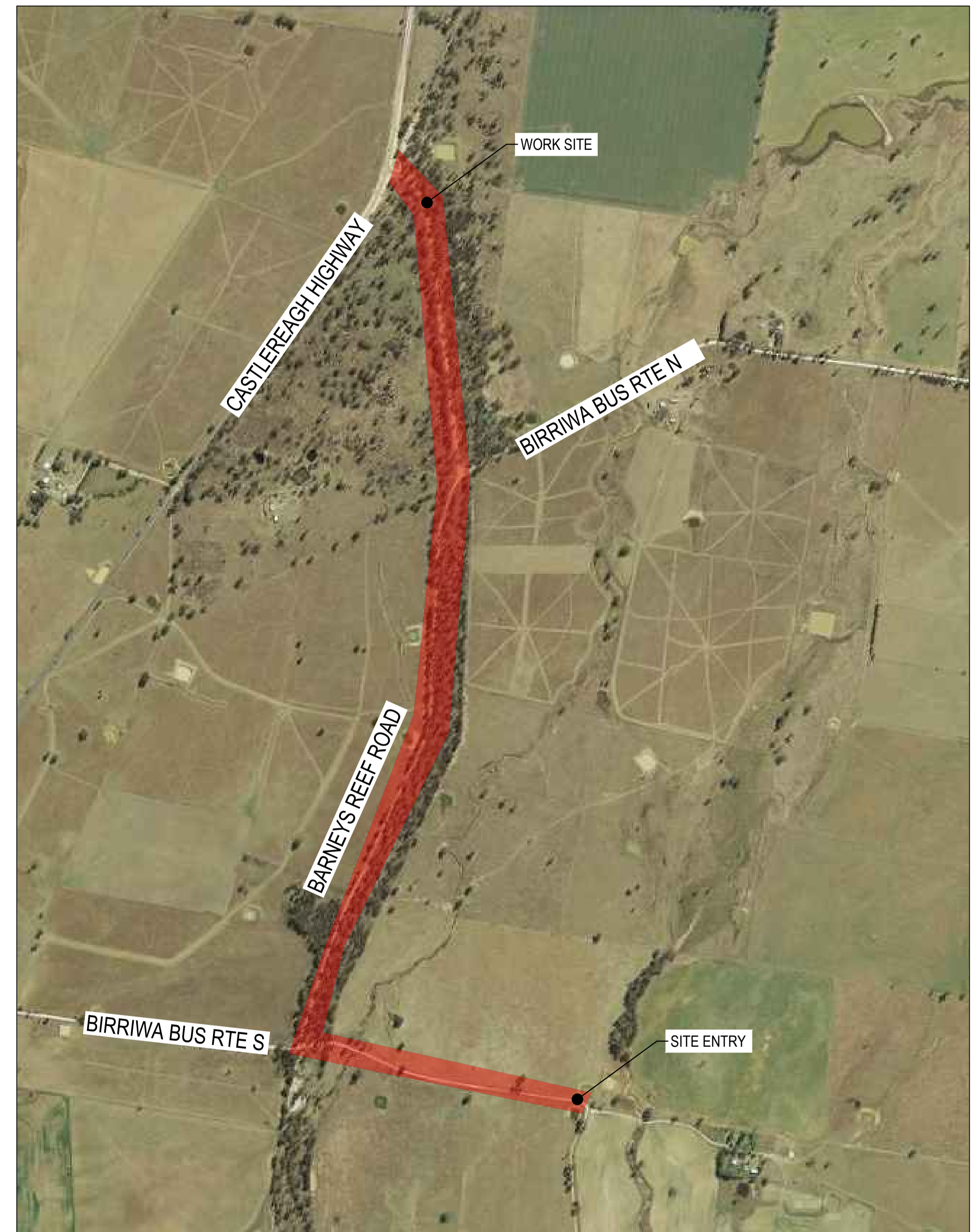
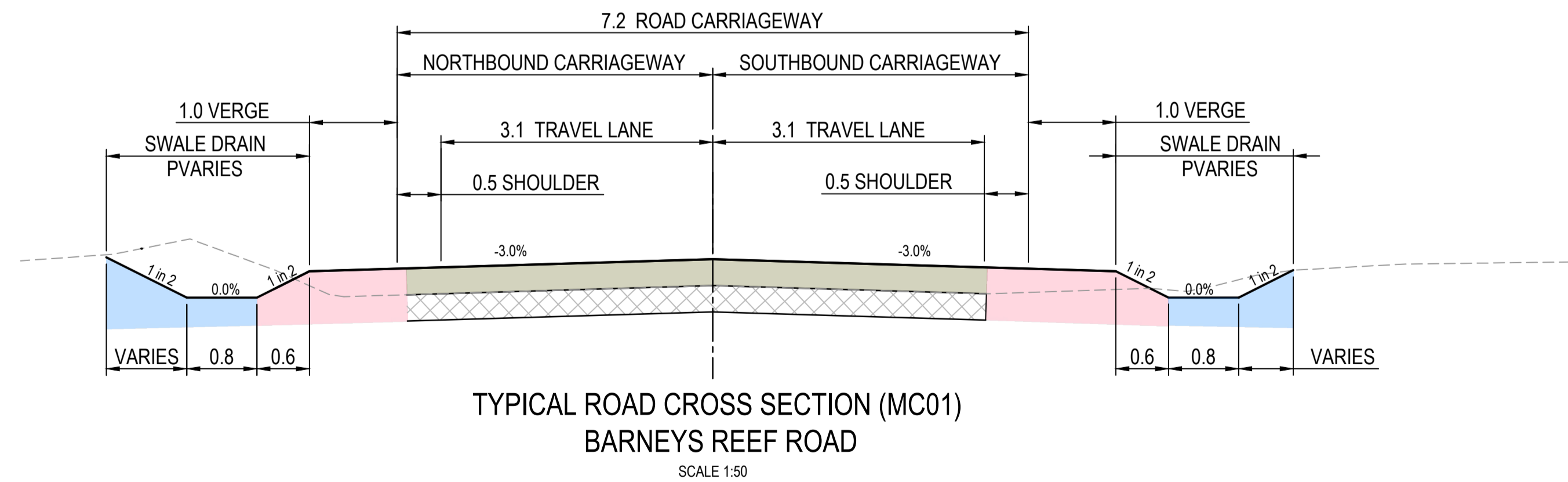
UPC/AC RENEWABLES AUSTRALIA

BARNEYS REEF ROAD UPGRADE

CONCEPT DESIGN

DWG No.	DESCRIPTION	REV
C1.001	COVER SHEET AND DRAWING INDEX	P1
C1.002	GENERAL ARRANGMENT PLAN - SHEET 1 - MC01	P1
C1.003	GENERAL ARRANGMENT PLAN - SHEET 2 - MC01	P1
C1.004	GENERAL ARRANGMENT PLAN - SHEET 3 - MC01	P1
C1.005	GENERAL ARRANGMENT PLAN - SHEET 4 - MC01	P1
C1.006	GENERAL ARRANGMENT PLAN - SHEET 5 - MC02	P1
C1.007	GENERAL ARRANGMENT PLAN - SHEET 6 - MC02	P1

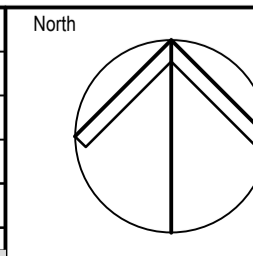
LEGEND	
	ROAD CONTROL LINE
	DESIGN ROADWAY
	EXISTING SURVEY
	EXISTING TREE
	EXISTING UNSEALED GRAVEL ROAD
	ROAD / DRIVEWAY CONTROL LABEL
	DESIGN CONTOURS - MAJOR
	DESIGN CONTOURS - MINOR
	EXISTING CONTOURS
	NEW STORMWATER PIPE AND HEADWALL



© COPYRIGHT of this design and plan is the property of ACOR Consultants Pty Ltd. ACN 079 306 246 ABN 40 079 306 246, all rights reserved. It must not be used, modified, reproduced or copied wholly or in part without written permission from ACOR Consultants Pty Ltd.

This drawing has been assigned an electronic code that signifies the drawing has been checked and approved by:

Issue	Description	Date	Drawn	Approved
P1	PRELIMINARY ISSUE FOR DISCUSSION	13.04.22	UF	CG



Client
UPC/AC RENEWABLES AUSTRALIA
Suite 2, Level 2, Castray Esplanade
Battery Point, TAS, 7004

UPC/AC Renewables AUSTRALIA



ENGINEERS | MANAGERS | INFRASTRUCTURE PLANNERS | DEVELOPMENT CONSULTANTS

ACOR Consultants Pty Ltd
Unit 10, Level 1, No.1 Maitland Place
Baulkham Hills NSW 2153
T +61 2 9634 6311

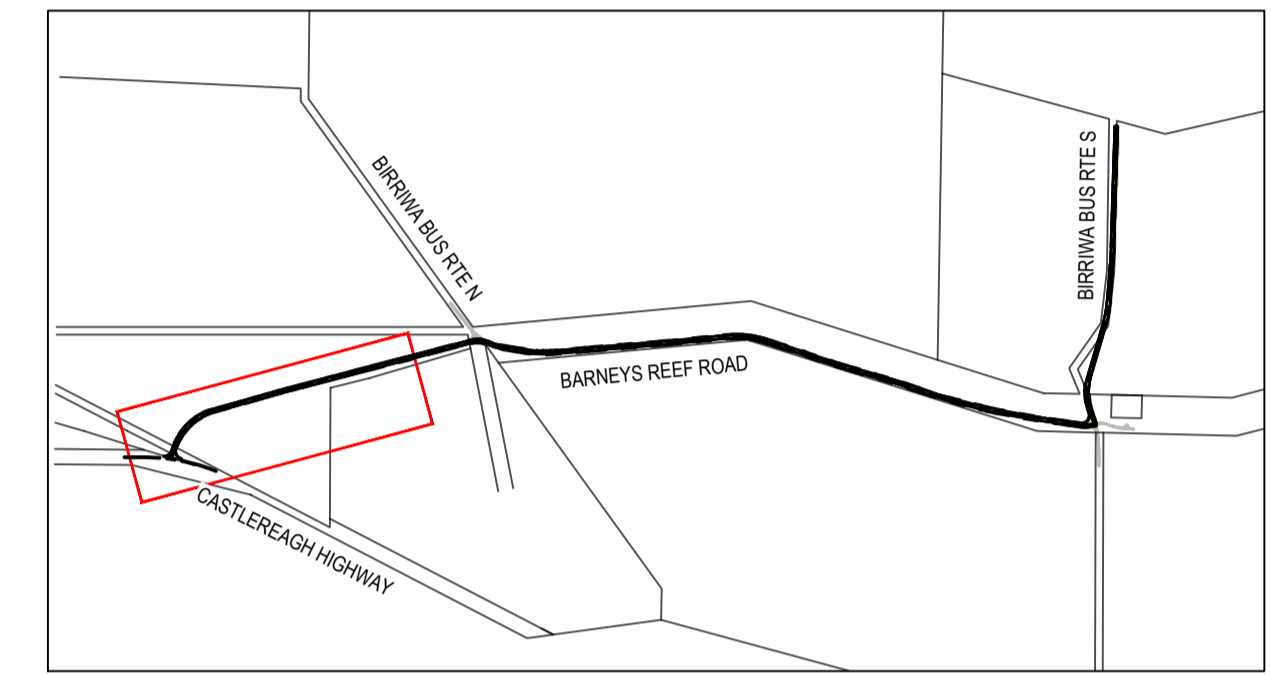
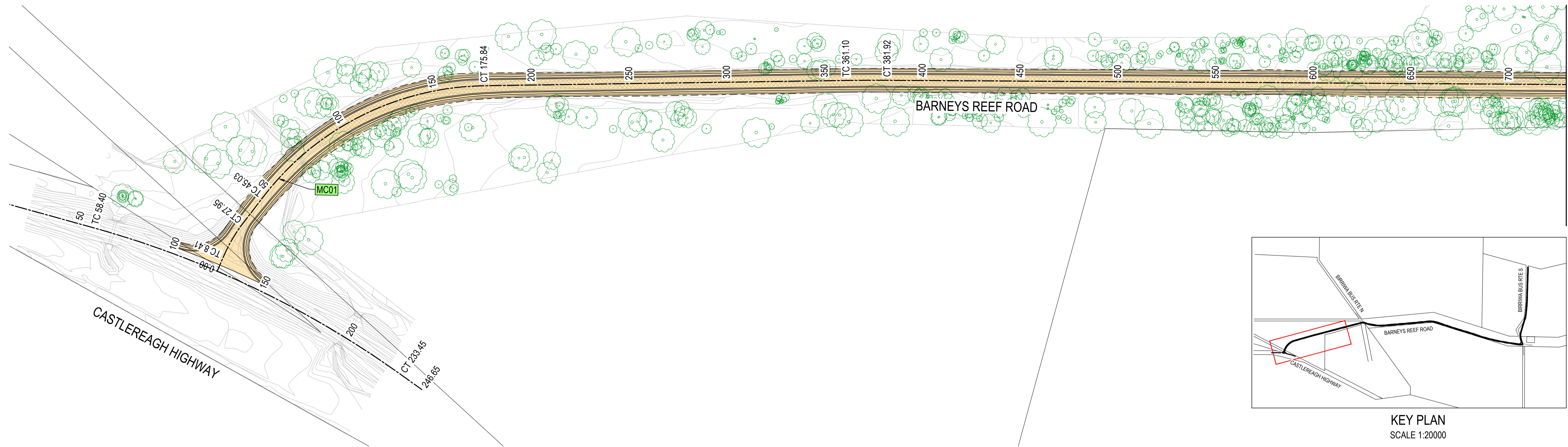


Project
BARNEYS REEF ROAD UPGRADE
SOLAR FARM ACCESS
BIRRIWA

Drawing Title
COVER SHEET AND DRAWING INDEX

Drawn	Date	Scale	A1	G.A. Check	Date
UF	Apr-22	AS SHOWN			
Designed	Project No.	Dwg. No.	Issue		
VG	NSW220659	C1.001	P1		

NOT FOR CONSTRUCTION

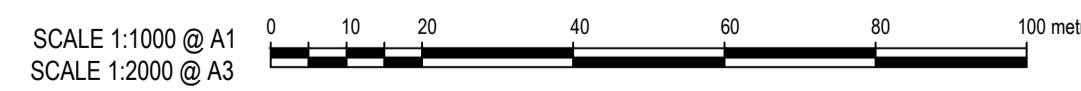


KEY PLAN
SCALE 1:20000

CHAINAGE	EXISTING LEVELS	DESIGN LEVELS	CUT / FILL DEPTH	HORIZONTAL GEOMETRY	VERTICAL GEOMETRY
0	420.16	420.16	0.00	L = 8.41	G = 5.11%
3.4	420.34	420.34	0.00	R = 80	G = 2.65%
7.55	420.45	420.45	0.00	L = 17.09	G = -4.15%
8.41	420.43	420.41	-0.01	R = 145	K = 15.46
14.38	420.16	420.17	-0.01		L = 80
27.95	419.68	419.66	-0.02		G = 1.02%
45.03	419.20	419.20	-0.00		
50	419.09	419.10	0.01		
94.38	418.97	418.92	-0.05		
100	419.00	418.97	-0.03		
150	419.45	419.49	0.03		
175.84	419.75	419.75	0.00		
200	419.95	420.00	0.05		
211.66	420.05	420.12	0.07		
250	420.28	420.28	-0.01	L = 185.26	G = 0.41%
300	420.53	420.48	-0.04		
342.94	420.64	420.66	0.02		
350	420.68	420.69	0.01		
361.1	420.72	420.72	-0.00	R = 1000	K = 97.85
381.92	420.70	420.74	0.04		L = 100
400	420.67	420.73	0.06		
442.94	420.51	420.56	0.05		
450	420.51	420.52	0.01		
500	420.24	420.22	-0.02	L = 499.21	G = -0.61%
550	419.91	419.91	0.00		
557.83	419.89	419.86	-0.03		
584.65	420.08	420.08	0.00		
600	420.00	420.00	-0.00		
622.39	419.90	419.88	-0.02		
650	419.92	419.89	-0.03		
658.34	419.92	419.90	-0.02		
700	420.15	420.12	-0.03		

BARNEYS REEF ROAD - MC01

A1 Horizontal Scale 1 : 1000
A1 Vertical Scale 1 : 200



© COPYRIGHT of this design and plan is the property of ACOR Consultants Pty Ltd. ACN 079 306 246 ABN 40 079 306 246, all rights reserved. It must not be used, modified, reproduced or copied wholly or in part without written permission from ACOR Consultants Pty Ltd.

This drawing has been assigned an electronic code that signifies the drawing has been checked and approved by:			
P1	PRELIMINARY ISSUE FOR DISCUSSION	13.04.22	UF CG
Issue	Description	Date	Drawn Approved

Client
UPCIAC RENEWABLES AUSTRALIA
Suite 2, Level 2, Castray Esplanade
Battery Point, TAS, 7004

ACOR CONSULTANTS
ENGINEERS | MANAGERS | INFRASTRUCTURE PLANNERS | DEVELOPMENT CONSULTANTS

ACOR Consultants Pty Ltd
Unit 10, Level 1, No.1 Maitland Place
Baulkham Hills NSW 2153
T +61 2 9634 6311

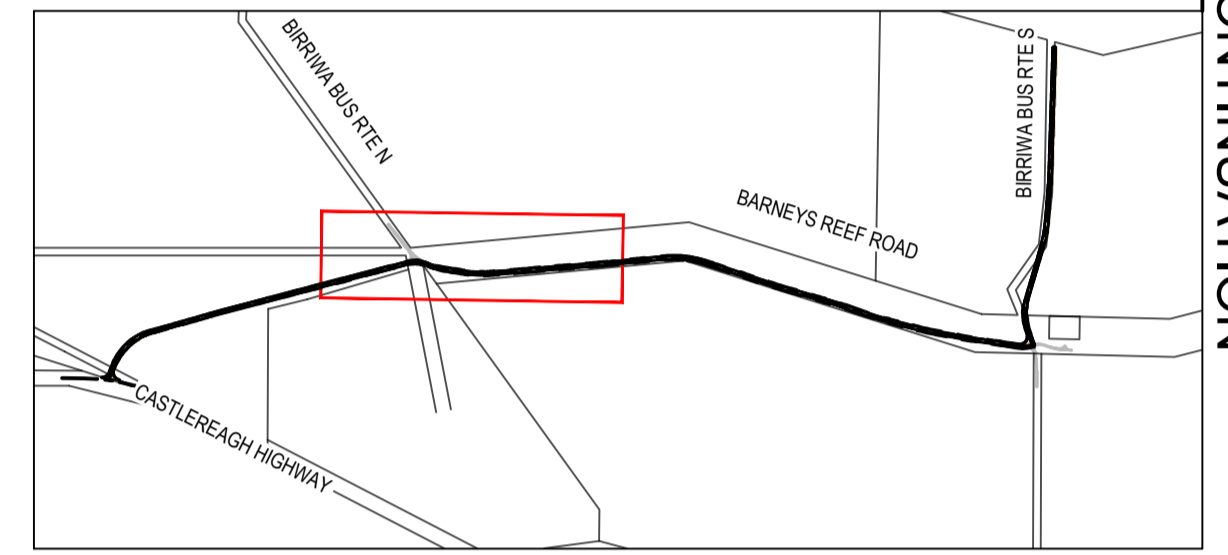
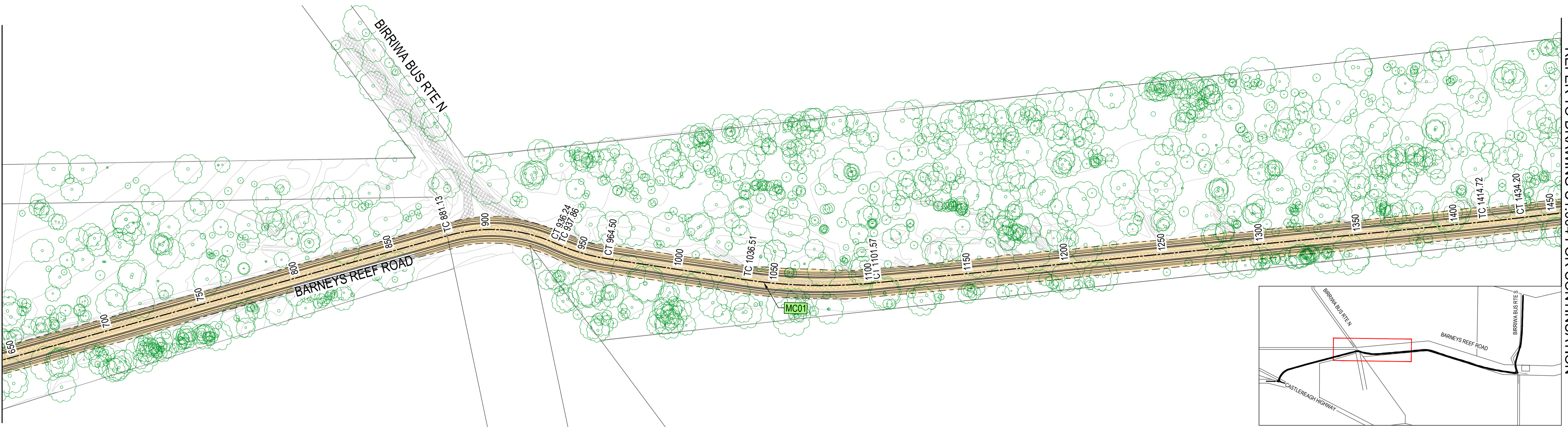
Project
BARNEYS REEF ROAD UPGRADE SOLAR FARM ACCESS
BIRRIWA

Drawing Title GENERAL ARRANGMENT PLAN SHEET 1 MC01			
Drawn	Date	Scale	A1
UF	Apr-22	1:500	
Designed	Project No.	Dwg. No.	Issue
VG	NSW220659	C1.002	P1

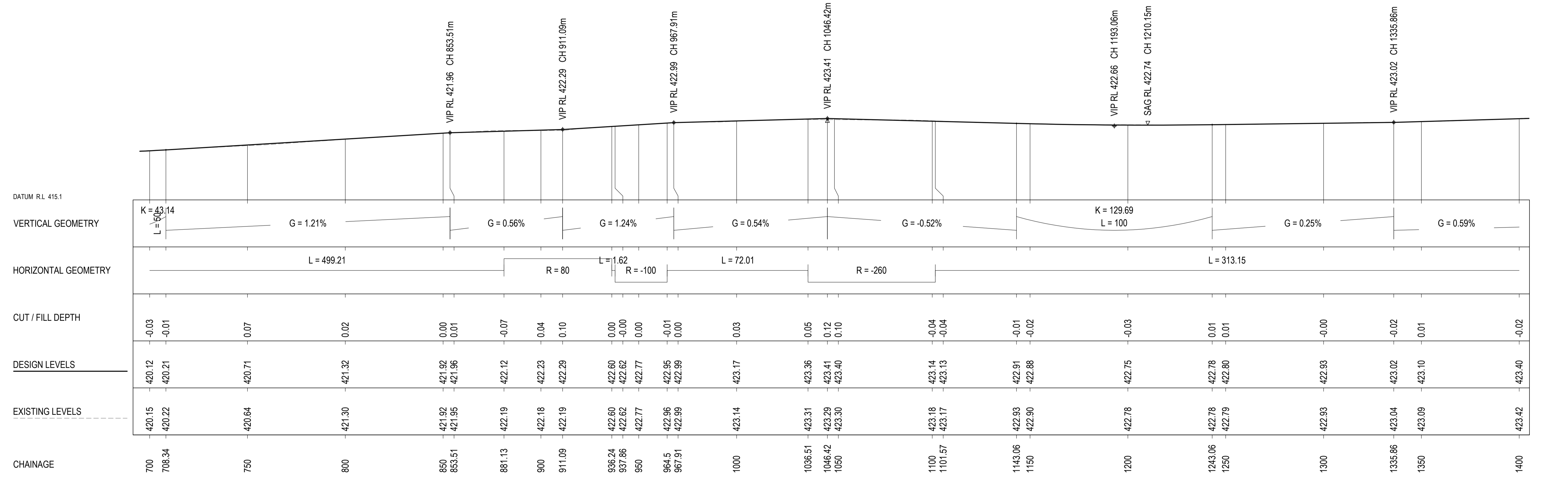
NOT FOR CONSTRUCTION

REFER TO DRAWING C1.002 FOR CONTINUATION

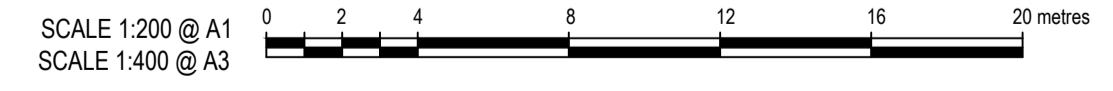
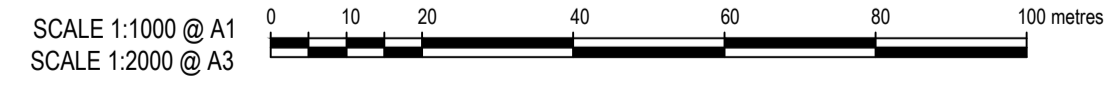
REFER TO DRAWING C1.004 FOR CONTINUATION



KEY PLAN
SCALE 1:20000

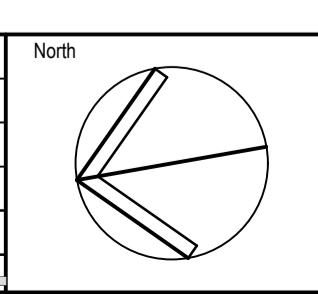


BARNEYS REEF ROAD - MC01
A1 Horizontal Scale 1 : 1000
A1 Vertical scale 1 : 200

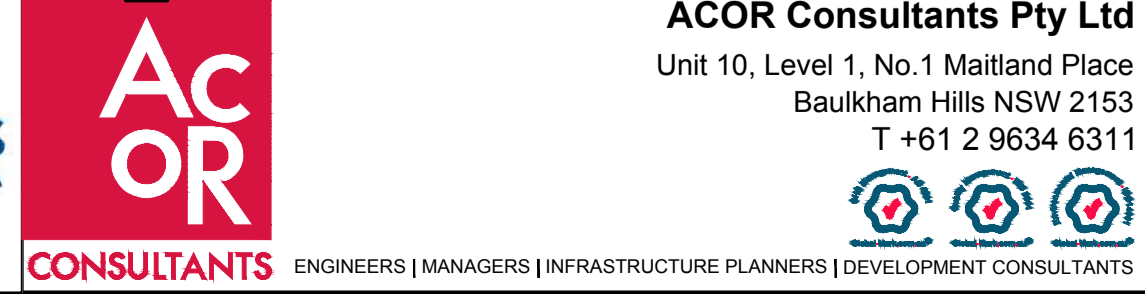


© COPYRIGHT of this design and plan is the property of ACOR Consultants Pty Ltd. ACN 079 306 246 ABN 40 079 306 246, all rights reserved. It must not be used, modified, reproduced or copied wholly or in part without written permission from ACOR Consultants Pty Ltd.

This drawing has been assigned an electronic code that signifies the drawing has been checked and approved by:				
P1	PRELIMINARY ISSUE FOR DISCUSSION	13.04.22	UF	CG
Issue	Description	Date	Drawn	Approved



Client
UPCIAC RENEWABLES AUSTRALIA
Suite 2, Level 2, Castry Esplanade
Battery Point, TAS, 7004



ACOR Consultants Pty Ltd
Unit 10, Level 1, No.1 Maitland Place
Baulkham Hills NSW 2153
T +61 2 9634 6311

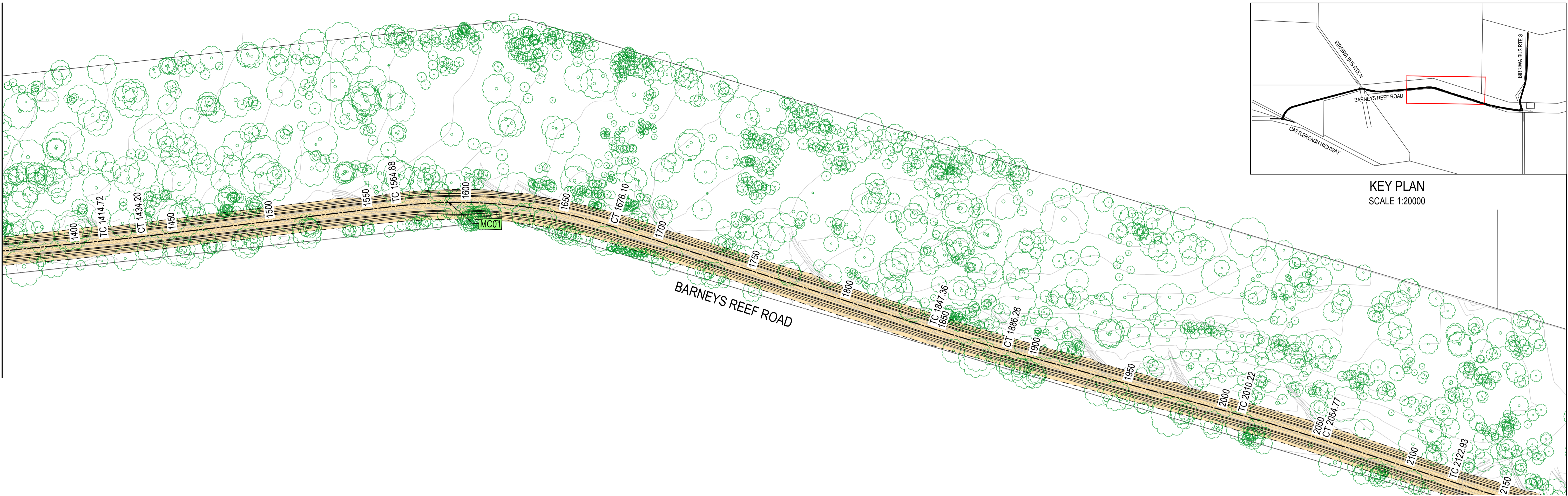
Project
BARNEYS REEF ROAD UPGRADE SOLAR FARM ACCESS
BIRRIWA

Drawing Title GENERAL ARRANGMENT PLAN SHEET 2 MC01				
Drawn	Date	Scale	A1	G.A. Check
UF	Apr-22	1:1000		
Designed	Project No.	Dwg. No.	Issue	
VG	NSW220659	C1.003	P1	

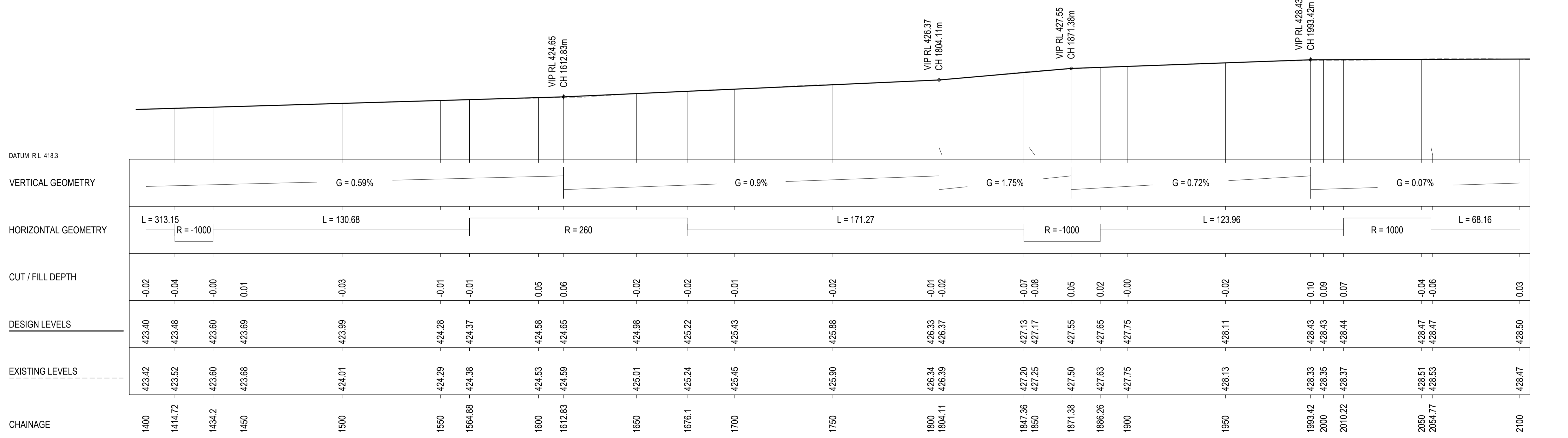
NOT FOR CONSTRUCTION

REFER TO DRAWING C1.003 FOR CONTINUATION

REFER TO DRAWING C1.005 FOR CONTINUATION



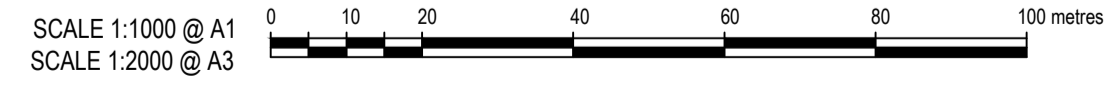
KEY PLAN
SCALE 1:20000



BARNEYS REEF ROAD - MC01

A1 Horizontal Scale 1 : 1000
A1 Vertical scale 1 : 200

© COPYRIGHT of this design and plan is the property of ACOR Consultants Pty Ltd. ACN 079 306 246 ABN 40 079 306 246, all rights reserved. It must not be used, modified, reproduced or copied wholly or in part without written permission from ACOR Consultants Pty Ltd.



NOT FOR CONSTRUCTION

This drawing has been assigned an electronic code that signifies the drawing has been checked and approved by:			
P1	PRELIMINARY ISSUE FOR DISCUSSION	13.04.22	UF CG
Issue	Description	Date	Drawn Approved

Client
UPCIAC RENEWABLES AUSTRALIA
Suite 2, Level 2, Castray Esplanade
Battery Point, TAS, 7004

ACOR CONSULTANTS
ENGINEERS | MANAGERS | INFRASTRUCTURE PLANNERS | DEVELOPMENT CONSULTANTS

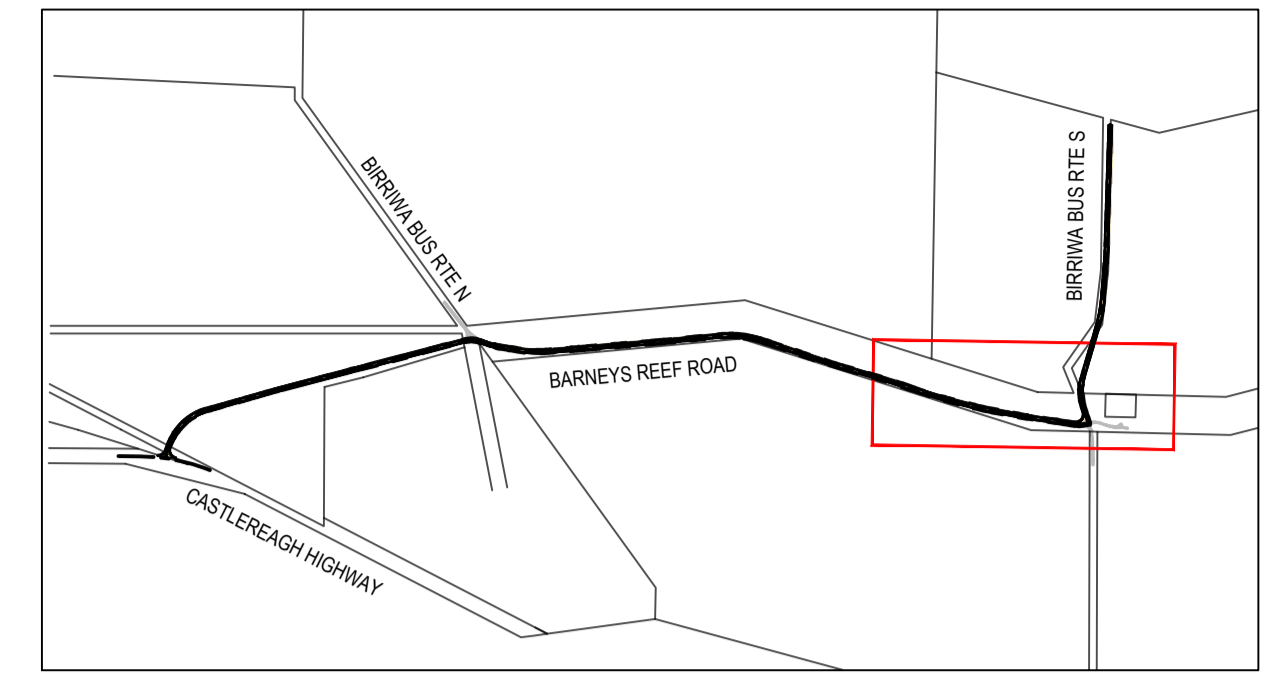
ACOR Consultants Pty Ltd
Unit 10, Level 1, No.1 Maitland Place
Baulkham Hills NSW 2153
T +61 2 9634 6311

Project
BARNEYS REEF ROAD UPGRADE SOLAR FARM ACCESS
BIRRIWA

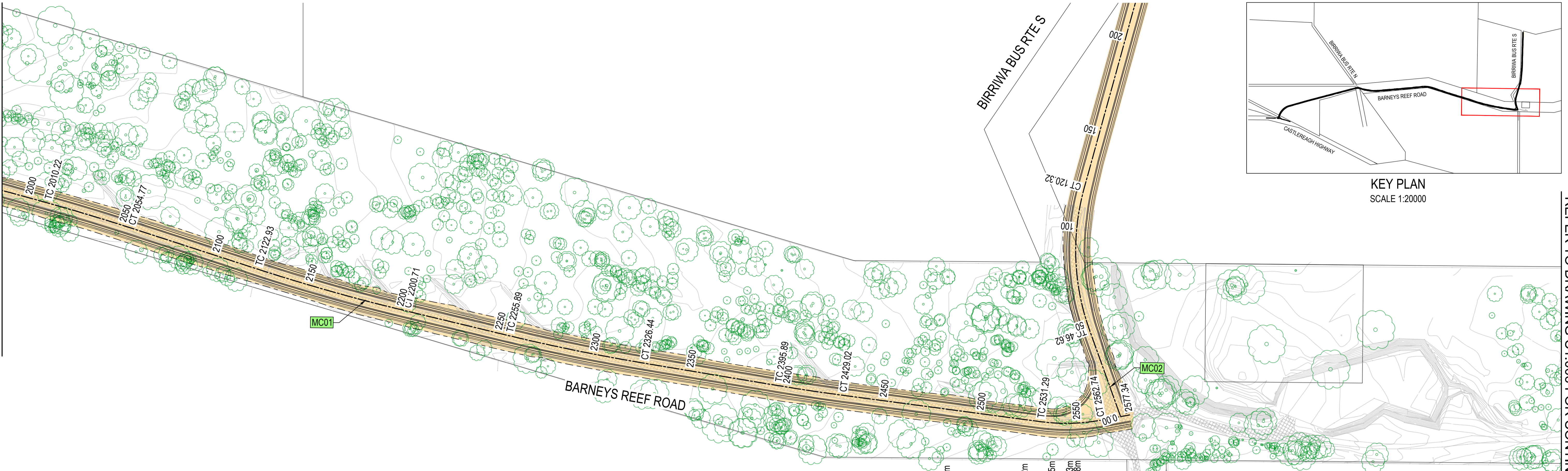
Drawing Title GENERAL ARRANGMENT PLAN SHEET 3 MC01			
Drawn UF	Date Apr-22	Scale 1:1000	A1 G.A. Check Date
Designed VG	Project No. NSW220659	Dwg. No. C1.004	Issue P1

REFER TO DRAWING C1.004 FOR CONTINUATION

REFER TO DRAWING C1.006 FOR CONTINUATION



KEY PLAN
SCALE 1:20000



DATUM RL 423.4																																
VERTICAL GEOMETRY	G = 0.07%					G = 0.85%					G = 0.98%				G = 0.43%		G = 1.97%	G = 0.18%	G = 0.97%	G = 1.22%												
HORIZONTAL GEOMETRY	L = 68.16		R = -1000			L = 55.19			R = -1000		L = 69.45			R = -1000		L = 102.27		R = -100		L = 14.6												
CUT / FILL DEPTH	0.03	-0.06	0.02	-0.00	-0.00	-0.10	-0.04	-0.02	0.02	0.02	0.00	0.00	-0.02	-0.03	-0.02	0.02	-0.00	0.01	0.00	-0.07	-0.06	0.00	0.00	0.00	0.00	0.00	0.00	0.00	0.00	0.00	0.00	0.00
DESIGN LEVELS	428.50	428.52	428.54	428.57	428.57	428.58	428.87	428.92	429.30	429.52	429.69	429.73	430.18	430.22	430.50	430.71	431.19	431.27	431.37	431.44	431.49	431.49	431.71	431.71	431.73	431.73	431.77	431.77	431.70	431.70		
EXISTING LEVELS	428.47	428.58	428.51	428.57	428.58	428.68	428.92	428.95	429.28	429.50	429.69	429.72	430.20	430.25	430.52	430.69	431.20	431.26	431.37	431.51	431.55	431.55	431.71	431.71	431.73	431.73	431.77	431.77	431.70	431.70		
CHAINAGE	2100	2122.93	2150	2200	2200.71	2215.61	2250	2255.89	2300	2326.44	2346.5	2350	2395.89	2400	2429.02	2450	2500	2507.48	2531.29	2547.22	2550	2561.15	2562.74	2570.43	2574.28	2577.34						

VIP RL 428.58 CH 2215.61m

VIP RL 429.69 CH 2346.50m

VIP RL 431.27 CH 2507.48m

VIP RL 431.44 CH 2547.22m

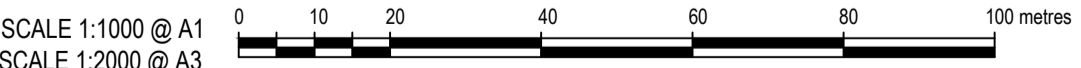
VIP RL 431.71 CH 2561.15m

VIP RL 431.73 CH 2570.43m

VIP RL 431.77 CH 2574.28m

BARNEYS REEF ROAD - MC01

A1 Horizontal Scale 1 : 1000
A1 Vertical scale 1 : 200



© COPYRIGHT of this design and plan is the property of ACOR Consultants Pty Ltd. ACN 079 306 246 ABN 40 079 306 246, all rights reserved. It must not be used, modified, reproduced or copied wholly or in part without written permission from ACOR Consultants Pty Ltd.

This drawing has been assigned an electronic code that signifies the drawing has been checked and approved by:			
Issue	Description	Date	Drawn / Approved
P1	PRELIMINARY ISSUE FOR DISCUSSION	13.04.22	UF / CG
North			

Client
UPCIAC RENEWABLES AUSTRALIA
Suite 2, Level 2, Castray Esplanade
Battery Point, TAS, 7004

UPCIAC Renewables AUSTRALIA

ACOR CONSULTANTS
ENGINEERS | MANAGERS | INFRASTRUCTURE PLANNERS | DEVELOPMENT CONSULTANTS

ACOR Consultants Pty Ltd
Unit 10, Level 1, No.1 Maitland Place
Baulkham Hills NSW 2153
T +61 2 9634 6311

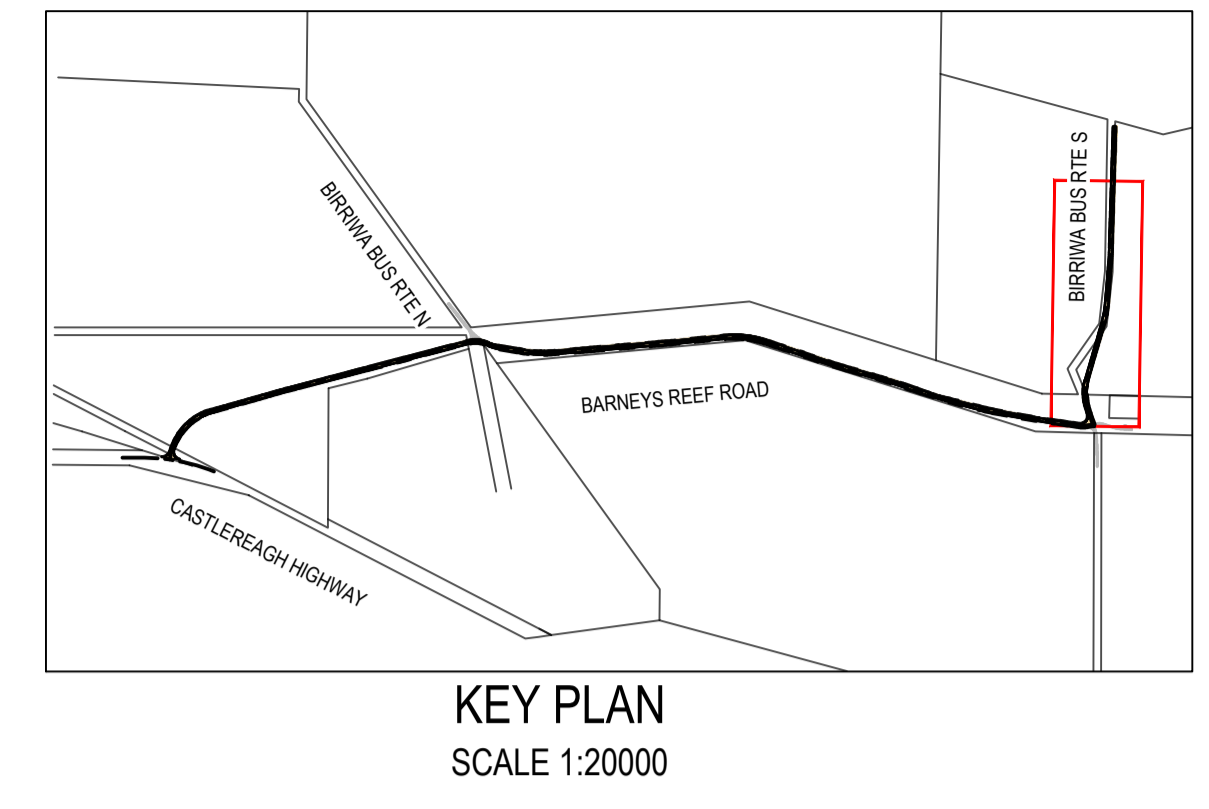
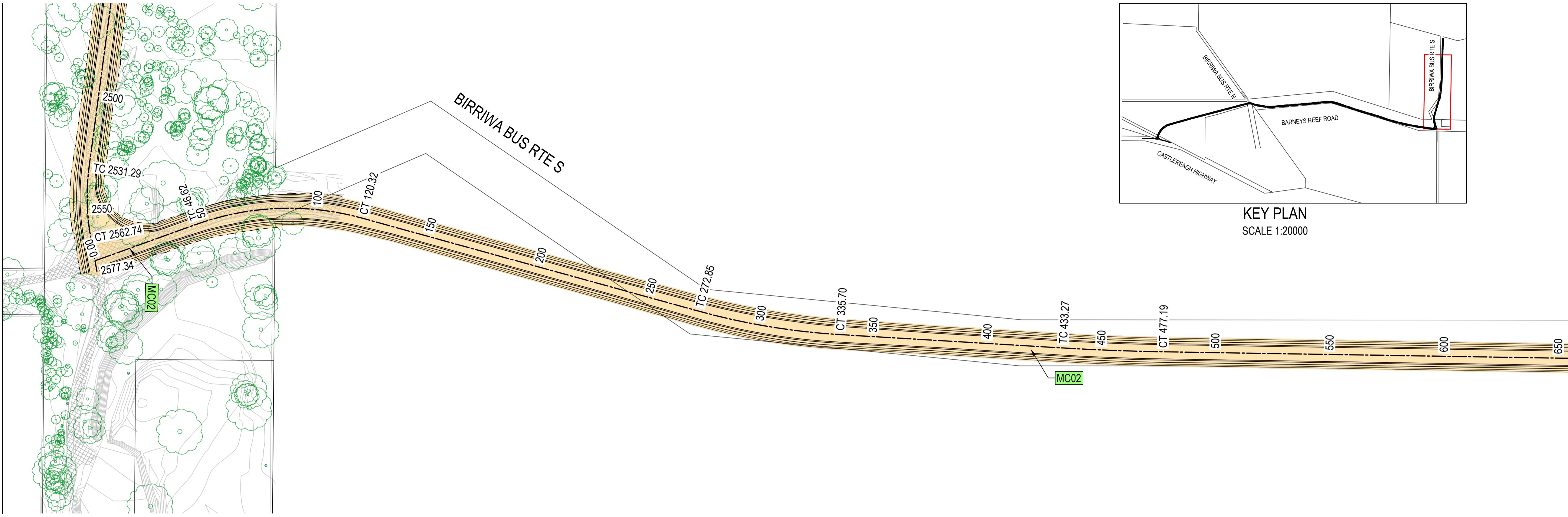
Project
**BARNEYS REEF ROAD UPGRADE
SOLAR FARM ACCESS**
BIRRIWA

Drawing Title GENERAL ARRANGMENT PLAN SHEET 4 MC01			
Drawn	Date	Scale	A1
UF	Apr-22	1:1000	
Designed	Project No.	Dwg. No.	Issue
VG	NSW220659	C1.005	P1

NOT FOR CONSTRUCTION

Vertical scale 1:200 @ A3
Horizontal scale 1:200 @ A3
SCALE 1:200 @ A1
SCALE 1:400 @ A3

REFER TO DRAWING C1.005 FOR CONTINUATION



REFER TO DRAWING C1.007 FOR CONTINUATION

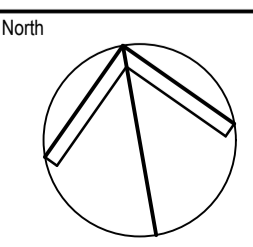
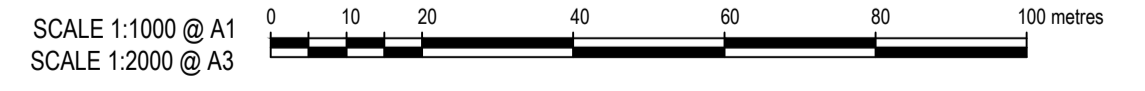
CHAINAGE	0	12.2	25.47	46.62	50	72.95	100	120.32	120.62	150	172.03	200	250	256.15	265.84	272.85	280.21	300	327.94	335.7	350	400	413.57	433.27	450	477.19	500	550	576.41	600	650	669.2	700
EXISTING LEVELS	431.76	431.64	431.66	431.55	431.54	431.42	431.61	431.72	431.72	431.48	431.72	431.57	431.24	431.13	430.95	431.06	431.09	431.24	431.51	431.53	431.62	431.65	431.66	431.66	431.64	431.65	431.66	431.62	431.56	431.56	431.44	431.36	431.25
DESIGN LEVELS	431.76	431.64	431.66	431.55	431.54	431.42	431.60	431.73	431.73	431.75	431.77	431.55	431.17	431.13	430.95	431.02	431.09	431.27	431.51	431.53	431.55	431.64	431.66	431.65	431.64	431.63	431.62	431.59	431.58	431.53	431.44	431.36	431.32
CUT / FILL DEPTH	0.00	0.00	0.00	0.01	0.01	-0.01	-0.02	0.01	0.01	0.27	0.05	-0.01	-0.07	0.00	0.00	-0.04	-0.00	0.03	0.00	-0.01	-0.07	-0.01	0.00	-0.01	0.00	-0.02	-0.04	-0.03	0.00	-0.03	-0.01	0.00	0.07
HORIZONTAL GEOMETRY	L = 46.62		R = 120				L = 152.53				R = 300				L = 97.58				R = 1000				L = 322.46										
VERTICAL GEOMETRY	G = -1.03%		G = 0.22%		G = -0.52%		G = 0.66%		G = 0.06%		G = -0.76%		G = -1.81%		G = 0.99%		G = 0.88%		G = 0.18%		G = -0.05%				G = -0.19%		G = -0.34%						
DATUM RL 425.2	VIP RL 431.64 CH 12.20m		VIP RL 431.66 CH 25.47m		VIP RL 431.42 CH 72.95m		VIP RL 431.73 CH 120.62m		VIP RL 431.77 CH 172.03m		VIP RL 431.13 CH 256.15m		VIP RL 430.95 CH 265.84m		VIP RL 431.09 CH 280.21m		VIP RL 431.51 CH 327.94m		VIP RL 431.66 CH 413.57m		VIP RL 431.58 CH 576.41m		VIP RL 431.36 CH 669.20m										

BARNEYS REEF ROAD - MC02
A1 Horizontal Scale 1 : 1000
A1 Vertical scale 1 : 200

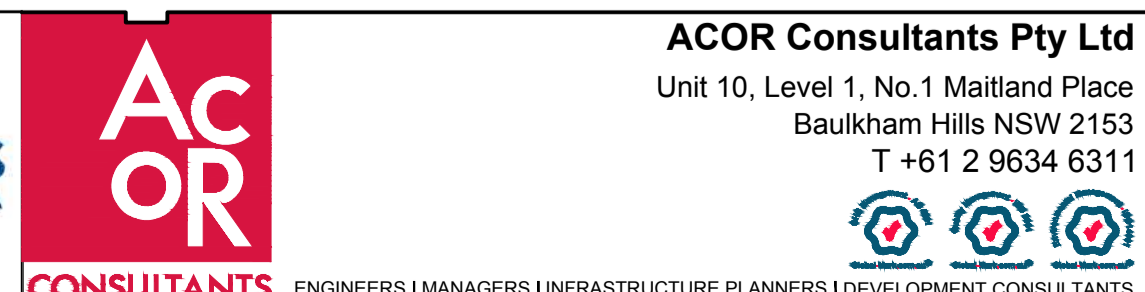
© COPYRIGHT of this design and plan is the property of ACOR Consultants Pty Ltd. ACN 079 306 246 ABN 40 079 306 246, all rights reserved. It must not be used, modified, reproduced or copied wholly or in part without written permission from ACOR Consultants Pty Ltd.

This drawing has been assigned an electronic code that signifies the drawing has been checked and approved by:

Issue	Description	Date	Drawn	Approved
P1	PRELIMINARY ISSUE FOR DISCUSSION	13.04.22	UF	CG



Client
UPCIAC RENEWABLES AUSTRALIA
Suite 2, Level 2, Castray Esplanade
Battery Point, TAS, 7004



ACOR Consultants Pty Ltd
Unit 10, Level 1, No.1 Maitland Place
Baulkham Hills NSW 2153
T +61 2 9634 6311

Project
BARNEYS REEF ROAD UPGRADE SOLAR FARM ACCESS
BIRRIWA

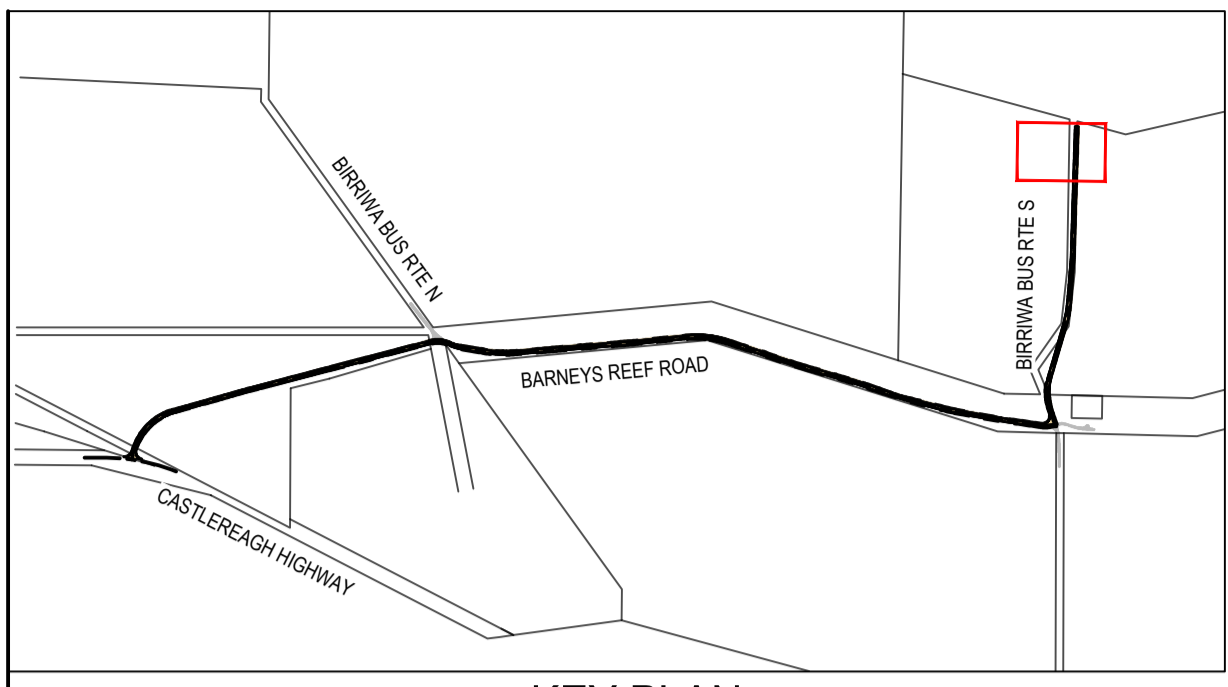
Drawing Title		Scale		Date	
GENERAL ARRANGMENT PLAN SHEET 5 MC02		A1 1:1000		Apr-22	
Drawn	UF	Designed	VG	Q.A. Check	Date
Project No. NSW220659		Dwg. No. C1.006		Issue P1	

NOT FOR CONSTRUCTION

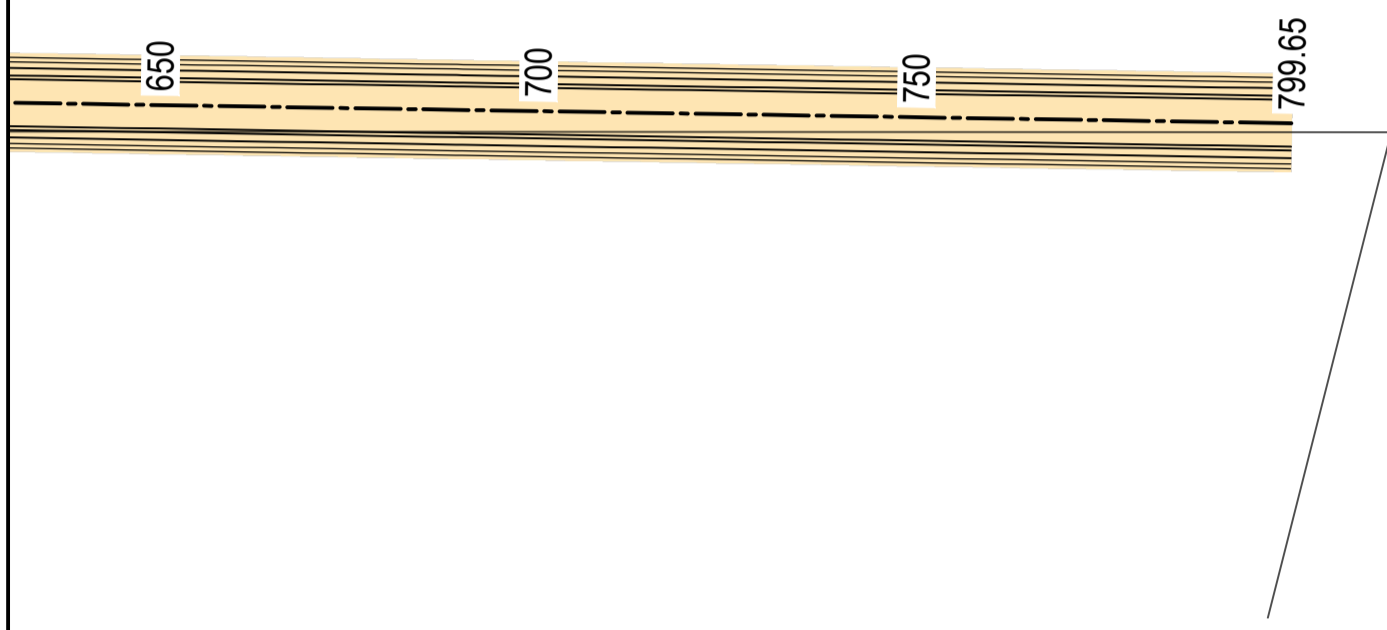
REFER TO DRAWING C1.007 FOR CONTINUATION

C:\Users\mccormack\Documents\Projects\220659\220659_S10_C02_C01_006.dwg

REFER TO DRAWING C1.006 FOR CONTINUATION



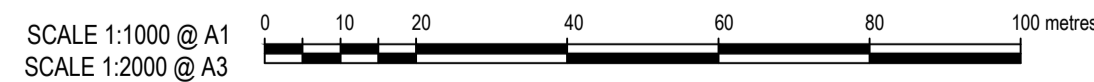
KEY PLAN
SCALE 1:20000



DATUM R.L. 425.9			
VERTICAL GEOMETRY	G = -0.34%		
HORIZONTAL GEOMETRY	L = 322.46		
CUT / FILL DEPTH	0.07	0.20	0.00
DESIGN LEVELS	431.32	431.15	430.98
EXISTING LEVELS	431.25	430.95	430.98
CHAINAGE	700	750	799.65

BARNEYS REEF ROAD - MC02

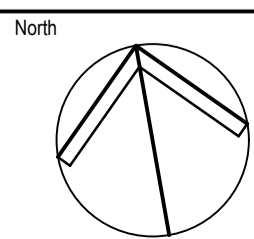
A1 Horizontal Scale 1 : 1000
A1 Vertical scale 1 : 200



© COPYRIGHT of this design and plan is the property of ACOR Consultants Pty Ltd. ACN 079 306 246 ABN 40 079 306 246, all rights reserved. It must not be used, modified, reproduced or copied wholly or in part without written permission from ACOR Consultants Pty Ltd.

This drawing has been assigned an electronic code that signifies the drawing has been checked and approved by:

Issue	Description	Date	Drawn	Approved
P1	PRELIMINARY ISSUE FOR DISCUSSION	13.04.22	UF	CG



Client
UPC/AC RENEWABLES AUSTRALIA
Suite 2, Level 2, Castray Esplanade
Battery Point, TAS, 7004

UPC/AC Renewables AUSTRALIA



ENGINEERS | MANAGERS | INFRASTRUCTURE PLANNERS | DEVELOPMENT CONSULTANTS

ACOR Consultants Pty Ltd
Unit 10, Level 1, No.1 Maitland Place
Baulkham Hills NSW 2153
T +61 2 9634 6311



Project
BARNEYS REEF ROAD UPGRADE SOLAR FARM ACCESS
BIRRIWA

Drawing Title
GENERAL ARRANGMENT PLAN
SHEET 6
MC02

Drawn	Date	Scale	A1	Q.A. Check	Date
UF	Apr-22	1:1000			
Designed	Project No.	Dwg. No.	Issue		
VG	NSW220659	C1.007	P1		

NOT FOR CONSTRUCTION

C:\Users\mccoy\Documents\Projects\NSW220659\Drawings\C1.006\Sheet 6.dwg

C.2 Concept plan of public road crossing



SCALE 1:500 @ A1
SCALE 1:1000 @ A3

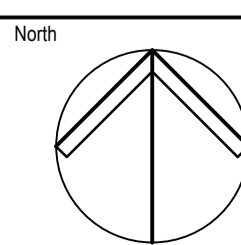


NOT FOR CONSTRUCTION

© COPYRIGHT of this design and plan is the property of ACOR Consultants Pty Ltd. ACN 079 306 246 ABN 40 079 306 246, all rights reserved. It must not be used, modified, reproduced or copied wholly or in part without written permission from ACOR Consultants Pty Ltd.

This drawing has been assigned an electronic code that signifies the drawing has been checked and approved by:

Issue	Description	Date	Drawn	Approved
A	ISSUE FOR INFORMATION	07.06.22	GGC	GGC



Client
UPC/AC RENEWABLES AUSTRALIA
Suite 2, Level 2, Castray Esplanade
Battery Point, TAS, 7004

UPC/AC Renewables AUSTRALIA



ENGINEERS | MANAGERS | INFRASTRUCTURE PLANNERS | DEVELOPMENT CONSULTANTS

ACOR Consultants Pty Ltd
Unit 10, Level 1, No.1 Maitland Place
Baulkham Hills NSW 2153
T +61 2 9634 6311



Project
BARNEYS REEF ROAD UPGRADE SOLAR FARM ACCESS
BIRRIWA

Drawing Title
GENERAL ARRANGEMENT PLAN INDICATIVE SITE ACCESS CONFIGURATION

Drawn	Date	Scale	A1	Q.A. Check	Date
GGC	JUN-22	1:500			
Designed	Project No.	Dwg. No.	Issue		
GGC	NSW220659	C1.001	A		

18/06/2022 10:58:52 AM C:\Users\p\Documents\Projects\NSW220659\Drawings\A1\General Arrangement Plan\Indicative Site Access Configuration\A1_001.dwg