

SHEET No. SHEET NAME

000 INFORMATION

L000	TITLE SHEET
L001	LEGEND
L002	MATERIALS AND FINISHES SCHEDULE
L003	MASTER PLANT SCHEDULE

100 DEMOLITION AND SITE PROTECTION PLAN

L101	TREE RETENTION + REMOVAL PLAN
------	-------------------------------

200 GENERAL ARRANGEMENT PLAN

L200	SITE PLAN
L201	GENERAL ARRANGEMENT PLAN - SHEET 1
L202	GENERAL ARRANGEMENT PLAN - SHEET 2
L203	GENERAL ARRANGEMENT PLAN - SHEET 3
L204	GENERAL ARRANGEMENT PLAN - SHEET 4
L205	GENERAL ARRANGEMENT PLAN - SHEET 5

700 SECTIONS

L701	LANDSCAPE SECTIONS
L702	LANDSCAPE SECTIONS
L703	LANDSCAPE SECTIONS
L704	LANDSCAPE SECTIONS



PROJECT RENDER



LOCATION PLAN

NOTES

THESE DRAWINGS ARE TO BE READ IN CONJUNCTION WITH ALL LANDSCAPE SCHEDULES AND TECHNICAL SPECIFICATION AND OTHER CONSULTANTS DRAWINGS. CHECK AND VERIFY ALL DIMENSIONS AND SITE CONDITIONS PRIOR TO THE COMMENCEMENT OF ANY WORK. DO NOT SCALE DRAWINGS - REFER TO FIGURED DIMENSIONS ONLY. INFORM OCULUS OF ANY DISCREPANCIES FOR CLARIFICATION BEFORE PROCEEDING. UNLESS NOTED OTHERWISE THIS DRAWING IS NOT FOR CONSTRUCTION.

© OCULUS 2017 All rights reserved



SERVICES SHOWN ON THIS DRAWING ARE APPROXIMATELY ONLY. THE EXACT LOCATION IS TO BE CONFIRMED ON SITE BY CONTRACTOR PRIOR TO COMMENCEMENT WORK.

KEY PLAN

ISSUE	DATE	AMENDMENT	DRN	APRVD
A	16.09.22	SSDA	SL	AK

O C U L U S

level 1 / 5 wilson street, p.o. box 307, newtown, nsw 2042
p 02.9557.5533 australia@oculus.info
SYDNEY MELBOURNE WASHINGTON

PROJECT

**THE FOREST HIGH SCHOOL
ALLAMBIE HEIGHTS**

CLIENT

**SINSW
259 GEORGE STREET, SYDNEY NSW 2000**

ARCHITECT

**ARCHITECTUS
19 MARTIN PL, SYDNEY NSW 2000**

STATUS

**SSDA
DEVELOPMENT APPLICATION**

DRAWING SCALE

SCALE 1:200 @ A1
2 0 2 4 10m

NORTH POINT



DRAWING

COVER SHEET

PROJECT No

S20-032

DRAWING No

L000

SHEET SIZE

A1

ISSUE

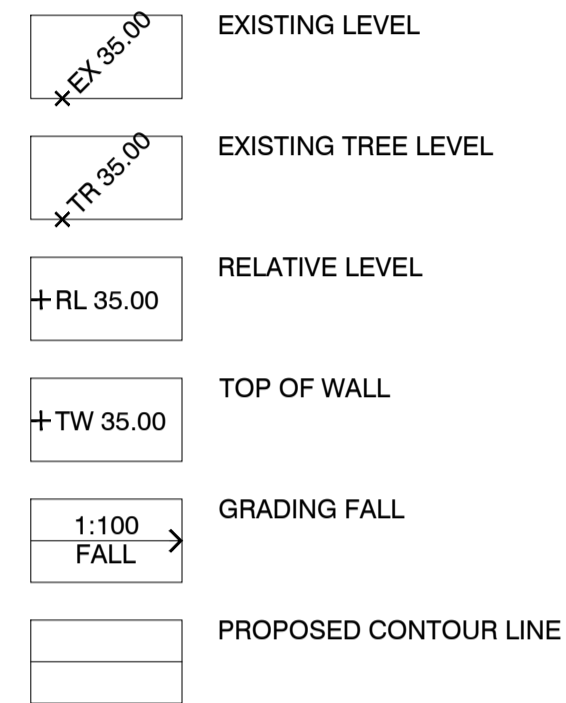
A

LEGEND

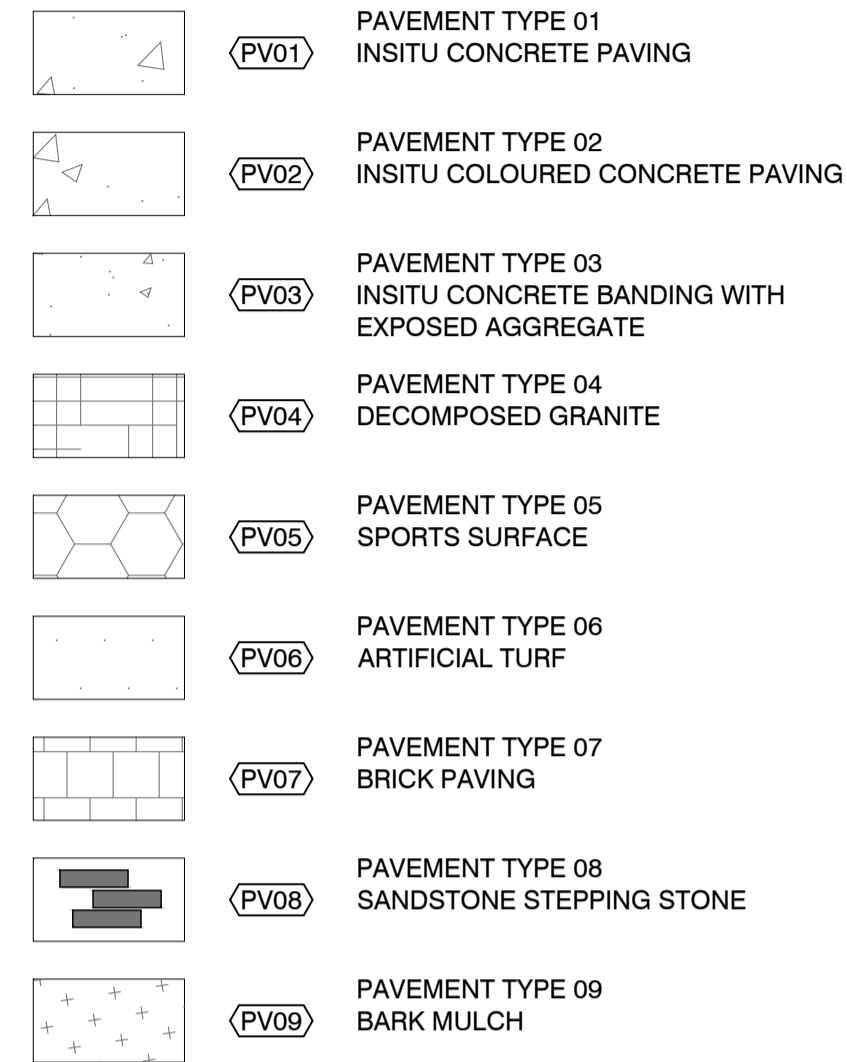
GENERAL



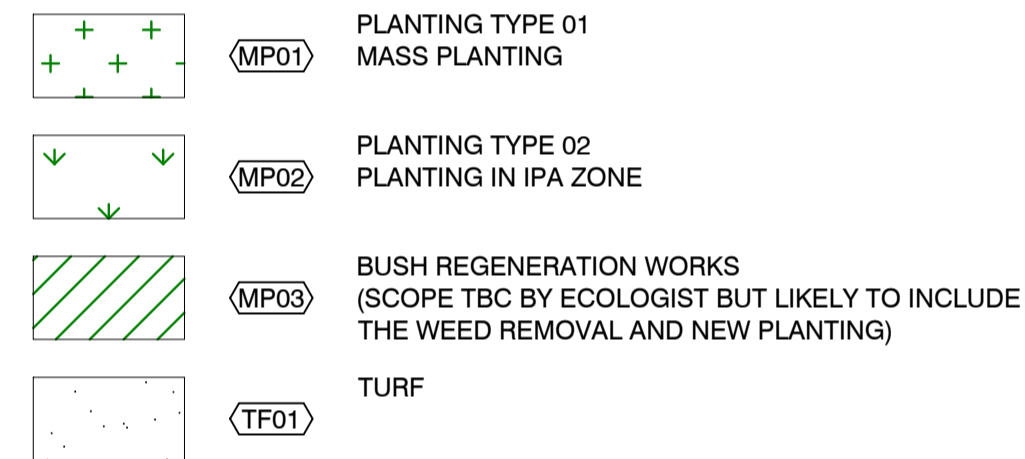
GRADING



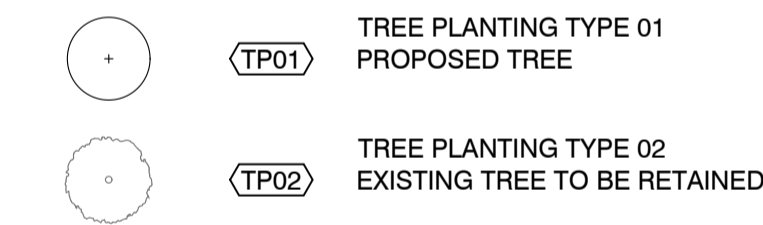
PV - PAVING



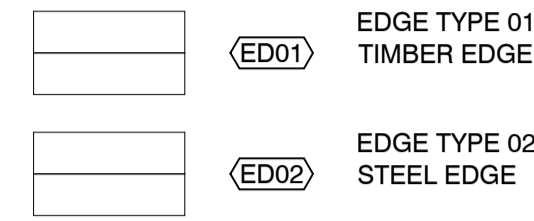
PL - PLANTING



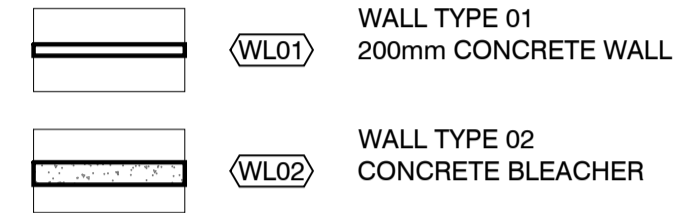
TP - TREE PLANTING



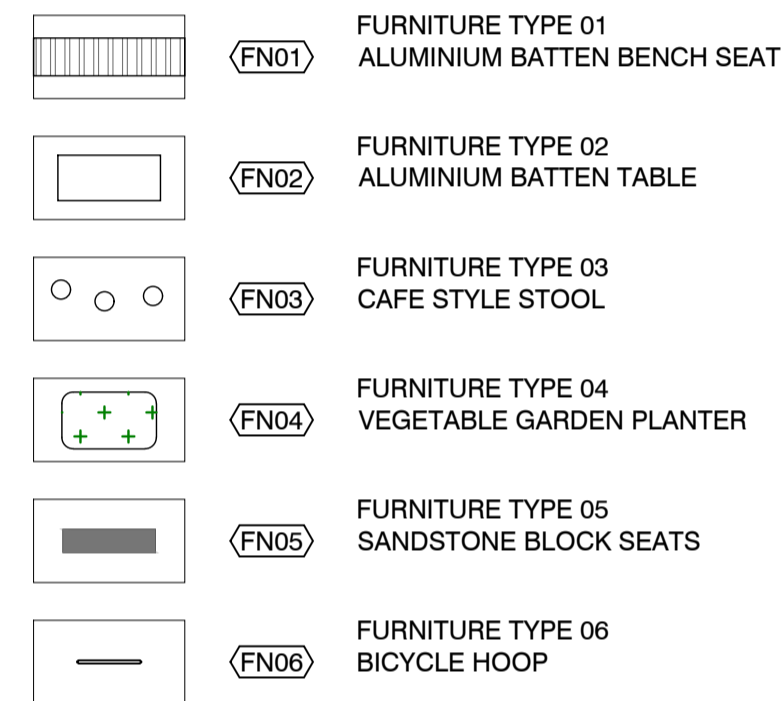
ED - EDGES



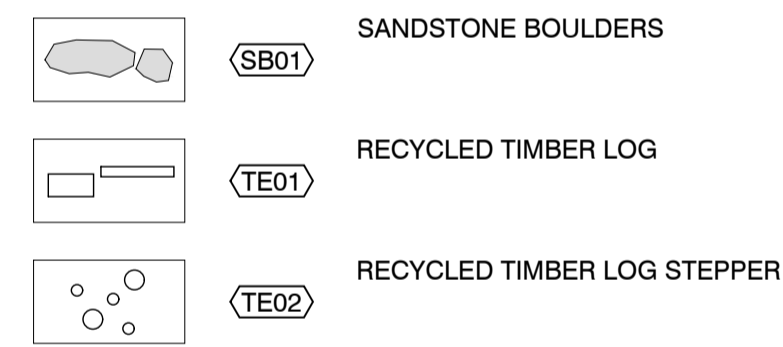
WL - WALLS



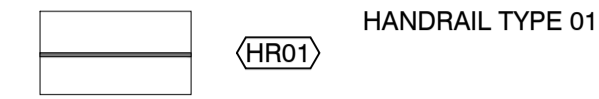
FN - FURNITURE



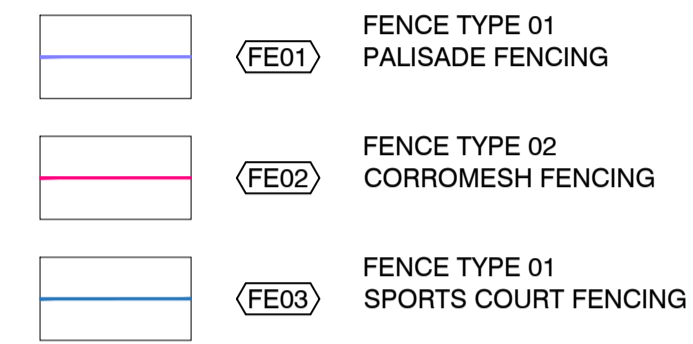
LANDSCAPE ELEMENTS



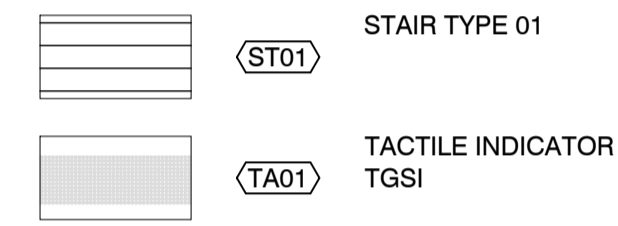
HR - HANDRAIL



FE - FENCES



ST - STAIRS



NOTES

THESE DRAWINGS ARE TO BE READ IN CONJUNCTION WITH ALL LANDSCAPE SCHEDULES AND TECHNICAL SPECIFICATION AND OTHER CONSULTANTS DRAWINGS. CHECK AND VERIFY ALL DIMENSIONS AND SITE CONDITIONS PRIOR TO THE COMMENCEMENT OF ANY WORK. DO NOT SCALE DRAWINGS - REFER TO FIGURED DIMENSIONS ONLY. INFORM OCULUS OF ANY DISCREPANCIES FOR CLARIFICATION BEFORE PROCEEDING. UNLESS NOTED OTHERWISE THIS DRAWING IS NOT FOR CONSTRUCTION.

© OCULUS 2017. All rights reserved.



SERVICES SHOWN ON THIS DRAWING ARE APPROXIMATELY ONLY. THE EXACT LOCATION IS TO BE CONFIRMED ON SITE BY CONTRACTOR PRIOR TO COMMENCEMENT WORK.

KEY PLAN



ISSUE	DATE	AMENDMENT	DRN	APRVD
01	11.08.22	SCHEMATIC DESIGN	SL	AK



level 1 / 5 Wilson Street, p.o. box 307, Newtown, NSW 2042
 p 02.9557.5533 australia@oculus.info
 SYDNEY MELBOURNE WASHINGTON

PROJECT
**THE FOREST HIGH SCHOOL
 ALLAMBIE HEIGHTS**
 CLIENT
SINSW
 259 GEORGE STREET, SYDNEY NSW 2000
 ARCHITECT
ARCHITECTUS
 19 MARTIN PL, SYDNEY NSW 2000

STATUS
SCHEMATIC DESIGN
 FOR INFORMATION

DRAWING SCALE NORTH POINT

LEGEND

PROJECT N° S20-032	SHEET SIZE A1
DRAWING N° L001	ISSUE 01

THE FOREST HIGH SCHOOL MATERIAL SCHEDULE

CODE	DESCRIPTION	Location	DETAILS
SURFACE FINISHES			
PV01	INSITU CONCRETE PAVING	Main paving, Walkways and ramps	100mm thick insitu concrete paving on compacted base. Finish: Broom finish. Colour: Portland Grey
PV02	INSITU COLOURED CONCRETE PAVING	Secondary paving, Assembly Court and Gathering Area	100mm thick reinforced insitu coloured concrete to use a spray applied polymer modified high strength cement based coloured mortar equal to Concrete Colour System (CCS) Stylepave Overlay Resurfacing in Fine Grain texture finish as supplied by Concrete Colour Systems or similar to be approved. Coloured overlay shall be applied in two coats and immediately sealed with two coats of CCS commercial grade Armourthane sealer. Finish: Broom Finish Colour: CCS Desert Buff
PV03	INSITU COLOURED CONCRETE BANDING WITH EXPOSED AGGREGATE	Banding paving, Assembly Court and Gathering Area	100mm thick reinforced insitu coloured concrete to use a spray applied polymer modified high strength cement based coloured mortar equal to Concrete Colour System (CCS) Stylepave Overlay Resurfacing in Fine Grain texture finish as supplied by Concrete Colour Systems or similar to be approved. Coloured overlay shall be applied in two coats and immediately sealed with two coats of CCS commercial grade Armourthane sealer. Finish: Exposed aggregate finish with custom aggregate and integral colour (Aggregate TBC). Colour: CCS Paperbark
PV04	DECOMPOSED GRANITE	Outdoor learning areas and near existing trees	100mm compacted depth decomposed granite gravel laid on prepared base course and subgrade.
PV05	SPORTS SURFACE	Sports court	Acrylic hard court system on concrete slab. Refer to engineers detail and specification. Painted line marking.
PV06	ARTIFICIAL TURF	Sports Field	Sports field artificial turf. Product: LigaTurf HB250 Supplier: APT Asia Pacific Colour: Field Green Refer to manufacturer for specification and fixing detail.
PV07	BRICK PAVING	Tree in paving surrounds	Brick paving Base: Bricks laid on 30mm mortar bed over concrete base. Finish: Bricks laid in stretcher bond. Colour range of recycled bricks to be approved by landscape architect.
PV08	SANDSTONE STEPPING STONES	Garden beds	Quarried sandstone logs laid into sloping garden bed as informal steps. Base: logs laid on 30mm mortar bed to concrete base. Finish: Natural split
PV09	BARK MULCH	Forest Pathway	Supplier and specification TBC.
PV10	ASPHALT PAVING	Driveway and Loading zone	Asphalt detail to civil engineer's documentation.
WALLS, STAIRS, EDGES & FENCES			
WL01	CONCRETE RETAINING WALL	Terracing and planting	Insitu Concrete Retaining Wall. Finish: 32MPa reinforced white cement insitu concrete walls with class 2 finish. Tie holes to be plugged to finish 5mm below surface. 10mm chamfer to top edges. Waterproof membrane to internal face with planting medium. Notes: All landscape retaining walls to be less than 1m high.
WL02	INSITU CONCRETE BLEACHER	Bleacher seating	Cast insitu concrete bleacher with reinforcing to structural engineers detail. Each tread to have contrasting nose strip recessed into stairs only as per detail. Ensure luminance contrast is achieved. Tactiles installed to top and bottom of stair to AS 1428. Colour: Portland Grey
ST01	INSITU CONCRETE STAIR	Refer drawings for locations	Cast insitu concrete stairs with reinforcing to structural engineers detail. Concrete to be broom finish to tread to ensure AS slip resistance compliance and class 2 finish to riser. Each tread to have contrasting nose strip as per detail. Tactiles installed to top and bottom of stair to AS1428. Refer detail for riser and tread dimensions Colour: Portland Grey
HR01	STEEL HANDRAILS	To all stairs and ramps exceeding 1:20 grade	40mm Dia rolled Galvanised Steel double handrail looped at end, with 40mm Dia stainless steel uprights as per details. Handrail to comply with AS1428. Detail to EFSG requirements.
TGSI01	TACTILE SURFACE INDICATORS	To all stairs and ramps exceeding 1:20 grade	Safespot 'Luna' ribbed stainless steel tactiles with ribbed polymer black centre infill to meet AS1428.4:2002 Tactile Indicators. Slip resistant.
ED01	TIMBER EDGE	Between planting and turf	100 x 38mm timber edging, fixed to 50 x 50 x 600mm long pegs on garden sides of edge. Timber to be termite resistant.
ED02	RAISED EDGE	To planter beds between terracing	300-450mm height x 150mm thick concrete edging. Compacted sub base to engineers specification
FE01	SECURITY FENCE	School Boundary	2.4m high Steel Palisade Security Fence. 2400mm high hot dipped galvanised and powdercoated perimeter fence. Concrete footings. Supplier TBC.
FE02	SECURITY FENCE	Secondary Secure Line	2.1m high 'Corromesh' Security Fence. 2100mm galvanised and high-quality polyseter powder coated mesh fence Concrete footings. Supplier TBC.
FE03	SPORTS COURT & FIELD FENCING	Around sports courts and field	2.4m high galvanised steel chainwire multi-purpose sports fence. Concrete footings. Supplier TBC.
GA01	SWING GATE	School Boundary & Internal	Refer to Architect's documentation for detail and specification.
GA02	SLIDING GATE	School Boundary & Internal	Refer to Architect's documentation for detail and specification.

STRUCTURES & FURNITURE

FN01	BENCH SEAT	Gathering and Outdoor Learning areas	Linea Seat on insitu concrete base. Supplier: Street Furniture Australia Legs and Mounting: Plinth fixed to concrete slab base Frame: TBC Batten: Aluminium 'Spotted Gum', end cap to match frame colour.
FN02	TABLE	Outdoor Learning areas	Linea Table on insitu concrete base. Supplier: Street Furniture Australia Legs and Mounting: Pedestal surface fixed to concrete slab base Frame: TBC Batten: Aluminium Spotted Gum, end cap to match frame colour.
FN03	STOOLS	Outdoor Learning areas	Cafe Stool on insitu concrete base. Supplier: Street Furniture Australia Legs and Mounting: Baseplate surface fixed to concrete slab base Colour: TBC
FN04	VEGETABLE GARDEN PLANTER	Outdoor Learning Area	Steel raised planter bed Finish: Powdercoated colour TBC
FN05	SANDSTONE BLOCK SEATS	Passive Areas	Quarried sandstone log Grade B in random sizes. Laid on compacted subgrade. Any exposed sharp edges to be smoothed and rounded off. Allow for minimum 25% coverage. Finish: Sawn to Top, Split to sides
FN06	BICYCLE RACK	Bicycle Parking	Semi Hoop on insitu concrete base Supplier: Street Furniture Australia Finish: Brushed 304 Stainless Steel Mounting: Subsurface Fixed

LANDSCAPE ELEMENTS

SB01	SANDSTONE BOULDERS	Passive Landscape and garden beds	Large to medium sizes, natural manhandables. Laid in garden beds as informal seating elements and stepping stones.
TE01	RECYCLED TIMBER LOG SEATING	Passive Areas	Recycled timber logs from existing site trees to be removed. TBC
TE02	RECYCLED TIMBER LOG STEPPERS	Passive Areas	Recycled timber steppers from existing site trees to be removed. TBC

SOFT LANDSCAPING

MP01	MASS PLANTING	As shown	Planting as scheduled in prepared garden beds. Includes subsoil drainage, imported organic topsoil, 75mm deep gravel mulch and other planting requirements. Provide details of mulch for approval. Topsoil depth as detailed and specified.
MP02	MASS PLANTING WITHIN IPA	As shown	Planting as scheduled in prepared garden beds. Includes subsoil drainage, imported organic topsoil, 75mm deep gravel mulch and other planting requirements. Provide details of mulch for approval. Topsoil depth as detailed and specified. Managed understorey planting with 10% shrub cover and 90% groundcover to align with bushfire prevention guidelines.
MP03	FOREST REGENERATION PLANTING	As shown	Bush regeneration works - scope TBC by ecologist but likely to include weed removal and new planting.
MU01	GRAVEL MULCH	To all garden beds	75mm non-organic mulch layer.
TF01	TURF	Passive areas	Turfing to rolled out on prepared ground, includes subsoil drainage, imported turf underlay mix and ameliorated site topsoil, soil depth as detailed and specified.
TP01	TREE PLANTING	As shown	Existing ground excavated to detailed depth. Planting as scheduled in prepared treepit. Includes subsoil drainage, imported A horizon organic topsoil, imported B horizon soil, 75mm deep organic mulch and other planting requirements. Provide details of mulch for approval. Topsoil depth as detailed and specified.
TP02	EXISTING TREE TO BE RETAINED	As shown. Refer to Tree Retention and Removal Plan.	Existing tree to be retained and protected. Refer to Arborist report for protection specifications.

NOTES

THESE DRAWINGS ARE TO BE READ IN CONJUNCTION WITH ALL LANDSCAPE SCHEDULES AND TECHNICAL SPECIFICATION AND OTHER CONSULTANTS DRAWINGS. CHECK AND VERIFY ALL DIMENSIONS AND SITE CONDITIONS PRIOR TO THE COMMENCEMENT OF ANY WORK. DO NOT SCALE DRAWINGS - REFER TO FIGURED DIMENSIONS ONLY. INFORM OCULUS OF ANY DISCREPANCIES FOR CLARIFICATION BEFORE PROCEEDING. UNLESS NOTED OTHERWISE THIS DRAWING IS NOT FOR CONSTRUCTION.

© OCULUS 2017 All rights reserved



SERVICES SHOWN ON THIS DRAWING ARE APPROXIMATELY ONLY. THE EXACT LOCATION IS TO BE CONFIRMED ON SITE BY CONTRACTOR PRIOR TO COMMENCEMENT WORK.

KEY PLAN

ISSUE	DATE	AMENDMENT	DRN	APRVD
A	16.09.22	SSDA	SL	AK

OCULUS

level 1 / 5 Wilson Street, p.o. box 307, Newtown, NSW 2042
p 02.9557.5533 australia@oculus.info
SYDNEY MELBOURNE WASHINGTON

PROJECT

**THE FOREST HIGH SCHOOL
ALLAMBIE HEIGHTS**

CLIENT

**SINSW
259 GEORGE STREET, SYDNEY NSW 2000**

ARCHITECT

**ARCHITECTUS
19 MARTIN PL, SYDNEY NSW 2000**

STATUS

**SSDA
DEVELOPMENT APPLICATION**

DRAWING SCALE

NORTH POINT

DRAWING

**MATERIALS AND
FINISHES SCHEDULE**

PROJECT No

S20-032

DRAWING No

L002

SHEET SIZE

A1

ISSUE

A

Code	Botanic Name	Common Name	Mature Height (metres)	Mature Spread (metres)	Spacing / m2	Pot Size
TREES						
AC	<i>Angophora costata</i> **	Sydney Red Gum	25m	15m	As shown	400L
AP	<i>Acer palmatum 'Sango Kaku'</i>	Coral Bark Maple	8m	4m	As shown	100L
BS	<i>Banksia serrata</i> **	Old Man Banksia	15m	4m	As shown	100L
CG	<i>Corymbia gummifera</i> **	Red Bloodwood	30m	10m	As shown	100L
EH	<i>Eucalyptus haemastoma</i> **	Scribbly Gum	15m	15m	As shown	100L
SS	<i>Stenocarpus sinuatus</i> *	Fire Wheel Tree	20m	8m	As shown	200L
TL	<i>Tristaniopsis laurina 'Laurina'</i> *	Water Gum	15m	6m	As shown	100L

FEATURE PLANTING						
AnGV	<i>Anigozanthos 'Gold Velvet'</i> *	Kangaroo Paw	1m	1m	500mm	300mm
Doex	<i>Doryanthes excelsa</i> *	Gymea Lily	2m	1.2m	As shown	300mm
Grca	<i>Grevillea caleyi</i> **	Caley's grevillea	2m	2m	As shown	300mm
Tesp	<i>Telopea speciosissima</i> **	Waratah	3m	2m	500mm	200mm
Xame	<i>Xanthorrhoea media</i> **	Grass Tree	1m	1m	As shown	300mm
Zafu	<i>Zamia furfuracea</i>	Cardboard Palm	1m	2m	500mm	200mm

SHRUBS						
Aclo	<i>Acacia longifolia</i> **	Sydney Golden Wattle	6m	4m	As shown	200mm
Acul	<i>Acacia ulicifolia</i> **	Prickly Moses	2m	2m	500mm	200mm
Basp	<i>Banksia spinulosa</i> **	Hairpin Banksia	0.5m	1.5m	500mm	200mm
CgAR	<i>Ceratopetalum gummiferum 'Alberys Red'</i> **	NSW Christmas Bush	5m	3m	600mm	300mm
Dotr	<i>Dodonaea triquetra</i> *	Common Hop-Bush	3m	2m	500mm	140mm
GrSe	<i>Grevillea speciosa</i>	Red Spider Flower	3m	2m	400mm	300mm
Pepu	<i>Petrophile pulchella</i> **	Conesticks	2m	1m	500mm	200mm
LePC	<i>Leptospermum 'Pink Cascade'</i> *	Pink Cascade	0.8m	1.5m	600mm	300mm
Letr	<i>Leptospermum trinervium</i> **	Flaky-Barked Tea-Tree	2m	2m	600mm	300mm
WfGB	<i>Westringia fruticosa 'Grey Box'</i> *	Compact Coastal Rosemary	0.45m	0.45m	500mm	200mm

GROUNDCOVERS, HERBS, CLIMBERS						
Ache	<i>Actinotus helianthi</i> *	Flannel Flower	1.2m	0.5m		140mm
Adae	<i>Adiantum aethiopicum</i> *	Common Maidenhair	0.5m	0.5m		140mm
Blec	<i>Blechnum sp.</i> *	Dwarf Tree Fern	1m	2m		140mm
Bisc	<i>Billardiera scandens</i> **	Apple Berry Dumplings	1.5m	3m		140mm
Cagl	<i>Carpobrotus glaucescens</i> *	Native Pigface	0.2m	1m		140mm
Cian	<i>Cissis antarctica</i> *	Kangaroo Grape	4m	6m		140mm
Clgl	<i>Clematis glycinoides</i> *	Native Clematis	2.5m			140mm
Dica	<i>Dianella caerulea</i> **	Blue Flax Lily	1m	2m		140mm
Doas	<i>Doodia aspera</i> *	Rasp Fern	0.4m	0.6m		140mm
Fino	<i>Ficinia nodosa</i> *	Knobby Club Rush	1.5m	2m		140mm
Glcl	<i>Glycine clandestina</i> *	Love Creeper	0.2	2m		140mm
Goov	<i>Goodenia ovata</i> *	Hop Goodenia	0.3m	2m		140mm
Hisc	<i>Hibbertia scandens</i> *	Golden Guinea Flower	3m	5m		140mm
Inau	<i>Indigofera australis</i> *	Australian Indigo	2m	2m		140mm
PaSe	<i>Patersonia sericea</i> **	Native Iris	0.6m	0.3m		140mm
Pili	<i>Pimelea linifolia</i> **	Slender Rice Flower	0.4m	0.8m		140mm
Keru	<i>Kennedia rubicunda</i> *	Dusky Coral Pea	3m	3m		140mm
Vihe	<i>Viola hederacea</i> *	Native Violet	0.2m	1m		140mm

GRASSES						
Caap	<i>Carex appressa</i> *	Sedge	1m	1m		140mm
CgCl	<i>Casuarina glauca 'Cousin It'</i> **	Sheoak 'Cousin It'	0.3m	1m		140mm
Cyre	<i>Cymbopogon refractus</i> *	Barbed Wire Grass	1m			140mm
Digr	<i>Dietes grandiflora</i>	Fairy Iris	0.8m	0.8m		140mm
Dich	<i>Dichelachne sp.</i> *	Plume Grass	0.2m	1.2m		140mm
LoLo	<i>Lomandra longifolia</i>	Common Mat-rush	1m	1m		140mm
LoBR	<i>Lomandra glauca 'Blue Ridge'</i> **	Lomandra Blue Ridge	0.6m	0.6m		140mm
Lomu	<i>Lomandra multiflora</i> **	Mat-rush	0.3m	1.5m		140mm
Thau	<i>Themeda australis</i>	Kangaroo Grass	0.6m	0.6m		140mm

EDIBLE NATIVE GARDEN -TBC						
AcAc	<i>Acacia acuminata</i> *	Raspberry jam Wattle	5m	3m		100L
AcRa	<i>Acronychia acidula</i>	Lemon Aspen	12m	4m		100L
CiAu	<i>Citrus australasica</i>	Finger Lime	3m	3m		300mm
Cyam	<i>Cymbogopon ambiguus</i>	Native Lemon Grass	1-2m	1-2m		140mm
PoEl	<i>Podocarpus elatus</i>	Illawarra Plum	15m	5m		100L

NOTES

THESE DRAWINGS ARE TO BE READ IN CONJUNCTION WITH ALL LANDSCAPE SCHEDULES AND TECHNICAL SPECIFICATION AND OTHER CONSULTANTS DRAWINGS. CHECK AND VERIFY ALL DIMENSIONS AND SITE CONDITIONS PRIOR TO THE COMMENCEMENT OF ANY WORK. DO NOT SCALE DRAWINGS - REFER TO FIGURED DIMENSIONS ONLY. INFORM OCULUS OF ANY DISCREPANCIES FOR CLARIFICATION BEFORE PROCEEDING. UNLESS NOTED OTHERWISE THIS DRAWING IS NOT FOR CONSTRUCTION.

© OCULUS 2017. All rights reserved.



SERVICES SHOWN ON THIS DRAWING ARE APPROXIMATELY ONLY. THE EXACT LOCATION IS TO BE CONFIRMED ON SITE BY CONTRACTOR PRIOR TO COMMENCEMENT WORK.

KEY PLAN

ISSUE	DATE	AMENDMENT	DRN	APRVD
A	16.09.22	SSDA	SL	AK

OCULUS

level 1 / 5 Wilson Street, P.O. Box 307, Newtown, NSW 2042
 p 02.9557.5533 australia@oculus.info
 SYDNEY MELBOURNE WASHINGTON

PROJECT

**THE FOREST HIGH SCHOOL
 ALLAMBIE HEIGHTS**

CLIENT

**SINSW
 259 GEORGE STREET, SYDNEY NSW 2000**

ARCHITECT

**ARCHITECTUS
 19 MARTIN PL, SYDNEY NSW 2000**

STATUS

**SSDA
 DEVELOPMENT APPLICATION**

DRAWING SCALE

NORTH POINT

DRAWING

**MASTER PLANT
 SCHEDULE**

PROJECT No

S20-032

DRAWING No

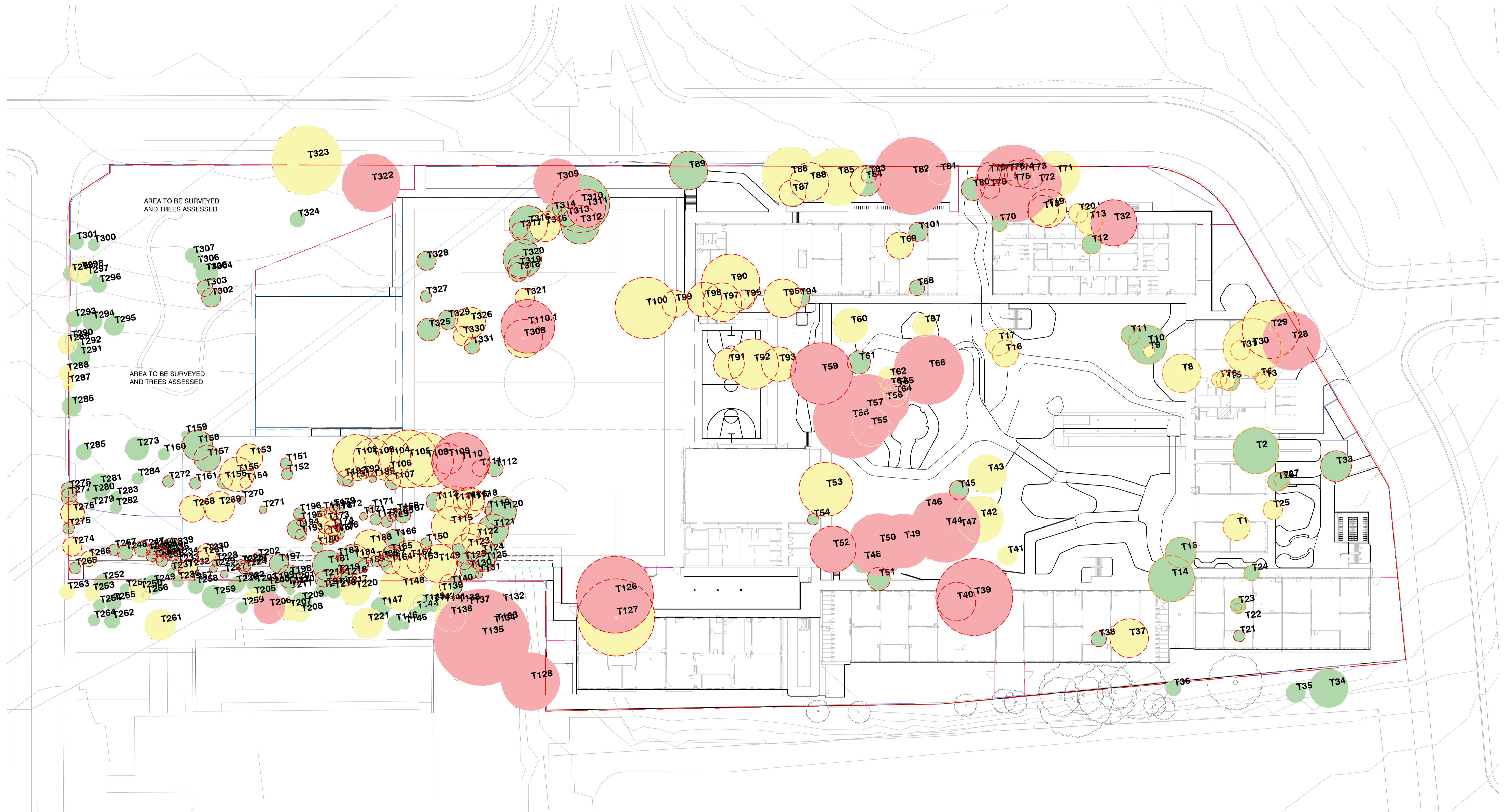
L003

SHEET SIZE

A1

ISSUE

A



LEGEND

	EXISTING TREE TO BE RETAINED	- 146		HIGH RETENTION VALUE: 25	- EXISTING TREES TO BE RETAINED: 16	- EXISTING TREES TO BE REMOVED: 9
	EXISTING TREE TO BE REMOVED	- 226		MEDIUM RETENTION VALUE: 78	- EXISTING TREES TO BE RETAINED: 31	- EXISTING TREES TO BE REMOVED: 47
	EXISTING TREE ALREADY REMOVED UNDER EXISTING APPROVAL	- 34		LOW RETENTION VALUE: 269	- EXISTING TREES TO BE RETAINED: 98	- EXISTING TREES TO BE REMOVED: 171
					- EXISTING TREES ALREADY REMOVED: 13	- EXISTING TREES ALREADY REMOVED: 21

*TO BE READ IN CONJUNCTION WITH THE FOREST HIGH TREE ASSESSMENT REPORT BY ECO LOGICAL AUSTRALIA.

NOTES
 THESE DRAWINGS ARE TO BE READ IN CONJUNCTION WITH ALL LANDSCAPE SCHEDULES AND TECHNICAL SPECIFICATION AND OTHER CONSULTANTS DRAWINGS. CHECK AND VERIFY ALL DIMENSIONS AND SITE CONDITIONS PRIOR TO THE COMMENCEMENT OF ANY WORK. DO NOT SCALE DRAWINGS - REFER TO FIGURED DIMENSIONS ONLY. INFORM OCULUS OF ANY DISCREPANCIES FOR CLARIFICATION BEFORE PROCEEDING. UNLESS NOTED OTHERWISE THIS DRAWING IS NOT FOR CONSTRUCTION.
 © OCULUS 2017 All rights reserved.
 SERVICES SHOWN ON THIS DRAWING ARE APPROXIMATELY ONLY. THE EXACT LOCATION IS TO BE CONFIRMED ON SITE BY CONTRACTOR PRIOR TO COMMENCEMENT WORK.

KEY PLAN

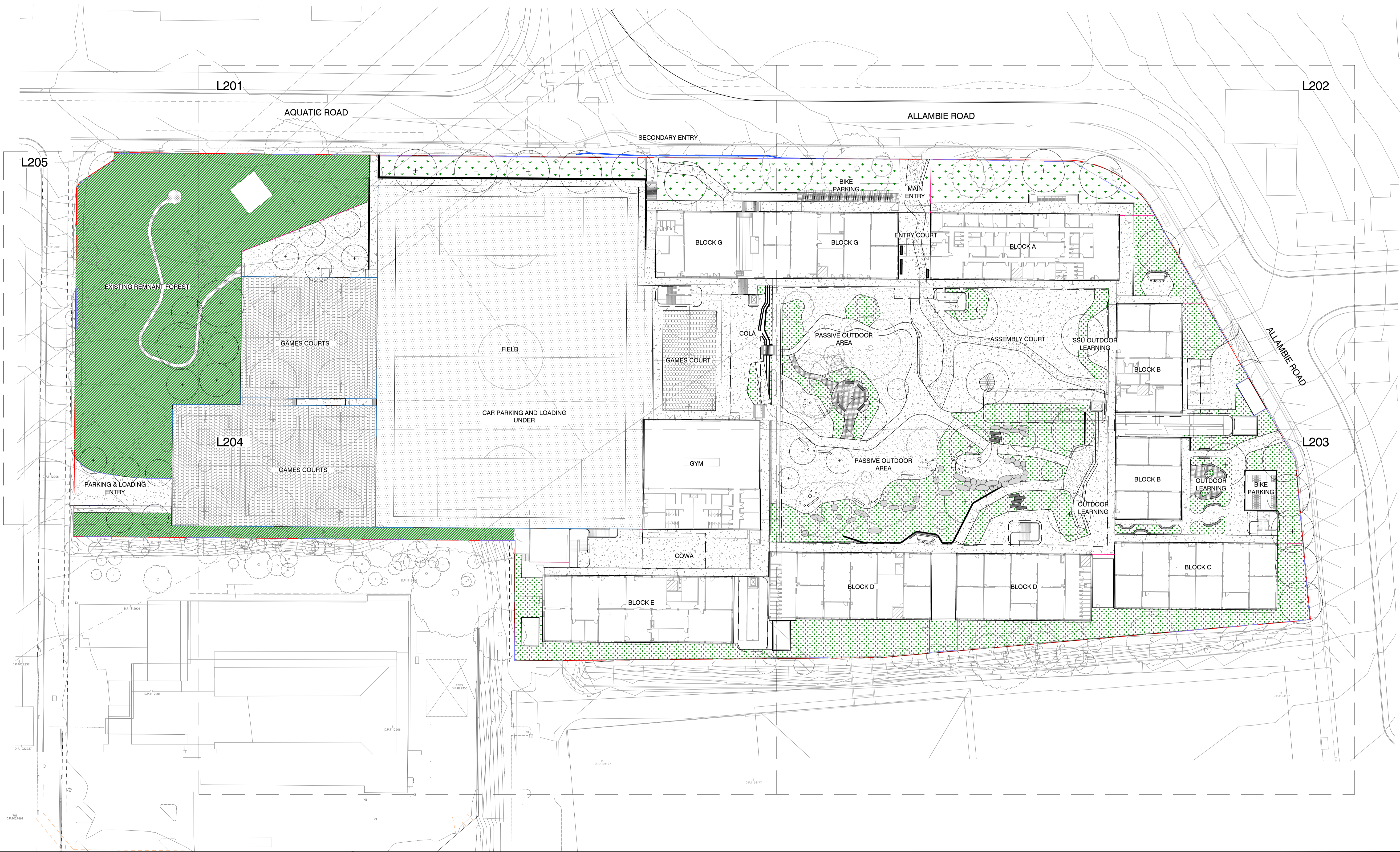
ISSUE	DATE	AMENDMENT	DRN	APRVD
A	16.09.22	SSDA	SL	AK

PROJECT	THE FOREST HIGH SCHOOL ALLAMBIE HEIGHTS
CLIENT	SINSW 259 GEORGE STREET, SYDNEY NSW 2000
ARCHITECT	ARCHITECTUS 19 MARTIN PL, SYDNEY NSW 2000

OCULUS
 level 1 / 5 wilson street, p.o. box 307, newtown, nsw 2042
 p 02.9557.5533 australia@oculus.info
 SYDNEY MELBOURNE WASHINGTON

STATUS	SSDA DEVELOPMENT APPLICATION
DRAWING SCALE	NORTH POINT
PROJECT No	S20-032
DRAWING No	L101
SHEET SIZE	A1
ISSUE	A

DRAWING
TREE RETENTION AND REMOVAL PLAN



NOTES
 THESE DRAWINGS ARE TO BE READ IN CONJUNCTION WITH ALL LANDSCAPE SCHEDULES AND TECHNICAL SPECIFICATION AND OTHER CONSULTANTS DRAWINGS. CHECK AND VERIFY ALL DIMENSIONS AND SITE CONDITIONS PRIOR TO THE COMMENCEMENT OF ANY WORK. DO NOT SCALE DRAWINGS - REFER TO FIGURED DIMENSIONS ONLY. INFORM OCULUS OF ANY DISCREPANCIES FOR CLARIFICATION BEFORE PROCEEDING. UNLESS NOTED OTHERWISE THIS DRAWING IS NOT FOR CONSTRUCTION.

© OCULUS 2017 All rights reserved

DIAL BEFORE YOU DIG
 www.1100.com.au

SERVICES SHOWN ON THIS DRAWING ARE APPROXIMATELY ONLY. THE EXACT LOCATION IS TO BE CONFIRMED ON SITE BY CONTRACTOR PRIOR TO COMMENCEMENT WORK.

FILE PATH: P:\SYDNEY\S20-032 THE FOREST HIGH SCHOOL\06 DOCUMENTATION\01 CAD DRAWINGS\02 SHEET SETS\ES\OC_S20-032_200_SURFACES FINISHES.DWG; DATE PLOTTED: 10/08/2022; PLOTTED BY: ALIA KHAN

KEY PLAN

ISSUE	DATE	AMENDMENT	DRN	APRVD
01	11.08.22	SCHEMATIC DESIGN	SL	AK

ISSUE	DATE	AMENDMENT	DRN	APRVD
01	11.08.22	SCHEMATIC DESIGN	SL	AK

OCULUS
 level 1 / 5 Wilson Street, p.o. box 307, Newtown, NSW 2042
 p 02.9557.5533 australia@oculus.info
 SYDNEY MELBOURNE WASHINGTON

PROJECT
 THE FOREST HIGH SCHOOL
 ALLAMBIE HEIGHTS

CLIENT
 SINSW
 259 GEORGE STREET, SYDNEY NSW 2000

ARCHITECT
 ARCHITECTUS
 19 MARTIN PL, SYDNEY NSW 2000

STATUS
 SCHEMATIC DESIGN
 FOR INFORMATION

DRAWING SCALE
 SCALE 1:500 @ A1

NORTH POINT

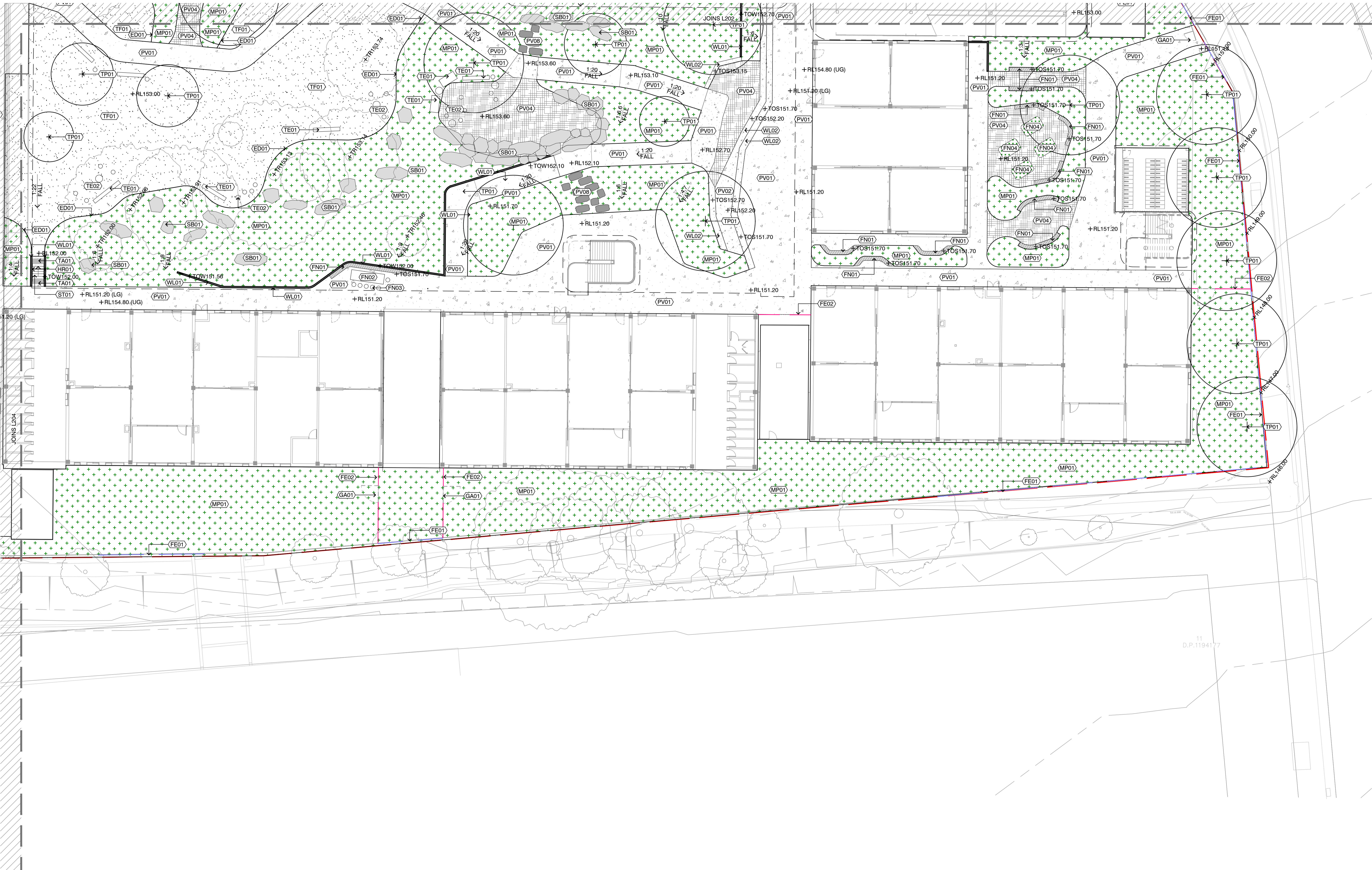
DRAWING
 GENERAL ARRANGEMENT PLAN
 OVERALL SITE

PROJECT No
 S20-032

DRAWING No
 L200

SHEET SIZE
 A1

ISSUE
 01



NOTES
 THESE DRAWINGS ARE TO BE READ IN CONJUNCTION WITH ALL LANDSCAPE SCHEMES AND TECHNICAL SPECIFICATION AND OTHER CONSULTANTS DRAWINGS. CHECK AND VERIFY ALL DIMENSIONS AND SITE CONDITIONS PRIOR TO THE COMMENCEMENT OF ANY WORK. DO NOT SCALE DRAWINGS - REFER TO FIGURED DIMENSIONS ONLY. INFORM OCULUS OF ANY DISCREPANCIES FOR CLARIFICATION BEFORE PROCEEDING. UNLESS NOTED OTHERWISE THIS DRAWING IS NOT FOR CONSTRUCTION.

© OCULUS 2017 All rights reserved

DIAL BEFORE YOU DIG
 www.1100.com.au

SERVICES SHOWN ON THIS DRAWING ARE APPROXIMATELY ONLY. THE EXACT LOCATION IS TO BE CONFIRMED ON SITE BY CONTRACTOR PRIOR TO COMMENCEMENT WORK.



ISSUE	DATE	AMENDMENT	DRN	APRVD
A	16.09.22	SSDA	SL	AK

OCULUS
 level 1 / 5 wilson street, p.o. box 307, newtown, nsw 2042
 p 02.9557.5533 australia@oculus.info
 SYDNEY MELBOURNE WASHINGTON

PROJECT
 THE FOREST HIGH SCHOOL
 ALLAMBIE HEIGHTS

CLIENT
 SINSW
 259 GEORGE STREET, SYDNEY NSW 2000

ARCHITECT
 ARCHITECTUS
 19 MARTIN PL, SYDNEY NSW 2000

STATUS
 SSDA
 DEVELOPMENT APPLICATION

DRAWING SCALE
 SCALE 1:200 @ A1

NORTH POINT

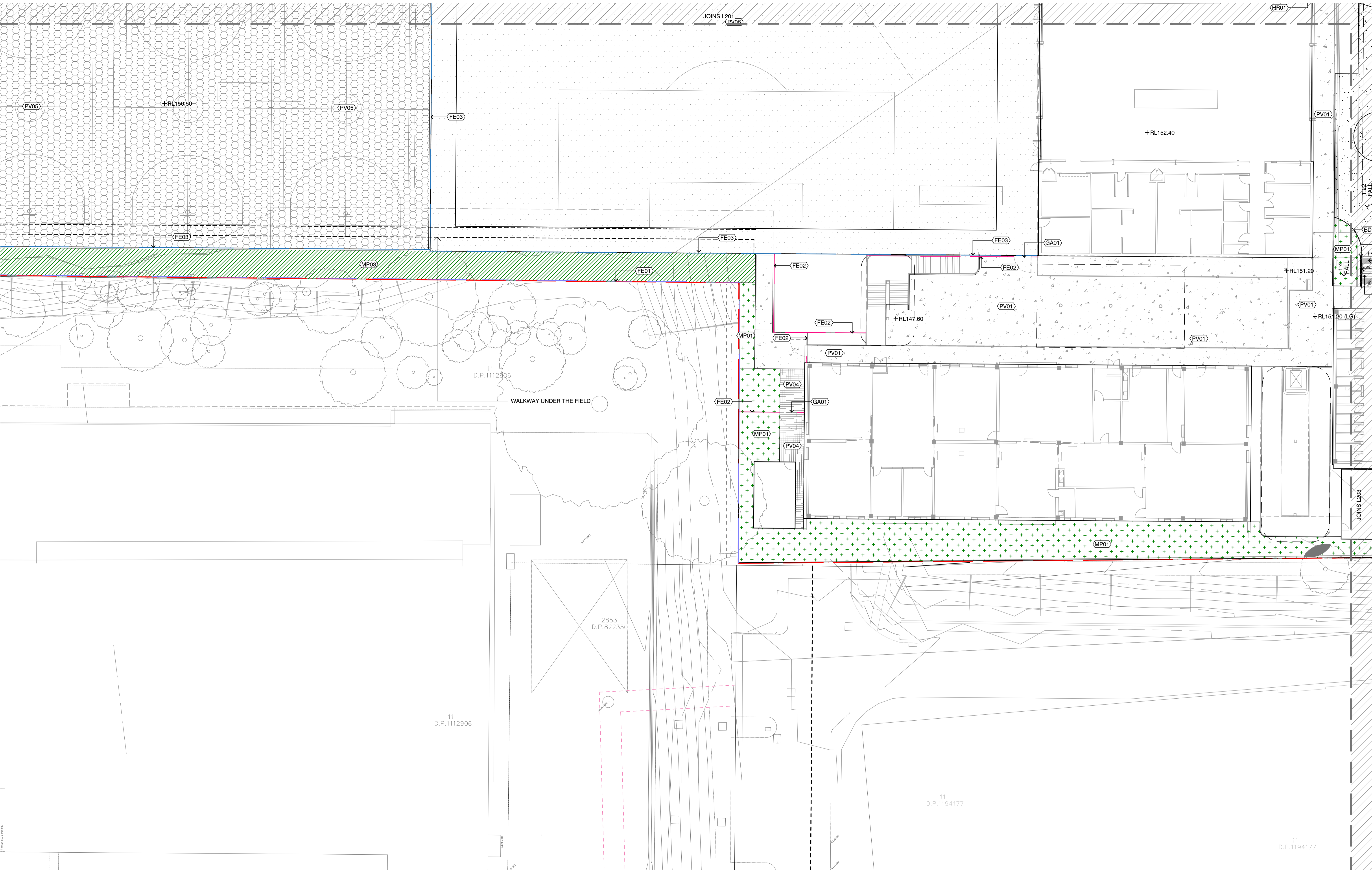
DRAWING
 GENERAL ARRANGEMENT PLAN
 SHEET 3 OF 5

PROJECT No
 S20-032

DRAWING No
 L203

SHEET SIZE
 A1

ISSUE
 A



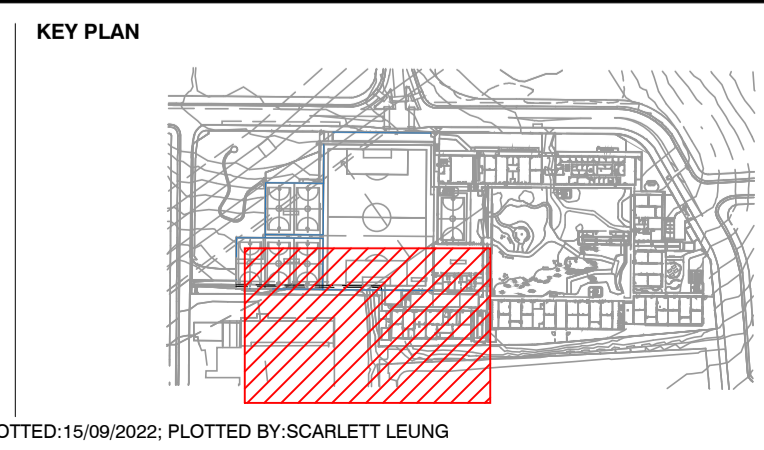
NOTES
 THESE DRAWINGS ARE TO BE READ IN CONJUNCTION WITH ALL LANDSCAPE SCHEDULES AND TECHNICAL SPECIFICATION AND OTHER CONSULTANTS DRAWINGS. CHECK AND VERIFY ALL DIMENSIONS AND SITE CONDITIONS PRIOR TO THE COMMENCEMENT OF ANY WORK. DO NOT SCALE DRAWINGS - REFER TO FIGURED DIMENSIONS ONLY. INFORM OCULUS OF ANY DISCREPANCIES FOR CLARIFICATION BEFORE PROCEEDING. UNLESS NOTED OTHERWISE THIS DRAWING IS NOT FOR CONSTRUCTION.

© OCULUS 2017 All rights reserved

DIAL BEFORE YOU DIG
 www.1100.com.au

SERVICES SHOWN ON THIS DRAWING ARE APPROXIMATELY ONLY. THE EXACT LOCATION IS TO BE CONFIRMED ON SITE BY CONTRACTOR PRIOR TO COMMENCEMENT WORK.

FILE PATH: P:\SYDNEY\S20-032 THE FOREST HIGH SCHOOL\08 DOCUMENTATION\01 CAD DRAWINGS\02 SHEET SETS\IES\OC_S20-032_200_SURFACES FINISHES.DWG; DATE PLOTTED: 15/09/2022; PLOTTED BY: SCARLETT LEUNG



ISSUE	DATE	AMENDMENT	DRN	APRVD
A	16.09.22	SSDA	SL	AK

OCULUS
 level 1 / 5 wilson street, p.o. box 307, newtown, nsw 2042
 p 02.9557.5533 australia@oculus.info
 SYDNEY MELBOURNE WASHINGTON

PROJECT
 THE FOREST HIGH SCHOOL
 ALLAMBIE HEIGHTS

CLIENT
 SINSW
 259 GEORGE STREET, SYDNEY NSW 2000

ARCHITECT
 ARCHITECTUS
 19 MARTIN PL, SYDNEY NSW 2000

STATUS
 SSDA
 DEVELOPMENT APPLICATION

DRAWING SCALE
 SCALE 1:200 @ A1

NORTH POINT

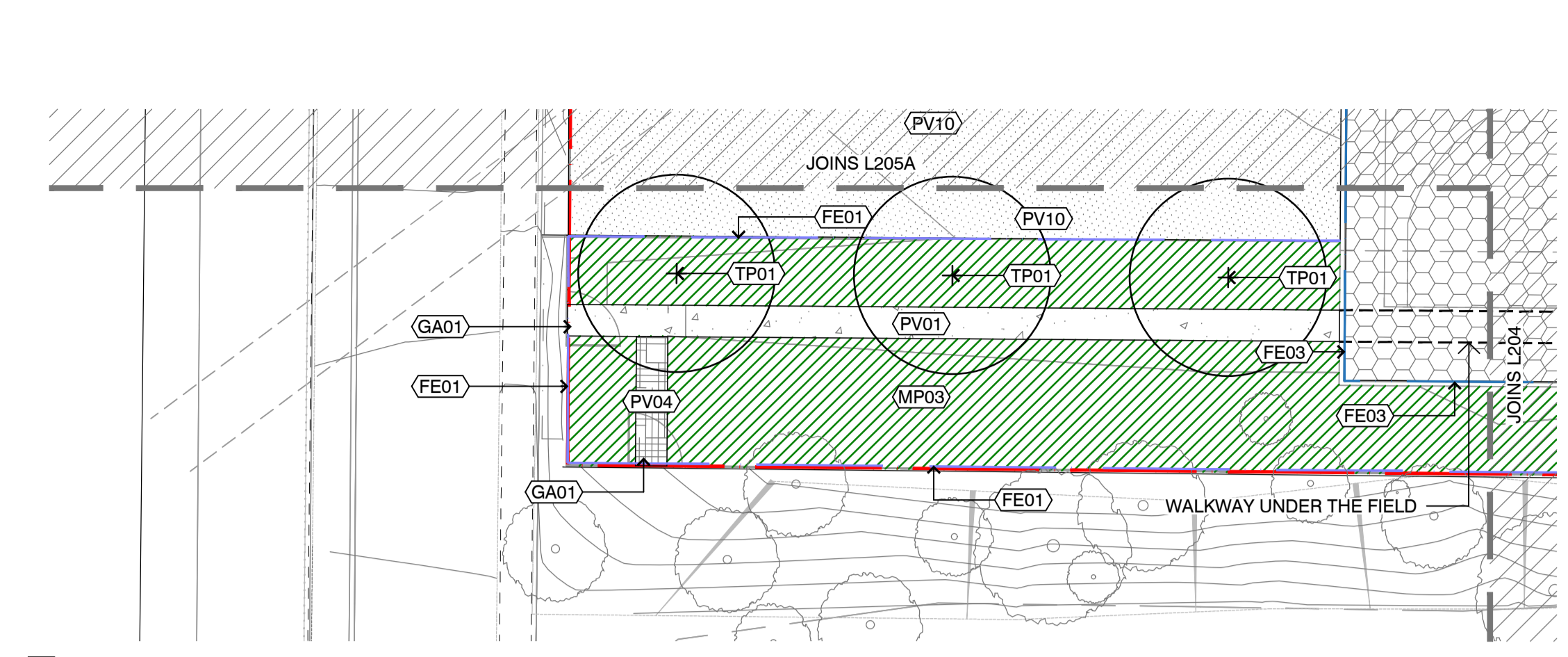
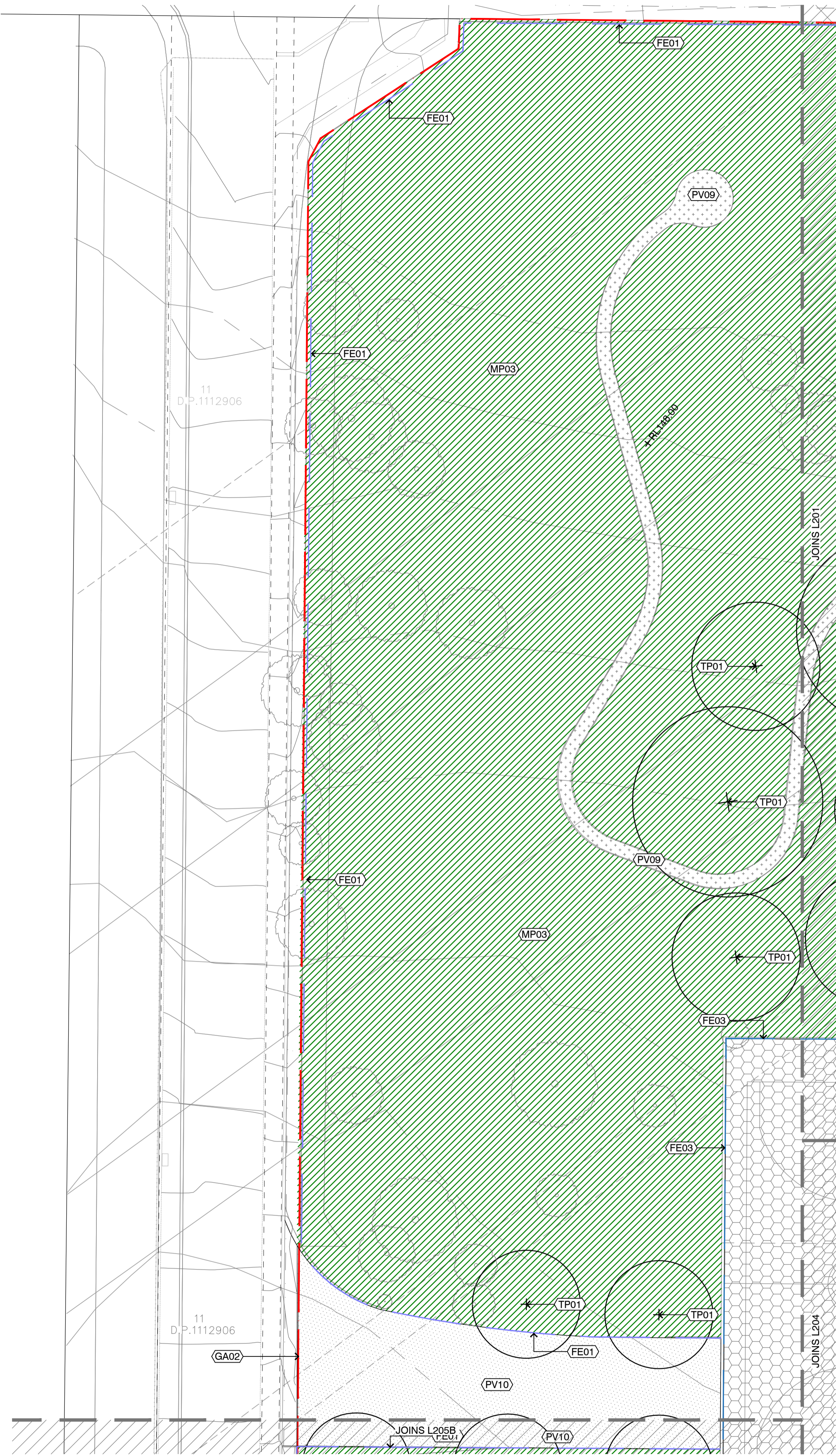
DRAWING
 GENERAL ARRANGEMENT PLAN
 SHEET 4 OF 5

PROJECT N°
 S20-032

DRAWING N°
 L204

SHEET SIZE
 A1

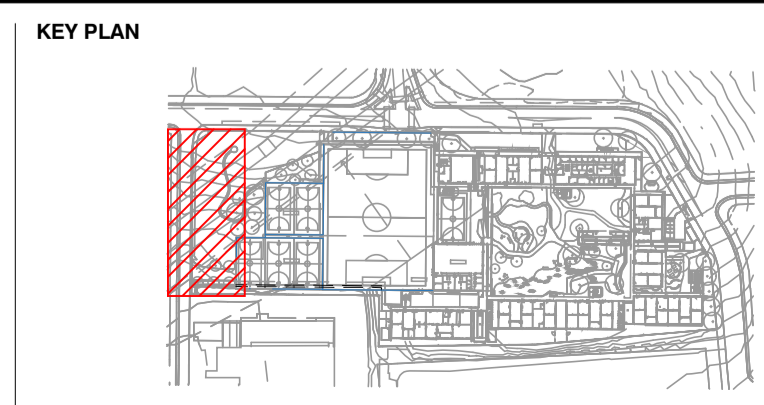
ISSUE
 A



02 GENERAL ARRANGEMENT PLAN - L205B
PLAN - 1:200 @ A1

01 GENERAL ARRANGEMENT PLAN - L205A
PLAN - 1:200 @ A1

NOTES
 THESE DRAWINGS ARE TO BE READ IN CONJUNCTION WITH ALL LANDSCAPE SCHEDULES AND TECHNICAL SPECIFICATION AND OTHER CONSULTANTS DRAWINGS. CHECK AND VERIFY ALL DIMENSIONS AND SITE CONDITIONS PRIOR TO THE COMMENCEMENT OF ANY WORK. DO NOT SCALE DRAWINGS - REFER TO FIGURED DIMENSIONS ONLY. INFORM OCULUS OF ANY DISCREPANCIES FOR CLARIFICATION BEFORE PROCEEDING. UNLESS NOTED OTHERWISE THIS DRAWING IS NOT FOR CONSTRUCTION.
 © OCULUS 2017 All rights reserved
 SERVICES SHOWN ON THIS DRAWING ARE APPROXIMATELY ONLY. THE EXACT LOCATION IS TO BE CONFIRMED ON SITE BY CONTRACTOR PRIOR TO COMMENCEMENT WORK.
DIAL BEFORE YOU DIG
 www.1100.com.au



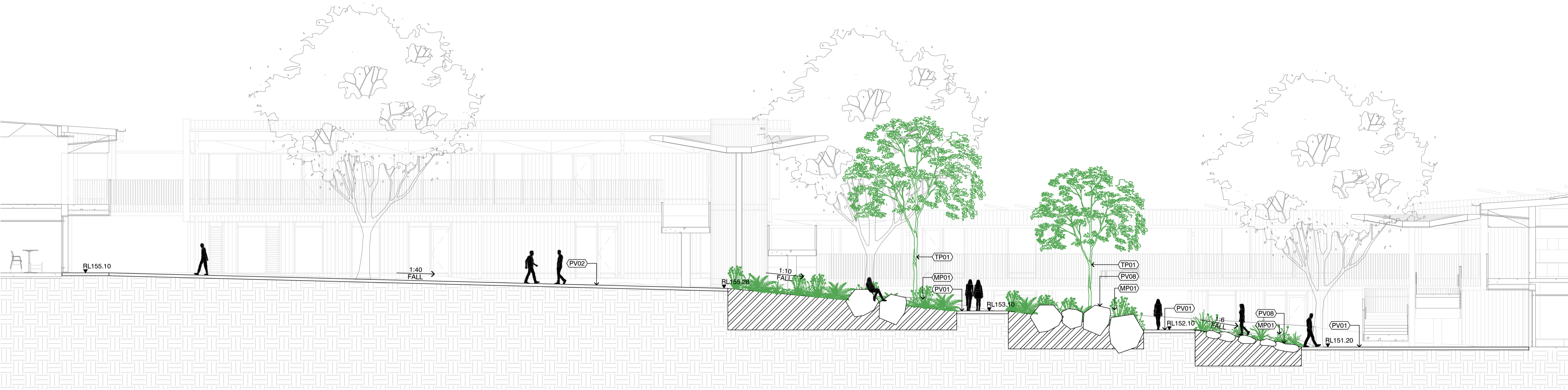
ISSUE	DATE	AMENDMENT	DRN	APRVD
A	16.09.22	SSDA	SL	AK

OCULUS
 level 1 / 5 wilson street, p.o. box 307, newtown, nsw 2042
 p 02.9557.5533 australia@oculus.info
 SYDNEY MELBOURNE WASHINGTON

PROJECT
 THE FOREST HIGH SCHOOL
 ALLAMBIE HEIGHTS
CLIENT
 SINSW
 259 GEORGE STREET, SYDNEY NSW 2000
ARCHITECT
 ARCHITECTUS
 19 MARTIN PL, SYDNEY NSW 2000

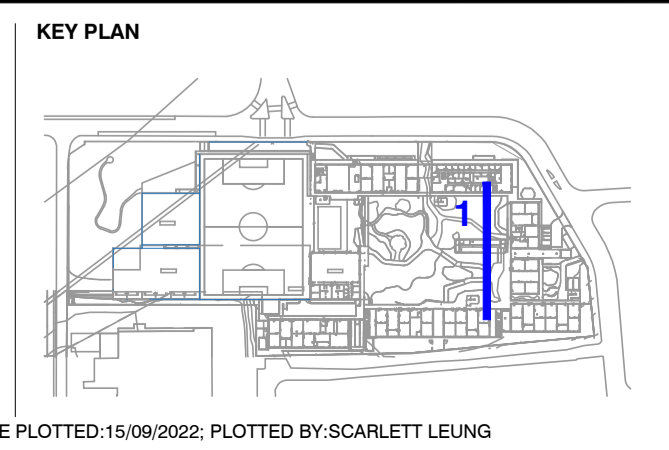
STATUS
 SSDA
 DEVELOPMENT APPLICATION
DRAWING SCALE
 SCALE 1:200 @ A1
 2 0 2 4 10m
NORTH POINT

DRAWING
 GENERAL ARRANGEMENT PLAN
 SHEET 5 OF 5
PROJECT N°
 S20-032
DRAWING N°
 L205
SHEET SIZE
 A1
ISSUE
 A



1 SECTION THROUGH ASSEMBLY COURTS AND PASSIVE LANDSCAPE
SCALE 1:100

NOTES
 THESE DRAWINGS ARE TO BE READ IN CONJUNCTION WITH ALL LANDSCAPE SCHEDULES AND TECHNICAL SPECIFICATION AND OTHER CONSULTANTS DRAWINGS. CHECK AND VERIFY ALL DIMENSIONS AND SITE CONDITIONS PRIOR TO THE COMMENCEMENT OF ANY WORK. DO NOT SCALE DRAWINGS - REFER TO FIGURED DIMENSIONS ONLY. INFORM OCULUS OF ANY DISCREPANCIES FOR CLARIFICATION BEFORE PROCEEDING. UNLESS NOTED OTHERWISE THIS DRAWING IS NOT FOR CONSTRUCTION.
 © OCULUS 2017 All rights reserved
 SERVICES SHOWN ON THIS DRAWING ARE APPROXIMATELY ONLY. THE EXACT LOCATION IS TO BE CONFIRMED ON SITE BY CONTRACTOR PRIOR TO COMMENCEMENT WORK.
DIAL BEFORE YOU DIG
 www.1100.com.au



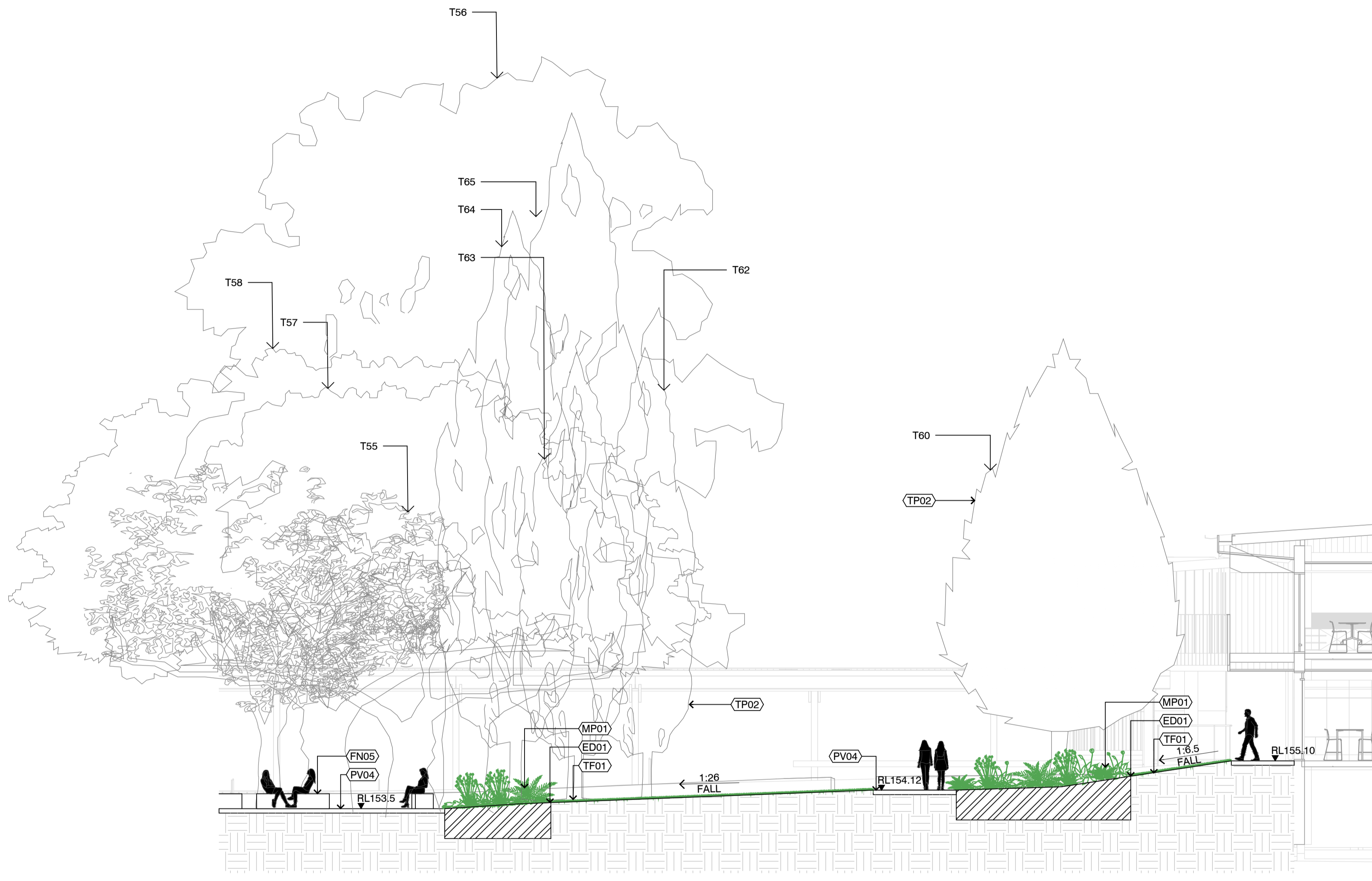
ISSUE	DATE	AMENDMENT	DRN	APRVD
A	16.09.22	SSDA	RB/SL	AK

OCULUS
 level 1 / 5 wilson street, p.o. box 307, newtown, nsw 2042
 p 02.9557.5533 australia@oculus.info
 SYDNEY MELBOURNE WASHINGTON

PROJECT
 THE FOREST HIGH SCHOOL
 ALLAMBIE HEIGHTS
CLIENT
 SINSW
 259 GEORGE STREET, SYDNEY NSW 2000
ARCHITECT
 ARCHITECTUS
 19 MARTIN PL, SYDNEY NSW 2000

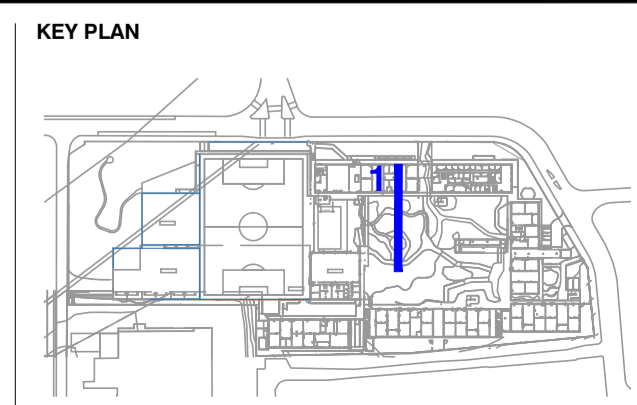
STATUS
 SSDA
 DEVELOPMENT APPLICATION
DRAWING SCALE
 SCALE 1:100 @ A1
 1 0 1 2 5m
NORTH POINT

DRAWING SECTIONS & ELEVATIONS	
PROJECT N° S20-032	SHEET SIZE A1
DRAWING N° L701	ISSUE A



1 SECTION THROUGH PASSIVE LANDSCAPE AND EXISTING TREES
SCALE 1:100

NOTES
 THESE DRAWINGS ARE TO BE READ IN CONJUNCTION WITH ALL LANDSCAPE SCHEDULES AND TECHNICAL SPECIFICATION AND OTHER CONSULTANTS DRAWINGS. CHECK AND VERIFY ALL DIMENSIONS AND SITE CONDITIONS PRIOR TO THE COMMENCEMENT OF ANY WORK. DO NOT SCALE DRAWINGS - REFER TO FIGURED DIMENSIONS ONLY. INFORM OCULUS OF ANY DISCREPANCIES FOR CLARIFICATION BEFORE PROCEEDING. UNLESS NOTED OTHERWISE THIS DRAWING IS NOT FOR CONSTRUCTION.
 © OCULUS 2017. All rights reserved.
 SERVICES SHOWN ON THIS DRAWING ARE APPROXIMATELY ONLY. THE EXACT LOCATION IS TO BE CONFIRMED ON SITE BY CONTRACTOR PRIOR TO COMMENCEMENT WORK.
DIAL BEFORE YOU DIG
 www.1100.com.au



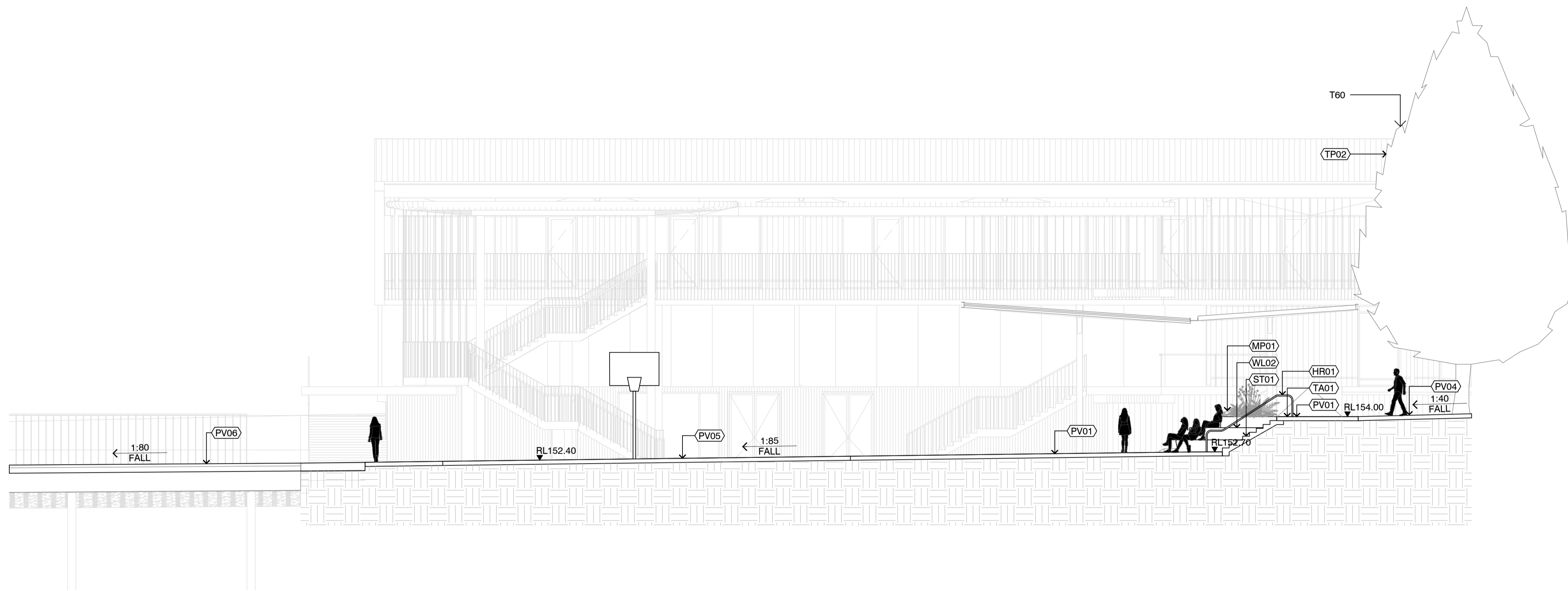
ISSUE	DATE	AMENDMENT	DRN	APRVD
A	16.09.22	SSDA	RB/SL	AK

OCULUS
 level 1 / 5 wilson street, p.o. box 307, newtown, nsw 2042
 p 02.9557.5533 australia@oculus.info
 SYDNEY MELBOURNE WASHINGTON

PROJECT
 THE FOREST HIGH SCHOOL
 ALLAMBIE HEIGHTS
CLIENT
 SINSW
 259 GEORGE STREET, SYDNEY NSW 2000
ARCHITECT
 ARCHITECTUS
 19 MARTIN PL, SYDNEY NSW 2000

STATUS
 SSDA
 DEVELOPMENT APPLICATION
DRAWING SCALE
 SCALE 1:100 @ A1
 1 0 1 2 5m
NORTH POINT

DRAWING SECTIONS & ELEVATIONS	
PROJECT N° S20-032	SHEET SIZE A1
DRAWING N° L702	ISSUE A

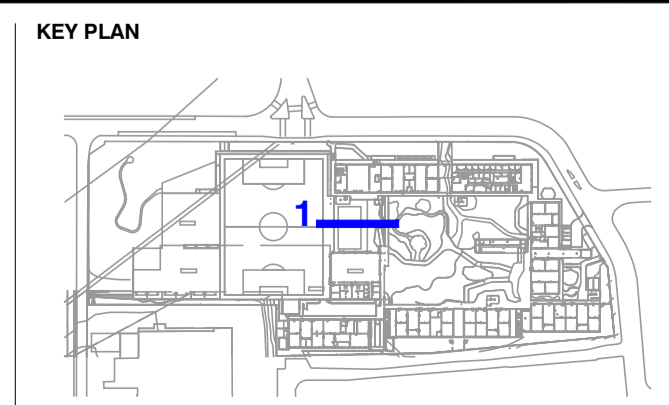


1 SECTION THROUGH FIELD EDGE AND COLA
SCALE 1:100

NOTES
 THESE DRAWINGS ARE TO BE READ IN CONJUNCTION WITH ALL LANDSCAPE SCHEDULES AND TECHNICAL SPECIFICATION AND OTHER CONSULTANTS DRAWINGS. CHECK AND VERIFY ALL DIMENSIONS AND SITE CONDITIONS PRIOR TO THE COMMENCEMENT OF ANY WORK. DO NOT SCALE DRAWINGS - REFER TO FIGURED DIMENSIONS ONLY. INFORM OCULUS OF ANY DISCREPANCIES FOR CLARIFICATION BEFORE PROCEEDING. UNLESS NOTED OTHERWISE THIS DRAWING IS NOT FOR CONSTRUCTION.

© OCULUS 2017 All rights reserved
 SERVICES SHOWN ON THIS DRAWING ARE APPROXIMATELY ONLY. THE EXACT LOCATION IS TO BE CONFIRMED ON SITE BY CONTRACTOR PRIOR TO COMMENCEMENT WORK.

FILE PATH: P:\SYDNEY\S20-032 THE FOREST HIGH SCHOOL\08 DOCUMENTATION\01 CAD DRAWINGS\02 SHEET SETS\IES\OC_S20-032_700_SECTIONS & ELEVATIONS.DWG, DATE PLOTTED: 15/09/2022; PLOTTED BY: SCARLETT LEUNG



ISSUE	DATE	AMENDMENT	DRN	APRVD
A	16.09.22	SSDA	RB/SL	AK

OCULUS
 level 1 / 5 wilson street, p.o. box 307, newtown, nsw 2042
 p 02.9557.5533 australia@oculus.info
 SYDNEY MELBOURNE WASHINGTON

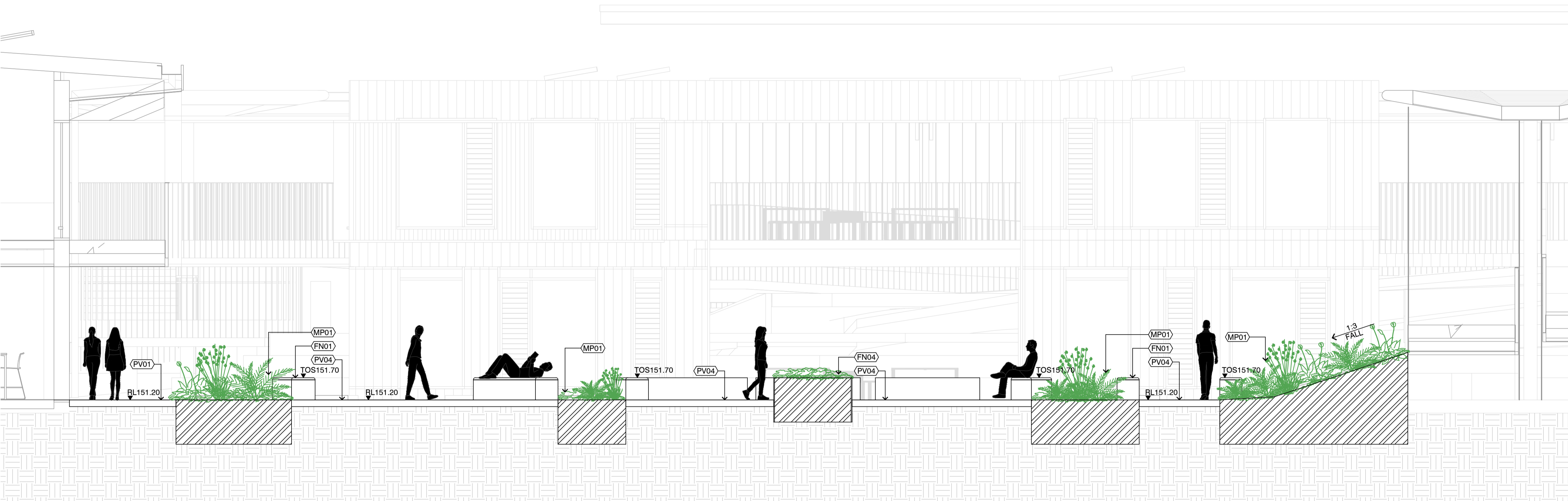
PROJECT
 THE FOREST HIGH SCHOOL
 ALLAMBIE HEIGHTS
CLIENT
 SINSW
 259 GEORGE STREET, SYDNEY NSW 2000
ARCHITECT
 ARCHITECTUS
 19 MARTIN PL, SYDNEY NSW 2000

STATUS
 SSDA
 DEVELOPMENT APPLICATION


DRAWING SCALE
 SCALE 1:100 @ A1

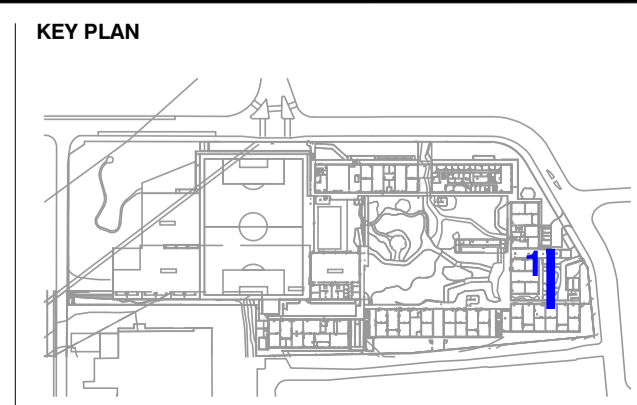
NORTH POINT

DRAWING SECTIONS & ELEVATIONS	
PROJECT N° S20-032	SHEET SIZE A1
DRAWING N° L703	ISSUE A



1 SECTION THROUGH EASTERN OUTDOOR LEARNING COURTYARD
SCALE 1:50

NOTES
 THESE DRAWINGS ARE TO BE READ IN CONJUNCTION WITH ALL LANDSCAPE SCHEDULES AND TECHNICAL SPECIFICATION AND OTHER CONSULTANTS DRAWINGS. CHECK AND VERIFY ALL DIMENSIONS AND SITE CONDITIONS PRIOR TO THE COMMENCEMENT OF ANY WORK. DO NOT SCALE DRAWINGS - REFER TO FIGURED DIMENSIONS ONLY. INFORM OCULUS OF ANY DISCREPANCIES FOR CLARIFICATION BEFORE PROCEEDING. UNLESS NOTED OTHERWISE THIS DRAWING IS NOT FOR CONSTRUCTION.
 © OCULUS 2017 All rights reserved
 SERVICES SHOWN ON THIS DRAWING ARE APPROXIMATELY ONLY. THE EXACT LOCATION IS TO BE CONFIRMED ON SITE BY CONTRACTOR PRIOR TO COMMENCEMENT WORK.
 www.1100.com.au



ISSUE	DATE	AMENDMENT	DRN	APRVD
A	16.09.22	SSDA	RB/SL	AK

OCULUS
 level 1 / 5 wilson street, p.o. box 307, newtown, nsw 2042
 p 02.9557.5533 australia@oculus.info
 SYDNEY MELBOURNE WASHINGTON

PROJECT
 THE FOREST HIGH SCHOOL
 ALLAMBIE HEIGHTS
CLIENT
 SINSW
 259 GEORGE STREET, SYDNEY NSW 2000
ARCHITECT
 ARCHITECTUS
 19 MARTIN PL, SYDNEY NSW 2000

STATUS
 SSDA
 DEVELOPMENT APPLICATION
DRAWING SCALE
 SCALE 1:50 @ A1
 0.5 0 0.5 1 2.5m
NORTH POINT

DRAWING
 SECTIONS & ELEVATIONS
PROJECT N°
 S20-032
DRAWING N°
 L704
SHEET SIZE
 A1
ISSUE
 A