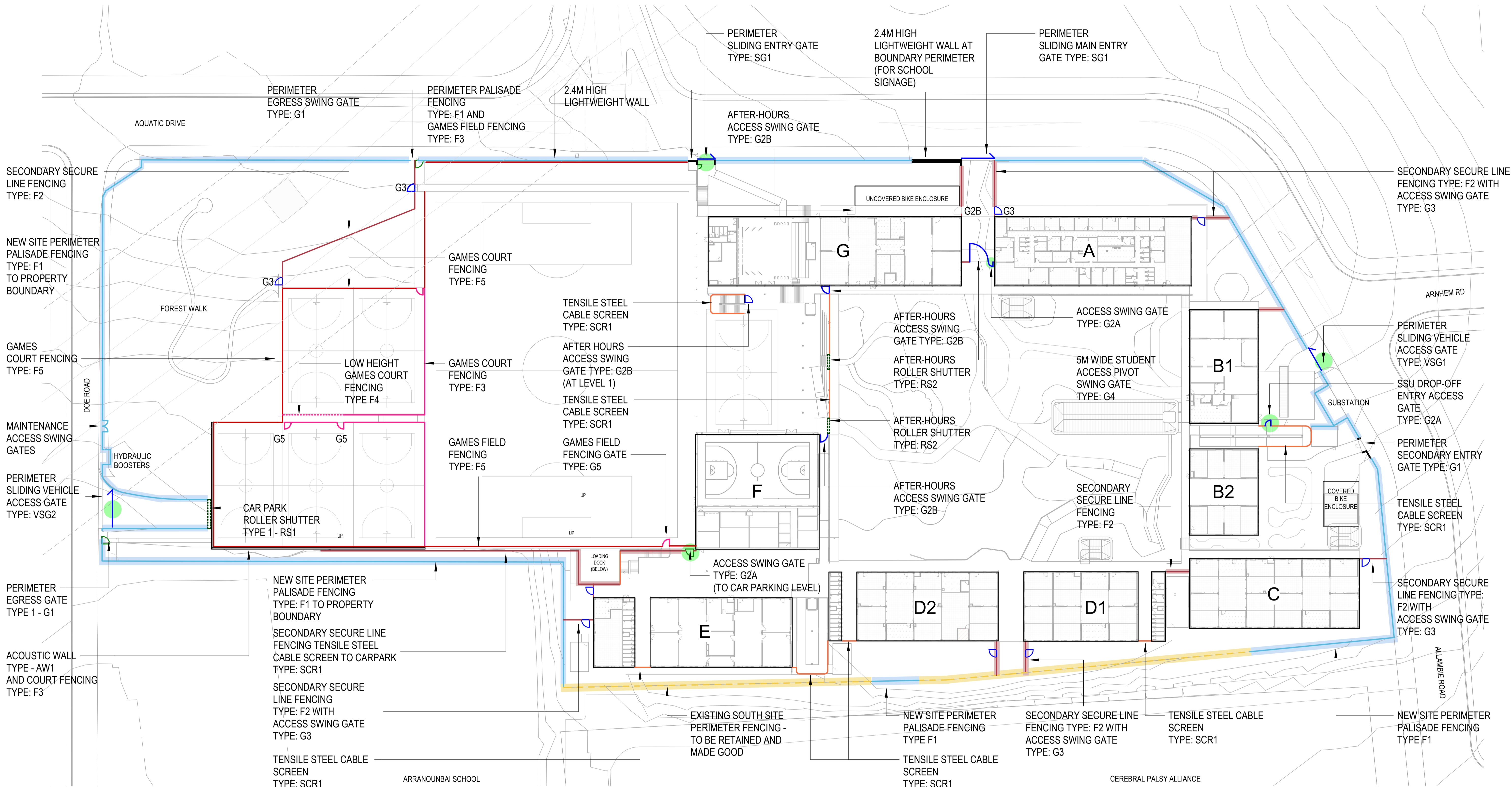




issue	amendment	date
A	SSDA	19/08/2022
B	SSDA	09/09/2022
C	SSDA	28/09/2022

THE FOREST HIGH SCHOOL ARCHITECTURAL DRAWINGS

DRAWING REGISTER - SD (SSDA)				
SHEET NUMBER	SHEET NAME	REV	REVISION DESCRIPTION	REVISION DATE
SSDA				
SSDA-0000	COVER SHEET - SSDA	C	SSDA	28/09/2022
SSDA-0504	DEMOLITION PLAN	B	SSDA	09/09/2022
SSDA-0701	AREAS - LOWER GROUND PLAN 2	B	SSDA	09/09/2022
SSDA-0702	AREAS - LOWER GROUND PLAN 1	B	SSDA	09/09/2022
SSDA-0703	AREAS - GROUND PLAN	B	SSDA	09/09/2022
SSDA-0704	AREAS - LEVEL 1 PLAN	B	SSDA	09/09/2022
SSDA-1001	SITE PLAN	B	SSDA	09/09/2022
SSDA-1002	LOWER GROUND PLAN 2	B	SSDA	09/09/2022
SSDA-1003	LOWER GROUND PLAN 1	B	SSDA	09/09/2022
SSDA-1004	GROUND FLOOR PLAN	B	SSDA	09/09/2022
SSDA-1005	LEVEL 1 PLAN	B	SSDA	09/09/2022
SSDA-1006	ROOF PLAN	B	SSDA	09/09/2022
SSDA-2001	SITE ELEVATIONS 1 (NORTH AND SOUTH)	C	SSDA	28/09/2022
SSDA-2002	SITE ELEVATIONS 2 (EAST AND WEST)	C	SSDA	28/09/2022
SSDA-2511	SITE SECTIONS	C	SSDA	28/09/2022
SSDA-2512	SITE SECTIONS	A	SSDA	28/09/2022
SSDA-9301	FENCING LOCATION PLAN	C	SSDA	28/09/2022
SSDA-9401	SIGNAGE LOCATION PLAN	C	SSDA	28/09/2022
SSDA-9402	SIGNAGE LOCATION ELEVATIONS	B	SSDA	09/09/2022
Grand total: 19				



LEGEND		PRINT DRAWING IN COLOUR	
	TYPE F1: 2.15M HIGH PRIMARY SECURE LINE SCHOOL PERIMETER PALISADE FENCING (TO EFSG REQ)		TYPE G1: 2.15M HIGH PRIMARY SECURE LINE SCHOOL PERIMETER PALISADE ENTRY SWING GATE WITH INTERCOM
	TYPE F2: SECONDARY SECURE LINE 2.15M HIGH FENCING		TYPE G1: 2.15M HIGH PRIMARY SECURE LINE SCHOOL PERIMETER PALISADE ENTRY SWING GATE
	TYPE F3: GAMES COURT / GAMES FIELD 2.4M HIGH BARRIER / FENCING		TYPE G2A: SECONDARY SECURE LINE 2.15M HIGH GATE WITH INTERCOM
	TYPE F4: GAMES COURT 1.2M HIGH BARRIER / FENCING		TYPE G2B: SECONDARY SECURE LINE 2.15M HIGH AFTER-HOURS ACCESS GATE
	TYPE F5: GAMES COURT 3.6M HIGH BARRIER / FENCING		TYPE G3: SECONDARY SECURE LINE 2.15M HIGH GATE (BOH ACCESS GATE)
	TYPE SCR1: SECONDARY SECURE LINE VERTICAL FULL HEIGHT TENSILE TENSION STEEL CABLE SCREEN		TYPE G4: SECONDARY SECURE LINE 2.15M HIGH X 5.0M APPROX WIDE PIVOT GATE
	EXISTING: EXISTING FENCING RETAINED AND MADE GOOD		TYPE G5: GAMES COURT FENCING GATE
			TYPE SG1: 2.15M HIGH PRIMARY SECURE LINE SCHOOL PERIMETER SLIDING ENTRY GATE
			TYPE VSG1 & 2: PRIMARY SECURE LINE 2.15M VEHICLE SLIDING GATE WITH INTERCOM
			TYPE RS1: MOTORISED CAR-PARKING ROLLER SHUTTER WITH INTERCOM, FRL TO BUSH FIRE CONSULT REQ.
			TYPE RS2: SECONDARY SECURE LINE AFTER-HOURS, MOTORISED, SS. WOVEN MESH ROLLER SHUTTER OR SIMILAR
			AW1 - 2.1M HIGH LAPPED & CAPPED TIMBER (OR SIMILAR) ACOUSTIC BARRIER WALL WITH RW20 ACOUSTIC RATING.
			2.4M LIGHTWEIGHT WALL AT PERIMETER

issue	amendment	date
A	SSDA	19/08/2022
B	SSDA	09/09/2022
C	SSDA	28/09/2022

architectus™
 Architectus Australia Pty Ltd is the owner of the copyright subsisting in these drawings, plans, designs and specifications. They must not be used, reproduced or copied, in whole or in part, nor may the information, ideas and concepts therein contained (which are confidential to Architectus Australia Pty Ltd) be disclosed to any person without the prior written consent of that company.

Nominated Architect
 Ray Brown, NSWARB 6359

Do not scale drawings. Verify all dimensions on site

architectus™
 Adelaide Brisbane Melbourne Sydney Perth
 Architectus Sydney
 Level 18 MLC Centre
 18 Martin Place
 Sydney NSW 2000
 T (61 2) 8252 8400
 F (61 2) 8252 8600
 sydney@architectus.com.au
 ABN 90 131 245 684

project: THE FOREST HIGH SCHOOL
 drawing: FENCING LOCATION PLAN
 checked: SW scale: 1 : 500@A1
 drawn: AD KG JL IT SL SW project no: 200420.01
 drawing no: **SSDA-9301** issue: **C**
 31/10/2022 5:19:29 PM

