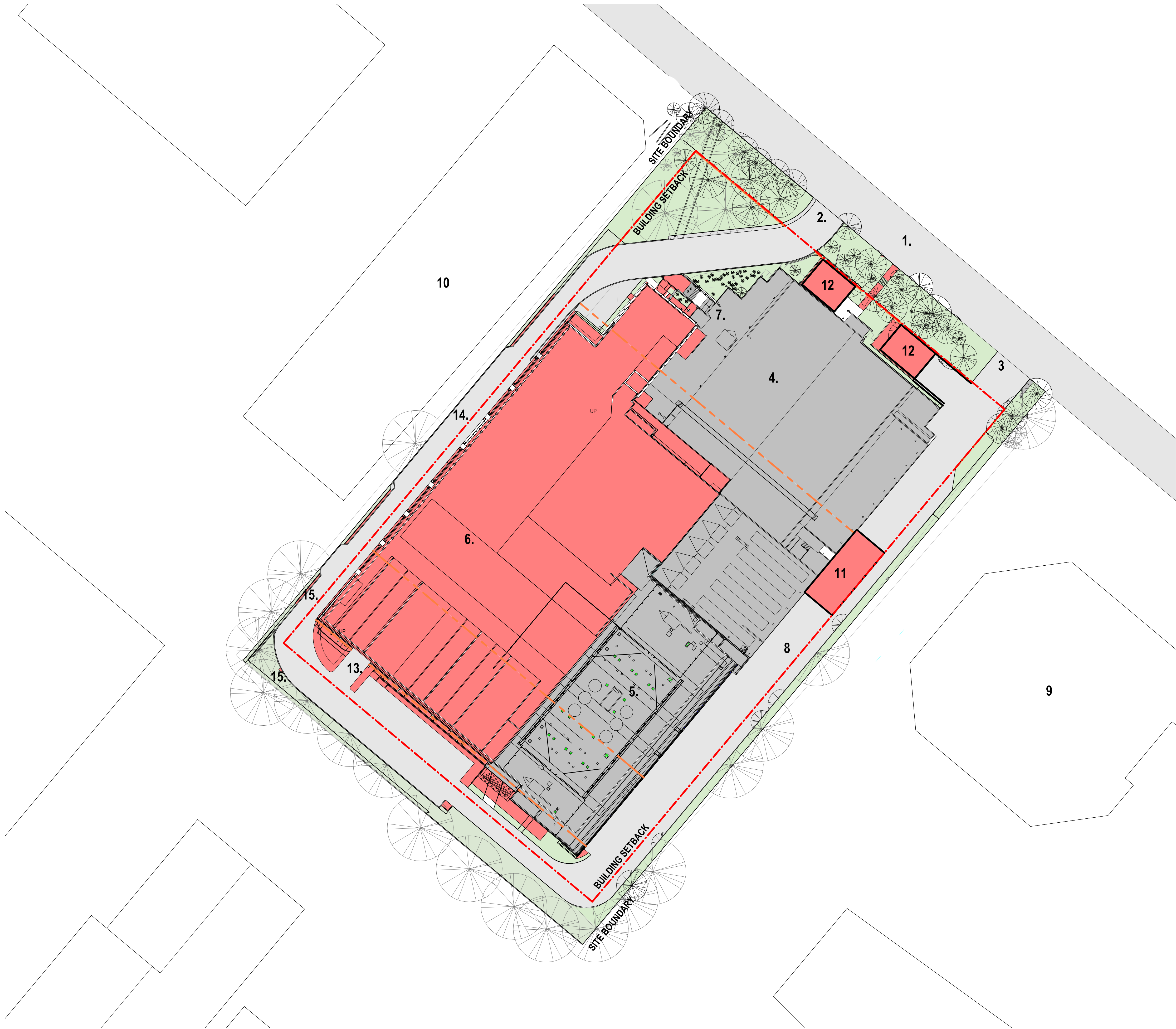


IC3 SUPER WEST

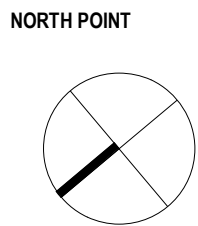
DRAWING LIST - SSDA PACKAGE		
Sheet Number	Sheet Name	Current Revision
1001	COVER PAGE	B
1301	SITE PLAN	G
1302	LOCATION PLAN	F
2001	GFA - SHEET 1	G
2002	GFA - SHEET 2	G
2003	GFA - SHEET 3	C
2101	GENERAL ARRANGEMENT - GROUND LEVEL	E
2102	GENERAL ARRANGEMENT - LEVEL 01	E
2102.1	GENERAL ARRANGEMENT - LEVEL 01B	C
2103	GENERAL ARRANGEMENT - LEVEL 02	E
2104	GENERAL ARRANGEMENT - LEVEL 03	E
2105	GENERAL ARRANGEMENT - LEVEL 04	E
2106	GENERAL ARRANGEMENT - LEVEL 05	E
2107	GENERAL ARRANGEMENT - LEVEL 06	E
2108	GENERAL ARRANGEMENT - LEVEL 06 (ROOF LEVEL)	D
3001	ELEVATIONS - OVERALL	A
3002	ELEVATIONS - OVERALL	A
3011	NORTH ELEVATION	E
3012	WEST ELEVATION	E
3013	SOUTH ELEVATION	E
3014	EAST ELEVATION	D
3101	SECTION - 1	B
3102	SECTION - 2	B
3103	SECTION - 3	B
3104	SECTION - 4	B
3105	SECTION - 5	B
6001	3D PERSPECTIVE - 1	E
8010	INDICATIVE VIEW OF ENTRY	C
8011	INDICATIVE VIEWS FROM TALAVERA RD	C
8051	SHADOW DIAGRAM - SPRING-SUMMER	D
8052	SHADOW DIAGRAM - AUTUMN-WINTER	D
Total sheets: 31		



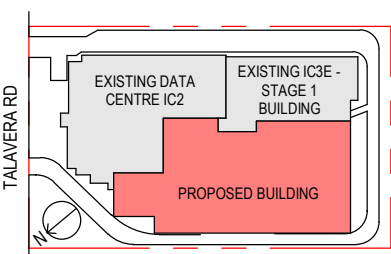
- LEGEND
- 1. TALAVERA ROAD
 - 2. EXISTING ACCESS TO SITE (MAIN ENTRY)
 - 3. EXISTING ACCESS TO SITE (SECONDARY ENTRY)
 - 4. EXISTING IC2 BUILDING
 - 5. EXISTING IC3E BUILDING
 - 6. PROPOSED IC3W BUILDING
 - 7. BUILDING ENTRY
 - 8. PERIMETER ROAD
 - 9. EXISTING 7 STOREY COMMERCIAL BUILDING
 - 10. EXISTING 2 STOREY CAR PARK
 - 11. EAST LOADING BAY UPGRADE
 - 12. PROPOSED PLANT
 - 13. CAR PARK ENTRY / EXIT
 - 14. DELIVERIES ENTRY / EXIT
 - 15. BOUNDARY RETAINING WALL
- SITE BOUNDARY
 - LEP SET BACK
 - TALAVERA ROAD
 - PROPOSED BUILDING
 - EXISTING BUILDINGS

REV	DESCRIPTION
G	REVISED SSDA ISSUE
F	REVISED SSDA ISSUE
E	REVISED SSDA ISSUE
D	REVISED SSDA ISSUE
C	REVISED SSDA ISSUE
B	REVISED SSDA ISSUE
A	ISSUED FOR SSD APPLICATION

DATE
26/10/22
20/10/2022
08/08/22
11/04/22
25/03/22
25/02/22
21/10/21



KEY PLAN



PROJECT MANAGER



CLIENT



ARCHITECT



Level 24, 25 Martin Place, Sydney NSW 2000, Australia
+61 2 9556 2666 | hdrinc.com
HDR Pty. Limited ABN 76 158 075 220 trading as HDR

Nominated Architect: Cate Cowlishaw 10786 (NSW)

PROJECT

IC3 SUPER WEST
17-23 TALAVERA RD, MACQUARIE
PARK

DRAWING TITLE

SITE PLAN

PROJECT STATUS
SSDA RESUBMISSION

PROJECT NUMBER

10301489

SCALE
1 : 500 @ A1

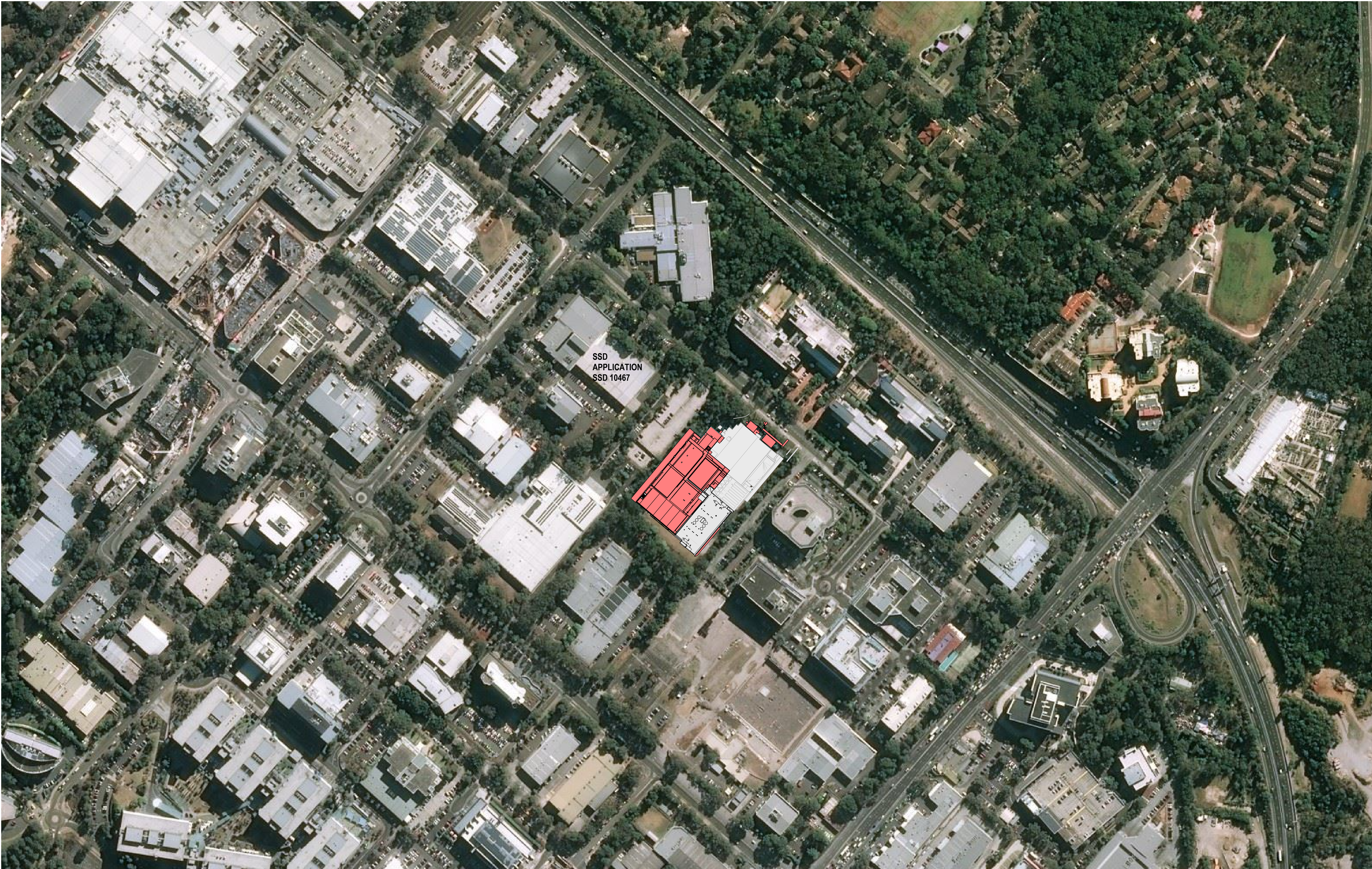
DRAWING NUMBER

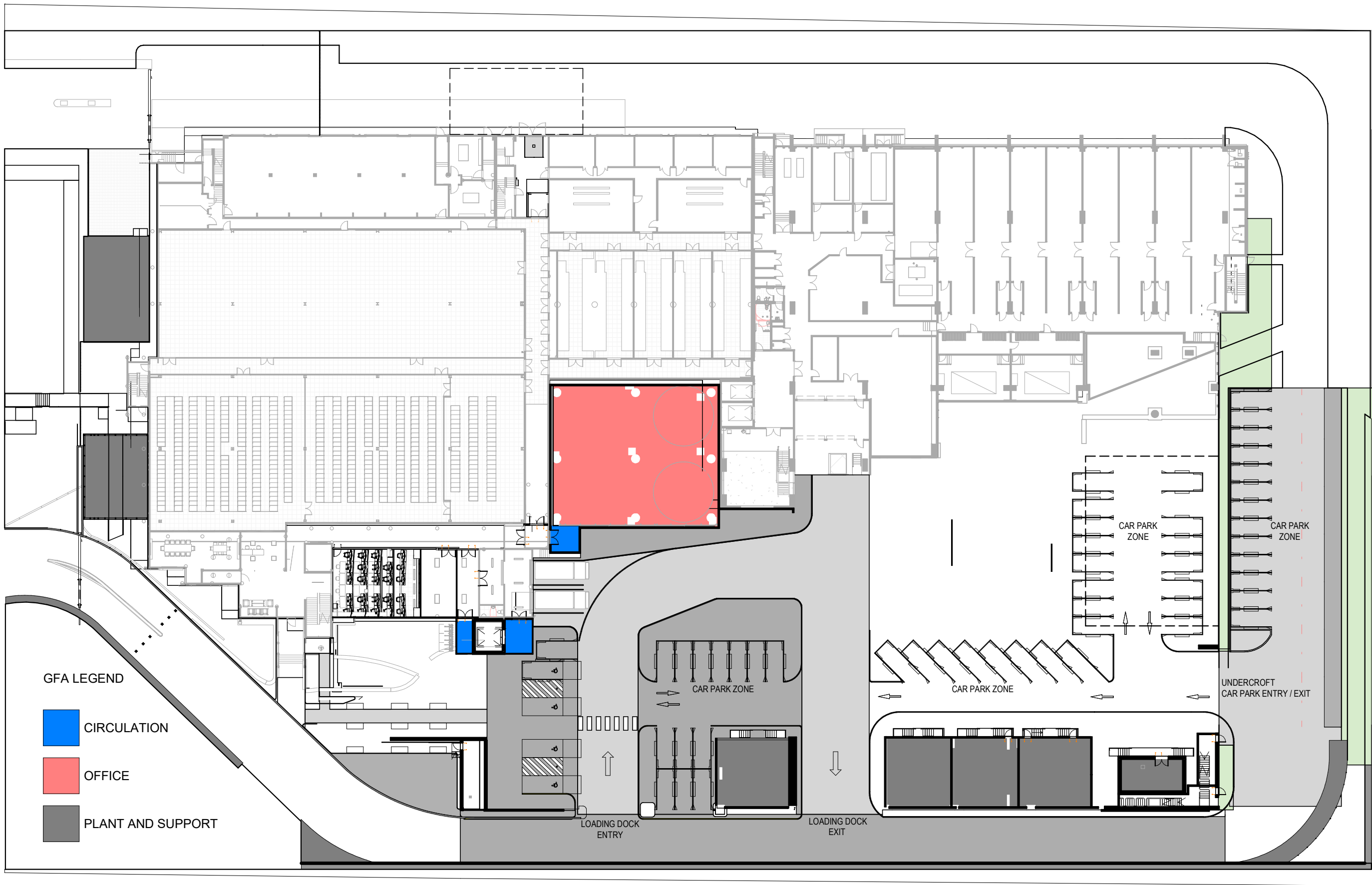
A1301

ISSUE

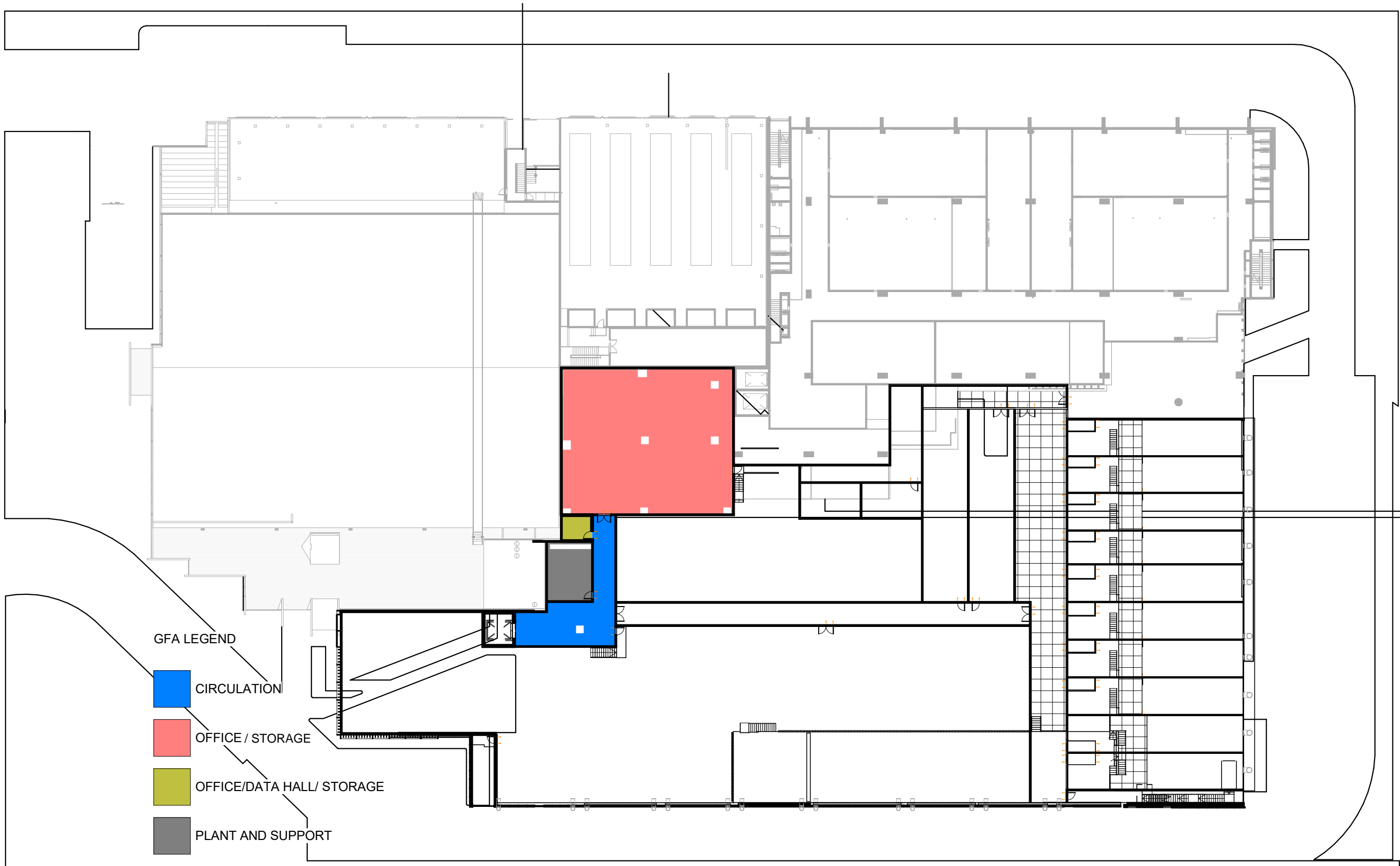
G

THIS DOCUMENT IS THE COPYRIGHT OF HDR.
ALL INFORMATION ILLUSTRATED ON THIS DOCUMENT IS TO BE CHECKED AND VERIFIED ON SITE
IN THE EVENT OF DISCREPANCIES REFER TO ARCHITECT PRIOR TO COMMENCEMENT OF THE
WORK. DO NOT SCALE DRAWINGS MANUALLY OR ELECTRONICALLY.

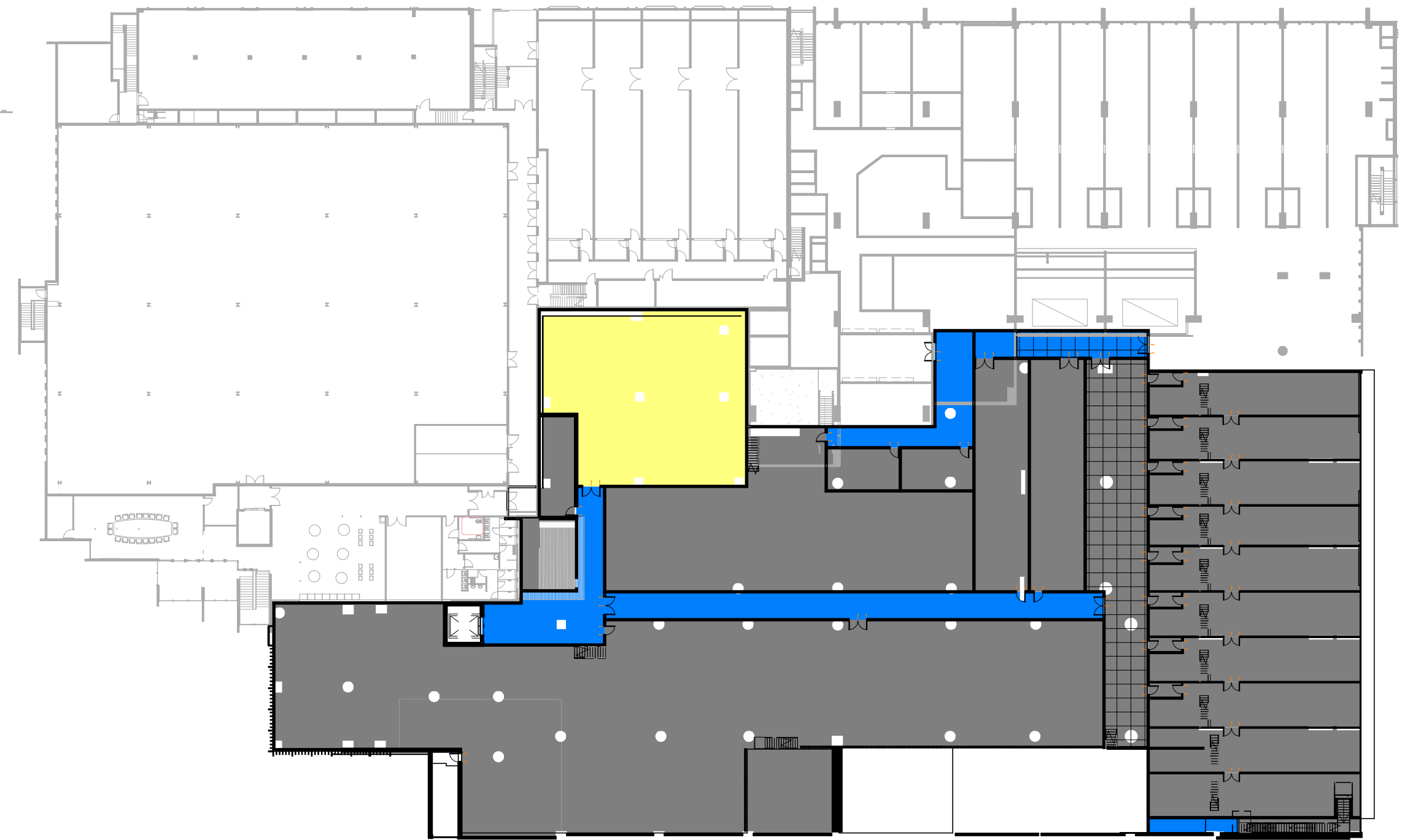




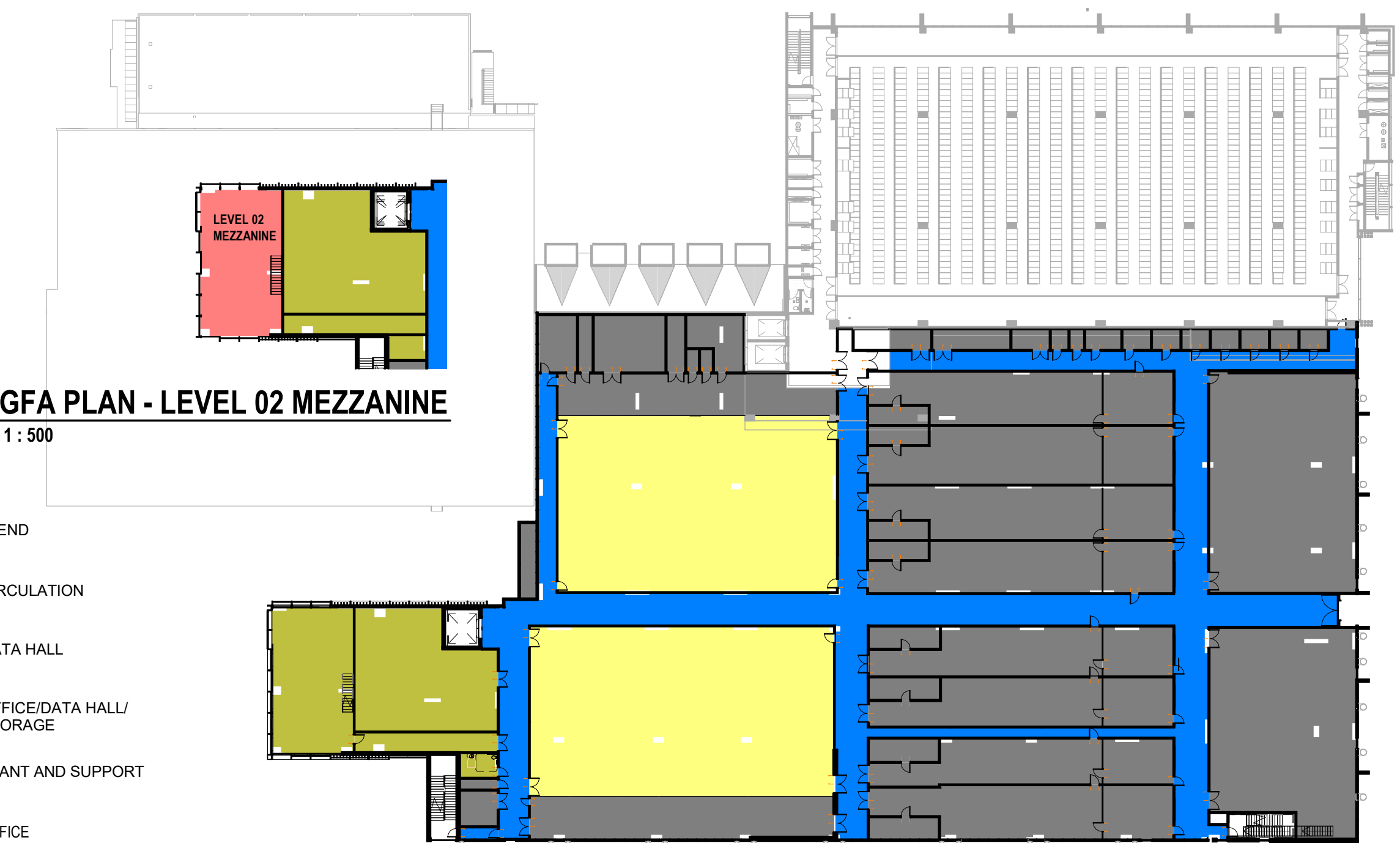
1 **GFA PLAN - GROUND LEVEL**
1 : 500



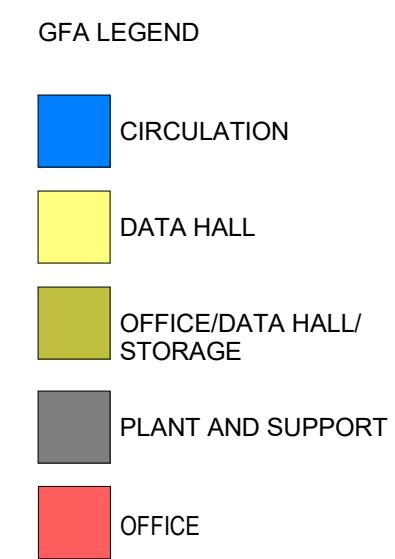
3 **GFA PLAN - LEVEL 01B**
1 : 500



2 **GFA PLAN - LEVEL 01**
1 : 500



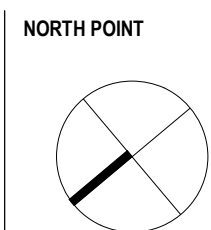
5 **GFA PLAN - LEVEL 02 MEZZANINE**
1 : 500



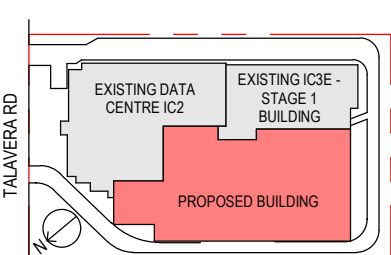
4 **GFA PLAN - LEVEL 02**
1 : 500

REV	DESCRIPTION
G	REVISED SSDA ISSUE
F	REVISED SSDA ISSUE
E	REVISED SSDA ISSUE
D	REVISED SSDA ISSUE
C	REVISED SSDA ISSUE
B	REVISED SSDA ISSUE
A	ISSUED FOR SSD APPLICATION

DATE
26/10/22
20/10/2022
27/09/2022
11/04/22
25/03/22
25/02/22
21/10/21



KEY PLAN



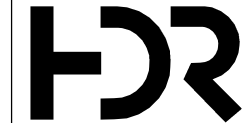
PROJECT MANAGER



CLIENT



ARCHITECT



Level 24, 25 Martin Place, Sydney NSW 2000, Australia
+61 2 9556 2666 | hdrinc.com
HDR Pty. Limited ABN 76 158 075 220 trading as HDR

Nominated Architect: Cate Cowlishaw 10786 (NSW)

PROJECT

IC3 SUPER WEST
17-23 TALAVERA RD, MACQUARIE
PARK

DRAWING TITLE

GFA - SHEET 1

PROJECT STATUS
SSDA RESUBMISSION

PROJECT NUMBER

10301489

SCALE
1 : 500 @ A1

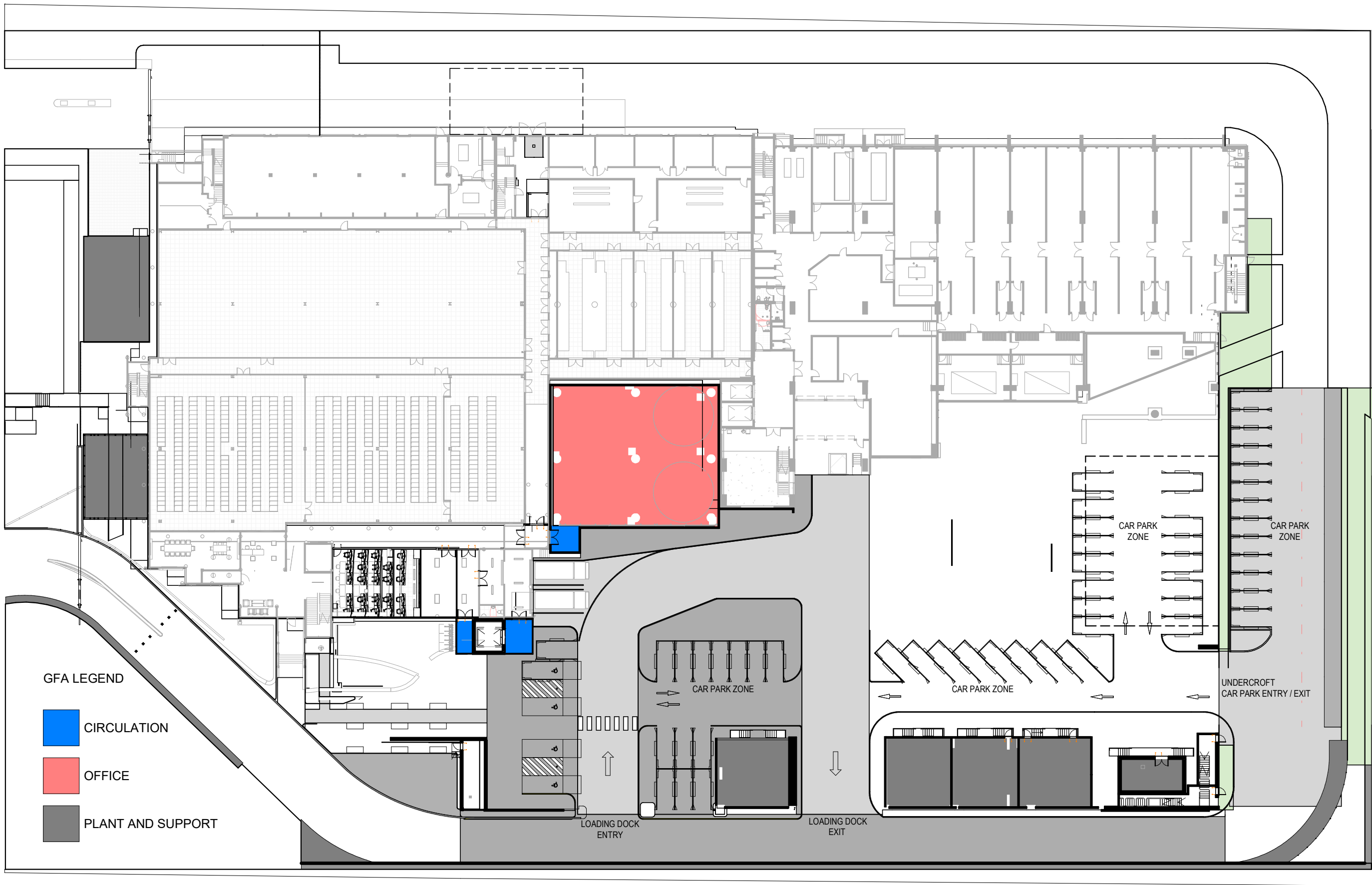
THIS DOCUMENT IS THE COPYRIGHT OF HDR.
ALL INFORMATION ILLUSTRATED ON THIS DOCUMENT IS TO BE CHECKED AND VERIFIED ON SITE
IN THE EVENT OF DISCREPANCIES REFER TO ARCHITECT PRIOR TO COMMENCEMENT OF THE
WORK. DO NOT SCALE DRAWINGS MANUALLY OR ELECTRONICALLY.

DRAWING NUMBER

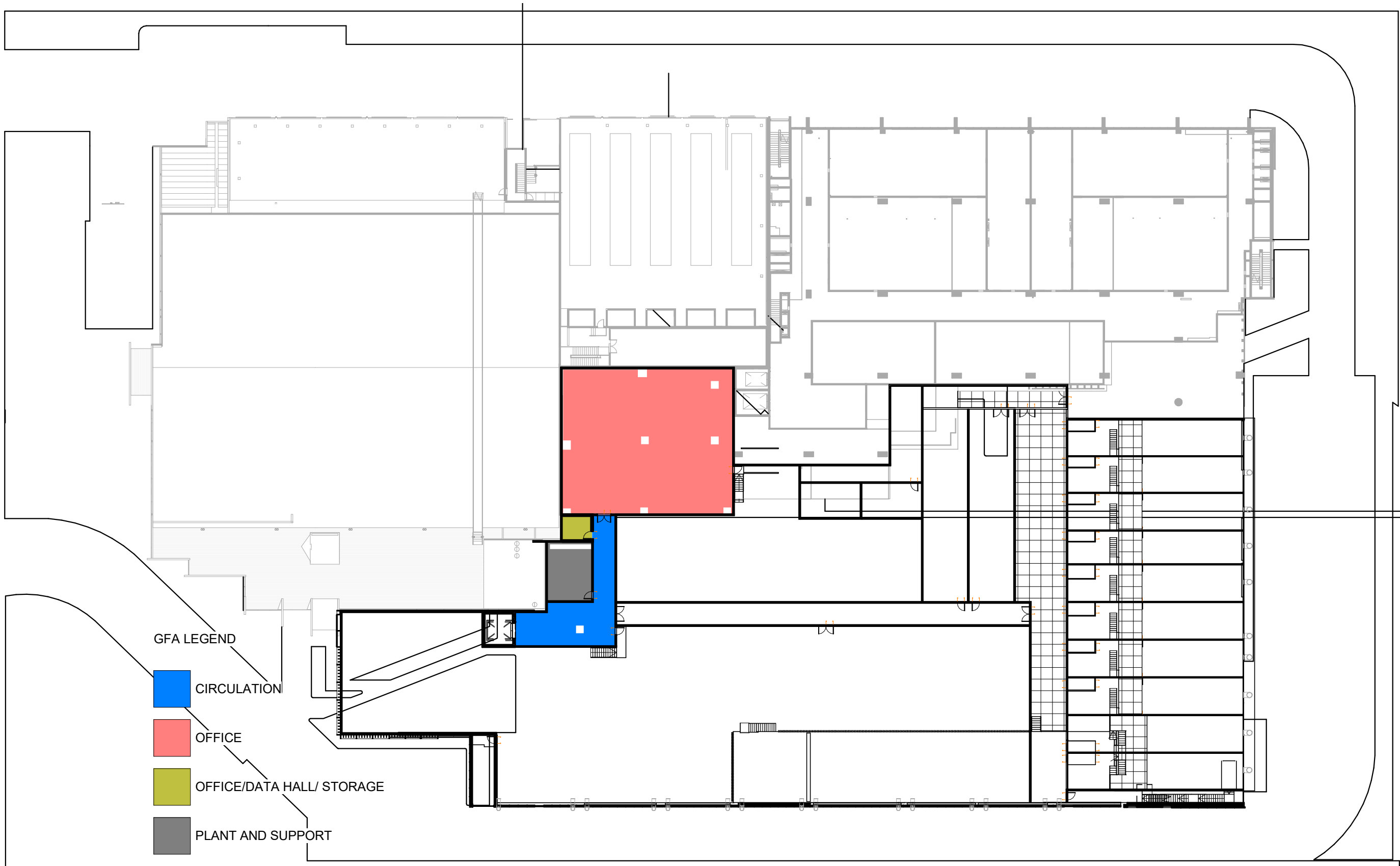
A2001

ISSUE

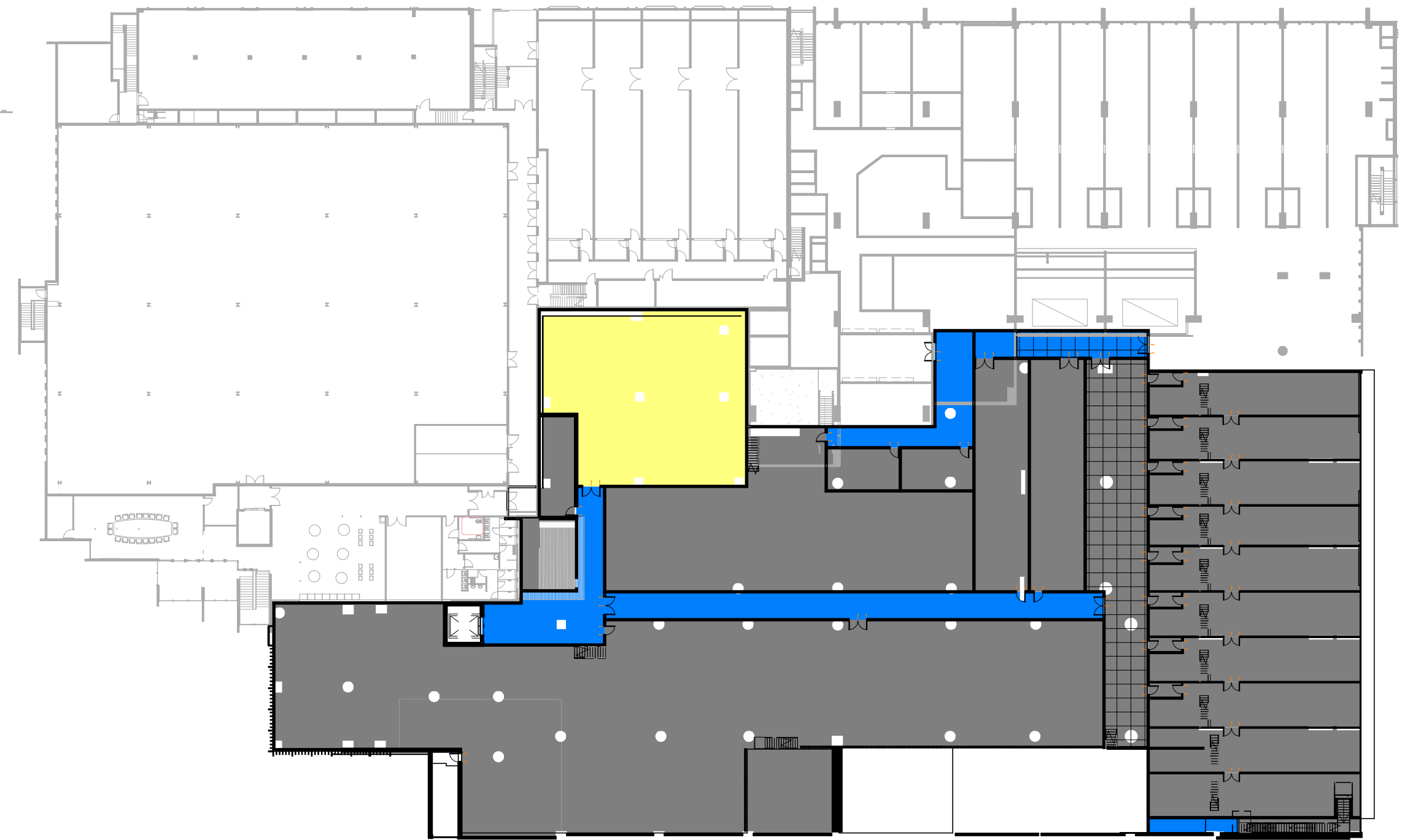
G



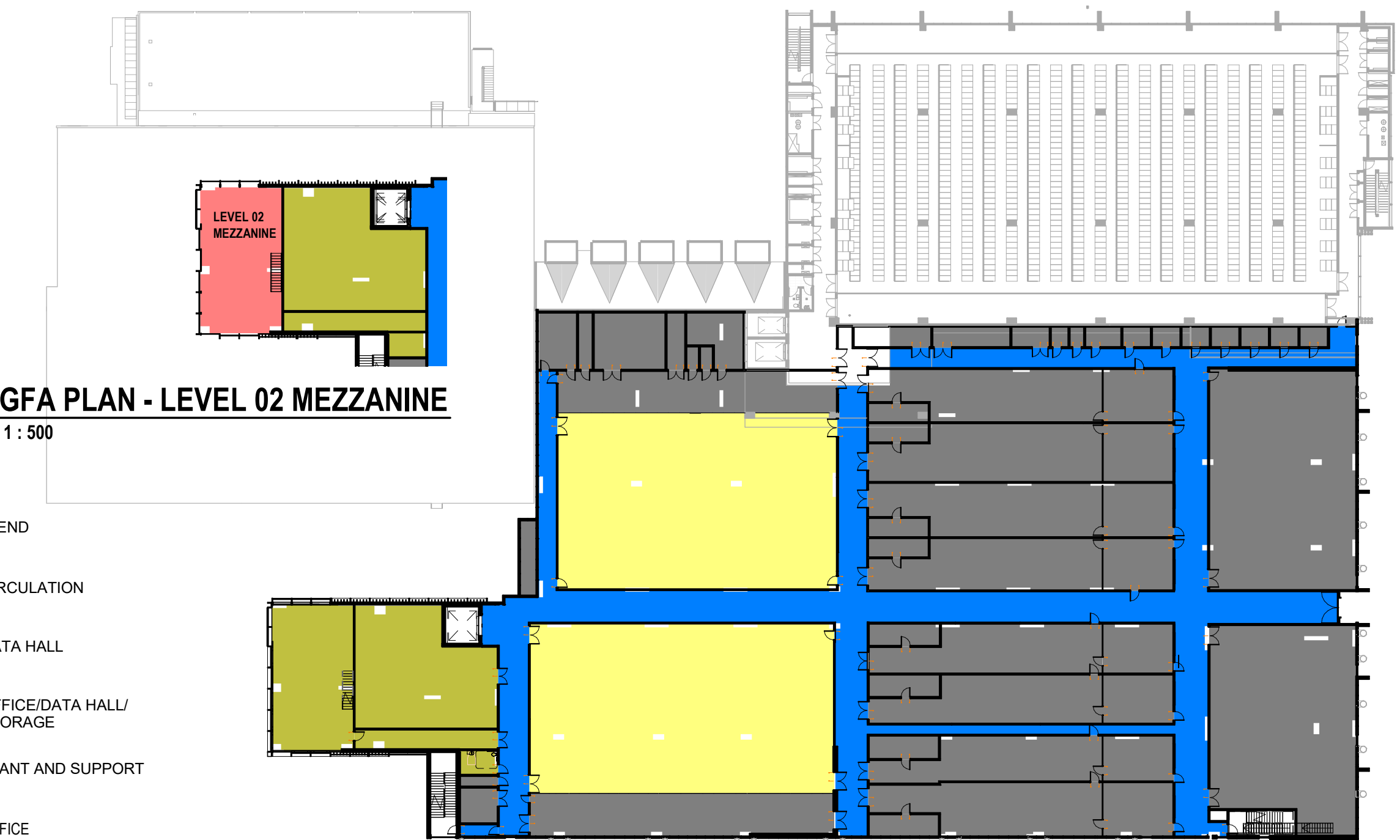
1 GFA PLAN - GROUND LEVEL
1 : 500



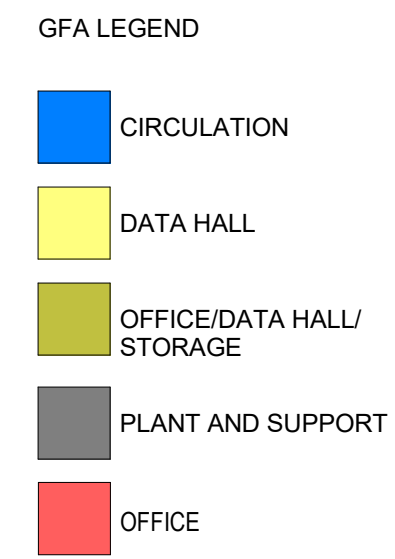
3 GFA PLAN - LEVEL 01B
1 : 500



2 GFA PLAN - LEVEL 01
1 : 500



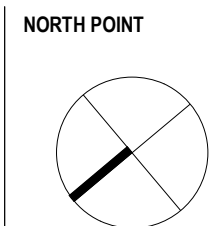
5 GFA PLAN - LEVEL 02 MEZZANINE
1 : 500



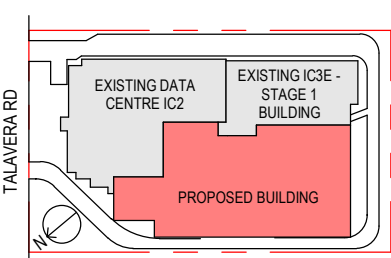
4 GFA PLAN - LEVEL 02
1 : 500

REV	DESCRIPTION
G	REVISED SSDA ISSUE
F	REVISED SSDA ISSUE
E	REVISED SSDA ISSUE
D	REVISED SSDA ISSUE
C	REVISED SSDA ISSUE
B	REVISED SSDA ISSUE
A	ISSUED FOR SSD APPLICATION

DATE
26/10/22
20/10/2022
27/09/2022
11/04/22
25/03/22
25/02/22
21/10/21



KEY PLAN



PROJECT MANAGER



CLIENT



ARCHITECT



Level 24, 25 Martin Place, Sydney NSW 2000, Australia
+61 2 9556 2666 | hdrinc.com
HDR Pty. Limited ABN 76 158 075 220 trading as HDR

Nominated Architect: Cate Cowlishaw 10786 (NSW)

PROJECT

IC3 SUPER WEST
17-23 TALAVERA RD, MACQUARIE
PARK

DRAWING TITLE

GFA - SHEET 1

PROJECT STATUS
SSDA RESUBMISSION

PROJECT NUMBER

10301489

SCALE
1 : 500 @ A1

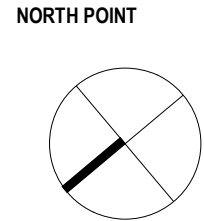
THIS DOCUMENT IS THE COPYRIGHT OF HDR.
ALL INFORMATION ILLUSTRATED ON THIS DOCUMENT IS TO BE CHECKED AND VERIFIED ON SITE
IN THE EVENT OF DISCREPANCIES REFER TO ARCHITECT PRIOR TO COMMENCEMENT OF THE
WORK. DO NOT SCALE DRAWINGS MANUALLY OR ELECTRONICALLY.

DRAWING NUMBER

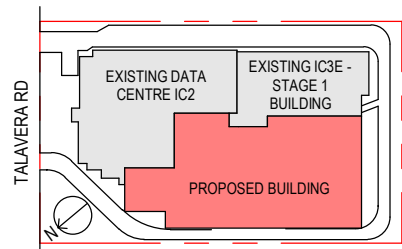
A2001

ISSUE

G



KEY PLAN



PROJECT MANAGER



CLIENT



ARCHITECT



Level 24, 25 Martin Place, Sydney NSW 2000, Australia
+61 2 9556 2666 | hdrinc.com
HDR Pty. Limited ABN 76 158 075 220 trading as HDR

Nominated Architect: Cate Cowlishaw 10786 (NSW)

PROJECT

IC3 SUPER WEST
17-23 TALAVERA RD, MACQUARIE PARK

DRAWING TITLE

GFA - SHEET 3

PROJECT STATUS
SSDA RESUBMISSION

PROJECT NUMBER

10301489

SCALE
@ A1

THIS DOCUMENT IS THE COPYRIGHT OF HDR.
ALL INFORMATION ILLUSTRATED ON THIS DOCUMENT IS TO BE CHECKED AND VERIFIED ON SITE.
IN THE EVENT OF DISCREPANCIES REFER TO ARCHITECT PRIOR TO COMMENCEMENT OF THE WORK. DO NOT SCALE DRAWINGS MANUALLY OR ELECTRONICALLY.

DRAWING NUMBER

A2003

ISSUE

C

AREA SCHEDULE - GFA ONLY		
LEVEL	DEPARTMENT	AREA
GROUND LEVEL	CIRCULATION	39 m²
GROUND LEVEL	OFFICE	395 m²
		434 m²
LEVEL 01	CIRCULATION	404 m²
LEVEL 01	DATA HALL	386 m²
		790 m²
LEVEL 01B	CIRCULATION	99 m²
LEVEL 01B	OFFICE	417 m²
LEVEL 01B	OFFICE/DATA HALL/ STORAGE	11 m²
		527 m²
LEVEL 02	CIRCULATION	902 m²
LEVEL 02	DATA HALL	1,175 m²
LEVEL 02	OFFICE/DATA HALL/ STORAGE	360 m²
		2,437 m²
LEVEL 02 MEZZANINE	OFFICE	139 m²
		139 m²
LEVEL 03	CIRCULATION	704 m²
LEVEL 03	DATA HALL	2,447 m²
LEVEL 03	OFFICE/DATA HALL/ STORAGE	360 m²
		3,510 m²
LEVEL 03 MEZZANINE	OFFICE	136 m²
		136 m²
LEVEL 04	CIRCULATION	744 m²
LEVEL 04	DATA HALL	2,379 m²
LEVEL 04	OFFICE/DATA HALL/ STORAGE	358 m²
		3,481 m²
LEVEL 04 MEZZANINE	OFFICE	137 m²
		137 m²
LEVEL 05	CIRCULATION	730 m²
LEVEL 05	DATA HALL	2,436 m²
LEVEL 05	OFFICE/DATA HALL/ STORAGE	359 m²
		3,525 m²
LEVEL 05 MEZZANINE	OFFICE	137 m²
		137 m²
LEVEL 06	CIRCULATION	336 m²
LEVEL 06	DATA HALL	554 m²
		890 m²
		16,142 m²

AREA SCHEDULE - ALL		
LEVEL	DEPARTMENT	AREA
GROUND LEVEL	CIRCULATION	39 m²
GROUND LEVEL	OFFICE	395 m²
GROUND LEVEL	PLANT AND SUPPORT	583 m²
		1,017 m²
LEVEL 01	CIRCULATION	404 m²
LEVEL 01	DATA HALL	386 m²
LEVEL 01	PLANT AND SUPPORT	4,125 m²
		4,915 m²
LEVEL 01B	CIRCULATION	99 m²
LEVEL 01B	OFFICE	417 m²
LEVEL 01B	OFFICE/DATA HALL/ STORAGE	11 m²
LEVEL 01B	PLANT AND SUPPORT	44 m²
		571 m²
LEVEL 02	CIRCULATION	902 m²
LEVEL 02	DATA HALL	1,175 m²
LEVEL 02	OFFICE/DATA HALL/ STORAGE	360 m²
LEVEL 02	PLANT AND SUPPORT	2,701 m²
		5,138 m²
LEVEL 02 MEZZANINE	OFFICE	139 m²
		139 m²
LEVEL 03	CIRCULATION	704 m²
LEVEL 03	DATA HALL	2,447 m²
LEVEL 03	OFFICE/DATA HALL/ STORAGE	360 m²
LEVEL 03	PLANT AND SUPPORT	1,635 m²
		5,145 m²
LEVEL 03 MEZZANINE	OFFICE	136 m²
		136 m²
LEVEL 04	CIRCULATION	744 m²
LEVEL 04	DATA HALL	2,379 m²
LEVEL 04	OFFICE/DATA HALL/ STORAGE	358 m²
LEVEL 04	PLANT AND SUPPORT	1,666 m²
		5,147 m²
LEVEL 04 MEZZANINE	OFFICE	137 m²
		137 m²
LEVEL 05	CIRCULATION	730 m²
LEVEL 05	DATA HALL	2,436 m²
LEVEL 05	OFFICE/DATA HALL/ STORAGE	359 m²
LEVEL 05	PLANT AND SUPPORT	1,620 m²
		5,144 m²
LEVEL 05 MEZZANINE	OFFICE	137 m²
		137 m²
LEVEL 06	CIRCULATION	336 m²
LEVEL 06	DATA HALL	554 m²
LEVEL 06	PLANT AND SUPPORT	4,343 m²
		5,233 m²
		32,859 m²

AREA SCHEDULE SUMMARY:

SITE AREA 20,094sqm

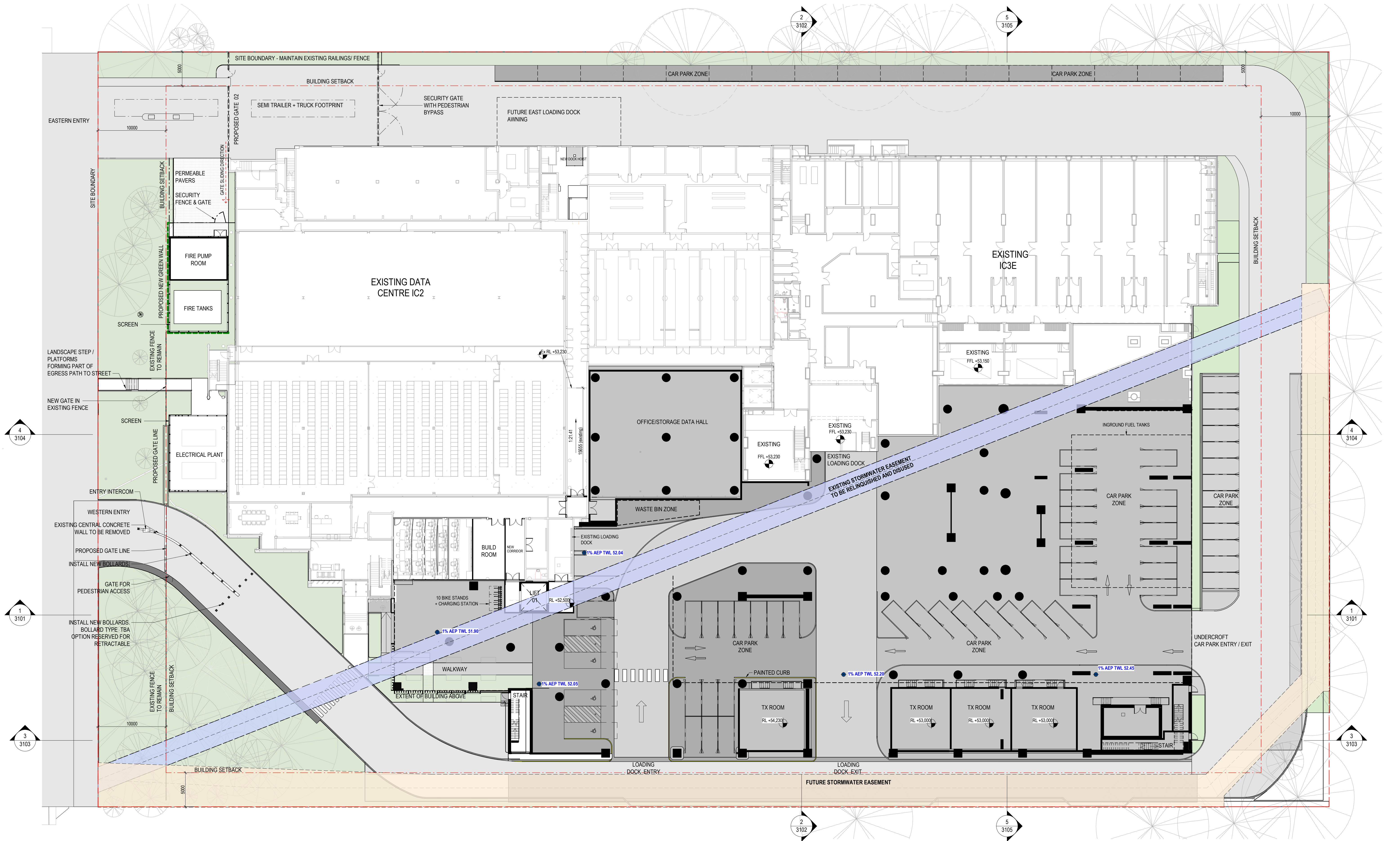
EXISTING IC2 GFA 4778sqm

EXISTING IC3E GFA 6731sqm

PROPOSED IC3W GFA 16,142sqm

TOTAL GFA 27651sqm

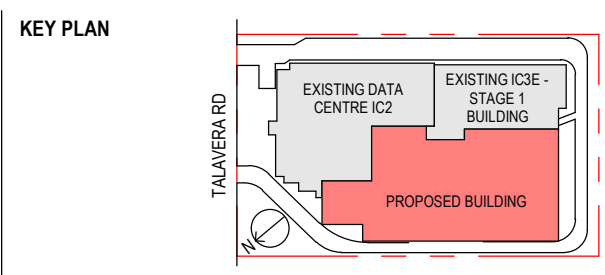
TOTAL FSR 1.376



E	REVISED SSDA ISSUE
D	REVISED SSDA ISSUE
C	REVISED SSDA ISSUE
B	REVISED SSDA ISSUE
A	REVISED SSDA ISSUE
8	EXISTING STORMWATER ADDED
7	CARPARK REVISED
6	EASEMENT UPDATE ISSUE
REV	DESCRIPTION

26/10/22
20/10/2022
27/09/2022
16/09/22
08/08/22
04/07/22
28/06/22
14/04/22
DATE

NORTH POINT



PROJECT MANAGER

GIDDIS
PROJECT MANAGEMENT

CLIENT

macquarie
DATA CENTRES

ARCHITECT

HDR

Level 24, 25 Martin Place, Sydney NSW 2000, Australia
+61 2 9556 2666 | hdrinc.com
HDR Pty. Limited ABN 76 158 075 220 trading as HDR
Nominated Architect: Cate Cowlishaw 10786 (NSW)

PROJECT

**IC3 SUPER WEST
17-23 TALAVERA RD, MACQUARIE
PARK**

DRAWING TITLE

**GENERAL ARRANGEMENT -
GROUND LEVEL**

PROJECT STATUS
SSDA RESUBMISSION

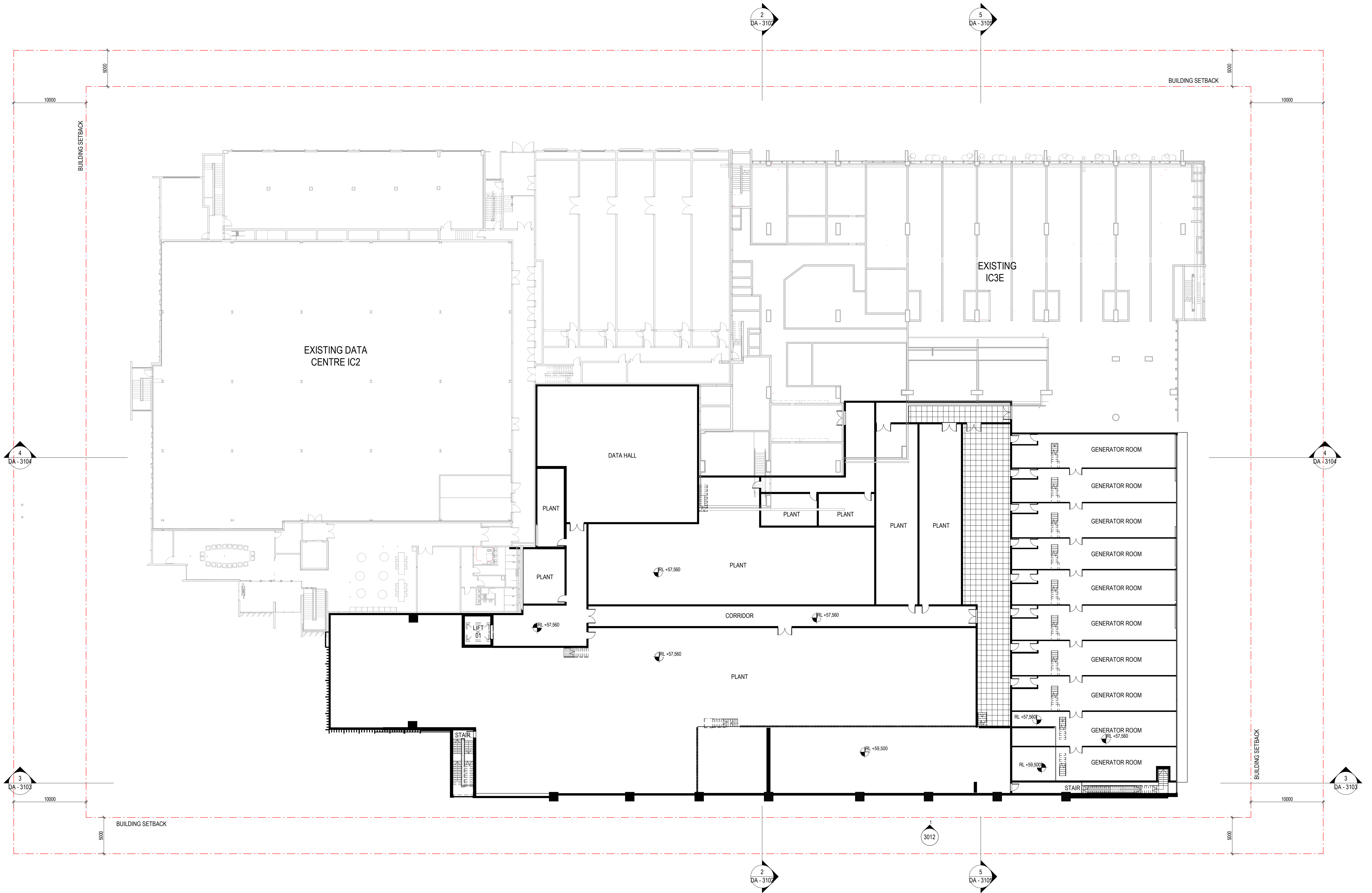
PROJECT NUMBER
10301489

DRAWING NUMBER
A2101

ISSUE
E

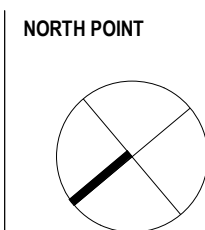
SCALE
1 : 250 @ A1

THIS DOCUMENT IS THE COPYRIGHT OF HDR.
ALL INFORMATION ILLUSTRATED ON THIS DOCUMENT IS TO BE CHECKED AND VERIFIED ON SITE.
IN THE EVENT OF DISCREPANCIES REFER TO ARCHITECT PRIOR TO COMMENCEMENT OF THE
WORK. DO NOT SCALE DRAWINGS MANUALLY OR ELECTRONICALLY.

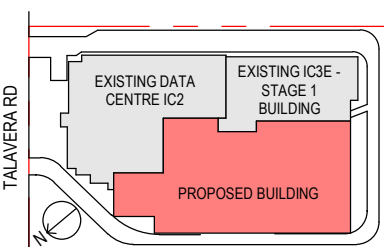


REV	DESCRIPTION
E	REVISED SSDA ISSUE
D	REVISED SSDA ISSUE
C	REVISED SSDA ISSUE
B	REVISED SSDA ISSUE
A	REVISED SSDA ISSUE
3	ECI PRICING ISSUE
2	ISSUED FOR INFORMATION
1	ISSUED FOR INFORMATION

DATE
26/10/22
20/10/2022
27/09/2022
16/09/22
08/08/22
31/01/22
21/01/22
22/12/21



KEY PLAN



PROJECT MANAGER



CLIENT



ARCHITECT



Level 24, 25 Martin Place, Sydney NSW 2000, Australia
+61 2 9556 2666 | hdrinc.com
HDR Pty. Limited ABN 76 158 075 220 trading as HDR

Nominated Architect: Cate Cowlishaw 10786 (NSW)

PROJECT

IC3 SUPER WEST
17-23 TALAVERA RD, MACQUARIE
PARK

DRAWING TITLE

GENERAL ARRANGEMENT -
LEVEL 01

PROJECT STATUS
SSDA RESUBMISSION

PROJECT NUMBER

10301489

SCALE:
1 : 250 @ A1

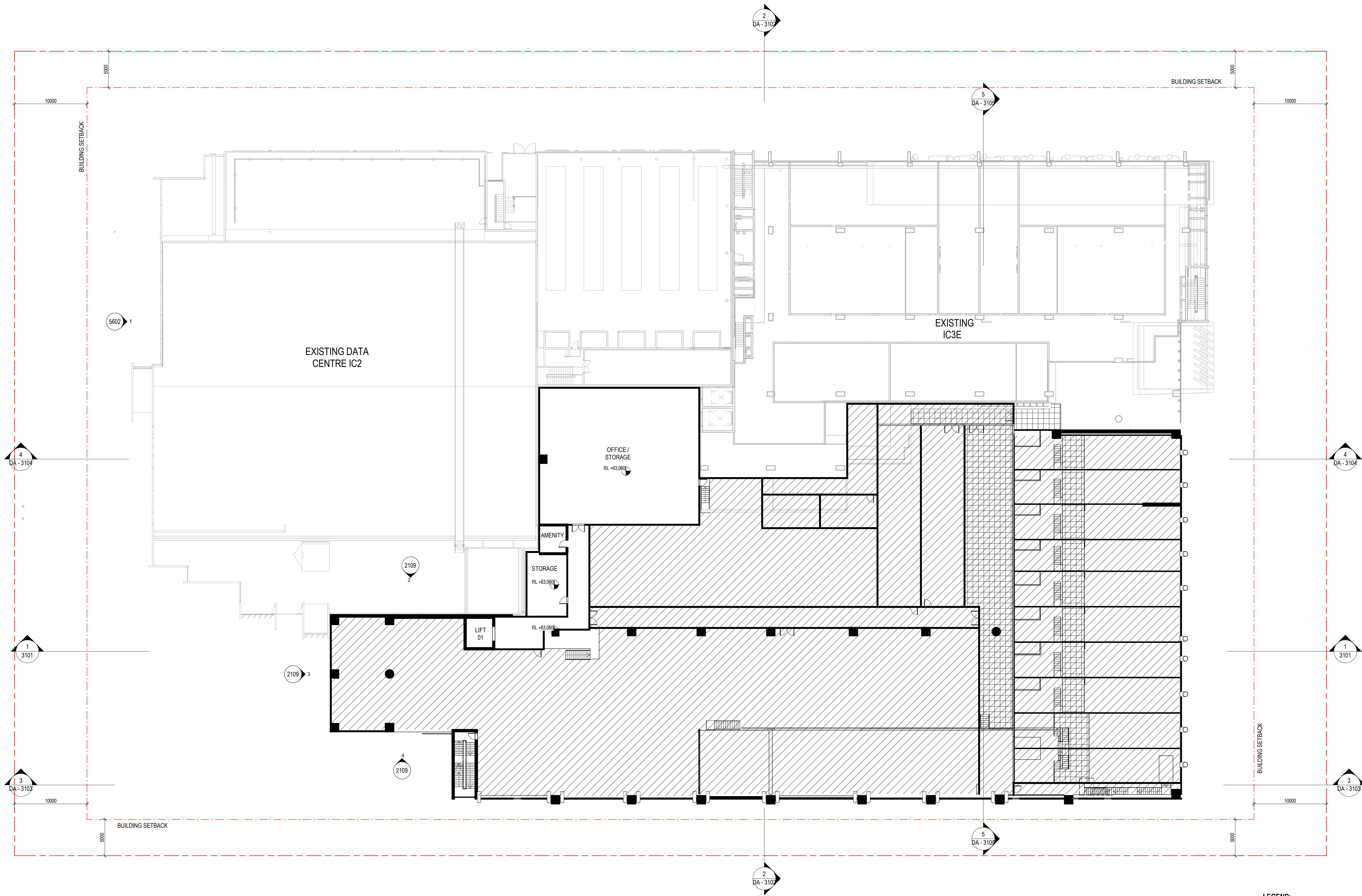
DRAWING NUMBER

A2102

ISSUE

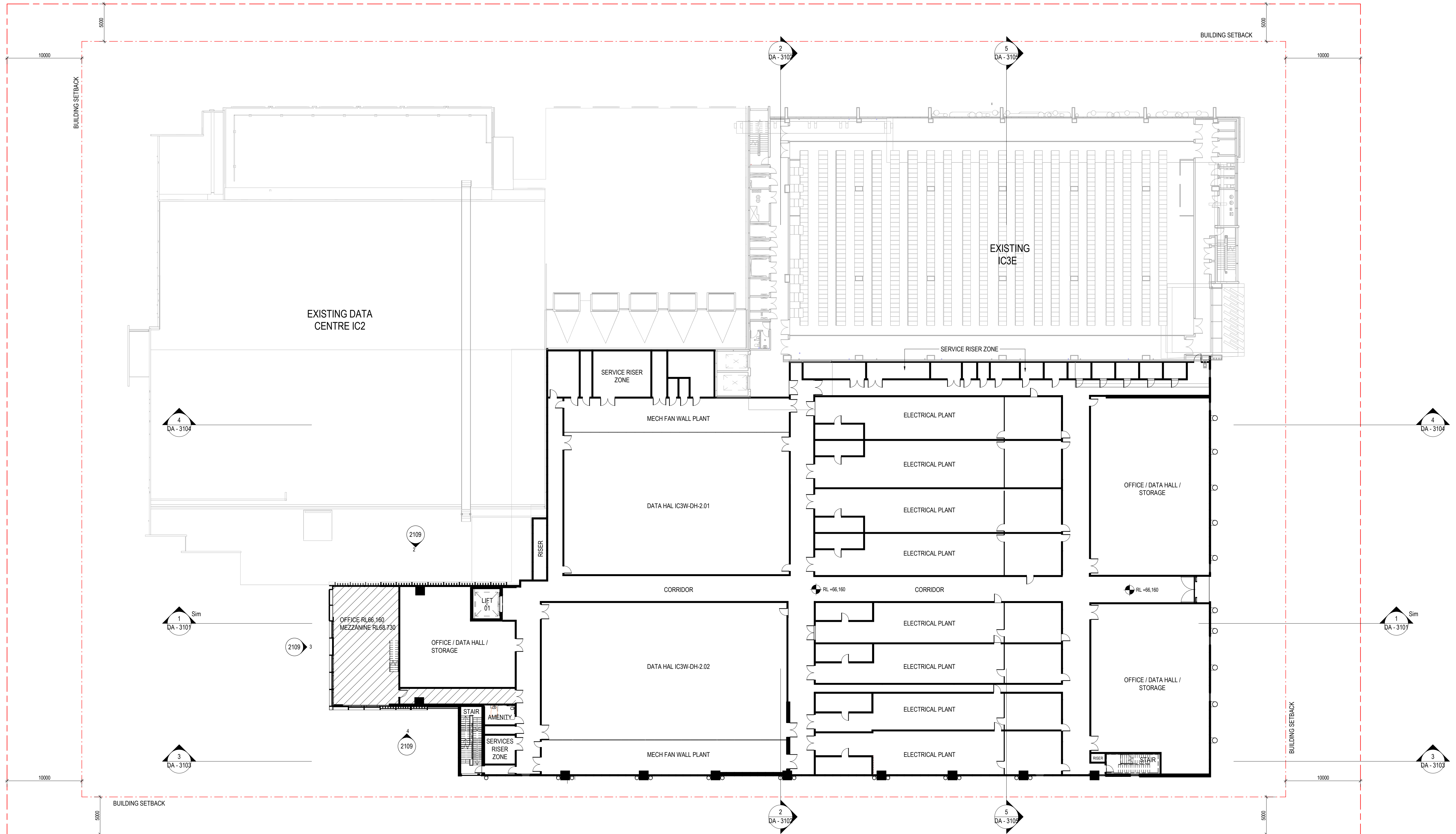
E

THIS DOCUMENT IS THE COPYRIGHT OF HDR.
ALL INFORMATION ILLUSTRATED ON THIS DOCUMENT IS TO BE CHECKED AND VERIFIED ON SITE.
IN THE EVENT OF DISCREPANCIES REFER TO ARCHITECT PRIOR TO COMMENCEMENT OF THE
WORK. DO NOT SCALE DRAWINGS MANUALLY OR ELECTRONICALLY.



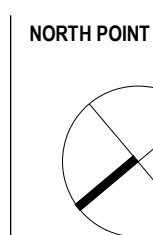
LEGEND:

LEVEL 1 BELOW (FULL HEIGHT SPACE)

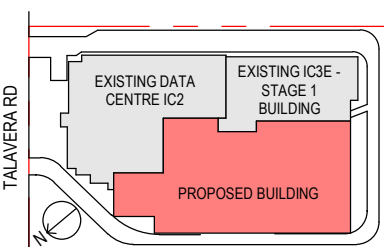


REV	DESCRIPTION
E	REVISED SSDA ISSUE
D	REVISED SSDA ISSUE
C	REVISED SSDA ISSUE
B	REVISED SSDA ISSUE
A	REVISED SSDA ISSUE
3	ECI PRICING ISSUE
2	ISSUED FOR INFORMATION
1	ISSUED FOR INFORMATION

26/10/22
20/10/2022
27/09/2022
16/09/22
08/09/22
31/10/22
21/10/22
22/12/21
DATE



KEY PLAN



PROJECT MANAGER



CLIENT



ARCHITECT



Level 24, 25 Martin Place, Sydney NSW 2000, Australia
+61 2 9556 2666 | hdrinc.com
HDR Pty. Limited ABN 76 158 075 220 trading as HDR

Nominated Architect: Cate Cowlishaw 10786 (NSW)

PROJECT

IC3 SUPER WEST
17-23 TALAVERA RD, MACQUARIE
PARK

DRAWING TITLE

GENERAL ARRANGEMENT -
LEVEL 02

PROJECT STATUS
SSDA RESUBMISSION

PROJECT NUMBER

10301489

SCALE:
1 : 250 @ A1

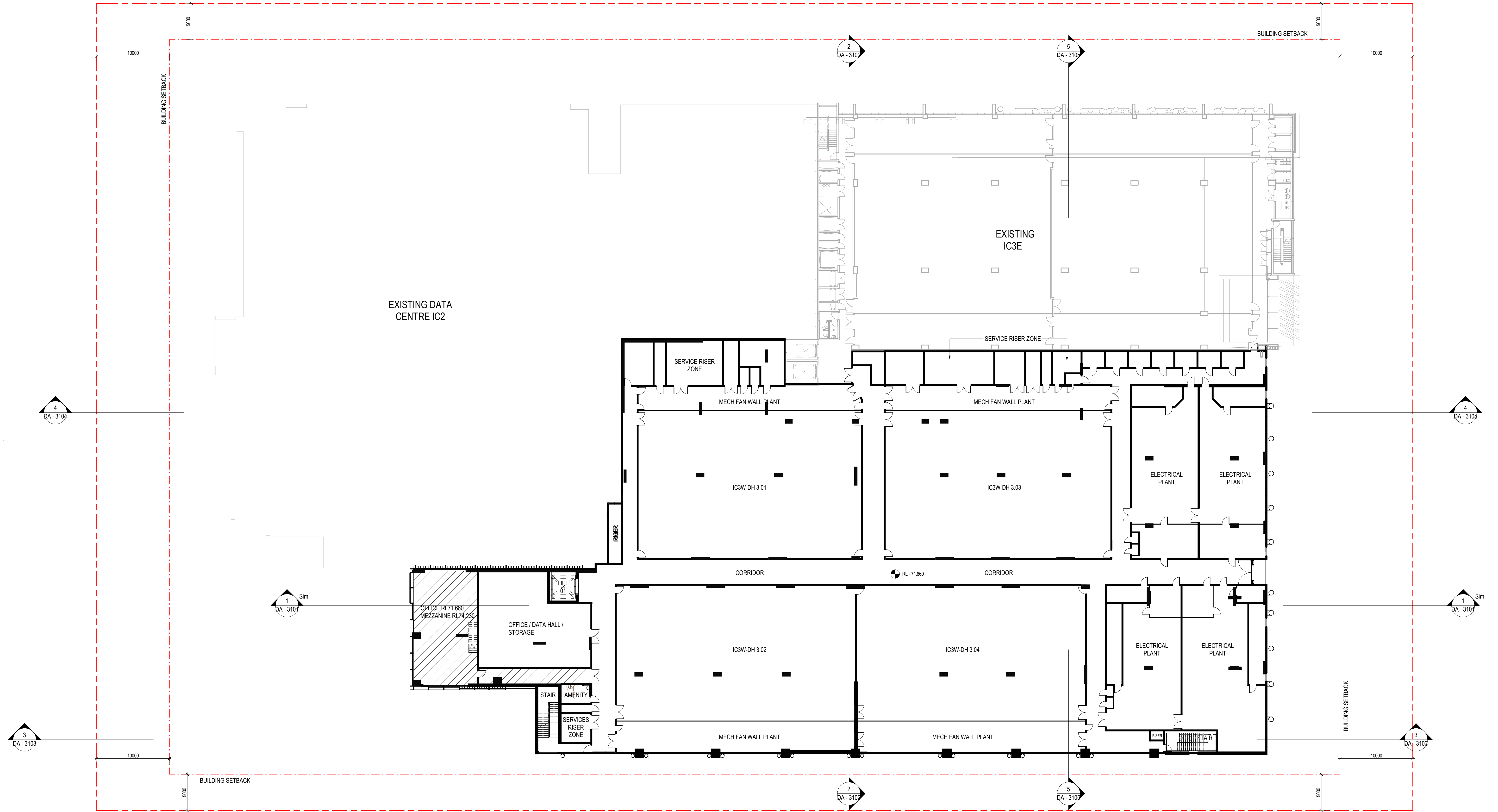
THIS DOCUMENT IS THE COPYRIGHT OF HDR.
ALL INFORMATION ILLUSTRATED ON THIS DOCUMENT IS TO BE CHECKED AND VERIFIED ON SITE.
IN THE EVENT OF DISCREPANCIES REFER TO ARCHITECT PRIOR TO COMMENCEMENT OF THE
WORK. DO NOT SCALE DRAWINGS MANUALLY OR ELECTRONICALLY.

DRAWING NUMBER

A2103

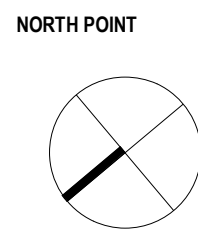
ISSUE

E

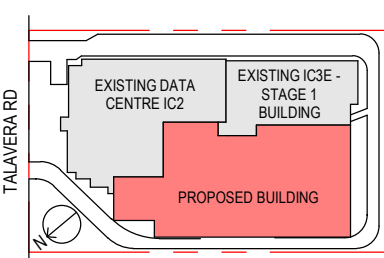


REV	DESCRIPTION
E	REVISED SSDA ISSUE
D	REVISED SSDA ISSUE
C	REVISED SSDA ISSUE
B	REVISED SSDA ISSUE
A	REVISED SSDA ISSUE
3	ECI PRICING ISSUE
2	ISSUED FOR INFORMATION
1	ISSUED FOR INFORMATION

DATE	DATE
26/10/22	20/10/2022
27/09/2022	16/09/22
08/08/22	08/08/22
31/01/22	31/01/22
21/01/22	21/01/22
22/12/21	22/12/21



KEY PLAN



PROJECT MANAGER



CLIENT



ARCHITECT



Level 24, 25 Martin Place, Sydney NSW 2000, Australia
+61 2 9556 2666 | hdrinc.com
HDR Pty. Limited ABN 76 158 075 220 trading as HDR
Nominated Architect: Cate Cowlishaw 10786 (NSW)

PROJECT

IC3 SUPER WEST
17-23 TALAVERA RD, MACQUARIE
PARK

DRAWING TITLE

GENERAL ARRANGEMENT -
LEVEL 03

PROJECT STATUS

SSDA RESUBMISSION

PROJECT NUMBER

10301489

SCALE:
1 : 250 @ A1

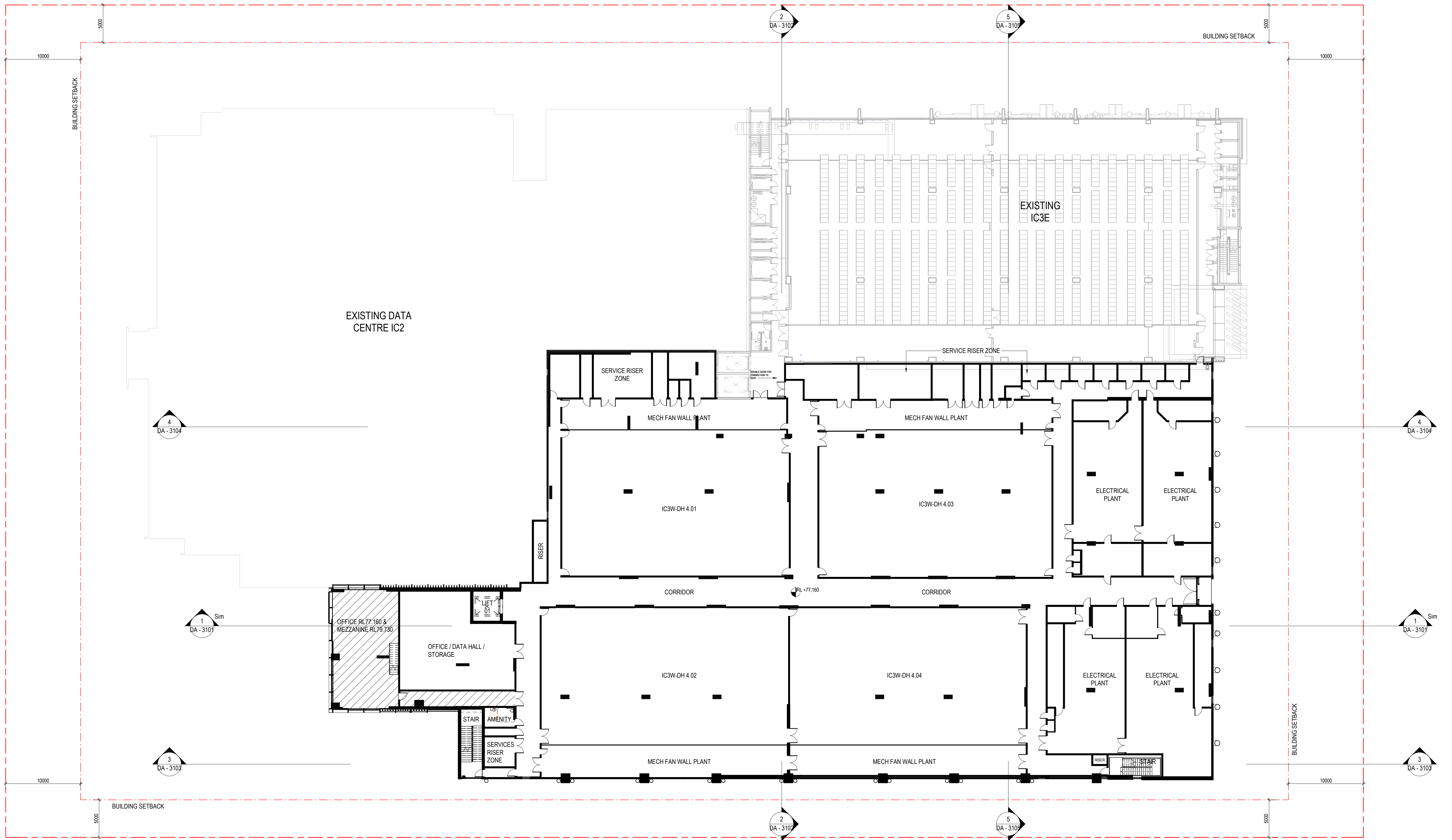
THIS DOCUMENT IS THE COPYRIGHT OF HDR.
ALL INFORMATION ILLUSTRATED ON THIS DOCUMENT IS TO BE CHECKED AND VERIFIED ON SITE.
IN THE EVENT OF DISCREPANCIES REFER TO ARCHITECT PRIOR TO COMMENCEMENT OF THE
WORK. DO NOT SCALE DRAWINGS MANUALLY OR ELECTRONICALLY.

DRAWING NUMBER

A2104

ISSUE

E

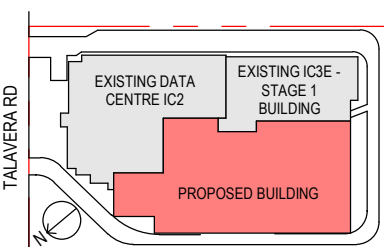


REV	DESCRIPTION
E	REVISED SSDA ISSUE
D	REVISED SSDA ISSUE
C	REVISED SSDA ISSUE
B	REVISED SSDA ISSUE
A	REVISED SSDA ISSUE
3	ECI PRICING ISSUE
2	ISSUED FOR INFORMATION
1	ISSUED FOR INFORMATION

DATE
26/10/22
20/10/2022
27/09/2022
16/09/22
08/08/22
31/01/22
21/01/22
22/12/21

NORTH POINT

KEY PLAN



PROJECT MANAGER



CLIENT



ARCHITECT



Level 24, 25 Martin Place, Sydney NSW 2000, Australia
+61 2 9556 2666 | hdrinc.com
HDR Pty. Limited ABN 76 158 075 220 trading as HDR

Nominated Architect: Cate Cowlishaw 10786 (NSW)

PROJECT

**IC3 SUPER WEST
17-23 TALAVERA RD, MACQUARIE
PARK**

DRAWING TITLE

**GENERAL ARRANGEMENT -
LEVEL 04**

PROJECT STATUS
SSDA RESUBMISSION

PROJECT NUMBER

10301489

SCALE:
1 : 250 @ A1

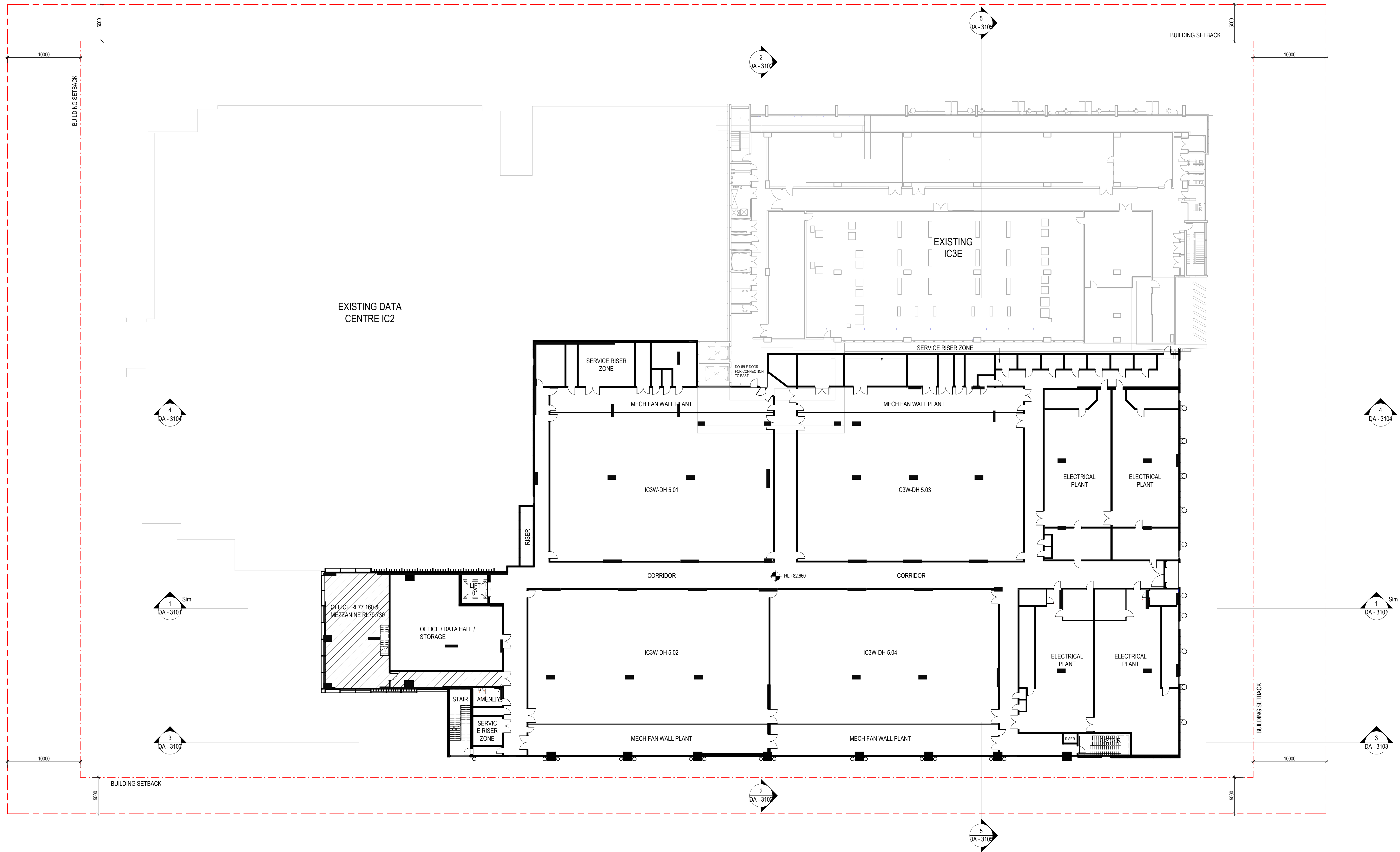
THIS DOCUMENT IS THE COPYRIGHT OF HDR.
ALL INFORMATION ILLUSTRATED ON THIS DOCUMENT IS TO BE CHECKED AND VERIFIED ON SITE.
IN THE EVENT OF DISCREPANCIES REFER TO ARCHITECT PRIOR TO COMMENCEMENT OF THE
WORK. DO NOT SCALE DRAWINGS MANUALLY OR ELECTRONICALLY.

DRAWING NUMBER

A2105

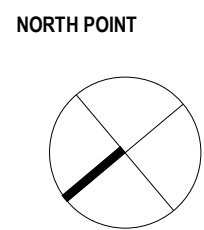
ISSUE

E

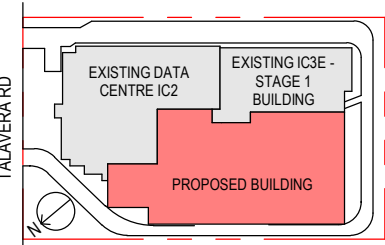


REV	DESCRIPTION
E	REVISED SSDA ISSUE
D	REVISED SSDA ISSUE
C	REVISED SSDA ISSUE
B	REVISED SSDA ISSUE
A	REVISED SSDA ISSUE
3	ECI PRICING ISSUE
2	ISSUED FOR INFORMATION
1	ISSUED FOR INFORMATION

DATE
26/10/22
20/10/2022
27/09/2022
16/09/22
08/08/22
31/01/22
21/01/22
22/12/21



KEY PLAN



PROJECT MANAGER



CLIENT



ARCHITECT



Level 24, 25 Martin Place, Sydney NSW 2000, Australia
+61 2 9556 2666 | hdrinc.com
HDR Pty. Limited ABN 76 158 075 220 trading as HDR

Nominated Architect: Cate Cowlishaw 10786 (NSW)

PROJECT

IC3 SUPER WEST
17-23 TALAVERA RD, MACQUARIE
PARK

DRAWING TITLE

GENERAL ARRANGEMENT -
LEVEL 05

PROJECT STATUS
SSDA RESUBMISSION

PROJECT NUMBER

10301489

SCALE:
1 : 250 @ A1

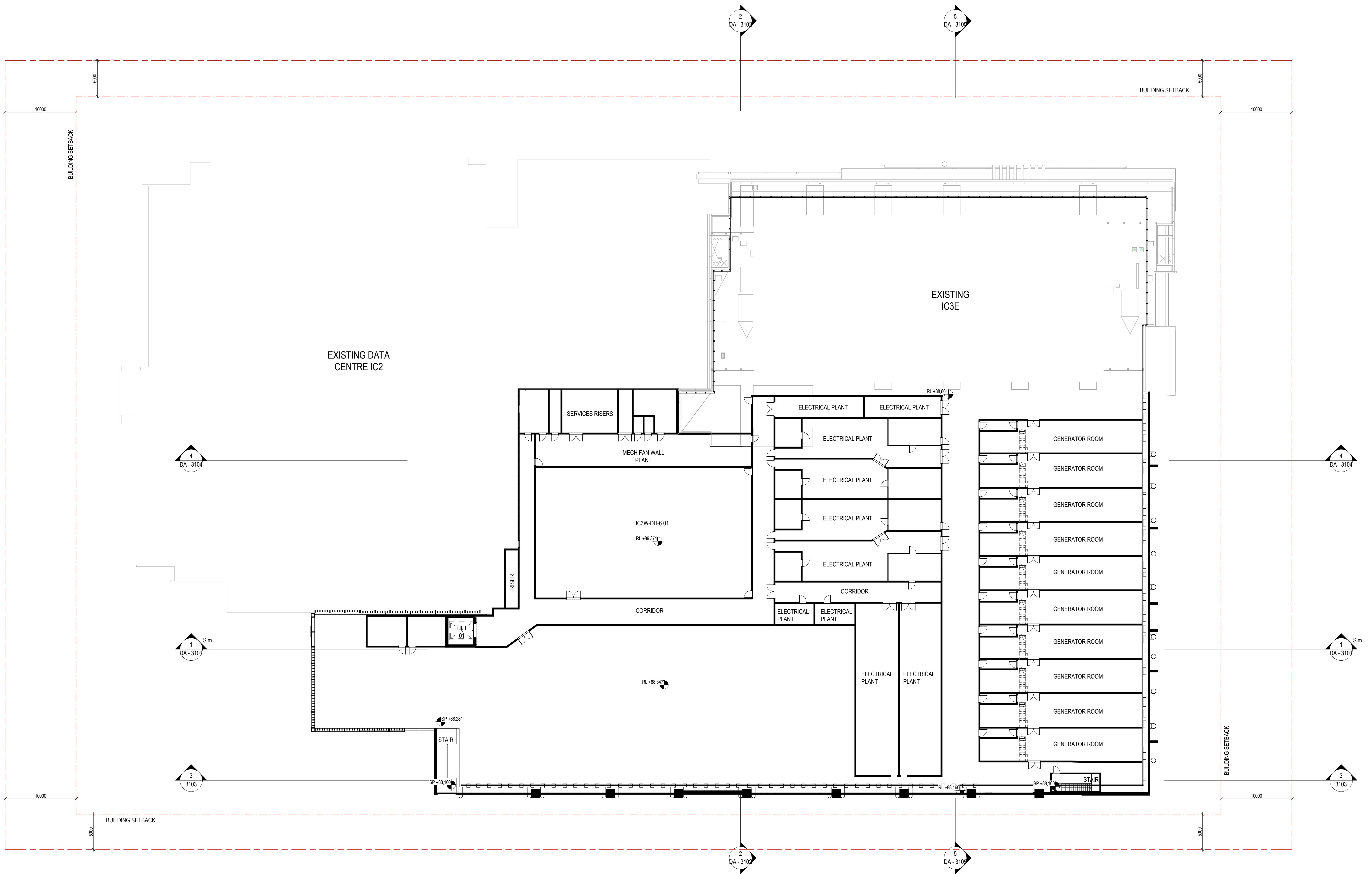
THIS DOCUMENT IS THE COPYRIGHT OF HDR.
ALL INFORMATION ILLUSTRATED ON THIS DOCUMENT IS TO BE CHECKED AND VERIFIED ON SITE.
IN THE EVENT OF DISCREPANCIES REFER TO ARCHITECT PRIOR TO COMMENCEMENT OF THE
WORK. DO NOT SCALE DRAWINGS MANUALLY OR ELECTRONICALLY.

DRAWING NUMBER

A2106

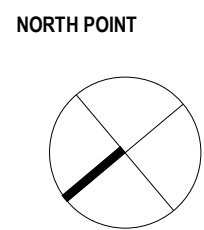
ISSUE

E

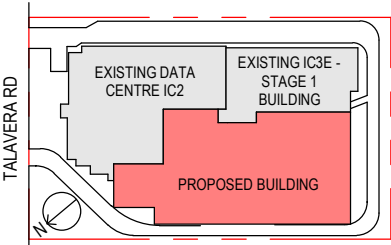


REV	DESCRIPTION
E	REVISED SSDA ISSUE
D	REVISED SSDA ISSUE
C	REVISED SSDA ISSUE
B	REVISED SSDA ISSUE
A	REVISED SSDA ISSUE
3	ECI PRICING ISSUE
2	ISSUED FOR INFORMATION
1	ISSUED FOR INFORMATION

DATE
26/10/22
20/10/2022
27/09/2022
16/09/22
08/08/22
31/01/22
21/01/22
22/12/21



KEY PLAN



PROJECT MANAGER



CLIENT



ARCHITECT



Level 24, 25 Martin Place, Sydney NSW 2000, Australia
+61 2 9556 2666 | hdrinc.com
HDR Pty. Limited ABN 76 158 075 220 trading as HDR
Nominated Architect: Cate Cowlishaw 10786 (NSW)

PROJECT

IC3 SUPER WEST
17-23 TALAVERA RD, MACQUARIE
PARK

DRAWING TITLE

GENERAL ARRANGEMENT -
LEVEL 06

PROJECT STATUS
SSDA RESUBMISSION

PROJECT NUMBER

10301489

SCALE:
1 : 250 @ A1

DRAWING NUMBER

A2107

ISSUE

E

THIS DOCUMENT IS THE COPYRIGHT OF HDR.
ALL INFORMATION ILLUSTRATED ON THIS DOCUMENT IS TO BE CHECKED AND VERIFIED ON SITE.
IN THE EVENT OF DISCREPANCIES REFER TO ARCHITECT PRIOR TO COMMENCEMENT OF THE
WORK. DO NOT SCALE DRAWINGS MANUALLY OR ELECTRONICALLY.

