

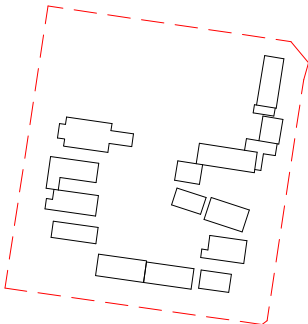


Glenwood High School

Forman Avenue, Glenwood, NSW 2768

DA-AR-0000	COVER PAGE	DA-AR-N103	GA - LEVEL 00
DA-AR-0010	SITE PLAN - DEMO	DA-AR-N113	GA - LEVEL 01
DA-AR-0011	SITE - AERIAL VIEW - EXISTING	DA-AR-N123	GA - LEVEL 02
DA-AR-0012	SITE AND CONTEXT PLAN	DA-AR-N133	GA - LEVEL 03 - ROOF
DA-AR-0013	SITE ANALYSIS		
		DA-AR-N201	ELEVATIONS - SHEET 1
DA-AR-0020	SITE PLAN - RL 62.075	DA-AR-N202	ELEVATIONS - SHEET 2
DA-AR-0021	SITE PLAN - RL 65.975	DA-AR-N301	BUILDING SECTIONS - SHEET 1
DA-AR-0022	SITE PLAN - RL 69.875	DA-AR-N302	BUILDING SECTIONS - SHEET 2
DA-AR-0023	SITE PLAN - ROOF		
DA-AR-0024	PUBLIC DOMAIN PLAN	DA-AR-N501	TYPICAL FACADE SECTIONS - SHEET 1
		DA-AR-N502	TYPICAL FACADE SECTIONS - SHEET 2
DA-AR-0201	STREET ELEVATIONS		
DA-AR-0301	SITE SECTIONS	DA-AR-P103	PERFORMING ARTS - GA - LEVEL 00
		DA-AR-P113	PERFORMING ARTS - GA - LEVEL 01- ROOF
DA-AR-0401	3D VIEW - AXONOMETRIC	DA-AR-P201	PERFORMING ARTS - ELEVATIONS
DA-AR-0402	3D VIEWS	DA-AR-P202	PERFORMING ARTS - ELEVATIONS
DA-AR-0403	3D VIEWS	DA-AR-P301	PERFORMING ARTS - SECTIONS
DA-AR-0404	3D VIEWS		
DA-AR-0405	3D VIEWS	DA-AR-A101	BUILDING A - DEMO PLAN - LEVEL 00
DA-AR-0406	3D VIEWS	DA-AR-A102	BUILDING A - GA - LEVEL 00
DA-AR-0407	3D VIEWS		
DA-AR-0408	3D VIEWS	DA-AR-E101	BUILDING DEF - DEMO PLAN - LEVEL 00
		DA-AR-E102	BUILDING DEF - GA - LEVEL 00
DA-AR-0501	MATERIALS BOARD	DA-AR-E111	BUILDING DEF - DEMO PLAN - LEVEL 01
		DA-AR-E112	BUILDING DEF - GA - LEVEL 01
DA-AR-2001	SOLAR ACCESS STUDIES	DA-AR-E201	BUILDING DEF - ELEVATIONS
DA-AR-2002	SOLAR ACCESS STUDIES	DA-AR-E301	BUILDING DEF - SECTIONS
DA-AR-2003	SOLAR ACCESS STUDIES		
DA-AR-2004	SOLAR ACCESS STUDIES	DA-AR-HJ101	BUILDING HJ - DEMO PLAN - LEVEL 00
DA-AR-2005	SOLAR ACCESS STUDIES	DA-AR-HJ102	BUILDING HJ - GA - LEVEL 00
DA-AR-2006	SOLAR ACCESS STUDIES		
DA-AR-2007	SOLAR ACCESS STUDIES	DA-LA-0001	LANDSCAPE PLAN
DA-AR-2008	SOLAR ACCESS STUDIES	DA-LA-0002	DETAIL LANDSCAPE PLAN SHEET 1
		DA-LA-0003	DETAIL LANDSCAPE PLAN SHEET 2
		DA-LA-0010	TREE CANOPY COVER
		DA-LA-0020	LANDSCAPE MATERIALS AND FINISHES
		DA-LA-0021	LANDSCAPE PLANTING

Key Plan:



Drawing Disclaimer:
Do not scale from drawings.
Verify all dimensions on site before commencing work.
Copying or reproduction of this drawing is strictly prohibited without the consent of PTW Architects

Note
PTW takes no responsibility for external building elements. Anything connected with any design, materials selection, construction or installation of any cladding, facade or external building element must be checked by and remains the responsibility of others, including suitably qualified experts as may be required.

Rev	Amendment	By	Chk*	Date
D	SSDA SUBMISSION	FJ	DJ	21/11/10
C	DRAFT SSDA SUBMISSION	MB	DJ	21/11/01
B	DRAFT SSDA SUBMISSION	MB	DJ	21/10/25
A	DRAFT SSDA SUBMISSION	MB	DJ	21/10/01

*Registered Architect		
DHJ	Diane H Jones	NSW Arch 4778

Consultants

Client



Education

Architect
PTW Architects
Level 11, 88 Phillip Street
Sydney NSW 2000 Australia
T +61 2 9232 5877
ptw.com.au

Peddie Thorp & Walker P/L
ABN 23 000 454 624
trading as PTW Architects

NSW Nominated Architects
S Parsons Architect No.6098
D Jones Architect No.4778



Project PA030471

GLENWOOD HIGH SCHOOL
FORMAN AVENUE, GLENWOOD, NSW
2768

Status
SSDA SUBMISSION

Title
SSDA

COVER

Drawing Number

DA-AR-0000

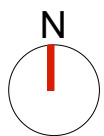
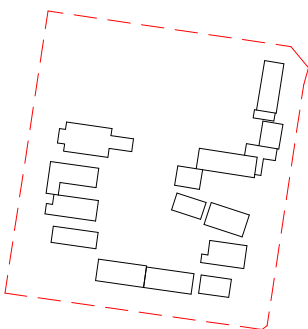
Revision

D



1 SITE PLAN - DEMO
1 : 600

Key Plan:



Drawing Disclaimer:
Do not scale from drawings.
Verify all dimensions on site before commencing work.
Copying or reproduction of this drawing is strictly prohibited without the consent of PTW Architects

Note
PTW takes no responsibility for external building elements. Anything connected with any design, materials selection, construction or installation of any cladding, facade or external building element must be checked by and remains the responsibility of others, including suitably qualified experts as may be required.

Rev	Amendment	By	Chk*	Date
D	SSDA SUBMISSION	FJ	DJ	21/11/10
C	DRAFT SSDA SUBMISSION	MB	DJ	21/11/01
B	DRAFT SSDA SUBMISSION	MB	DJ	21/10/25
A	DRAFT SSDA SUBMISSION	MB	DJ	21/10/01

*Registered Architect
DHJ Diane H Jones NSW Arch 4778

Consultants

Client



Education

Architect
PTW Architects
Level 11, 88 Phillip Street
Sydney NSW 2000 Australia
T +61 2 9232 5877
ptw.com.au

Peddie Thorp & Walker P/L
ABN 23 000 454 624
trading as PTW Architects

NSW Nominated Architects
S Parsons Architect No 6098
D Jones Architect No 4778



0 36 48
As indicated
Project PA030471
GLENWOOD HIGH SCHOOL
FORMAN AVENUE, GLENWOOD, NSW
2768
Status
SSDA SUBMISSION

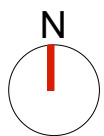
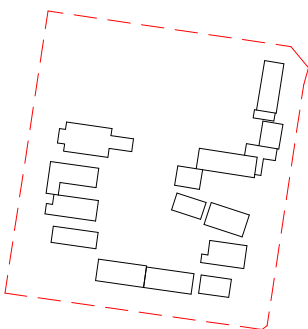
Title
SSDA
SITE PLAN - ROOF DEMO
Drawing Number
DA-AR-0010

Revision
D



1 AERIAL VIEW - EXISTING
1 : 600 @A1

Key Plan:



Drawing Disclaimer:
Do not scale from drawings.
Verify all dimensions on site before commencing work.
Copying or reproduction of this drawing is strictly prohibited without the consent of PTW Architects

Note
PTW takes no responsibility for external building elements. Anything connected with any design, materials selection, construction or installation of any cladding, facade or external building element must be checked by and remains the responsibility of others, including suitably qualified experts as may be required.

Rev	Amendment	By	Chk*	Date
D	SSDA SUBMISSION	FJ	DJ	21/11/10
C	DRAFT SSDA SUBMISSION	MB	DJ	21/11/01
B	DRAFT SSDA SUBMISSION	MB	DJ	21/10/25
A	DRAFT SSDA SUBMISSION	MB	DJ	21/10/01

*Registered Architect
DHJ Diane H Jones NSW Arch 4778

Consultants

Client

Architect
PTW Architects
Level 11, 88 Phillip Street
Sydney NSW 2000 Australia
T +61 2 9232 5877
ptw.com.au

Peddie Thorp & Walker P/L
ABN 23 000 454 624
trading as PTW Architects

NSW Nominated Architects
S Parsons Architect No.6098
D Jones Architect No.4778

0 1 2 5 8m
1 : 600 @ A1
Project PA030471
GLENWOOD HIGH SCHOOL
FORMAN AVENUE, GLENWOOD, NSW
2768
Status
SSDA SUBMISSION

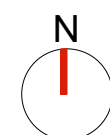
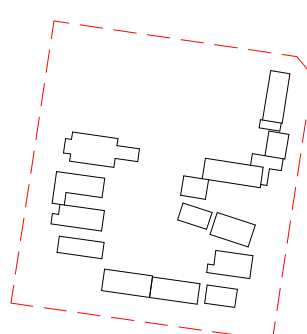
Title
SSDA
SITE - AERIAL VIEW - EXISTING
Drawing Number
DA-AR-0011
Revision
D



1 AERIAL VIEW - SITE CONTEXT AND COMMUNITY FACILITIES



2 AERIAL VIEW - ACCESS POINTS AND FACILITIES



Rev	Amendment	By	Chk*	Date
D	SSDA SUBMISSION	FJ	DJ	21/11/10
C	DRAFT SSDA SUBMISSION	MB	DJ	21/11/01
B	DRAFT SSDA SUBMISSION	MB	DJ	21/10/25
A	DRAFT SSDA SUBMISSION	MB	DJ	21/10/01

*Registered Architect		
DHJ	Diane H Jones	NSW Arch 4778

Consultants

Client



Education

Architect
PTW Architects
Level 11, 88 Phillip Street
Sydney NSW 2000 Australia
T +61 2 9232 5877
ptw.com.au

Peddle Thorp & Walker P/L
ABN 23 000 454 624
trading as PTW Architects

NSW Nominated Architects
S Parsons Architect No.6098
D Jones Architect No.4778



0 1 2 5 8m

As @ A1

indicated

Project PA030471

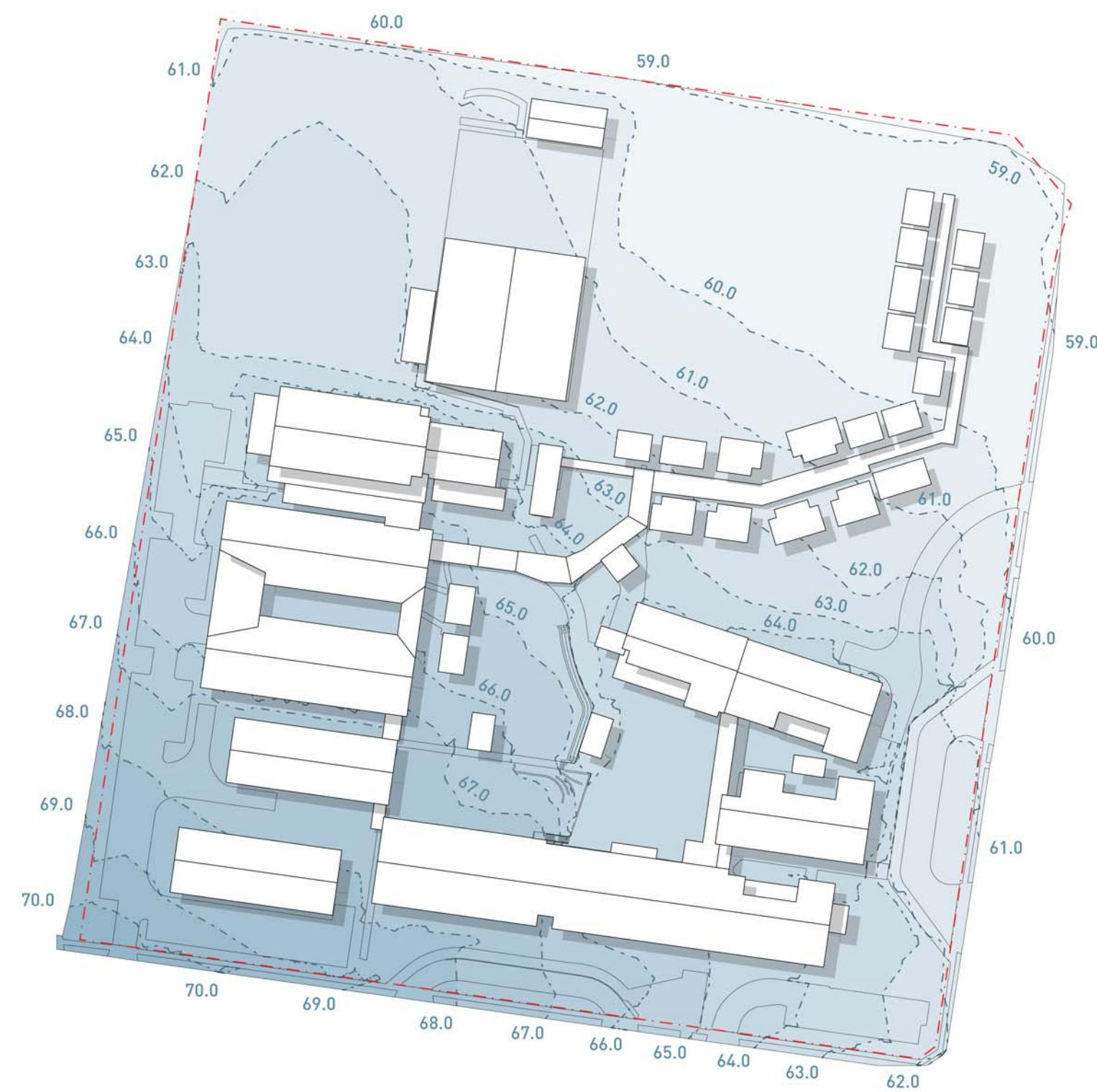
GLENWOOD HIGH SCHOOL

FORMAN AVENUE, GLENWOOD, NSW

2768

Status

SSDA SUBMISSION



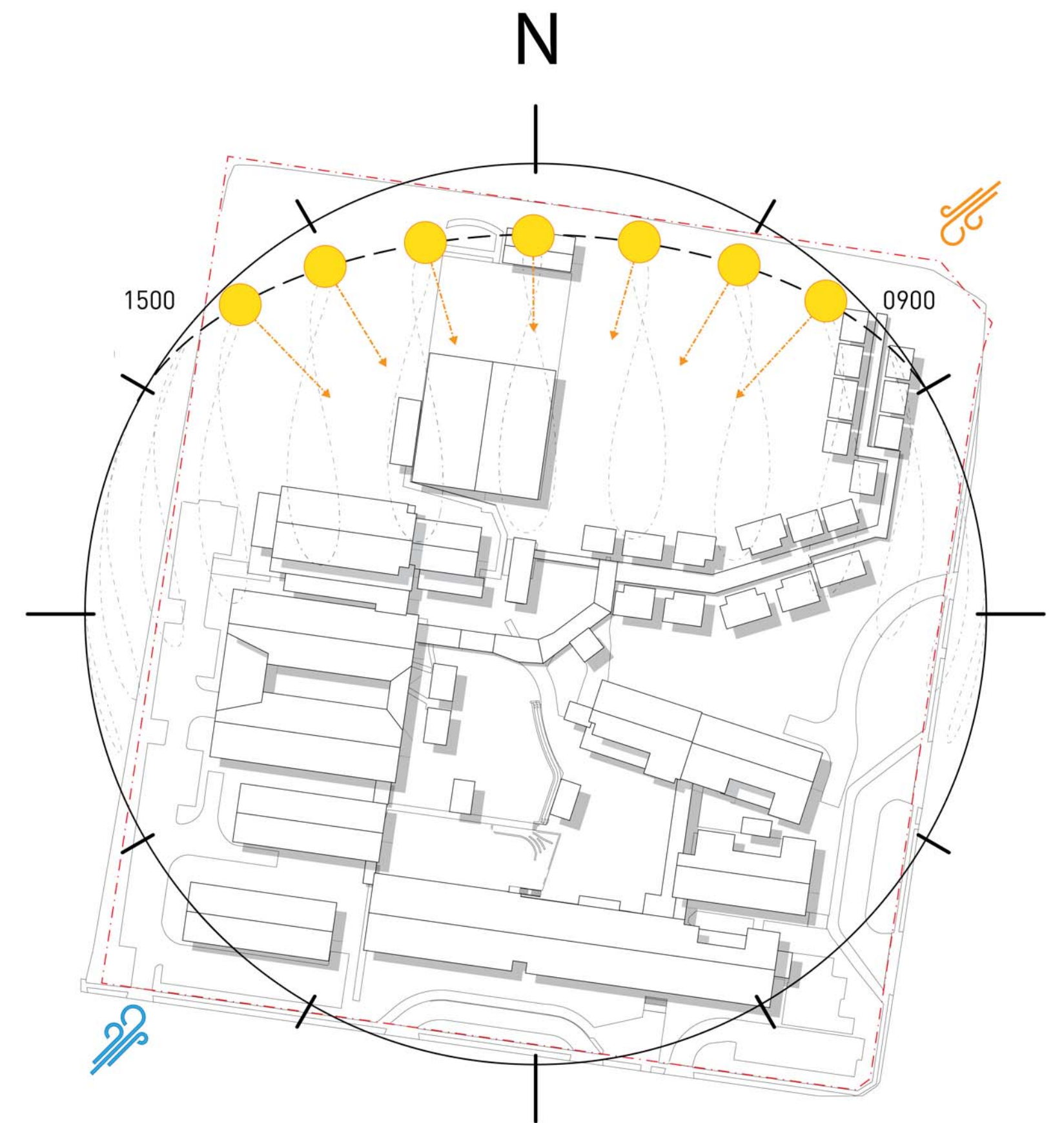
- Site boundary
- 1.0m contour lines

1 LEVELS AND CONTOURS
1 : 1500 @A1



- Site boundary
- Open space (soft)
- Open space (hard)
- Cumberland Plain Woodland
- High significance tree
- Medium significance tree
- Low significance tree

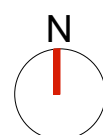
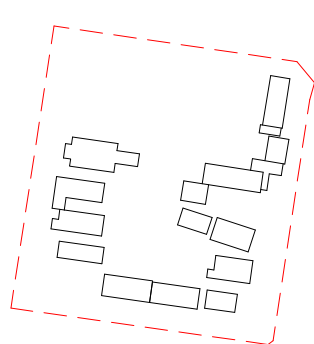
2 SIGNIFICANT TREES AND OPEN SPACE
1 : 1500 @A1



- Site boundary
- Winter prevailing winds
- Summer prevailing winds

3 SEASONAL WINDS AND SUNPATH ANALYSIS (21 JUNE 2021)
1 : 1500 @A1

Key Plan:



Drawing Disclaimer:
Do not scale from drawings.
Verify all dimensions on site before commencing work.
Copying or reproduction of this drawing is strictly prohibited without the consent of PTW Architects

Note
PTW takes no responsibility for external building elements. Anything connected with any design, materials selection, construction or installation of any cladding, facade or external building element must be checked by and remains the responsibility of others, including suitably qualified experts as may be required.

Rev	Amendment	By	Chk*	Date
D	SSDA SUBMISSION	FJ	DJ	21/11/10
C	DRAFT SSDA SUBMISSION	MB	DJ	21/11/01
B	DRAFT SSDA SUBMISSION	MB	DJ	21/10/25
A	DRAFT SSDA SUBMISSION	MB	DJ	21/10/01

*Registered Architect
DHJ Diane H Jones NSW Arch 4778

Consultants

Client



Education

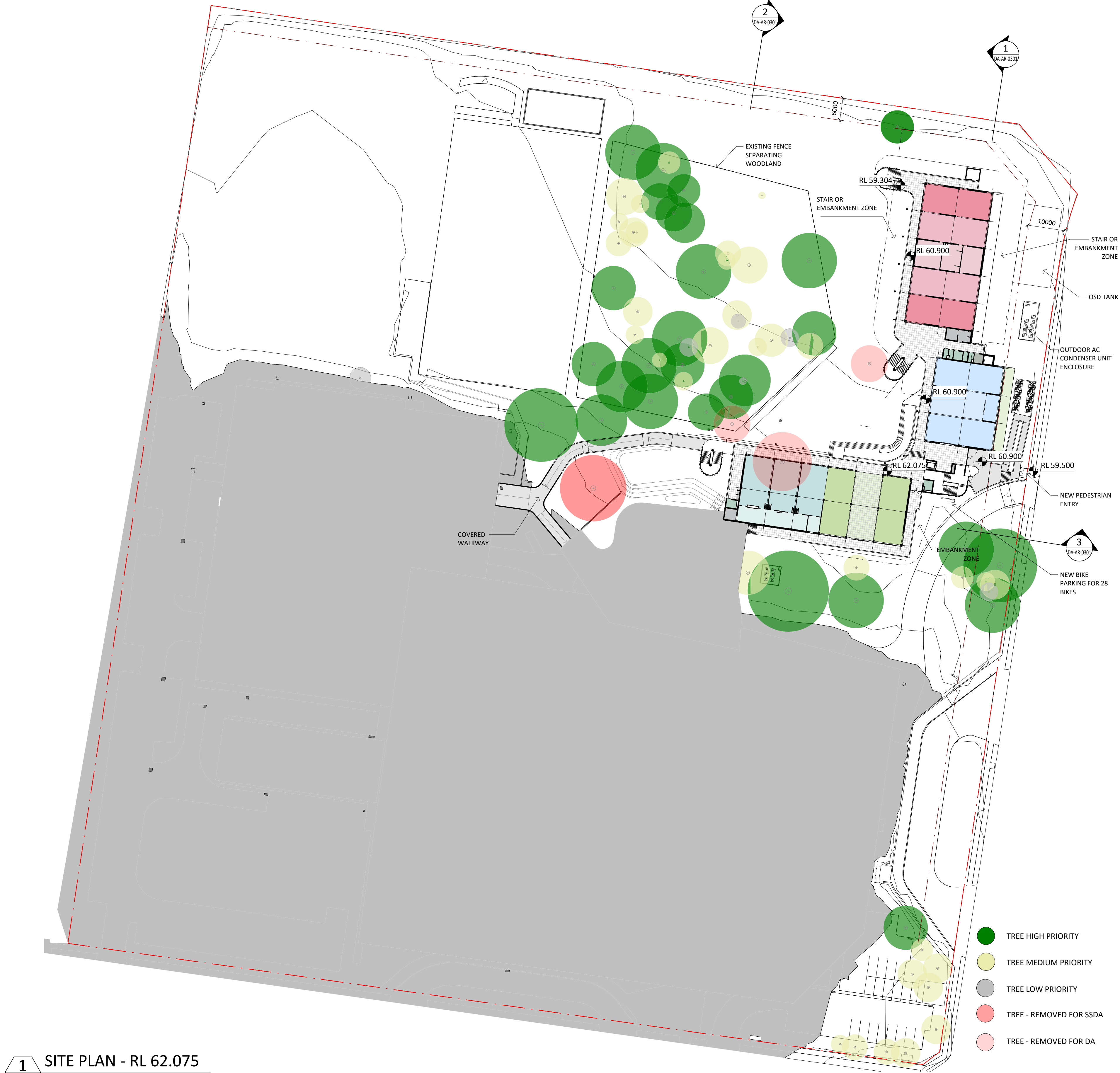
Architect
PTW Architects
Level 11, 88 Phillip Street
Sydney NSW 2000 Australia
T +61 2 9232 5877
ptw.com.au



1 : @ A1
1500
Project PA030471
GLENWOOD HIGH SCHOOL
FORMAN AVENUE, GLENWOOD, NSW
2768
Status
SSDA SUBMISSION

Title
SSDA
SITE ANALYSIS
Drawing Number
DA-AR-0013

Revision
D



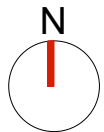
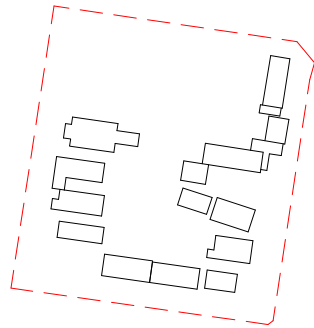
LEGEND

- ACCESSIBLE WC
- COMMS
- GENERAL LEARNING SPACE
- SCIENCE GENERAL LEARNING SPACE
- SENIOR SHARED LEARNING
- STAFF AMENITIES
- STORAGE UNIT / COMMS
- STUDENT AMENITIES
- VISUAL ARTS GENERAL LEARNING SPACE
- VISUAL ARTS WORKSHOP

- TREE HIGH PRIORITY
- TREE MEDIUM PRIORITY
- TREE LOW PRIORITY
- TREE - REMOVED FOR SSDA
- TREE - REMOVED FOR DA

1 SITE PLAN - RL 62.075
1 : 600 @A1

Key Plan:



Drawing Disclaimer:
Do not scale from drawings.
Verify all dimensions on site before commencing work.
Copying or reproduction of this drawing is strictly prohibited without the consent of PTW Architects

Note
PTW takes no responsibility for external building elements. Anything connected with any design, materials selection, construction or installation of any cladding, facade or external building element must be checked by and remains the responsibility of others, including suitably qualified experts as may be required.

Rev	Amendment	By	Chk*	Date
D	SSDA SUBMISSION	FJ	DJ	21/11/10
C	DRAFT SSDA SUBMISSION	MB	DJ	21/11/01
B	DRAFT SSDA SUBMISSION	MB	DJ	21/10/25
A	DRAFT SSDA SUBMISSION	MB	DJ	21/10/01

*Registered Architect
DHJ Diane H Jones NSW Arch 4778

Consultants

Client



Education

Architect
PTW Architects
Level 11, 88 Phillip Street
Sydney NSW 2000 Australia
T +61 2 9232 5877
ptw.com.au



As indicated
Project PA030471
Status
SSDA SUBMISSION

0 36 48
Title
SSDA
SITE PLAN - RL 62.075
Drawing Number
DA-AR-0020
Revision
D

GLENWOOD HIGH SCHOOL
FORMAN AVENUE, GLENWOOD, NSW
2768

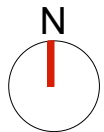
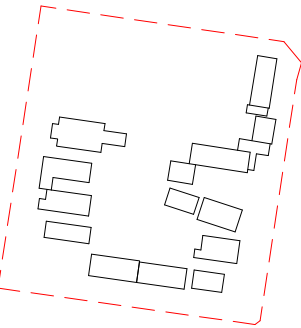


- LEGEND
- NEW-ADMINISTRATION UNIT
 - NEW-CIRCULATION
 - NEW-FOOD TECH - MATERIALS LEARNING UNIT
 - NEW-GENERAL LEARNING UNIT
 - NEW-SHARED LEARNING SPACE
 - NEW-LIBRARY UNIT
 - NEW-OUTDOOR COVERED LEARNING
 - NEW-PERFORMING ARTS UNIT
 - NEW-PERFORM ARTS WORKSHOP
 - NEW-PERFORM ARTS STORE
 - NEW-SCIENCE LEARNING UNIT
 - NEW-SCIENCE LABORATORY
 - NEW-SCIENCE STORE
 - NEW - STAFF AMENITY
 - NEW-STAFF UNIT
 - NEW-STORAGE UNIT / COMMS
 - NEW-STUDENT AMENITIES
 - NEW-STAFF AMENITIES
 - NEW-SUPPORT LEARNING UNIT
 - NEW-WOOD/METAL - MATERIALS LEARNING UNIT
 - EXIST-ADMINISTRATION
 - EXIST-CANTEEN UNIT
 - EXIST-CIRCULATION
 - EXIST-FITNESS LEARNING UNI
 - EXIST-GENERAL LEARNING UNIT
 - EXIST-MOVEMENT COMPLEX
 - EXIST-STORAGE UNIT / COMMS
 - EXIST-STUDENT AMENITIES
 - EXIST-SUPPORT LEARNING UNIT
 - EXIST-WOOD/METAL - MATERIALS LEARNING UNIT

- TREE HIGH PRIORITY
- TREE MEDIUM PRIORITY
- TREE LOW PRIORITY
- TREE - REMOVED FOR SSDA
- TREE - REMOVED FOR DA

1 SITE PLAN - RL 65.975
1 : 600 @A1

Key Plan:



Drawing Disclaimer:
Do not scale from drawings.
Verify all dimensions on site before commencing work.
Copying or reproduction of this drawing is strictly prohibited without the consent of PTW Architects

Note
PTW takes no responsibility for external building elements. Anything connected with any design, materials selection, construction or installation of any cladding, facade or external building element must be checked by and remains the responsibility of others, including suitably qualified experts as may be required.

Rev	Amendment	By	Chk*	Date
D	SSDA SUBMISSION	FJ	DJ	21/11/10
C	DRAFT SSDA SUBMISSION	MB	DJ	21/11/01
B	DRAFT SSDA SUBMISSION	MB	DJ	21/10/25
A	DRAFT SSDA SUBMISSION	MB	DJ	21/10/01

*Registered Architect
DHJ Diane H Jones NSW Arch 4778

Consultants

Client



Education

Architect
PTW Architects
Level 11, 88 Phillip Street
Sydney NSW 2000 Australia
T +61 2 9232 5877
ptw.com.au

Peddie Thorp & Walker P/L
ABN 23 000 454 624
trading as PTW Architects

NSW Nominated Architects
S Parsons Architect No.6098
D Jones Architect No.4778

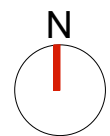
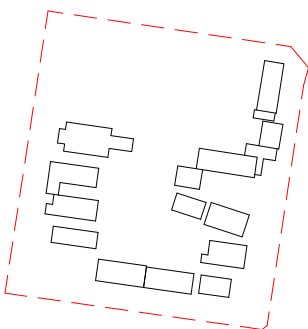


0 36 48
As indicated
Project PA030471
Status
SSDA SUBMISSION

Title
SSDA
SITE PLAN - RL 65.975
Drawing Number
DA-AR-0021
Revision
D

1 SITE PLAN - RL 69.875
1 : 600 @A1

Key Plan:



Drawing Disclaimer:
Do not scale from drawings.
Verify all dimensions on site before commencing work.
Copying or reproduction of this drawing is strictly prohibited without the consent of PTW Architects

Note
PTW takes no responsibility for external building elements. Anything connected with any design, materials selection, construction or installation of any cladding, facade or external building element must be checked by and remains the responsibility of others, including suitably qualified experts as may be required.

Rev	Amendment	By	Chk*	Date
D	SSDA SUBMISSION	FJ	DJ	21/11/10
C	DRAFT SSDA SUBMISSION	MB	DJ	21/11/01
B	DRAFT SSDA SUBMISSION	MB	DJ	21/10/25
A	DRAFT SSDA SUBMISSION	MB	DJ	21/10/01

*Registered Architect	Client
DHJ Diane H Jones NSW Arch 4778	

Consultants	Client



Education

Architect
PTW Architects
Level 11, 88 Phillip Street
Sydney NSW 2000 Australia
T +61 2 9232 5877
ptw.com.au

Peddie Thorp & Walker P/L
ABN 23 000 454 624
trading as PTW Architects

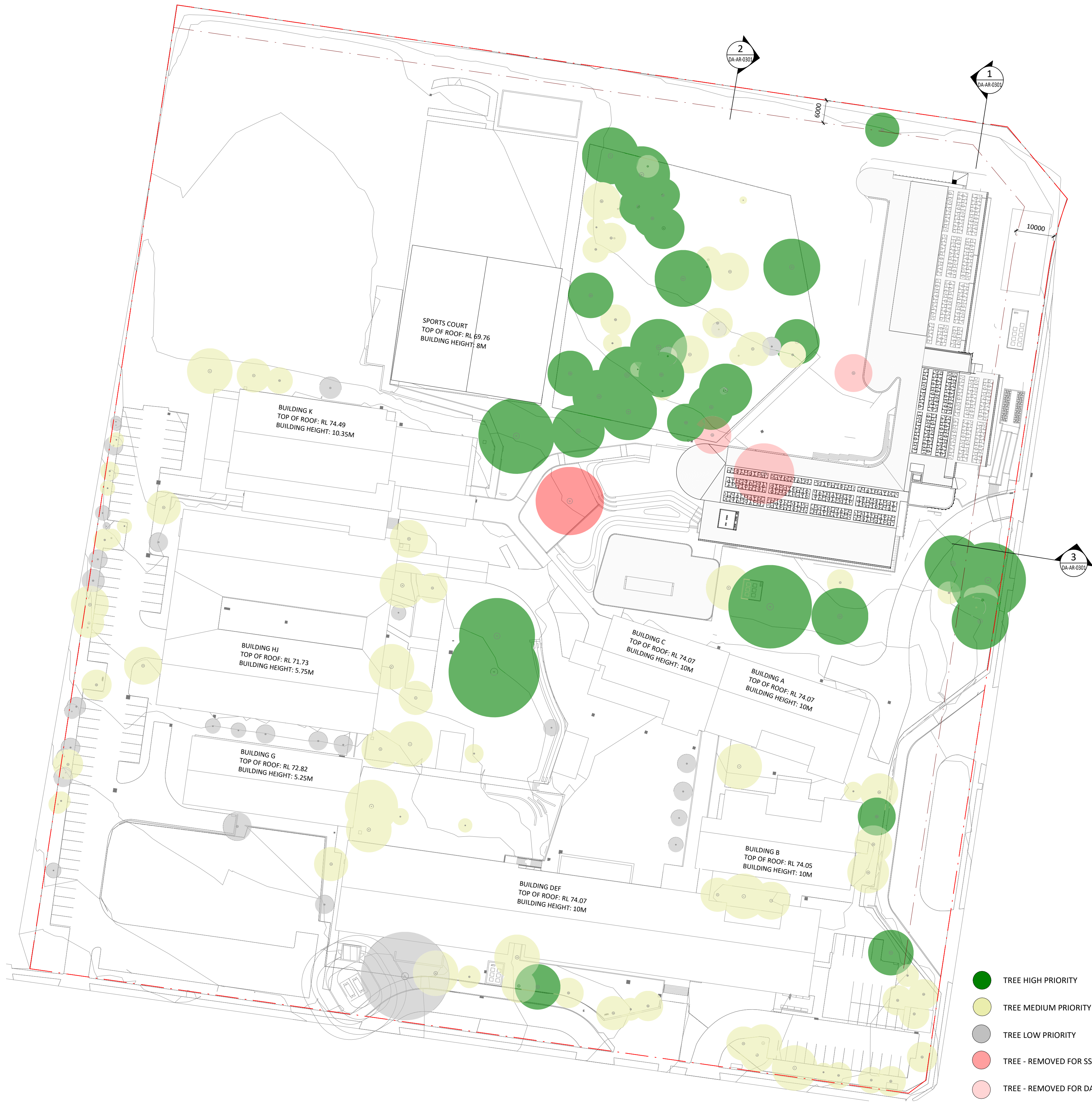
NSW Nominated Architects
S Parsons Architect No.5098
D Jones Architect No.4778



0 36 48
As indicated
@ A1
Project PA030471
GLENWOOD HIGH SCHOOL
FORMAN AVENUE, GLENWOOD, NSW
2768
Status
SSDA SUBMISSION

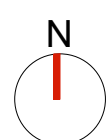
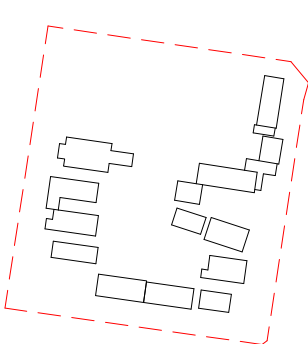
Title
SSDA
SITE PLAN - RL 69.875
Drawing Number
DA-AR-0022

Revision
D



1 SITE PLAN - ROOF
1 : 600

Key Plan:



Drawing Disclaimer:
Do not scale from drawings.
Verify all dimensions on site before commencing work.
Copying or reproduction of this drawing is strictly prohibited without the consent of PTW Architects

Note
PTW takes no responsibility for external building elements. Anything connected with any design, materials selection, construction or installation of any cladding, facade or external building element must be checked by and remains the responsibility of others, including suitably qualified experts as may be required.

Rev	Amendment	By	Chk*	Date
D	SSDA SUBMISSION	FJ	DJ	21/11/10
C	DRAFT SSDA SUBMISSION	MB	DJ	21/11/01
B	DRAFT SSDA SUBMISSION	MB	DJ	21/10/25
A	DRAFT SSDA SUBMISSION	MB	DJ	21/10/01

*Registered Architect
DHJ Diane H Jones NSW Arch 4778

Consultants

Client



Education

Architect
PTW Architects
Level 11, 88 Phillip Street
Sydney NSW 2000 Australia
T +61 2 9232 5877
ptw.com.au

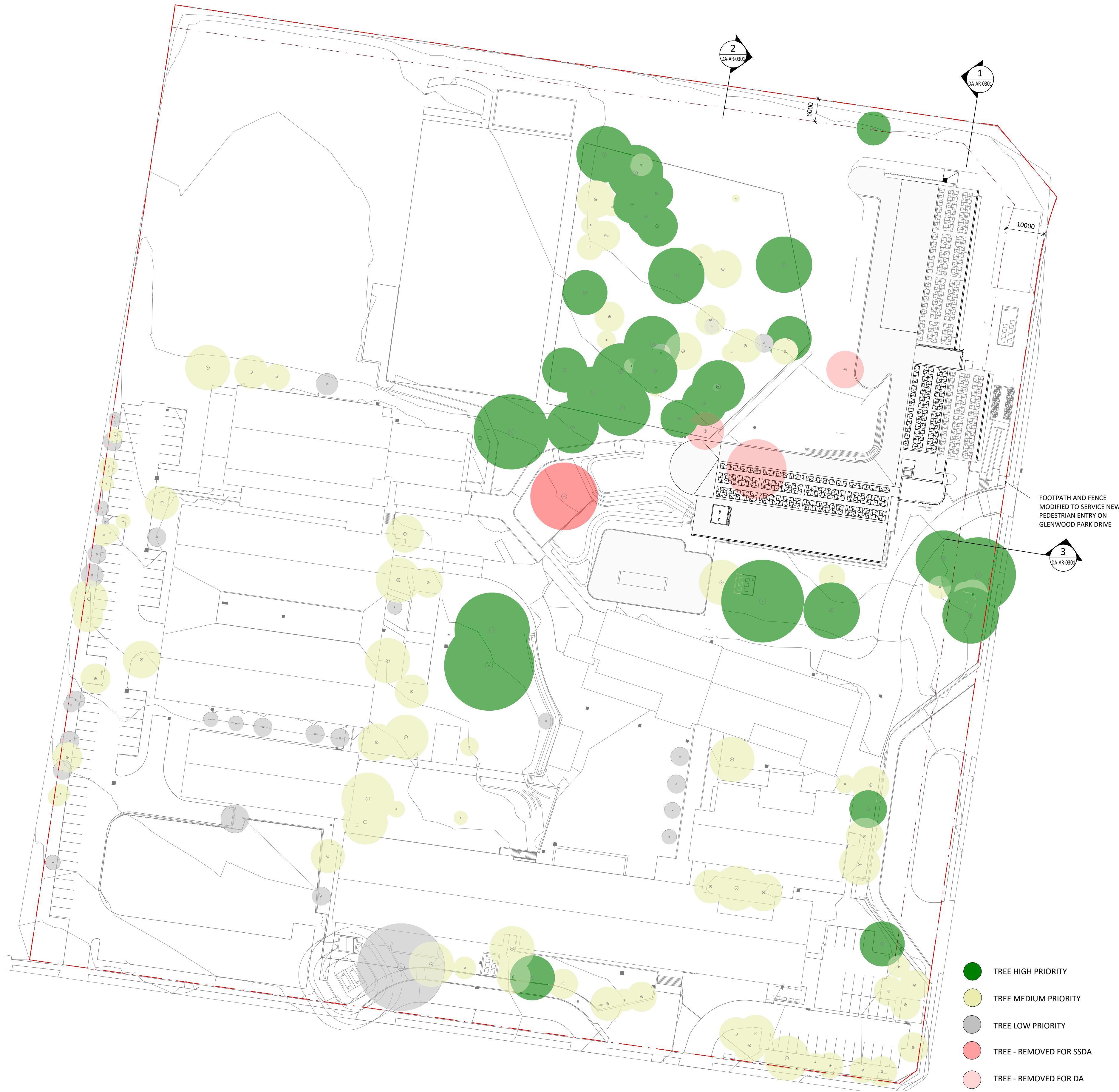


Architect
PTW Architects
Level 11, 88 Phillip Street
Sydney NSW 2000 Australia
T +61 2 9232 5877
ptw.com.au

Architect
PTW Architects
Level 11, 88 Phillip Street
Sydney NSW 2000 Australia
T +61 2 9232 5877
ptw.com.au

Architect
PTW Architects
Level 11, 88 Phillip Street
Sydney NSW 2000 Australia
T +61 2 9232 5877
ptw.com.au

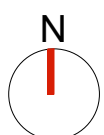
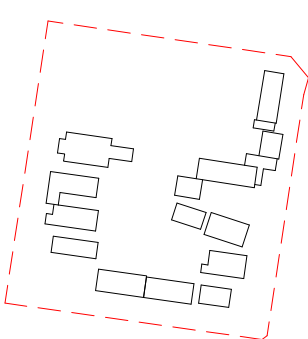
Architect
PTW Architects
Level 11, 88 Phillip Street
Sydney NSW 2000 Australia
T +61 2 9232 5877
ptw.com.au



1 SITE PLAN - ROOF
1 : 600 @A1

- TREE HIGH PRIORITY
- TREE MEDIUM PRIORITY
- TREE LOW PRIORITY
- TREE - REMOVED FOR SSDA
- TREE - REMOVED FOR DA

Key Plan:



Drawing Disclaimer:
Do not scale from drawings.
Verify all dimensions on site before commencing work.
Copying or reproduction of this drawing is strictly prohibited without the consent of PTW Architects

Note
PTW takes no responsibility for external building elements. Anything connected with any design, materials selection, construction or installation of any cladding, facade or external building element must be checked by and remains the responsibility of others, including suitably qualified experts as may be required.

Rev	Amendment	By	Chk*	Date
C	SSDA SUBMISSION	FJ	DJ	21/11/10
B	DRAFT SSDA SUBMISSION	MB	DJ	21/11/01
A	DRAFT SSDA SUBMISSION	MB	DJ	21/10/25

*Registered Architect
DHJ Diane H Jones NSW Arch 4778

Consultants

Client



Education

Architect
PTW Architects
Level 11, 88 Phillip Street
Sydney NSW 2000 Australia
T +61 2 9232 5877
ptw.com.au

Peddie Thorp & Walker P/L
ABN 23 000 454 624
trading as PTW Architects

NSW Nominated Architects
S Parsons Architect No.6098
D Jones Architect No.4778



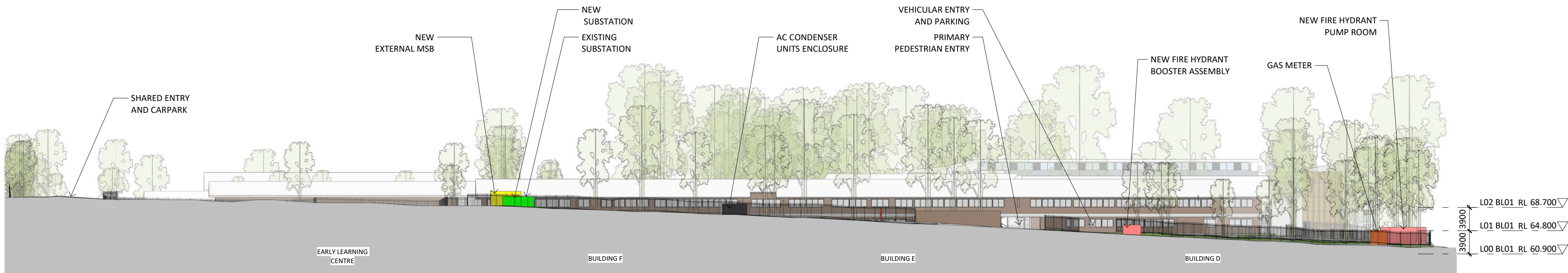
0 36 48
As indicated
Project PA030471
GLENWOOD HIGH SCHOOL
FORMAN AVENUE, GLENWOOD, NSW
2768
Status
SSDA SUBMISSION

Title
SSDA
PUBLIC DOMAIN PLAN
Drawing Number
DA-AR-0024

Revision
C

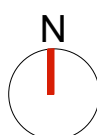
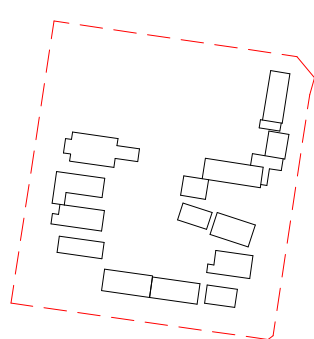


1 ELEVATION FROM GLENWOOD PARK DRIVE
1 : 500 @A1



2 ELEVATION FROM FORMAN AVENUE
1 : 500 @A1

Key Plan:



Drawing Disclaimer:
Do not scale from drawings.
Verify all dimensions on site before commencing work.
Copying or reproduction of this drawing is strictly prohibited without the consent of PTW Architects

Note
PTW takes no responsibility for external building elements. Anything connected with any design, materials selection, construction or installation of any cladding, facade or external building element must be checked by and remains the responsibility of others, including suitably qualified experts as may be required.

Rev	Amendment	By	Chk*	Date
D	SSDA SUBMISSION	FJ	DJ	21/11/10
C	DRAFT SSDA SUBMISSION	MB	DJ	21/11/01
B	DRAFT SSDA SUBMISSION	MB	DJ	21/10/25
A	DRAFT SSDA SUBMISSION	MB	DJ	21/10/01

*Registered Architect
DHJ Diane H Jones NSW Arch 4778

Consultants

Client



Education

Architect
PTW Architects
Level 11, 88 Phillip Street
Sydney NSW 2000 Australia
T +61 2 9232 5877
ptw.com.au

Peddie Thorp & Walker P/L
ABN 23 000 454 624
trading as PTW Architects

NSW Nominated Architects
S Parsons Architect No.6098
D Jones Architect No.4778



0 1 2 5 8m
1 : 500 @ A1

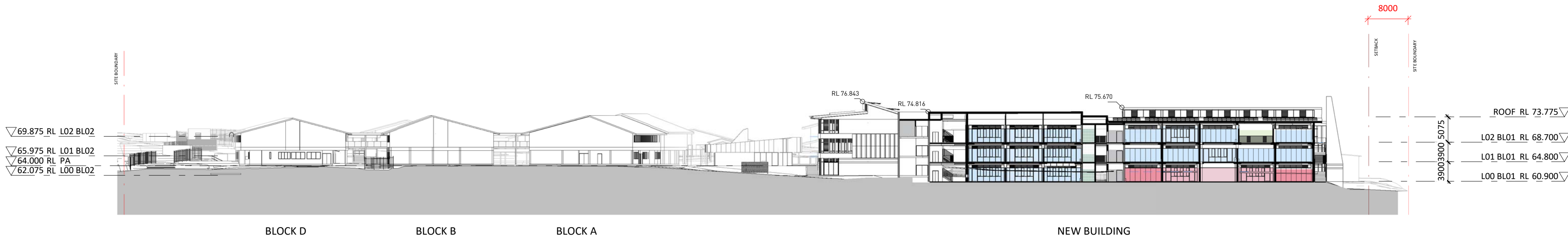
Project PA030471
GLENWOOD HIGH SCHOOL
FORMAN AVENUE, GLENWOOD, NSW
2768

Status
SSDA SUBMISSION

Title
SSDA
STREET ELEVATION

Drawing Number
DA-AR-0201

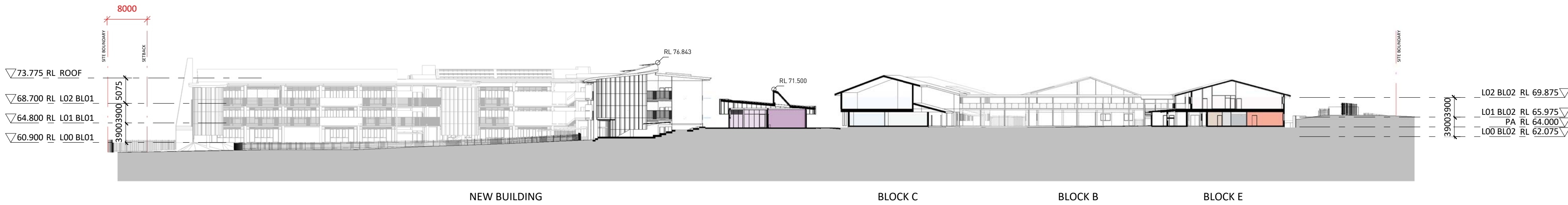
Revision
D



1 SECTION A
1 : 600

LEGEND

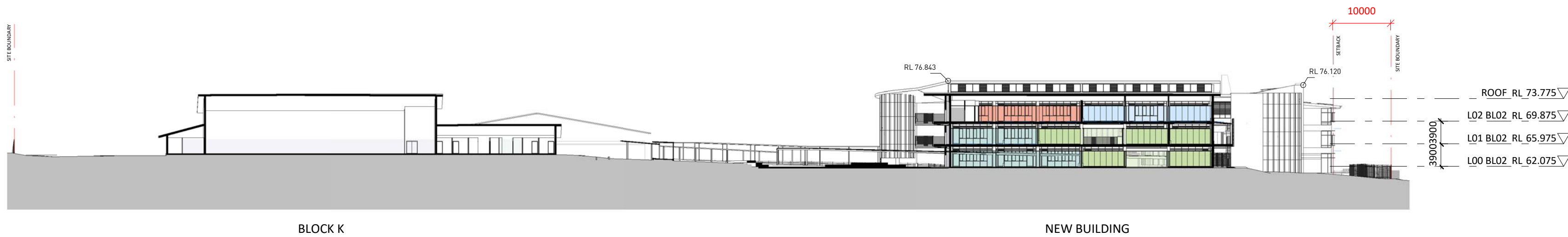
- NEW-GENERAL LEARNING UNIT
- NEW-SHARED LEARNING SPACE
- NEW-OUTDOOR COVERED LEARNING
- NEW-STORAGE UNIT / COMMS
- NEW-STUDENT AMENITIES
- NEW-VISUAL ARTS UNIT
- NEW-VISUAL ARTS WORKSHOP
- NEW-VISUAL ARTS STORE



2 SECTION B
1 : 600

LEGEND

- NEW-ADMINISTRATION UNIT
- NEW-CIRCULATION
- NEW-PERFORMING ARTS UNIT
- NEW-PERFORM ARTS WORKSHOP
- NEW-STAFF UNIT
- NEW-STORAGE UNIT / COMMS
- EXIST-FITNESS LEARNING UNI
- EXIST-GENERAL LEARNING UNIT
- EXIST-LIBRARY UNIT
- EXIST-STUDENT AMENITIES

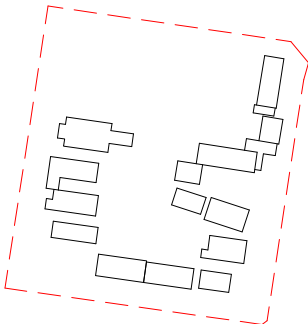


3 SECTION C
1 : 600

LEGEND

- NEW-GENERAL LEARNING UNIT
- NEW-SHARED LEARNING SPACE
- NEW-OUTDOOR COVERED LEARNING
- NEW-SCIENCE LEARNING UNIT
- NEW-SCIENCE LABORATORY
- NEW-STAFF UNIT
- NEW-STORAGE UNIT / COMMS
- NEW-STAFF AMENITIES
- EXIST-MOVEMENT COMPLEX
- EXIST-STUDENT AMENITIES

Key Plan:



Drawing Disclaimer:
Do not scale from drawings.
Verify all dimensions on site before commencing work.
Copying or reproduction of this drawing is strictly prohibited without the consent of PTW Architects

Note
PTW takes no responsibility for external building elements. Anything connected with any design, materials selection, construction or installation of any cladding, facade or external building element must be checked by and remains the responsibility of others, including suitably qualified experts as may be required.

Rev	Amendment	By	Chk*	Date
D	SSDA SUBMISSION	FJ	DJ	21/11/10
C	DRAFT SSDA SUBMISSION	MB	DJ	21/11/01
B	DRAFT SSDA SUBMISSION	MB	DJ	21/10/25
A	DRAFT SSDA SUBMISSION	MB	DJ	21/10/01

*Registered Architect
DHJ Diane H Jones NSW Arch 4778

Consultants

Client



Education

Architect
PTW Architects
Level 11, 88 Phillip Street
Sydney NSW 2000 Australia
T +61 2 9232 5877
ptw.com.au

Peddie Thorp & Walker P/L
ABN 23 000 454 624
trading as PTW Architects

NSW Nominated Architects
S Parsons Architect No.6098
D Jones Architect No.4778



0 36 48
1 : 600 @ A1

Project PA030471

GLENWOOD HIGH SCHOOL
FORMAN AVENUE, GLENWOOD, NSW
2768

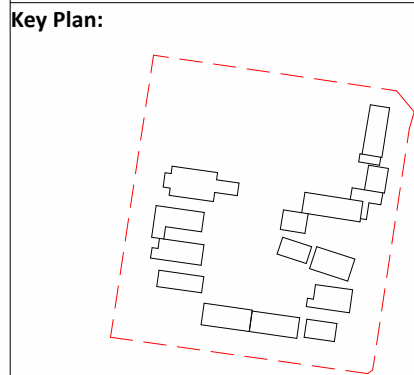
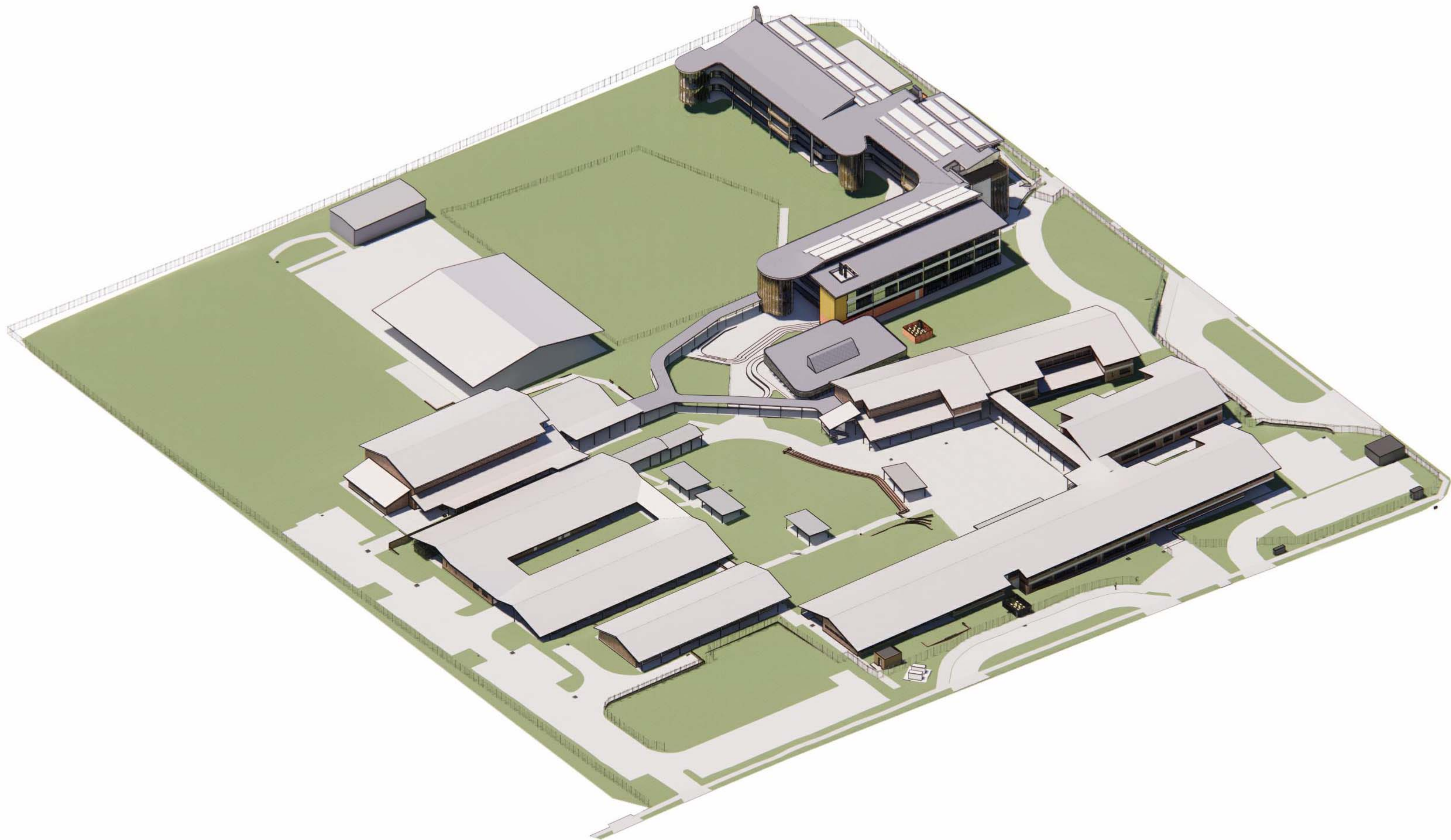
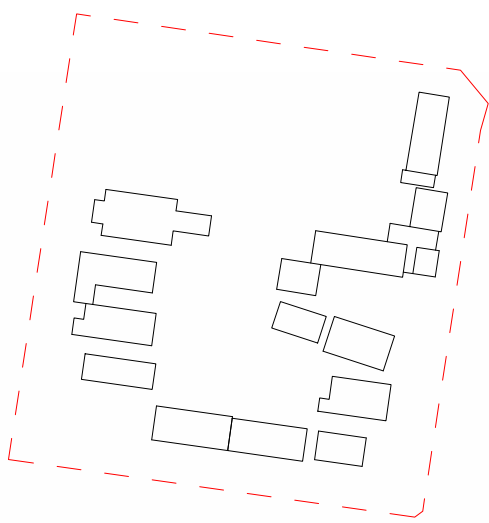
Status
SSDA SUBMISSION

Title
SSDA

SITE SECTIONS

Drawing Number
DA-AR-0301

Revision
D



Drawing Disclaimer:
Do not scale from drawings.
Verify all dimensions on site before commencing work.
Copying or reproduction of this drawing is strictly prohibited without the consent of PTW Architects

Note
PTW takes no responsibility for external building elements. Anything connected with any design, materials selection, construction or installation of any cladding, facade or external building element must be checked by and remains the responsibility of others, including suitably qualified experts as may be required.

Rev	Amendment	By	Chk*	Date
D	SSDA SUBMISSION	FJ	DJ	21/11/10
C	DRAFT SSDA SUBMISSION	MB	DJ	21/11/01
B	DRAFT SSDA SUBMISSION	MB	DJ	21/10/25
A	DRAFT SSDA SUBMISSION	MB	DJ	21/10/01

*Registered Architect		
DHJ	Diane H Jones	NSW Arch 4778

Consultants

Client



Education

Architect
PTW Architects
Level 11, 88 Phillip Street
Sydney NSW 2000 Australia
T +61 2 9232 5877
ptw.com.au

Peddle Thorp & Walker P/L
ABN 23 000 454 624
trading as PTW Architects

NSW Nominated Architects
S Parsons Architect No.6098
D Jones Architect No.4778



Project PA030471
GLENWOOD HIGH SCHOOL
FORMAN AVENUE, GLENWOOD, NSW
2768
Status
SSDA SUBMISSION

Title
SSDA
3D VIEW - AXONOMETRIC
Drawing Number
DA-AR-0401

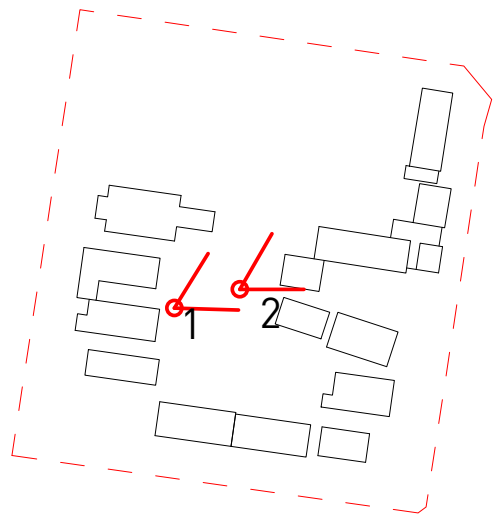
Revision
D



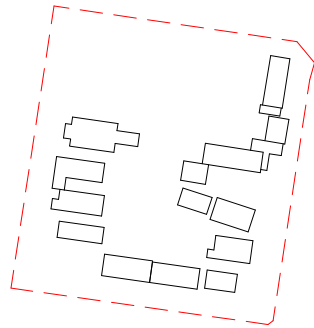
1 VIEW LOOKING EAST FROM THE CANTEEN



2 VIEW LOOKING EAST TOWARDS THE PERFORMANCE ARTS UNIT FROM THE COVERED WALKWAY



Key Plan:



Drawing Disclaimer:
Do not scale from drawings.
Verify all dimensions on site before commencing work.
Copying or reproduction of this drawing is strictly prohibited without the consent of PTW Architects

Note
PTW takes no responsibility for external building elements. Anything connected with any design, materials selection, construction or installation of any cladding, facade or external building element must be checked by and remains the responsibility of others, including suitably qualified experts as may be required.

Rev	Amendment	By	Chk*	Date
D	SSDA SUBMISSION	FJ	DJ	21/11/10
C	DRAFT SSDA SUBMISSION	MB	DJ	21/11/01
B	DRAFT SSDA SUBMISSION	MB	DJ	21/10/25
A	DRAFT SSDA SUBMISSION	MB	DJ	21/10/01

*Registered Architect		
DHJ	Diane H Jones	NSW Arch 4778

Consultants

Client



Education

Architect
PTW Architects
Level 11, 88 Phillip Street
Sydney NSW 2000 Australia
T +61 2 9232 5877
ptw.com.au



Project PA030471
GLENWOOD HIGH SCHOOL
FORMAN AVENUE, GLENWOOD, NSW
2768

Status
SSDA SUBMISSION

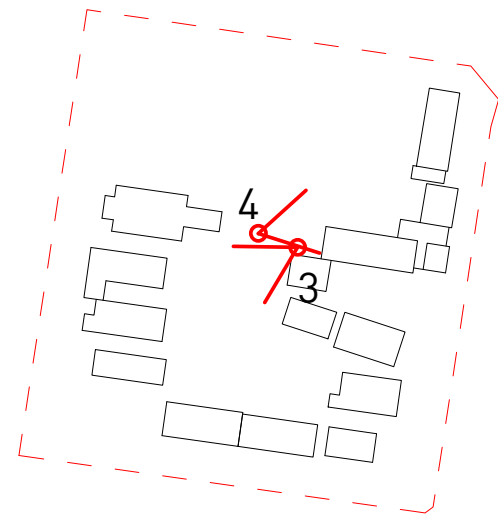
Title
SSDA
3D VIEWS

Drawing Number
DA-AR-0402

Revision
D

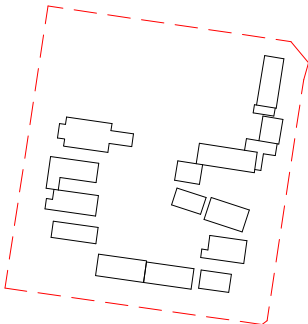


3 - VIEW LOOKING SOUTH WEST FROM THE PERFORMANCE ARTS UNIT



4 - VIEW LOOKING EAST TO THE NEW BUILDING FROM THE COVERED WALKWAY

Key Plan:



Drawing Disclaimer:
Do not scale from drawings.
Verify all dimensions on site before commencing work.
Copying or reproduction of this drawing is strictly prohibited without the consent of PTW Architects

Note
PTW takes no responsibility for external building elements. Anything connected with any design, materials selection, construction or installation of any cladding, facade or external building element must be checked by and remains the responsibility of others, including suitably qualified experts as may be required.

Rev	Amendment	By	Chk*	Date
D	SSDA SUBMISSION	FJ	DJ	21/11/10
C	DRAFT SSDA SUBMISSION	MB	DJ	21/11/01
B	DRAFT SSDA SUBMISSION	MB	DJ	21/10/25
A	DRAFT SSDA SUBMISSION	MB	DJ	21/10/01

*Registered Architect
DHJ Diane H Jones NSW Arch 4778

Consultants

Client



Education

Architect
PTW Architects
Level 11, 88 Phillip Street
Sydney NSW 2000 Australia
T +61 2 9232 5877
ptw.com.au

Peddie Thorp & Walker P/L
ABN 23 000 454 624
trading as PTW Architects

NSW Nominated Architects
S Parsons Architect No 6098
D Jones Architect No 4778



Project PA030471
GLENWOOD HIGH SCHOOL
FORMAN AVENUE, GLENWOOD, NSW
2768

Status
SSDA SUBMISSION

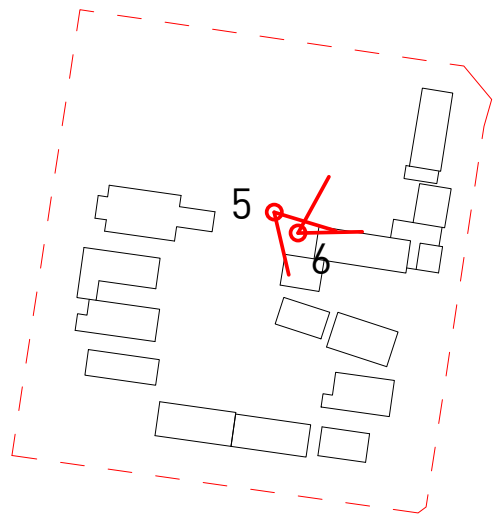
Title
SSDA
3D VIEWS

Drawing Number
DA-AR-0403

Revision
D

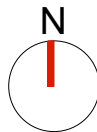
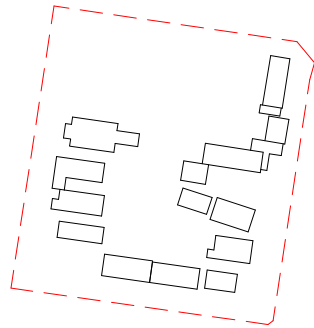


5 - VIEW LOOKING SOUTH EAST TOWARDS THE PERFORMANCE ARTS UNIT FROM THE COVERED WALKWAY



6 - VIEW LOOKING NORTH EAST TOWARDS THE NORTHERN WING OF THE NEW BUILDING

Key Plan:



Drawing Disclaimer:
Do not scale from drawings.
Verify all dimensions on site before commencing work.
Copying or reproduction of this drawing is strictly prohibited without the consent of PTW Architects

Note
PTW takes no responsibility for external building elements. Anything connected with any design, materials selection, construction or installation of any cladding, facade or external building element must be checked by and remains the responsibility of others, including suitably qualified experts as may be required.

Rev	Amendment	By	Chk*	Date
D	SSDA SUBMISSION	FJ	DJ	21/11/10
C	DRAFT SSDA SUBMISSION	MB	DJ	21/11/01
B	DRAFT SSDA SUBMISSION	MB	DJ	21/10/25
A	DRAFT SSDA SUBMISSION	MB	DJ	21/10/01

*Registered Architect		
DHJ	Diane H Jones	NSW Arch 4778

Consultants

Client



Education

Architect
PTW Architects
Level 11, 88 Phillip Street
Sydney NSW 2000 Australia
T +61 2 9232 5877
ptw.com.au

Peddie Thorp & Walker P/L
ABN 23 000 454 624
trading as PTW Architects

NSW Nominated Architects
S Parsons Architect No 6098
D Jones Architect No 4778



Project PA030471

GLENWOOD HIGH SCHOOL
FORMAN AVENUE, GLENWOOD, NSW
2768

Status
SSDA SUBMISSION

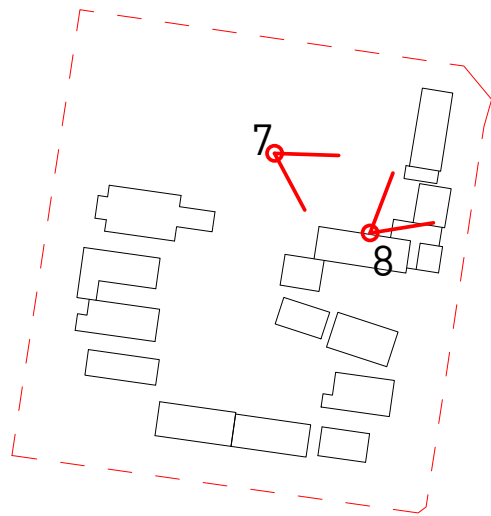
Title
SSDA
3D VIEWS

Drawing Number
DA-AR-0404

Revision
D

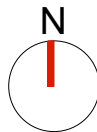
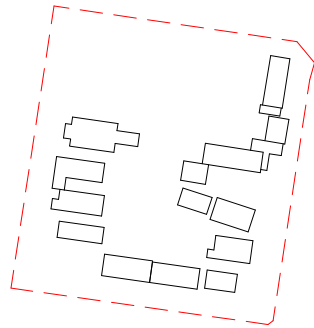


7 - VIEW LOOKING SOUTH EAST TOWARDS THE CENTRAL CORE OF THE NEW BUILDING



8 - VIEW LOOKING NORTH EAST TOWARDS THE NORTHERN WING OF THE NEW BUILDING

Key Plan:



Drawing Disclaimer:
Do not scale from drawings.
Verify all dimensions on site before commencing work.
Copying or reproduction of this drawing is strictly prohibited without the consent of PTW Architects

Note
PTW takes no responsibility for external building elements. Anything connected with any design, materials selection, construction or installation of any cladding, facade or external building element must be checked by and remains the responsibility of others, including suitably qualified experts as may be required.


Rev	Amendment	By	Chk*	Date
D	SSDA SUBMISSION	FJ	DJ	21/11/10
C	DRAFT SSDA SUBMISSION	MB	DJ	21/11/01
B	DRAFT SSDA SUBMISSION	MB	DJ	21/10/25
A	DRAFT SSDA SUBMISSION	MB	DJ	21/10/01

*Registered Architect		
DHJ	Diane H Jones	NSW Arch 4778

Consultants	

Client	
	Education

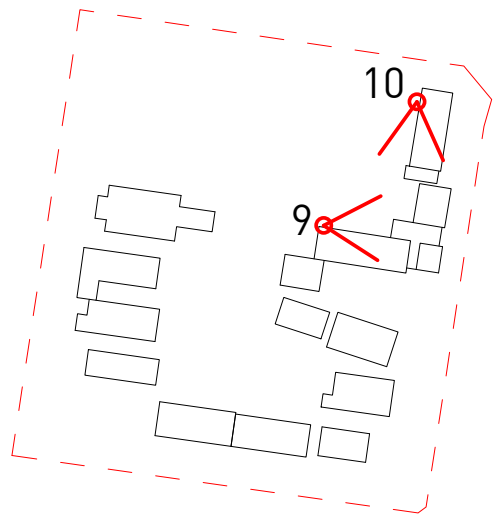
Architect	
PTW Architects Level 11, 88 Phillip Street Sydney NSW 2000 Australia T +61 2 9232 5877 ptw.com.au	<small>Peddie Thorp & Walker P/L ABN 23 000 454 624 trading as PTW Architects</small>
<small>NSW Nominated Architects S Parsons Architect No.6098 D Jones Architect No.4778</small>	

Client	
	GLENWOOD HIGH SCHOOL FORMAN AVENUE, GLENWOOD, NSW 2768
<small>Project PA030471</small>	<small>Status SSDA SUBMISSION</small>

Title	
SSDA 3D VIEWS	
Drawing Number	
DA-AR-0405	
Revision	
D	

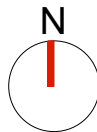
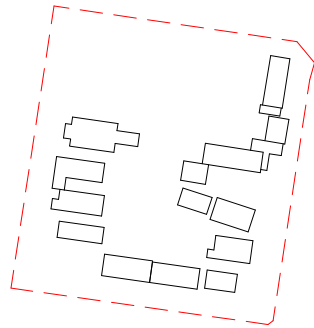


9 - VIEW LOOKING TOWARDS THE NORTHERN WING FROM THE ACCESS BALCONY



10 - VIEW LOOKING SOUTH FROM THE ACCESS BALCONY IN THE NORTHERN WING

Key Plan:



Drawing Disclaimer:
Do not scale from drawings.
Verify all dimensions on site before commencing work.
Copying or reproduction of this drawing is strictly prohibited without the consent of PTW Architects

Note
PTW takes no responsibility for external building elements. Anything connected with any design, materials selection, construction or installation of any cladding, facade or external building element must be checked by and remains the responsibility of others, including suitably qualified experts as may be required.

Rev	Amendment	By	Chk*	Date
D	SSDA SUBMISSION	FJ	DJ	21/11/10
C	DRAFT SSDA SUBMISSION	MB	DJ	21/11/01
B	DRAFT SSDA SUBMISSION	MB	DJ	21/10/25
A	DRAFT SSDA SUBMISSION	MB	DJ	21/10/01

*Registered Architect		
DHJ	Diane H Jones	NSW Arch 4778

Consultants

Client



Education

Architect
PTW Architects
Level 11, 88 Phillip Street
Sydney NSW 2000 Australia
T +61 2 9232 5877
ptw.com.au



Project PA030471
GLENWOOD HIGH SCHOOL
FORMAN AVENUE, GLENWOOD, NSW
2768

Status
SSDA SUBMISSION

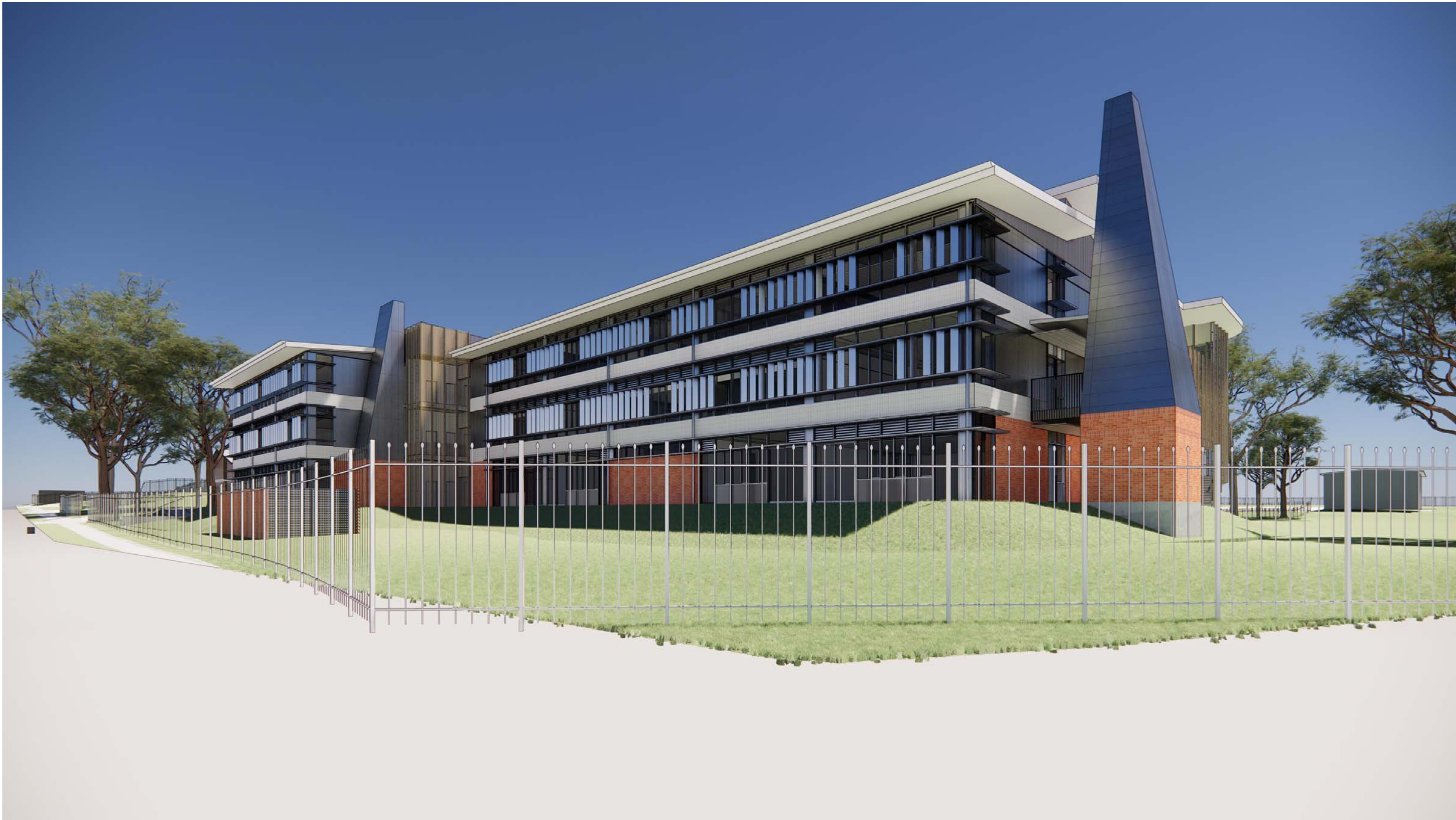
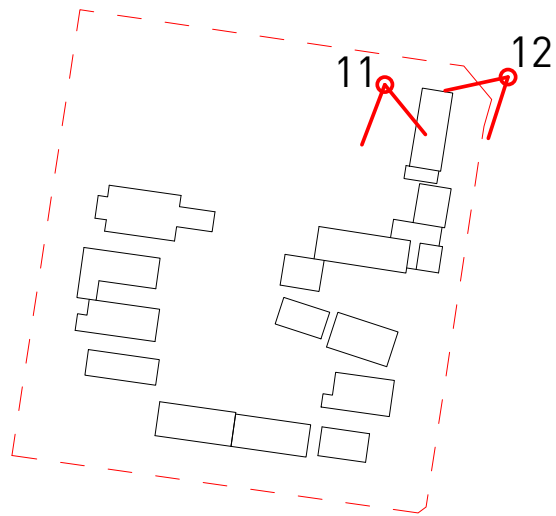
Title
SSDA
3D VIEWS

Drawing Number
DA-AR-0406

Revision
D

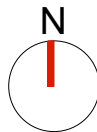
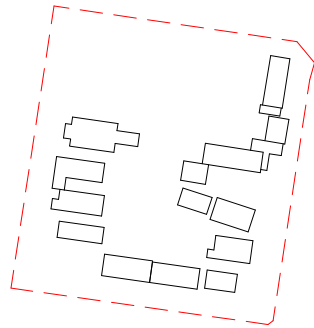


11 - VIEW LOOKING SOUTH EAST TOWARDS THE NEW BUILDING



12 - VIEW LOOKING SOUTH WEST TOWARDS THE NEW BUILDING FROM GLENWOOD PARK DRIVE (TREES REMOVED FOR VIEW)

Key Plan:



Drawing Disclaimer:
Do not scale from drawings.
Verify all dimensions on site before commencing work.
Copying or reproduction of this drawing is strictly prohibited without the consent of PTW Architects

Note
PTW takes no responsibility for external building elements. Anything connected with any design, materials selection, construction or installation of any cladding, facade or external building element must be checked by and remains the responsibility of others, including suitably qualified experts as may be required.

Rev	Amendment	By	Chk*	Date
D	SSDA SUBMISSION	FJ	DJ	21/11/10
C	DRAFT SSDA SUBMISSION	MB	DJ	21/11/01
B	DRAFT SSDA SUBMISSION	MB	DJ	21/10/25
A	DRAFT SSDA SUBMISSION	MB	DJ	21/10/01

*Registered Architect		
DHJ	Diane H Jones	NSW Arch 4778

Consultants

Client



Education

Architect
PTW Architects
Level 11, 88 Phillip Street
Sydney NSW 2000 Australia
T +61 2 9232 5877
ptw.com.au

Peddle Thorp & Walker P/L
ABN 23 000 454 624
trading as PTW Architects

NSW Nominated Architects
S Parsons Architect No 6098
D Jones Architect No 4778



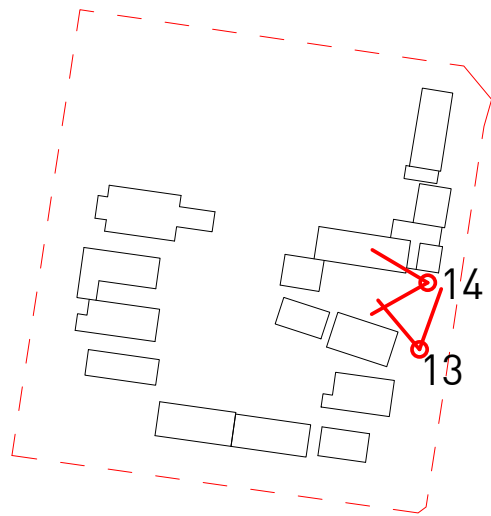
Project PA030471
GLENWOOD HIGH SCHOOL
FORMAN AVENUE, GLENWOOD, NSW
2768

Status
SSDA SUBMISSION

Title
SSDA
3D VIEWS

Drawing Number
DA-AR-0407

Revision
D

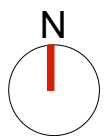
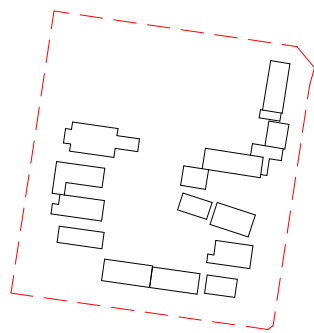


13 - VIEW LOOKING NORTH TOWARDS THE NEW BUILDING FROM BUILDING A



14 - VIEW LOOKING WEST TOWARDS THE PERFORMANCE ARTS UNIT AND THE NEW BUILDING

Key Plan:



Drawing Disclaimer:
Do not scale from drawings.
Verify all dimensions on site before commencing work.
Copying or reproduction of this drawing is strictly prohibited without the consent of PTW Architects

Note
PTW takes no responsibility for external building elements. Anything connected with any design, materials selection, construction or installation of any cladding, facade or external building element must be checked by and remains the responsibility of others, including suitably qualified experts as may be required.

Rev	Amendment	By	Chk*	Date
D	SSDA SUBMISSION	FJ	DJ	21/11/10
C	DRAFT SSDA SUBMISSION	MB	DJ	21/11/01
B	DRAFT SSDA SUBMISSION	MB	DJ	21/10/25
A	DRAFT SSDA SUBMISSION	MB	DJ	21/10/01

*Registered Architect		
DHJ	Diane H Jones	NSW Arch 4778

Consultants

Client



Education

Architect
PTW Architects
Level 11, 88 Phillip Street
Sydney NSW 2000 Australia
T +61 2 9232 5877
ptw.com.au

Peddle Thorp & Walker P/L
ABN 23 000 454 624
trading as PTW Architects

NSW Nominated Architects
S Parsons Architect No.6098
D Jones Architect No.4778



Project PA030471
GLENWOOD HIGH SCHOOL
FORMAN AVENUE, GLENWOOD, NSW
2768

Status
SSDA SUBMISSION

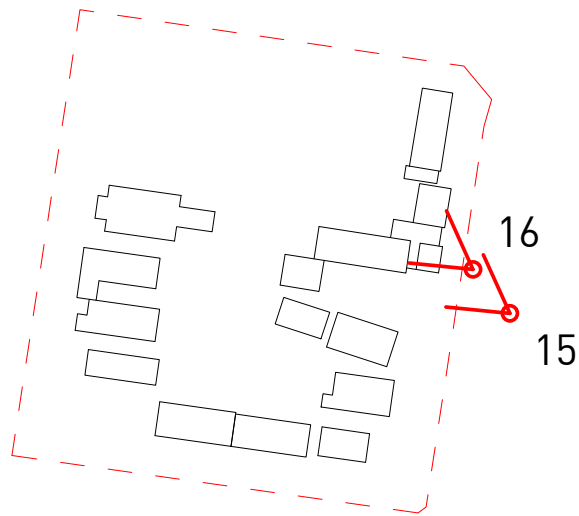
Title
SSDA
3D VIEWS

Drawing Number
DA-AR-0408

Revision
D

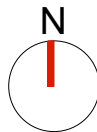
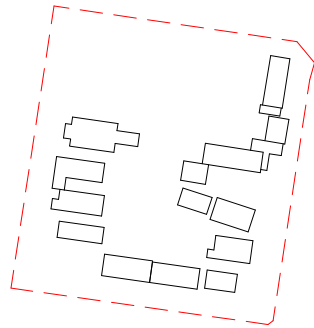


15 - VIEW LOOKING WEST TOWARDS THE NEW BUILDING ENTRY



16 - CLOSE UP VIEW LOOKING WEST TOWARDS NEW BUILDING ENTRY

Key Plan:



Drawing Disclaimer:
Do not scale from drawings.
Verify all dimensions on site before commencing work.
Copying or reproduction of this drawing is strictly prohibited without the consent of PTW Architects

Note
PTW takes no responsibility for external building elements. Anything connected with any design, materials selection, construction or installation of any cladding, facade or external building element must be checked by and remains the responsibility of others, including suitably qualified experts as may be required.

Rev	Amendment	By	Chk*	Date
D	SSDA SUBMISSION	FJ	DJ	21/11/10
C	DRAFT SSDA SUBMISSION	MB	DJ	21/11/01
B	DRAFT SSDA SUBMISSION	MB	DJ	21/10/25
A	DRAFT SSDA SUBMISSION	MB	DJ	21/10/01

*Registered Architect		
DHJ	Diane H Jones	NSW Arch 4778

Consultants

Client



Education

Architect
PTW Architects
Level 11, 88 Phillip Street
Sydney NSW 2000 Australia
T +61 2 9232 5877
ptw.com.au

Peddie Thorp & Walker P/L
ABN 23 000 454 624
trading as PTW Architects

NSW Nominated Architects
S Parsons Architect No.6098
D Jones Architect No.4778



Project PA030471

GLENWOOD HIGH SCHOOL
FORMAN AVENUE, GLENWOOD, NSW
2768

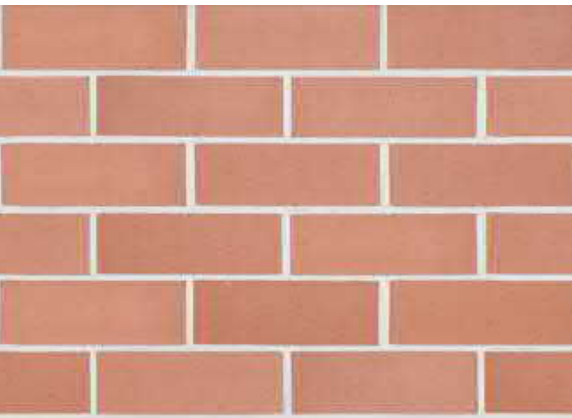
Status
SSDA SUBMISSION

Title
SSDA
3D VIEWS

Drawing Number
DA-AR-0409

Revision
D

New building and Performance arts



BRK-101

Austral Brick
Smooth face brick
Symmetry Terracotta



PAV-101

Concrete /porcelain tiles on pedestals for access balconies



RWS-201

Galvanised steel water pipe and brackets with colorbond steel down pipe transitions from gutter



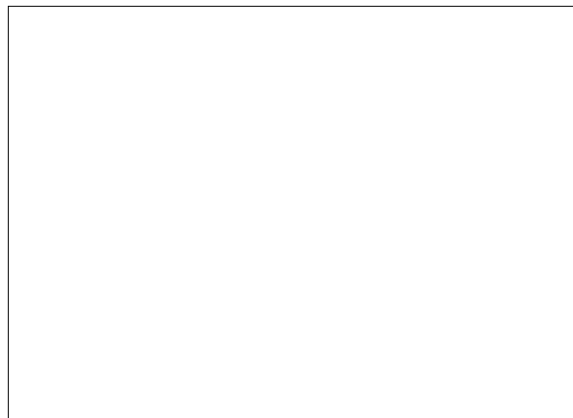
EWS-102

Acoustic Louvres,
Clear Anodised Finish



BRK-102
BRK-103 - SOLDIER COURSE

Austral Brick
Smooth face brick
La Paloma Miro



EWS-101

Universal Anodisers
Anodised aluminium frame
Clear finish



SCN-101

Arcadia
Match Sun-Shading
Arcadia Match Sun-Shading Grating Panels



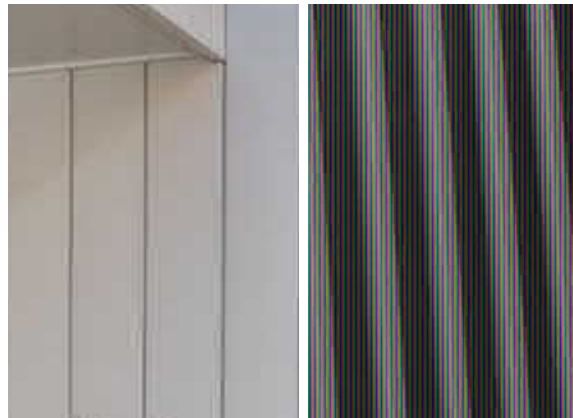
RFS-101
RWS-101

Lysaght
Longline 305 for roof
Colorbond Matt Basalt



BRK-104 - COLOURS TBC -SOLDIER COURSE

Austral Brick
White Glazed Brick
Colours to be selected



CLG-301 CLG-302

Dominion and SnapSeam for Soffit Linings (Standing Seam)
Colour TBC



SCN-102

Arcadia
Louvres Aluminium Extruded box section aluminium
Colours to be confirmed



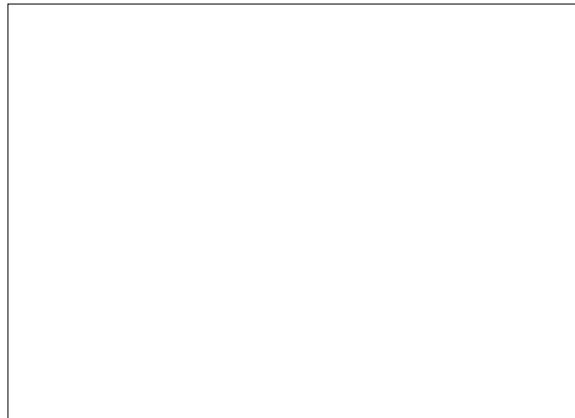
BAL-101

Aluminium slat balustrade panels with galvanised steel framing



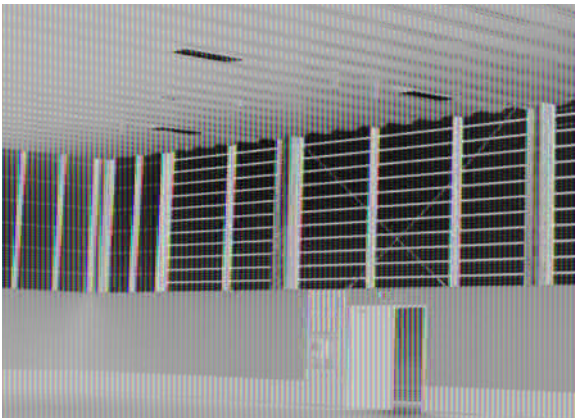
BRK-107 - HIT AND MISS BRICKWORK

Austral Brick
Smooth face brick
Symmetry Terracotta



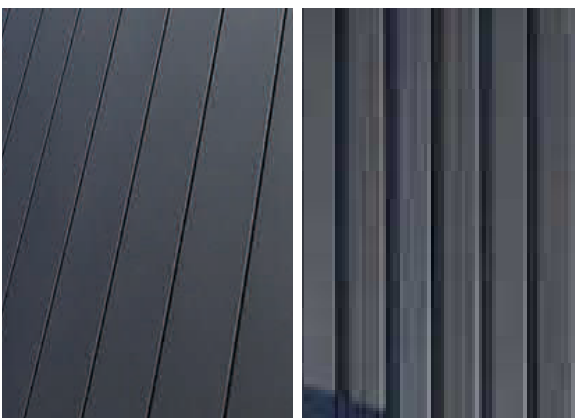
GLS-101

Viridian Comfort Plus: Laminated Glass with Low E Coating, Neutral 59



EWS-201

Fixed metal louvre in framing system



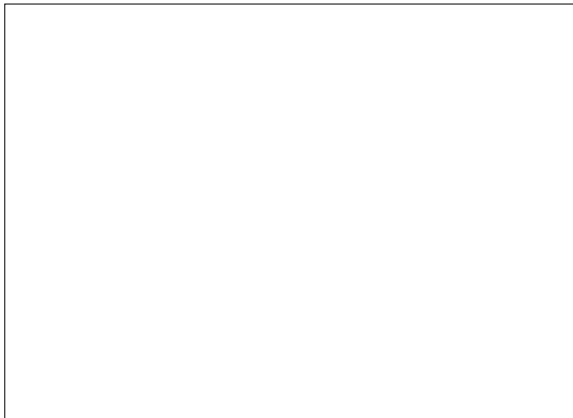
ELG-101 ELG-103

Dominion and SnapSeam panels for wall framing and panelling
Colours TBC



CON-101

Concrete framing
Keim finish for longevity and quality



GLS-103

Viridian VTough: Toughened Glass with Low E Coating, Neutral 59



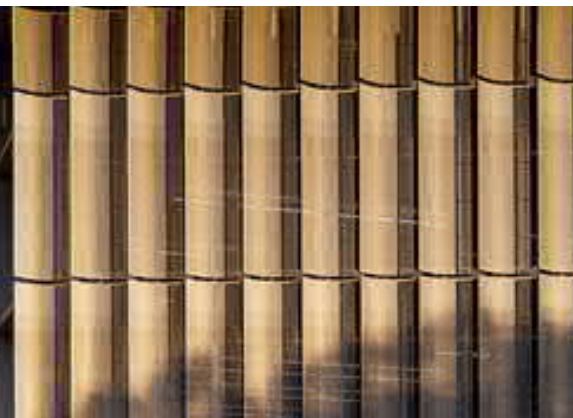
GLS-102

Viridian Comfort Plus: Laminated Glass with Low E Coating, Trans-lucent

New building



Aboriginal weaving
by Jayne Christian
Inspiration for modelled perforated metal screens



SCN-201
SCN-202

Arcadia: Profiled, Perforated Metal Screens and Support System,
Colours to be confirmed



ELG-401

Glazed Tile
For core walls
Colours to be selected



ELG-201

Aluminium cladding
Anodised



ELG-402

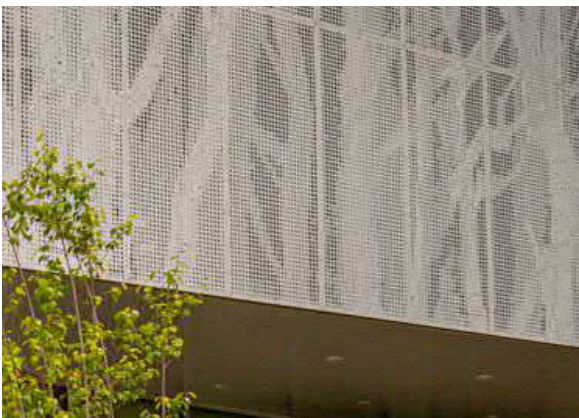
Glazed Tile
Art mural on eastern core wall



CON-201

Concrete relief art wall
Pattern to be confirmed
Keim finish for longevity and quality

Performance Arts



SCN-203

Perforated Metal - Art pattern
Arcadia: Profiled, Perforated Metal Screens and Support System,
Colours and pattern to be confirmed



CON - 301

Concrete bleacher seating

11/9/2021 5:50:59 PM