

**McINTOSH&PHELPS**

**JOHN PALMER  
PUBLIC SCHOOL**

**LANDSCAPE DESIGN  
STATEMENT**

Prepared for:  
NSW Department of Education  
School Infrastructure NSW



Image:  
Robert Polmear, The Ponds Parkland  
<https://www.timeout.com/sydney/attractions/the-ponds-parklands>

08 October 2021

**McINTOSH&PHELPS**  
**ARCHITECTURE**  
**LANDSCAPE ARCHITECTURE**

Suite 311, 350 George Street  
Sydney NSW 2000  
02 9221 1401  
info@mcintoshphelps.com.au  
ABN: 78 612 191 689  
Nominated Architect  
William Phelps ARN 6675  
[www.mcintoshphelps.com.au](http://www.mcintoshphelps.com.au)

**JOHN PALMER**  
**PUBLIC SCHOOL**

**LANDSCAPE DESIGN**  
**STATEMENT**

Prepared for:  
NSW Department of Education  
School Infrastructure NSW

**Report Register**

Project Landscape

Architect & Reviewer: Glenn McIntosh



Issue: A  
Position: Director, Registered Landscape Architect  
McIntosh & Phelps  
Date: 21.10.08

## TABLE OF CONTENTS

Introduction	4
The proposal	4
1.0 Site Wide Landscape Design Strategy	6
1.1 SEPP (Educational Establishments and Child Care Facilities)	16
2.0 Landscape Planting Strategy	8
2.1 Species Selection	8
2.2 Trees to be removed	9
2.3 Cumberland Plain Woodland	10
2.4 Retaining existing trees	10
2.5 Tree canopy cover	10
Appendices	
• Landscape SSDA Drawings	
- DA-LA-0001 Landscape Plan	
- DA-LA-0002 Detail Landscape Plan, Sheet 1	
- DA-LA-0003 Detail Landscape Plan, Sheet 2	
- DA-LA-0004 Detail Landscape Plan, Sheet 3	
- DA-LA-0005 Detail Landscape Plan, Sheet 4	
- DA-LA-0010 Tree Canopy Cover	
- DA-LA-0020 Landscape Materials and Finishes	
- DA-LA-0021 Landscape Planting	

## INTRODUCTION

This Landscape Design Statement accompanies an Environmental Impact Statement (EIS) pursuant to Part 4 of the Environmental Planning and Assessment Act 1979 (EP&A Act) in support of a State Significant Development Application (SSD - 23330227).

The development is for upgrading works comprising alterations and additions to John Palmer Public School at 85 The Ponds Boulevard, The Ponds.

The site is legally described as Lot 1 DP 1131340. The site is roughly rectangular in shape, with a total area of 29,830m<sup>2</sup> and street frontages to Pebble Crescent to the west, Jetty Street to the south and The Ponds Boulevard to the east. The Ponds Shopping Centre adjoins the northern property boundary of the school.

This report addresses the relevant Secretary's Environmental Assessment Requirements (SEARs), identified in the **Table 1**.

### The proposal

The proposed development seeks to upgrade John Palmer Public School. The upgrade consists of the following alterations and additions:

- Construction of a new three storey building facing The Ponds Boulevard which will accommodate 29 Permanent Learning Spaces and 1 new staff room;
- Construction of a one storey new library building;
- Relocation of service access to staff car park off The Ponds Boulevard, including alterations to the existing car park to accommodate service vehicle;
- One-storey extension to and refurbishment of existing School Hall building. The School Hall extension will accommodate ancillary spaces for Out of Hours School Care;
- Building Block D will be re-purposed from an existing library to special program spaces and administration;
- Refurbishment of Building F to provide 1 new support unit;
- Minor additions and internal refurbishments to Building A;and
- Removal of all 20 existing demountable classroom buildings once alterations and additions have been completed; and.
- Ancillary works to support the alterations and additions including landscaping and service provision.

**Table 1**

Planning Secretary's Environmental Assessment Requirements

<b>Planning Secretary's Environment Assessment Requirements</b>		
<b>Section 4.12(8) of the Environmental Planning and Assessment Act 1979 Schedule 2 of the Environmental Planning and Assessment Regulation 2000</b>		
<b>Application Number</b>	SSD-23330227	
<b>Project Name</b>	Redevelopment of John Palmer Public School	
<b>Location</b>	85 The Ponds Boulevard, The Ponds	
<b>Requirement</b>	<b>3. Trees and Landscaping</b>	<b>Report Ref.</b>
	<ul style="list-style-type: none"> <li>• a detailed site-wide landscape strategy, that:               <ul style="list-style-type: none"> <li>- details the proposed site planting, including location, number and species of planting, heights of trees at maturity and proposed canopy coverage.</li> </ul> </li> </ul>	1.0
	<ul style="list-style-type: none"> <li>- provides evidence that opportunities to retain significant trees have been explored and/or informs the plan.</li> </ul>	2.4
	<ul style="list-style-type: none"> <li>- Considers equity and amenity of outdoor play spaces, and integration with built form, security, shade, topography and existing vegetation.</li> </ul>	1.0, 1.1, 2.0
	<ul style="list-style-type: none"> <li>- demonstrates how the proposed development would:               <ul style="list-style-type: none"> <li>- contribute to long term landscape setting in respect of the site and streetscape.</li> <li>- mitigate the urban heat island effect and ensure appropriate comfort levels on-site.</li> <li>- contribute to objectives to increase urban tree canopy cover.</li> </ul> </li> </ul>	1.0, 1.1, 2.0, 2.1, 2.3, 2.5
	<ul style="list-style-type: none"> <li>- a detailed landscape plan prepared by a suitably qualified person.</li> </ul>	Appendix 1.
	<ul style="list-style-type: none"> <li>• Relevant Policies and Guidelines:               <ul style="list-style-type: none"> <li>- Draft Greener Places Design Guide (GANSW)</li> <li>- Objective 30 of The Greater Sydney Region Plan - A Metropolis of Three Cities.</li> <li>- Technical Guidelines for Urban Green Cover in NSW (Office of Environment and Heritage (OEH), 2015).</li> </ul> </li> </ul>	2.3, 2.5

## 1.0 SITE WIDE LANDSCAPE DESIGN STRATEGY

The landscape design (drawings located in Appendix 1), aim to:

- Integrate the proposed new buildings and building works with the existing school site
- Arranging outdoor learning spaces connected to new homebases
- Provide a range of external spaces for 1:1, small group and whole of class learning
- Define and integrate passive outdoor learning spaces, active play spaces and circulation networks
- Develop the design to retain significant trees
- Improve the long term landscape setting of John Palmer Public School within its context and streetscape
- Mitigate heat island effect and ensure appropriate comfort levels on-site.
- Increase urban tree canopy cover

### 1.1 SEPP (Educational Establishments and Child Care Facilities)

The proposed landscape design addresses the State Environmental Planning Policy (SEPP), Educational Establishments and Child Care Facility Principles outlined in Schedule 4, School - Design quality principles. The following commentary directly responds to the relevant SEPP principles:

- **Principle 1 - context, built form and landscape**

The following have been used to develop the design:

- **Landscape context**

John Palmer Public School is within 200m of the Second Ponds Creek Reserve. This proximity to Second Ponds Creek has allowed the landscape design to focus on the sites stormwater management and native landscape planting.

- **Aboriginal cultural heritage**

Through the design process the design team have developed a series of strategies to provide interventions for Connecting with Country opportunities identified in workshops with PTW and Tocomwall (Aboriginal Heritage Consultant)

- **Spacial organisation**

Consideration has been given to providing a mix of external spaces to ensure access to both passive and active play. Passive play spaces are generally located at edges and building alignments with active play formally defined with landscape planting and circulation networks. Play spaces are typically broken down into various scales to allow interaction and participation by small, medium and large groups. Outdoor learning spaces are directly connected to the new homebases.

- **Orientation and climate**

The proposed design takes advantage of the north south orientation of the large active playing fields, with the architectural planning maximising access to outdoor play. The proposed tree planting has been selected to provide access to shade in summer and provide solar access in winter.

- **Streetscape**  
Large avenues of low groundcover and buffer tree planting are proposed along the Pebble Crescent boundary to provide western visitors from the school across the oval to terminate on green, partially screening the immediate context of residential houses. Trees retained along the Ponds Boulevard are augmented with additional low groundcover and tree planting to improve the school's street address and screen the proposed new school buildings from neighbouring residential areas.
- **Principle 2 - sustainable, efficient and durable**  
Native landscape planting has been selected to ensure resilient species suited to the site, and areas climate will minimise the landscape areas requirements for irrigation and ongoing maintenance.
- **Principle 3 - accessible and inclusive**  
The proposed design retains the north - south circulation spine to maintain accessible wayfinding. The addition of the proposed walking loop improves wayfinding and access from the existing school to the new school development and associated external spaces.
- **Principle 4 - health and safety**  
Generally the landscape planting is arranged as trees and low groundcover planting to maximise passive surveillance and improve Crime Prevention through Environmental Design (CPTED) Principles.
- **Principle 5 - amenity**  
Improved landscape amenity has been addressed by providing engaging, flexible outdoor learning and play spaces. Outdoor learning spaces connect directly with homebases within new landscape planting.
- **Engaging Spaces**  
Due to the school's proximity and ease of access to Second Ponds Creek reserve, community hub and parklands educational opportunities exist in telling the story of water. A tangible understanding of the water cycle could be portrayed with the proposed planted swale which helps to capture, slow and filter stormwater run-off before it is discharged to Second Ponds Creek which leads to the Parramatta River, Sydney Harbour and beyond to the ocean. The proposed planted swale addresses water absorption principles identified in the **Urban Green Cover NSW Technical Guidelines** "urban green cover and the soil or substrate in which it grows can capture storm water, reduce peak flows and improve water quality in urban streams and catchment health. Improved water absorption can also moderate localised flooding." Office of Environment & Heritage, viewed 21 September 2021, <https://climatechange.environment.nsw.gov.au/Adapting-to-climate-change/Green-Cover>
- **Education**  
Outdoor learning is provided in spaces directly connected to proposed homebases. The outdoor learning spaces are designed to facilitate 1:1, small group, and whole of class learning.

- **Principle 6 - whole of life, flexible and adaptive**

Generally external landscape areas are appropriate for multiple uses and are designed to allow flexible and adaptable outdoor learning and play.

- **Principle 7 - aesthetics**

The external landscape spaces are arranged as a series of outdoor rooms, defined by groundcover and tree planting. The landscape planting is designed to provide a positive impact on the quality of the external spaces for learning and play, whilst also contributing to increased biodiversity and improving the school's identity within the local area.

## **2.0 LANDSCAPE PLANTING STRATEGY**

The landscape planting strategy assists in integrating the proposed new buildings and built works with the existing John Palmer Public School site by:

- defining outdoor learning spaces and circulation networks
- ensuring external areas provide opportunities for shade and solar access
- providing seasonal interest with deciduous tree planting and flowering plants
- increasing habitat and biodiversity opportunities
- capturing, slowing and filtering stormwater run-off from site

Generally the landscape planting is arranged as trees and low groundcover planting to maximise passive surveillance and improve Crime Prevention through Environmental Design (CPTED) Principles. Shrub planting is located in selected edges and boundaries to provide opportunities for views to terminate on planting and to screen views in and out, such as the northern boundary to the Ponds Shopping Centre Loading Dock.

Opportunities for student engagement and education is provided with a proposed native landscape drainage swale along the Pebble Crescent Boundary. This area is located at the lower levels of the school site and is proposed to consist of buffer tree planting with dense native groundcover planting to capture, slow and filter stormwater run-off from site.

Due to the school's proximity and ease of access to Second Ponds Creek reserve, community hub and parklands educational opportunities exist in telling the story of water. A tangible understanding of the water cycle could be portrayed with the capture of site run-off within the planted swale along Pebble Crescent Boundary which discharges to Second Ponds Creek, before flowing to the Parramatta River, Sydney Harbour and beyond to the ocean.

## **2.1 Species Selections**

The majority of the proposed landscape planting has been selected from the Blacktown City Council "Vegetation Management Plan Guideline" Recommended Planting List. <https://www.blacktown.nsw.gov.au/files/assets/public/plan-and-build/blacktownvmpbooklet-2019-32-pages-web.pdf>

Proposed tree species have been selected from the Blacktown Development Control Plan, 2015, Part A - Introduction and General Guidelines, Appendix 1 Recommended tree species. <https://www.blacktown.nsw.gov.au/Plan-build/Stage-2-plans-and-guidelines/>

Large Areas of groundcover planting are proposed to be directed seeded with low groundcover, understory planting of grassy woodland and grassland species derived from the Greening Australia Native Seed Services. <https://www.greeningaustralia.org.au/services-native-seed/>

*Fraxinus pennsylvanica* Cimmaron (Cimmaron ash) has been selected as a deciduous feature tree to:

- provide seasonal interest
- provide opportunities for shade in summer and solar access in winter
- line the primary north south circulation spine, and
- define active play spaces on the existing oval

## 2.2 Trees to be removed

In the development of the school design the following trees have been identified for removal (Refer Appendix 1, Landscape Drawing DA-LA-0001). Tree numbering is referenced from the John Palmer Primary School Arboricultural Impact Assessment, prepared by Ecological Australia (30 September 2020).

Trees 18 and 19 are located within the exclusion zone of the existing substation, along The Ponds Boulevard. Upgrade works are required to the existing substation as part of the John Palmer Public School development. All other trees identified for removal are located within proposed building zones.

- 1 *Corymbia maculata* Spotted gum
- 2 *Eucalyptus fibrosa* Red ironbark
- 3 *Eucalyptus crebra* Narrow-leaved ironbark
- 4 *Angophora costata* Smooth-barked apple
- 5 *Corymbia maculata* Spotted gum
- 6. *Corymbia maculata* Spotted gum
- 7 *Eucalyptus crebra* Narrow-leaved ironbark
- 8 *Corymbia maculata* Spotted gum
- 9 *Corymbia maculata* Spotted gum
- 10. *Corymbia maculata* Spotted gum
- 11. *Corymbia maculata* Spotted gum
- 18. *Eucalyptus fibrosa* Red ironbark
- 19. *Corymbia maculata* Spotted gum
- 33. *Corymbia maculata* Spotted gum
- 34. *Corymbia maculata* Spotted gum
- 35. *Corymbia maculata* Spotted gum

- 36. *Triadica sebifera* Chinese tallow
- 37. *Triadica sebifera* Chinese tallow
- 49. *Eucalyptus sp.* Eucalypt
- 50. *Eucalyptus tereticornis* Forest red gum
- 64-64G  
Melaleuca sp. Melaleuca
- 113. *Fraxinus griffithii* Evergreen ash
- 114. *Fraxinus griffithii* Evergreen ash
- 115. *Fraxinus griffithii* Evergreen ash
- 116. *Fraxinus griffithii* Evergreen ash
- 117. *Fraxinus griffithii* Evergreen ash
- 118. *Triadica sebifera* Chinese tallow
- 128. *Eucalyptus crebra* Narrow-leaved ironbark
- 132. *Corymbia maculata* Spotted gum
- 133. *Eucalyptus crebra* Narrow-leaved ironbark

*Corymbia maculata* (Spotted gum) is listed in the Education Facility Standards and Guidelines (EFSG), clause DG92 Landscape Softworks, 92.08 Hazardous Trees / Plants as a tree that may shed large branches. The EFSG states: “If a specimen of a species prone to limb drop exists as a mature tree on site, carefully consider its location relative to the proposed future use of the surrounding area. Review the design and species and assess the suitability for retention, with a view to minimising the potential risk.”

*Triadica sebifera* (Chinese tallow) is listed by the NSW Department of Primary Industries as “Fast becoming an invasive environmental weed of water courses and native vegetation areas.” (NSW Department of Primary Industries, viewed 21 September 2021, <https://weeds.dpi.nsw.gov.au/Weeds/Details/38>)

### 2.3 Cumberland Plain Woodland

A number of the trees identified for removal are listed as tree species occurring less frequently in the Cumberland Plain Woodland community. NSW Department of Primary Industries, viewed 21 September 2021, <https://www.environment.nsw.gov.au/topics/animals-and-plants/threatened-species/nsw-threatened-species-scientific-committee/determinations/final-determinations/2008-2010/cumberland-plain-woodland-critically-endangered-ecological-community-listing>. The Cumberland Plain Woodland is identified as a critically endangered ecological community. The landscape design has incorporated suitable replacement tree planting of species from the Cumberland Plain Woodland community along the schools boundaries augmenting existing tree planting on site. (Refer Appendix 1, Landscape Drawing DA-LA-0001, and 0021)

## 2.4 Retaining existing trees

The proposed external and landscape works have considered the school's existing trees by locating and designing the interventions to avoid or minimise encroachment (<10%) into the tree protection zones (TPZ), including the extent of any proposed cut and fill. The circulation loop which connects the existing school with proposed new school buildings has been designed to have minimal impact on existing trees. The existing trees have been retained by developing the alignment of the circulation path and the materiality. Permeable paving has been used for sections of the circulation loop that are located within areas of the trees protection zones (TPZ). (Refer Appendix 1, Landscape Drawing DA-LA-0001, 0003, 0004, 0005 and 0020)

## 2.5 Tree Canopy Cover

An increased canopy cover has been identified as a target in the **Greater Sydney Regional Plan** Greater Sydney Commission, Objective 30 - Urban tree canopy cover is increased, viewed 21 September 2021, <https://www.greater.sydney/metropolis-of-three-cities>.

Considering John Palmer Public School's location, bordered by medium density residential zones, and commercial zone to the north an indicative target of >25% urban tree canopy cover is identified in the **DRAFT Greener Places Design Guide** for medium to high density areas by 2056 to align with the Greater Sydney Regional Plan. (Government Architect New South Wales, viewed 21 September 2021, <https://www.governmentarchitect.nsw.gov.au/guidance/greener-places-guide>).

The policy to increase tree canopy cover helps to improve amenity and comfort levels of students on site and mitigate heat island effect. Currently John Palmer Public School has a canopy cover of 8.7%. The proposed landscape tree planting increases the area of canopy cover to 26.8% (Refer Appendix 1, Landscape Drawing DA-LA-0010).

## Appendix 1

### **Landscape SSDA Drawings**

- DA-LA-001 Landscape Plan
- DA-LA-0002 Detail Landscape Plan, Sheet 1
- DA-LA-0003 Detail Landscape Plan, Sheet 2
- DA-LA-0004 Detail Landscape Plan, Sheet 3
- DA-LA-0005 Detail Landscape Plan, Sheet 4
- DA-LA-0010 Tree Canopy Cover
- DA-LA-0020 Landscape Materials and Finishes
- DA-LA-0021 Landscape Planting



PLANTING SCHEDULE						
SYM	Botanical Name	Common Name	Height x Width	Pot	Spacing	QTY
<b>Tree Planting</b>						
Fp	<i>Fraxinus pennsylvanica</i>	Common ash	10m x 8m	100L	As Shown	77
Gr	<i>Grevillea robusta</i>	Silky oak	12m x 6m	100L	As Shown	22
Lc	<i>Lophostemon confertus</i>	Brush box	12m x 6m	100L	As Shown	8
Mq	<i>Melaleuca quinquenervia</i>	Paperbark	8m x 4m	100L	As Shown	6
Sg	<i>Syncarpia glomulifera</i>	Turpentine tree	20m+ x 6m+	200L	As Shown	9
<b>Tree Planting (Cumberland Plain Woodland)</b>						
Cm	<i>Corymbia maculata</i>	Spotted gum	15m x 6m	25L	As Shown	30
Ec	<i>Eucalyptus crebra</i>	Ironbark	18m x 8m	25L	As Shown	19
Ef	<i>Eucalyptus fibrosa</i>	Red ironbark	18m x 8m	25L	As Shown	11
Et	<i>Eucalyptus tereticornis</i>	Forest red gum	18m x 10m	25L	As Shown	13
<b>Shrub Planting</b>						
As	<i>Acmena smithii</i>	Lilly pilly	3m x 2m	25L	As Shown	73
Cs	<i>Callistemon salignus</i>	Willow bottlebrush	7m x 4m	25L	As Shown	4
Md	<i>Melaleuca decora</i>	White honeymyrtle	7m x 4m	25L	As Shown	4
Pu	<i>Pittosporum undulatum</i>	Mock orange	8m x 5m	25L	As Shown	3
Ri	<i>Raphiolepis indica</i>	Indian hawthorn	1.5m x 1.5m	25L	As Shown	100
Wf	<i>Westringia fruticosa</i>	Coastal rosemary	1.5-2m+ x 1m	25L	As Shown	45
<b>Groundcovers</b>						
Ci	<i>Carex inversa</i>	Knob sedge	0.7m x 0.7m	150mm	As Shown	1000
Dr	<i>Dianella revoluta</i>	Blue berry lily	0.7m x 0.7m	150mm	As Shown	670
Lj	<i>Lomandra longifolia</i>	Mat rush	0.7m x 0.7m	150mm	As Shown	1000
Ju	<i>Juncus ustulatus</i>	Common rush	0.6m x 0.5m	150mm	As Shown	1000
<b>Groundcovers / understorey (Cumberland Plain Woodland)**</b>						
	<i>Carex inversa</i>	Knob sedge	0.7m x 0.7m	-	Direct seeded	TOTAL AREA 1920m <sup>2</sup>
	<i>Dianella longifolia</i>	Flax lily	0.7m x 0.7m	-	Direct seeded	
	<i>Lomandra filiformis</i>	Mat rush	0.7m x 0.7m	-	Direct seeded	
	<i>Poa labillardierei</i>	Tussock grass	0.7m+ x 0.7m	-	Direct seeded	
	<i>Juncus ustulatus</i>	Common rush	0.7m+ x 0.7m	-	Direct seeded	
	<i>Themeda australis</i>	Kangaroo grass	0.7m+ x 0.7m	-	Direct seeded	

\*\* Indicative species identified above, including suitable cover crop. Develop native seed mix, including planting (seeding) management and techniques with Greening Australia - Cumberland Seed Production Area (SPA): <https://greeningaustralia.org>

**TREE REMOVAL SCHEDULE**

Tree numbers are referenced from the John Palmer Primary School Arboricultural Impact Assessment by Ecological Australia, 30 September 2020

Tree No.	Botanical Name	Common Name	Species	Notes
1	<i>Corymbia maculata</i>	Spotted gum	113 <i>Fraxinus griffithii</i>	Evergreen ash
2	<i>Eucalyptus fibrosa</i>	Red ironbark	114 <i>Fraxinus griffithii</i>	Evergreen ash
3	<i>Eucalyptus crebra</i>	Narrow-leaved ironbark	115 <i>Fraxinus griffithii</i>	Evergreen ash
4	<i>Angophora costata</i>	Smooth-barked apple	116 <i>Fraxinus griffithii</i>	Evergreen ash
5	<i>Corymbia maculata</i>	Spotted gum	117 <i>Fraxinus griffithii</i>	Evergreen ash
6	<i>Corymbia maculata</i>	Spotted gum	118 <i>Triadica sebifera</i>	Chinese tallow
7	<i>Eucalyptus crebra</i>	Spotted gum	128 <i>Eucalyptus crebra</i>	Narrow-leaved ironbark
8	<i>Corymbia maculata</i>	Spotted gum	132 <i>Corymbia maculata</i>	Spotted gum
9	<i>Corymbia maculata</i>	Spotted gum	133 <i>Eucalyptus crebra</i>	Narrow-leaved ironbark
10	<i>Corymbia maculata</i>	Spotted gum		
11	<i>Corymbia maculata</i>	Spotted gum		
18	<i>Eucalyptus fibrosa</i>	Red ironbark		
19	<i>Corymbia maculata</i>	Spotted gum		
33	<i>Corymbia maculata</i>	Spotted gum		
34	<i>Corymbia maculata</i>	Spotted gum		
35	<i>Corymbia maculata</i>	Spotted gum		
36	<i>Triadica sebifera</i>	Chinese tallow	**	
37	<i>Triadica sebifera</i>	Chinese tallow	**	
49	<i>Eucalyptus sp.</i>	Eucalypt sp.		
50	<i>Eucalyptus tereticornis</i>	Forest red gum		
64A - 64G	<i>Melaleuca sp.</i>	Melaleuca		

\* *Corymbia maculata* (Spotted gum) and *Eucalyptus sp.* are listed in the EFSG, clause DG92 Landscape Softworks, 92.08 - Hazardous Trees / Plants as a tree that may shed large branches. The EFSG states: "If a specimen of a species prone to limb drop exists as a mature tree on site, carefully consider its location relative to the proposed future use of the surrounding area. Review the design and species and assess the suitability for retention, with a view to minimising the potential risk. Consult a qualified arborist to review existing trees and assess the risk, as well as provide management guidelines and measures to reduce stress and the potential for limb drop?"

\*\* *Triadica sebifera* (Chinese tallow) is listed on the NSW Department of Primary Industries web site as "fast becoming an invasive environmental weed of water courses and native vegetation areas".

<https://weeds.dpi.nsw.gov.au/Weeds/Details/38>

The Arborist report identifies the trees retention value as "low".

- KEY**
- 1 NATIVE LANDSCAPE PLANTING SWALE
    - BUFFER TREE PLANTING WITH DENSE NATIVE GROUND COVER PLANTING TO CAPTURE, SLOW AND FILTER STORMWATER RUN-OFF
  - 2 PROVIDE OUTDOOR LEARNING ZONES DIRECTLY CONNECTED TO HOMEBASES TO ALLOW:
    - FLEXIBLE LEARNING
    - 1 ON 1, SMALL GROUP, WHOLE OF CLASS LEARNING
  - 3 EXTERNAL ACTIVE PLAY ZONE. PROVIDE NEW GROUND SURFACE TREATMENT CONNECTED TO STEPPED SANDSTONE RETAINING ELEMENTS AND SLIDES WITH OPPORTUNITIES TO:
    - EXPLORE AND REFLECT LOCAL STORIES IN THE FORM OF COLOUR AND GRAPHICS
  - 4 NEW GROUND SURFACE TREATMENT TO COLA:
    - NEW GAMES COURT LINE MARKINGS
    - EXPLORE AND REFLECT LOCAL STORIES IN THE FORM OF COLOUR AND GRAPHICS
  - 5 NEW GROUND SURFACE TREATMENT TO DEFINE CONNECTION BETWEEN LIBRARY AND HALL:
    - EXPLORE AND REFLECT LOCAL STORIES IN THE FORM OF COLOUR AND GRAPHICS
  - 6 ACCESS WALKWAY LOOP ALONG THE PERIMETER OF NEW BUILDINGS LINKING NEW BUILDINGS WITH EXISTING SCHOOL AND OVAL
  - 7 "ART WALL"
    - EXPLORE AND REFLECT LOCAL STORIES IN THE FORM OF COLOUR AND GRAPHIC

**LEGEND**

[Symbol]	SITE BOUNDARY	[Symbol]	EXISTING LEVEL	[Symbol]	EXISTING TREE TO BE RETAINED
[Symbol]	EXISTING MAJOR CONTOUR (1m INTERVALS)	[Symbol]	PROPOSED NEW LEVEL	[Symbol]	EXISTING TREE TO BE REMOVED. REFER TREE REMOVAL SCHEDULE ABOVE. # REFER ARBORIST REPORT
[Symbol]	EXISTING MINOR CONTOUR	[Symbol]	NEW TURF (TF)	[Symbol]	NEW TREE PLANTING. Gs <i>Genius</i> species REFER PLANTING SCHEDULE
[Symbol]	EXISTING CONTOUR REMOVED	[Symbol]	NEW GROUND COVER MASS PLANTING (MP)	[Symbol]	P5 PAVING TYPE 5 RUBBER SOFTFALL PAVING. SUBSTRAIGHT THICKNESS TO SUIT PLAY / FALL CONDITIONS
[Symbol]	BS BENCH SEATING, CONCRETE	[Symbol]	MO MULCH ONLY	[Symbol]	TFR TURF, REINFORCED FOR VEHICLE ENTRY
[Symbol]	EX-SB EXISTING SANDSTONE BLOCK SEATING	[Symbol]	P1 PAVING TYPE 1 CONCRETE PAVING	[Symbol]	W1 WALL TYPE 1, CONCRETE WALL / EDGING
[Symbol]	HR HANDRAIL	[Symbol]	P2 PAVING TYPE 2 CONCRETE PAVING WITH APPLIED PAINTED GRAPHICS		
[Symbol]	HRB BALLUSTRADE WITH INTEGRATED HANDRAIL	[Symbol]	P3 PAVING TYPE 3 PERMEABLE 'ECO TRI-HEX' PAVING		
[Symbol]	ME METAL EDGE	[Symbol]	P4 PAVING TYPE 4 CONCRETE PLANK 'STEPPING STONES'		

**Key Plan:** [Diagram]

**Drawing Disclaimer:**  
Do not scale from drawings. Verify all dimensions on site before commencing work. Copying or reproduction of this drawing is strictly prohibited without the consent of PTW Architects

**Note:**  
PTW takes no responsibility for external building elements. Anything connected with any design, materials selection, construction or installation of any cladding, facade or external building element must be checked by and remains the responsibility of others, including suitably qualified experts as may be required.

Rev	Amendment	By	Chk**	Date
A	SSDA SUBMISSION	GM	GM	21/10/08

**\*Registered Architect**  
DHJ Diane H Jones NSW Arch 4778

**\*\*Registered Landscape Architect**  
GM Glenn McIntosh AILA

**Consultants**

**Client**

**Architect**  
PTW Architects  
Level 11, 88 Phillip Street  
Sydney NSW 2000 Australia  
T +61 2 9232 5877  
[ptw.com.au](http://ptw.com.au)

**Architect**  
PTW Architects  
Level 11, 88 Phillip Street  
Sydney NSW 2000 Australia  
T +61 2 9232 5877  
[ptw.com.au](http://ptw.com.au)

Peddie Thorp & Walker P/L  
ABN 23 000 454 624  
trading as PTW Architects

NSW Nominated Architects  
S Parsons Architect No. 5098  
D Jones Architect No. 4778

**PTW**

Scale: 0 1 2 5 8m  
1:500 @ A1

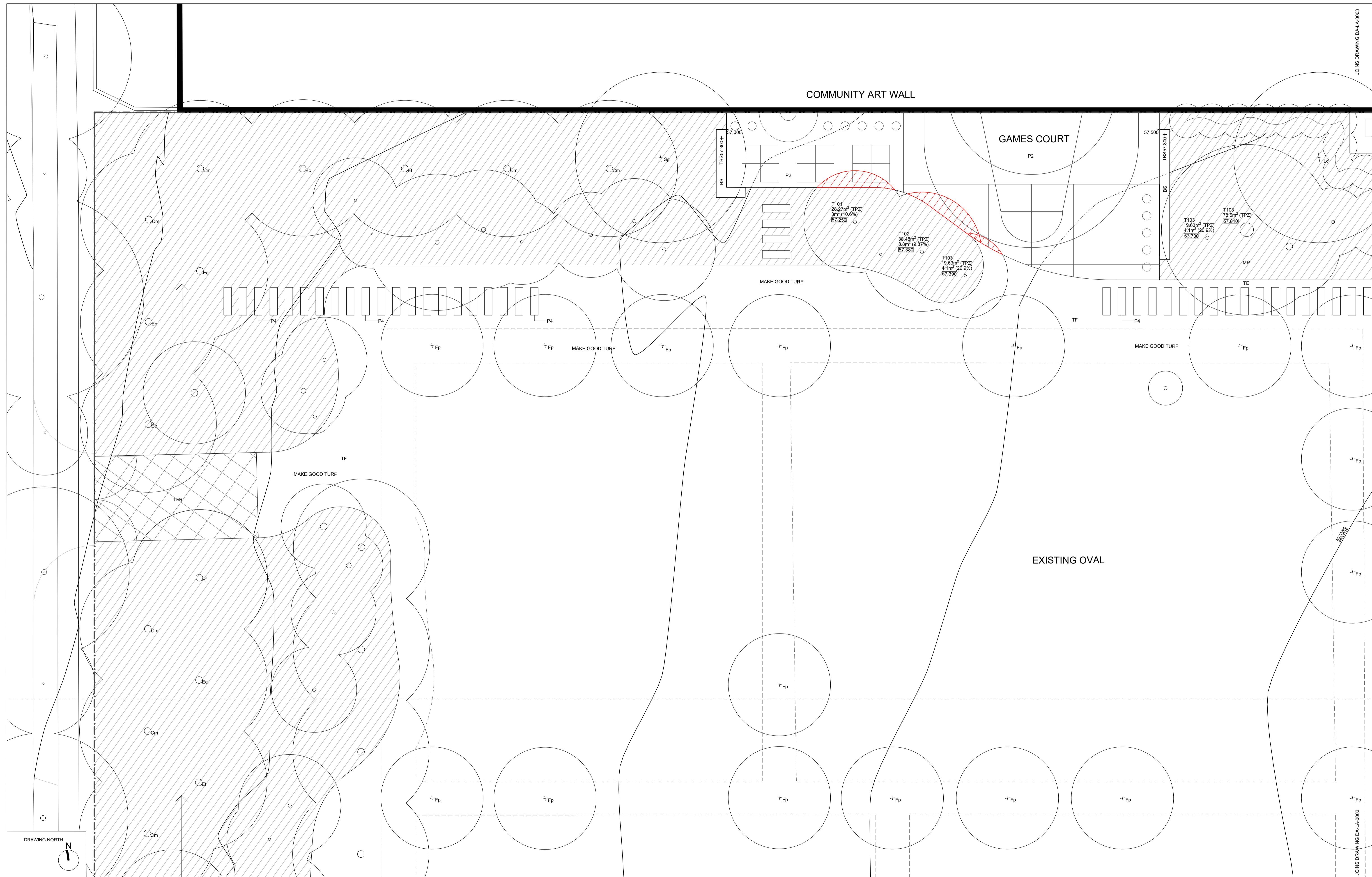
**Project**  
John Palmer Public School  
85 The Ponds Blvd, The Ponds NSW 2769

**Title**  
LANDSCAPE PLAN

**Drawing Number**  
DA-LA-0001

**Revision**  
A

**Status**  
SSDA SUBMISSION



**Key Plan:**

**Drawing Disclaimer:**  
Do not scale from drawings.  
Verify all dimensions on site before commencing work.  
Copying or reproduction of this drawing is strictly prohibited without the consent of PTW Architects

**Note:**  
PTW takes no responsibility for external building elements. Anything connected with any design, materials selection, construction or installation of any cladding, facade or external building element must be checked by and remains the responsibility of others, including suitably qualified experts as may be required.

Rev	Amendment	By	Chk**	Date
A	SSDA SUBMISSION	GM	GM	21/10/08

**\*Registered Architect**  
DHJ Diane H Jones NSW Arch 4778

**\*\*Registered Landscape Architect**  
GM Glenn McIntosh AILA

**Consultants**

**Client**

**Architect**  
PTW Architects  
Level 11, 88 Phillip Street  
Sydney NSW 2000 Australia  
T +61 2 9232 5877  
[ptw.com.au](http://ptw.com.au)

Peddie Thorp & Walker P/L  
ABN 23 000 454 624  
trading as PTW Architects

NSW Nominated Architects  
S Parsons Architect No. 6098  
D Jones Architect No. 4778

**PTW**

0 1 2 5 8m

1:100 @ A1

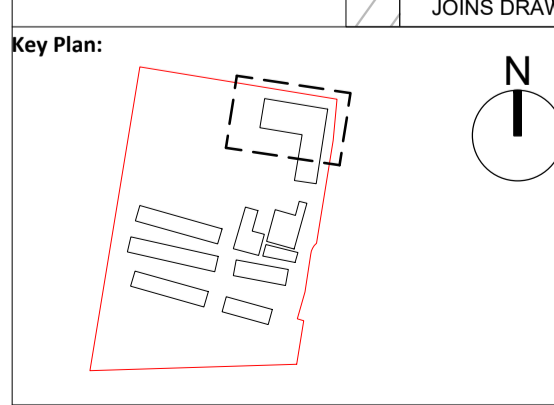
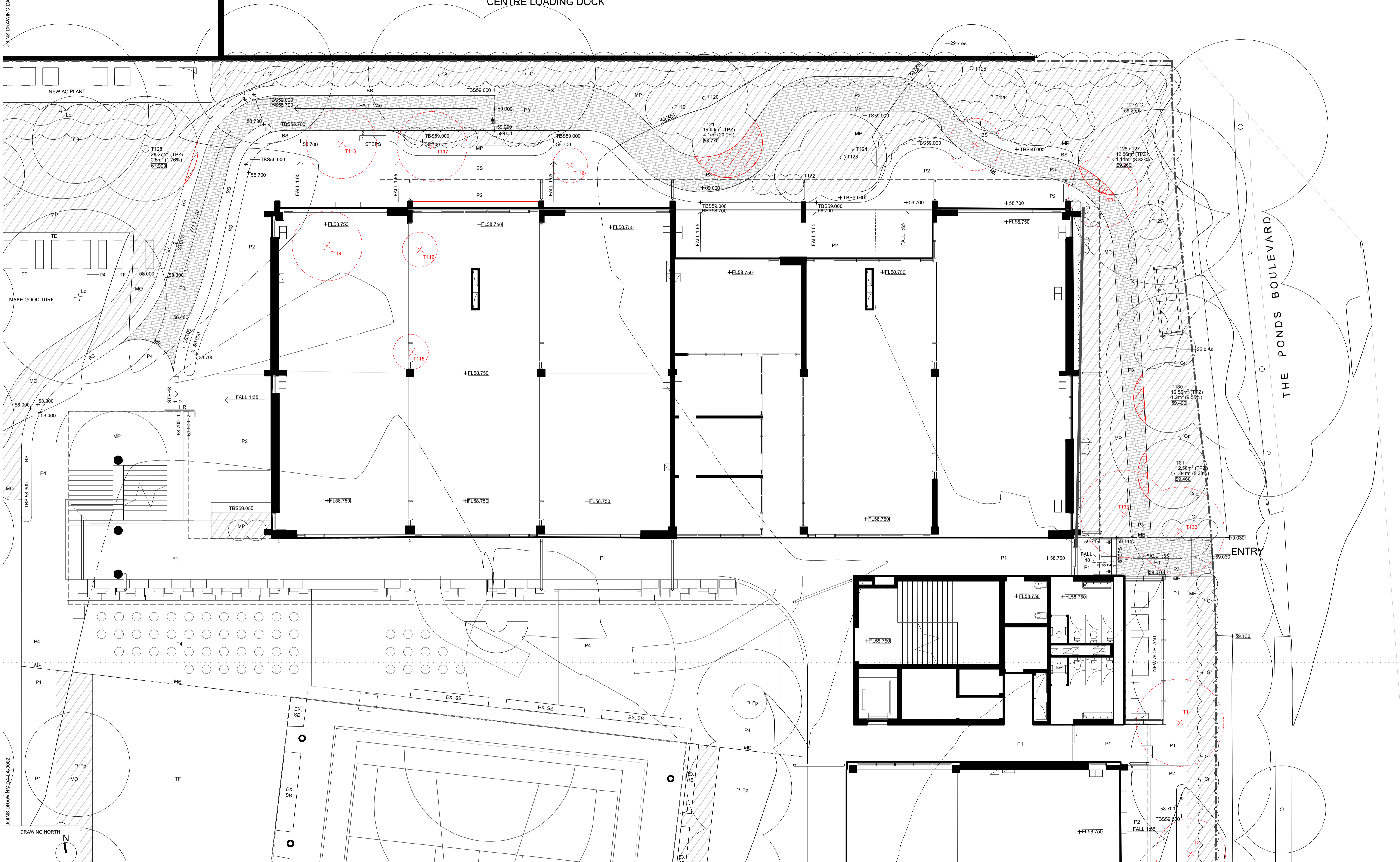
**Project**  
John Palmer Public School  
85 The Ponds Blvd, The Ponds NSW 2769

**Status**  
SSDA SUBMISSION

**Title**  
DETAIL LANDSCAPE PLAN  
SHEET 1

**Drawing Number**  
DA-LA-0002

**Revision**  
A



**Drawing Disclaimer:**  
Do not scale from drawings. Verify all dimensions on site before commencing work. Copying or reproduction of this drawing is strictly prohibited without the consent of PTW Architects

**Note**  
PTW takes no responsibility for external building elements. Anything connected with any design, materials selection, construction or installation of any cladding, facade or external building element must be checked by and remains the responsibility of others, including suitably qualified experts as may be required.

Rev	Amendment	By	Chk**	Date
A	SSDA SUBMISSION	GM	GM	21/10/08

**\*Registered Architect**  
DHJ Diane H Jones NSW Arch 4778

**\*\*Registered Landscape Architect**  
GM Glenn McIntosh AILA

**Consultants**

**Client**



**Education**

**Architect**  
PTW Architects  
Level 11, 88 Phillip Street  
Sydney NSW 2000 Australia  
T +61 2 9232 5877  
[ptw.com.au](http://ptw.com.au)



1:100 @ A1

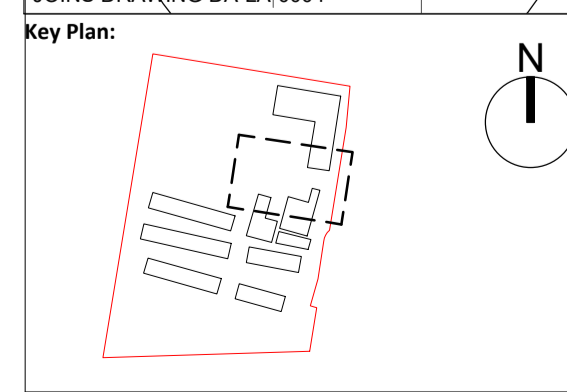
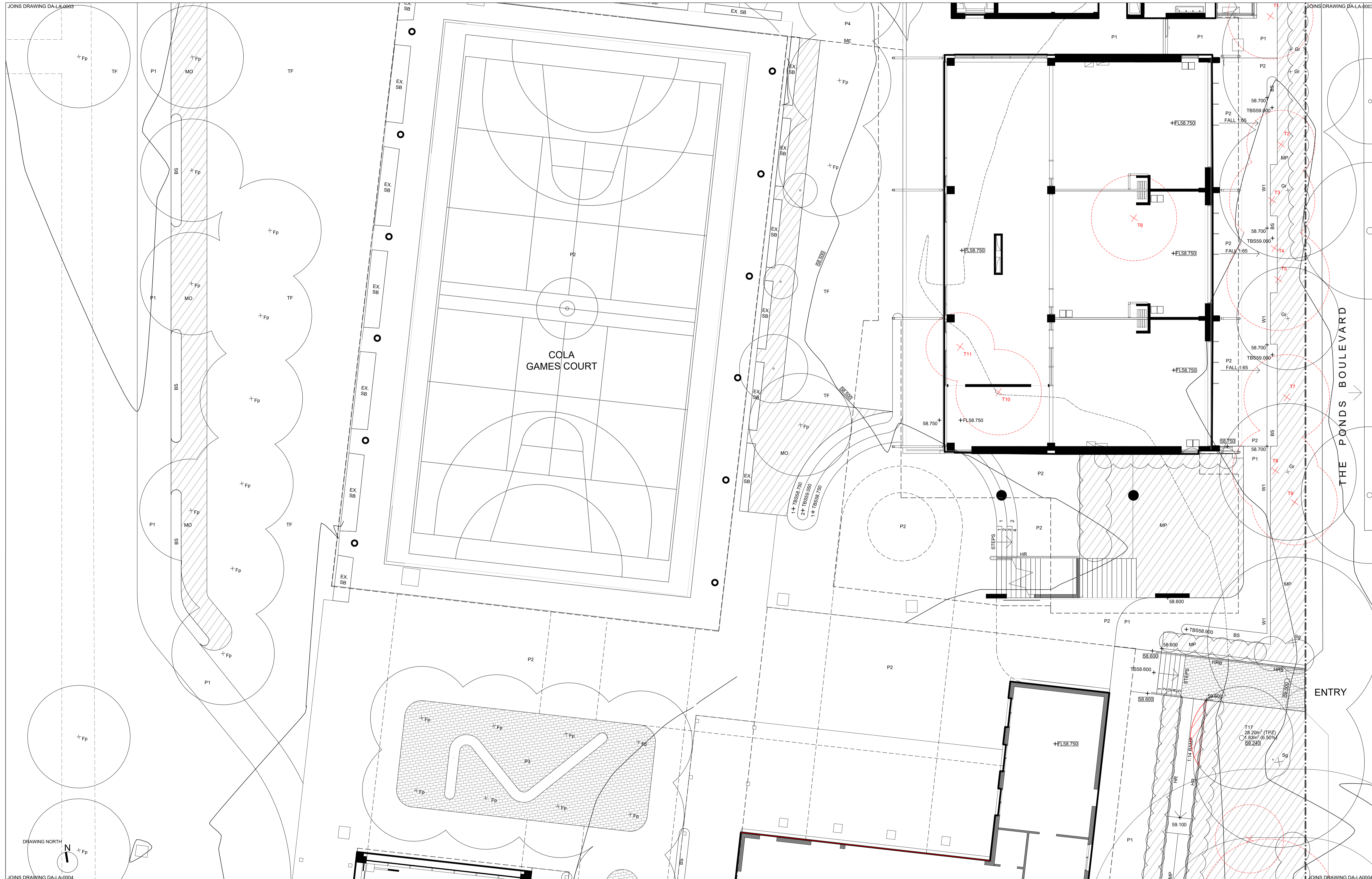
**Project**  
John Palmer Public School  
85 The Ponds Blvd, The Ponds NSW 2769

**Status**  
SSDA SUBMISSION

**Title**  
DETAIL LANDSCAPE PLAN  
SHEET 2

**Drawing Number**  
DA-LA-0003

**Revision**  
A



**Drawing Disclaimer:**  
Do not scale from drawings. Verify all dimensions on site before commencing work. Copying or reproduction of this drawing is strictly prohibited without the consent of PTW Architects

**Note:**  
PTW takes no responsibility for external building elements. Anything connected with any design, materials selection, construction or installation of any cladding, facade or external building element must be checked by and remains the responsibility of others, including suitably qualified experts as may be required.

Rev	Amendment	By	Chk**	Date
A	SSDA SUBMISSION	GM	GM	21/10/08

**\*Registered Architect**  
DHJ Diane H Jones NSW Arch 4778

**\*\*Registered Landscape Architect**  
GM Glenn McIntosh AILA

**Consultants**

**Client**

**Architect**  
PTW Architects  
Level 11, 88 Phillip Street  
Sydney NSW 2000 Australia  
T +61 2 9232 5877  
[ptw.com.au](http://ptw.com.au)

Peddie Thorp & Walker P/L  
ABN 23 000 454 624  
trading as PTW Architects

NSW Nominated Architects  
S Parsons Architect No. 6098  
D Jones Architect No. 4778

**PTW**

1:100 @ A1

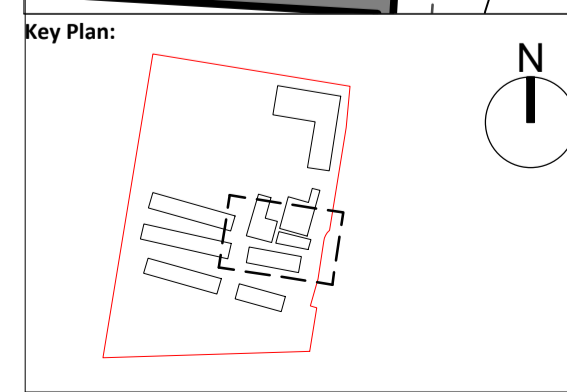
**Project**  
John Palmer Public School  
85 The Ponds Blvd, The Ponds NSW 2769

**Status**  
SSDA SUBMISSION

**Title**  
DETAIL LANDSCAPE PLAN  
SHEET 3

**Drawing Number**  
DA-LA-0004

**Revision**  
A



**Drawing Disclaimer:**  
Do not scale from drawings. Verify all dimensions on site before commencing work. Copying or reproduction of this drawing is strictly prohibited without the consent of PTW Architects

**Note**  
PTW takes no responsibility for external building elements. Anything connected with any design, materials selection, construction or installation of any cladding, facade or external building element must be checked by and remains the responsibility of others, including suitably qualified experts as may be required.

Rev	Amendment	By	Chk**	Date
A	SSDA SUBMISSION	GM	GM	21/10/08

**\*Registered Architect**  
DHJ Diane H Jones NSW Arch 4778

**\*\*Registered Landscape Architect**  
GM Glenn McIntosh AILA

**Consultants**

**Client**

**Architect**  
PTW Architects  
Level 11, 88 Phillip Street  
Sydney NSW 2000 Australia  
T +61 2 9232 5877  
[ptw.com.au](http://ptw.com.au)

Peddie Thorp & Walker P/L  
ABN 23 000 454 624  
trading as PTW Architects

NSW Nominated Architects  
S Parsons Architect No. 6098  
D Jones Architect No. 4778

**PTW**

1:100 @ A1

**Project**  
John Palmer Public School  
85 The Ponds Blvd, The Ponds NSW 2769

**Status**  
SSDA SUBMISSION

**Title**  
DETAIL LANDSCAPE PLAN  
SHEET 4

**Drawing Number**  
DA-LA-0005

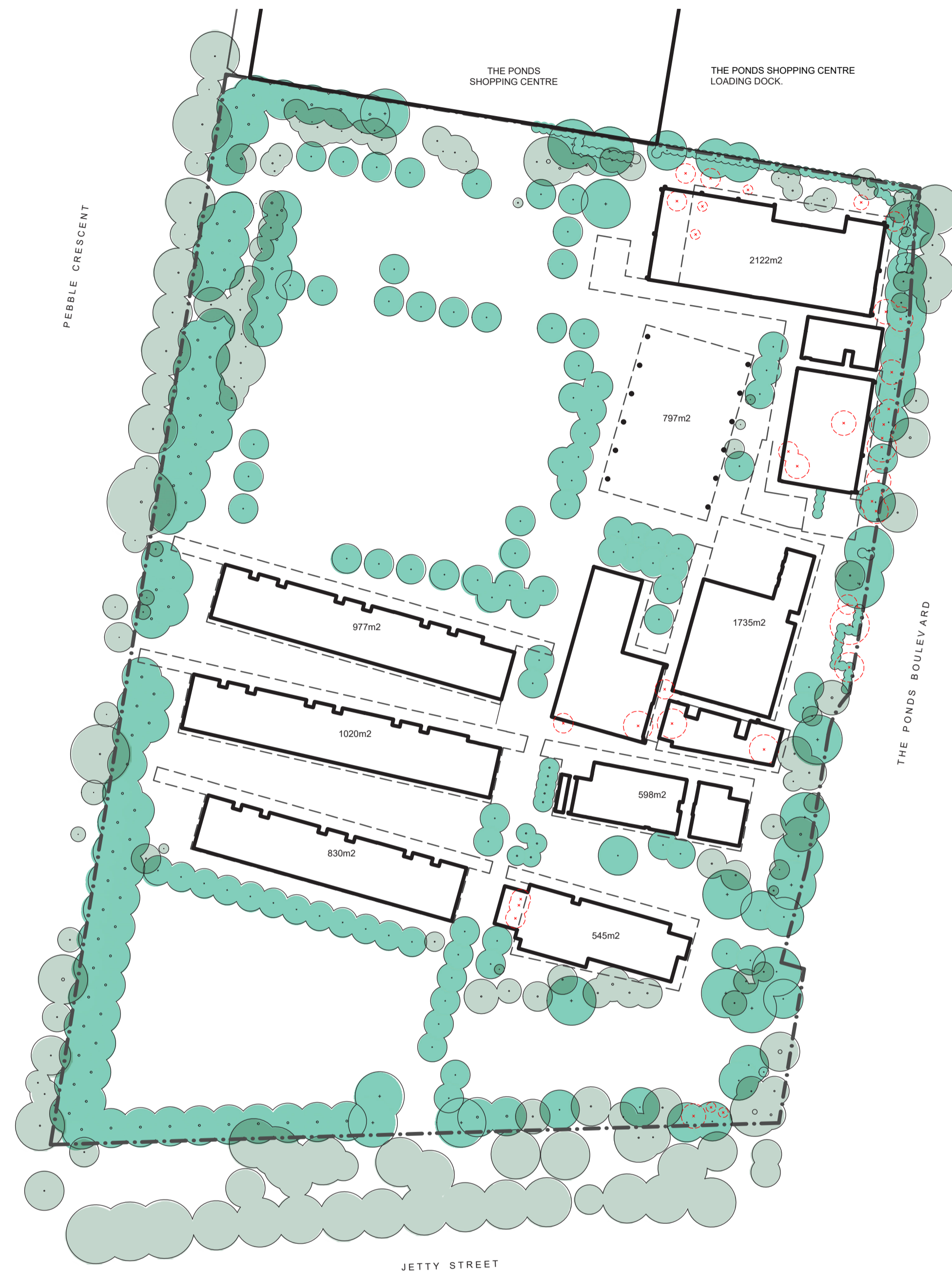
**Revision**  
A

THE PONDS BOULEVARD



**CANOPY AREA CALCULATIONS**  
 SITE AREA: 29,829m<sup>2</sup> EX. TREE CANOPY COVER: 2,582m<sup>2</sup> (8.7%)  
 BUILDING AREA: 8,624m<sup>2</sup>

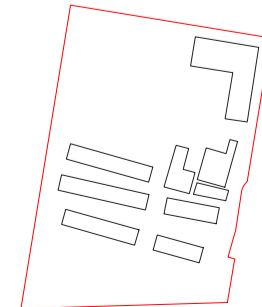
- LEGEND**
- SITE BOUNDARY
  - EXISTING TREE TO BE RETAINED
  - EXISTING TREE TO BE REMOVED, REFER LANDSCAPE DRAWINGS



**CANOPY AREA CALCULATIONS**  
 SITE AREA: 29,829m<sup>2</sup> NEW TREE CANOPY COVER: 7,986m<sup>2</sup> (26.8%)  
 BUILDING AREA: 8,624m<sup>2</sup>

- LEGEND**
- SITE BOUNDARY
  - EXISTING TREE TO BE RETAINED
  - EXISTING TREE TO BE REMOVED, REFER LANDSCAPE DRAWINGS
  - NEW TREE PLANTING

Key Plan:



**Drawing Disclaimer:**  
 Do not scale from drawings.  
 Verify all dimensions on site before commencing work.  
 Copying or reproduction of this drawing is strictly prohibited without the consent of PTW Architects

**Note**  
 PTW takes no responsibility for external building elements. Anything connected with any design, materials selection, construction or installation of any cladding, facade or external building element must be checked by and remains the responsibility of others, including suitably qualified experts as may be required.

Rev	Amendment	By	Chk**	Date
A	SSDA SUBMISSION	GM	GM	21/10/08

**\*Registered Architect**  
 DHJ Diane H Jones NSW Arch 4778

**\*\*Registered Landscape Architect**  
 GM Glenn McIntosh AILA

Consultants

Client



Education

Architect  
 PTW Architects  
 Level 11, 88 Phillip Street  
 Sydney NSW 2000 Australia  
 T +61 2 9232 5877  
 ptw.com.au

Peddie Thorp & Walker P/L  
 ABN 23 000 454 624  
 trading as PTW Architects

NSW Nominated Architects  
 S Parsons Architect No. 6098  
 D Jones Architect No. 4778



0 1 2 5 8m  
 1:750 @ A1

Project  
**John Palmer Public School**  
 85 The Ponds Blvd, The Ponds NSW 2769

Status  
 SSDA SUBMISSION

Title  
**TREE CANOPY COVER**

Drawing Number Revision

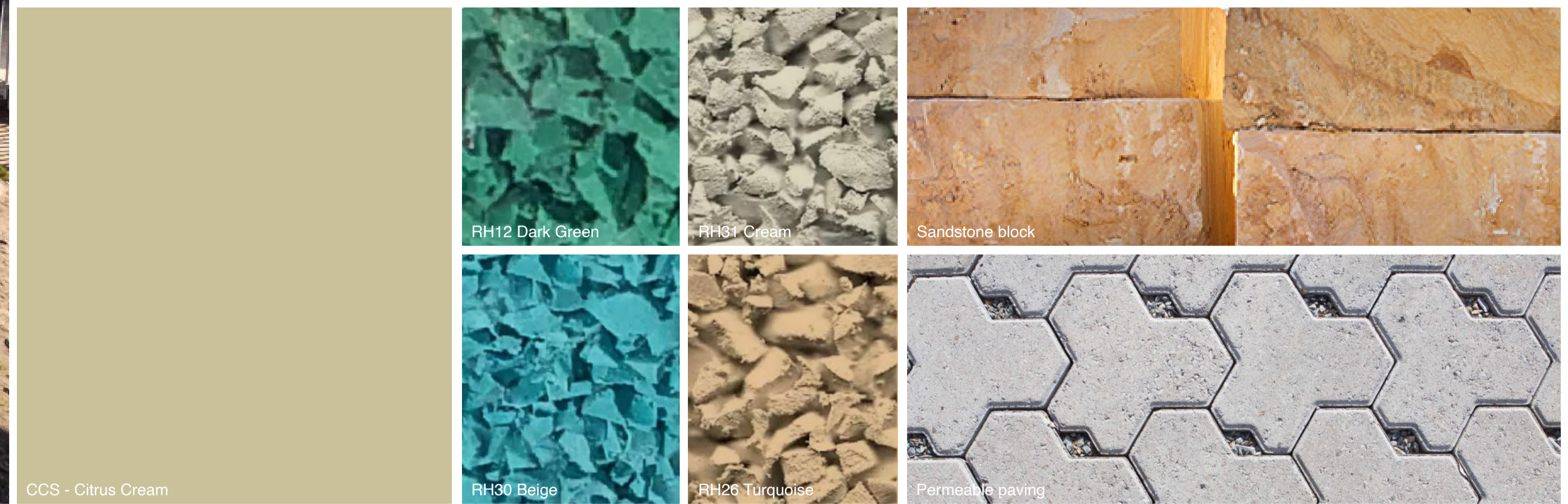
DA-LA-0010 A



**EXTERNAL ACTIVE PLAY SPACE**

A 'dynamic graphic' to new active playing spaces, games courts and applied to sections of existing Ponds Shopping Centre wall that forms the northern boundary to School. Graphic formed by coloured concrete and painted concrete surface treatment to reflect local stories of the area.

**CONCRETE PAINTING AND LINE MARKING**  
Product: Dulux, Roadmaster A1



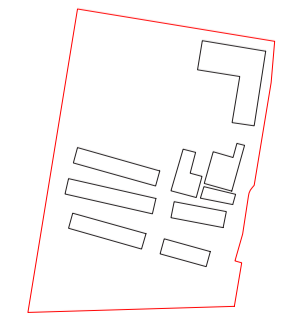
**COLOURED CONCRETE PAVING**  
Product: CCS Full Depth Concrete Colour  
Colour: Citrus Cream

**RUBBER SOFTFALL PAVING**  
Product: Surface Designs, Rosehill TPV

**SANDSTONE BLOCK RETAINING WALL AND ACTIVE PLAY INTERFACE**  
Product: Sandstone Block

**PERMEABLE PAVING**  
Product: Eco Tri-hex Paving

Key Plan:



**Drawing Disclaimer:**  
Do not scale from drawings. Verify all dimensions on site before commencing work. Copying or reproduction of this drawing is strictly prohibited without the consent of PTW Architects

**Note**  
PTW takes no responsibility for external building elements. Anything connected with any design, materials selection, construction or installation of any cladding, facade or external building element must be checked by and remains the responsibility of others, including suitably qualified experts as may be required.

Rev	Amendment	By	Chk**	Date
A	SSDA SUBMISSION	GM	GM	21/10/08

*Registered Architect			
DHJ	Diane H Jones	NSW Arch	4778
**Registered Landscape Architect			
GM	Glenn McIntosh	AILA	

Consultants	

**Client**

NSW GOVERNMENT Education

**Architect**  
PTW Architects  
Level 11, 88 Phillip Street  
Sydney NSW 2000 Australia  
T +61 2 9232 5877  
[ptw.com.au](http://ptw.com.au)

**Architects**  
Peddle Thorp & Walker P/L  
ABN 23 000 454 624  
trading as PTW Architects

**NSW Nominated Architects**  
S Parsons Architect No. 6098  
D Jones Architect No. 4778

**PTW**

0 1 2 5 8m  
NA @ A1

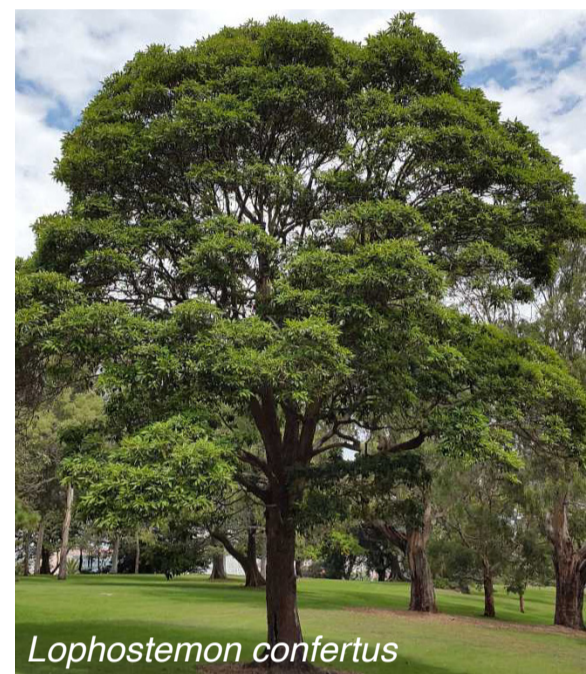
**Project**  
John Palmer Public School  
85 The Ponds Blvd, The Ponds NSW 2769

**Status**  
SSDA SUBMISSION

**Title**  
LANDSCAPE MATERIALS AND FINISHES

**Drawing Number**  
DA-LA-0020

**Revision**  
A



*Lophostemon confertus*



*Grevillea robusta*



*Callistemon salignus*



*Lomandra hystrix*



*Crinum pedunculatum*



*Syncarpia glomulifera*



*Fraxinus pennsylvanica 'Cinnazam'*



*Melaleuca quinquenervia*



*Acmena smithii*



*Juncus usitatus*

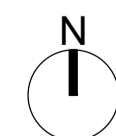
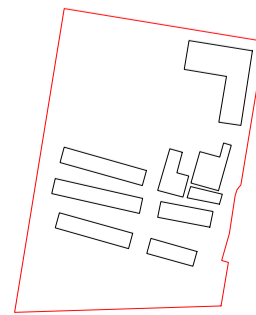


*Dianella revoluta*



*Themeda australis*

Key Plan:



**Drawing Disclaimer:**  
Do not scale from drawings. Verify all dimensions on site before commencing work. Copying or reproduction of this drawing is strictly prohibited without the consent of PTW Architects

**Note:**  
PTW takes no responsibility for external building elements. Anything connected with any design, materials selection, construction or installation of any cladding, facade or external building element must be checked by and remains the responsibility of others, including suitably qualified experts as may be required.

Rev	Amendment	By	Chk**	Date
A	SSDA SUBMISSION	GM	GM	21/10/08

*Registered Architect	
DHJ	Diane H Jones NSW Arch 4778
**Registered Landscape Architect	
GM	Glenn McIntosh AILA

Consultants	
Client	



**Architect**  
PTW Architects  
Level 11, 88 Phillip Street  
Sydney NSW 2000 Australia  
T +61 2 9232 5877  
[ptw.com.au](http://ptw.com.au)

Peddie Thorp & Walker P/L  
ABN 23 000 454 624  
trading as PTW Architects

NSW Nominated Architects  
S Parsons Architect No. 6098  
D Jones Architect No. 4778



0 1 2 5 8m  
NA @ A1

**Project**  
John Palmer Public School  
85 The Ponds Blvd, The Ponds NSW 2769

**Status**  
SSDA SUBMISSION

**Title**  
LANDSCAPE PLANTING

**Drawing Number**  
DA-LA-0021

**Revision**  
A