



PLANTING SCHEDULE						
SYM	Botanical Name	Common Name	Height x Width	Pot	Spacing	QTY
Tree Planting						
Fp	<i>Fraxinus pennsylvanica</i>	Common ash	10m x 8m	100L	As Shown	77
Gr	<i>Grevillea robusta</i>	Silky oak	12m x 6m	100L	As Shown	22
Lc	<i>Lophostemon confertus</i>	Brush box	12m x 6m	100L	As Shown	8
Mq	<i>Melaleuca quinquenervia</i>	Paperbark	8m x 4m	100L	As Shown	6
Sg	<i>Syncarpia glomulifera</i>	Turpentine tree	20m+ x 6m+	200L	As Shown	9
Tree Planting (Cumberland Plain Woodland)						
Cm	<i>Corymbia maculata</i>	Spotted gum	15m x 6m	25L	As Shown	30
Ec	<i>Eucalyptus crebra</i>	Ironbark	18m x 8m	25L	As Shown	19
Ef	<i>Eucalyptus fibrosa</i>	Red ironbark	18m x 8m	25L	As Shown	11
Et	<i>Eucalyptus tereticornis</i>	Forest red gum	18m x 10m	25L	As Shown	13
Shrub Planting						
As	<i>Acmena smithii</i>	Lilly pilly	3m x 2m	25L	As Shown	73
Cs	<i>Callistemon salignus</i>	Willow bottlebrush	7m x 4m	25L	As Shown	4
Md	<i>Melaleuca decora</i>	White honeymyrtle	7m x 4m	25L	As Shown	4
Pu	<i>Pittosporum undulatum</i>	Mock orange	8m x 5m	25L	As Shown	3
Ri	<i>Raphiolepis indica</i>	Indian hawthorn	1.5m x 1.5m	25L	As Shown	100
Wf	<i>Westringia fruticosa</i>	Coastal rosemary	1.5-2m+ x 1m	25L	As Shown	45
Groundcovers						
Ci	<i>Carex inversa</i>	Knob sedge	0.7m x 0.7m	150mm	As Shown	1000
Dr	<i>Dianella revoluta</i>	Blue berry lily	0.7m x 0.7m	150mm	As Shown	670
Lj	<i>Lomandra longifolia</i>	Mat rush	0.7m x 0.7m	150mm	As Shown	1000
Ju	<i>Juncus ustulatus</i>	Common rush	0.6m x 0.5m	150mm	As Shown	1000
Groundcovers / understorey (Cumberland Plain Woodland)**						
	<i>Carex inversa</i>	Knob sedge	0.7m x 0.7m	-	Direct seeded	TOTAL AREA 1920m ²
	<i>Dianella longifolia</i>	Flax lily	0.7m x 0.7m	-	Direct seeded	
	<i>Lomandra filiformis</i>	Mat rush	0.7m x 0.7m	-	Direct seeded	
	<i>Poa labillardierei</i>	Tussock grass	0.7m+ x 0.7m	-	Direct seeded	
	<i>Juncus ustulatus</i>	Common rush	0.7m+ x 0.7m	-	Direct seeded	
	<i>Themeda australis</i>	Kangaroo grass	0.7m+ x 0.7m	-	Direct seeded	

TREE REMOVAL SCHEDULE						
Tree numbers are referenced from the John Palmer Primary School Arboricultural Impact Assessment by Ecological Australia, 30 September 2020						
1	<i>Corymbia maculata</i>	Spotted gum *	113 <i>Fraxinus griffithii</i>	Evergreen ash	* <i>Corymbia maculata</i> (Spotted gum) and <i>Eucalyptus</i> spp. are listed in the EFSG, clause DG92 Landscape Softworks, 92.08 - Hazardous Trees / Plants as a tree that may shed large branches. The EFSG states: "If a specimen of a species prone to limb drop exists as a mature tree on site, carefully consider its location relative to the proposed future use of the surrounding area. Review the design and species and assess the suitability for retention, with a view to minimising the potential risk. Consult a qualified arborist to review existing trees and assess the tree, as well as provide management guidelines and measures to reduce stress and the potential for limb drop?"	
2	<i>Eucalyptus fibrosa</i>	Red ironbark *	114 <i>Fraxinus griffithii</i>	Evergreen ash		
3	<i>Eucalyptus crebra</i>	Narrow-leaved ironbark *	115 <i>Fraxinus griffithii</i>	Evergreen ash		
4	<i>Angophora costata</i>	Smooth-barked apple	116 <i>Fraxinus griffithii</i>	Evergreen ash		
5	<i>Corymbia maculata</i>	Spotted gum *	117 <i>Fraxinus griffithii</i>	Evergreen ash		
6	<i>Corymbia maculata</i>	Spotted gum *	118 <i>Triadica sebifera</i>	Chinese tallow		
7	<i>Eucalyptus crebra</i>	Spotted gum *	128 <i>Eucalyptus crebra</i>	Narrow-leaved ironbark *		
8	<i>Corymbia maculata</i>	Spotted gum *	132 <i>Corymbia maculata</i>	Spotted gum *		
9	<i>Corymbia maculata</i>	Spotted gum *	133 <i>Eucalyptus crebra</i>	Narrow-leaved ironbark *		
10	<i>Corymbia maculata</i>	Spotted gum *				
11	<i>Corymbia maculata</i>	Spotted gum *				
12	<i>Eucalyptus fibrosa</i>	Red ironbark				
13	<i>Corymbia maculata</i>	Spotted gum *				
14	<i>Corymbia maculata</i>	Spotted gum *				
15	<i>Corymbia maculata</i>	Spotted gum *				
16	<i>Triadica sebifera</i>	Chinese tallow **				
17	<i>Triadica sebifera</i>	Chinese tallow **				
18	<i>Eucalyptus</i> sp.	Eucalypt sp.				
19	<i>Eucalyptus tereticornis</i>	Forest red gum				
20	<i>Melaleuca</i> sp.	Melaleuca				
** <i>Triadica sebifera</i> (Chinese tallow) is listed on the NSW Department of Primary Industries web site as "fast becoming an invasive environmental weed of water courses and native vegetation areas". https://weeds.dpi.nsw.gov.au/Weeds/Details/38 The Arborist report identifies the trees retention value as "low".						

KEY

- NATIVE LANDSCAPE PLANTING SWALE
 - BUFFER TREE PLANTING WITH DENSE NATIVE GROUND COVER PLANTING TO CAPTURE, SLOW AND FILTER STORMWATER RUN-OFF
- PROVIDE OUTDOOR LEARNING ZONES DIRECTLY CONNECTED TO HOMEBASES TO ALLOW:
 - FLEXIBLE LEARNING
 - 1 ON 1, SMALL GROUP, WHOLE OF CLASS LEARNING
- EXTERNAL ACTIVE PLAY ZONE. PROVIDE NEW GROUND SURFACE TREATMENT CONNECTED TO STEPPED SANDSTONE RETAINING ELEMENTS AND SLIDES WITH OPPORTUNITIES TO:
 - EXPLORE AND REFLECT LOCAL STORIES IN THE FORM OF COLOUR AND GRAPHICS
- NEW GROUND SURFACE TREATMENT TO COLA:
 - NEW GAMES COURT LINE MARKINGS
 - EXPLORE AND REFLECT LOCAL STORIES IN THE FORM OF COLOUR AND GRAPHICS
- NEW GROUND SURFACE TREATMENT TO DEFINE CONNECTION BETWEEN LIBRARY AND HALL:
 - EXPLORE AND REFLECT LOCAL STORIES IN THE FORM OF COLOUR AND GRAPHICS
- ACCESS WALKWAY LOOP ALONG THE PERIMETER OF NEW BUILDINGS LINKING NEW BUILDINGS WITH EXISTING SCHOOL AND OVAL
- "ART WALL"
 - EXPLORE AND REFLECT LOCAL STORIES IN THE FORM OF COLOUR AND GRAPHIC

LEGEND	
[---] SITE BOUNDARY	+07.000 EXISTING LEVEL
[---] EXISTING MAJOR CONTOUR (1m INTERVALS)	+07.000 PROPOSED NEW LEVEL
[---] EXISTING MINOR CONTOUR	[TF] NEW TURF (TF)
[---] EXISTING CONTOUR REMOVED	[MP] NEW GROUND COVER MASS PLANTING (MP)
[BS] BENCH SEATING, CONCRETE	[MO] MULCH ONLY
[EX-SB] EXISTING SANDSTONE BLOCK SEATING	[P1] PAVING TYPE 1 CONCRETE PAVING
[HR] HANDRAIL	[P2] PAVING TYPE 2 CONCRETE PAVING WITH APPLIED PAINTED GRAPHICS
[HRB] BALLUSTRADE WITH INTEGRATED HANDRAIL	[P3] PAVING TYPE 3 PERMEABLE 'ECO TRI-HEX' PAVING
[ME] METAL EDGE	[P4] PAVING TYPE 4 CONCRETE PLANK 'STEPPING STONES'
[O] EXISTING TREE TO BE RETAINED	[P5] PAVING TYPE 5 RUBBER SOFTFALL PAVING. SUBSTRAIGHT THICKNESS TO SUIT PLAY / FALL CONDITIONS
[O ¹²⁶] EXISTING TREE TO BE REMOVED. REFER TREE REMOVAL SCHEDULE ABOVE. # REFER ARBORIST REPORT	[TFR] TURF, REINFORCED FOR VEHICLE ENTRY
[O ^{Gs}] NEW TREE PLANTING. Gs <i>Genius</i> species REFER PLANTING SCHEDULE	[W1] WALL TYPE 1, CONCRETE WALL / EDGING

Key Plan: [Diagram showing site location]

Drawing Disclaimer:
Do not scale from drawings. Verify all dimensions on site before commencing work. Copying or reproduction of this drawing is strictly prohibited without the consent of PTW Architects

Note:
PTW takes no responsibility for external building elements. Anything connected with any design, materials selection, construction or installation of any cladding, facade or external building element must be checked by and remains the responsibility of others, including suitably qualified experts as may be required.

Rev	Amendment	By	Chk**	Date
A	SSDA SUBMISSION	GM	GM	21/10/08

***Registered Architect**
DHJ Diane H Jones NSW Arch 4778

****Registered Landscape Architect**
GM Glenn McIntosh AILA

Consultants

Client

Architect
PTW Architects
Level 11, 88 Phillip Street
Sydney NSW 2000 Australia
T +61 2 9232 5877
ptw.com.au

Architect
PTW Architects
Level 11, 88 Phillip Street
Sydney NSW 2000 Australia
T +61 2 9232 5877
ptw.com.au

Peddie Thorp & Walker P/L
ABN 23 000 454 624
trading as PTW Architects

NSW Nominated Architects
S Parsons Architect No. 5098
D Jones Architect No. 4778

PTW

Scale: 0 1 2 5 8m
1:500 @ A1

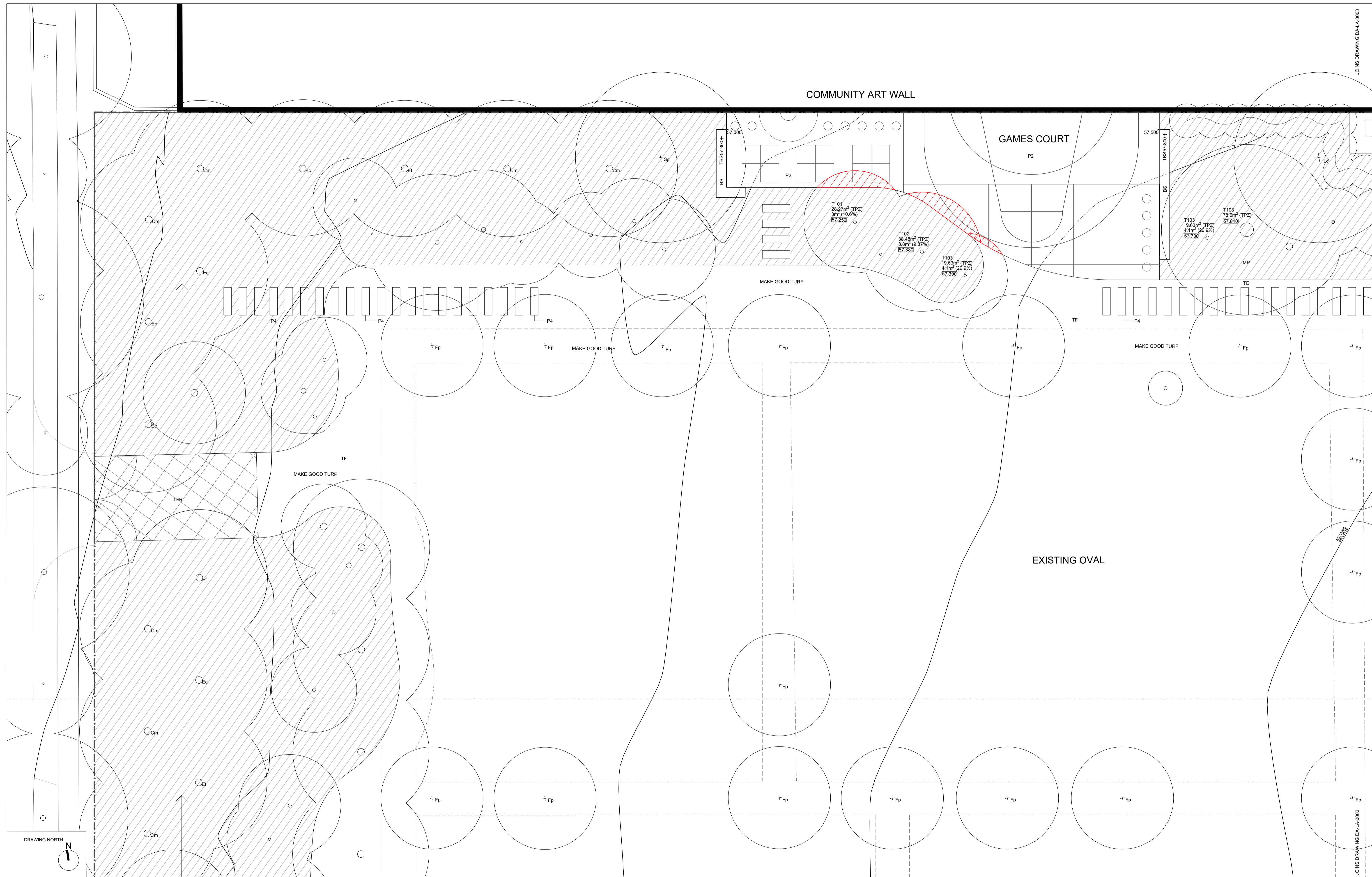
Project
John Palmer Public School
85 The Ponds Blvd, The Ponds NSW 2769

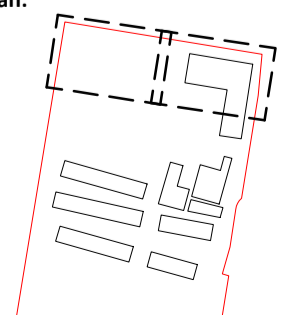
Title
LANDSCAPE PLAN

Drawing Number
DA-LA-0001

Revision
A

Status
SSDA SUBMISSION



Key Plan: 

Drawing Disclaimer:
Do not scale from drawings.
Verify all dimensions on site before commencing work.
Copying or reproduction of this drawing is strictly prohibited without the consent of PTW Architects

Note:
PTW takes no responsibility for external building elements. Anything connected with any design, materials selection, construction or installation of any cladding, facade or external building element must be checked by and remains the responsibility of others, including suitably qualified experts as may be required.

Rev	Amendment	By	Chk**	Date
A	SSDA SUBMISSION	GM	GM	21/10/08

***Registered Architect**
DHJ Diane H Jones NSW Arch 4778

****Registered Landscape Architect**
GM Glenn McIntosh AILA

Consultants

Client

Architect
PTW Architects
Level 11, 88 Phillip Street
Sydney NSW 2000 Australia
T +61 2 9232 5877
ptw.com.au

Peddie Thorp & Walker P/L
ABN 23 000 454 624
trading as PTW Architects

NSW Nominated Architects
S Parsons Architect No. 6098
D Jones Architect No. 4778

PTW

0 1 2 5 8m

1:100 @ A1

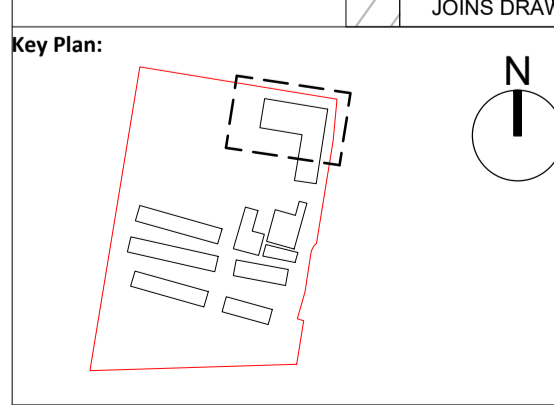
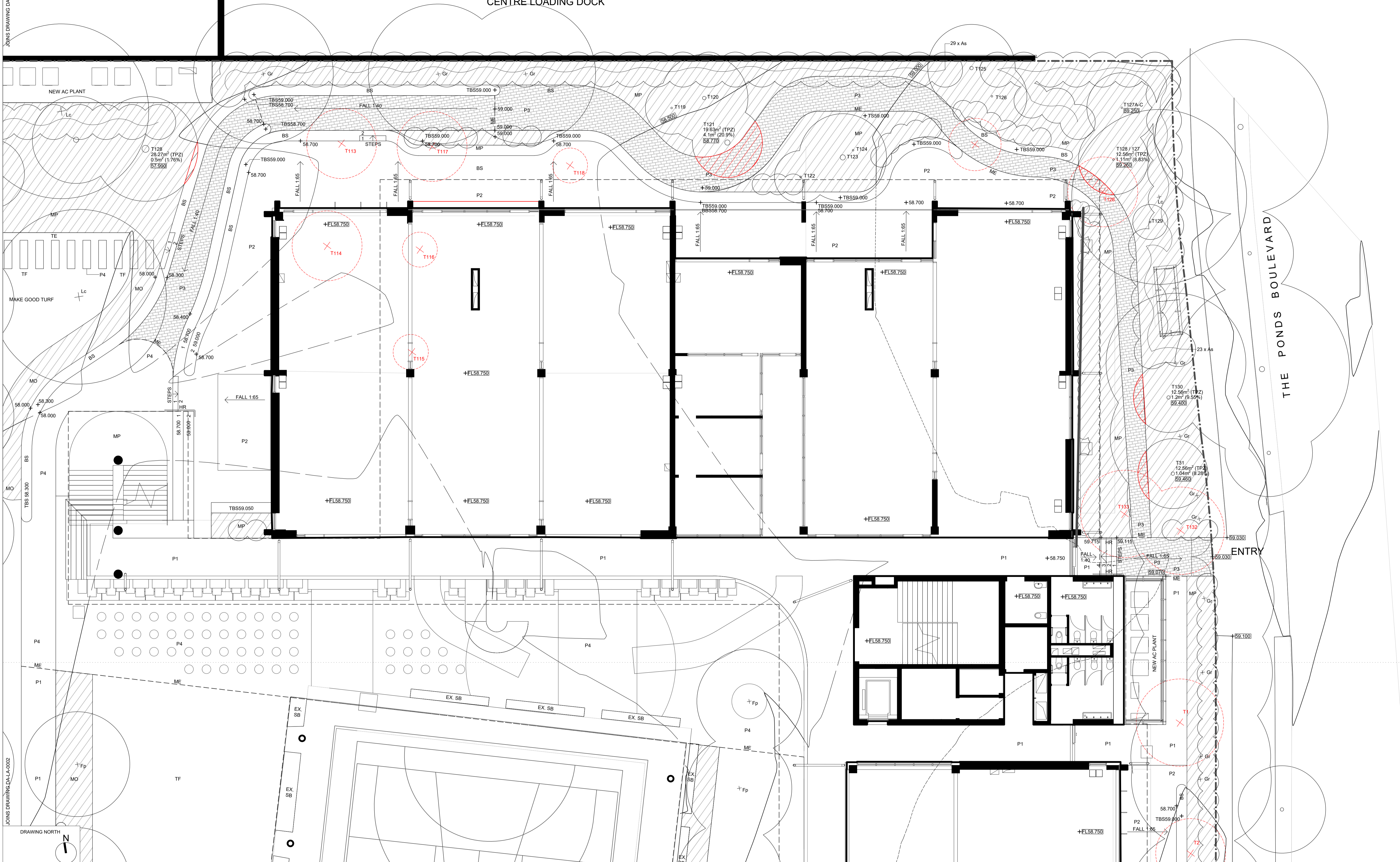
Project
John Palmer Public School
85 The Ponds Blvd, The Ponds NSW 2769

Status
SSDA SUBMISSION

Title
DETAIL LANDSCAPE PLAN
SHEET 1

Drawing Number
DA-LA-0002

Revision
A



Drawing Disclaimer:
Do not scale from drawings. Verify all dimensions on site before commencing work. Copying or reproduction of this drawing is strictly prohibited without the consent of PTW Architects

Note
PTW takes no responsibility for external building elements. Anything connected with any design, materials selection, construction or installation of any cladding, facade or external building element must be checked by and remains the responsibility of others, including suitably qualified experts as may be required.

Rev	Amendment	By	Chk**	Date
A	SSDA SUBMISSION	GM	GM	21/10/08

***Registered Architect**
DHJ Diane H Jones NSW Arch 4778

****Registered Landscape Architect**
GM Glenn McIntosh AILA

Consultants

Client

Architect
PTW Architects
Level 11, 88 Phillip Street
Sydney NSW 2000 Australia
T +61 2 9232 5877
ptw.com.au

Peddie Thorp & Walker P/L
ABN 23 000 454 624
trading as PTW Architects

NSW Nominated Architects
S Parsons Architect No. 6098
D Jones Architect No. 4778

PTW

1:100 @ A1

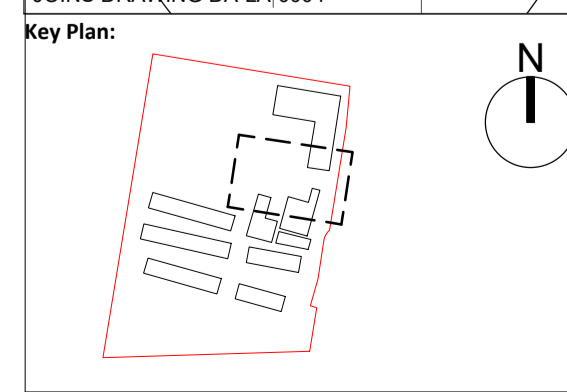
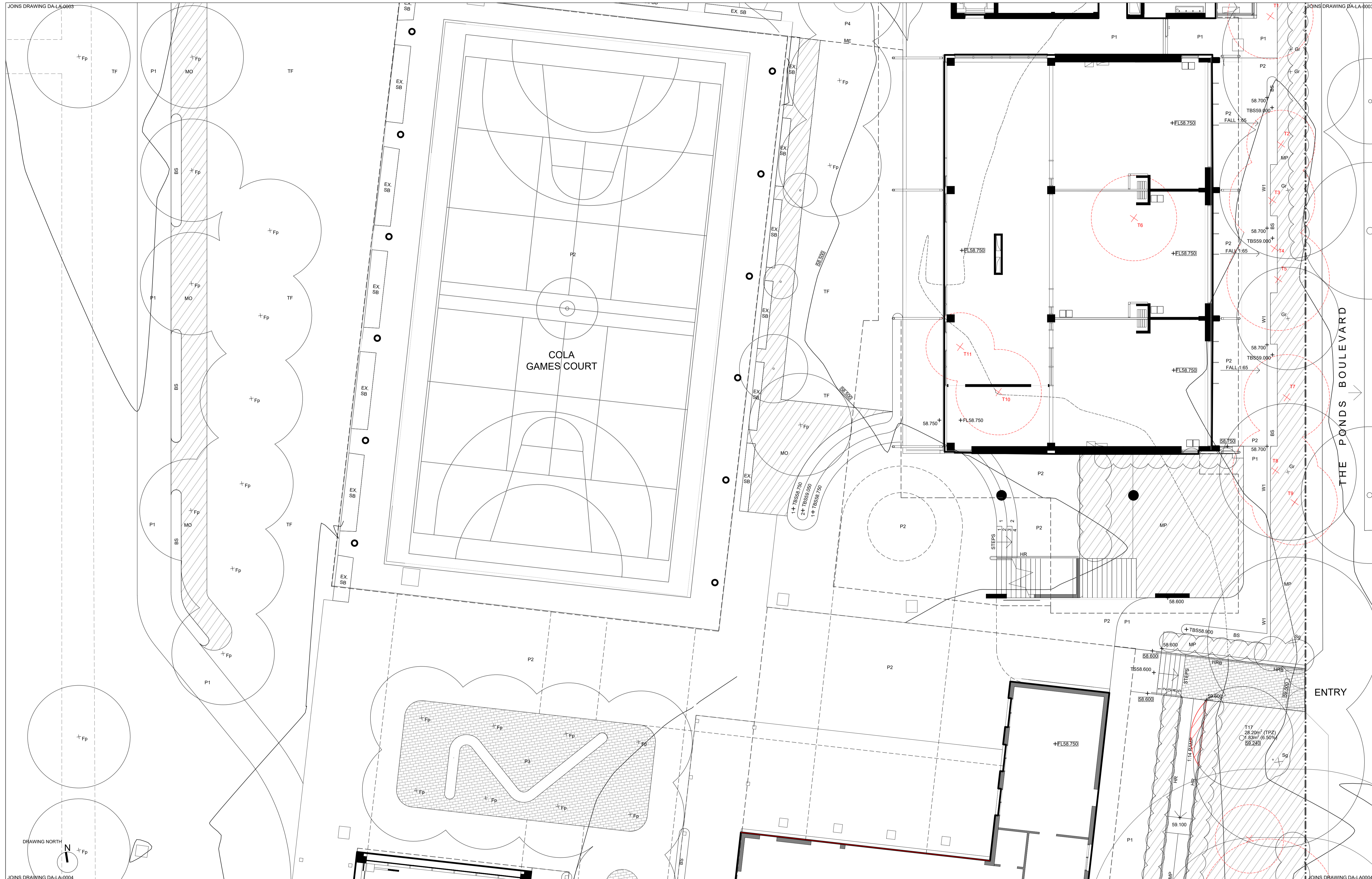
Project
John Palmer Public School
85 The Ponds Blvd, The Ponds NSW 2769

Status
SSDA SUBMISSION

Title
DETAIL LANDSCAPE PLAN
SHEET 2

Drawing Number
DA-LA-0003

Revision
A



Drawing Disclaimer:
Do not scale from drawings. Verify all dimensions on site before commencing work. Copying or reproduction of this drawing is strictly prohibited without the consent of PTW Architects

Note:
PTW takes no responsibility for external building elements. Anything connected with any design, materials selection, construction or installation of any cladding, facade or external building element must be checked by and remains the responsibility of others, including suitably qualified experts as may be required.

Rev	Amendment	By	Chk**	Date
A	SSDA SUBMISSION	GM	GM	21/10/08

***Registered Architect**
DHJ Diane H Jones NSW Arch 4778

****Registered Landscape Architect**
GM Glenn McIntosh AILA

Consultants

Client

Architect
PTW Architects
Level 11, 88 Phillip Street
Sydney NSW 2000 Australia
T +61 2 9232 5877
ptw.com.au

Peddie Thorp & Walker P/L
ABN 23 000 454 624
trading as PTW Architects

NSW Nominated Architects
S Parsons Architect No. 6098
D Jones Architect No. 4778

PTW

1:100 @ A1

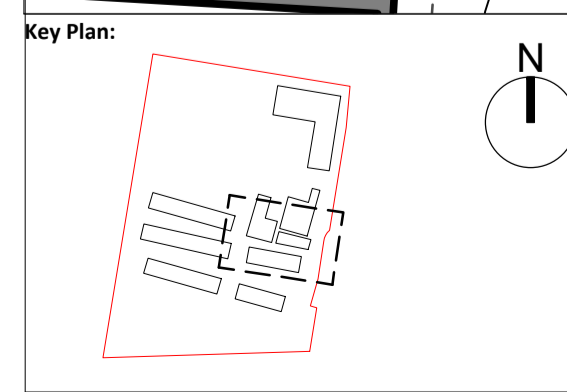
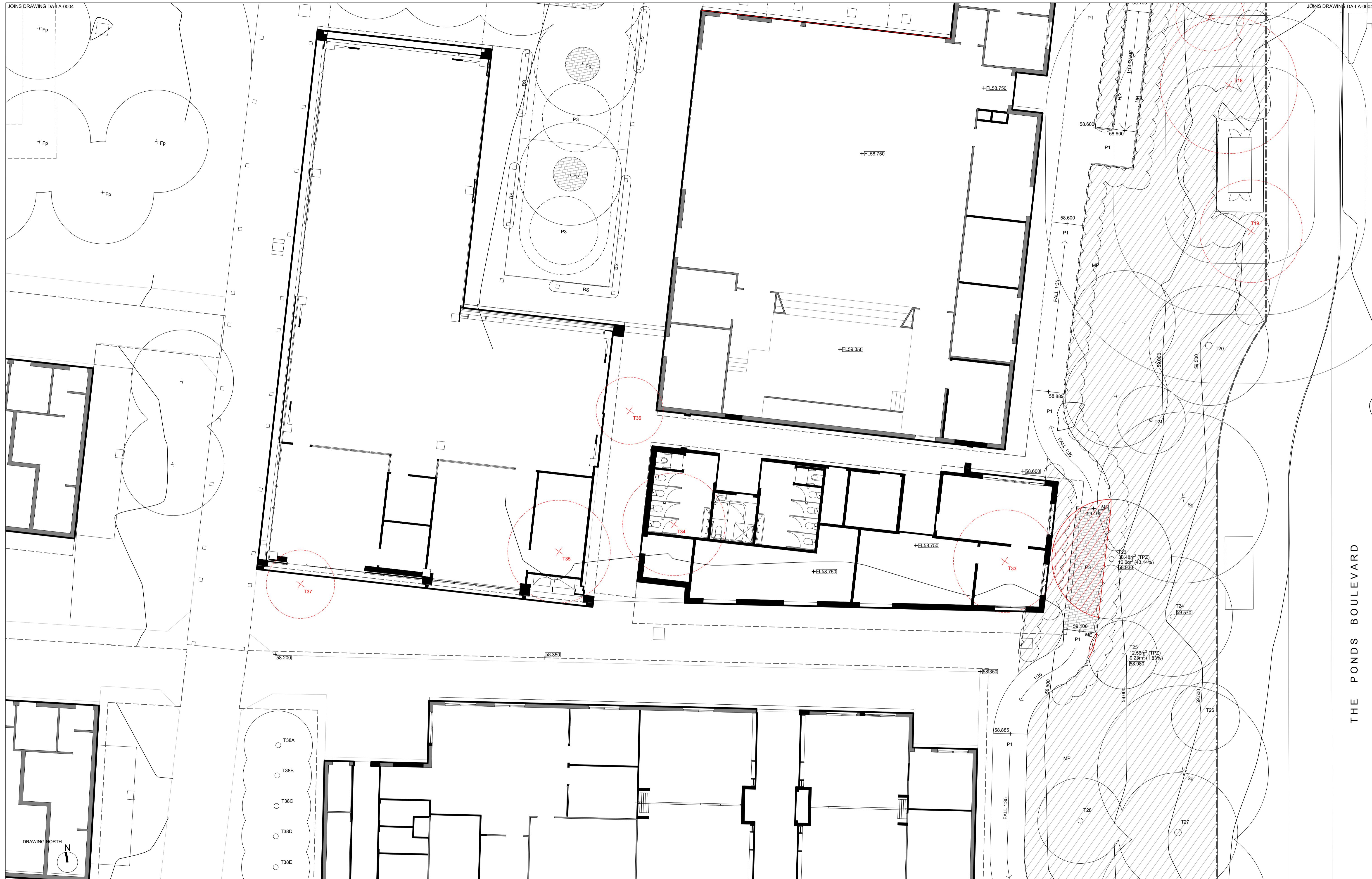
Project
John Palmer Public School
85 The Ponds Blvd, The Ponds NSW 2769

Status
SSDA SUBMISSION

Title
DETAIL LANDSCAPE PLAN
SHEET 3

Drawing Number
DA-LA-0004

Revision
A



Drawing Disclaimer:
Do not scale from drawings.
Verify all dimensions on site before commencing work.
Copying or reproduction of this drawing is strictly prohibited without the consent of PTW Architects

Note
PTW takes no responsibility for external building elements. Anything connected with any design, materials selection, construction or installation of any cladding, facade or external building element must be checked by and remains the responsibility of others, including suitably qualified experts as may be required.

Rev	Amendment	By	Chk**	Date
A	SSDA SUBMISSION	GM	GM	21/10/08

***Registered Architect**
DHJ Diane H Jones NSW Arch 4778

****Registered Landscape Architect**
GM Glenn McIntosh AILA

Consultants

Client

Architect
PTW Architects
Level 11, 88 Phillip Street
Sydney NSW 2000 Australia
T +61 2 9232 5877
ptw.com.au

PTW
1:100 @ A1

Project
John Palmer Public School
85 The Ponds Blvd, The Ponds NSW 2769

Status
SSDA SUBMISSION

Title
DETAIL LANDSCAPE PLAN
SHEET 4

Drawing Number
DA-LA-0005

Revision
A



Peddie Thorp & Walker P/L
ABN 23 000 454 624
trading as PTW Architects

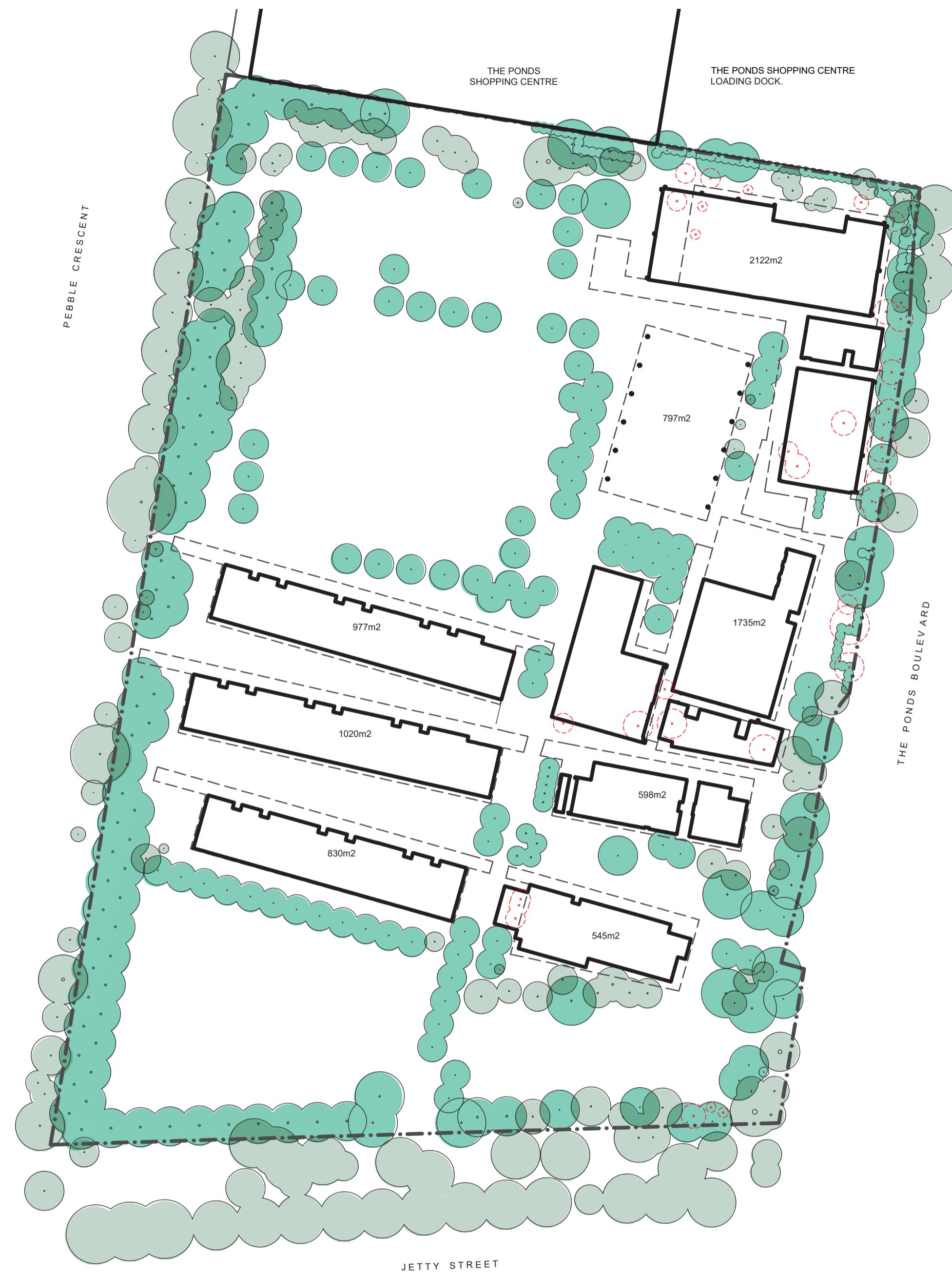
NSW Nominated Architects
S Parsons Architect No. 6098
D Jones Architect No. 4778

THE PONDS BOULEVARD



CANOPY AREA CALCULATIONS
 SITE AREA: 29,829m² EX. TREE CANOPY COVER: 2,582m² (8.7%)
 BUILDING AREA: 8,624m²

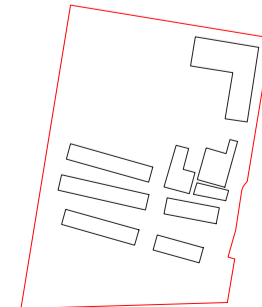
- LEGEND**
- SITE BOUNDARY
 - EXISTING TREE TO BE RETAINED
 - EXISTING TREE TO BE REMOVED, REFER LANDSCAPE DRAWINGS



CANOPY AREA CALCULATIONS
 SITE AREA: 29,829m² NEW TREE CANOPY COVER: 7,986m² (26.8%)
 BUILDING AREA: 8,624m²

- LEGEND**
- SITE BOUNDARY
 - EXISTING TREE TO BE RETAINED
 - EXISTING TREE TO BE REMOVED, REFER LANDSCAPE DRAWINGS
 - NEW TREE PLANTING

Key Plan:



Drawing Disclaimer:
 Do not scale from drawings.
 Verify all dimensions on site before commencing work.
 Copying or reproduction of this drawing is strictly prohibited without the consent of PTW Architects

Note
 PTW takes no responsibility for external building elements. Anything connected with any design, materials selection, construction or installation of any cladding, facade or external building element must be checked by and remains the responsibility of others, including suitably qualified experts as may be required.

Rev	Amendment	By	Chk**	Date
A	SSDA SUBMISSION	GM	GM	21/10/08

***Registered Architect**
 DHJ Diane H Jones NSW Arch 4778

****Registered Landscape Architect**
 GM Glenn McIntosh AILA

Consultants

Client



Education

Architect
 PTW Architects
 Level 11, 88 Phillip Street
 Sydney NSW 2000 Australia
 T +61 2 9232 5877
 ptw.com.au

Peddie Thorp & Walker P/L
 ABN 23 000 454 624
 trading as PTW Architects

NSW Nominated Architects
 S Parsons Architect No. 6098
 D Jones Architect No. 4778



0 1 2 5 8m
 1:750 @ A1

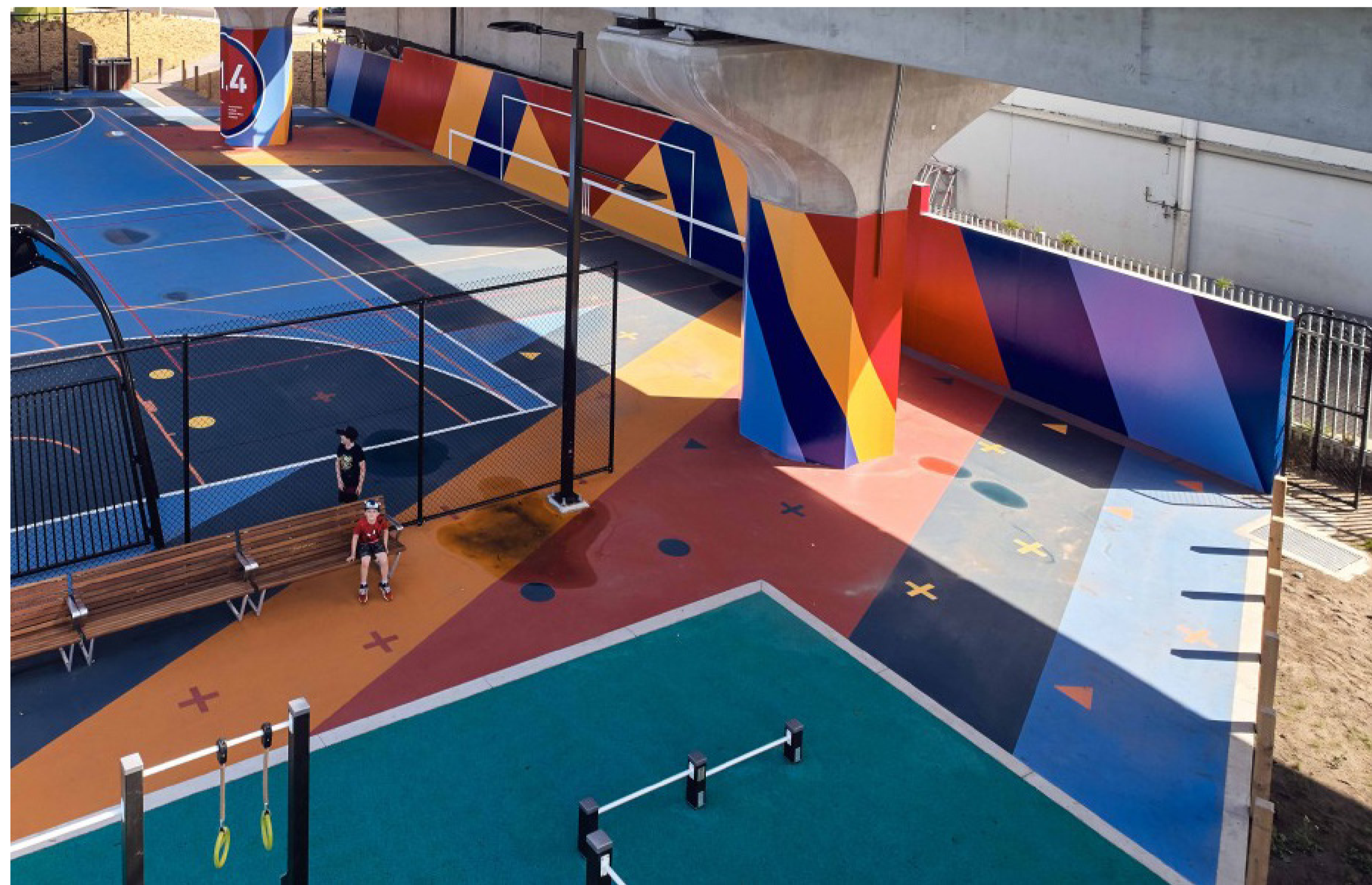
Project
John Palmer Public School
 85 The Ponds Blvd, The Ponds NSW 2769

Status
 SSDA SUBMISSION

Title
TREE CANOPY COVER

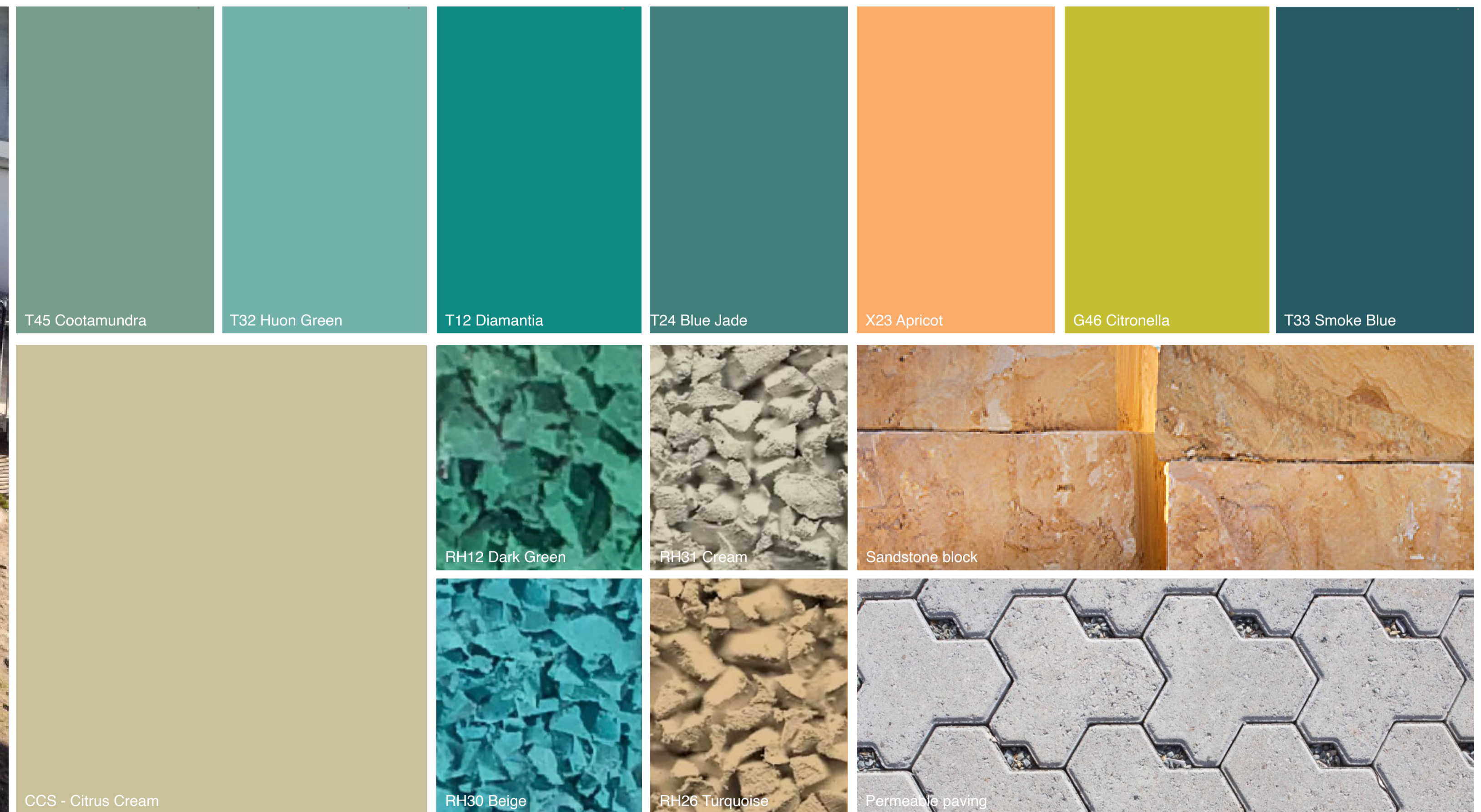
Drawing Number Revision

DA-LA-0010 A



EXTERNAL ACTIVE PLAY SPACE
 A 'dynamic graphic' to new active playing spaces, games courts and applied to sections of existing Ponds Shopping Centre wall that forms the northern boundary to School. Graphic formed by coloured concrete and painted concrete surface treatment to reflect local stories of the area.

CONCRETE PAINTING AND LINE MARKING
 Product: Dulux, Roadmaster A1

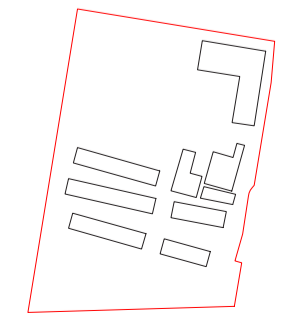


COLOURED CONCRETE PAVING
 Product: CCS Full Depth Concrete Colour
 Colour: Citrus Cream

RUBBER SOFTFALL PAVING
 Product: Surface Designs, Rosehill TPV

SANDSTONE BLOCK RETAINING WALL AND ACTIVE PLAY INTERFACE
 Product: Sandstone Block
PERMEABLE PAVING
 Product: Eco Tri-hex Paving

Key Plan:



Drawing Disclaimer:
 Do not scale from drawings. Verify all dimensions on site before commencing work. Copying or reproduction of this drawing is strictly prohibited without the consent of PTW Architects

Note
 PTW takes no responsibility for external building elements. Anything connected with any design, materials selection, construction or installation of any cladding, facade or external building element must be checked by and remains the responsibility of others, including suitably qualified experts as may be required.

Rev	Amendment	By	Chk**	Date
A	SSDA SUBMISSION	GM	GM	21/10/08

*Registered Architect			
DHJ	Diane H Jones	NSW Arch 4778	
**Registered Landscape Architect			
GM	Glenn McIntosh	AILA	

Consultants	

Client

NSW GOVERNMENT Education

Architect
 PTW Architects
 Level 11, 88 Phillip Street
 Sydney NSW 2000 Australia
 T +61 2 9232 5877
 ptw.com.au

Architects
 Peddle Thorp & Walker P/L
 ABN 23 000 454 624
 trading as PTW Architects

NSW Nominated Architects
 S Parsons Architect No. 6098
 D Jones Architect No. 4778

PTW

0 1 2 5 8m
 NA @ A1

Project
 John Palmer Public School
 85 The Ponds Blvd, The Ponds NSW 2769

Status
 SSDA SUBMISSION

Title
 LANDSCAPE MATERIALS AND FINISHES

Drawing Number
 DA-LA-0020

Revision
 A



Lophostemon confertus



Grevillea robusta



Callistemon salignus



Lomandra hystrix



Crinum pedunculatum



Syncarpia glomulifera



Fraxinus pennsylvanica 'Cinnazam'



Melaleuca quinquenervia



Acmena smithii



Juncus usitatus

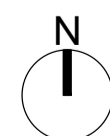
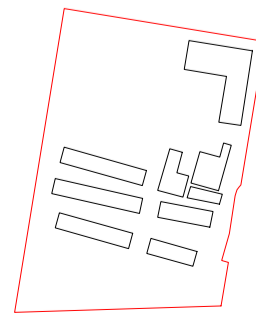


Dianella revoluta



Themeda australis

Key Plan:



Drawing Disclaimer:
Do not scale from drawings. Verify all dimensions on site before commencing work. Copying or reproduction of this drawing is strictly prohibited without the consent of PTW Architects

Note
PTW takes no responsibility for external building elements. Anything connected with any design, materials selection, construction or installation of any cladding, facade or external building element must be checked by and remains the responsibility of others, including suitably qualified experts as may be required.

Rev	Amendment	By	Chk**	Date
A	SSDA SUBMISSION	GM	GM	21/10/08

*Registered Architect	
DHJ	Diane H Jones NSW Arch 4778
**Registered Landscape Architect	
GM	Glenn McIntosh AILA

Consultants	
Client	



Education

Architect
PTW Architects
Level 11, 88 Phillip Street
Sydney NSW 2000 Australia
T +61 2 9232 5877
ptw.com.au



0 1 2 5 @ A1
Project
John Palmer Public School
85 The Ponds Blvd, The Ponds NSW 2769

Status
SSDA SUBMISSION

Title
LANDSCAPE PLANTING

Drawing Number
DA-LA-0021

Revision
A