

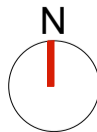
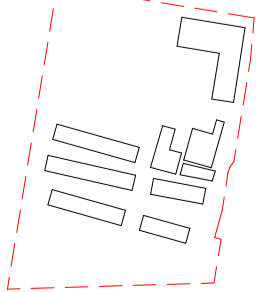


John Palmer Public School

85 The Ponds Blvd, The Ponds NSW 2769

DA-AR-0000	COVER PAGE	DA-AR-B102	BUILDING B - DEMO PLAN - LEVEL 00
DA-AR-0011	SITE - AERIAL VIEW - EXISTING	DA-AR-B103	BUILDING B - GA - LEVEL 00
DA-AR-0012	SITE + CONTEXT PLAN	DA-AR-B113	BUILDING B - GA - LEVEL 01 - ROOF
DA-AR-0013	SITE ANALYSIS	DA-AR-B201	BUILDING B - ELEVATIONS
DA-AR-0020	SITE PLAN - RL 58.75	DA-AR-B202	BUILDING B - ELEVATIONS
DA-AR-0021	SITE PLAN - RL 62.50	DA-AR-B301	BUILDING B - SECTIONS
DA-AR-0022	SITE PLAN - RL 66.25	DA-AR-B302	BUILDING B - SECTIONS
DA-AR-0023	SITE PLAN - ROOF		
DA-AR-0024	PUBLIC DOMAIN PLAN	DA-AR-D102	BUILDING D - DEMO PLAN - LEVEL 00
		DA-AR-D103	BUILDING D - GA - LEVEL 00
DA-AR-0301	SITE SECTIONS	DA-AR-D201	BUILDING D - ELEVATIONS
DA-AR-0302	SITE SECTIONS		
DA-AR-0303	SITE SECTIONS	DA-AR-F101	BUILDING F - EXISTING PLAN - LEVEL 00
DA-AR-0304	SITE SECTIONS	DA-AR-F103	BUILDING F - GA - LEVEL 00
DA-AR-0305	STREET ELEVATION		
DA-AR-0306	STREET VIEWS	DA-LA-0001	LANDSCAPE PLAN
		DA-LA-0002	DETAIL LANDSCAPE PLAN - SHEET 1
DA-AR-0401	3D VIEWS	DA-LA-0003	DETAIL LANDSCAPE PLAN - SHEET 2
DA-AR-0402	3D VIEWS	DA-LA-0004	DETAIL LANDSCAPE PLAN - SHEET 3
DA-AR-0403	3D VIEWS	DA-LA-0005	DETAIL LANDSCAPE PLAN - SHEET 4
DA-AR-0404	3D VIEWS	DA-LA-0010	TREE CANOPY COVER
DA-AR-0405	3D VIEWS	DA-LA-0020	LANDSCAPE MATERIALS AND FINISHES
DA-AR-0406	3D VIEWS	DA-LA-0021	LANDSCAPE PLANTING
DA-AR-0407	3D VIEWS		
DA-AR-0501	MATERIAL BOARD		
DA-AR-2001	SOLAR ACCESS STUDIES		
DA-AR-2002	SOLAR ACCESS STUDIES		
DA-AR-2003	SOLAR ACCESS STUDIES		
DA-AR-2004	SOLAR ACCESS STUDIES		
DA-AR-2005	SOLAR ACCESS STUDIES		
DA-AR-2006	SOLAR ACCESS STUDIES		
DA-AR-N103	GA - LEVEL 00		
DA-AR-N113	GA - LEVEL 01		
DA-AR-N123	GA - LEVEL 02		
DA-AR-N133	GA - LEVEL 03 - ROOF		
DA-AR-N201	ELEVATIONS - SHEET 1		
DA-AR-N202	ELEVATIONS - SHEET 2		
DA-AR-N301	SECTIONS - SHEET 1		
DA-AR-N302	SECTIONS - SHEET 2		
DA-AR-N501	FACADE SECTIONS - SHEET 1		
DA-AR-N502	FACADE SECTIONS - SHEET 2		
DA-AR-N503	FACADE SECTIONS - SHEET 3		
DA-AR-N504	FACADE SECTIONS - SHEET 4		
DA-AR-N505	FACADE SECTIONS - SHEET 5		
DA-AR-N506	FACADE SECTIONS - SHEET 6		
DA-AR-A102	BUILDING A - DEMO PLAN - LEVEL 00		
DA-AR-A103	BUILDING A - GA - LEVEL 00		
DA-AR-A201	BUILDING A - ELEVATIONS		
DA-AR-A301	BUILDING A - SECTIONS		

Key Plan:



Drawing Disclaimer:
Do not scale from drawings.
Verify all dimensions on site before commencing work.
Copying or reproduction of this drawing is strictly prohibited without the consent of PTW Architects

Note
PTW takes no responsibility for external building elements. Anything connected with any design, materials selection, construction or installation of any cladding, facade or external building element must be checked by and remains the responsibility of others, including suitably qualified experts as may be required.

Rev	Amendment	By	Chk*	Date
B	SSDA SUBMISSION	MB	DJ	211008
A	DRAFT SSDA SUBMISSION	MB	DJ	210924

*Registered Architect		
DHJ	Diane H Jones	NSW Arch 4778

Consultants

Client



Education

Architect
PTW Architects
Level 11, 88 Phillip Street
Sydney NSW 2000 Australia
T +61 2 9232 5877
ptw.com.au

Peddie Thorp & Walker P/L
ABN 23 000 454 624
trading as PTW Architects

NSW Nominated Architects
S Parsons Architect No.6098
D Jones Architect No.4778



Project PA030470

John Palmer Public School
85 The Ponds Blvd, The Ponds NSW 2769

Status
SSDA SUBMISSION

Title
SSDA
COVER

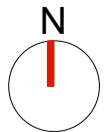
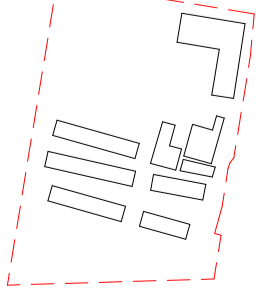
Drawing Number
DA-AR-0000

Revision
B



1 SITE PLAN - L00 - RL 58.750
1 : 500 @A1

Key Plan:



Drawing Disclaimer:
Do not scale from drawings.
Verify all dimensions on site before commencing work.
Copying or reproduction of this drawing is strictly prohibited without the consent of PTW Architects

Note
PTW takes no responsibility for external building elements. Anything connected with any design, materials selection, construction or installation of any cladding, facade or external building element must be checked by and remains the responsibility of others, including suitably qualified experts as may be required.

Rev	Amendment	By	Chk*	Date
B	SSDA SUBMISSION	MB	DJ	211008
A	DRAFT SSDA SUBMISSION	MB	DJ	210924

By	Chk*	Date
MB	DJ	211008
MB	DJ	210924

*Registered Architect
DHJ Diane H Jones NSW Arch 4778

Consultants

Client



Education

Architect
PTW Architects
Level 11, 88 Phillip Street
Sydney NSW 2000 Australia
T +61 2 9232 5877
ptw.com.au

Peddie Thorp & Walker P/L
ABN 23 000 454 624
trading as PTW Architects

NSW Nominated Architects
S Parsons Architect No.6098
D Jones Architect No.4778

0 5 10 20 30 40m
1 : 500 @ A1

Project PA030470

John Palmer Public School
85 The Ponds Blvd, The Ponds NSW 2769

Status
SSDA SUBMISSION

Title
SSDA

SITE PLAN - DEMO

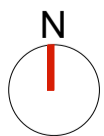
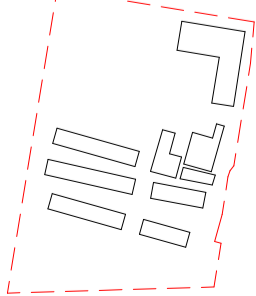
Drawing Number
DA-AR-0010

Revision
B



1 AERIAL VIEW - EXISTING
1 : 500 @A1

Key Plan:



Drawing Disclaimer:
Do not scale from drawings.
Verify all dimensions on site before commencing work.
Copying or reproduction of this drawing is strictly prohibited without the consent of PTW Architects

Note
PTW takes no responsibility for external building elements. Anything connected with any design, materials selection, construction or installation of any cladding, facade or external building element must be checked by and remains the responsibility of others, including suitably qualified experts as may be required.

Rev	Amendment	By	Chk*	Date
B	SSDA SUBMISSION	MB	DJ	211008
A	DRAFT SSDA SUBMISSION	MB	DJ	210924

*Registered Architect
DHJ Diane H Jones NSW Arch 4778

Consultants

Client



Education

Architect
PTW Architects
Level 11, 88 Phillip Street
Sydney NSW 2000 Australia
T +61 2 9232 5877
ptw.com.au

Peddie Thorp & Walker P/L
ABN 23 000 454 624
Trading as PTW Architects

NSW Nominated Architects
S Parsons Architect No.6098
D Jones Architect No.4778

0 5 10 20 30 40m
1 : 500 @ A1
Project PA030470
John Palmer Public School
85 The Ponds Blvd, The Ponds NSW 2769
Status
SSDA SUBMISSION

Title
SSDA
SITE - AERIAL VIEW - EXISTING
Drawing Number
DA-AR-0011
Revision
B



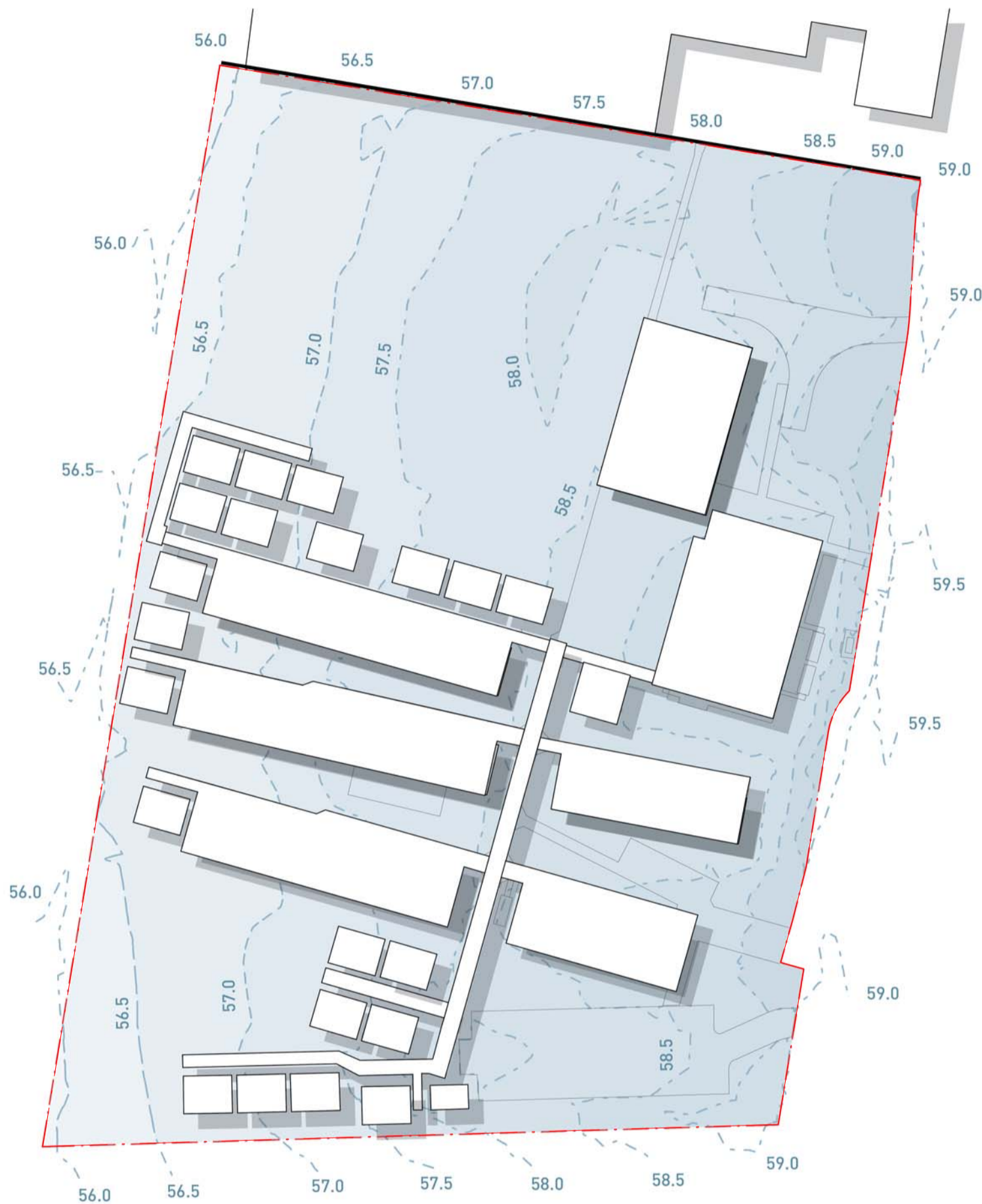
1 AERIAL VIEW - ACCESS POINTS AND FACILITIES
1 : 1500 @A1

- Site access - vehicular
- Site access - pedestrian
- Site Boundary
- Bicycle/ scooter parking racks
- Student Drop off/ pick up zones
- Bus zones
- The Ponds Shopping centre vehicular access
- Support learning unit access
- School entry signage



2 AERIAL VIEW - COMMUNITY FACILITIES
1 : 1500 @A1

- Site access - vehicular
- Site access - pedestrian
- Site Boundary
- The Ponds Shopping Centre
- Low rise residences
- Second Ponds Creek
- The Ponds Community Hub
- The Ponds shopping centre vehicular access



1 LEVELS AND CONTOURS
1 : 1000 @A1

LEGEND

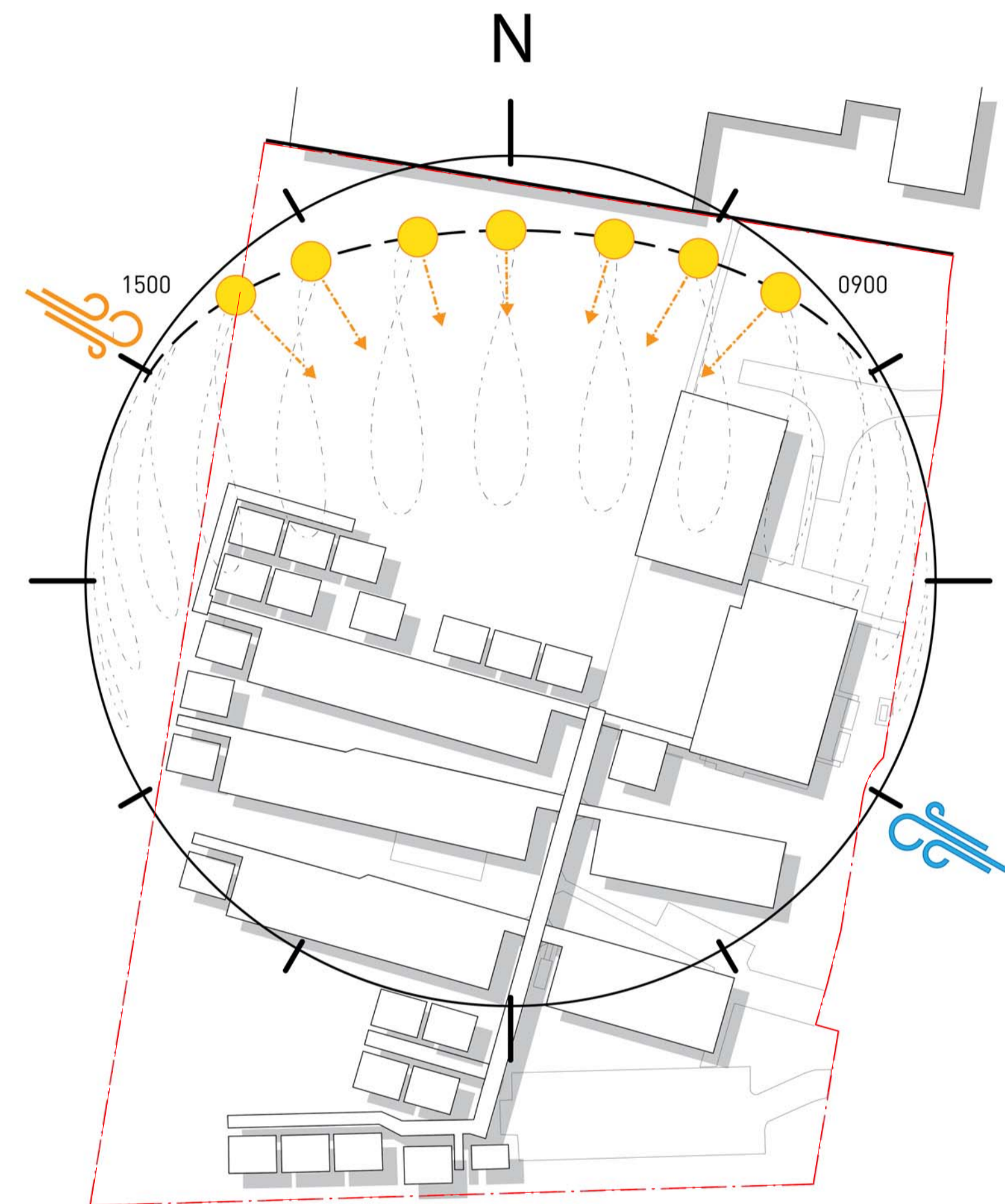
- Site Boundary
- 0.5m Contour Lines



2 SIGNIFICANT TREES AND OPEN SPACE
1 : 1000 @A1

LEGEND

- Site Boundary
- Open Space
- Medium Significance Tree
- High Significance Tree

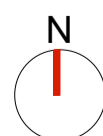
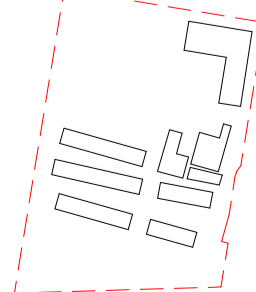


3 SUNPATH ANALYSIS AND SEASONAL WINDS
1 : 1000 @A1

LEGEND

- Site Boundary
- Winter Prevailing Winds
- Summer Prevailing Winds

Key Plan:



Drawing Disclaimer:
Do not scale from drawings.
Verify all dimensions on site before commencing work.
Copying or reproduction of this drawing is strictly prohibited without the consent of PTW Architects

Note
PTW takes no responsibility for external building elements. Anything connected with any design, materials selection, construction or installation of any cladding, facade or external building element must be checked by and remains the responsibility of others, including suitably qualified experts as may be required.

Rev	Amendment	By	Chk*	Date
B	SSDA SUBMISSION	MB	DJ	211008
A	DRAFT SSDA SUBMISSION	MB	DJ	210924

***Registered Architect**
DHJ Diane H Jones NSW Arch 4778

Consultants

Client



Education

Architect
PTW Architects
Level 11, 88 Phillip Street
Sydney NSW 2000 Australia
T +61 2 9232 5877
ptw.com.au

Peddie Thorp & Walker P/L
ABN 23 000 454 624
trading as PTW Architects

NSW Nominated Architects
S Parsons Architect No.6098
D Jones Architect No.4778



0 10 20 50 80m
As indicated
@ A1
Project PA030470
John Palmer Public School
85 The Ponds Blvd, The Ponds NSW 2769
Status
SSDA SUBMISSION

Title
SSDA
SITE ANALYSIS

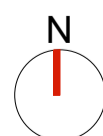
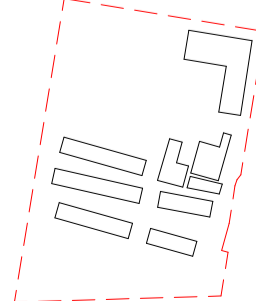
Drawing Number
DA-AR-0013

Revision
B



1 SITE PLAN - L00 - RL 58.750
1 : 500 @A1

Key Plan:



Drawing Disclaimer:
Do not scale from drawings.
Verify all dimensions on site before commencing work.
Copying or reproduction of this drawing is strictly prohibited without the consent of PTW Architects

Note
PTW takes no responsibility for external building elements. Anything connected with any design, materials selection, construction or installation of any cladding, facade or external building element must be checked by and remains the responsibility of others, including suitably qualified experts as may be required.

Rev	Amendment	By	Chk*	Date
B	SSDA SUBMISSION	MB	DJ	211008
A	DRAFT SSDA SUBMISSION	MB	DJ	210924

*Registered Architect	Consultants	Client
DHJ Diane H Jones NSW Arch 4778		

Architect
PTW Architects Level 11, 88 Phillip Street Sydney NSW 2000 Australia T +61 2 9232 5877 ptw.com.au



Education

Peddie Thorp & Walker P/L ABN 23 000 454 624 trading as PTW Architects	NSW Nominated Architects S Parsons Architect No.5098 D Jones Architect No.4778
--	--



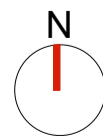
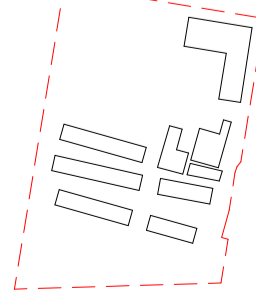
0 5 10 20 30 40m	Title SSDA SITE PLAN - RL 58.75
As indicated Project PA030470	Drawing Number DA-AR-0020
Status DRAFT SSDA SUBMISSION	Revision B



- LEGEND
- HB
 - PAA
 - STAFF AMENITIES
 - STORAGE / SERVICES / COMMS
 - STUDENT AMENITIES
 - WD
- LEGEND
- Existing Tree
 - Removed Tree

1 SITE PLAN - L01 - RL 62.500
1 : 500 @A1

Key Plan:



Drawing Disclaimer:
Do not scale from drawings.
Verify all dimensions on site before commencing work.
Copying or reproduction of this drawing is strictly prohibited without the consent of PTW Architects

Note
PTW takes no responsibility for external building elements. Anything connected with any design, materials selection, construction or installation of any cladding, facade or external building element must be checked by and remains the responsibility of others, including suitably qualified experts as may be required.

Rev	Amendment	By	Chk*	Date
B	SSDA SUBMISSION	MB	DJ	211008
A	DRAFT SSDA SUBMISSION	MB	DJ	210924

*Registered Architect
DHJ Diane H Jones NSW Arch 4778

Consultants

Client



Education

Architect
PTW Architects
Level 11, 88 Phillip Street
Sydney NSW 2000 Australia
T +61 2 9232 5877
ptw.com.au

Peddie Thorp & Walker P/L
ABN 23 000 454 624
trading as PTW Architects

NSW Nominated Architects
S Parsons Architect No.5098
D Jones Architect No.4778



0 5 10 20 30 40m
As indicated
@ A1
Project PA030470
John Palmer Public School
85 The Ponds Blvd, The Ponds NSW 2769
Status
SSDA SUBMISSION

Title
SSDA
SITE PLAN - RL 62.50

Drawing Number
DA-AR-0021

Revision
B



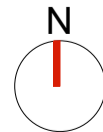
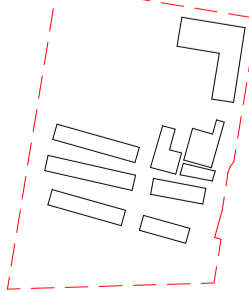
LEGEND

- HB
- OUTDOOR LEARNING AREAS
- PAA
- STAFF AMENITIES
- STORAGE / SERVICES / COMMS
- STUDENT AMENITIES
- WD

LEGEND

- Existing Tree
- Removed Tree

Key Plan:



Drawing Disclaimer:
Do not scale from drawings.
Verify all dimensions on site before commencing work.
Copying or reproduction of this drawing is strictly prohibited without the consent of PTW Architects

Note
PTW takes no responsibility for external building elements. Anything connected with any design, materials selection, construction or installation of any cladding, facade or external building element must be checked by and remains the responsibility of others, including suitably qualified experts as may be required.

Rev	Amendment	By	Chk*	Date
B	SSDA SUBMISSION	MB	DJ	211008
A	DRAFT SSDA SUBMISSION	MB	DJ	210924

*Registered Architect
DHJ Diane H Jones NSW Arch 4778

Consultants

Client



Education

Architect
PTW Architects
Level 11, 88 Phillip Street
Sydney NSW 2000 Australia
T +61 2 9232 5877
ptw.com.au

Peddie Thorp & Walker P/L
ABN 23 000 454 624
trading as PTW Architects

NSW Nominated Architects
S Parsons Architect No.6098
D Jones Architect No.4778



0 5 10 20 30 40m
As indicated
@ A1
Project PA030470
John Palmer Public School
85 The Ponds Blvd, The Ponds NSW 2769

Status
SSDA SUBMISSION

Title
SSDA
SITE PLAN - RL 66.25

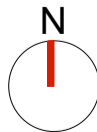
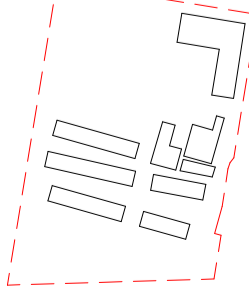
Drawing Number
DA-AR-0022

Revision
B



- LEGEND
- Existing Tree
 - Removed Tree

Key Plan:



Drawing Disclaimer:
Do not scale from drawings.
Verify all dimensions on site before commencing work.
Copying or reproduction of this drawing is strictly prohibited without the consent of PTW Architects

Note
PTW takes no responsibility for external building elements. Anything connected with any design, materials selection, construction or installation of any cladding, facade or external building element must be checked by and remains the responsibility of others, including suitably qualified experts as may be required.

Rev	Amendment	By	Chk*	Date
B	SSDA SUBMISSION	MB	DJ	211008
A	DRAFT SSDA SUBMISSION	MB	DJ	210924

*Registered Architect
DHJ Diane H Jones NSW Arch 4778

Consultants

Client



Education

Architect
PTW Architects
Level 11, 88 Phillip Street
Sydney NSW 2000 Australia
T +61 2 9232 5877
ptw.com.au



0 5 10 20 30 40m
As indicated
@ A1
Project PA030470
John Palmer Public School
85 The Ponds Blvd, The Ponds NSW 2769

Status
SSDA SUBMISSION

Title
SSDA
SITE PLAN - ROOF
Drawing Number
DA-AR-0023

Revision
B



1

SITE PLAN - PUBLIC DOMAIN
1 : 500 @A1

Key Plan:

N

Drawing Disclaimer:
Do not scale from drawings.
Verify all dimensions on site before commencing work.
Copying or reproduction of this drawing is strictly prohibited without the consent of PTW Architects

Note
PTW takes no responsibility for external building elements. Anything connected with any design, materials selection, construction or installation of any cladding, facade or external building element must be checked by and remains the responsibility of others, including suitably qualified experts as may be required.

Rev	Amendment	By	Chk*	Date	*Registered Architect	Consultants	Client
A	SSDA SUBMISSION	MB	DJ	211008	DHJ Diane H Jones NSW Arch 4778		

NSW
GOVERNMENT

Education

Architect
PTW Architects
Level 11, 88 Phillip Street
Sydney NSW 2000 Australia
T +61 2 9232 5877
ptw.com.au

Peddle Thorp & Walker P/L
ABN 23 000 454 624
trading as PTW Architects

NSW Nominated Architects
S Parsons Architect No.6098
D Jones Architect No.4778

01258m

As indicated

@ A1

Project

PA030470

John Palmer Public School
85 The Ponds Blvd, The Ponds NSW 2769

Status

SSDA SUBMISSION

Title

SSDA

PUBLIC DOMAIN PLAN

Drawing Number

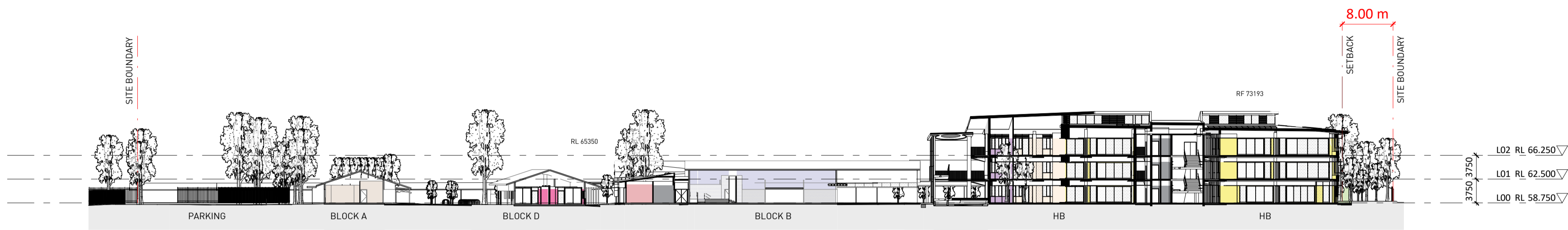
DA-AR-0024

Revision

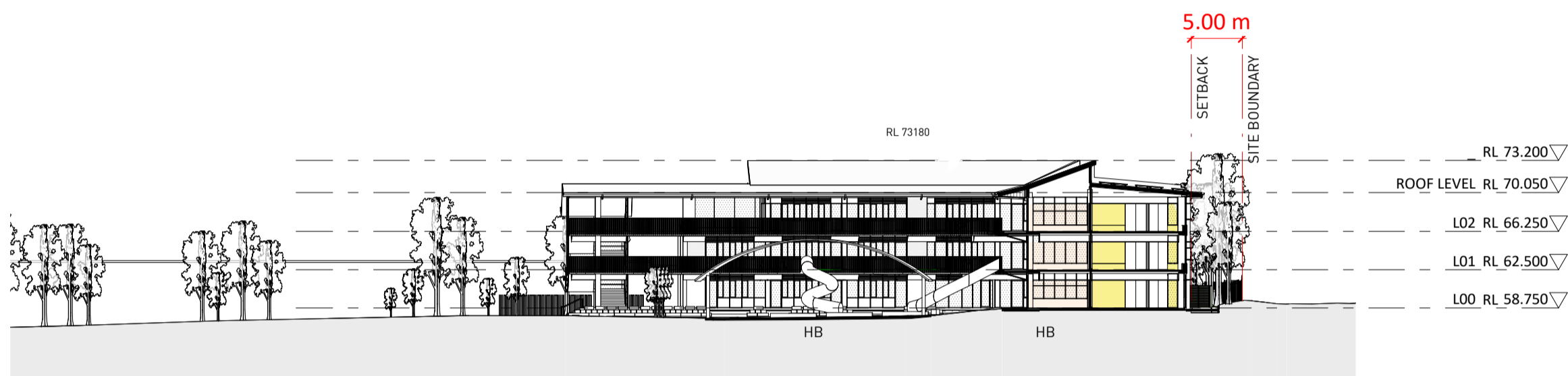
A

A1

10/12/2021 9:34:02 PM

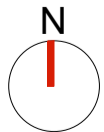
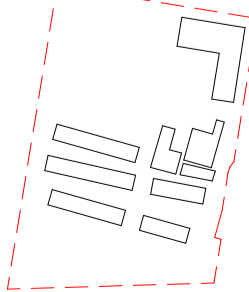


1 SECTION A
1 : 500 @A1



2 SECTION B
1 : 500 @A1

Key Plan:



Drawing Disclaimer:
Do not scale from drawings.
Verify all dimensions on site before commencing work.
Copying or reproduction of this drawing is strictly prohibited without the consent of PTW Architects

Note
PTW takes no responsibility for external building elements. Anything connected with any design, materials selection, construction or installation of any cladding, facade or external building element must be checked by and remains the responsibility of others, including suitably qualified experts as may be required.

Rev	Amendment	By	Chk*	Date
B	SSDA SUBMISSION	MB	DJ	211008
A	DRAFT SSDA SUBMISSION	MB	DJ	210924

*Registered Architect		
DHJ	Diane H Jones	NSW Arch 4778

Consultants

Client



Education

Architect
PTW Architects
Level 11, 88 Phillip Street
Sydney NSW 2000 Australia
T +61 2 9232 5877
ptw.com.au

Peddie Thorp & Walker P/L
ABN 23 000 454 624
trading as PTW Architects

NSW Nominated Architects
S Parsons Architect No.6098
D Jones Architect No.4778

0 5 10 20 30 40m
1 : 500 @ A1

Project PA030470

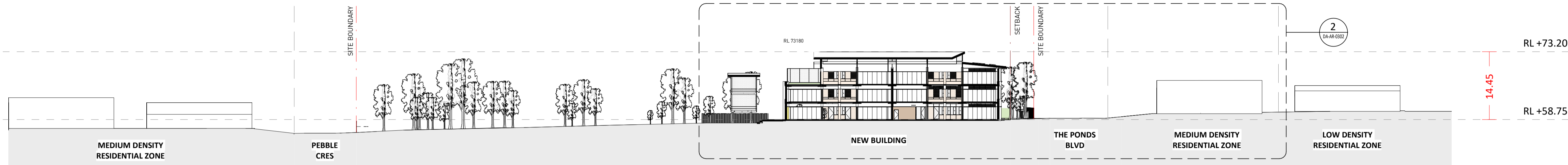
John Palmer Public School
85 The Ponds Blvd, The Ponds NSW 2769

Status
SSDA SUBMISSION

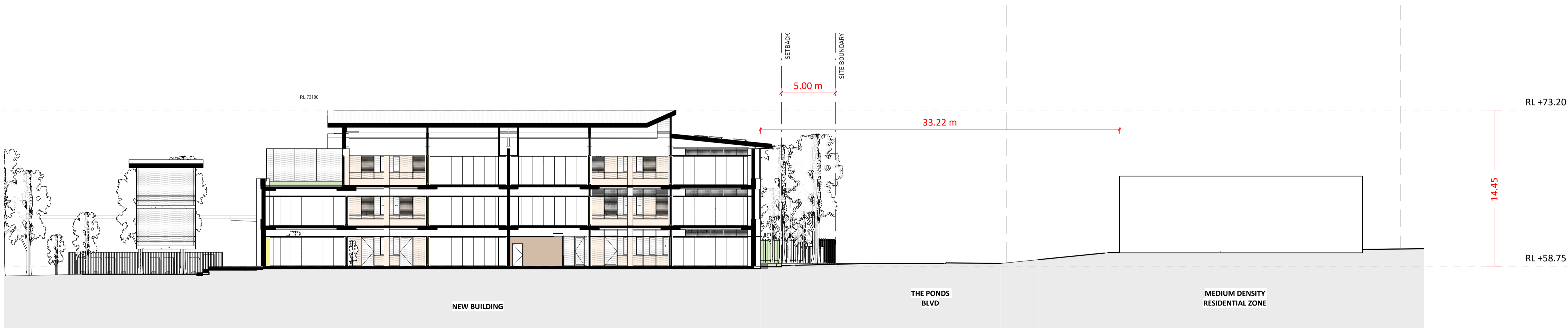
Title
SSDA
SITE SECTIONS

Drawing Number
DA-AR-0301

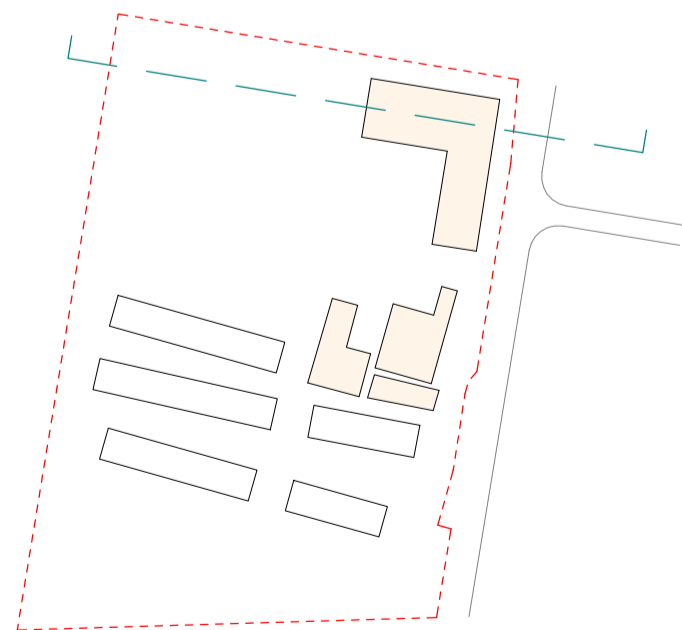
Revision
B



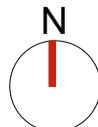
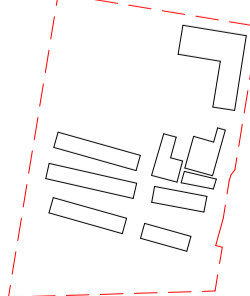
1 SECTION THROUGH THE NORTHERN WING
1 : 500 @A1



2 SECTION THROUGH ROAD THE NORTHERN WING
1 : 200 @A1



Key Plan:



Drawing Disclaimer:
Do not scale from drawings.
Verify all dimensions on site before commencing work.
Copying or reproduction of this drawing is strictly prohibited without the consent of PTW Architects

Note
PTW takes no responsibility for external building elements. Anything connected with any design, materials selection, construction or installation of any cladding, facade or external building element must be checked by and remains the responsibility of others, including suitably qualified experts as may be required.

Rev	Amendment	By	Chk*	Date
B	SSDA SUBMISSION	MB	DJ	211008
A	DRAFT SSDA SUBMISSION	MB	DJ	210924

***Registered Architect**
DHJ Diane H Jones NSW Arch 4778

Consultants

Client



Education

Architect
PTW Architects
Level 11, 88 Phillip Street
Sydney NSW 2000 Australia
T +61 2 9232 5877
ptw.com.au

Peddie Thorp & Walker P/L
ABN 23 000 454 624
Trading as PTW Architects

NSW Nominated Architects
S Parsons Architect No. 6098
D Jones Architect No. 4778



As indicated
Project PA030470

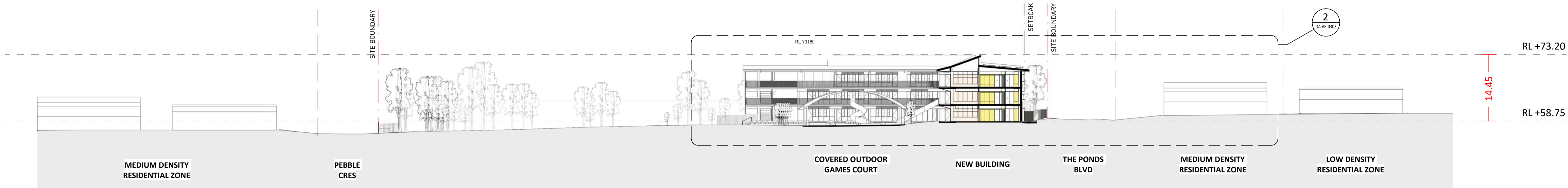
John Palmer Public School
85 The Ponds Blvd, The Ponds NSW 2769

Status
SSDA SUBMISSION

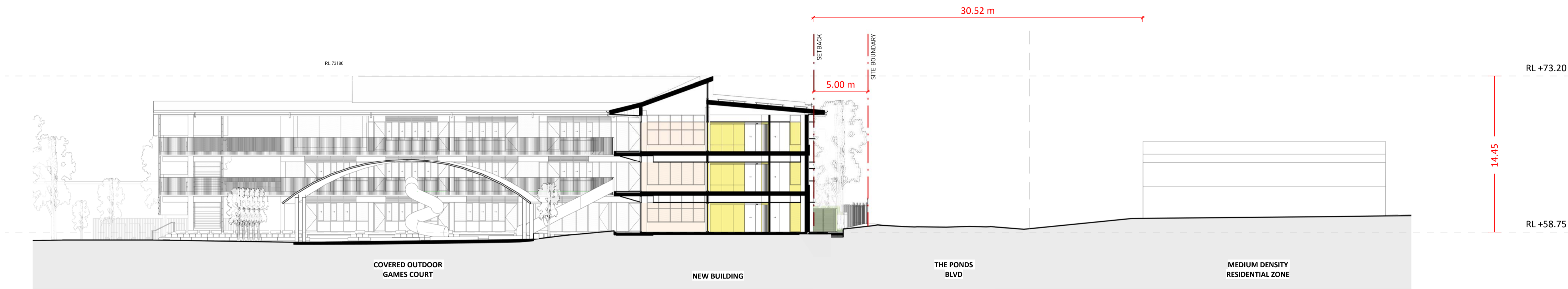
Title
SSDA
SITE SECTIONS

Drawing Number
DA-AR-0302

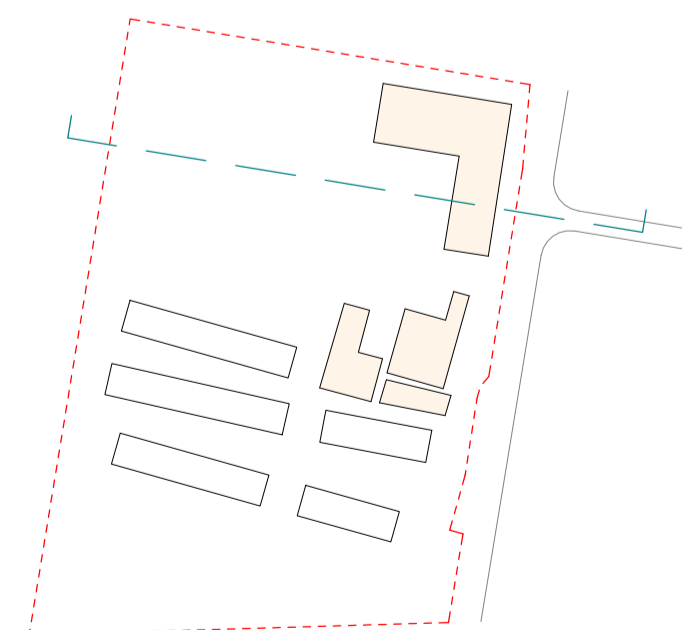
Revision
B



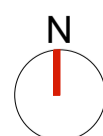
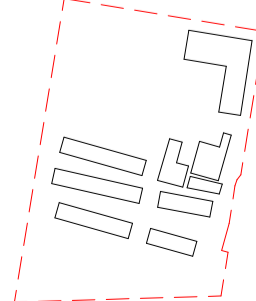
1 SECTION THROUGH THE SOUTHERN WING
1 : 500 @A1



2 SECTION THROUGH ROAD AND THE SOUTHERN WING
1 : 200 @A1



Key Plan:



Drawing Disclaimer:
Do not scale from drawings.
Verify all dimensions on site before commencing work.
Copying or reproduction of this drawing is strictly prohibited without the consent of PTW Architects

Note
PTW takes no responsibility for external building elements. Anything connected with any design, materials selection, construction or installation of any cladding, facade or external building element must be checked by and remains the responsibility of others, including suitably qualified experts as may be required.

Rev	Amendment	By	Chk*	Date
B	SSDA SUBMISSION	MB	DJ	211008
A	DRAFT SSDA SUBMISSION	MB	DJ	210924

*Registered Architect
DHJ Diane H Jones NSW Arch 4778

Consultants

Client



Education

Architect
PTW Architects
Level 11, 88 Phillip Street
Sydney NSW 2000 Australia
T +61 2 9232 5877
ptw.com.au

Peddie Thorp & Walker P/L
ABN 23 000 454 624
trading as PTW Architects

NSW Nominated Architects
S Parsons Architect No 6098
D Jones Architect No 4778



As indicated
Project PA030470

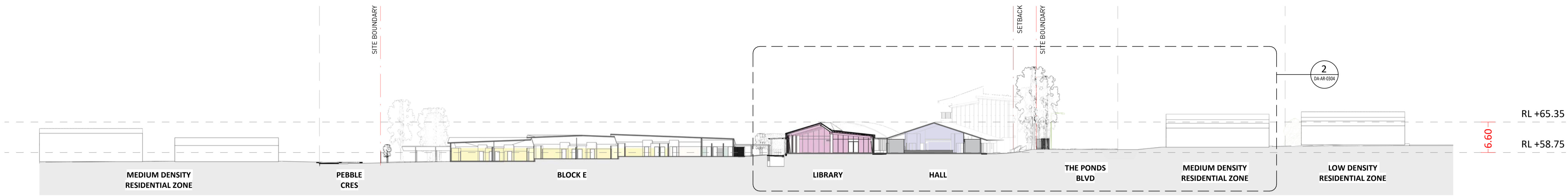
John Palmer Public School
85 The Ponds Blvd, The Ponds NSW 2769

Status
SSDA SUBMISSION

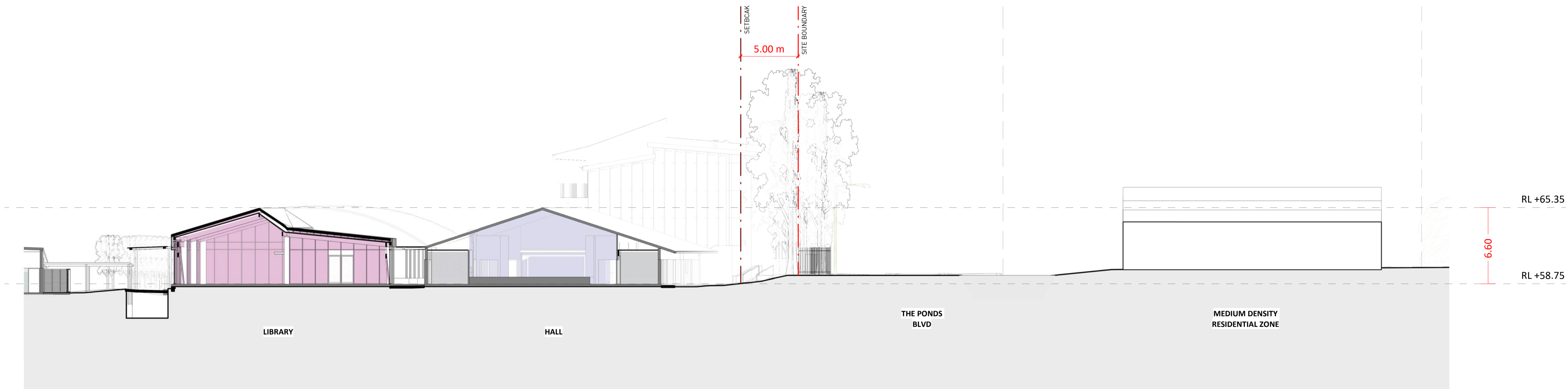
Title
SSDA
SITE SECTIONS

Drawing Number
DA-AR-0303

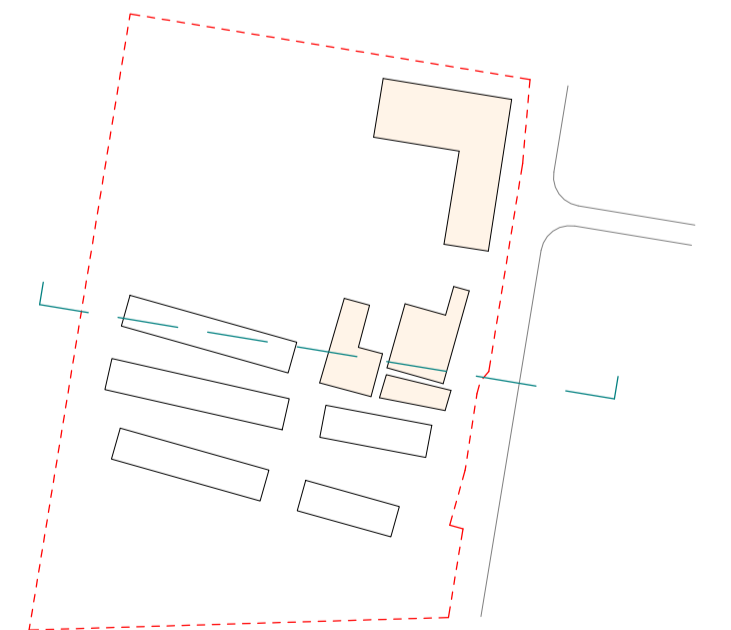
Revision
B



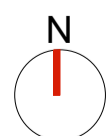
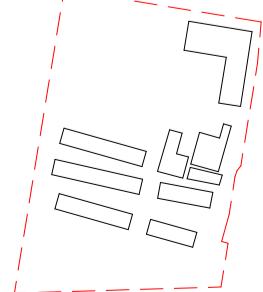
1 SECTION THROUGH THE LIBRARY AND HALL
1 : 500 @A1



2 SECTION THROUGH ROAD AND THE LIBRARY
1 : 200 @A1



Key Plan:



Drawing Disclaimer:
Do not scale from drawings.
Verify all dimensions on site before commencing work.
Copying or reproduction of this drawing is strictly prohibited without the consent of PTW Architects

Note
PTW takes no responsibility for external building elements. Anything connected with any design, materials selection, construction or installation of any cladding, facade or external building element must be checked by and remains the responsibility of others, including suitably qualified experts as may be required.

Rev	Amendment	By	Chk*	Date
B	SSDA SUBMISSION	MB	DJ	211008
A	DRAFT SSDA SUBMISSION	MB	DJ	210924

*Registered Architect		
DHJ	Diane H Jones	NSW Arch 4778

Consultants

Client



Education

Architect
PTW Architects
Level 11, 88 Phillip Street
Sydney NSW 2000 Australia
T +61 2 9232 5877
ptw.com.au

Peddie Thorp & Walker P/L
ABN 23 000 454 624
trading as PTW Architects

NSW Nominated Architects
S Parsons Architect No.6098
D Jones Architect No.4778



As indicated
Project PA030470

John Palmer Public School
85 The Ponds Blvd, The Ponds NSW 2769

Status
SSDA SUBMISSION

Title
SSDA
SITE SECTIONS

Drawing Number
DA-AR-0304

Revision
B