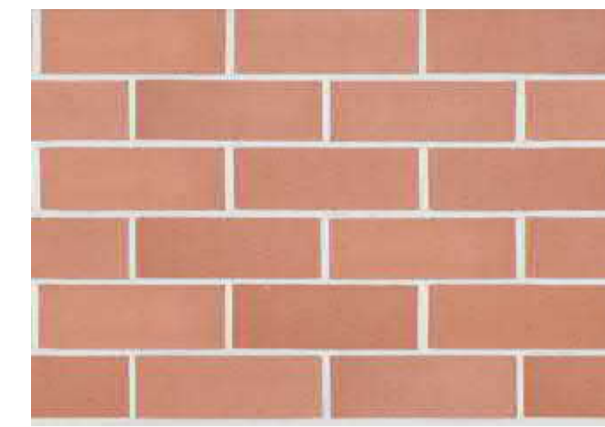


New building - HB and Hall extension



BRK-101

Austral Brick  
Smooth face brick  
*Symmetry 'Terracotta'*



BRK-102  
BRK-103 - SOLDIER COURSE

Austral Brick  
Smooth face brick  
*La Paloma 'Miro'*



BRK-106 - COLOURS TBC -SOLDIER COURSE

Austral Brick  
White Glazed Brick  
Colours to be selected



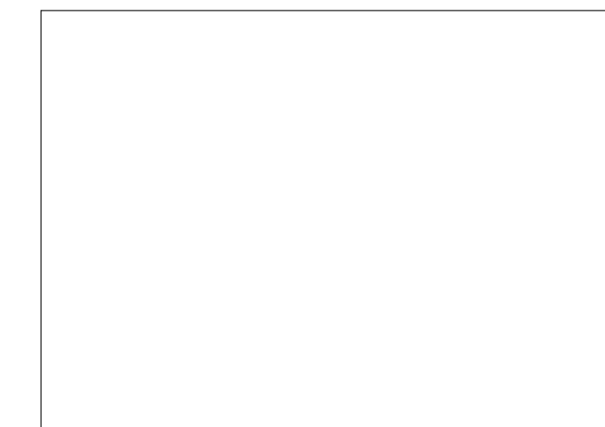
BRK-105

Austral Brick  
Glazed Brick  
Royal



ERG-401

Glazed Tile  
For core walls  
Colours to be selected  
for mural pattern



EWS-101  
Universal Anodisers  
Anodised aluminium frame  
Clear finish



CLG-301 CLG-302  
Dominion and SnapSeam  
for Soffit Linings  
(Standing Seam)  
Colour TBC



RWS-201  
Galvanised steel water pipe  
and brackets with colorbond  
steel down pipe transitions  
from gutter



GLS-101  
Viridian Comfort Plus:  
Laminated Glass with  
Low E Coating, Neutral 59



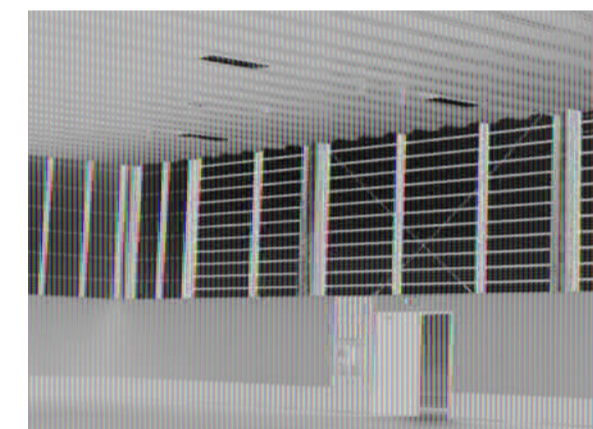
GLS-103  
Viridian VTough:  
Toughened Glass with  
Low E Coating, Neutral 59



SCN-101  
Arcadia  
Match Sun-Shading  
*'Arcadia Match Sun-Shading  
Grating Panels'*



SCN-102  
Arcadia  
Louvres Aluminium Extruded  
box section aluminium  
Colours to be confirmed



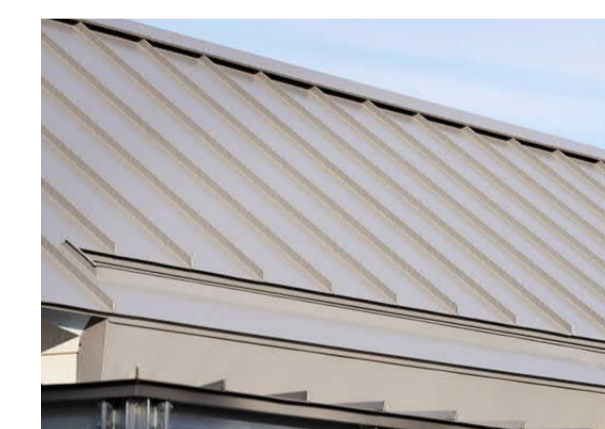
SCN-102  
Coolite  
Fixed metal louvre  
in framing system



GLS-102  
Viridian Comfort Plus: Laminated  
Glass with Low E Coating, Trans-  
lucent



EWS-102  
Acoustic Louvres,  
Clear Anodised Finish



RFS-101  
RWS-101  
Lysaght  
Longline 305 for roof  
*Colorbond Matt 'Basalt'*



BAL-101  
Aluminium slat balustrade  
panels with galvanised steel  
framing

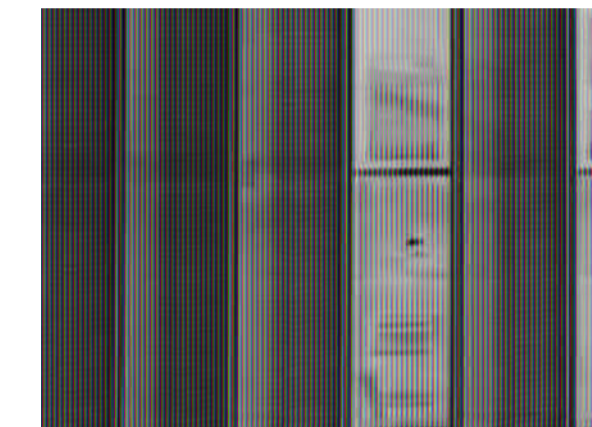


ELG-101 ELG-103  
Dominion and SnapSeam panels for wall framing and  
panelling  
*Colorbond Matt 'Basalt'*  
*Colorbond Matt 'Dune'*  
*Colorbond Matt 'Surfmist'*

New building - HB



Aboriginal weaving  
'Scoops' by Julie-Ann Christian  
Inspiration for modelled perforated  
metal screens



SCN-201  
SCN-202  
Arcadia: Profiled, Perforated  
Metal Screens and Support System,  
Colours to be confirmed



CON-101  
Concrete framing  
Keim finish for longevity and quality

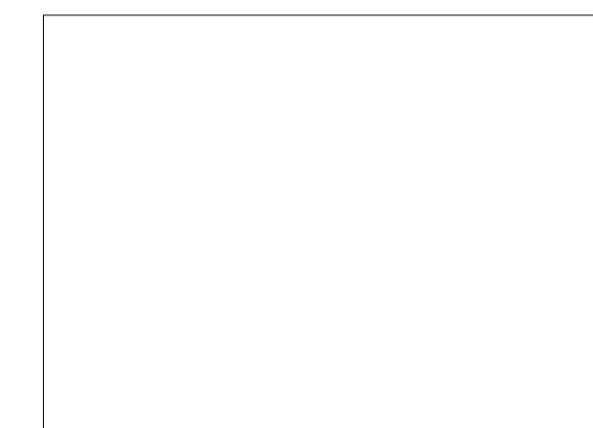


PAV-101  
Concrete /porcelain tiles on  
pedestals for access  
balconies

Library



GLT Frame  
Glue Laminated Timber  
(GLT)for internal framing



SCN-203  
Arcadia: Profiled, Perforated Metal  
Screens and Support System,  
Colours to be confirmed (Library)

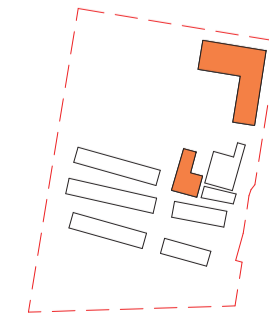


AMW-201  
Galvanised steel round  
columns with carved  
stone base for  
courtyard walkway



JNF-301

Key Plan:



**Drawing Disclaimer:**  
Do not scale from drawings.  
Verify all dimensions on site before commencing work.  
Copying or reproduction of this drawing is strictly  
prohibited without the consent of PTW Architects

**Note**  
PTW takes no responsibility for external building  
elements. Anything connected with any design, materials  
selection, construction or installation of any cladding,  
facade or external building element must be checked by  
and remains the responsibility of others, including  
suitably qualified experts as may be required.

Rev	Amendment	By	Chk*	Date
B	SSDA SUBMISSION	MB	DJ	21/10/08
A	DRAFT SSDA SUBMISSION	MB	DJ	21/09/24

*Registered Architect		
DHJ	Diane H Jones	NSW Arch 4778

Consultants		Client	
		NSW GOVERNMENT	
		Education	

**Architect**  
PTW Architects  
Level 11, 88 Phillip Street  
Sydney NSW 2000 Australia  
T +61 2 9232 5877  
[ptw.com.au](http://ptw.com.au)

Peddie Thorp & Walker P/L  
ABN 23 000 454 624  
trading as PTW Architects

NSW Nominated Architects  
S Parsons Architect No.6098  
D Jones Architect No.4778

Project PA030470

**John Palmer Public School**  
85 The Ponds Blvd, The Ponds NSW 2769

Status  
SSDA SUBMISSION

Title  
SSDA  
**MATERIALS BOARD**

Drawing Number  
**DA-AR-0501**

Revision  
**B**