

# Modification of Development Consent

## Section 4.55(1A) of the *Environmental Planning and Assessment Act 1979*

As delegate of the Minister for Planning under delegation executed on 9 March 2022, I approve the modification of the development consent referred to in Schedule 1, subject to the conditions outlined in Schedule 2.



Pamela Morales  
**A/Team Leader**  
**Industry Assessments**

Sydney

14 July 2022

File: EF22/6838

### SCHEDULE 1

#### Development Consent

**Development consent:** SSD-22191322 granted by the Director, Industry Assessments on 29 October 2021

**For the following:** Oakdale West Estate Stage 5 Development including construction, subdivision, fit out, operation and use of warehouse building 4E, associated office space, internal roads and parking

#### Modification 1

**Modification Application:** Amendment to Building 4E elevations and removal of Condition B28

**Applicant:** Goodman Property Services (Aust) Pty Ltd

**Consent Authority:** Minister for Planning

**The Land:** 2 Aldington Road, Kemps Creek NSW 2178  
Lot 111 DP 1262310

### SCHEDULE 2

The consent is modified as follows:

1. Insert the following definitions in alphabetical order:

**Modification Assessments**

The document assessing the environmental impact of a proposed modification of this consent and any other information submitted with the following modification applications made under the EP&A Act:

- a) SSD-22191322-Mod-1, accompanied by 'Oakdale West Stage 5 – Application to Remove Condition B28, dated 23 May 2022, prepared by Goodman Property Services (Aust) Pty Ltd

**In Schedule 2: Part A Administrative Conditions**

2. In Condition A2, re-number sub-clauses (d) and (e) to (e) and (f), respectively.
3. In Condition A2, insert new sub-clause (d) immediately after sub-clause (c) as follows:  
  
(d) Modification Assessments;
4. In Condition A4, delete “A2(e)” where occurring and replace with “A2(f)”.

**In Schedule 2: Part B Specific Environmental Conditions**

5. Delete Condition B28 and the subheading ‘Fire Safety’.

**In the Appendices**

6. In Appendix 1 – Development Plans, delete Figure 2 and insert new Figure 2 as shown in Attachment A of this modifying instrument.

## Attachment A: Plans

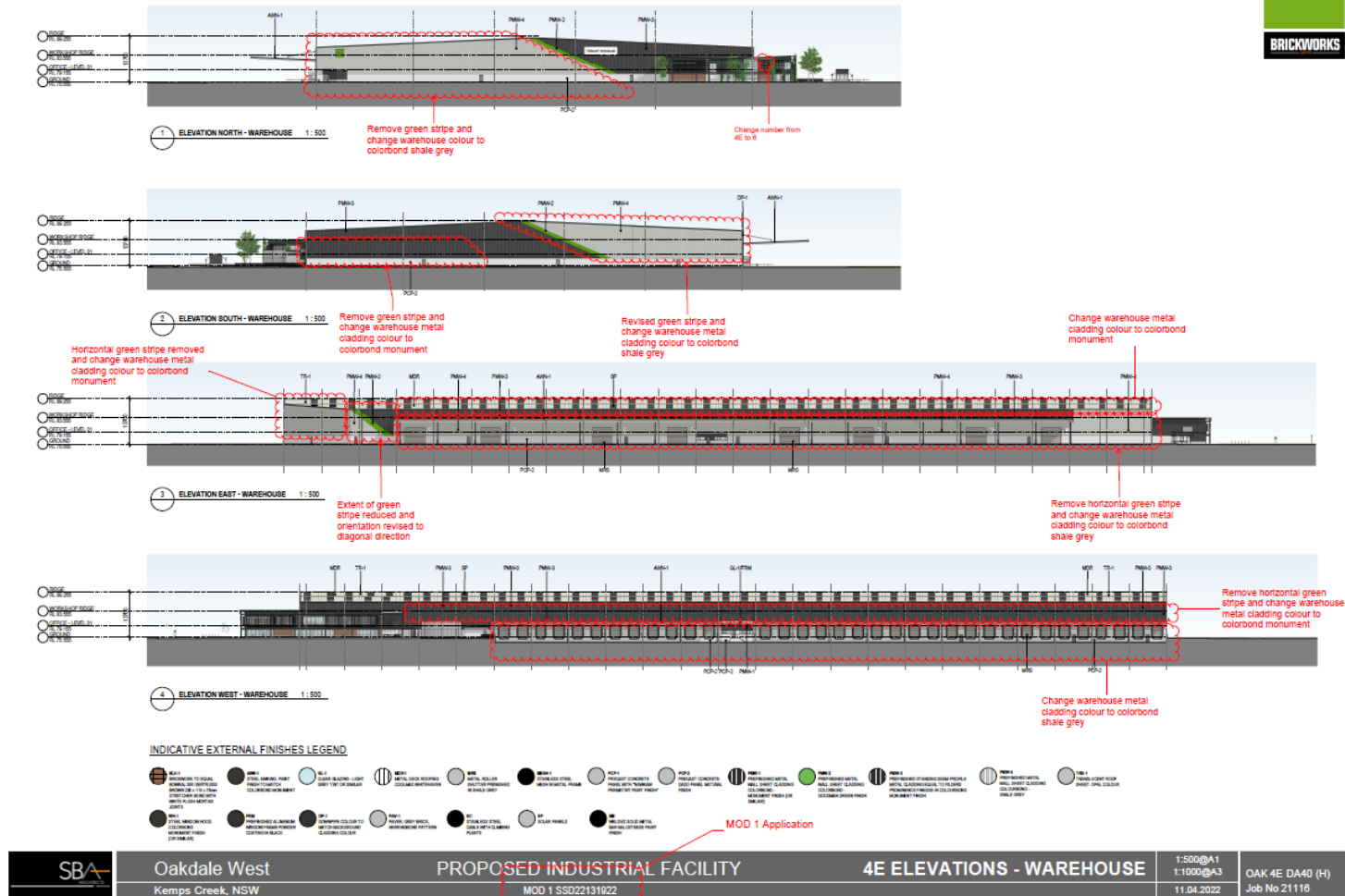


Figure 2: Warehouse Elevations

**End of modification**  
**(SSD-22191322-Mod-1)**