

Rev#	Date	Draft	Review	Revision note
11	28 JUN 2022	LH	VG/EH	DA/EIS DETAIL AMENDMENTS
12	13 JUL 2022	LH	VG/EH	DA/EIS RFI

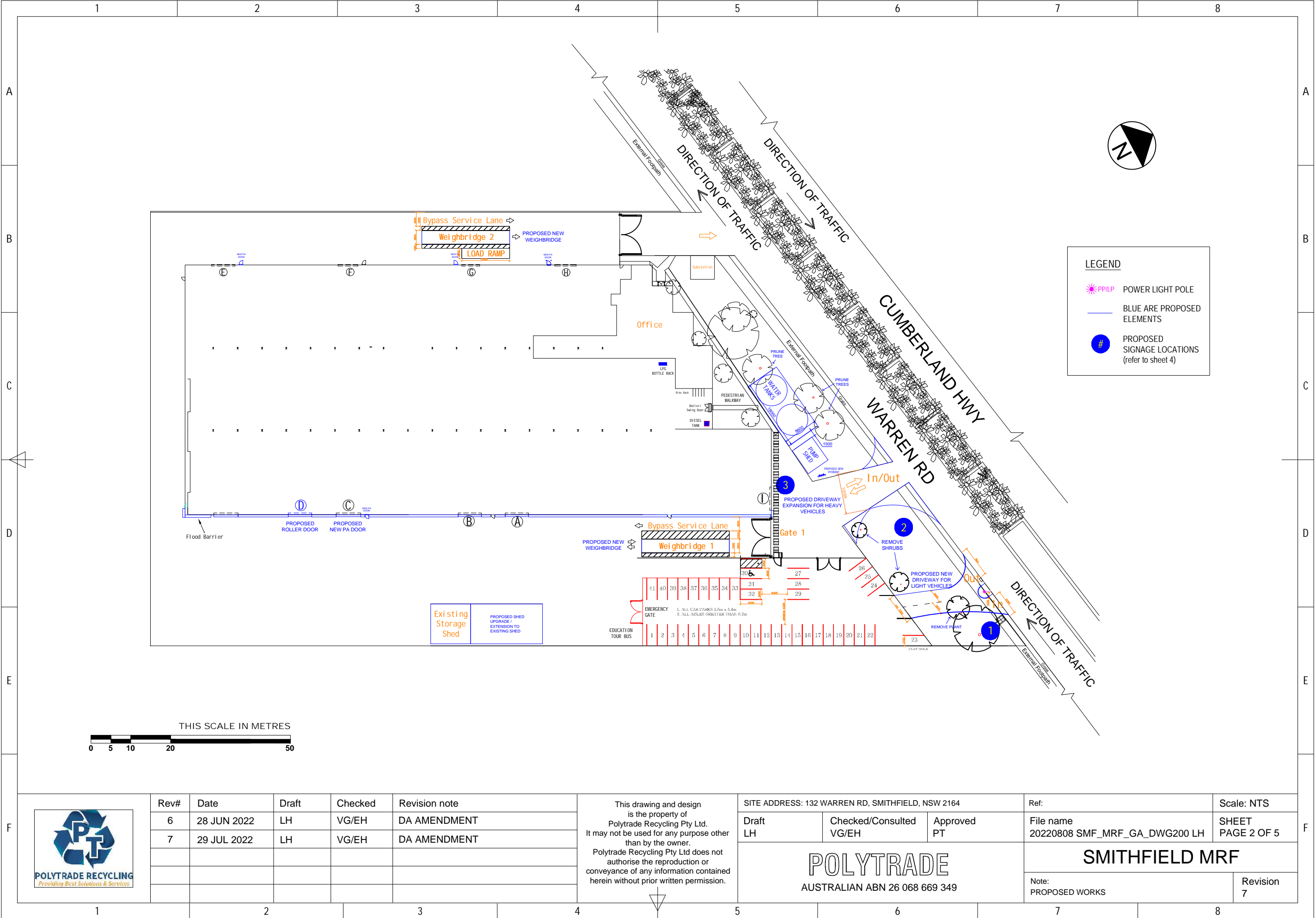
This drawing and design is the property of Polytrade Recycling Pty Ltd. It may not be used for any purpose other than by the owner. Polytrade Recycling Pty Ltd does not authorise the reproduction or conveyance of any information contained herein without prior written permission.

SITE ADDRESS: 132 WARREN RD, SMITHFIELD, NSW 2164

Draft LH	Review VG/EH	Approved PT
-------------	-----------------	----------------

POLYTRADE  
AUSTRALIAN ABN 26 068 669 349

Ref:	Scale: NTS
File name 20220808 SMF_MRF_GA_DWG200 LH	SHEET PAGE 1 OF 5
SMITHFIELD MRF	
Note: SITE OVERVIEW	Revision 12

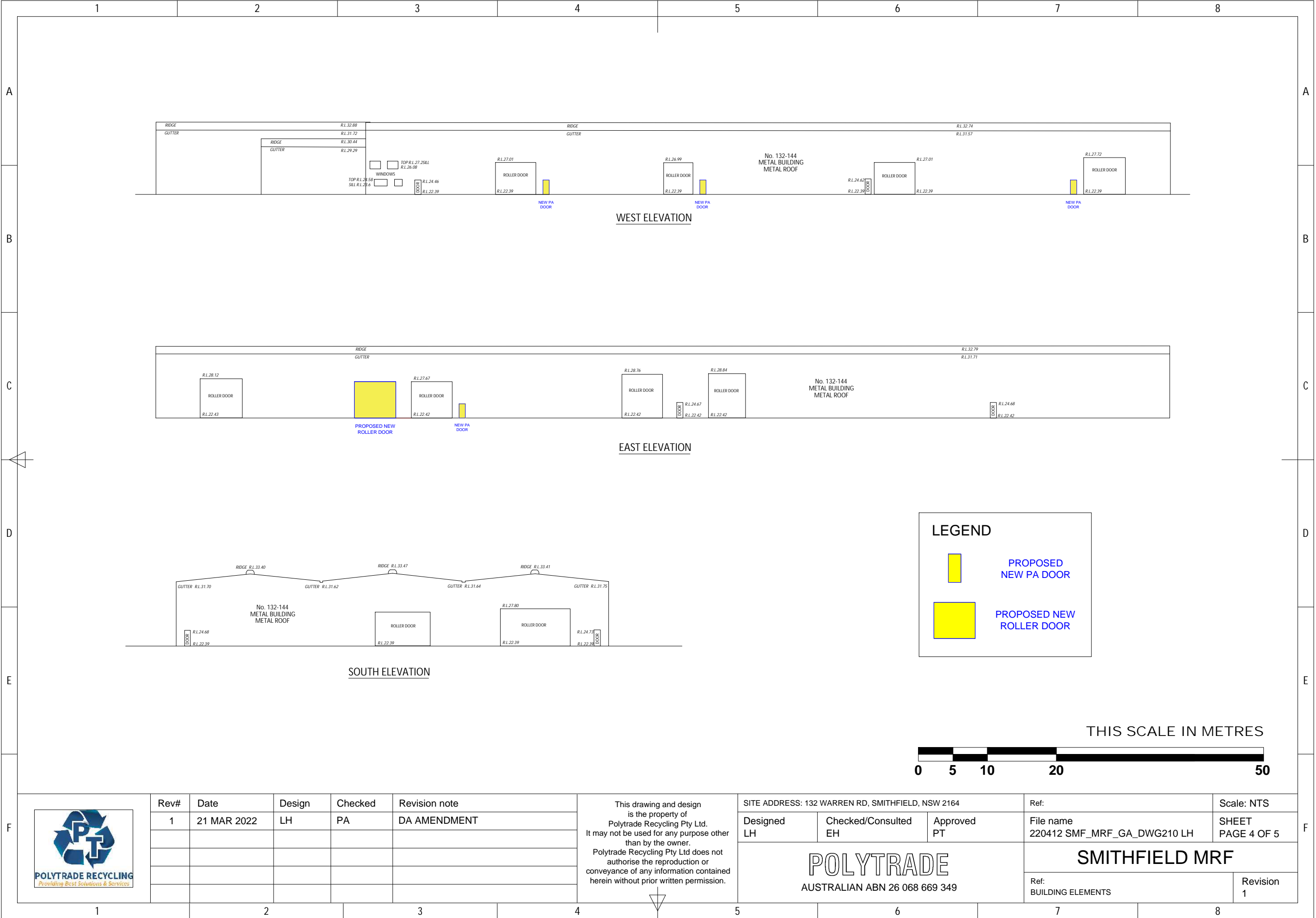


Rev#	Date	Draft	Checked	Revision note
6	28 JUN 2022	LH	VG/EH	DA AMENDMENT
7	29 JUL 2022	LH	VG/EH	DA AMENDMENT

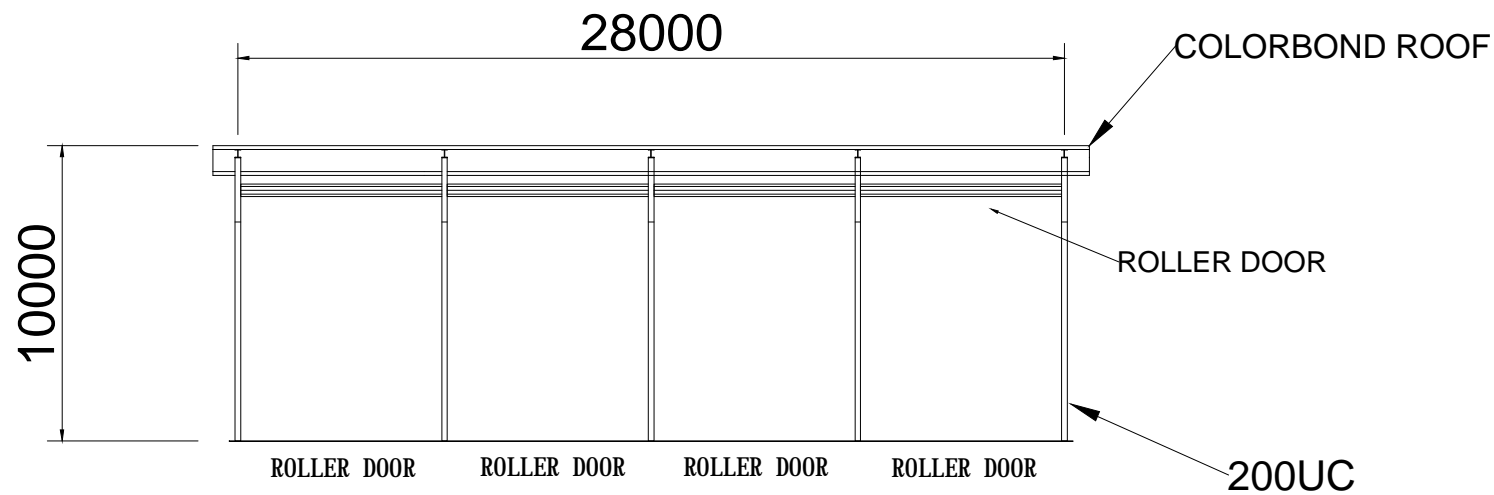
This drawing and design is the property of Polytrade Recycling Pty Ltd. It may not be used for any purpose other than by the owner. Polytrade Recycling Pty Ltd does not authorise the reproduction or conveyance of any information contained herein without prior written permission.

SITE ADDRESS: 132 WARREN RD, SMITHFIELD, NSW 2164			Ref:	Scale: NTS
Draft LH	Checked/Consulted VG/EH	Approved PT	File name 20220808 SMF_MRF_GA_DWG200 LH	SHEET PAGE 2 OF 5
<b>POLYTRADE</b> AUSTRALIAN ABN 26 068 669 349			<b>SMITHFIELD MRF</b>	
			Note: PROPOSED WORKS	Revision 7

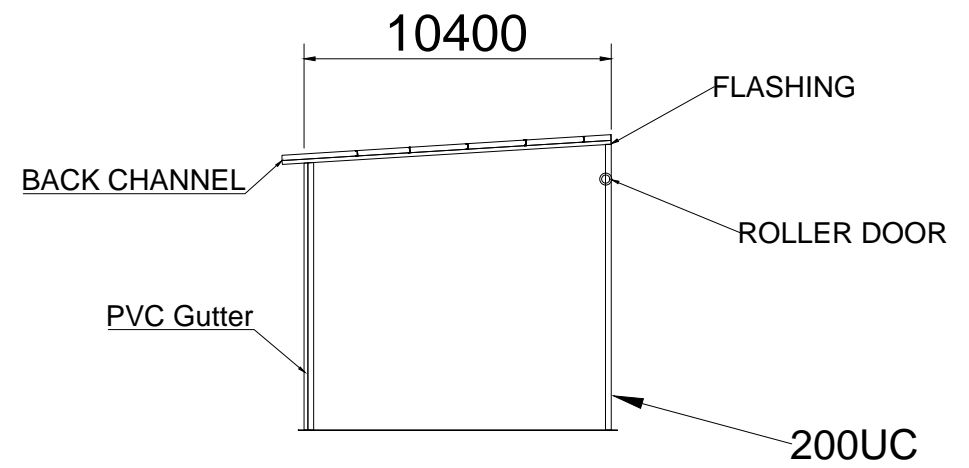




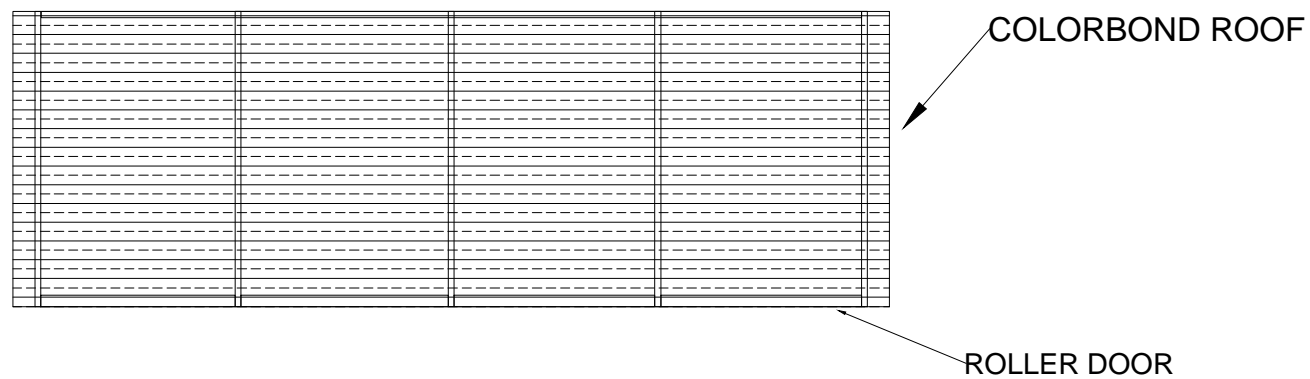




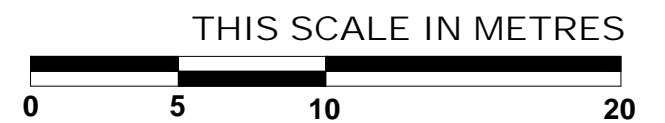
FRONT VIEW



SIDE VIEW



TOP VIEW



Rev#	Date	Draft	Checked	Revision note
1	21 MAR 2022	LH	PA	DA AMENDMENT
2	05 APR 2022	LH	EH	TEXT ADJUSTMENT

This drawing and design is the property of Polytrade Recycling Pty Ltd. It may not be used for any purpose other than by the owner. Polytrade Recycling Pty Ltd does not authorise the reproduction or conveyance of any information contained herein without prior written permission.

SITE ADDRESS: 132 WARREN RD, SMITHFIELD, NSW 2164

Draft LH	Checked EH	Approved PT
-------------	---------------	----------------

Ref:

File name  
220412 SMF\_MRF\_GA\_DWG210 LH

Scale: NTS

SHEET  
PAGE 5 OF 5

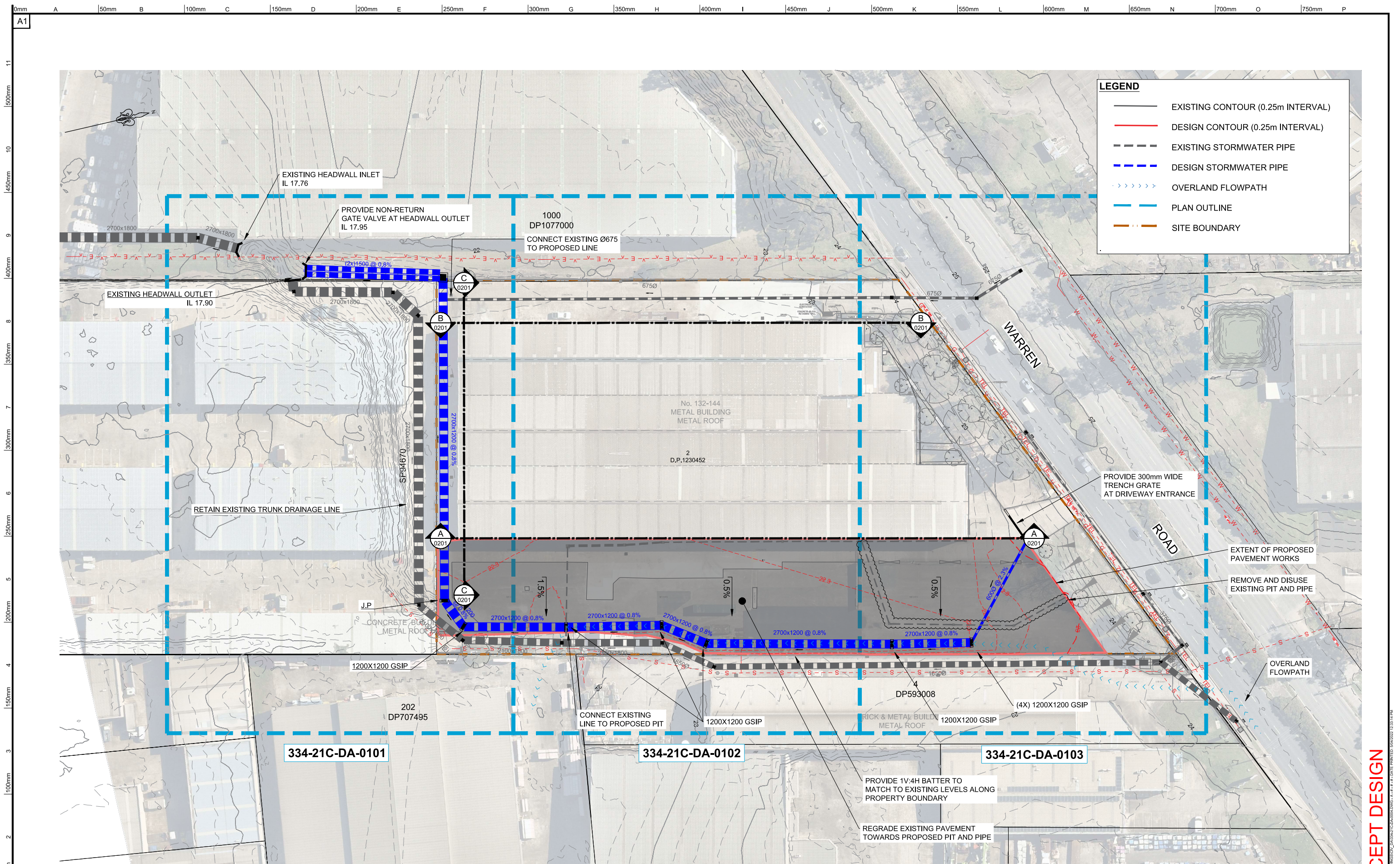
**POLYTRADE**  
AUSTRALIAN ABN 26 068 669 349

**SMITHFIELD MRF**

Ref:  
PROPOSED EXTERNAL SHED UPGRADE

Revision  
2











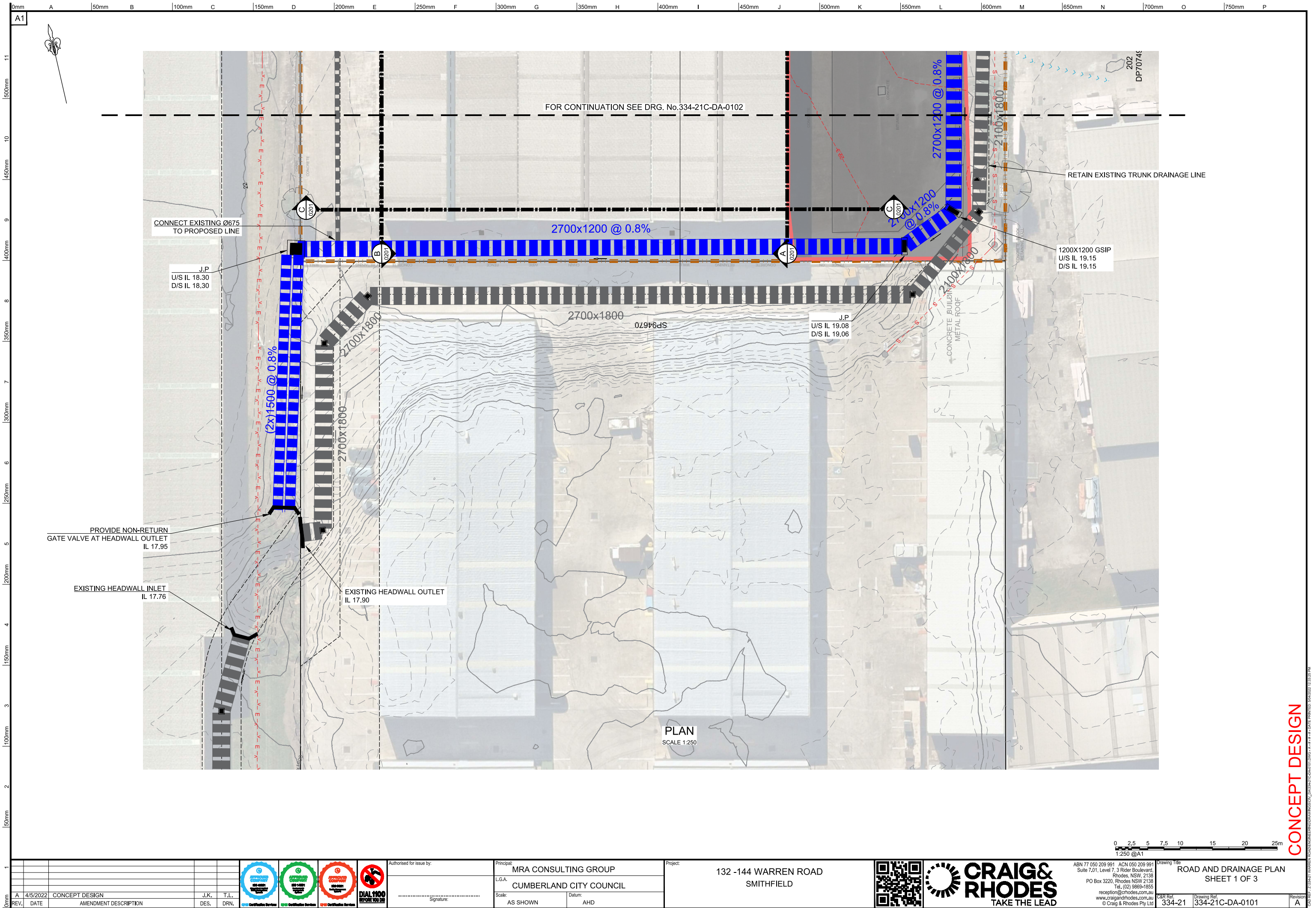
PLAN  
SCALE 1:XXXX



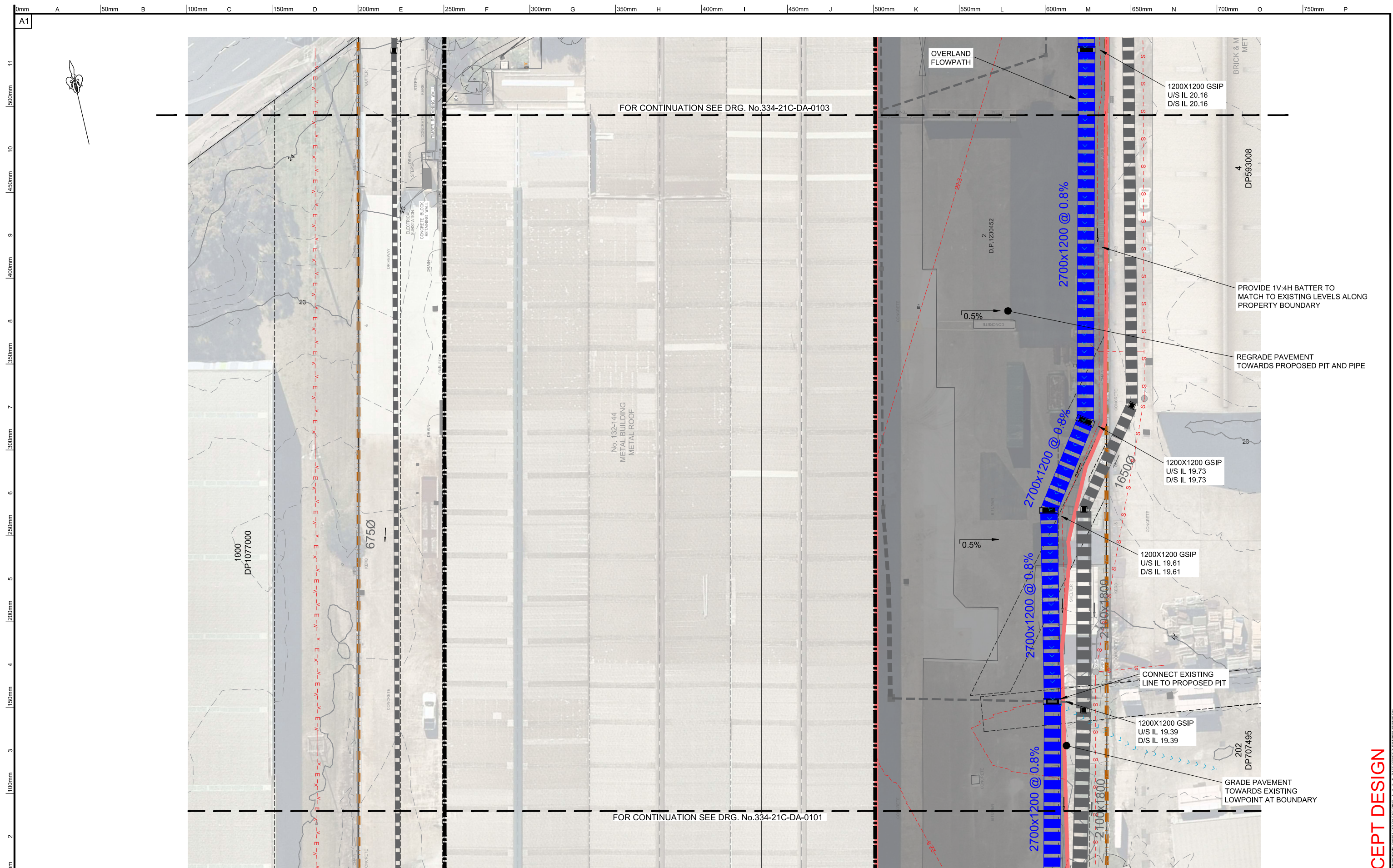
CONCEPT DESIGN

<div style="display: flex; justify-content: space-around;">     </div>	Authorised for issue by: _____ Signature		Principal: <b>MRA CONSULTING GROUP</b> L.G.A. <b>CUMBERLAND CITY COUNCIL</b>		Project: <b>132 -144 WARREN ROAD</b> <b>SMITHFIELD</b>				ABN 77 050 209 991 ACN 050 209 991 Suite 7.01, Level 7, 3 Rider Boulevard, Rhodes, NSW, 2138 PO Box 3220, Rhodes NSW 2138 Tel. (02) 9869-1855 <a href="mailto:reception@crhodes.com.au">reception@crhodes.com.au</a> <a href="http://www.craigandrhodes.com.au">www.craigandrhodes.com.au</a> © Craig & Rhodes Pty Ltd	Drawing Title <b>KEY PLAN</b>		C&R Ref. <b>334-21</b>	Drawing Ref. <b>334-21C-DA-0004</b>	Revision <b>A</b>
	REV. DATE A 4/5/2022 CONCEPT DESIGN AMENDMENT DESCRIPTION	DES. DRN. J.K. T.L.	Scale: AS SHOWN		Datum: AHD					Drawing Ref. <b>334-21C-DA-0004</b>				









## PLAN

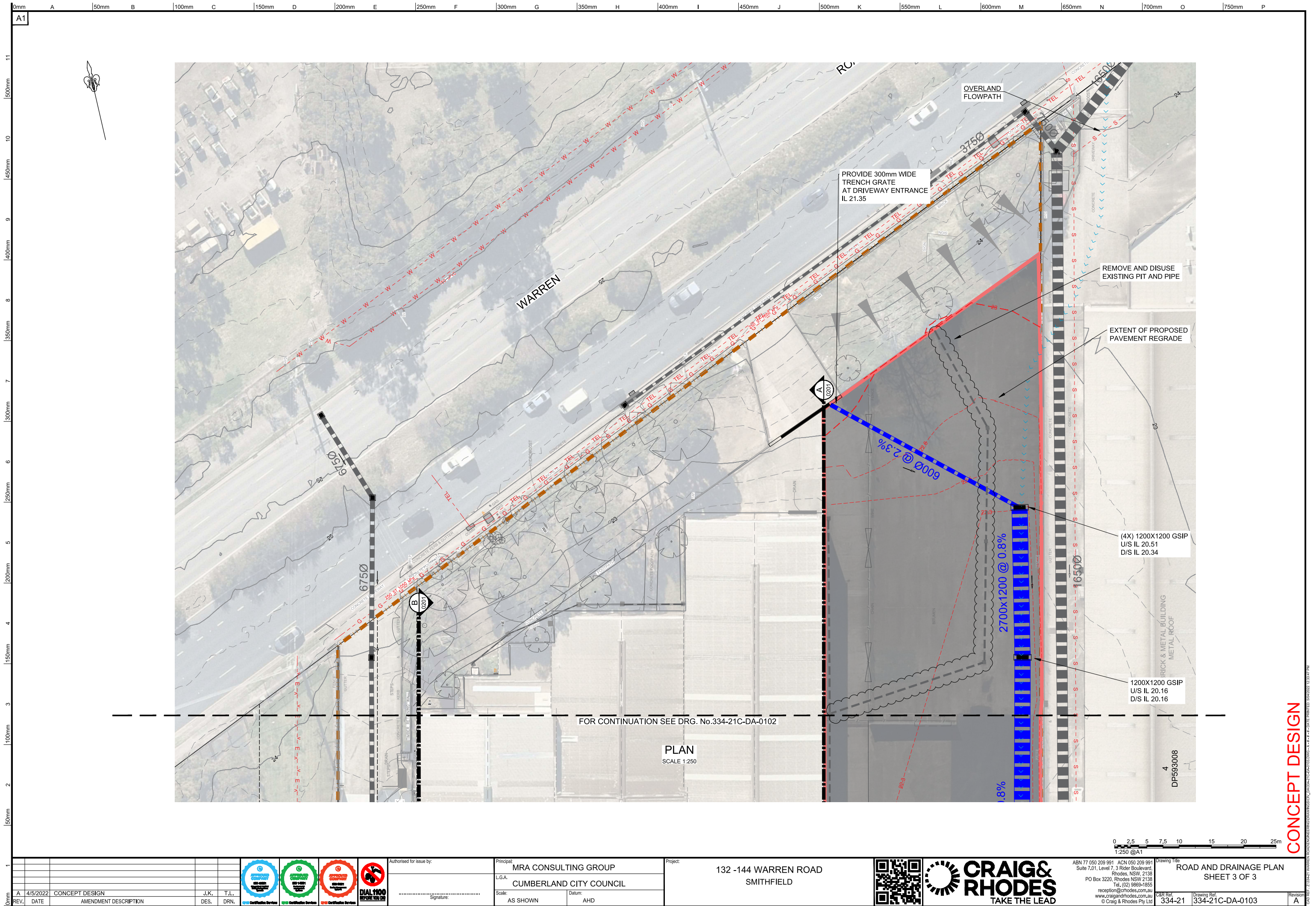
SCALE 1:250

[illegible]

# CONCEPT DESIGN

[illegible]





<div><div><div><div><div></div><div></div><div></div><div></div></div><div><div></div><div></div><div></div><div></div></div><div><div></div><div></div><div></div><div></div></div><div><div></div><div></div><div></div><div></div></div></div><div><div></div><div></div><div></div><div></div></div><div><div></div><div></div><div></div><div></div></div><div><div></div><div></div><div></div><div></div></div></div></div> <div>Authorised for issue by:</div> <div>Principal: MRA CONSULTING GROUP</div> <div>Project: 132 -144 WARREN ROAD SMITHFIELD</div>				<div><div><div></div><div></div><div></div><div></div></div><div><div></div><div></div><div></div><div></div></div><div><div></div><div></div><div></div><div></div></div><div><div></div><div></div><div></div><div></div></div></div> <div><div></div><div></div><div></div><div></div></div> <div><div></div><div></div><div></div><div></div></div> <div><div></div><div></div><div></div><div></div></div>
---	--	--	--	---

L.G.A.:  
CUMBERLAND CITY COUNCILScale:  
AS SHOWNDatum:  
AHD



