



For legend details, please refer to the Coversheet attachment provided as part of this DBYD response.



Scale:1:2000

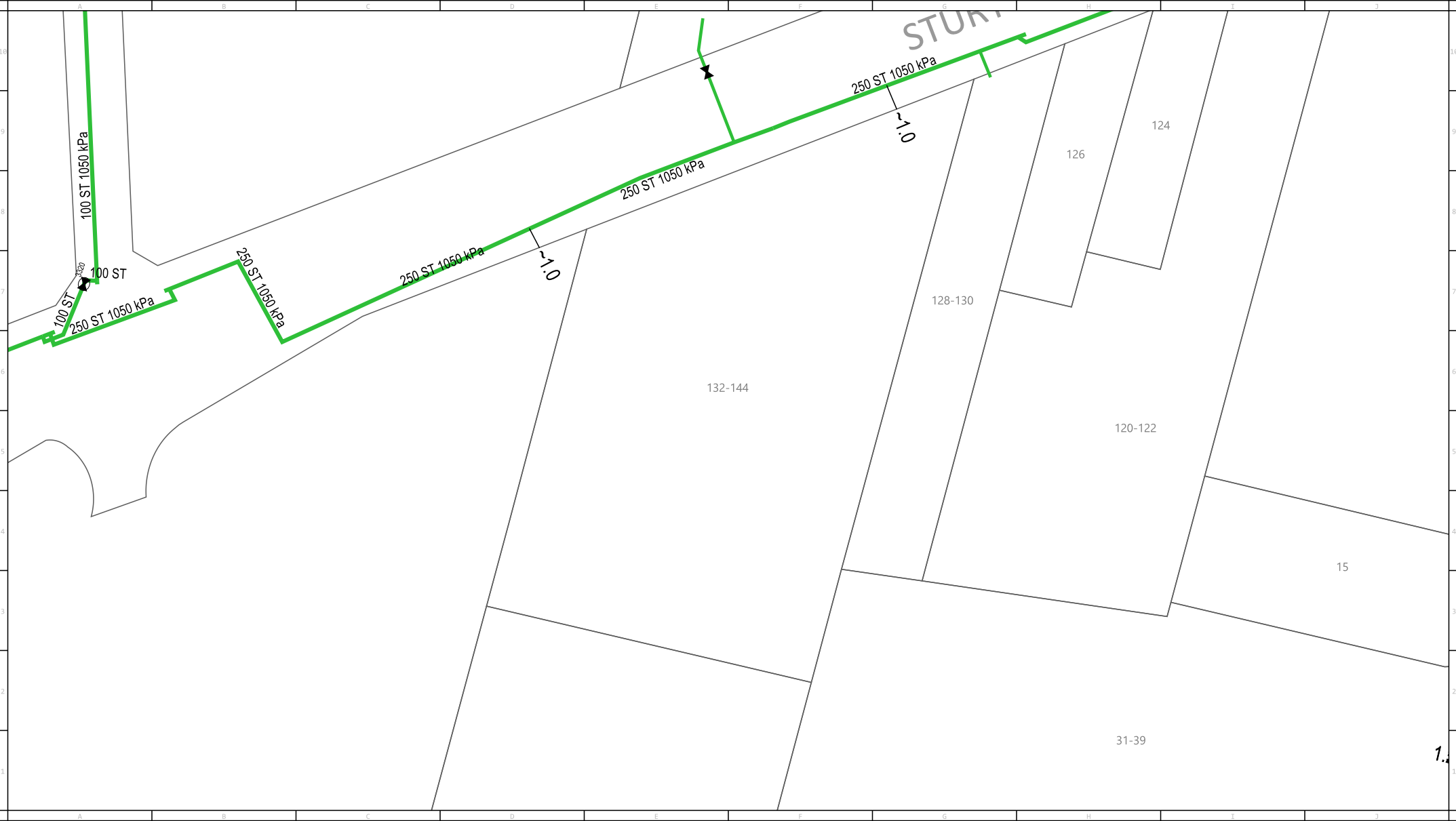
Issue Date: 13/04/2021

DBYD Seq No: 108591663

DBYD Job No: 21428096

0m 10m 20m 30m 40m 50m 60m 70m 80m

WARNING:This is a representation of Jemena Gas Networks underground assets only and may not indicate all assets in the area. It must not be used for the purpose of exact asset location in order to undertake any type of excavation. This plan is diagrammatic only, and distances scaled from this plan may not be accurate. Please read all conditions and information on the attached information sheet. This extract is subject to those conditions. The information contained on this plan is only valid for 28 days from the date of issue.



For legend details, please refer to the Coversheet attachment provided as part of this DBYD response.



Scale:1:2000

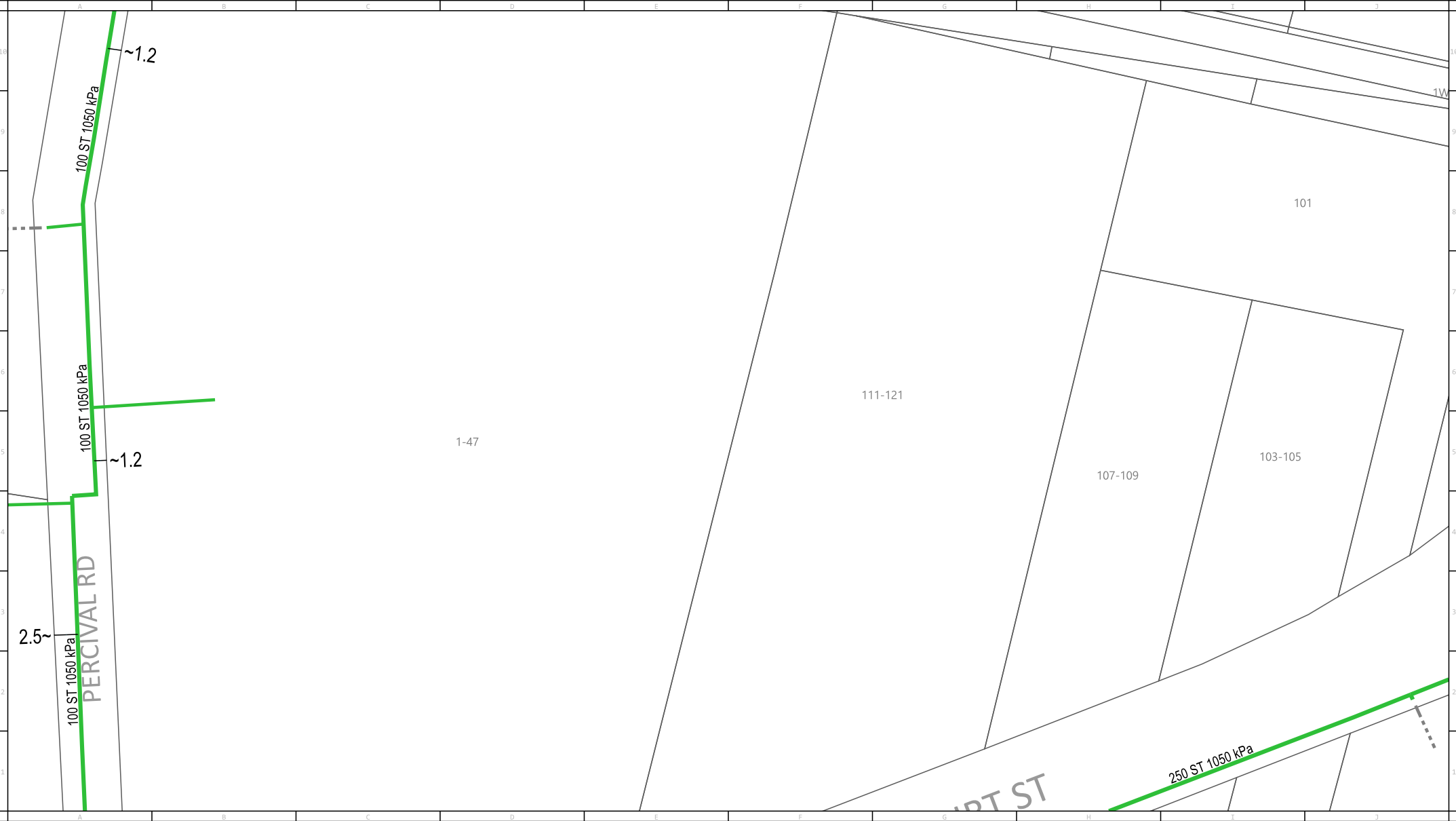
Issue Date: 13/04/2021

DBYD Seq No: 108591663

DBYD Job No: 21428096

0m 10m 20m 30m 40m 50m 60m 70m 80m

WARNING:This is a representation of Jemena Gas Networks underground assets only and may not indicate all assets in the area. It must not be used for the purpose of exact asset location in order to undertake any type of excavation. This plan is diagrammatic only, and distances scaled from this plan may not be accurate. Please read all conditions and information on the attached information sheet. This extract is subject to those conditions. The information contained on this plan is only valid for 28 days from the date of issue.



For legend details, please refer to the Coversheet attachment provided as part of this DBYD response.



Scale:1:2000

Issue Date: 13/04/2021

DBYD Seq No: 108591663


DBYD Job No: 21428096

0m 10m 20m 30m 40m 50m 60m 70m 80m

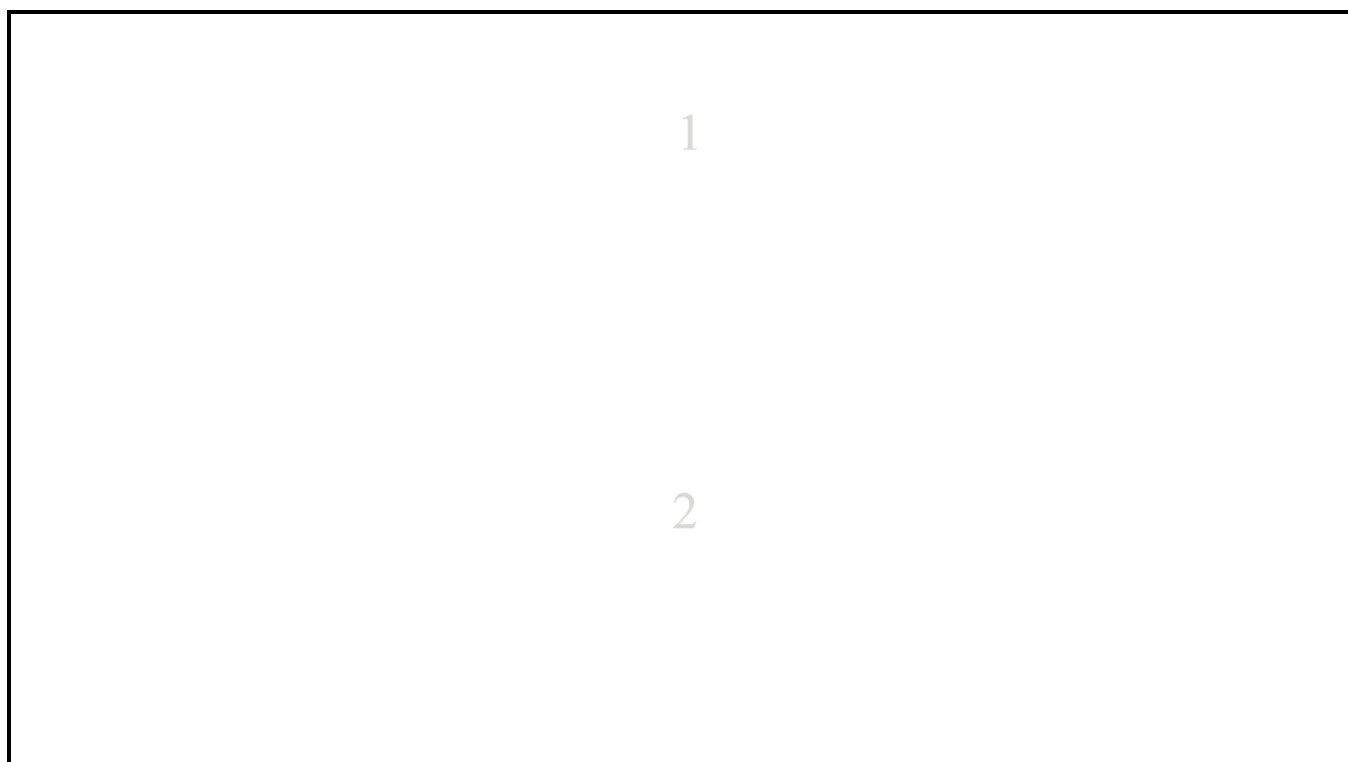
WARNING:This is a representation of Jemena Gas Networks underground assets only and may not indicate all assets in the area. It must not be used for the purpose of exact asset location in order to undertake any type of excavation. This plan is diagrammatic only, and distances scaled from this plan may not be accurate. Please read all conditions and information on the attached information sheet. This extract is subject to those conditions. The information contained on this plan is only valid for 28 days from the date of issue.



To: Ms Maya Deacock
Phone: Not Supplied
Fax: Not Supplied
Email: maya@mraconsulting.com.au

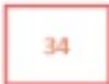




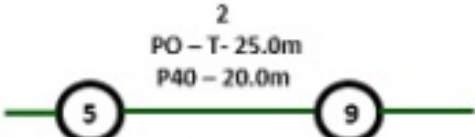
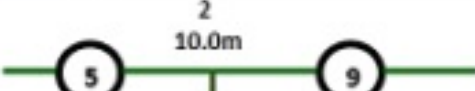





Dial before you dig Job #:	21428096	 DIAL BEFORE YOU DIG www.1100.com.au
Sequence #	108591667	
Issue Date:	13/04/2021	
Location:	Warren Road , Smithfield , NSW , 2164	

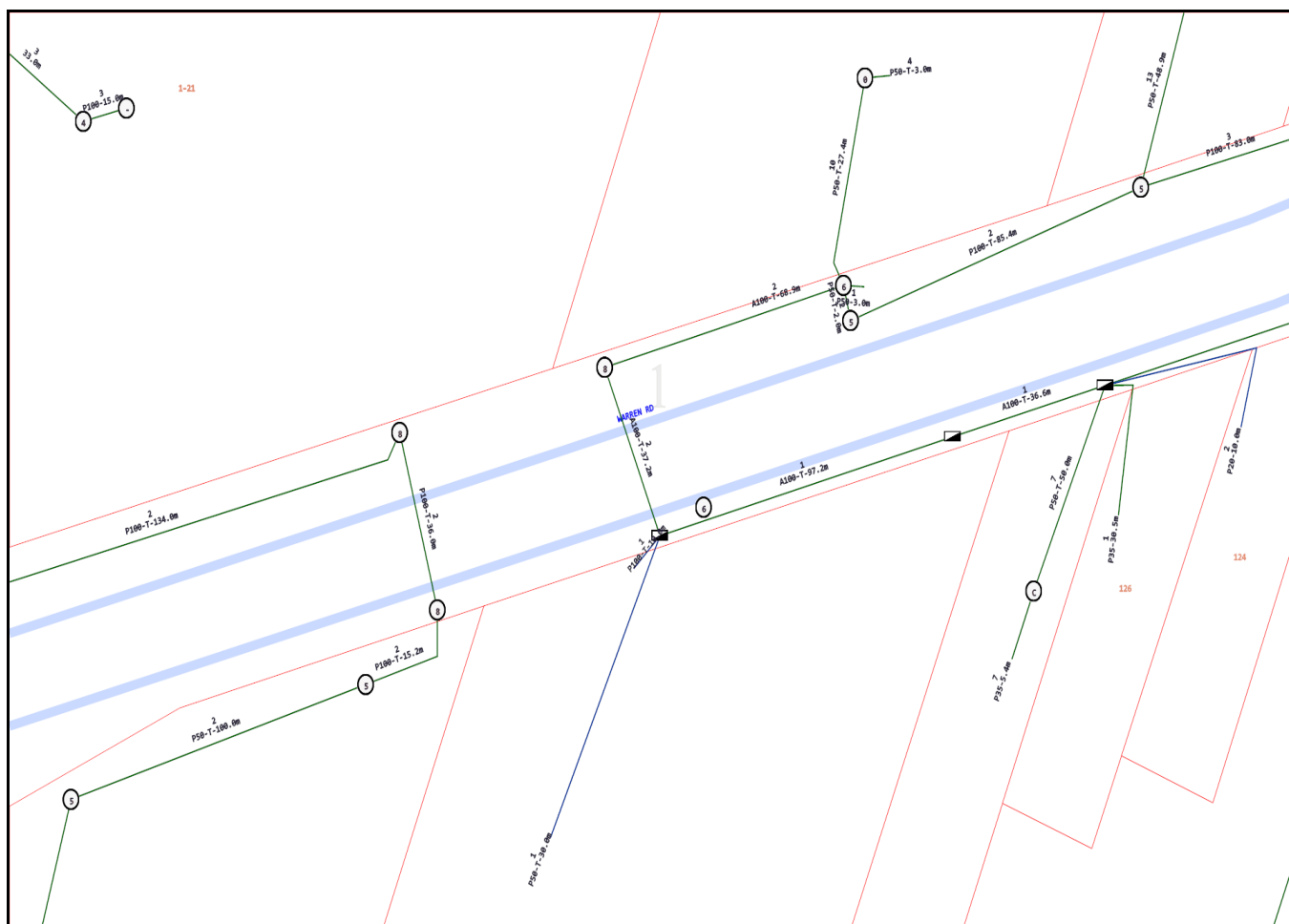
Indicative Plans

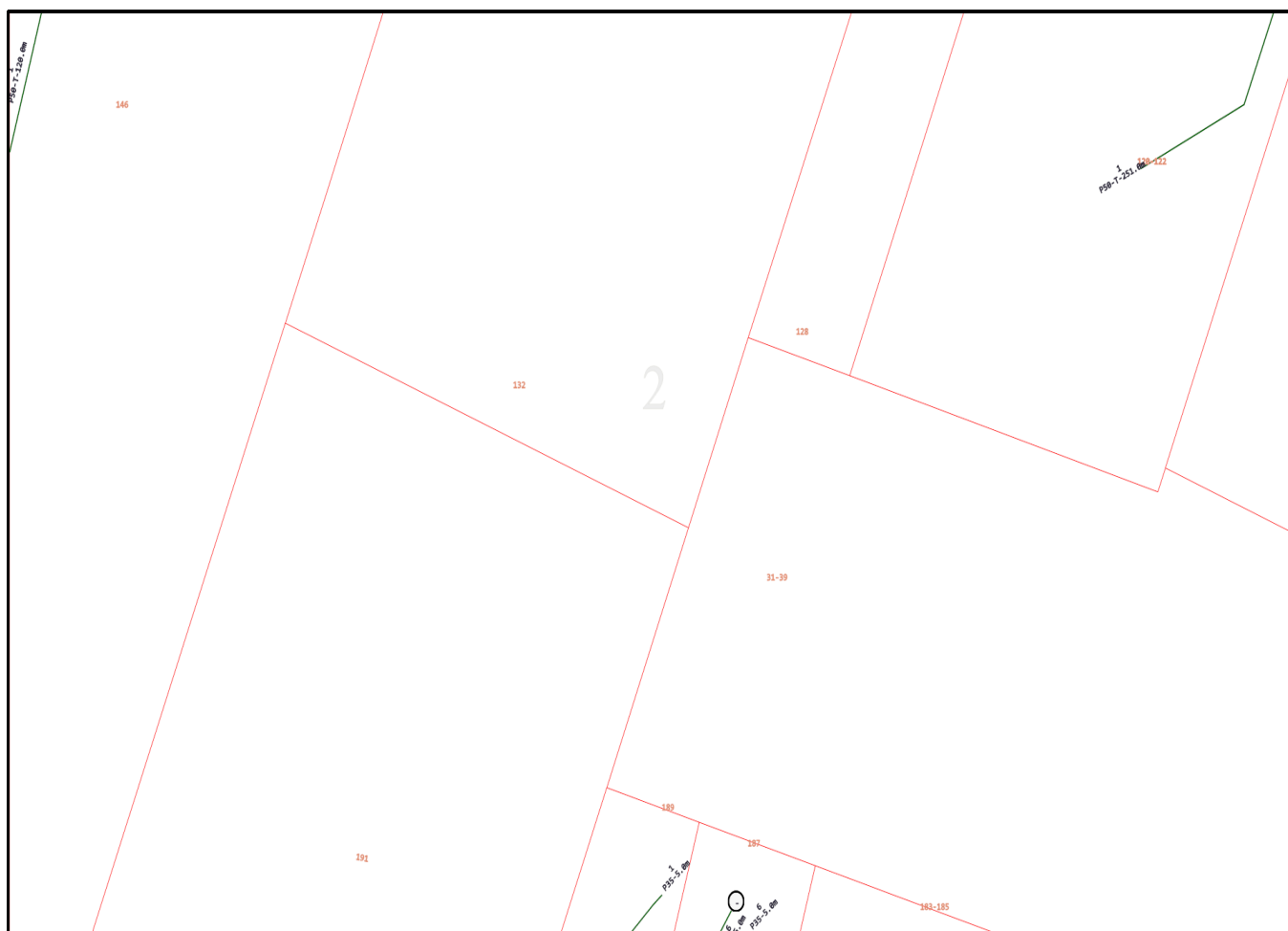




LEGEND

	Parcel and the location
	Pit with size "5"
	Power Pit with size "2E". Valid PIT Size: e.g. 2E, 5E, 6E, 8E, 9E, E, null.
	Manhole
	Pillar
	Cable count of trench is 2. One "Other size" PVC conduit (PO) owned by Telstra (-T-), between pits of sizes, "5" and "9" are 25.0m apart. One 40mm PVC conduit (P40) owned by NBN, between pits of sizes, "5" and "9" are 20.0m apart.
	2 Direct buried cables between pits of sizes, "5" and "9" are 10.0m apart.
	Trench containing any INSERVICE/CONSTRUCTED (Copper/RF/Fibre) cables.
	Trench containing only DESIGNED/PLANNED (Copper/RF/Fibre/Power) cables.
	Trench containing any INSERVICE/CONSTRUCTED (Power) cables.
	Road and the street name "Broadway ST"
Scale	0 20 40 60 Meters 1:2000 1 cm equals 20 m 





Emergency Contacts

You must immediately report any damage to the **nbn**TM network that you are/become aware of. Notification may be by telephone - 1800 626 329.



Date: 13/04/2021

Enquirer Name: Ms Maya Deacock
Enquirer Address: Suite 409 19 Roseby St
Email: maya@mraconsulting.com.au
Phone: 0498010634

Dear Ms Maya Deacock

The following is our response on behalf of each of the TPG carriers (listed below) to your Dial Before You Dig enquiry – Sequence 108591658. It is provided to you on a confidential basis under the following conditions and must be shredded or securely disposed of after use.

Assets Affected:

Carriers (each a "TPG carrier") and assets affected:

PIPE Networks

Location: Warren Road

According to our records, the underground assets in the vicinity of the location stated in your enquiry are **AFFECTED**. Please read the below information and disclaimers in addition to the any attached plans provided prior to any construction activities.

IMPORTANT INFORMATION

- The information provided is valid for 30 days from the date of this response. If your work site area changes or your construction activity is beyond 30 days please contact Dial Before You Dig on 1100 or www.1100.com.au to re-submit a new enquiry.
- Due to the nature of underground assets and the age of some assets and records, our plans are indicative of the general location only and may not show all assets in the location. You should not solely rely on these plans when undertaking construction works. It is also inaccurate to assume depth or that underground network conduit and cables follow straight lines, and careful on-site investigations are essential to locate an asset's exact position prior to excavation. It is your responsibility to locate and confirm the exact location of our infrastructure using non-destructive techniques. We make no warranty or guarantee that our plans are complete, current or error free, and to the maximum extent permitted by law we exclude all liability to you, your employees, agents and contractors for any loss, damage or claim arising out of or in connection with using our plans.
- Please note that some of our conduits carry electrical cables and gas pipes. Please exercise extreme care when working within the vicinity of these conduit and take into account the minimum clearance distances under Duty Of Care below.
- You (and your employee and contractors) must not open, move, interfere, alter or relocate any of our assets without our prior approval.
- **Note** It is a criminal offence under the *Criminal Code Act 1995 (Cth)* to tamper or interfere with communication facilities owned by a carrier. Heavy penalties may apply for breach of this prohibition, and any damages suffered, or costs incurred by us as a result of such unauthorised works may be claimed against you.

DAMAGE

- You must report immediately any damage to our network on **1800 786 306** (24hrs). We will hold you liable and seek compensation for any loss or damage to our network, our property and our customers that is caused by or arises out of your activities.

DUTY OF CARE

You have a duty of care to carefully locate, validate and protect our assets when carrying out works near our infrastructure. For construction activities that may impact on or interfere with our network, you will need to call us on **1800 786 306** to discuss a suitable engineering solution, lead time and cost involved. The below precautions must be taken when working in the vicinity of our network:

- Contact us on **1800 786 306** to discuss and obtain relevant information and plans on our infrastructure in a particular location if the information provided in this response is insufficient.
- Physically locate and mark on-site our network infrastructure using non-destructive techniques i.e. pot holing or hand digging every 5 metres prior to commencing any construction activities. Assets located must be marked to AS5488 standard. **NO CONSTRUCTION WORK IS ALLOWED UNTIL THIS STEP IS COMPLETED.** You must use an approved telecommunications accredited locator, or we can provide a locator for you at your expense. If we provide you with a locator, and this locator attended the site and is proven to be grossly negligent in physically locating and marking our infrastructure, then to the extent any TPG carrier is liable for this locator's negligence, acts and omissions, the total liability aggregated for all TPG carriers is limited, at our option, to attend the site and re-mark the infrastructure or to pay for a third party to re-mark the infrastructure.
- If you require us to locate or monitor our infrastructure, please allow five business days' notice for us to respond.
- Ensure all information, including our network requirements and any associated plans provided by us are kept confidential and remain on-site throughout your construction works.

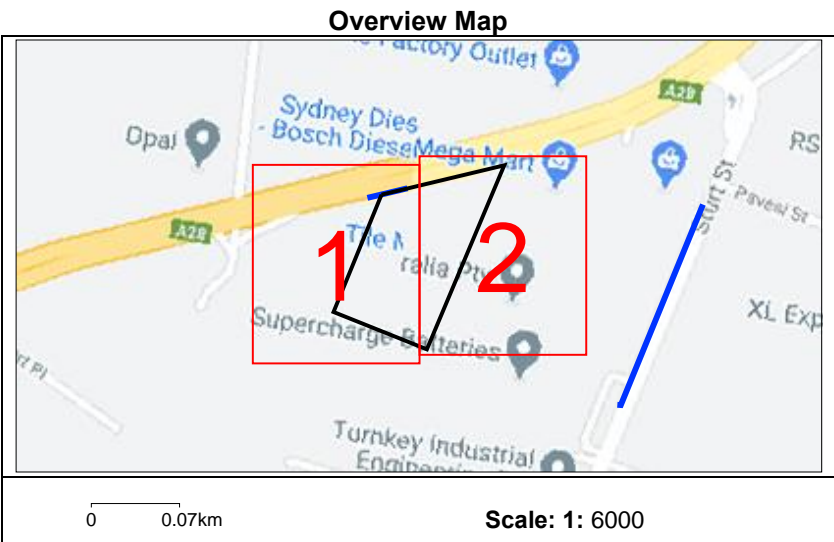
- Use suitably qualified and supervised professionals, particularly if you are working near assets that contain electricity cables or gas pipes.
- Ensure the below minimum clearance distances between the construction activities and the actual location of our assets are met. If you need clearance distances for our above ground assets, or if the below distances cannot be met, call **1800 786 306** to discuss.

Minimum assets clearance distances.

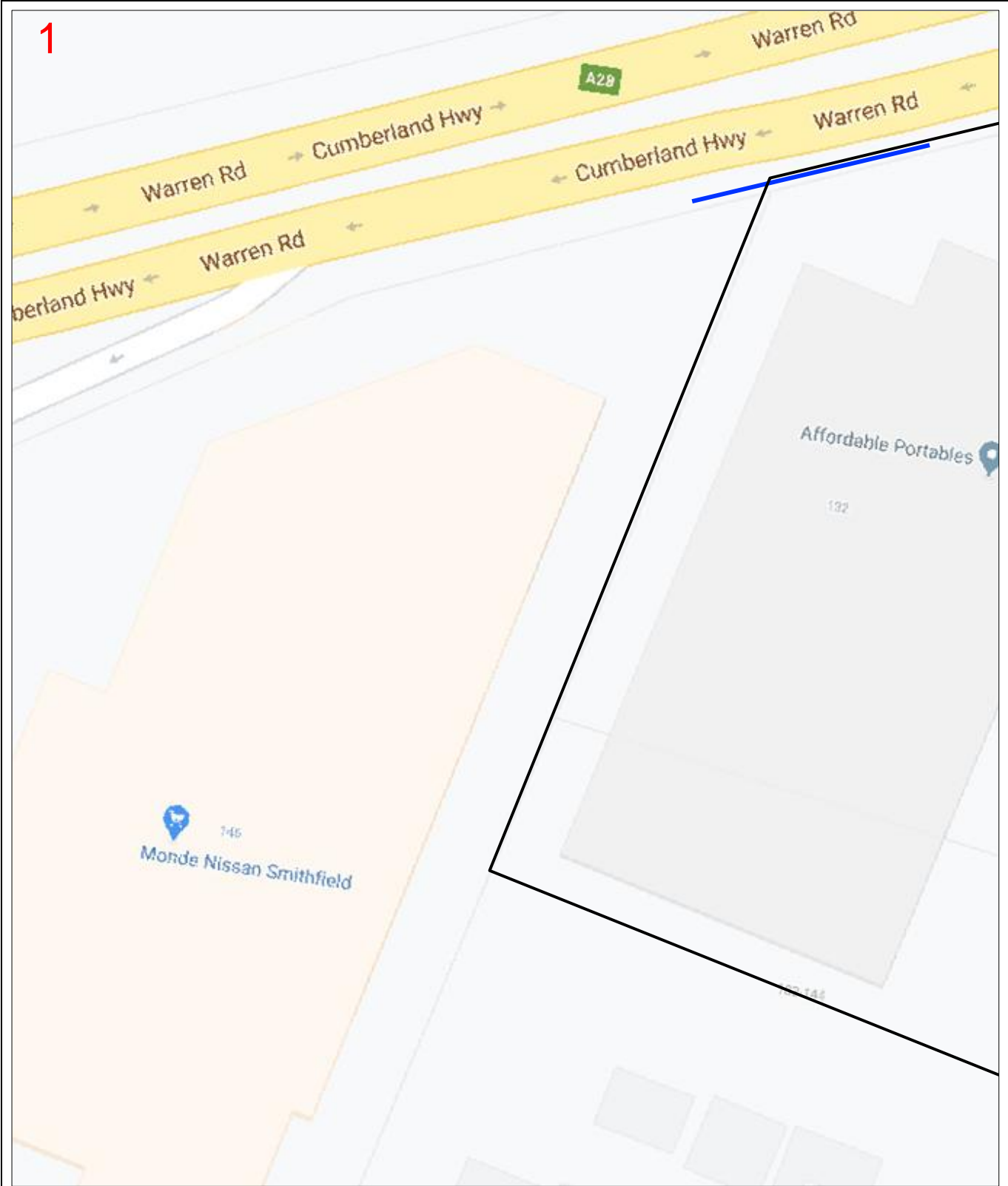
- 300mm when laying asset inline, horizontal or vertical.
 - 1000mm when operating vibrating equipment. Eg: vibrating plates. No vibrating equipment on top of asset.
 - 1000mm when operating mechanical excavators or jackhammers/pneumatic breakers.
 - 2000mm when performing directional bore in-line, horizontal and vertical.
 - No heavy vehicle over 3 tonnes to be driven over asset with less than 600mm of cover.
- Reinstate exposed TPG network infrastructure back to original state.

PRIVACY & CONFIDENTIALITY

- Privacy Notice – Your information has been provided to us by Dial Before You Dig to respond to your Dial Before You Dig enquiry. We will keep your personal information in accordance with TPG's privacy policy, see www.tpg.com.au/about/privacy.
- Confidentiality – The information we have provided to you is confidential and is to be used only for planning and designing purposes in connection with your Dial Before You Dig enquiry. Please dispose of the information by shredding or other secure disposal method after use. We retain all intellectual property rights (including copyrights) in all our documents and plans.



TPG Corporation Limited



Enquiry Number: 108591658

Map Sheet: 1

Scale: 1: 750

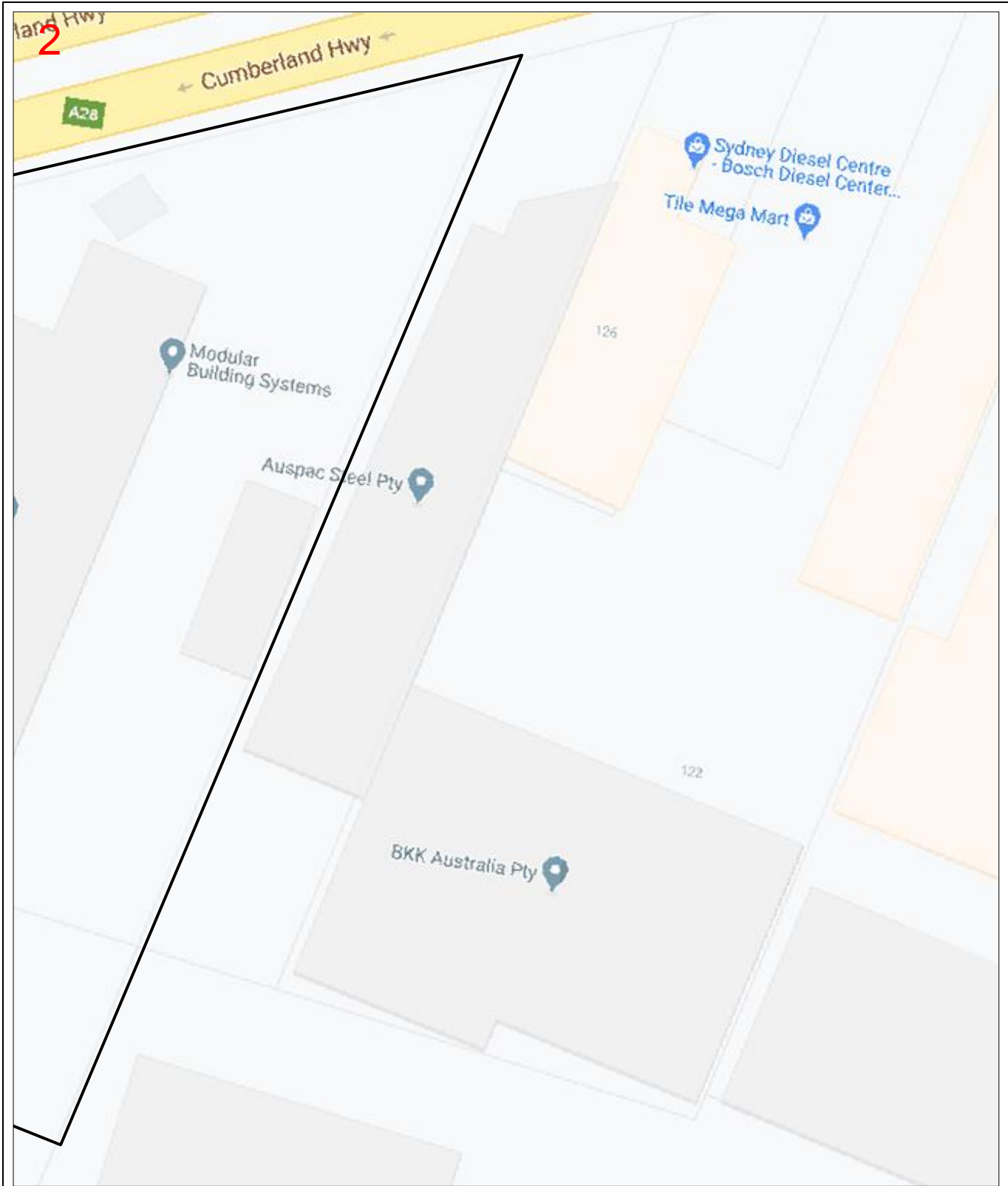
0 0.008km

LEGEND

DBYD Work Area

AAPT/PowerTel Pit		TransACT Pit	
AAPT/PowerTel Duct		TransACT Duct	
DDA Pit		SOUL Pattinson Telecoms Pit	
DDA Duct		SOUL Pattinson Telecoms Duct	
Agile/Adam Pit		PIPE Networks Pit	
Agile/Adam Duct		PIPE Networks Duct	

DISCLAIMER: No responsibility/liability is taken by TPG Corporation Limited for any inaccuracy, error, omission or action based on the information supplied in this correspondence. © 2020 TPG Corporation Limited.



Enquiry Number: 108591658

Map Sheet: 2

Scale: 1: 750

0 0.008km

LEGEND

DBYD Work Area

AAPT/PowerTel Pit		TransACT Pit	
AAPT/PowerTel Duct		TransACT Duct	
DDA Pit		SOUL Pattinson Telecoms Pit	
DDA Duct		SOUL Pattinson Telecoms Duct	
Agile/Adam Pit		PIPE Networks Pit	
Agile/Adam Duct		PIPE Networks Duct	

DISCLAIMER: No responsibility/liability is taken by TPG Corporation Limited for any inaccuracy, error, omission or action based on the information supplied in this correspondence. © 2020 TPG Corporation Limited.

WARNING

- **All electrical apparatus shall be regarded as live until proved de-energised.** Contact with live electrical apparatus will cause severe injury or death.
- In accordance with the *Electricity Supply Act 1995*, you are obliged to report any damage to Endeavour Energy Assets immediately by calling **131 003**.
- The customer must obtain a new set of plans from Endeavour Energy if work has not been started or completed within twenty **(20)** working days of the original plan issue date.
- The customer must contact Endeavour Energy if any of the plans provided have blank pages, as some underground asset information may be incomplete.
- Endeavour Energy underground earth grids may exist and their location **may not** be shown on plans. Persons excavating are expected to exercise all due care, especially in the vicinity of padmount substations, pole mounted substations, pole mounted switches, transmission poles and towers.
- Endeavour Energy plans **do not** show any underground customer service mains or information relating to service mains within private property.
- Asbestos or asbestos-containing material may be present on or near Endeavour Energy's underground assets.
- Organo-Chloride Pesticides (OCP) may be present in some sub-transmission trenches.
- All plans must be printed and made available at the worksite where excavation is to be undertaken. Plans must be reviewed and understood by the crew on site prior to commencing excavation.

INFORMATION PROVIDED BY ENDEAVOUR ENERGY

- Any plans provided pursuant to this service are intended to show the approximate location of underground assets relative to road boundaries, property fences and other structures at the time of installation.
- Depth of underground assets may vary significantly from information provided on plans as a result of changes to road, footpath or surface levels subsequent to installation.
- Such plans have been prepared solely for use by Endeavour Energy staff for design, construction and maintenance purposes.
- All enquiry details and results are kept in a register.

DISCLAIMER

Whilst Endeavour Energy has taken all reasonable steps to ensure that the information contained in the plans is as accurate as possible it will accept no liability for inaccuracies in the information shown on such plans.

WARNING
THIS EXCAVATION IS IN THE VICINITY OF
ENDEAVOUR ENERGY TRANSMISSION, PILOT,
COMMUNICATION OR FIBRE OPTIC CABLES
PLEASE RING 9853 7121 or MOB. 0407 468 626
4 WORKING DAYS BEFORE COMMENCING WORK

LEGEND

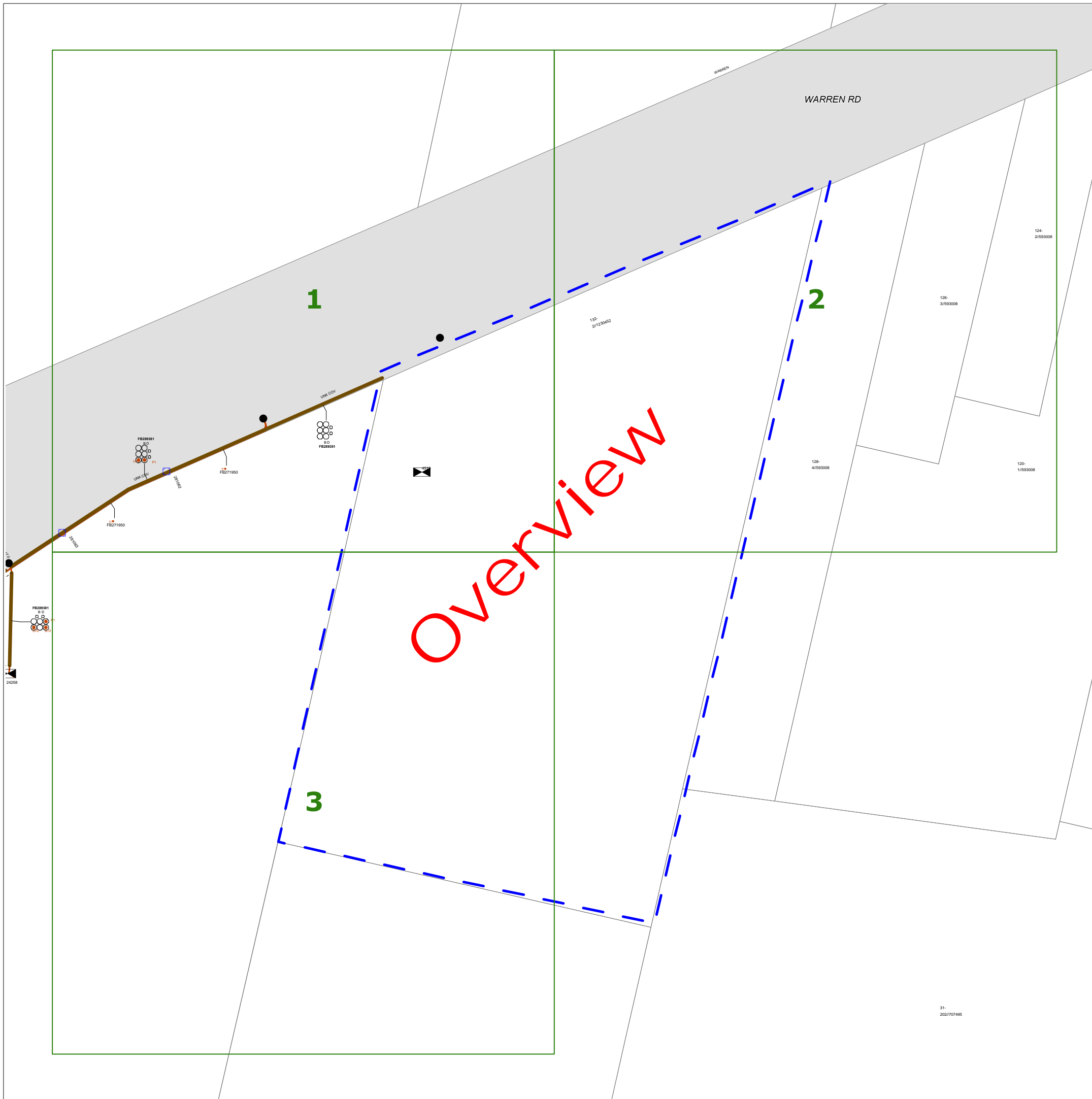
- or ■ Street light column
- ▤ Padmount substation
- or ■ Overground pillar (O.G.Box)
- ▤ Underground pit
- ▬ Duct run
- ▬ Cable run
- ⊙ Typical duct section
- ▲ Asbestos warning



NOT TO SCALE

DBYD Sequence No.:	108591659
Issued Date:	13/04/2021

Cadastre: © Land and Property Information 2015, 2016



WARNING

- **All electrical apparatus shall be regarded as live until proved de-energised.** Contact with live electrical apparatus will cause severe injury or death.
- In accordance with the *Electricity Supply Act 1995*, you are obliged to report any damage to Endeavour Energy Assets immediately by calling **131 003**.
- The customer must obtain a new set of plans from Endeavour Energy if work has not been started or completed within twenty **(20)** working days of the original plan issue date.
- The customer must contact Endeavour Energy if any of the plans provided have blank pages, as some underground asset information may be incomplete.
- Endeavour Energy underground earth grids may exist and their location **may not** be shown on plans. Persons excavating are expected to exercise all due care, especially in the vicinity of padmount substations, pole mounted substations, pole mounted switches, transmission poles and towers.
- Endeavour Energy plans **do not** show any underground customer service mains or information relating to service mains within private property.
- Asbestos or asbestos-containing material may be present on or near Endeavour Energy's underground assets.
- Organo-Chloride Pesticides (OCP) may be present in some sub-transmission trenches.
- All plans must be printed and made available at the worksite where excavation is to be undertaken. Plans must be reviewed and understood by the crew on site prior to commencing excavation.

INFORMATION PROVIDED BY ENDEAVOUR ENERGY

- Any plans provided pursuant to this service are intended to show the approximate location of underground assets relative to road boundaries, property fences and other structures at the time of installation.
- Depth of underground assets may vary significantly from information provided on plans as a result of changes to road, footpath or surface levels subsequent to installation.
- Such plans have been prepared solely for use by Endeavour Energy staff for design, construction and maintenance purposes.
- All enquiry details and results are kept in a register.

DISCLAIMER

Whilst Endeavour Energy has taken all reasonable steps to ensure that the information contained in the plans is as accurate as possible it will accept no liability for inaccuracies in the information shown on such plans.

WARNING
THIS EXCAVATION IS IN THE VICINITY OF
ENDEAVOUR ENERGY TRANSMISSION, PILOT,
COMMUNICATION OR FIBRE OPTIC CABLES
PLEASE RING 9853 7121 or MOB. 0407 468 626
4 WORKING DAYS BEFORE COMMENCING WORK

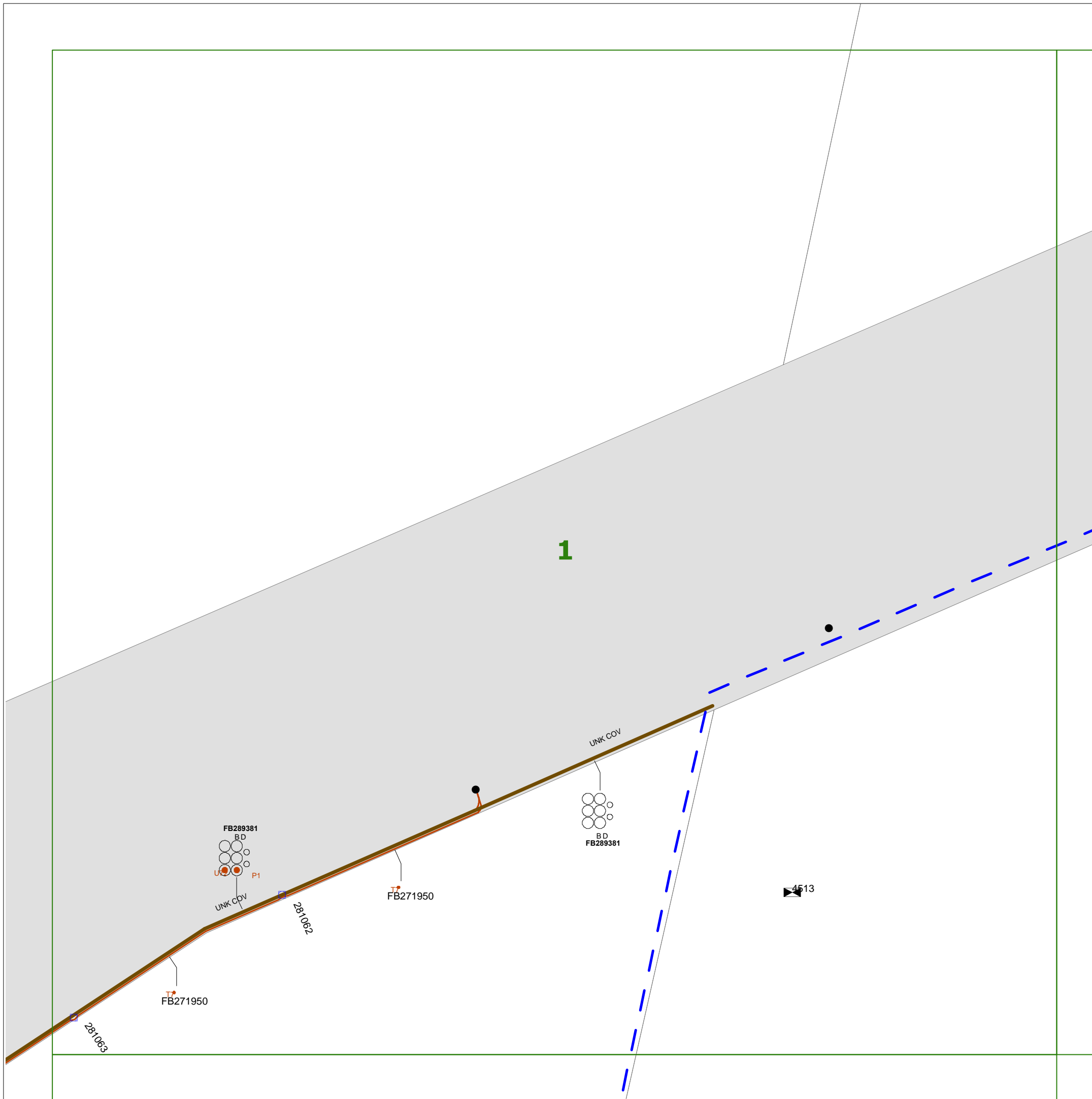
LEGEND

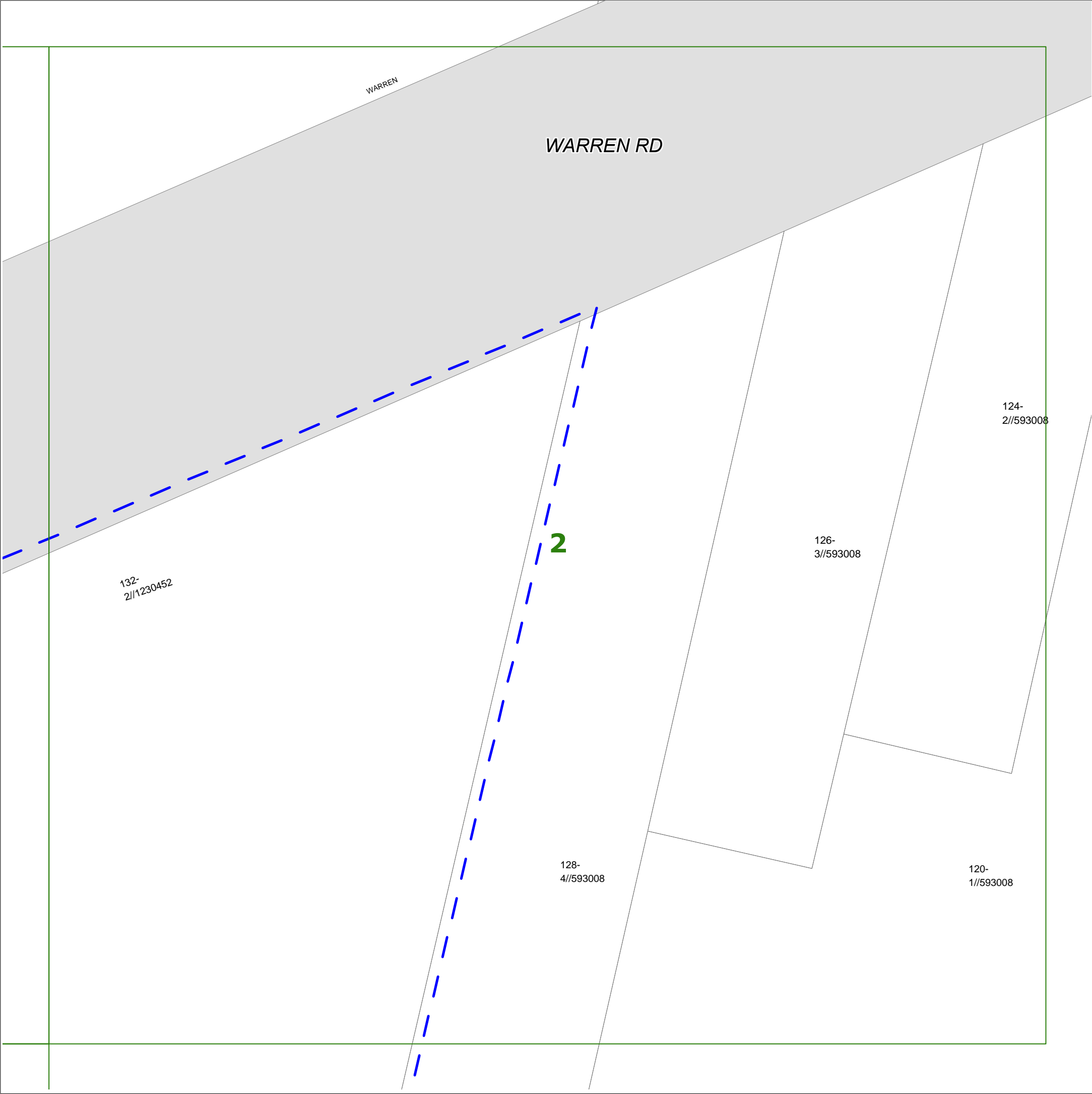
- or ■ Street light column
- ▤ Padmount substation
- or ■ Overground pillar (O.G.Box)
- ▤ Underground pit
- Duct run
- Cable run
- ⊙ Typical duct section
- ▲ Asbestos warning

**NOT TO SCALE**

DBYD Sequence No.:	108591659
Issued Date:	13/04/2021

Cadastre: © Land and Property Information 2015, 2016





WARNING

- **All electrical apparatus shall be regarded as live until proved de-energised.** Contact with live electrical apparatus will cause severe injury or death.
- In accordance with the *Electricity Supply Act 1995*, you are obliged to report any damage to Endeavour Energy Assets immediately by calling **131 003**.
- The customer must obtain a new set of plans from Endeavour Energy if work has not been started or completed within twenty **(20)** working days of the original plan issue date.
- The customer must contact Endeavour Energy if any of the plans provided have blank pages, as some underground asset information may be incomplete.
- Endeavour Energy underground earth grids may exist and their location **may not** be shown on plans. Persons excavating are expected to exercise all due care, especially in the vicinity of padmount substations, pole mounted substations, pole mounted switches, transmission poles and towers.
- Endeavour Energy plans **do not** show any underground customer service mains or information relating to service mains within private property.
- Asbestos or asbestos-containing material may be present on or near Endeavour Energy's underground assets.
- Organo-Chloride Pesticides (OCP) may be present in some sub-transmission trenches.
- All plans must be printed and made available at the worksite where excavation is to be undertaken. Plans must be reviewed and understood by the crew on site prior to commencing excavation.

INFORMATION PROVIDED BY ENDEAVOUR ENERGY

- Any plans provided pursuant to this service are intended to show the approximate location of underground assets relative to road boundaries, property fences and other structures at the time of installation.
- Depth of underground assets may vary significantly from information provided on plans as a result of changes to road, footpath or surface levels subsequent to installation.
- Such plans have been prepared solely for use by Endeavour Energy staff for design, construction and maintenance purposes.
- All enquiry details and results are kept in a register.

DISCLAIMER

Whilst Endeavour Energy has taken all reasonable steps to ensure that the information contained in the plans is as accurate as possible it will accept no liability for inaccuracies in the information shown on such plans.

WARNING

THIS EXCAVATION IS IN THE VICINITY OF ENDEAVOUR ENERGY TRANSMISSION, PILOT, COMMUNICATION OR FIBRE OPTIC CABLES. PLEASE RING 9853 7121 or MOB. 0407 468 626 4 WORKING DAYS BEFORE COMMENCING WORK

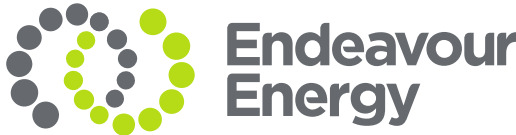
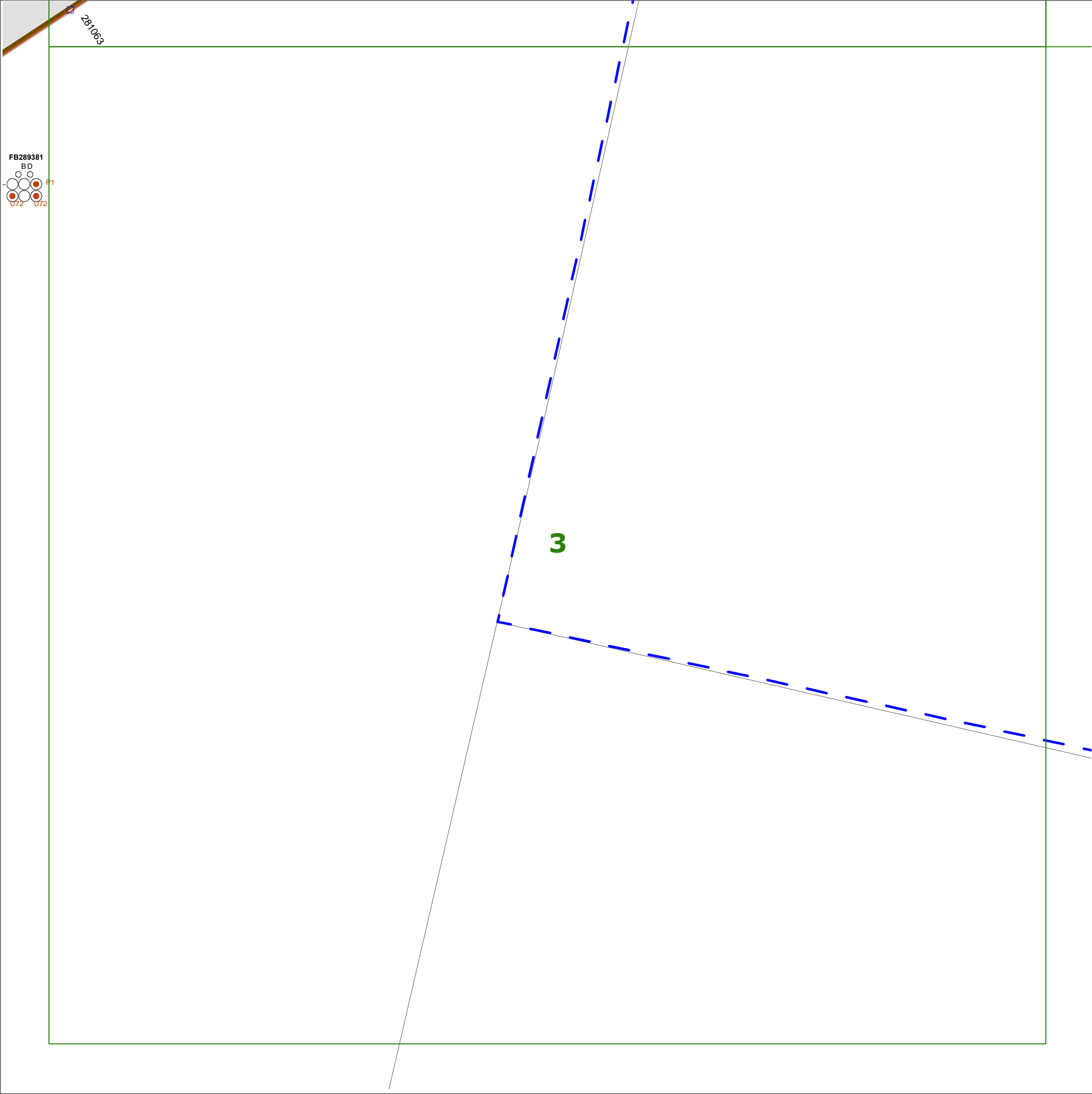
LEGEND

- or Street light column
- Padmount substation
- or Overground pillar (O.G.Box)
- Underground pit
- Duct run
- Cable run
- Typical duct section
- Asbestos warning



NOT TO SCALE

DBYD Sequence No.:	108591659
Issued Date:	13/04/2021



WARNING

- **All electrical apparatus shall be regarded as live until proved de-energised.** Contact with live electrical apparatus will cause severe injury or death.
- In accordance with the *Electricity Supply Act 1995*, you are obliged to report any damage to Endeavour Energy Assets immediately by calling **131 003**.
- The customer must obtain a new set of plans from Endeavour Energy if work has not been started or completed within twenty **(20)** working days of the original plan issue date.
- The customer must contact Endeavour Energy if any of the plans provided have blank pages, as some underground asset information may be incomplete.
- Endeavour Energy underground earth grids may exist and their location **may not** be shown on plans. Persons excavating are expected to exercise all due care, especially in the vicinity of padmount substations, pole mounted substations, pole mounted switches, transmission poles and towers.
- Endeavour Energy plans **do not** show any underground customer service mains or information relating to service mains within private property.
- Asbestos or asbestos-containing material may be present on or near Endeavour Energy's underground assets.
- Organo-Chloride Pesticides (OCP) may be present in some sub-transmission trenches.
- All plans must be printed and made available at the worksite where excavation is to be undertaken. Plans must be reviewed and understood by the crew on site prior to commencing excavation.

INFORMATION PROVIDED BY ENDEAVOUR ENERGY




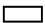






- Any plans provided pursuant to this service are intended to show the approximate location of underground assets relative to road boundaries, property fences and other structures at the time of installation.
- Depth of underground assets may vary significantly from information provided on plans as a result of changes to road, footpath or surface levels subsequent to installation.
- Such plans have been prepared solely for use by Endeavour Energy staff for design, construction and maintenance purposes.
- All enquiry details and results are kept in a register.

DISCLAIMER

Whilst Endeavour Energy has taken all reasonable steps to ensure that the information contained in the plans is as accurate as possible it will accept no liability for inaccuracies in the information shown on such plans.

WARNING
THIS EXCAVATION IS IN THE VICINITY OF
ENDEAVOUR ENERGY TRANSMISSION, PILOT,
COMMUNICATION OR FIBRE OPTIC CABLES
PLEASE RING 9853 7121 or MOB. 0407 468 626
4 WORKING DAYS BEFORE COMMENCING WORK

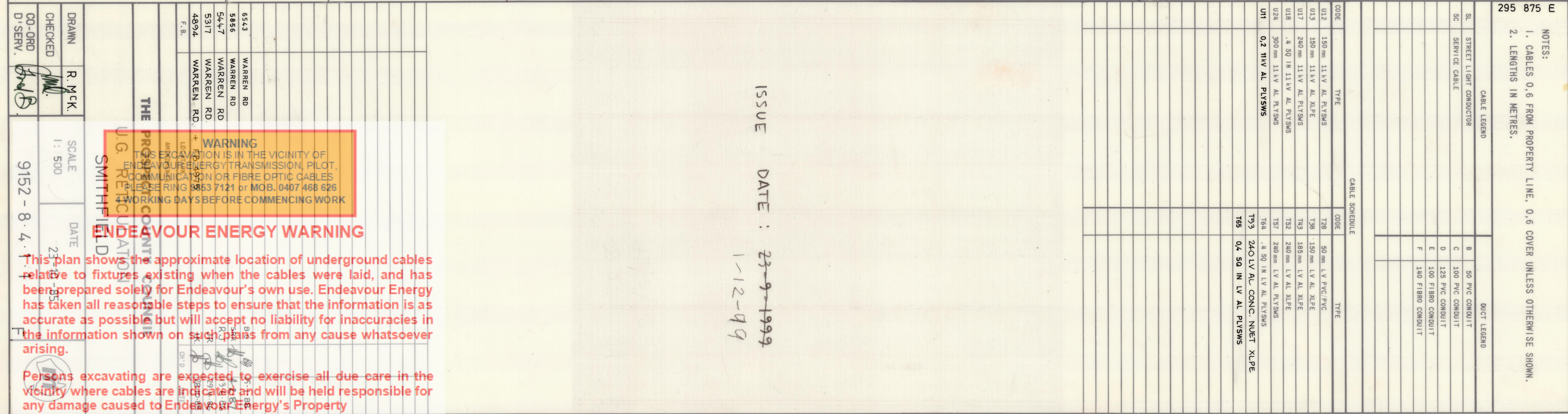
LEGEND

-  or  Street light column
-  Padmount substation
-  or  Overground pillar (O.G.Box)
-  Underground pit
-  Duct run
-  Cable run
-  Typical duct section
-  Asbestos warning

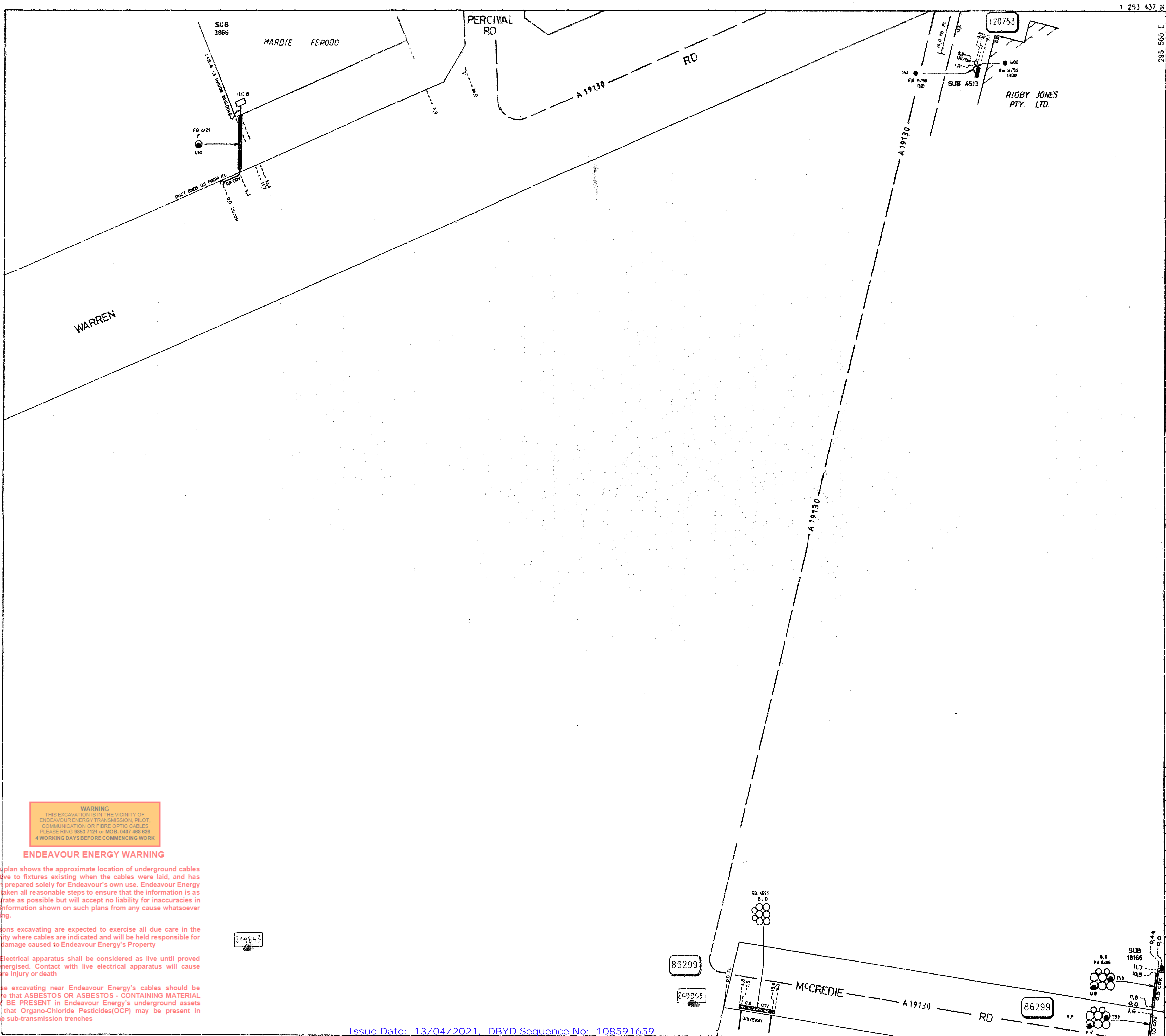


NOT TO SCALE

DBYD Sequence No.:	108591659
Issued Date:	13/04/2021



Those excavating near Endeavour Energy's cables should be aware that ASBESTOS OR ASBESTOS - CONTAINING MATERIAL MAY BE PRESENT in Endeavour Energy's underground assets and that Organo-Chloride Pesticides(OCP) may be present in some sub-transmission trenches



1 253 437 N

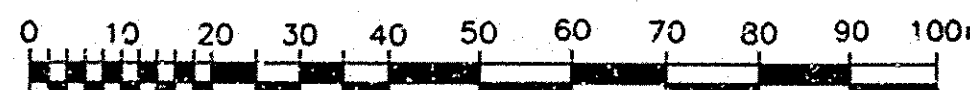
NOTES:

1. CABLES 0.6 FROM PROPERTY LINE. 0.6 COVER UNLESS OTHERWISE SHOWN.
2. LENGTHS IN METRES.

CABLE LEGEND		DUCT LEGEND	
B	STREET LIGHT CONDUIT	B	50 PVC CONDUIT
AC	REINFORCE CABLE	C	100 PVC CONDUIT
		D	125 PVC CONDUIT
		E	150 FIBRE CONDUIT
		F	140 FIBRE CONDUIT

CABLE SCHEDULE			
CODE	TYPE	CODE	TYPE
U12	100mm 11kV AL PLYS	T28	50mm LV PVC PVC
U13	150mm 11kV AL PLYS	T30	150mm LV AL XLPE
U17	240mm 11kV AL PLYS	T63	185mm LV AL XLPE
U18	18 50mm 11kV AL PLYS	T52	240mm LV AL XLPE
U24	300mm 11kV AL PLYS	T57	240mm LV AL PLYS
U10	15 50mm 11kV AL PLYS	T63	18 50mm LV AL PLYS
U00	0.025 50mm 11kV AL PLYS	T63	18 50mm LV AL PLYS
		T53	240mm LV AL XLPE (CON. NEUT.)

SCANNED



ISSUE DATE: 12-12-95
19-1-99

WARNING
THIS EXCAVATION IS IN THE VICINITY OF
ENDEAVOUR ENERGY TRANSMISSION, PILOT,
COMMUNICATION OR FIBRE OPTIC CABLES.
PLEASE RING 9853 7121 or MOB. 0407 468 626
4 WORKING DAYS BEFORE COMMENCING WORK

ENDEAVOUR ENERGY WARNING

This plan shows the approximate location of underground cables relative to fixtures existing when the cables were laid, and has been prepared solely for Endeavour's own use. Endeavour Energy has taken all reasonable steps to ensure that the information is as accurate as possible but will accept no liability for inaccuracies in the information shown on such plans from any cause whatsoever arising.

Persons excavating are expected to exercise all due care in the vicinity where cables are indicated and will be held responsible for any damage caused to Endeavour Energy's Property

All Electrical apparatus shall be considered as live until proved de-energised. Contact with live electrical apparatus will cause severe injury or death

Those excavating near Endeavour Energy's cables should be aware that ASBESTOS OR ASBESTOS - CONTAINING MATERIAL MAY BE PRESENT in Endeavour Energy's underground assets and that Organo-Chloride Pesticides(OCP) may be present in some sub-transmission trenches

249853

86299

249853

86299

