

# Snack Brands Horizon Stage 2 - Industrial Development

685-649 Mamre Road, Orchard Hills, NSW 2748

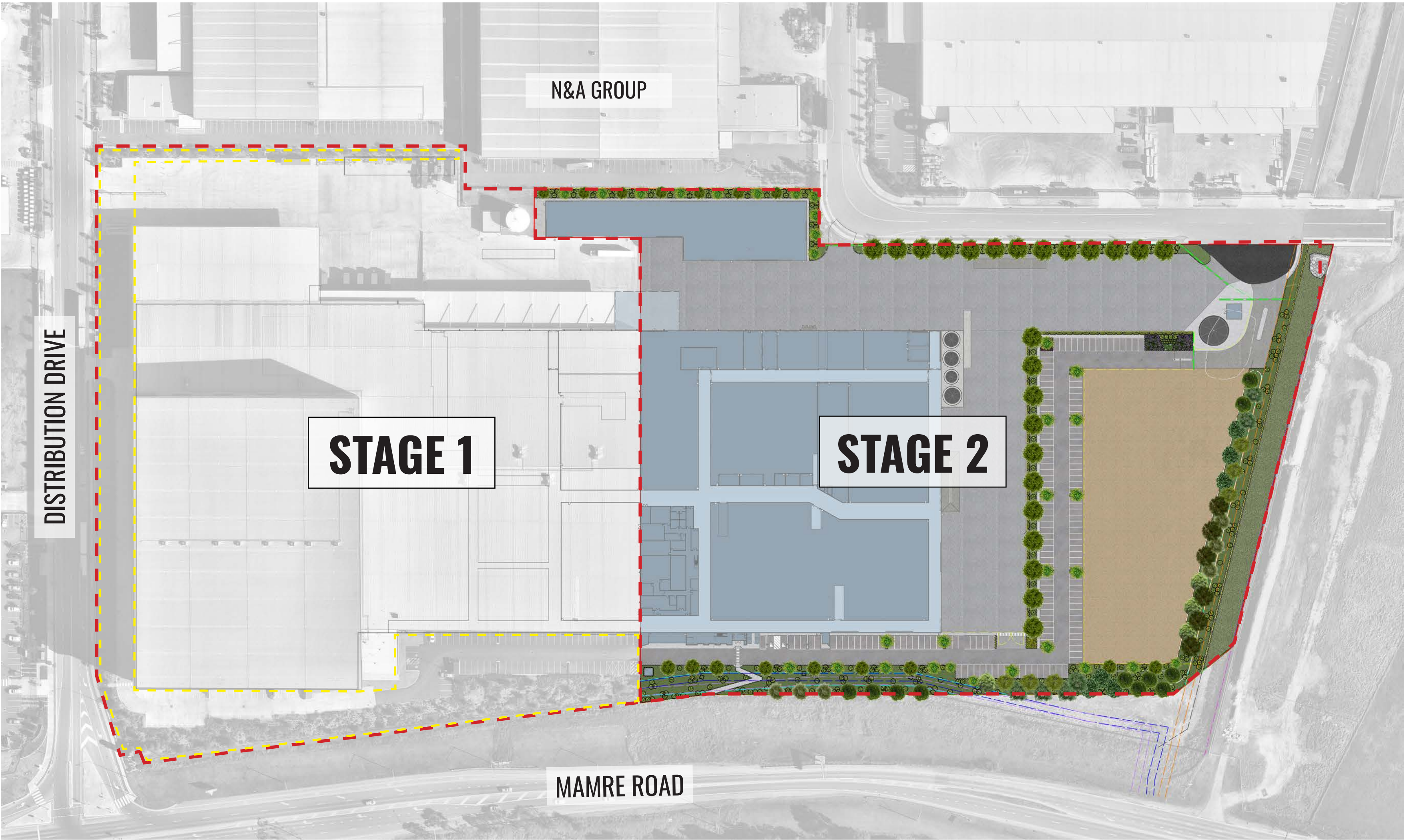
## Landscape Documentation for State Significant Documentation Application



IMAGE TAKEN FROM NEARMAP 2021

### Drawing Register

Dwg No.	Drawing Name
SSD-00	Landscape Cover Sheet
SSD-01	Landscape Plan
SSD-02	Landscape Detail Plan
SSD-03	Landscape Sections
SSD-04	Typical Landscape Details
SSD-05	Typical Specifications
SSD-06	Planting Schedule & Imagery



KEY       SITE BOUNDARY       EXISTING LANDSCAPE TO REMAIN AS APPROVED UNDER SSD 9429

 SITE PLAN  
NTS

Drawing Title:  
**Landscape Cover Sheet**  
DWG No:


**SSD-00**

**GEOSCAPES**  
LANDSCAPE ARCHITECTS  
Suite 215, 284 Victoria Ave, Chatswood NSW 2067 Ph. (02) 9411 1485  
www.geoscapes.com.au  
ABN 84 620 205 781 ACN 620 205 781

Architect:  
**hla** architects

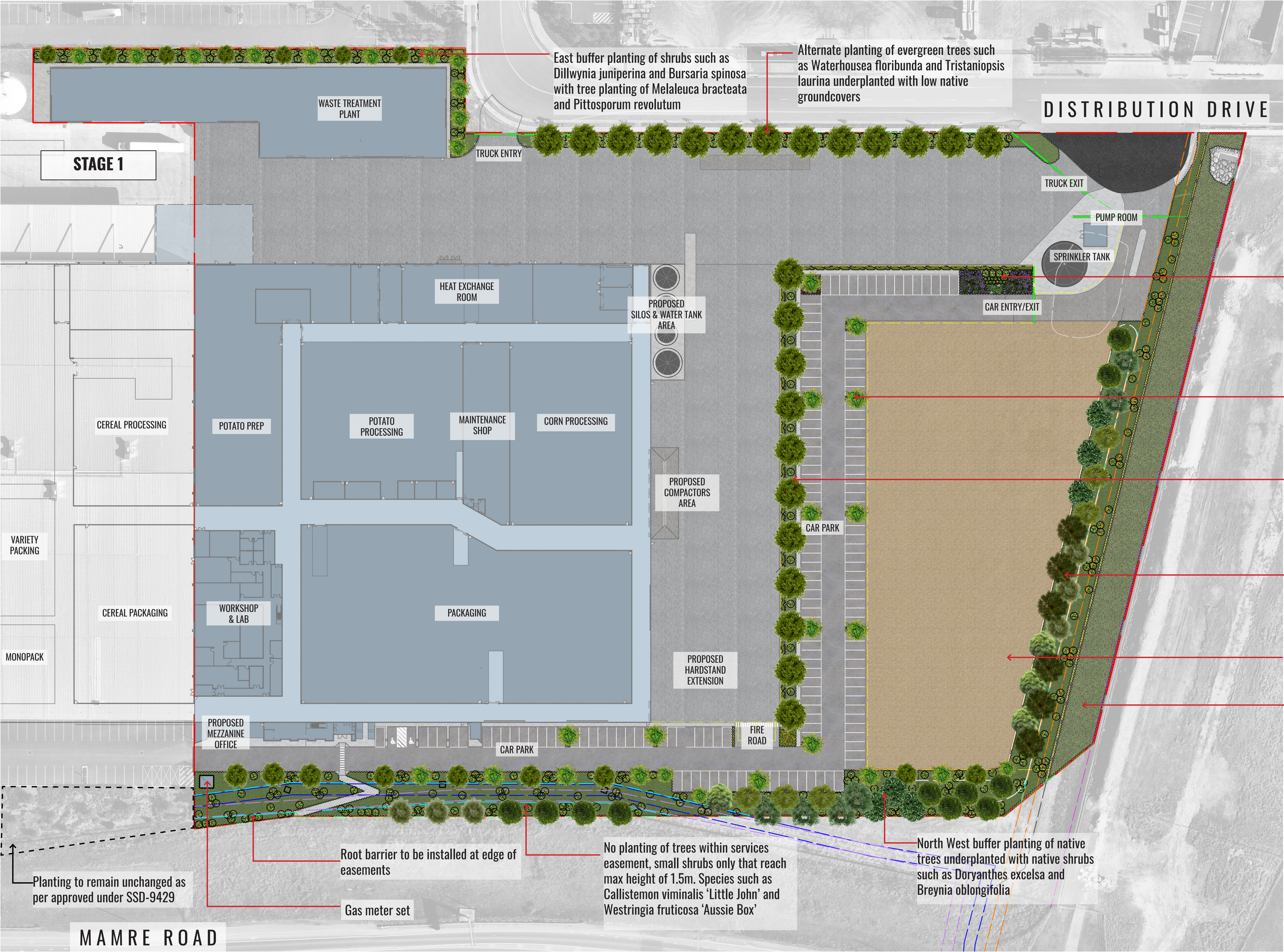
Project Manager:  
**TMX** 

Client:  


Scale:	Date:	Job Number:	North:	Revision					FOR SSD APPLICATION	
1:800 @ A1	02.07.21	210222		Rev	Date	Description	Drawn	Checked		
1:1600 @ A3				-	21.04.21	FOR SSD DRAFT	KC	BG		
Project:						A	09.06.21	FOR SSD	KC	BG
Snack Brands Horizon 685-649 Mamre Road, Orchard Hills, NSW 2748				B	22.06.21	FOR SSD	KC	BG		
				C	02.07.21	FOR SSD	KC	BG		

Snack Brands Horizon  
685-649 Mamre Road, Orchard Hills, NSW 2748





Feature tree planting of flowering Crepe Myrtle Trees to entrance of car park underplanted with native shrubs and groundcovers such as *Correa alba*, *Pimelea humilis* and *Viola hederacea*

Single tree planting to car park islands underplanted with low groundcovers. Species such as *Cupaniopsis anacardioides* and *Myoporum parvifolium*

Tree planting of native evergreen trees to landscape strip with a buffer hedge such as *Acmena smithii* adjacent to chainwire fence

Mixed planting of evergreen trees such as *Eucalyptus moluccana* and *Corymbia maculata* underplanted with groundcovers such as *Dichondra repens*, *Myoporum parvifolium*

Temporary truck car parking area

10m wide drainage easement to be planted with native grasses such as *Themeda australis* and *Microlaena stipoides*. To be slashed or mown as required.


Drawing Title:  
**Landscape Plan**  
DWG No:  
**SSD-01**

**GEOSCAPES**  
LANDSCAPE ARCHITECTS  
Suite 215, 284 Victoria Ave, Chatswood NSW 2067 Ph. (02) 9411 1485  
www.geoscapes.com.au  
ABN 84 620 205 781 ACN 620 205 781

Architect:  
**hla** architects

Project Manager:  
**TMX** invent tomorrow

Client:  
**snackbrands** AUSTRALIA

Scale: 1:500 @ A1  
Date: 02.07.21  
Job Number: 210222  
North:   
Project: **Snack Brands Horizon**  
685-649 Mamre Road, Orchard Hills, NSW 2748

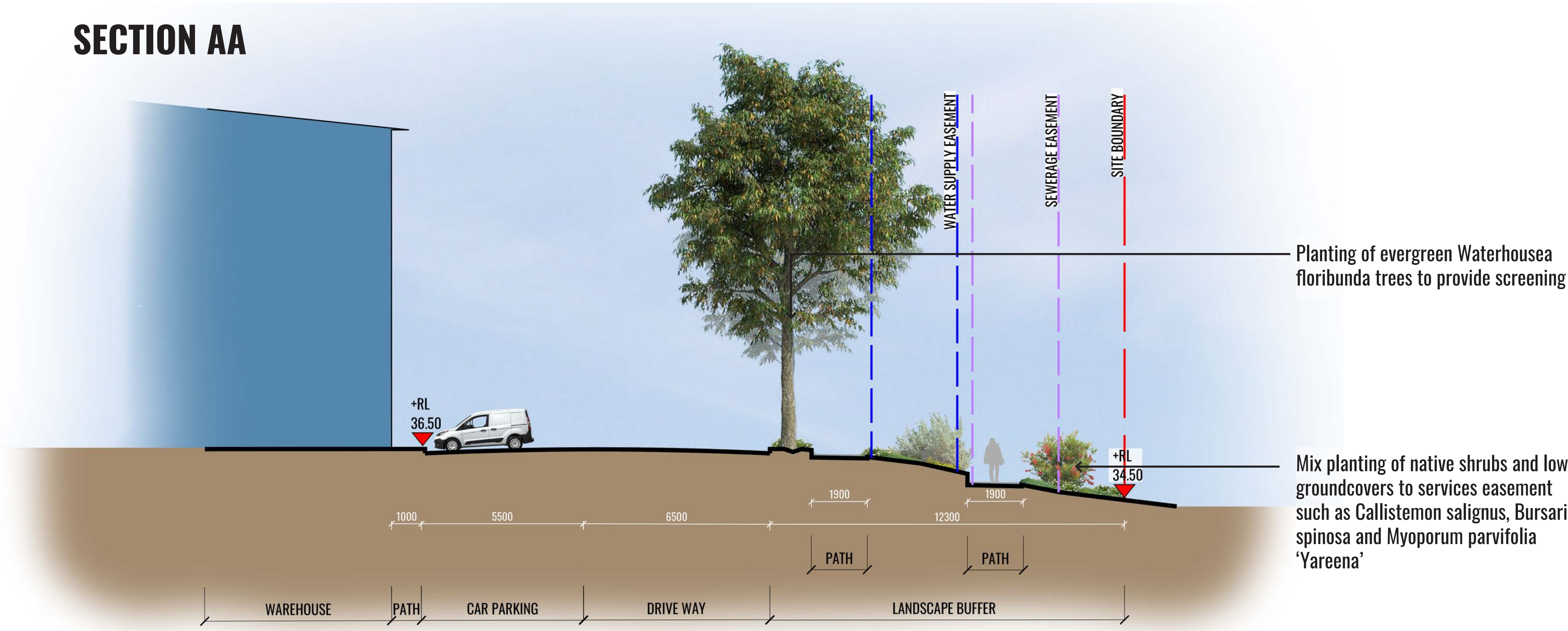
Revision			FOR SSD APPLICATION	
Rev	Date	Description	Drawn	Checked
-	21.04.21	FOR SSD DRAFT	KC	BG
A	09.06.21	FOR SSD	KC	BG
B	22.06.21	FOR SSD	KC	BG
C	02.07.21	FOR SSD	KC	BG



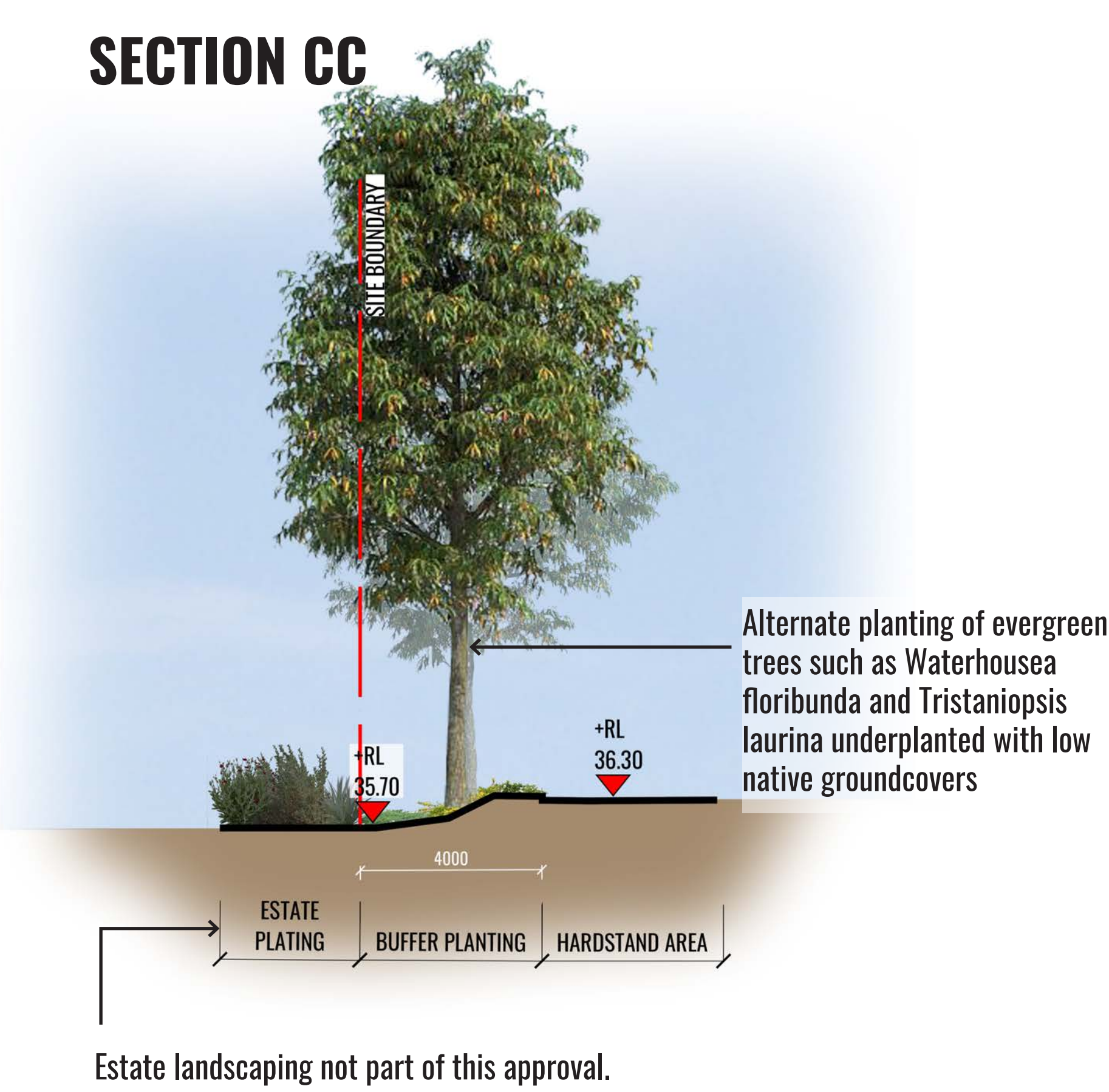




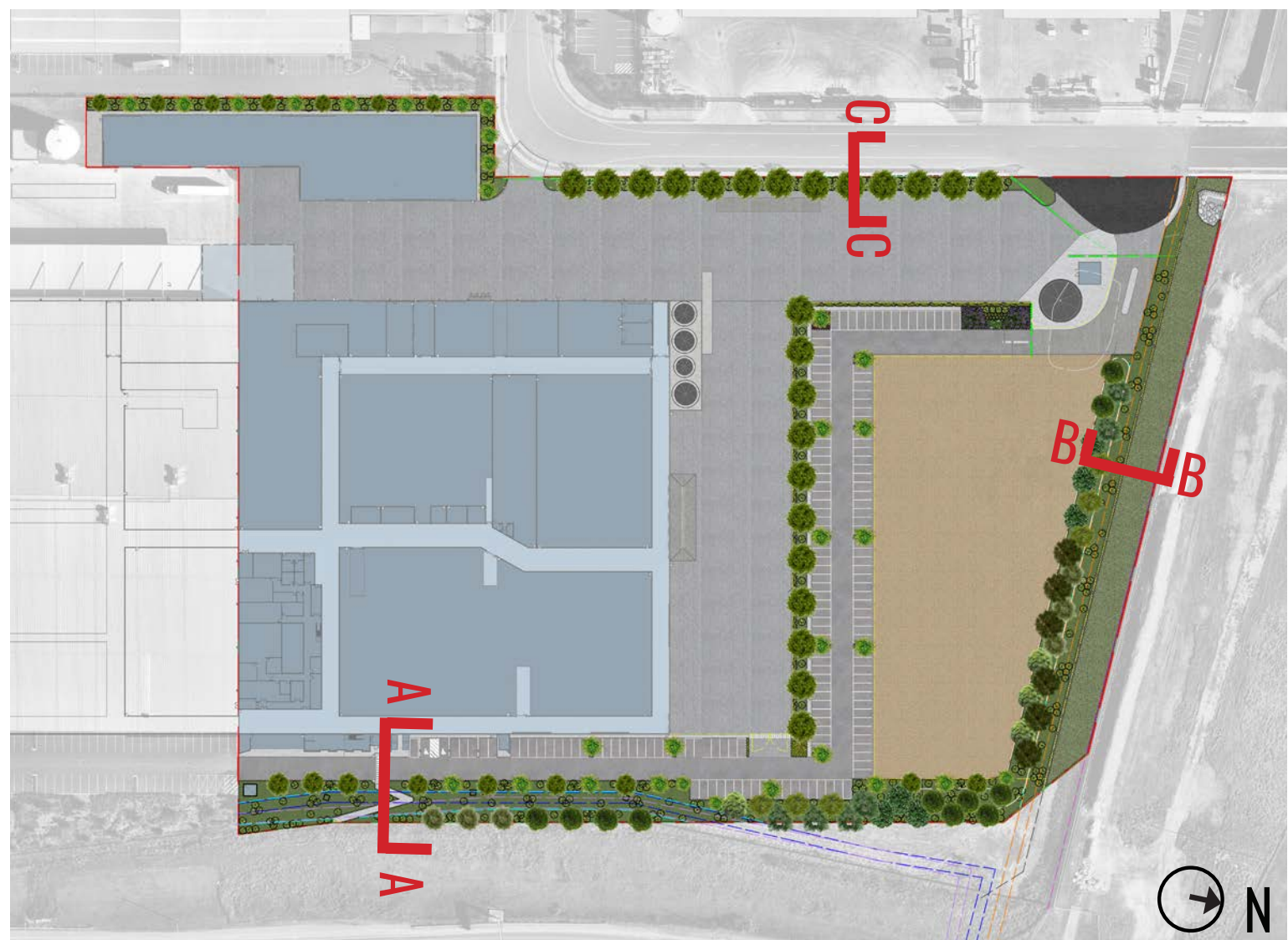
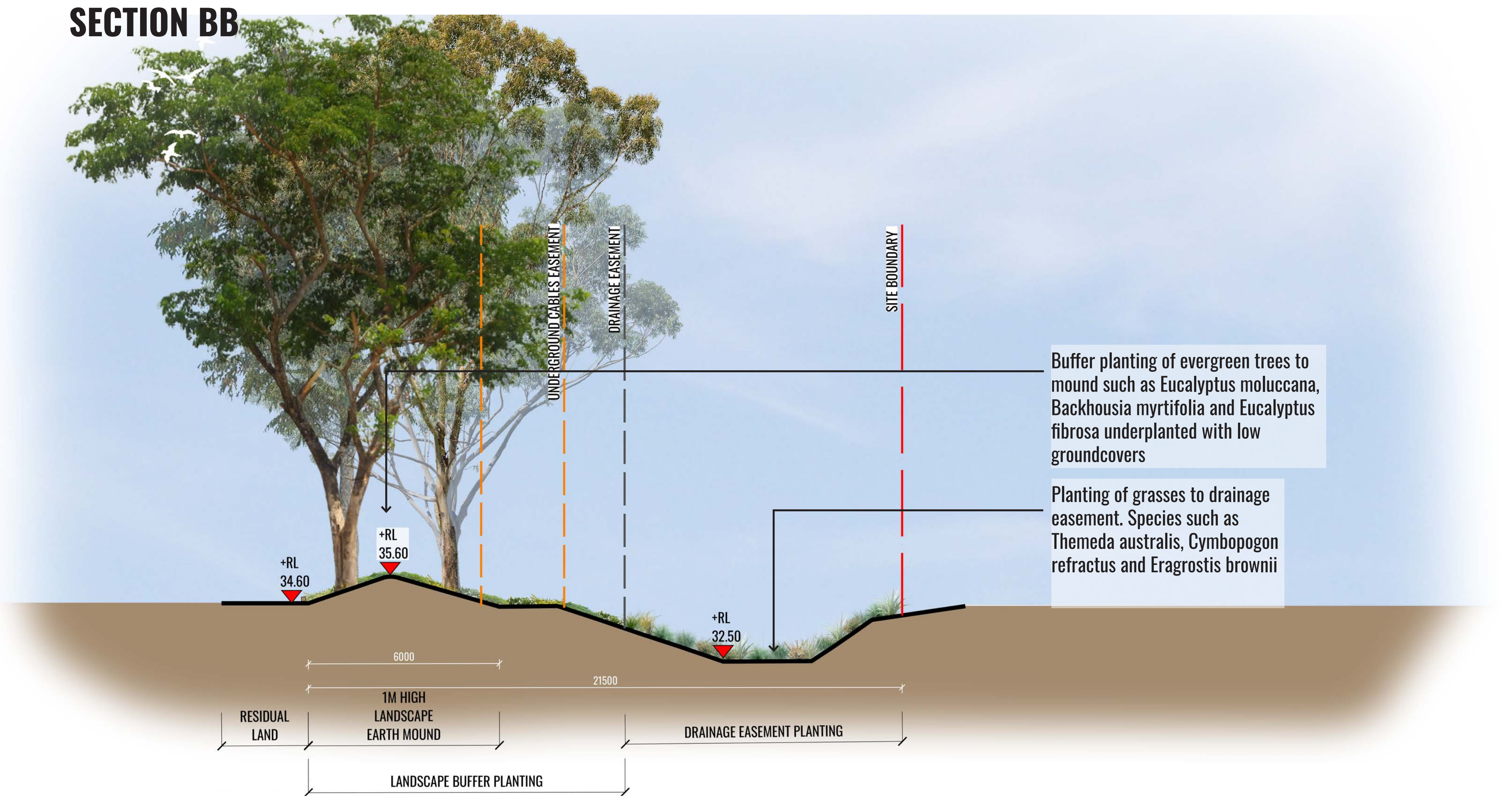
SECTION AA



SECTION CC



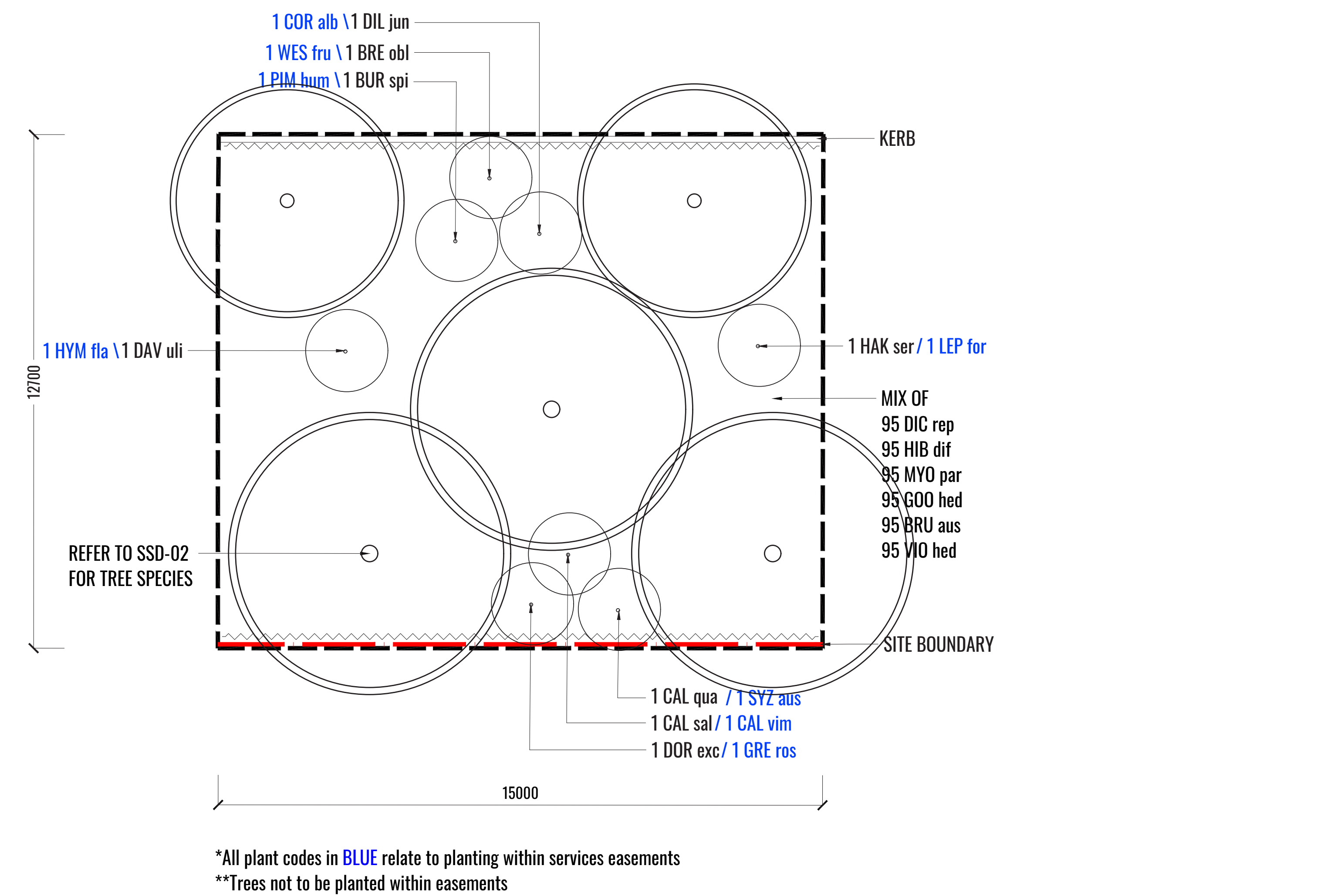
SECTION BB



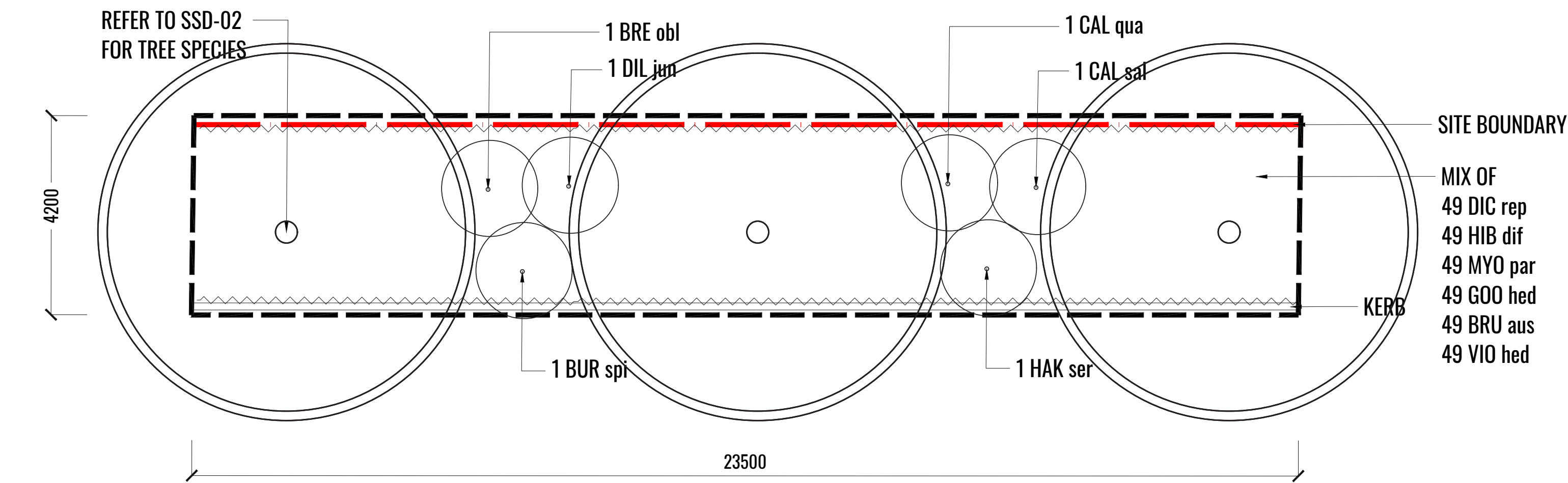
KEY PLAN



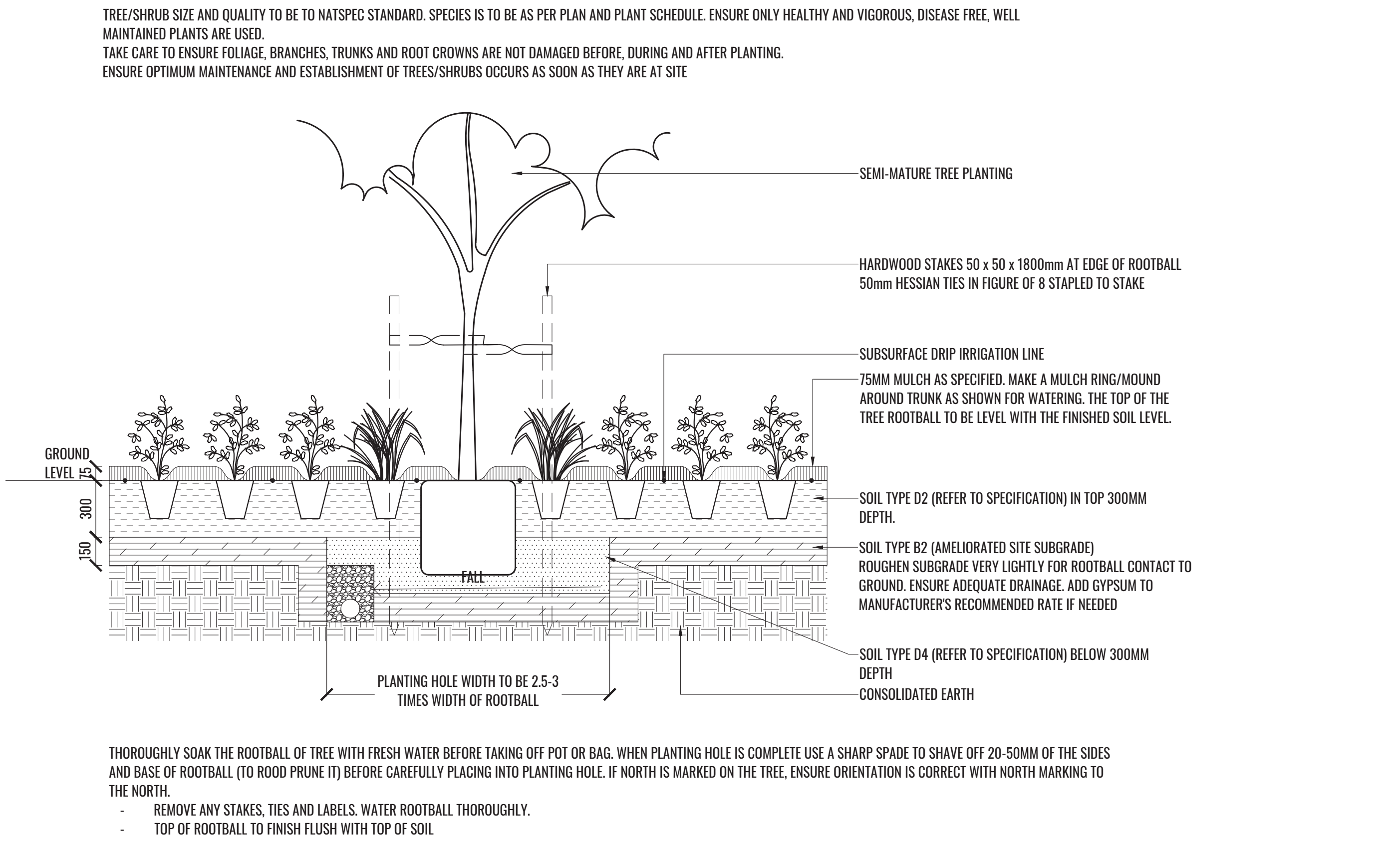
TYPICAL LANDSCAPE DETAILS



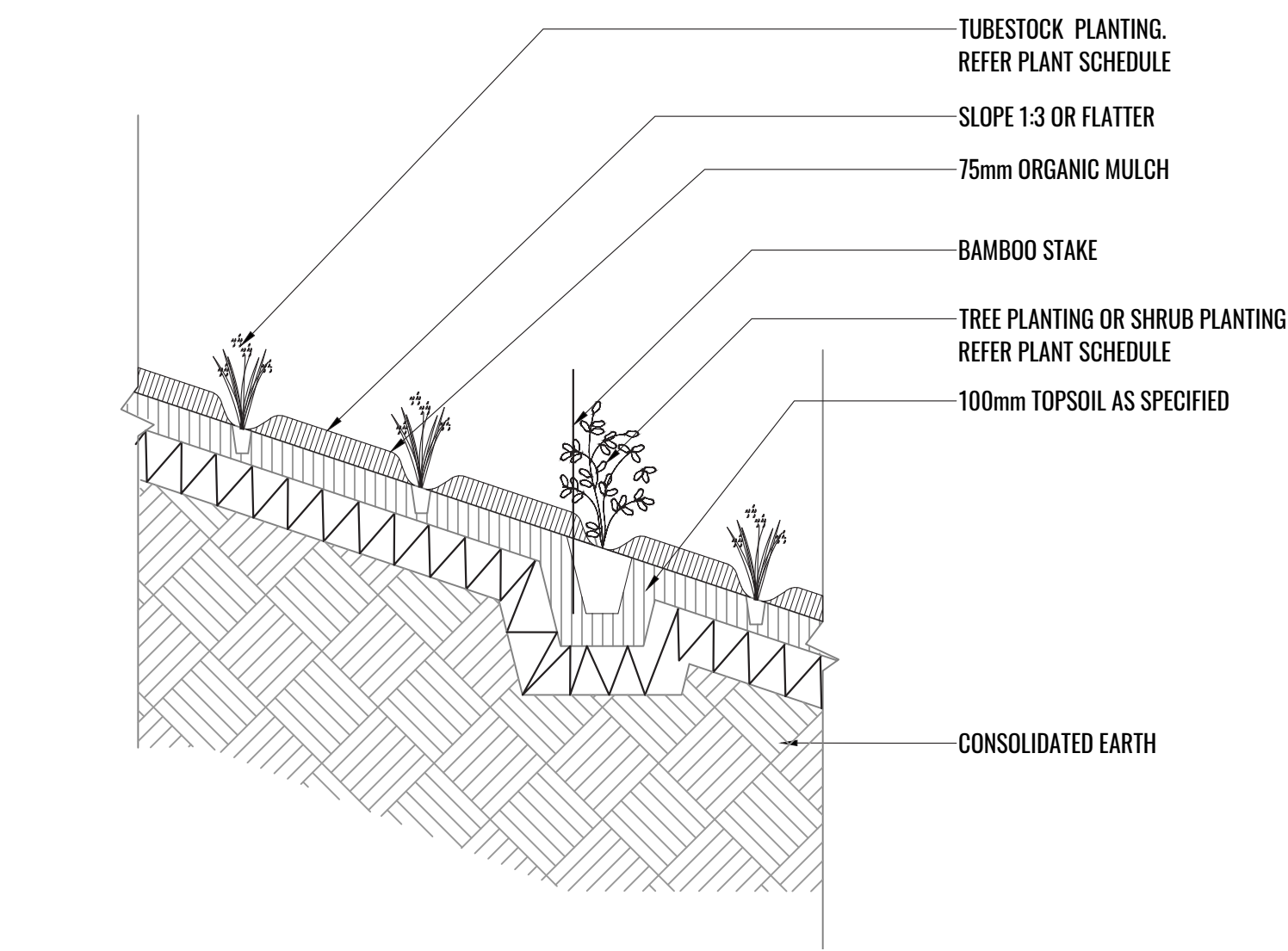
1A NORTH & EAST BUFFER ZONE DETAIL 12.7m x 15m  
PLAN SCALE 1:75



1B WEST BUFFER ZONE DETAIL 4.2m x 23.5m  
PLAN SCALE 1:75



2 MASS PLANTING AND TREE DETAIL  
TYPICAL SECTION SCALE 1:20



3 TUBESTOCK PLANTING ON GRADE 1 IN 3 OR FLATTER  
TYPICAL SECTION SCALE 1:20



MAINTENANCE PLAN & TYPICAL SPECIFICATIONS

Maintenance shall mean the care and maintenance of the landscape works by accepted horticultural practice as rectifying any defects that become apparent in the landscape works under normal use. The landscape contractor shall attend the site on a **weekly basis** to maintain the landscape works commencing from practical completion.

Rubbish Removal

The Landscape Contractor shall undertake rubbish removal from the site on a **weekly basis** to ensure the site remains in tidy condition.

Weed Eradication

Weed growth that may occur in grassed, planted or mulched areas is to be removed using environmentally acceptable methods i.e. non-residual glyphosate herbicide (e.g. ‘Roundup’, applied in accordance with the manufacturer’s direction.

Tree Replacement

Trees shall show signs of healthy vigorous growth and be free from disease and not exhibit signs of stress prior to handover to the client. Any trees or plant that die or fail to thrive, or are damaged or stolen will be replaced. Replacement material shall have the initial maintenance period extended in accordance with the landscape contract conditions. Trees and plant materials shall be equal to the minimum requirements of species specified and approved material delivered to site. Should the condition decline from the approved sample the Superintendent reserves the right to reject the tree / plants.

Frequency: as required.

Stakes

Adjust and/or replace stakes and ties where required. Remove staking and guying when instructed by the Superintendent

Pruning

Selective pruning may be required during the establishment period to promote a balanced canopy structure. These activities shall be carried out to the best horticultural and industry practice. All pruned material is to be removed from site.

Mulched Surfaces

All planter beds and garden areas shall have a minimum depth of 75mm organic mulch. All mulch is to be free of deleterious matter such as soil, weeds, sticks and should conform to AS 4454. Mulched surfaces are to be kept clean and tidy and free of any deleterious material and foreign matter. Reinstate depths to a uniform level of 75mm with mulch as specified, mulch to be free of any wood material impregnated with CCA or similar toxic treatment. Top up mulch levels prior to handover to client & estate management.

Watering

Implement an appropriate hand watering regime in areas not irrigated in association with current watering programme to maintain plant health and vigour. The program shall reflect seasonal conditions and plant species.

Frequency: Weekly or as required.

Soil In Natural Ground

Non-Australian native garden beds to have soil installed consisting of 50% existing site topsoil and 50% new topsoil equal or equivalent to ‘Organic Garden Mix’ as supplied by Australian Native Landscapes. Australian native garden beds to have soil installed consisting of 50% existing site topsoil and 50% new topsoil equal or equivalent to ‘Native Low ‘P’ Mix’ as supplied by Australian Native Landscapes. Soil to conform to AS4419 refer to typical detail.

Pest and Disease Control

The Landscape Contractor shall spray for pests and disease infestations when the pest and fungal attack has been positively identified and when their populations have increased to a point that will become detrimental to plant growth. Apply all pesticides to manufacturer’s directions.

Frequency: weekly inspection

Fertilising

Generally check for signs of nutrient deficiencies (yellowing of leaves, failure to thrive), and adapt fertiliser regime to suit. Fertiliser should be applied at the beginning and the end of the (summer) growing season.

Irrigation

A sub surface dripper style, electrically automated self timed irrigation system is recommended to be supplied to all garden bed areas. Regular checks are to be made to ensure continued successful operation. The Landscape Contractor shall be responsible for coordination and engagement of a specialist irrigation designer and installation contractor to design, supply and install an automatic subterranean drip irrigation system to all raised planter beds.

The irrigation system will need to provide designated landscaped areas with enough water for vigorous healthy plant growth. As a general rule landscaped areas will need 20-25mm, species dependant, of water per week. The landscape Contractor will need to monitor natural rainfall using a rain switch in order to set irrigation flow rates accordingly on a monthly basis.

Standards

All grown or purchased plant stock must conform to all the conditions and requirements given in NATSPEC Guide: Specifying Trees. Soils to be in accordance with AS4419, mulching composts and conditioners to be in accordance with AS4454. Soils should conform to best practice specifications as listed in the Landscape Soils Handbook (Simon Leake & Elke Haege 2017).

Drawing Title:

Typical Specifications

DWG No:

SSD-05

GEOSCAPH

LANDSCAPE ARCHITECTS

Suite 215, 284 Victoria Ave, Chatswood NSW 2067 Ph. (02) 9411 1485  
www.geoscapes.com.au  
ABN 84 620 205 781 ACN 620 205 781

Architect:



Project Manager:



Client:



Scale:	Date:	Job Number:	North:	Revision					FOR SSD APPLICATION	
N/A	02.07.21	210222	N/A	Rev	Date	Description	Drawn	Checked		
				-	21.04.21	FOR SSD DRAFT	KC	BG		
				A	09.06.21	FOR SSD	KC	BG		
				B	22.06.21	FOR SSD	KC	BG		
Project:	Snack Brands Horizon			C	02.07.21	FOR SSD	KC	BG		
685-649 Mamre Road, Orchard Hills, NSW 2748										

Snack Brands Horizon  
685-649 Mamre Road, Orchard Hills, NSW 2748



PLANT SCHEDULE

Code	Botanical Name	Common Name	Mature Height	Native	Spacing	Pot Size	Qty*
Trees							
ACA IMP	Acacia implexa	Hickory Wattle	12m	✓	As Shown	100L	6
BAC MYR	Backhousia myrtifolia	Hickory Wattle	12m	✓	As Shown	100L	6
CAS GLA	Casuarina glauca	Swamp Oak	10m	✓	As Shown	100L	8
COR MAC	Corymbia maculata	Spotted Gum	45m	✓	As Shown	100L	8
ELA EUM	Elaeocarpus eumundii	Eumundii Quandong	10m	✓	As Shown	100L	3
EUC CRE	Eucalyptus crebra	Narrow-Leaved Ironbark	18m	✓	As Shown	100L	6
EUC EUG	Eucalyptus eugenioides	Thin-Leaved Stringybark	30m	✓	As Shown	100L	6
EUC FIB	Eucalyptus fibrosa	Red Ironbark	35m	✓	As Shown	100L	2
EUC MOL	Eucalyptus moluccana	Grey Box	20m	✓	As Shown	100L	9
EUC TER	Eucalyptus tereticornis	Forest Red Gum	30m	✓	As Shown	100L	3
CUP ANA	Cupaniopsis anacardioides	Tuckeroo	8-15m	✓	As Shown	100L	12
LAG NAT	Lagertstroemia indica x fauriei 'Natchez'	White Crepe Myrtle	5m		As Shown	100L	2
MEL BRA	Melaleuca bracteata	Black Teatree	8m	✓	As Shown	100L	7
PIT REV	Pittosporum revolutum	Rough Fruit Pittosporum	3m	✓	As Shown	100L	7
SYZ LEU	Syzygium leuhmannii	Lilly Pilly	6m	✓	As Shown	100L	6
TRI LAU	Tristaniopsis laurina	Water Gum	8m	✓	As Shown	100L	11
WAT FLO	Waterhousea floribunda	Weeping Lily Pilly	15m	✓	As Shown	100L	16
Shrubs							
ACM smi	Acmena smithii	Lilly Pilly	3-5m	✓	As Shown	200MM	154
BRE obl	Breynia oblongifolia	Common Breynia	3m	✓	As Shown	200MM	61
BUR spi	Bursaria spinosa	Boxthorn	4m	✓	As Shown	200MM	61
CAL vim	Callistemon viminalis 'Little John'	Little John Bottlebrush	0.8m	✓	As Shown	200MM	4
CAL sal	Callistemon salignus	Willow Bottlebrush	10m	✓	As Shown	200MM	61
CAL qua	Calothamnus quadrifidus	One-sided Botlebrush	1.5-2.5m	✓	As Shown	200MM	61
COR alb	Correa alba	Native Fuschia	1.5m	✓	As Shown	200MM	11
DAV uli	Daviesia ulicifolia	Gorse Bitter-Pea	2m	✓	As Shown	200MM	50
DIL jun	Dillwynia juniperina	Prickly Parrot Pea	2.5m	✓	As Shown	200MM	61
DOR exc	Doryanthes excelsa	Gymea Lily	3m	✓	As Shown	200MM	50
GRE ros	Grevillea rosmarinifolia 'Crimson Villea' [H16]	Crimson Villea Grevillea	0.8m	✓	As Shown	200MM	4
HAK ser	Hakea sericea	Hakea Sericea	5m	✓	As Shown	200MM	61
HYM fla	Hymenosporum flavum 'Lushious'	Native Frangipani	0.4-0.6m	✓	As Shown	200MM	4
LEP for	Leptospermum laevigatum 'Fore Shore'	Tea Tree	0.3-0.5m	✓	As Shown	200MM	4
PIM hum	Pimelea humilis	Dwarf Rice Flower	0.5m	✓	As Shown	200MM	10
WES fru	Westringia fruticosa 'Aussie Box' [WES08]	Native Rosemary	0.7-0.95m	✓	As Shown	200MM	4
SYZ aus	Syzygium australe 'Tiny Trev'	Lilly Pilly	0.7-1m	✓	As Shown	200MM	4
Groundcovers							
AJU rep	Ajuga reptans 'Burgundy Glow'	Bugle Herb	0.2m	✓	3/m2	Tubestock	154
BRU aus	Brunoniella australis	Blue Trumpet	0.2m	✓	3/m2	Tubestock	2721
DIC rep	Dichondra repens	Kidney Plant	0.1m	✓	3/m2	Tubestock	2721
GOO hed	Goodenia hederacea	Violet-Leaved Goodenia	0.3m	✓	3/m2	Tubestock	2817
HIB dif	Hibbertia diffusa	Wedge Guinea Flower	0.2m	✓	3/m2	Tubestock	2721
MYO par	Myoporum parvifolia 'Yareena' [PARV01]	Creeping Boobialla	0.1m	✓	3/m2	Tubestock	2847
VIO hed	Viola hederacea	Ivy-leaved Violet	0.3m	✓	3/m2	Tubestock	2989
Drainage Easement Planting							
CYM ref	Cymbopogon refractus	Barbed Wire Grass	1m	✓	6/m2	Tubestock	1903
ECH cae	Echinopogon caespitosus	Bushy Hedgehog-Grass	1.5m	✓	6/m2	Tubestock	1903
ERA bro	Eragrostis brownii	Common Lovegrass	3m	✓	6/m2	Tubestock	1903
MIC sti	Microlaena stipoides	Weeping Grass	0.7m	✓	6/m2	Tubestock	1903
THE aus	Themeda australis	Kangaroo Grass	0.8m	✓	6/m2	Tubestock	1903
* Final numbers to be confirmed at GC satge							

PLANT IMAGES



Lagertstroemia indica x fauriei 'Natchez'



Backhousia myrtifolia



Eucalyptus crebra



Eucalyptus moluccana



Syzygium leuhmannii



Acacia implexa



Correa alba



Doryanthes excelsa



Callistemon salignus



Hakea sericea



Dichondra repens



Brunoniella australis



Goodenia hedeacea



Myoporum parvifolia 'Yareena' [PARV01]



Viola hederacea



Themeda australis



Eragrostis brownii



Microlaena stipoides

Drawing Title:

Planting Schedule & Imagery

DWG No:

SSD-06

GEOSCAPHES

LANDSCAPE ARCHITECTS

Suite 215, 284 Victoria Ave, Chatswood NSW 2067 Ph. (02) 9411 1485  
www.geoscapes.com.au  
ABN 84 620 205 781 ACN 620 205 781

Architect:



Project Manager:



Client:



Scale:	Date:	Job Number:	North:	Revision					FOR SSD APPLICATION	
				Rev	Date	Description	Drawn	Checked		
N/A	02.07.21	210222	N/A	-	21.04.21	FOR SSD DRAFT	KC	BG		
Project:	Snack Brands Horizon 685-649 Mamre Road, Orchard Hills, NSW 2748			A	09.06.21	FOR SSD	KC	BG		
				B	22.06.21	FOR SSD	KC	BG		
				C	02.07.21	FOR SSD	KC	BG		

Snack Brands Horizon

685-649 Mamre Road, Orchard Hills, NSW 2748