

ARCADIA

Northside West Clinic Stage 2
Sitewide Landscape Strategy

Prepared for SSDA
Jan. 2022

We respectfully acknowledge the Traditional Custodians of the lands where we live and work. We acknowledge their unique ability to care for Country and deep spiritual connection to it. We honour Elders past, present and emerging whose knowledge and wisdom has and will ensure the continuation of cultures and traditional practices.

Rev A	24/11/2021	VD/AL
Rev B	10/12/2021	VD/AL
Rev C	16/12/2021	VD/AL
Rev D	22/12/2021	VD/AL
Rev E	10/01/2022	VD/AL

Executive Summary

The project aims to provide a landscape strategy for Northside West Mental Health facility stage 2 expansion. The landscape strategy developed the internal and external courtyards of with views over Lytton Park and Finlayson's Creek. Both courtyards will have a positive effect on patient experience and recovery times. The strategy will include hanging garden, green walls, external planting and climbers to soften interface with ground and meandering landscape routes.

Contents

SECTION 01 Context	04
Regionla Context	05
Site Context	06
Ecology Communities	07
History	08
SECTION 02 Visions	09
Principles	10
Charater and Materiality	11
Softworks	12
SECTION 03 STRATEGIES	13
Scope of Works	14
Existing Trees	15
Analysis	16
Ground Level Masterplan	17
Ground Level Details Plan	18
Ground Level Section	19
Ground Level Planting Palette	20
Level 1 Hanging Garden Masterplan	21
Level 1 Hanging Garden Section	22
Level 1 Hanging Garden Planting Palette	23
Level 1 Inner Courtyard	24

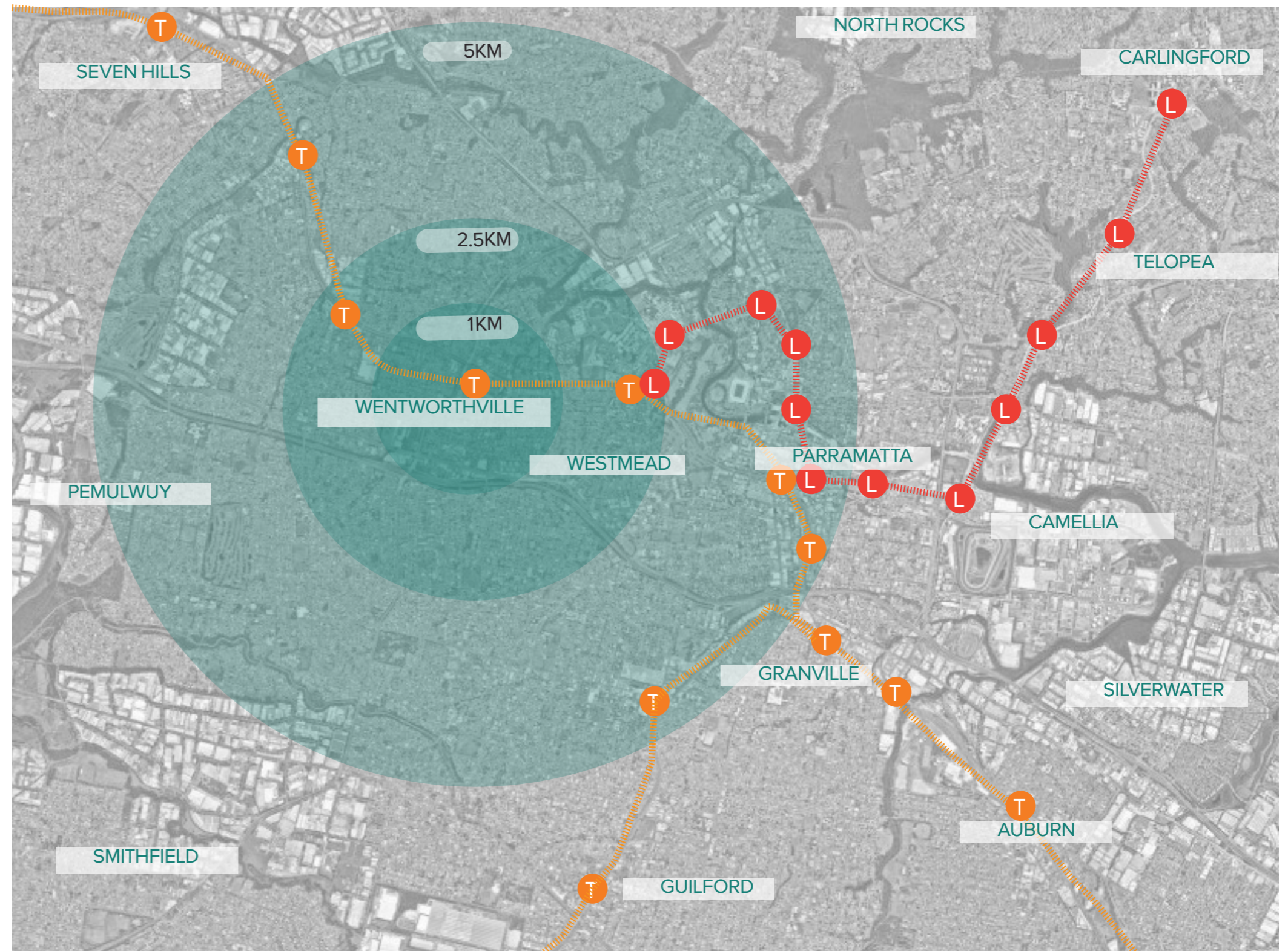
01 Context



01 Context | Regional Context








Wentworthville

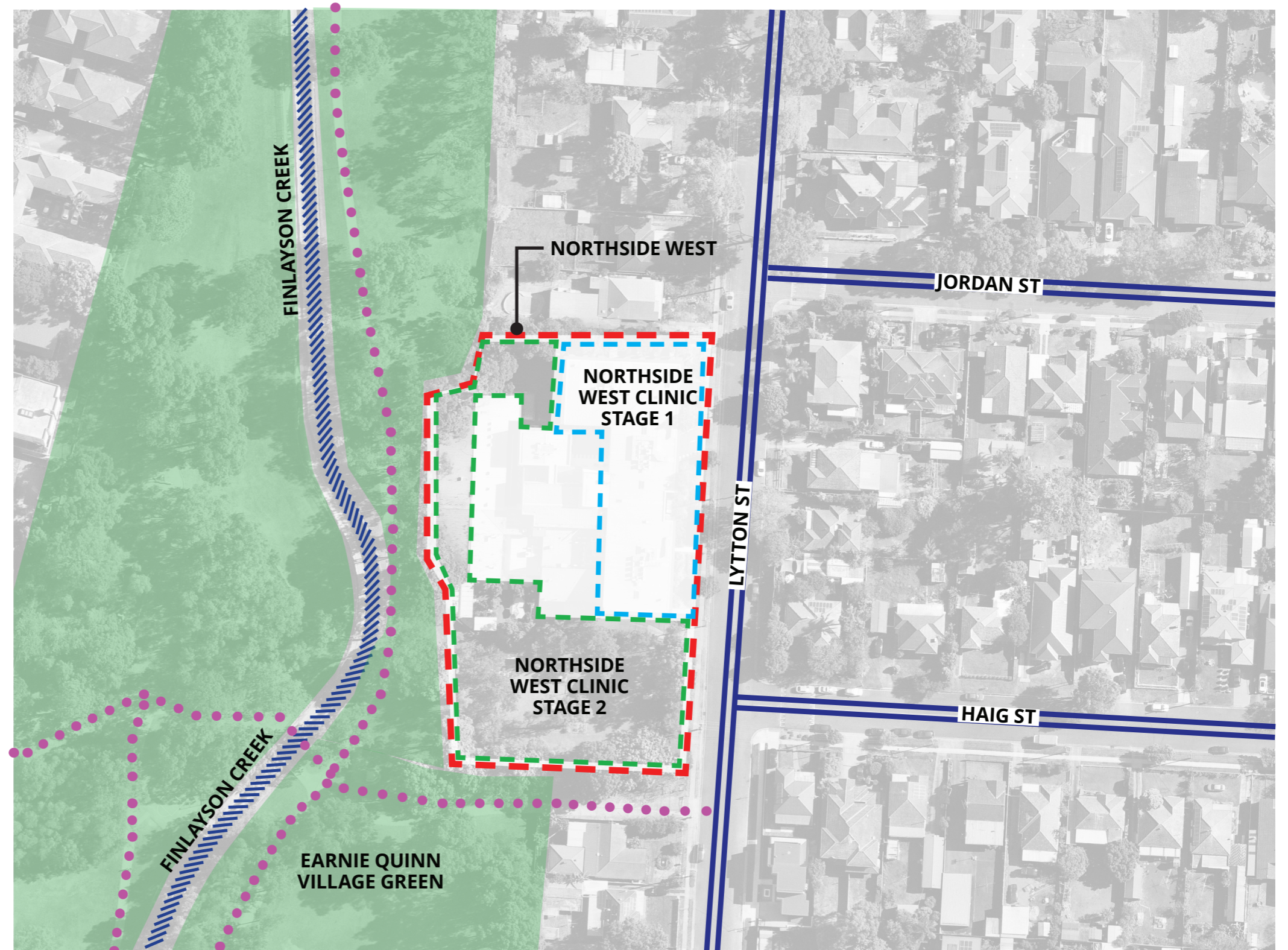
Wentworthville is located twenty seven kilometers west of the Sydney central business district and is part of the Greater Western Sydney Region. Wentworthville is part of both the local government areas of the City of Parramatta and the Cumberland Council. The estimated population in 2018 was 8084. The area has progressed from one of Australia's first Government and industrial zone, to a medical, research and manufacturing precinct. The community has a local manufacturing and industrial heritage with the factories being present such as Bonds and Shannon's Brick and Pottery factory. Today the community is a culturally diverse and highly educated area with 61% being born overseas of which 47% have a university or trade qualification.



01 Context | Site Context

Legend

-  NORTHSIDE WEST SITE BOUNDARY
-  PROJECT STAGE 1 EXTEND OF WORKS
-  PROJECT STAGE 2 EXTEND OF WORKS
-  MAIN ROAD
-  CYCLING AND PATHWAY
-  WATERWAY
-  PARKLAND AND RESERVES



01 Context | Ecological Communities

Cumberland Plain Woodland

Shale/ Sandstone Transition Forest

- Endemic to New South Wales, specifically the area in and around Western Sydney.
- It occurs on flat to undulating terrain at an elevation of 350m above sea level.
- The natural vegetation that occurs along the creeks and reserves within the area is a blend of Cumberland River Flat Forest with She oaks (*Casuarina glauca*) Roughed-barked Apple (*Angophora floribunda*) and Forest Red Gum (*Eucalyptus tereticornis*).
- This is a threatened ecological community with less than 10% remaining.



01 Context | History

Colonial Settlement

Wentworthville is named after D'Arcy Wentworth, a colonial surgeon and landowner. From 1799 he slowly acquired land to form a large estate called Fitzwilliam Place which was primarily used for grazing livestock. Portions of the estate were leased for cattleyards and The Star Inn. Subdivisions of the land become Wentworthville estate with a small population by 1890, leading to the opening of a postoffice and public school. In the 1920s industrial development occurred in the area with the opening of the Bonds factory. This economic growth led to other services and entertainment buildings opening such as an open air cinema and the Regent Theatre on Station Street.



Indigenous Heritage

The First Nations People for more than 40,000 years have been using the large rock shelves of the Toongabbie Creek for resources. The traditional custodians of the land are the Boolbainora clan of the Darug people. On 3 May 1805, a group of Aboriginal women and a young free settler, John Kennedy, arranged a reconciliation meeting on Prospect Hill. This involved Darug Aboriginal leaders and European settlers headed by Rev John Marsden. It was the first recorded act of reconciliation between Aboriginal people and Europeans in Australia and it ended the ongoing conflict in Parramatta and Prospect.



12,000 BP	1788	1790s	1821	1843	1890	1920s	1934	2021
Sydney Canyon is flooded, forming Sydney Harbour. Indigenous people migrate following glacial melt.	European Arrival. The Boolbainora clan of the Darug Nation occupy the Cumberland.	Conflict between settlers and First Nations people occurs at Prospect Hill.	Wentworth occupies land named Fitzwilliam Place used for grazing livestock.	The Star Inn opens and becomes a hub of social activity as its a convenient rest point for local graziers.	Wentworthville as a township is established and a post office and public school opens.	Industrial and service development occurs, with the Bonds factory, a blacksmith, groceries, butcher and an open air cinema.	A new theatre is built called the Regent Theatre, situated on Station Street.	Today Wentworthville is a multicultural, diverse, well educated young community with 67% speaking languages other than English.

02 Visions



02 Visions | Principles



02 Visions | Character & Materiality

External Courtyard



Internal Courtyard



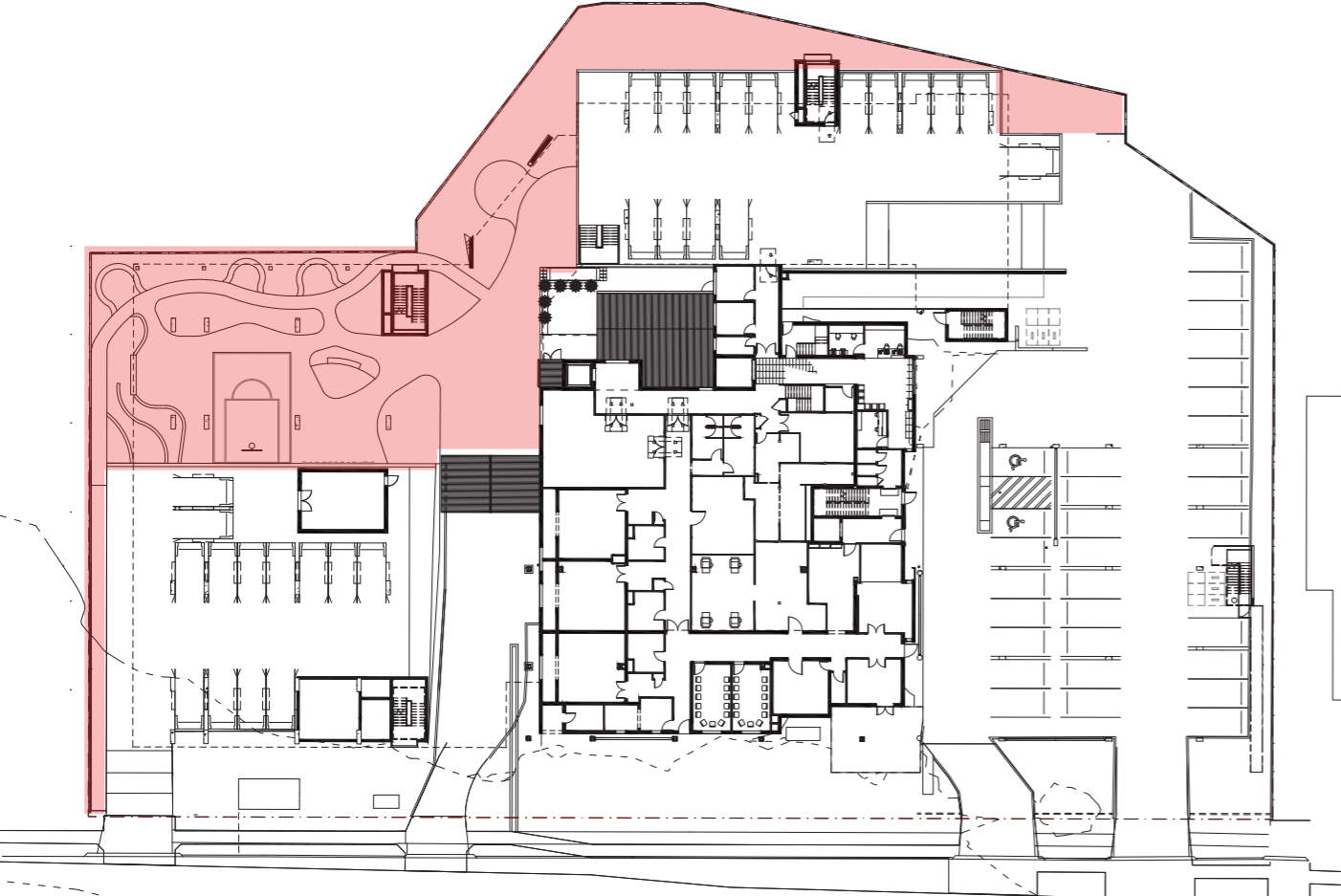
02 Visions | Softworks



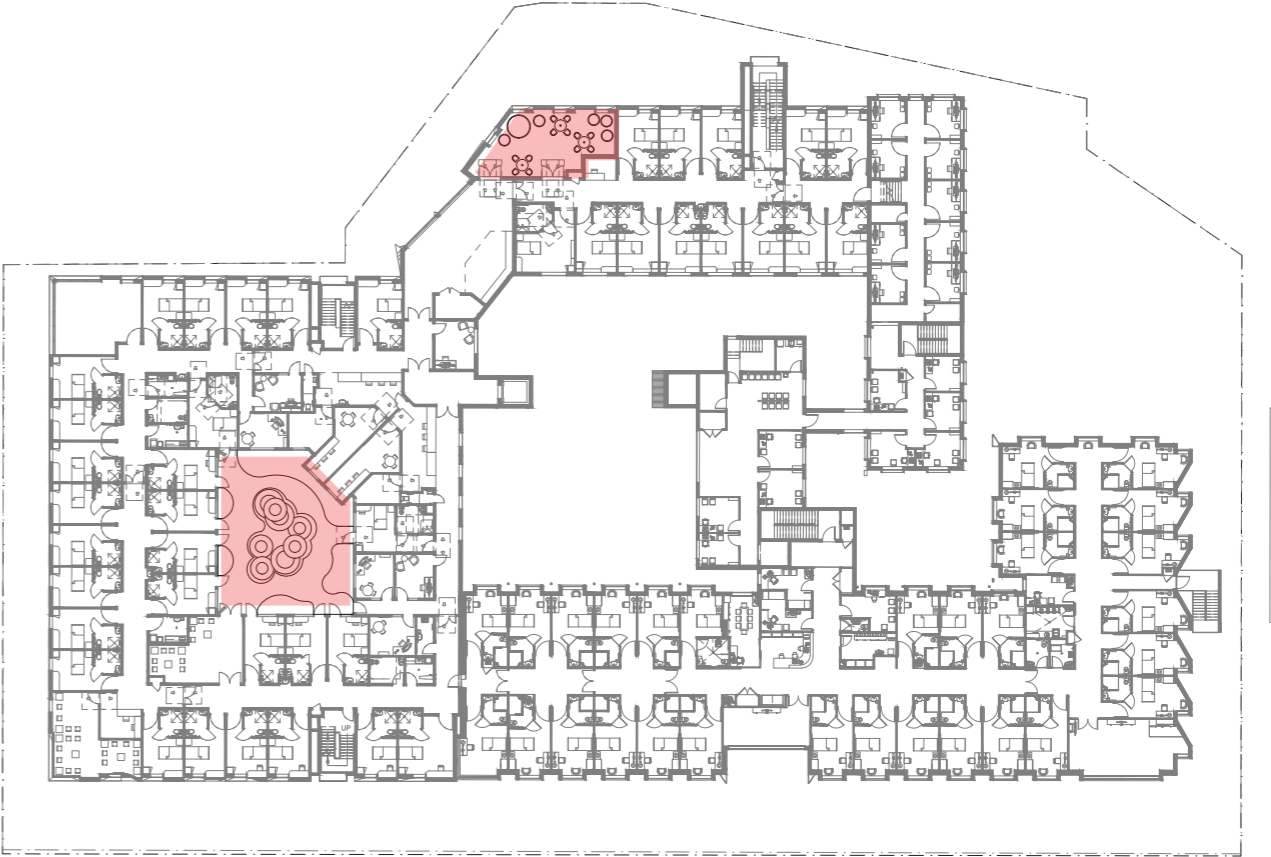
03 Strategies



03 Strategy | Scope of Works



Ground Level
External Courtyard

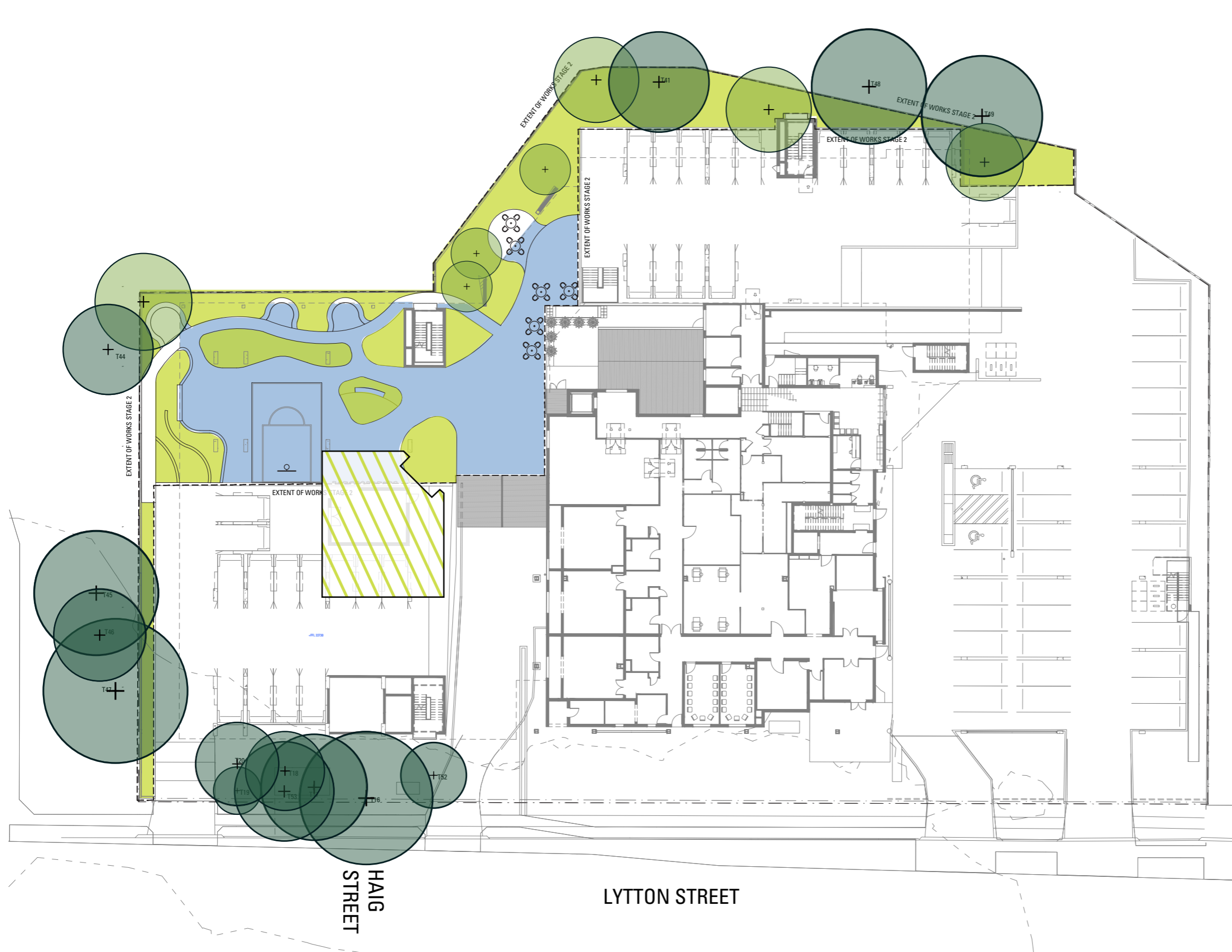


Level 1
Hanging Garden
+
Inner Courtyard

03 Strategy | Trees Strategy



03 Strategy | Urban Heat Island Effect Mitigation



Legend

- PROPOSED TREES CANOPY
- EXISTING TREES CANOPY
- GREEN SPACE
- SHADED HARDSCAPE
- ROOFTOP GARDEN

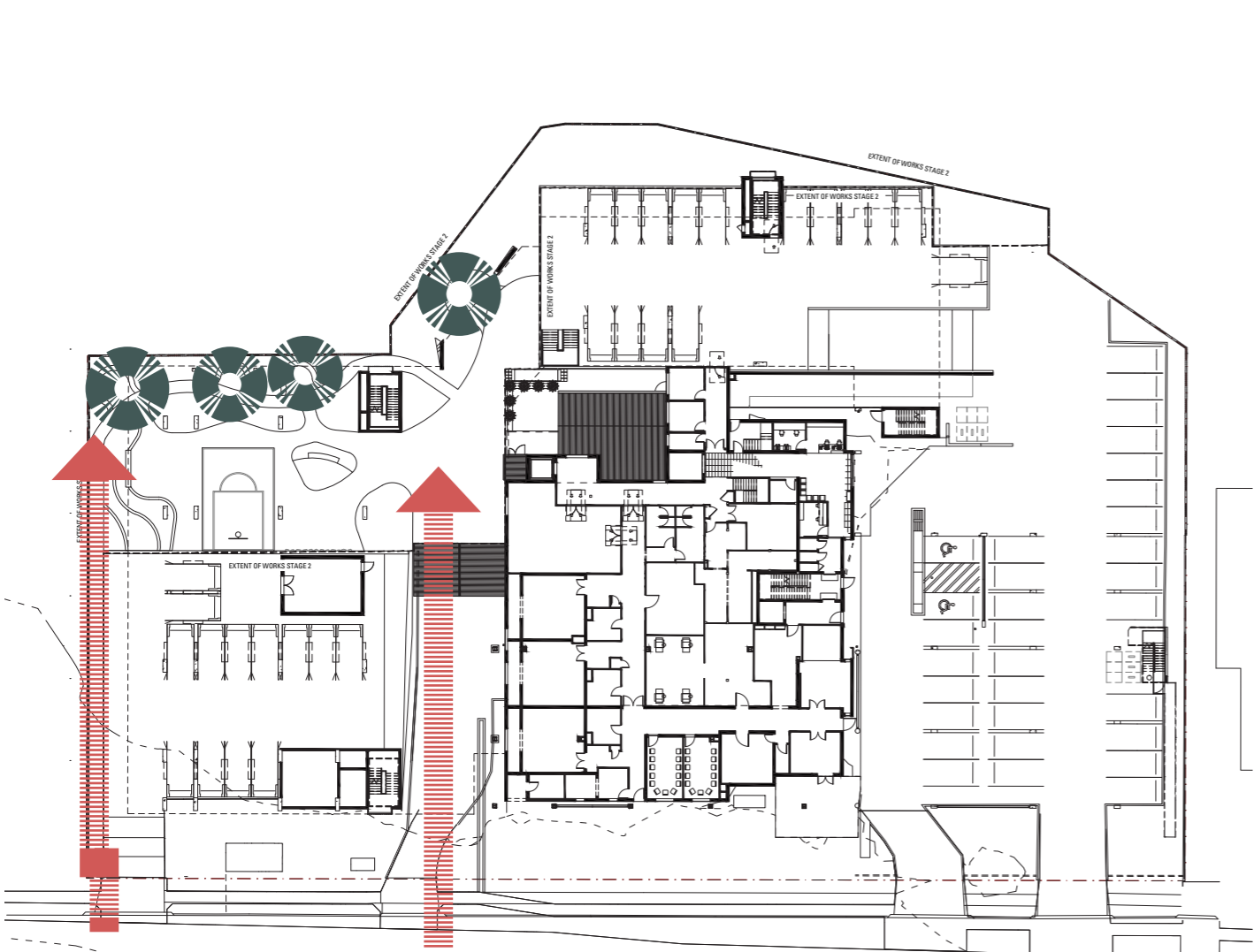
SURFACE AREA/TYPE	AREA (%)
Tree Canopy	40%
Green Space	30%
Shaded Hardworks	15%
Unshaded Hardworks	5%
Rooftop Garden	10%

The Landscape strategy aims to provide shade and cooling urban area through the planting design to mitigate the urban heat island effect.

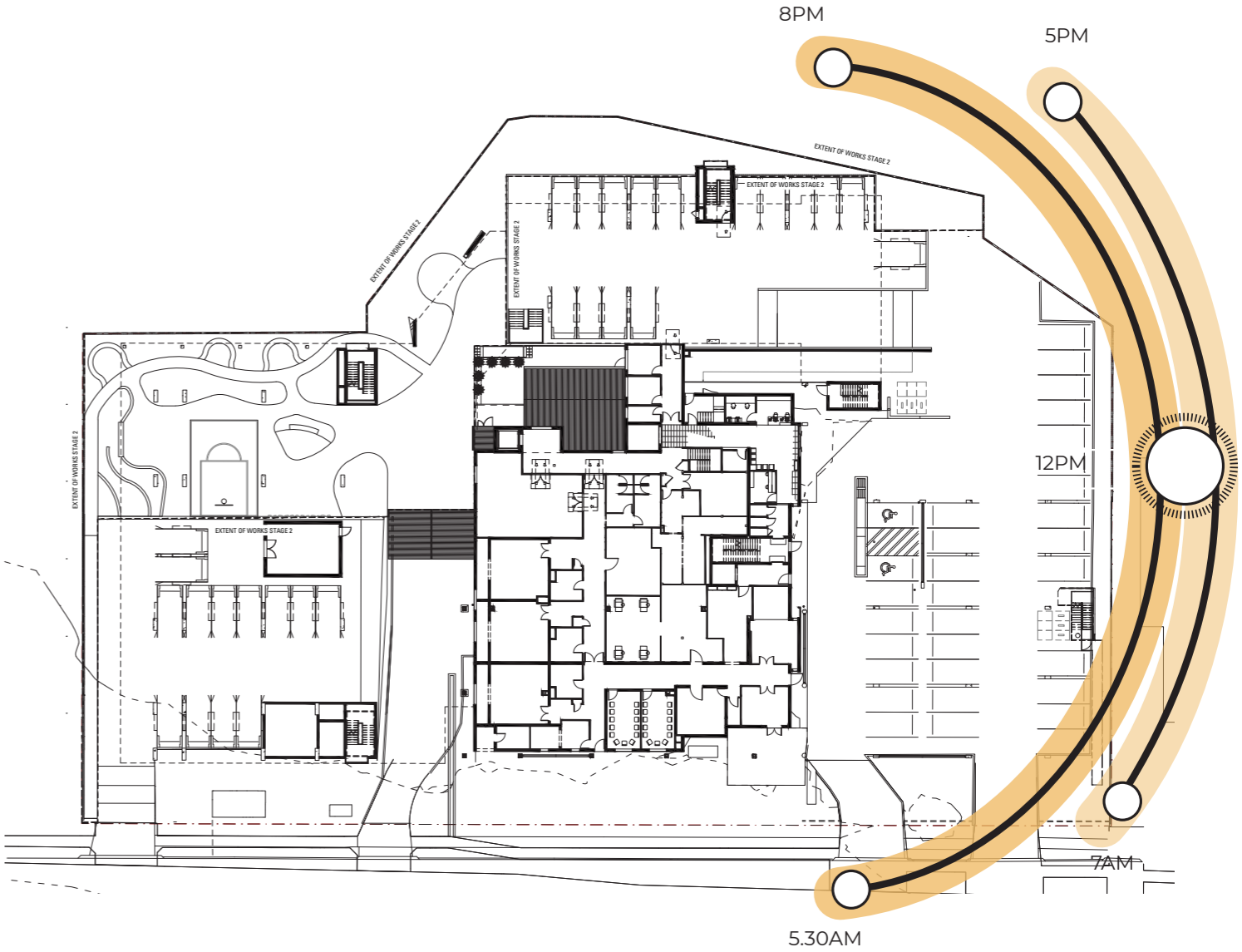
- The strategy will provide min. 40% canopy included retained existing significant trees canopy across the ground level landscape area to mitigate the urban heat island effect based on NSW Western Sydney 5MT program.

- The strategy will provide approx. 70% green space included the tree canopy to provide the urban cooling.

03 Strategy | Analysis



Access and Staying Ports



Sun Path

03 Strategy | Ground Level Masterplan

Legend

- 01 UNDER COVER CAR PARKING BY ARCHITECTS
- 02 PATHWAY
- 03 EXTERNAL COURTYARD
- 04 BACK BUFFER PLANTING



LYTTON STREET

03 Strategy | Ground Level Details Plan



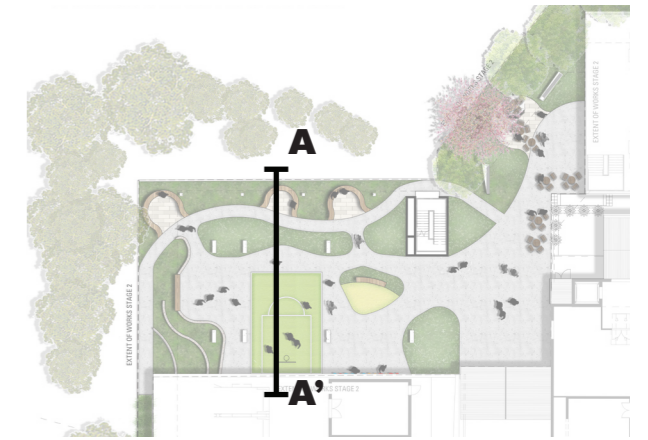
Legend

- 01 RAMP ACCESS TO EXTERNAL COURTYARD
- 02 RETAINING WALLS
- 03 POCKET GARDEN
- 04 TIMBER SEATING
- 05 BASKETBALL HALF COURT
- 06 TURF
- 07 BACKYARD WITH FEATURE PLANTING
- 08 LOADING PORT
- 09 CLIMBING WALL
- 10 PLANTING BED
- 11 WALKING PATH



03 Strategy | Ground Level Section

- 01 POCKET GARDEN
- 02 PLANTING BED
- 03 BASKETBALL COURT
- 04 TIMBER BATTEN SCREEN
- 05 CAR PARKING BY ARCHITECTS



SECTION AA'

03 Strategy | Ground Level Planting Palette



Trees

Corymbia citriodora



Magnolia grandiflora 'little gem'



Grass & Rushes

Liriope muscari 'Evergreen Giant'



Lomandra hystrix



Liriope muscari



Shrub

Dianella tasred



Leionema 'Green Screen'



Phormium 'Wildwood'



Metrosideros 'Tahiti'



Fern & Cycads

Asplenium nidus



Cyathea cooperi



Davallia pyxidata

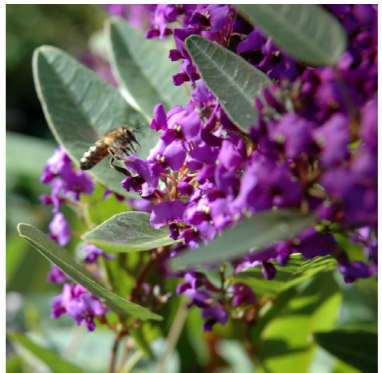


Nephrolepis cordifolia



Groundcovers & Climbers

Hardenbergia violacea



Hardenbergia 'Purple Spray'



Viola hederacea

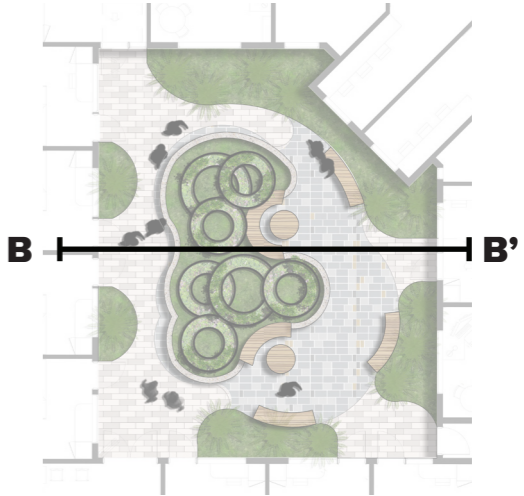
03 Strategy | Level 1 Hanging Garden Masterplan



Legend

- 01 SEATING AREA PAVING
- 02 ACCESS PATH PAVING
- 03 PLANTING BED
- 04 HANGING GARDEN
- 05 TIMBER SEAT
- 06 SEAT WITH TABLE

03 Strategy | Level 1 Hanging Garden Section



- 01 HANGING GARDEN
- 02 PLANTING BED
- 03 SEAT WITH TABLE

SECTION BB'

03 Strategy | Level 1 Hanging Garden Planting Palette



Dicksonia antarctica



Asplenium nidus



Cyathea cooperi



Blechnum "Silver Lady"



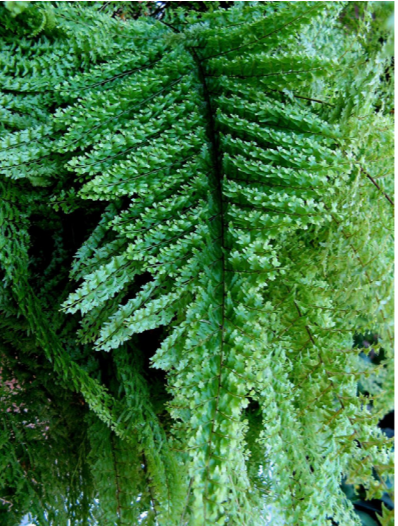
Zamia furfuracea



Cissus antarctica



Pandorea pandorana



Nephrolepis 'Fluffy Ruffles'



Begonia summerwings 'Vanilla'



Epipremnum aureum



microsorium diversifolium

03 Strategy | Level 1 Inner Courtyard

Legend

- ① POT PLANTINGS
- ② CAFE TABLE AND SEATS



Aspidistra Elatior



Adiantum spp.



Dieffenbachia spp.



Epipremnum Pinnatum



ARCADIA