

884-928 Mamre Road, Kemps Creek, NSW 2178

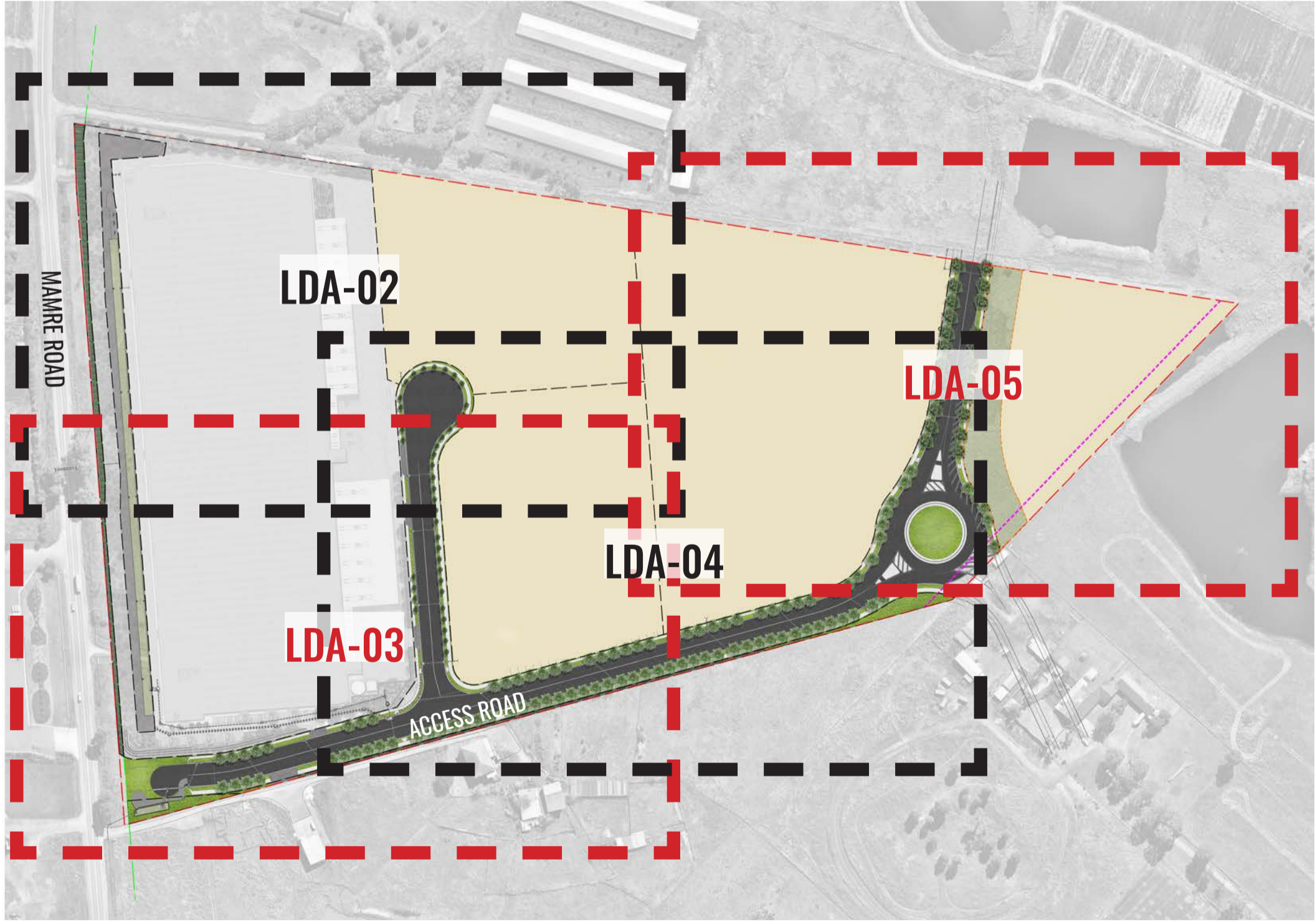
Landscape Documentation for Industrial Estate Subdivision - Modification 3 to SSD-17647189



IMAGE TAKEN FROM NEARMAP 2021

Drawing Register

Dwg No.	Drawing Name
LDA-00	Landscape Cover Sheet
LDA-01	Landscape Masterplan
LDA-02	Landscape Detail Plan - Sheet 1
LDA-03	Landscape Detail Plan - Sheet 2
LDA-04	Landscape Detail Plan - Sheet 3
LDA-05	Landscape Detail Plan - Sheet 4
LDA-06	Landscape Section AA & BB
LDA-07	Landscape Sections CC & DD
LDA-08	Landscape Typical Details
LDA-09	Landscape Specification
LDA-10	Indicative Planting Schedule & Imagery



KEY PLAN - SHEET LAYOUTS

NTS



SITE PLAN

Drawing Title:
Landscape Cover Sheet
DWG No:

LDA-00

GEOSCAPES
LANDSCAPE ARCHITECTS
Suite 303, 8 Help St, Chatswood NSW 2067 Ph. (02) 9411 1485
www.geoscapes.com.au
ABN 84 620 205 781 ACN 620 205 781

Architect:
nettleontribe

Client:
BARINGS

Scale:	Date:	Job Number:	North:	Revision		FOR MOD 3		
N.A.	17.11.25	200827		Rev	Date	Description	Drawn	Checked
Project:				U	30.10.23	FOR SSD	KC	BG
				V	01.10.24	FOR MOD 1	KC	BG
				W	11.12.24	FOR MOD 2	KC	BG
				X	17.11.25	FOR MOD 3	KC	BG

NOT FOR CONSTRUCTION

884-928 Mamre Road
Kemps Creek, NSW



NOT FOR CONSTRUCTION

Drawing Title:
Landscape Masterplan
 DWG No:

LDA-01

GEOSCAPES
 LANDSCAPE ARCHITECTS
 Suite 303, 8 Help St, Chatswood NSW 2067 Ph. (02) 9411 1485
 www.geoscapes.com.au
 ABN 84 620 205 781 ACN 620 205 781

Architect:

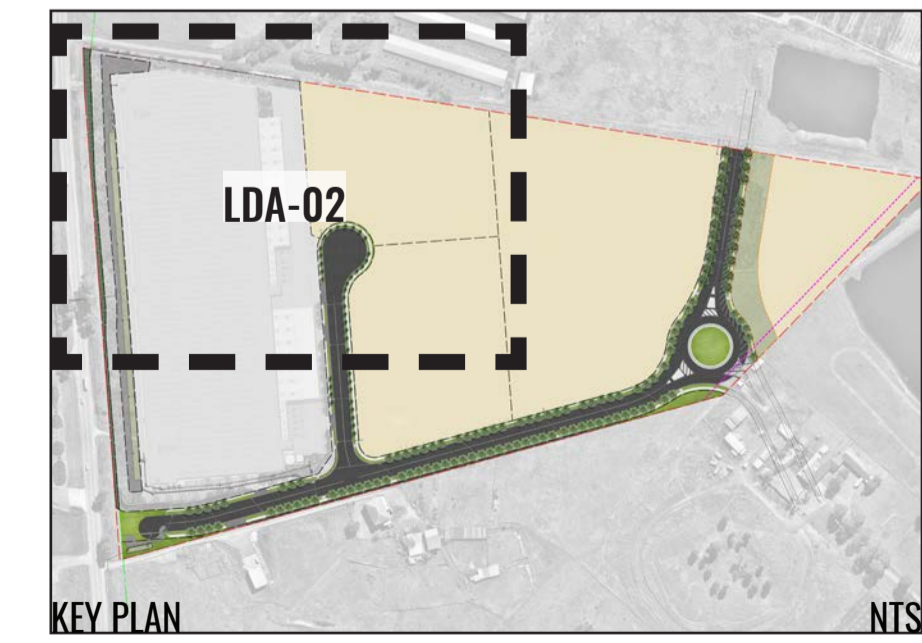
Client:

Scale: 1:1000 @ A1 1:2000 @ A3	Date: 17.11.25	Job Number: 200827	North: 	Revision		FOR MOD 3		
Project: 884-928 Mamre Road Kemps Creek, NSW				Rev	Date	Description	Drawn	Checked
				U	30.10.23	FOR SSD	KC	BG
				V	01.10.24	FOR MOD 1	KC	BG
				W	11.12.24	FOR MOD 2	KC	BG
				X	17.11.25	FOR MOD 3	KC	BG



LEGEND

- CADASTRAL BOUNDARY
- LOT BOUNDARIES
- - - - PROPOSED FREIGHT CORRIDOR
- PROPOSED STREET TREES
- PROPOSED GROUNDCOVER PLANTING
- PROPOSED FOOTPATH (VARIABLE WIDTHS)
- PROPOSED ROAD
- PROPOSED LOT SUBDIVISION
- BIO-RETENTION AREA
- IMPERMEABLE LINER TO ENGINEERS DETAILS
- BP BASIN PLANTING REFER TO LDA-10
- - - - TNSW ROAD WIDENING BOUNDARY
- JUTE MESH TO 1:2 BATTER
- - - - TRUNK DRAINAGE CHANNEL. REFER TO LTD-01 TO LTD-05 FOR DETAILS
- - - - STORMWATER DRAINAGE PIPES AND PITS. REFER TO CIVIL DETAILS
- TURF TO RESIDUAL LOTS



Drawing Title:
Landscape Detail Plan - Sheet 1
 DWG No:

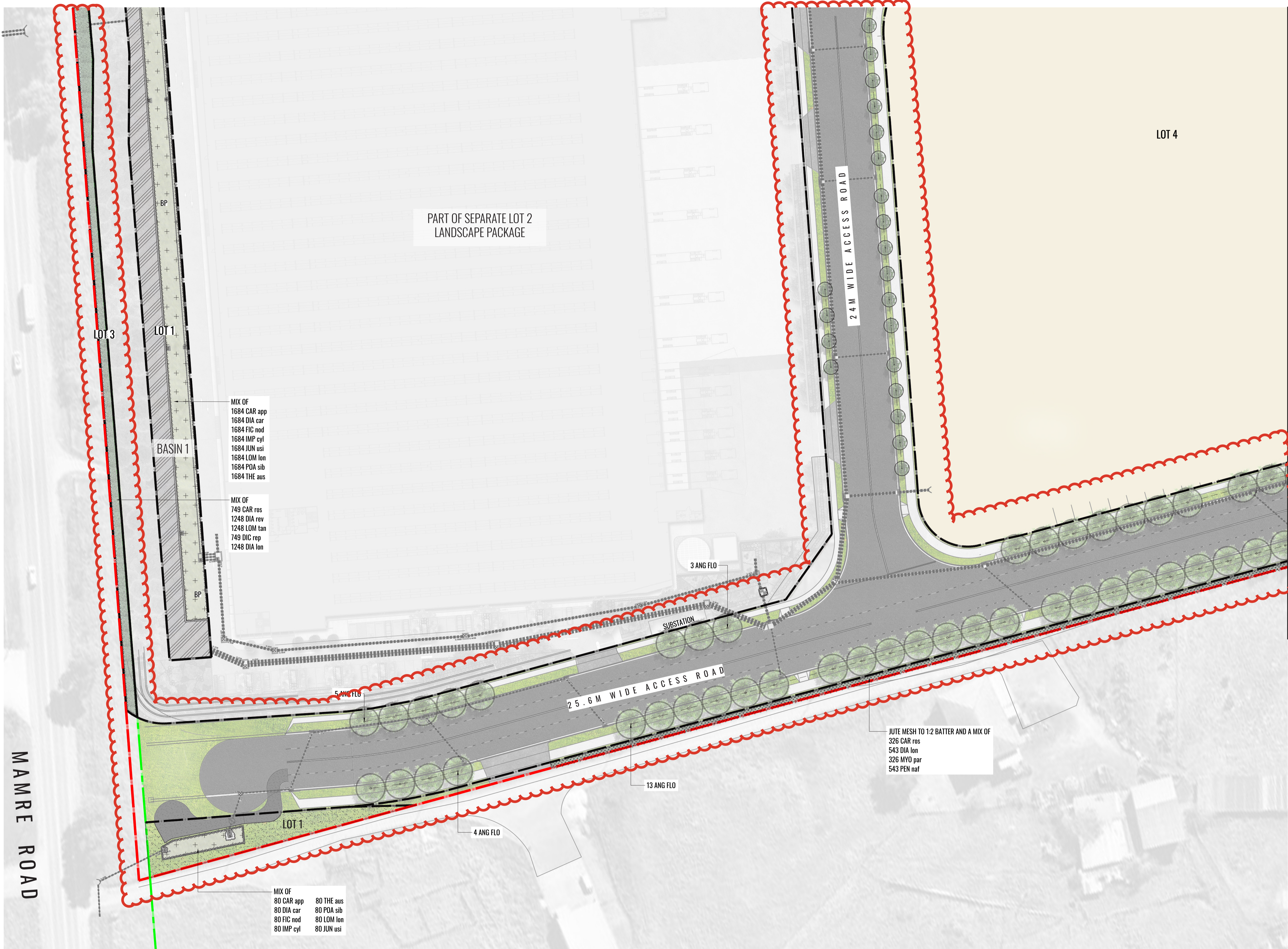
LDA-02

GEOSCAPES
 LANDSCAPE ARCHITECTS
 Suite 303, 8 Help St, Chatswood NSW 2067 Ph. (02) 9411 1485
 www.geoscapes.com.au
 ABN 84 620 205 781 ACN 620 205 781

Architect:

Client:

Scale: 1:500 @ A1 1:1000 @ A3	Date: 17.11.25	Job Number: 200827	North: 	Revision	FOR MOD 3			
Project: 884-928 Mamre Road Kemps Creek, NSW				Rev	Date	Description	Drawn	Checked
				U	30.10.23	FOR SSD	KC	BG
				V	01.10.24	FOR MOD 1	KC	BG
				W	11.12.24	FOR MOD 2	KC	BG
				X	17.11.25	FOR MOD 3	KC	BG



LEGEND

- CADASTRAL BOUNDARY
- LOT BOUNDARIES
- PROPOSED FREIGHT CORRIDOR
- PROPOSED STREET TREES
- PROPOSED GROUNDCOVER PLANTING
- PROPOSED FOOTPATH (VARIABLE WIDTHS)
- PROPOSED ROAD
- PROPOSED LOT SUBDIVISION
- BIO-RETENTION AREA
- IMPERMEABLE LINER TO ENGINEERS DETAILS
- BP BASIN PLANTING REFER TO LDA-10
- TNSW ROAD WIDENING BOUNDARY
- JUTE MESH TO 1:2 BATTER
- TRUNK DRAINAGE CHANNEL. REFER TO LTD-01 TO LTD-05 FOR DETAILS
- STORMWATER DRAINAGE PIPES AND PITS. REFER TO CIVIL DETAILS
- TURF TO RESIDUAL LOTS



Drawing Title:
Landscape Detail Plan - Sheet 2
 DWG No:
LDA-03

GEOSCAPES
 LANDSCAPE ARCHITECTS
 Suite 303, 8 Help St, Chatswood NSW 2067 Ph. (02) 9411 1485
 www.geoscapes.com.au
 ABN 84 620 205 781 ACN 620 205 781

Architect:

Client:

Scale:
 1:500 @ A1
 1:1000 @ A3

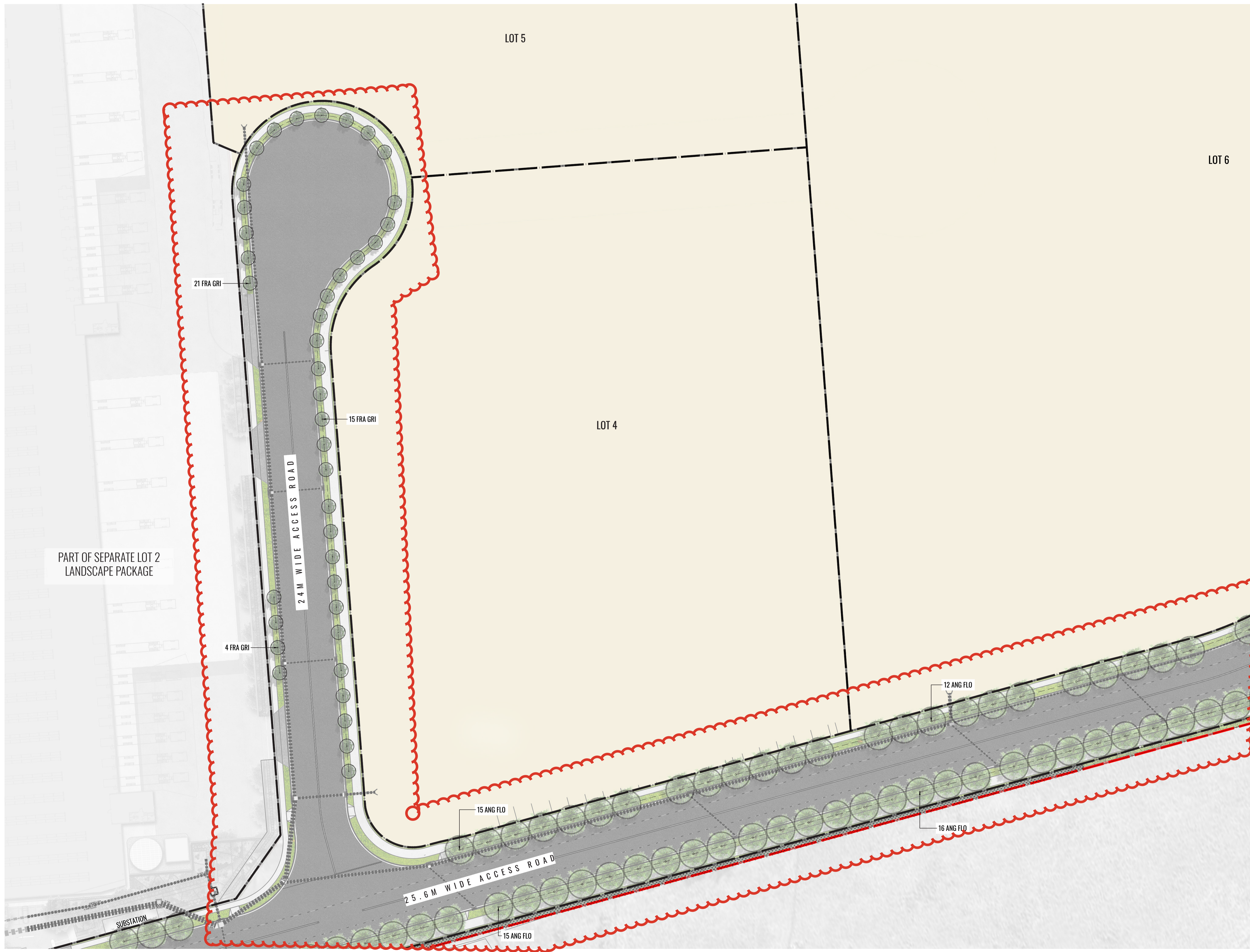
Date:
 17.11.25

Job Number:
 200827

North:

Project:
 884-928 Mamre Road
 Kemps Creek, NSW

Revision				FOR MOD 3	
Rev	Date	Description	Drawn	Checked	
U	30.10.23	FOR SSD	KC	BG	
V	01.10.24	FOR MOD 1	KC	BG	
W	11.12.24	FOR MOD 2	KC	BG	
X	17.11.25	FOR MOD 3	KC	BG	



PART OF SEPARATE LOT 2
LANDSCAPE PACKAGE

LEGEND

- CADASTRAL BOUNDARY
- LOT BOUNDARIES
- PROPOSED FREIGHT CORRIDOR
- PROPOSED STREET TREES
- PROPOSED GROUNDCOVER PLANTING
- PROPOSED FOOTPATH (VARIABLE WIDTHS)
- PROPOSED ROAD
- PROPOSED LOT SUBDIVISION
- BIO-RETENTION AREA
- IMPERMEABLE LINER TO ENGINEERS DETAILS
- BP BASIN PLANTING REFER TO LDA-10
- TNSW ROAD WIDENING BOUNDARY
- JUTE MESH TO 1:2 BATTER
- TRUNK DRAINAGE CHANNEL. REFER TO LTD-01 TO LTD-05 FOR DETAILS
- STORMWATER DRAINAGE PIPES AND PITS. REFER TO CIVIL DETAILS
- TURF TO RESIDUAL LOTS



Drawing Title:
Landscape Detail Plan - Sheet 3
DWG No:

LDA-04

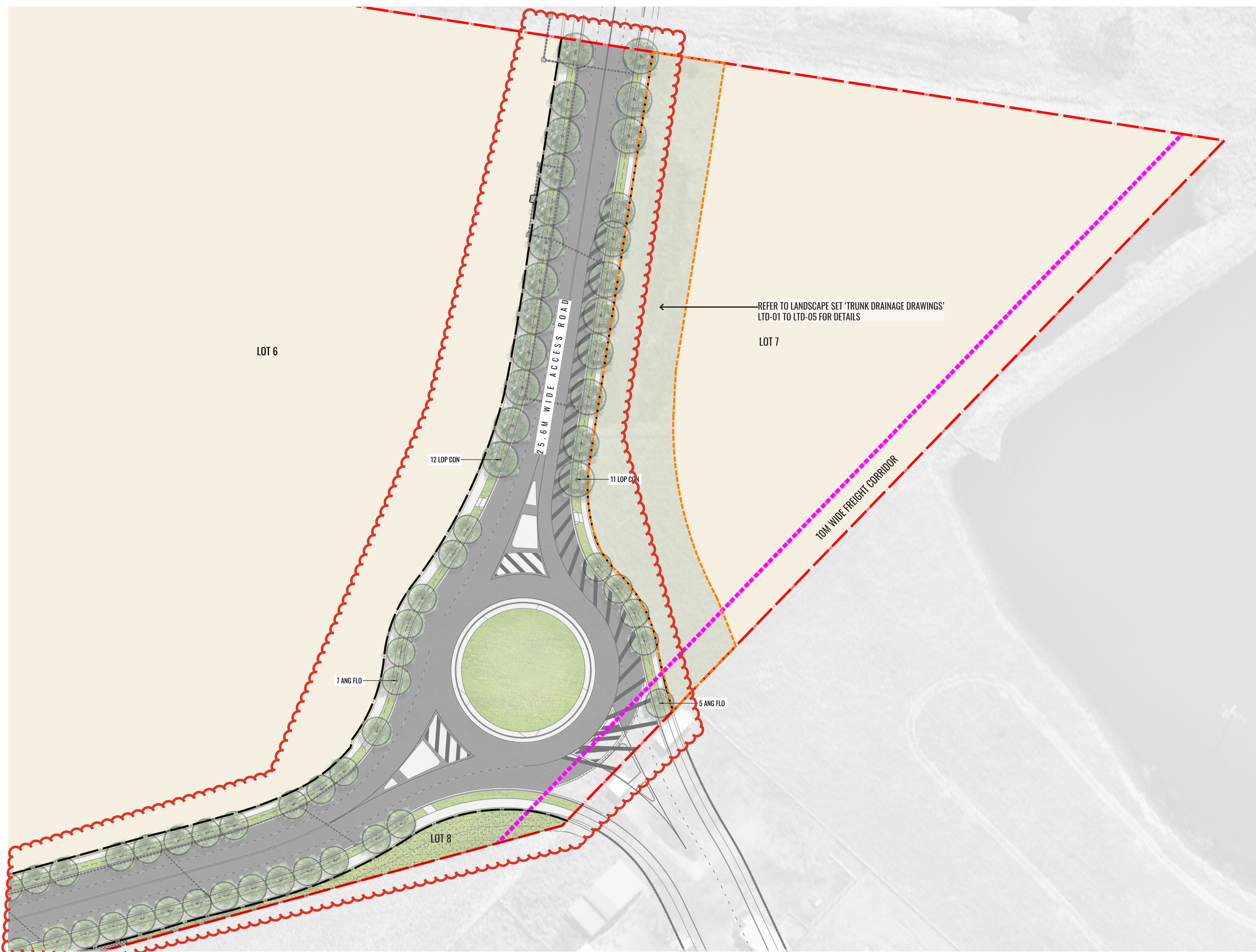
GEOSCAPES
LANDSCAPE ARCHITECTS
Suite 303, 8 Help St, Chatswood NSW 2067 Ph. (02) 9411 1485
www.geoscapes.com.au
ABN 84 620 205 781 ACN 620 205 781

Architect:

Client:
BARINGS

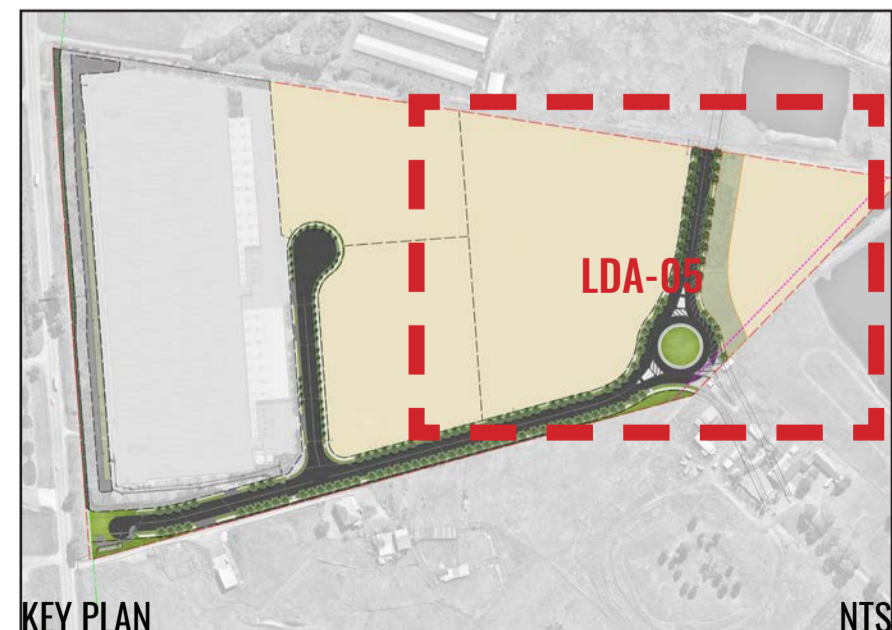
Scale: 1:500 @ A1
1:1000 @ A3
Date: 17.11.25
Job Number: 200827
North:
Project: 884-928 Mamre Road
Kemps Creek, NSW

Revision				FOR MOD 3	
Rev	Date	Description	Drawn	Checked	
U	30.10.23	FOR SSD	KC	BG	
V	01.10.24	FOR MOD 1	KC	BG	
W	11.12.24	FOR MOD 2	KC	BG	
X	17.11.25	FOR MOD 3	KC	BG	



LEGEND

- CADASTRAL BOUNDARY
- LOT BOUNDARIES
- PROPOSED FREIGHT CORRIDOR
- PROPOSED STREET TREES
- PROPOSED GROUNDCOVER PLANTING
- PROPOSED FOOTPATH (VARIABLE WIDTHS)
- PROPOSED ROAD
- PROPOSED LOT SUBDIVISION
- BIO-RETENTION AREA
- IMPERMEABLE LINER TO ENGINEERS DETAILS
- BASIN PLANTING REFER TO LDA-10
- TNSW ROAD WIDENING BOUNDARY
- JUTE MESH TO 1:2 BATTER
- TRUNK DRAINAGE CHANNEL. REFER TO LTD-01 TO LTD-05 FOR DETAILS
- STORMWATER DRAINAGE PIPES AND PITS. REFER TO CIVIL DETAILS
- TURF TO RESIDUAL LOTS



KEY PLAN NOT FOR CONSTRUCTION NIS

Drawing Title:
Landscape Detail Plan - Sheet 4
 DWG No:
LDA-05

GEOSCAPES
 LANDSCAPE ARCHITECTS
 Suite 303, 8 Help St, Chatswood NSW 2067 Ph. (02) 9411 1485
 www.geoscapes.com.au
 ABN 84 620 205 781 ACN 620 205 781

Architect:

Client:

Scale:
 1:500 @ A1
 1:1000 @ A3

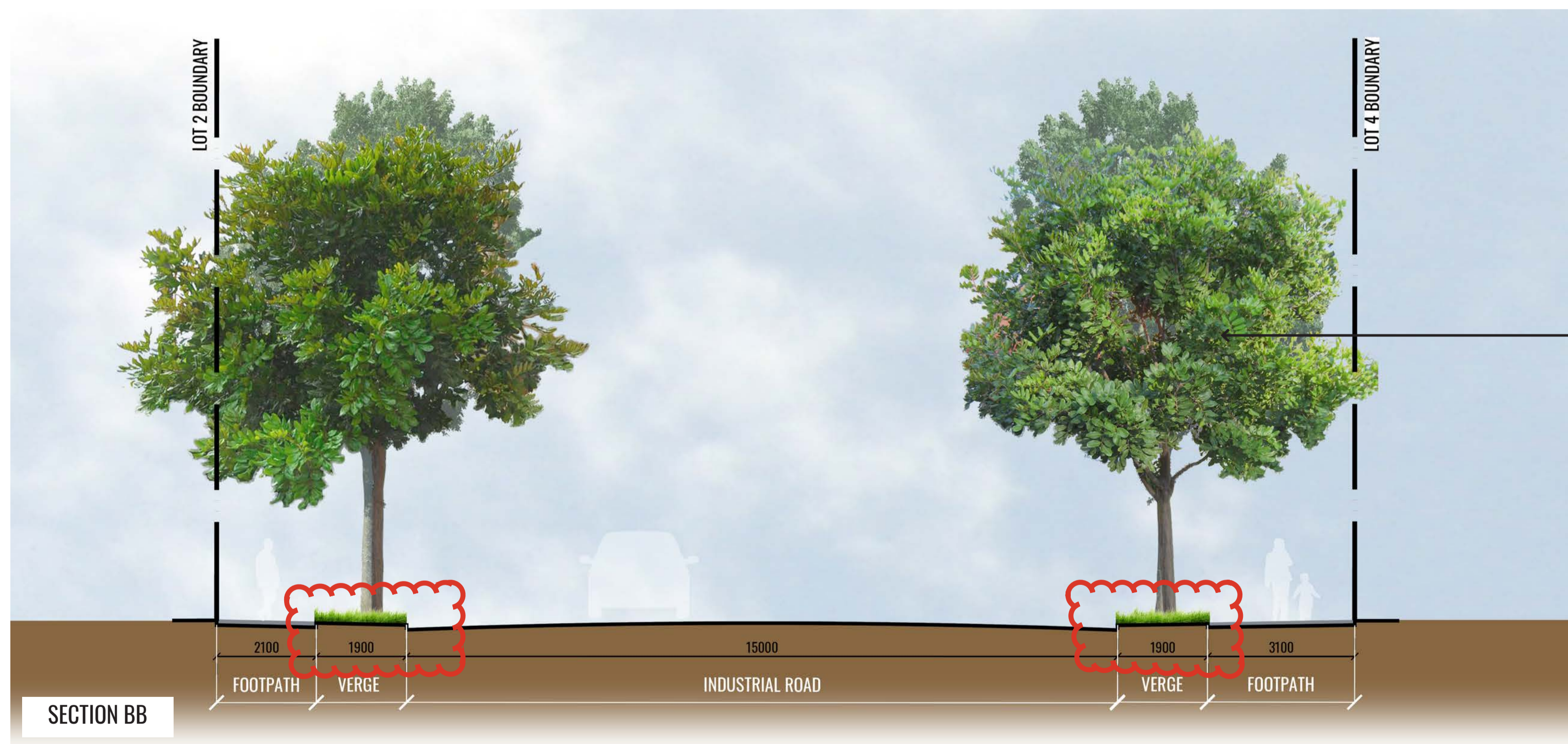
Date:
 17.11.25

Job Number:
 200827

North:

Project:
 884-928 Mamre Road
 Kempers Creek, NSW

Revision					FOR MOD 3	
Rev	Date	Description	Drawn	Checked		
U	30.10.23	FOR SSD	KC	BG		
V	01.10.24	FOR MOD 1	KC	BG		
W	11.12.24	FOR MOD 2	KC	BG		
X	17.11.25	FOR MOD 3	KC	BG		



Drawing Title:
Landscape Sections AA & BB
 DWG No:

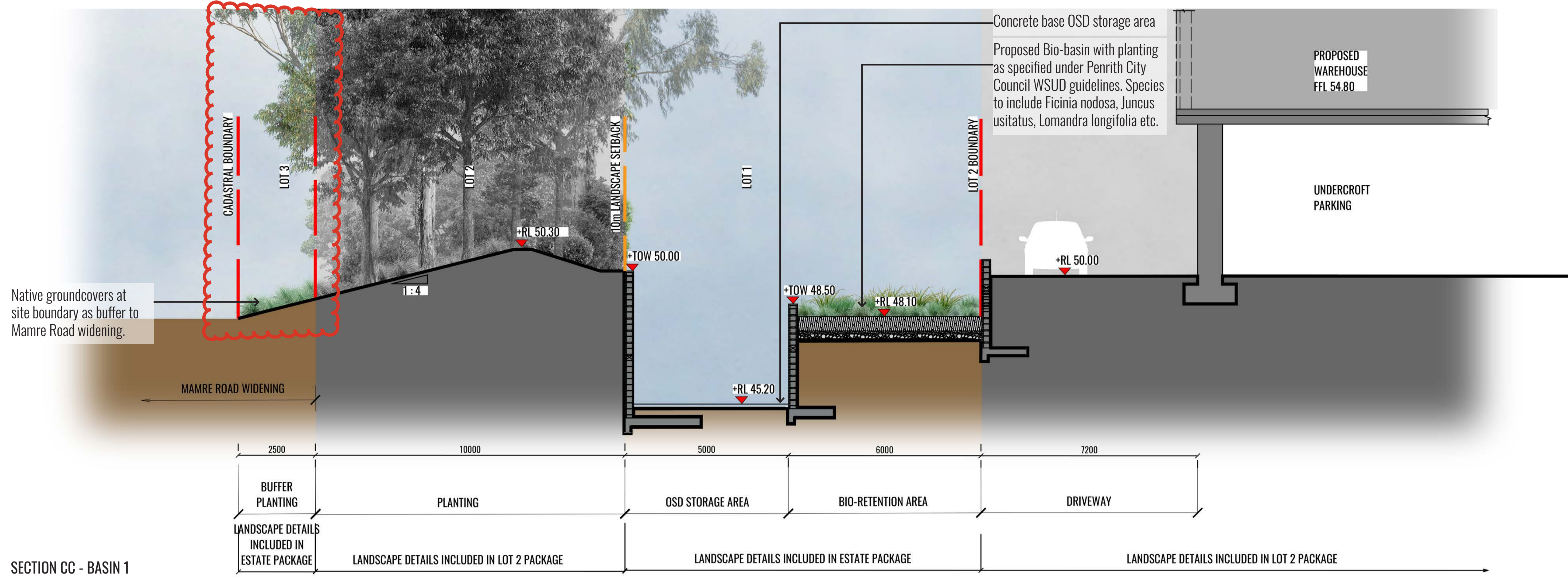
LDA-06

GEOSCAPES
 LANDSCAPE ARCHITECTS
 Suite 303, 8 Help St, Chatswood NSW 2067 Ph. (02) 9411 1485
 www.geoscapes.com.au
 ABN 84 620 205 781 ACN 620 205 781

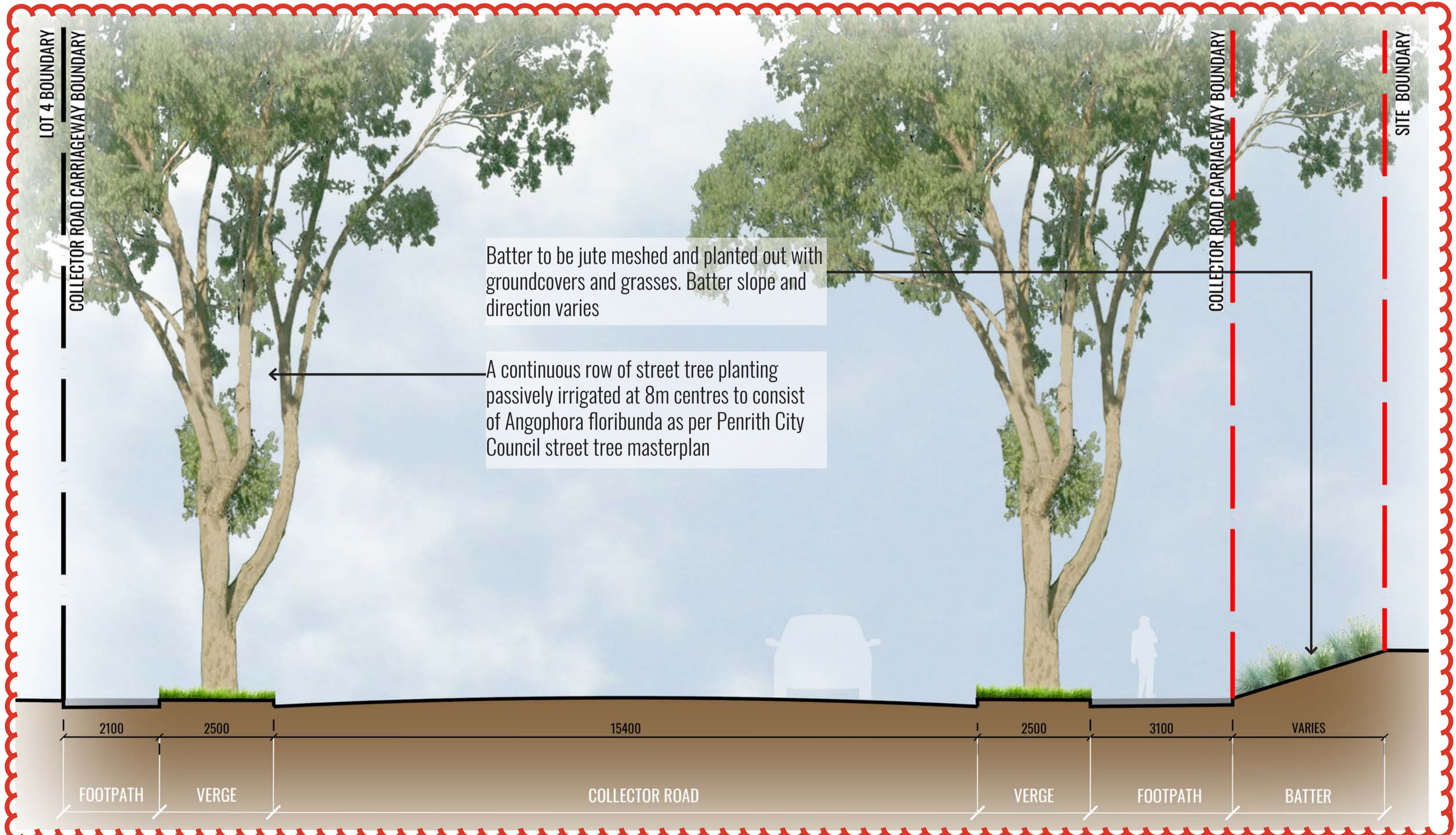
Architect:

Client:

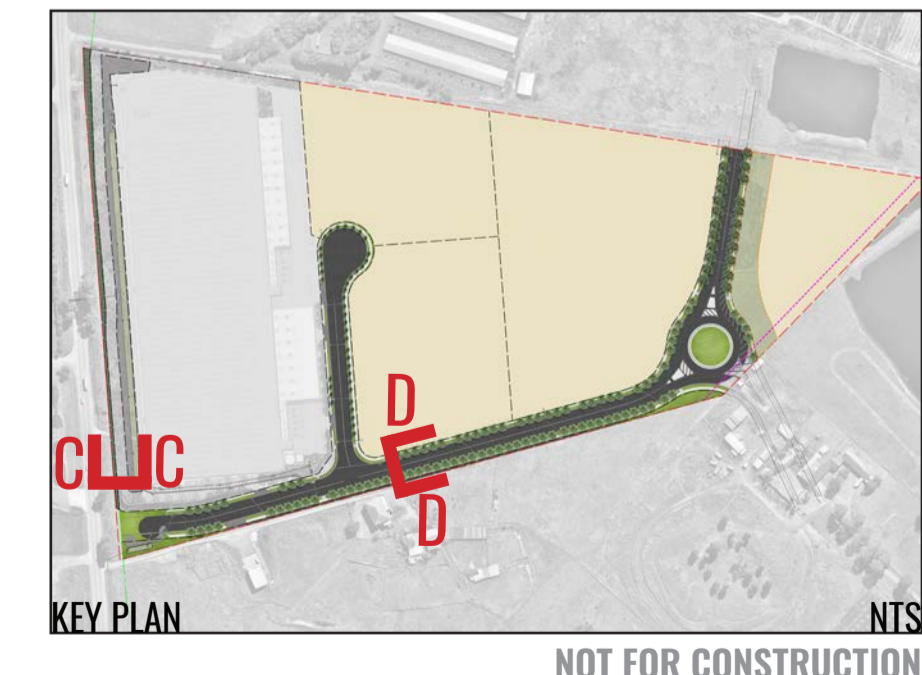
Scale: 1:75 @ A1 1:150 @ A3	Date: 17.11.25	Job Number: 200827	North: N.A.	Revision	FOR MOD 3			
Project:	884-928 Mamre Road Kemps Creek, NSW			Rev	Date	Description	Drawn	Checked
				U	30.10.23	FOR SSD	KC	BG
				V	01.10.24	FOR MOD 1	KC	BG
				W	11.12.24	FOR MOD 2	KC	BG
				X	17.11.25	FOR MOD 3	KC	BG



SECTION CC - BASIN 1



SECTION DD - COLLECTOR ROAD



Drawing Title:
Landscape Sections CC & DD
 DWG No:

LDA-07

GEOSCAPES
 LANDSCAPE ARCHITECTS
 Suite 303, 8 Help St, Chatswood NSW 2067 Ph. (02) 9411 1485
 www.geoscapes.com.au
 ABN 84 620 205 781 ACN 620 205 781

Architect:

Client:

Scale: 1:75 @ A1 1:150 @ A3	Date: 17.11.25	Job Number: 200827	North: N.A.	Revision	FOR MOD 3			
Project: 884-928 Mamre Road Kemps Creek, NSW				Rev	Date	Description	Drawn	Checked
				U	30.10.23	FOR SSD	KC	BG
				V	01.10.24	FOR MOD 1	KC	BG
				W	11.12.24	FOR MOD 2	KC	BG
				X	17.11.25	FOR MOD 3	KC	BG

MAINTENANCE PLAN

Maintenance shall mean the care and maintenance of the landscape works by accepted horticultural practice as rectifying any defects that become apparent in the landscape works under normal use. The landscape contractor shall attend the site on a **weekly basis** to maintain the landscape works commencing from practical completion.

Rubbish Removal

The Landscape Contractor shall undertake rubbish removal from the site on a **weekly basis** to ensure the site remains in tidy condition.

Weed Eradication

Weed growth that may occur in grassed, planted or mulched areas is to be removed using environmentally acceptable methods i.e. non-residual glyphosate herbicide (e.g. 'Roundup', applied in accordance with the manufacturer's direction.

Tree Replacement

Trees shall show signs of healthy vigorous growth and be free from disease and not exhibit signs of stress prior to handover to the client. Any trees or plant that die or fail to thrive, or are damaged or stolen will be replaced. Replacement material shall have the initial maintenance period extended in accordance with the landscape contract conditions. Trees and plant materials shall be equal to the minimum requirements of species specified and approved material delivered to site. Should the condition decline from the approved sample the Superintendent reserves the right to reject the tree / plants.
Frequency: as required.

Stakes

Adjust and/or replace stakes and ties where required. Remove staking and guying when instructed by the Superintendent

Pruning

Selective pruning may be required during the establishment period to promote a balanced canopy structure. These activities shall be carried out to the best horticultural and industry practice. All pruned material is to be removed from site.

Mulched Surfaces

All planter beds and garden areas shall have a minimum depth of 75mm organic mulch. All mulch is to be free of deleterious matter such as soil, weeds, sticks and should conform to AS 4454.

Mulched surfaces are to be kept clean and tidy and free of any deleterious material and foreign matter. Reinstate depths to a uniform level of 75mm with mulch as specified, mulch to be free of any wood material impregnated with CCA or similar toxic treatment. Top up mulch levels prior to handover to client & estate management.

Watering

Implement an appropriate hand watering regime in areas not irrigated in association with current watering programme to maintain plant health and vigour. The program shall reflect seasonal conditions and plant species.

Frequency: Weekly or as required.

Soil In Natural Ground

Non-Australian native garden beds to have soil installed consisting of 50% existing site topsoil and 50% new topsoil equal or equivalent to 'Organic Garden Mix' as supplied by Australian Native Landscapes. Australian native garden beds to have soil installed consisting of 50% existing site topsoil and 50% new topsoil equal or equivalent to 'Native Low 'P' Mix' as supplied by Australian Native Landscapes. Soil to conform to AS4419 refer to typical detail.

Pest and Disease Control

The Landscape Contractor shall spray for pests and disease infestations when the pest and fungal attack has been positively identified and when their populations have increased to a point that will become detrimental to plant growth. Apply all pesticides to manufacturer's directions.

Frequency: weekly inspection

Fertilising

Generally check for signs of nutrient deficiencies (yellowing of leaves, failure to thrive), and adapt fertiliser regime to suit. Fertiliser should be applied at the beginning and the end of the (summer) growing season.

Irrigation

A sub surface dripper style, electrically automated self timed irrigation system is recommended to be supplied to all garden bed areas. Regular checks are to be made to ensure continued successful operation. The Landscape Contractor shall be responsible for coordination and engagement of a specialist irrigation designer and installation contractor to design, supply and install an automatic subterranean drip irrigation system to all raised planter beds.

The irrigation system will need to provide designated landscaped areas with enough water for vigorous healthy plant growth. As a general rule landscaped areas will need 20-25mm, species dependant, of water per week. The landscape Contractor will need to monitor natural rainfall using a rain switch in order to set irrigation flow rates accordingly on a monthly basis.

Standards

All grown or purchased plant stock must conform to all the conditions and requirements given in NATSPEC Guide: Specifying Trees. Soils to be in accordance with AS4419, mulching composts and conditioners to be in accordance with AS4454. Soils should conform to best practice specifications as listed in the Landscape Soils Handbook (Simon Leake & Elke Haegge 2017).

NOT FOR CONSTRUCTION

Drawing Title:
Landscape Specification
DWG No:

LDA-09

GEOSCAPES
LANDSCAPE ARCHITECTS
Suite 303, 8 Help St, Chatswood NSW 2067 Ph. (02) 9411 1485
www.geoscapes.com.au
ABN 84 620 205 781 ACN 620 205 781

Architect:



Client:

BARINGS

Scale:	Date:	Job Number:	North:	Revision		FOR MOD 3		
As Shown @ A1	17.11.25	200827	N.A.	Rev	Date	Description	Drawn	Checked
Project:	U	30.10.23	FOR SSD	KC	BG			
	V	01.10.24	FOR MOD 1	KC	BG			
	W	11.12.24	FOR MOD 2	KC	BG			
	X	17.11.25	FOR MOD 3	KC	BG			

884-928 Mamre Road
Kemps Creek, NSW

PLANTING SCHEDULE

Code	Botanical Name	Common Name	Mature Height	Spacing	Pot Size	Quantity*
Trees						
ANG FLO	<i>Angophora floribunda</i>	Rough-Barked Apple	10-25m	8m	100L	95
FRA GRI	<i>Fraxinus Griffithii</i>	Griffith's Ash	6-8m	7m	100L	40
LOP CON	<i>Lophostemon confertus</i>	Queensland Brush Box	10-15m	10m	100L	23
Grasses + Groundcover						
CAR ros	<i>Carpobrotus glaucescens</i>	Native Pigface	0.3m	3/m2	140mm	1075
DIA lon	<i>Dianella longifolia</i>	Blue Flax Lily	0.5m	5/m2	Tubestock	1791
DIA rev	<i>Dianella revoluta</i>	Flax Lily	0.5m	5/m2	Tubestock	1248
DIC rep	<i>Dichondra repens</i>	Kidney Plant	0.1m	3/m2	140mm	749
LOM tan	<i>Lomandra longifolia</i> 'Tanika'	Mat Rush	0.6m	5/m2	Tubestock	1248
MYO par	<i>Myoporum parvifolium</i> 'Yareena'	Creeping Boobialla	0.2m	3/m2	140mm	326
PEN naf	<i>Pennisetum alopecuroides</i> 'Nafray'	Nafray	0.7m	5/m2	Tubestock	543
Bio-Retention & OSD Basin Planting						
CAR app	<i>Carex appressa</i>	Tussock Sedge	1.0m	8m2	Tubestock	1764
DIA car	<i>Dianella caerulea</i>	Blue Flax Lily	0.7m	8m2	Tubestock	1764
FIC nod	<i>Ficinia nodosa</i>	Knobby Club-Rush	1.2m	8m2	Tubestock	1764
IMP cyl	<i>Imperata cylindrica</i>	Blady Grass	1.0m	8m2	Tubestock	1764
JUN usi	<i>Juncus usitatus</i>	Common Rush	1.2m	8m2	Tubestock	1764
LOM lon	<i>Lomandra longifolia</i>	Mat Rush	1.0m	8m2	Tubestock	1764
POA sib	<i>Poa sieberiana</i>	Grey Tussock Grass	0.8m	8m2	Tubestock	1764
THE aus	<i>Themeda australis</i>	Kangaroo Grass	1.5m	8m2	Tubestock	1764

*Plant numbers to be finalised at Detailed Design / CC-Tender stage

PLANT IMAGES



A. Angophora floribunda B. Dianella longifolia C. Dianella revoluta D. Dichondra repens E. Myoporum parvifolium 'Yareena' F. Pennisetum alopecuroides 'Nafray' G. Carex appressa H. Carpobrotus glaucescens I. Fraxinus griffithii J. Lomandra longifolia 'Tanika' K. Dianella caerulea L. Lophostemon confertus M. Imperata cylindrica N. Ficinia nodosa O. Juncus usitatus P. Themeda australis

NOT FOR CONSTRUCTION

Drawing Title:
Indicative Planting Schedule & Imagery
 DWG No: **LDA-10**

GEOSCAPES
 LANDSCAPE ARCHITECTS
 Suite 303, 8 Help St, Chatswood NSW 2067 Ph. (02) 9411 1485
 www.geoscapes.com.au
 ABN 84 620 205 781 ACN 620 205 781

Architect:

Client:
BARINGS

Scale:	Date:	Job Number:	North:	Revision		FOR MOD 3		
N.A.	17.11.25	200827	N.A.	Rev	Date	Description	Drawn	Checked
				U	30.10.23	FOR SSD	KC	BG
				V	01.10.24	FOR MOD 1	KC	BG
				W	11.12.24	FOR MOD 2	KC	BG
				X	17.11.25	FOR MOD 3	KC	BG

Project: 884-928 Mamre Road
 Kemps Creek, NSW